



LINCOLN COUNTY SCHOOL DISTRICT

Dr. Majalise Tolan
Superintendent

District Office | Teaching & Learning Center
1212 NE Fogarty Street, Newport, OR 97365
PO Box 1110, Newport, OR 97365
T 541-265-9211 | F 541-265-3059
www.lincoln.k12.or.us

Board of Directors NOTICE OF A BOARD MEETING Board Work Session

Date	Wednesday, November 12, 2025
Time	5:00 PM
Place	Crestview Heights Elementary, 2750 S Crestline Dr, Waldport, OR 97394

The Lincoln County School District Board of Directors has scheduled a Board Work Session of the Board beginning at 5:00 PM.

Public comment will only be heard if a specific public comment time is designated on the agenda. Not all meetings of the Board have public comment.

If you are a member of the community and wish to speak before the Board, please email the following information to eddie.symington@lincoln.k12.or.us by **12:00 pm on the business day prior to the meeting: Name, address and phone number (optional), and topic.** Once your request is received, you will be contacted with details regarding making the comment during the meeting. Public comment cards will also be available at the door and must be completed and given to the Board Secretary. All public comment will follow Board Policy BDDH – “Public Comment at Board Meetings.”

The session will be streamed and can be accessed by visiting our [website](#).

The agenda is attached.

The meeting location is accessible to persons with disabilities. A request for an interpreter for the hearing impaired or for other accommodations for persons with disabilities should be made at least 48 hours before the meeting.

THIS NOTICE SATISFIES THE REQUIREMENTS OF ORS 192.630, 192.640 AND 332.045.

For further information or to request accommodations, please contact:
Eddie Symington, Assistant to the Superintendent and School Board
Lincoln County School District | 1212 NE Fogarty | Newport, OR 97365

**LINCOLN COUNTY SCHOOL DISTRICT
Board of Directors – Board Work Session
Wednesday, November 12, 2025 - 5:00 PM
Crestview Heights Elementary, 2750 S Crestline Dr, Waldport, OR 97394**

Agenda

1. Call to Order & Establishment of a Quorum
2. Bond Updates
 - 2.a. Facility Tours
 - 2.b. Architect Presentations on Auditoriums

An architectural rendering of a modern school hallway. The walls are light-colored wood paneling. On the right wall, there are several posters, including one for 'Waldport High School' and another for 'Hamilton: An American Musical'. A large, intricate chandelier hangs from the ceiling. In the foreground, several stylized human figures are walking. The text 'Lincoln County School District' is overlaid in large white font, with 'Newport, Waldport, and Toledo High School' and 'Performing Arts' below it. The word 'Auditorium' is visible above a doorway in the background.

Lincoln County School District

Newport, Waldport, and Toledo High School
Performing Arts

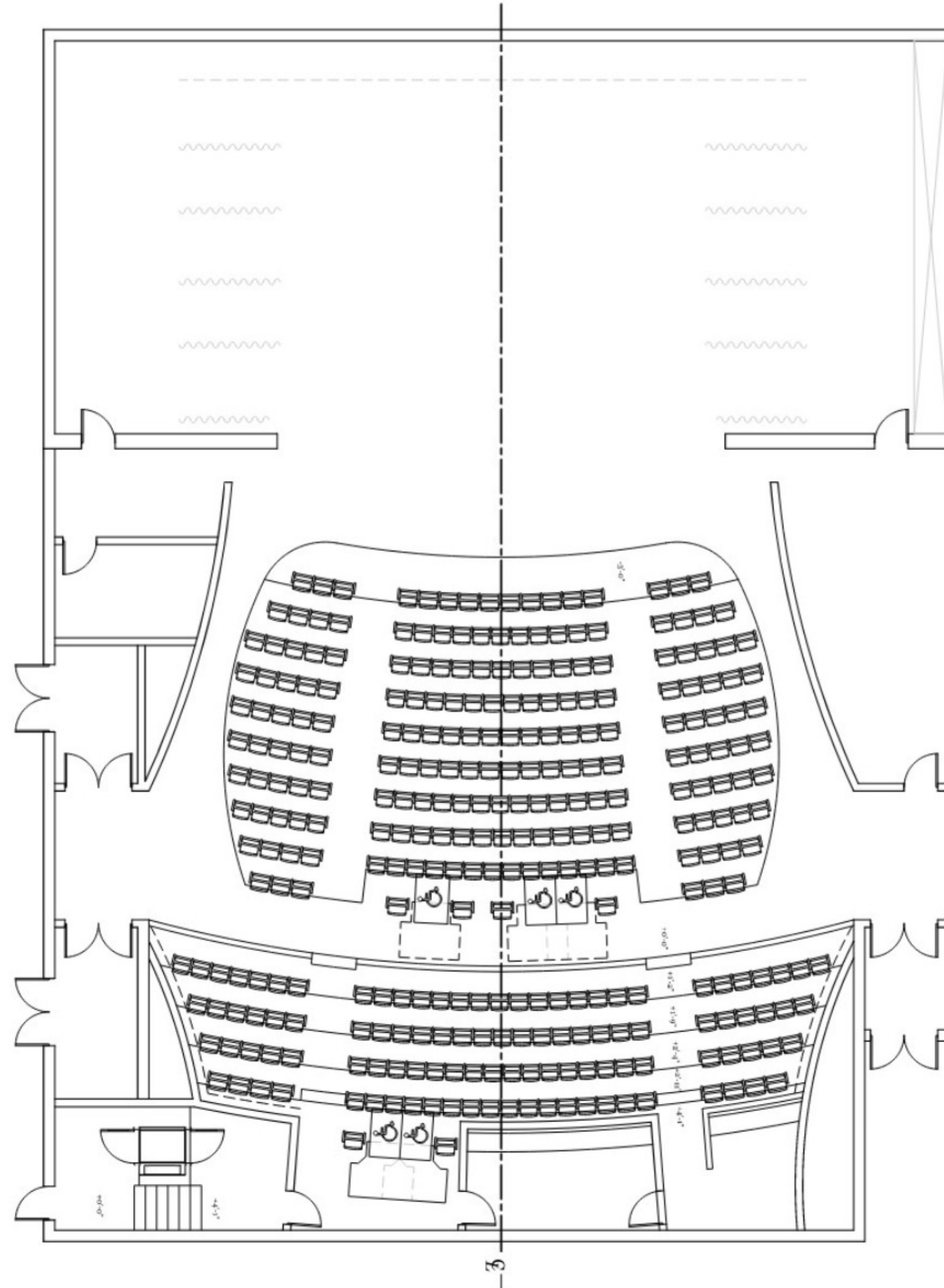
Board Meeting Presentation
November 12, 2025

Agenda

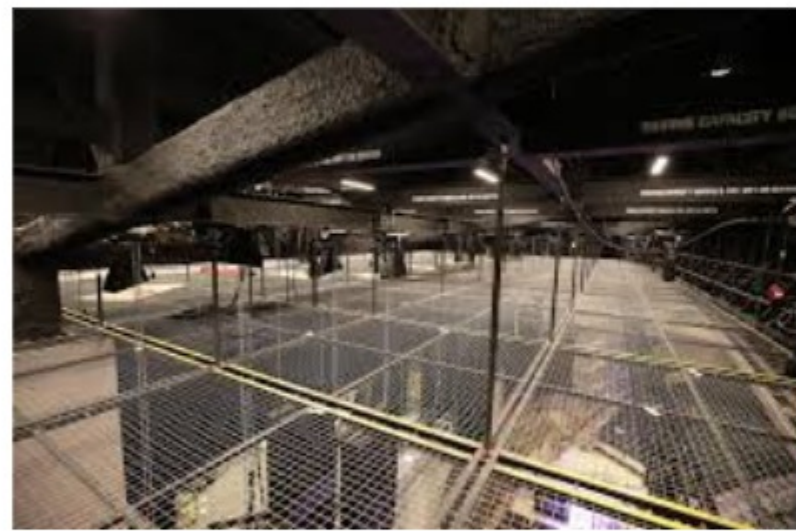
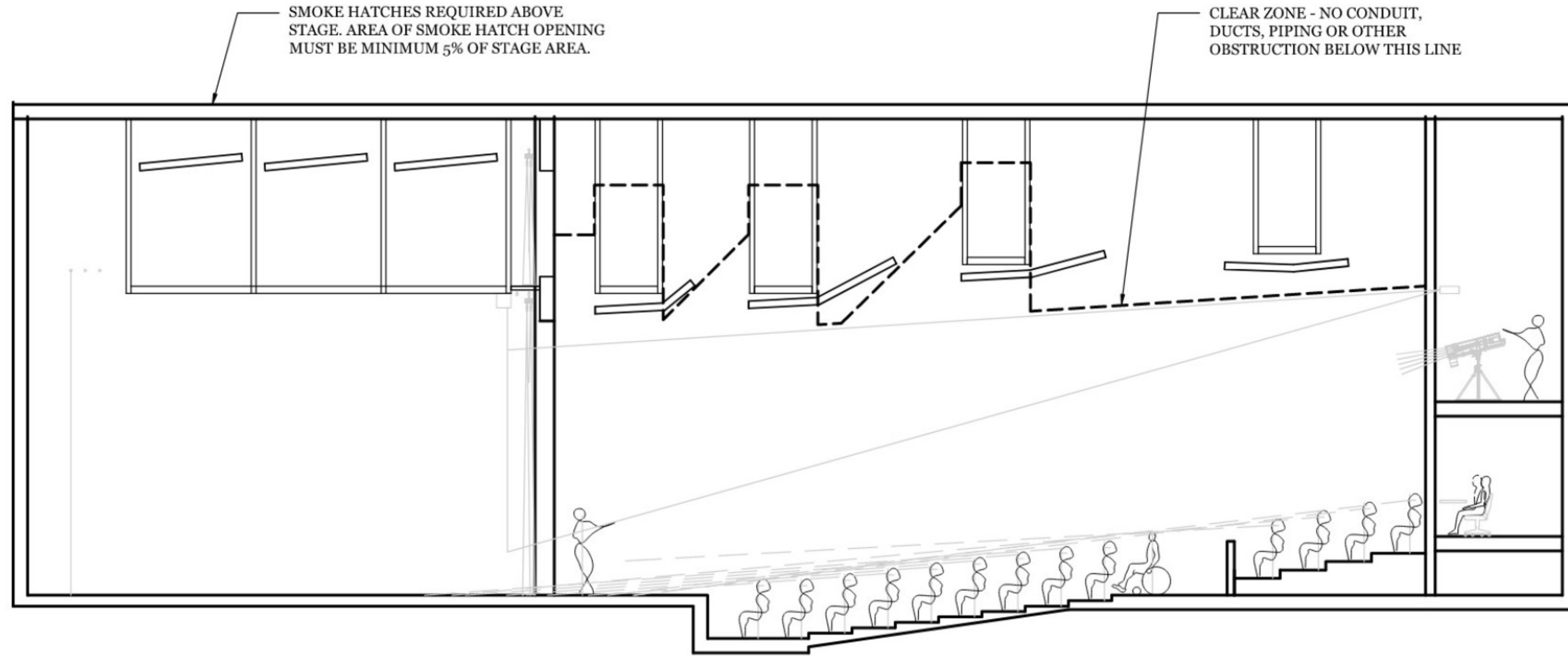
- **Auditorium Concepts**
- **Newport**
 - Plans
 - Massing
- **Waldport**
 - Plans
 - Massing
- **Toledo**
 - Plans
 - Massing

Auditorium Layout

Auditorium Plan



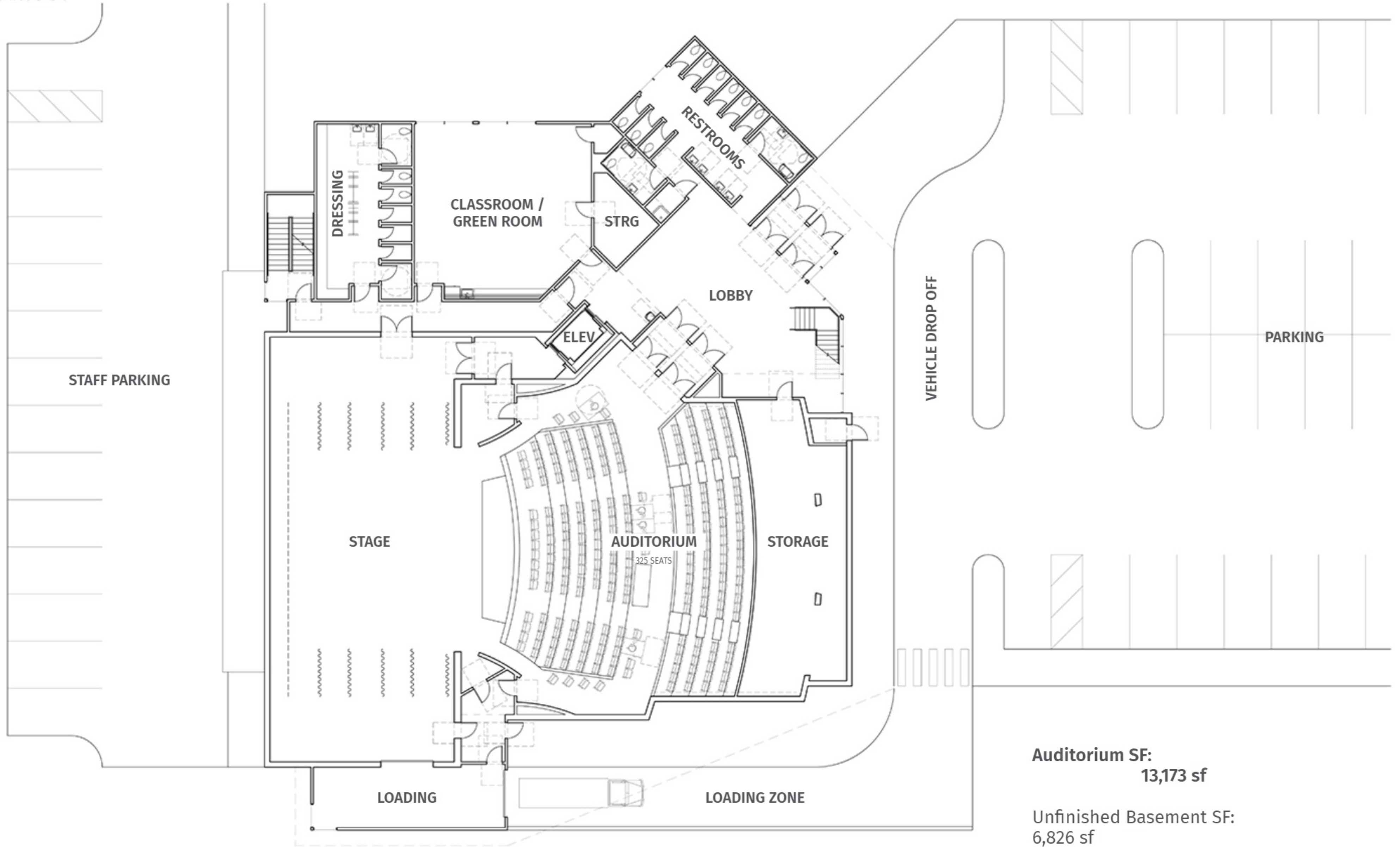
Auditorium Section



Newport High School

Concept Floor Plan - Main Level

Newport High School

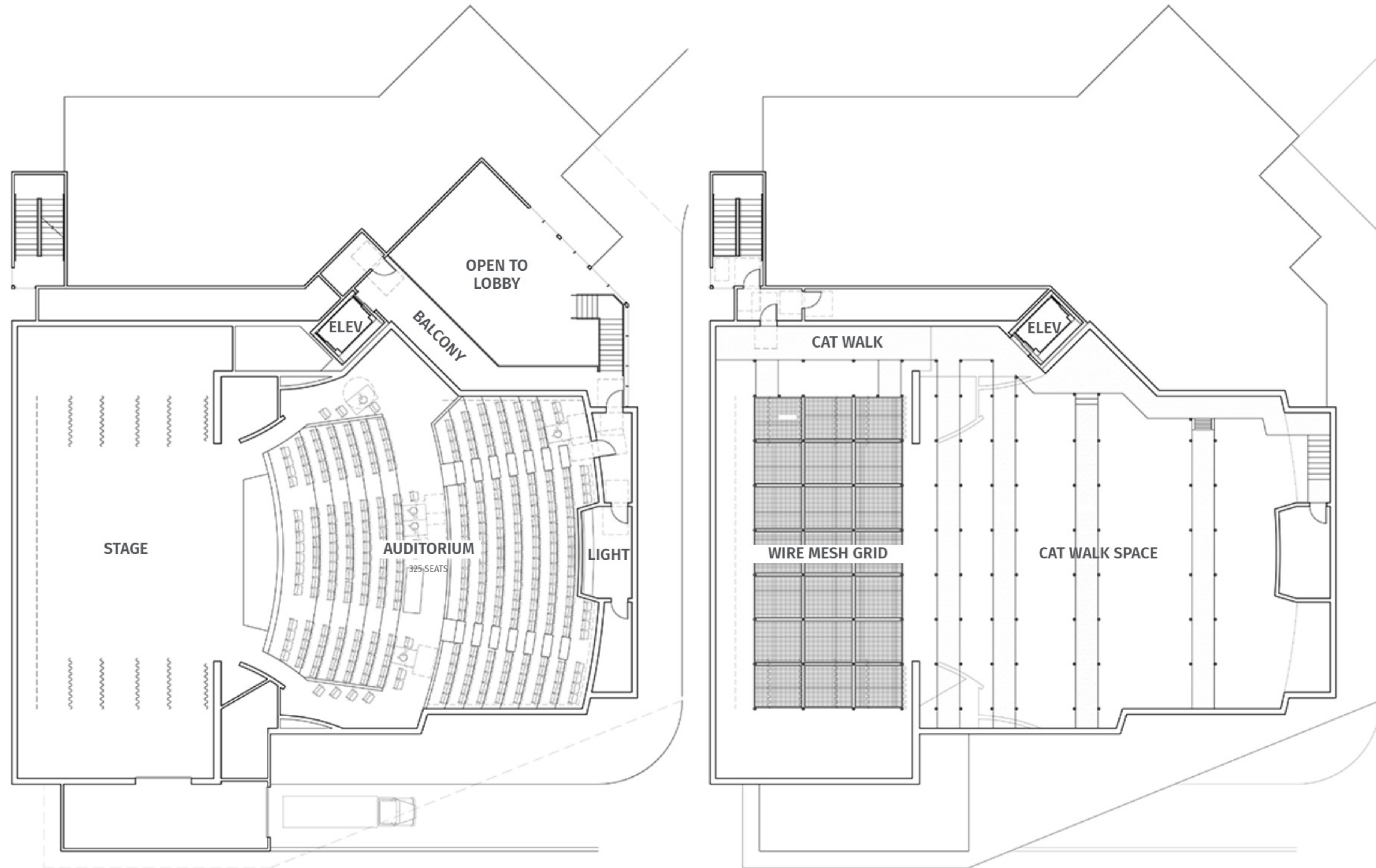


Auditorium SF:
13,173 sf

Unfinished Basement SF:
6,826 sf

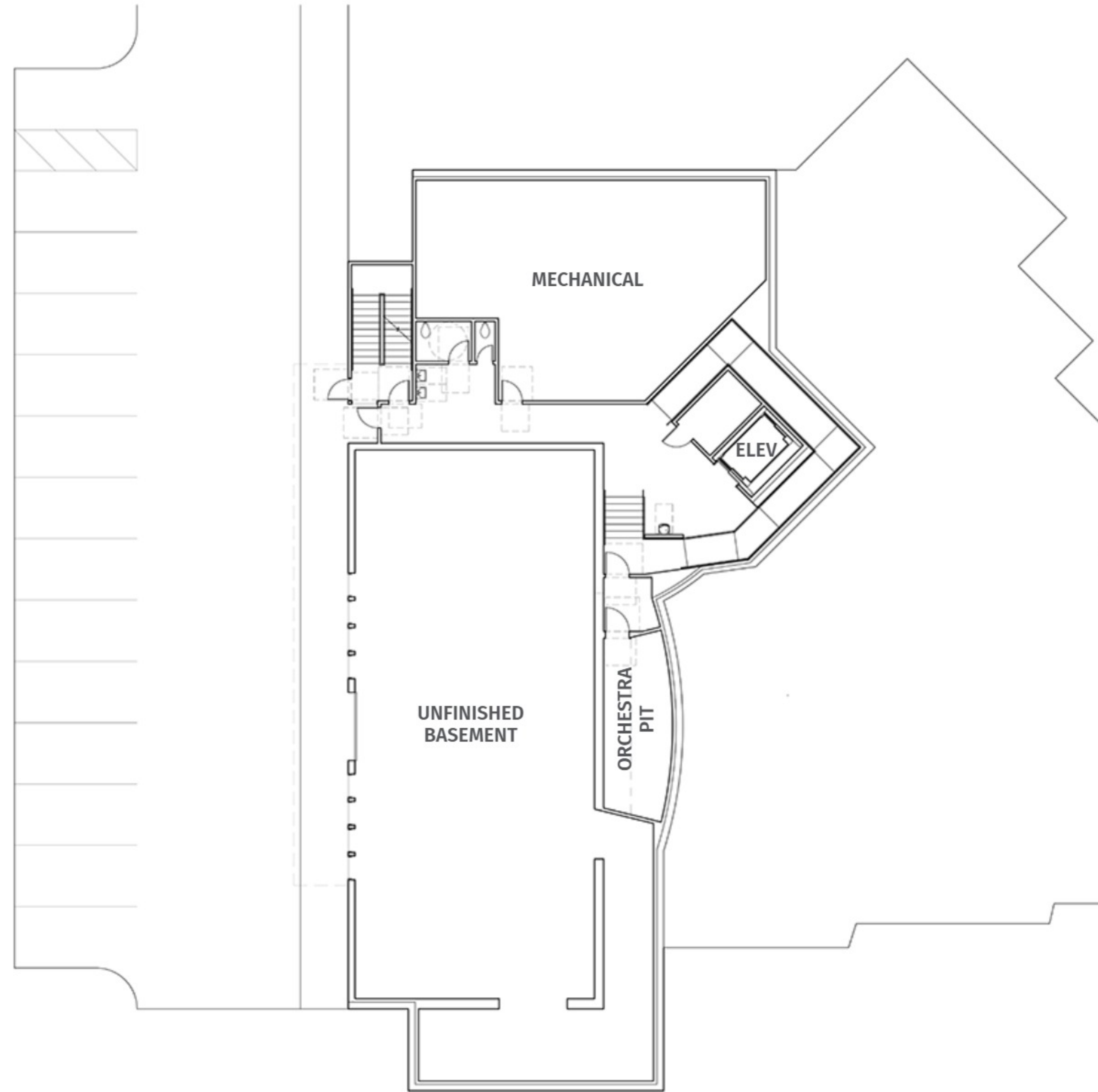
Concept Floor Plan - Upper Level and Cat Walk Level

Newport High School



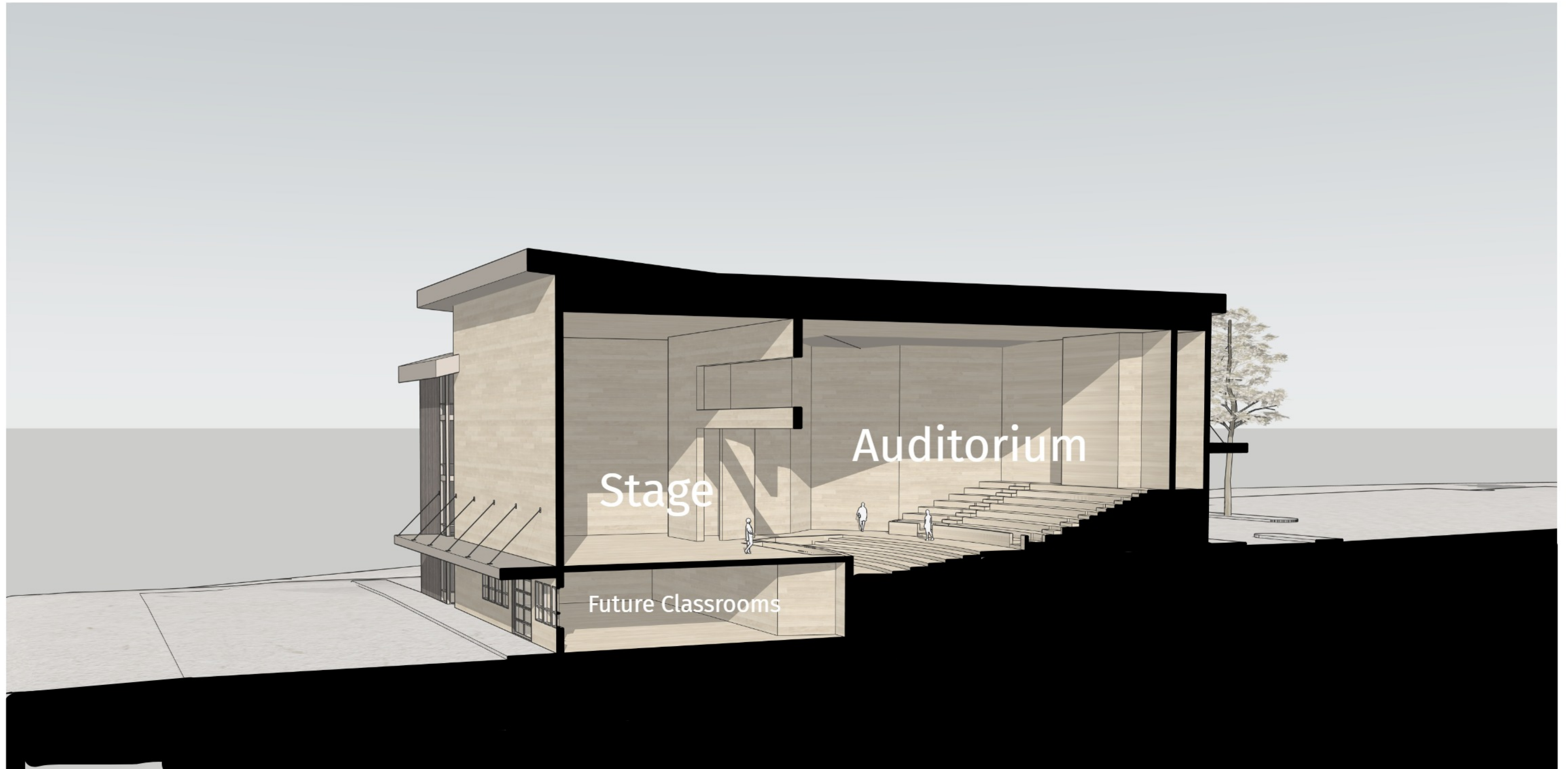
Concept Floor Plan - Basement Level

Newport High School



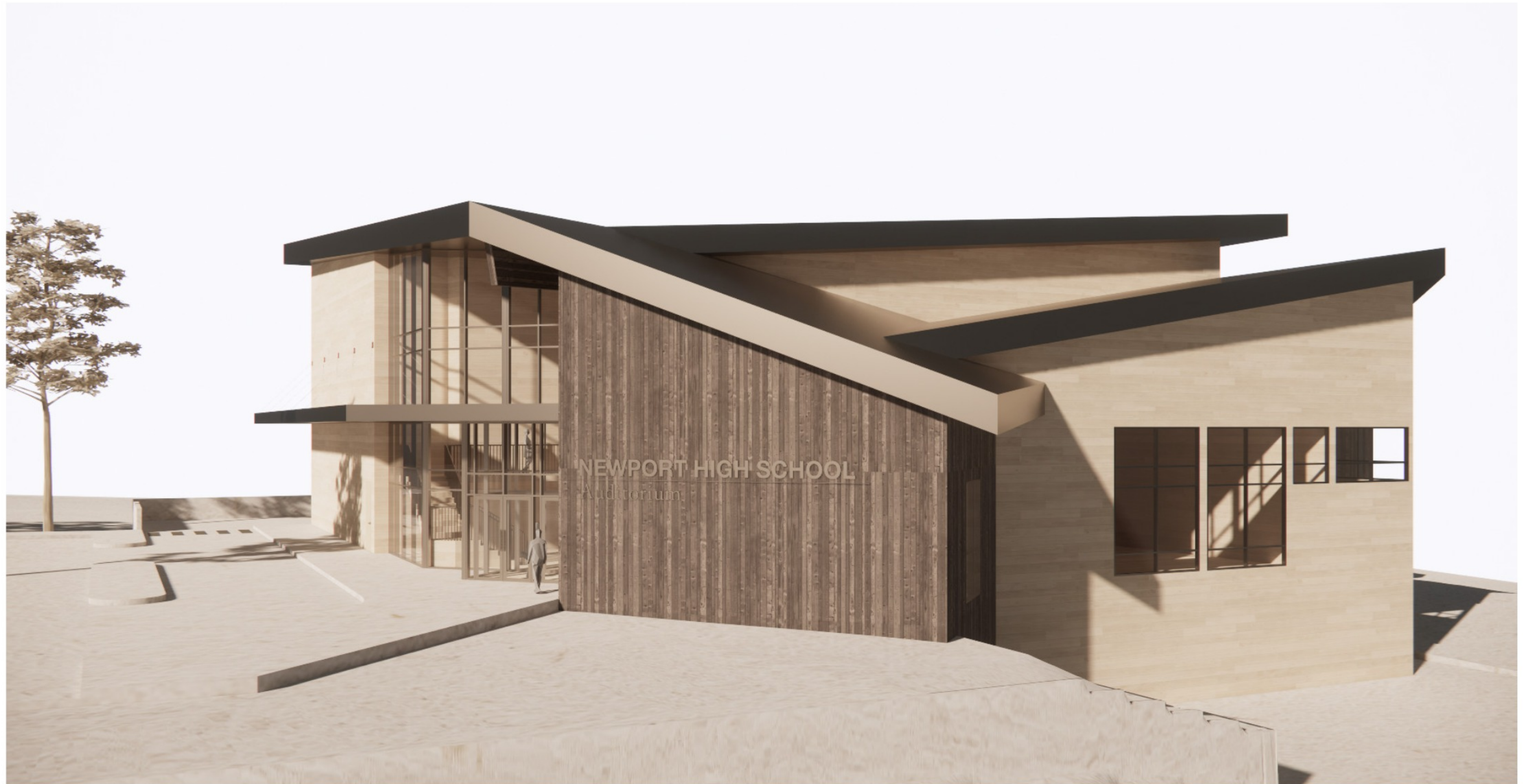
E/W Section Through Auditorium

Newport High School



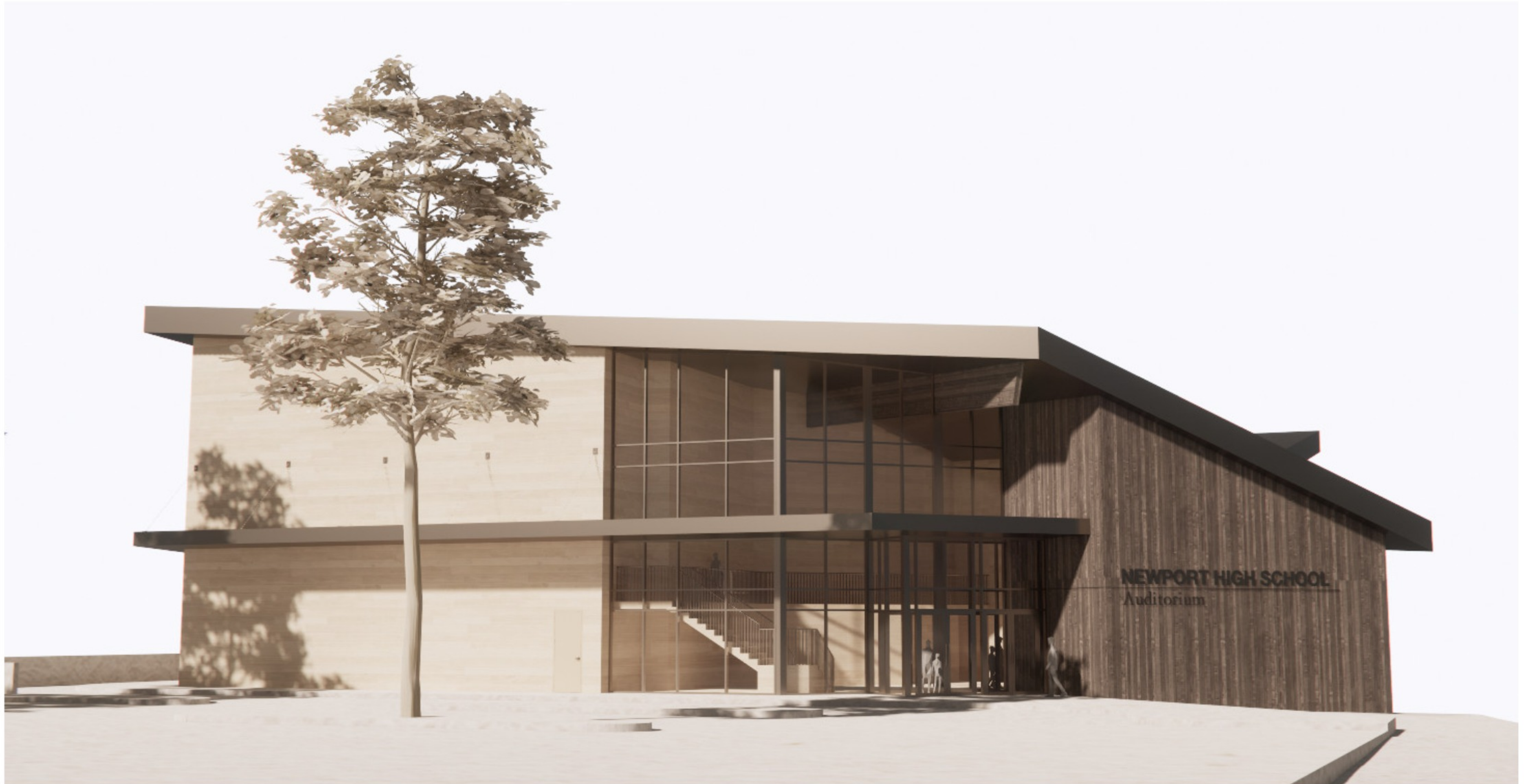
Concept Massing

Newport High School



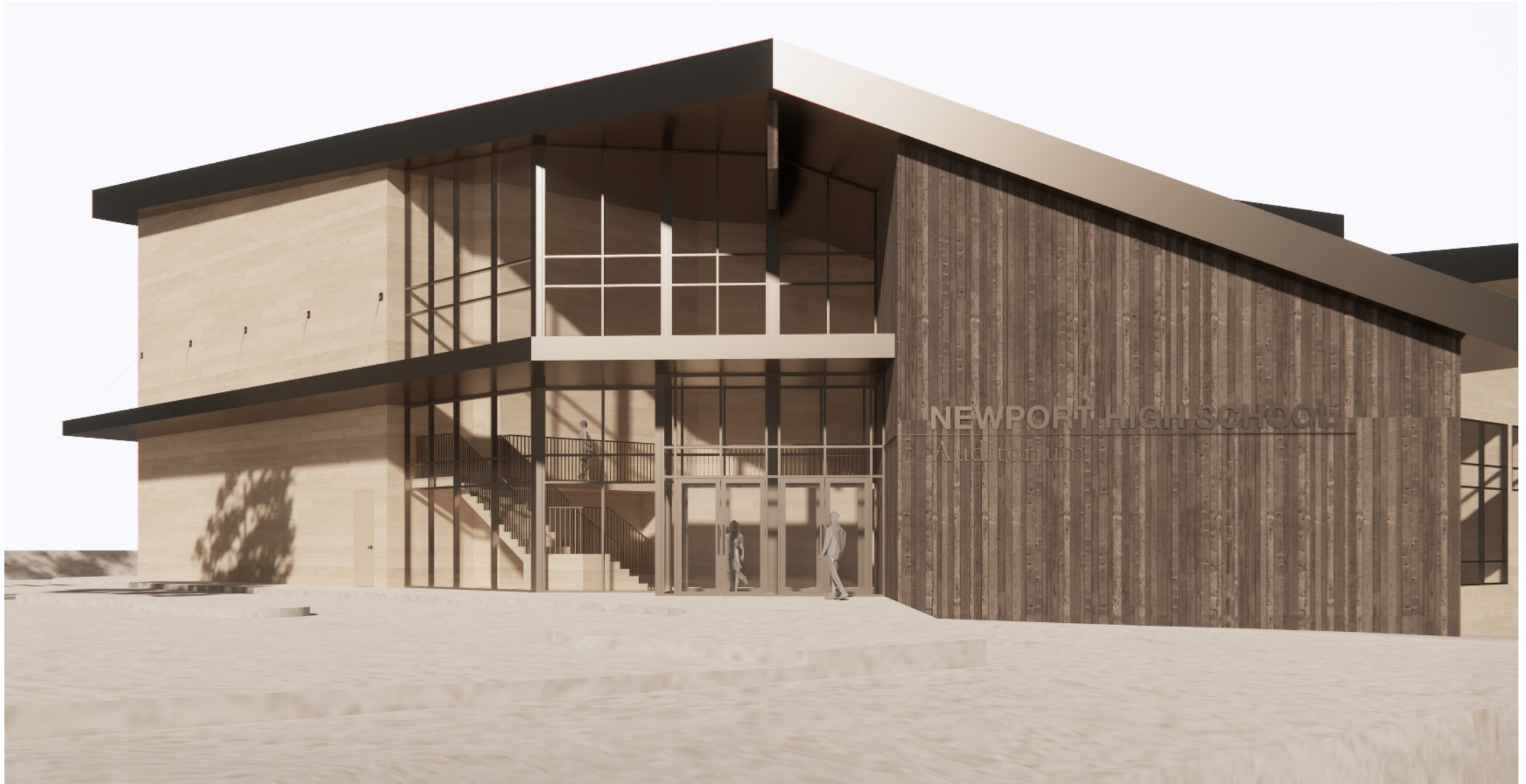
Concept Massing

Newport High School



Concept Massing

Newport High School



Concept Massing

Newport High School



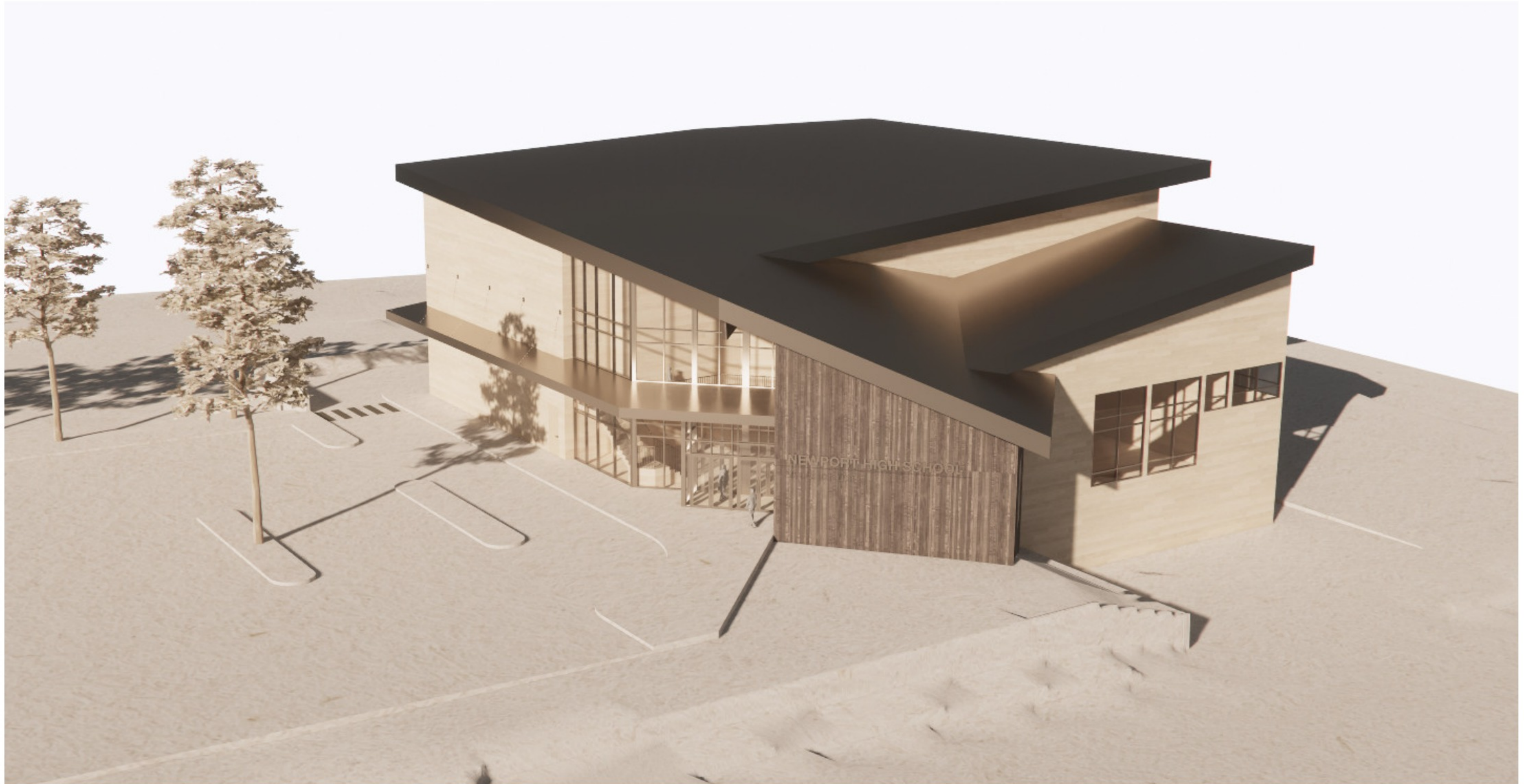
Concept Massing

Newport High School



Concept Massing

Newport High School



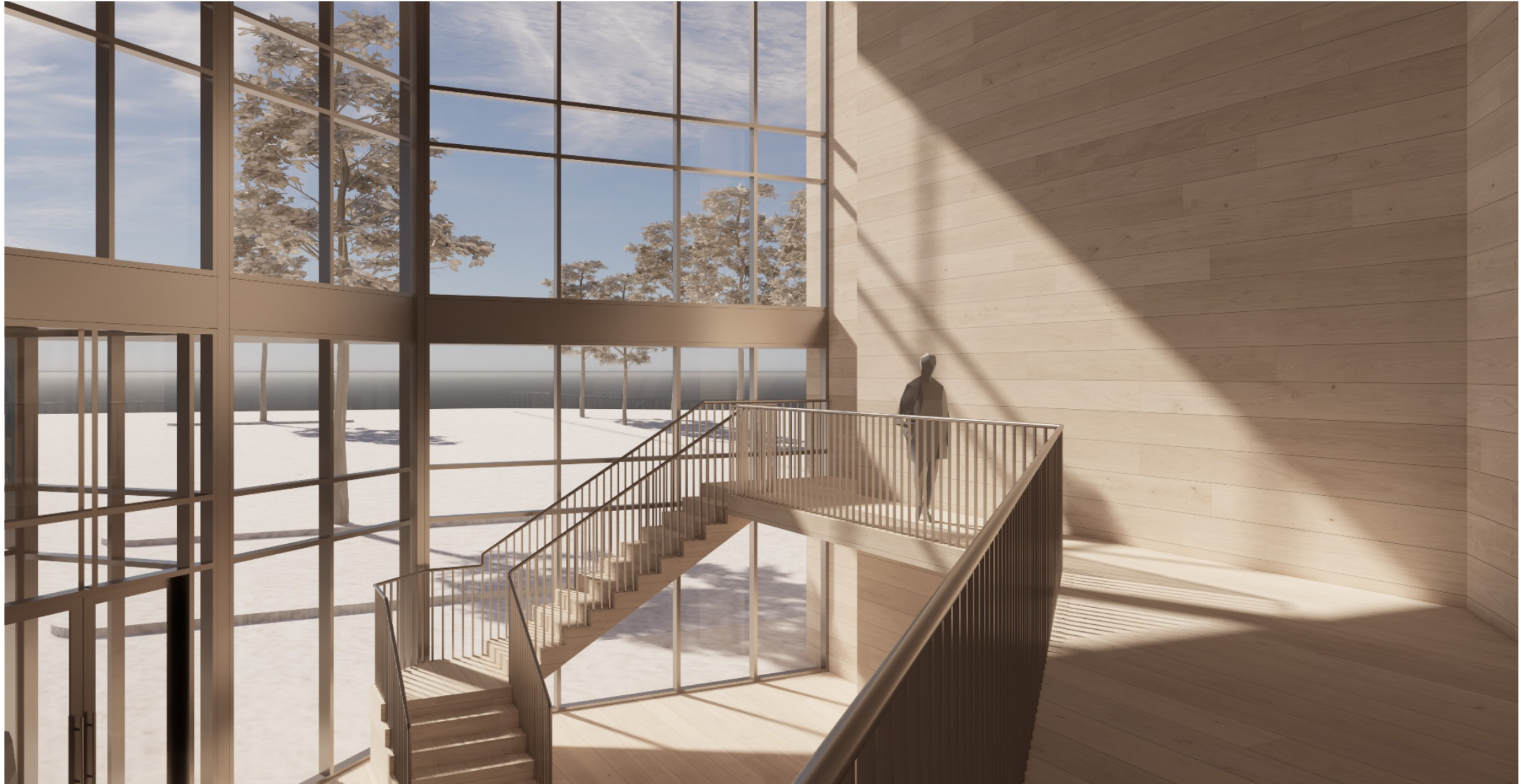
Concept Massing

Newport High School



Concept Massing

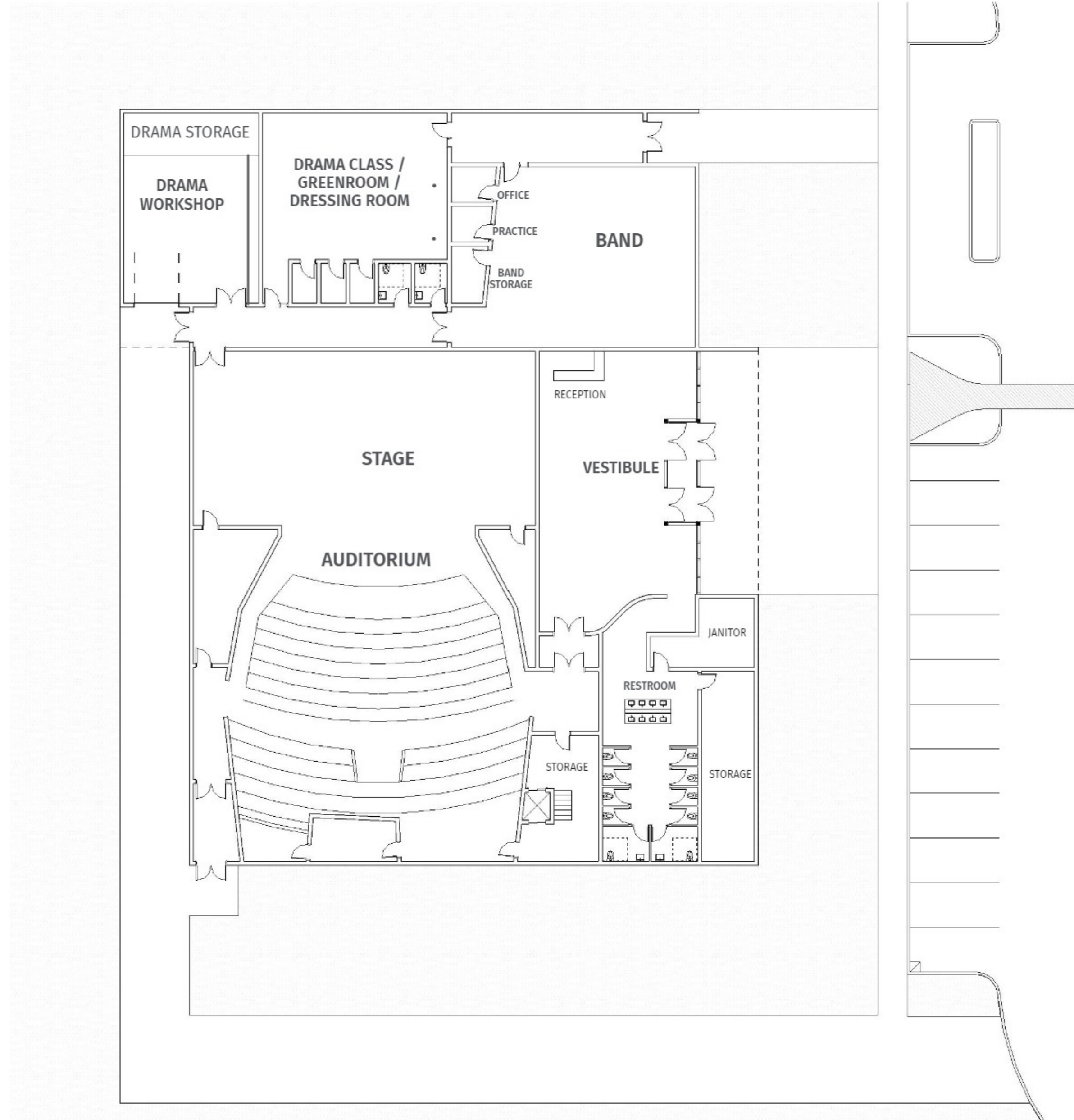
Newport High School



Waldport High School

Concept Floor Plan

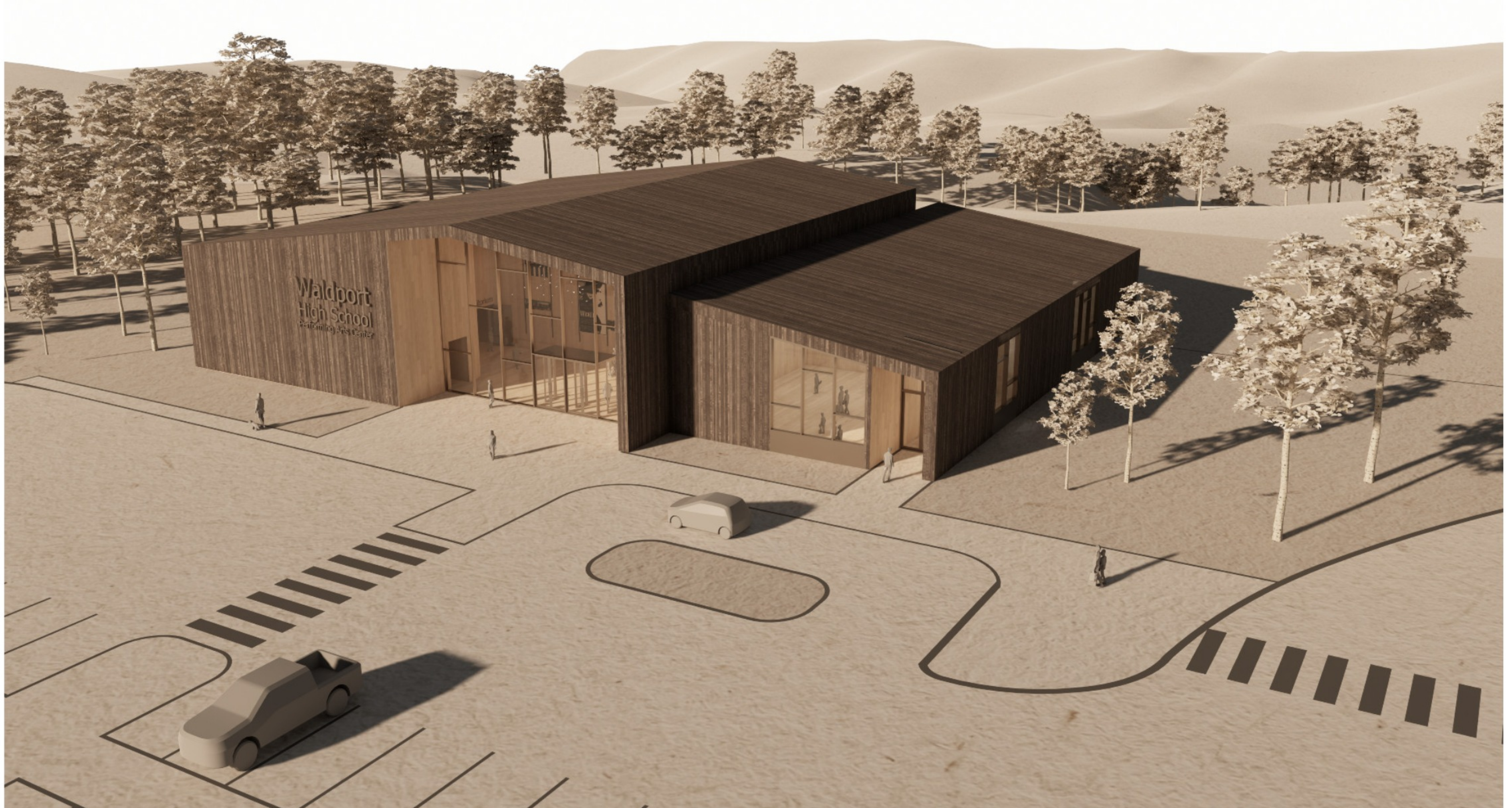
Waldport High School



Total SF:	16,000 sf
Classroom Wing -	5,000 sf
Auditorium -	11,000 sf

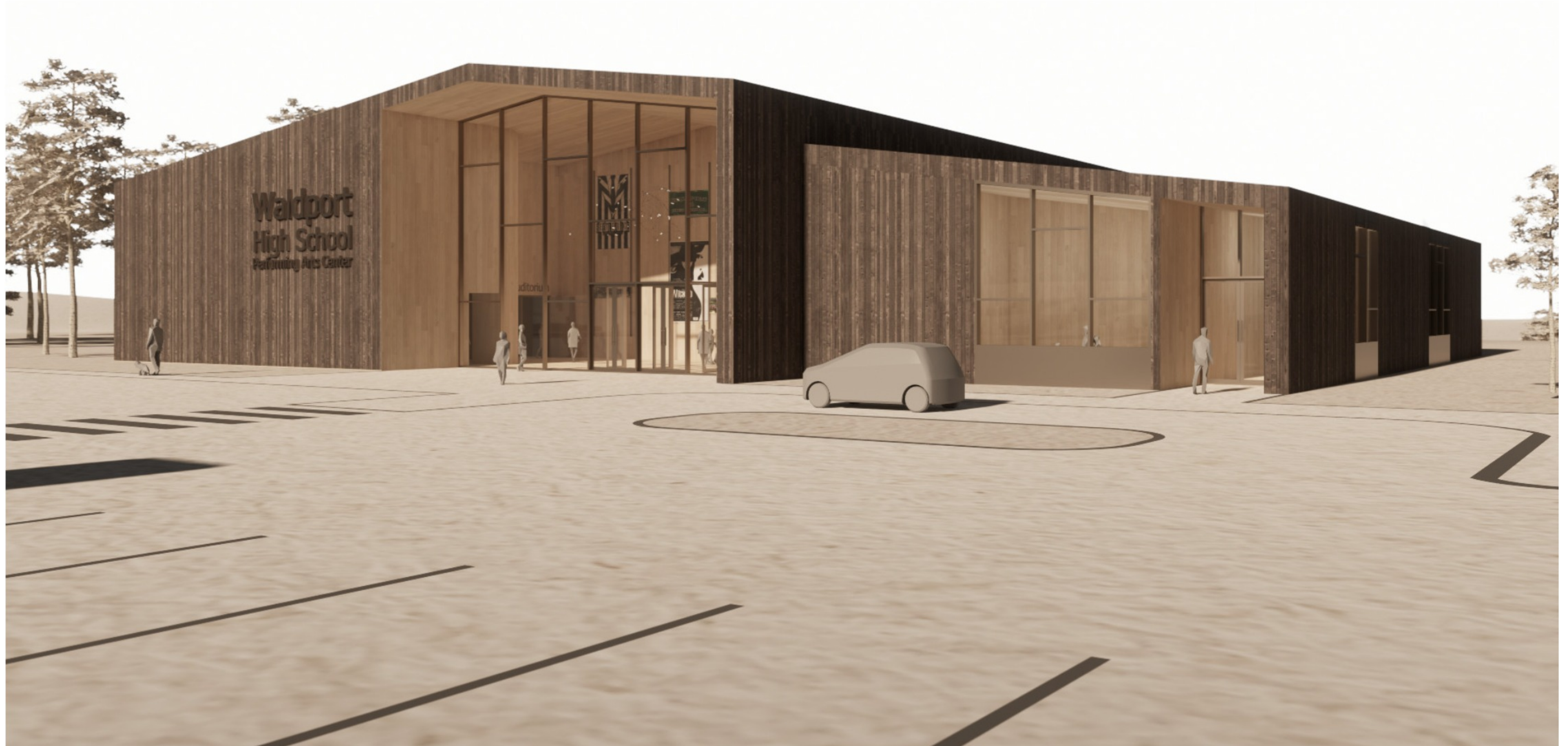
Concept Massing

Waldport High School



Concept Massing

Waldport High School



Concept Massing

Waldport High School



Concept Massing

Waldport High School



Concept Massing

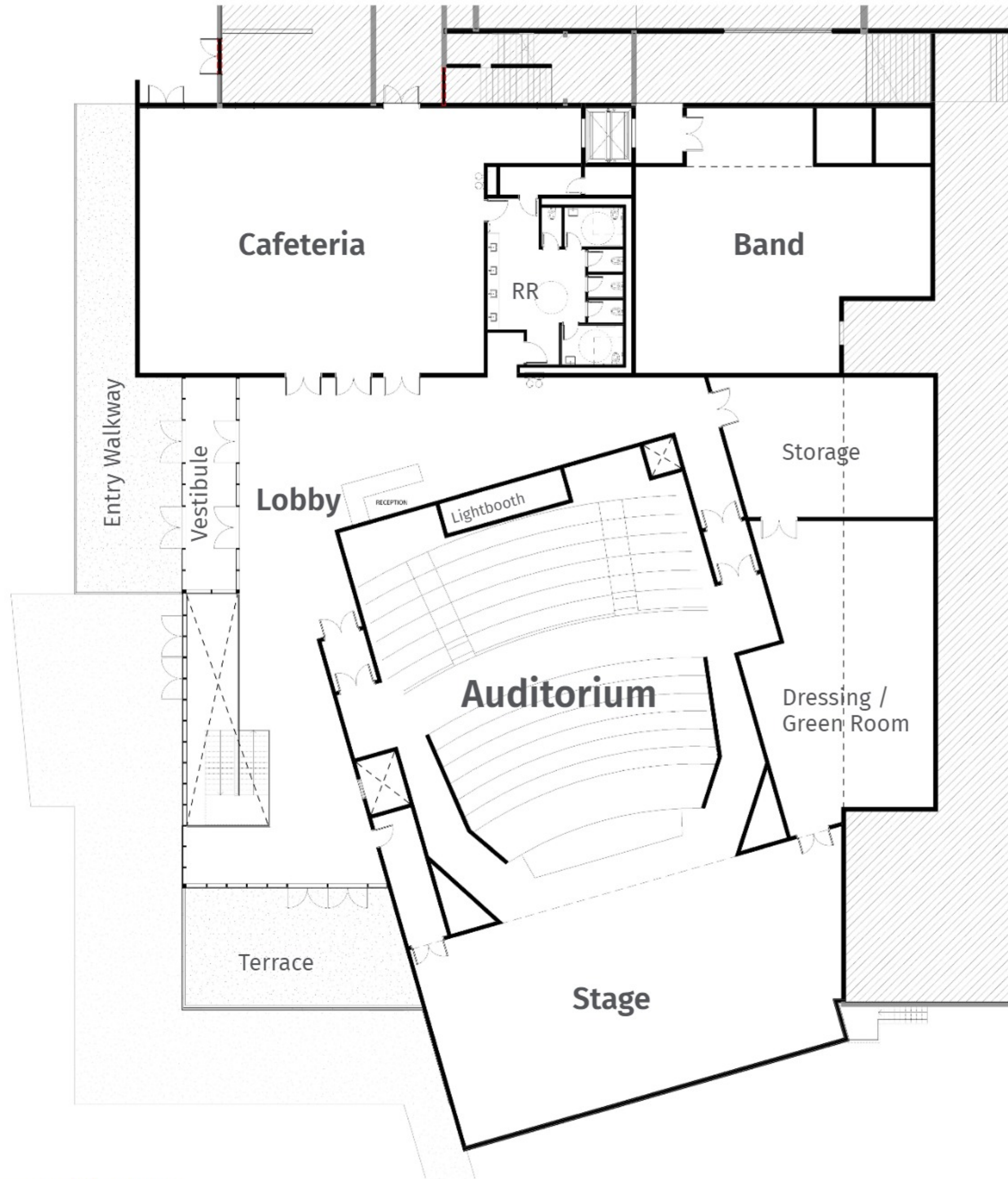
Waldport High School



Toledo High School

Concept Floor Plan - Main Level

Toledo High School

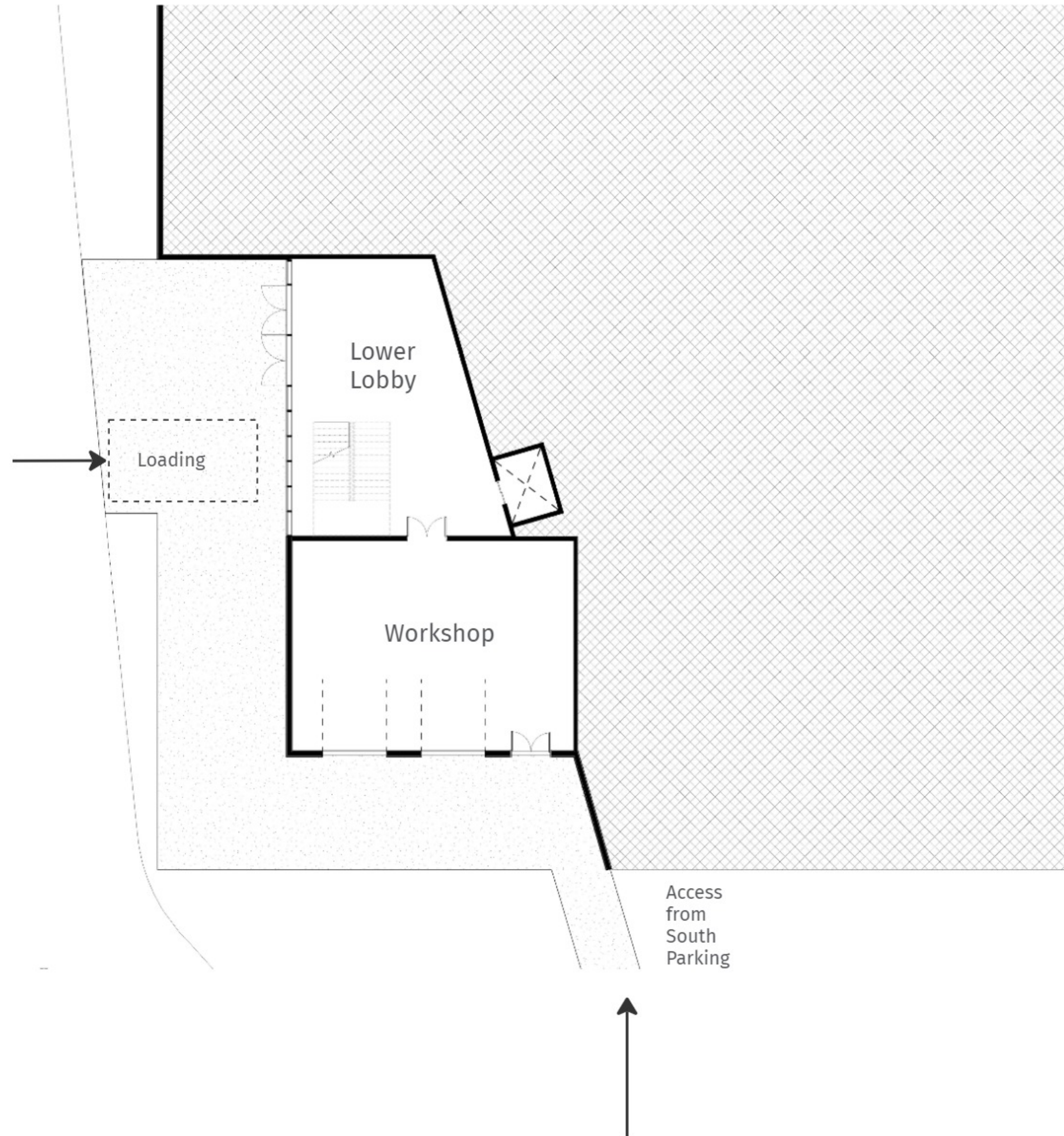


Total SF (new):
Main Floor - 12,000 sf
Basement - 2,200 sf

Total SF (renovated): 7,000 sf

Concept Floor Plan - Basement Level

Toledo High School



Total SF (new):
Main Floor - 12,000 sf
Basement - 2,200 sf
Total SF (renovated): 7,000 sf

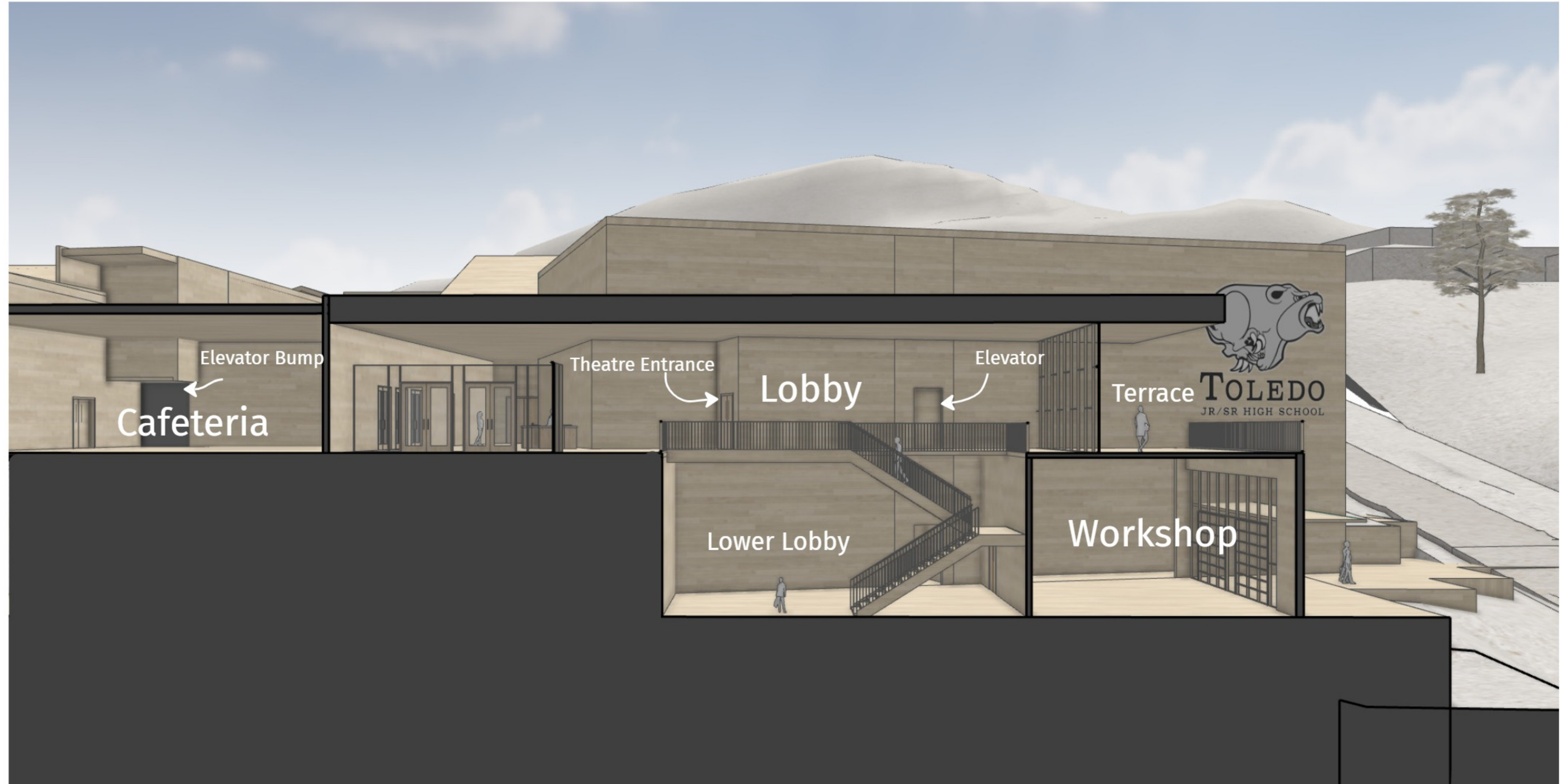
E/W Section Through Auditorium

Toledo High School



N/S Section Through Double Height Lobby

Toledo High School



Concept Massing

Toledo High School



Concept Massing

Toledo High School



Concept Massing

Toledo High School



Concept Massing

Toledo High School



Concept Massing

Toledo High School





Auditorium

Thank you

2.b.1. Waldport Middle/High

2.b.2. Toledo Jr/Sr

2.b.3. Newport High

3. Adjournment

Board Goals 2024-2029

GOAL ONE: Lincoln County School District will establish and meet high expectations for student achievement.

GOAL TWO: Lincoln County School District will create equitable, diverse, inclusive, and accessible learning environments across the district within a framework of excellence in education.

GOAL THREE: LCSD will provide for the long term health and welfare of our facilities and finances, focusing on accessibility, technological innovation, and purposeful utilization.

GOAL FOUR: Lincoln County School District will strengthen community relationships through communication and engagement with staff, students, families, and community partners.

Lincoln County School District Equity Team Land Acknowledgement Statement

We ask that you take a moment to stop what you are doing, to listen to these words as we recognize the land that we currently inhabit. No matter where each of us is physically located in Lincoln County, we must understand that we are on traditional homelands and unceded territories of indigenous peoples. Where we live in Lincoln County, these are the ancestral homelands for the Confederated Tribes of Siletz Indians.

Lincoln County School District acknowledges the Confederated Tribes of Siletz Indians that consists of over 30 bands originating from Northern California to Southern Washington. The Confederated Tribes of Siletz Indians currently occupy and manage 9,310 acres located here in Lincoln County but is a mere fraction of their original 1855 1.1 million-acre Siletz coastal reservation. We must remember the people of the Confederated Tribes of Siletz Indians are and will forever be the first stewards of this land, water, and fish.

We acknowledge and recognize the continued sovereignty of the Confederated Tribes of Siletz Indians and honor their ancestral homelands. We are committed to bringing awareness to their history and the existence of the Confederated Tribes of Siletz Indians since time immemorial.

NON-DISCRIMINATION: Lincoln County Schools do not discriminate nor tolerate discrimination on the basis of an individual's race, color, religion, sex, sexual orientation, national origin, disability, gender identity, marital status or age or because of the race, color, religion, sex, sexual orientation, national origin, disability, gender identity, marital status or age of any other persons with whom the individual associates.