



Corvallis

SCHOOL DISTRICT

NOTICE

NOTICE IS HEREBY GIVEN of a meeting of the Corvallis School District Board of Directors.

| Date & Time | Meeting Type | Location | Agenda |
|--|---------------------|--|---------------|
| Monday, January 28, 2013 6:30 PM | Regular | District Office Board Room, 1555 SW 35th Street, Corvallis, OR 97333 | See attached. |

Accessibility: *To request accommodations for board meetings, please contact Kim Nelson at 541-757-5841 or kim.nelson@corvallis.k12.or.us at least 48 hours before the meeting.*

If you would like to watch live-streaming of the School Board meeting, please navigate to the District's YouTube channel: <https://www.youtube.com/channel/UC9Jtpte5dmilZl9kySBjVQ?> A recording of the meeting will also be posted to that channel.

POSTED: Corvallis School District Administration Building
Hans Boyle, Education Editor, Gazette Times (Via Email)

For more information, please contact Kim Nelson at 541-757-5841 or at kimberly.nelson@corvallis.k12.or.us



Corvallis

SCHOOL DISTRICT

Monday, January 28, 2013
6:30 PM

AGENDA
Work Session of the
BOARD OF DIRECTORS
Corvallis School District 509J

Meeting Details: Monday, January 28, 2013, 6:30 PM in the District Office Board Room,
1555 SW 35th Street, Corvallis, OR 97333.

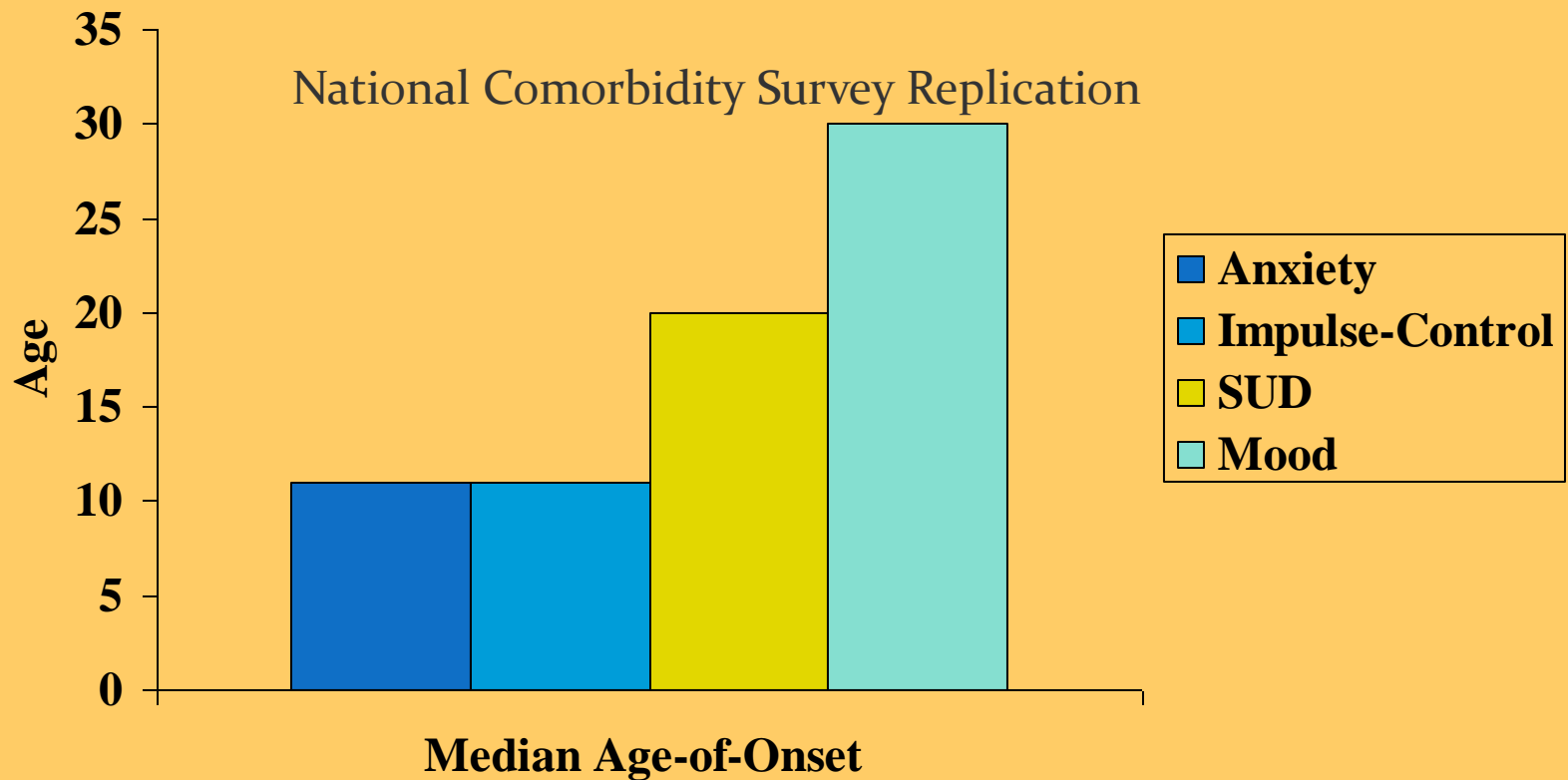
If you would like to watch live-streaming of the School Board meeting, please navigate to the District's YouTube channel: <https://www.youtube.com/channel/UC9Jtpte5dmilZI9kySBJbVQ?> A recording of the meeting will also be posted to that channel.

- I. CALL TO ORDER AND ROLL CALL
- II. PLEDGE OF ALLEGIANCE
- III. SPECIAL REPORTS
 - III.A. Mental Health Services For Youth

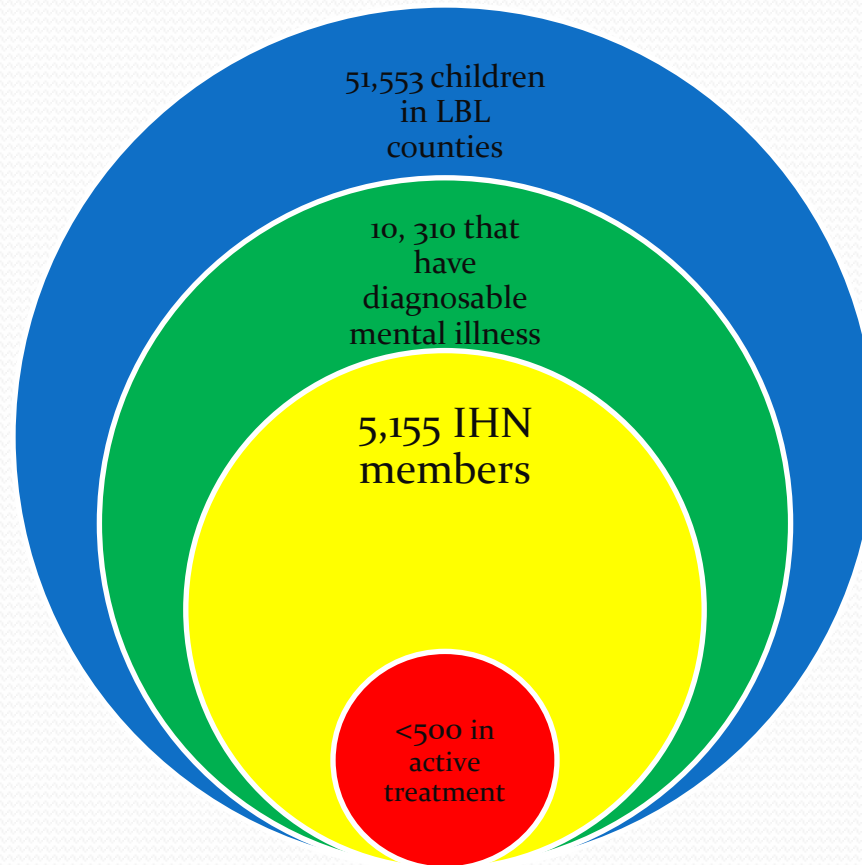
Mental Health Care for Children and Adolescents

Median Age-of-Onset of DSM-IV Disorders

50% of all lifetime disorders start by age 14
75% of all lifetime disorders start by age 24



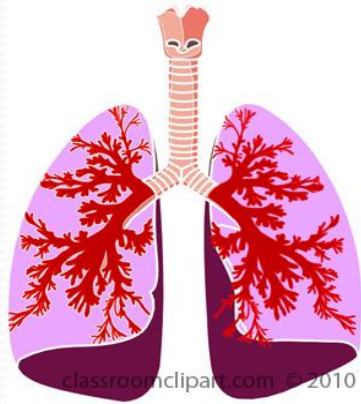
Our Current System of Care For Children in Linn, Benton, and Lincoln Counties



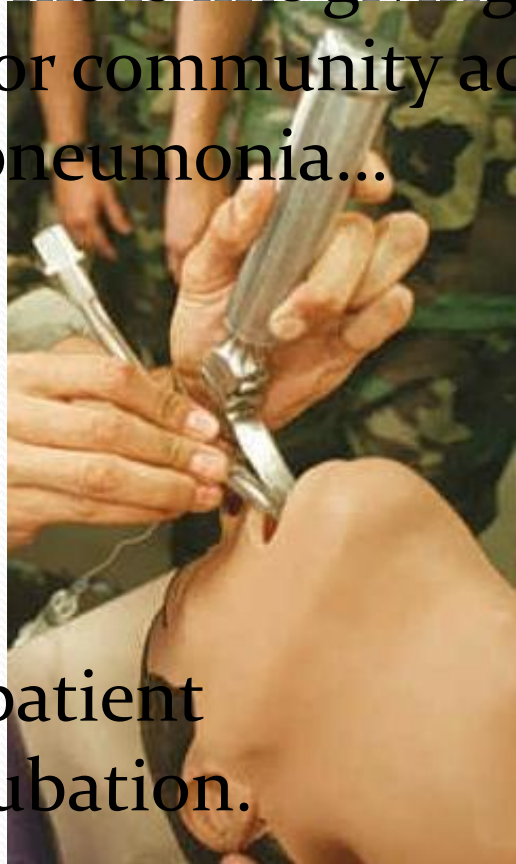
Why so few?

We have chosen to ration the limited resources based loosely on severity, so to be treated, a patient must be “bad enough.”

This has created a system that provides the most expensive care to the fewest patients.



This is like giving antibiotics
for community acquired
pneumonia...



Only if the patient
requires intubation.

What does the ideal system look like?

- Screening
 - Where the kids are, not where we want them to be
- Intervention at lowest level of cost and illness
 - Nip mental illness in the bud
- Outcomes based
 - Patient improves or treatment approach changes
- Addresses lack of resources in the system
 - Child Psychiatry fellowship
 - Developing shared community projects
 - Developing capacity in intermediate levels of treatment
 - extending

How Do We Get There From Here?

- Partnership across community agencies
- School-based screening and intervention
- Primary Care Based Screening and Intervention
- Develop capacity in the system
- Develop intermediate care options
- Better crisis intervention
- Unified Treatment

How Can the Schools Get Involved?

School based screening and intervention

- currently requires “opt in”
- Sara Gelser has filed a bill to allow for opt –out – just like vision, dental, hearing, scoliosis
 - getting warm reception on both sides and with advocates
 - could be as early as fall
- Pilot project with Lebanon schools rolling out this spring

How Can Schools Get Involved?

- Better education for teachers and personnel
 - How can Samaritan help?

How Can Schools Get Involved?

- IEP process and supports
- Let's work together to get the job done right
 - Better outcomes for kids
 - Better outcomes for peers
 - Better jobs for teachers



Corvallis

SCHOOL DISTRICT

- III.B. School Resource Deputy Services From Benton County
- III.C. Achievement Compact Advisory Committee

K-12 / ESD Achievement Compact
Corvallis SD - 1901

| College and Career Ready: Are students completing high school ready for college or career? | | | | | | | | | | |
|---|------------------------|----------------|------------------------|----------------|------------------------|----------------|------------------------|----------------|--------------------------|----------------|
| | 9th graders of 2006-07 | Dis-advantaged | 9th graders of 2007-08 | Dis-advantaged | 9th graders of 2008-09 | Dis-advantaged | 9th graders of 2009-10 | Dis-advantaged | 9th graders of 2012-13** | Dis-advantaged |
| 4-Year Graduation Rate | 72% | 55% | 70% | 54% | ? | ? | 77% | 60% | 86% | 75% |
| 5-Year Graduation Rate | 74% | 58% | | | ? | ? | 79% | 63% | 88% | 78% |
| 5-Year Completion Rate | 83% | 74% | | | 86% | 79% | 89% | 82% | 95% | 91% |
| Post-Secondary Enrollment | 75% | 61% | | | 78% | 66% | 81% | 71% | | |
| Earning 9+ College Credits | | | | | | | | | | |

Disadvantaged is aggregate of disadvantaged student groups (details on pp. 2-4)

Gray shaded boxes are district-provided projections and goals **2012-13 goals are optional

| Progression: Are students making sufficient progress toward college and career readiness? | | | | | | | | | | |
|--|---|----------------|-------------|----------------|-------------|-----------------|------------------|----------------|-------------------------|----------------|
| | 2009-10 All | Dis-advantaged | 2010-11 All | Dis-advantaged | 2011-12 All | *Dis-advantaged | 2012-13 Goal All | Dis-advantaged | 4-Year Goal (2015-16)** | Dis-advantaged |
| Ready for School | Kindergarten readiness assessment under development | | | | | | | | | |
| 3rd Gr. Reading Proficiency | ***68% | ***53% | ***69% | ***55% | 85% | 75% | 88% | 78% | 95% | 87% |
| 3rd Gr. Math Proficiency | ***52% | ***37% | 71% | 58% | 72% | 53% | 77% | 63% | 86% | 73% |
| 6th Grade On-Track | 92% | 89% | 85% | 81% | 90% | 83% | 93% | 86% | 95% | 95% |
| 9th Grade On-Track | | | | | | | | | | |

*Estimate based on most recent available data **2016 Goals are optional ***Adjusted to reflect 2011-12 Cut Scores

| Equity: Are students succeeding across all buildings and populations? | | | | | | | | | | |
|--|---------|---------|--|---------|--|--------------|--|-------------------------|--|--|
| | 2009-10 | 2010-11 | | 2011-12 | | 2012-13 Goal | | 4-Year Goal (2015-16)** | | |
| Priority & Focus Schools* | NA | NA | | NA | | NA | | NA | | |
| DISAGGREGATED DATA AND GOALS FOR EACH DISADVANTAGED STUDENT GROUP LISTED ON PP 2-4 | | | | | | | | | | |

*Prior to 2012-13, school in federal AYP "Need Improvement" status **4-year Goals are optional

| Local Priorities: What other measures reflect key priorities in the district? (optional, up to 3) | | | | | | | | | | |
|--|---------|----------------|----------|----------------|---------|----------------|---------|----------------|---------------|----------------|
| | 2011-12 | Dis-advantaged | 2012-13 | Dis-advantaged | 2013-14 | Dis-advantaged | 2014-15 | Dis-advantaged | 4-Year Goal** | Dis-advantaged |
| 8th Grade ACT Explore | | | Baseline | Baseline | | | | | | |
| 9th Grade Algebra Completion | ? | ? | | ? | | | | | | |

**4-year Goal optional

| Investment: What is the public investment in the district? (does not include capital investments) | | | | | | | | | | |
|--|--------------|--------------|--------------|-------------------------|-------------------|--|--|--|--|--|
| | 2010-11 | 2011-12* | 2012-13* | 2012-13 QEM recommended | | | | | | |
| Formula Revenue | \$43,467,993 | \$44,389,421 | \$44,471,568 | \$59,972,929 | District Share | | | | | |
| Local Revenue not passed through formula | \$10,836,990 | | | | District Official | | | | | |
| Federal Revenue | \$7,024,380 | | | | | | | | | |
| State Grants not passed through formula | \$187,479 | | | | | | | | | |

The tan fields are optional. Districts will fill the blue fields with their targets, the gray fields with estimates of current/past data (if available).

OEIB Chief Education Officer

K-12 / ESD Achievement Compact
Corvallis SD - 1901

| Equity: Are students succeeding across all populations? | | | | | | | | | |
|---|----------------------------|----------------------------|----------------------------|--------------------------------|-----------------|---------------------------------|------------------|-------|---------------------------------|
| 9th Graders of 2006-07 | | | | | | | | | |
| | Economically Disadvantaged | Limited English Proficient | Students with Disabilities | Black (not of Hispanic origin) | Hispanic origin | American Indian / Alaska Native | Pacific Islander | Asian | TAG (not included in aggregate) |
| 4-Year Graduation Rate | 55% | 68% | 34% | 67% | 62% | * | | 87% | 90% |
| 5-Year Graduation Rate | 60% | 69% | 40% | 62% | 64% | * | | 89% | 90% |
| 5-Year Completion Rate | 72% | 72% | 63% | 77% | 75% | * | | 89% | 95% |
| Earning 9+ College Credits | | | | | | | | | |
| Post-Secondary Enrollment | 58% | 64% | 37% | 67% | 64% | * | | 82% | 91% |
| 2009-10 | | | | | | | | | |
| *3rd Gr. Reading Proficiency | 48% | 30% | 42% | 86% | 29% | * | - | 85% | 92% |
| *3rd Gr. Math Proficiency | 36% | 28% | 32% | 57% | 22% | * | - | 73% | 86% |
| 6th Grade On-Track | 87% | 91% | 86% | 71% | 91% | * | - | >95% | 93% |
| 9th Grade On-Track | | | | | | | | | |

*Adjusted to reflect 2011-12 Cut Scores

| 9th Graders of 2007-08 | | | | | | | | | |
|------------------------------|----------------------------|----------------------------|----------------------------|--------------------------------|-----------------|---------------------------------|------------------|-------|---------------------------------|
| | Economically Disadvantaged | Limited English Proficient | Students with Disabilities | Black (not of Hispanic origin) | Hispanic origin | American Indian / Alaska Native | Pacific Islander | Asian | TAG (not included in aggregate) |
| 4-Year Graduation Rate | 51% | 51% | 52% | 56% | 57% | * | | 64% | 90% |
| 5-Year Graduation Rate | | | | | | | | | |
| 5-Year Completion Rate | | | | | | | | | |
| Earning 9+ College Credits | | | | | | | | | |
| Post-Secondary Enrollment | | | | | | | | | |
| 2010-11 | | | | | | | | | |
| *3rd Gr. Reading Proficiency | 51% | 33% | 55% | * | 46% | * | * | 70% | >95% |
| 3rd Gr. Math Proficiency | 52% | 48% | 59% | * | 58% | * | * | 75% | >95% |
| 6th Grade On-Track | 77% | >95% | 84% | * | 87% | * | >95% | >95% | 92% |

*Adjusted to reflect 2011-12 Cut Scores

The tan fields are optional. Districts will fill the blue fields with their targets, the gray fields with estimates of current/past data (if available).

K-12 / ESD Achievement Compact
Corvallis SD - 1901

| 9th Graders of 2008-09 | | | | | | | | | |
|-----------------------------|----------------------------|----------------------------|----------------------------|--------------------------------|-----------------|---------------------------------|------------------|-------|---------------------------------|
| | Economically Disadvantaged | Limited English Proficient | Students with Disabilities | Black (not of Hispanic origin) | Hispanic origin | American Indian / Alaska Native | Pacific Islander | Asian | TAG (not included in aggregate) |
| 9th Grade On-Track | | | | | | | | | |
| 4-Year Graduation Rate | | | | | | | | | |
| 5-Year Graduation Rate | | | | | | | | | |
| 5-Year Completion Rate | | | | | | | | | |
| Earning 9+ College Credits | | | | | | | | | |
| Post-Secondary Enrollment | | | | | | | | | |
| 2011-12 | | | | | | | | | |
| 3rd Gr. Reading Proficiency | 69% | 51% | 54% | 86% | 61% | 67% | * | >95% | >95% |
| 3rd Gr. Math Proficiency | 49% | 33% | 52% | 71% | 33% | 17% | * | >95% | 93% |
| 6th Grade On-Track | 83% | 90% | 78% | 86% | 85% | 86% | >95% | >95% | 90% |
| 9th Grade On-Track | | | | | | | | | |

| 9th Graders of 2009-10 Goals | | | | | | | | | |
|------------------------------|----------------------------|----------------------------|----------------------------|--------------------------------|-----------------|---------------------------------|------------------|-------|---------------------------------|
| | Economically Disadvantaged | Limited English Proficient | Students with Disabilities | Black (not of Hispanic origin) | Hispanic origin | American Indian / Alaska Native | Pacific Islander | Asian | TAG (not included in aggregate) |
| 4-Year Graduation Rate | 53% | 53% | 55% | 58% | 59% | * | * | 65% | 91% |
| 5-Year Graduation Rate | 65% | 74% | 44% | 66% | 68% | * | * | 91% | 91% |
| 5-Year Completion Rate | 77% | 77% | 70% | 82% | 80% | * | * | 91% | >95% |
| Earning 9+ College Credits | | | | | | | | | |
| Post-Secondary Enrollment | 62% | 69% | 41% | 71% | 68% | * | * | 84% | 92% |
| 2012-13 | | | | | | | | | |
| 3rd Gr. Reading Proficiency | 74% | 56% | 59% | 89% | 66% | 72% | * | >95% | >95% |
| 3rd Gr. Math Proficiency | 62% | 58% | 64% | 76% | 63% | 27% | * | >95% | >95% |
| 6th Grade On-Track | 86% | >95% | 87% | 89% | 90% | 89% | >95% | >95% | 93% |
| 9th Grade On-Track | | | | | | | | | |

*Adjusted to reflect 2011-12 Cut Scores

The tan fields are optional. Districts will fill the blue fields with their targets, the gray fields with estimates of current/past data (if available).

K-12 / ESD Achievement Compact
Corvallis SD - 1901

| 9th Graders of 2012-13 (Optional 4-Year Goals) | | | | | | | | | |
|--|----------------------------|----------------------------|----------------------------|--------------------------------|-----------------|---------------------------------|------------------|-------|---------------------------------|
| | Economically Disadvantaged | Limited English Proficient | Students with Disabilities | Black (not of Hispanic origin) | Hispanic origin | American Indian / Alaska Native | Pacific Islander | Asian | TAG (not included in aggregate) |
| 4-Year Graduation Rate | | | | | | | | | |
| 5-Year Graduation Rate | | | | | | | | | |
| 5-Year Completion Rate | | | | | | | | | |
| Earning 9+ College Credits | | | | | | | | | |
| Post-Secondary Enrollment | | | | | | | | | |
| 2015-16 | | | | | | | | | |
| 3rd Gr. Reading Proficiency | 85% | 71% | 74% | 95% | 79% | 83% | * | 95% | 95% |
| 3rd Gr. Math Proficiency | 72% | 68% | 79% | 85% | 78% | 57% | * | 95% | 95% |
| 6th Grade On-Track | 95% | 95% | 95% | 95% | 95% | 95% | 95% | 95% | 95% |
| 9th Grade On-Track | | | | | | | | | |

*Adjusted to reflect 2011-12 Cut Scores

The tan fields are optional. Districts will fill the blue fields with their targets, the gray fields with estimates of current/past data (if available).

Final K-12 / ESD Achievement Compact Template
January 2013

| College and Career Ready: Are students completing high school ready for college or career? | | | | | | | | | | |
|---|------------------------|----------------|------------------------|----------------|------------------------|----------------|------------------------|----------------|--------------------------|----------------|
| | 9th graders of 2007-08 | Dis-advantaged | 9th graders of 2008-09 | Dis-advantaged | 9th graders of 2009-10 | Dis-advantaged | 9th graders of 2010-11 | Dis-advantaged | 9th graders of 2013-14** | Dis-advantaged |
| 4-Year Cohort Graduation | | | | | | | | | | |
| 5-Year Completion | | | | | | | | | | |
| Post-Secondary Enrollment | | | | | | | | | | |
| Earning 9+ College Credits | | | | | | | | | | |

Disadvantaged is aggregate of disadvantaged student groups (details on pp. 2-4)

Gray shaded boxes are district-provided projections and goals

| Progression: Are students making sufficient progress toward college and career readiness? | | | | | | | | | | |
|--|-------------|----------------|-------------|----------------|--------------|----------------|------------------|----------------|-------------------------|----------------|
| | 2010-11 All | Dis-advantaged | 2011-12 All | Dis-advantaged | 2012-13 All* | Dis-advantaged | 2013-14 Goal All | Dis-advantaged | 4-Year Goal (2016-17)** | Dis-advantaged |
| Kinder Readiness Participation | | | | | | | | | | |
| 3rd Gr. Read. Proficiency | | | | | | | | | | |
| 5th Gr. Math Proficiency | | | | | | | | | | |
| 6th Gr. Chronic Absence | | | | | | | | | | |
| 8th Gr. Math Proficiency | | | | | | | | | | |
| 9th Grade Credits Earned | | | | | | | | | | |
| 9th Grade Chronic Absence | | | | | | | | | | |

*Estimate based on most recent available data **2017 goals are optional

| Equity: Are students succeeding across all buildings and populations? | | | | | | | | | | |
|--|---------|---------|---------|--------------|-------------------------|--|--|--|--|--|
| | 2010-11 | 2011-12 | 2012-13 | 2013-14 Goal | 4-Year Goal (2016-17)** | | | | | |
| Priority & Focus Buildings* | | | | | | | | | | |
| DISAGGREGATED DATA AND GOALS FOR EACH DISADVANTAGED STUDENT GROUP LISTED ON PP 2-4 | | | | | | | | | | |

*Prior to 2012-13, school in federal AYP "Need Improvement" status **4-year Goals are optional

| Local Priorities: What other measures reflect key priorities in the district? (optional, up to 3) | | | | | | | | | | |
|--|------|----------------|------|----------------|------|----------------|-------------|----------------|---------------|----------------|
| | Year | Dis-advantaged | Year | Dis-advantaged | Year | Dis-advantaged | 1-Year Goal | Dis-advantaged | 4-Year Goal** | Dis-advantaged |
| | | | | | | | | | | |
| | | | | | | | | | | |
| | | | | | | | | | | |

**4-year Goal optional

| Investment: What is the public investment in the district? (does not include capital investments) | | | | | | | | | | |
|--|---------|----------|----------|---|--|--|--|--|--|--|
| | 2011-12 | 2012-13* | 2013-14* | 2013-14 QEM calculation of District Share | | | | | | |
| Formula Revenue | | | | | | | | | | |
| Local Revenue not passed through formula | | | | | | | | | | |
| Federal Revenue | | | | | | | | | | |
| State Grants not passed through formula | | | | | | | | | | |

District Official

OEIB Chief Education Officer

NOTE: The gray fields for current and past data are optional, as are the tan fields for local priorities. Districts should fill in the blue fields with their targets, provided student counts are six or more.

Final K-12 / ESD Achievement Compact Template
April 4, 2012

| | | | | | | | | | |
|-----------------------------|--|--|--|--|--|--|--|--|--|
| 3rd Gr. Reading Proficiency | | | | | | | | | |
| 5th Gr. Math Proficiency | | | | | | | | | |
| 6th Grade Chronic Absence | | | | | | | | | |
| 8th Gr. Math Prof. | | | | | | | | | |
| 9th Grade Credits Earned | | | | | | | | | |
| 9th Grade Attendance | | | | | | | | | |

| 9th Graders of 2013-14 (Optional 4-Year Goals) | | | | | | | | | |
|--|----------------------------|----------------------------|----------------------------|--------------------------------|-----------------|---------------------------------|------------------|-----------------------------------|---------------------------------|
| | Economically Disadvantaged | Limited English Proficient | Students with Disabilities | Black (not of Hispanic origin) | Hispanic origin | American Indian / Alaska Native | Pacific Islander | Asian (not included in aggregate) | TAG (not included in aggregate) |
| 4-Year Graduation Rate | | | | | | | | | |
| 5-Year Completion Rate | | | | | | | | | |
| Earning 9+ College Credits | | | | | | | | | |
| Post-Secondary Enrollment | | | | | | | | | |
| 2015-16 results | | | | | | | | | |
| Kinder Readiness Participation | | | | | | | | | |
| 3rd Gr. Reading Proficiency | | | | | | | | | |
| 5th Gr. Math Proficiency | | | | | | | | | |
| 6th Grade Chronic Absence | | | | | | | | | |
| 8th Gr. Math Prof. | | | | | | | | | |
| 9th Grade Credits Earned | | | | | | | | | |
| 9th Grade Attendance | | | | | | | | | |

NOTE: The gray and tan fields are optional. Districts should fill in the blue fields with their targets, provided that the student counts are six or more.



Corvallis

SCHOOL DISTRICT

IV. SCHOOL CALENDARS: 2013-14 AND 2014-15

Corvallis School District 509J
Board of Directors

BOARD MEETING DATE: January 28, 2013

FOR INFORMATION

SUBJECT: 2013-14 and 2014-15 School Calendars

Issue:

The District needs to prepare a school calendar for the 2013-14 school year. To allow parents, staff and the community to be able to plan ahead with key calendar dates district staff will be proposing a two year calendar, 2013-14 and 2014-15.

A draft calendar was sent out to staff and parents requesting feedback about conference dates, staff development dates and preference of days for PLC time. We received feedback from 134 staff members and almost 300 parents. Based on the feedback received the district wants to spend some time researching different ways to offer conferences so kids are not out of school three days in a row and better ways to offer staff development so it occurs on a more regular basis. We also received feedback requesting that the district align all levels for PLC time, with the preferred day on Friday. District staff needs to research if we can make this happen with the schools' schedules and busing. Contractual obligations and required instructional time will also be taken into account when planning dates for conferences, staff development and PLC time.

However, even though district staff needs time to work on the some of the calendar dates, we will propose key dates so family, staff and community can plan ahead. The key dates are the first day of school, Thanksgiving, winter and spring breaks.

| | 2013-14 School Calendar | 2014-15 School Calendar |
|---------------------|--|--|
| First day of school | September 4, 2013 | September 3, 2014 |
| Thanksgiving break | November 27-29, 2013 | TBD |
| Winter break | December 23, 2013 – January 3, 2014 | December 22, 2014 – January 2, 2015 |
| Spring break | March 24-28, 2014 | March 23-27, 2015 |
| Last day of school | Likely to be week of June 9th | Likely to be week of June 8th |

Involvement:

Assistant Superintendent Kevin Bogatin and Human Resources Director Jennifer Duvall have gathered feedback from principals, staff and parents. Information will be gathered from the transportation company and from other agency partners about after school opportunities for elementary and middle school students for early release.

Recommendation:

Staff recommends that the Board adopt the proposed key dates for the 2013-14 and 2014-15 school calendar proposal at a future meeting.

CONTACT PERSON: Jennifer Duvall

Corvallis School District School Calendar

2013-2014

Only Key Dates Noted

DRAFT

JULY 2013

| S | M | T | W | T | F | S |
|----|----|----|----|----|----|----|
| | 1 | 2 | 3 | 4 | 5 | 6 |
| 7 | 8 | 9 | 10 | 11 | 12 | 13 |
| 14 | 15 | 16 | 17 | 18 | 19 | 20 |
| 21 | 22 | 23 | 24 | 25 | 26 | 27 |
| 28 | 29 | 30 | 31 | | | |

AUGUST 2013

| S | M | T | W | T | F | S |
|----|----|----|----|----|----|----|
| | | | | 1 | 2 | 3 |
| 4 | 5 | 6 | 7 | 8 | 9 | 10 |
| 11 | 12 | 13 | 14 | 15 | 16 | 17 |
| 18 | 19 | 20 | 21 | 22 | 23 | 24 |
| 25 | 26 | 27 | 28 | 29 | 30 | 31 |

SEPTEMBER 2013

| S | M | T | W | T | F | S |
|----|----|----|----|----|----|----|
| 1 | H | P | F | 5 | 6 | 7 |
| 8 | 9 | 10 | 11 | 12 | 13 | 14 |
| 15 | 16 | 17 | 18 | 19 | 20 | 21 |
| 22 | 23 | 24 | 25 | 26 | 27 | 28 |
| 29 | 30 | | | | | |

OCTOBER 2013

| S | M | T | W | T | F | S |
|----|----|----|----|----|----|----|
| | | 1 | 2 | 3 | 4 | 5 |
| 6 | 7 | 8 | 9 | 10 | D | 12 |
| 13 | 14 | 15 | 16 | 17 | 18 | 19 |
| 20 | 21 | 22 | 23 | 24 | 25 | 26 |
| 27 | 28 | 29 | 30 | 31 | | |

NOVEMBER 2013

| S | M | T | W | T | F | S |
|----|----|----|----|----|----|----|
| | | | | | 1 | 2 |
| 3 | 4 | 5 | 6 | 7 | 8 | 9 |
| 10 | H | 12 | 13 | 14 | 15 | 16 |
| 17 | 18 | 19 | 20 | 21 | 22 | 23 |
| 24 | 25 | 26 | N | H | N | 30 |

DECEMBER 2013

| S | M | T | W | T | F | S |
|----|----|----|----|----|----|----|
| 1 | 2 | 3 | 4 | 5 | 6 | 7 |
| 8 | 9 | 10 | 11 | 12 | 13 | 14 |
| 15 | 16 | 17 | 18 | 19 | 20 | 21 |
| 22 | N | N | N | N | N | 28 |
| 29 | N | N | | | | |

JANUARY 2014

| S | M | T | W | T | F | S |
|----|----|----|----|----|----|----|
| | | | H | N | N | 4 |
| 5 | 6 | 7 | 8 | 9 | 10 | 11 |
| 12 | 13 | 14 | 15 | 16 | 17 | 18 |
| 19 | N | 21 | 22 | 23 | 24 | 25 |
| 26 | 27 | 28 | 29 | 30 | 31 | |

FEBRUARY 2014

| S | M | T | W | T | F | S |
|----|-----|----|----|----|----|----|
| | | | | | | 1 |
| 2 | 3 | 4 | 5 | 6 | 7 | 8 |
| 9 | 10 | 11 | 12 | 13 | 14 | 15 |
| 16 | N/M | 18 | 19 | 20 | 21 | 22 |
| 23 | 24 | 25 | 26 | 27 | 28 | |

MARCH 2014

| S | M | T | W | T | F | S |
|----|----|----|----|----|----|----|
| | | | | | | 1 |
| 2 | 3 | 4 | 5 | 6 | 7 | 8 |
| 9 | 10 | 11 | 12 | 13 | 14 | 15 |
| 16 | 17 | 18 | 19 | 20 | 21 | 22 |
| 23 | N | N | N | N | N | 29 |
| 30 | 31 | | | | | |

APRIL 2014

| S | M | T | W | T | F | S |
|----|----|----|----|----|----|----|
| | | 1 | 2 | 3 | 4 | 5 |
| 6 | 7 | 8 | 9 | 10 | 11 | 12 |
| 13 | 14 | 15 | 16 | 17 | 18 | 19 |
| 20 | 21 | 22 | 23 | 24 | 25 | 26 |
| 27 | 28 | 29 | 30 | | | |

MAY 2014

| S | M | T | W | T | F | S |
|----|----|----|----|----|----|----|
| | | | | 1 | 2 | 3 |
| 4 | 5 | 6 | 7 | 8 | 9 | 10 |
| 11 | 12 | 13 | 14 | 15 | 16 | 17 |
| 18 | 19 | 20 | 21 | 22 | 23 | 24 |
| 25 | H | 27 | 28 | 29 | 30 | 31 |

JUNE 2014

| S | M | T | W | T | F | S |
|----|----|----|----|----|----|----|
| 1 | 2 | 3 | 4 | 5 | 6 | 7 |
| 8 | 9 | 10 | 11 | 12 | 13 | 14 |
| 15 | 16 | 17 | 18 | 19 | 20 | 21 |
| 22 | 23 | 24 | 25 | 26 | 27 | 28 |
| 29 | 30 | | | | | |

KEY

- H/N No School: Non Contract or Holiday
- D No School: Professional Development
- P No School: Teacher Prep

First day of school - September 4

Corvallis School District School Calendar

2014-2015

Only Key Dates Noted

DRAFT

JULY 2014

| S | M | T | W | T | F | S |
|----|----|----|----|----|----|----|
| | | 1 | 2 | 3 | 4 | 5 |
| 6 | 7 | 8 | 9 | 10 | 11 | 12 |
| 13 | 14 | 15 | 16 | 17 | 18 | 19 |
| 20 | 21 | 22 | 23 | 24 | 25 | 26 |
| 27 | 28 | 29 | 30 | 31 | | |

AUGUST 2014

| S | M | T | W | T | F | S |
|----|----|----|----|----|----|----|
| | | | | | 1 | 2 |
| 3 | 4 | 5 | 6 | 7 | 8 | 9 |
| 10 | 11 | 12 | 13 | 14 | 15 | 16 |
| 17 | 18 | 19 | 20 | 21 | 22 | 23 |
| 24 | 25 | 26 | 27 | 28 | 29 | 30 |
| 31 | | | | | | |

SEPTEMBER 2014

| S | M | T | W | T | F | S |
|----|----|----|----|----|----|----|
| | H | P | 3 | 4 | 5 | 6 |
| 7 | 8 | 9 | 10 | 11 | 12 | 13 |
| 14 | 15 | 16 | 17 | 18 | 19 | 20 |
| 21 | 22 | 23 | 24 | 25 | 26 | 27 |
| 28 | 29 | 30 | | | | |

OCTOBER 2014

| S | M | T | W | T | F | S |
|----|----|----|----|----|----|----|
| | | | 1 | 2 | 3 | 4 |
| 5 | 6 | 7 | 8 | 9 | 10 | 11 |
| 12 | 13 | 14 | 15 | 16 | 17 | 18 |
| 19 | 20 | 21 | 22 | 23 | 24 | 25 |
| 26 | 27 | 28 | 29 | 30 | 31 | |

NOVEMBER 2014

| S | M | T | W | T | F | S |
|----|----|----|----|----|----|----|
| | | | | | | 1 |
| 2 | 3 | 4 | 5 | 6 | 7 | 8 |
| 9 | 10 | H | 12 | 13 | 14 | 15 |
| 16 | 17 | 18 | 19 | 20 | 21 | 22 |
| 23 | 24 | 25 | 26 | H | N | 29 |
| 30 | | | | | | |

DECEMBER 2014

| S | M | T | W | T | F | S |
|----|----|----|----|----|----|----|
| | 1 | 2 | 3 | 4 | 5 | 6 |
| 7 | 8 | 9 | 10 | 11 | 12 | 13 |
| 14 | 15 | 16 | 17 | 18 | 19 | 20 |
| 21 | N | N | N | N | N | 27 |
| 28 | N | N | N | | | |

JANUARY 2015

| S | M | T | W | T | F | S |
|----|----|----|----|----|----|----|
| | | | | | H | N |
| 4 | 5 | 6 | 7 | 8 | 9 | 10 |
| 11 | 12 | 13 | 14 | 15 | 16 | 17 |
| 18 | N | 20 | 21 | 22 | 23 | 24 |
| 25 | 26 | 27 | 28 | 29 | 30 | 31 |

FEBRUARY 2015

| S | M | T | W | T | F | S |
|----|----|----|----|----|----|----|
| 1 | 2 | 3 | 4 | 5 | 6 | 7 |
| 8 | 9 | 10 | 11 | 12 | 13 | 14 |
| 15 | 16 | 17 | 18 | 19 | 20 | 21 |
| 22 | 23 | 24 | 25 | 26 | 27 | 28 |

MARCH 2015

| S | M | T | W | T | F | S |
|----|----|----|----|----|----|----|
| 1 | 2 | 3 | 4 | 5 | 6 | 7 |
| 8 | 9 | 10 | 11 | 12 | 13 | 14 |
| 15 | 16 | 17 | 18 | 19 | 20 | 21 |
| 22 | N | N | N | N | N | 28 |
| 29 | 30 | 31 | | | | |

APRIL 2015

| S | M | T | W | T | F | S |
|----|----|----|----|----|----|----|
| | | | 1 | 2 | 3 | 4 |
| 5 | 6 | 7 | 8 | 9 | 10 | 11 |
| 12 | 13 | 14 | 15 | 16 | 17 | 18 |
| 19 | 20 | 21 | 22 | 23 | 24 | 25 |
| 26 | 27 | 28 | 29 | 30 | | |

MAY 2015

| S | M | T | W | T | F | S |
|----|----|----|----|----|----|----|
| | | | | | 1 | 2 |
| 3 | 4 | 5 | 6 | 7 | 8 | 9 |
| 10 | 11 | 12 | 13 | 14 | 15 | 16 |
| 17 | 18 | 19 | 20 | 21 | 22 | 23 |
| 24 | H | 26 | 27 | 28 | 29 | 30 |
| 31 | | | | | | |

JUNE 2015

| S | M | T | W | T | F | S |
|----|----|----|----|----|----|----|
| | 1 | 2 | 3 | 4 | 5 | 6 |
| 7 | 8 | 9 | 10 | 11 | 12 | 13 |
| 14 | 15 | 16 | 17 | 18 | 19 | 20 |
| 21 | 22 | 23 | 24 | 25 | 26 | 27 |
| 28 | 29 | 30 | | | | |

KEY

- H/N No School: Non Contract or Holiday
- D No School: Professional Development
- P No School: Teacher Prep

First day of school - September 3



Corvallis

SCHOOL DISTRICT

- V. EXECUTIVE SESSION - The Board will meet in Executive session at 5:15 p.m. under ORS 192.660(2)(d) - To consult with persons designated for labor negotiations.
- VI. ADJOURNMENT

*All times are approximate.

Note: The Chair of the Board may alter the order of business as they deem proper and necessary.



Corvallis

SCHOOL DISTRICT

Agendas – Agendas and supporting materials are available online at <https://v3.boardbook.org/Public/PublicHome.aspx?ak=1000829> a few days before each School Board meeting. For more information, please contact Kim Nelson at kimberly.nelson@corvallis.k12.or.us.

Communication With The School Board – Communication with the Board can be made by telephone, letter, e-mail and public testimony. Letters may be addressed to individual Board members or the Board as a whole and sent to 1555 SW 35th Street, Corvallis, OR 97333. E-mail may be sent to schoolboard@corvallis.k12.or.us and will be sent to all board members simultaneously as well as to key District Office staff. For more information, please contact Kim Nelson at kimberly.nelson@corvallis.k12.or.us.

Consolidated Action Agenda – The purpose of the consolidated action agenda is to expedite action on routine agenda items. All agenda items that are not held for discussion at the request of a Board member or staff member will be approved/accepted as written as part of the consolidated motion. Items designated or held for discussion will be acted upon individually.

Public Comment –

Guidelines are at: <https://www.csd509j.net/about-us/school-board/provide-input-and-be-informed/>

Executive Session – Permissible purposes of Executive Sessions include: ORS 192.660(2)(a) – Employment of Public Officers, Employees and Agents; ORS 192.660(2)(b) – Discipline of Public Officers and Employees; ORS 192.660(2)(d) – Labor Negotiator Consultations; ORS 192.660(2)(e) – Real Property Transactions; ORS 192.660(2)(f) – Exempt Public Records; ORS 192.660(2)(h) – Legal Counsel; ORS 192.660(2)(i) – Performance Evaluations of Public Officers and Employees; ORS 192.660(2)(j) – Public Investments.

Grievance Process - ORS 192.705

Grievances alleging a violation by a governing body of provisions in Public Meetings Law may be submitted in writing to Kim Nelson at kim.nelson@corvallis.k12.or.us or submitted between 8:00 am – 5:00 pm Monday through Friday at 1555 SW 35th Street, Corvallis, OR 97333. Additional information is available on the district website.

| SCHOOL BOARD MEMBERS | | | |
|-----------------------------|--------------|-------------------------------|--------------|
| Judah Largent | 541-231-8415 | Terese Jones, Co-Vice Chair | 541-230-1673 |
| Sami Al-Abdrabbuh | 541-283-6611 | Shauna Tominey, Co-Vice Chair | 541-829-8411 |
| Chris Hawkins | 541-602-2045 | Luhui Whitebear, Chair | 541-714.3305 |
| Bernie Wang | 541-704-7298 | | |

| EXECUTIVE STAFF MEMBERS | |
|--|--------------|
| Ryan Noss, Superintendent | 541-757-5841 |
| Melissa Harder, Assistant Superintendent / Human Resources Director | 541-766-4857 |
| Lauren Wolfe, Finance Director | 541-757-5874 |
| Byron Bethards, Student Growth & Experience Director | 541-757-5470 |
| Kim Patten, Operations Director | 541-757-3849 |
| Kim Nelson, Executive Assistant to the Superintendent; Board Secretary | 541-757-5841 |