

**Personnel Committee Meeting**  
Wednesday, April 11, 2012 12:00 PM

Board Room or Don's Office  
1519 10th St  
Gering, NE 69341



## **Minutes**

1. **Attendance**

Also in attendance were Don Hague and Tim Meisner.

2. **Activities Director**

Activities Director Dave Pauli spoke to the committee about coaching positions and upcoming challenges.

3. **Organizational Chart**

The organizational chart and position placement was reviewed.

4. **Old Business**

4.1. Evaluation Update

The evaluation process and schedule for teachers was reviewed. Board Policy 406.08 will be examined at the next Policy Review Committee meeting. Updates will be made and inserted into the Teacher Certification Model. The policy will then be updated on the district website. Frahm will insert a "Phase Key" into the evaluation spreadsheet for schedule clarification. The evaluation plan will become a regulation behind the policy. District Attorney Greg Perry provided Superintendent Hague with rationale regarding the proposed policy for random drug testing on volunteer coaches and sponsors. Pre-employment and annual testing were also discussed, as were budget concerns, associated costs and scheduling.

4.2. Superintendent Search

4.2.i. Nebraska School Board Association

NSBA will present their Superintendent Search services at 5:30pm during a special work session in July.

4.2.ii. McPherson & Jacobson LLC

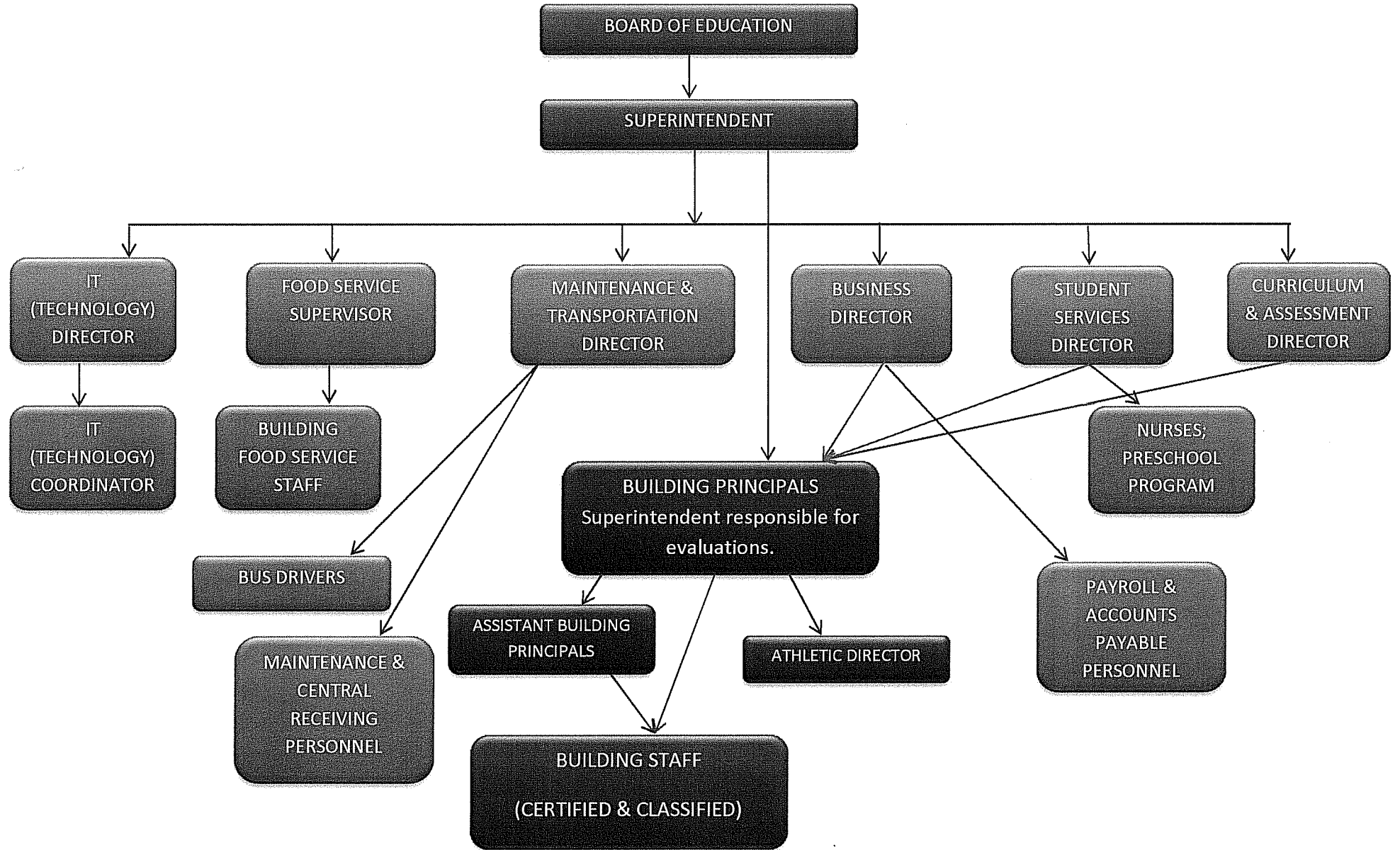
McPherson & Jacobson will present their Superintendent Search services at 6:00pm at a special work session in July.

4.3. Status Update on Personnel Committee Goals

5. **Adjournment**

# DISTRICT/PROGRAM ORGANIZATIONAL CHART

GERING PUBLIC SCHOOLS



Blue Arrows: Evaluation & Supervision  
 Orange Arrows: Program Supervision Only

Revised: August, 2011

**DON HAGUE - SUPERINTENDENT**

**Administrators**

NAME	BLDG	EVALUATOR	POSITION	8-WEEK EVAL	ANNUAL EVAL
Barker, Pam	NFLD	HAGUE	Principal		Jan-12
Haun, Mary Kay	GEIL	HAGUE	Principal		Jan-12
Hubbard, Candy	CO	HAGUE	Dir. Spec. Serv.		Feb-12
Hubbard, Eldon	HS	HAGUE	Principal		Mar-12
Martin, Terri	CO	HAGUE	Curriculum Dir.	1/4/11	Feb-12
Oliveres, Dora	JH	HAGUE	Principal		Mar-12
Schlothauer, George	LINC	HAGUE	Principal		Jan-12
Smith, Betty	CC	HAGUE	Principal		Jan-12

**DIRECTORS/CLASSIFIED STAFF**

NAME	BLDG	EVALUATOR	POSITION	8-WEEK EVAL	ANNUAL EVAL
Coop, Diane	SH	HAGUE	Food Service Dir.		Dec-11
Hamer, Russ	TECH/SH	HAGUE	Tech Cord		Dec-12
Hanson, Curt	CO	HAGUE	Transp/Maint		Oct -11 Dec-11 Feb-12
Leeling, Tammy	CO	HAGUE	Receptionist		Nov-11
Meisner, Tim	CO	HAGUE	Business Manager		Feb-12
Newberry, Lionel	CO	HAGUE	Tech Director		Dec-12
Frahm, Lisa	CO	HAGUE	Adm. Assist.		Nov-11
Tripple, Mary Ann	CO	HAGUE	Personnel Sec.		Nov-11

**CANDY HUBBARD - Director of Student Services**

**CERTIFIED - PROBATIONARY**

NAME	BLDG	EVALUATOR	POSITION	PROBATIONARY		PHASE I			PHASE II
Cochran, Julie	PRSCHL	SCHLOTHAUER	Director/	XX					
			Social Worker	1st Formal Obs		Summative Rpt		Summative Rpt	
				2nd Formal Obs					
				Summative Rpt					

Cook, Michelle	JH	C HUBBARD	Alternative Teacher	XX					
				1st Formal Obs		Summative Rpt		Summative Rpt	
				2nd Formal Obs					
				Summative Rpt					

Longmore, Amy		C HUBBARD	Speech Comm Spec	XX					
				1st Formal Obs		Summative Rpt		Summative Rpt	
				2nd Formal Obs					
				Summative Rpt					

Patterson, Megan		C HUBBARD		XX					
				1st Formal Obs		Summative Rpt		Summative Rpt	
				2nd Formal Obs					
				Summative Rpt					

Schaaf, Sarah		C HUBBARD		XX					
				1st Formal Obs		Summative Rpt		Summative Rpt	
				2nd Formal Obs					
				Summative Rpt					

**PHASE I**

NAME	BLDG	EVALUATOR	POSITION	PROBATIONARY		PHASE I		PHA
Bauer, Janet	PRSCHL	SCHLOTHAUER	Teacher			XX		
				1st Formal Obs		Summative Rpt		Summative Rpt
				2nd Formal Obs				
				Summative Rpt				

Fahrenbrook, Tina	G,L,N,JH, HS	C HUBBARD	Speech Path			XX		
				1st Formal Obs		Summative Rpt		Summative Rpt
				2nd Formal Obs				
				Summative Rpt				

XX Indicates the Phase

**PHASE I (cont'd)**

NAME	BLDG	EVALUATOR	POSITION	PROBATIONARY		PHASE I		PHASE I
Lutz, Sandy	ALL SCHLS	C HUBBARD	OT			XX		
				1st Formal Obs		Summative Rpt		Summative Rpt
				2nd Formal Obs				
				Summative Rpt				

Stone, Brenda	N/L/G/PRE	C HUBBARD	Psychologist			XX		
				1st Formal Obs		Summative Rpt		Summative Rpt
				2nd Formal Obs				
				Summative Rpt				

**PHASE III**

NAME	BLDG	EVALUATOR	POSITION	PROBATIONARY		PHASE I		PHASE I
Bowers, Devonna	PRSCHL	SCHLOTHAUER	Teacher					
				1st Formal Obs		Summative Rpt		Summative Rpt
				2nd Formal Obs				
				Summative Rpt				

Jenkins, Natalie	N,G,L,CC	HAUN	HAL					
				1st Formal Obs		Summative Rpt		Summative Rpt
				2nd Formal Obs				
				Summative Rpt				

**XX** Indicates the Phase

**CLASSIFIED**

NAME	BLDG	EVALUATOR	POSITION	8-WEEK EVAL	ANNUAL EVAL
Camden, Julie	TCAP	HUBBARD/COOK	Alternative Aide		
Nation, Pam	CO	C HUBBARD	SS Admin. Assist.		
Reinmuth, Justin	TCAP	HUBBARD/COOK	Alternative Aide	2/2/2011	

Tim Meisner - Business Manager

NAME	BLDG	EVALUATOR	POSITION	8-WEEK EVAL	ANNUAL EVAL
Fererra, David	CO	MEISNER	Bkkpr/Payroll		
Wilson, Michelle	CO	MEISNER	Bookkeeper/AP		1/23/12

**CURT HANSON - Transportation Director**

NAME	BLDG	EVALUATOR	POSITION	8-WEEK EVAL	ANNUAL EVAL
Beeman, John	TRANS	C. HANSON	Bus Driver (3)		
Bohl, Jim	TRANS	C. HANSON	Bus Driver		
Brown, Lisa	TRANS	C. HANSON	Bus Driver (8)		
Flowers, Edee	TRANS	C. HANSON	Bus Driver (3)		
Kaus, Janet	TRANS	C. HANSON	Bus Driver (7)		
Kissler, Carole	TRANS	C. HANSON	Bus Driver (6)		
Kissler, C. (Sonny)	TRANS	C. HANSON	Bus Driver (sub)		
Russell, Anita	TRANS	C. HANSON	Bus Driver		
St. John, Ed (Joe)	TRANS	C. HANSON	Bus Driver		
Zitterkoph, Larry	TRANS	C. HANSON	Bus Driver		

**CURT HANSON - Transportation Director**

NAME	BLDG	EVALUATOR	POSITION	8-WEEK EVAL	ANNUAL EVAL
Duque Jr., Jesus	MAINT	C. HANSON	Maint Tech		
Duque Sr., Jesus	MAINT	C. HANSON	Maint Tech		
Kaus, Harold	MAINT	C. HANSON	Maint Tech		
Sabala, Robert	MAINT	C. HANSON	Maint Tech		

**DIANE COOP - Director of Food Services**

NAME	BLDG	EVALUATOR	POSITION	8-WEEK EVAL	ANNUAL EVAL	Hire Date
Alkire, Peggy	SH	COOP	Food Service		4/29/11	
Burbach, Jeannetta	SH	COOP	Food Service		5/18/11	
Buxbaum, Shirley	CC	COOP	Food Service		5/4/11	
Enlow, Carla	LINC	COOP	Food Service		4/14/11	
Fisher, Sallie	SH	COOP	Food Service		4/19/11	
Flores, Tammy	JH	COOP	Food Service			

Fritschie, Beth	GEIL	COOP	Food Service		5/4/11	
Gibbons, Susan	SH	COOP	Food Service		out	
Kaufman, Pat	JH	COOP	Food Service		retired	
Marcus, Susan	SH	COOP	Asst. Baker	11/11/2011		8/18/11
McDavid, Melinda	SH/LINC	COOP	Food Service		4/14/11	
Parrish, Alice	JH	COOP	Food Service		4/27/11	
Rodriguez, Gloria	SH	COOP	Food Service		retired	
Rowe, Karla	NFLD	COOP	Food Service		5/20/11	
Schoeneman, Pam	JH	COOP	Asst. Cook	11/11/2011		8/16/11
Schroeder, Lois	GEIL	COOP	Food Service		5/4/11	
Smallfoot, Bonnie	SH	COOP	Food Service			
St. Pierre, Sheri	JH	COOP	Food Service		out	
York, Andrea	SH	COOP	Baker	11/11/2011		8/16/11

**JULIE COCHRAN - Preschool Coordinator**

NAME	BLDG	EVALUATOR	POSITION	8-WEEK EVAL	ANNUAL EVAL
Corona, Rebecca	PRESCHL	SCHLOTHAUER	Aide Preschool		5/13/11
Carillo, Barbara	PRESCHL	SCHLOTHAUER	Aide Preschool		5/18/11
Kinnaman, Jill	PRESCHL	SCHLOTHAUER	Aide Preschool		
McDowell, Paula	PRESCHL	SCHLOTHAUER	Aide Preschool		5/18/11
Neuwirth, Laura B.	PRESCHL	SCHLOTHAUER	Aide Preschool		5/18/11
Sabala, Tiffany	PRESCHL	SCHLOTHAUER	Aide Preschool		5/18/11

**GEIL ELEMENTARY**

**MARY KAY HAUN - Principal**

**CERTIFIED - PROBATIONARY**

NAME	BLDG	EVALUATOR	POSITION	PROBATIONARY	PHASE I	PHASE I	PHASE I	PHASE I	PHASE I
Johnson, Brandy	GEIL	HAUN	2nd Teacher	XX					
				1st Formal Obs		Summative Rpt		Summative Rpt	
				2nd Formal Obs					
				Summative Rpt					
hired 8/11/2010									
				XX					



Schadwinkel, Craig	GEIL	HAUN	PE Teacher	1st Formal Obs		Summative Rpt		Summative Rpt
hired 8/25/1980				2nd Formal Obs				
				Summative Rpt				

Svoboda, Troy	GEIL	HAUN	3rd Teacher	1st Formal Obs		XX		Summative Rpt
hired 9/26/1988				2nd Formal Obs				
				Summative Rpt				

Toffelmire, Kelly	GEIL	HAUN	Computer Lab Coord	1st Formal Obs		XX		Summative Rpt
hired 8/13/2008				2nd Formal Obs				
				Summative Rpt				

**PHASE II - GEIL**

NAME	BLDG	EVALUATOR	POSITION	PROBATIONARY		PHASE I		PHA
Baxter, Kathy	GEIL	HAUN	Resource Teacher	1st Formal Obs				XX
hired 8/14/2007				2nd Formal Obs				
				Summative Rpt				

Beam, Jadie	GEIL	HAUN	Instr. Coach	1st Formal Obs				XX
hired 8/25/1997				2nd Formal Obs				
				Summative Rpt				

Bogus, Peg	GEIL	HAUN	Teacher - 4th	1st Formal Obs				XX
hired 8/25/1999				2nd Formal Obs				
				Summative Rpt				

Bohnsack, Jennifer	GEIL	HAUN	Kinder Teacher	1st Formal Obs				XX

hired 8/21/2000				2nd Formal Obs					
				Summative Rpt					

Peters, Alynn	GEIL	HAUN	Teacher - 2nd						XX
hired 8/19/2002				1st Formal Obs		Summative Rpt			Summative Rpt
				2nd Formal Obs					
				Summative Rpt					

Rimington, Lisa	GEIL	HAUN	6th Teacher						XX
hired 8/174/07				1st Formal Obs		Summative Rpt			Summative Rpt
				2nd Formal Obs					
				Summative Rpt					

Soule, Dail	GEIL	HAUN	5th Teacher						XX
hired 8/15/2007				1st Formal Obs		Summative Rpt			Summative Rpt
				2nd Formal Obs					
				Summative Rpt					

**PHASE III - GEIL**

NAME	BLDG	EVALUATOR	POSITION	PROBATIONARY		PHASE I		PHA
Becker, Kim	GEIL	HAUN	Social Worker					
hired 11/1/1991				1st Formal Obs		Summative Rpt		Summative Rpt
				2nd Formal Obs				
				Summative Rpt				

Berry, Reenie	GEIL	HAUN	Resource Teacher					
hired 8/28/1972				1st Formal Obs		Summative Rpt		Summative Rpt
				2nd Formal Obs				
				Summative Rpt				

Duncan, Sandy	GEIL	HAUN	1st Teacher					
hired 8/19/2002				1st Formal Obs		Summative Rpt		Summative Rpt
				2nd Formal Obs				

Summative Rpt				
---------------	--	--	--	--

Foster, Claire	GEIL	HAUN	Kinder Teacher						
hired 8/19/2002				1st Formal Obs		Summative Rpt			Summative Rpt
				2nd Formal Obs					
				Summative Rpt					

Hulbert, Susan	GEIL	HAUN	4th Teacher						
hired 8/21/1991				1st Formal Obs		Summative Rpt			Summative Rpt
				2nd Formal Obs					
				Summative Rpt					

Keller, Kathy	GEIL	HAUN	3rd Teacher						
hired 8/23/1982				1st Formal Obs		Summative Rpt			Summative Rpt
				2nd Formal Obs					
				Summative Rpt					

Maser, Beth	GEIL	HAUN	3rd Teacher						
hired 8/19/2002				1st Formal Obs		Summative Rpt			Summative Rpt
				2nd Formal Obs					
				Summative Rpt					

Millay, Peggy	GEIL	HAUN	Title I Teacher						
hired 8/14/2007				1st Formal Obs		Summative Rpt			Summative Rpt
				2nd Formal Obs					
				Summative Rpt					

Propp, Kathy	GEIL	HAUN	Vocal Music						
hired 8/19/2002				1st Formal Obs		Summative Rpt			Summative Rpt
				2nd Formal Obs					
				Summative Rpt					

GEIL - CLASSIFIED

NAME	BLDG	EVALUATOR	POSITION	8-WEEK EVAL	ANNUAL EVAL	HIRE DATE
Ashing, Erron	GEIL	Haun		X	2/9/12	
Becker, Kristi	GEIL	HAUN	Instructional Para		X	8/12/10
Brunner, Pam	GEIL	HAUN	Comp Sci Para		2/9/12	3/3/95
Christian, Greg	GEIL	HAUN	Custodian	?		4/7/11
Custer, Chelsea	GEIL	HAUN	Spec. Educ. Para		X	8/18/08
Gingrich, Kathleen	GEIL	HAUN	Media Para		2/9/12	8/25/88
Gregory, Kristie	GEIL	HAUN	Instructional Para		2/9/12	9/8/08
Holliday, Kathy	GEIL	HAUN	Instructional Para		X	1/5/06
Hunzeker, Diane	GEIL	HAUN	Instructional Para		2/9/12	9/21/09
Locker, Gwen	GEIL	HAUN/OLIVARES	School Nurse		2/9/12	11/8/04
Lyons, Laura	GEIL	HAUN	Instructional Para		2/9/12	8/18/08
Marsh, Jill	GEIL	HAUN	Instructional Para		2/9/12	12/14/06
Mendoza, Jane	GEIL	HAUN	Instructional Para		X	9/11/89
Pfortmiller, Vicki	GEIL	HAUN	Instructional Para		2/9/12	8/18/09
Ryan, Stephanie	GEIL	H		X	2/9/12	
Sabala, Martha	GEIL	HAUN	Instructional Para	X	2/9/12	8/16/11
Schild, Roberta	GEIL	HAUN	Resource Para		2/9/12	8/30/99
Straetker, Marjory	GEIL	HAUN	Instructional Para		2/9/12	8/23/02
Thacker, Tisha	GEIL	H			2/9/12	
Torres, Homero	GEIL	HAUN	Custodian		2/9/12	9/7/99
Walker, Jodie	GEIL	HAUN	Secretary	X	2/9/2012	8/30/1999
Ybara, Ernie	GEIL	Haun	Custodian	X	2/9/2012	

**LINCOLN ELEMENTARY**

**GEORGE SCHLOTHAUER - Principal**

**CERTIFIED - PROBATIONARY**

NAME	BLDG	EVALUATOR	POSITION	PROBATIONARY		PHASE I		PHA	
Bader, Holly	LINC	SCHLOTHAUER	Teacher - 1st	XX					
				1st Formal Obs		Summative Rpt			Summative Rpt
				2nd Formal Obs					
				Summative Rpt					

Holmes, Emily	LINC	SCHLOTHAUER	Teacher - K	XX					
				1st Formal Obs		Summative Rpt			Summative Rpt
				2nd Formal Obs					
				Summative Rpt					

Rounds, Amanda	LINC	SCHLOTHAUER	Special Ed	XX					
				1st Formal Obs		Summative Rpt			Summative Rpt
				2nd Formal Obs					
				Summative Rpt					

**PHASE I - LINCOLN**

NAME	BLDG	EVALUATOR	POSITION	PROBATIONARY		PHASE I		PHA	
Barker, Caleigh	LINC	SCHLOTHAUER	Teacher - 1st			XX			
				1st Formal Obs		Summative Rpt			Summative Rpt
				2nd Formal Obs					
				Summative Rpt					

Martin, Jack	LINC	SCHLOTHAUER	Teacher - PE			XX			
				1st Formal Obs		Summative Rpt			Summative Rpt
				2nd Formal Obs					
				Summative Rpt					

Roth, Ronda	LINC	SCHLOTHAUER	Teacher -Resource			XX			
				1st Formal Obs		Summative Rpt			Summative Rpt
				2nd Formal Obs					
				Summative Rpt					

						XX		
--	--	--	--	--	--	----	--	--

Schild, Deb	LINC	SCHLOTHAUER	Teacher - 1st	1st Formal Obs	Summative Rpt			Summative Rpt
				2nd Formal Obs				
				Summative Rpt				

**PHASE II - LINCOLN**

Bailey, Terry	LINC	SCHLOTHAUER	Teacher - 5th		Summative Rpt			XX
				1st Formal Obs				
				2nd Formal Obs				
				Summative Rpt				

Brester, Angie	LINC	SCHLOTHAUER	Teacher - 3rd		Summative Rpt			XX
				1st Formal Obs				
				2nd Formal Obs				
				Summative Rpt				

Cardwell, Kim	LINC	SCHLOTHAUER	Teacher - 4th		Summative Rpt			XX
				1st Formal Obs				
				2nd Formal Obs				
				Summative Rpt				

Green, Keaton	LINC	SCHLOTHAUER	Teacher - 5th		Summative Rpt			XX
				1st Formal Obs				
				2nd Formal Obs				
				Summative Rpt				

Hague, Bev	LINC	SCHLOTHAUER	Reading Coach		Summative Rpt			XX
				1st Formal Obs				
				2nd Formal Obs				
				Summative Rpt				

Mendoza, Mary Jo	LINC	SCHLOTHAUER	Counselor		Summative Rpt			XX
				1st Formal Obs				
				2nd Formal Obs				
				Summative Rpt				

Mitchell, Cindy	LINC	SCHLOTHAUER	Teacher - K						XX
				1st Formal Obs		Summative Rpt		Summative Rpt	
				2nd Formal Obs					
				Summative Rpt					

Steele, Tracy	LINC	SCHLOTHAUER	Teacher - 4th						XX
				1st Formal Obs		Summative Rpt		Summative Rpt	
				2nd Formal Obs					
				Summative Rpt					

Tofflemire, Leigh Ann	LINC	SCHLOTHAUER	Teacher - Music						XX
				1st Formal Obs		Summative Rpt		Summative Rpt	
				2nd Formal Obs					
				Summative Rpt					

**PHASE III - LINCOLN**

NAME	BLDG	EVALUATOR	POSITION	PROBATIONARY	PHASE I	PHA		
Becking, Farrell	LINC	SCHLOTHAUER	Teacher - 6th					
				1st Formal Obs		Summative Rpt		Summative Rpt
				2nd Formal Obs				
				Summative Rpt				

Kocer, Lynne	LINC	SCHLOTHAUER	Teacher - 2nd					
				1st Formal Obs		Summative Rpt		Summative Rpt
				2nd Formal Obs				
				Summative Rpt				

Lyles, Judi	LINC	SCHLOTHAUER	Teacher - 6th					
				1st Formal Obs		Summative Rpt		Summative Rpt
				2nd Formal Obs				
				Summative Rpt				

--	--	--	--	--	--	--

Sample, Jeanne	LINC	SCHLOTHAUER	Reading Coord.	1st Formal Obs	Summative Rpt		Summative Rpt	
				2nd Formal Obs				
				Summative Rpt				

Stark, Michele	LINC	SCHLOTHAUER	Teacher - 3rd	1st Formal Obs	Summative Rpt		Summative Rpt	
				2nd Formal Obs				
				Summative Rpt				

**LINCOLN - CLASSIFIED**

NAME	BLDG	EVALUATOR	POSITION	8-WEEK EVAL	ANNUAL EVAL
Bustinza, Angela	LINC	G.S.	Instructional Aide		
Collins, Robin	LINC	G.S.	Instructional Aide		
Davis, Dorothy	LINC	G.S.	Instructional Aide		
Gatch, Kathy	LINC	G.S.	Special Ed Aide		
Harder, Barb	LINC	G.S.	Computer Para	10/19/11	
Jolliffe, Richard	LINC	G.S.	Instructional Aide		
Kanarick, Marci	LINC	G.S.	Secretary		
Larson, Darci	LINC	G.S.	Kindergarten Aide		
Leeper, Stephanie	LINC	G.S.	Media Para		
Moreno, Melissa	LINC	G.S.	Instructional Aide		
Muhr, LeRoy	LINC	G.S.	Custodian		
Smallfoot, Bonnie	LINC	G.S.	Custodian		
Suhr, Collette	LINC	G.S.	Instructional Aide		
Wendt, Kay	LINC	G.S.	Kindergarten Aide		

**NORTHFIELD ELEMENTARY**

**PAM BARKER - Principal**

**CERTIFIED - PROBATIONARY**

NAME	BLDG	EVALUATOR	POSITION	PROBATIONARY	PHASE I	PHASE II	
Gurrola, Eunice	NFLD	BARKER	3rd Teacher	XX	Summative Rpt		
				1st Formal Obs			12/02/11
				2nd Formal Obs			03/22/12
hired 8/12/2011							

				Summative Rpt					
--	--	--	--	---------------	--	--	--	--	--

Engel, Kelsey	NFLD	BARKER	2nd Teacher	XX							
				1st Formal Obs	12/2/11					Summative Rpt	Summative Rpt
				hired 8/12/2011						2nd Formal Obs	03/23/12
				Summative Rpt							

Kobza, Alisha	NFLD	BARKER	Learning Lab Teacher	XX							
				1st Formal Obs	1/4/12					Summative Rpt	Summative Rpt
				hired 8/17/2009						2nd Formal Obs	
				Summative Rpt							

Libsack, Jenna	NFLD	BARKER	1st Teacher	XX							
				1st Formal Obs	12/2/11					Summative Rpt	Summative Rpt
				hired 8/12/2011						2nd Formal Obs	03/23/12
				Summative Rpt							

Morales, Naomi	NFLD	BARKER	6th Teacher	XX							
				1st Formal Obs	12/19/11					Summative Rpt	Summative Rpt
				hired 8/17/2009						2nd Formal Obs	
				Summative Rpt							

Sherfey, Candice	NFLD	BARKER	Kinder Teacher	XX							
				1st Formal Obs	12/06/11					Summative Rpt	Summative Rpt
				hire date 8/11/2010						2nd Formal Obs	03/27/12
				Summative Rpt							

**PHASE I - NFLD**

NAME	BLDG	EVALUATOR	POSITION	PROBATIONARY		PHASE I		PHA		
Bates, Chad	NFLD	BARKER	5th Teacher							
				1st Formal Obs					Summative Rpt	Summative Rpt
				hired 8/13/2008					2nd Formal Obs	

Summative Rpt				
---------------	--	--	--	--

Cawiezell, Luanne hired 8/24/1989	NFLD	BARKER	6th Teacher			Summative Rpt	XX			Summative Rpt		
				1st Formal Obs								
				2nd Formal Obs								
				Summative Rpt								

Fulk, Christy hired 8/25/1999	NFLD	BARKER	K Teacher			Summative Rpt	XX			Summative Rpt		
				1st Formal Obs								
				2nd Formal Obs								
				Summative Rpt								

Janecek, Matt hired 8/25/1999	NFLD	BARKER	Counselor			Summative Rpt	XX			Summative Rpt		
				1st Formal Obs								
				2nd Formal Obs								
				Summative Rpt								

Janecek, Mickie hired 8/24/1998	NFLD	BARKER	K Teacher			Summative Rpt	XX			Summative Rpt		
				1st Formal Obs								
				2nd Formal Obs								
				Summative Rpt								

Kniss, Kathleen hired 8/22/1979	NFLD	BARKER	5th Teacher			Summative Rpt	XX			Summative Rpt		
				1st Formal Obs								
				2nd Formal Obs								
				Summative Rpt								

Michael, Becky hired 8/19/2003	NFLD	BARKER	Instruction Coach			Summative Rpt	XX			Summative Rpt		
				1st Formal Obs								
				2nd Formal Obs								
				Summative Rpt								

							XX			
--	--	--	--	--	--	--	----	--	--	--

Nochi, Sandi	NFLD	BARKER	6th Teacher	1st Formal Obs		Summative Rpt		Summative Rpt
hired 8/25/1999				2nd Formal Obs				
				Summative Rpt				

Pieper, Megan	NFLD	BARKER	1st Teacher	1st Formal Obs		XX		Summative Rpt
hired 8/13/2008				2nd Formal Obs				
				Summative Rpt				

**XX Indicates the Phase**  
**PHASE II - NFLD**

NAME	BLDG	EVALUATOR	POSITION	PROBATIONARY		PHASE I		PHA
Kelley, Katy	NFLD	BARKER	2nd Teacher	1st Formal Obs		Summative Rpt		XX
hired 8/23/1982				2nd Formal Obs				
				Summative Rpt				

Pszanka, Brenda	NFLD	BARKER	4th Teacher	1st Formal Obs		Summative Rpt		XX
hired 8/13/2008				2nd Formal Obs				
				Summative Rpt				

Propp, Carol	NFLD	BARKER	Title I Teacher	1st Formal Obs		Summative Rpt		XX
hired 8/15/2001				2nd Formal Obs				
				Summative Rpt				

Rose, Kathy	NFLD	BARKER	Teacher- Music	1st Formal Obs		Summative Rpt		XX
hired 8/14/2007				2nd Formal Obs				
				Summative Rpt				

Schwartz, Jennifer	NFLD	BARKER	PE Teacher	1st Formal Obs		Summative Rpt		XX

hired 8/21/2000				2nd Formal Obs				
				Summative Rpt				

Unick, Kathy	NFLD	BARKER	Resource Teacher					XX
hired 8/24/1981				1st Formal Obs		Summative Rpt		Summative Rpt
				2nd Formal Obs				
				Summative Rpt				

**PHASE III- NFLD**

NAME	BLDG	EVALUATOR	POSITION	PROBATIONARY		PHASE I		PHASE II
Drumheller, Cindy	NFLD	BARKER	1st Teacher					
hired 8/24/1981				1st Formal Obs	12/2/11	Summative Rpt		Summative Rpt
				2nd Formal Obs				
				Summative Rpt				

Hiegel, Lori	NFLD	BARKER	3rd Teacher					
hired 8/25/1988				1st Formal Obs		Summative Rpt		Summative Rpt
				2nd Formal Obs				
				Summative Rpt				

Manasek, Barb	NFLD	BARKER	4th Teacher					
hired 8/19/1986				1st Formal Obs		Summative Rpt		Summative Rpt
				2nd Formal Obs				
				Summative Rpt				

McKibbin, Micki	NFLD	BARKER	Resource Teacher					
hired 8/19/2003				1st Formal Obs		Summative Rpt		Summative Rpt
				2nd Formal Obs				
				Summative Rpt				

Sabo, Dawn	NFLD	BARKER	3rd Teacher					
hired 8/19/1986				1st Formal Obs		Summative Rpt		Summative Rpt
				2nd Formal Obs				

## CLASSIFIED - NFLD

NAME	BLDG	EVALUATOR	POSITION	8-WEEK EVAL	ANNUAL EVAL	HIRE DATE
Bernhardt, Jackie	NFLD	BARKER	Resource Para		1/12	10/8/2007
Brannan, Alexanderia	NFLD	BARKER	ASP Para Educator		1/12	9/9/2010
Castro, Hope	NFLD	BARKER	Instructional Para K-3		1/12	3/28/1989
Closson, Mary Ann	NFLD	BARKER	Computer Sci Para		1/12	8/16/2006
Doradjiniahma, Emery	NFLD	BARKER	Custodian	X	1/12	11/4/2011
Demoret, Sara	NFLD	BARKER	Instructional Para K-3		1/12	8/16/2006
Dorador, Rodney	NFLD	BARKER	Custodian		1/12	6/26/2006
Foland, Joe	NFLD	BARKER	ASP Para Educator	X	12/1	8/23/2011
Garcia, Gabriela	NFLD	BARKER	ASP Para Educator		1/12	8/12/2010
Garza, Janie	NFLD	BARKER	Instructional Para K-3		1/12	9/20/2004
Gross, Robyn	NFLD	BARKER	Instructional Para K-3 & Cafeteria		1/12	8/24/2001
Guterriez, Tara	NFLD	BARKER	Instructional Para K-3	X	1/12	8/4/2011
James, Nancy	NFLD	BARKER	Learning Lab Para		1/12	8/13/2008
Jensen, Sarah	NFLD	BARKER	Instructional Para K-3		1/12	8/18/2009
Lathrop, Lindsey	NFLD	BARKER	Instructional Para K-3	X	1/12	8/16/2011
Miller, Linda	NFLD	BARKER	Resource Para		1/12	8/31/1998
Osborn, Terri	NFLD	BARKER	Instructional Para Kk-3	X	1/12	8/15/2011
Quick, Jeannine	NFLD	BARKER	Learn Lab Para		1/12	4/12/1994
Schnell, Ellen	NFLD	BARKER	Secretary		1/12/12 3/21/12	8/26/1991
Sims, Ronnie	NFLD	BARKER	ASP Site Coordin. Recovery Rm Interv		1/12	8/16/2006
Smith, Michelle	NFLD	BARKER	Instruction Para K-3 & Title		1/12	9/22/2008
Trauernicht, Terri	NFLD	BARKER	Instructional Para K-3		1/12	8/24/2001
Ward, Ginny	NFLD	BARKER	Media Para		1/12	8/25/1988
Ysac, Deanna	NFLD	BARKER	Learning Lab Para	x	1/12	8/29/2011

**CEDAR CANYON**

**BETTY SMITH - Principal**

**PROBATIONARY**

NAME	BLDG	EVALUATOR	POSITION	PROBATIONARY		PHASE I		PHA
Rounds, Amanda	CC	B. SMITH	SPED Teacher	XX				
				1st Formal Obs		Summative Rpt		Summative Rpt
				2nd Formal Obs				
				Summative Rpt				

Smith, Allison	CC	B. SMITH	Teacher - 2nd	XX				
				1st Formal Obs		Summative Rpt		Summative Rpt
				2nd Formal Obs				
				Summative Rpt				

**PHASE I - Cedar Canyon**

NAME	BLDG	EVALUATOR	POSITION	PROBATIONARY		PHASE I		PHA
Barney, Veronica	CC	B. SMITH	Teacher - PE/Resource			XX		
				1st Formal Obs		Summative Rpt		Summative Rpt
				2nd Formal Obs				
				Summative Rpt				

Foos, Kendra	CC	B. SMITH	Teacher - 2nd			XX				
				1st Formal Obs		Summative Rpt	3/27/2012	Summative Rpt		
				hire date 8/13/2008		2nd Formal Obs				
						Summative Rpt				

Funk, Stanna	CC	B. SMITH	Teacher - 5 & 6			XX				
				1st Formal Obs		Summative Rpt	3/22/2012	Summative Rpt		
				hire date 8/13/2008		2nd Formal Obs				
						Summative Rpt				

Land, Judy	CC	B. SMITH	Teacher - K			XX		
				1st Formal Obs		Summative Rpt		Summative Rpt

2nd Formal Obs				
Summative Rpt				

McAndrew, Martin	CC	B. SMITH	Media Specialist						
				1st Formal Obs		XX			Summative Rpt
				2nd Formal Obs					
				Summative Rpt					Summative Rpt

Taedter, Cori	CC	B. SMITH	Teacher - Music						
				1st Formal Obs		XX			Summative Rpt
				2nd Formal Obs					
				Summative Rpt					Summative Rpt

Wobig, Ruth	CC	B. SMITH	Teacher - 4th & 5th						
				1st Formal Obs		XX			Summative Rpt
				2nd Formal Obs					
				Summative Rpt					Summative Rpt

Zeiler, Monty	CC	B. SMITH	Teacher - 3 & 4						
				1st Formal Obs		XX			Summative Rpt
				hire date 8/13/2008			3/27/2012		
				2nd Formal Obs					Summative Rpt
				Summative Rpt					

PHASE ii - Cedar Canyon

Beatty, Peg	CC	B. SMITH	Teacher - 1st						
				1st Formal Obs					XX
				hire date 8/15/1973					Summative Rpt
				2nd Formal Obs					
				Summative Rpt					

CLASSIFIED - CEDAR CANYON

NAME	BLDG	EVALUATOR	POSITION	8-WEEK EVAL	ANNUAL EVAL	HIRE DATE
Bays, John	CC	B. SMITH	Para Educator		2/1/12	8/18/09

Brown, Lisa	CC	B. SMITH	Secretary			
Kiesel, Susan	CC	B. SMITH	Para Educator	goals 11/2/11	2/1/12	8/16/2011
Kuxhausen, Michelle	CC	B. SMITH	Para Educator	goals 11/7/11	1/31/12	8/29/2011
Parker, Rebecca	CC	B. SMITH	Para Educator		1/31/12	8/18/2008
Reinbold, Robin	CC	B. SMITH	Para Educator		2/3/12	8/22/07
Taylor, Tiffanie	CC	B. SMITH	Para Educator		2/2/12	6/1/2002

**JUNIOR HIGH SCHOOL**

**DORA OLIVARES**

**PROBATIONARY - JUNIOR HIGH**

NAME	BLDG	EVALUATOR	POSITION	PROBATIONARY		PHASE I			PHA	
Broderick, Michael	JH	OLIVARES	Social Studies	XX			Summative Rpt		Summative Rpt	
				1st Formal Obs	10/7/10					
				2nd Formal Obs	11/9/11					
hired 8/13/2008				Summative Rpt						

Cobos, Richard	JH	OLIVARES	Math Teacher	XX			Summative Rpt		Summative Rpt	
				1st Formal Obs	11/29/11					
				2nd Formal Obs	3/22/12					
hired 8/11/2010				Summative Rpt						

Gowin, Melanie	JH	OLIVARES	English Teacher	XX			Summative Rpt		Summative Rpt	
				1st Formal Obs	12/12/11					
				2nd Formal Obs	3/1/12					
hired 8/11/2010				Summative Rpt						

Gross, Amy	JH	OLIVARES	Resource Teacher	XX			Summative Rpt		Summative Rpt	
				1st Formal Obs						
				2nd Formal Obs	10/20/11					
hired 8/13/2008				Summative Rpt						

				XX					
--	--	--	--	----	--	--	--	--	--

Hadenfeldt, Amanda	JH	OLIVARES	Math Teacher	1st Formal Obs	11/23/11		Summative Rpt		Summative Rpt
hired 8/11/2010				2nd Formal Obs	2/24/12				
				Summative Rpt					

Palser, Crystal	JH	OLIVARES	Computer Sci.	XX							
				1st Formal Obs	9/24/10					Summative Rpt	Summative Rpt
				2nd Formal Obs							
				Summative Rpt							

Prochazka, Misty	JH	OLIVARES	Band	XX							
				1st Formal Obs						Summative Rpt	Summative Rpt
				2nd Formal Obs							
				Summative Rpt							

Propp, Amanda	JH	OLIVARES	Math	XX							
				1st Formal Obs	9/21/10					Summative Rpt	Summative Rpt
				2nd Formal Obs							
				Summative Rpt							

Treffer, Ben	JH	OLIVARES	Social Studies	XX							
				1st Formal Obs	10/1/10					Summative Rpt	Summative Rpt
				2nd Formal Obs							
				Summative Rpt							

**PHASE I - JUNIOR HIGH**

NAME	BLDG	EVALUATOR	POSITION	PROBATIONARY		PHASE I		PHASE I			
Hartwig, Mick	JH	OLIVARES	PE				XX				
				1st Formal Obs						Summative Rpt	Summative Rpt
				2nd Formal Obs							
				Summative Rpt							

Kleager, Marsha	JH	OLIVARES	Social Studies				XX		
				1st Formal Obs					

2nd Formal Obs				
Summative Rpt				

Richter, Chuck	JH	OLIVARES	Industrial Tech				XX		
				1st Formal Obs		Summative Rpt		Summative Rpt	
				2nd Formal Obs					
				Summative Rpt					

**PHASE II - JR HIGH**

NAME	BLDG	EVALUATOR	POSITION	PROBATIONARY		PHASE I		PHASE II
Keller, Kristi	JH	OLIVARES	7/8 Science Teacher					
				1st Formal Obs		Summative Rpt		Summative Rpt
				2nd Formal Obs				
hired 8/25/1986				Summative Rpt				

Siebke, Julie	JH	OLIVARES	Counselor					XX
				1st Formal Obs		Summative Rpt		Summative Rpt
				2nd Formal Obs				
				Summative Rpt				

**PHASE III - JR HIGH**

NAME	BLDG	EVALUATOR	POSITION	PROBATIONARY		PHASE I		PHASE II
Anderson, Janelle	JH	OLIVARES	Science					
				1st Formal Obs		Summative Rpt		Summative Rpt
				2nd Formal Obs				
				Summative Rpt				

Mathews, Janelle	JH	OLIVARES	Resource					
				1st Formal Obs		Summative Rpt		Summative Rpt
				2nd Formal Obs				

Summative Rpt				
---------------	--	--	--	--

NAME	BLDG	EVALUATOR	POSITION	PROBATIONARY	PHASE I	PHA
Osborn, Brianne	JH	OLIVARES	English	1st Formal Obs	Summative Rpt	Summative Rpt
				2nd Formal Obs		
				Summative Rpt		

Russell, Melody	JH	OLIVARES	Math	1st Formal Obs	Summative Rpt	Summative Rpt
				2nd Formal Obs		
				Summative Rpt		

Sharp, Judy	JH	OLIVARES	PE	1st Formal Obs	Summative Rpt	Summative Rpt
				2nd Formal Obs		
				Summative Rpt		

Smith, Yvonne	JH	OLIVARES	English	1st Formal Obs	Summative Rpt	Summative Rpt
				2nd Formal Obs		
				Summative Rpt		

Van Dyke, Julie	JH	OLIVARES	7/8th Science Teacher	1st Formal Obs	Summative Rpt	Summative Rpt
				2nd Formal Obs		
				Summative Rpt		
hired 8/20/1984						

**CLASSIFIED - JUNIOR HIGH**

NAME	BLDG	EVALUATOR	POSITION	8-WEEK EVAL	ANNUAL EVAL
Fulk, Alisa	JH	OLIVARES	Secretary		
Gingrich, Dennis	JH	OLIVARES	Instructional Para		

Hinojosa, Fred	JH	OLIVARES	Custodian		
Kaufman, Susie	JH	OLIVARES	Secretary		
Torres, Gloria	JH	OLIVARES	Custodian		
Yarwood, Deb	JH	OLIVARES	SPED Aide		

**FRESHMAN ACADEMY**

**KRAIG WEYRICH - Assistant Principal**

**CERTIFIED - PROBATIONARY**

NAME	BLDG	EVALUATOR	POSITION	PROBATIONARY		PHASE I		PHA
------	------	-----------	----------	--------------	--	---------	--	-----

**PHASE I - Freshman Academy**

NAME	BLDG	EVALUATOR	POSITION	PROBATIONARY		PHASE I		PHA
Rhodes, Jimmie hire date	SH	WEYRICH	Physical Ed			XX		
				1st Formal Obs		Summative Rpt		Summative Rpt
				2nd Formal Obs				
				Summative Rpt				

Sulu, Pedro hire date	SH	WEYRICH	Foreign Lang.			XX		
				1st Formal Obs		Summative Rpt		Summative Rpt
				2nd Formal Obs				
				Summative Rpt				

**PHASE II**

NAME	BLDG	EVALUATOR	POSITION	PROBATIONARY		PHASE I		PHA
Helgerson, Lane hire date	SH	WEYRICH	English					XX
				1st Formal Obs		Summative Rpt		Summative Rpt
				2nd Formal Obs				
				Summative Rpt				

Hadenfeldt, Lisa hire date	F/A	WEYRICH	English					XX
				1st Formal Obs		Summative Rpt		Summative Rpt
				2nd Formal Obs				
				Summative Rpt				

Green, Pat	F/A	WEYRICH	Computers						XX
hire date				1st Formal Obs		Summative Rpt			Summative Rp
				2nd Formal Obs					
				Summative Rpt	graslie				

Smith, Gary	F/A	WEYRICH	Math						XX
hire date				1st Formal Obs		Summative Rpt			Summative Rp
				2nd Formal Obs					
				Summative Rpt					

Trautman, Jill	SH	WEYRICH	Special Education						XX
hire date				1st Formal Obs		Summative Rpt			Summative Rp
				2nd Formal Obs					
				Summative Rpt					

**PHASE III**

NAME	BLDG	EVALUATOR	POSITION	PROBATIONARY		PHASE I		PHA
Busby, Kim	F/A	WEYRICH	Math Teacher					
hired 8/19/2003				1st Formal Obs		Summative Rpt		Summative Rp
				2nd Formal Obs				
				Summative Rpt				

Coon, Diane	F/A	WEYRICH	Science Teacher					
hired 8/20/1985				1st Formal Obs		Summative Rpt		Summative Rp
				2nd Formal Obs				
				Summative Rpt				

**CLASSIFIED - FRESHMAN ACADEMY**

NAME	BLDG	EVALUATOR	POSITION	8-WEEK EVAL	ANNUAL EVAL	Hire Date
Blanco, Phyllis	F/A	Weyrich	Secretary		11/8/11 3/15/12	3/23/98
DeOllos, Fred	F/A	Weyrich	Custodian		2/27/12	1/6/97
Montague, Linda	F/A	Weyrich	Media Para Educator		1/23/12	10/11/06



				Summative Rpt					
--	--	--	--	---------------	--	--	--	--	--

Johnson, Pearl	SH	SEILER	SCIENCE	XX									
				1st Formal Obs	11/22/11					Summative Rpt	Summative Rpt		
				hire date	8/12/2011					2nd Formal Obs	3/26/12		
				Summative Rpt									

Lashley, David	SH	HUBBARD	Guidance Counselor	XX									
				1st Formal Obs	12/6/11					Summative Rpt	Summative Rpt		
				hire date	8/11/2010					2nd Formal Obs			
				Summative Rpt									

Pittman, Jace	SH	HUBBARD	English/ Science Teacher	XX									
				1st Formal Obs	12/6/11					Summative Rpt	Summative Rpt		
				hire date	8/11/2010					2nd Formal Obs			
				Summative Rpt									

**PHASE I - SR. HIGH**

NAME	BLDG	EVALUATOR	POSITION	PROBATIONARY		PHASE I			PHASE II
Bishop, Mark	SH	HUBBARD	Industrial Tech			XX			
				1st Formal Obs		Summative Rpt	Summative Rpt		
				hire date		2nd Formal Obs			
				Summative Rpt		Summative Rpt			

Brittan, Ligia	SH	SEILER	Foreign Language			XX			
				1st Formal Obs		Summative Rpt	Summative Rpt		
				hire date		2nd Formal Obs			
				Summative Rpt		Summative Rpt			

DeMaranville, Jason	SH	SEILER	Social Studies			XX			
				1st Formal Obs		Summative Rpt	Summative Rpt		

hire date

Social Studies

2nd Formal Obs

Summative Rpt

XX

Summative Rpt

Summative Rpt

Ediger, Patti

SH

SEILER

Special Education

1st Formal Obs

hire date

2nd Formal Obs

Summative Rpt

Johnson, Randy

SH

SEILER

Science

1st Formal Obs

hire date

2nd Formal Obs

Summative Rpt

XX

Summative Rpt

Summative Rpt

Marez, Rick

F/A

HUBBARD

FA Counselor

1st Formal Obs

hire date

2nd Formal Obs

Summative Rpt

XX

Summative Rpt

Summative Rpt

Parker, Laurie

SH

HUBBARD

Math

1st Formal Obs

hire date

2nd Formal Obs

Summative Rpt

XX

Summative Rpt

Summative Rpt

Plummer, Randy

SH

HUBBARD

Busines

1st Formal Obs

hire date

2nd Formal Obs

Summative Rpt

XX

Summative Rpt

Summative Rpt

Schultz, Janelle

SH

SEILER

English

1st Formal Obs

hire date

2nd Formal Obs

XX

Summative Rpt

Summative Rpt

Summative Rpt				
---------------	--	--	--	--

Stoltenberg, Joy	SH	SEILER	Special Education				XX		
				1st Formal Obs		Summative Rpt			Summative Rpt
				2nd Formal Obs					
Summative Rpt									
hire date									

Thompson, Tyler	SH	SEILER	Speech				XX		
				1st Formal Obs	10/19/10	Summative Rpt			Summative Rpt
				2nd Formal Obs					
Summative Rpt									
hire date									

**PHASE II - SR. HIGH**

NAME	BLDG	EVALUATOR	POSITION	PROBATIONARY		PHASE I		PHA	
Brown, Broc	SH	HUBBARD	Computers					XX	
				1st Formal Obs		Summative Rpt			Summative Rpt
				2nd Formal Obs					
Summative Rpt									
hire date									

Cook, Chris	SH	HUBBARD	Art					XX	
				1st Formal Obs		Summative Rpt			Summative Rpt
				2nd Formal Obs					
Summative Rpt									
hire date									

Freeburg, Adam	SH	HUBBARD	PE					XX	
				1st Formal Obs		Summative Rpt			Summative Rpt
				2nd Formal Obs					
Summative Rpt									
hire date									

Gable, Stevie	SH	HUBBARD	Fam. Con. Science					XX	
				1st Formal Obs		Summative Rpt			Summative Rpt
				2nd Formal Obs					
Summative Rpt									
hire date									

Hamer, Sharyl	SH	HUBBARD	Counselor							XX
hire date				1st Formal Obs		Summative Rpt				Summative Rpt
				2nd Formal Obs						
				Summative Rpt						

Larson, Kelli	SH / FA	SEILER	Math/ Science							XX
hire date				1st Formal Obs		Summative Rpt				Summative Rpt
				2nd Formal Obs						
				Summative Rpt						

North, Paul	F/A	SEILER	Social Studies							XX
hire date				1st Formal Obs		Summative Rpt				Summative Rpt
				2nd Formal Obs						
				Summative Rpt						

Raines, Randy	SH /FA/JH	HUBBARD	Instrumental Music							XX
hire date				1st Formal Obs		Summative Rpt				Summative Rpt
				2nd Formal Obs						
				Summative Rpt						

Salomon, Matt	SH	SEILER	Social Studies							XX
hire date				1st Formal Obs		Summative Rpt				Summative Rpt
				2nd Formal Obs						
				Summative Rpt						

Stobel, Andy	SH	HUBBARD	Foreign Lang.							XX
hire date				1st Formal Obs		Summative Rpt				Summative Rpt
				2nd Formal Obs						
				Summative Rpt						

Sweeney, Lisa	SH	SEILER	PE							XX
hire date				1st Formal Obs		Summative Rpt				Summative Rpt
				2nd Formal Obs						

Summative Rpt				
---------------	--	--	--	--

Vohland, Angie	SH	SEILER	Foreign Language						XX
hire date				1st Formal Obs		Summative Rpt			Summative Rpt
				2nd Formal Obs					
				Summative Rpt					

PHASE III

NAME	BLDG	EVALUATOR	POSITION	PROBATIONARY		PHASE I		PHA
Anderson, Bob	SH	SEILER	Industrial Tech					
hire date				1st Formal Obs		Summative Rpt		Summative Rpt
				2nd Formal Obs				
				Summative Rpt				

Graslie, Kim	SH	HUBBARD	Math					
hire date				1st Formal Obs		Summative Rpt		Summative Rpt
				2nd Formal Obs				
				Summative Rpt				

Revelle-King, Shelly	SH	SEILER	Vocal Music					
hire date				1st Formal Obs		Summative Rpt		Summative Rpt
				2nd Formal Obs				
				Summative Rpt				

Kinnaman, Rick	SH	SEILER	Industrial Tech					
hire date				1st Formal Obs		Summative Rpt		Summative Rpt
				2nd Formal Obs				
				Summative Rpt				

Smith, Mike	SH	SEILER	Math					
hire date				1st Formal Obs		Summative Rpt		Summative Rpt
				2nd Formal Obs				
				Summative Rpt				

Thompson, Roxann	SH	SEILER	English	1st Formal Obs	Summative Rpt	Summative Rpt
hire date				2nd Formal Obs		
				Summative Rpt		

**SR. HIGH CLASSIFIED**

NAME	BLDG	EVALUATOR	POSITION	8-WEEK EVAL	ANNUAL EVAL	Hire Date
Black, Bruce	SH	Hubbard	Custodian	12/6/11		8/11/1993
Deaver, Shana	SH	Hubbard	SPED Para	12/9/11		8/17/2009
Hand, David	SH	SEILER	Instructional Aide			
Lewandowski, Renee	SH	Hubbard	Secretary			
Livermont, Bill	SH	Hubbard	Custodian	12/7/11		8/25/2000
Radzynski, Tammy	SH	Hubbard	Secretary	12/8/11		8/5/2002
Raines, Deb	SH	SEILER	Study Hall Para	12/6/11		9/2/1997
Roland, Sharon	SH	SEILER	Secretary			
Roque, Ulysses	SH	SEILER	Career Coach Para	11/8/11	12/6/11	8/29/2011
Rowlee, Shelley	HS	SEILER	SPED Para	12/6/11		9/1/1997
Schadwinkel, Robin	HS	Boggs	Media Para	12/8/11		8/15/1988

**COACH PERFORMANCE EVALUATIONS 2011-12**

NAME	BLDG	EVALUATOR	HEAD COACH POSITION	ANNUAL EVAL
Barker, Caleigh	FA/SH		Girl's Cross Country	
Barker, Caleigh	FA/SH		Girl's Track	
Bonuchi, Molly	SH		Girl's Softball	
Clark, Justin	SH		Boy's Soccer	
Hamer, Russ	SH		Boy's Golf	
Hartwig, Mick	SH		Girl's Golf	
Land, Steve	SH		Girl's Basketball	
Marez, Rick	JH/SH		Boy's Cross Country	

Oboyle, Tom	SH		Varsity Football	
Plummer, Randy	SH		Boy's Varsity Basketball	
Plummer, Randy	FA/SH		Boy's Track	
Rhodes, Jimmie	SH		Varsity Wrestling	
Schadwinkel, Craig	SH		Varsity Volleyball	
Sweeney, Lisa	SH		Girl's Soccer	

SE II		PHASE III	
		Formal Obs	
		Summative Rpt	

---

ot		Formal Obs	
		Summative Rpt	

		Formal Obs	
		Summative Rpt	

		Formal Obs	
		Summative Rpt	

		Formal Obs	
		Summative Rpt	

<b>SE II</b>		<b>PHASE III</b>	
		Formal Obs	
		Summative Rpt	

ot		Formal Obs	
		Summative Rpt	

SE II		PHASE III	
ot		Formal Obs	
		Summative Rpt	

ot		Formal Obs	
		Summative Rpt	

SE II		PHASE III	
		XX	
ot		Formal Obs	
		Summative Rpt	

		XX	
ot		Formal Obs	
		Summative Rpt	



SE II		PHASE III	
		Formal Obs	
		Summative Rpt	

--	--	--	--

		Formal Obs	
		Summative Rpt	

		Formal Obs	
		Summative Rpt	

ot		Formal Obs	
		Summative Rpt	

SE II		PHASE III	
ot		Formal Obs	
		Summative Rpt	

ot		Formal Obs	
		Summative Rpt	

ot		Formal Obs	
		Summative Rpt	

--	--	--	--

xt		Formal Obs	
		Summative Rpt	

xt		Formal Obs	
		Summative Rpt	

xt		Formal Obs	
		Summative Rpt	

<b>SE II</b>		<b>PHASE III</b>	
		Formal Obs	
		Summative Rpt	

		Formal Obs	
		Summative Rpt	

xt		Formal Obs	
		Summative Rpt	

xt			

		Summative Rpt	

st		Formal Obs	
		Summative Rpt	

		Formal Obs	
		Summative Rpt	

		Formal Obs	
		Summative Rpt	

SE II		PHASE III	
		XX	
st		Formal Obs	
		Summative Rpt	

		XX	
st		Formal Obs	
		Summative Rpt	

		XX	
st		Formal Obs	
		Summative Rpt	

--	--	--	--

		<b>XX</b>	
st		Formal Obs	
		Summative Rpt	

		<b>XX</b>	
st			
		Summative Rpt	

		<b>XX</b>	
st		Formal Obs	
		Summative Rpt	

		<b>XX</b>	
st		Formal Obs	
		Summative Rpt	

		<b>XX</b>	
		Formal Obs	
		Summative Rpt	

		<b>XX</b>	
st		Formal Obs	
		Summative Rpt	

---



SE II		PHASE III	
st		Formal Obs	
		Summative Rpt	

st		Formal Obs	
		Summative Rpt	

st		Formal Obs	
		Summative Rpt	

SE II		PHASE III	
st		Formal Obs	
		Summative Rpt	

st		Formal Obs	
		Summative Rpt	

st		Formal Obs	
		Summative Rpt	

--	--	--	--

st		Formal Obs	
		Summative Rpt	

		Formal Obs	
		Summative Rpt	

st		Formal Obs	
		Summative Rpt	

st		Formal Obs	
		Summative Rpt	

st		Formal Obs	
		Summative Rpt	

st		Formal Obs	
		Summative Rpt	

st		Formal Obs	
		Summative Rpt	

st		Formal Obs	
		Summative Rpt	

st		Formal Obs	
		Summative Rpt	

st		Formal Obs	
		Summative Rpt	

<b>SE II</b>		<b>PHASE III</b>	
		<b>XX</b>	
st		Formal Obs	
		Summative Rpt	
		<b>XX</b>	
st		Formal Obs	
		Summative Rpt	

		<b>XX</b>	
st		Formal Obs	
		Summative Rpt	

		<b>XX</b>	
--	--	-----------	--

st		Formal Obs	
		Summative Rpt	

		XX	
st		Formal Obs	
		Summative Rpt	

<b>SE II</b>		<b>PHASE III</b>	
st		Formal Obs	
		Summative Rpt	

--	--	--	--

pt		Formal Obs	
		Summative Rpt	

pt		Formal Obs	
		Summative Rpt	

pt		Formal Obs	
		Summative Rpt	

pt		Formal Obs	
		Summative Rpt	

pt		Formal Obs	
		Summative Rpt	

<b>SE II</b>		<b>PHASE III</b>	
pt		Formal Obs	
		Summative Rpt	

--	--	--

st		Formal Obs	
		Summative Rpt	

st		Formal Obs	
		Summative Rpt	

st		Formal Obs	
		Summative Rpt	

st		Formal Obs	
		Summative Rpt	

st		Formal Obs	
		Summative Rpt	

st		Formal Obs	
		Summative Rpt	

xt		Formal Obs	
		Summative Rpt	
xt		Formal Obs	
		Summative Rpt	

<b>SE II</b>		<b>PHASE III</b>	
xt		Formal Obs	
		Summative Rpt	

xt		Formal Obs	
		Summative Rpt	
xt		Formal Obs	
		Summative Rpt	

xt		Formal Obs	
		Summative Rpt	

xt		Formal Obs	

		Summative Rpt	

ot		Formal Obs	
		Summative Rpt	

<b>SE II</b>		<b>PHASE III</b>	
		<b>XX</b>	
ot		Formal Obs	
		Summative Rpt	

		<b>XX</b>	
ot		Formal Obs	
		Summative Rpt	

		<b>XX</b>	
ot		Formal Obs	3/22/2012
		Summative Rpt	

		<b>XX</b>	
ot		Formal Obs	
		Summative Rpt	

		<b>XX</b>	
ot		Formal Obs	
		Summative Rpt	

--	--	--	--

SE II		PHASE III	
		Formal Obs	
		Summative Rpt	

ot		Formal Obs	
		Summative Rpt	

SE II		PHASE III	
ot		Formal Obs	
		Summative Rpt	
		TA Plan	

ot		Formal Obs	
		Summative Rpt	

ot		Formal Obs	
		Summative Rpt	

ot		Formal Obs	

		Summative Rpt	
st		Formal Obs	
		Summative Rpt	

st		Formal Obs	
		Summative Rpt	

st		Formal Obs	
		Summative Rpt	

st		Formal Obs	
		Summative Rpt	

3/23/2012		Formal Obs	
		Summative Rpt	

SE II		PHASE III	
ot		Formal Obs	
		Summative Rpt	

ot		Formal Obs	
		Summative Rpt	

ot		Formal Obs	
		Summative Rpt	

ot		Formal Obs	
		Summative Rpt	

--	--	--	--

ot		Formal Obs	
		Summative Rpt	

ot		Formal Obs	
		Summative Rpt	

ot		Formal Obs	
		Summative Rpt	

ot		Formal Obs	
		Summative Rpt	

ot		Formal Obs	
		Summative Rpt	

<b>SE II</b>		<b>PHASE III</b>	
ot		Formal Obs	
		Summative Rpt	

ot		Formal Obs	

		Summative Rpt	

ot		Formal Obs	
		Summative Rpt	

SE II		PHASE III	
		XX	
ot		Formal Obs	2/2/2012
		Summative Rpt	

ot		Formal Obs	
		Summative Rpt	

SE II		PHASE III	
		XX	
ot		Formal Obs	
		Summative Rpt	

		XX	
ot		Formal Obs	
		Summative Rpt	

--	--	--

SE II		PHASE III	
		XX	
		Formal Obs	
		Summative Rpt	

		XX	
st		Formal Obs	
		Summative Rpt	

		XX	
st		Formal Obs	
		Summative Rpt	

		XX	
st		Formal Obs	
		Summative Rpt	

		XX	
st		Formal Obs	1/25/2012
		Summative Rpt	

<b>SE II</b>		<b>PHASE III</b>
--------------	--	------------------

<b>SE II</b>		<b>PHASE III</b>
xt		Formal Obs
		Summative Rpt

xt		Formal Obs
		Summative Rpt

<b>SE II</b>		<b>PHASE III</b>
xt		Formal Obs
		Summative Rpt

xt		Formal Obs
		Summative Rpt

ot		Formal Obs	
		Summative Rpt	

ot		Formal Obs	
		Summative Rpt	

ot		Formal Obs	
		Summative Rpt	

<b>SE II</b>		<b>PHASE III</b>	
		<b>XX</b>	
ot		Formal Obs	11/2/11
		Summative Rpt	

		<b>XX</b>	
ot		Formal Obs	11/10/11
		Summative Rpt	

SE II		PHASE III	
ot		Formal Obs	
		Summative Rpt	

ot		Formal Obs	
		Summative Rpt	

ot		Formal Obs	
		Summative Rpt	

ot		Formal Obs	
		Summative Rpt	

--	--	--	--

xt		Formal Obs	
		Summative Rpt	

xt		Formal Obs	
		Summative Rpt	

xt		Formal Obs	
		Summative Rpt	

<b>SE II</b>		<b>PHASE III</b>	
xt		Formal Obs	
		Summative Rpt	

xt		Formal Obs	
		Summative Rpt	

---

xt		Formal Obs	

		Summative Rpt	

xt		Formal Obs	
		Summative Rpt	

xt		Formal Obs	
		Summative Rpt	

xt		Formal Obs	
		Summative Rpt	

xt		Formal Obs	
		Summative Rpt	

xt		Formal Obs	
		Summative Rpt	

xt		Formal Obs	
		Summative Rpt	

--	--	--

xt		Formal Obs
		Summative Rpt

xt		Formal Obs
		Summative Rpt

<b>SE II</b>		<b>PHASE III</b>
xt		Formal Obs
		Summative Rpt

xt		Formal Obs
		Summative Rpt

xt		Formal Obs
		Summative Rpt

xt		Formal Obs
		Summative Rpt

st		Formal Obs	
		Summative Rpt	

st		Formal Obs	
		Summative Rpt	

st		Formal Obs	
		Summative Rpt	

st		Formal Obs	
		Summative Rpt	

st		Formal Obs	
		Summative Rpt	

st		Formal Obs	
		Summative Rpt	

st		Formal Obs	
		Summative Rpt	

--	--	--

xt		Formal Obs
		Summative Rpt

<b>SE II</b>		<b>PHASE III</b>
		<b>XX</b>
xt		Formal Obs
		Summative Rpt

		<b>XX</b>
		Formal Obs
		Summative Rpt

		<b>XX</b>
xt		Formal Obs
		Summative Rpt

		<b>XX</b>
xt		Formal Obs
		Summative Rpt

		<b>XX</b>
xt		Formal Obs
		Summative Rpt

		XX	
st		Formal Obs	
		Summative Rpt	

**GEIL ELEMENTARY**

**MARY KAY HAUN - Principal**

**CERTIFIED - PROBATIONARY**

NAME	BLDG	EVALUATOR	POSITION	PROBATIONARY		PHASE I		PHASE II		PHAS
Johnson, Brandy	GEIL	HAUN	2nd Teacher	XX						
				1st Formal Obs		Summative Rpt		Summative Rpt		Formal Obs
				hired 8/11/2010	2nd Formal Obs					Summative Rpt
				Summative Rpt						

Jolliffe, Bethany	GEIL	HAUN	Kinder Teacher	XX						
				1st Formal Obs	11/16/11	Summative Rpt		Summative Rpt		Formal Obs
				hired 8/12/2011	2nd Formal Obs					Summative Rpt
				Summative Rpt						

Harrison, Sue	GEIL	HAUN	1st Teacher	XX						
				1st Formal Obs	11/16/11	Summative Rpt		Summative Rpt		Formal Obs
				hired 8/12/2011	2nd Formal Obs					Summative Rpt
				Summative Rpt						

Venable, Crystal	GEIL	HAUN	5th Teacher	XX						
				1st Formal Obs	11/16/11	Summative Rpt		Summative Rpt		Formal Obs
				hired 8/11/2010	2nd Formal Obs					Summative Rpt
				Summative Rpt						

**PHASE I - GEIL**

NAME	BLDG	EVALUATOR	POSITION	PROBATIONARY		PHASE I		PHASE II		PHAS
Jenkins, Natalie	GEIL	HAUN	High Ability Teacher			XX				
				1st Formal Obs		Summative Rpt		Summative Rpt		Formal Obs
				hired 8/19/2002	2nd Formal Obs					Summative Rpt
				Summative Rpt						

Knapper, Barb	GEIL	HAUN	1st Teacher				XX					
				1st Formal Obs		Summative Rpt		Summative Rpt		Formal Obs		
				hired 8/24/1993		2nd Formal Obs						Summative Rpt
				Summative Rpt								

Knight, Kory	GEIL	HAUN	6th Teacher				XX					
				1st Formal Obs		Summative Rpt		Summative Rpt		Formal Obs		
				hired 8/13/2008		2nd Formal Obs						Summative Rpt
				Summative Rpt								

Schadwinkel, Craig	GEIL	HAUN	PE Teacher				XX					
				1st Formal Obs		Summative Rpt		Summative Rpt		Formal Obs		
				hired 8/25/1980		2nd Formal Obs						Summative Rpt
				Summative Rpt								

Svoboda, Troy	GEIL	HAUN	3rd Teacher				XX					
				1st Formal Obs		Summative Rpt		Summative Rpt		Formal Obs		
				hired 9/26/1988		2nd Formal Obs						Summative Rpt
				Summative Rpt								

Toffelmire, Kelly	GEIL	HAUN	Computer Lab Coord				XX					
				1st Formal Obs		Summative Rpt		Summative Rpt		Formal Obs		
				hired 8/13/2008		2nd Formal Obs						Summative Rpt
				Summative Rpt								

**PHASE II - GEIL**

NAME	BLDG	EVALUATOR	POSITION	PROBATIONARY		PHASE I		PHASE II		PHASE III	
Baxter, Kathy	GEIL	HAUN	Resource Teacher					XX			
				1st Formal Obs		Summative Rpt		Summative Rpt		Formal Obs	





Keller, Kathy	GEIL	HAUN	3rd Teacher	1st Formal Obs		Summative Rpt		Summative Rpt		Formal Obs
hired 8/23/1982				2nd Formal Obs						Summative Rpt
				Summative Rpt						

Maser, Beth	GEIL	HAUN	3rd Teacher	1st Formal Obs		Summative Rpt		Summative Rpt		Formal Obs
hired 8/19/2002				2nd Formal Obs						Summative Rpt
				Summative Rpt						

Millay, Peggy	GEIL	HAUN	Title I Teacher	1st Formal Obs		Summative Rpt		Summative Rpt		Formal Obs
hired 8/14/2007				2nd Formal Obs						Summative Rpt
				Summative Rpt						

Propp, Kathy	GEIL	HAUN	Vocal Music	1st Formal Obs		Summative Rpt		Summative Rpt		Formal Obs
hired 8/19/2002				2nd Formal Obs						Summative Rpt
				Summative Rpt						

**GEIL - CLASSIFIED**

NAME	BLDG	EVALUATOR	POSITION	8-WEEK EVAL	ANNUAL EVAL	HIRE DATE
Ashing, Erron	GEIL	Haun		X	2/9/12	
Becker, Kristi	GEIL	HAUN	Instructional Para		X	8/12/10
Brunner, Pam	GEIL	HAUN	Comp Sci Para		2/9/12	3/3/95
Christian, Greg	GEIL	HAUN	Custodian	?		4/7/11
Custer, Chelsea	GEIL	HAUN	Spec. Educ. Para		X	8/18/08
Gingrich, Kathleen	GEIL	HAUN	Media Para		2/9/12	8/25/88

Gregory, Kristie	GEIL	HAUN	Instructional Para		2/9/12	9/8/08
Holliday, Kathy	GEIL	HAUN	Instructional Para		X	1/5/06
Hunzeker, Diane	GEIL	HAUN	Instructional Para		2/9/12	9/21/09
Locker, Gwen	GEIL	HAUN/OLIV ARES	School Nurse		2/9/12	11/8/04
Lyons, Laura	GEIL	HAUN	Instructional Para		2/9/12	8/18/08
Marsh, Jill	GEIL	HAUN	Instructional Para		2/9/12	12/14/06
Mendoza, Jane	GEIL	HAUN	Instructional Para		X	9/11/89
Pfortmiller, Vicki	GEIL	HAUN	Instructional Para		2/9/12	8/18/09
Ryan, Stephanie	GEIL	H		X	2/9/12	
Sabala, Martha	GEIL	HAUN	Instructional Para	X	2/9/12	8/16/11
Schild, Roberta	GEIL	HAUN	Resource Para		2/9/12	8/30/99
Straetker, Marjory	GEIL	HAUN	Instructional Para		2/9/12	8/23/02
Thacker, Tisha	GEIL	H			2/9/12	
Torres, Homero	GEIL	HAUN	Custodian		2/9/12	9/7/99
Walker, Jodie	GEIL	HAUN	Secretary	X	2/9/2012	8/30/1999
Ybara, Ernie	GEIL	Haun	Custodian	X	2/9/2012	

SE III
it

it

it

it

SE III
it

it

it

it

it

it

SE III

it

it

it

it

it

it

it



SE III
t

t

t

t

t

it

it

it

it

---

**NORTHFIELD ELEMENTARY**

**PAM BARKER - Principal**

**CERTIFIED - PROBATIONARY**

NAME	BLDG	EVALUATOR	POSITION	PROBATIONARY		PHASE I	
Gurrola, Eunice	NFLD	BARKER	3rd Teacher	XX		Summative Rpt	
				1st Formal Ob	12/02/11		
				2nd Formal Ob	03/22/12		
hired 8/12/2011				Summative Rpt			

Engel, Kelsey	NFLD	BARKER	2nd Teacher	XX		Summative Rpt	
				1st Formal Ob	12/2/11		
				2nd Formal Ob	03/23/12		
hired 8/12/2011				Summative Rpt			

Kobza, Alisha	NFLD	BARKER	Learning Lab Teacher	XX		Summative Rpt	
				1st Formal Ob	1/4/12		
				2nd Formal Obs			
hired 8/17/2009				Summative Rpt			

Libsack, Jenna	NFLD	BARKER	1st Teacher	XX		Summative Rpt	
				1st Formal Ob	12/2/11		
				2nd Formal Ob	03/23/12		
hired 8/12/2011				Summative Rpt			

Morales, Naomi	NFLD	BARKER	6th Teacher	XX		Summative Rpt	
				1st Formal Ob	12/19/11		
				2nd Formal Obs			
hired 8/17/2009				Summative Rpt			

Sherfey, Candice	NFLD	BARKER	Kinder Teacher	XX		Summative Rpt	
				1st Formal Ob	12/06/11		
				2nd Formal Ob	03/27/12		
hire date 8/11/2010				Summative Rpt			

**PHASE I - NFLD**

NAME	BLDG	EVALUATOR	POSITION	PROBATIONARY		PHASE I	
Bates, Chad	NFLD	BARKER	5th Teacher			XX	
				1st Formal Obs		Summative Rpt	

hired 8/13/2008				2nd Formal Obs				
				Summative Rpt				

Cawiezell, Luanne	NFLD	BARKER	6th Teacher				XX	
				1st Formal Obs		Summative Rpt		
hired 8/24/1989				2nd Formal Obs				
				Summative Rpt				

Fulk, Christy	NFLD	BARKER	K Teacher				XX	
				1st Formal Obs		Summative Rpt		
hired 8/25/1999				2nd Formal Obs				
				Summative Rpt				

Janecek, Matt	NFLD	BARKER	Counselor				XX	
				1st Formal Obs		Summative Rpt		
hired 8/25/1999				2nd Formal Obs				
				Summative Rpt				

Janecek, Mickie	NFLD	BARKER	K Teacher				XX	
				1st Formal Obs		Summative Rpt		
hired 8/24/1998				2nd Formal Obs				
				Summative Rpt				

Kniss, Kathleen	NFLD	BARKER	5th Teacher				XX	
				1st Formal Obs		Summative Rpt		
hired 8/22/1979				2nd Formal Obs				
				Summative Rpt				

Michael, Becky	NFLD	BARKER	Instruction Coach				XX	
				1st Formal Obs		Summative Rpt		
hired 8/19/2003				2nd Formal Obs				
				Summative Rpt				

Nochi, Sandi	NFLD	BARKER	6th Teacher				XX	
				1st Formal Obs		Summative Rpt		
hired 8/25/1999				2nd Formal Obs				
				Summative Rpt				

Pieper, Megan	NFLD	BARKER	1st Teacher				XX	
				1st Formal Obs		Summative Rpt		
hired 8/13/2008				2nd Formal Obs				

Summative Rpt

**XX** Indicates the Phase

**PHASE II - NFLD**

NAME	BLDG	EVALUATOR	POSITION	PROBATIONARY		PHASE I
Kelley, Katy	NFLD	BARKER	2nd Teacher			
				1st Formal Obs		Summative Rpt
				hired 8/23/1982	2nd Formal Obs	
				Summative Rpt		

Pszanka, Brenda	NFLD	BARKER	4th Teacher			
				1st Formal Obs		Summative Rpt
				hired 8/13/2008	2nd Formal Obs	
				Summative Rpt		

Propp, Carol	NFLD	BARKER	Title I Teacher			
				1st Formal Obs		Summative Rpt
				hired 8/15/2001	2nd Formal Obs	
				Summative Rpt		

Rose, Kathy	NFLD	BARKER	Teacher-Music			
				1st Formal Obs		Summative Rpt
				hired 8/14/2007	2nd Formal Obs	
				Summative Rpt		

Schwartz, Jennifer	NFLD	BARKER	PE Teacher			
				1st Formal Obs		Summative Rpt
				hired 8/21/2000	2nd Formal Obs	
				Summative Rpt		

Unick, Kathy	NFLD	BARKER	Resource Teacher			
				1st Formal Obs		Summative Rpt
				hired 8/24/1981	2nd Formal Obs	
				Summative Rpt		

**PHASE III- NFLD**

NAME	BLDG	EVALUATOR	POSITION	PROBATIONARY		PHASE I
Drumheller, Cindy	NFLD	BARKER	1st Teacher			
				1st Formal Obs	12/2/11	Summative Rpt
				hired 8/24/1981	2nd Formal Obs	

				Summative Rpt					
Hiegel, Lori	NFLD	BARKER	3rd Teacher	1st Formal Obs	Summative Rpt				
				hired 8/25/1988					2nd Formal Obs
				Summative Rpt					
Manasek, Barb	NFLD	BARKER	4th Teacher	1st Formal Obs	Summative Rpt				
				hired 8/19/1986					2nd Formal Obs
				Summative Rpt					
McKibbin, Micki	NFLD	BARKER	Resource Teacher	1st Formal Obs	Summative Rpt				
				hired 8/19/2003					2nd Formal Obs
				Summative Rpt					
Sabo, Dawn	NFLD	BARKER	3rd Teacher	1st Formal Obs	Summative Rpt				
				hired 8/19/1986					2nd Formal Obs
				Summative Rpt					

**CLASSIFIED - NFLD**

NAME	BLDG	EVALUATOR	POSITION	8-WEEK EVAL	ANNUAL EVAL	HIRE DATE
Bernhardt, Jackie	NFLD	BARKER	Resource Para		1/12	10/8/2007
Brannan, Alexandria	NFLD	BARKER	ASP Para Educator		1/12	9/9/2010
Castro, Hope	NFLD	BARKER	Instructional Para K-3		1/12	3/28/1989
Closson, Mary Ann	NFLD	BARKER	Computer Sci Para		1/12	8/16/2006
Doradjiniah ma, Emery	NFLD	BARKER	Custodian	X	1/12	11/4/2011
Demoret, Sara	NFLD	BARKER	Instructional Para K-3		1/12	8/16/2006
Dorador, Rodney	NFLD	BARKER	Custodian		1/12	6/26/2006
Foland, Joe	NFLD	BARKER	ASP Para Educator	X	12/1	8/23/2011
Garcia, Gabriela	NFLD	BARKER	ASP Para Educator		1/12	8/12/2010
Garza, Janie	NFLD	BARKER	Instructional Para K-3		1/12	9/20/2004

Gross, Robyn	NFLD	BARKER	Instructional	Para K-3 & Cafeteria		1/12	8/24/2001
Guterriez, Tara	NFLD	BARKER	Instructional Para K-3		X	1/12	8/4/2011
James, Nancy	NFLD	BARKER	Learning Lab Para			1/12	8/13/2008
Jensen, Sarah	NFLD	BARKER	Instructional Para K-3			1/12	8/18/2009
Lathrop, Lindsey	NFLD	BARKER	Instructional Para K-3		X	1/12	8/16/2011
Miller, Linda	NFLD	BARKER	Resource Para			1/12	8/31/1998
Osborn, Terri	NFLD	BARKER	Instructional Para Kk-3		X	1/12	8/15/2011
Quick, Jeannine	NFLD	BARKER	Learn Lab Para			1/12	4/12/1994
Schnell, Ellen	NFLD	BARKER	Secretary			1/12/12 3/21/12	8/26/1991
Sims, Ronnie	NFLD	BARKER	ASP Site Coordin.	Recovery Rm Interv		1/12	8/16/2006
Smith, Michelle	NFLD	BARKER	Instruction	Para K-3 & Title		1/12	9/22/2008
Trauernicht, Terri	NFLD	BARKER	Instructional Para K-3			1/12	8/24/2001
Ward, Ginny	NFLD	BARKER	Media Para			1/12	8/25/1988
Ysac, Deanna	NFLD	BARKER	Learning Lab Para		x	1/12	8/29/2011

PHASE II			PHASE III	
Summative Rpt			Formal Obs	
			Summative Rpt	

Summative Rpt			Formal Obs	
			Summative Rpt	

Summative Rpt			Formal Obs	
			Summative Rpt	

Summative Rpt			Formal Obs	
			Summative Rpt	

Summative Rpt			Formal Obs	
			Summative Rpt	

Summative Rpt			Formal Obs	
			Summative Rpt	

PHASE II			PHASE III	
Summative Rpt			Formal Obs	

			Summative Rpt

Summative Rpt			Formal Obs
			Summative Rpt

Summative Rpt			Formal Obs
			Summative Rpt

Summative Rpt			Formal Obs
			Summative Rpt

Summative Rpt			Formal Obs
			Summative Rpt

Summative Rpt			Formal Obs
			Summative Rpt

Summative Rpt			Formal Obs
			Summative Rpt

Summative Rpt			Formal Obs
			Summative Rpt

Summative Rpt			Formal Obs
			Summative Rpt

--	--	--	--	--

PHASE II			PHASE III	
XX				
Summative Rpt			Formal Obs	
			Summative Rpt	

XX				
Summative Rpt			Formal Obs	
			Summative Rpt	
XX				
Summative Rpt			Formal Obs	
			Summative Rpt	

XX				
Summative Rpt			Formal Obs	
			Summative Rpt	

XX				
Summative Rpt			Formal Obs	
			Summative Rpt	

XX				
Summative Rpt			Formal Obs	
			Summative Rpt	

PHASE II			PHASE III	
			XX	
Summative Rpt			Formal Obs	
			Summative Rpt	

--	--	--	--	--

			XX	
Summative Rpt			Formal Obs	
			Summative Rpt	

			XX	
Summative Rpt			Formal Obs	3/22/2012
			Summative Rpt	

			XX	
Summative Rpt			Formal Obs	
			Summative Rpt	

			XX	
Summative Rpt			Formal Obs	
			Summative Rpt	





Bailey, Terry	LINC	SCHLOTHA	Teacher - 5	1st Formal Obs	Summative Rpt			S
				2nd Formal Obs				
				Summative Rpt				

Brester, Angie	LINC	SCHLOTHA	Teacher - 3	1st Formal Obs	Summative Rpt			
				2nd Formal Obs				
				Summative Rpt				

Cardwell, Kim	LINC	SCHLOTHA	Teacher - 4	1st Formal Obs	Summative Rpt			
				2nd Formal Obs				
				Summative Rpt				

Green, Keat	LINC	SCHLOTHA	Teacher - 5	1st Formal Obs	Summative Rpt			
				2nd Formal Obs				
				Summative Rpt				

Hague, Bev	LINC	SCHLOTHA	Reading Co	1st Formal Obs	Summative Rpt			
				2nd Formal Obs				
				Summative Rpt				

Mendoza, M	LINC	SCHLOTHA	Counselor	1st Formal Obs	Summative Rpt			
				2nd Formal Obs				
				Summative Rpt				

Mitchell, Cir	LINC	SCHLOTHA	Teacher - K	1st Formal Obs	Summative Rpt			
				2nd Formal Obs				
				Summative Rpt				

Steele, Traci	LINC	SCHLOTHA	Teacher - 4	1st Formal Obs	Summative Rpt			
				2nd Formal Obs				
				Summative Rpt				

Tofflemire, Le	LINC	SCHLOTHA	Teacher - M	1st Formal Obs	Summative Rpt			
				2nd Formal Obs				
				Summative Rpt				

**PHASE III - LINCOLN**

NAME	BLDG	EVALUATOR	POSITION	PROBATIONARY	PHASE I
Becking, Fa	LINC	SCHLOTHA	Teacher - 6	1st Formal Obs	Summative Rpt
				2nd Formal Obs	
				Summative Rpt	
Kocer, Lynn	LINC	SCHLOTHA	Teacher - 2	1st Formal Obs	Summative Rpt
				2nd Formal Obs	
				Summative Rpt	
Lyles, Judi	LINC	SCHLOTHA	Teacher - 6	1st Formal Obs	Summative Rpt
				2nd Formal Obs	
				Summative Rpt	
Sample, Jea	LINC	SCHLOTHA	Reading Co	1st Formal Obs	Summative Rpt
				2nd Formal Obs	
				Summative Rpt	
Stark, Miche	LINC	SCHLOTHA	Teacher - 3	1st Formal Obs	Summative Rpt
				2nd Formal Obs	
				Summative Rpt	

**LINCOLN - CLASSIFIED**

NAME	BLDG	EVALUATOR	POSITION	8-WEEK EVAL	ANNUAL EVAL
Bustanza, Ar	LINC	G.S.	Instructional Aide		
Collins, Rob	LINC	G.S.	Instructional Aide		
Davis, Dorol	LINC	G.S.	Instructional Aide		
Gatch, Kath	LINC	G.S.	Special Ed Aide		
Harder, Barb	LINC	G.S.	Computer Para	10/19/11	8/16/11
Jolliffe, Rich	LINC	G.S.	Instructional Aide		
Kanarick, M	LINC	G.S.	Secretary		
Larson, Dar	LINC	G.S.	Kindergarten Aide		
Leeper, Ste	LINC	G.S.	Media Para		
Moreno, Me	LINC	G.S.	Instructional Aide		
Muhr, LeRo	LINC	G.S.	Custodian		
Smallfoot, B	LINC	G.S.	Custodian		
Suhr, Collet	LINC	G.S.	Instructional Aide		
Wendt, Kay	LINC	G.S.	Kindergarten Aide		

PHASE II			PHASE III	
Summative Rpt			Formal Obs	
			Summative Rpt	

Summative Rpt			Formal Obs	
			Summative Rpt	

Summative Rpt			Formal Obs	
			Summative Rpt	

PHASE II			PHASE III	
Summative Rpt			Formal Obs	
			Summative Rpt	

Summative Rpt			Formal Obs	
			Summative Rpt	

Summative Rpt			Formal Obs	
			Summative Rpt	

Summative Rpt			Formal Obs	
			Summative Rpt	

XX				
----	--	--	--	--

Summative Rpt			Formal Obs	
			Summative Rpt	

<b>XX</b>				
Summative Rpt			Formal Obs	
			Summative Rpt	

<b>XX</b>				
Summative Rpt			Formal Obs	
			Summative Rpt	

<b>XX</b>				
Summative Rpt			Formal Obs	
			Summative Rpt	

<b>XX</b>				
Summative Rpt			Formal Obs	
			Summative Rpt	

<b>XX</b>				
Summative Rpt			Formal Obs	
			Summative Rpt	

<b>XX</b>				
Summative Rpt			Formal Obs	
			Summative Rpt	

<b>XX</b>				
Summative Rpt			Formal Obs	
			Summative Rpt	

<b>XX</b>				
Summative Rpt			Formal Obs	
			Summative Rpt	

PHASE II			PHASE III	
			XX	
Summative Rpt			Formal Obs	
			Summative Rpt	
			XX	
Summative Rpt			Formal Obs	
			Summative Rpt	

			XX	
Summative Rpt			Formal Obs	
			Summative Rpt	

			XX	
Summative Rpt			Formal Obs	
			Summative Rpt	

			XX	
Summative Rpt			Formal Obs	
			Summative Rpt	

**CEDAR CANYON**  
**BETTY SMITH - Principal**  
**PROBATIONARY**

NAME	BLDG	EVALUATOR	POSITION	PROBATIONARY		PHASE I	
Rounds, Amanda	CC	B. SMITH	SPED Teach	XX			
				1st Formal Obs		Summative Rpt	
				2nd Formal Obs			
				Summative Rpt			

Smith, Allison	CC	B. SMITH	Teacher - 2	XX			
				1st Formal Obs		Summative Rpt	
				2nd Formal Obs			
				Summative Rpt			

**PHASE I - Cedar Canyon**

NAME	BLDG	EVALUATOR	POSITION	PROBATIONARY		PHASE I	
Barney, Ver	CC	B. SMITH	Teacher - PE/			XX	
				1st Formal Obs		Summative Rpt	
				2nd Formal Obs			
				Summative Rpt			

Foos, Kendra	CC	B. SMITH	Teacher - 2nd			XX	
				1st Formal Obs		Summative Rpt	3/27/2012
				hire date 8/13/2008	2nd Formal Obs		
					Summative Rpt		

Funk, Stanna	CC	B. SMITH	Teacher - 5 & 6			XX	
				1st Formal Obs		Summative Rpt	3/22/2012
				hire date 8/13/2008	2nd Formal Obs		
					Summative Rpt		

Land, Judy	CC	B. SMITH	Teacher - K			XX	
				1st Formal Obs		Summative Rpt	3/29/12
				hire date 8/15/1986	2nd Formal Obs		
					Summative Rpt		

McAndrew,	CC	B. SMITH	Media Spec			XX	
				1st Formal Obs		Summative Rpt	
				2nd Formal Obs			

Summative Rpt		
---------------	--	--

Taedter, Co	CC	B. SMITH	Teacher - M			XX	Summative Rpt	
				1st Formal Obs				
				2nd Formal Obs				
				Summative Rpt				

Wobig, Ruth	CC	B. SMITH	Teacher - 4th & 5th			XX	Summative Rpt	3/29/12
				1st Formal Obs				
				2nd Formal Obs				
				Summative Rpt				
hire date 8/15/1990								

Zeiler, Monty	CC	B. SMITH	Teacher - 3 & 4			XX	Summative Rpt	3/27/2012
				1st Formal Obs				
				2nd Formal Obs				
				Summative Rpt				
hire date 8/13/2008								

PHASE ii - Cedar Canyon

Beatty, Peg	CC	B. SMITH	Teacher - 1st				Summative Rpt	
				1st Formal Obs				
				2nd Formal Obs				
				Summative Rpt				
hire date 8/15/1973								

**CLASSIFIED - CEDAR CANYON**

NAME	BLDG	EVALUATOR	POSITION	8-WEEK EVAL	ANNUAL EVAL	HIRE DATE
Bays, John	CC	B. SMITH	Para Educator		2/1/12	8/18/09
Brown, Lisa	CC	B. SMITH	Secretary			
Kiesel, Susan	CC	B. SMITH	Para Educator	goals 11/2/11	2/1/12	8/16/2011
Kuxhausen, Michelle	CC	B. SMITH	Para Educator	goals 11/7/11	1/31/12	8/29/2011
Parker, Rebecca	CC	B. SMITH	Para Educator		1/31/12	8/18/2008
Reinpold, Robin	CC	B. SMITH	Para Educator		2/3/12	8/22/07
Taylor, Tiffanie	CC	B. SMITH	Para Educator		2/2/12	6/1/2002

<b>PHASE II</b>			<b>PHASE III</b>	
-----------------	--	--	------------------	--

Summative Rpt			Formal Obs	
			Summative Rpt	

Summative Rpt			Formal Obs	
			Summative Rpt	

<b>PHASE II</b>			<b>PHASE III</b>	
Summative Rpt			Formal Obs	
			Summative Rpt	
			TA Plan	

Summative Rpt			Formal Obs	
			Summative Rpt	

Summative Rpt			Formal Obs	
			Summative Rpt	

Summative Rpt			Formal Obs	
			Summative Rpt	
Summative Rpt			Formal Obs	
			Summative Rpt	

--	--	--	--

Summative Rpt			Formal Obs	
			Summative Rpt	

Summative Rpt			Formal Obs	
			Summative Rpt	

Summative Rpt			Formal Obs	
			Summative Rpt	

<b>XX</b>				
Summative Rpt	3/23/2012		Formal Obs	
			Summative Rpt	

**JUNIOR HIGH SCHOOL**

**DORA OLIVARES**

**PROBATIONARY - JUNIOR HIGH**

NAME	BLDG	EVALUATOR	POSITION	PROBATIONARY		PHASE I	
Broderick, Michael	JH	OLIVARES	Social Studies	XX		Summative Rpt	
				1st Formal Ob	10/7/10		
				2nd Formal Ob	11/9/11		
hired 8/13/2008				Summative Rpt			

Cobos, Richard	JH	OLIVARES	Math Teacher	XX		Summative Rpt	
				1st Formal Ob	11/29/11		
				2nd Formal Ob	3/22/12		
hired 8/11/2010				Summative Rpt			

Gowin, Melanie	JH	OLIVARES	English Teacher	XX		Summative Rpt	
				1st Formal Ob	12/12/11		
				2nd Formal Ob	3/1/12		
hired 8/11/2010				Summative Rpt			

Gross, Amy	JH	OLIVARES	Resource Teacher	XX		Summative Rpt	
				1st Formal Obs			
				2nd Formal Ob	10/20/11		
hired 8/13/2008				Summative Rpt			

Hadenfeldt, Amanda	JH	OLIVARES	Math Teacher	XX		Summative Rpt	
				1st Formal Ob	11/23/11		
				2nd Formal Ob	2/24/12		
hired 8/11/2010				Summative Rpt			

Palser, Cryst	JH	OLIVARES	Computer S	XX		Summative Rpt	
				1st Formal Ob	9/24/10		
				2nd Formal Obs			
				Summative Rpt			

Prochazka, NJH	JH	OLIVARES	Band	XX		Summative Rpt	
				1st Formal Obs			
				2nd Formal Obs			
				Summative Rpt			

NAME	BLDG	EVALUATOR	POSITION	PROBATIONARY		PHASE I	
				XX			

Propp, Amar	JH	OLIVARES	Math	1st Formal Obs	9/21/10	Summative Rpt	
				2nd Formal Obs			
				Summative Rpt			

Treffer, Ben	JH	OLIVARES	Social Studi	XX			
				1st Formal Obs	10/1/10	Summative Rpt	
				2nd Formal Obs			
				Summative Rpt			

**PHASE I - JUNIOR HIGH**

NAME	BLDG	EVALUATOR	POSITION	PROBATIONARY		PHASE I	
Hartwig, Mic	JH	OLIVARES	PE			XX	
				1st Formal Obs		Summative Rpt	
				2nd Formal Obs			
				Summative Rpt			

Kleager, Mar	JH	OLIVARES	Social Studi			XX	
				1st Formal Obs		Summative Rpt	
				2nd Formal Obs			
				Summative Rpt			

Raines, Ran	JH	KNOTT	Band			XX	
				1st Formal Obs		Summative Rpt	
				2nd Formal Obs			
				Summative Rpt			

Richter, Chu	JH	OLIVARES	Industrial Te			XX	
				1st Formal Obs		Summative Rpt	
				2nd Formal Obs			
				Summative Rpt			

Zitterkopf, Ja	JH	KNOTT	Fam. Con. S			XX	
				1st Formal Obs		Summative Rpt	
				2nd Formal Obs			
				Summative Rpt			

**PHASE II - JR HIGH**

NAME	BLDG	EVALUATOR	POSITION	PROBATIONARY		PHASE I	
Keller, Kristi	JH	OLIVARES	7/8 Science Teacher				
hired 8/25/1986				1st Formal Obs		Summative Rpt	
				2nd Formal Obs			
				Summative Rpt			

--	--	--	--	--	--	--	--

Jenkins, Nat	JH	HAUN	HAL	1st Formal Obs	Summative Rpt	
				2nd Formal Obs		
				Summative Rpt		

Siebke, Julie	JH	OLIVARES	Counselor	1st Formal Obs	Summative Rpt	
				2nd Formal Obs		
				Summative Rpt		

**PHASE III - JR HIGH**

NAME	BLDG	EVALUATOR	POSITION	PROBATIONARY	PHASE I	
Anderson, Ja	JH	OLIVARES	Science	1st Formal Obs	Summative Rpt	
				2nd Formal Obs		
				Summative Rpt		

Couch, Scott	JH	KNOTT	Art	1st Formal Obs	Summative Rpt	
				2nd Formal Obs		
				Summative Rpt		

Mathews, Ja	JH	OLIVARES	Resource	1st Formal Obs	Summative Rpt	
				2nd Formal Obs		
				Summative Rpt		

NAME	BLDG	EVALUATOR	POSITION	PROBATIONARY	PHASE I	
Osborn, Bria	JH	OLIVARES	English	1st Formal Obs	Summative Rpt	S
				2nd Formal Obs		
				Summative Rpt		

Russell, Mel	JH	OLIVARES	Math	1st Formal Obs	Summative Rpt	
				2nd Formal Obs		
				Summative Rpt		

Sharp, Judy	JH	OLIVARES	PE	1st Formal Obs	Summative Rpt	
				2nd Formal Obs		
				Summative Rpt		

Smith, Yvon	JH	OLIVARES	English	1st Formal Obs	Summative Rpt	
-------------	----	----------	---------	----------------	---------------	--

2nd Formal Obs		
Summative Rpt		

Van Dyke, Julie	JH	OLIVARES	7/8th Science Teacher			Summative Rpt	
				1st Formal Obs			
hired 8/20/1984				2nd Formal Obs			
				Summative Rpt			

**CLASSIFIED - JUNIOR I**

NAME	BLDG	EVALUATOR	POSITION	8-WEEK EVAL	ANNUAL EVAL
Fulk, Alisa	JH	OLIVARES	Secretary		
Gingrich, De	JH	OLIVARES	Instructional Para		
Hinojosa, Fre	JH	OLIVARES	Custodian		
Kaufman, Su	JH	OLIVARES	Secretary		
Torres, Glori	JH	OLIVARES	Custodian		
Yarwood, De	JH	OLIVARES	SPED Aide		

PHASE II			PHASE III	
Summative Rpt			Formal Obs	
			Summative Rpt	

Summative Rpt			Formal Obs	
			Summative Rpt	

Summative Rpt			Formal Obs	
			Summative Rpt	

Summative Rpt			Formal Obs	
			Summative Rpt	

Summative Rpt			Formal Obs	
			Summative Rpt	

Summative Rpt			Formal Obs	
			Summative Rpt	

Summative Rpt			Formal Obs	
			Summative Rpt	

PHASE II			PHASE III	

Summative Rpt		Formal Obs	
		Summative Rpt	

Summative Rpt		Formal Obs	
		Summative Rpt	

<b>PHASE II</b>			<b>PHASE III</b>	
Summative Rpt			Formal Obs	
			Summative Rpt	

Summative Rpt			Formal Obs	
			Summative Rpt	

Summative Rpt			Formal Obs	
			Summative Rpt	

Summative Rpt			Formal Obs	
			Summative Rpt	

Formal Eval			Formal Obs	
			Summative Rpt	

<b>PHASE II</b>			<b>PHASE III</b>	
			XX	
Summative Rpt			Formal Obs	2/2/2012
			Summative Rpt	

XX				
----	--	--	--	--

Summative Rpt			Formal Obs	
			Summative Rpt	

XX				
Summative Rpt			Formal Obs	
			Summative Rpt	

<b>PHASE II</b>			<b>PHASE III</b>	
			XX	
Summative Rpt			Formal Obs	
			Summative Rpt	

			XX	
Summative Rpt			Formal Obs	
			Summative Rpt	

			XX	
Summative Rpt			Formal Obs	
			Summative Rpt	

<b>PHASE II</b>			<b>PHASE III</b>	
			XX	
Summative Rpt			Formal Obs	
			Summative Rpt	

			XX	
Summative Rpt			Formal Obs	
			Summative Rpt	

			XX	
Summative Rpt			Formal Obs	
			Summative Rpt	

			XX	
Summative Rpt			Formal Obs	

			Summative Rpt

			XX	
Summative Rpt			Formal Obs	1/25/2012
			Summative Rpt	

**FRESHMAN ACADEMY**

**KRAIG WEYRICH - Assistant Principal**

**CERTIFIED - PROBATIONARY**

NAME	BLDG	EVALUATOR	POSITION	PROBATIONARY		PHASE I
------	------	-----------	----------	--------------	--	---------

**PHASE I - Freshman Academy**

NAME	BLDG	EVALUATOR	POSITION	PROBATIONARY		PHASE I
------	------	-----------	----------	--------------	--	---------

Rhodes, Jimmie	SH	WEYRICH	Physical Ed			XX	
				1st Formal Obs		Summative Rpt	
				hire date	2nd Formal Obs		
				Summative Rpt			

Sulu, Pedro	SH	WEYRICH	Foreign Lang.			XX	
				1st Formal Obs		Summative Rpt	
				hire date	2nd Formal Obs		
				Summative Rpt			

**PHASE II**

NAME	BLDG	EVALUATOR	POSITION	PROBATIONARY		PHASE I
------	------	-----------	----------	--------------	--	---------

Helgerson, Lane	SH	WEYRICH	English				
				1st Formal Obs		Summative Rpt	
				hire date	2nd Formal Obs		
				Summative Rpt			

Hadenfeldt, Lisa	F/A	WEYRICH	English				
				1st Formal Obs		Summative Rpt	
				hire date	2nd Formal Obs		
				Summative Rpt			

Green, Pat	F/A	WEYRICH	Computers				
				1st Formal Obs		Summative Rpt	
				hire date	2nd Formal Obs		
				Summative Rpt	graslie		

Smith, Gary	F/A	WEYRICH	Math				
				1st Formal Obs		Summative Rpt	
				hire date	2nd Formal Obs		
				Summative Rpt			

Trautman, Jill	SH	WEYRICH	Special Education				
				1st Formal Obs			Summative Rpt
				hire date	2nd Formal Obs		
				Summative Rpt			

**PHASE III**

NAME	BLDG	EVALUATOR	POSITION	PROBATIONARY		PHASE I	
Busby, Kim	F/A	WEYRICH	Math Teacher				
				1st Formal Obs			Summative Rpt
				hire date	2nd Formal Obs		
				Summative Rpt			

Coon, Diane	F/A	WEYRICH	Science Teacher				
				1st Formal Obs			Summative Rpt
				hire date	2nd Formal Obs		
				Summative Rpt			

**CLASSIFIED - FRESHMAN ACADEMY**

NAME	BLDG	EVALUATOR	POSITION	8-WEEK EVAL	ANNUAL EVAL	Hire Date
Blanco, Phyllis	F/A	Weyrich	Secretary		11/8/11 3/15/12	3/23/98
DeOllos, Fred	F/A	Weyrich	Custodian		2/27/12	1/6/97
Montague, Linda	F/A	Weyrich	Media Para Educator		1/23/12	10/11/06
Reichert, Sara	F/A	Weyrich	Resource Para Educator	10/13/2011	1/23/12	9/2/11
Smith, Janna	F/A	Weyrich	Para Educator	12/1/2011	1/17/12	10/18/11
Stanek, Brenda	F/A	Weyrich	GAP/ISS Coordinator	10/12/2011	1/16/2012	8/18/2011

	<b>PHASE II</b>		<b>PHASE III</b>
--	-----------------	--	------------------

	<b>PHASE II</b>		<b>PHASE III</b>
--	-----------------	--	------------------

	Summative Rpt				Formal Obs	
					Summative Rpt	

	Summative Rpt				Formal Obs	
					Summative Rpt	

	<b>PHASE II</b>		<b>PHASE III</b>			
	<b>XX</b>					
	Summative Rpt				Formal Obs	
					Summative Rpt	

	<b>XX</b>					
	Summative Rpt				Formal Obs	
					Summative Rpt	

	<b>XX</b>					
	Summative Rpt				Formal Obs	
					Summative Rpt	

	<b>XX</b>					
	Summative Rpt				Formal Obs	
					Summative Rpt	

	<b>XX</b>			
	Summative Rpt			Formal Obs
				Summative Rpt

	<b>PHASE II</b>			<b>PHASE III</b>	
				<b>XX</b>	
	Summative Rpt			Formal Obs	11/2/11
				Summative Rpt	

				<b>XX</b>	
	Summative Rpt			Formal Obs	11/10/11
				Summative Rpt	

**SENIOR HIGH SCHOOL**  
**ELDON HUBBARD, PRINCIPAL**  
**CERTIFIED STAFF**

NAME	BLDG	EVALUATOR	POSITION	PHASE	ANNUAL EVAL	Hire Date
Weyrich, Kraig	FA	HUBBARD	Asst. Principal	12/20/2011		8/1/2011
Pauli, David	SH	HUBBARD	Activities Director		12/21/11	8/1/2011
Seiler, Shawn	SH	HUBBARD	Asst. Principal		12/20/11	8/1/2009

**PROBATIONARY - SR HIGH**

NAME	BLDG	EVALUATOR	POSITION	PROBATIONARY		PHASE I			
Arevalo, Sheri	SH	HUBBARD	Biology Instructor	XX		Summative Rpt			
				1st Formal Obs	12/20/2011 not signed				
				hired 8/12/2011				2nd Formal Obs	3/26/12
								Summative Rpt	
Behrens, JJ	SH	HUBBARD	Resource Teacher	XX		Summative Rpt			
				1st Formal Obs	12/6/11				
				hired 8/12/2011				2nd Formal Obs	3/30/12
								Summative Rpt	
Boggs, Annie	SH	HUBBARD	Media Specialist	XX		Summative Rpt			
				1st Formal Obs	12/21/11				
				hired 8/11/2010				2nd Formal Obs	
								Summative Rpt	
Hughes, Randy	SH	SEILER	Science Teacher	XX		Summative Rpt			
				1st Formal Obs	10/24/11				
				hired 8/17/2009				2nd Formal Obs	3/14/12
								Summative Rpt	
Johnson, Pearl	SH	SEILER	SCIENCE Teacher	XX		Summative Rpt			
				1st Formal Obs	11/22/11				
				hire date 8/12/2011				2nd Formal Obs	3/26/12
								Summative Rpt	
Lashley, David	SH	HUBBARD	Guidance Counselor	XX		Summative Rpt			
				1st Formal Obs	12/6/11				
				hired 8/11/2010				2nd Formal Obs	3/30/12

				Summative Rpt				
Pittman, Jace	SH	HUBBARD	12 College Comp	XX		Summative Rpt		
				1st Formal Obs	12/6/11			
				hired 8/11/2010	2nd Formal Ob		3/28/12	
				Summative Rpt				

**PHASE I - SR. HIGH**

NAME	BLDG	EVALUATOR	POSITION	PROBATIONARY		PHASE I	
Bishop, Mark	SH	HUBBARD	Industrial Tech			XX	
				1st Formal Obs		Summative Rpt	
				hire date	2nd Formal Obs		
				Summative Rpt			

Brittan, Ligia	SH	SEILER	Foreign Language			XX	
				1st Formal Obs		Summative Rpt	
				hire date	2nd Formal Obs		
				Summative Rpt			

Clark, Justin	F/A	WEYRICH	Social Studies			XX	
				1st Formal Obs		Summative Rpt	
				hire date	2nd Formal Obs		
				Summative Rpt			

Couch, Scott	F/A	WEYRICH	Art Teacher			XX	
				1st Formal Obs		Summative Rpt	
				hire date	2nd Formal Obs		
				Summative Rpt			

DeMaranville, Jason	SH	SEILER	Social Studies			XX	
			1st Formal Obs		Summative Rpt		
			hire date	Social Studies	2nd Formal Obs		
				Summative Rpt			

Ediger, Patti	SH	SEILER	Special Education			XX	
				1st Formal Obs		Summative Rpt	
				hire date	2nd Formal Obs		
				Summative Rpt			

Johnson, Randy	SH	SEILER	Science			XX	
				1st Formal Obs		Summative Rpt	
				hire date		2nd Formal Obs	
		Summative Rpt					

Land, Steve	F/A	WEYRICH	Industrial Tech			XX	
				1st Formal Obs		Summative Rpt	
				hire date		2nd Formal Obs	
		Summative Rpt					

Marez, Rick	F/A	HUBBARD	FA Counselor			XX	
				1st Formal Obs		Summative Rpt	
				hire date		2nd Formal Obs	
		Summative Rpt					

Palser, Crystal	FA / JH	OLIVARES	Computers			XX	
				1st Formal Obs		Summative Rpt	
				hire date		2nd Formal Obs	
		Summative Rpt					

Parker, Laurie	SH	HUBBARD	Math			XX	
				1st Formal Obs		Summative Rpt	
				hire date		2nd Formal Obs	
		Summative Rpt					

Plummer, Randy	SH	HUBBARD	Busines			XX	
				1st Formal Obs		Summative Rpt	
				hire date		2nd Formal Obs	
		Summative Rpt					

Schultz, Janelle	SH	SEILER	English			XX	
				1st Formal Obs		Summative Rpt	
				hire date		2nd Formal Obs	
		Summative Rpt					

Stoltenberg , Joy	SH	SEILER	Special Education			XX	
				1st Formal Obs		Summative Rpt	
				hire date		2nd Formal Obs	
		Summative Rpt					



North, Paul	F/A	SEILER	Social Studies	1st Formal Obs	Summative Rpt		
hire date				2nd Formal Obs			
				Summative Rpt			

Raines, Randy	SH /FA/JH	HUBBARD	Instrumental Music	1st Formal Obs	Summative Rpt		
hire date				2nd Formal Obs			
				Summative Rpt			

Salomon, Matt	SH	SEILER	Social Studies	1st Formal Obs	Summative Rpt		
hire date				2nd Formal Obs			
				Summative Rpt			

Stobel, Andy	SH	HUBBARD	Foreign Lang.	1st Formal Obs	Summative Rpt		
hire date				2nd Formal Obs			
				Summative Rpt			

Sweeney, Lisa	SH	SEILER	PE	1st Formal Obs	Summative Rpt		
hire date				2nd Formal Obs			
				Summative Rpt			

Vohland, Angie	SH	SEILER	Foreign Language	1st Formal Obs	Summative Rpt		
hire date				2nd Formal Obs			
				Summative Rpt			

Zitterkopf, Jan	SH / FA	OLIVARES	Fam. Con. Science	1st Formal Obs	Summative Rpt		
hire date				2nd Formal Obs			
				Summative Rpt			

**PHASE III**

NAME	BLDG	EVALUATOR	POSITION	PROBATIONARY	PHASE I		
Anderson, Bob	SH	SEILER	Industrial Tech	1st Formal Obs	Summative Rpt		
hire date				2nd Formal Obs			
				Summative Rpt			



Radzyski, Tammy	SH	Hubbard	Secretary	12/8/11		8/5/2002
Raines, Deb	SH	SEILER	Study Hall Para	12/6/11		9/2/1997
Roland, Sha	SH	SEILER	Secretary			
Roque, Ulysses	SH	SEILER	Career Coach Para	11/8/11	12/6/11	8/29/2011
Rowlee, Shelley	HS	SEILER	SPED Para	12/6/11		9/1/1997
Schadwinkel, Robin	HS	Boggs	Media Para	12/8/11		8/15/1988

PHASE II			PHASE III	
Summative Rpt			Formal Obs	
			Summative Rpt	

Summative Rpt			Formal Obs	
			Summative Rpt	

Summative Rpt			Formal Obs	
			Summative Rpt	

Summative Rpt			Formal Obs	
			Summative Rpt	

Summative Rpt			Formal Obs	
			Summative Rpt	

Summative Rpt			Formal Obs	
			Summative Rpt	

--	--	--	--	--

Summative Rpt			Formal Obs	
			Summative Rpt	

PHASE II			PHASE III	
Summative Rpt			Formal Obs	
			Summative Rpt	

Summative Rpt			Formal Obs	
			Summative Rpt	

Summative Rpt			Formal Obs	
			Summative Rpt	

Summative Rpt			Formal Obs	
			Summative Rpt	

Summative Rpt			Formal Obs	
			Summative Rpt	

Summative Rpt			Formal Obs	
			Summative Rpt	

Summative Rpt			Formal Obs	
			Summative Rpt	

Summative Rpt			Formal Obs	
			Summative Rpt	

Summative Rpt			Formal Obs	
			Summative Rpt	

Summative Rpt			Formal Obs	
			Summative Rpt	

Summative Rpt			Formal Obs	
			Summative Rpt	

Summative Rpt			Formal Obs	
			Summative Rpt	

Summative Rpt			Formal Obs	
			Summative Rpt	

Summative Rpt			Formal Obs	
			Summative Rpt	

Summative Rpt			Formal Obs	
			Summative Rpt	

<b>PHASE II</b>		<b>PHASE III</b>
-----------------	--	------------------

<b>XX</b>				
Summative Rpt			Formal Obs	
			Summative Rpt	

<b>XX</b>				
Summative Rpt			Formal Obs	
			Summative Rpt	

<b>XX</b>				
Summative Rpt			Formal Obs	
			Summative Rpt	

<b>XX</b>				
Summative Rpt			Formal Obs	
			Summative Rpt	

<b>XX</b>				
Summative Rpt			Formal Obs	
			Summative Rpt	

<b>XX</b>				
Summative Rpt			Formal Obs	
			Summative Rpt	

<b>XX</b>				
-----------	--	--	--	--

Summative Rpt		Formal Obs	
		Summative Rpt	

<b>XX</b>			
Summative Rpt		Formal Obs	
		Summative Rpt	

<b>XX</b>			
Summative Rpt		Formal Obs	
		Summative Rpt	

<b>XX</b>			
Summative Rpt		Formal Obs	
		Summative Rpt	

<b>XX</b>			
Summative Rpt		Formal Obs	
		Summative Rpt	

<b>XX</b>			
Summative Rpt		Formal Obs	
		Summative Rpt	

<b>XX</b>			
Summative Rpt		Formal Obs	
		Summative Rpt	

<b>PHASE II</b>		<b>PHASE III</b>	
		<b>XX</b>	
Summative Rpt		Formal Obs	
		Summative Rpt	

			XX	
Summative Rpt			Formal Obs	
			Summative Rpt	

			XX	
Summative Rpt			Formal Obs	
			Summative Rpt	

			XX	
Summative Rpt			Formal Obs	
			Summative Rpt	

			XX	
Summative Rpt			Formal Obs	
			Summative Rpt	

			XX	
Summative Rpt			Formal Obs	
			Summative Rpt	

			XX	
Summative Rpt			Formal Obs	1/25/12
			Summative Rpt	

**COACH PERFORMANCE EVALUATIONS 2010-2011**

<b>NAME</b>	<b>BLDG</b>	<b>EVALUATOR</b>	<b>HEAD COACH POSITION</b>	<b>ANNUAL EVAL</b>
Barker, Caleigh	FA/SH	O'Boyle	Girl's Cross Country	
Barker, Caleigh	FA/SH	O'Boyle	Girl's Track	
Bonuchi, Molly	SH	O'Boyle	Girl's Softball	
Clark, Justin	SH	O'Boyle	Boy's Soccer	
Hamer, Russ	SH	O'Boyle	Boy's Golf	
Hartwig, Mick	SH	O'Boyle	Girl's Golf	
Land, Steve	SH	O'Boyle	Girl's Basketball	
Marez, Rick	JH/SH	O'Boyle	Boy's Cross Country	
Oboyle, Tom	SH	Hubbard	Varsity Football	
Plummer, Randy	SH	O'Boyle	Boy's Varsity Basketball	
Plummer, Randy	FA/SH	O'Boyle	Boy's Track	
Rhodes, Jimmie	SH	O'Boyle	Varsity Wrestling	
Schadwinkel, Craig	SH	O'Boyle	Varsity Volleyball	
Sweeney, Lisa	SH	O'Boyle	Girl's Soccer	



Dept. ↓	October	November	December	January	February	March	April	May	June	July	August	September
Sr. & Jr High Principals						XX						X
Information Technology			X					XX				

X: Indicates informal review of job responsibilities, establish annual improvement goals (if necessary)

XX: Indicates a formal written review.

If personnel requires additional evaluations, they will be done as necessary throughout their work year.

We will still do the two formal evaluations on new classified personnel as stated in policy.

LETTERHEAD

March 30, 2012

NSBA Superintendent Search Service  
Attn: Marcia Herring, Director  
1311 Stockwell Street  
Lincoln, NE 68502

McPherson & Jacobson, LLC  
7905 L St., Suite 310  
Omaha, NE 68127

You have been identified as an executive recruitment and development service specializing in executive searches for public entities.

Gering Public Schools is in the process of contracting a Superintendent Search Service to provide assistance from start to finish in our search for a District Superintendent for the 2013-2014 school year.

We are seeking an agency that can ensure a search protocol offering flexibility to our board, while allowing our board to focus on selecting the individual who will provide the leadership the district is seeking.

We would like to conduct a process that is collaborative, highly-professional and one that will attract the very best applicants.

If you are interested, the Gering Public Schools District will be accepting 30 minute presentations during our July 16, 2012 Regular Board Meeting. Please contact Lisa Frahm at 308-436-3125 if you would like to be included on our agenda.

Thank you in advance for your consideration,

Don Hague  
Superintendent  
Gering Public Schools