

Board of Education Regular Meeting  
Monday, December 12, 2011 8:00 PM Central

Boardroom  
P.O. Box 187  
Utica, NE 68456-0187

Mike Hahn: Present  
Wayne Heine: Present  
Larry Paxson: Present  
Julie Sorensen: Present  
Mike Tomes: Present  
Doug Tonniges: Present  
Present: 6.

## 1. MEETING CALL TO ORDER

### 1. Reading of Public Meeting Notice

#### 1. Open Meetings Act

### 2. Roll Call

### 3. Consent Agenda

Motion to approve the consent agenda Passed with a motion by Wayne Heine and a second by Julie Sorensen.

Mike Hahn: Yea, Wayne Heine: Yea, Larry Paxson: Yea, Julie Sorensen: Yea, Mike Tomes: Yea, Doug Tonniges: Yea

Yea: 6, Nay: 0

#### 1. Additions/Deletions and Agenda Approval

#### 2. Consider Minutes of Previous Meeting(s) and Their Approval

#### 3. Consider Current Bills and Their Approval

#### 4. Consider Activity Accounts and Treasurer's Report

### 4. Introduction of Guests; Invite Comments

## 2. OLD BUSINESS

## 3. NEW BUSINESS

### 1. FFA PRESENTATION

### 2. RECEIVE INFORMATION ON THE SPECIAL EDUCATION PROGRAM

### 3. RECEIVE INFORMATION ON THE SUMMER SCHOOL PROGRAM

#### 4. RECEIVE CONVENTION REPORTS

#### 5. CONSIDERATION OF SUPERINTENDENT'S CONTRACT

Motion to approve rolling over Mr. DeWaard's contract through 2013-14 Passed with a motion by Larry Paxson and a second by Doug Tonniges.

Mike Hahn: Yea, Wayne Heine: Yea, Larry Paxson: Yea, Julie Sorensen: Yea, Mike Tomes: Yea, Doug Tonniges: Yea

Yea: 6, Nay: 0

#### 6. CONSIDER APPROVAL OF POLICY - KINDERGARTEN EARLY

##### ADMITTANCE

Motion to approve Policy #502.11 - Kindergarten Early Admittance Passed with a motion by Wayne Heine and a second by Julie Sorensen.

Mike Hahn: Yea, Wayne Heine: Yea, Larry Paxson: Yea, Julie Sorensen: Yea, Mike Tomes: Yea, Doug Tonniges: Yea

Yea: 6, Nay: 0

#### 7. ADMINISTRATOR'S REPORTS

#### 8. SUPERINTENDENT'S EVALUATION

#### 4. ADJOURN

# CENTENNIAL PUBLIC SCHOOL

1301 Centennial Avenue  
P.O. Box 187  
Utica, NE 68456-0187  
402-534-2321  
FAX 402-534-2291

Tim DeWaard  
Superintendent  
402-534-2291

Colin Bargaen  
Secondary Principal

Dean Davis  
Activities Director

Mark Murphy  
Elementary Principal

Bob Fish  
Counselor

Barbara Heckathorn  
Special Services

## CENTENNIAL BOARD OF EDUCATION REGULAR MEETING November 14, 2011

Notice of meeting was published in York News Times on October 21, 2011.

Meeting was called to order at 8:00 p.m. with four board members present. Administrators present were Mr. DeWaard, Mr. Murphy, Mr. Bargaen, and Dr. Heckathorn. Guests were Kelli Pankoke and Keaton Kucera.

Motion made by Paxson, seconded by Hahn, to approve the consent agenda. Members polled: Hahn, for; Heine, absent; Paxson, for; Sorensen, for; Tomes, for; Tonniges, absent. Motion carried 4-0.

The board excused the absence of Wayne Heine and Doug Tonniges.

The 2010-2011 Audit Report was handed out and accepted by the board.

Discussion held to finalize travel plans for NASB/NASA State Conference on Wednesday, November 16 in Omaha.

Motion made by Paxson, seconded by Sorensen, to approve the proposal from Falcon Heating and Air Conditioning to repair and replace the HVAC units as presented. Members polled: Hahn, for; Heine, absent; Paxson, for; Sorensen, for; Tomes, for; Tonniges, absent. Motion carried 4-0.

Motion made by Hahn, seconded by Sorensen, to approve the proposal to distribute EHA Premium Holiday savings to administrative staff and Mr. Tesar. Members polled: Hahn, for; Heine, absent; Paxson, for; Sorensen, for; Tomes, for; Tonniges, absent. Motion carried 4-0.

Motion made by Hahn, seconded by Paxson, to approve late starts on February 15<sup>th</sup> and April 20<sup>th</sup> for professional development. Members polled: Hahn, for; Heine, absent, Paxson, for; Sorensen, for; Tomes, for; Tonniges, absent. Motion carried 4-0.

First reading of Kindergarten Early Admittance Policy.

Motion made by Sorensen, seconded by Hahn, to approve requesting bids to replace the HVAC system in the gym. Members polled: Hahn, for; Heine, absent, Paxson, for; Sorensen, for; Tomes, for; Tonniges, absent. Motion carried 4-0.

Discussion held on the Board of Education self-evaluation.

Heard Administrator reports.

Meeting adjourned at 9:07 p.m.

Mike Hahn, Secretary  
Centennial Board of Education

MH:mr

## Board Report for Newspaper

DECEMBER 2011

<u>Vendor Name</u>	<u>Vendor Description</u>	<u>Amount</u>
ACT CAREER PLANNING SERVICES	ASSESSMENT TESTS	405.00
ADVANCED OFFICE AUTO	SUPPLIES/RISOGRAPH	215.23
AMAZON.COM	TEXTBOOKS	658.48
AMSAN	SUPPLIES	282.86
APPLE	SUPPLIES	15,202.00
ARAMARK	SUPPLIES	160.64
BEAVER HARDWARE	PARTS	129.95
BOLLWITT, SUSAN	REBURSEMENT	50.00
CDW GOVERNMENT, INC	SUPPLIES	2,425.70
CENTENNIAL ACTIVITY FUND	DISTRICT REIMBURSEMENT	1,487.08
CLAMCAM VIDEO	COMPUTER SOFTWARE	592.00
COLIN ELECTRIC MOTOR SERVICE, INC	SUPPLIES	611.81
CORNHUSKER INT. TRUCKS INC	EQUIP/MAIN	1,084.63
COURTYARD BY MARRIOTT	STAFF TRAVEL	1,562.00
CULLIGAN OF CRETE	SUPPLIES	172.20
DEPARTMENT OF MOTOR VEHICLES	DRIVING COURSE	3.00
ESU #6	CONTRACTED SERVICES/SUPPLIES	2,072.08
FEHLHAFFER'S INC	PARTS/MAINTENANCE	25.33
GRAINGER	SUPPLIES	52.80
GRAND ISLAND PHYSICAL THERAPY	PHYSICAL THERAPY	14,199.40
HENRY, SHANNON	CONTRACTED SERVICES	7,910.77
HEWLETT-PACKARD COMPANY	HARDWARE	1,537.60
HIRERIGHT SOLUTIONS INC	PHYSICAL/TESTING	27.15
HSBC BUSINESS SOLUTIONS	SUPPLIES	93.21
J.W. PEPPER & SON, INC	SHEET MUSIC	54.00
JAYMAR BUSINESS FORMS INC	SUPPLIES	94.85
KONICA MINOLTA	SERVICES	706.71
KONICA MINOLTA BUSINESS SOLUTIONS	EQUIP MAIN	2,084.84
KRALIK'S SEW & VAC CENTER	REPAIRS	160.00
LINCOLN CLUTCH & BRAKE	PARTS	121.90
MACRO SYSTEM	COMPUTER EQUIP	283.00
MATHESON TRI-GAS INC	SUPPLIES	134.54
MCGRAW-HILL COMPANIES	TEXTBOOKS	46.85
MEAD LUMBER - YORK	SUPPLIES	193.76
MEYER LABORATORY, INC	SUPPLIES	1,738.32
MID-PLAINS ELECTRIC, INC	EQUIPMENT	1,996.65
MIERAU & CO., PC	FEES/AUDIT	2,900.00
MILLER SEED & SUPPLY	SUPPLIES	572.93
MURPHY, MARK	REIMBURSEMENT	720.95
NABER'S LOCKSMITH SERV	REPAIRS/SUPPLIES	56.10
NE COUNCIL OF SCHOOL ADMIN	FEES	450.00
NEBRASKA AIR FILTER, INC	FILTERS	1,010.54
NEBRASKA SAFETY CENTER @ UNK	OTHER EXP	225.00
NEBRASKA STATE PATROL	OTHER EXP	15.00
NEBRASKA/CENTRAL EQUIPMENT, INC	SUPPLIES	151.96

**Board Report for Newspaper**

DECEMBER 2011

<u>Vendor Name</u>	<u>Vendor Description</u>	<u>Amount</u>	
NICOLAUS, MYRA		52.74	
O'REILLY AUTOMOTIVE INC	PARTS	347.18	
PAC N SAVE	SUPPLIES	762.82	
PAUL TOMS, ED.D	SAFETY REVIEW	227.21	
PAYFLEX	FEES	168.30	
POCKET FULL OF THERAPY	SUPPLIES	20.50	
PRESTO-X CO	EXT FEE	91.00	
QUANTUM	SUPPLIES	895.00	
QUILL CORPORATION	SUPPLIES/EQUIP	696.55	
SEWARD COUNTY PPD	ELECTRICITY	5,819.56	
SOFTWARE UNLIMITED INC	SUPPLIES/FEES	100.00	
SOURCEGAS	FUEL	6,117.21	
STECKLY, JO	REIMBURSEMENT	11.00	
STUHR MUSEUM EDUCATION DEPT	FEES	189.00	
TEACHING STRATEGIES	TEXTBOOKS	89.90	
TESAR, DANIEL	REIMBURSEMENT	51.06	
UNITED FARMERS COOPERATIVE	FUEL	9,731.35	
UTICA PARTS & SERVICE	REPAIRS	118.06	
VILLAGE OF UTICA	WATER/SEWER	1,148.21	
VITAL SUPPORT SYSTEMS	SOFTWARE	1,166.44	
VOLZKE CORP	SUPPLIES	60.32	
WALMART COMMUNITY	SUPPLIES	100.43	
WINDSTREAM	TELEPHONE	327.58	
WORKS COMPUTING, INC	SOFTWARE	733.72	
YORK PUBLIC SCHOOLS	TUITION	33.64	
ZANER-BLOSER	TEXTBOOKS/SUPPLIES	59.95	
			<b>Fund Total: 93,797.55</b>
			<b>Checking Account Total: 93,797.55</b>

Qualified Cap Fund

Cornerstone Bank      \$240,236.25

Depreciation Fund

Siemens      \$13,997.00

CENTENNIAL ELEMENTARY ACTIVITY ACCOUNT

Nov-11

ACCOUNT	Oct-11 BALANCE	RECEIPTS	DISBURSEMENTS	Nov-11 BALANCE
BOOKS	\$268.10	\$651.50	\$725.00	\$194.60
BOXTOPS	\$4,079.67		\$42.20	\$4,037.47
PICTURES	\$1,461.67			\$1,461.67
GENERAL	\$1,579.06	\$2,742.85	\$2,421.23	\$1,900.68
READING CLASSIC				
TOTAL	\$7,388.50	\$3,394.35	\$3,188.43	\$7,594.42

Elementary Activity Bank Balance: \$7,759.42

Outstanding Checks: \$165.00

Balance: \$7,594.42

Elementary Activity Savings Account \$2,929.62

Interest on Activity Savings Account \$1.85

Other

Total in Savings: \$2,931.47

November 30, 2011

	Nov. 1 Balance	Received	Expenditures	Dec. 1 Balance
ART	\$139.09			\$139.09
ATHLETICS	\$10,098.88	\$2,538.00	\$3,561.64	\$9,075.04
BAND TRIP	\$5,408.45			\$5,408.45
BOYS BASKETBALL	-\$9.43	\$4,635.00	\$598.40	\$4,027.17
BRONCO STORE	-\$3,161.04	\$1,673.36	\$660.00	-\$2,147.68
C CLUB	\$419.02			\$419.02
CLASS '14	\$0.00	\$7,616.00	\$4,941.14	\$2,674.86
CLASS '11	\$118.84			\$118.84
CLASS '12	\$450.76	\$479.00	\$616.05	\$313.71
CLASS '13	\$4,967.72			\$4,967.72
CONCESSIONS	\$18,449.82	\$852.70	\$2,356.09	\$16,946.43
CONC. MAN.	\$786.40	\$88.02		\$874.42
CROSS COUNTRY	\$30.40			\$30.40
DANCE TEAM	\$578.11			\$578.11
DIST. EVENTS	\$8,012.94		\$2,813.98	\$5,198.96
DRAMA	\$7,448.17		\$1,153.14	\$6,295.03
FBLA	\$205.61			\$205.61
FCA	-\$39.95			-\$39.95
FCCLA	\$807.89	\$99.00	\$194.35	\$712.54
FOOTBALL	\$168.70	\$3,574.00	\$195.86	\$3,546.84
FFA	-\$1,928.33	\$9,325.44	\$3,079.42	\$4,317.69
GENERAL	\$8,749.33	\$58,417.53	\$58,822.34	\$8,344.52
GIRLS BASKETBALL	\$660.48	\$915.00		\$1,575.48
INSTR.	\$898.27	\$258.25	\$259.95	\$896.57
JH YEARBOOK	\$334.20	\$90.00	\$60.00	\$364.20
LIBRARY	-\$28.46	\$86.89		\$58.43
MAT GIRL	\$661.87			\$661.87
NAT. HONOR	\$40.10			\$40.10
ONE ACT	-\$25.54			-\$25.54
SCIENCE	\$390.81			\$390.81
SHOP/TECH	\$1,124.68	\$95.00		\$1,219.68
SHOW CHOIR	\$120.88	\$582.20	\$15.40	\$687.68
SOFTBALL	\$464.94			\$464.94
SPANISH CLUB	\$693.53	\$3,046.00	\$1,743.00	\$1,996.53
SPEECH	\$55.26			\$55.26
ST. COUN.	\$2,801.12	\$975.80	\$612.71	\$3,164.21
STUDENT FEES	\$0.00			\$0.00
TRACK	\$151.68			\$151.68
VOCAL	-\$2,298.89		\$1,343.76	-\$3,642.65
VOLLEYBALL	\$48.87		\$58.04	-\$9.17
WRESTLING	\$279.12			\$279.12
WT. ROOM	\$92.66			\$92.66
YEARBOOK	-\$6,182.71	\$546.95		-\$5,635.76
	\$61,984.05	\$95,894.14	\$83,085.27	\$74,792.92
CENTENNIAL BANK BALANCE				\$79,243.99
OUTSTANDING CHECKS				\$4,451.07
OUTSTANDING DEPOSITS				
		Total		\$79,243.99

Year To Date

	Sept. 1, 2010 Balance	Received	Expenditures	YTD Balance
ART	\$139.09	\$0.00	\$0.00	\$139.09
ATHLETICS	-\$2,892.97	\$32,917.98	\$20,949.97	\$9,075.04
BAND TRIP	\$5,120.45	\$288.00	\$0.00	\$5,408.45
BOYS BASKETBALL	\$40.57	\$4,635.00	\$648.40	\$4,027.17
BRONCO STORE	-\$3,090.05	\$4,190.61	\$3,248.24	-\$2,147.68
C CLUB	\$419.02	\$0.00	\$0.00	\$419.02
CLASS '14	\$0.00	\$7,616.00	\$4,941.14	\$2,674.86
CLASS '11	\$118.84	\$0.00	\$0.00	\$118.84
CLASS '12	\$450.76	\$479.00	\$616.05	\$313.71
CLASS '13	\$4,914.80	\$52.92	\$0.00	\$4,967.72
CONCESSIONS	\$19,321.62	\$14,526.90	\$16,902.09	\$16,946.43
CONC. MAN,	\$0.00	\$874.42	\$0.00	\$874.42
CROSS COUNTRY	\$11.83	\$395.50	\$376.93	\$30.40
DANCE TEAM	\$578.11	\$0.00	\$0.00	\$578.11
DIST. EVENTS	\$3,862.94	\$4,499.00	\$3,162.98	\$5,198.96
DRAMA	\$7,528.44	\$0.00	\$1,233.41	\$6,295.03
FBLA	-\$438.58	\$1,191.19	\$547.00	\$205.61
FCA	-\$39.95	\$0.00	\$0.00	-\$39.95
FCCLA	\$486.94	\$734.93	\$509.33	\$712.54
FOOTBALL	\$6,619.69	\$3,594.00	\$6,666.85	\$3,546.84
FFA	\$107.36	\$18,107.78	\$13,897.45	\$4,317.69
GENERAL	\$10,337.77	\$176,171.53	\$178,164.78	\$8,344.52
GIRLS BASKETBALL	-\$14.52	\$1,590.00	\$0.00	\$1,575.48
INSTR.	\$135.77	\$2,133.89	\$1,373.09	\$896.57
JH YEARBOOK	\$20.00	\$504.20	\$160.00	\$364.20
LIBRARY	\$58.43	\$86.89	\$86.89	\$58.43
MAT GIRL	\$255.71	\$406.16	\$0.00	\$661.87
NAT. HONOR	\$40.10	\$0.00	\$0.00	\$40.10
ONE ACT	-\$25.54	\$0.00	\$0.00	-\$25.54
SCIENCE	\$390.81	\$0.00	\$0.00	\$390.81
SHOP/TECH	\$1,124.68	\$95.00	\$0.00	\$1,219.68
SHOW CHOIR	-\$305.46	\$1,259.24	\$266.10	\$687.68
SOFTBALL	\$2,413.66	\$36.00	\$1,984.72	\$464.94
SPANISH CLUB	\$298.00	\$3,441.53	\$1,743.00	\$1,996.53
SPEECH	\$55.26	\$0.00	\$0.00	\$55.26
ST. COUN.	\$4,426.85	\$2,544.90	\$3,807.54	\$3,164.21
STUDENT FEES	\$0.00	\$0.00	\$0.00	\$0.00
TRACK	\$151.68	\$0.00	\$0.00	\$151.68
VOCAL	\$139.22	\$1,314.81	\$5,096.68	-\$3,642.65
VOLLEYBALL	\$2,225.03	\$438.78	\$2,672.98	-\$9.17
WRESTLING	\$279.12	\$0.00	\$0.00	\$279.12
WT. ROOM	\$92.66	\$0.00	\$0.00	\$92.66
YEARBOOK	-\$9,357.95	\$4,176.79	\$454.60	-\$5,635.76
	\$56,000.19	\$288,302.95	\$269,510.22	\$74,792.92
			Total	\$74,792.92

December 2011  
November 2011 Statement

**CENTENNIAL PUBLIC SCHOOL INVESTMENTS**

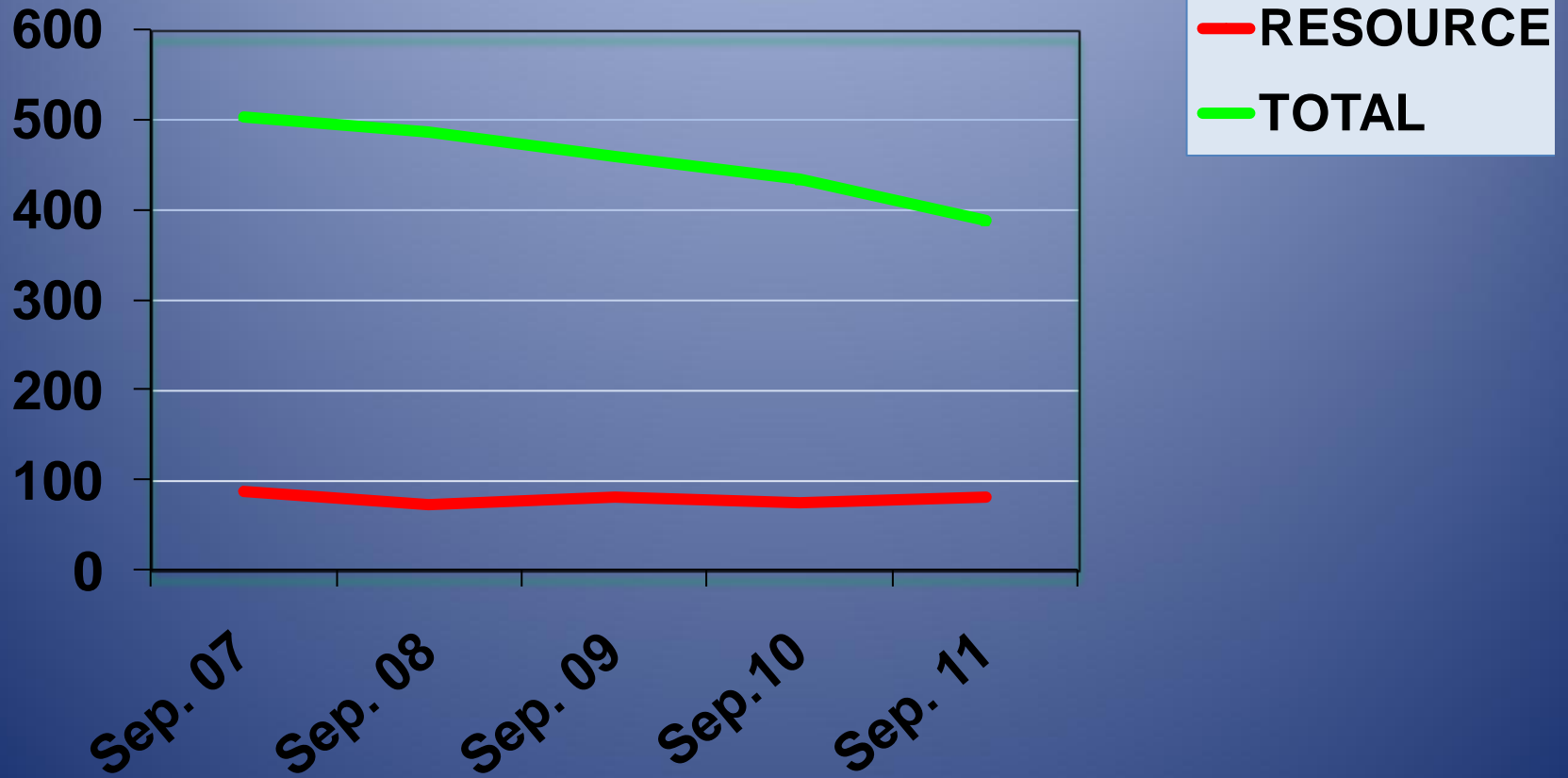
FUND	BANK	TYPE OF INVESTMENT	INT. RATE	AMOUNT	INT. REC
Lunch Fund	First Bank of Utica	Checking 180000		<u>\$5,959.95</u>	
			Total	\$5,959.95	
Depreciation Fund	Farmers & Merchants	MMA 436 949		\$131,206.93	\$35.04
			Total	\$131,206.93	
Unemployment Ins.	Cornerstone Bank Cornerstone Bank	Certificate 57537 MMA 81190		\$55,879.49 <u>\$371.08</u>	
			Total	\$56,250.57	
Building Fund	First Bank of Utica	Checking 18 064 6 Qualified Cap Bond 180554		\$415,609.86 \$250,078.61	\$268.75 \$153.64
			Total	\$665,688.47	
General Fund	Farmers & Merchants Farmers & Merchants Farmers & Merchants First Bank of Utica First Bank of Utica Cornerstone Bank Cornerstone Bank Cornerstone Bank Cornerstone Bank York State, Gresham York State, Gresham York State, Gresham First Bank of Utica	MMA 436 436 CD 71455 24mo CD 79277 11/02/2011 MMA 18 065 3 General Acct CD16282 MMA 300079871 CD 16634 24mo CD 20074 48 mo 12-01-13 MMA 1027291 CD 5204 CD 5215 PayFlex Acct		\$92,070.21 \$118,195.61 \$118,393.19 \$102,156.75 \$119,790.80 \$55,995.36 \$126,114.38 \$124,120.30 \$55,180.83 \$184,158.69 \$125,742.54 \$12,841.60	\$24.59 \$2,390.86 \$62.93 \$331.21 \$17.34 \$506.56 \$722.97 \$13.38
	First Bank of Utica	Checking 180505		\$921,174.09	\$484.90
			Total	\$1,234,760.26	\$4,069.84
		Total Invested All Accounts Combined		<u>\$3,015,040.27</u>	

Total amount invested at Farmers & Merchants ..... \$459,865.94  
 Total amount invested at First Bank of Utica ..... \$1,827,611.66  
 Total amount invested at Cornerstone Bank, Waco ..... \$362,480.61  
 Total amount invested at York State, Gresham ..... \$365,082.06  
 Total Invested \$3,015,040.27

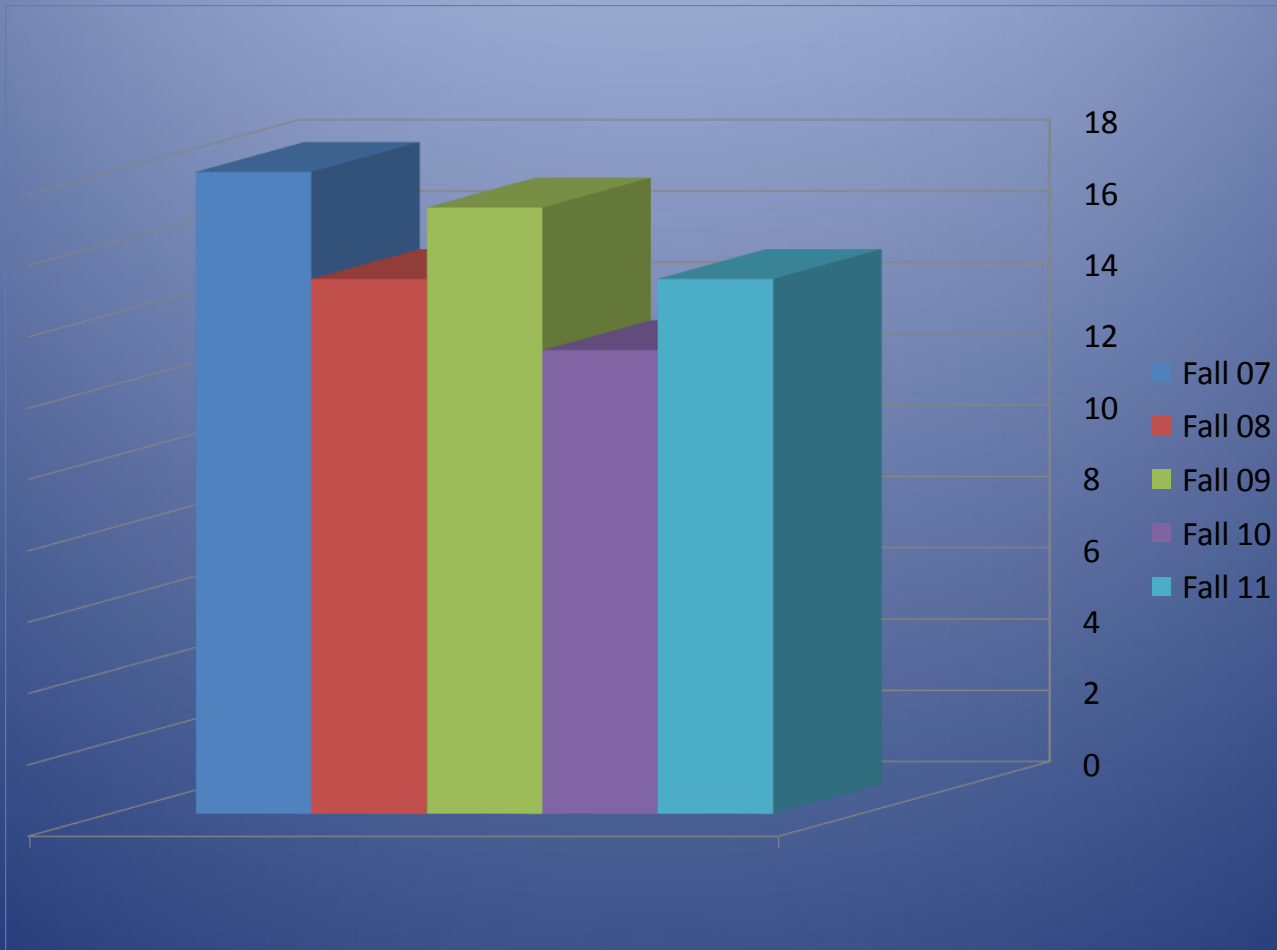
# CENTENNIAL PUBLIC SCHOOL

SPECIAL EDUCATION REPORT  
DECEMBER 2011

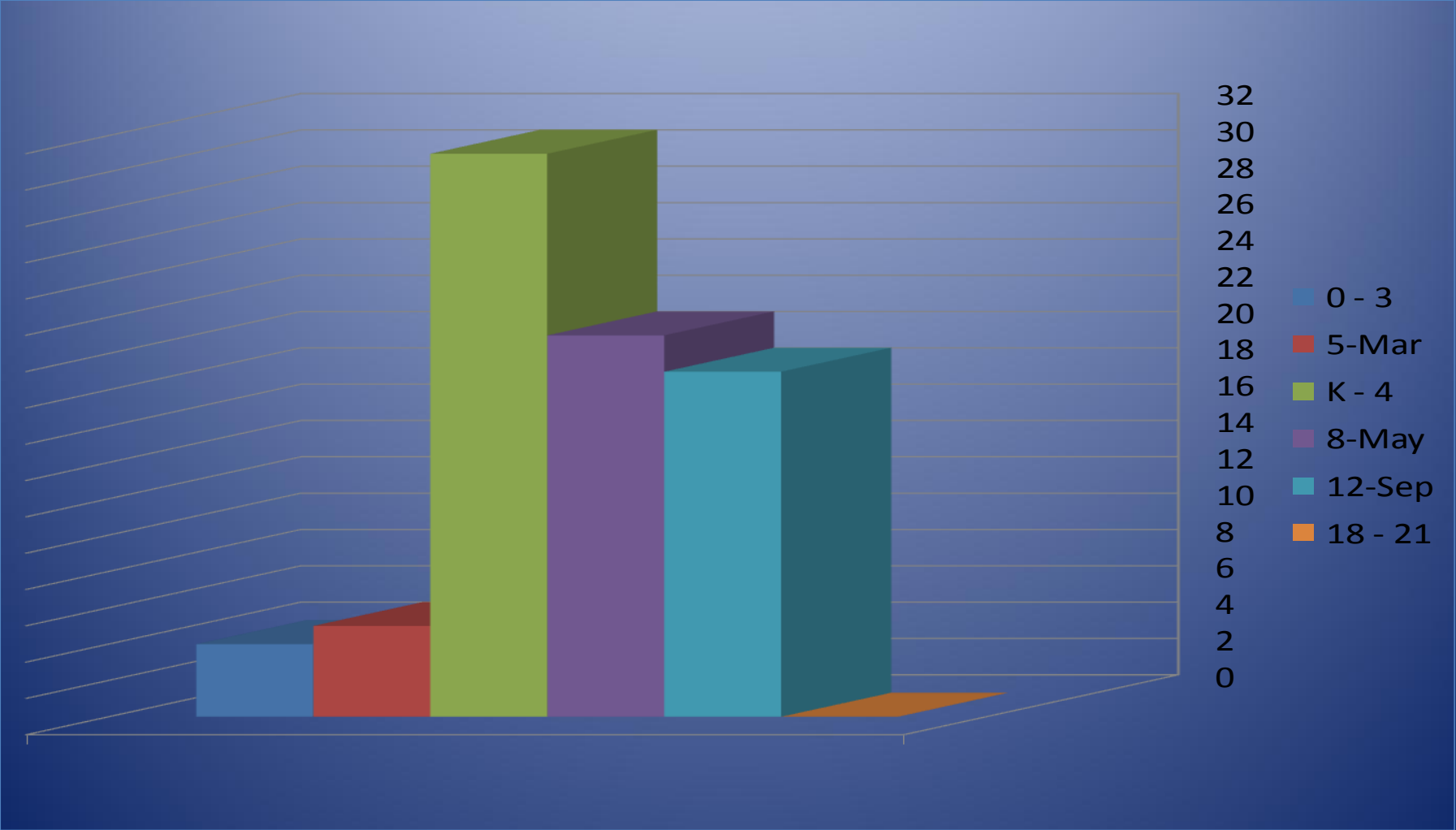
# POPULATION TREND



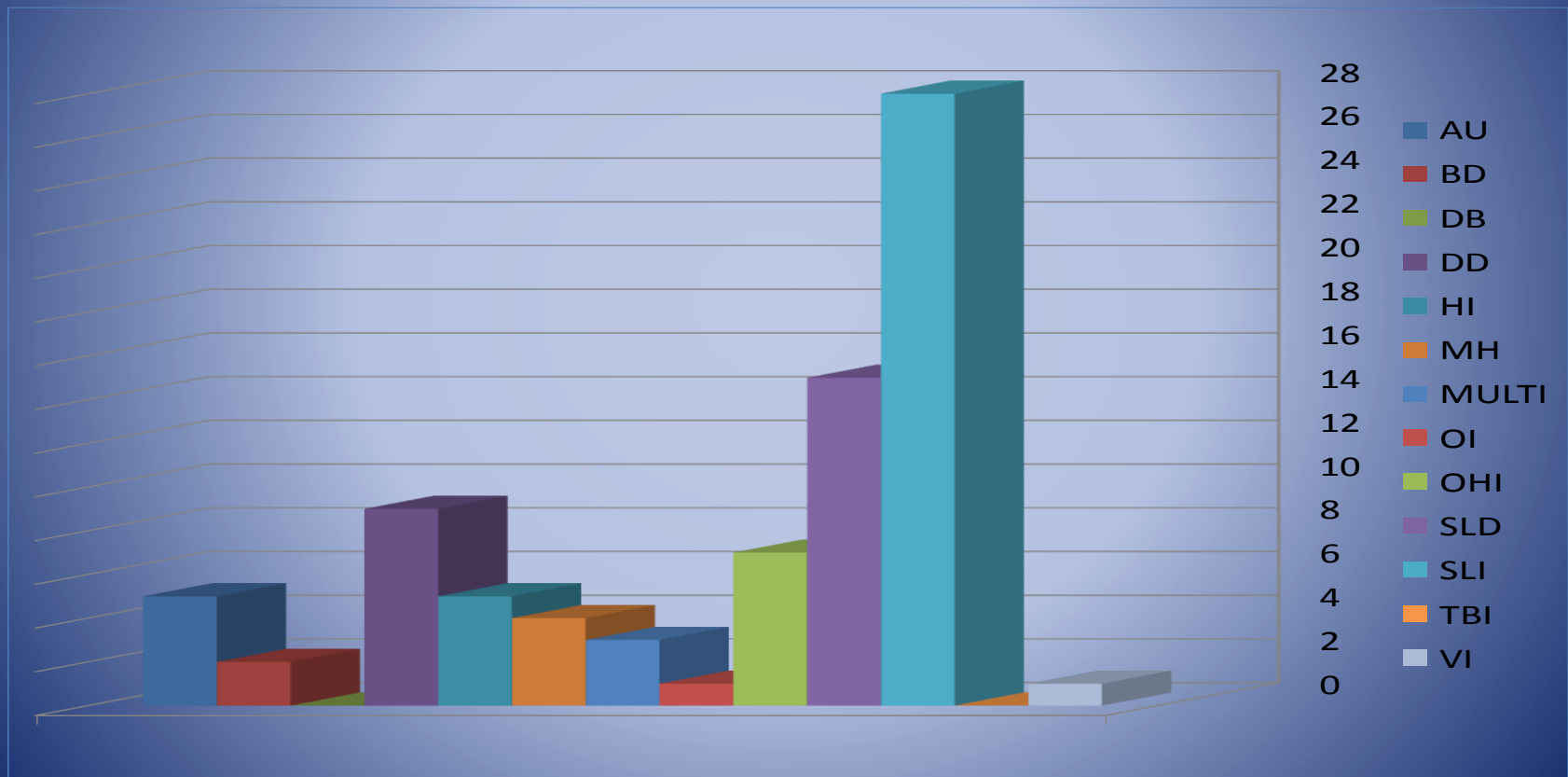
# PERCENT OF TOTAL POPULATION



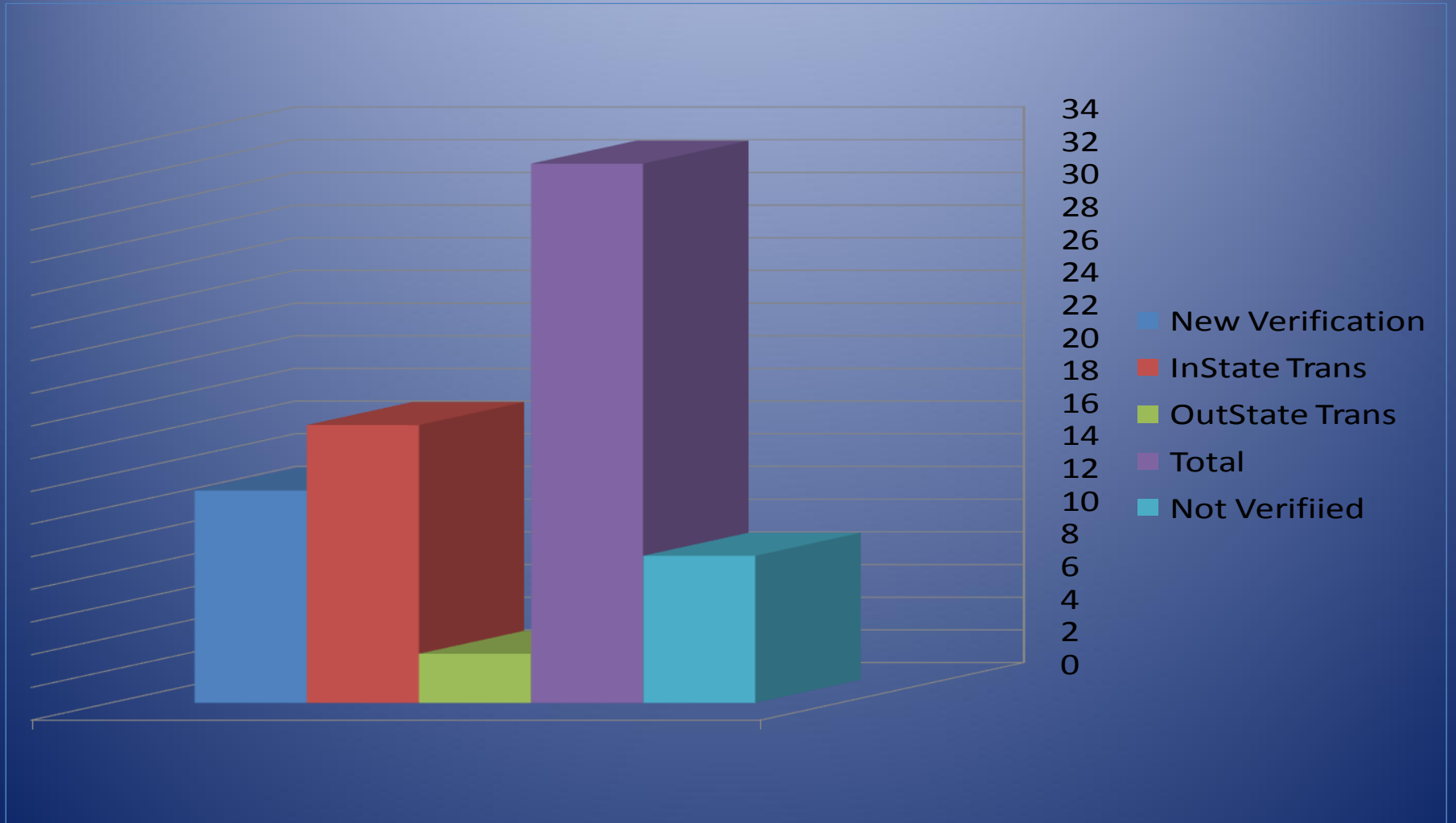
# DISTRIBUTION BY AGE/GRADE



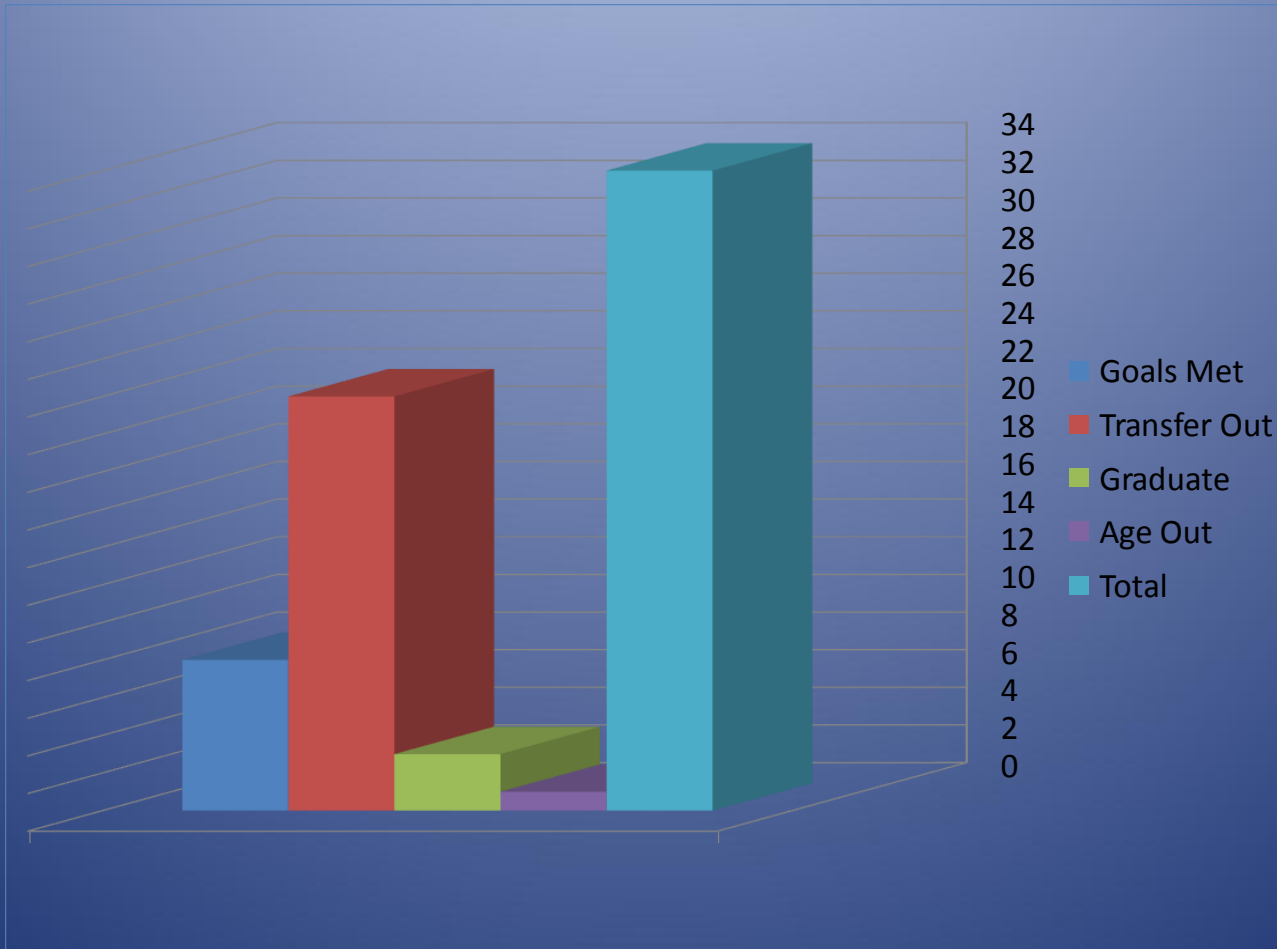
# Number by Verification



# STUDENTS ENTERING 10 - 11



# STUDENTS EXITING




# MISCELLANEOUS

06 – 07 (88)	07 – 08 (82)	08- 09 (80)	09 – 10 (75)	10 - 11 (80)	
15	18	11	22	20	Move In
7	9	13	18	22	Move Out
22	24	20	35	31	Undup Students
51	48	38	51	49	MDTs
116	97	98	104	103	IEPs/IFSPs
0	0	0	0	0	Manifest. Hearings

# CENTENNIAL PUBLIC SCHOOL

COMMUNITIES FOR A BRIGHTER  
TOMORROW



Summer School Report  
To the Board of Education  
December, 2011



# PLAN

Serve 30 elementary students who were identified as “At Risk” of falling behind grade level in reading as identified by DIBELS and teachers



# Goals

- Intense teaching/learning of skills during summer school
- Retention of skills into the fall term
- Decrease the number of students who are “Deficit” as measured by DIBELS



# PARTICIPANTS IDENTIFIED AS “AT RISK”

- Kindergarten– 5 of 7 invited
- First Grade – 4 of 8 invited
- Second Grade – 6 of 6 invited
- Third Grade – 3 of 6 invited
- Fourth Grade – 4 of 6 invited
- Fifth Grade – 2 of 5 invited
- Total K- 5 = 38 invited
- K- 5 = 24 attending
- Sixth Grade – 1 of 6 invited
- Total 25 of 44 attended

# K – 5 Summer Students

Gain	<b>16</b>
Loss	<b>7</b>
No Change	<b>1</b>
Average Change	<b>+ 9.63</b>

## EARLY KINDERGARTEN ENTRANCE

Commencing in the 2012-13 school year, a child must be five years of age as of July 31 of the year of entry into kindergarten. The School District may admit a child to kindergarten who will reach age of five years on or after August 1 and on or before October 15 of such school year if the parent or guardian requests such entrance and provides an affidavit stating that (i) the child attended kindergarten in another jurisdiction that would allow admission within the current year, (ii) the family anticipates relocation to another jurisdiction that would allow admission within the current year, or (iii) the child had demonstrated through the recognized assessment procedure outlined below and approved by the Board of Education that he or she is capable of carrying the work of kindergarten.

Early kindergarten enrollment exceptions may be made for younger children who are intellectually advanced. At a minimum, eligibility for the exception shall be based upon an analysis of the child's (1) mental ability, (2) emotional/social development, (3) pre-academic skills, and (4) fine motor skills.

The kindergarten early entrance assessment procedures are designed to identify and place those children in kindergarten who:

- a. Will turn 5 years of age between August 1 and October 15 (as verified by birth certificate);
- b. Are deemed by parents or guardians as being intellectually advanced and likely to benefit from advanced grade placement; and
- c. Are selected on the basis of testing by professionals trained and certified to administer the assessments that will produce evidence of strength in:
  1. Mental ability defined as scoring 84<sup>th</sup> percentile or above on a standardized assessment of cognitive ability such as the Wechsler Preschool and Primary Scale of Intelligence III, or the Stanford-Binet V,
  2. A test of emotional/social development such as the Behavior Assessment System for Children, Second Edition (BASC-2),
  3. 75<sup>th</sup> percentile or greater on a test of pre academic skills such as the Woodcock Johnson III, and
  4. A test of fine motor ability, scoring 75<sup>th</sup> percentile or above on a standardized measurement such as the Beery VMI.

The decision regarding early entrance to kindergarten requires careful consideration of all factors that affect kindergarten success with final determination to be made based on the recommendation of the District Evaluation Team. The academic, social, and emotional readiness, as well as the student's physical development and well-being, must be weighed

Approved \_\_\_\_\_ Reviewed \_\_\_\_\_ Revised \_\_\_\_\_

with institutional factors also considered. Sound decision making in the area of early entrance to kindergarten is dependent upon reliable information regarding a student's readiness and a thoughtful balancing of the myriad of factors implicated by the decision. Parents will be notified in writing of the results of the Early Kindergarten Entrance assessment and the determination of the District Evaluation Team in a timely fashion; not to exceed three weeks after the assessments are completed.

It is the presumption of the Board of Education that students will enter kindergarten at the age prescribed by state regulation. The Board of Education understands that students whose birth dates closely miss the cutoff date for school attendance may have educational needs or demonstrated capabilities that warrant early admission to kindergarten.

Families who seek early admission of their child into kindergarten must obtain an *Early Entrance to Kindergarten Packet* from the Elementary School Office located at 1301 Centennial Ave. Utica, NE 68456 or telephone (402) 534-2321.

Parents must fill out the early entrance application forms, which include a parent questionnaire and obtain and attach a reference letter from someone who is well acquainted with the child but not related to any family member. The person providing this reference should know the child well enough that they can speak with some expertise about the child's attributes and abilities. The reference letter should indicate whether this person recommends the child be schooled with children who will be a year older than he/she is; if yes, what evidence would this person provide about the child that speaks to his/her mental ability, pre-academic skills, fine motor ability, and emotional/social development.

Suggestions for this reference letter are a preschool teacher, a Sunday School teacher, a day-care provider, or a physician.

The assessment request, reference letter and parent questionnaire must be completed and returned to the District no later than May 25<sup>th</sup> of the spring before fall enrollment to allow summer assessment to be completed. Fees for the assessment are the responsibility of the child's family payable to the School District.

Decisions regarding early kindergarten entrance must include consideration of the above regardless of race, color, gender, religion, ancestry, national origin, marital status, age, disability, or sexual orientation of children or their families. Institutional factors, such as capacity, may also be considered.

Legal Reference:                      Neb. Statute 79-214

**Secondary Principal's Report  
December 12, 2011**

- 1. Fall ACT Data...**
- 2. Winter Sports Seasons Are Underway...**
- 3. Winter Concerts Right Around the Corner...**
- 4. One Act Competes At Conference & Districts...**
- 5. 1<sup>st</sup> Semester Positive Impact Awards on Thursday, 12/22...**

## SUPERINTENDENT'S REPORT

December 12, 2011

1. I will attend the Legislative Preview Conference on December 14<sup>th</sup>. It should be an interesting meeting, but I'm not expecting much change.
2. NASB will be hosting their Legislative Issues Conference on January 22<sup>nd</sup> and 23<sup>rd</sup> at the Cornhusker in Lincoln. If you are interested, please let me know.
3. I e-mailed the December edition of the NASB Monthly re: Minder for you.
4. Past Board Member Meeting - - - When do we want to do this?
5. The holiday season is coming fast. First, I would like to wish each of you and your families a Merry Christmas and a Happy New Year. Secondly, you are invited to come up to the school and enjoy some snacks on December 12<sup>th</sup>. The administrators will put out their yearly spread for the staff to enjoy.

## ELEMENTARY PRINCIPAL'S REPORT

December 12<sup>th</sup>, 2011

1. The end of the first semester is rapidly approaching. We have a few activities planned.....
2. The winter season activities are in full swing, even at the elementary level.....
3. The cold weather has brought home the reality that not all children/families are equipped to deal with such an extreme.....
4. The Backpack Program is at capacity once again this year and people/organizations in our communities continue to be extremely generous.