



**Morgan County Schools Special Called Board Meeting
April 24, 2024 5:00 PM
Morgan County Schools - Central Office**

MEMBERS PRESENT: Attendance Taken at 8:25 AM. Jonathan Dagley: Present, Tammy Howard: Absent, Ben Jackson: Present, Wade Summers: Present, Mickey Tucker: Present, Billy Ward: Present.

1. **Chairman - Call To Order**

2. **Public Comment**

3. **Bid for Football Bleachers at Sunbright School**

On a motion by Billy Ward and seconded by Mickey Tucker the Board voted to accept the bid from Toadvine for \$289,647.00 for football bleachers at Sunbright School. Motion carried.

Jonathan Dagley: Yea, Tammy Howard: Absent, Ben Jackson: Yea, Wade Summers: Yea, Mickey Tucker: Yea, Billy Ward: Yea
Yea: 5, Nay: 0, Absent: 1

4. **Bid for Football Bleachers at Wartburg Central High School**

On a motion by Jonathan Dagley and seconded by Billy Ward the Board voted to accept the bid from Toadvine for \$289,647.00 for football bleachers at Wartburg Central High School. Motion carried.

Jonathan Dagley: Yea, Tammy Howard: Absent, Ben Jackson: Yea, Wade Summers: Yea, Mickey Tucker: Yea, Billy Ward: Yea
Yea: 5, Nay: 0, Absent: 1

5. **Adjourn**

TOADVINE

SEATING • ATHLETIC EQUIPMENT • VIDEO SCOREBOARDS

P.O. Box 190 • Fisherville, KY 40023 • Phone: 502-241-6010 • 1-877-211-6925 • Fax: 502-241-2288 • www.toadvine.com

PROPOSAL

4-24-24

To: MORGAN COUNTY SCHOOLS - TENNESSEE

From: CHRIS TOADVINE

Job Name: WARTBURG HIGH SCHOOL & SUNBRIGHT HIGH SCHOOL

Job Location: WARTBURG, TN & SUNBRIGHT, TN

HOME FOOTBALL – (2) STADIUMS – ONE AT EACH SCHOOL

DANT CLAYTON ALUM-A-STAND GRANDSTAND. **BASIS OF DESIGN**

- 10 ROWS X 177' LONG
- SEATS: 1000
- 8" RISE PER ROW X 24" ROW SPACING
- 3" TUBE AND CHANNEL DESIGN – 10X STRONGER THAN WELDED ANGLE
- 40" ELEVATION AT FRONT WALKWAY
- FULLY CLOSED SLIP AND STAIN RESISTANT WALK SURFACES
- POWDER COATED RISER BOARDS.
- POWDER COATED RISER SKIRT BELOW FRONT WALKWAY
- ADA SEATING PER CODE
- ANODIZED BENCH SEATING
- BLACK VINYL CHAIN LINK ENCLOSURE AT ALL GUARD RAIL LOCATIONS
- INSTALLER MUST BE PROVIDED ACCESS DIRECTLY TO STAND FOR CRANES, FORKLIFTS ETC. TO COMPLETE INSTALLATION.

TOTAL MATERIALS DELIVERED AND INSTALLED PRICE

\$ 579,294.00

**This is provided both are ordered at the same time & same unit. \$289,647 each*

INCLUSIONS:

- FOUNDATION DESIGN
- INSTALLATION OF BLEACHERS

EXCLUSIONS:

- CONCRETE
- SITEWORK OF ANY KIND
- ANY REMOVAL OF EXISTING
- SURVEYS OR CONTROL POINTS – TO BE PROVIDED BY CM/OTHERS
- LOCAL PERMITS OR LICENSES TO BE BY GC/OWNER
- SEE ATTACHED PROJECT EXCLUSIONS PAGE

PRICES ARE GOOD FOR 30 DAYS

EXCLUSIONS & CLARIFICATIONS:

APPLICABLE UNLESS SPECIFICALLY CALLED OUT IN THE SCOPE ABOVE

CONTRACT ITEMS

1. Pay if paid terms
2. No damages for delay clauses
3. Liquidated and consequential damages
4. Accelerations or changes to our schedule without and equitable contract price adjustment
5. Unreasonable limitations on profit and overhead charges in connection with change orders
6. Builders Risk Insurance
7. Insurance limits exceeding, or other requirements beyond, the attached standard insurance certificate & endorsements.
8. Waiver of lien or bond rights prior to receiving payment

DESIGN AND CONSTRUCTION ITEMS

1. Demolition.
2. Temporary Access (roadways, bridges, matting, etc.)
3. Field Welding
4. Geotechnical Services.
5. Special Inspection Services.
6. Testing and Inspections Services.
7. Protection of our work from the work performed by others.
8. Obtaining building permits of any kind.
9. Services for early foundation design.
10. Services resulting from changes of scope, magnitude and timeline of the project as described.
11. Services resulting from corrections or revisions required because of errors or omissions in construction by the contractor or other subcontractors.
12. Shimming more than amount included in bid.
13. Shimming for work performed by others that is out of industry standard tolerance or tolerances noted on Toadvine Enterprises design documents.
14. Toadvine Enterprises will not be responsible for locating utilities, unless noted otherwise in our proposal. The owner/GC or CM is obligated to ensure that all utilities are properly marked and shown to Toadvine Enterprises prior to beginning of work. Toadvine Enterprises will not be responsible for unmarked, miss-marked, private, or otherwise unknown utilities.
15. BIM requirements
16. Design or construction of shoring and bracing for excavations and buildings or underpinning of adjacent structures.
17. Services required for investigating or making measured drawings of existing conditions or verification of drawings and information provided by the owner, CM/GC, architect or other third party.
18. Verification of field measurements after our design drawings have been approved.
19. Lightning protection or electrical grounding cables, unless noted otherwise in our proposal.
20. Composite clean-up crew participation.

TOADVINE

SEATING • ATHLETIC EQUIPMENT • VIDEO SCOREBOARDS

P.O. Box 190 • Fisherville, KY 40023 • Phone: 502-241-6010 • 1-877-211-6925 • Fax: 502-241-2288 • www.toadvine.com

21. Multiple cleaning iterations of installed materials
22. Dust control
23. Flagmen, street barriers, permits to close streets, etc.
24. Task lighting
25. Security of material, equipment, tools from theft.
26. Gutters, drip shields, drain bodies, drain connections or any other types of drainage items within or below the stadia system.
27. Drop panels, sub-roofs, or closure material at thresholds between our work and the work of others, not shown on the contract drawings.
28. Flashing, or other joint or closure material, at thresholds between our work and the work of others, not shown on the contract drawings.
29. Trim, closure, or other material necessary around the penetration of the building columns through the stadia / loge areas.
30. Vertical closure at egress stairs and/or ramps, below the tread support channels
31. Riser Closure / Skirting unless noted in scope of work.
32. Fencing below the grandstand unless noted in scope of work
33. Fencing or railing system not attached to stadia (unless specifically included in scope of work).
34. Embedded steel in concrete or other work provided by others.
35. Anchor bolt material or templates for work not specified by Toadvine Enterprises
36. Fire protection, firestopping or fire rating for any provided materials

FOUNDATION/CONCRETE ITEMS

1. Site Clearing
2. Over excavation of foundations.
3. Rock excavation.
4. Off-site removal of spoils.
5. Landscaping.
6. Storm drainage and culverts.
7. Gravel backfills.
8. Caulking.
9. Waterproofing.
10. Baseline layout.
11. Cold weather protection.
12. Epoxy rebar.
13. Geo grid.
14. Trench drains.
15. Electrical vaults.
16. Pipe supports and bollards.
17. Remediation for unsuitable soils. I.e... Flowable fill, etc.
18. Riprap and geotextile purchase and installation.
19. All pumping, diversion, dewatering of areas.
20. Concrete pumping due to poor site conditions.
21. Foundations or other concrete work.
22. Baseplate grouting.
23. Shoring for slabs on metal deck.

BID CLARIFICATIONS

1. Our proposal, in its entirety, is a required attachment to any agreement to any contract document

P.O. Box 190 • Fisherville, KY 40023 • Phone: 502-241-6010 • 1-877-211-6925 • Fax: 502-241-2288 • www.toadvine.com

TOADVINE

SEATING • ATHLETIC EQUIPMENT • VIDEO SCOREBOARDS

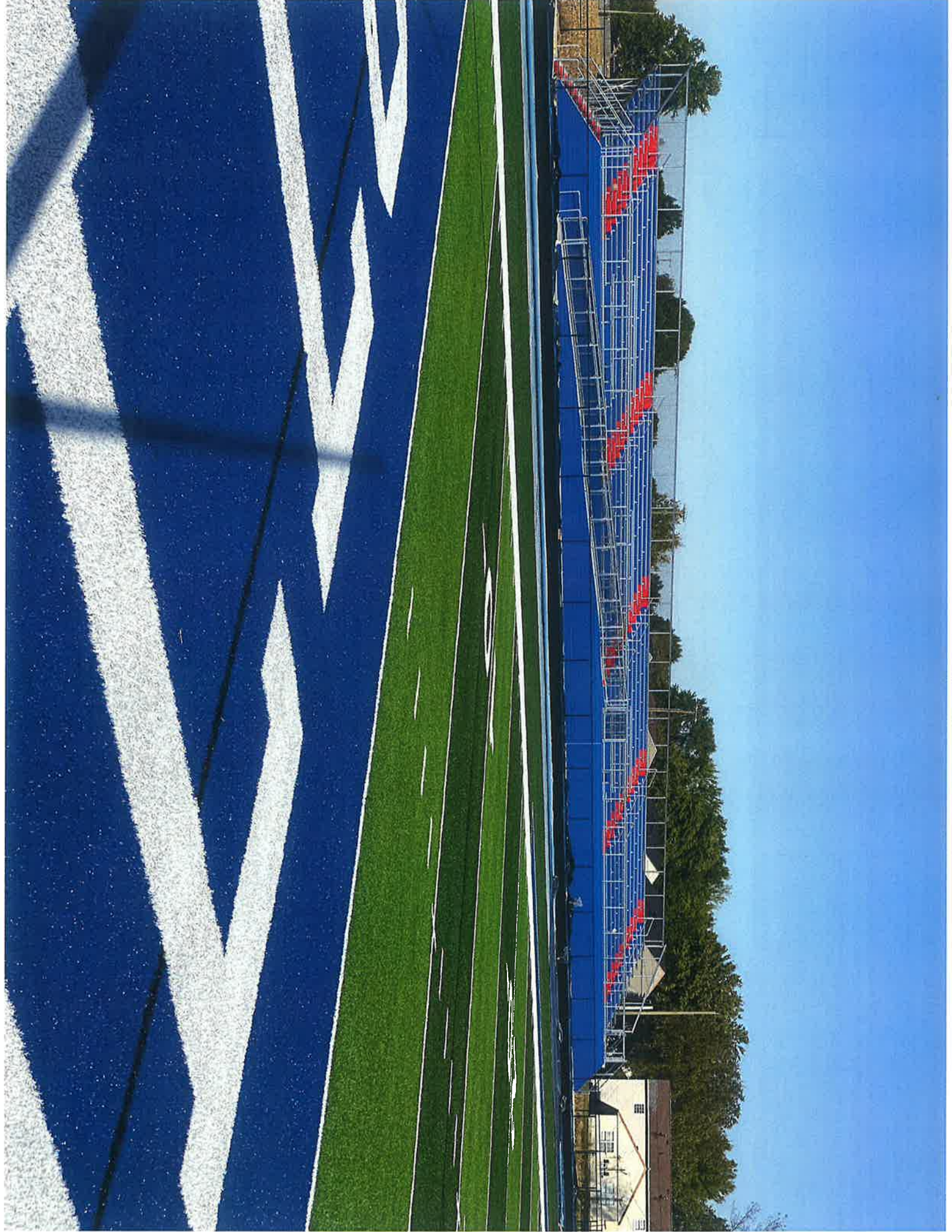
P.O. Box 190 • Fisherville, KY 40023 • Phone: 502-241-6010 • 1-877-211-6925 • Fax: 502-241-2288 • www.toadvine.com

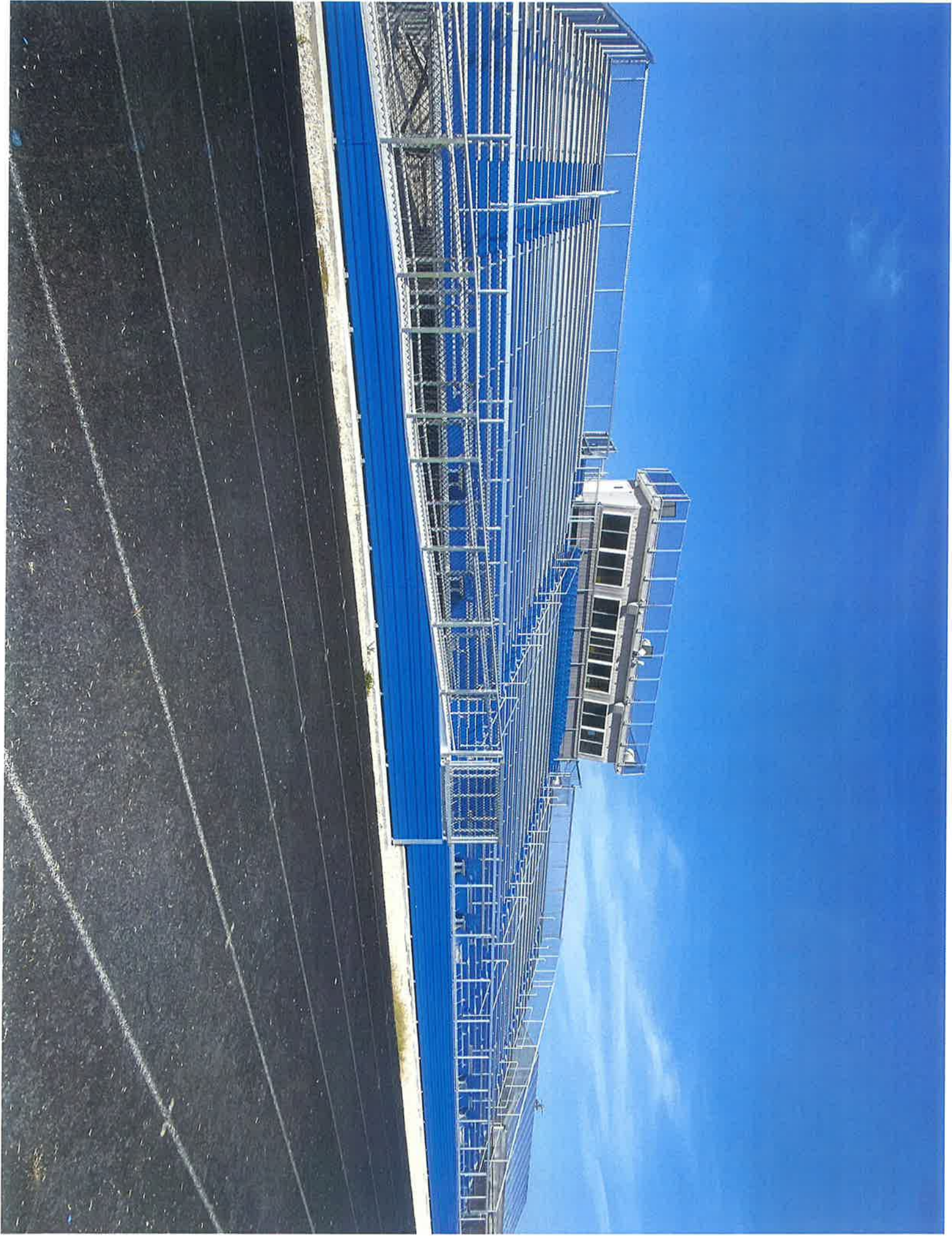
- executed on this project, and in the event of a discrepancy between the project documents and this proposal, our proposal shall govern.
2. Toadvine Enterprises is a participant in the coordination with other trades. It is beyond our scope to facilitate coordination and make sure all parties are coordinated.
 3. Client will provide timely review and response to questions and submittals to allow the schedule to proceed without delay. Generally, (5) working days for RFI's and (10) working days for submittal review, unless noted otherwise
 4. Contract agreement must allow for billing and receiving payment for stored materials.
 5. Final code compliance is determined by the local code official. Toadvine Enterprises will exercise the Standard of Care to comply with applicable laws and codes in effect at the time the services are performed hereunder. If changes arise during construction due to differing code interpretations, Toadvine Enterprises shall not be held liable. Toadvine Enterprises will incorporate any comments received from local code officials during drawing review. We shall not be responsible for the cost or time impacts to our work imposed by interpretations or changes to our work by local code officials.
 6. Architectural code compliance to be the responsibility of the project Architect.
 7. Our proposal includes a structurally sound design but does not include responsibility for ensuring local code compliance or identifying code compliance errors provided to us in the Subcontract Documents.
 8. Toadvine Enterprises must have clear and timely access for equipment, deliveries, and personnel as needed on the construction site.
 9. Market pricing of Steel and Aluminum raw material based on award within 60 days of bid submittal (price subject to Nucor/LME or similar market pricing rate changes if not awarded within 60 days).
 10. We will examine and compare the drawings, specifications, other Subcontract Documents, and information furnished relative to our work. Such examination and comparison shall be solely for the purpose of facilitating our work and not for the discovery of errors, inconsistencies, or omissions, in the Subcontract Documents, not for ascertaining if the Subcontract Documents are in accordance with laws. We will not have liability for errors, omissions, or inconsistencies discovered therein.
 11. We shall rely upon the accuracy of environmental, subsurface, soil reports and investigations provided by the CM/GC, Owner, or other third party. We shall not be responsible for verifying the accuracy of those documents. We shall not be responsible for information describing the physical characteristics of the site, including surveys, site evaluations, legal descriptions, data, or drawings depicting existing conditions, subsurface conditions, and environmental studies, reports, and investigations.
 12. We shall not be responsible for investigating or verifying that work by others, necessary for the connection of our scope items, has been built in accordance with the contract documents.
 13. Our proposal is based on all aesthetics as prescribed/specified in the Subcontract Documents by the architect or designer of record as of the date of this proposal. Changes to aesthetic aspects of the project will entail an equitable contract adjustment. We shall not be liable for subjective, sole responsible decision making by customer or other third parties regarding aesthetics.
 14. The completeness, timeliness, and quality of Toadvine Enterprise's work will be evaluated based on standards and specifications included in the Subcontract Documents, instead of a subjective evaluation by Owner, Architect, or any other party.
 15. Our proposal does not include verification of field measurements after our drawings have been approved. Should Toadvine Enterprises be required to field verify existing conditions prior to work commencing, Toadvine Enterprises shall be entitled to additional time and/or compensation to adjust our work if non-conforming conditions are found which deviate from

the Subcontract Documents and/or the Approved Drawings

16. Non-prevailing wage rates are assumed
17. Proposal assumes a builder's risk insurance policy will be provided by owner or CM
18. One, single, final cleaning of installed materials at the time of substantial completion of our scope of work.
19. If the Subcontract Documents specify that we are responsible for the design of a particular system or component for Project incorporation, then all design and performance criteria shall be specified. We shall not be responsible for the adequacy of such performance and design criteria.
20. We shall not be held liable for damages from impacts to project schedules due to resolving undefined or incomplete contract document details during manufacturing or construction. In addition, Toadvine Enterprises shall not have payments withheld for schedule impacts from completing our delegated design scope responsibilities.
21. Our proposal is based on our existing insurance coverage, which includes professional liability with qualified language regarding delegated design.
22. Product limitations: Specs cannot exceed manufactured product limitations and pricing is based on reference standards including but not limited to: ASTM, AISC, ICC reports, Aluminum Design Manual, GANA, NAAMM, ACI, ANSI, PCI.







Invitation To Bid

Morgan County Schools is accepting bids for the following:

Football Field Bleacher Bleachers at Sunbright High School

This bid is for football field bleachers

Specifications can be obtained by contacting Jim Aytes, Maintenance Supervisor, Morgan County Schools at 423-539-8801. Sealed bids should be delivered to Morgan County Schools, 136 Flat Fork Road, Wartburg TN 37787 and should be identified as "2024 Sunbright High football field bleachers bid"

Bid opening will be Wednesday, April 24, 2024 at 10:05 a.m. in the Large Conference Room of Morgan County Schools, 136 Flat Fork Road, Wartburg TN 37887. Morgan County Schools reserves the right to reject any and all bids.

Morgan County Schools does not discriminate based on race, color or national origin in federal or state sponsored programs, pursuant to Title VI of the Civil Rights Act of 1964 (42 U.S.C.2000d).

TOADVINE

SEATING • ATHLETIC EQUIPMENT • VIDEO SCOREBOARDS

P.O. Box 190 • Fisherville, KY 40023 • Phone: 502-241-6010 • 1-877-211-6925 • Fax: 502-241-2288 • www.toadvine.com

PROPOSAL

4-24-24

To: MORGAN COUNTY SCHOOLS - TENNESSEE

From: CHRIS TOADVINE

Job Name: WARTBURG HIGH SCHOOL & SUNBRIGHT HIGH SCHOOL

Job Location: WARTBURG, TN & SUNBRIGHT, TN

HOME FOOTBALL – (2) STADIUMS – ONE AT EACH SCHOOL

DANT CLAYTON ALUM-A-STAND GRANDSTAND. **BASIS OF DESIGN**

- 10 ROWS X 177' LONG
- SEATS: 1000
- 8" RISE PER ROW X 24" ROW SPACING
- 3" TUBE AND CHANNEL DESIGN – 10X STRONGER THAN WELDED ANGLE
- 40" ELEVATION AT FRONT WALKWAY
- FULLY CLOSED SLIP AND STAIN RESISTANT WALK SURFACES
- POWDER COATED RISER BOARDS.
- POWDER COATED RISER SKIRT BELOW FRONT WALKWAY
- ADA SEATING PER CODE
- ANODIZED BENCH SEATING
- BLACK VINYL CHAIN LINK ENCLOSURE AT ALL GUARD RAIL LOCATIONS
- INSTALLER MUST BE PROVIDED ACCESS DIRECTLY TO STAND FOR CRANES, FORKLIFTS ETC. TO COMPLETE INSTALLATION.

TOTAL MATERIALS DELIVERED AND INSTALLED PRICE

\$ 579,294.00

**This is provided both are ordered at the same time + same unit \$289,647 each*

INCLUSIONS:

- FOUNDATION DESIGN
- INSTALLATION OF BLEACHERS

EXCLUSIONS:

- CONCRETE
- SITEWORK OF ANY KIND
- ANY REMOVAL OF EXISTING
- SURVEYS OR CONTROL POINTS – TO BE PROVIDED BY CM/OTHERS
- LOCAL PERMITS OR LICENSES TO BE BY GC/OWNER
- SEE ATTACHED PROJECT EXCLUSIONS PAGE

PRICES ARE GOOD FOR 30 DAYS

EXCLUSIONS & CLARIFICATIONS:

APPLICABLE UNLESS SPECIFICALLY CALLED OUT IN THE SCOPE ABOVE

CONTRACT ITEMS

1. Pay if paid terms
2. No damages for delay clauses
3. Liquidated and consequential damages
4. Accelerations or changes to our schedule without and equitable contract price adjustment
5. Unreasonable limitations on profit and overhead charges in connection with change orders
6. Builders Risk Insurance
7. Insurance limits exceeding, or other requirements beyond, the attached standard insurance certificate & endorsements.
8. Waiver of lien or bond rights prior to receiving payment

DESIGN AND CONSTRUCTION ITEMS

1. Demolition.
2. Temporary Access (roadways, bridges, matting, etc.)
3. Field Welding
4. Geotechnical Services.
5. Special Inspection Services.
6. Testing and Inspections Services.
7. Protection of our work from the work performed by others.
8. Obtaining building permits of any kind.
9. Services for early foundation design.
10. Services resulting from changes of scope, magnitude and timeline of the project as described.
11. Services resulting from corrections or revisions required because of errors or omissions in construction by the contractor or other subcontractors.
12. Shimming more than amount included in bid.
13. Shimming for work performed by others that is out of industry standard tolerance or tolerances noted on Toadvine Enterprises design documents.
14. Toadvine Enterprises will not be responsible for locating utilities, unless noted otherwise in our proposal. The owner/GC or CM is obligated to ensure that all utilities are properly marked and shown to Toadvine Enterprises prior to beginning of work. Toadvine Enterprises will not be responsible for unmarked, miss-marked, private, or otherwise unknown utilities.
15. BIM requirements
16. Design or construction of shoring and bracing for excavations and buildings or underpinning of adjacent structures.
17. Services required for investigating or making measured drawings of existing conditions or verification of drawings and information provided by the owner, CM/GC, architect or other third party.
18. Verification of field measurements after our design drawings have been approved.
19. Lightning protection or electrical grounding cables, unless noted otherwise in our proposal.
20. Composite clean-up crew participation.

21. Multiple cleaning iterations of installed materials
22. Dust control
23. Flagmen, street barriers, permits to close streets, etc.
24. Task lighting
25. Security of material, equipment, tools from theft.
26. Gutters, drip shields, drain bodies, drain connections or any other types of drainage items within or below the stadia system.
27. Drop panels, sub-roofs, or closure material at thresholds between our work and the work of others, not shown on the contract drawings.
28. Flashing, or other joint or closure material, at thresholds between our work and the work of others, not shown on the contract drawings.
29. Trim, closure, or other material necessary around the penetration of the building columns through the stadia / loge areas.
30. Vertical closure at egress stairs and/or ramps, below the tread support channels
31. Riser Closure / Skirting unless noted in scope of work.
32. Fencing below the grandstand unless noted in scope of work
33. Fencing or railing system not attached to stadia (unless specifically included in scope of work).
34. Embedded steel in concrete or other work provided by others.
35. Anchor bolt material or templates for work not specified by Toadvine Enterprises
36. Fire protection, firestopping or fire rating for any provided materials

FOUNDATION/CONCRETE ITEMS

1. Site Clearing
2. Over excavation of foundations.
3. Rock excavation.
4. Off-site removal of spoils.
5. Landscaping.
6. Storm drainage and culverts.
7. Gravel backfills.
8. Caulking.
9. Waterproofing.
10. Baseline layout.
11. Cold weather protection.
12. Epoxy rebar.
13. Geo grid.
14. Trench drains.
15. Electrical vaults.
16. Pipe supports and bollards.
17. Remediation for unsuitable soils. I.e... Flowable fill, etc.
18. Riprap and geotextile purchase and installation.
19. All pumping, diversion, dewatering of areas.
20. Concrete pumping due to poor site conditions.
21. Foundations or other concrete work.
22. Baseplate grouting.
23. Shoring for slabs on metal deck.

BID CLARIFICATIONS

1. Our proposal, in its entirety, is a required attachment to any agreement to any contract document

TOADVINE

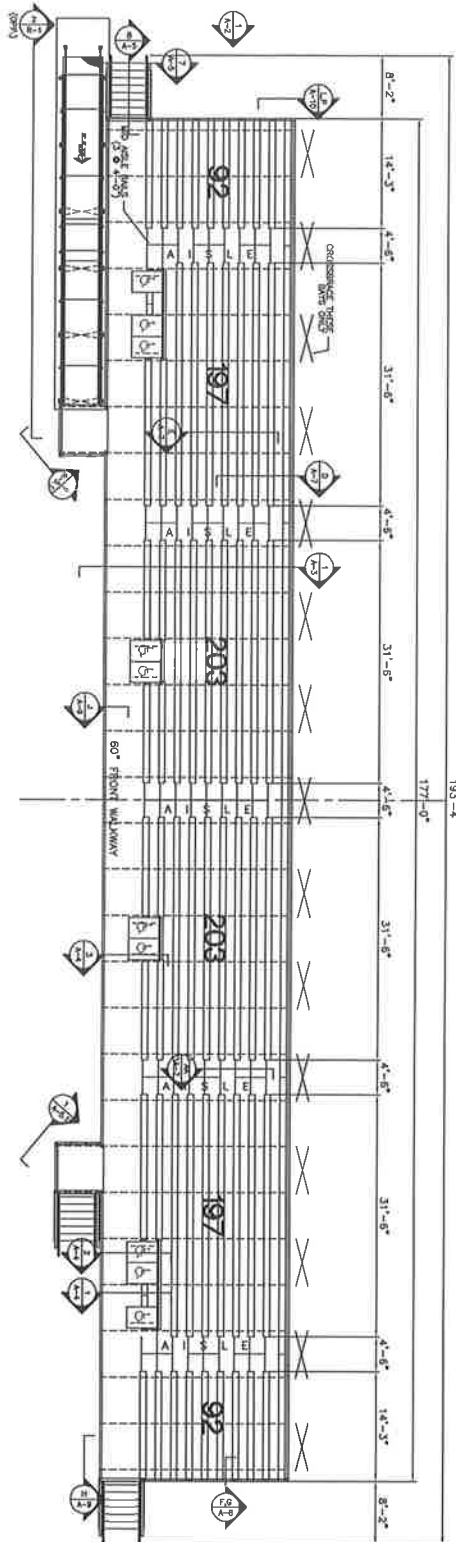
SEATING • ATHLETIC EQUIPMENT • VIDEO SCOREBOARDS

P.O. Box 190 • Fisherville, KY 40023 • Phone: 502-241-6010 • 1-877-211-6925 • Fax: 502-241-2288 • www.toadvine.com

- executed on this project, and in the event of a discrepancy between the project documents and this proposal, our proposal shall govern.
2. Toadvine Enterprises is a participant in the coordination with other trades. It is beyond our scope to facilitate coordination and make sure all parties are coordinated.
 3. Client will provide timely review and response to questions and submittals to allow the schedule to proceed without delay. Generally, (5) working days for RFI's and (10) working days for submittal review, unless noted otherwise
 4. Contract agreement must allow for billing and receiving payment for stored materials.
 5. Final code compliance is determined by the local code official. Toadvine Enterprises will exercise the Standard of Care to comply with applicable laws and codes in effect at the time the services are performed hereunder. If changes arise during construction due to differing code interpretations, Toadvine Enterprises shall not be held liable. Toadvine Enterprises will incorporate any comments received from local code officials during drawing review. We shall not be responsible for the cost or time impacts to our work imposed by interpretations or changes to our work by local code officials.
 6. Architectural code compliance to be the responsibility of the project Architect.
 7. Our proposal includes a structurally sound design but does not include responsibility for ensuring local code compliance or identifying code compliance errors provided to us in the Subcontract Documents.
 8. Toadvine Enterprises must have clear and timely access for equipment, deliveries, and personnel as needed on the construction site.
 9. Market pricing of Steel and Aluminum raw material based on award within 60 days of bid submittal (price subject to Nucor/LME or similar market pricing rate changes if not awarded within 60 days).
 10. We will examine and compare the drawings, specifications, other Subcontract Documents, and information furnished relative to our work. Such examination and comparison shall be solely for the purpose of facilitating our work and not for the discovery of errors, inconsistencies, or omissions, in the Subcontract Documents, not for ascertaining if the Subcontract Documents are in accordance with laws. We will not have liability for errors, omissions, or inconsistencies discovered therein.
 11. We shall rely upon the accuracy of environmental, subsurface, soil reports and investigations provided by the CM/GC, Owner, or other third party. We shall not be responsible for verifying the accuracy of those documents. We shall not be responsible for information describing the physical characteristics of the site, including surveys, site evaluations, legal descriptions, data, or drawings depicting existing conditions, subsurface conditions, and environmental studies, reports, and investigations.
 12. We shall not be responsible for investigating or verifying that work by others, necessary for the connection of our scope items, has been built in accordance with the contract documents.
 13. Our proposal is based on all aesthetics as prescribed/specified in the Subcontract Documents by the architect or designer of record as of the date of this proposal. Changes to aesthetic aspects of the project will entail an equitable contract adjustment. We shall not be liable for subjective, sole responsible decision making by customer or other third parties regarding aesthetics.
 14. The completeness, timeliness, and quality of Toadvine Enterprise's work will be evaluated based on standards and specifications included in the Subcontract Documents, instead of a subjective evaluation by Owner, Architect, or any other party.
 15. Our proposal does not include verification of field measurements after our drawings have been approved. Should Toadvine Enterprises be required to field verify existing conditions prior to work commencing, Toadvine Enterprises shall be entitled to additional time and/or compensation to adjust our work if non-conforming conditions are found which deviate from

the Subcontract Documents and/or the Approved Drawings

16. Non-prevailing wage rates are assumed
17. Proposal assumes a builder's risk insurance policy will be provided by owner or CM
18. One, single, final cleaning of installed materials at the time of substantial completion of our scope of work.
19. If the Subcontract Documents specify that we are responsible for the design of a particular system or component for Project incorporation, then all design and performance criteria shall be specified. We shall not be responsible for the adequacy of such performance and design criteria.
20. We shall not be held liable for damages from impacts to project schedules due to resolving undefined or incomplete contract document details during manufacturing or construction. In addition, Toadvine Enterprises shall not have payments withheld for schedule impacts from completing our delegated design scope responsibilities.
21. Our proposal is based on our existing insurance coverage, which includes professional liability with qualified language regarding delegated design.
22. Product limitations: Specs cannot exceed manufactured product limitations and pricing is based on reference standards including but not limited to: ASTM, AISC, ICC reports, Aluminum Design Manual, GANA, NAAMM, ACI, ANSI, PCI.



SEATING PLAN
SCALE: 1/8" = 1'-0"

- 10 ROWS, 40" ELEVATION
- B / 24 RISE/RUN
- SEATING TYPE: 994, CLOSED
- BENCH SEATING CAPACITY: 994
- CHAIR SEATING CAPACITY: 0
- WHEELCHAIR SEATING CAPACITY: 10
- COMPARISON SEATING CAPACITY: 4
- TOTAL SEATING CAPACITY: 998

DESIGN NOTES:
 DESIGNER'S RESPONSIBILITY TO INTERPRETATION OF THE RISERS FACTORS AND THE 2003 INTERNATIONAL BUILDING CODE (IBC) FOR OUTDOOR, OPEN-AIR, SMOKE-PROTECTED ASSEMBLY SEATING WITH NON-COMBUSTIBLE USE GROUP I-5, CONSTRUCTION TYPE IIB.
 IT IS THE CUSTOMER'S RESPONSIBILITY TO VERIFY THAT THESE DRAWINGS SATISFY LOCAL AND FEDERAL REQUIREMENTS AND TO RECOMMEND THAT THESE DRAWINGS BE REVIEWED AND APPROVED BY THE LOCAL AUTHORITY HAVING JURISDICTION TO FINAL DESIGN. REVISIONS MAY RESULT IN CONTRACT CHANGE.
 THIS DRAWING IS FOR PROPOSAL AND PRELIMINARY PURPOSES ONLY. NOT FOR CONSTRUCTION.

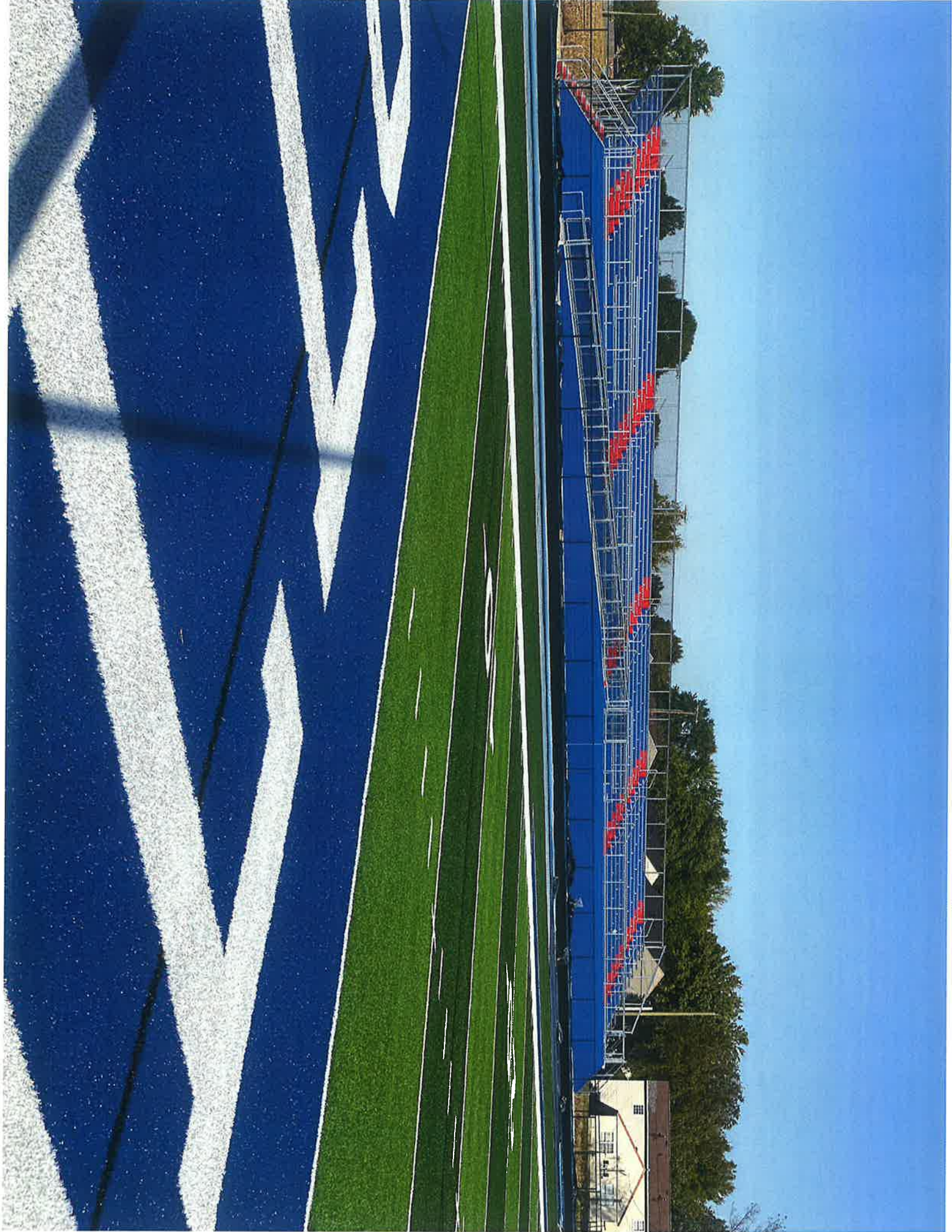
<p>DANT CLAYTON CORPORATION 1500 Bernheim Lane Louisville, KY 40201-7406 Telephone (502) 634-3626 WWW.DANTCLAYTON.COM</p>		<p>PROJECT NAME:</p>																		
<p>REVISIONS</p> <table border="1"> <thead> <tr> <th>NO.</th> <th>DATE</th> <th>DESCRIPTION</th> <th>BY</th> <th>CHKD</th> </tr> </thead> <tbody> <tr> <td>1</td> <td></td> <td></td> <td></td> <td></td> </tr> </tbody> </table>	NO.	DATE	DESCRIPTION	BY	CHKD	1					<table border="1"> <thead> <tr> <th>REVISED</th> <th>DATE</th> <th>BY</th> <th>CHKD</th> </tr> </thead> <tbody> <tr> <td></td> <td></td> <td></td> <td></td> </tr> </tbody> </table>	REVISED	DATE	BY	CHKD					<p>DATE: 01/19/2011 TIME: 10:00 AM DRAWN BY: [Name] CHECKED BY: [Name] PROJECT: [Name] SHEET: 1 OF 1</p>
NO.	DATE	DESCRIPTION	BY	CHKD																
1																				
REVISED	DATE	BY	CHKD																	

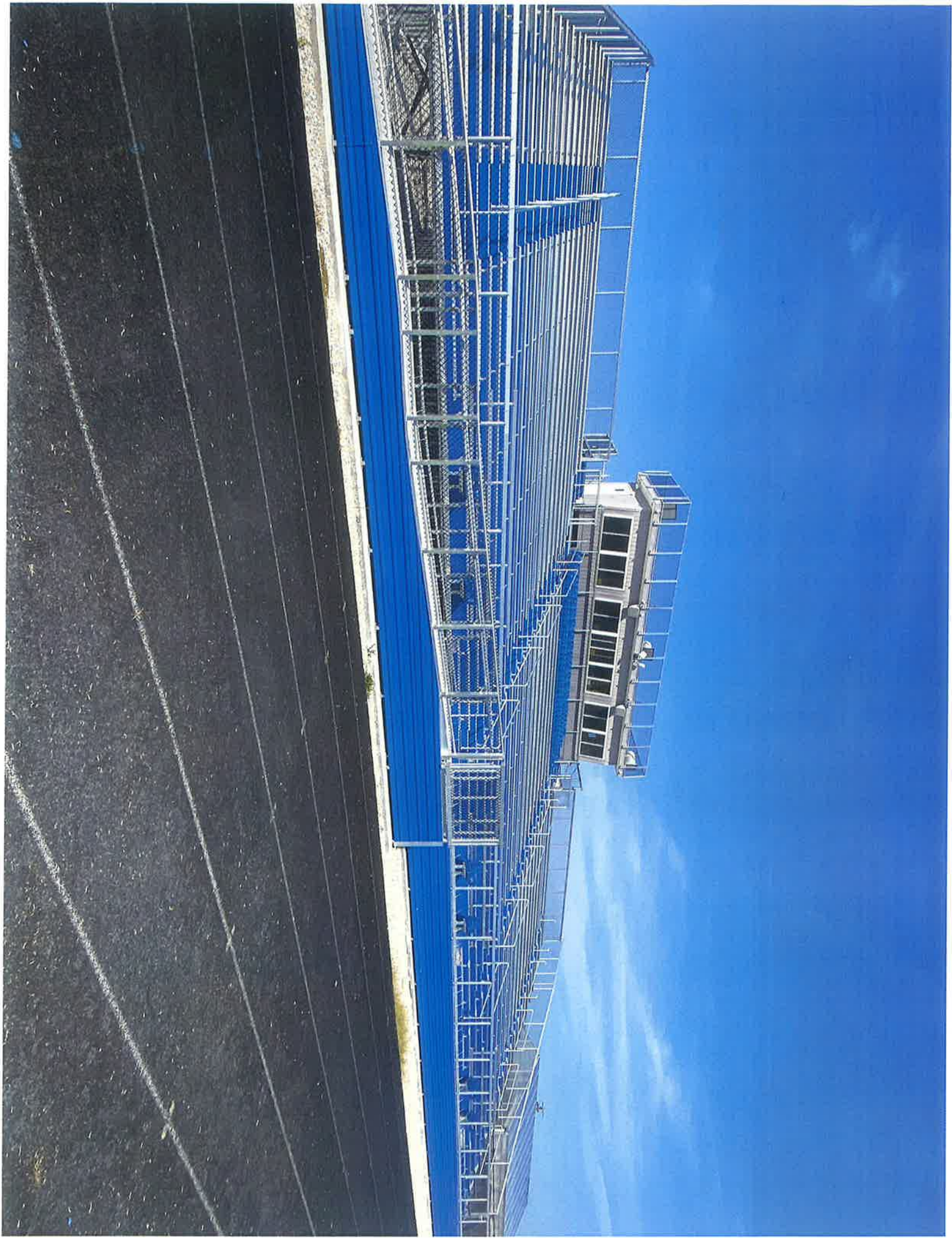
THIS DRAWING IS FOR PROPOSAL AND PRELIMINARY PURPOSES ONLY. NOT FOR CONSTRUCTION.

0119877

A-1







Invitation To Bid

Morgan County Schools is accepting bids for the following:

Football Field Bleacher Bleachers at Wartburg Central High School

This bid is for football field bleachers

Specifications can be obtained by contacting Jim Aytes, Maintenance Supervisor, Morgan County Schools at 423-539-8801. Sealed bids should be delivered to Morgan County Schools, 136 Flat Fork Road, Wartburg TN 37787 and should be identified as "2024 Wartburg Central High football field bleachers bid"

Bid opening will be Wednesday, April 24, 2024 at 10:00 a.m. in the Large Conference Room of Morgan County Schools, 136 Flat Fork Road, Wartburg TN 37887. Morgan County Schools reserves the right to reject any and all bids.

Morgan County Schools does not discriminate based on race, color or national origin in federal or state sponsored programs, pursuant to Title VI of the Civil Rights Act of 1964 (42 U.S.C.2000d).