

Special Business Session
Tuesday, April 9, 2019 Mountain Time

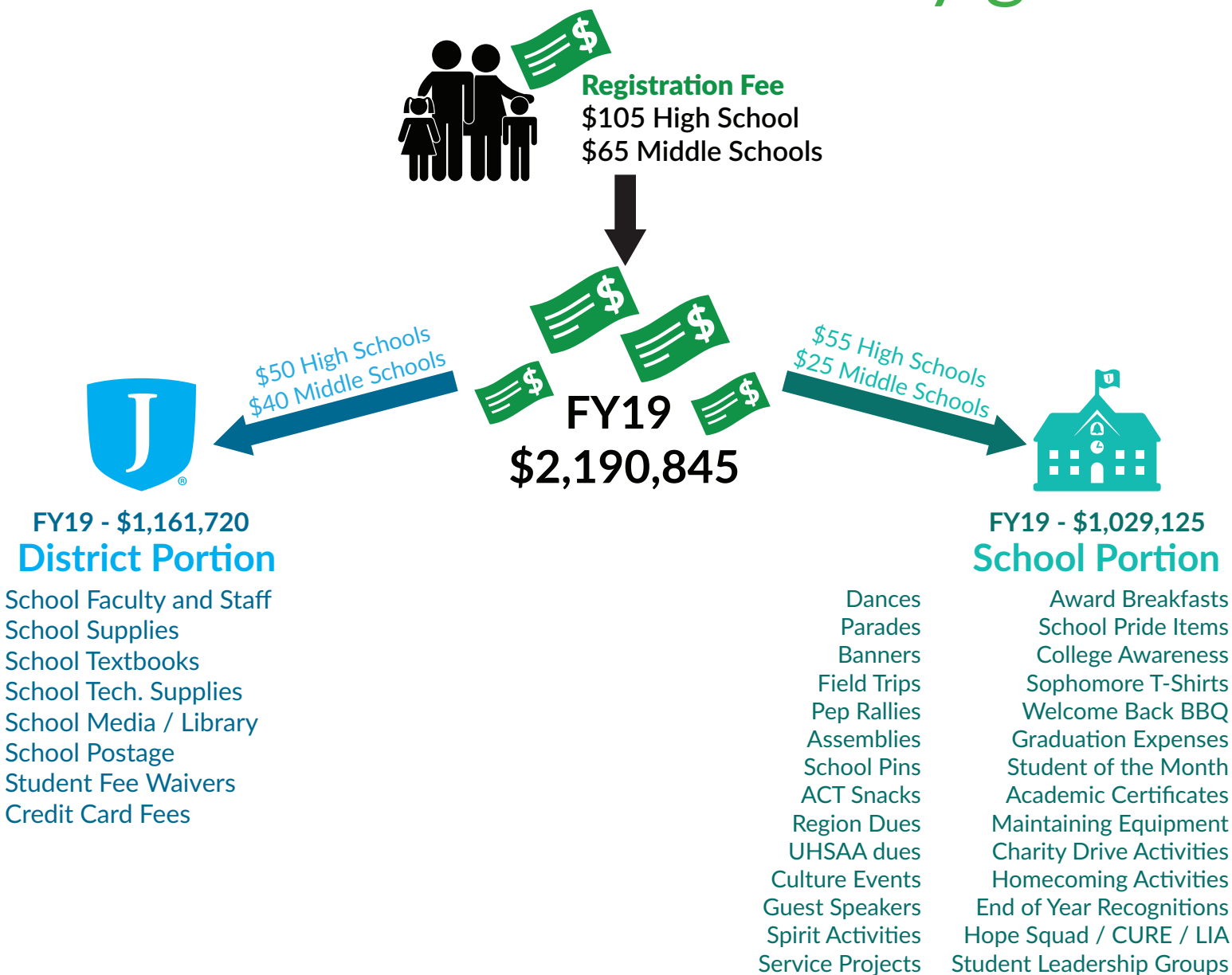
JATC South Campus (Board Conference
Room)
12723 S. Park Avenue (2080 West)
Riverton, Utah 84065

1. **SPECIAL BUSINESS SESSION – Special Business Items**
 - 1.A. **Recommendation to Approve Name for New Elementary School in Herriman**
 - 1.B. **Recommendation to Approve Name for New Elementary School in Bluffdale**
 - 1.C. **Recommendation to Approve Name for New Middle School in South Jordan**
 - 1.D. **Recommendation to Approve Name for New Middle School in Bluffdale**
2. **SPECIAL BUSINESS SESSION – Bids**
 - 2.A. **New Construction – Remodel Bingham High School**
 - 2.B. **West Jordan Middle School Rebuild – Classroom, Office & Cafeteria Furniture**
3. **STUDY SESSION – OPEN MEETING**
 - 3.A. **Board Policy Review: BSC204 Monitoring Superintendent Performance**
 - 3.B. **Superintendent Search**
 - 3.C. **Presentation on Secondary Registration Fees**
 - 3.D. **Projected Building Plan**
 - 3.E. **Updated Matrix for Ends Policies**
 - 3.F. **Discussion on Administrative Policy AA445 Wellness**
 - 3.G. **Professional Development Board Book Study**
 - 3.H. **Review of National School Board Association (NSBA) Conference**
 - 3.I. **Board Reports and Comments**
4. **POTENTIAL CLOSED SESSION**
 - 4.A. **Personnel**
 - 4.B. **Property**
 - 4.C. **Potential Litigation**
 - 4.D. **Negotiations**
 - 4.E. **Security**

High School & Middle School Fees

- The 2012-13 year was the last time registration fees were increased. That increase was \$5 for middle school (8.3%) and \$10 for high school (10.5%).
- The registration fee has had a number of labels in the past, including textbook fee, book rental, book deposit, activity fee, locker rental, etc.
- Registration fees could be viewed as a user fee which helps lower property taxes. Along with other general revenues, schools are allocated funds and personnel using money collected through registration fees, property taxes, WPU, and other sources.

Where does the money go?



Ongoing Projected Building Plan

PROJECTS IN PROGRESS	Construction/ Financing Timeline	Progress	School Opening	Type	Location	Funding	Construction Cost*	Purpose
	2017-2019	Under Construction	2019-20	Middle School	South Jordan	November 2016 Bond	\$32.5 million	New Construction
	2017-2019			Middle School	West Jordan		\$40.0 million	
	2017-2020			High School	Herriman		\$81.5 million	
	2018-2019			Elementary School	Bluffdale		\$16.9 million	
	2018-2019			Elementary School	Herriman		\$19.1 million	
	2018-2020			Middle School	Bluffdale		\$37.8 million	
	2018-2020		2020-21	Elementary School	West Jordan	Capital Reserve	\$18.3 million	New
	2019-2020	Planning Phase	n/a	Monte Vista Elem.	South Jordan	Capital Reserve	TBD	Expansion
	2019	Planning Phase	n/a	Bingham High School	South Jordan	Summer Projects	TBD	Renovation

Type	Location	Suggested Funding Source	Purpose
Bingham High School	South Jordan	Summer Projects	Renovation
Transportation	West Jordan	Capital Reserve	Expansion
Elementary School	South Jordan	Lease Revenue Bond	New Construction
Elementary School	Herriman		
Special School	USU Campus	Capital Reserve/ Lease Revenue Bond/ November 202X Bond	New Construction
Elementary School	Herriman		
Middle School	West Jordan		
High School	West South Jordan		
Elementary School	South Jordan		
Elementary School	Herriman/South Jordan		
Middle School	South Jordan		
Middle School	Herriman		
West Jordan High	West Jordan		

* Cost estimates will be revised after designs and bids are received. Construction inflation can be significant and therefore may cause project in the planning phase to be higher than estimated. Construction costs include site upgrades, architectural, engineering and impact fees.