

Board of Education Regular Meeting

Monday, January 9, 2017 5:00 PM

C.L. Jones Middle School, 520 West Third, Minden, NE 68959

Ken Carpenter: Present
Justin Glanzer: Present
Craig Grams: Present
Richard Jacobsen: Present
Kevin Raun: Present
Rusty Rhynalds: Present

1. Roll Call

2. Elect New Board Officers

2.a. Nominations for President

Action(s):

Motion to nominate Grams as President Passed with a motion by Justin Glanzer and a second by Rusty Rhynalds.

Voting Detail:

Ken Carpenter: Yea
Justin Glanzer: Yea
Craig Grams: Yea
Richard Jacobsen: Yea
Kevin Raun: Yea
Rusty Rhynalds: Yea

Voting Summary: Yea: 6, Nay: 0

2.b. Cease Nominations for President

Action(s):

Motion to cease nominations for President Passed with a motion by Justin Glanzer and a second by Kevin Raun.

Voting Detail:

Ken Carpenter: Yea
Justin Glanzer: Yea
Craig Grams: Yea
Richard Jacobsen: Yea
Kevin Raun: Yea
Rusty Rhynalds: Yea

Voting Summary: Yea: 6, Nay: 0

2.c. Nominations for Vice-President

Action(s):

Motion to nominate Jacobsen as Vice-President Passed with a motion by Kevin Raun and a second by Ken Carpenter.

Voting Detail:

Ken Carpenter: Yea
Justin Glanzer: Yea

Craig Grams: Yea
Richard Jacobsen: Yea
Kevin Raun: Yea
Rusty Rhynalds: Yea

Voting Summary: Yea: 6, Nay: 0

2.d. Cease Nominations for Vice-President

Action(s):

Motion to cease nominations for Vice-President
Passed with a motion by Craig Grams and a second
by Justin Glanzer.

Voting Detail:

Ken Carpenter: Yea
Justin Glanzer: Yea
Craig Grams: Yea
Richard Jacobsen: Yea
Kevin Raun: Yea
Rusty Rhynalds: Yea

Voting Summary: Yea: 6, Nay: 0

2.e. Nominations for Secretary

Action(s):

Motion to nominate Carpenter as Secretary Passed
with a motion by Craig Grams and a second by
Richard Jacobsen.

Voting Detail:

Ken Carpenter: Yea
Justin Glanzer: Yea
Craig Grams: Yea
Richard Jacobsen: Yea
Kevin Raun: Yea
Rusty Rhynalds: Yea

Voting Summary: Yea: 6, Nay: 0

2.f. Cease Nominations for Secretary

Action(s):

Motion to cease nominations for Secretary Passed
with a motion by Rusty Rhynalds and a second by
Justin Glanzer.

Voting Detail:

Ken Carpenter: Yea
Justin Glanzer: Yea
Craig Grams: Yea
Richard Jacobsen: Yea
Kevin Raun: Yea
Rusty Rhynalds: Yea

Voting Summary: Yea: 6, Nay: 0

2.g. Elect Board Officers

Action(s):

Motion to elect the following officers: Grams -
President; Jacobsen - Vice-President; Carpenter -
Secretary Passed with a motion by Ken Carpenter
and a second by Justin Glanzer.

Voting Detail:

Ken Carpenter: Yea
Justin Glanzer: Yea
Craig Grams: Yea
Richard Jacobsen: Yea
Kevin Raun: Yea
Rusty Rhynalds: Yea

Voting Summary: Yea: 6, Nay: 0

3. Approval of Committees, Positions, and Designations

3.a. Approval of Committees

Action(s):

Motion to keep the committee assignments the same, being: Personnel - Raun and Grams; Policies - Glanzer and Carpenter; Buildings/Grounds - Jacobsen, Carpenter and Grams; Finance - Jacobsen, Raun, and Grams; Curriculum - Rhynalds and Raun; Americanism - Glanzer, Grams, and Raun; Legislation - Rhynalds and Glanzer Passed with a motion by Craig Grams and a second by Rusty Rhynalds.

Voting Detail:

Ken Carpenter: Yea
Justin Glanzer: Yea
Craig Grams: Yea
Richard Jacobsen: Yea
Kevin Raun: Yea
Rusty Rhynalds: Yea

Voting Summary: Yea: 6, Nay: 0

3.b. Approval of Current Legal Counsel, Depository Banks, Treasurer, and District Newspaper of Record

Action(s):

Motion to approve the Perry Law Firm as district legal counsel, Minden Exchange Bank and First Bank and Trust Company as the official depositories of school funds, Bill Johnson as Treasurer, and the Minden Courier as district newspaper of record Passed with a motion by Rusty Rhynalds and a second by Justin Glanzer.

Voting Detail:

Ken Carpenter: Yea
Justin Glanzer: Yea
Craig Grams: Abstain (With Conflict)
Richard Jacobsen: Yea
Kevin Raun: Yea
Rusty Rhynalds: Yea

Voting Summary: Yea: 5, Nay: 0, Abstain (With Conflict): 1

3.c. Approval of Current Board Policies and Regulations

Action(s):

Motion to approve current board policies and regulations Passed with a motion by Kevin Raun and a second by Richard Jacobsen.

Voting Detail:

Ken Carpenter: Yea
Justin Glanzer: Yea
Craig Grams: Yea
Richard Jacobsen: Yea
Kevin Raun: Yea
Rusty Rhynalds: Yea

Voting Summary: Yea: 6, Nay: 0

4. **Minutes**

Action(s):

Motion to approve the minutes from the December 12th meeting as presented Passed with a motion by Craig Grams and a second by Justin Glanzer.

Voting Detail:

Ken Carpenter: Yea
Justin Glanzer: Yea
Craig Grams: Yea
Richard Jacobsen: Yea
Kevin Raun: Yea
Rusty Rhynalds: Yea

Voting Summary: Yea: 6, Nay: 0

5. **Public Comment**

6. **Financial Reports - Action Items**

6.a. Consider Financial Reports

Action(s):

Motion to approve the Financial Reports as presented Passed with a motion by Justin Glanzer and a second by Ken Carpenter.

Voting Detail:

Ken Carpenter: Yea
Justin Glanzer: Yea
Craig Grams: Yea
Richard Jacobsen: Yea
Kevin Raun: Yea
Rusty Rhynalds: Yea

Voting Summary: Yea: 6, Nay: 0

7. **Old Business - Action Items**

7.a. Consider Bills - General Fund

Action(s):

Motion to approve the consideration of bills from the General Fund Passed with a motion by Ken Carpenter and a second by Justin Glanzer.

Voting Detail:

Ken Carpenter: Yea
Justin Glanzer: Yea

Craig Grams: Yea
Richard Jacobsen: Yea
Kevin Raun: Yea
Rusty Rhynalds: Yea

Voting Summary: Yea: 6, Nay: 0

8. Discussion Only

8.a. Report from Superintendent

8.b. Reports from Administrators

8.c. Facilities Update

9. New Business

9.a. Consider, Discuss, and Take Action on the Issuance of \$1,160,000 of General Obligation School Building Bonds, Series 2017 - amended 1/5/2017

Action(s):

Motion to authorize the issuance, sale, and delivery of General Obligation School Building Bonds, Series 2017, in an aggregate principal amount not exceed \$1,160,000; prescribing the form of the bonds; fixing in part and providing for the fixing in part of the terms of the bonds; providing for the levy and collection of taxes to pay the principal of and interest on the bonds; and related matters Passed with a motion by Kevin Raun and a second by Justin Glanzer.

Voting Detail:

Ken Carpenter: Yea
Justin Glanzer: Yea
Craig Grams: Yea
Richard Jacobsen: Yea
Kevin Raun: Yea
Rusty Rhynalds: Yea

Voting Summary: Yea: 6, Nay: 0

9.b. Consider, Discuss, and Take Action on a Resolution to Authorize the Issuance of NOT TO EXCEED \$3,490,000 of General Obligation Refunding Bonds, Series 2017, for the Purpose of Refinancing a Portion of the District's Series 2014 Bonds in Order to Achieve Interest Cost Savings - added 1/5/2017

Action(s):

Motion to authorize the issuance of NOT TO EXCEED \$3,490,000 of General Obligation Refunding Bonds, Series 2017, for the purpose of refinancing a portion of the District's Series 2014 bonds in order to achieve interest cost savings Passed with a motion by Craig Grams and a second by Justin Glanzer.

Voting Detail:

Ken Carpenter: Yea
Justin Glanzer: Yea
Craig Grams: Yea
Richard Jacobsen: Yea
Kevin Raun: Yea
Rusty Rhynalds: Yea

Voting Summary: Yea: 6, Nay: 0

10. Additional Information

11. Adjournment

Action(s):

At 5:35pm, motion to adjourn the meeting Passed with a motion by Ken Carpenter and a second by Rusty Rhynalds.

Voting Detail:

Ken Carpenter: Yea
Justin Glanzer: Yea
Craig Grams: Yea
Richard Jacobsen: Yea
Kevin Raun: Yea
Rusty Rhynalds: Yea

Voting Summary: Yea: 6, Nay: 0

Board Secretary

**MINDEN PUBLIC SCHOOLS
BOARD OF EDUCATION
December 12, 2016**

The agenda for the December 12, 2016 meeting was posted at the United States Post Office in Minden, Minden Exchange Bank, First Bank and Trust Company, Kearney County Courthouse, and the Minden city office. Agendas were mailed to the United States Post Office in Upland and Heartwell. The agenda was posted in the superintendent's office and published in the local paper.

The board meeting began at 5:00 pm with all board members present.

Motion by Grams and second by Glanzer to approve the minutes from the meeting held November 14. Roll call: Carpenter, aye; Glanzer, aye; Grams, aye; Jacobsen, aye; Raun, aye; Rhynalds, aye. Motion carried.

Motion by Glanzer and second by Carpenter to approve the financial reports. Roll call: Carpenter, aye; Glanzer, aye; Grams, aye; Jacobsen, aye; Raun, aye; Rhynalds, aye. Motion carried.

Motion by Carpenter and second by Jacobsen to approve the claims against the General Fund. Roll call: Carpenter, aye; Glanzer, aye; Grams, aye; Jacobsen, aye; Raun, aye; Rhynalds, aye. Motion carried.

Motion by Raun and second by Rhynalds to approve safety/security plan. Roll call: Carpenter, aye; Glanzer, aye; Grams, aye; Jacobsen, aye; Raun, aye; Rhynalds, aye. Motion carried.

Motion by Glanzer and second by Rhynalds to table the hot water tank purchase and softener repair. Roll call: Carpenter, aye; Glanzer, aye; Grams, aye; Jacobsen, aye; Raun, aye; Rhynalds, aye. Motion carried.

Motion by Grams and second by Glanzer to approve the proposed 2017-2018 agreement with the Minden Education Association for a 3.83% total package increase and a base salary of \$35,750. Roll call: Carpenter, aye; Glanzer, aye; Grams, aye; Jacobsen, abstain; Raun, aye; Rhynalds, abstain. Motion carried.

Motion by Glanzer and second by Rhynalds to approve assisting in the purchase of a CNC wood routing table for the Industrial Technology Department up to \$4,750.00. Roll call: Carpenter, aye; Glanzer, aye; Grams, aye; Jacobsen, aye; Raun, aye; Rhynalds, aye. Motion carried.

At 5:23 pm, a motion was made by Carpenter and second by Glanzer to adjourn the meeting. Roll call: Carpenter, aye; Glanzer, aye; Grams, aye; Jacobsen, aye; Raun, aye; Rhynalds, aye. Motion carried.

Secretary, Board of Education

MINDEN PUBLIC SCHOOLS
TREASURER'S REPORT
December 31, 2016

SCHOOL BALANCE - November 30, 2016	\$32,645.37	
Current Months Receipts	\$129,399.35	
Transfers from Investments	\$750,000.00	
Total Beginning Balance and Receipts	\$912,044.72	
Less: Disbursements	\$777,064.94	
Transfer to Investments	\$0.00	
Total Disbursements	\$777,064.94	
SCHOOL BALANCE - December 31, 2016	\$134,979.78	
BALANCE PER BANK STATEMENT - December 31, 2016	\$139,193.80	
Deposits In Transit	\$0.00	
LESS : Outstanding Checks	\$4,214.02	
RECONCILED BANK BALANCE - December 31, 2016	\$134,979.78	
(Balance - December 31, 2015 = \$29,342.43)		
GENERAL FUND INVESTMENTS		\$1,538,517.10
Money Market Minden Exchange	\$312,757.10	0.15% demand
Money Market First Bank	\$1,225,760.00	0.25% demand
(Balance December 31, 2015 = \$2,157,849.72)		
DEPRECIATION FUND INVESTED		\$1,931,417.60
Money Market Minden Exchange Bank	\$655,878.39	0.15% demand
Money Market First Bank	\$527,280.27	0.25% demand
NE Liquid Asset Fund - Depreciation Fund	\$748,258.44	
Checking Minden Exchange Bank	\$0.50	
(Balance December 31, 2015 = \$1,323,079.72)		
EMPLOYEE BENEFITS FUND		\$35,277.84
Money Market First Bank	\$35,277.84	0.25% demand
(Balance December 31, 2015 = \$35,189.52)		
BUILDING FUND		\$11,041,892.78
Money Market Minden Exchange Bank	\$2,680,746.12	0.15% demand
Money Market First Bank	\$57,513.69	0.25% demand
NE Liquid Asset Fund - Building Fund	\$748,131.48	
Money Market First Bank - HS Constr. Acct.	\$5,563,937.35	0.25% demand
NE Liquid Asset Fund - HS Constr. Acct.	\$1,991,562.67	
Checking Minden Exchange Bank	\$1.47	
(Balance December 31, 2015 = \$12,462,802.07)		
BOND FUND		\$455,250.74
Money Market Minden Exchange Bank	\$455,250.74	
(Balance December 31, 2015 = \$0.00)		
LUNCH FUND		\$96,805.28
Money Market First Bank	\$7,930.13	0.05% demand
Checking First Bank	\$88,875.15	
(Balance December 31, 2015 = \$101,409.27)		
FUNDS PLEDGED FOR DEPOSITS		
Minden Exchange Bank	\$6,953,044.31	Plus 250M FDIC
First Bank	\$8,410,000.00	Plus 250M FDIC

William Johnson, Treasurer

Monthly Board Report All Expenses

Account	Description	Proposed Budgeted	Disbursed	Balance Remaining	Percentage Spent
1-1100	Instructional Supplies & Services	\$347,847.48	\$69,660.35	\$278,187.13	20.03%
1-1100-110	Instructional Salaries & Benefits	\$4,604,337.74	\$1,893,141.72	\$2,711,196.02	41.12%
1-1125	Academic Intervention Supplies & Service	\$3,600.00	\$1,250.00	\$2,350.00	34.72%
1-1125-110	Academic Intervention Salaries & Benefits	\$120,856.08	\$49,554.75	\$71,301.33	41.00%
1-1200	SPED Supplies & Services	\$99,134.79	\$17,752.89	\$81,381.90	17.91%
1-1200-110	SPED Salaries & Benefits	\$1,071,703.58	\$409,104.36	\$662,599.22	38.17%
1-1290	Preschool Supplies & Services	\$19,555.00	\$3,365.88	\$16,189.12	17.21%
1-1290-110	Preschool Salaries & Benefits	\$6,187.99	\$1,030.76	\$5,157.23	16.66%
1-1310	Gifted Supplies & Services	\$1,900.00	\$135.00	\$1,765.00	7.11%
1-1310-110	Gifted Salaries & Benefits	\$49,587.86	\$20,611.58	\$28,976.28	41.57%
1-2120	Guidance Supplies & Services	\$3,500.00	\$338.02	\$3,161.98	9.66%
1-2120-110	Guidance Salaries & Benefits	\$270,087.54	\$112,256.99	\$157,830.55	41.56%
1-2130	Health Services	\$41,089.96	\$18,221.30	\$22,868.66	44.34%
1-2150	Safety & Security	\$6,000.00	\$1,538.46	\$4,461.54	25.64%
1-2190	Activities Supplies & Services	\$30,000.00	\$11,126.31	\$18,873.69	37.09%
1-2190-110	Activities Salaries & Benefits	\$182,148.37	\$59,577.08	\$122,571.29	32.71%
1-2210	ESU Grant	\$587.64	\$0.00	\$587.64	0.00%
1-2212	Staff Training and Curriculum Development	\$5,000.00	\$804.55	\$4,195.45	16.09%
1-2215	Assessment Coordinator Supplies & Service	\$850.00	\$391.00	\$459.00	46.00%
1-2215-110	Assessment Coordinator Salary & Benefits	\$40,223.69	\$16,757.79	\$23,465.90	41.66%
1-2222	Media Center Supplies & Services	\$26,242.25	\$9,680.74	\$16,561.51	36.89%
1-2222-110	Media Center Salaries & Benefits	\$241,137.86	\$95,476.90	\$145,660.96	39.59%
1-2310	Board of Education	\$43,845.63	\$15,027.65	\$28,817.98	34.27%
1-2320	Executive Administration Supplies & Services	\$10,350.00	\$2,773.21	\$7,576.79	26.79%
1-2320-110	Executive Administration Salaries & Benefits	\$240,297.20	\$98,489.40	\$141,807.80	40.99%
1-2330	District Legal Services	\$20,000.00	\$1,946.00	\$18,054.00	9.73%
1-2410	Principals Supplies & Services	\$9,025.00	\$2,926.81	\$6,098.19	32.43%
1-2410-110	Principals Salary & Benefits	\$541,729.96	\$228,732.94	\$312,997.02	42.22%
1-2500	Postage & Telephone	\$15,000.00	\$3,924.26	\$11,075.74	26.16%
1-2510	Business Administration	\$117,816.08	\$41,587.13	\$76,228.95	35.30%
1-2520	Non-Pupil Vehicle Fuel & Maintenance	\$10,500.00	\$1,342.48	\$9,157.52	12.79%
1-2610	Custodial Supplies & Services	\$30,000.00	\$12,115.60	\$17,884.40	40.39%
1-2610-110	Custodial Salaries & Benefits	\$258,982.51	\$99,495.29	\$159,487.22	38.42%
1-2615	Utilities	\$355,550.00	\$128,508.13	\$227,041.87	36.14%
1-2620	Maintenance Supplies & Services	\$366,000.01	\$94,813.12	\$271,186.89	25.91%
1-2620-110	Maintenance Salaries & Benefits	\$133,859.20	\$39,301.93	\$94,557.27	29.36%
1-2620-300	Insurance	\$104,095.99	\$104,095.99	\$0.00	100.00%
1-2750	Pupil Transportation Supplies & Services	\$109,500.00	\$61,738.86	\$47,761.14	56.38%
1-2750-110	Pupil Transportation Salaries & Benefits	\$166,317.37	\$60,361.77	\$105,955.60	36.29%
1-3135	High Ability Learners	\$7,600.00	\$3,777.00	\$3,823.00	49.70%
1-4200	Title I Part A	\$115,471.00	\$40,414.87	\$75,056.13	35.00%
1-4310	Title II Part A	\$23,424.00	\$23,339.00	\$85.00	99.64%
1-4400	Federal Funds	\$169,077.00	\$103,514.71	\$65,562.29	61.22%
1-6000	Summer School	\$9,026.14	\$0.00	\$9,026.14	0.00%
1-8000	Interfund Transfers	\$50,000.00	\$0.00	\$50,000.00	0.00%
1-9000	Payroll Reimbursed by Other Funds/Agencies	\$5,288.76	\$1,976.17	\$3,312.59	37.37%
Totals		\$10,084,333.68	\$3,961,978.75	\$6,122,354.93	39.29%

2016/17 Projections vs. Actuals for General Fund As of December 31, 2016

Income

2016/17 Budgeted Income = \$9,984,333.68				
Month	Projected Income	Actual Income	Over/(Under) Projection	Running Balance Over/(Under) Projection
September	\$2,018,832.27	\$1,848,291.32	(\$170,540.95)	(\$170,540.95)
October	\$513,194.75	\$426,969.72	(\$86,225.03)	(\$256,765.98)
November	\$179,718.01	\$127,266.47	(\$52,451.54)	(\$309,217.52)
December	\$157,752.47	\$128,371.10	(\$29,381.37)	(\$338,598.89)
January	\$1,635,433.86			
February	\$831,695.00			
March	\$512,196.32			
April	\$379,404.68			
May	\$2,603,914.22			
June	\$831,695.00			
July	\$131,793.20			
August	\$188,703.90			

Cash Flow

Month	Projected Cash Flow	Actual Cash Flow	Over/(Under) Projection	Running Balance Over/(Under) Projection
September	\$1,130,402.47	\$980,999.16	(\$149,403.31)	(\$149,403.31)
October	(\$268,341.11)	(\$346,348.00)	(\$78,006.89)	(\$227,410.20)
November	(\$629,045.55)	(\$656,873.54)	(\$27,827.99)	(\$255,238.19)
December	(\$620,758.09)	(\$647,326.76)	(\$26,568.67)	(\$281,806.86)
January	\$858,940.17	\$0.00		
February	\$45,116.97	\$0.00		
March	(\$277,407.01)	\$0.00		
April	(\$405,156.48)	\$0.00		
May	\$1,784,057.89	\$0.00		
June	(\$58,751.66)	\$0.00		
July	(\$716,299.26)	\$0.00		
August	(\$942,758.34)	\$0.00		

Expenses

2016/17 Budgeted Expenses = \$10,084,333.68				
Month	Projected Expenses	Actual Expenses	Over/(Under) Projection	Running Balance Over/(Under) Projection
September	\$888,429.80	\$867,292.16	(\$21,137.64)	(\$21,137.64)
October	\$781,535.86	\$773,317.72	(\$8,218.14)	(\$29,355.78)
November	\$808,763.56	\$784,140.01	(\$24,623.55)	(\$53,979.33)
December	\$778,510.56	\$775,697.86	(\$2,812.70)	(\$56,792.03)
January	\$776,493.69			
February	\$786,578.03			
March	\$789,603.33			
April	\$784,561.16			
May	\$819,856.33			
June	\$890,446.66			
July	\$848,092.46			
August	\$1,131,462.24			

General Fund Balance

Beginning Reconciled GF Balance = \$2,343,046.02			
Month	Projected GF Balance	Actual Reconciled GF Balance	Over/(Under) Projection
September	\$3,473,448.49	\$3,324,045.18	(\$149,403.31)
October	\$3,205,107.38	\$2,977,697.18	(\$227,410.20)
November	\$2,576,061.83	\$2,320,823.64	(\$255,238.19)
December	\$1,955,303.74	\$1,673,496.88	(\$281,806.86)
January	\$2,814,243.91		
February	\$2,859,360.88		
March	\$2,581,953.87		
April	\$2,176,797.39		
May	\$3,960,855.28		
June	\$3,902,103.62		
July	\$3,185,804.36		
August	\$2,243,046.02		

Lunch Fund Checks and Liabilities

Check Number	Date	Payee	Reason	Amount
EFT	12/8/2016	Sysco - EFT	Commodities	\$ 9,518.99
5135	12/8/2016	Mason's Market	Commodities	\$ 41.14
5136	12/8/2016	Juanita Castenada	Lunch Account Refund	\$ 48.00
5137	12/8/2016	Minden Hardware	Lunch Room Supplies	\$ 73.45
5138	12/8/2016	Dollar General	Lunch Room Supplies	\$ 45.30
5139	12/8/2016	Minden Office Supply	Lunch Room Printer Ink	\$ 64.04
5140	12/8/2016	School Nutrition Association	Lunch Room Training	\$ 48.50
5141	12/8/2016	Chesterman Company	Beverages	\$ 200.40
5142	12/8/2016	Cash-wa Distributing Co.	Commodities	\$ 6,015.01
5143	12/8/2016	Nebraska Food Distribution	Commodities	\$ 2,553.18
5144	12/8/2016	Pepsi-cola Bottling	Beverages	\$ 189.30
5145	12/8/2016	Roberts Dairy	Milk Products	\$ 3,168.65
5147	12/8/2016	Apple Acres Orchard	Apples	\$ 140.00
5148	12/8/2016	Pizza Hut	Christmas Lunch Pizza	\$ 573.00
5149	12/8/2016	Computer Warehouse #4	Lunch Room Computer Repair	\$ 67.90
2971	1/10/2017	Blue Cross Blue Shield	Health & Dental Insurance Premiums	\$ 5,164.97
2972	1/10/2017	Madison National Life Insurance Co., Inc.	Employee FEBA - Life Insurance Premiums	\$ 24.60
2972	1/10/2017	Madison National Life Insurance Co., Inc.	EE Life Insurance Premiums	\$ 26.05
2977	1/10/2017	Minden Public Schools	EE & ER Retirement Contributions	\$ 1,800.18
2977	1/10/2017	Minden Public Schools	Employee FEBA - Medical/Dental	\$ 83.34
2978	1/10/2017	Mps Payroll	EE & ER FICA, Medicare, & Federal Income Tax	\$ 1,698.86
2979	1/10/2017	Mps Payroll NE Income Tax	EE Nebraska Income Tax Withholding	\$ 90.61
2980	1/10/2017	Principal Life Insurance Company	ER Long-Term Disability Premiums	\$ 16.45
Subtotal				\$ 9,685.96
Net Payroll - January 2017				\$ 7,460.66
Total Lunch Fund Disbursements				\$ 17,146.62

Depreciation Fund Disbursements

Check Number	Date	Payee	Reason	Amount
1002	1/10/2017	Central Nebraska Equipment	New HS Auto Shop Car Lifts (x2)	\$ 7,321.00
1002	1/10/2017	Central Nebraska Equipment	New HS Auto Shop Car Lifts Adapter Kits	\$ 933.00
1002	1/10/2017	Central Nebraska Equipment	New HS Auto Shop Car Lifts Installation Labor	\$ 1,000.00
1002	1/10/2017	Central Nebraska Equipment	New HS Auto Shop Car Lifts Rotary Oil	\$ 136.00
Total Depreciation Fund Disbursements - January 2017				\$ 9,390.00

Building Fund Liabilities - New High School Construction

Check Number	Date	Payee	Reason	Amount
EFT	1/10/2017	DLR Group, Inc.	Construction Services - 56% Complete	\$ 15,889.10
EFT	1/10/2017	DLR Group, Inc.	Reimbursable Meals	\$ 29.88
EFT	1/10/2017	DLR Group, Inc.	Reimbursable Mileage/Transportation	\$ 602.10
EFT	1/10/2017	Boyd Jones Construction Co.	CMR Fee - 73.98% Complete	\$ 26,319.53
EFT	1/10/2017	Boyd Jones Construction Co.	Construction Effort - 89.91% Complete	\$ 22,827.00
EFT	1/10/2017	Boyd Jones Construction Co.	Reimbursable Expenses - 51.95% Complete	\$ 14,192.61
EFT	1/10/2017	Boyd Jones Construction Co.	Concrete - 91.52% Complete	\$ 121,334.00
EFT	1/10/2017	Boyd Jones Construction Co.	Door/Frame/Hardware - 96.79% Complete	\$ 77,847.00
EFT	1/10/2017	Boyd Jones Construction Co.	Drywall & Framing - 62.29% Complete	\$ 213,500.00
EFT	1/10/2017	Boyd Jones Construction Co.	Earthwork, Site Demo, Site Utilities, Erosion Control - 67.65% Complete	\$ 550.00
EFT	1/10/2017	Boyd Jones Construction Co.	Educational Casework - 0.44% Complete	\$ 1,700.00
EFT	1/10/2017	Boyd Jones Construction Co.	Electrical - 47.57% Complete	\$ 267,486.88
EFT	1/10/2017	Boyd Jones Construction Co.	Steel/HC/Precast Erection - 98.35% Complete	\$ 1,207.91
EFT	1/10/2017	Boyd Jones Construction Co.	Storefront & Glass - 82.39% Complete	\$ 23,315.30
EFT	1/10/2017	Boyd Jones Construction Co.	Surveying - 133.97% Complete	\$ 744.14
EFT	1/10/2017	Boyd Jones Construction Co.	Waterproofing/Weather Barriers/Sealants/Subdrainage - 51.44% Complete	\$ 3,380.00
EFT	1/10/2017	Boyd Jones Construction Co.	Winter Conditions - 35.13% Complete	\$ 14,101.71
EFT	1/10/2017	Boyd Jones Construction Co.	Woods - 88.23% Complete	\$ 5,969.55
EFT	1/10/2017	Boyd Jones Construction Co.	Flooring - 40.56% Complete	\$ 153,475.00
EFT	1/10/2017	Boyd Jones Construction Co.	General Requirements - 43.20% Complete	\$ 62.71
EFT	1/10/2017	Boyd Jones Construction Co.	Install Doors/Frames/Hardware - 3.73% Complete	\$ 139.01
EFT	1/10/2017	Boyd Jones Construction Co.	Lockers - 78.67% Complete	\$ 29,225.00
EFT	1/10/2017	Boyd Jones Construction Co.	Masonry - 90.45% Complete	\$ 126,736.00
EFT	1/10/2017	Boyd Jones Construction Co.	Mechanical - 72.98% Complete	\$ 324,090.42
Subtotal - Liabilities Paid From Bond Proceeds				\$ 1,444,724.85
474	1/10/2017	Olsson Associates, Inc.	Material Testing Package - 91% Complete	\$ 1,844.85
Subtotal - Liabilities Paid From Existing Building Fund Proceeds				\$ 1,844.85
Total Building Fund Liabilities - New High School Construction - January 2017				\$ 1,446,569.70

Total Minden HS Construction/MS Renovation Billings as of 12/30/2016 - Pay App #20

Item #	Work Description	Original Budget	Owner Change Orders	CM@R Change Orders	Current Budget**	Total Work Previously Completed and Billed	Work Billed This Period	Materials Purchased and Stored	Total Completed & Stored	% Complete	Remaining Balance	Retainage^^
1	Pre-Bond Effort	\$6,527.00			\$6,527.00	\$6,527.00			\$6,527.00	100.00%	\$0.00	\$0.00
1	Pre-Construction Effort	\$35,960.00			\$35,960.00	\$35,858.00			\$35,858.00	100.00%	\$102.00	\$0.00
1	Construction Effort	\$574,628.00			\$574,628.00	\$493,825.43	\$22,827.00		\$516,652.43	89.91%	\$57,975.57	\$0.00
1	Reimbursable Expenses	\$302,846.00			\$302,846.00	\$143,122.77	\$14,192.61		\$157,315.38	51.95%	\$145,530.62	\$0.00
1	General Requirements	\$59,250.00			\$59,250.00	\$25,530.61	\$62.71		\$25,593.32	43.20%	\$33,656.68	\$2,962.50
1	Surveying	\$39,185.00			\$39,185.00	\$51,752.28	\$744.14		\$52,496.42	133.97%	(\$13,311.42)	\$1,959.25
1	Winter Conditions (gas, tenting, covering, blankets, thawing)	\$155,000.00			\$155,000.00	\$40,351.28	\$14,101.71		\$54,452.99	35.13%	\$100,547.01	\$7,750.00
2	Selective Demo in MS	\$50,000.00		\$500.00	\$50,500.00	\$53,426.85			\$53,426.85	105.80%	(\$2,926.85)	\$2,525.00
3	Concrete	\$1,907,377.00	\$19,570.00	\$5,478.00	\$1,932,425.00	\$1,647,127.60	\$121,334.00		\$1,768,461.60	91.52%	\$163,963.40	\$96,621.25
3	Reinforcing	\$225,055.00	\$670.00	\$945.00	\$226,670.00	\$225,079.32			\$225,079.32	99.30%	\$1,590.68	\$11,333.50
3	Hollow Cores	\$165,195.00		\$2,075.00	\$167,270.00	\$155,875.00			\$155,875.00	93.19%	\$11,395.00	\$8,363.50
3	Structural Precast	\$1,349,909.00			\$1,349,909.00	\$1,354,931.00			\$1,354,931.00	100.37%	(\$5,022.00)	\$67,495.45
4	Masonry	\$1,931,600.00			\$1,931,600.00	\$1,620,459.00	\$126,736.00		\$1,747,195.00	90.45%	\$184,405.00	\$96,580.00
5	Steel Fab	\$624,000.00	\$2,917.69	\$3,207.00	\$630,124.69	\$621,907.00			\$621,907.00	98.70%	\$8,217.69	\$31,506.23
5	Steel/HC/Precast Erection	\$604,550.00		\$3,775.00	\$608,325.00	\$597,109.41	\$1,207.91		\$598,317.32	98.35%	\$10,007.68	\$30,416.25
6	Woods	\$104,295.00	\$520.00		\$104,815.00	\$86,504.16	\$5,969.55		\$92,473.71	88.23%	\$12,341.29	\$5,240.75
7	Waterproofing/Weather Barriers/Sealants/Subdrainage	\$177,000.00			\$177,000.00	\$87,662.39	\$3,380.00		\$91,042.39	51.44%	\$85,957.61	\$8,850.00
7	Insulated Metal Wall Panels (to Composite Wall Panels)	\$0.00			\$0.00				\$0.00	0.00%	\$0.00	\$0.00
7	Composite Wall Panels	\$182,490.00			\$182,490.00	\$4,000.00			\$4,000.00	2.19%	\$178,490.00	\$9,124.50
7	Roofing	\$544,590.00		\$373.27	\$544,963.27	\$509,810.00			\$509,810.00	93.55%	\$35,153.27	\$27,248.16
7	Fireproofing	\$13,500.00			\$13,500.00				\$0.00	0.00%	\$13,500.00	\$675.00
7	Expansion Joint Covers	\$20,257.00			\$20,257.00	\$1,535.00			\$1,535.00	7.58%	\$18,722.00	\$1,012.85
8	Door/Frame/Hardware	\$345,373.00		\$11,550.00	\$356,923.00	\$267,620.00	\$77,847.00		\$345,467.00	96.79%	\$11,456.00	\$17,846.15
8	Install Doors/Frames/HW	\$78,056.00		\$350.00	\$78,406.00	\$2,786.40	\$139.01		\$2,925.41	3.73%	\$75,480.59	\$3,920.30
8	Access Doors	\$5,650.00			\$5,650.00				\$0.00	0.00%	\$5,650.00	\$282.50
8	OH and Coiling Doors	\$73,673.00			\$73,673.00	\$18,210.00			\$18,210.00	24.72%	\$55,463.00	\$3,683.65
8	Storefront and Glass	\$331,198.00		(\$8,555.00)	\$322,643.00	\$242,512.70	\$23,315.30		\$265,828.00	82.39%	\$56,815.00	\$16,132.15
9	Drywall & Framing	\$539,260.00		\$54,730.00	\$593,990.00	\$156,500.00	\$213,500.00		\$370,000.00	62.29%	\$223,990.00	\$29,699.50
9	Tiling (to Flooring)	\$0.00			\$0.00				\$0.00	0.00%	\$0.00	\$0.00
9	Acoustical Tile Ceilings & Acoustical Panels	\$192,900.00		\$480.00	\$193,380.00	\$6,041.99			\$6,041.99	3.12%	\$187,338.01	\$9,669.00
9	Flooring (LVT, Carpet, Tile & Terrazzo)	\$316,880.00	\$145,377.55	\$3,606.00	\$465,863.55	\$35,475.00	\$153,475.00		\$188,950.00	40.56%	\$276,913.55	\$23,293.18
9	Wood Flooring	\$122,760.00			\$122,760.00				\$0.00	0.00%	\$122,760.00	\$6,138.00
9	Concrete Treated Flooring Systems	\$43,115.00			\$43,115.00				\$0.00	0.00%	\$43,115.00	\$2,155.75
9	Painting/Air Barriers/Water Repellents	\$377,289.00			\$377,289.00	\$76,753.00			\$76,753.00	20.34%	\$300,536.00	\$18,864.45
10	Toilet Partitions/Accessories/Specialties/Visual Display Boards	\$119,580.00			\$119,580.00	\$301.95			\$301.95	0.25%	\$119,278.05	\$5,979.00
10	Visual Display Boards (to Toilet Accessories)	\$0.00			\$0.00				\$0.00	0.00%	\$0.00	\$0.00
10	Signage	\$33,649.00			\$33,649.00				\$0.00	0.00%	\$33,649.00	\$1,682.45
10	Lockers	\$84,350.00	(\$3,350.00)		\$81,000.00	\$34,500.00	\$29,225.00		\$63,725.00	78.67%	\$17,275.00	\$4,050.00
10	Flagpoles	\$5,280.00			\$5,280.00				\$0.00	0.00%	\$5,280.00	\$264.00
11	Knox Boxes	\$2,750.00			\$2,750.00	\$2,200.03			\$2,200.03	80.00%	\$549.97	\$137.50
11	Paint Spray Booth	\$27,650.00			\$27,650.00				\$0.00	0.00%	\$27,650.00	\$1,382.50
11	Stage Rigging & Curtains	\$58,406.00		\$720.00	\$59,126.00				\$0.00	0.00%	\$59,126.00	\$2,956.30
11	Athletic Equipment	\$41,150.00			\$41,150.00				\$0.00	0.00%	\$41,150.00	\$2,057.50
12	Educational Casework	\$380,313.00	\$4,084.50		\$384,397.50		\$1,700.00		\$1,700.00	0.44%	\$382,697.50	\$19,219.88
12	Auditorium Seating	\$75,498.00			\$75,498.00				\$0.00	0.00%	\$75,498.00	\$3,774.90
12	Bleachers (500 seats)	\$50,061.00			\$50,061.00				\$0.00	0.00%	\$50,061.00	\$2,503.05
14	Elevator	\$66,400.00			\$66,400.00	\$49,800.00			\$49,800.00	75.00%	\$16,600.00	\$3,320.00
21	Fire Sprinkler	\$192,500.00			\$192,500.00	\$141,800.00			\$141,800.00	73.66%	\$50,700.00	\$9,625.00
23	Mechanical	\$4,185,000.00	\$8,030.00	\$17,392.00	\$4,210,422.00	\$2,748,525.68	\$324,090.42		\$3,072,616.10	72.98%	\$1,137,805.90	\$210,521.10
26	Electrical	\$2,883,163.00	\$9,091.93	\$52,615.01	\$2,944,869.94	\$1,133,358.76	\$267,486.88		\$1,400,845.64	47.57%	\$1,544,024.30	\$147,243.50
31	Earthwork, Site Demo, Site Utilities, Erosion Control	\$683,074.00	\$7,100.00	\$2,200.00	\$692,374.00	\$467,837.11	\$550.00		\$468,387.11	67.65%	\$223,986.89	\$34,618.70
31	Termite Control	\$8,100.00			\$8,100.00	\$8,100.00			\$8,100.00	100.00%	\$0.00	\$405.00
31	Helical Piers	\$50,100.00			\$50,100.00	\$46,540.00			\$46,540.00	92.89%	\$3,560.00	\$2,505.00
32	Pavement Striping/Sealants/Signs	\$12,740.00	\$200.00	\$10,222.00	\$23,162.00	\$1,000.00			\$1,000.00	4.32%	\$22,162.00	\$1,158.10
32	Fencing	\$25,240.00			\$25,240.00				\$0.00	0.00%	\$25,240.00	\$1,262.00
32	Segmental Retaining Walls	\$66,657.00			\$66,657.00	\$60,635.00			\$60,635.00	90.97%	\$6,022.00	\$3,332.85

Total Minden HS Construction/MS Renovation Billings as of 12/30/2016 - Pay App #20

Item #	Work Description	Original Budget	Owner Change Orders	CM@R Change Orders	Current Budget**	Total Work Previously Completed and Billed	Work Billed This Period	Materials Purchased and Stored	Total Completed & Stored	% Complete	Remaining Balance	Retainage^^
32	Landscaping	\$66,249.00	\$47,850.00	\$325.00	\$114,424.00	\$13.89			\$13.89	0.01%	\$114,410.11	\$5,721.20
32	Utility Relocation	\$255,165.00	\$17,807.66		\$272,972.66	\$252,083.08			\$252,083.08	92.35%	\$20,889.58	\$13,648.63
32	Private Utilities	\$187,000.00	\$49,038.00	\$4,000.00	\$240,038.00	\$243,033.00			\$243,033.00	101.25%	(\$2,995.00)	\$12,001.90
32	Subdrainage (to Waterproofing)	\$0.00			\$0.00	\$0.00			\$0.00	0.00%	\$0.00	\$0.00
33	CMR Fee (3.28%)	\$660,575.00	\$10,328.96	\$5,449.09	\$676,353.05	\$474,020.32	\$26,319.53		\$500,339.85	73.98%	\$176,013.20	\$33,817.65
34	Subcontractor Bond Allowance	\$150,000.00			\$150,000.00	\$142,285.00			\$142,285.00	94.86%	\$7,715.00	\$7,500.00
35	CMR Bond	\$118,605.00	\$2,862.07	\$1,504.47	\$122,971.54	\$118,605.00			\$118,605.00	96.45%	\$4,366.54	\$0.00
36	2% CMR Contingency	\$432,861.00	\$6,000.00	(\$172,941.84)	\$265,919.16				\$0.00	0.00%	\$265,919.16	\$0.00
	Total	\$22,421,484.00	\$328,098.36	\$0.00	\$22,749,582.36	\$14,492,932.01	\$1,428,203.77	\$0.00	\$15,921,135.78	69.98%	\$6,828,446.58	\$1,072,036.53

** Based on October 7, 2015 GMP budget provided by Boyd Jones Construction after 100% Construction Documents were released plus/minus any approved change orders.

^^ Now that project is 50% complete, retainage is withheld on 5% of the total Current Budget cost for each line item for which retainage is required to be withheld. The entire 5% retainage level has been reached for the project, hence, no more retainage will be withheld from payment except in the case of any future Owner Change Orders. Retainage of 5% will be withheld on the total amount of any future owner change orders as they will effectively raise the GMP (Current Budget) of the project.

Bank Statement Reconciliation

Description

Adjustment Date

Adjustment Amount

Minden High School 12/01/2016 through 12/31/2016

Bank Statement Reconciliation Summary

Statement Balance	\$ 155,807.52
- Outstanding checks	\$ 7,534.47
+ Outstanding Deposits	\$ 0.00
+ Outstanding Adjustments	\$ 0.00
- Outstanding Investment Transfers	\$ 0.00
Total	<hr/> \$ 148,273.05
+ Investments	\$ 37,000.00
Book Balance	<hr/> \$ 185,273.05

Checks For Payment Listing

Date	Check Number	Payee	Reason	Amount
01/10/2017	EFT	Minden Exchange Bank - EFT	Direct Deposit Fees	\$ 35.20
01/10/2017	34069	Ameritas Life Insurance Corp.	Ameritas Tsa	\$ 250.00
01/10/2017	34070	Annuities Service Center	Prudential Tsa	\$ 250.00
01/10/2017	34071	Blue Cross Blue Shield	Dental Insurance	\$ 684.22
01/10/2017	34071	Blue Cross Blue Shield	District Dental Insurance	\$ 144.96
01/10/2017	34071	Blue Cross Blue Shield	District Health Ins 2PT	\$ 24,142.23
01/10/2017	34071	Blue Cross Blue Shield	District Health Ins 9 Mo	\$ 12,273.26
01/10/2017	34071	Blue Cross Blue Shield	District Health Ins FAM	\$ 75,193.93
01/10/2017	34071	Blue Cross Blue Shield	District Health Ins SNG	\$ 6,736.20
01/10/2017	34071	Blue Cross Blue Shield	District Health Ins SPD	\$ 4,063.80
01/10/2017	34071	Blue Cross Blue Shield	District Health Ins Split	\$ 1,534.57
01/10/2017	34071	Blue Cross Blue Shield	Feba Bcbs Dental 2PT	\$ 320.98
01/10/2017	34071	Blue Cross Blue Shield	Feba Bcbs Dental FAM	\$ 1,014.72
01/10/2017	34071	Blue Cross Blue Shield	Feba Bcbs Dental SPD	\$ 112.70
01/10/2017	34071	Blue Cross Blue Shield	Health Insurance	\$ 1,097.76
01/10/2017	34072	Horace Mann Life Insurance Company	Horace Mann Life Insurance	\$ 4,225.00
01/10/2017	34073	Madison National Life Insurance Co., Inc.	Feba Life Insurance	\$ 364.40
01/10/2017	34073	Madison National Life Insurance Co., Inc.	Term Life Policy	\$ 500.75
01/10/2017	34074	Minden Public Schools	District Court	\$ 806.00
01/10/2017	34074	Minden Public Schools	F/b Dependent Care	\$ 3,466.70
01/10/2017	34074	Minden Public Schools	F/b Medical Dental	\$ 5,018.48
01/10/2017	34074	Minden Public Schools	Increased Retirement Percent	\$ 11,514.83
01/10/2017	34074	Minden Public Schools	NE Retirement	\$ 78,131.47
01/10/2017	34075	Mps Payroll	Federal Withholding	\$ 43,825.44
01/10/2017	34075	Mps Payroll	FICA	\$ 57,095.84
01/10/2017	34075	Mps Payroll	Medicare	\$ 13,353.24
01/10/2017	34076	Mps Payroll NE Income Tax	State Withholding - NE	\$ 15,157.03
01/10/2017	34077	New York Life	Ny Life Tsa	\$ 200.00
01/10/2017	34078	Pacific Life	Pacific Life	\$ 300.00
01/10/2017	34079	Principal Life Insurance Company	Long-Term Disability	\$ 1,824.37
01/10/2017	34080	A-1 Refrigeration	Bus Barn Furnace Repair	\$ 58.90
01/10/2017	34081	Aurora Cooperative	Fuel	\$ 11,589.23
01/10/2017	34082	Bill's Plumbing	East Plumbing Repairs	\$ 80.45
01/10/2017	34083	Black Hills Energy	Activity Building Natural Gas	\$ 1,889.46
01/10/2017	34083	Black Hills Energy	Bus Barn Natural Gas	\$ 469.13
01/10/2017	34083	Black Hills Energy	East Natural Gas	\$ 2,088.10
01/10/2017	34083	Black Hills Energy	HS Natural Gas	\$ 4,087.84
01/10/2017	34083	Black Hills Energy	MS/New HS Natural Gas	\$ 10,466.63
01/10/2017	34084	Cardmember Service	MS Computer Supplies	\$ 13.85
01/10/2017	34084	Cardmember Service	MS Principal keyboard Return	\$ (22.02)
01/10/2017	34084	Cardmember Service	MS Principal Keypad	\$ 32.04
01/10/2017	34084	Cardmember Service	School Nurse Supplies	\$ 20.04
01/10/2017	34084	Cardmember Service	StrivTV Equipment	\$ 224.92
01/10/2017	34085	Cash-wa Distributing Co.	Custodial Supplies	\$ 25.00
01/10/2017	34085	Cash-wa Distributing Co.	Ice Machine Filter	\$ 91.92
01/10/2017	34086	Central Fire & Safety, Inc.	East Fire System Service	\$ 168.50
01/10/2017	34086	Central Fire & Safety, Inc.	MS Fire System Service	\$ 211.00
01/10/2017	34087	Century Link Long Distance	District Long Distance	\$ 174.55
01/10/2017	34088	CenturyLink - Regular Telephone	Activity Director Telephone	\$ 13.96
01/10/2017	34088	CenturyLink - Regular Telephone	Bus Barn Telephone	\$ 29.28
01/10/2017	34088	CenturyLink - Regular Telephone	District Emergency Line	\$ 7.62
01/10/2017	34088	CenturyLink - Regular Telephone	District Fax Line	\$ 11.49
01/10/2017	34088	CenturyLink - Regular Telephone	East Telephone	\$ 98.16
01/10/2017	34088	CenturyLink - Regular Telephone	HS Fax Line	\$ 4.30
01/10/2017	34088	CenturyLink - Regular Telephone	HS Telephone	\$ 11.30
01/10/2017	34088	CenturyLink - Regular Telephone	MS Telephone	\$ 13.50
01/10/2017	34088	CenturyLink - Regular Telephone	Preschool Telephone	\$ 4.71
01/10/2017	34089	Charter Communications	Distance Learning Services	\$ 240.18
01/10/2017	34090	City Of Minden	Utilities	\$ 14,780.84
01/10/2017	34091	Computer Hardware, Inc.	MS Projector	\$ 864.78

Checks For Payment Listing

Date	Check Number	Payee	Reason	Amount
01/10/2017	34092	Conditioned Air Mechanical Systems & Service	HVAC Repairs	\$ 2,400.00
01/10/2017	34093	Cornhusker International Trucks, Inc.	Bus 14A & 14B Repair	\$ 148.14
01/10/2017	34094	Cummins Central Power, LLC	Activity Transit Repair	\$ 416.10
01/10/2017	34095	D & M Security, Inc.	Alarm Monitoring	\$ 225.00
01/10/2017	34096	DAS State Accounting - Central Finance	Distance Learning Services	\$ 238.96
01/10/2017	34097	Dollar General	East Life Skills Supplies	\$ 24.35
01/10/2017	34098	Educational Service Unit #10	MS SPED Workshop	\$ 50.00
01/10/2017	34098	Educational Service Unit #10	School Age Deaf Ed Services	\$ 112.86
01/10/2017	34099	Egan Supply Co.	Custodial Supplies	\$ 140.74
01/10/2017	34100	Eletech, Inc.	HS Elevator Maintenance Agreement	\$ 196.70
01/10/2017	34101	Family Physical Therapy & Sports Center, P.C.	OT & PT Services	\$ 3,080.50
01/10/2017	34102	First Advantage Occupational Health Service Corp.	Bus Driver Alcohol Testing	\$ 10.00
01/10/2017	34103	Hastings Tribune	Employment Advertising	\$ 137.60
01/10/2017	34104	Hometown Leasing	Printer & Copier Lease	\$ 2,734.54
01/10/2017	34105	Jim's OK Tire Store, Inc.	Bus 5A and HC Van Tires	\$ 964.00
01/10/2017	34105	Jim's OK Tire Store, Inc.	Coach Bus Tire Mounting	\$ 80.00
01/10/2017	34105	Jim's OK Tire Store, Inc.	Van 7V1 & 7V2 Tires	\$ 656.00
01/10/2017	34106	Joy's Floral & Gifts	Board Well Wishes	\$ 30.00
01/10/2017	34107	JW Pepper & Son, Inc.	HS Winter Concert Music	\$ 24.24
01/10/2017	34107	JW Pepper & Son, Inc.	MS Winter Concert Music	\$ 38.00
01/10/2017	34108	Kearney Centre Vacuum	ProTeam Vacuum Parts	\$ 49.95
01/10/2017	34109	Kearney County Clerk	General Election Fees	\$ 1,025.59
01/10/2017	34110	Kearney County Health Services	Bus Driver Physical	\$ 501.00
01/10/2017	34111	Kearney Winnelson Co.	Bus Barn Water Heater	\$ 469.81
01/10/2017	34112	Landmark Implement Carquest	89 Pickup Repair	\$ 140.83
01/10/2017	34112	Landmark Implement Carquest	Bus 5A Repair	\$ 252.79
01/10/2017	34112	Landmark Implement Carquest	Bus Barn Supplies	\$ 27.17
01/10/2017	34112	Landmark Implement Carquest	Bus Oil & Fuel Filters	\$ 365.72
01/10/2017	34112	Landmark Implement Carquest	Coach Bus Repair	\$ 208.38
01/10/2017	34112	Landmark Implement Carquest	Fuel Treatment	\$ 87.00
01/10/2017	34112	Landmark Implement Carquest	Fuel Treatment & Bus 5A Repair	\$ 349.75
01/10/2017	34112	Landmark Implement Carquest	Oil Filters	\$ 11.59
01/10/2017	34112	Landmark Implement Carquest	Van 5V1 Brake Repair	\$ 106.13
01/10/2017	34112	Landmark Implement Carquest	Van 7V1 Repair	\$ 38.78
01/10/2017	34113	Mason's Market	1st Grade Supplies	\$ 48.25
01/10/2017	34113	Mason's Market	East Life Skills Supplies	\$ 10.93
01/10/2017	34113	Mason's Market	FCS Supplies	\$ 218.21
01/10/2017	34113	Mason's Market	Kindergarten Supplies	\$ 11.79
01/10/2017	34113	Mason's Market	MS Life Skills Supplies	\$ 33.88
01/10/2017	34113	Mason's Market	MS Science Supplies	\$ 26.36
01/10/2017	34113	Mason's Market	Water Softener Salt	\$ 34.32
01/10/2017	34114	Matheson Tri-Gas, Inc.	Bus Barn Welding Supplies	\$ 160.99
01/10/2017	34115	Mid-States Automation & Control, Inc.	HVAC Repairs	\$ 3,920.70
01/10/2017	34116	Midway Chrysler Dodge Jeep Ram	Van 7V1 Repair	\$ 115.58
01/10/2017	34117	Minden Courier	Board Postings	\$ 98.45
01/10/2017	34118	Minden Hardware	Maintenance, Tools, & Supplies	\$ 321.52
01/10/2017	34119	Minden Lawn and Sprinkler, LLC	FB Fields & Outdoor Classroom Sprinkler Repairs	\$ 1,399.84
01/10/2017	34120	Minden Lumber & Concrete	East Repairs	\$ 41.43
01/10/2017	34120	Minden Lumber & Concrete	Ice Melt	\$ 89.94
01/10/2017	34121	Minden Machine Shop, Inc.	Football Field Drain Grates	\$ 811.86
01/10/2017	34122	Minden Office Supply	Bus Barn Supplies	\$ 8.03
01/10/2017	34123	Mitinet, Inc.	HS Media Center Software Renewal	\$ 329.00
01/10/2017	34124	Movie Licensing USA	Public Performance Site Licenses	\$ 870.00
01/10/2017	34125	Mps Petty Cash	Postage	\$ 26.19
01/10/2017	34126	Napa Auto Parts	89 Pickup Repair	\$ 73.08
01/10/2017	34126	Napa Auto Parts	Antifreeze	\$ 19.20
01/10/2017	34126	Napa Auto Parts	Bus 5A Repair	\$ 94.90
01/10/2017	34126	Napa Auto Parts	Fuel Additive	\$ 11.99
01/10/2017	34127	NCSA	NAESP/NSASSP Principals Conference	\$ 160.00
01/10/2017	34128	Nebraska Central Equipment	Bus 5A Auxiliary Water Pump	\$ 169.20

Checks For Payment Listing

Date	Check Number	Payee	Reason	Amount
01/10/2017	34129	Nebraska Truck Center, Inc.	Coach Bus Alternator Repair	\$ 547.87
01/10/2017	34130	One Source	December Background Checks	\$ 16.00
01/10/2017	34131	Pavelka Truck & Trailer Repair	Bus 96A Repair	\$ 657.32
01/10/2017	34131	Pavelka Truck & Trailer Repair	Bus Code Clearing	\$ 582.70
01/10/2017	34132	PowerSchool Group, LLC	PowerSchool Service Renewal	\$ 7,609.00
01/10/2017	34133	Repair Zoom, LLC	MS iPad Repairs	\$ 519.96
01/10/2017	34134	Sapp Bros. Petroleum, Inc	Bus Oil	\$ 192.00
01/10/2017	34135	Schmitt Music Company	HS Band Timpani Mallets	\$ 31.51
01/10/2017	34136	Supplyworks	Floor Scrubber Repair	\$ 19.06
01/10/2017	34137	Thomson West	SPED Law Bulletin	\$ 136.45
01/10/2017	34138	Tom Dinsdale Automotive, Inc.	Bus 5A Repair	\$ 325.41
01/10/2017	34139	Tri-County Glass, Inc.	Bus Window Replacement	\$ 80.00
01/10/2017	34140	Village Uniform	Custodial Supplies	\$ 1,474.72
01/10/2017	34141	Wilson Automotive	Tire Repairs	\$ 36.00
01/10/2017	34142	Woodward's Disposal Service, Inc.	Shredding Service	\$ 52.00
01/10/2017	34143	Wright Express Fleet Services	Fuel Purchases	\$ 484.37
Subtotal				\$ 448,599.97
Net Payroll - January 2017				\$ 313,329.79
Total General Fund Disbursements - January 2017				\$ 761,929.76

Secretary _____

Superintendent's Report

January 2017

Election of Officers

The first order of business will be to elect officers of the board for the 2017 year.

Committees

We will need to discuss our committee assignments. The committees are: personnel, policies, buildings/grounds, finance, curriculum, and legislation.

Current committee assignments were:

Personnel: Craig, Kevin

Policies: Justin, Ken

Blds./Grs: Craig, Richard, Ken

Finance: Richard, Craig, Kevin

Curriculum: Rusty, Kevin

Legislation: Rusty, Justin

Americanism: Justin, Craig, Kevin

Community Flyer

The administrative team is working on their articles for the annual report to patrons, and the Minden Courier will be compiling it for the flyer.

Legislative Conference

The deadline for registering for the Legislative conference in Lincoln is January 16th. These are the board members that have been registered: Ken, Rusty, and Justin.

February Board Meeting

Monday, February 13th at 5:00 pm

MINDEN PUBLIC SCHOOLS
ACTIVITIES/ATHLETIC DEPARTMENT

*Phillip Hoyt, Assistant Principal
Activities Director*

*325 North Yates Avenue
Minden, NE 68959-1598
308-832-2254 School
308-832-1892 Fax*

**JANUARY 2017 BOARD MEETING
ACTIVITIES DIRECTOR REPORT**

The girls and boys basketball teams have competed well through December and have continued playing in January. The girls are 6-4 right now and the boys are 2-7. Both the boys and girls teams played in the Southern Valley Holiday Tournament over the break with the girls finishing 2nd. Both teams competed against Ainsworth and Valentine Jan 6-7. The teams play at home against Ravenna and Hastings St. Cecilia on Jan 10 and 12. Parents Night for both basketball teams will be before the girls and boys games against Ravenna. TeamMates recognition night will be at halftime of the girls varsity game against Ravenna.

The high school wrestling team finished 2nd at the Axtell Invite on Dec 13 and finished 3rd at the Fillmore Central Invite on Dec 20. The team defeated St Paul 39-30 in a Dual on Jan 5. They competed at the Franklin Invite on Jan 7 and will host the Minden Invite on Jan 13 starting at 3:00. Teams competing in the invite are Broken Bow, Cozad, Franklin, Cambridge, Centennial, and Minden. Tysen McDowell is 13-1 at 195 lbs. and Jonathan Johnson is 10-4 at 170 lbs. at this time.

The Minden Speech Team's 35 members have been preparing for their season to begin and competed in their first meet at Adams Central on Jan 7. The team will continue competitions at GISH on Jan 14 and Broken Bow on Jan 21. Good luck to the team as they start their season.

Jr. high boys basketball has begun practice with 17- 8th graders and 18 - 7th graders participating. The 7th graders will participate in the Gothenburg Jamboree games on Jan 14, and the 8th graders will participate in the Minden Jamboree games on January 14. Both will be starting at 9:00.

The Minden High School Pep Band will continue to perform at home contests this winter and the UNK Honor Band/Choir Clinic will be held on January 23. Sydney Wilson and Caleb Hazard will represent Minden in the band section. Grant Alberts, Lucas Lahr, John Kucharski, Rhiannon Pracht, Megan Rothfuss, Lily Van Dusen, and Alexas Kuehn will represent Minden in the vocal section. The high school vocal groups are preparing for the show choir competitions on February 3 in Central City and Feb 10 at UNO.

Minden High School Cheerleaders and Dance Teams have continued to support our winter sports teams by cheering at home/away basketball and wrestling contests along with performing at halftime of home basketball games. We thank them for their positive support and efforts this winter.

**Minden High School
Nebraska Chiropractic Physicians Association (NCPA)
Fall 2016 Academic All-State Awards**

**Girls Cross Country – Alexandra Bauer, Chloe Beck
Boys Cross Country – Andrew Hultquist, Aidan Wheelock
Football – Jacob Chasek, Justin Villars
Play Production – Aurora Fowler, Courtney Thompson
Softball - Lindsay Scanlan, Trinity Olson
Volleyball - Robin Carlson, Samantha Clapper**

Minden Public Schools, Board of Education Report January, 2017

The annual Art/P.E./Music show was held on December 12th. It served as an outstanding showcase of the abundance of talent within the East Elementary student body and staff. Mrs. Bloomfield, Mr. Rowse, and Mrs. Rowley highlighted the students' strengths with singing, musical instruments, active coordination stations and routines, and beautiful artwork pieces. We take pride in our students behaviors and talents during evenings such as these.

Students in grades kindergarten through third took the Measurement of Academic Progress assessment during the month of December. In grades kindergarten and first, the students were assessed over their reading and math skills. Second and third graders took a reading, math, and language arts assessment. This assessment fluctuates difficulty levels individually as students answer questions right or wrong. Therefore, it works to accurately measure the students' instructional level.

After MAPS assessments were taken, East Elementary held a day of staffings. During staffings, each grade level had a time where we came together with specialists to form a collaboration team. Each team analyzed each students' MAPS scores and focused on measurably progressing as well as areas of strengths and needs. The team also took into account other factors that contribute to the students success. Adjustments in interventions or services are discussed to ensure each student is receiving what they need to be their best at school.

East teachers have been reviewing and considering several math curriculum samples for the upcoming adoption. Teachers have been guided to evaluate what they feel as necessary in a curriculum and what curriculum best meets the needs of our students and instructional format.

Along with the growth of our students, East is also very proud of our instructional practice growth as well. Teachers continue to learn, collaborate, and implement Marzano instructional strategies. We are working to use a growth mindset and constantly fine tune and hone our skills to maintain a high quality environment for students.

A visit from the North Pole capped off first semester nicely. Students enjoyed singing carols and telling Santa what was on their wish list.

Words from the students:

"My teacher makes me really happy in her class. She makes me want to learn."-Cael S.

"My teacher has a dog named Ed and that's how she taught me to add -ed to verbs that are in the past. I can always remember that now."-Arik S.

"My teacher has a lot of tricks to help me remember what we learn. She is so fun!"-Isabelle M.

Minden High School

January 2017

Board of Education Report

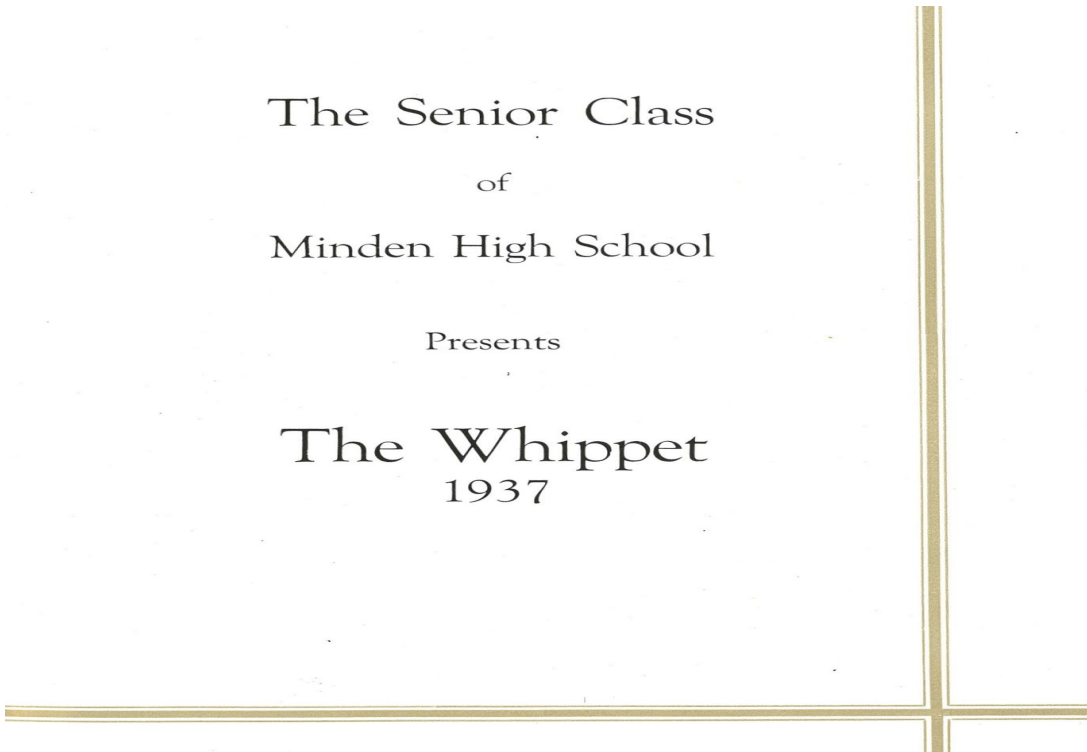


This month I broke away from my more traditional board report to share a few pages from the 1937 Minden High School Yearbook. In the Fall of 1936, there were 285 students that attended high school in the new building. That included sixty-nine seniors, seventy-seven juniors, seventy-seven sophomores, and sixty-two freshman. As look through the 1937 Yearbook it is easy to see the excitement the students, staff, and community had for their new building and all the wonderful possibilities a new facility could offer them. We are now seeing that same excitement eighty years later as we anxiously await the completion of our new Minden High School.

The Senior Class
of
Minden High School

Presents

The Whippet
1937





1900-1936
Minden High School

1900-1936
Minden High School



FAREWELL

Dear school whose roof has sheltered us so long,
Whose walls are marked by names of students bold,
We leave you now because you have grown old.
"Farewell," we shout to you with cheers and song.
We know you served your purpose well. The throng
Of happy folks o'er whom the years have rolled
Are pleased and eager to the tale unfold
That they to Minden High School did belong.
But though our days within your walls are through,
Though we may look on you, dear school, no more,
Yet in our memory shall ever be
The happiness of days we spent with you.
So now, old friend that once we did adore,
With reverent tone we say, "farewell to thee."

—Mildred Monson

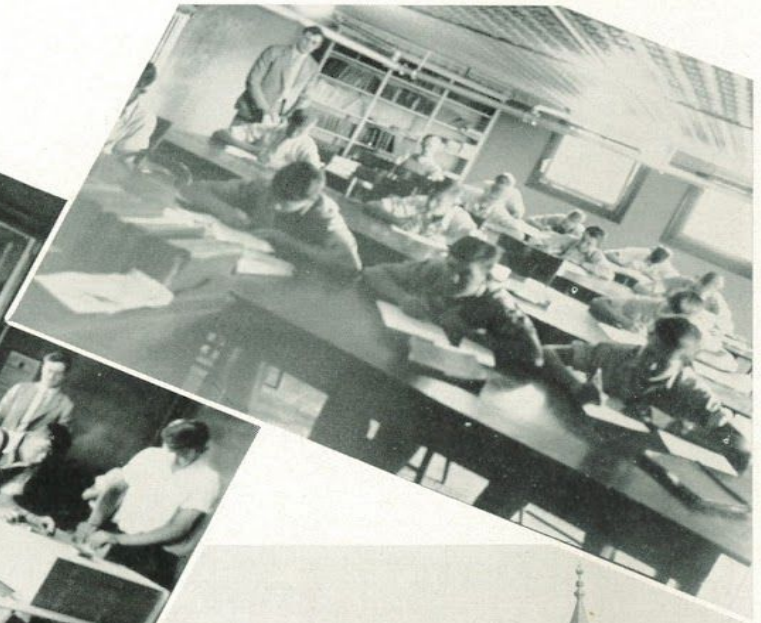


WELCOME

Behold our grand new school! She is queen,
For now the glorious morning of her day
Is here. Let every student now be gay
For a finer school has never been.
So there she stands so strong and so serene,
A scene of education and of play.
Her light and airy rooms and halls display
Completeness and beauty in a blended scene.
O lovely school so beautiful and new,
Your task it is to train the present youth.
And may you guide us to a destiny
Of noble lives that echo your praise anew.
Our pleasant privilege it is, in truth,
Heartily to bid you Welcome to our City.

—Mildred Monson

(written by Mildred Monson- Minden High Sr. 1937)



Ag. Shop

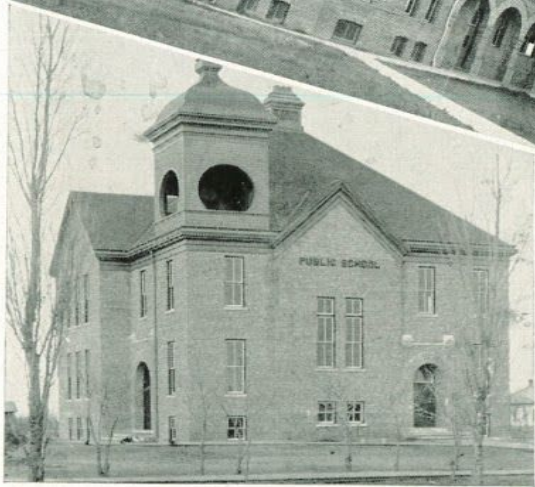
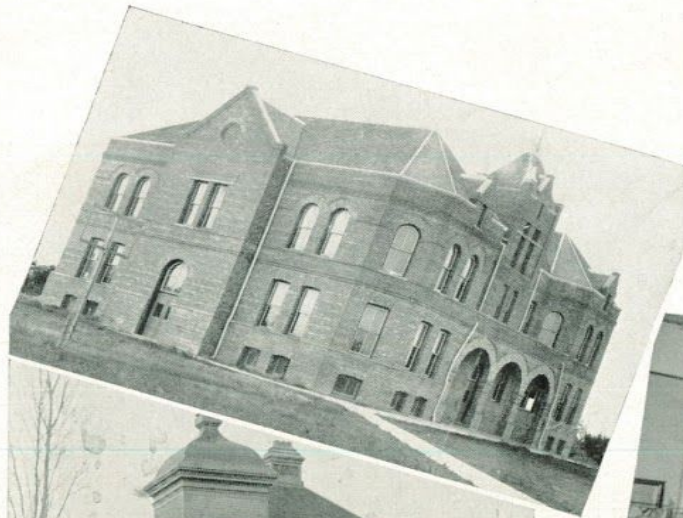
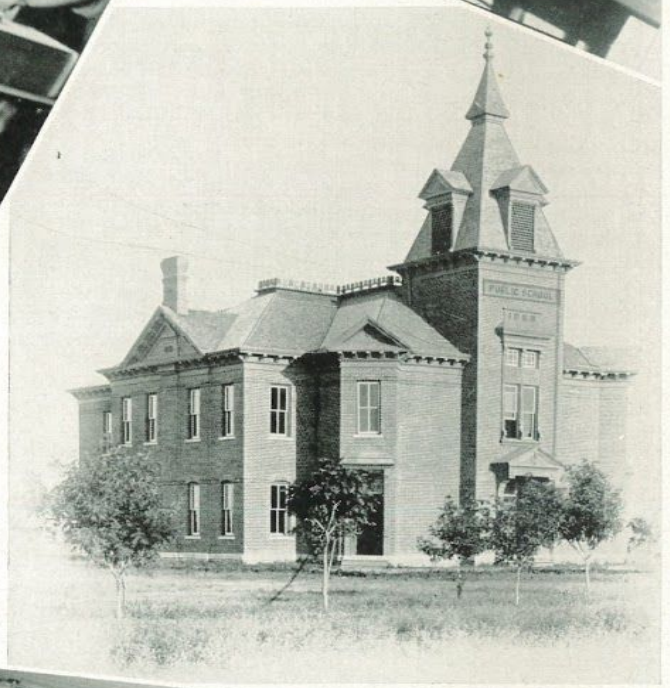
Ag. Classroom

Grade School, 1886-1925

High School, 1900-1936

High School, 1893-1899

Home Economics Room



Upper views show the vocational agriculture class room and shop in the high school building abandoned in 1937, while the lower right picture shows the home economics room in the same building.

Center picture shows the elementary building constructed in 1886. To the left of this is the picture of the old high school building, just abandoned, as it appeared before it was remodeled in 1912. This building, completed in 1900, replaced the building pictured just below it which was constructed in 1893 and destroyed by fire in 1899.



Ag. Classroom

Ag. Shop

Grade School, 1925

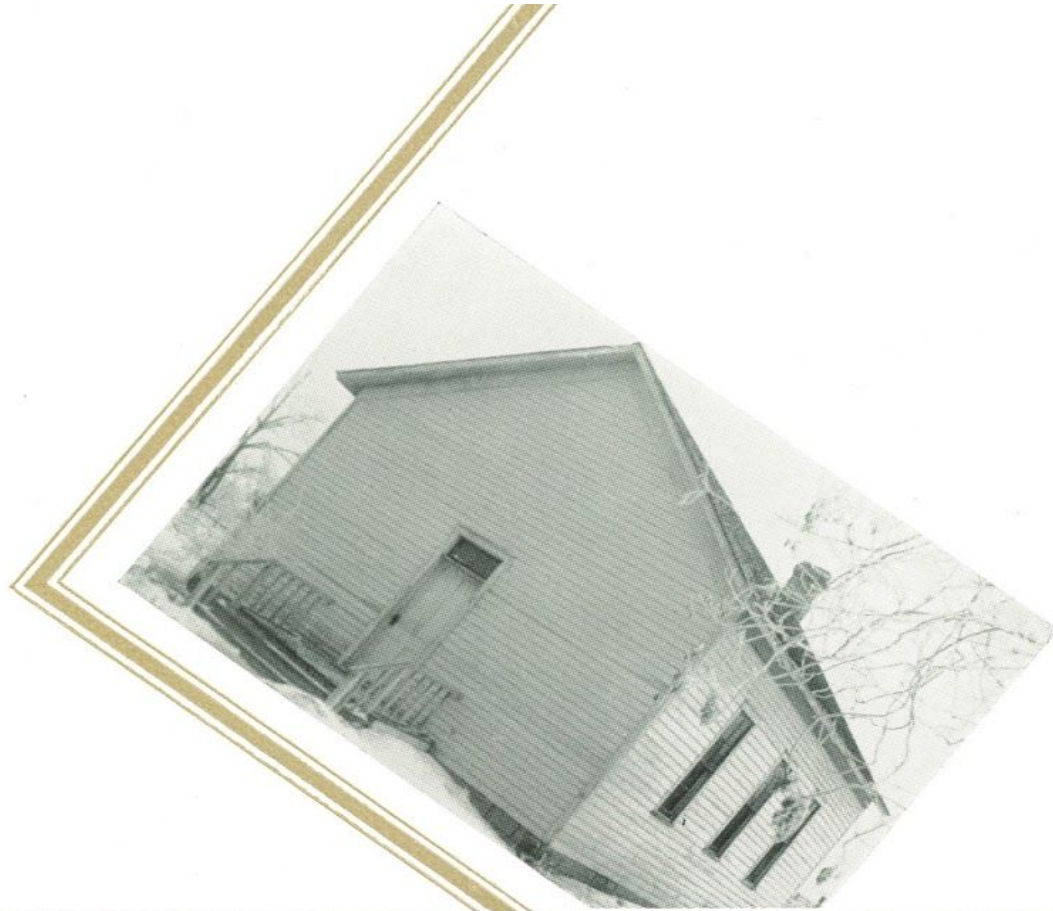
Cooking Laboratory

Sewing Laboratory



Center picture shows the present elementary school building erected in 1925. The upper views tell the story of the classroom and shop of the vocational agriculture department of the 1936 high school building, while the lower pictures show the home economics department in the same building.

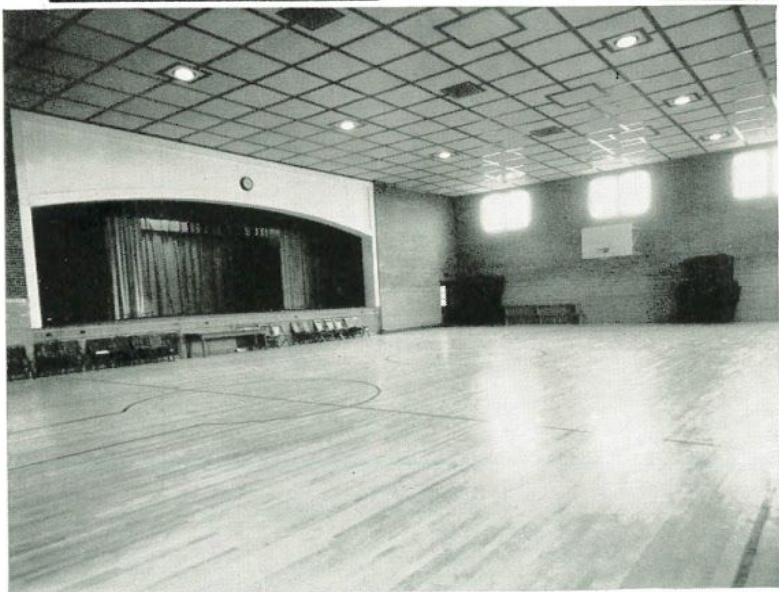
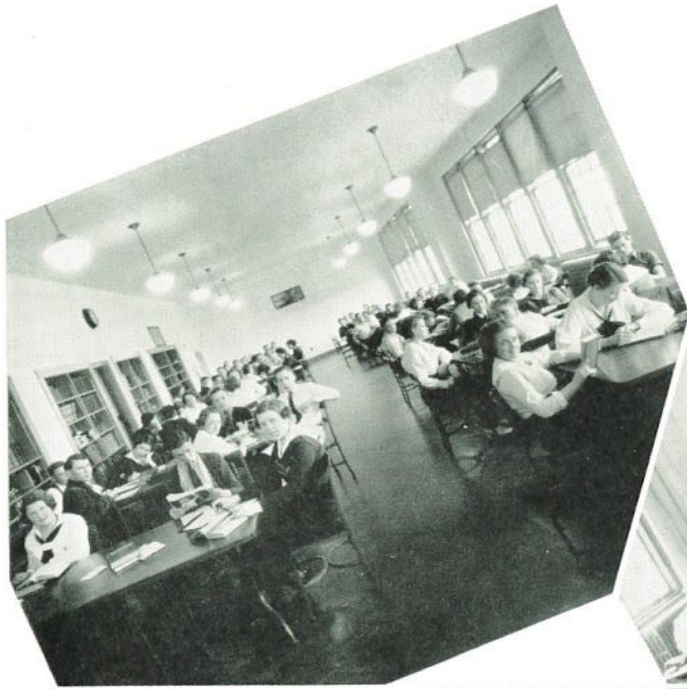
Pictorial Section



HISTORY OF MINDEN SCHOOLS

Picturing the progress of education in Minden as shown by the different school buildings.

Upper picture shows the first frame building accepted by District No. 10 in 1877 which is now used as the Danish Mission Church and stands on the original site. Lower picture shows the new high school building erected in 1936.



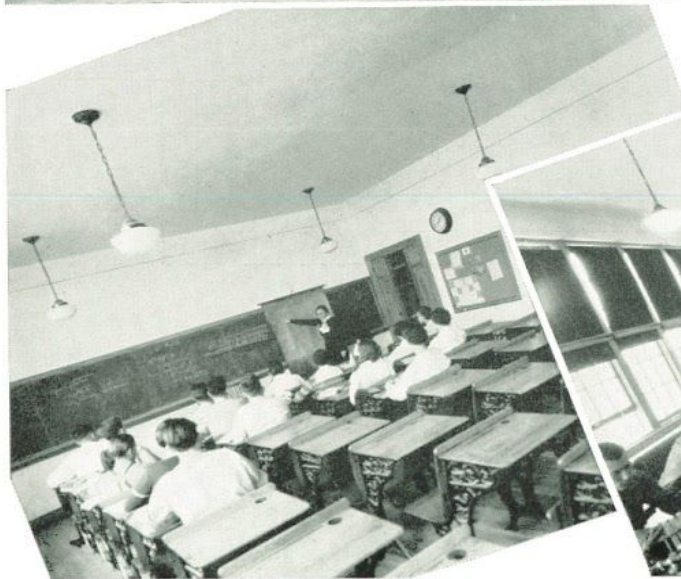
Upper Left—Library

Upper Right—Commercial

Center—Auditorium and
Gymnasium

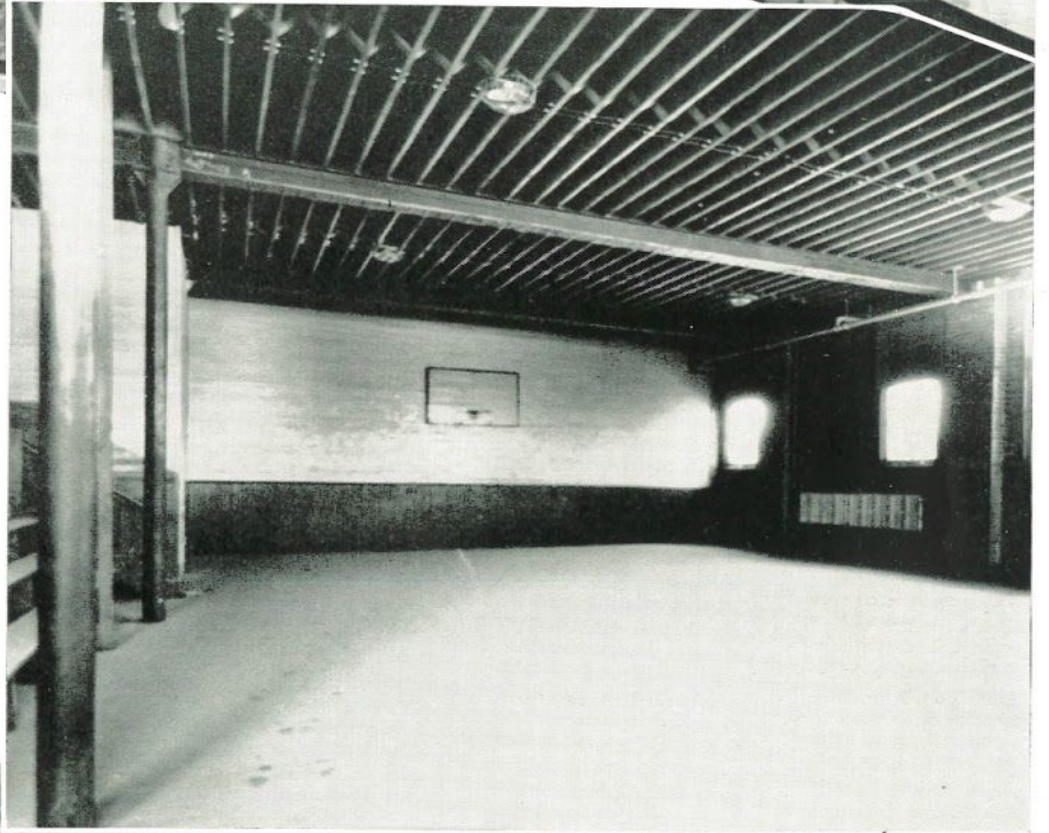
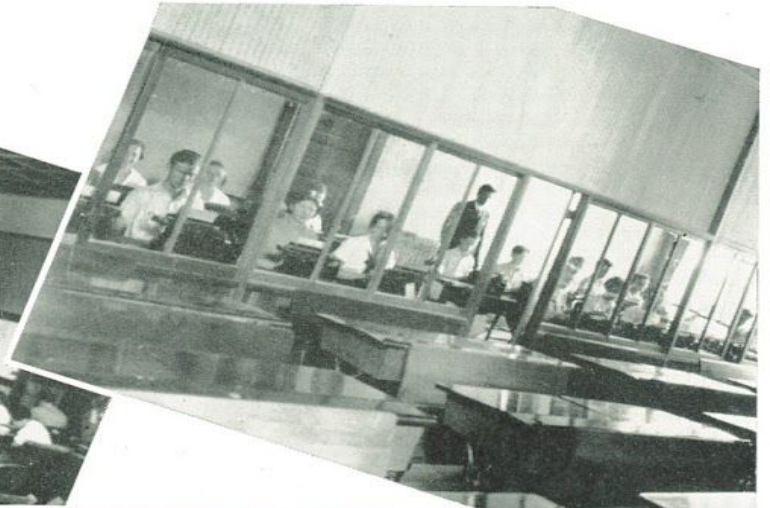
Lower Left—Classroom

Lower Right—Physical Science



VIEWS IN NEW HIGH SCHOOL BUILDING

These pages present contrasting views of corresponding rooms in the new and the old high school buildings. The pictures speak for themselves of the advantages of the new building.



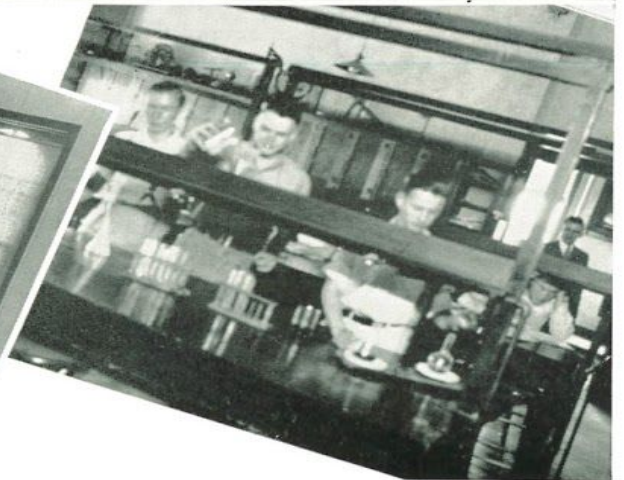
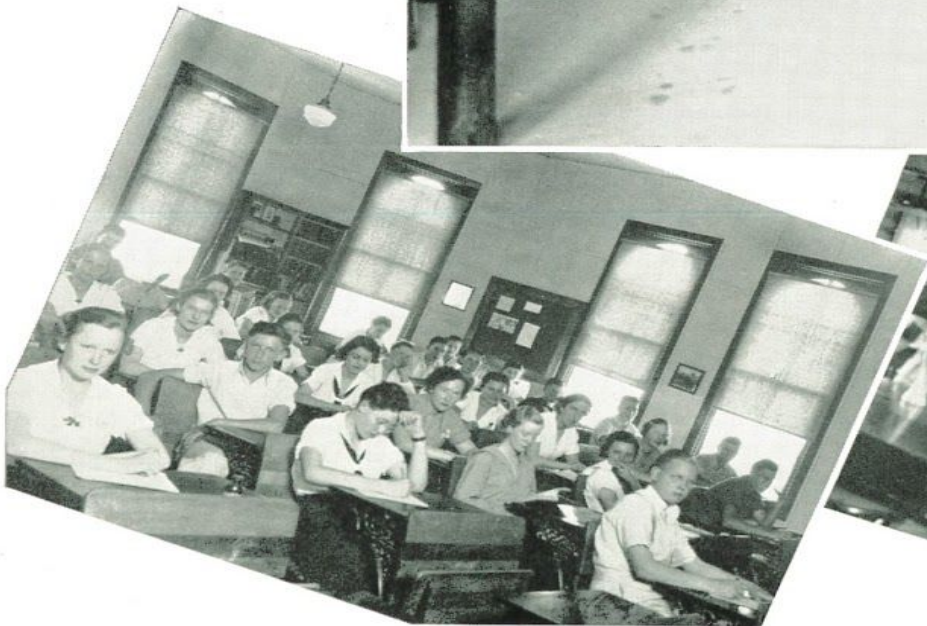
Upper Left—
Assembly

Upper Right—
Commercial

Center—
Gymnasium

Lower Left—
Classroom

Lower Right—
Physical Science



VIEWS IN RECENTLY ABANDONED HIGH SCHOOL BUILDING

Although these pictures speak of disadvantages, these rooms too, were at one time considered modern and well-equipped. The student body of Minden High School grew until more space was needed and the new building was constructed.

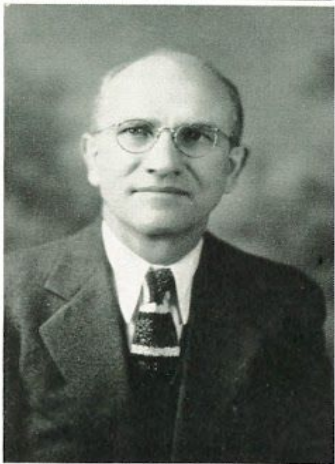
Board of Education



MR. C. H. HULTQUIST
PRESIDENT



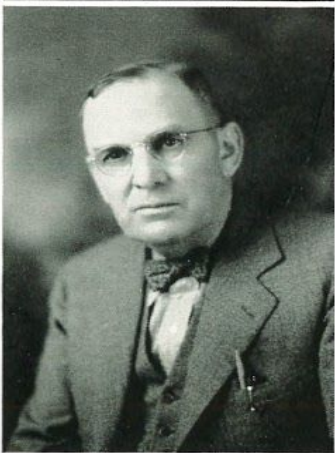
DR. W. E. CHAPPELL
VICE-PRESIDENT



MR. AUGUST BERNDT



MR. VERN PARTRIDGE



MR. C. S. ROGERS



MR. OSCAR WARP

TO BOARD OF EDUCATION

In a school district, the members of the Board of Education are the representatives and leaders of the school community. We wish to express to the members of this Board of Education, our sincere thanks for the many hours of planning and supervising of the construction and furnishing of this splendid new high school building. We know that they have spent many hours working for us without any payment for their services and we desire that they should know that we are truly grateful for this fine building in which to work.

"Zeal for the public good is the characteristic of a man of honor and a gentleman, and must take the place of pleasures, profits, and all other private gratifications."—Steele

M. H. S. Faculty

MR. C. L. JONES
SUPERINTENDENT



MR. STEVEN WATKINS
PRINCIPAL



MISS RUTH A. THOMPSON
MATHEMATICS



MISS GENEVIEVE KEENAN
COMMERCIAL



MISS MILDRED MCKEE
ENGLISH



MR. D. R. SANDY
VOCATIONAL AGRICULTURE



MR. JOHN B. RICHMAN
SOCIAL SC., ATHLETICS



MR. HOYLE FOSTER
PHYSICAL SCIENCE



MISS RUTH BRYAN
NORMAL TRAINING, LATIN



MISS VESTA M. PURSELL
COMMERCIAL AND ENGLISH



MISS DORIS B. ERICSON
HOME ECONOMICS



MR. EUGENE ELLSWORTH
MUSIC



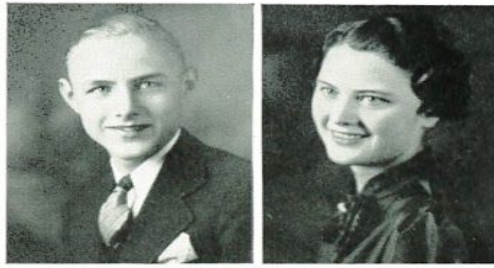
TO OUR FACULTY

Just as a sculptor is necessary to bring beauty to a block of marble, so is a faculty necessary to bring education to the youth of our high school. Their task is not easy, there are rough exteriors to uncover and that requires patience and great understanding. We often chafe at the insistence of correct behavior and the continual lessons to be well learned but how we appreciate, in later years, that we have been taught to remain with a task until it is completed. For the thoughtful and patient guidance, we wish to thank this group of loyal friends.

"The aim of education should be to teach us rather how to think, than what to think—rather to improve our minds, so as to enable us to think for ourselves, than to load the memory with the thoughts of other men."

—Beattie

Whippet Staff



DONALD KARGO
EDITOR-IN-CHIEF

BETTY JUNE HOLMES
ASSISTANT EDITOR



WAYNE THOMSEN
BUSINESS MANAGER

WINNONA GARRETT
ASSISTANT BUSINESS MANAGER



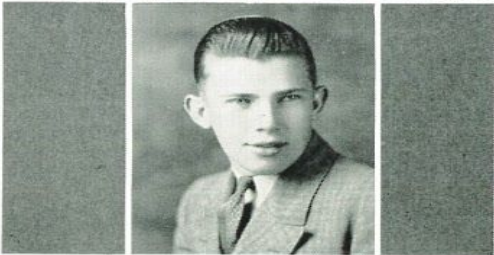
GERALDINE CHRISTENSEN
CLASS EDITOR

HELEN JOHNSON
ORGANIZATIONS EDITOR



ELAINE BANG
SNAPSHOTS AND FEATURE EDITOR

KENNETH TARKINGTON
ART EDITOR



DONALD FLEMING
ATHLETICS EDITOR

PRESENTATION OF WHIPPET

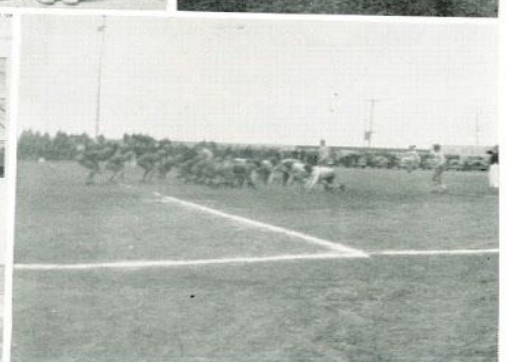
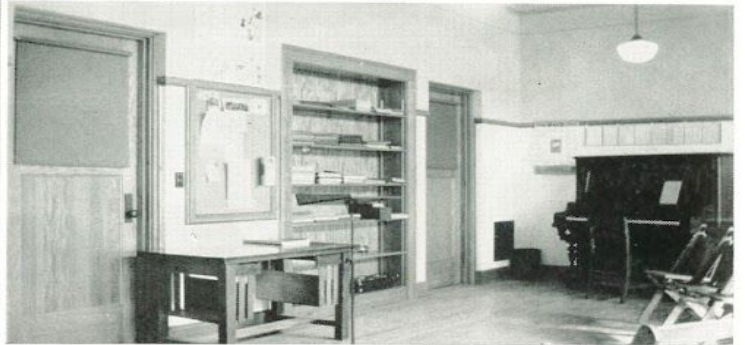
In producing this, the 1937 "Whippet," we have tried to convey to you by word and by picture a permanent record of the school year. We hope that this will meet with your approval.

To commemorate another step in the progress of the Minden schools, we have made a collection of the pictures of the various school buildings which have served the boys and girls of former years.

Also to keep alive the building from which we have recently moved and to show the difference between the "new" and the "old," we have given you comparative views of the various departments and rooms of the two buildings.

"As dew to the blossom, and bud to the bee, as the scent to the rose, are those memories to me."
—Amelia B. Welby

Random Snapshots



Merle Weedlun,
Drum Major

Girls' Sextette

Miss Higgins

Interior of Music Room

Our Janitors

Clarinet Trio

Mr. and Mrs. Ellsworth

Miss Sheimo

First Down

Camera "Catches"



Noon

Solid Comfort

Waiting

"Heels Up"

"The Pyramid"

Caught!

Schoolday Sweethearts

Old M.H.S.

New M.H.S.

Parking Grounds

Unemployed

