

Board of Education Regular Meeting

Monday, January 11, 2016 5:00 PM

C.L. Jones Middle School, 520 West Third, Minden, NE 68959

Ken Carpenter: Present
Justin Glanzer: Present
Craig Grams: Present
Richard Jacobsen: Present
Kevin Raun: Present
Rusty Rhynalds: Present

1. Roll Call

2. Elect New Board Officers

2.a. Nominations for President

Action(s):

Motion to nominate Grams as President Passed with a motion by Ken Carpenter and a second by Justin Glanzer.

Voting Detail:

Ken Carpenter: Yea
Justin Glanzer: Yea
Craig Grams: Yea
Richard Jacobsen: Yea
Kevin Raun: Yea
Rusty Rhynalds: Yea

Voting Summary: Yea: 6, Nay: 0

2.b. Cease Nominations for President

Action(s):

Motion to cease nominations for President Passed with a motion by Kevin Raun and a second by Ken Carpenter.

Voting Detail:

Ken Carpenter: Yea
Justin Glanzer: Yea
Craig Grams: Yea
Richard Jacobsen: Yea
Kevin Raun: Yea
Rusty Rhynalds: Yea

Voting Summary: Yea: 6, Nay: 0

2.c. Nominations for Vice-President

Action(s):

Motion to nominate Jacobsen as Vice-President Passed with a motion by Craig Grams and a second by Rusty Rhynalds.

Voting Detail:

Ken Carpenter: Yea
Justin Glanzer: Yea

Craig Grams: Yea
Richard Jacobsen: Yea
Kevin Raun: Yea
Rusty Rhynalds: Yea

Voting Summary: Yea: 6, Nay: 0

2.d. Cease Nominations for Vice-President

Action(s):

Motion to cease nominations for Vice-President
Passed with a motion by Justin Glanzer and a
second by Ken Carpenter.

Voting Detail:

Ken Carpenter: Yea
Justin Glanzer: Yea
Craig Grams: Yea
Richard Jacobsen: Yea
Kevin Raun: Yea
Rusty Rhynalds: Yea

Voting Summary: Yea: 6, Nay: 0

2.e. Nominations for Secretary

Action(s):

Motion to nominate Carpenter as Secretary Passed
with a motion by Justin Glanzer and a second by
Kevin Raun.

Voting Detail:

Ken Carpenter: Yea
Justin Glanzer: Yea
Craig Grams: Yea
Richard Jacobsen: Yea
Kevin Raun: Yea
Rusty Rhynalds: Yea

Voting Summary: Yea: 6, Nay: 0

2.f. Cease Nominations for Secretary

Action(s):

Motion to cease nominations for Secretary Passed
with a motion by Craig Grams and a second by Ken
Carpenter.

Voting Detail:

Ken Carpenter: Yea
Justin Glanzer: Yea
Craig Grams: Yea
Richard Jacobsen: Yea
Kevin Raun: Yea
Rusty Rhynalds: Yea

Voting Summary: Yea: 6, Nay: 0

2.g. Elect Board Officers

Action(s):

Motion to elect the following officers: Grams -
President; Jacobsen - Vice-President; Carpenter -
Secretary Passed with a motion by Ken Carpenter
and a second by Justin Glanzer.

Voting Detail:

Ken Carpenter: Yea
Justin Glanzer: Yea
Craig Grams: Yea
Richard Jacobsen: Yea
Kevin Raun: Yea
Rusty Rhynalds: Yea

Voting Summary: Yea: 6, Nay: 0

3. Approval of Committees, Positions, and Designations

3.a. Approval of Committees

Action(s):

Motion to table the formation of committees Passed with a motion by Craig Grams and a second by Justin Glanzer.

Voting Detail:

Ken Carpenter: Yea
Justin Glanzer: Yea
Craig Grams: Yea
Richard Jacobsen: Yea
Kevin Raun: Yea
Rusty Rhynalds: Yea

Voting Summary: Yea: 6, Nay: 0

3.b. Approval of Current Legal Counsel, Depository Banks, Treasurer, and District Newspaper of Record

Action(s):

Motion to approve the Perry Law Firm as district legal counsel, MInden Exchange Bank and First Bank and Trust Company as the official depositories of school funds, Bill Johnson as Treasurer, and the Minden Courier as district newspaper of record. Passed with a motion by Rusty Rhynalds and a second by Justin Glanzer.

Voting Detail:

Ken Carpenter: Yea
Justin Glanzer: Yea
Craig Grams: Abstain (With Conflict)
Richard Jacobsen: Yea
Kevin Raun: Yea
Rusty Rhynalds: Yea

Voting Summary: Yea: 5, Nay: 0, Abstain (With Conflict): 1

3.c. Approval of Current Board Policies and Regulations

Action(s):

Motion to approve current board policies and regulations Passed with a motion by Craig Grams and a second by Richard Jacobsen.

Voting Detail:

Ken Carpenter: Yea

Justin Glanzer: Yea

Craig Grams: Yea

Richard Jacobsen: Yea

Kevin Raun: Yea

Rusty Rhynalds: Yea

Voting Summary: Yea: 6, Nay: 0

4. Minutes

Action(s):

Motion to approve the minutes from the December 14 meeting Passed with a motion by Ken Carpenter and a second by Justin Glanzer.

Voting Detail:

Ken Carpenter: Yea

Justin Glanzer: Yea

Craig Grams: Yea

Richard Jacobsen: Yea

Kevin Raun: Yea

Rusty Rhynalds: Yea

Voting Summary: Yea: 6, Nay: 0

5. Public Comment

6. Financial Reports - Action Items

6.a. Consider Financial Reports

Action(s):

Motion to approve the Financial Reports as presented Passed with a motion by Justin Glanzer and a second by Rusty Rhynalds.

Voting Detail:

Ken Carpenter: Yea

Justin Glanzer: Yea

Craig Grams: Yea

Richard Jacobsen: Yea

Kevin Raun: Yea

Rusty Rhynalds: Yea

Voting Summary: Yea: 6, Nay: 0

7. Old Business - Action Items

7.a. Consider Bills - General Fund

Action(s):

Motion to approve the consideration of bills from the General Fund Passed with a motion by Rusty Rhynalds and a second by Craig Grams.

Voting Detail:

Ken Carpenter: Yea

Justin Glanzer: Yea

Craig Grams: Yea

Richard Jacobsen: Yea

Kevin Raun: Yea

Rusty Rhynalds: Yea

Voting Summary: Yea: 6, Nay: 0

8. Discussion Only

8.a. Report from Superintendent

8.b. Reports from Administrators

8.c. Facilities Update

9. New Business

9.a. Consider, Discuss, and Take Action on Approval of Construction Change Order of Alternate #1B to provide LVT Flooring in lieu of Standard VCT Flooring -- added 1/7/16

Action(s):

Motion to approve Construction Change Order of Alternate #1B to provide LVT flooring in lieu of standard VCT flooring Passed with a motion by Craig Grams and a second by Ken Carpenter.

Voting Detail:

Ken Carpenter:	Yea
Justin Glanzer:	Yea
Craig Grams:	Yea
Richard Jacobsen:	Yea
Kevin Raun:	Yea
Rusty Rhynalds:	Yea

Voting Summary: Yea: 6, Nay: 0

10. Additional Information

11. Adjournment

Action(s):

At 5:22 pm, motion to adjourn the meeting Passed with a motion by Ken Carpenter and a second by Justin Glanzer.

Voting Detail:

Ken Carpenter:	Yea
Justin Glanzer:	Yea
Craig Grams:	Yea
Richard Jacobsen:	Yea
Kevin Raun:	Yea
Rusty Rhynalds:	Yea

Voting Summary: Yea: 6, Nay: 0

Board Secretary

**MINDEN PUBLIC SCHOOLS
BOARD OF EDUCATION
December 14, 2015**

The agenda for the December 14, 2015 meeting was posted at the United States Post Office in Minden, Minden Exchange Bank, First Bank and Trust Company, Kearney County Courthouse, and the Minden city office. Agendas were mailed to the United States Post Office in Upland and Heartwell. The agenda was posted in the superintendent's office and published in the local paper.

The board meeting began at 5:00 pm with all board members present.

Motion by Raun and second by Glanzer to approve the minutes from the meeting held November 9. Roll call: Carpenter, aye; Glanzer, aye; Grams, aye; Jacobsen, aye; Raun, aye; Rhynalds, aye. Motion carried.

Motion by Rhynalds and second by Carpenter to approve the financial reports. Roll call: Carpenter, aye; Glanzer, aye; Grams, aye; Jacobsen, aye; Raun, aye; Rhynalds, aye. Motion carried.

Motion by Grams and second by Glanzer to approve the claims against the General Fund. Roll call: Carpenter, aye; Glanzer, aye; Grams, aye; Jacobsen, aye; Raun, aye; Rhynalds, aye. Motion carried.

Motion by Grams and second by Jacobsen to approve the food service equipment purchase and bleacher purchase, both for the new high school. Roll call: Carpenter, aye; Glanzer, aye; Grams, aye; Jacobsen, aye; Raun, aye; Rhynalds, aye. Motion carried.

Motion by Glanzer and second by Rhynalds to approve entering into Interlocal and Supplemental Educational Services (SES) Agreement with ESU 11 to procure Services for SES program from ESU 11 in the event parents from SES eligible students select ESU 11's SES program. Roll call: Carpenter, aye; Glanzer, aye; Grams, aye; Jacobsen, aye; Raun, aye; Rhynalds, aye. Motion carried.

Motion by Raun and second by Carpenter to approve the following staff to receive remuneration to serve SES students that might be assigned to his or her class during the normal school day during hours outside of the normal student school day: Jane Pierce, Katie Schmidt, Lisa Maulsby, Allyson Jameson, Kerri Harsin, Jennifer Muller, Lori Norgaard, Deb Schwenka, and Hailey Rhynalds. Roll call: Carpenter, aye; Glanzer, aye; Grams, aye; Jacobsen, aye; Raun, aye; Rhynalds, abstain. Motion failed.

Motion by Carpenter and second by Glanzer to approve the proposed 2016-2017 agreement with the Minden Education Association for a 3.84% total package increase and a base salary of \$35,150. Roll call: Carpenter, aye; Glanzer, aye; Grams, aye; Jacobsen, abstain; Raun, aye; Rhynalds, abstain. Motion carried.

At 5:21 pm, a motion was made by Grams and second by Raun to adjourn the meeting. Roll call: Carpenter, aye; Glanzer, aye; Grams, aye; Jacobsen, aye; Raun, aye; Rhynalds, aye. Motion carried.

Secretary, Board of Education

MINDEN PUBLIC SCHOOLS
TREASURER'S REPORT
December 31, 2015

SCHOOL BALANCE - November 30, 2015		\$35,517.77
Current Months Receipts		\$140,395.32
Transfers from Investments		\$600,000.00
Total Beginning Balance and Receipts		\$775,913.09
Less: Disbursements		\$746,570.66
Transfer to Investments		\$0.00
Total Disbursements		\$746,570.66
SCHOOL BALANCE - December 31, 2015		\$29,342.43
BALANCE PER BANK STATEMENT - December 31, 2015		\$37,479.04
Deposits In Transit		\$0.00
LESS : Outstanding Checks		\$8,136.61
RECONCILED BANK BALANCE - December 31, 2015		\$29,342.43
(Balance - December 31, 2014 = \$81,110.63)		
GENERAL FUND INVESTMENTS		\$2,157,849.72
Money Market Minden Exchange	\$935,158.34	0.15% demand
Money Market First Bank	\$1,222,691.38	0.25% demand
(Balance December 31, 2014 = \$2,341,550.35)		
DEPRECIATION FUND INVESTED		\$1,323,079.72
Money Market Minden Exchange Bank	\$56,118.97	0.15% demand
Money Market First Bank	\$525,960.25	0.25% demand
NE Liquid Asset Fund - Depreciation Fund	\$741,000.00	
Checking Minden Exchange Bank	\$0.50	
(Balance December 31, 2014 = \$622,369.38)		
EMPLOYEE BENEFITS FUND		\$35,189.52
Money Market First Bank	\$35,189.52	0.25% demand
(Balance December 31, 2014 = \$35,101.67)		
BUILDING FUND		\$12,462,802.07
Money Market Minden Exchange Bank	\$1,229,910.07	0.15% demand
Money Market First Bank	\$57,423.63	0.25% demand
NE Liquid Asset Fund - Building Fund	\$741,000.00	
Money Market First Bank - HS Constr. Acct.	\$5,325,496.32	0.25% demand
NE Liquid Asset Fund - HS Constr. Acct.	\$5,108,970.52	
Checking Minden Exchange Bank	\$1.53	
(Balance December 31, 2014 = \$14,920,149.96)		
LUNCH FUND		\$101,409.27
Money Market First Bank	\$7,926.12	0.05% demand
Checking First Bank	\$93,483.15	
(Balance December 31, 2014 = \$86,511.13)		
FUNDS PLEDGED FOR DEPOSITS		
Minden Exchange Bank	\$4,874,930.35	Plus 250M FDIC
First Bank	\$7,960,000.00	Plus 250M FDIC

William Johnson, Treasurer

Monthly Board Report All Expenses

Account	Description	Proposed Budgeted	Disbursed	Balance Remaining	Percentage Spent
1-1100	Instructional Supplies & Services	\$395,952.48	\$114,678.58	\$281,273.90	28.96%
1-1100-110	Instructional Salaries & Benefits	\$4,342,259.91	\$1,768,898.01	\$2,573,361.90	40.74%
1-1125	Academic Intervention Supplies & Service	\$3,850.00	\$5,000.00	-\$1,150.00	129.87%
1-1125-110	Academic Intervention Salaries & Benefits	\$112,664.40	\$46,249.38	\$66,415.02	41.05%
1-1200	SPED Supplies & Services	\$126,343.50	\$16,231.49	\$110,112.01	12.85%
1-1200-110	SPED Salaries & Benefits	\$1,083,947.91	\$400,842.55	\$683,105.36	36.98%
1-1290	Preschool Supplies & Services	\$29,820.75	\$2,431.48	\$27,389.27	8.15%
1-1290-110	Preschool Salaries & Benefits	\$47,748.97	\$17,745.73	\$30,003.24	37.16%
1-1310	Gifted Supplies & Services	\$2,100.00	\$135.00	\$1,965.00	6.43%
1-1310-110	Gifted Salaries & Benefits	\$46,831.18	\$18,829.00	\$28,002.18	40.21%
1-2120	Guidance Supplies & Services	\$3,425.00	\$1,049.11	\$2,375.89	30.63%
1-2120-110	Guidance Salaries & Benefits	\$261,430.24	\$108,884.24	\$152,546.00	41.65%
1-2130	Health Services	\$39,768.37	\$17,939.28	\$21,829.09	45.11%
1-2150	Safety & Security	\$20,000.00	\$613.50	\$19,386.50	3.07%
1-2190	Activities Supplies & Services	\$30,000.00	\$21,325.84	\$8,674.16	71.09%
1-2190-110	Activities Salaries & Benefits	\$221,305.00	\$60,996.13	\$160,308.87	27.56%
1-2210	ESU Grant	\$587.64	\$0.00	\$587.64	0.00%
1-2212	Staff Training and Curriculum Development	\$10,000.00	\$1,483.53	\$8,516.47	14.84%
1-2215	Assessment Coordinator Supplies & Service	\$850.00	\$42.00	\$808.00	4.94%
1-2215-110	Assessment Coordinator Salary & Benefits	\$38,192.00	\$15,886.61	\$22,305.39	41.60%
1-2222	Media Center Supplies & Services	\$26,242.25	\$8,013.76	\$18,228.49	30.54%
1-2222-110	Media Center Salaries & Benefits	\$226,710.63	\$94,267.91	\$132,442.72	41.58%
1-2310	Board of Education	\$44,870.63	\$17,753.33	\$27,117.30	39.57%
1-2320	Executive Administration Supplies & Services	\$10,950.00	\$2,226.03	\$8,723.97	20.33%
1-2320-110	Executive Administration Salaries & Benefits	\$234,031.13	\$95,855.46	\$138,175.67	40.96%
1-2330	District Legal Services	\$30,000.00	\$4,240.19	\$25,759.81	14.13%
1-2410	Principals Supplies & Services	\$11,895.00	\$1,035.45	\$10,859.55	8.70%
1-2410-110	Principals Salary & Benefits	\$511,233.95	\$216,116.98	\$295,116.97	42.27%
1-2500	Postage & Telephone	\$18,500.00	\$3,938.18	\$14,561.82	21.29%
1-2510	Business Administration	\$112,647.62	\$39,280.32	\$73,367.30	34.87%
1-2520	Non-Pupil Vehicle Fuel & Maintenance	\$20,000.00	\$477.46	\$19,522.54	2.39%
1-2610	Custodial Supplies & Services	\$30,000.00	\$11,904.21	\$18,095.79	39.68%
1-2610-110	Custodial Salaries & Benefits	\$269,877.44	\$91,742.75	\$178,134.69	33.99%
1-2615	Utilities	\$291,550.00	\$104,265.82	\$187,284.18	35.76%
1-2620	Maintenance Supplies & Services	\$280,000.00	\$57,226.76	\$222,773.24	20.44%
1-2620-110	Maintenance Salaries & Benefits	\$147,410.83	\$48,025.61	\$99,385.22	32.58%
1-2620-300	Insurance	\$142,681.00	\$142,681.00	\$0.00	100.00%
1-2750	Pupil Transportation Supplies & Services	\$131,500.00	\$46,111.96	\$85,388.04	35.07%
1-2750-110	Pupil Transportation Salaries & Benefits	\$149,534.96	\$56,315.55	\$93,219.41	37.66%
1-3135	High Ability Learners	\$7,358.00	\$3,771.00	\$3,587.00	51.25%
1-3501	SCIP Grant	\$500.00	\$0.00	\$500.00	0.00%
1-4200	Title I Part A	\$102,373.00	\$39,427.70	\$62,945.30	38.51%
1-4210	Title I Part A - Accountability	\$6,295.61	\$0.00	\$6,295.61	0.00%
1-4310	Title II Part A	\$23,611.00	\$23,657.00	-\$46.00	100.19%
1-4400	Federal Funds	\$163,425.00	\$91,211.95	\$72,213.05	55.81%
1-5000	Repayment of Taxes	\$0.00	\$3,560.46	-\$3,560.46	
1-6000	Summer School	\$9,026.14	\$0.00	\$9,026.14	0.00%
1-9000	Payroll Reimbursed by Other Funds/Agencies	\$0.00	\$3,095.03	-\$3,095.03	
Totals		\$9,819,301.54	\$3,825,463.33	\$5,993,838.21	38.96%

2015/16 Projections vs. Actuals for General Fund As of December 31, 2015

Income

2015/16 Budgeted Income =		\$9,669,301.54		Running Balance
Month	Projected Income	Actual Income	Over/(Under) Projection	Over/(Under) Projection
September	\$1,921,290.22	\$1,907,051.53	(\$14,238.69)	(\$14,238.69)
October	\$546,315.54	\$378,593.81	(\$167,721.73)	(\$181,960.42)
November	\$214,658.49	\$179,958.95	(\$34,699.54)	(\$216,659.96)
December	\$168,245.85	\$140,764.70	(\$27,481.15)	(\$244,141.11)
January	\$1,505,510.25			
February	\$804,485.89			
March	\$493,134.38			
April	\$371,301.18			
May	\$2,494,679.80			
June	\$830,593.00			
July	\$136,337.15			
August	\$182,749.79			

Cash Flow

Month	Projected Cash Flow	Actual Cash Flow	Over/(Under) Projection	Running Balance Over/(Under) Projection
September	\$1,067,992.92	\$1,003,785.00	(\$64,207.92)	(\$64,207.92)
October	(\$222,535.77)	(\$360,633.85)	(\$138,098.08)	(\$202,306.00)
November	(\$598,379.68)	(\$557,002.48)	\$41,377.20	(\$160,928.80)
December	(\$594,713.88)	(\$605,764.61)	(\$11,050.73)	(\$171,979.53)
January	\$734,695.08	\$0.00		
February	\$30,724.93	\$0.00		
March	(\$281,608.51)	\$0.00		
April	(\$399,513.99)	\$0.00		
May	\$1,695,388.65	\$0.00		
June	(\$103,222.58)	\$0.00		
July	(\$689,466.11)	\$0.00		
August	(\$789,361.06)	\$0.00		

Expenses

2015/16 Budgeted Expenses =		\$9,819,301.54		Running Balance
Month	Projected Expenses	Actual Expenses	Over/(Under) Projection	Over/(Under) Projection
September	\$853,297.30	\$903,266.53	\$49,969.23	\$49,969.23
October	\$768,851.31	\$739,227.66	(\$29,623.65)	\$20,345.58
November	\$813,038.17	\$736,961.43	(\$76,076.74)	(\$55,731.16)
December	\$762,959.73	\$746,529.31	(\$16,430.42)	(\$72,161.58)
January	\$770,815.17			
February	\$773,760.96			
March	\$774,742.89			
April	\$770,815.17			
May	\$799,291.15			
June	\$933,815.58			
July	\$825,803.26			
August	\$972,110.85			

General Fund Balance

Beginning Reconciled GF Balance =		\$2,706,808.09	
Month	Projected GF Balance	Actual Reconciled GF Balance	Over/(Under) Projection
September	\$3,774,801.01	\$3,710,593.09	(\$64,207.92)
October	\$3,552,265.24	\$3,349,959.24	(\$202,306.00)
November	\$2,953,885.56	\$2,792,956.76	(\$160,928.80)
December	\$2,359,171.68	\$2,187,192.15	(\$171,979.53)
January	\$3,093,866.76		
February	\$3,124,591.69		
March	\$2,842,983.18		
April	\$2,443,469.19		
May	\$4,138,857.84		
June	\$4,035,635.26		
July	\$3,346,169.15		
August	\$2,556,808.09		

Lunch Fund Checks and Liabilities

Check Number	Date	Payee	Reason	Amount
EFT	12/9/2015	Sysco - EFT	Commodities	\$ 6,896.35
5007	12/9/2015	Roberts Dairy	Milk Products	\$ 3,774.95
5008	12/9/2015	Mason's Market	Commodities	\$ 26.38
5009	12/9/2015	Cash-wa Distributing Co.	Commodities	\$ 3,677.92
5009	12/9/2015	Cash-wa Distributing Co.	CLJ Cafeteria Milk Cooler	\$ 2,279.32
5010	12/9/2015	Nebraska Food Distribution	Commodities	\$ 1,584.05
5011	12/9/2015	Dollar General	Lunch Room Supplies	\$ 23.25
5012	12/9/2015	Pepsi-cola Bottling	Beverages	\$ 655.30
5013	12/9/2015	Chesterman Company	Beverages	\$ 132.50
5014	12/9/2015	School Nutrition Association	School Nutrition Association Membership	\$ 45.50
5015	12/9/2015	Hobart Sales & Service	East Dishwasher Repair	\$ 451.26
5016	12/9/2015	Pizza Hut	Thanksgiving Meal Pizza	\$ 605.00
5017	12/9/2015	Minden Office Supply	Lunch Room Printer Ink	\$ 35.10
5018	12/9/2015	Minden Middle School	Water	\$ 108.00
2881	1/12/2016	Blue Cross Blue Shield	Health & Dental Insurance Premiums	\$ 1,462.89
2882	1/12/2016	Minden Public Schools	EE & ER Retirement Contributions	\$ 1,621.51
2882	1/12/2016	Minden Public Schools	Employee FEBA - Medical/Dental	\$ 83.34
2883	1/12/2016	Mps Payroll	EE & ER FICA, Medicare, & Federal Income Tax	\$ 1,445.53
2884	1/12/2016	Mps Payroll NE Income Tax	EE Nebraska Income Tax Withholding	\$ 68.81
2885	1/12/2016	National Insurance Services of WI, Inc.	EE Life Insurance Premiums	\$ 56.15
2886	1/12/2016	Principal Life Insurance Company	ER Long-Term Disability Premiums	\$ 15.87
2888	1/12/2016	Mps Payroll	Liability Payment	\$ 8.26
Subtotal				\$ 25,057.24
Net Payroll - January				\$ 6,609.43
Total Lunch Fund Disbursements				\$ 31,666.67

Building Fund Liabilities - New High School Construction

Check Number	Date	Payee	Reason	Amount
EFT	1/12/2016	DLR Group, Inc.	Additional Site Work - 65% Complete	\$ 500.00
EFT	1/12/2016	DLR Group, Inc.	Construction Services - 8% Complete	\$ 15,889.10
EFT	1/12/2016	DLR Group, Inc.	Reimbursable Printing	\$ 10.30
EFT	1/12/2016	DLR Group, Inc.	Reimbursable Travel	\$ 51.86
Subtotal - Liabilities Paid From Bond Proceeds				\$ 16,451.26
462	1/12/2016	Olsson Associates, Inc.	Early Site Package - 82% Complete	\$ 2,386.40
462	1/12/2016	Olsson Associates, Inc.	Material Testing Package - 12% Complete	\$ 4,919.60
Subtotal - Liabilities Paid From Existing Building Fund Proceeds				\$ 7,306.00
Total Building Fund Liabilities - New High School Construction - January 2016				\$ 23,757.26

Bank Statement Reconciliation

Description

Adjustment Date

Adjustment Amount

Minden High School 12/01/2015 through 12/31/2015

Bank Statement Reconciliation Summary

Statement Balance	\$ 152,883.54
- Outstanding checks	\$ 7,059.78
+ Outstanding Deposits	\$ 0.00
+ Outstanding Adjustments	\$ 0.00
- Outstanding Investment Transfers	\$ 0.00
Total	\$ 145,823.76
+ Investments	\$ 37,000.00
Book Balance	\$ 182,823.76

Statement Adjustment

Statement Adjustment	-\$ 157.60
Description	Correction

Checks For Payment Listing

Date	Check Number	Payee	Reason	Amount
01/12/2016	32895	Ameritas Life Insurance Corp.	EE 403(b) Contribution Withholding	\$ 250.00
01/12/2016	32896	Annuities Service Center	EE 403(b) Contribution Withholding	\$ 250.00
01/12/2016	32897	Blue Cross Blue Shield	EE & ER Health & Dental Insurance Premiums	\$ 105,381.76
01/12/2016	32898	Horace Mann Life Insurance Company	EE 403(b) Contribution Withholding	\$ 4,675.00
01/12/2016	32899	Minden Public Schools	EE & ER Retirement Contributions	\$ 87,758.34
01/12/2016	32899	Minden Public Schools	EE Court Settlement	\$ 806.00
01/12/2016	32899	Minden Public Schools	Employee FEBA - Dependent Care	\$ 2,050.02
01/12/2016	32899	Minden Public Schools	Employee FEBA - Medical/Dental	\$ 4,941.79
01/12/2016	32900	Mps Payroll	EE & ER FICA, Medicare, & Federal Income Tax	\$ 110,712.19
01/12/2016	32901	Mps Payroll NE Income Tax	EE Nebraska Income Tax Withholding	\$ 14,788.08
01/12/2016	32902	National Insurance Services of WI, Inc.	EE Life Insurance Premiums	\$ 734.60
01/12/2016	32903	New York Life	EE 403(b) Contribution Withholding	\$ 200.00
01/12/2016	32904	Pacific Life	EE 403(b) Contribution Withholding	\$ 300.00
01/12/2016	32905	Principal Life Insurance Company	ER Long-Term Disability Premiums	\$ 1,786.49
01/12/2016	32906	Aurora Cooperative	Fuel Purchases	\$ 923.16
01/12/2016	32907	Bill's Plumbing	HS Plumbing Repairs	\$ 113.58
01/12/2016	32907	Bill's Plumbing	MS Plumbing Repairs	\$ 406.37
01/12/2016	32908	Boys Town Press	East Counseling Textbooks	\$ 210.25
01/12/2016	32909	Cardmember Service	Headsets	\$ 219.35
01/12/2016	32909	Cardmember Service	HS Principal Supplies	\$ 130.54
01/12/2016	32910	Carter Electric	HS Shop Saw Repair	\$ 110.00
01/12/2016	32911	Central Fire & Safety, Inc.	East Fire System Check & Service	\$ 168.50
01/12/2016	32911	Central Fire & Safety, Inc.	MS Fire system Check & Repair	\$ 218.00
01/12/2016	32912	CenturyLink - Regular Telephone	District Emergency Line	\$ 80.76
01/12/2016	32913	Charter Communications	Distance Learning Services	\$ 312.31
01/12/2016	32922	Children's Plus	MS Library Books	\$ 418.76
01/12/2016	32923	City Of Minden	Utilities	\$ 11,602.17
01/12/2016	32924	Coach Masters, Inc.	Coach Bus Repairs	\$ 460.21
01/12/2016	32924	Coach Masters, Inc.	Bus 97A Repairs	\$ 55.00
01/12/2016	32924	Coach Masters, Inc.	Coach Bus Repairs	\$ 412.80
01/12/2016	32925	Communications Engineering, Inc.	HS Video Display Repair	\$ 75.00
01/12/2016	32925	Communications Engineering, Inc.	MS Intercom Repair	\$ 6,068.69
01/12/2016	32926	Computer Hardware, Inc.	MS Computer Repair	\$ 40.00
01/12/2016	32927	Cooperative Producers, Inc.	Rock Salt	\$ 82.10
01/12/2016	32928	Cornhusker International Trucks, Inc.	Bus 14A Repair	\$ 265.59
01/12/2016	32929	Cornhusker Marriott Hotel (The)	State Principals Conference Lodging	\$ 95.00
01/12/2016	32930	D & M Security, Inc.	1st Quarter 2016 Alarm Monitoring	\$ 166.50
01/12/2016	32931	Diamond Vogel Paint Center	HS Wood Shop Finishing Supplies	\$ 168.06
01/12/2016	32931	Diamond Vogel Paint Center	HS Wood Shop Finishing Supplies	\$ 135.14
01/12/2016	32932	Dollar General	East Music Supplies	\$ 12.00
01/12/2016	32932	Dollar General	Supplies	\$ 28.50
01/12/2016	32932	Dollar General	Preschool Supplies	\$ 18.00
01/12/2016	32933	Echo Electric Supply Co.	East Light Bulbs	\$ 98.10
01/12/2016	32933	Echo Electric Supply Co.	East Light Bulbs	\$ 293.40
01/12/2016	32934	Educational Service Unit #10	Deaf Education Services	\$ 218.15
01/12/2016	32934	Educational Service Unit #10	MS Writing Training	\$ 75.00
01/12/2016	32935	Eletech, Inc.	HS Elevator Repair	\$ 2,875.15
01/12/2016	32935	Eletech, Inc.	HS Elevator Maintenance Agreement	\$ 189.57
01/12/2016	32936	First Advantage LNS Occ. Health Solutions, Inc.	Bus Driver Alcohol Testing	\$ 10.00
01/12/2016	32937	Gibbins Telecom	East Telephone Replacement	\$ 220.00
01/12/2016	32938	Harris School Solutions	Tax Forms	\$ 217.20
01/12/2016	32939	Hometown Leasing	Copier & Printer Lease	\$ 2,734.54
01/12/2016	32940	IXL Learning	HS Math Site License Upgrade	\$ 114.00
01/12/2016	32941	John Deere Financial	JD Tractor Repair	\$ 803.58
01/12/2016	32941	John Deere Financial	JD Tractor Repair	\$ 10.13
01/12/2016	32941	John Deere Financial	Gator Snow Blade	\$ 2,045.74
01/12/2016	32942	JW Pepper & Son, Inc.	MS Instrumental Sheet Music	\$ 120.00
01/12/2016	32942	JW Pepper & Son, Inc.	MS Instrumental Sheet Music	\$ 167.99
01/12/2016	32943	Kearney Centre Vacuum	Vacuum Cleaner Repair Parts	\$ 285.95
01/12/2016	32944	Kearney County Health Services	Bus Driver Physical	\$ 167.00
01/12/2016	32944	Kearney County Health Services	HS Cholesterol Testing	\$ 130.00
01/12/2016	32945	Kearney Hub	Employment Advertising	\$ 73.53
01/12/2016	32946	Kevin Raun	State School Board Conference Travel	\$ 235.75
01/12/2016	32947	Mason's Market	MS Science Supplies	\$ 30.56

Checks For Payment Listing

Date	Check Number	Payee	Reason	Amount
01/12/2016	32947	Mason's Market	HS FCS Supplies	\$ 111.40
01/12/2016	32947	Mason's Market	HS SPED Supplies	\$ 6.78
01/12/2016	32947	Mason's Market	Kindergarten Supplies	\$ 47.95
01/12/2016	32947	Mason's Market	MS Life Skills Supplies	\$ 13.33
01/12/2016	32947	Mason's Market	Preschool Supplies	\$ 12.59
01/12/2016	32947	Mason's Market	1st Grade Supplies	\$ 46.35
01/12/2016	32948	Matheson Tri-Gas, Inc.	HS Metals Shop Welder Repair	\$ 136.44
01/12/2016	32949	Mick O'Brien	Piano Tuning	\$ 156.00
01/12/2016	32950	Mid-Nebraska Garage Doors, Inc.	Bus Barn Garage Door Repair	\$ 365.00
01/12/2016	32951	Midwest Floor Specialists	Competition Gym Refinishing	\$ 1,690.60
01/12/2016	32952	Minden Courier	Board Postings & Advertising	\$ 243.60
01/12/2016		Minden Exchange Bank - EFT	Direct Deposit Fees	\$ 35.05
01/12/2016	32953	Minden Hardware	Repairs, Maintenance, Supplies, & UPS Shipping Charges	\$ 243.62
01/12/2016	32954	Minden Lumber & Concrete	East Elementary Gym Mats	\$ 82.98
01/12/2016	32954	Minden Lumber & Concrete	East Elementary Gym Mats	\$ 33.80
01/12/2016	32954	Minden Lumber & Concrete	East Elementary Gym Mats	\$ 4.00
01/12/2016	32954	Minden Lumber & Concrete	East Elementary Gym Mats	\$ 31.29
01/12/2016	32954	Minden Lumber & Concrete	East Elementary Gym Mats	\$ 46.08
01/12/2016	32954	Minden Lumber & Concrete	East Elementary Gym Mats	\$ 5.99
01/12/2016	32955	Minden Office Supply	Central Office Supplies	\$ 11.25
01/12/2016	32955	Minden Office Supply	Bus Barn Supplies	\$ 24.29
01/12/2016	32956	Mitinet, Inc.	HS Library Software Renewal	\$ 329.00
01/12/2016	32957	Movie Licensing USA	Public Performance Site Licenses	\$ 828.00
01/12/2016	32958	Mps Petty Cash	Postage	\$ 20.55
01/12/2016	32959	Napa Auto Parts	Coach Bus Antifreeze	\$ 32.38
01/12/2016	32959	Napa Auto Parts	Van 7V1 Wiper Blades	\$ 30.37
01/12/2016	32959	Napa Auto Parts	Bus 14B Batteries	\$ 211.42
01/12/2016	32959	Napa Auto Parts	Bus 98A Repairs	\$ 12.23
01/12/2016	32959	Napa Auto Parts	Bus 5A Oil Filter	\$ 5.99
01/12/2016	32959	Napa Auto Parts	Bus 97A Oil Filter	\$ 11.99
01/12/2016	32959	Napa Auto Parts	Bus 97A Rislone	\$ 13.26
01/12/2016	32959	Napa Auto Parts	Bus 97A Batteries	\$ 211.42
01/12/2016	32960	Nearpod, Inc.	HS Software Management Service	\$ 2,150.00
01/12/2016	32961	One Source	December Background Checks	\$ 31.00
01/12/2016	32962	Pearson Clinical Assessment	WIAT-III Scoring Subscription	\$ 149.00
01/12/2016	32963	Perry, Guthery, Haase & Gessford, P.C., L.L.O	General Legal Fees	\$ 590.00
01/12/2016	32963	Perry, Guthery, Haase & Gessford, P.C., L.L.O	HS Construction Project Legal Fees	\$ 1,281.00
01/12/2016	32964	Presto-X Company	Pest Control Services	\$ 119.48
01/12/2016	32965	Rusty Rhynalds	State School Board Conference Travel Expenses	\$ 203.55
01/12/2016	32966	Sapp Bros. Petroleum, Inc	Bus Motor Oil	\$ 154.80
01/12/2016	32967	Source Gas, LLC	East Natural Gas	\$ 1,651.14
01/12/2016	32967	Source Gas, LLC	Bus Barn Natural Gas	\$ 326.56
01/12/2016	32967	Source Gas, LLC	Activity Building Natural Gas	\$ 1,276.79
01/12/2016	32967	Source Gas, LLC	HS Natural Gas	\$ 2,364.55
01/12/2016	32967	Source Gas, LLC	MS Natural Gas	\$ 2,179.33
01/12/2016	32968	Supplyworks	Custodial Supplies	\$ 316.11
01/12/2016	32969	U.S. Post Office	Postage & Envelopes	\$ 1,277.90
01/12/2016	32970	Village Uniform	Custodial Supplies	\$ 1,378.56
01/12/2016	32971	Welton Diesel	Bus 14A Repair	\$ 65.00
01/12/2016	32971	Welton Diesel	Coach Bus Maintenance	\$ 693.61
01/12/2016	32971	Welton Diesel	Coach Bus Repairs	\$ 256.34
01/12/2016	32971	Welton Diesel	Transit Bus Maintenance	\$ 556.33
01/12/2016	32971	Welton Diesel	Bus 14A Maintenance	\$ 383.93
01/12/2016	32971	Welton Diesel	Bus 14B Transmission Fluid Change	\$ 408.44
01/12/2016	32971	Welton Diesel	Bus 14B Maintenance	\$ 383.93
01/12/2016	32971	Welton Diesel	Bus 14A Transmission Fluid Change	\$ 408.44
01/12/2016	32971	Welton Diesel	Bus 13A Maintenance	\$ 383.93
01/12/2016	32971	Welton Diesel	Bus 13A Transmission Fluid Change	\$ 408.44
01/12/2016	32971	Welton Diesel	Bus 13B Maintenance	\$ 383.93
01/12/2016	32971	Welton Diesel	Bus 13B Transmission Fluid Change	\$ 408.44
01/12/2016	32971	Welton Diesel	Bus 5A Maintenance	\$ 88.21
01/12/2016	32971	Welton Diesel	Transit Bus Repair	\$ 64.25
01/12/2016	32971	Welton Diesel	Bus 93A Maintenance	\$ 164.13
01/12/2016	32971	Welton Diesel	Bus 97A Maintenance	\$ 154.50

Checks For Payment Listing

Date	Check Number	Payee	Reason	Amount
01/12/2016	32971	Welton Diesel	Bus 98A Maintenance	\$ 154.50
01/12/2016	32972	Woodward's Disposal Service, Inc.	Shredding Service	\$ 52.00
01/12/2016	32973	Wright Express Fleet Services	Transportation Fuel & Supplies	\$ 445.19
01/12/2016	32974	Zeliff, Steven R	HS Computer Repair Parts	\$ 32.59
Subtotal				\$ 395,146.85
Net Payroll - January 2016				\$ 305,007.83
Total General Fund Disbursements - January 2016				<u>\$ 700,154.68</u>

Secretary _____

Superintendent's Report

January 2016

Election of Officers

The first order of business will be to elect officers of the board for the 2016 year.

Committees

We will need to discuss our committee assignments. The committees are: personnel, policies, buildings/grounds, finance, curriculum, and legislation.

Current committee assignments were:

Personnel: Craig, Kevin

Policies: Justin, Ken

Blds./Grs: Craig, Richard, Ken

Finance: Richard, Craig, Kevin

Curriculum: Rusty, Kevin

Legislation: Rusty, Justin

Americanism: Justin, Craig, Kevin

Community Flyer

The administrative team has completed their articles for the annual report to patrons, and the Minden Courier will be compiling it for the flyer.

Legislative Conference

The deadline for registering for the Legislative conference in Lincoln is January 22nd. These are the board members that have been registered: Craig, Ken, Rusty, and Kevin.

Title I and Title II Review

I have included the Nebraska Department of Education official review letter. Our district was found to be in compliance. Tammie Petersen and Sandy Pohl are to be commended for their efforts and organization of a well-run program.

February Board Meeting

Monday, February 8th at 5:00 pm



NEBRASKA

DEPARTMENT OF EDUCATION

www.education.ne.gov
301 Centennial Mall South
P.O. Box 94987
Lincoln, NE 68509-4987
TEL 402.471.2295
FAX 402.471.0117

December 29, 2015

Melissa Wheelock
Minden Public Schools (County District #50-0503)
520 West 3rd, Box 301
Minden, NE 68959-0301

Dear Dr. Wheelock:

A monitoring review of the No Child Left Behind (NCLB) grant programs administered by Minden Public Schools was conducted on December 2, 2015. The programs reviewed were Title I, Part A and Title II, Part A. Taking part in the review were the following:

Melissa WheelockSuperintendent
Sandy Pohl Elementary School Principal
Tamara Petersen Title I Teacher
Jan Handa NDE, NCLB Programs

The school improvement team at Minden Public Schools meets regularly to review data to determine the goals and objectives of the school improvement plan, which currently has a focus on improving writing skills.

The program requirements of both federal programs were reviewed per the NCLB Monitoring Guide Checklist and all were found to be in compliance. The district has in place established policies for procurement (including contracts and purchase/service agreements).

The district has targeted the Title I dollars to early intervention in reading and math in grades 1–3 at East Elementary. Tammie Petersen, Title I teacher, is to be commended for the detailed documentation of all Title I procedures and policies. She provided many samples of requested information and all required documentation was presented in a very orderly fashion.

Title II-A funds are used for class-size reduction to pay a portion of a highly qualified teacher salary in third grade.

Melissa Wheelock
December 29, 2015
Page Two

The NCLB monitoring process was designed to insure that school districts and educational service unit multi-district projects are complying with NCLB guidance. This was evident throughout the visit. There are no corrective actions required as a result of the NCLB monitoring review. If you have questions/concerns regarding the NCLB monitoring visit, please contact me by email at jan.handa@nebraska.gov or by phone at 402-471-0876.

Sincerely,



Jan Handa
Nebraska Department of Education

MINDEN PUBLIC SCHOOLS
ACTIVITIES/ATHLETIC DEPARTMENT

*Phillip Hoyt, Assistant Principal
Activities Director*

*325 North Yates Avenue
Minden, NE 68959-1598
308-832-2254 School
308-832-1892 Fax*

**JANUARY 2016 BOARD MEETING
ACTIVITIES DIRECTOR REPORT**

The girls and boys basketball teams have competed through December and have continued playing in January. The girls are 5-5 right now and trying to get healthy from many injuries this winter. Both the boys and girls teams played well finishing 2nd behind Seward at the Seward Holiday Tournament over the break. The boys are 2-7 right now. Both teams competed against Ainsworth and Valentine Jan 8-9. The teams play at Ravenna and Hastings St. Cecilia on Jan 12 and 14.

The high school wrestling team finished 3rd at the Axtell Invite on Dec 15 and finished 7th in the 20 team Cambridge Invite on Dec 19. The team lost a close dual to St Paul on Jan 7 by a score of 36-48. They competed at the Franklin Invite on Jan 9 and will host the Minden Invite on Jan 15, starting at 3:00. Teams competing in the invite are Broken Bow, Cozad, Franklin, Cambridge, Centennial, and Minden. Andrew Gasseling is 16-3 at this time.

The Minden Speech Team and its 40 members have been preparing for their season to begin and competed in their first meet at Adams Central on Jan 9. The team will continue competitions at GISH on Jan 16 and Broken Bow on Jan 23. Good luck to the team as they start their season.

Jr. high boys basketball has begun practice with 18 - 8th graders and 16 - 7th graders participating. The 7th graders will participate in the Broken Bow Jamboree games on Jan 16, and the 8th graders will participate in the McCook Jamboree games on January 16. Both will be starting at 9:00.

The Minden High School Band will continue to perform at home contests this winter and the UNK Honor Band/Choir Clinic will be held on January 25. The High School Vocal groups are preparing for the show choir competitions on February 5 in Central City and Feb 10 at UNO.

Minden High School club organizations continue to meet and prepare for upcoming events this winter. NHS is preparing for the Winter Ball on Jan 23 in the HS Gym. FCCLA District STAR competition is Jan 27 at UNK.

**Minden High School
Nebraska Chiropractic Physicians Association (NCPA)
Fall 2015 Academic All-State Awards**
Girls Cross Country – Alexandra Bauer
Boys Cross Country – Andrew Hultquist
Football – Jacob Chasek, Josiah Lovin
Girls Golf - Samantha Bendix, Paige Kristensen
Play Production - Jady Horner, Courtney Thompson
Softball - Lindsay Scanlan
Volleyball - Robin Carlson, Samantha Clapper

2015-16 NSAA Cup Class C Boys Standings

(Standings include participation & championship results points thru NSAA Football Championships)

School	BOYS Cup Points
1. Columbus Scotus	100
2. Yutan	77.5
3. Aquinas Catholic	60
=3. Malcolm	60
=3. Milford	60
=3. Norfolk Catholic	60
7. Burwell	55
=7. Minden	55
=7. Oakland-Craig	55
10. Bridgeport	50
=10. Syracuse	50

The second grade teachers attended their respective Professional Learning Community day at ESU 11 on December 15th. Teachers were given information concerning the new Language Arts standards and were able to collaborate in order to create lessons that meet these standards.

December 17th was a day of collaboration at East. Each grade level team met with Sandy and the Special Education/Title staff to make instructional decisions based on winter MAP testing and classroom assessment data.

“Jingle All the Way” was a fantastic production put on by Miss Lori Scluntz and 2nd/3rd grade students on December 14th. Each 3rd grade student successfully delivered their own line in the holiday themed musical. The 3rd grade students then entertained the Rotary club the next day while singing songs from their musical production.



A school-wide sing along was held during the afternoon of December 18th. During the sing along students sang carols, students received special recognition for using integrity throughout the month, and special visitors from the North Pole visited with students.



The PAC committee purchased gym wall mats from Louisville school. The mats have been mounted on the gym walls of East as a preventative safety measure.



Minden Public Schools

Minden High School

Monthly School Board Meeting (January 2016)

Mr. Hosick-Principal's Report

1. Second Semester:

Second semester is off and running. We are happy to have three new students enroll at the high school for 2nd semester. They include: 1-freshman boy, 1-sophomore girl, and 1-senior boy.

2. Minden Invitational Wrestling Tournament:

On Friday, January 15th 2016 we will have a 1:10 p.m. dismissal due to the Minden Invitational Wrestling Tournament. If you are available that afternoon, please stop by to see what I am sure will be some great wrestling.

3. Professional Development/Technology Update:

The high school staff did a nice job increasing their knowledge and use of technology during our 1st semester professional development time. We hope to see that same growth during the 2nd semester phase of professional development.

Our goal at the high school is to transition from our current static classroom-based i-pads carts to a more student based "1- to -1" building by the Fall of 2016. The actual issuing of i-pads would occur when students arrive on campus in August 2016.

Below I have included a few resources that we have used during our professional development time with the staff. Please feel free to click on the links I have provided. Your feedback or questions are always welcome.

TEDx-Talk Video:

TEDx-Talk Video series is a valuable resource of information. They have videos covering thousands of topics. This is just one of many...

[Reimagining Classrooms: Teachers as Learners and Students as Leaders](#)

Common Sense Media/Common Sense Education:

Common Sense Media provides teachers, schools, and parents with free research-based tools to help parents, teachers, and students harness technology for learning and life. Their K–12 Digital Citizenship Curriculum teaches students how to make safe, smart, and ethical decisions in the digital world. Their revolutionary educational rating system, Graphite, helps teachers discover, use, and share high-quality digital products that assist student learning.

Common Sense Media also help families make smart media choices. They offer the largest, most trusted library of independent age-based and educational ratings and reviews for movies, games, apps, TV shows, websites, books, and music.

[Common Sense 1- to - 1 Essentials](#)

SAMR Model:

SAMR is an instructional model designed to help educators infuse technology into teaching and learning. The model supports and enables teachers to design, develop, and infuse digital learning experiences that utilize technology. For many decades educators have used the Bloom's Taxonomy model as a tool to structure their lessons, the SAMR model is a modern technological version in some ways parallels Bloom's. The SAMR model is one that you will see and hear more about in the future, which is another reason why I wanted to show this short video.

[SAMR Model explained in 120 Seconds](#)



PCCO #001

Boyd Jones Construction
4360 Nicholas St.
Omaha, Nebraska 68131
Phone: (402) 553-1804
Fax: (402) 561-7705

Project: 13-047 - Minden Public Schools
622 W. 3rd St.
Minden, Nebraska 68959

Prime Contract Change Order #001: RCO#1

TO:	Minden Public Schools 520 West 3rd St. Minden, Nebraska 68959	FROM:	Boyd Jones Construction Company 4360 Nicholas, P.O. Box 31336 Omaha Nebraska 68131
DATE CREATED:	12/09/2015	CREATED BY:	Tim Meyer (Boyd Jones Construction Company)
CONTRACT STATUS:	Pending - In Review	REVISION:	0
DESIGNATED REVIEWER:		REVIEWED BY:	
DUE DATE:		REVIEW DATE:	
INVOICED DATE:		PAID DATE:	
SCHEDULE IMPACT:	0 days	EXECUTED:	No
CONTRACT FOR:	1:Kearney County School District Prime Contract	TOTAL AMOUNT:	\$23,543.20

DESCRIPTION:

ATTACHMENTS:

PCO#2 Samuelson.pdf PCO#1 Samuelson.pdf PCO#1 Vision.pdf

CHANGE ORDER REQUESTS IN THIS CHANGE ORDER:

COR #	Title	Schedule Impact	Amount
001	RCO#1	0 days	\$23,543.20
TOTAL:			\$23,543.20

CHANGE ORDER LINE ITEMS:

PCO #003:Alternate #4: Cast-in-Place Locker Room Benches

#	Cost Code	Description	Type	Amount
1	3-250 - Reinforcing Steel - Materials	Rebar	Material	\$670.00
2	3-300 - Foundation Concrete	Add Concrete	Sub Contracts	\$9,819.00
3	5-010 - Struct/Misc Steel	Delete Steel Angle	Material	(\$1,712.31)
4	10-500 - Lockers	Delete Wood Benches	Sub Contracts	(\$3,350.00)
Subtotal:				\$5,426.69
CMR Fee: 3.28% on Fringes, Sub Contracts, Equipment, Material, Other, and Labor				177.99
Bond: 0.88% on Fringes, Sub Contracts, Equipment, Material, Other, and Labor				49.32
Grand Total:				\$5,654.00

PCO #002:RFI#12: Existing Well Shaft

#	Cost Code	Description	Type	Amount
1	2-002 - Earthwork	Decommission Well	Sub Contracts	\$800.00
Subtotal:				\$800.00
Fee: 3.28% on Fringes, Sub Contracts, Equipment, Material, Other, and Labor				26.24
Bond: 0.88% on Fringes, Sub Contracts, Equipment, Material, Other, and Labor				7.27
Grand Total:				\$833.51

PCO #001:RFI#7: Redirect South Middle School Water Service

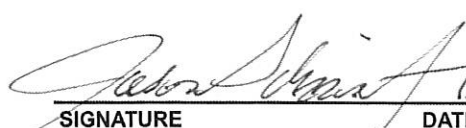
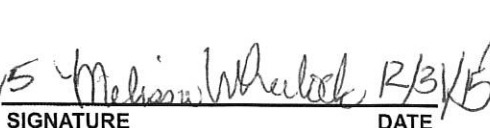
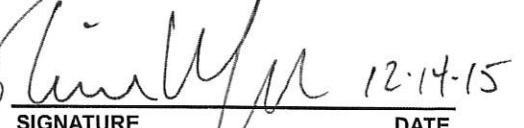
#	Cost Code	Description	Type	Amount
1	2-650 - Public Utilities	Add 3" Water Service from middle school to 3rd St.	Sub Contracts	\$15,419.97
2	2-002 - Earthwork	Demo concrete retaining wall and saw cut 3rd St. for new water service per RFI#7	Sub Contracts	\$950.00
Subtotal:				\$16,369.97
3.28% Fee: 3.28% on Fringes, Sub Contracts, Equipment, Material, Other, and Labor				536.94
Payment & Performance Bond: 0.88% on Fringes, Sub Contracts, Equipment, Material, Other, and Labor				148.78
Grand Total:				\$17,055.69

The original (Contract Sum)	\$22,421,484.00
Net change by previously authorized Change Orders	\$0.00
The contract sum prior to this Change Order was	\$22,421,484.00
The contract sum will be increased by this Change Order in the amount of	\$23,543.20
The new contract sum including this Change Order will be	\$22,445,027.20
The contract time will not be changed by this Change Order	

Jason Schmitz (DLR Group - Omaha)
 6457 Frances Street, Suite 200
 Omaha Nebraska 68106-2280

Minden Public Schools
 520 West 3rd St.
 Minden Nebraska 68959

Boyd Jones Construction Company
 4360 Nicholas, P.O. Box 31336
 Omaha Nebraska 68131

 12-30-15
  R/B/K/E
  12-14-15
 SIGNATURE DATE SIGNATURE DATE SIGNATURE DATE



PCCO #002

Boyd Jones Construction
4360 Nicholas St.
Omaha, Nebraska 68131
Phone: (402) 553-1804
Fax: (402) 561-7705

Project: 13-047 - Minden Public Schools
622 W. 3rd St.
Minden, Nebraska 68959

Prime Contract Change Order #002: Utility Changes per RFIs#8, #13, & #20

TO:	Minden Public Schools 520 West 3rd St. Minden, Nebraska 68959	FROM:	Boyd Jones Construction Company 4360 Nicholas, P.O. Box 31336 Omaha Nebraska 68131
DATE CREATED:	1/05/2016	CREATED BY:	Tim Meyer (Boyd Jones Construction Company)
CONTRACT STATUS:	Approved	REVISION:	0
DESIGNATED REVIEWER:	Tim Meyer (Boyd Jones Construction Company)	REVIEWED BY:	Tim Meyer (Boyd Jones Construction Company)
DUE DATE:		REVIEW DATE:	01/05/2016
INVOICED DATE:		PAID DATE:	
SCHEDULE IMPACT:	0 days	EXECUTED:	No
CONTRACT FOR:	1:Kearney County School District Prime Contract	TOTAL AMOUNT:	\$22,775.36

DESCRIPTION:

Provide modifications to the contract documents as indicated in RFIs#8, #13, & #20. This includes providing temporary piping for the three unknown roof drain pipes exiting the middle school on the west side, adding three short runs of permanent storm pipe to pick up these roof drains once the storm system is in place, modifying the size of the storm pipe in the new high school to pick-up this additional unexpected water, add storm structure at north to connect to unknown roof drain lines on north side of middle school, add storm pipe for this new storm work, modify storm line sizes downstream of this new storm structure, add a 4" sanitary line and clean-out on the north side of the middle school to pick-up the unknown sanitary line found there, and raising the north fire hydrant 7". (CE#6)

ATTACHMENTS:

[Midlands Contracting - RFI#20.pdf](#) [Midlands Contracting - RFI#8_13.pdf](#) [Temp Pipe Materials and Samuelson.pdf](#) [Midlands Mechanical_RFI 13_1528000_2015-11-11.pdf](#)

CHANGE ORDER REQUESTS IN THIS CHANGE ORDER:

COR #	Title	Schedule Impact	Amount
002	Utility Changes per RFIs#8, #13, & #20		\$22,775.36
TOTAL:			\$22,775.36

CHANGE ORDER LINE ITEMS:

PCO #006: Utility Changes per RFIs #8, #13, & #20

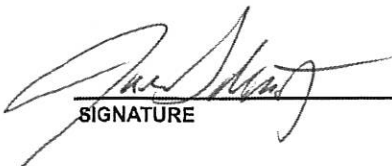
#	Cost Code	Description	Type	Amount
1	2-660 - Site Utilities	Midlands Contracting - North & West Sewer Additions	Sub Contracts	\$11,996.00
2	2-660 - Site Utilities	Midlands Contracting - Raise Fire Hydrant	Sub Contracts	\$2,025.00
3	2-002 - Earthwork	Samuelson - Install & remove temporary storm pipe	Sub Contracts	\$400.00
4	2-650 - Public Utilities	Temporary Storm Pipe & Hanging Material	Material	\$2,387.69
5	15-010 - Mechanical	Increase plumbing pipe diameters	Sub Contracts	\$5,051.00
Subtotal:				\$21,859.69
CM Fee: 3.28% on Fringes, Sub Contracts, Equipment, Material, Other, and Labor				717.00
Bond Fee: 0.88% on Fringes, Sub Contracts, Equipment, Material, Other, and Labor				198.57
Grand Total:				\$22,775.36

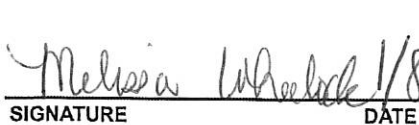
The original (Contract Sum)	\$22,421,484.00
Net change by previously authorized Change Orders	\$23,543.20
The contract sum prior to this Change Order was	\$22,445,027.20
The contract sum will be increased by this Change Order in the amount of	\$22,775.36
The new contract sum including this Change Order will be	\$22,467,802.56
The contract time will not be changed by this Change Order	

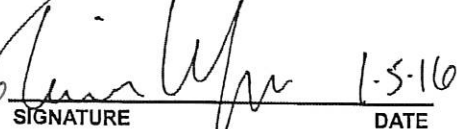
Jason Schmitz (DLR Group - Omaha)
 6457 Frances Street, Suite 200
 Omaha Nebraska 68106-2280

Minden Public Schools
 520 West 3rd St.
 Minden Nebraska 68959

Boyd Jones Construction Company
 4360 Nicholas, P.O. Box 31336
 Omaha Nebraska 68131

 1-8-2015
 SIGNATURE DATE

 1/8/16
 SIGNATURE DATE

 1-5-16
 SIGNATURE DATE

REQUEST FOR CHANGE ORDER



MIDLANDS CONTRACTING, INC.
P O BOX 1065
KEARNEY NE 68848-1065
PHONE: 308-237-7979
FAX: 308-234-5390

PROJECT: MINDEN – NEW HIGH SCHOOL & MIDDLE SCHOOL
PROJECT #:

RFCO #: 1 – RFI #20
DATE:

To: BOYD JONES

ATTN: TIM

CONTRACT DATE:

AMOUNT OF ORIG. CONTRACT: \$

PROPOSED CHANGES:	COST OF CHANGES:	CHANGE TO CONTRACT TIME:
1. Fire Hydrant Extension	\$2,025	
2.		
3.		
4.		
5.		
TOTALS	\$2,025	

Transmitted via: E-Mail

Copied to: File

Troy Cumpston
Project Manager



MIDLANDS CONTRACTING, INC.
P.O. Box 1065
Kearney, Nebraska 68848
(308) 237-7979 Fax: (308) 234-5390

PROPOSAL

PROPOSAL SUBMITTED TO:	BOYD JONES CONSTRUCTION	DATE:	10/28/15
ATTENTION:	TIM MEYER	PROJECT NAME:	MINDEN HIGH SCHOOL & MIDDLE SCHOOL RENOVATIONS
ADDRESS:		PROJECT LOCATION:	MINDEN, NE
PHONE: (402) 553-1804		ENGINEER:	DLR GROUP

SCOPE OF BID: CHANGES AS A RESULT OF RFI #8 & #13

Add:

- 80 lf 4" SDR26 Sewer Service w/bedding
- 1 ea 4" Cleanout
- 2 ea 4" Connections
- 33 lf 6" SDR26 Storm Drain Line
- 642 lf 15" HDPE N-12 Storm Drain Line
- 1 ea 15" RC Flared End Section
- 2 ea Connect to Roof Drain Lines
- 69 lf Bedding Material for Storm Drain
- Adjusted the height of 1 PVC Manhole

Delete:

- 135 lf 8" Storm Drain
- 449 lf 12" Storm Drain
- 1 ea 12" RC Flared End Section

TOTAL ADD TO OUR CONTRACT: \$11,996.00



MIDLANDS CONTRACTING, INC.
 P.O. Box 1065
 Kearney, Nebraska 68848
 (308) 237-7979 Fax: (308) 234-5390

PROPOSAL

CLARIFICATIONS:

1. We DO NOT include the 3" water line as shown on C5.1-1 dated October 5th. This should be plumber work.

We propose to furnish material and labor, complete in accordance with the above specifications, for the sum of: \$11,996.00

Payment to be made as follows: Paid in Full upon Completion

All material is guaranteed to be as specified. All work to be completed in a workmanlike manner according to specifications submitted per standard practices. Any alteration or deviation from above specifications involving extra costs will be executed only upon written orders, and will become an extra charge over and above the estimate. All agreements contingent upon strikes, accidents or delays beyond our control. Owner to carry fire, tornado and other necessary insurance. Our workers are fully covered by Workman's Compensation Insurance

Authorized Signature:

We may withdraw this proposal if not accepted within 15 days.

Acceptance of Proposal – The above prices, specifications and conditions are satisfactory and are hereby accepted. You are authorized to do the work as specified. Payment will be made as outlined above.

Signature:

Date of Acceptance:

Signature:

r

Midlands Mechanical, Inc.

Date: 11/11/2015

Project Name: Minden High School/Middle School Renovations

Location: Minden NE

Architects Proj. # 13-047

MMI Project #: 1528000

CPR, RFP, ASI, ESI, RFI Reference #: RFI 13 Change 12" storm line to 16"

Description of Proposed Changes

Included in this Proposal: Increase line size of storm drain from 12" to 16" (15" not available in PVC)

Excluded from this proposal:

Clarifications:

- o This contractor shall not be held liable for errors or omissions in designs by others, nor inadequacies of materials and equipment specified or supplied by others.
 - o Equipment and materials supplied by the contractor are warranted only to the extent that the same are warranted by the manufacturer.
 - o Warranties shall apply exclusively to the mechanical installation of the material, fixtures, equipment, and other items supplied by the mechanical contractor.
- Warranty does not apply to:
- Material, fixtures, equipment and other items supplied by others.
 - Extensions or additions to the original installation if made by other parties.
 - Mechanical installation shall meet the Uniform Plumbing Code and local building codes. Errors in design by the architect and/or engineer are not the responsibility of Midlands Mechanical, Inc. Any additional piping, fixtures, equipment, etc. not indicated on plans and specifications that are required by other (i.e., Inspectors) shall not be part of this proposal.
 - o Anything (verbal or written) expressed or implied elsewhere, which is contrary to these conditions shall be null and void.
 - o Any alterations or deviation from the above specifications involving extra cost of material or labor will only be executed upon written orders for same, and will become an extra charge over the sum mentioned in this proposal.

Labor Description	Hours	Labor Rate	Totals
Plumber Labor	17.22	\$ 28.00	\$ 482.16
Plumber Labor Overtime	0	\$ 42.00	\$ -
Pipe Fitter Labor	0	\$ 28.00	\$ -
Pipe Fitter Labor Overtime	0	\$ 42.00	\$ -
Foreman @ 10% Labor	1.722	\$ 37.00	\$ 63.71
Foreman Overtime @ 10% Labor	0	\$ 55.50	\$ -
Small Tools	4%	of labor	\$ 21.83
Testing	3%	of labor	\$ 16.38
Safety and OSHA	2%	of labor	\$ 10.92
Burden	43%	of labor	\$ 234.73
Labor Total:			\$ 829.73

Material		\$	3,335.00
Sales Tax on Material	0.0%	\$	-
Material Total:			\$ 3,335.00

Other Expenses Description	Quantity/Duration	Rates	Totals
Equipment Rental (Listed Below)			
	0	\$ -	\$ -
	0	\$ -	\$ -
	0	\$ -	\$ -
Fuel for Rentals	0	\$ -	\$ -
Parking	0	\$ -	\$ -
Truck Expense	18.94	\$ 0.88	\$ 16.67
Storage	0	\$ -	\$ -
Delivery	0	\$ -	\$ -
Subsistence & Motel	1.8942	\$ 110.00	\$ 208.36
Other Expenses (Listed Below)			
	0	\$ -	\$ -
	0	\$ -	\$ -
	0	\$ -	\$ -
Sales Tax on Other Expenses		7.0%	\$ 15.75
Other Expenses Total:			\$ 240.78

Warranty	3%	\$	132.17
Overhead	5%	\$	220.28
Sub-Total of Direct Work:			\$ 4,757.95
Profit	5%	\$	237.90
Direct Work Total:			\$ 4,995.85

Sub-Contractor (Excavation and Backfill)		\$	-
Sub-Contractor (HVAC Sheet Metal)		\$	-
Sub-Contractor (Insulation)		\$	-
Sub-Contractor (Chemical Treatment)		\$	-
Sub-Contractor		\$	-
Sub-Contractor Sub-Total:			\$ -
Sub-Contractor Mark-Up	5%	\$	-
Sub-Contractor Total:			\$ -
Total of Direct Work Plus Sub-Contractor Total:			\$ 4,995.85

Bond	1.10%	\$	54.95
Total Change Amount:			\$ 5,051

PROCESS PIPING • HVAC • PLUMBING

JOB 306 ES2576: OMA MINDEN HIG...
 ESTIMATE 3 ES2576: RFI 13 Storm drain ...
 DATA SET 12 MMI Master Dataset 8.11.14 ...

(Company Name)
 (Company Address 1)
 (Company Address 2)
 (Company Address 3)
 (Company Phone) / (Company Fax)
 pfrank@midmechinc.com

PRINTED 11/11/2015 9:31:56 AM
 MATERIAL Primary
 LABOR Primary

NOTES

Item							Material			Field Labor		
UPC Code	Buyer Code	Category	Size	Item Desc	Qty	U...	Mat Unit	Mat Adj	Mat Ext	Fld Unit	Fld Adj	Fld Ext
Section : Section 008: STRM/BG - STORM B/G												
Category : Category 101: PVC SCH 40--DWW												
611942049...	016CH0021	PVC SCH 40--DWW	16"	PIPE-SCH 40 ...	140.00	'	19.78	1.00	2,769.20	0.3000	1.0000	42.0000
	124GK7025	PVC SCH 40--DWW	16"	1/8 BEND -- Hx...	1.00	ea	224.59	1.00	224.59	3.2500	1.0000	3.2500
	124GK6748	PVC SCH 40--DWW	16"	WYE -ALL-H-600	1.00	ea	478.38	1.00	478.38	6.0000	1.0000	6.0000
		PVC SCH 40--DWW	Unsize	EXCAVATION	140.00	cu....	> Manu...	1.00	> 0.00 <	> Manu...	1.0000	> 0.000...
		PVC SCH 40--DWW	4"	JOINTS	2.00	ea	Skip	1.00	0.00	Skip	1.0000	0.0000
		PVC SCH 40--DWW	6"	JOINTS	1.00	ea	Skip	1.00	0.00	Skip	1.0000	0.0000
		PVC SCH 40--DWW	8"	JOINTS	2.00	ea	Skip	1.00	0.00	Skip	1.0000	0.0000
		PVC SCH 40--DWW	10"	JOINTS	1.00	ea	Skip	1.00	0.00	Skip	1.0000	0.0000
		PVC SCH 40--DWW	16"	JOINTS	26.00	ea	Skip	1.00	0.00	Skip	1.0000	0.0000
		PVC SCH 40--DWW	Unsize	CEMENT--PVC...	3.00	ea	15.00	1.00	45.00	Skip	1.0000	0.0000
		PVC SCH 40--DWW	Unsize	CLEANER--PV...	2.00	ea	15.00	1.00	30.00	Skip	1.0000	0.0000
	124GK6742	PVC SCH 40--DWW	16" x4"	RED WYE-ALL...	1.00	ea	335.49	1.00	335.49	7.0000	1.0000	7.0000
	124GK6743	PVC SCH 40--DWW	16" x6"	RED WYE-ALL...	1.00	ea	343.49	1.00	343.49	7.0000	1.0000	7.0000
	124GK6745	PVC SCH 40--DWW	16" x10"	RED WYE-ALL...	1.00	ea	465.40	1.00	465.40	7.0000	1.0000	7.0000
	124GK6833	PVC SCH 40--DWW	8" x4"	REDUCER -- H...	1.00	ea	29.90	1.00	29.90	1.1000	1.0000	1.1000
	124GK6849	PVC SCH 40--DWW	16" x8"	REDUCER -- H...	1.00	ea	148.79	1.00	148.79	5.5000	1.0000	5.5000
	124GK6714	PVC SCH 40--DWW	16"	COUPLING -- ...	7.00	ea	111.25	1.00	778.75	Manual	1.0000	0.0000
Subtotals for Category : Category 101: PVC SCH 40--DWW									5,648...		78.8500	
Subtotals for Section : Section 008: STRM/BG - STORM B/G									5,648...		78.8500	
Grand Totals									5,648...		78.8500	

JOB 306 ES2576: OMA MINDEN HIG...
 ESTIMATE 3 ES2576: RFI 13 Storm drain ...
 DATA SET 12 MMI Master Dataset 8.11.14 ...

(Company Name)
 (Company Address 1)
 (Company Address 2)
 (Company Address 3)
 (Company Phone) / (Company Fax)
 pfrank@midmechinc.com

PRINTED 11/11/2015 9:36:45 AM
 MATERIAL Primary
 LABOR Primary

NOTES

Item							Material			Field Labor		
UPC Code	Buyer Code	Category	Size	Item Desc	Qty	U...	Mat Unit	Mat Adj	Mat Ext	Fld Unit	Fld Adj	Fld Ext
Section : Section 009: STRM/AG - STORM A/G												
Category : Category 101: PVC SCH 40--DWW												
611942039...	016CH0019	PVC SCH 40--DWW	12"	PIPE-SCH 40 ...	140.00	'	9.70	1.00	1,358.00	0.2500	1.0000	35.0000
611942100...	118CH1438	PVC SCH 40--DWW	12"	1/8 BEND -- Hx...	1.00	ea	63.02	1.00	63.02	2.2000	1.0000	2.2000
611942100...	118CH4068	PVC SCH 40--DWW	12"	WYE -ALL-H-600	1.00	ea	163.78	1.00	163.78	4.0000	1.0000	4.0000
		PVC SCH 40--DWW	4"	JOINTS	2.00	ea	Skip	1.00	0.00	Skip	1.0000	0.0000
		PVC SCH 40--DWW	6"	JOINTS	1.00	ea	Skip	1.00	0.00	Skip	1.0000	0.0000
		PVC SCH 40--DWW	10"	JOINTS	1.00	ea	Skip	1.00	0.00	Skip	1.0000	0.0000
		PVC SCH 40--DWW	12"	JOINTS	26.00	ea	Skip	1.00	0.00	Skip	1.0000	0.0000
		PVC SCH 40--DWW	Unsize	CEMENT--PVC...	2.00	ea	15.00	1.00	30.00	Skip	1.0000	0.0000
		PVC SCH 40--DWW	Unsize	CLEANER--PV...	1.00	ea	15.00	1.00	15.00	Skip	1.0000	0.0000
611942102...	118CH412...	PVC SCH 40--DWW	12" x4"	RED WYE-ALL...	1.00	ea	103.00	1.00	103.00	6.0000	1.0000	6.0000
611942102...	118CH412...	PVC SCH 40--DWW	12" x6"	RED WYE-ALL...	1.00	ea	97.12	1.00	97.12	6.0000	1.0000	6.0000
611942100...	118CH412...	PVC SCH 40--DWW	12" x10"	RED WYE-ALL...	1.00	ea	130.05	1.00	130.05	6.0000	1.0000	6.0000
	124GK6838	PVC SCH 40--DWW	12" x4"	REDUCER -- H...	1.00	ea	60.19	1.00	60.19	2.4300	1.0000	2.4300
	124GK6712	PVC SCH 40--DWW	12"	COUPLING -- ...	7.00	ea	41.89	1.00	293.23	Manual	1.0000	0.0000
Subtotals for Category : Category 101: PVC SCH 40--DWW									2,313...	61.6300		
Category : Category 955: HANGERS & CLAMPS ETC												
690291140...	034GR0211	HANGERS & CLAM...	14"	#260 ADJ. CL...	0.00	ea	26.53	1.00	0.00	1.1500	1.0000	0.0000
690291137...	034GR3476	HANGERS & CLAM...	7/8"	#146 ALL THR...	0.00	'	8.05	1.00	0.00	Skip	1.0000	0.0000
		HANGERS & CLAM...	7/8"	#94 1-1/4" JA...	0.00	ea	4.00	1.00	0.00	Manual	1.0000	0.0000
Subtotals for Category : Category 955: HANGERS & CLAMPS ETC									0.00	0.0000		
Category : Category 956: HANGER-R.CLAMP-ETC.												
670572319...	034CP3676	HANGER-R.CLAMP...	7/8"	FIG.165H-HEX...	0.00	ea	0.55	1.00	0.00	Skip	1.0000	0.0000
		HANGER-R.CLAMP...	7/8"	FIG.103-WASH...	0.00	ea	0.42	1.00	0.00	Skip	1.0000	0.0000
Subtotals for Category : Category 956: HANGER-R.CLAMP-ETC.									0.00	0.0000		
Subtotals for Section : Section 009: STRM/AG - STORM A/G									2,313...	61.6300		
Grand Totals									2,313...	61.6300		

Deduct per RFI 13

Boyd Jones

CONSTRUCTION

PROJECT Minden High School

COR # 6

PROJECT NO. _____

DATE _____

Summary of temporary roof drains

Pipe & Hanging Materials

9.29.15 ACE Eaton	2,045.32
10.6.15 Ace Eaton	61.59
9.30.15 Minden Lumber	87.04
Merards	40.82
Merards	152.92
	<hr/>
	\$2,387.69

Install & Remove

Samuelson

\$ 400.00

ACE EATON METALS
4740 E 39TH STREET
KEARNEY, NE 68847
PHONE # (308) 237-5173

SALE

MID: 000019526164
TID: 001 REF#: 000000001
Bank ID: 6001
Batch #: 272001
09/28/15
APPR CODE: 319242
VISA
*****3786

13:10:32

Swiped
4/1*

AMOUNT \$2,045.32

APPROVED

THANK YOU
HAVE A NICE DAY
CUSTOMER COPY

**IGATION AND MFG. CO.
E/EATON METALS**

CREATING THE BEST WATER COLLECTION PIPING ACCESSORIES
FOR YOUR BUSINESS AND COMMUNITY

401 E 39th Street, NE 68847-3786
701/NE 68847-9789
800/888-8888 FAX 701/246-5700
www.aceeaton.com

13000 13000 MAIL

13000 13000 MAIL

S H
I P T O
MINDEN PUBLIC SCHEDULE ROOF DRAINS"
WORK ORDER

NO MERCHANDISE TO BE RETURNED WITHOUT
AUTHORIZATION FROM THIS OFFICE CLAIMS FOR
SHORTAGE TO BE MADE WITHIN TEN DAYS.

DATE	W/O INVOICE NO.	SALESPERSON
9/29/2015	189062	CODY

CUST NUMBER	BACKORDERED FROM	BACKORDERED TO	DATE SHIPPED	SHIPPED VIA	TERMS
13000				SELF	NET 30
					PAGE 1 OF 1

ORD	QTY SHIP	QTY BVO	DESCRIPTION	LIST PRICE	UNIT	NET EACH	NET AMOUNT
13000	4		3" PIP 51.0 50 DEG 5" 80# SXS 30 PSI/SDR 51 SLIP X SLIP SAME AS #0582698	120.56	EA	54.2520	162.76
13000	2		3" PIP THE 3" 80# SSS 30 PSI/SDR 51 SLIP X SLIP	97.61	EA	44.8245	87.65
13000	3		3" X 8" COUPLER HEAVY DUTY FLEXIBLE SEWER	44.00	EACH	50.8000	92.40
13000	43		3" X 20' 100 PSI PVC PIPE	7.80	FT	3.9000	1794.00

13-047
2-650

Temp Pipe #13
K1 #13

Somuc/son is asking \$400 to lay it.

SUBTOTAL	2126.81
SALES TAX	117.69
TOTAL	2244.50

CONTACT 219 12 IF PAID IN TEN DAYS

A FINANCE CHARGE AT THE MAXIMUM LEGAL RATE, WILL BE ADDED TO ALL PAST DUE ACCOUNTS.

13045.32

13-047 Temp Roof
drain RFI#13
2-650

MENARDS - KEARNEY
6411 1st Avenue
Kearney, NE 68847

KEEP YOUR RECEIPT
RETURN POLICY VARIES BY PRODUCT TYPE

Unless noted below allowable returns for
items on this receipt will be in the form
of an in store credit voucher if the
return is done after 01/03/16

If you have questions regarding the
charges on your receipt, please
email us at:

KRNYfrontend@menards.com



Sale Transaction

36" HVY-D TIE 10/BAG		
3641346	3 @5.49	16.47
CLOROX DISINFECT WIPES		
8471114		5.88
2X6-8' STUD/#2&BTR SPF		
1021758	4 @3.95	15.80
TOTAL		38.15
TAX KEARNEY-NE 7%		2.67
TOTAL SALE		40.82
VISA 7465		40.82
715084		
Swiped		

TOTAL NUMBER OF ITEMS = 8

THE FOLLOWING REBATE RECEIPTS WERE
PRINTED FOR THIS TRANSACTION:
3905

13-047 RFI#13
 temp Route of Post
 Use Your  2% *draws*
 BIG CARD REBATE
 2-650 **MENARDS**

MENARDS - KEARNEY
 6411 1st Avenue
 Kearney, NE 68847

KEEP YOUR RECEIPT
 RETURN POLICY VARIES BY PRODUCT TYPE

Unless noted below allowable returns for items on this receipt will be in the form of an in store credit voucher if the return is done after 12/29/15

If you have questions regarding the charges on your receipt, please email us at:
 KRNYfrontend@menards.com



Sale Transaction

4" X 2' SDR 35 PIPE		
6899708	2 @6.99	13.98
4"XB' SOLIDRAIN PIPE		
6893771		4.97
6" X 6" FLEX COUPLING		
6895235	2 @17.99	35.98
6" X 4" FLEXIBLE COUPLIN		
6895112	2 @15.99	31.98
3/4"X50' GALV PIPE STRAP		
6933537	2 @5.40	10.80
5/16" NUTSETTER 6" 1PK		
2520732		5.98
3/16X4-1/2 CNCT SCREW BI#		
2522614	2 @2.67	5.34
5/16" NUTSET 1-7/8" 1PK		
2520706		1.47
HAMMER-SET 1/4X2 50PK		
2328038		13.48
TAPCON HEX 1/4X1-3/4		
2327105		18.94
TOTAL		142.92
TAX KEARNEY-NE 7%		10.00
TOTAL SALE		152.92
VISA 7465		152.92
700340		
Swiped		

TOTAL SAVINGS 0.80
 TOTAL NUMBER OF ITEMS = 15

GUEST COPY

The Cardholder acknowledges receipt of goods/services in the total amount shown hereon and agrees to pay the card issuer according to its current terms.

THIS IS YOUR CREDIT CARD SALES SLIP
 PLEASE RETAIN FOR YOUR RECORDS.

Now Hiring

13-047 *draws*

Use Your  2%
 BIG CARD REBATE
MENARDS

MENARDS - KEARNEY
 6411 1st Avenue
 Kearney, NE 68847

KEEP YOUR RECEIPT
 RETURN POLICY VARIES BY PRODUCT TYPE

Unless noted below allowable returns for items on this receipt will be in the form of an in store credit voucher if the return is done after 12/29/15

If you have questions regarding the charges on your receipt, please email us at:
 KRNYfrontend@menards.com



Sale Transaction

LED SHOPLIGHT 3600L		
3481426		34.99
16-3 20' WHITE CORD		
3701900		5.99
FLIPTOGGLE 1/4X2-1/2 2PC		
2344103		2.98
DRILLERTOGGLE 1/4X3 W/BOL		
2340222		5.59
TOTAL		49.55
TAX KEARNEY-NE 7%		3.47
TOTAL SALE		53.02
VISA 7465		53.02
710371		
Swiped		

TOTAL NUMBER OF ITEMS = 4

GUEST COPY

The Cardholder acknowledges receipt of goods/services in the total amount shown hereon and agrees to pay the card issuer according to its current terms.

THIS IS YOUR CREDIT CARD SALES SLIP
 PLEASE RETAIN FOR YOUR RECORDS.

Now Hiring

THANK YOU, YOUR CASHIER, Ana

45177 04 5273 09/30/15 05:17PM 3200

Not Billable



PCCO #003

Boyd Jones Construction
4360 Nicholas St.
Omaha, Nebraska 68131
Phone: (402) 553-1804
Fax: (402) 561-7705

Project: 13-047 - Minden Public Schools
622 W. 3rd St.
Minden, Nebraska 68959

Prime Contract Change Order #003: COR#3 Dowel Bar Sets, ASI#3, & Primary Service Change

TO:	Minden Public Schools 520 West 3rd St. Minden, Nebraska 68959	FROM:	Boyd Jones Construction Company 4360 Nicholas, P.O. Box 31336 Omaha Nebraska 68131
DATE CREATED:	1/05/2016	CREATED BY:	Tim Meyer (Boyd Jones Construction Company)
CONTRACT STATUS:	Pending - In Review	REVISION:	0
DESIGNATED REVIEWER:		REVIEWED BY:	
DUE DATE:		REVIEW DATE:	
INVOICED DATE:		PAID DATE:	
SCHEDULE IMPACT:	0 days	EXECUTED:	No
CONTRACT FOR:	1:Kearney County School District Prime Contract	TOTAL AMOUNT:	\$0.00

DESCRIPTION:

The following PCOs will be taken out of the CMR Contingency:

PCO#7 Add Dowel Bar Sets at CIP Wall for stoops

Drake Williams Rebar = \$495

CMR Fee = \$16.24

CMR Bond = \$4.50

PCO#7 Total = \$515.74

PCO#8 Modify Hollow Core thickness per ASI#13

Concrete Industries Hollow Core = \$2,075.00

Doing Steel fabrication changes = \$948.00

CMR Fee = \$99.15

CMR Bond = \$27.47

PCO#8 Total = \$3,149.62

PCO#12 Modify location where NPPD needs our primary electrical service to start (increasing bore distance)

Cornerstone Electric = \$768.20

CMR Fee = \$25.20

CMR Bond = \$6.98

PCO#12 Total = \$800.38

ATTACHMENTS:

[PCO#12 Cornerstone.pdf](#) [PCO#8 ASI#3 Doing.pdf](#) [PCO#8 ASI#3 Concrete Ind..pdf](#) [PCO#7 Drake Williams Dowel Bar Subs \(BJC Contingency\).pdf](#)

CHANGE ORDER REQUESTS IN THIS CHANGE ORDER:

COR #	Title	Schedule Impact	Amount
003	COR#3	0 days	\$0.00
TOTAL:			\$0.00

CHANGE ORDER LINE ITEMS:

PCO #012: Increase Primary Electric Service Distance

#	Cost Code	Description	Type	Amount
1	16-010 - Electrical	Increase Primary Service Bore	Sub Contracts	\$0.00
Subtotal:				\$0.00
CMR Fee: 3.28% on Fringes, Sub Contracts, Equipment, Material, Other, and Labor				0.00
CMR Bond: 0.88% on Fringes, Sub Contracts, Equipment, Material, Other, and Labor				0.00
Grand Total:				\$0.00

PCO #008: ASI#3: Modify Hollow Core Thickness (Add 12")

#	Cost Code	Description	Type	Amount
1	3-500 - Cementitious Decks	ASI#3 Concrete Industries	Material	\$0.00
2	5-010 - Struct/Misc Steel	ASI#3: Doing Steel	Material	\$0.00
Subtotal:				\$0.00
CMR Fee: 3.28% on Fringes, Sub Contracts, Equipment, Material, Other, and Labor				0.00
Bond: 0.88% on Fringes, Sub Contracts, Equipment, Material, Other, and Labor				0.00
Grand Total:				\$0.00

PCO #007: Dowel Bar Sets (CMR CONT)

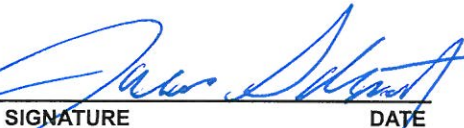
#	Cost Code	Description	Type	Amount
1	3-250 - Reinforcing Steel - Materials	Dowel Bar Sets	Material	\$0.00
Subtotal:				\$0.00
CMR Fee: 3.28% on Fringes, Sub Contracts, Equipment, Material, Other, and Labor				0.00
Bond: 0.88% on Fringes, Sub Contracts, Equipment, Material, Other, and Labor				0.00
Grand Total:				\$0.00

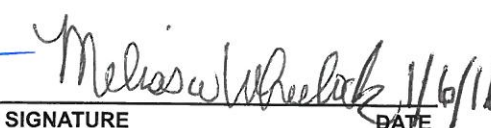
The original (Contract Sum)	\$22,421,484.00
Net change by previously authorized Change Orders	\$46,318.56
The contract sum prior to this Change Order was	\$22,467,802.56
The contract sum will not be changed by this Change Order in the amount of	\$0.00
The new contract sum including this Change Order will be	\$22,467,802.56
The contract time will not be changed by this Change Order	

Jason Schmitz (DLR Group - Omaha)
6457 Frances Street, Suite 200
Omaha Nebraska 68106-2280

Minden Public Schools
520 West 3rd St.
Minden Nebraska 68959

Boyd Jones Construction Company
4360 Nicholas, P.O. Box 31336
Omaha Nebraska 68131


SIGNATURE DATE


SIGNATURE DATE 1/6/16


SIGNATURE DATE 1.6.16



ALTERNATE FLOORING BIDS

Project: Minden High School and Select Renovations of Middle School
Minden, NE

Base Bid (Spec 096513, 096519 Base Bid to be for (5) colors of Armstrong Standard Excelon VCT in lieu of Azrock Cortina Grande VCT (SVT), 096813) = \$229,500.00

Alternate #1B (Provide LVT per Alt. #1 specifications in lieu of Standard VCT at rooms A100, A101, A102, A105, A107, A110, A113, A122, A200, A211, A214, A215, A219, A220, A220A, A235, B100, B105, B110, B112, B113, B128, B138, B148, B200, B208, B212, B213, B214, B217, C101, C102, C111, C210, C211, D200, H201, H204, H205, H206, H210, H217, H219):
ADD \$52,647.00.

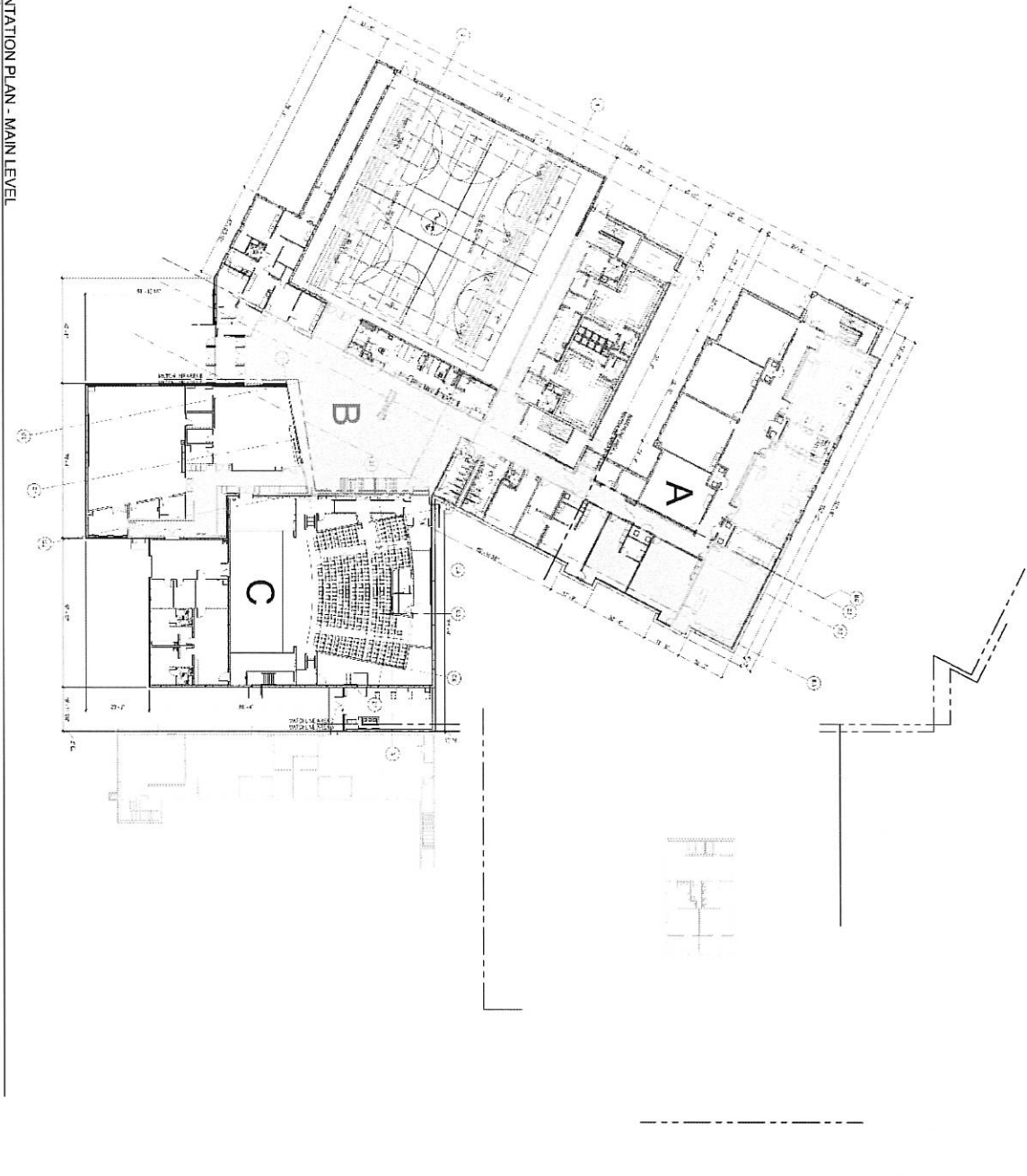
Alternate #1C (Provide LVT per Alt. #1 specifications in lieu of Standard VCT at rooms A100, A105, A107, A110, A113, A122, A200, A211, A215, A219, A220, A220A, A235, B100, B105, B110, B112, B113, B128, B138, B148, B200, B208, B212, B213, B214, B217, C101, C102, C111, C210, C211, D200, H201, H204, H205):
ADD \$44,200.00.

Alternate #1D (Provide LVT per Alt. #1 specifications in lieu of Standard VCT at rooms B110, B112, B113, B128):
ADD \$12,300.00.

Alternate #1E (Provide RST-1 & RT-1 at rooms A114, A227, B155, B218, C132, C136):
ADD \$23,734.00.

Alternate #1F (Provide abrasive metal nosings at A114, A227, B155, B218, C132, & C136):
ADD \$7,428.66.

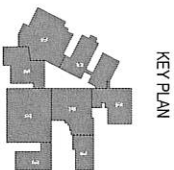
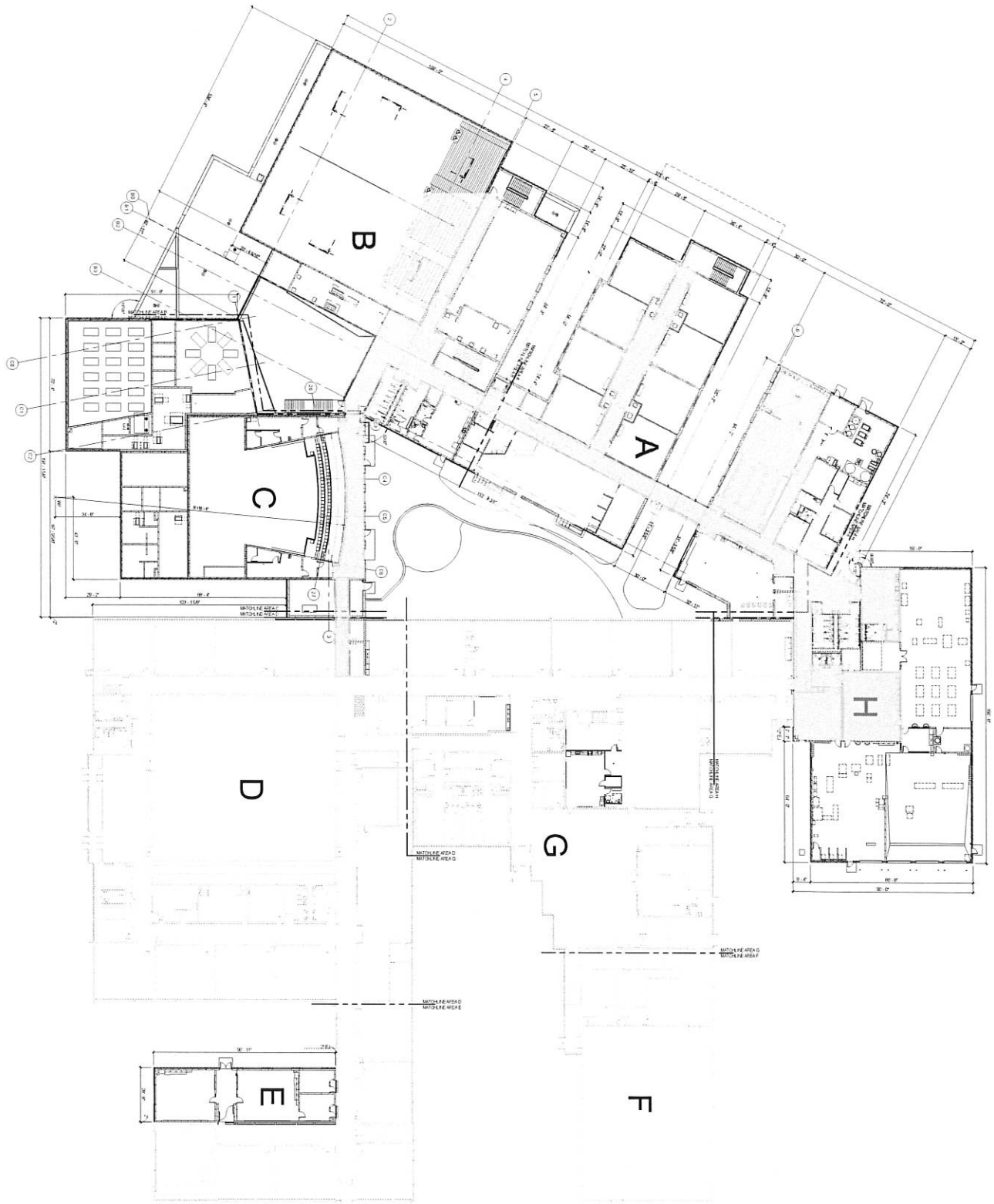
ORIENTATION PLAN - MAIN LEVEL



ALT #1B: LVT =



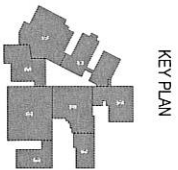
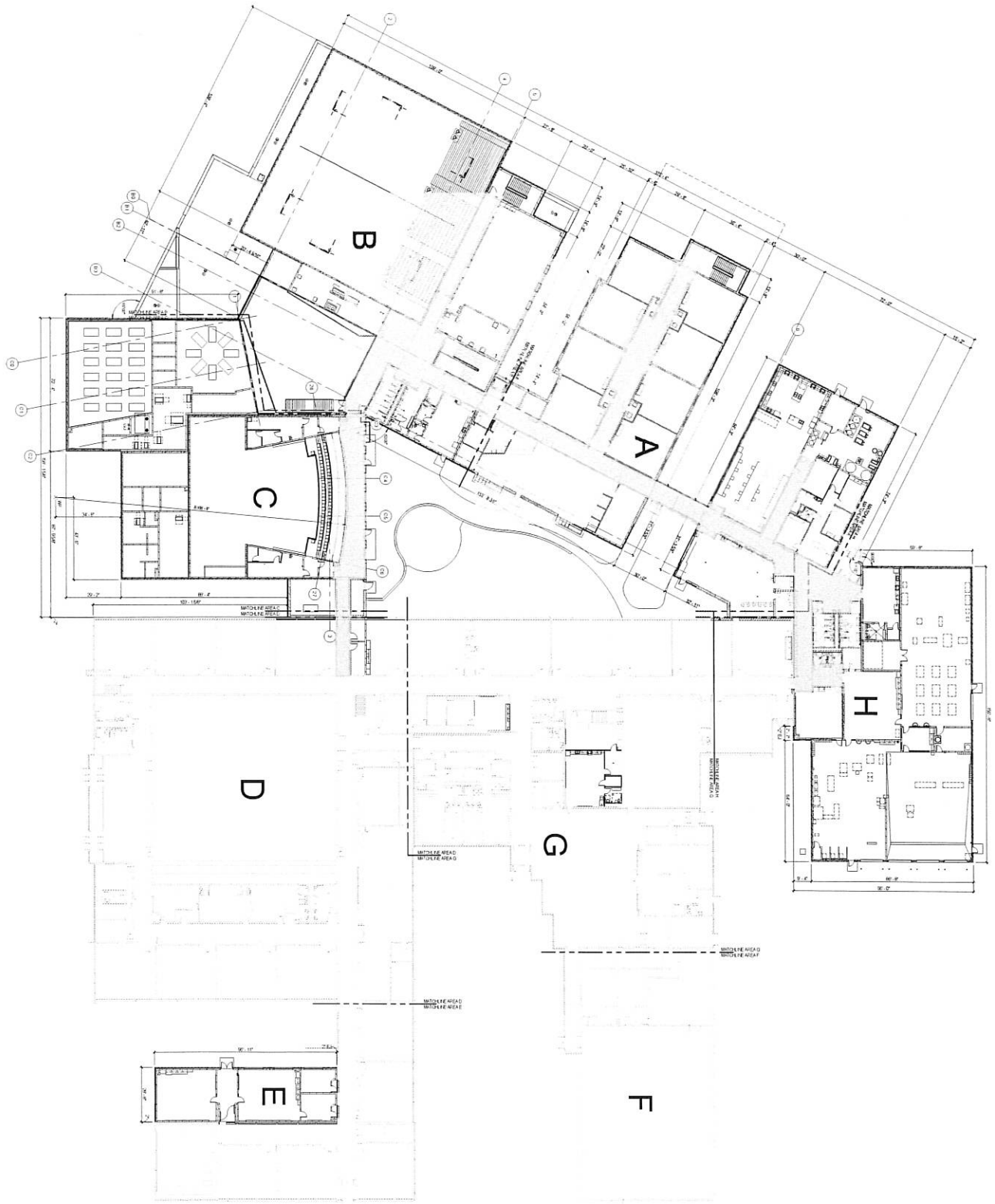
ORIENTATION PLAN - UPPER LEVEL



KEY PLAN



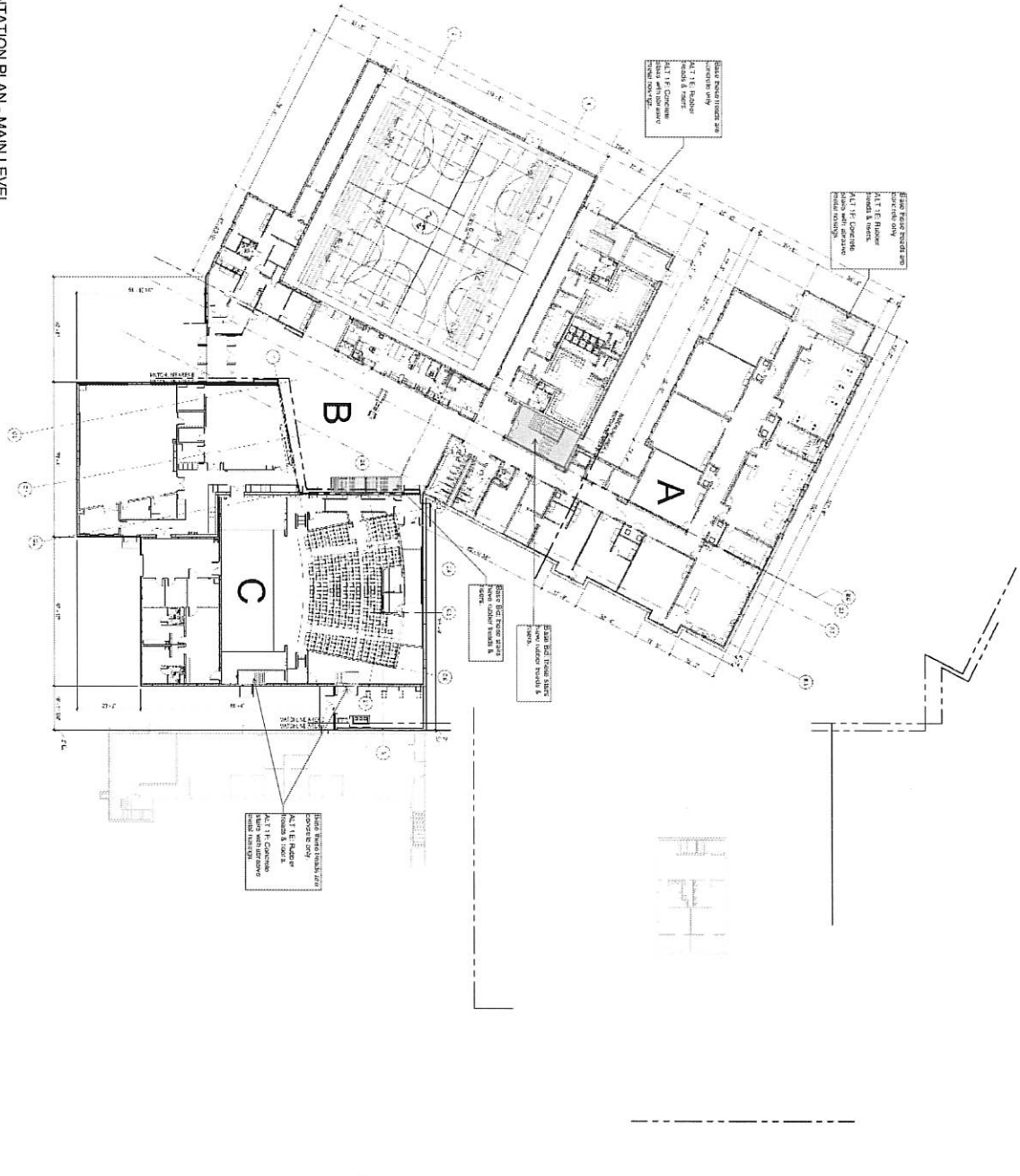
ORIENTATION PLAN - UPPER LEVEL



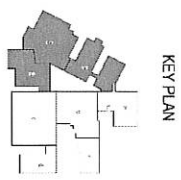
KEY PLAN

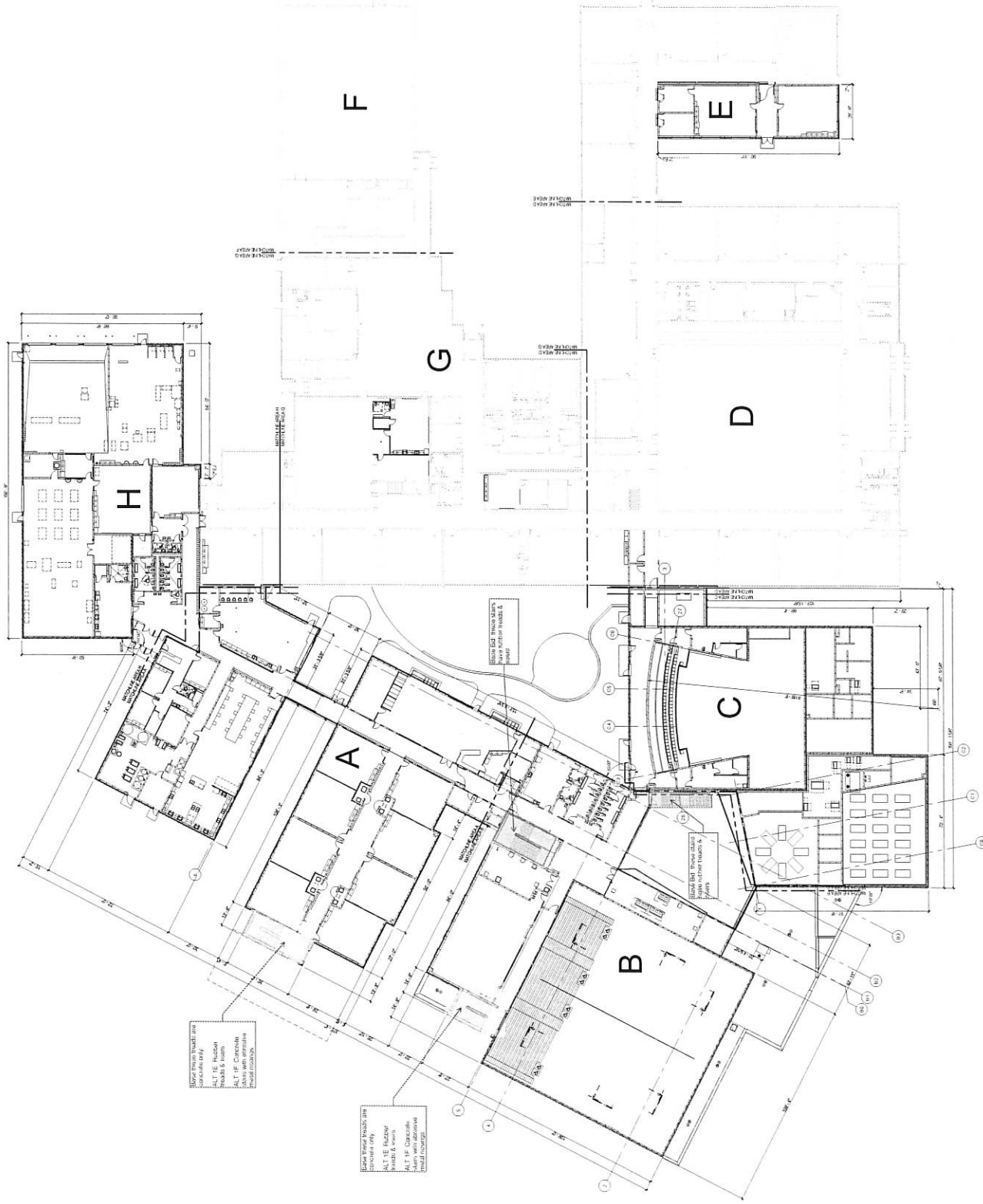
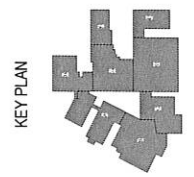


ORIENTATION PLAN - MAIN LEVEL



ALT #1E & F:





ORIENTATION PLAN - UPPER LEVEL
 SCALE: 1/8" = 1'-0"

