

SHAKOPEE PUBLIC SCHOOLS



SCHOOL BOARD AGENDA





October 14, 2019
6:00 PM

1. CALL TO ORDER SCHOOL BOARD WORK SESSION AND ROLL CALL - CHAIR BOWERMAN
2. PLEDGE OF ALLEGIANCE
3. CONSIDERATION OF AGENDA AS PRESENTED
4. INFORMATION
 4. 1. Community Facilities Task Force Update 5

School Board Vice Chair Judi Tomczik will share some observations from the CFTF visit to the Pearson building. An updated timeline for the recommends to the board will be reviewed.
Presenter: School Board Vice Chair Judi Tomczik
Time: 5 minutes
5. DISCUSSION
 5. 1. Exit Survey 6

Communications Supervisor Ashley McCray will share the development of a plan to collect information from resident families choosing to enroll student(s) elsewhere.
Presenter: Communications Supervisor Ashley McCray
Time: 20 minutes
 5. 2. UNESCO Energy Efficiency Project 17

Administration recommends approval of an Energy Efficiency Program. Program funds necessary improvements that are ineligible LTFM expenditures. The program self-funds and is budget neutral over the 15-year term of financing. Attached presentation provides scope of work, estimated costs and annual utility savings.
Presenter: Director of Finance & Operations Jeff Priess
Time: 20 minutes
6. DISCUSSION AND POSSIBLE ACTION
 6. 1. 2020-21 Middle School Attendance Areas 66

District administration will present draft scenarios for 2020-21 Middle School Attendance Areas.
Recommended Action
Accept the draft scenarios and direct district staff to proceed to collect public feedback.

Presenter: Assistant Superintendent Dave Orlowsky

Time: 31 minutes

7. ACTION

7. 1. Discussion and Selection of School Board Member Replacement Process 95
With the December 31, 2019 resignation of School Board Member Reggie Bowerman approaching, the School Board will discussion and select a replacement process along with a timeline.

Options following resignation of a School Board Member (each of the options would also result in a regular election in November 2020 to 'permanently' fill the seat):

*Leave seat vacant

*Fill seat by appointment

*Hold Special Election

Recommended Action

Select one of three replacement processes for the School Board Member vacancy as presented.

Presenter: Vice Chair Judi Tomczik and Superintendent Mike Redmond

Time: 10 minutes

8. OTHER

9. UPCOMING MEETINGS AND IMPORTANT DATES

October 14, 2019 5:00PM Policy Committee Meeting District Office Room 202

October 23, 2019 5:00PM Facilities Committee Meeting District Office Boardroom

October 28, 2019 5:00PM Finance Committee Meeting District Office Room 202

October 28, 2019 5:00PM Personnel Committee Meeting District Office Room 202

October 28, 2019 6:00PM School Board Business Meeting District Office Boardroom

October 29, 2019 6:00-7:00PM Middle School Attendance Areas Info & Input Session

Shakopee East Middle School - 1137 Marschall Road

(a quorum of the School Board may be present)

November 4, 2019 5:00PM Policy Committee Meeting District Office Room 202

November 7, 2019 6:00-7:00PM Middle School Attendance Areas Info & Input Session

Shakopee West Middle School - 200 10th Ave East

(a quorum of the School Board may be present)

November 18, 2019 5:00PM Finance Committee Meeting District Office Room 202

November 18, 2019 6:00PM School Board Business Meeting District Office Boardroom

November 20, 2019 5:00PM Facilities Committee Meeting District Office Boardroom

December 2, 2019 5:00PM Policy Committee Meeting District Office Supt Office

December 9, 2019 5:00PM Finance Committee Meeting District Office Room 202

December 9, 2019 6:00PM Truth in Taxation Hearing &

School Board Business Meeting District Office Boardroom

December 11, 2019 5:00PM Facilities Committee Meeting District Office Boardroom

December 16, 2019 5:00PM Personnel Committee Meeting District Office Boardroom

10. ADJOURN TO CLOSED SESSION

Pursuant to Minnesota Statute 13D.03, a school board may, by majority vote in a public meeting, decide to close a meeting to consider strategy for labor negotiations.

Recommended Action

Enter in to Closed Session as specified.

11. RETURN FROM CLOSED SESSION and WORK SESSION ADJOURNMENT



AGENDA

CFTF Meeting
Thursday, October 3, 2019
6:00 p.m. – 8:00 p.m.

1. Thoughts Since Last Meeting?
2. Pearson Information
 - a. History
 - b. Capacity Diagram
 - c. Functional Needs
3. Tour
 - a. Tour Download
4. Discussion: District Needs
 - a. What space needs are there to house our student population today?
 - High School Level
 - Middle School Level
 - Elementary Level
 - Early Childhood Level
 - District Support
 - b. What might be our space needs in the near-term future (0-5 years)?
 - c. Where might be our space needs in the long-term future (10+ years)?
 - d. Where does additional space exist in the District currently?
 - e. Does all of our space meet an acceptable standard?
5. Information Requests

Next Meeting (s): Tuesday, October 15, 2019, 6:00 p.m. – 8:00 p.m.
 Monday, November 4, 2019, 6:00 p.m. – 8:00 p.m.
 Tuesday, November 12, 2019, 6:00 p.m. – 8:00 p.m.

DISTRICT EXIT SURVEY

PRESENTER | COMMUNICATIONS SUPERVISOR ASHLEY MCCRAY



SHAKOPEE PUBLIC SCHOOLS EXIT SURVEY

Following discussions in Communications Committee and Community Facilities Task Force meetings, we will conduct a survey with families that live in the Shakopee school district, but have chosen to enroll their student(s) elsewhere.



SHAKOPEE PUBLIC SCHOOLS EXIT SURVEY

- Tonight
 - Discussion
 - Feedback
 - Direction



SHAKOPEE PUBLIC SCHOOLS EXIT SURVEY

- Information Available:
 - As of the 2019-20 school year
 - Names, addresses and/or emails
 - School currently attending and school attended in the 2018-19 school year (in some cases, but not all)
 - As of now, 1,317 households



SHAKOPEE PUBLIC SCHOOLS EXIT SURVEY

- Options:
 - Send email asking families to complete survey
 - Mail a letter asking families to complete online survey



SHAKOPEE PUBLIC SCHOOLS EXIT SURVEY

- The survey will be conducted via Survey Monkey
- Proposal: Annual survey for new names added to the list
- Proposal: Three open-ended questions
- Individual responses and personal information will remain confidential.



SHAKOPEE PUBLIC SCHOOLS EXIT SURVEY

Question 1:

What was the
primary reason
you decided to
leave Shakopee
Public Schools?



SHAKOPEE PUBLIC SCHOOLS EXIT SURVEY

Question 2:

Is there something Shakopee Public Schools could have done differently that would have impacted your decision-making in such a way that your child would be attending Shakopee Public Schools?



SHAKOPEE PUBLIC SCHOOLS EXIT SURVEY

Question 3:

The Shakopee school district is always seeking ways to serve our students and community better. Do you have any suggestions as to how we can improve our services?



SHAKOPEE PUBLIC SCHOOLS EXIT SURVEY

- Next Steps:
 - Continue discussion with School Board Communications Committee (10/23)
 - Finalize questions
 - Finalize survey date





QUESTIONS?



SUGGESTIONS?



Shakopee
Public Schools



Energy Efficiency Program

An Integral Component of the District's Facilities Maintenance Plan





Tonight...

■ Energy Efficiency Program

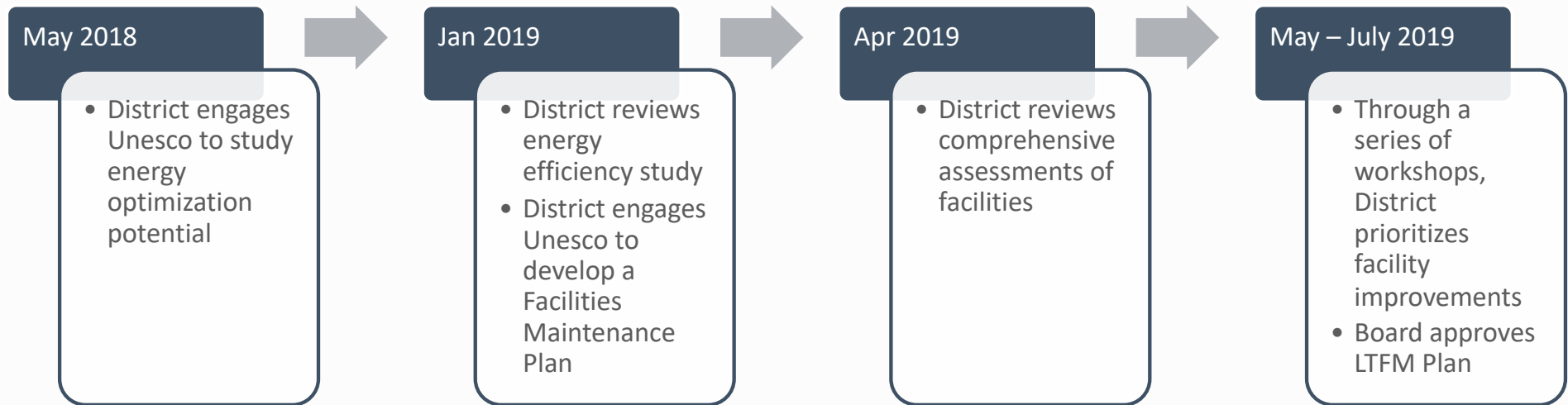
- What is it?
- How does it relate to the Districts' Facility Maintenance Plan?
- Scope of Work?
- How do we fund it?

■ Next Steps

- Authorize administration to complete energy efficiency program



Program Development





Priority Weighting →

Facility	Category	FIM Code	FIM Description	Cost	Prioritization										
					35%	10%	15%	15%	10%	5%	5%	5%	5%	100%	
					Current Condition	Interconnection with Other Systems	Educational Impact	Health, Safety, and Security	Student & Community	Return on Investment	Code Concern	Prevention of Water Intrusion	Weighted Prioritization		
Key for Prioritization															
Priority	Priority Characteristics														
5	Important and Urgent for the reasons specified. An organization top priority.														
1	Lower Importance and Urgency. Could be deferred into the future if resources don't allow for immediate implementation.														
Pearson Elementary	Ventilation / Dehumid Systems	PE-V.1b	Replace Fan Coil Units with Central AHUs and Dehumid	\$ 4,930,000	4.5	5	5	5	5	5	1	3	1	4.3	
Pearson Elementary	Ventilation / Dehumid Systems	PE-V.2	Replace 1994 AHU's with New AHU's and Dehumid	\$ 3,120,000	3.75	5	5	5	5	5	1	3	1	4.1	
Pearson Elementary	Ventilation / Dehumid Systems	PE-V.1a	Replace Fan Coil Units with Vertical Unit Ventilators & Dehumid	\$ 788,000	4.5	3	3	5	3	1	3	1	3.6		
Pearson Elementary	Mechanical Systems	PE-M.3	Heating Distribution System Replacement	\$ 622,000	3.75	5	4	1	5	1	1	1	3.2		
Pearson Elementary	Life Safety Systems	PE-LS.1	New Fire Alarm System	\$ 215,000	4.5	3	1	5	1	1	4	1	3.2		
Pearson Elementary	Electrical Systems	PE-E.3b	Upgrade 1970 Electrical Distribution System	\$ 356,000	3.75	5	4	1	4	1	2	1	3.2		
Pearson Elementary	Exterior Envelope Including Roofing	PE-EXT.2	1970's Window Replacement	\$ 74,000	4.5	2.5	3	1	5	1	1	2	3.1		
Pearson Elementary	Grounds, Site, & Surroundings	PE-G.1	Playground Equipment	\$ 167,000	3.75	1	1	5	5	1	2	1	3.0		
Pearson Elementary	Plumbing Systems	PE-P.1	Replace Hand Washing Stations	\$ 5,300	3.75	2	1	4	5	1	1	1	2.9		
Pearson Elementary	Exterior Envelope Including Roofing	PE-EXT.4.5	Roofing Sections D & K 1983 Modified Bitumen Roof Replacement	\$ 272,000	4.5	2	2	1	3	1	1	5	2.9		
Pearson Elementary	Exterior Envelope Including Roofing	PE-EXT.4.4	Roofing Sections I & J 1983 Modified Bitumen Roof Replacement	\$ 232,000	4.5	2	2	1	3	1	1	5	2.9		
Pearson Elementary	Exterior Envelope Including Roofing	PE-EXT.4.3	Roofing Section H 1983 Modified Bitumen Roof Replacement	\$ 101,000	4.5	2	2	1	3	1	1	5	2.9		
Pearson Elementary	Exterior Envelope Including Roofing	PE-EXT.4.6	Roofing Sections L & M 1983 Modified Bitumen Roof Replacement	\$ 72,000	4.5	2	2	1	3	1	1	5	2.9		
Pearson Elementary	Exterior Envelope Including Roofing	PE-EXT.4.1	Roofing Sections E & G 1983 Modified Bitumen Roof Replacement	\$ 62,500	4.5	2	2	1	3	1	1	5	2.9		
Pearson Elementary	Exterior Envelope Including Roofing	PE-EXT.4.7	Roofing Section N 1983 Modified Bitumen Roof Replacement	\$ 8,700	4.5	2	2	1	3	1	1	5	2.9		
Pearson Elementary	Exterior Envelope Including Roofing	PE-EXT.4.2	Roofing Section F 1983 Modified Bitumen Roof Replacement	\$ 5,600	4.5	2	2	1	3	1	1	5	2.9		
Pearson Elementary	Electrical Systems	PE-E.2	Upgrade 1970 Main Electrical Service and Switchgear	\$ 363,000	4.5	3	2	1	1	1	2.5	1	2.7		
Pearson Elementary	Electrical Systems	PE-E.1b	Lighting Retrofit to LED with Occupancy Controls	\$ 147,300	3.75	1	3	1	3	4.5	1	1	2.6		
Pearson Elementary	Electrical Systems	PE-E.1a	Lighting Retrofit with New LED Technology	\$ 126,400	3.75	1	3	1	3	4.5	1	1	2.6		
Pearson Elementary	Interior Spaces and Finishes	PE-INT.1	Carpet (1994) Replacement	\$ 445,000	4.5	1	1	1	5	1	1	1	2.6		
Pearson Elementary	Mechanical Systems	PE-M.2	Fuel Oil Tank Replacement	\$ 92,500	3.75	3	1	1	2	1	5	1	2.5		
Pearson Elementary	Exterior Envelope Including Roofing	PE-EXT.1	New Exterior Doors	\$ 18,500	3.75	1	1	1	5	1	1	2	2.4		
Pearson Elementary	Plumbing Systems	PE-P.2	Domestic Water Piping Replacement 1970	\$ 260,000	3.75	5	1	1	1	1	1	1	2.4		
Pearson Elementary	Interior Spaces and Finishes	PE-INT.2	Restroom Partition Replacement	\$ 57,000	3.75	1	1	1	5	1	1	1	2.4		
Pearson Elementary	Interior Spaces and Finishes	PE-INT.3	Ceiling Tile Replacement	\$ 13,250	3.75	1	1	1	5	1	1	1	2.4		
Pearson Elementary	Mechanical Systems	PE-M.1	Boiler Plant Replacement - Hot Water Boilers	\$ 591,000	4.5	2	1	1	1	1	1	1	2.3		
Pearson Elementary	Exterior Envelope Including Roofing	PE-EXT.3	Boiler Stack Tuckpointing	\$ 17,250	3.75	1	1	1	3	1	1	3	2.3		
Pearson Elementary	Controls and Energy Management	PE-C.1b	Energy Management and DDC - Data Analytics	\$ 71,900	3	2	2	1	1	5	1	1	2.2		
Pearson Elementary	Controls and Energy Management	PE-C.1a	Energy Management and DDC - Recommission	\$ 45,600	3	2	2	1	1	5	1	1	2.2		
Pearson Elementary	Electrical Systems	PE-E.3a	Replace Outdated Electrical Distribution Panels	\$ 178,000	3.75	2	1.5	1	1	1	1	1	2.1		
Pearson Elementary	Capital Equipment & Assets	PE-EQUIP.1	Replace Student Lockers	\$ 78,000	3	1	1	1	5	1	1	1	2.1		
Pearson Elementary	Utility Services	PE-U.1	Solar Photovoltaic System	\$ 785,000	1	1	1.5	1	2	3	1	1	1.3		
Pearson Elementary	Controls and Energy Management	PE-C.3	Occupancy Control of VAV Boxes	\$ 28,300	1	1	1	1	1	5	1	1	1.2		



Summary of Needs by Priority

School Name	Priority					Total
	0 to 1	1.1 to 2	2.1 to 3	3.1 to 4	4.1 to 5	
Shakopee Senior High	\$ -	\$ 43,250	\$ 154,000	\$ -	\$ -	\$ 197,250
East Middle School	\$ -	\$ 133,500	\$ 6,776,200	\$ 7,051,000	\$ 4,830,000	\$ 18,790,700
West Middle School	\$ -	\$ 307,700	\$ 8,428,025	\$ 7,773,700	\$ 11,040,000	\$ 27,549,425
Eagle Creek Elementary	\$ -	\$ 14,250	\$ 755,050	\$ 27,000	\$ -	\$ 796,300
Jackson Elementary	\$ -	\$ 884,000	\$ 683,050	\$ -	\$ -	\$ 1,567,050
Pearson Elementary	\$ -	\$ -	\$ 3,039,600	\$ 2,055,000	\$ 8,050,000	\$ 13,144,600
Red Oak Elementary	\$ -	\$ 6,800	\$ 1,853,750	\$ -	\$ -	\$ 1,860,550
Sun Path Elementary	\$ -	\$ -	\$ 778,200	\$ -	\$ -	\$ 778,200
Sweeney Elementary	\$ -	\$ -	\$ 2,076,650	\$ 1,653,000	\$ 2,597,000	\$ 6,326,650
Central Family Center	\$ -	\$ -	\$ 4,125,100	\$ 2,824,000	\$ 3,800,000	\$ 10,749,100
District Offices	\$ -	\$ -	\$ -	\$ -	\$ -	\$ -

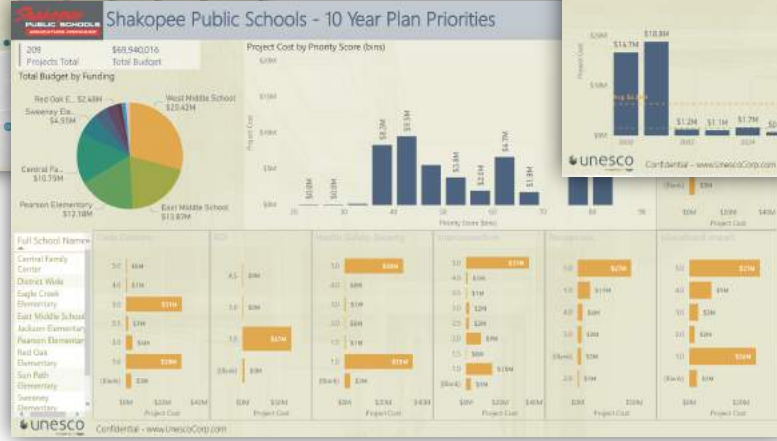
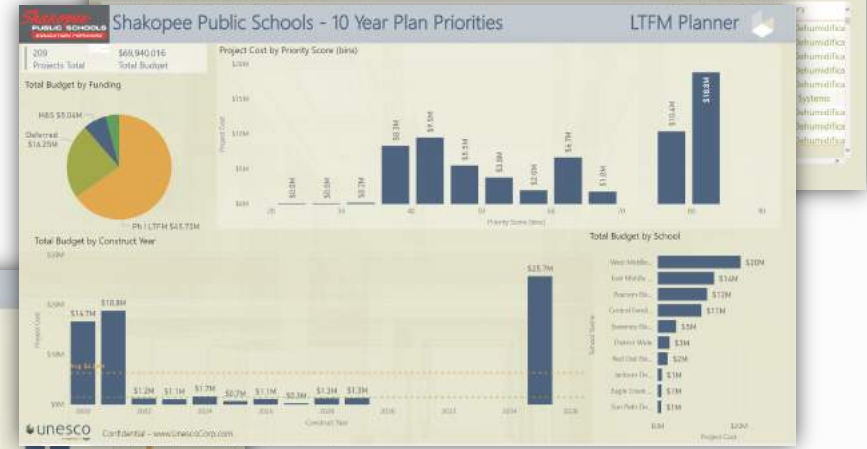
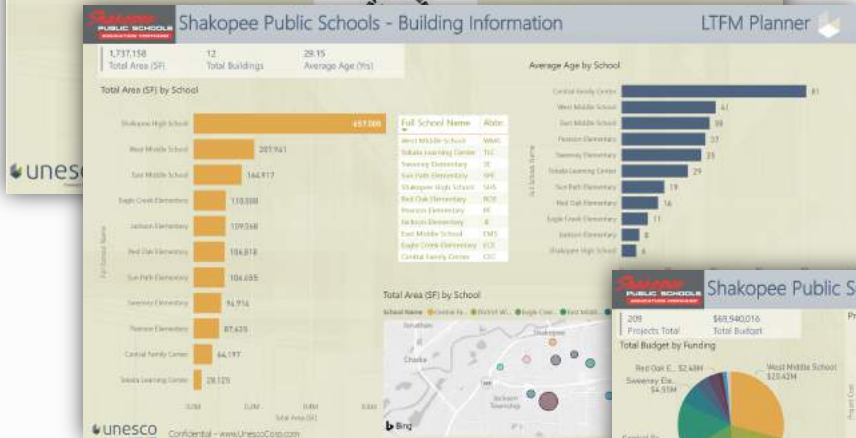
Key for Prioritization	
Priority	Priority Characteristics
5	Important and Urgent for the reasons specified. An organization top priority.
1	Lower Importance and Urgency. Could be deferred into the future if resources don't allow for immediate implementation.



Shakopee's Facility Maintenance Plan



Annual Summary by School	2020	2021	2022	2023	2024	2025	2026	2027	2028	2029	2035	Total	
Central Family Center												\$10,745,100	\$10,745,100
District Wide	\$291,300	\$291,300	\$291,300	\$291,300	\$291,300	\$291,300	\$291,300	\$291,300	\$291,300	\$291,300	\$291,300	\$2,913,000	\$2,913,000
Eagle Creek Elementary	\$29,550		\$94,264	\$772,136				\$19,766				\$1,106,716	\$1,106,716
East Middle School	\$11,783,200							\$18,144	\$794,524			\$1,300,000	\$13,885,868
Jackson Elementary								\$21,508		\$985,463		\$1,006,971	\$1,006,971
Pearson Elementary												\$12,176,000	\$12,176,000
Red Oak Elementary	\$34,250				\$1,400,871		\$8,113			\$1,034,736		\$2,478,970	\$2,478,970
Sun Path Elementary												\$857,866	\$857,866
Sweeney Elementary	\$4,150,000											\$4,150,000	\$4,150,000
West Middle School		\$18,520,133										\$18,520,133	\$18,520,133
Total	\$16,888,950	\$18,811,433	\$1,243,530	\$1,043,436	\$1,492,171	\$701,156	\$1,105,541	\$291,300	\$1,276,783	\$1,326,036	\$25,737,700	\$69,940,616	





Shakopee Schools' Energy Efficiency Program



Energy Efficiency Program

Integral Component of Facilities Maintenance Initiative

- Funding mechanism for non-eligible (but necessary) LTFM improvements (e.g. lighting upgrades, recommissioning)

Scope of Work

- Energy efficiency improvements

Self-Funding

- Utility and operating efficiency fund the project
- Budget neutral over the 15-year term of financing

Reduces Burden on LTFM Resources

- Energy program will fund approximately \$1.7 million of LTFM improvements

Reduces Operating and Maintenance Expense

- Redirect valuable general fund resources back into education



Energy Efficiency Program

Integral Component of Facilities Maintenance Initiative

- Funding mechanism for non-eligible (but necessary) LTFM improvements (e.g. lighting upgrades, recommissioning)

Scope of Work

- Energy efficiency improvements

Self-Funding

- Utility and operating efficiency fund the project
- Budget neutral over the 15-year term of financing

Reduces Burden on LTFM Resources

- Energy program will fund approximately \$1.7 million of LTFM improvements

Reduces Operating and Maintenance Expense

- Redirect valuable general fund resources back into education

Description	MN Statute	Use of Funds	Does this generate new dollars to District budget	Does this require Voter Approval	What kind of borrowing?	Will there be a new tax impact associated with levy	Who pays for the levy and which tax base is utilized	Max Term
Energy Efficiency Project	123B.65	Multiple Uses	No	No	Several options	No	Not Applicable	15 years
Referendum Revenue / Operating Levy Revenue	126C.17	Day-to-day operations	Yes	Yes	Typically, none	Yes	House, garage, and one acre; RMV	10 Years
School Building Bonds	475 & 123B.02	Capital Expenditures	Yes	Yes	General Obligation	Yes	All taxable property; NTC	30 years or useful life
Capital Projects Levy	123B.63	Capital expenditures defined in 126C.10 subd. 14	Yes	Yes	Certificates of Participation	Yes	All taxable property; NTC	10 Years
Capital Facilities Bonds	123B.62	Capital expenditures defined in 126C.62	No	No	General Obligation	No	All taxable property; NTC	15 years or useful life
Capital Equipment Notes	123B.61	Capital expenditures defined in 126C.61	No	No	General Obligation	No	All taxable property; NTC	10 years or useful life
Long-Term Facility Maintenance Levy	123B.595	Deferred capital expenditures & Health and Safety projects	Yes	No	General Obligation	Yes	All taxable property; NTC	30 years or useful life
Lease Levy / Capital Levies	126C.40	Capital expenditures defined in 126C.40	Yes	No	Certificates of Participation	Yes	All taxable property; NTC	30 years or useful life
Abatement Bond	469.1812 to 469.1815	School Parking Lot Improvements	Yes	No	General Obligation	Yes	All taxable property; NTC	15 years or useful life

Description	MN Statute	Use of Funds	Does this generate new dollars to District budget	Does this require Voter Approval	What kind of borrowing?	Will there be a new tax impact associated with levy	Who pays for the levy and which tax base is utilized	Max Term
Energy Efficiency Project	123B.65	Multiple Uses	No	No	Several options	No	Not Applicable	15 years
Referendum Revenue / Operating Levy Revenue	126C.17	Day-to-day operations	Yes	Yes	Typically, none	Yes	House, garage, and one acre; RMV	10 Years
School Building Bonds	475 & 123B.02	Capital Expenditures	Yes	Yes	General Obligation	Yes	All taxable property; NTC	30 years or useful life
Capital Projects Levy	123B.63	Capital expenditures defined in 126C.10 subd. 14	Yes	Yes	Certificates of Participation	Yes	All taxable property; NTC	10 Years
Capital Facilities Bonds	123B.62	Capital expenditures defined in 126C.62	No	No	General Obligation	No	All taxable property; NTC	15 years or useful life
Capital Equipment Notes	123B.61	Capital expenditures defined in 126C.61	No	No	General Obligation	No	All taxable property; NTC	10 years or useful life
Long-Term Facility Maintenance Levy	123B.595	Deferred capital expenditures & Health and Safety projects	Yes	No	General Obligation	Yes	All taxable property; NTC	30 years or useful life
Lease Levy / Capital Levies	126C.40	Capital expenditures defined in 126C.40	Yes	No	Certificates of Participation	Yes	All taxable property; NTC	30 years or useful life
Abatement Bond	469.1812 to 469.1815	School Parking Lot Improvements	Yes	No	General Obligation	Yes	All taxable property; NTC	15 years or useful life



LTFM Revenue

LTFM – Regular Revenue

- Board approval
- \$380 per adjusted pupil units; Roughly \$2.7 million in FY 2019
- 15 categories of eligible expenses

LTFM – Large Projects

- Board approval
- Additional levy authority for projects over \$100,000
- Hazardous materials, life safety, indoor air quality



LTFM Revenue

Finance Codes - Small Health and Safety

347-A	Physical Hazards
349-A	Other Hazardous Materials
352-A	Environmental H&S Mgmt
358-A	Asbestos Removal and Encapsulation
363-A	Fire Safety
366-A	Indoor Air Quality

Finance Codes - Health and Safety, Projects Costing > \$100,000

358-B	Asbestos Removal and Encapsulation
363-B	Fire Safety
366-B	Indoor Air Quality

Finance Codes - Accessibility

367	Accessibility
-----	---------------

Finance Codes - Deferred Maintenance Projects

368	Building Envelope
369	Building Hardware and Equip
370	Electrical
379	Interior Surfaces
380	Mechanical Systems
381	Plumbing
382	Professional Services and Salary
383	Roof Systems
384	Site Projects

LTFM – Regular Revenue

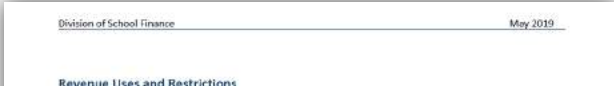
- Board approval
- \$380 per adjusted pupil units; Roughly \$2.7 million in FY 2019
- 15 categories of eligible expenses

LTFM – Large Projects

- Board approval
- Additional levy authority for projects over \$100,000
- Hazardous materials, life safety, indoor air quality



LTFM Revenue



Finance Codes - Small Health and Safety	
347-A	Physical Hazards
349-A	Other Hazardous Materials
352-A	Environmental H&S Mgmt
358-A	Asbestos Removal and Encapsulation
363-A	Fire Safety

LTFM Revenue Restrictions (Minn. Stat. § 123B.595, subd. 11)

LTFM funds may **not** be used:

- For construction of new facilities, remodeling of existing facilities or the purchase of portable classrooms.
- To finance a lease purchase agreement, installment purchase agreement or other deferred payments agreement.
- For energy-efficiency projects under Minnesota Statutes, section 123B.65, for a building or property or part of a building or property used for postsecondary instruction or administration or for a purpose unrelated to elementary and secondary education.
- For violence prevention and facility security, ergonomics or emergency communication devices.

- [School Board Resolutions](#)
- [Other LTFM Documents and Resources](#)
- [FY 2015 LTFM Closeout/Expenditure Reconciliation](#)
- [Mid-Year/Two-Year Plan Revisions](#)
- [LEAFS Code Terminology](#)
- [MCK Contacts for Further Information](#)

Long-Term Facilities Maintenance (LTFM) – 2019 Guide Page 1





LTFM Allowable Expenditures



Long-Term Facilities Maintenance Revenue Guide for Allowable Expenditures

Minnesota Statutes, section 123B.595

Minnesota Department of Education
Division of School Finance
1500 Highway 36 West
Roseville, MN 55113-4266
651-582-8605

June 24, 2016

(2) increasing accessibility of school facilities

(3) health and safety capital projects under section 123B.57; or

(4) by board resolution, to transfer money from the general fund reserve for long-term facilities maintenance to the debt redemption fund to pay the amounts needed to meet, when due, principal and interest on general obligation bonds issued under Minnesota Statutes, section 123B.595, Subdivision 5.

(b) A charter school may use revenue under this section for any purpose related to the school.

Note: School districts with an approved voluntary pre-kindergarten program under section 124D.151 are eligible to increase LTFM revenue for the cost approved by the commissioner for remodeling existing instructional space to accommodate pre-kindergarten instruction.

C. Deferred Maintenance Qualifying Criteria

1. **Qualifying Capital Expenditures and Maintenance projects.** Eligible projects are "...deferred capital expenditures and maintenance projects necessary to prevent further erosion of facilities..." This means that there are two categories of qualifying projects: Capital expenditures and maintenance projects. Broadly speaking, the meaning of "eligible projects" is work performed on an existing district-owned facility, for example: roof removal and replacement; tuck-pointing; flooring removal and replacement; asbestos abatement and replacement; mechanical ventilation replacement; plumbing removal and replacement, etc., is deferred according to the definition in C(2), and is necessary to prevent further erosion of facilities as defined in paragraph C(2), C(3) and C(4).

ed as projects that exceed \$10,000. Capital expenditures
th C(14) may be included in the ten-year plan.

ified items of \$10,000 or less. Merriam Webster
a verb: to keep in an existing state (as of repair,
from failure or decline <maintain machinery>. Minnesota
udge makes eligible deferred capital expenditures and
y to prevent further erosion of facilities.

id deferred when it has been postponed beyond the time
nd prudent work scheduling practices, would accomplish
cheduled to occur after a specific building component is
of is replaced 20 years after installation and its life
deferred work also includes component(s) that the district
tion for funding under the program has definite, specific
for repair, its scope and its cost.

physical erosion in effect restoring the component to as
rtions of projects relating to additional or competing
i) shall not be funded. These include portions of projects
icipated benefit. The exception will be for portions of
ndary benefits. For example, if pneumatic mechanical
to the point where it must be replaced but is no longer

escence—Facilities which function well but which do not
eligible for funding. For example, swimming pool depth

-The use for the area and activities conducted in the area
3 after the work. Thus, a science lab before would remain
a science lab.

6. **There is no expansion or realignment of function**—Any change in the number of students served or changes in the facility to accommodate the number of students served must not be funded with long-term facilities maintenance revenue. Thus, a classroom designed for 20 students would not expand to 30, or vice versa. Also, there is no increase of space and there is no new construction. The project cannot modify the facility's functionality or capacity, but shall restore or replace to prevent further deterioration of the facility.
7. **Planned or scheduled maintenance projects are ineligible**—For example, routine replacement of fittings, traps, filters, belts, moving components or repairs of a planned or preventative nature are excluded.
8. **Technology is excluded from eligibility**, as it is considered to be equipment and not part of a facility. Repair or replacement of telecommunications and computer installations and connectivity are excluded, except for repair/replacement of facility automation computer installations or telecommunications wiring as a result of erosion, deterioration or mechanical breakdown as the primary purpose for the work. Electrical service and lighting, clocks and

objectives (worthy as they might be) shall not be funded. These include portions of projects that have an energy or financial anticipated benefit. The exception will be for portions of projects that provide these as secondary benefits. For example, if pneumatic mechanical ventilation control logic has eroded to the point where it must be replaced but is no longer available.

4. **Erosion is not the same as obsolescence**—Facilities which function well but which do not meet service requirements are not eligible for funding. For example, swimming pool depth correction is not an eligible project.
5. **The purpose remains the same**—The use for the area and activities conducted in the area are essentially the same before and after the work. Thus, a science lab before would remain a science lab.
6. **There is no expansion or realignment of function**—Any change in the number of students served or changes in the facility to accommodate the number of students served must not be funded with long-term facilities maintenance revenue. Thus, a classroom designed for 20 students would not expand to 30, or vice versa. Also, there is no increase of space and there is no new construction. The project cannot modify the facility's functionality or capacity, but shall restore or replace to prevent further deterioration of the facility.
7. **Planned or scheduled maintenance projects are ineligible**—For example, routine replacement of fittings, traps, filters, belts, moving components or repairs of a planned or preventative nature are excluded.
8. **Technology is excluded from eligibility**, as it is considered to be equipment and not part of a facility. Repair or replacement of telecommunications and computer installations and connectivity are excluded, except for repair/replacement of facility automation computer installations or telecommunications wiring as a result of erosion, deterioration or mechanical breakdown as the primary purpose for the work. Electrical service and lighting, clocks and



Plan Items Not Eligible for LTFM Funding

Shakopee Senior High	East Middle School	West Middle School	Eagle Creek Elementary	Jackson Elementary	Pearson Elementary	Red Oak Elementary	Sun Path Elementary	Sweeney Elementary
<ul style="list-style-type: none">•Energy Management and DDC - Data Analytics•Occupancy Control of VAV Boxes•Replace VAV Box Controllers•Lighting Retrofit to LED with Occupancy Controls•Variable Speed Drives/Ventilation Control	<ul style="list-style-type: none">•Energy Management and DDC - Data Analytics•Occupancy Control of VAV Boxes•Lighting Retrofit to LED with Occupancy Controls•Automatic Pool Cover	<ul style="list-style-type: none">•Energy Management and DDC - Data Analytics•Occupancy Control of VAV Boxes•Lighting Retrofit to LED with Occupancy Controls•Variable Speed Drives/Ventilation Control•Destratification Fans•Automatic Pool Cover	<ul style="list-style-type: none">•Energy Management and DDC - Data Analytics•Occupancy Control of VAV Boxes•Lighting Retrofit to LED with Occupancy Controls•Variable Speed Drives/Ventilation Control	<ul style="list-style-type: none">•Energy Management and DDC - Data Analytics•Occupancy Control of VAV Boxes•Lighting Retrofit to LED with Occupancy Controls•Lighting Control System Replacement	<ul style="list-style-type: none">•Energy Management and DDC - Data Analytics•Occupancy Control of VAV Boxes•Lighting Retrofit to LED with Occupancy Controls	<ul style="list-style-type: none">•Energy Management and DDC - Data Analytics•Occupancy Control of VAV Boxes•Lighting Retrofit to LED with Occupancy Controls•Variable Speed Drives/Ventilation Control•Variable Speed Drives/Pumps	<ul style="list-style-type: none">•Energy Management and DDC - Data Analytics•Occupancy Control of VAV Boxes•Lighting Retrofit to LED with Occupancy Controls	<ul style="list-style-type: none">•Energy Management and DDC - Data Analytics•Occupancy Control of VAV Boxes•Lighting Retrofit to LED with Occupancy Controls



Energy Efficiency Program

Integral Component of Facilities Maintenance Initiative

- Funding mechanism for non-eligible (but necessary) LTFM improvements (e.g. lighting upgrades)

Scope of Work

- Energy efficiency improvements

Self-Funding

- Utility and operating efficiency fund the project
- Budget neutral over the 15-year term of financing

Reduces Burden on LTFM Resources

- Energy program will fund approximately \$1.7 million of LTFM improvements

Reduces Operating and Maintenance Expense

- Redirect valuable general fund resources back into education

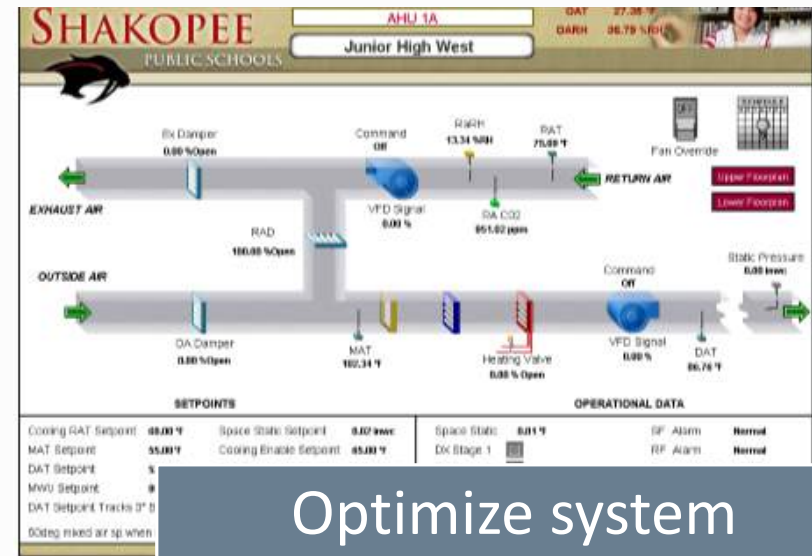


Energy Management Systems

Re-Commission Existing DDC System



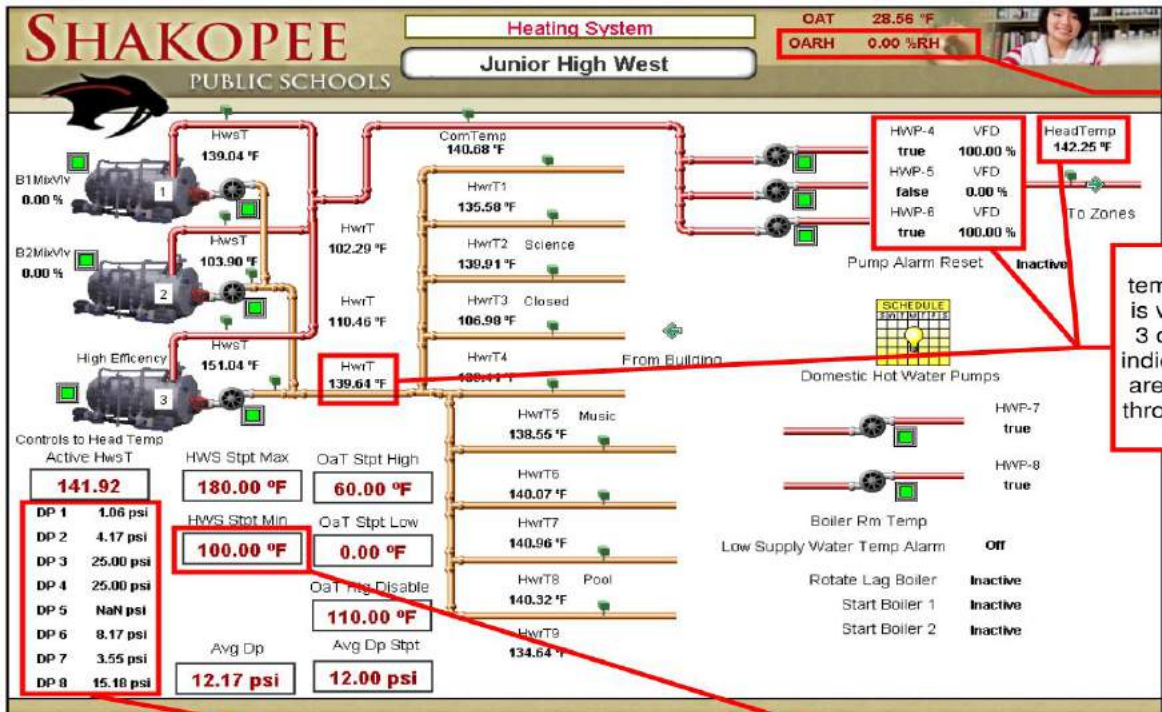
Recommission system sensors and actuators



Optimize system performance



Energy Management Systems



OA humidity sensor is not functioning and should be recommissioned.

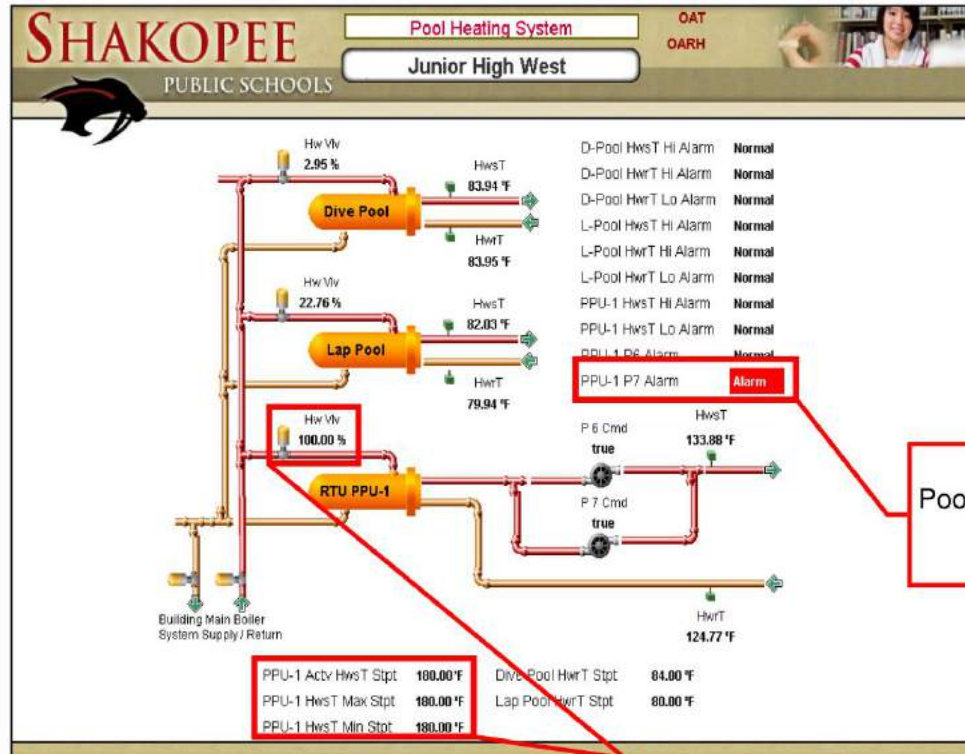
The HW system temperature differential is very low at less than 3 degrees. This likely indicates that the pumps are moving more water through the system than necessary.

The differential pressure sensors appear to have recommissioning needs and may also indicate balancing issues. The sensors reading 25.00 psi and NaN do not appear to be functioning. The difference between the highest and lowest DP readings suggests a need for balancing.

The minimum HW setpoint of 100 degrees is likely lower than what some of the older heating equipment in the facility was intended to operate at.



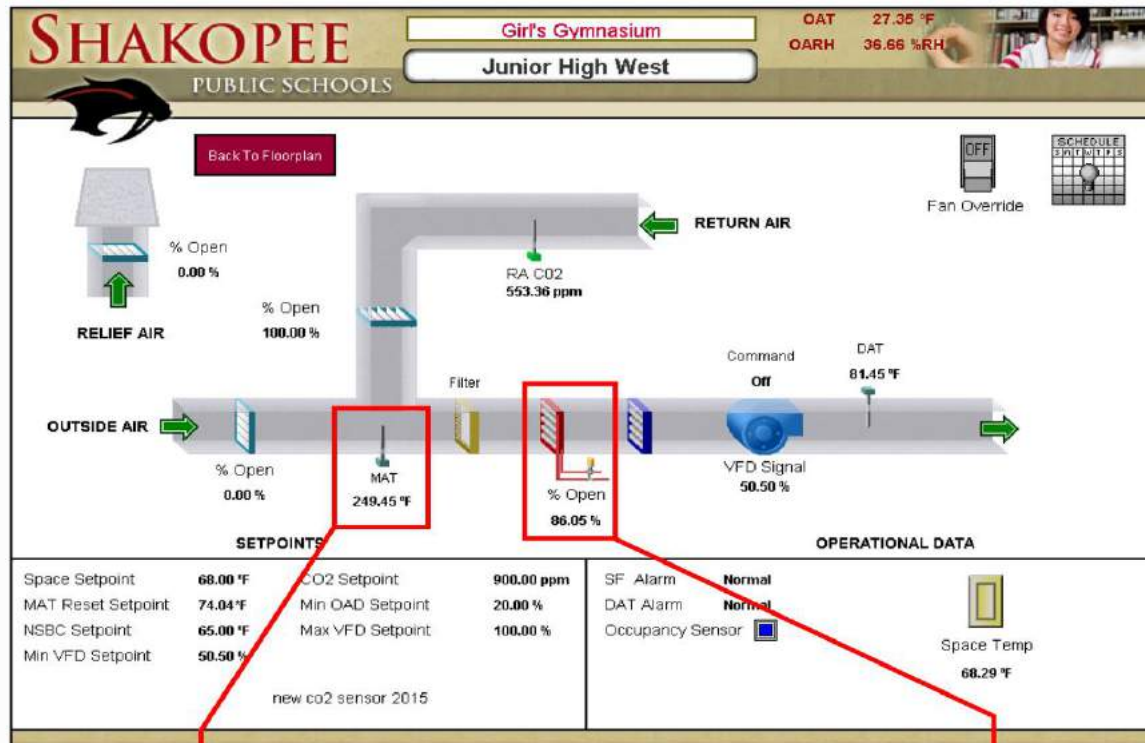
Energy Management Systems



The pool RTU HXER min and max setpoints are both 180 degrees preventing HW temperature reset. Valve is 100% open trying to maintain an unattainable setpoint.



Energy Management Systems



MAT sensor reading is false and should be recommissioned.

Heating valve is 86% open while the system is off. This is a common issue on all air handling systems and wastes heat as well as pumping energy.



Energy Management Systems

SHAKOPEE PUBLIC SCHOOLS

Radiational Heat OAT 28.56 °F OARH 35.00 %RH

Junior High West

AREA SERVED	SPACE	SETPOINT	Vlv Open
Room 101A	69.28 °F	69.00 °F	0.00 %
Room 101B	68.96 °F	69.00 °F	0.00 %
Room 101C	70.70 °F	69.00 °F	0.00 %
Room 102A	69.13 °F	69.00 °F	25.91 %
Admin RestRoom	67.54 °F	70.00 °F	100.00 %
Admin Conf Rm West	69.55 °F	70.00 °F	93.92 %
Admin Hallway West	68.25 °F	70.00 °F	100.00 %
Nurse Office	70.37 °F	70.00 °F	25.45 %
Nurse Lounge	70.20 °F	70.00 °F	19.62 %
Admin Back Office	70.02 °F	70.00 °F	10.94 %
Admin Reception	69.97 °F	70.00 °F	0.00 %
Room 129	69.37 °F	69.00 °F	20.26 %
Admin Chemical Health	68.43 °F	69.00 °F	30.28 %
Admin Conf Rm East	70.06 °F	69.00 °F	15.61 %
Vault	69.31 °F	69.00 °F	5.04 %
Admin Break Room	83.68 °F	69.00 °F	0.00 %
Admin Hallway East	69.84 °F	69.00 °F	0.00 %
Concessions Front Area	75.32 °F	90.00 °F	100.00 %
Concessions Rear Area	75.50 °F	90.00 °F	100.00 %
Concessions Storage	74.57 °F	90.00 °F	0.00 %
Arts Corridor West	65.37 °F	90.00 °F	100.00 %

AREA SERVED	SPACE	SETPOINT	Vlv Open
Dressing Room A	69.80 °F	70.00 °F	39.54 %
Dressing Room B	70.14 °F	70.00 °F	27.53 %
Dressing Area RR	68.31 °F	70.00 °F	100.00 %
Backstage Area West	65.73 °F	69.00 °F	0.00 %
Upper Corridor FTR	71.73 °F	69.00 °F	0.00 %
Room 231 Corridor	69.10 °F	69.00 °F	8.97 %
Room 231 Office	67.47 °F	69.00 °F	100.00 %
Room 231 Locker Area	NaN °F	69.00 °F	0.00 %
Room 231 Storage Area	68.95 °F	69.00 °F	12.16 %
Room 233 FTR	69.01 °F	69.00 °F	27.12 %
Room 230 Corridor	69.99 °F	69.00 °F	0.00 %
Room 230 Office	70.79 °F	69.00 °F	0.00 %
Room 230 Storage	68.82 °F	69.00 °F	22.34 %
Room 230 FTR	70.43 °F	70.00 °F	12.27 %
Room 230 Custodial	69.97 °F	69.00 °F	35.50 %
Room 122A	67.52 °F	69.00 °F	100.00 %
Room 122B	68.34 °F	69.00 °F	100.00 %
Dark Room	70.90 °F	90.00 °F	100.00 %
Room 125 Kiln Storage	68.70 °F	90.00 °F	100.00 %
Custodial RestRoom	72.36 °F	90.00 °F	100.00 %
Cafeteria FTR	73.84 °F	90.00 °F	100.00 %

Space is over 3 degrees below setpoint and valve is 0% open.

Space sensor not functioning or controller is offline

Areas with excessive 90 degree temperature setpoints indicate recommissioning needs.



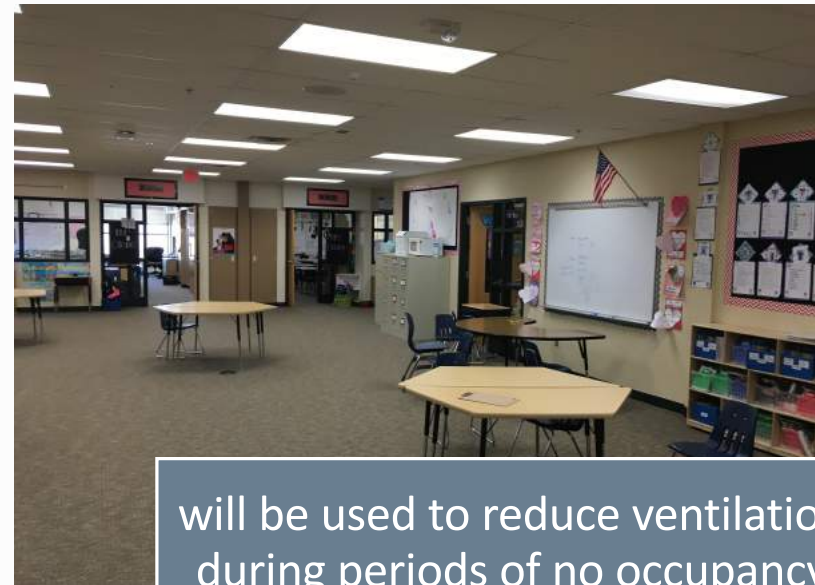


Energy Management Systems

Occupancy control of VAV systems



Occupancy controls installed with the LED lighting retrofit...



will be used to reduce ventilation during periods of no occupancy



High School VAV Boxes

High School (Older Section) VAV Controllers a Priority

- This District is experiencing issues with communications between the older Alerton controls integrated with the new UHL system.

Improved Comfort

- The new controls will improve comfort and reduce space temp control issues (and service calls) but there's really no tangible energy savings as a result.



Energy Management Systems

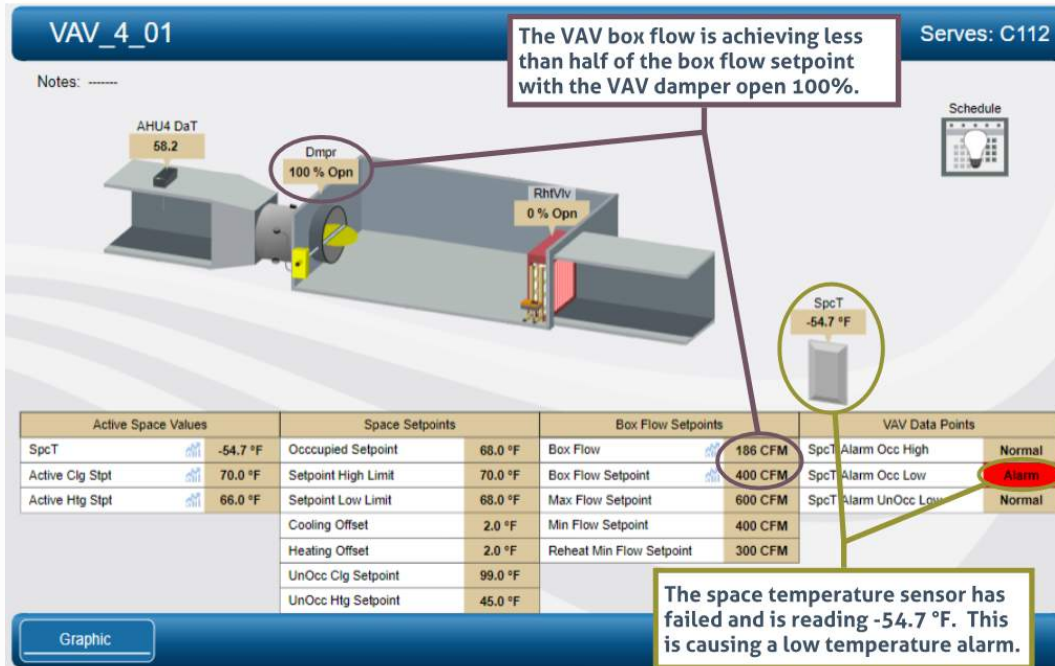
High School - VAV Box Controls Issues

High School (Older Section) VAV Controllers a Priority

- This District is experiencing issues with communications between the older Alerton controls integrated with the new UHL system.

Improved Comfort

- The new controls will improve comfort and reduce space temp control issues (and service calls) but there's really no tangible energy savings as a result.

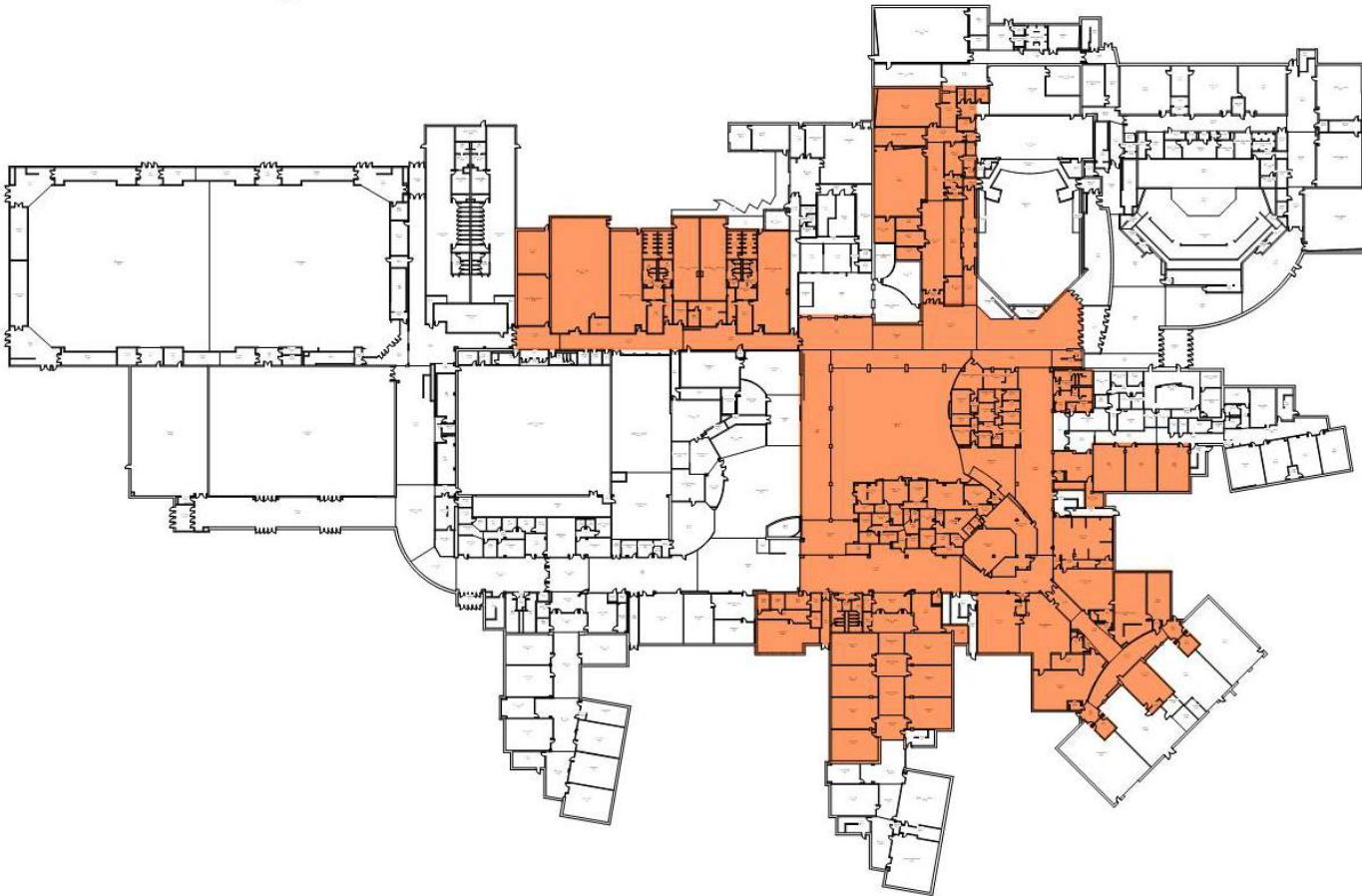


Maintenance staff identified the 2007 VAV controllers as a major issue and concern. Staff has even had to unhook and manually adjust some of the VAV boxes to temporarily fix comfort issues. Issues were observed on multiple VAV boxes similar to those identified in this example.



High School VAV Boxes

2007 VAV systems with controller upgrade needs and Occ sensor opportunities

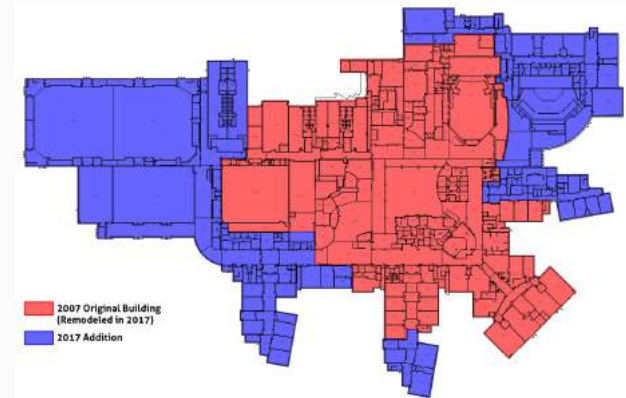


High School (Older Section) VAV Controllers a Priority

• This District is experiencing issues with communications between the older Alerton controls integrated with the new UHL system.

Improved Comfort

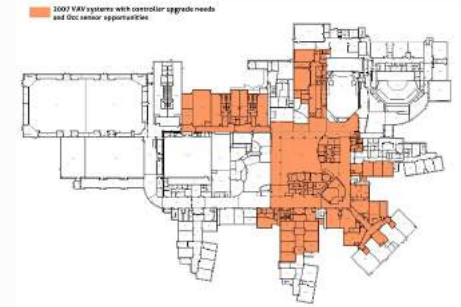
• The new controls will improve comfort and reduce space temp control issues (and service calls) but there's really no tangible energy savings as a result.





Energy Management Systems

High School - VAV Box Controls Upgrade



Replace the current Alerton controllers with new Schneider Electric controllers

Provide and install new discharge air temperature sensors

Provide and install new space temperature sensors

Run new communication link wiring

Programming, alarming, and trending setup for all points



Electrical Systems

Lighting Retrofit with New LED Technology



Retrofit T-8 lamps with new LED technology

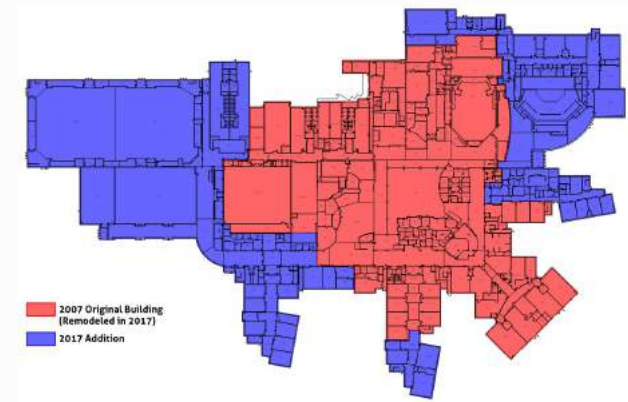
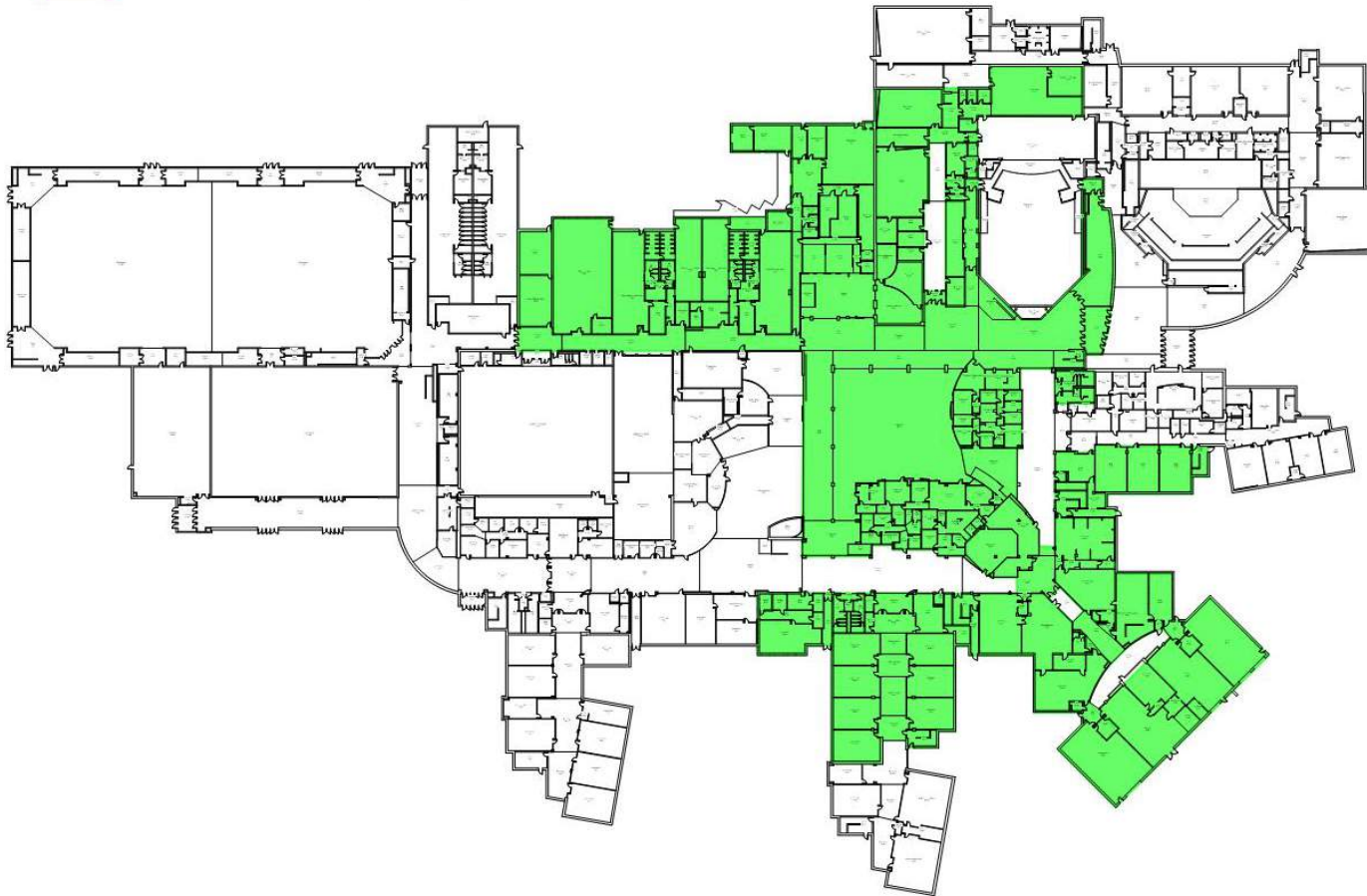


Retrofit high-bay lighting with new LED technology



LED Opportunities at the High School

 LED Lighting Retrofit Opportunity Areas





Electrical Systems

Exterior Lighting



Replace exterior HID lighting...

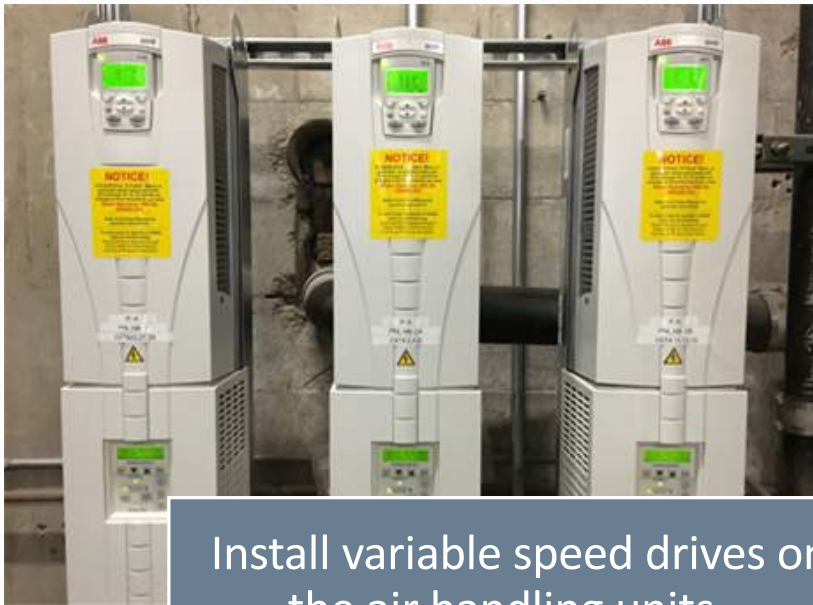


with new LED technology



Electrical Systems

Variable Speed Drives – Air Handling Units



Install variable speed drives on the air handling units...



serving gyms (Red Oak, Eagle Creek) and cafeterias (W Middle)

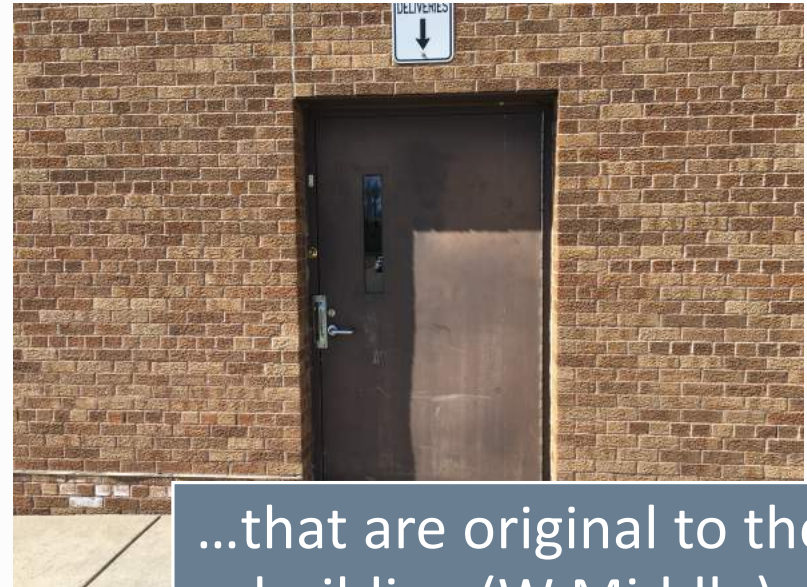


Exterior Envelope

Exterior Door Replacement



Replace older inefficient doors



...that are original to the building (W Middle)



Mechanical Systems

Boiler Replacement



Replace older boilers which are original to the building and beyond their expected service life (E Middle)



Energy Efficiency Program – Scope of Work

Shakopee Senior High	East Middle School	West Middle School	Eagle Creek Elementary	Jackson Elementary	Pearson Elementary	Red Oak Elementary	Sun Path Elementary	Sweeney Elementary	District-Wide																														
<ul style="list-style-type: none"> • Energy Management and DDC - Data Analytics • Occupancy Control of VAV Boxes • Replace VAV Box Controllers • Lighting Retrofit to LED with Occupancy Controls • Variable Speed Drives/Ventilation Control • Theatre - House Lighting Control System (The theater lighting controls/interface system is obsolete and is wearing out) • Theatre - Dimmer Rack Replacement • Theatre - New LED Cyclorama Lighting 	<ul style="list-style-type: none"> • Energy Management and DDC - Data Analytics • Occupancy Control of VAV Boxes • Lighting Retrofit to LED with Occupancy Controls • Automatic Pool Cover • Boiler Plant Replacement - Hot Water Boilers (Boiler #1 and #2 are original from 1976 and beyond their expected service life) 	<ul style="list-style-type: none"> • Energy Management and DDC - Data Analytics • Occupancy Control of VAV Boxes • Lighting Retrofit to LED with Occupancy Controls • Variable Speed Drives/Ventilation Control • Replace the House Lighting System in the Auditorium. (The band teacher identified the theater lighting console as an immediate replacement need) • New Exterior Doors (Most of the exterior doors throughout the 1965 and 1970 building are original. These doors have inefficient single pane glass and aluminum frames. There are also some steel exterior service doors that could be replaced) • De-stratification Fans • Automatic Pool Cover 	<ul style="list-style-type: none"> • Energy Management and DDC - Data Analytics • Occupancy Control of VAV Boxes • Lighting Retrofit to LED with Occupancy Controls • Variable Speed Drives/Ventilation Control 	<ul style="list-style-type: none"> • Energy Management and DDC - Data Analytics • Energy Management and DDC – Complete Allerton Replacement • Occupancy Control of VAV Boxes • Lighting Retrofit to LED with Occupancy Controls • Lighting Control System Replacement 	<ul style="list-style-type: none"> • Energy Management and DDC - Data Analytics • Occupancy Control of VAV Boxes • Lighting Retrofit to LED with Occupancy Controls <p style="background-color: #8ebf42; color: white; padding: 5px; text-align: center;">Work in Pearson Elementary is contingent District's decision to reinvest in this facility</p>	<ul style="list-style-type: none"> • Energy Management and DDC - Data Analytics • Occupancy Control of VAV Boxes • Lighting Retrofit to LED with Occupancy Controls • Variable Speed Drives/Ventilation Control • Variable Speed Drives/Pumps 	<ul style="list-style-type: none"> • Energy Management and DDC - Data Analytics • Occupancy Control of VAV Boxes • Lighting Retrofit to LED with Occupancy Controls 	<ul style="list-style-type: none"> • Energy Management and DDC - Data Analytics • Occupancy Control of VAV Boxes • Lighting Retrofit to LED with Occupancy Controls • Domestic Water Fixture Upgrades 1967 	<ul style="list-style-type: none"> • Miscellaneous Operations & Maintenance Repairs • CMMS Upgrade/Expansion - AkitaBox 																														
<table border="1" style="width: 100%; border-collapse: collapse;"> <thead> <tr> <th colspan="2" style="background-color: #003366; color: white;">Energy Program Costs</th> </tr> <tr> <th style="background-color: #003366; color: white;">Facility</th> <th style="background-color: #003366; color: white;">Totals</th> </tr> </thead> <tbody> <tr> <td>Shakopee Senior High</td> <td style="text-align: right;">\$ 1,167,450</td> </tr> <tr> <td>East Middle School</td> <td style="text-align: right;">\$ 1,077,900</td> </tr> <tr> <td>West Middle School</td> <td style="text-align: right;">\$ 1,054,500</td> </tr> <tr> <td>Eagle Creek Elementary</td> <td style="text-align: right;">\$ 352,000</td> </tr> <tr> <td>Jackson Elementary</td> <td style="text-align: right;">\$ 1,243,300</td> </tr> <tr> <td>Pearson Elementary</td> <td style="text-align: right;">\$ 247,500</td> </tr> <tr> <td>Red Oak Elementary</td> <td style="text-align: right;">\$ 407,600</td> </tr> <tr> <td>Sun Path Elementary</td> <td style="text-align: right;">\$ 392,700</td> </tr> <tr> <td>Sweeney Elementary</td> <td style="text-align: right;">\$ 287,900</td> </tr> <tr> <td>Central Family Center</td> <td style="text-align: right;">\$ -</td> </tr> <tr> <td>District Offices</td> <td style="text-align: right;">\$ -</td> </tr> <tr> <td>District-Wide</td> <td style="text-align: right;">\$ 334,800</td> </tr> <tr> <td style="text-align: right;">Totals</td> <td style="text-align: right;">\$ 6,565,650</td> </tr> </tbody> </table>										Energy Program Costs		Facility	Totals	Shakopee Senior High	\$ 1,167,450	East Middle School	\$ 1,077,900	West Middle School	\$ 1,054,500	Eagle Creek Elementary	\$ 352,000	Jackson Elementary	\$ 1,243,300	Pearson Elementary	\$ 247,500	Red Oak Elementary	\$ 407,600	Sun Path Elementary	\$ 392,700	Sweeney Elementary	\$ 287,900	Central Family Center	\$ -	District Offices	\$ -	District-Wide	\$ 334,800	Totals	\$ 6,565,650
Energy Program Costs																																							
Facility	Totals																																						
Shakopee Senior High	\$ 1,167,450																																						
East Middle School	\$ 1,077,900																																						
West Middle School	\$ 1,054,500																																						
Eagle Creek Elementary	\$ 352,000																																						
Jackson Elementary	\$ 1,243,300																																						
Pearson Elementary	\$ 247,500																																						
Red Oak Elementary	\$ 407,600																																						
Sun Path Elementary	\$ 392,700																																						
Sweeney Elementary	\$ 287,900																																						
Central Family Center	\$ -																																						
District Offices	\$ -																																						
District-Wide	\$ 334,800																																						
Totals	\$ 6,565,650																																						



Energy Efficiency Program

Integral Component of Facilities Maintenance Initiative

- Funding mechanism for non-eligible (but necessary) LTFM improvements (e.g. lighting upgrades)

Scope of Work

- Energy efficiency improvements

Self-Funding

- Utility and operating efficiency fund the project
- Budget neutral over the 15-year term of financing; **no tax impact**

Reduces Burden on LTFM Resources

- Energy program will fund approximately \$1.7 million of LTFM improvements

Reduces Operating and Maintenance Expense

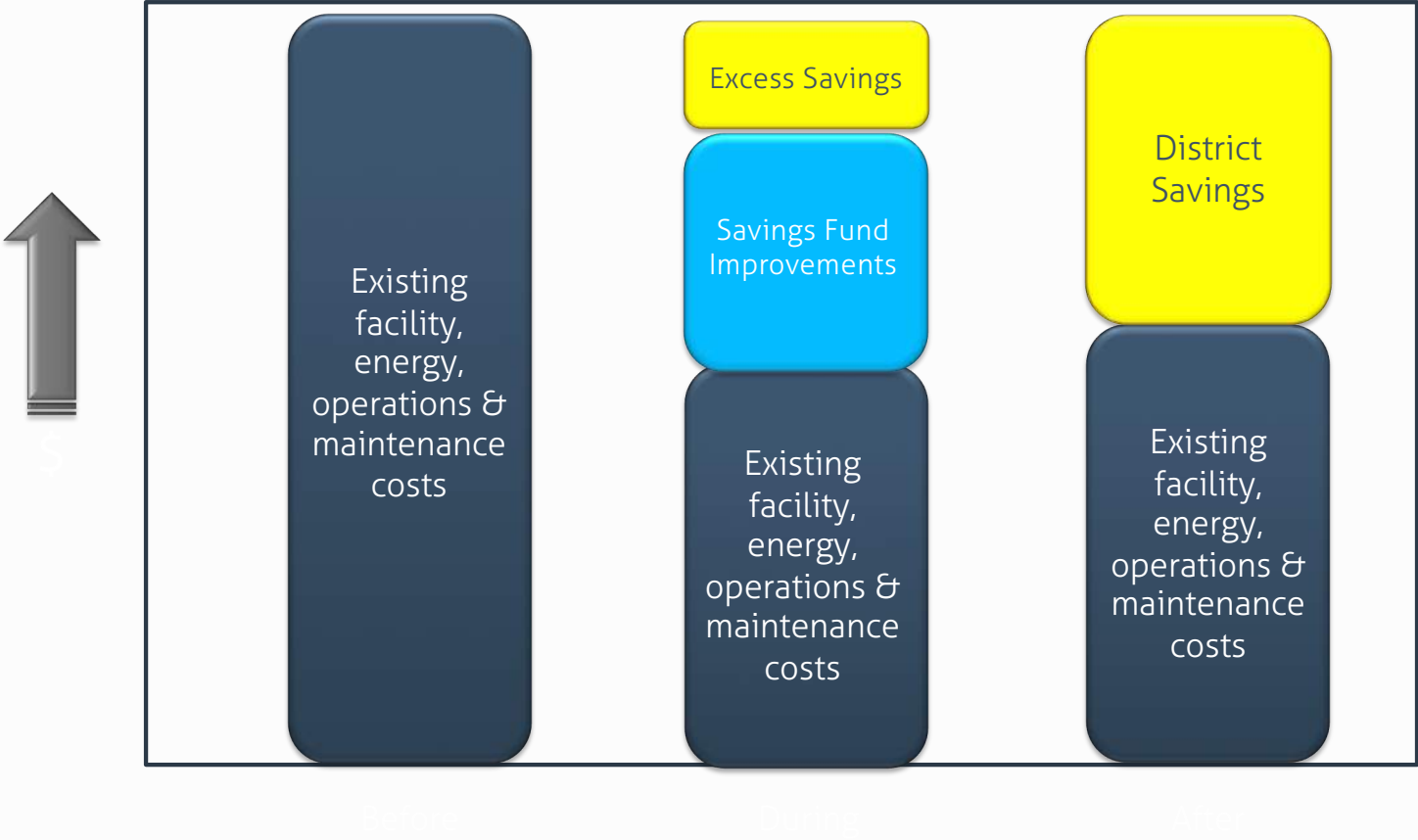
- Redirect valuable general fund resources back into education

Description	MN Statute	Use of Funds	Does this generate new dollars to District budget	Does this require Voter Approval	What kind of borrowing?	Will there be a new tax impact associated with levy	Who pays for the levy and which tax base is utilized	Max Term
Energy Efficiency Project	123B.65	Multiple Uses	No	No	Several options	No	Not Applicable	15 years
Referendum Revenue / Operating Levy Revenue	126C.17	Day-to-day operations	Yes	Yes	Typically, none	Yes	House, garage, and one acre; RMV	10 Years
School Building Bonds	475 & 123B.02	Capital Expenditures	Yes	Yes	General Obligation	Yes	All taxable property; NTC	30 years or useful life
Capital Projects Levy	123B.63	Capital expenditures defined in 126C.10 subd. 14	Yes	Yes	Certificates of Participation	Yes	All taxable property; NTC	10 Years
Capital Facilities Bonds	123B.62	Capital expenditures defined in 126C.62	No	No	General Obligation	No	All taxable property; NTC	15 years or useful life
Capital Equipment Notes	123B.61	Capital expenditures defined in 126C.61	No	No	General Obligation	No	All taxable property; NTC	10 years or useful life
Long-Term Facility Maintenance Levy	123B.595	Deferred capital expenditures & Health and Safety projects	Yes	No	General Obligation	Yes	All taxable property; NTC	30 years or useful life
Lease Levy / Capital Levies	126C.40	Capital expenditures defined in 126C.40	Yes	No	Certificates of Participation	Yes	All taxable property; NTC	30 years or useful life
Abatement Bond	469.1812 to 469.1815	School Parking Lot Improvements	Yes	No	General Obligation	Yes	All taxable property; NTC	15 years or useful life

Description	MN Statute	Use of Funds	Does this generate new dollars to District budget	Does this require Voter Approval	What kind of borrowing?	Will there be a new tax impact associated with levy	Who pays for the levy and which tax base is utilized	Max Term
Energy Efficiency Project	123B.65	Multiple Uses	No	No	Several options	No	Not Applicable	15 years
Referendum Revenue / Operating Levy Revenue	126C.17	Day-to-day operations	Yes	Yes	Typically, none	Yes	House, garage, and one acre; RMV	10 Years
School Building Bonds	475 & 123B.02	Capital Expenditures	Yes	Yes	General Obligation	Yes	All taxable property; NTC	30 years or useful life
Capital Projects Levy	123B.63	Capital expenditures defined in 126C.10 subd. 14	Yes	Yes	Certificates of Participation	Yes	All taxable property; NTC	10 Years
Capital Facilities Bonds	123B.62	Capital expenditures defined in 126C.62	No	No	General Obligation	No	All taxable property; NTC	15 years or useful life
Capital Equipment Notes	123B.61	Capital expenditures defined in 126C.61	No	No	General Obligation	No	All taxable property; NTC	10 years or useful life
Long-Term Facility Maintenance Levy	123B.595	Deferred capital expenditures & Health and Safety projects	Yes	No	General Obligation	Yes	All taxable property; NTC	30 years or useful life
Lease Levy / Capital Levies	126C.40	Capital expenditures defined in 126C.40	Yes	No	Certificates of Participation	Yes	All taxable property; NTC	30 years or useful life
Abatement Bond	469.1812 to 469.1815	School Parking Lot Improvements	Yes	No	General Obligation	Yes	All taxable property; NTC	15 years or useful life



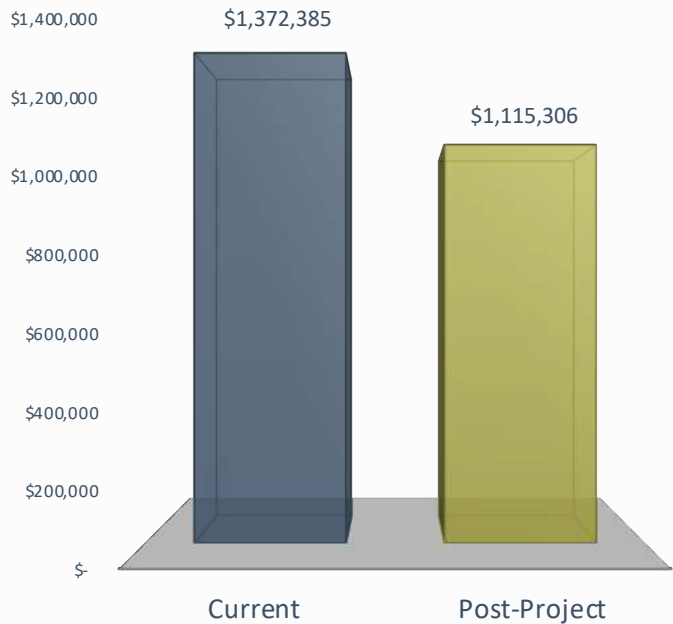
Savings Fund the Project...



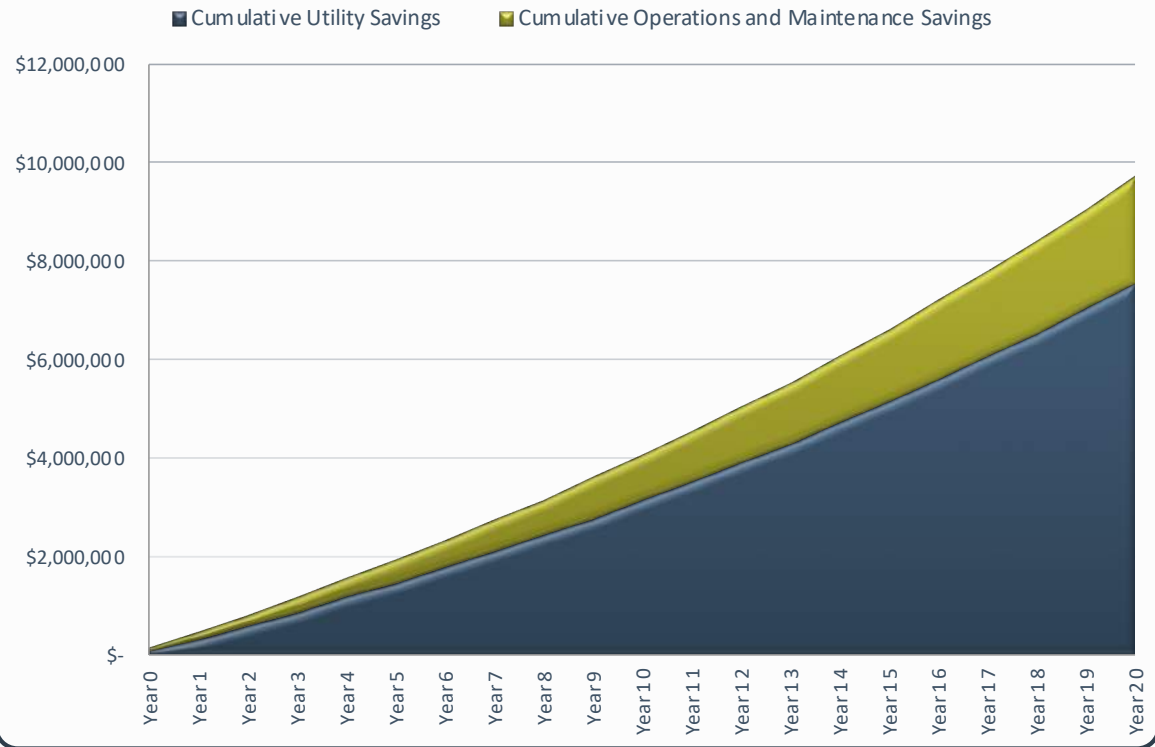


Shakopee Schools' Savings Opportunity

Annual District-Wide Utility Cost



Savings Over Time





Budget Neutral Cash Flow

CAPITAL INVESTMENT	\$	6,565,650
Grants	\$	-
Capital Buy-Down	\$	(1,000,000)
NET INVESTMENT FINANCED	\$	5,565,650

Sources of Financing			
Source of Financing	Rate	Years	Amount
3rd Party Financing	2.50%	15	\$ 5,565,650

YEARS	PROJECT FUNDING				EXPENSES		CASH FLOW ANALYSIS	
	Utility Savings	Operational Savings	Escrow Interest Earnings	Rebates	3rd Party Financing	Technical Resource Services	Annual Cash Flow	Cumulative Cash Flow
Year 0	\$ 73,408	\$ 70,200	\$ 27,828	\$ 112,875	\$ (139,141)	\$ -	\$ 145,170	\$ 145,170
Year 1	\$ 257,079	\$ 72,833	\$ -	\$ -	\$ (438,554)	\$ (15,500)	\$ (124,143)	\$ 21,027
Year 2	\$ 266,719	\$ 75,564	\$ -	\$ -	\$ (438,554)	\$ (16,081)	\$ (112,352)	\$ (91,326)
Year 3	\$ 276,721	\$ 78,397	\$ -	\$ -	\$ (438,554)	\$ (16,684)	\$ (100,120)	\$ (191,445)
Year 4	\$ 287,098	\$ 81,337	\$ -	\$ -	\$ (438,554)	\$ -	\$ (70,119)	\$ (261,564)
Year 5	\$ 297,864	\$ 84,387	\$ -	\$ -	\$ (438,554)	\$ -	\$ (56,302)	\$ (317,866)
Year 6	\$ 309,034	\$ 87,552	\$ -	\$ -	\$ (438,554)	\$ -	\$ (41,968)	\$ (359,834)
Year 7	\$ 320,623	\$ 90,835	\$ -	\$ -	\$ (438,554)	\$ -	\$ (27,096)	\$ (386,930)
Year 8	\$ 332,646	\$ 94,241	\$ -	\$ -	\$ (438,554)	\$ -	\$ (11,666)	\$ (398,596)
Year 9	\$ 345,121	\$ 97,776	\$ -	\$ -	\$ (438,554)	\$ -	\$ 4,342	\$ (394,254)
Year 10	\$ 358,063	\$ 101,442	\$ -	\$ -	\$ (438,554)	\$ -	\$ 20,951	\$ (373,303)
Year 11	\$ 371,490	\$ 105,246	\$ -	\$ -	\$ (438,554)	\$ -	\$ 38,182	\$ (335,121)
Year 12	\$ 385,421	\$ 109,193	\$ -	\$ -	\$ (438,554)	\$ -	\$ 56,060	\$ (279,061)
Year 13	\$ 399,874	\$ 113,288	\$ -	\$ -	\$ (438,554)	\$ -	\$ 74,608	\$ (204,454)
Year 14	\$ 414,869	\$ 117,536	\$ -	\$ -	\$ (438,554)	\$ -	\$ 93,851	\$ (110,602)
Year 15	\$ 430,427	\$ 121,944	\$ -	\$ -	\$ (438,554)	\$ -	\$ 113,817	\$ 3,214
Year 16	\$ 446,568	\$ 126,516	\$ -	\$ -	\$ -	\$ -	\$ 573,084	\$ 576,299
Year 17	\$ 463,314	\$ 131,261	\$ -	\$ -	\$ -	\$ -	\$ 594,575	\$ 1,170,874
Year 18	\$ 480,689	\$ 136,183	\$ -	\$ -	\$ -	\$ -	\$ 616,872	\$ 1,787,745
Year 19	\$ 498,714	\$ 141,290	\$ -	\$ -	\$ -	\$ -	\$ 640,004	\$ 2,427,750
Year 20	\$ 517,416	\$ 146,588	\$ -	\$ -	\$ -	\$ -	\$ 664,004	\$ 3,091,754
TOTALS	\$ 7,533,159	\$ 2,183,609	\$ 27,828	\$ 112,875	\$ (6,717,451)	\$ (48,266)	\$ 3,091,754	\$ 3,091,754



Energy Efficiency Program

Integral Component of Facilities Maintenance Initiative

- Funding mechanism for non-eligible (but necessary) LTFM improvements (e.g. lighting upgrades)

Scope of Work

- Energy efficiency improvements

Self-Funding

- Utility and operating efficiency fund the project
- Budget neutral over the 15-year term of financing

Reduces Burden on LTFM Resources

- Energy program will fund approximately \$1.7 million of LTFM improvements

Reduces Operating and Maintenance Expense

- Redirect valuable general fund resources back into education



Energy Efficiency Program – Scope of Work

Shakopee Senior High	East Middle School	West Middle School	Eagle Creek Elementary	Jackson Elementary	Pearson Elementary	Red Oak Elementary	Sun Path Elementary	Sweeney Elementary	District-Wide
<ul style="list-style-type: none"> • Energy Management and DDC - Data Analytics • Occupancy Control of VAV Boxes • Replace VAV Box Controllers • Lighting Retrofit to LED with Occupancy Controls • Variable Speed Drives/Ventilation Control • Theatre - House Lighting Control System (The theater lighting controls/interface system is obsolete and is wearing out) • Theatre - Dimmer Rack Replacement • Theatre - New LED Cyclorama Lighting 	<ul style="list-style-type: none"> • Energy Management and DDC - Data Analytics • Occupancy Control of VAV Boxes • Lighting Retrofit to LED with Occupancy Controls • Automatic Pool Cover • Boiler Plant Replacement - Hot Water Boilers (Boiler #1 and #2 are original from 1976 and beyond their expected service life) 	<ul style="list-style-type: none"> • Energy Management and DDC - Data Analytics • Occupancy Control of VAV Boxes • Lighting Retrofit to LED with Occupancy Controls • Variable Speed Drives/Ventilation Control • Replace the House Lighting System in the Auditorium. (The band teacher identified the theater lighting console as an immediate replacement need) • New Exterior Doors (Most of the exterior doors throughout the 1965 and 1970 building are original. These doors have inefficient single pane glass and aluminum frames. There are also some steel exterior service doors that could be replaced) • Destratification Fans • Automatic Pool Cover 	<ul style="list-style-type: none"> • Energy Management and DDC - Data Analytics • Occupancy Control of VAV Boxes • Lighting Retrofit to LED with Occupancy Controls • Variable Speed Drives/Ventilation Control 	<ul style="list-style-type: none"> • Energy Management and DDC - Data Analytics • Energy Management and DDC – Complete Allerton Replacement • Occupancy Control of VAV Boxes • Lighting Retrofit to LED with Occupancy Controls • Lighting Control System Replacement 	<ul style="list-style-type: none"> • Energy Management and DDC - Data Analytics • Occupancy Control of VAV Boxes • Lighting Retrofit to LED with Occupancy Controls 	<ul style="list-style-type: none"> • Energy Management and DDC - Data Analytics • Occupancy Control of VAV Boxes • Lighting Retrofit to LED with Occupancy Controls • Variable Speed Drives/Ventilation Control • Variable Speed Drives/Pumps 	<ul style="list-style-type: none"> • Energy Management and DDC - Data Analytics • Occupancy Control of VAV Boxes • Lighting Retrofit to LED with Occupancy Controls 	<ul style="list-style-type: none"> • Energy Management and DDC - Data Analytics • Occupancy Control of VAV Boxes • Lighting Retrofit to LED with Occupancy Controls • Domestic Water Fixture Upgrades 1967 	<ul style="list-style-type: none"> • Miscellaneous Operations & Maintenance Repairs • CMMS Upgrade/Expansion - AkitaBox

Items in **RED** are improvements without savings, but being funded by the Energy Efficiency Program. This is roughly \$1.7 million of work. This reduces the burden on the LTFM program

Energy Program Costs	
Facility	Totals
Shakopee Senior High	\$ 1,167,450
East Middle School	\$ 1,077,900
West Middle School	\$ 1,054,500
Eagle Creek Elementary	\$ 352,000
Jackson Elementary	\$ 1,243,300
Pearson Elementary	\$ 247,500
Red Oak Elementary	\$ 407,600
Sun Path Elementary	\$ 392,700
Sweeney Elementary	\$ 287,900
Central Family Center	\$ -
District Offices	\$ -
District-Wide	\$ 334,800
Totals	\$ 6,565,650



Energy Efficiency Program

Integral Component of Facilities Maintenance Initiative

- Funding mechanism for non-eligible (but necessary) LTFM improvements (e.g. lighting upgrades)

Scope of Work

- Energy efficiency improvements

Self-Funding

- Utility and operating efficiency fund the project
- Budget neutral over the 15-year term of financing

Reduces Burden on LTFM Resources

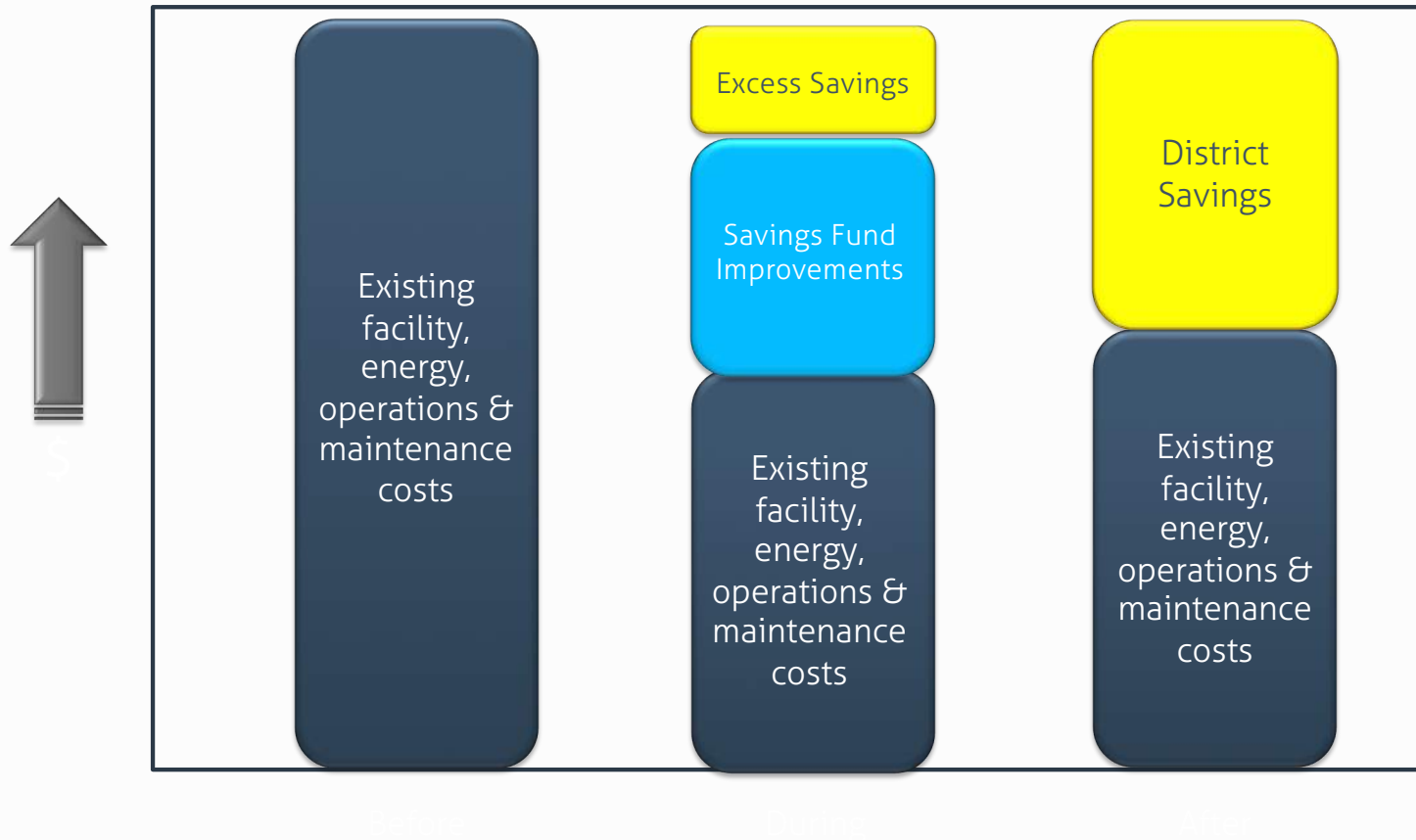
- Energy program will fund approximately \$1.7 million of LTFM improvements

Reduces Operating and Maintenance Expense

- Redirect valuable general fund resources back into education



Savings Fund the Project...





Next Steps



Board Approval Requested

Administration is recommending approving this program, as an integral component of the facility maintenance plan

- This program self-funds and is budget neutral over the 15-year term of financing
- This program funds necessary improvements that are ineligible LTFM expenditures (e.g. lighting)
- This program reduces the burden on LTFM resources (\$1.7 million) by funding needed improvements
- This program creates general fund savings that can be redirected back into education

Administration is requesting your authorization to complete the energy efficiency program



Thank You!

Get in Touch!

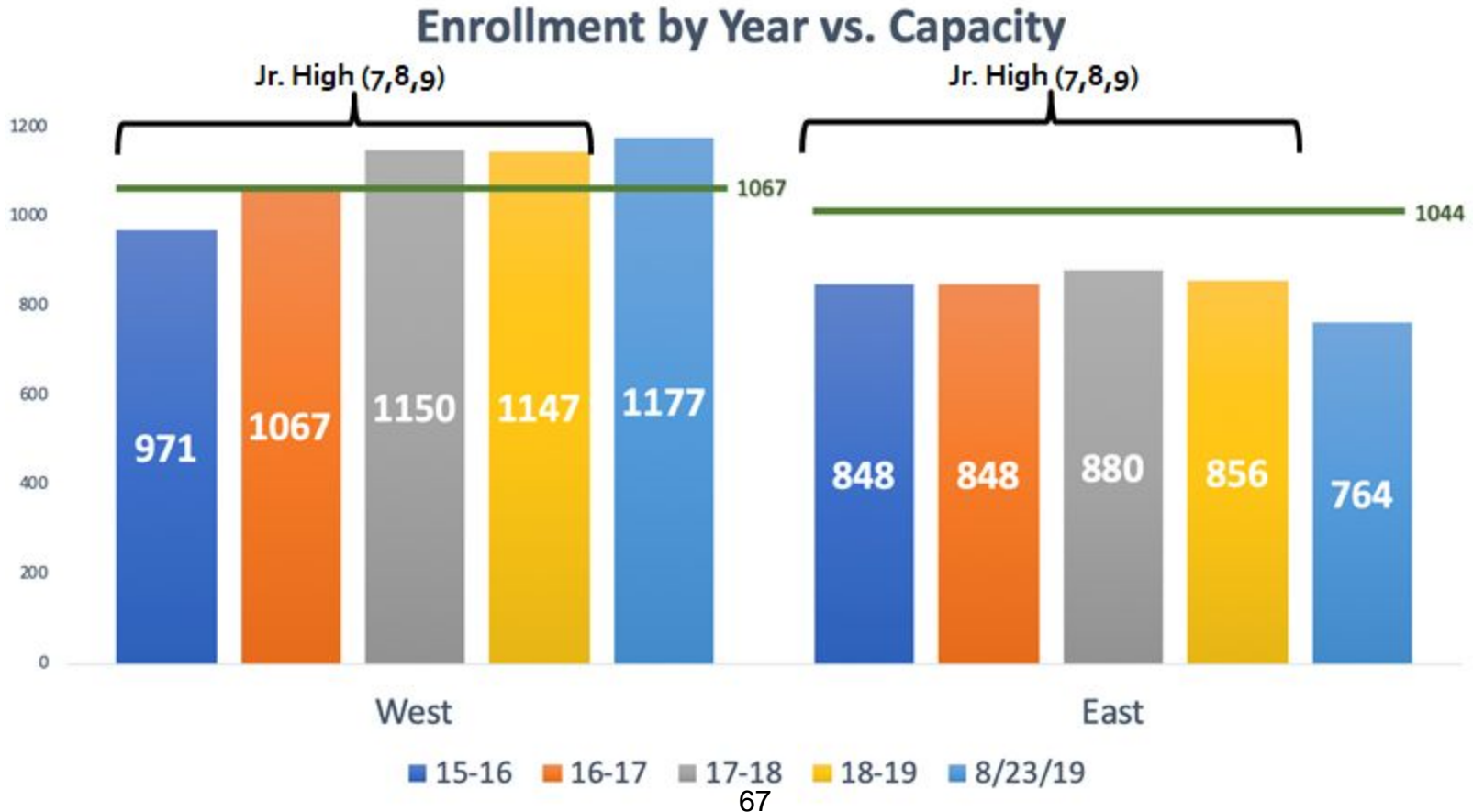
We'd love to hear from you.

Unesco
2125 2nd Street
Saint Paul, MN 55110
☎ (888) 514-1971

Middle School Attendance Areas

Plan for 2020-21

Why does this need to be addressed?



Baseline enrollment end-of 18-19 school year

		Kdg	1st	2nd	3rd	4th	5th	Total
<i>East Middle</i>	Red Oak	81	117	75	99	87	105	564
	Sun Path	95	104	103	117	87	105	611
								0
	Total	176	221	178	216	174	210	

		Kdg	1st	2nd	3rd	4th	5th	Total
<i>West Middle</i>	Eagle Creek	136	118	135	117	127	135	768
	Jackson	134	149	126	151	131	161	852
	Sweeney	108	111	101	99	124	116	659
	Total	378	378	362	367	382	412	

Totals	554	599	540	583	556	622	3454
---------------	-----	-----	-----	-----	-----	-----	-------------

East	6th	7th	8th	Total
Year 0: 18-19	252	287	298	837
Year 1: 19-20	231	252	287	770
Year 2: 20-21	193	231	252	676
Year 3: 21-22	234	193	231	658
Year 4: 22-23	196	234	193	623

West	6th	7th	8th	Total
Year 0: 18-19	384	367	402	1153
Year 1: 19-20	391	384	367	1142
Year 2: 20-21	363	391	384	1138
Year 3: 21-22	349	363	391	1103
Year 4: 22-23	344	349	363	1056

Year 0	316
Year 1	372
Year 2	462
Year 3	445
Year 4	433

Actual as of 9-18-19

East MS: 746

West MS: 1,173

Difference: 427

- We are using a “feeder” model elementary to middle
- The student count difference between middle schools is at 427 for 19-20, and projected over 400 into the future.
- Capacities EMS: 1044 (746) WMS: 1067 (1173)
- The difference creates challenges
 - Core staffing is similar (Admin, counselors, etc.)
 - Teaming
 - Common areas (ex: commons, lunchroom, halls)
 - Transfer requests
 - other

~Projections do not currently account for any new housing

Projected Timeline

Date (original timeline)	Item
3/16/19, School Board Meeting	Presentation on enrollment trends the last 2 years. Included building capacities, student enrollment, and a review of development within the district.
7/8/19, Board summer retreat/work session	Review of data on current student populations by school, and projections for the next 5 years Board direction to develop ~3 Middle School scenarios without constraints of feeder elementary schools.
7/11/19, Community Facilities Task Force meeting	Similar information presented at Community Facilities Task Force meeting. Feedback similar to board feedback on feeder schools, and recognition of concern around size of EMS and WMS.
8/26/19, School Board Meeting	School Board meeting - decision, timeline, criteria presentation. Discuss process for public meetings, input, feedback
9/23 (preferred) School Board Meeting	Present ~3 draft scenarios and include multi-year projections. Get feedback. Possibly set final timeline for change.
9/23 - 12/9	Develop answers to open issues: Intra-district transfers & Open enrollments, Roll-up by grade-level or all move at once, Transportation, Students with Siblings, Childcare, Process for staff adjustments/moves, Communication plan, Other factors
10/14/19	School board meeting presentation of 2-3 draft scenarios
10/29/19: EMS 6-7pm 11/7/19: WMS 6-7pm	Review of proposed middle school attendance areas for 20-21(public meetings, availability online that includes lookup tool, other communications)
11/18/19	Board reviews feedback, and decides how to proceed
12/9/19 (or 1/6/20)	Action item: 20-21 proposed MS attendance areas
1/13/20-1/27/20	IC technical work: update address connections to schools, preload core, gateway, advanced courses
1/27/20	Parent Information Nights for MS registration
2/3/20	Registration portal opened

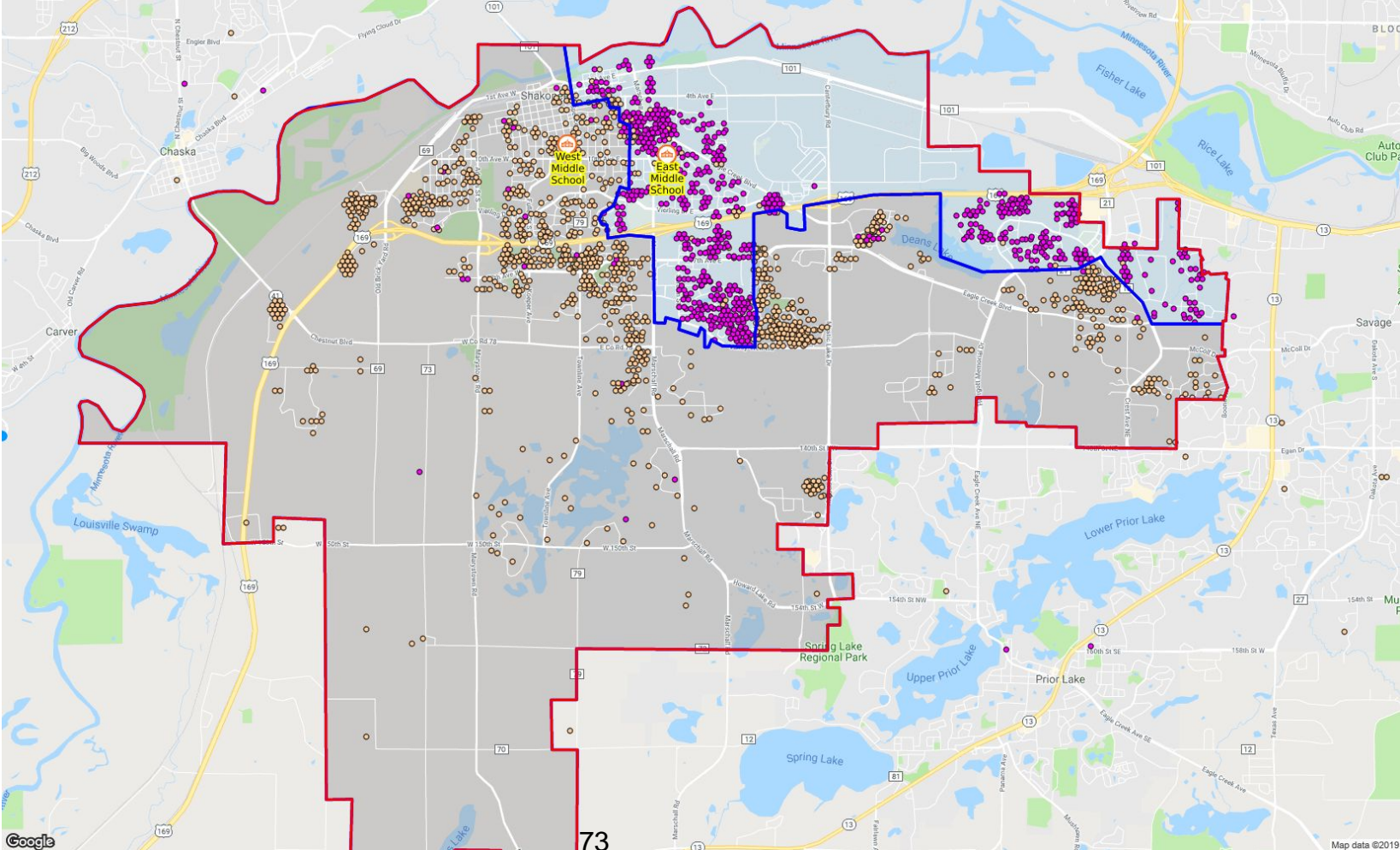
Draft Scenarios

Proposed criteria/parameters (not ranked in priority order)

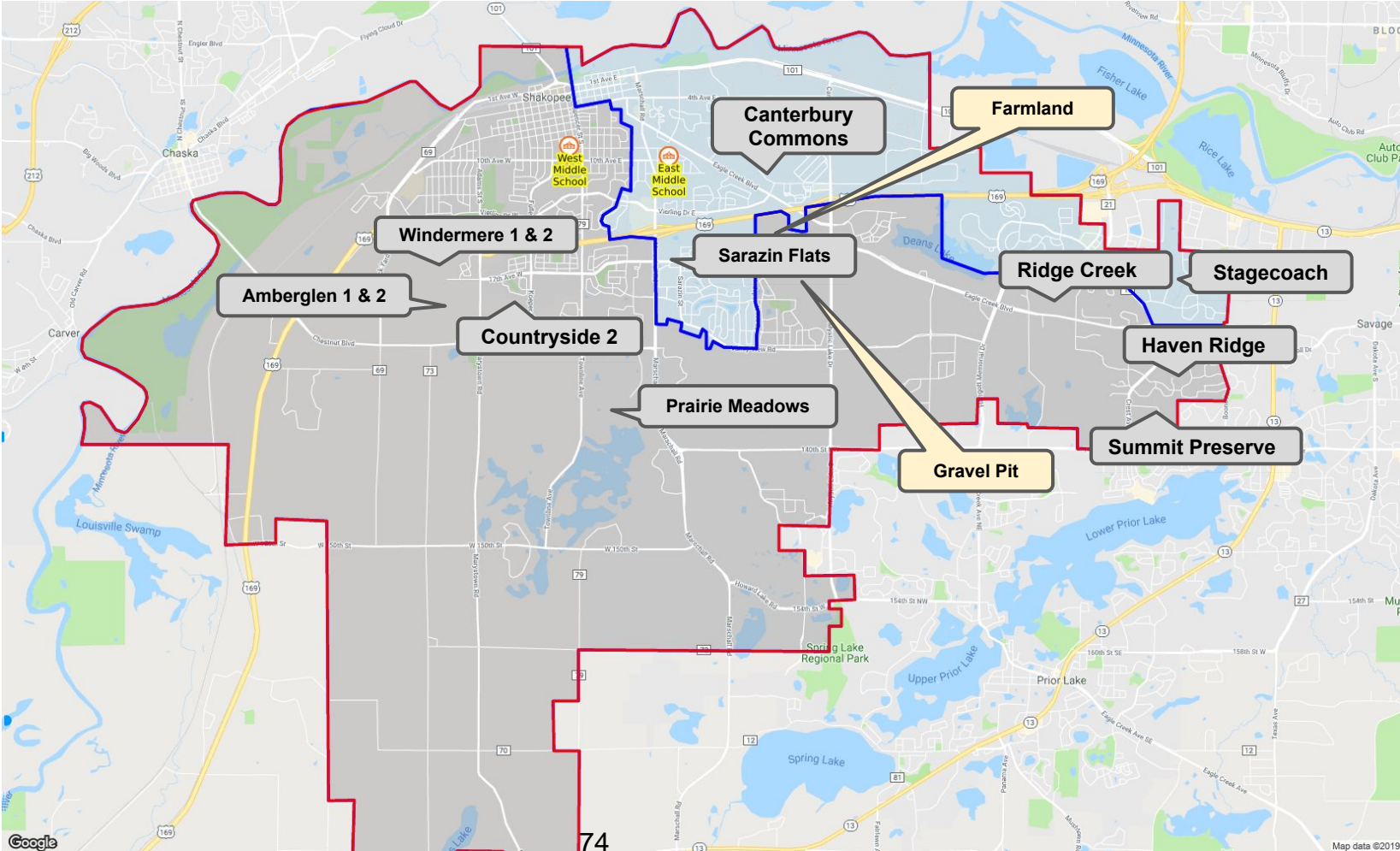
- Walking distance
- Contiguous as much as possible
- Similar Demographics: Free/Reduced lunch, EL, SpEd
- Efficient Transportation
- Building capacity
- Recognition of proposed growth/developments
- Other considerations
- Last 3-5 years ... better 5-7

Current Elem Attendance Area	Current	#106	#107	#108	Development Name	Active	Details	Single Family Units	Multi-Family Units/Townhouse	Apartments	K-5	6-8	9-12
Eagle Creek	WMS	EMS	EMS	EMS	Haven Ridge	Y		76	57	0	27.9	15.2	18.2
Eagle Creek	WMS	EMS	EMS	EMS	Haven Ridge South	N		32	0	0	7.7	4.5	5.8
Eagle Creek	WMS	EMS	EMS	EMS	Ridge Creek	Y	phase 1 - 44	101	0	0	24.2	14.1	18.2
Eagle Creek	WMS	EMS	EMS	EMS	Summit Preserve	Y		67	103	0	33.6	17.6	20.3
Eagle Creek	WMS	EMS	EMS	EMS	Gravel Pit (no application)	N							
Eagle Creek	WMS	EMS	EMS	EMS	Farmland north of gravel pit (no application)	N							
Eagle Creek Total								276	160	0	93.4	51.4	62.5
Jackson	WMS	WMS	WMS	WMS	Countryside 2nd Addition	Y		31	0	0	7.4	4.3	5.6
Jackson	WMS	WMS	WMS	WMS	Kristal Estates	N		5	0	0	1.2	0.7	0.9
Jackson	WMS	WMS	WMS	WMS	The Sixton Apartments	Y		0	0	133	13.3	6.7	6.7
Jackson	WMS	WMS	WMS	WMS	West Shakopee Gateway (no application)	N		0	0	0	0.0	0.0	0.0
Jackson Total								36	0	133	21.9	11.7	13.1
Red Oak	EMS	EMS	EMS	EMS	Canterbury Commons	N		0	156	0	26.5	12.5	12.5
Red Oak	EMS	EMS	EMS	EMS	Stagecoach at Southbridge	Y		60	0	0	14.4	8.4	10.8
Red Oak	EMS	EMS	EMS	EMS	The Triple Crown at Canterbury	Y	300 unit started	0	0	600	60.0	30.0	30.0
Red Oak Total								60	156	600	100.9	50.9	53.3
Sun Path	EMS	EMS	WMS	WMS	Sarazin Flats	Y		0	105	0	17.9	8.4	8.4
Sun Path Total								0	105	0	17.9	8.4	8.4
Sweeney	WMS	WMS	WMS	WMS	Benedictine Health Services at Windermere	N	senior housing	0	0	0	0.0	0.0	0.0
Sweeney	WMS	WMS	WMS	WMS	Menden Addition	Y		12	0	0	2.9	1.7	2.2
Sweeney	WMS	WMS	WMS	WMS	Prairie Meadows 1st & 2nd Additions	Y	phase 1 - 25	45	0	0	10.8	6.3	8.1
Sweeney	WMS	WMS	WMS	WMS	Westridge Lake Estates	Y		14	0	0	3.4	2.0	2.5
Sweeney	WMS	WMS	WMS	WMS	Windermere - The Willows	N	summer - 80% inc	0	0	60	6.0	3.0	3.0
Sweeney	WMS	WMS	WMS	WMS	Windermere 1st Addition	Y	complete	19	0	0	4.6	2.7	3.4
Sweeney	WMS	WMS	WMS	WMS	Windermere 2nd Addition	Y	20% complete	27	0	0	6.5	3.8	4.9
Sweeney	WMS	WMS	WMS	WMS	Windermere South/Amberglan 1st Addition	Y		31	0	0	7.4	4.3	5.6
Sweeney	WMS	WMS	WMS	WMS	Windermere South/Amberglan 2nd Addition	N	under review	125	0	0	30.0	17.5	22.5
Sweeney	WMS	WMS	WMS	WMS	Windermere Townhomes	Y	complete	0	38	0	6.5	3.0	3.0
Sweeney Total								273	38	60	78.0	44.3	55.2
Grand Total								645	459	793	312.1	166.7	192.5

Current Reality



Current Reality



Current Reality - Statistics

C R # u e 1 r a 0 e i 9 n t t y		Total	Capacity	% Capacity	Open Seats	New Devel	Projected	% Capacity	Proj Open	% F/R	%SpEd	% EL
	East	742	1044	71%	302	59	801	77%	243	44%	18%	9%
	West	1175	1067	110%	-108	107	1282	120%	-215	34%	15%	6%
										Range	10%	3%

Grade 6 School 19-20 <input type="button" value="v"/>			
Grade 5 School 18-19 <input type="button" value="v"/>	East Middle School	West Middle School	Grand Total
Eagle Creek Elementary	21	106	127
Jackson Elementary	6	146	152
Red Oak Elementary	92	8	100
Sun Path Elementary	80	13	93
Sweeney Elementary	3	110	113
Elsewhere School	3	5	8
Nonpublic School	1	7	8
Not enrolled in district for 5th grade	9	17	26
Grand Total	215	412	627

Current Reality - Multi-Year

Current Reality

	Kdg	1st	2nd	3rd	4th	5th	Total
East MS	208	210	211	202	223	224	1278
West MS	301	336	349	330	339	331	1986
Total	509	546	560	532	562	555	3264

Current Reality

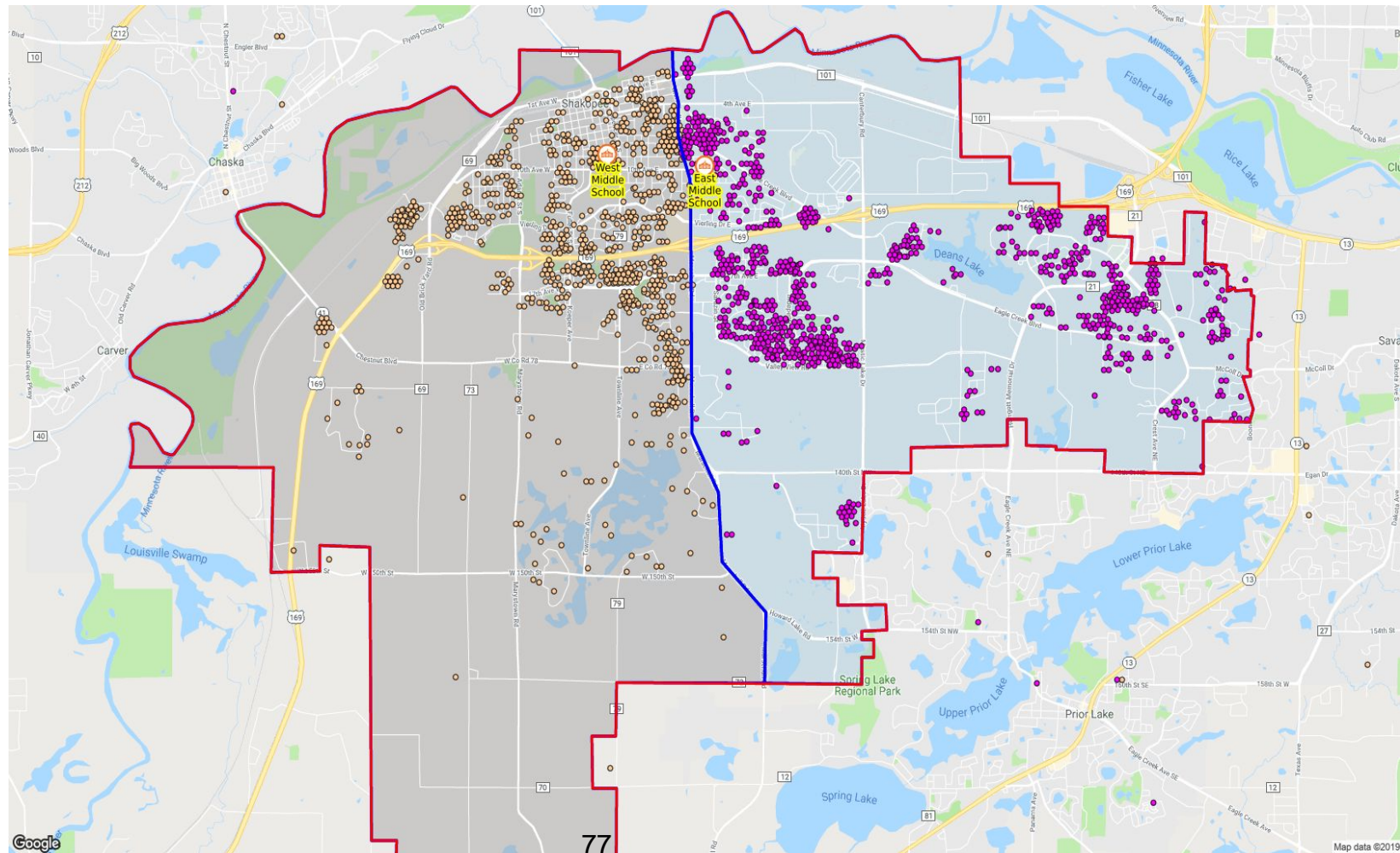
East	6th	7th	8th	Total
Year 1: 20-21	214	244	287	745
Year 2: 21-22	223	214	244	681
Year 3: 22-23	202	223	214	639
Year 4: 23-24	211	202	223	636
Year 5: 24-25	210	211	202	623
Year 6: 25-26	208	210	211	629

West	6th	7th	8th	Total
Y1: 20-21	403	403	369	1175
Y2: 21-22	339	403	403	1145
Y3: 22-23	330	339	403	1072
Y4: 23-24	349	330	339	1018
Y5: 24-25	336	349	330	1015
Y6: 25-26	301	336	349	986

Difference	
Year 1	430
Year 2	464
Year 3	433
Year 4	382
Year 5	392
Year 6	357

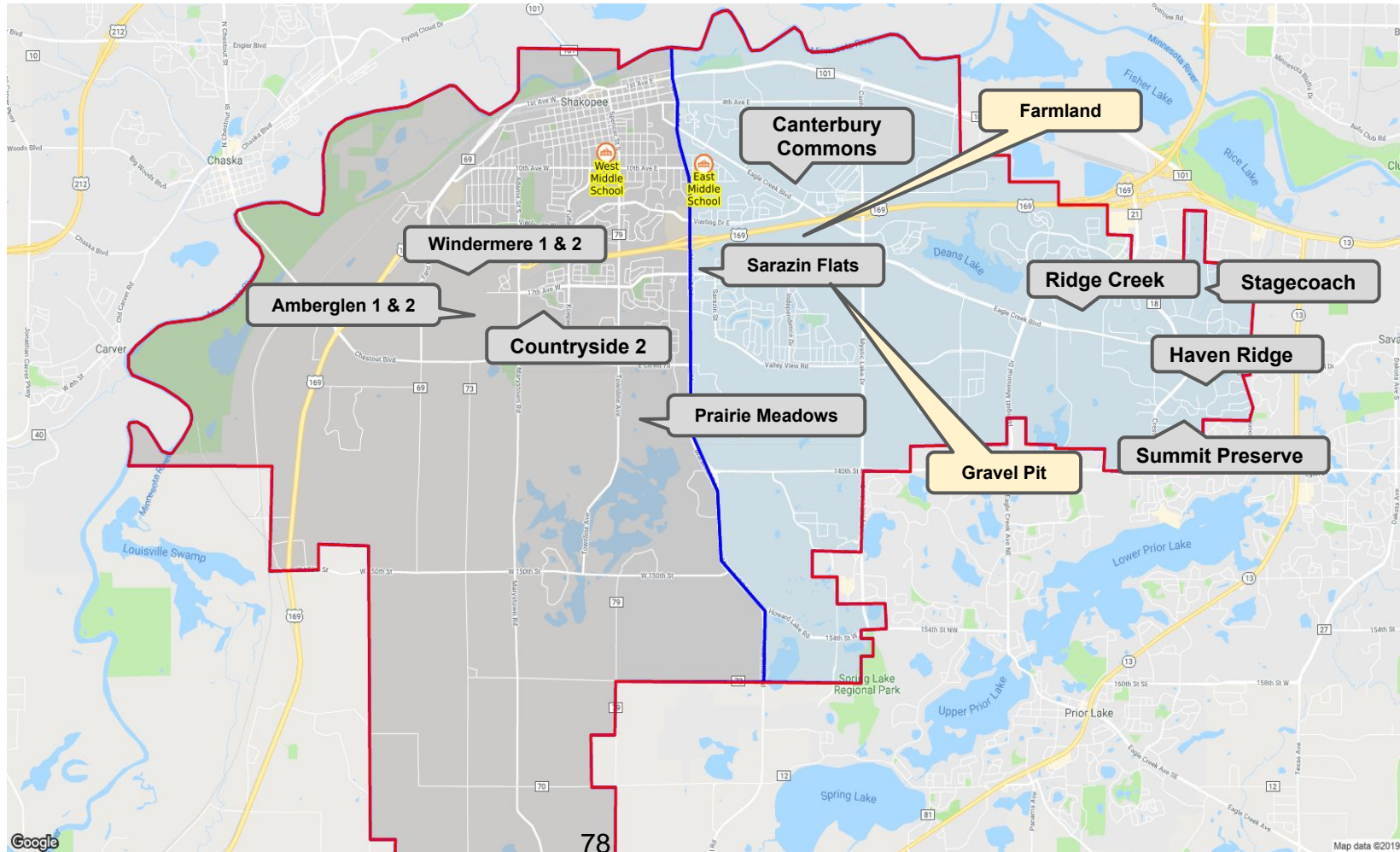
Not a
Proposal
Informational
purposes

*Marschall
Road*



Not a
Proposal
Informational
purposes

*Marschall
Road*



Marschall Road (Not a proposal) - Statistics

	Total	Capacity	% Capacity	Open Seats	New Devel	Projected	% Capacity	Proj Open	% F/R	%SpEd	% EL
East	961	1044	92%	83	111	1072	103%	-28	32%	15%	6%
West	858	1067	80%	209	56	914	86%	153	45%	19%	8%
								Range	13%	4%	2%

Projected school changes

	5	6	7
East	17	29	49
West	135	132	149

Projected grade 5 Middle Schools

Grade 5	East	West
Eagle Creek	86	45
Jackson	42	84
Red Oak	90	2
Sun Path	78	15
Sweeney	7	109
Total	303	255

Marschall Road (Not a proposal) - Statistics - multi-year projections

(Marschall Road)

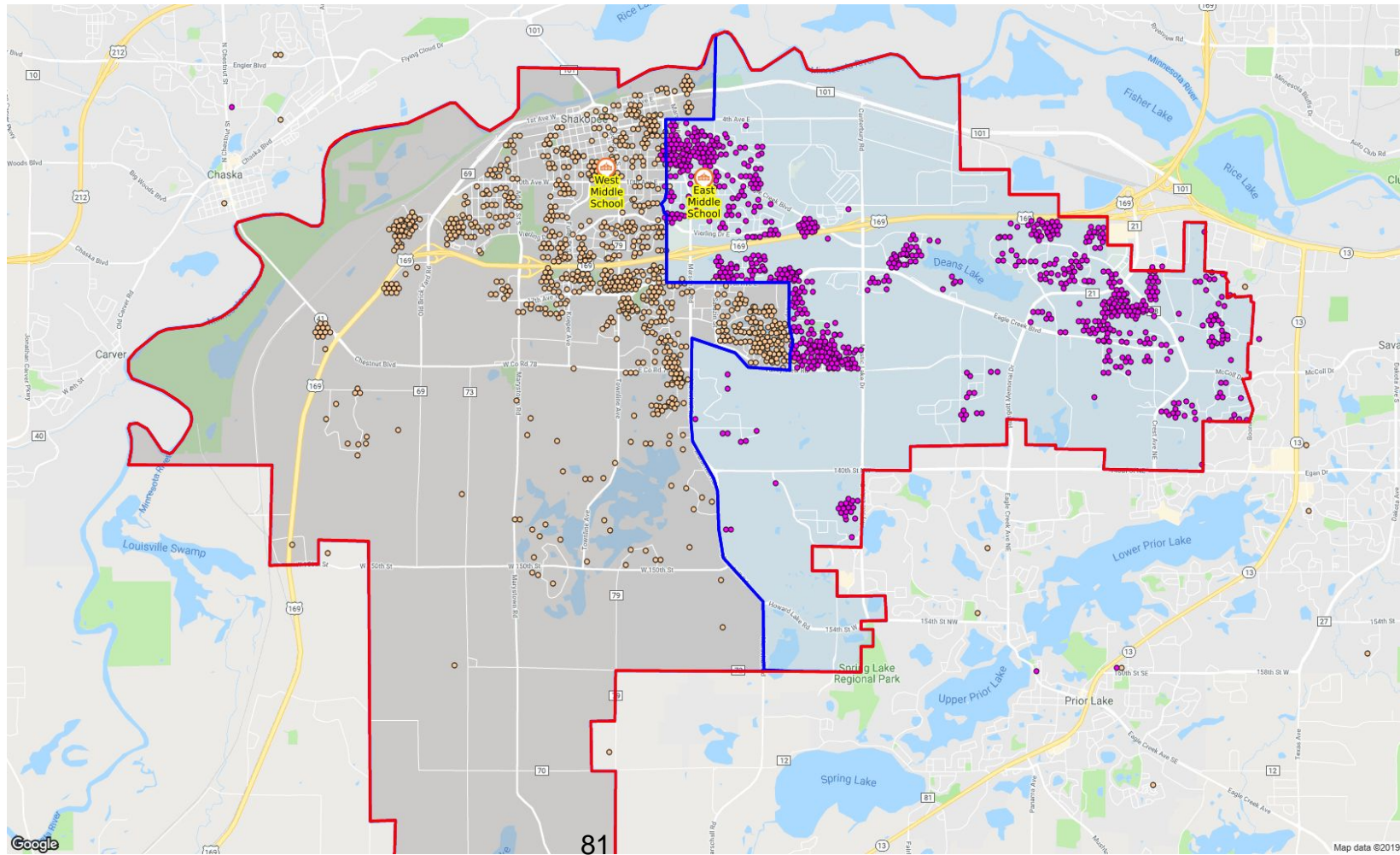
	Kdg	1st	2nd	3rd	4th	5th	Total
East MS	265	295	296	297	296	303	1752
West MS	249	257	270	240	273	255	1544
Total	514	552	566	537	569	558	3296

East	6th	7th	8th	Total
Year 1: 20-21	303	316	342	961
Year 2: 21-22	296	303	316	915
Year 3: 22-23	297	296	303	896
Year 4: 23-24	296	297	296	889
Year 5: 24-25	295	296	297	888
Year 6: 25-26	265	295	296	856

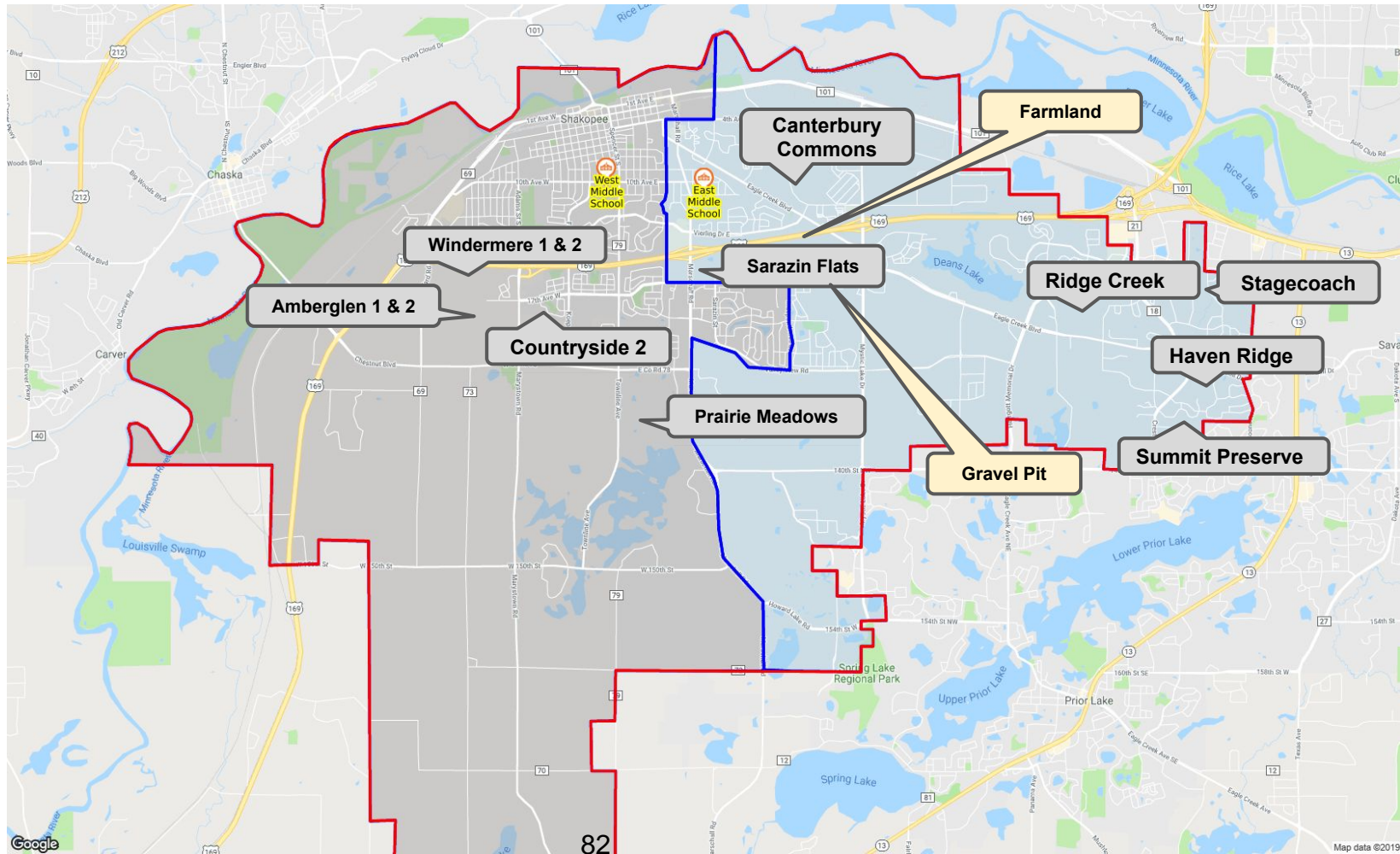
West	6th	7th	8th	Total
Y1: 20-21	255	300	303	858
Y2: 21-22	273	255	300	828
Y3: 22-23	240	273	255	768
Y4: 23-24	270	240	273	783
Y5: 24-25	257	270	240	767
Y6: 25-26	249	257	270	776

Difference	
Year 1	-103
Year 2	-87
Year 3	-128
Year 4	-106
Year 5	-121
Year 6	-80

#106



#106



#106 Scenario - Statistics

# 1 0 6		Total	Capacity	% Capacity	Open Seats	New Devel	Projected	% Capacity	Proj Open		% F/R	%SpEd	% EL
	East	877	1044	84%	167	111	988	95%	56		38%	17%	8%
	West	947	1067	89%	120	56	1003	94%	64		39%	17%	7%
										Range	1%	0%	1%

Projected school changes

	5	6	7
East	62	59	81
West	156	132	150

Projected grade 5 Middle Schools

Grade 5	East	West
Eagle Creek	98	33
Jackson	43	83
Red Oak	80	12
Sun Path	44	50
Sweeney	15	105
Total	280	283

#106 Scenario - multi-year projections

#106

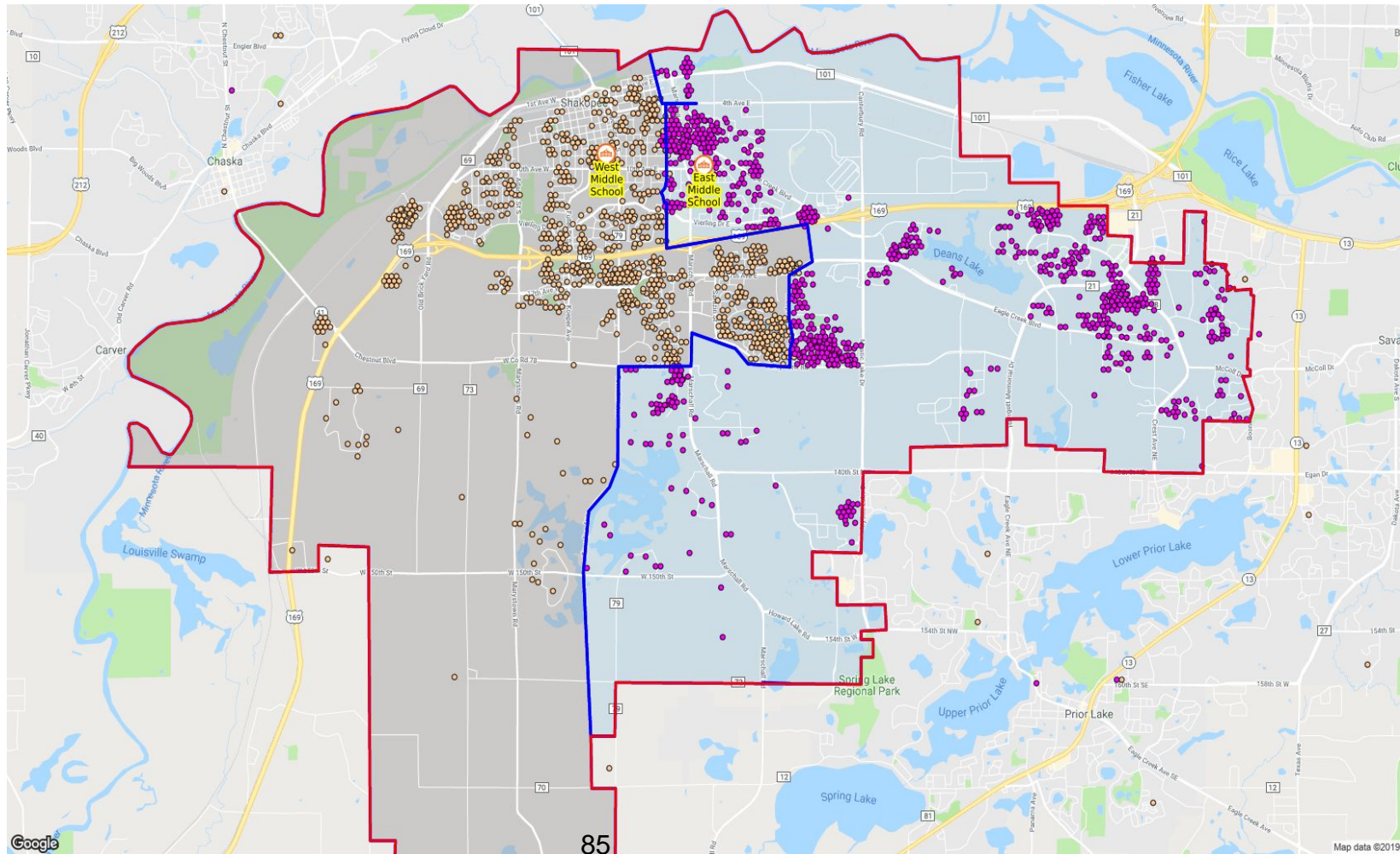
	Kdg	1st	2nd	3rd	4th	5th	Total
East MS	261	270	294	268	268	280	1641
West MS	252	281	270	269	299	283	1654
Total	513	551	564	537	567	563	3295

East	6th	7th	8th	Total
Year 1: 20-21	280	286	311	877
Year 2: 21-22	268	280	286	834
Year 3: 22-23	268	268	280	816
Year 4: 23-24	294	268	268	830
Year 5: 24-25	270	294	268	832
Year 6: 25-26	261	270	294	825

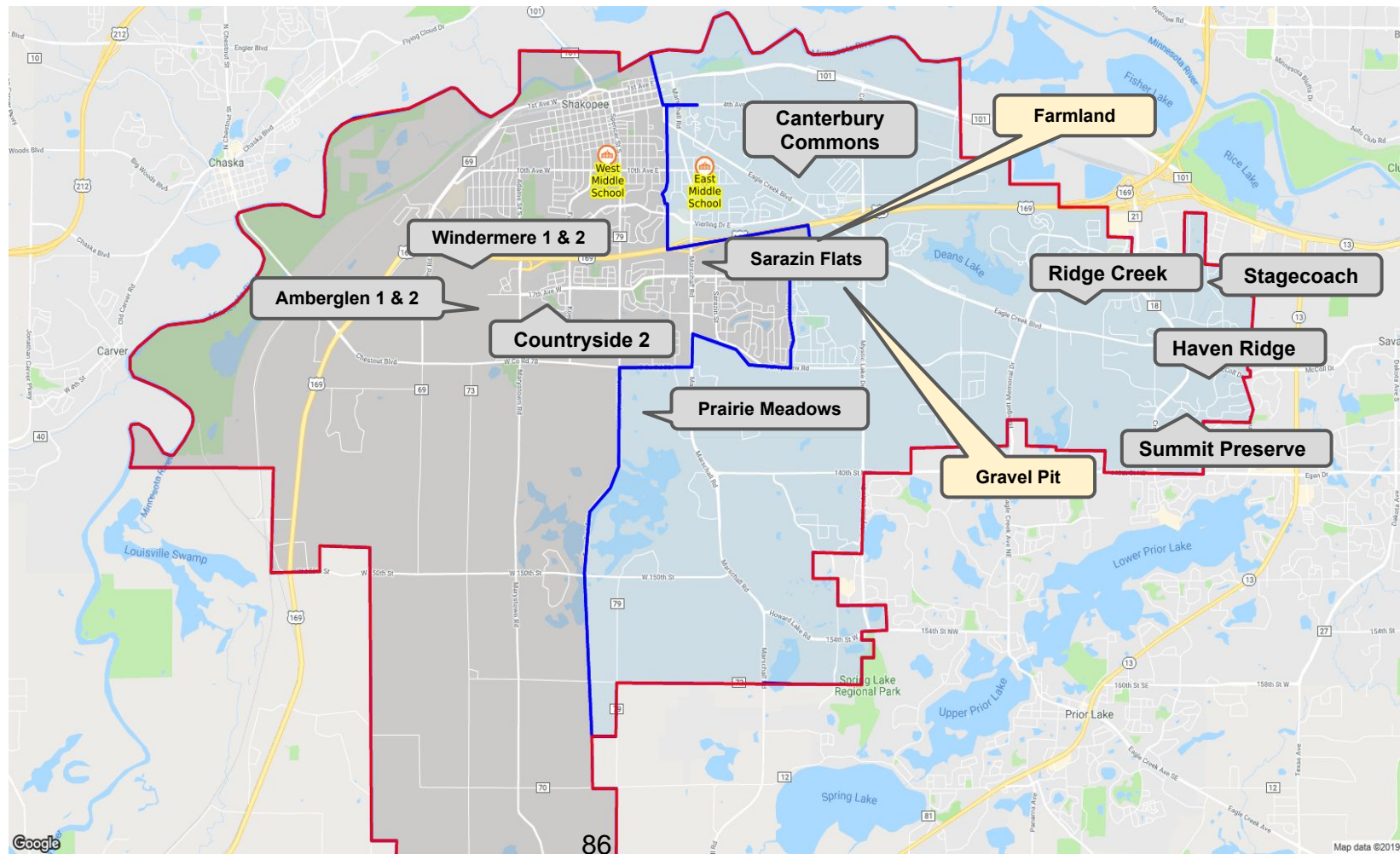
West	6th	7th	8th	Total
Y1: 20-21	283	330	334	947
Y2: 21-22	299	283	330	912
Y3: 22-23	269	299	283	851
Y4: 23-24	270	269	299	838
Y5: 24-25	281	270	269	820
Y6: 25-26	252	281	270	803

Difference	
Year 1	70
Year 2	78
Year 3	35
Year 4	8
Year 5	-12
Year 6	-22

#107



#107



#107 Scenario - Statistics

# 1 0 7		Total	Capacity	% Capacity	Open Seats	New Devel	Projected	% Capacity	Proj Open	% F/R	%SpEd	% EL
	East	893	1044	86%	151	109	1002	96%	42	36%	16%	7%
	West	931	1067	87%	136	58	989	93%	78	40%	18%	7%
		Range									4%	2%

Projected school changes

	5	6	7
East	67	72	88
West	168	153	158

Projected grade 5 Middle Schools

Grade 5	East	West
Eagle Creek	94	37
Jackson	44	82
Red Oak	87	5
Sun Path	32	62
Sweeney	30	90
Total	287	276

#107 - multi-year projections

#107

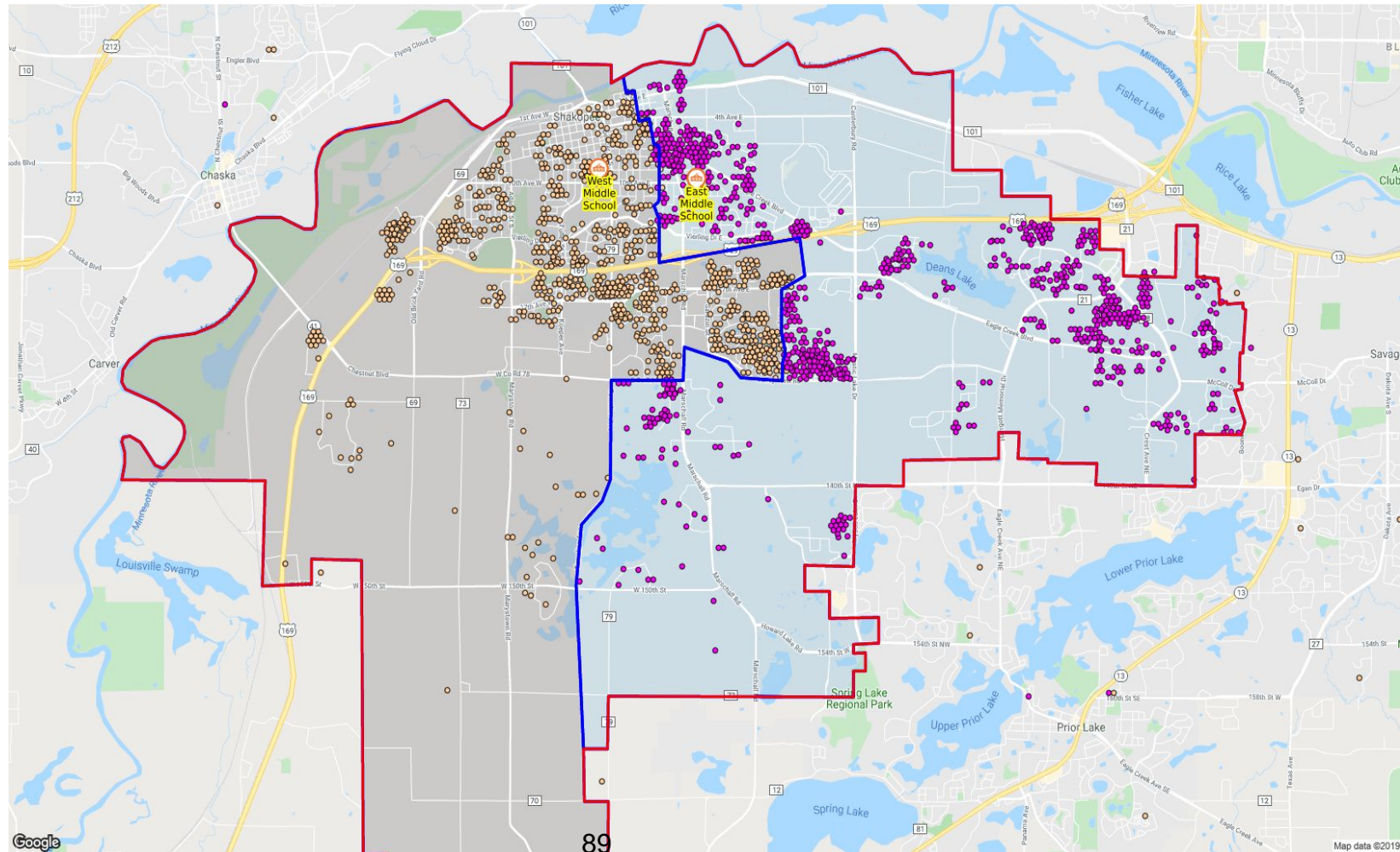
	Kdg	1st	2nd	3rd	4th	5th	Total
East MS	260	270	302	279	278	287	1676
West MS	253	281	264	258	290	276	1622
Total	513	551	566	537	568	563	3298

East	6th	7th	8th	Total
Year 1: 20-21	287	294	312	893
Year 2: 21-22	278	287	294	859
Year 3: 22-23	279	278	287	844
Year 4: 23-24	302	279	278	859
Year 5: 24-25	270	302	279	851
Year 6: 25-26	260	270	302	832

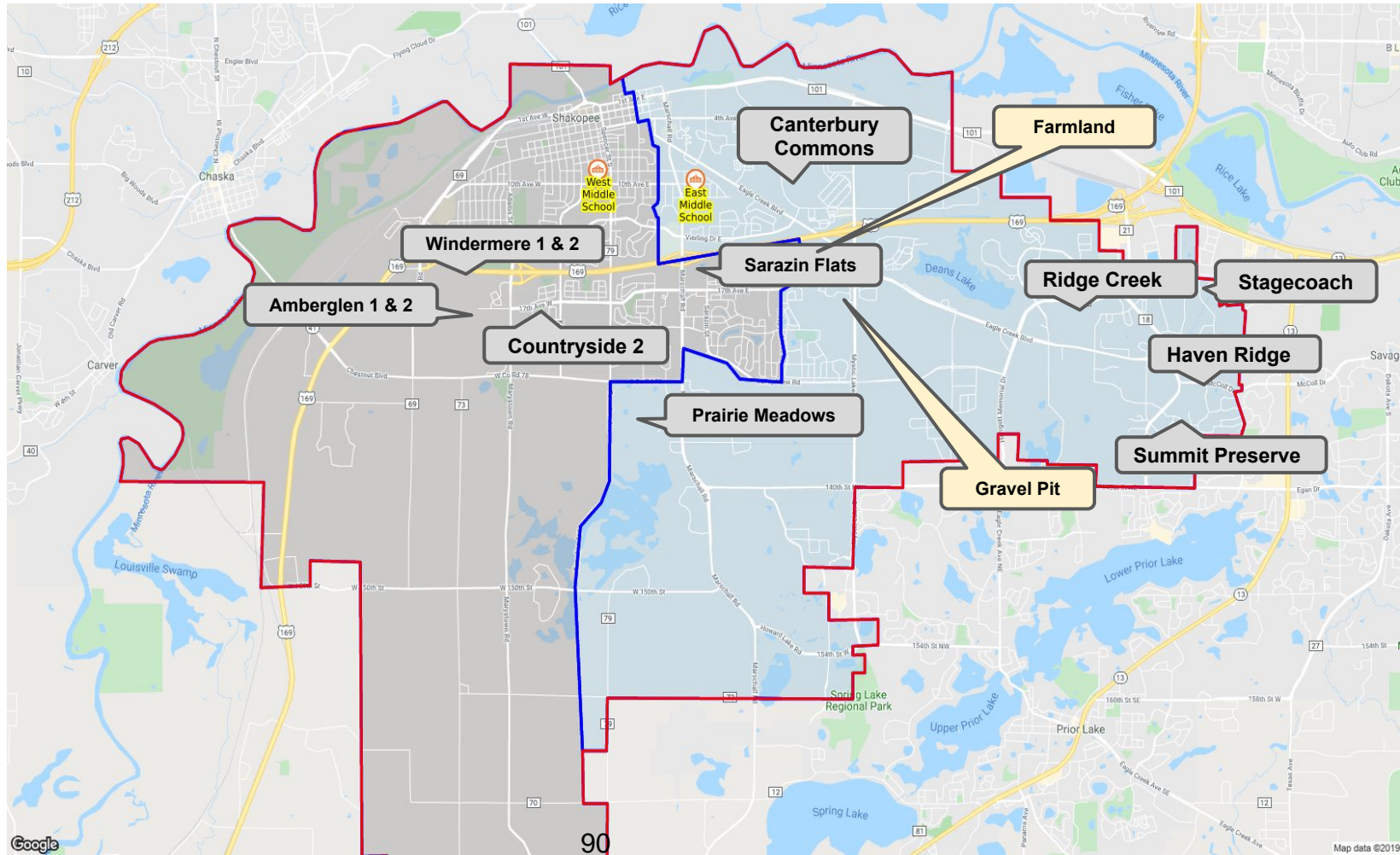
West	6th	7th	8th	Total
Y1: 20-21	276	322	333	931
Y2: 21-22	290	276	322	888
Y3: 22-23	258	290	276	824
Y4: 23-24	264	258	290	812
Y5: 24-25	281	264	258	803
Y6: 25-26	253	281	264	798

Difference	
Year 1	38
Year 2	29
Year 3	-20
Year 4	-47
Year 5	-48
Year 6	-34

#108



#108



#108 Scenario - Statistics

# 1 0 8		Total	Capacity	% Capacity	Open Seats	New Devel	Projected	% Capacity	Proj Open	% F/R	%SpEd	% EL
	East	904	1044	87%	140	109	1013	97%	31	37%	17%	8%
	West	920	1067	86%	147	58	978	92%	89	39%	18%	7%
										Range	2%	1%

Projected school changes

	5	6	7
East	67	69	84
West	170	154	159

Projected grade 5 Middle Schools

Grade 5	East	West
Eagle Creek	96	35
Jackson	44	82
Red Oak	87	5
Sun Path	32	62
Sweeney	30	90
Total	289	274

#108 Scenario-Multi-Year

#108

	Kdg	1st	2nd	3rd	4th	5th	Total
East MS	269	274	307	282	282	289	1703
West MS	245	279	259	256	287	274	1600
Total	514	553	566	538	569	563	3303

East	6th	7th	8th	Total
Year 1: 20-21	289	298	317	904
Year 2: 21-22	282	289	298	869
Year 3: 22-23	282	282	289	853
Year 4: 23-24	307	282	282	871
Year 5: 24-25	274	307	282	863
Year 6: 25-26	269	274	307	850

West	6th	7th	8th	Total
Y1: 20-21	274	318	328	920
Y2: 21-22	287	274	318	879
Y3: 22-23	256	287	274	817
Y4: 23-24	259	256	287	802
Y5: 24-25	279	259	256	794
Y6: 25-26	245	279	259	783

Difference	
Year 1	16
Year 2	10
Year 3	-36
Year 4	-69
Year 5	-69
Year 6	-67

Comments, Questions.....

Intra-District Transfers... process development

Students are expected to attend the school designated for their attendance area. In evaluating intra-district transfer requests, district administration will take into account the overall, and grade level enrollment.

For discussion and consideration:

- The deadline to request an intra-district transfer for the 2020-21 school year is [insert date] 2020. (Ex: Jan 31, 2020)
- Possible capacity considerations
 - % of building capacity cut-off (ex: 95%)
 - Difference in school population limit (ex: schools within 150 student of each other)
 - Allow until school is within a set amount of its capacity (ex: within 50 of capacity)
- Review requests in totality to ensure school balance is maintained



October 15, 2019

The Shakopee School Board is accepting applications to fill the seat vacated by Reggie Bowerman who is resigning effective December 31, 2019.

At the October 14, 2019 board meeting, the Shakopee School Board approved a motion to begin the process to fill the vacancy. The replacement will serve on the Shakopee School Board for the 2020 calendar year. The person selected to serve could also choose to run as a candidate in the general election in November 2020.

Minnesota statute mandates that applicants meet the following requirements:

- At least 21 years of age
- U.S. Citizen and eligible to vote
- Resident of School District 720 for at least 30 days
- No record of criminal sexual misconduct for which registration is required

Minnesota statute also mandates that candidates have a conflict of interest if you are a board member and:

- Expect to make over \$8,000 as an employee of the district in any fiscal year, or
- Have a personal financial interest in the sale, lease or contract with the district (there are exceptions), or
- Hold another elected position, except township board

The Shakopee School Board will accept complete written applications available from and submitted to the Superintendent's Office at 1200 Town Square, Shakopee, MN 55379. The deadline to submit applications is 4:30 p.m. on December 6, 2019. The board will then screen the applications through January 3, 2020. The School Board is expected to select a replacement at its January 6, 2020 meeting. Once selected, there is a 30-day waiting period prior to final appointment to the Shakopee School Board made on February 10, 2020.

Please call the Superintendent's Office at 952-496-5002 if you have any questions.



2019 APPLICATION FOR SCHOOL BOARD MEMBERSHIP

Applicant Information			
Applicant's Last Name	First Name	Middle Initial	Telephone H: W:
Applicant's Address	City	Zip Code	E-mail Address

Requirements to Hold Office
<ul style="list-style-type: none"> ➤ At least 21 years of age ➤ U.S. citizen and eligible to vote ➤ Resident of School District 720 for at least 30 days ➤ No record of criminal sexual misconduct for which registration is required
<p>I verify that I meet these requirements:</p> <p>_____</p> <p>Signature Date</p>

Return completed application, along with a copy of your Minnesota driver's license, by 4:30 p.m. on December 6, 2019 to:

Shakopee Public Schools
 Superintendent's Office
 1200 Town Square
 Shakopee, MN 55379
 Phone: (952) 496-5002

Please provide 2 references who could provide information on your ability to serve on the Shakopee Board of Education.

Name	Address
Phone	Relationship
Name	Address
Phone	Relationship

2019 APPLICATION FOR SCHOOL BOARD MEMBERSHIP

To be completed by applicant (attach separate sheet of paper, if necessary)

Why would you like to serve on the Shakopee School Board?

Please describe your background and experiences with community involvement. How would these serve you as a board member?

This appointment is for the 2020 calendar year. What are your personal goals for this term? Do you envision any of them to take longer than this term to achieve?

2019 APPLICATION FOR SCHOOL BOARD MEMBERSHIP

To be completed by applicant (attach separate sheet of paper if necessary)

How do you view the role of the school board and your role as a board member? What would your role be in working with the superintendent?

The school board meets on the second and fourth Monday of every month at 6:00 p.m. In addition, there are meetings scheduled, committee assignments and special events to attend that may be held during the day or in the evening. Will you be able to meet this schedule and time commitment? Why or why not.

Describe how you have demonstrated advocacy for public education locally and/or statewide.