

# SHAKOPEE PUBLIC SCHOOLS



SCHOOL BOARD AGENDA



Independent School District 720 – Shakopee Public Schools  
Shakopee Public Schools District Office Board Room, 1200 Town Square, Shakopee, MN  
55379

May 22, 2017  
6:00 PM

#### Board of Education

1. 6:00PM - CALL TO ORDER AND ROLL CALL - CHAIR SWANSON
2. Consideration of Agenda as presented.
  2. 1. Discussion regarding Attendance Areas for the 2018-19 School Year 3  
Time: 90 minutes
3. Other
4. UPCOMING MEETINGS AND IMPORTANT DATES
  - May 25, 2017 Students' Last Day of School
  - May 26, 2017 Teachers' Last Work Day
  - May 27, 2017 Shakopee High School Commencement 6:00PM  
held at Grace Church, Eden Prairie
  - May 30, 2017 School Board Finance Committee Meeting 5:00PM
  - June 12, 2017 School Board Finance Committee Meeting 5:00PM
  - June 12, 2017 School Board Business Meeting 6:00PM
  - June 13, 2017 Citizens' Financial Advisory Committee Mtg 6:00PM  
District Office Board Room
  - June 26, 2017 School Board Summer Retreat 6:00PM
  - July 10, 2017 School Board Finance Committee Meeting 5:00PM
  - July 10, 2017 School Board Business Meeting 6:00PM
  - July 24, 2017 School Board Learning Session 6:00PM
5. ADJOURNMENT

# School Board Learning Session

May 22, 2017

## 0-5+ year discussion

- Convert 6<sup>th</sup> grade center back to an elementary
- Convert High School to 9<sup>th</sup>-12<sup>th</sup> grades
- Convert Jr. High Schools (7<sup>th</sup> – 9<sup>th</sup>) to Middle Schools (6<sup>th</sup> - 8<sup>th</sup>)
- More recently, plan to move to a Career Academy model across the district
- Current Elementary schools, over capacity, as anticipated.

Current Enrollment as of 5-17-17

	Total	Capacity	% Capacity	New Devel	Projected	% Capacity
Eagle Creek	846	792	107%	40	886	112%
Jackson	871	792	110%	30	901	114%
Red Oak	655	792	83%		655	83%
Sun Path	683	792	86%		683	86%
Sweeney	636	696	91%	75	711	102%
Pearson	682	600	114%		682	114%
East	850	1050	81%	15	865	82%
West	1061	960	111%	40	1101	115%

## Today's Reality

- The 2018-19 Transition plan requires attendance areas be re-drawn.
- The Community needs ongoing communication/information around the process & topic (9-12 transition, 6-8 transition, Pearson, and the addition of the 6<sup>th</sup> elementary school)
- This is a positive situation... our elementary schools will have space to grow, allowing for comfortable movement & without overcrowding.
- Pearson transitions back to its original design as an elementary school.
- These changes while planned for, and positive, are challenging as well. Attachments to current schools are real, and the change will be difficult for some.
- Attendance areas will be developed based on school board parameters.
  - Capacity/balance
  - Student demographics
  - Walking distance per district policy
  - Goal of areas lasting 3-5 years
  - Efficient transportation
  - Growth via new developments
- Middle School areas will incorporate "feeder" elementary schools if possible.

## Process - DRAFT

- School Board establishes attendance area parameters
- Proposed scenarios developed
- School Board selects "best" scenario by DATE \_\_\_\_\_.
- 4 phases of process
  1. Parent Task Force Study & Review
  2. Preliminary – Public input
  3. Intermediate – Public input
  4. Final – School Board
- Parent Task Force Study & Review DATE(S) \_\_\_\_\_.
- Feedback reviewed... scenario updated if necessary.
- Preliminary - Public Listening Session(s) DATE(S) \_\_\_\_\_.
- Feedback reviewed ... scenario updated if necessary.
- Intermediate – Public Listening Session(s) DATE(S) \_\_\_\_\_.
- Feedback reviewed ... scenario updated if necessary.
- Final Approval by School Board DATE \_\_\_\_\_.

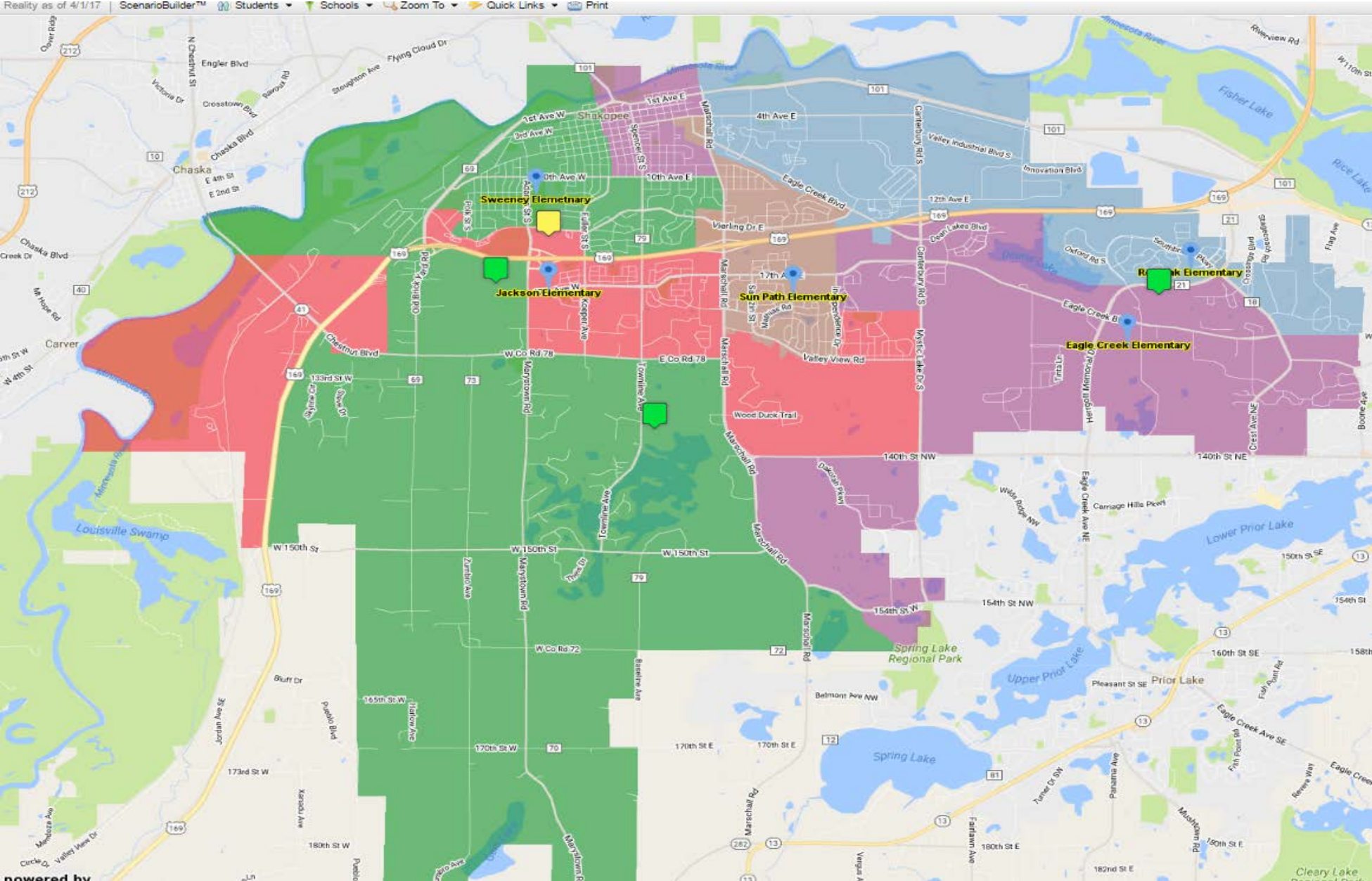
## Proposed criteria/parameters per School Board and prior practice

- Geographic: Walking distance to school per district guidelines/policy
  - Elementary - 0.5 miles, Junior High – 1.0 mile, High School – 2.0 miles
  - Safety considerations per policy.. major roads, high speed roads, sidewalks...
- Demographic Balance
- Transportation: Efficient, effective, cost factors.... Bus company review of impact
- Building capacity
- Recognition of proposed growth/developments
- Feeder schools if possible (Elementary to Middle)
- Last 3-5 years ... better 5-7 years

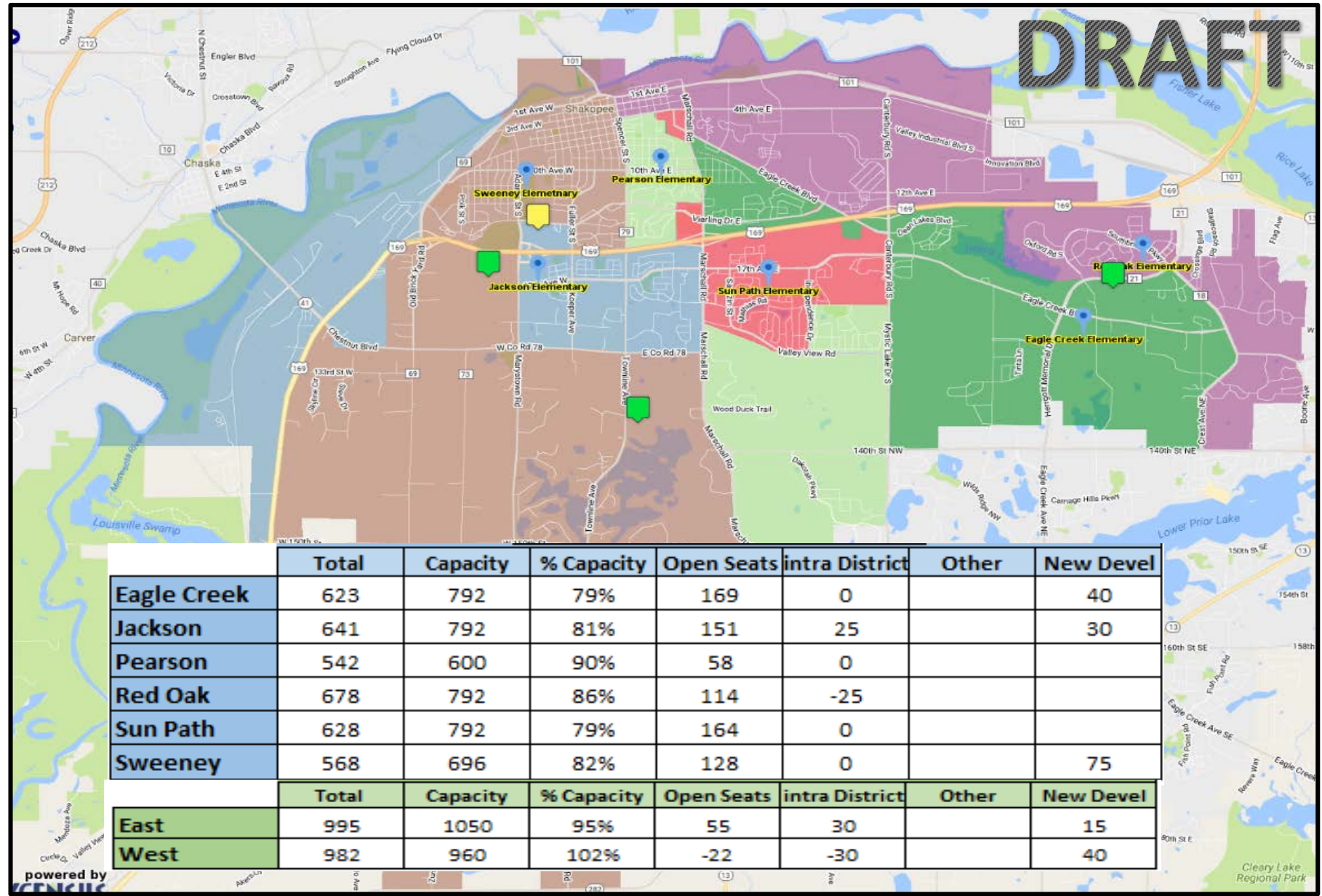
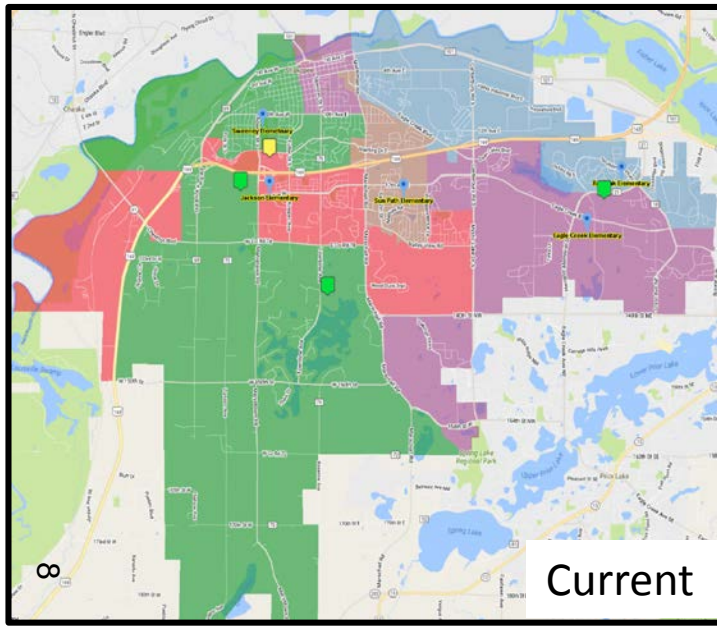
# Governance Direction Needed

- Timeline... when will the attendance areas be finalized?
  - Current thinking November 13 allows for more community input, housing development progress, re-run of the scenario with fall 17-18 enrollment data, and recommended by elementary principals
- Intra-district transfers
  - Allowed? If yes, criteria (daycare, others....)
  - “Batched”
  - “Grand-fathered” in students
  - Current Thinking: Allow daycare requests, grand-father in current requests, “batch” others with specific deadlines
- Process for submitting questions and getting answers
  - Online q & a for questions received by any means
  - Questions documented at listening sessions with responses posted online
  - Individual responses
- School start times? When determined and how?
  - Current thinking: Leave as is as much as possible for existing buildings
  - Pearson start time to be determined

# Current Elementary Attendance Areas

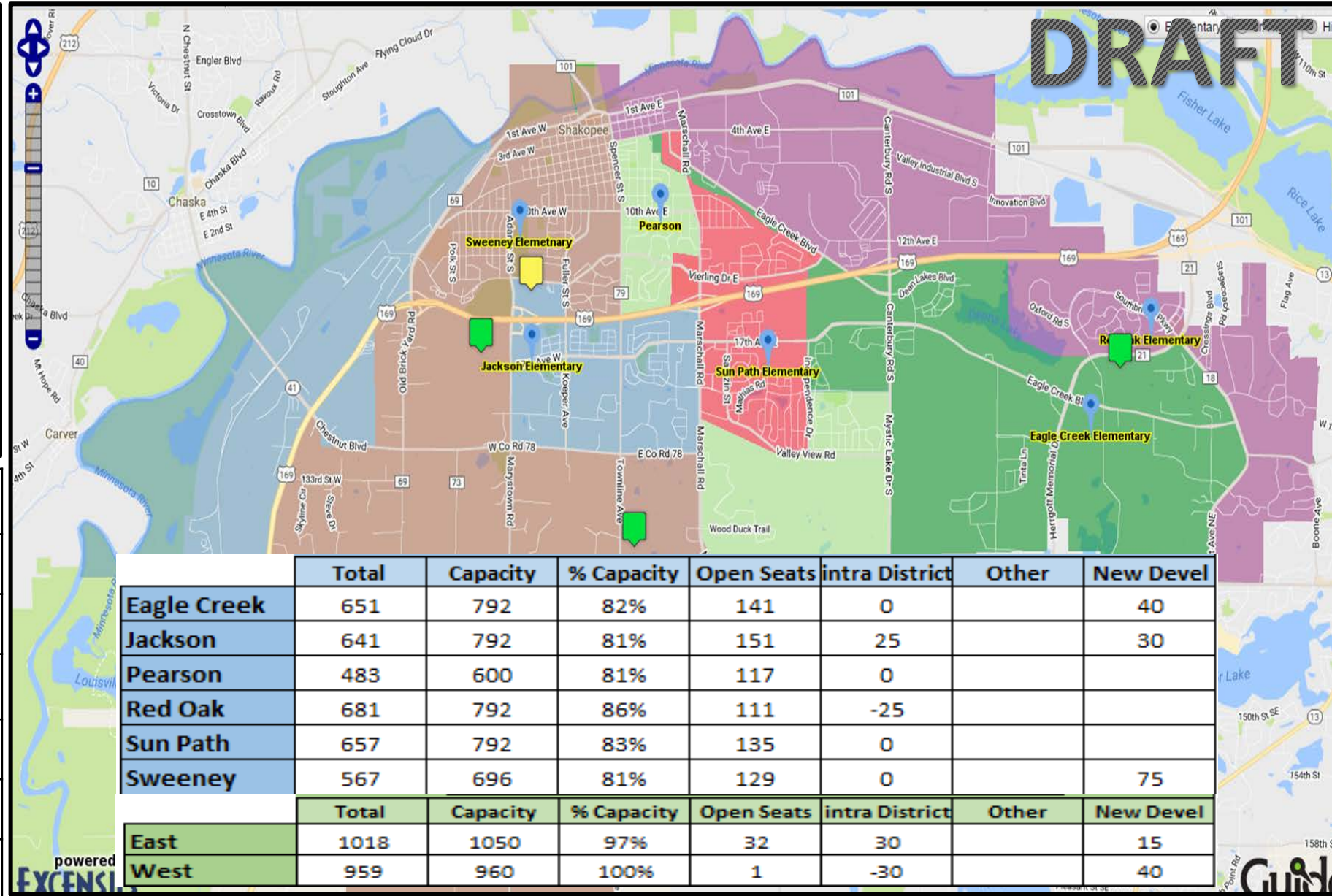
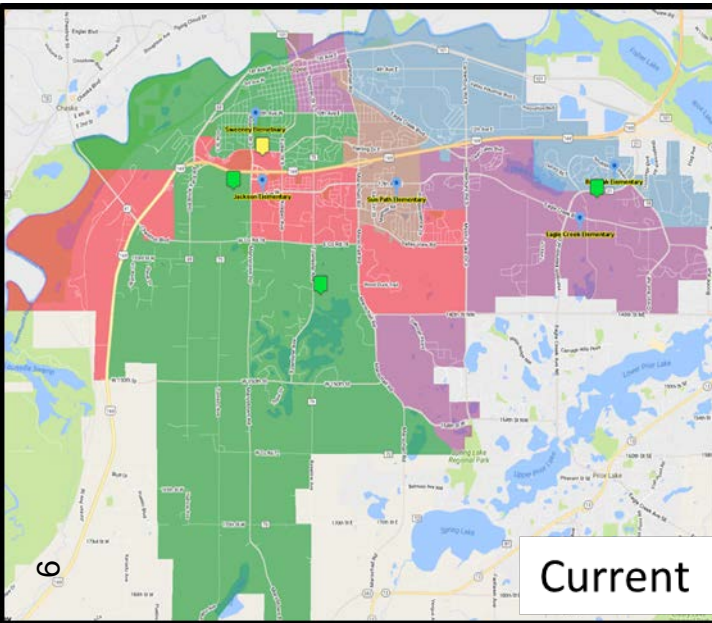


# Scenario 1: DRAFT



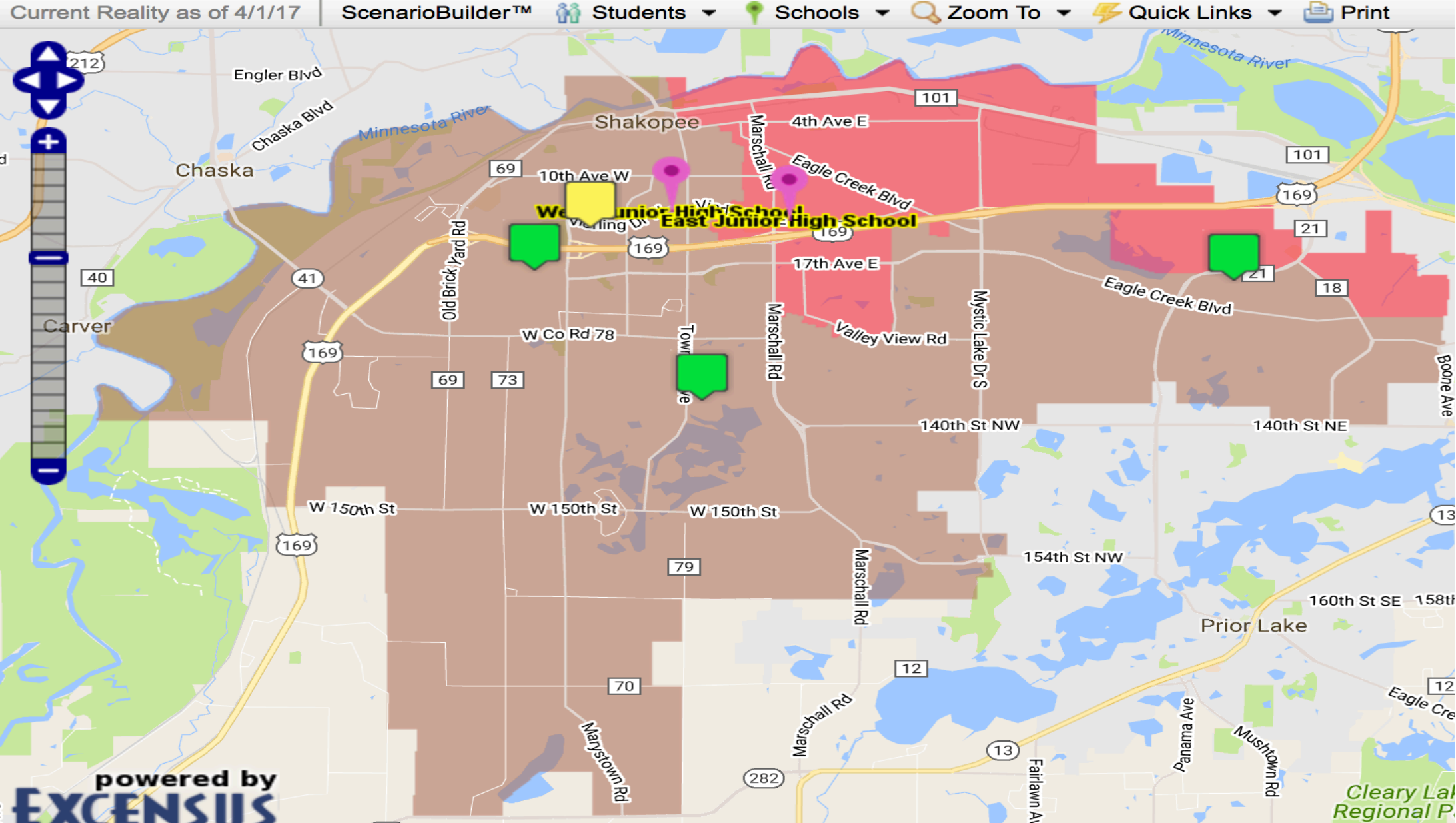
<b>All</b>	1,111/3,680 moves (30%) 772/3,680 moves (21%)*
<b>EC</b>	SP triangle, RO Eagle Creek Blvd.
<b>JA</b>	SW Bonnevista
<b>P</b>	EC Downtown & EC southwest, SW S of 10 <sup>th</sup> , JA E of Independence & JA SE
<b>RO</b>	EC Savage, EC N of 4 <sup>th</sup> Ave.
<b>SP</b>	EC W of Canterbury
<b>SW</b>	EC Downtown, JA small arm area

# Scenario 2: DRAFT

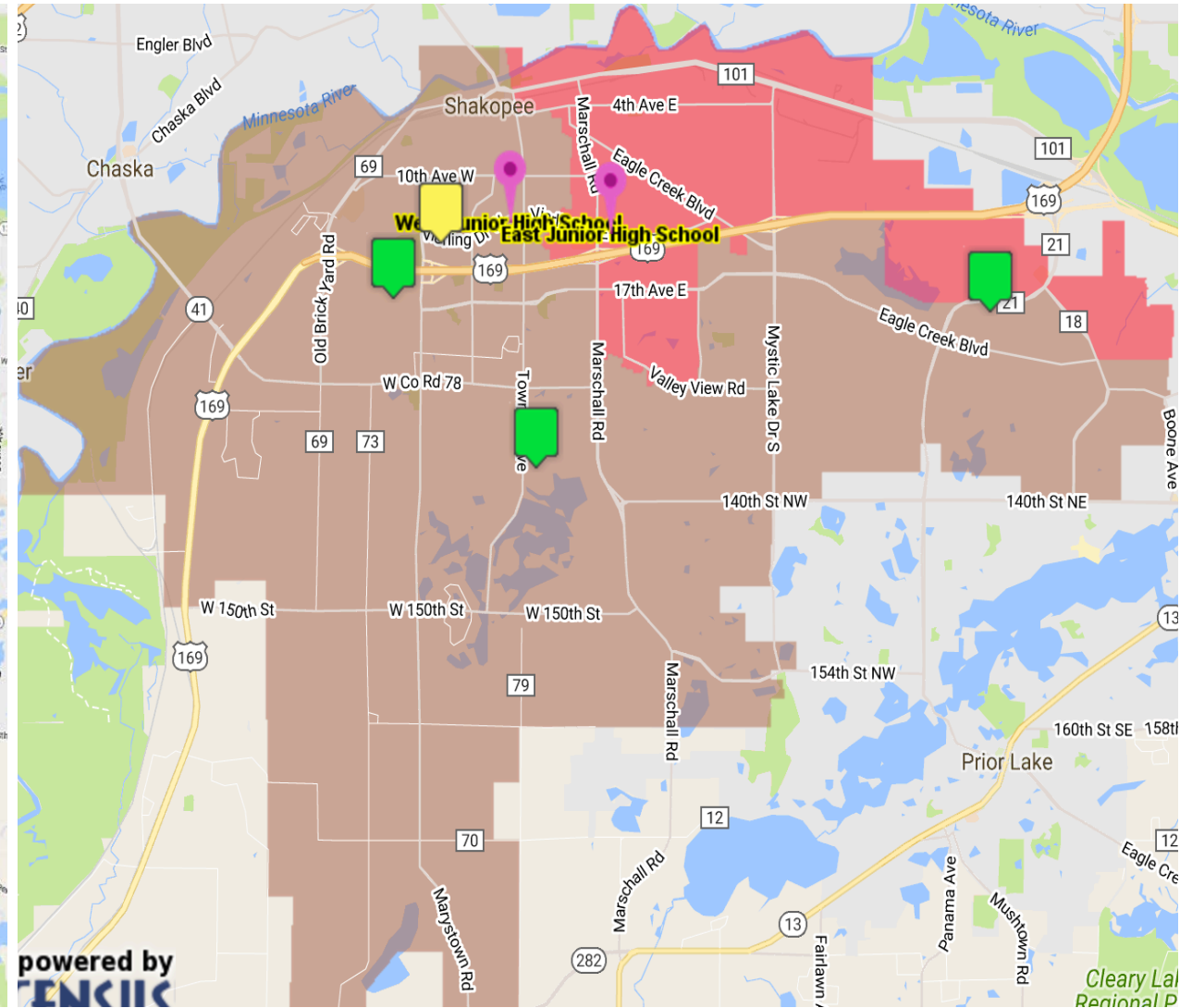
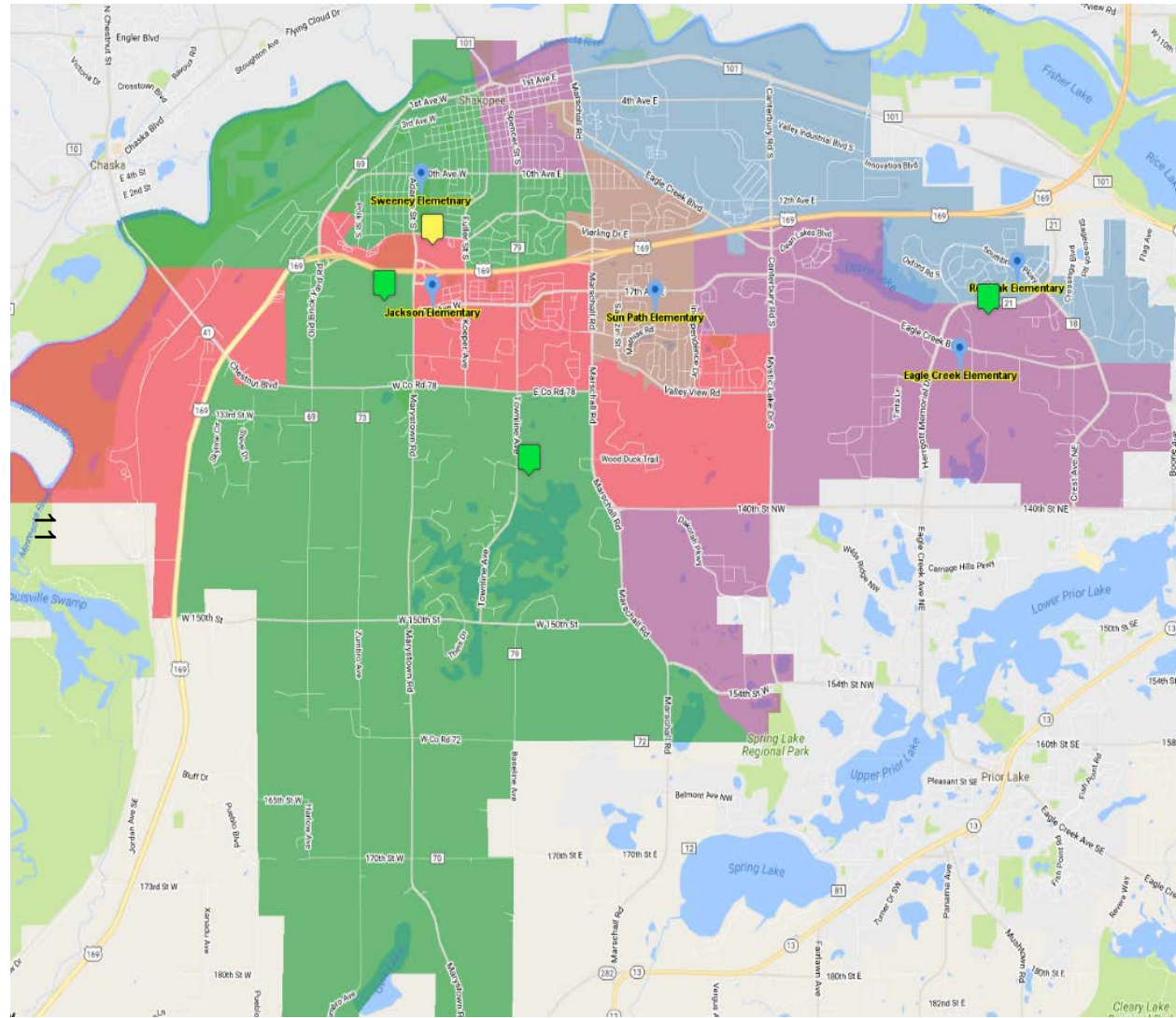


<b>All</b>	914/3,680 moves (25%) 575/3,680 moves (16%)
<b>EC</b>	RO EC Blvd.
<b>JA</b>	SW Bonnevista
<b>P</b>	EC Downtown, SW S of 10 <sup>th</sup> , JA E of Independence & JA SE
<b>RO</b>	EC Savage, EC N of 4 <sup>th</sup> Ave.
<b>SP</b>	Unchanged
<b>SW</b>	EC Downtown, JA small arm area

# Current Jr. High Attendance Areas



# Current Elementary to Jr. High feeder/movement pattern

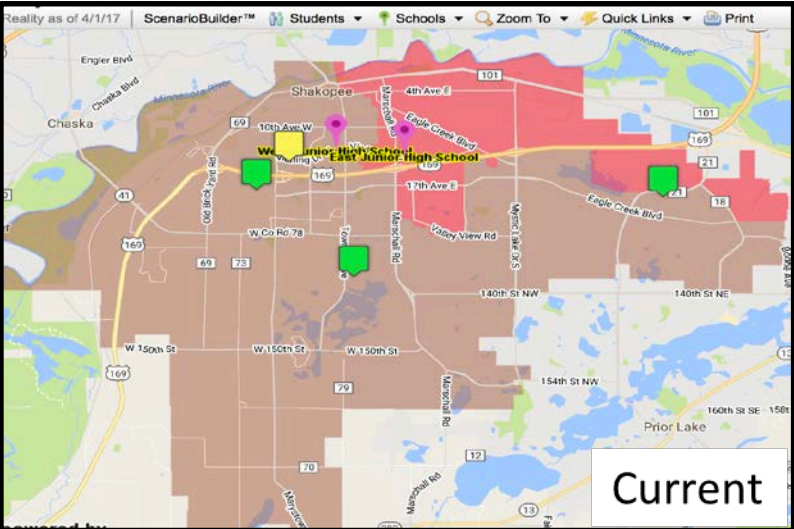


Mainly WJH: EC, JA, SW

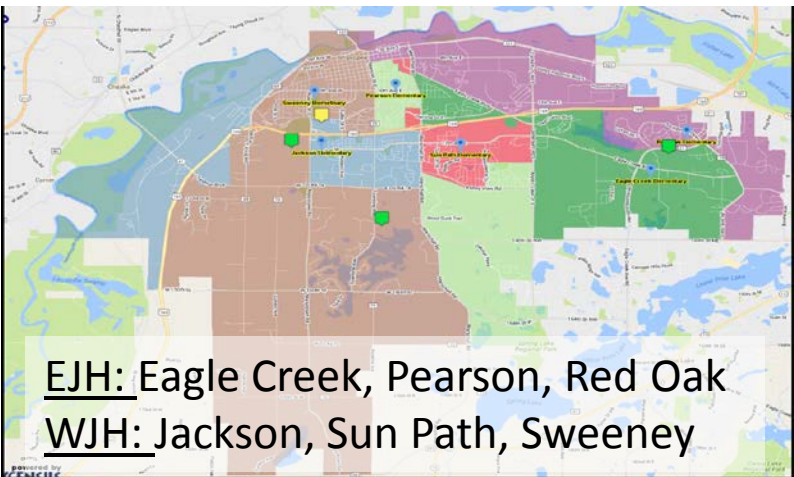
EJH: RO, SP

# Scenario 1: DRAFT

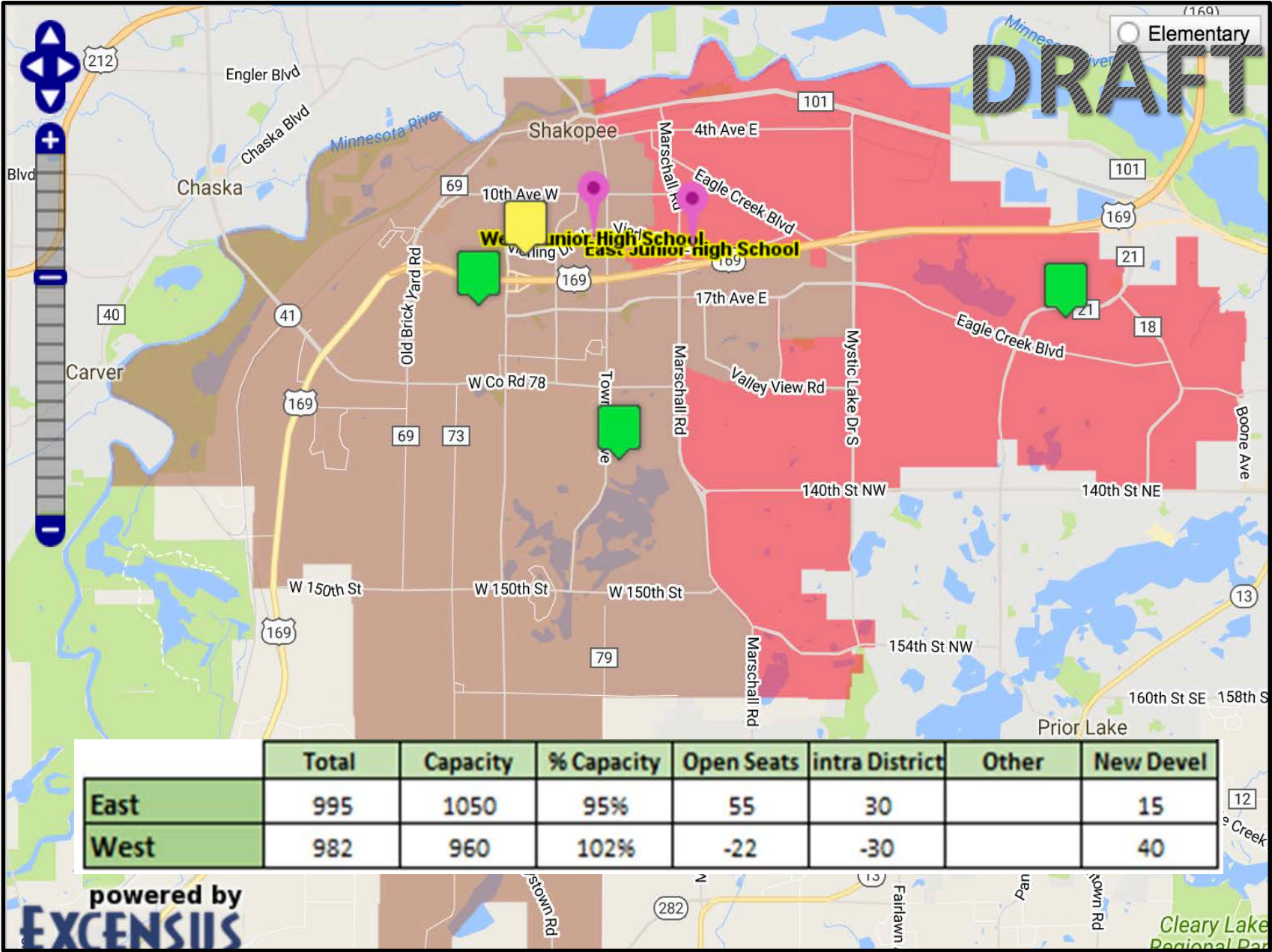
**DRAFT**



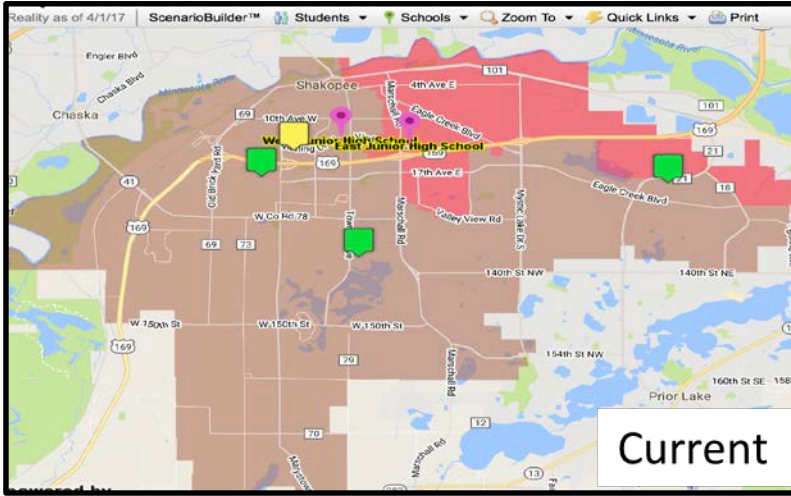
<b>All</b>	222/1,977 moves (11%) 193/1,977 moves (10%)*
<b>EJH</b>	Eagle Creek, Former JA SE, Some SP walkers
<b>WJH</b>	Sun Path, Some P walkers



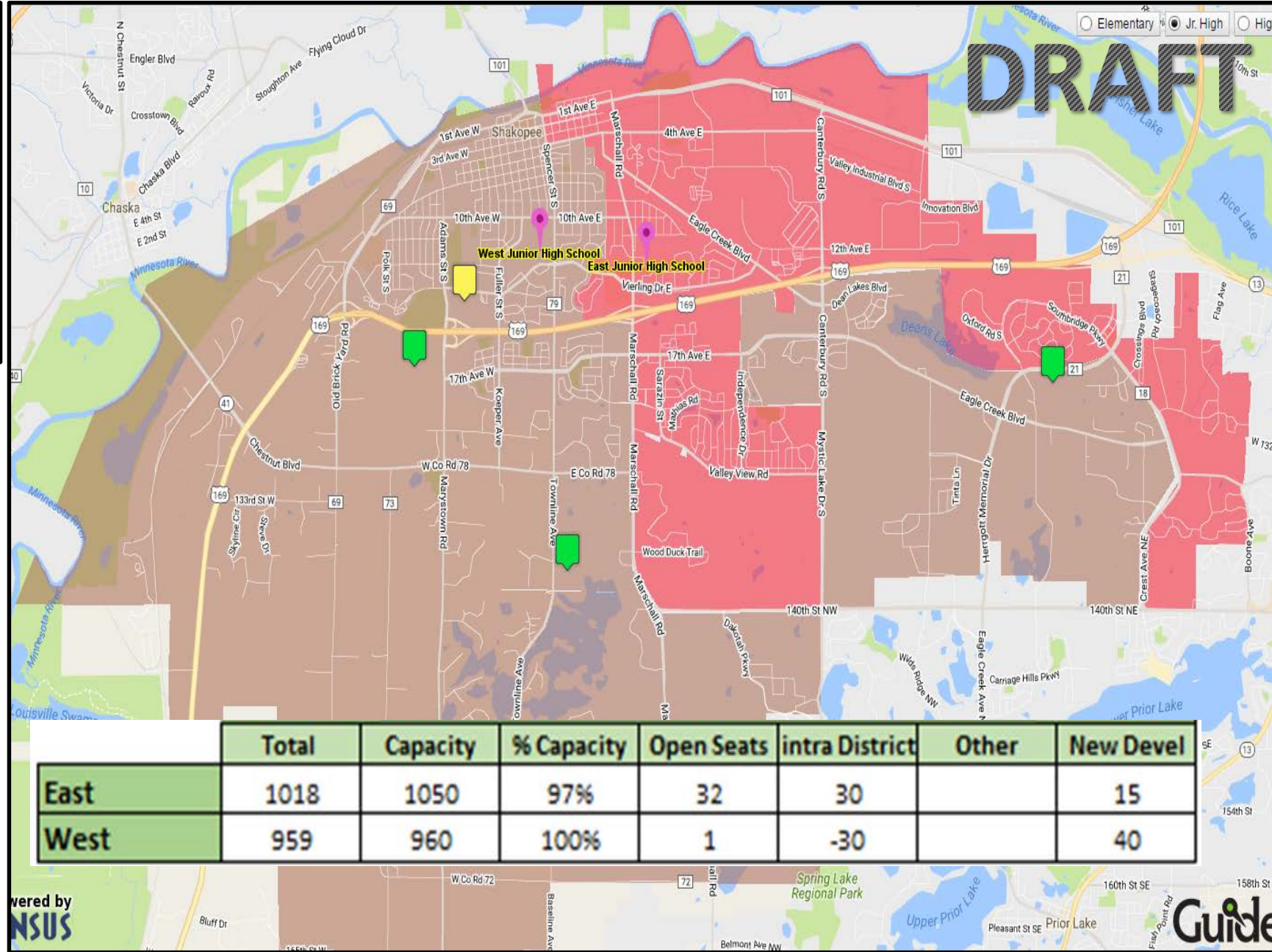
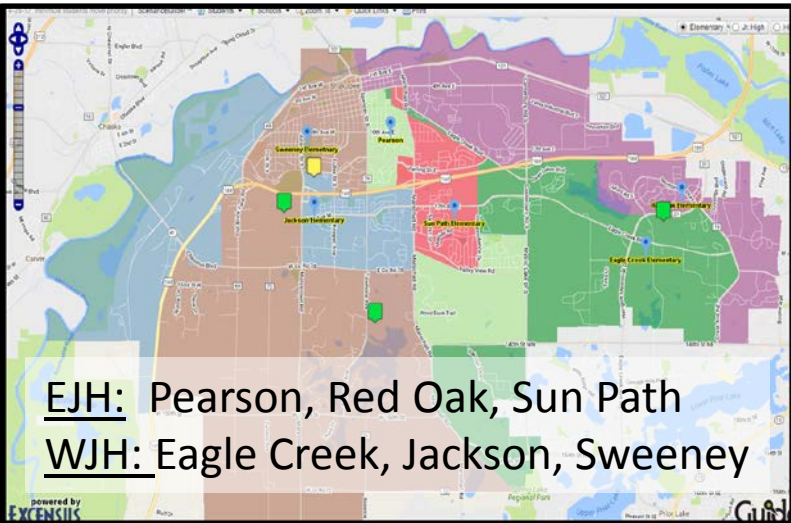
EJH: Eagle Creek, Pearson, Red Oak  
WJH: Jackson, Sun Path, Sweeney



# Scenario 2: DRAFT



All	81/1,977 moves (4%) 52/1,977 moves (3%)*
EJH	EC Savage, Former JA area of P (formerly at WJH)
WJH	Some P walkers



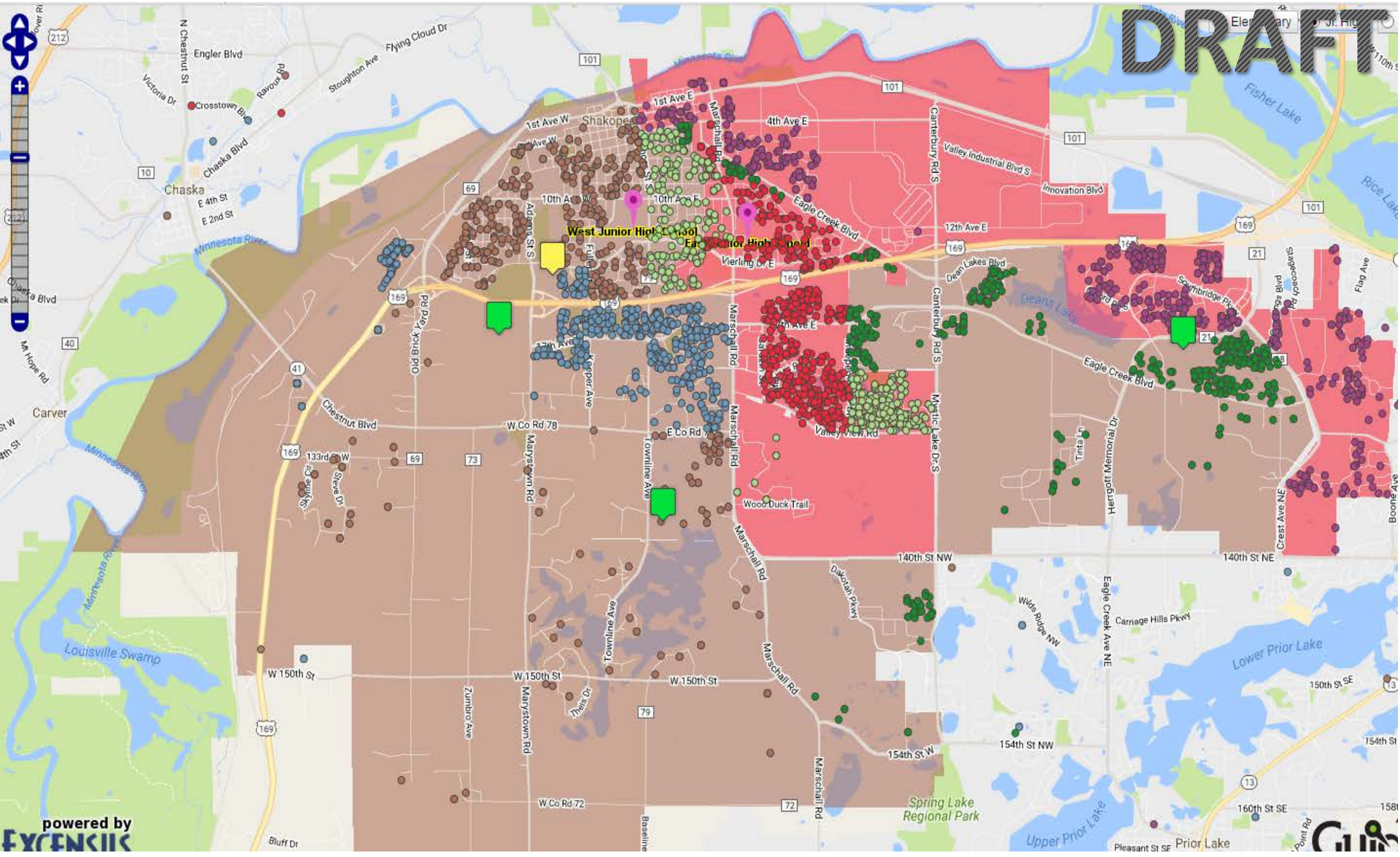
# Junior High – Walking Example that impacts feeder Schools

## East JH

- Pearson
- Red Oak
- Sun Path

## West JH

- Eagle Creek
- Jackson
- Sweeney



# Governance Direction Needed

- Timeline... when will the attendance areas be finalized?
  - Current thinking November 13 allows for more community input, housing development progress, re-run of the scenario with fall 17-18 enrollment data, and recommended by elementary principals
- Intra-district transfers
  - Allowed? If yes, criteria (daycare, others....)
  - “Batched”
  - “Grand-fathered” in students
  - Current Thinking: Allow daycare requests, grand-father in current requests, “batch” others with specific deadlines
- Process for submitting questions and getting answers
  - Online q & a for questions received by any means
  - Questions documented at listening sessions with responses posted online
  - Individual responses
- School start times? When determined and how?
  - Current thinking: Leave as is as much as possible for existing buildings
  - Pearson start time to be determined