

**WAHOO CITY COUNCIL AGENDA**  
**Tuesday, September 9, 2025 - 7:00 PM**  
**Wahoo Public Library, 637 N Maple St, Wahoo, NE 68066**

NOTICE IS HEREBY GIVEN that the Mayor and Council of the City of Wahoo meet on the second and fourth Tuesdays of each month at the Wahoo Public Library, 637 N Maple Street Wahoo, Nebraska, at 7:00 p.m. Notice of special meetings shall be given by posting a notice thereof on the bulletin board in City Hall, U.S. Post Office, and FirstBank of Nebraska, at least 24 hours before the special meeting. All Council meetings are open to the public and the agenda, which is kept continually current, is available for public inspection at the office of the City Clerk at City Hall during normal business hours.

Individuals requiring physical or sensory accommodations, individual interpreter service, Braille, large print or recorded material, please contact the ADA Coordinator at City Hall, 605 North Broadway, Wahoo, Nebraska, 68066, telephone 402-443-3222 as far in advance as possible, but no later than 48 hours before the scheduled event.

{{Name: Agenda Item Name}}

**Pledge of Allegiance**

**Announcement of the Open Meetings Act**

**Call to order and roll call**

**Proclamation**

**Audience comments on items not listed on the agenda**

**Department head reports**

1. Street Superintendent - Joe Wynn

**Consent Agenda**

1. Acceptance of excused absence of Mayor or Council member(s)
2. Approval of the August 26, 2025, minutes of the City Council
3. Approval of Andrew Nelson as a part-time Paramedic
4. Approval of claims

**Public hearing and associated action items**

1. A request for vacation of public ROW: 20' dedicated public way along the north side of Robert's 2nd Addition, Lots 1, 2, & 4 - North of 16th and Elm Street.
  - 1.A. Approval of Ordinance No 2488

2. One and Six Year Road Plan

2.A. Approval of Resolution 2025-09 to approve the one and six year road plan

**Action items not requiring a public hearing**

1. Presentation of proposals received for the City of Wahoo insurance package and recommendation from James Charlesworth Consulting;

1.A. Action to select an insurance provider for the City of Wahoo insurance coverage with a term beginning October 1, 2025, and to allow City Staff to sign any required paperwork

2. Authorization to vacate the south three feet of the alley located in block 6 Wahlstrom's Addition while still retaining a utility easement - Alley between 9th and 10th connecting Sycamore and Walnut Streets.

3. Approval of a tablet use policy to be added to the City of Wahoo Personnel Policy

4. Approval of Resolution No 2025-10 an amendment to the master fee schedule regarding Cemetery Fees and Charges to add extension to foundations from legacy vases.

**Mayor's comments on items not listed on the agenda**

**Council Comments on items not listed on the agenda**

**Adjourn**

**Upcoming planned meeting dates and agenda deadlines**

## **2025 Fall Street & Cemetery Department Report**

**Completed By City Street Superintendent Joe Wynn**

### **Ongoing Maintenance**

ROW Tree Trimming

ROW Mowing

Pothole/Street patching- \*Completed by monthly area inspections & City complaint/concern form.

Inlet cleaning/Inspection drainage study- Continued efforts of focus on getting storm drainage open and regularly maintained. \*Water study Conducted by JEO, City Street Staff & contractor Johnson Services have been cleaning Inlets and Inspecting structures.

Detailed areas like Continental Estates, 12<sup>th</sup>-15<sup>th</sup> pine to Broadway St, Chestnut St – Hackberry from 1<sup>st</sup> to 7<sup>th</sup> St.

Sign Maintenance- Replacing old and outdated street signage

Street Sweeping- spring & fall maintenance sweeping, detailed sweeping before city events and after storms.

Mosquito Control- To date we have sprayed 28 times to date, 6 different communities.

\*Staff will be attending 2025 annual Nebraska Mosquito and Vector Control Association Meeting in North Platte on October 2<sup>nd</sup> & 3<sup>rd</sup>.

Curb grinding for new construction builds- To date we have grinded 13 properties.

Un-improved roads- maintaining, grading and adding aggregate where needed.

\*All un-improved roads Continental Estates, Maple St, City View, C St, Pine St, Commercial Park Rd. are on a monthly maintenance schedule and are also inspected after any heavy rain events for washouts and road hazards. Alleys are also included in this SOP.

Paint stripping- All markings in town have been completed

### **2025 Projects Completed**

5<sup>th</sup> & Walnut St. Intersection project

4<sup>th</sup> & Elm St. Intersection Project

Crack Seal Starting mid-September. See map attached for areas being sealed

## **Cemetery Review**

2025 Storm Damage- Loss of 20+ trees due to ice and storm damage. Loss of power pole that caused electrical surge in shop that fried garage door opener.

We Received a tree grant from Nebraska Forest Service for 8 trees, were going to reach out to the local boy scout troops and our Wahoo Cemetery Committee to have a community building event.

It has been a rough year for maintenance due to all the moisture in the ground and rapid grass growth.

\*Year to date

Burials- 20

Foundations-13

Extensions-6

Fall Clean up dates October 1<sup>st</sup> -October 10<sup>th</sup>

Tree Grant Awarded – Trees for Nebraska Towns 8 trees in total.

## **2025 Fall Street & Cemetery Department Report**

Completed By City Street Superintendent Joe Wynn

### **Ongoing Maintenance**

ROW Tree Trimming

ROW Mowing

Pothole/Street patching- \*Completed by monthly area inspections & City complaint/concern form.

Inlet cleaning/Inspection drainage study- Continued efforts of focus on getting storm drainage open and regularly maintained. \*Water study Conducted by JEO, City Street Staff & contractor Johnson Services have been cleaning Inlets and Inspecting structures.

Detailed areas like Continental Estates, 12<sup>th</sup>-15<sup>th</sup> pine to Broadway St, Chestnut St – Hackberry from 1<sup>st</sup> to 7<sup>th</sup> St.

Sign Maintenance- Replacing old and outdated street signage

Street Sweeping- spring & fall maintenance sweeping, detailed sweeping before city events and after storms.

Mosquito Control- To date we have sprayed 28 times to date, 6 different communities.

\*Staff will be attending 2025 annual Nebraska Mosquito and Vector Control Association Meeting in North Platte on October 2<sup>nd</sup> & 3<sup>rd</sup>.

Curb grinding for new construction builds- To date we have grinded 13 properties.

Un-improved roads- maintaining, grading and adding aggregate where needed.

\*All un-improved roads Continental Estates, Maple St, City View, C St, Pine St, Commercial Park Rd. are on a monthly maintenance schedule and are also inspected after any heavy rain events for washouts and road hazards. Alleys are also included in this SOP.

Paint stripping- All markings in town have been completed

### **2025 Projects Completed**

5<sup>th</sup> & Walnut St. Intersection project

4<sup>th</sup> & Elm St. Intersection Project

Crack Seal Starting mid-September. See map attached for areas being sealed

## **Cemetery Review**

2025 Storm Damage- Loss of 20+ trees due to ice and storm damage. Loss of power pole that caused electrical surge in shop that fried garage door opener.

We Received a tree grant from Nebraska Forest Service for 8 trees, were going to reach out to the local boy scout troops and our Wahoo Cemetery Committee to have a community building event.

It has been a rough year for maintenance due to all the moisture in the ground and rapid grass growth.

\*Year to date

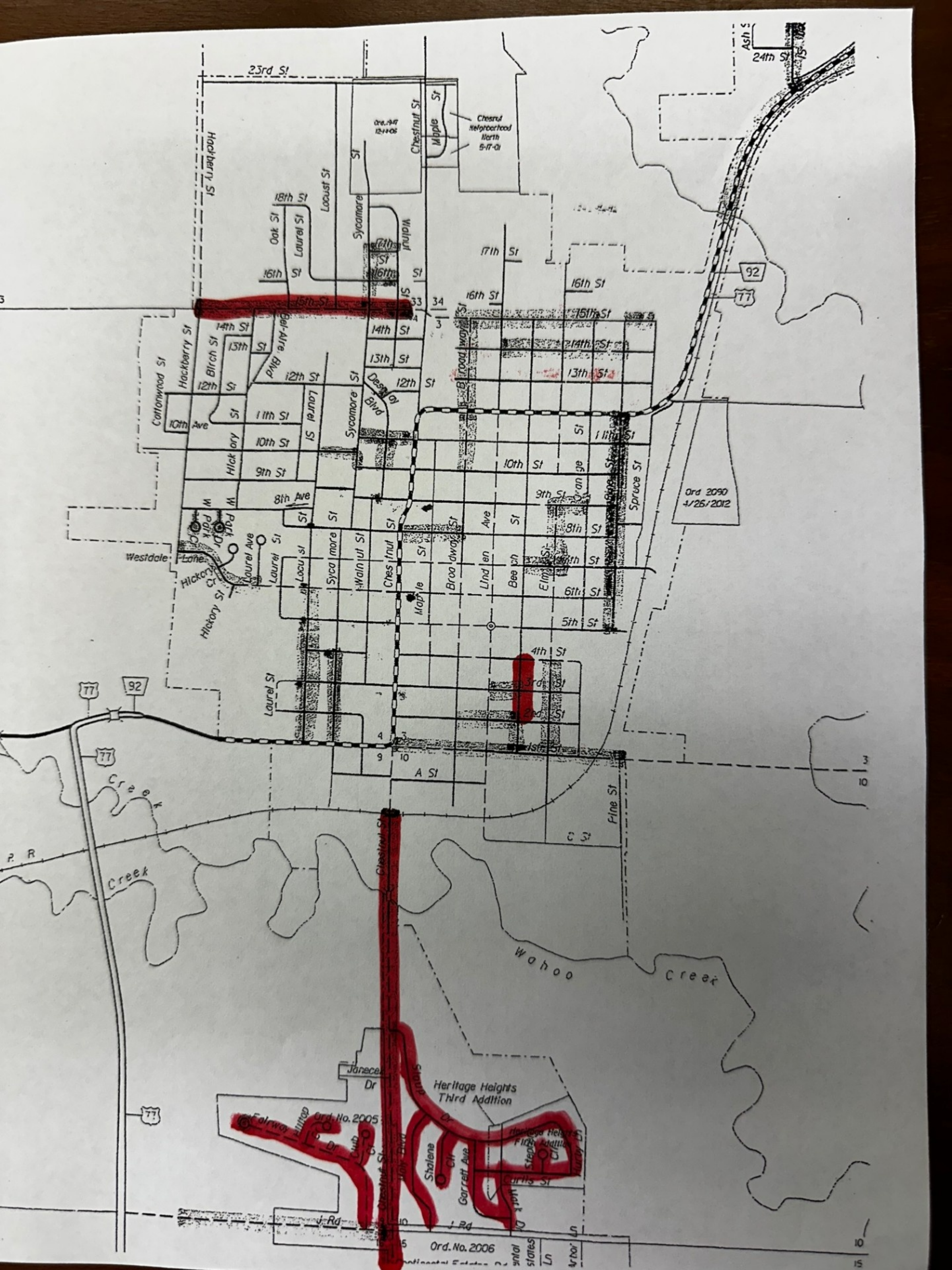
Burials- 20

Foundations-13

Extensions-6

Fall Clean up dates October 1<sup>st</sup> -October 10<sup>th</sup>

Tree Grant Awarded – Trees for Nebraska Towns 8 trees in total.



The Council met in Regular session in the Wahoo Public Library, in compliance with the agenda posted at City Hall, Post Office, and First Bank of Nebraska, and the City of Wahoo website, with each Council member being notified of the agenda prior to the meeting. The meeting was called to order by Mayor Gerald D. Johnson at 7:00 PM and opened with the Pledge of Allegiance. The public was informed of the location of posting of the Open Meetings Law. Roll call was taken with the following Council members: Ryan Ideus: Present, Stuart Krejci: Present, Patrick Nagle: Present, Chris Rappl: Present, Shane Sweet: Present, Carl Warford: Present.

City Council Member Krejci motioned, City Council Member Nagle seconded to approve the consent agenda which included approval of Aug 12, 2025, City Council minutes, and approval of the following claims:

BEN – Benefits \$11,769.62,  
BLD – Baltz, Susan \$400.00, Continental \$360.75, Getzschman \$354.00, Jackson Services \$292.62,  
CC – Union Bank VISA \$710.31,  
KENO – NE Dept of Revenue \$86.71,  
LIB – ARSL \$175.00, Baker & Taylor \$326.19, Center Point \$136.92, Omaha World Harold \$520.00,  
MEM – Ne Library Assoc \$305.00, League of NE Municipalities \$20,091.00,  
MISC – Tyler Tech \$535.00, Wahoo Parks and Rec \$583.55,  
PAY – Payroll \$107,807.32,  
PRO – Bromm, Lindahl \$4,200.00, K2 \$1,000.00,  
PUB – The Enterprise Company \$372.50,  
STR – Diamond Vogel \$388.50, Fastenal \$414.30, National Concrete Cutting \$790.85,  
SUB – Caselle \$1,360.45, Filament \$2,000.00,  
SUP – Bomgaars \$230.11,  
UTL – OPPD \$41.53,  
VEH – Ozzy's Auto \$20.00

Roll call vote Krejci, yes; Nagle, yes; Sweet, yes; Warford, yes; Ideus, yes; Rappl, yes. Motion carried

A Public Hearing regarding an application to the NE Dept of Econ Development for a CDBG application, for a public planning grant for the development of a Downtown Revitalization Master Plan was opened at 7:10pm. Tom Bliss from SENDD commented on the grant application. There were no other comments from the public.

City Council Member Warford motioned, City Council Member Rappl seconded to close the public meeting at 7:17pm. Roll call vote Warford, yes; Rappl, yes; Krejci, yes; Nagle, yes; Ideus, yes; Sweet, yes. Motion carried.

City Council Member Warford motioned, City Council Member Nagle seconded to approve Resolution No. 2025-09 to authorize to submission of the grant application. Roll call vote Warford, yes; Nagle, yes; Sweet, yes; Krejci, yes; Ideus, yes; Rappl, yes. Motion carried.

Bliss also asked for directions regarding the incoming survey that had been sent out previously. The Council directed him to do another mailing.

A public hearing regarding approval of the final plat of replats of Lots 7-10 and Part of Lot 11 Block 126 County Addition - North side of N Orange and E 8th Street was opened at 7:29pm. There were no comments.

City Council Member Warford motioned, City Council Member Ideus seconded to close the public hearing at 7:30pm. Roll call vote Warford, yes; Ideus, yes; Krejci, yes; Nagle, yes; Rappl, yes; Sweet, yes. Motion carried.

City Council Member Krejci motioned, City Council Member Warford seconded to approve the final plat. Roll call vote Krejci, yes; Warford, yes; Ideus, yes; Sweet, yes, Rappl, yes; Nagle, yes. Motion carried.

A public hearing regarding approval of the final plat for a Replat of lot 4, Robert's 3rd Addition and Lot 3, Robert's 3rd Addition 2nd Replat. - North of N Elm and E 16<sup>th</sup> was opened at 7:31pm. There were no comments from the public.

City Council Member Ideus motioned, City Council Member Sweet seconded to close the public hearing at 7:33pm. Roll call vote Ideus, yes; Sweet, yes; Warford, yes; Rappl, yes; Krejci, yes; Nagle, yes. Motion carried.

City Council Member Ideus motioned, City Council Member Sweet seconded to approve the final plat or a Replat of lot 4, Robert's 3rd Addition and Lot 3, Robert's 3rd Addition 2nd Replat. Roll call vote Ideus, yes; Sweet, yes; Warford, yes; Rappl, yes; Krejci, yes; Nagle, yes. Motion carried.

City Council Member Krejci motioned, City Council Member Rappl seconded to approve the Blight and Substandard Determination Study by Ray Consulting Services, LLC for Wahoo Highway 92 East Industrial Area. Roll call vote Krejci, yes; Rappl, yes; Nagle, yes; Sweet, yes; Warford, yes; Ideus, yes. Motion carried.

City Council Member Krejci motioned, City Council Member Ideus seconded to approve FHU Consulting to complete updated traffic study and option analysis for roads/access points to Highway 77/92 Expressway near 15th Street intersection. Roll call vote Krejci, yes; Ideus, yes; Sweet, yes; Warford, yes; Rappl, yes; Nagle, yes. Motion carried.

City Council Member Warford motioned, City Council Member Krejci seconded to approve the new proposed pay scale for City of Wahoo and Wahoo Utilities Employees following 2025 Salary Survey. Krejci, yes; Rappl, yes; Warford, yes; Ideus, yes; Sweet, yes; Nagle, abstain.

The meeting was adjourned at 7:49pm.

Approved:

---

Christina Fasel, City Clerk

---

Gerald D. Johnson, Mayor

GL Account and Title	Vendor Name	Description	Invoice Number	Invoice Date	Net Invoice Amount	Amount Paid
<b>GENERAL FUND</b>						
<b>101-01-550.310 MATERIALS &amp; SUPPLIES</b>						
101-01-550.310 MATERIALS & SUPPLIES	Quill Corporation	copy paper, highlighters	45202985	08/06/2025	43.98	.00
Total 101-01-550.310 MATERIALS & SUPPLIES:					43.98	.00
<b>101-01-550.330 PRINTING &amp; PUBLICATION</b>						
101-01-550.330 PRINTING & PUBLICATION	First Edition Printing	1500 window envelopes	12314	09/04/2025	107.70	.00
Total 101-01-550.330 PRINTING & PUBLICATION:					107.70	.00
<b>101-01-550.340 GAS, OIL, FUEL - CAR &amp; EQUIP</b>						
101-01-550.340 GAS, OIL, FUEL - CAR & EQUIP	CITY OF WAHOO	27.497 gal fuel - Aug 2025	37384	09/03/2025	87.99	.00
Total 101-01-550.340 GAS, OIL, FUEL - CAR & EQUIP:					87.99	.00
<b>101-01-550.360 UTILITIES-ELEC./TELE./GARBAGE</b>						
101-01-550.360 UTILITIES-ELEC./TELE./GARBAGE	Verizon Wireless	Acct #783729194-00001 City Admin phone	6121551495	08/20/2025	40.02	.00
101-01-550.360 UTILITIES-ELEC./TELE./GARBAGE	Wahoo Utilities	City Hall Utilities	SEP2025	09/04/2025	1,032.38	.00
101-01-550.360 UTILITIES-ELEC./TELE./GARBAGE	Waste Connections of NE,	009-City Hall	7378218T054	09/01/2025	80.29	.00
101-01-550.360 UTILITIES-ELEC./TELE./GARBAGE	Waste Connections of NE,	017- downtown cans	7378218T054	09/01/2025	49.95	.00
Total 101-01-550.360 UTILITIES-ELEC./TELE./GARBAGE:					1,202.64	.00
<b>101-01-550.410 EDUCATION &amp; TRAINING EXPENSE</b>						
101-01-550.410 EDUCATION & TRAINING EXPENSE	League of Nebraska Municip	2025 Annual Conference registration Harell	92025	09/01/2025	426.00	.00
101-01-550.410 EDUCATION & TRAINING EXPENSE	League of Nebraska Municip	2025 Annual Conference registration Fasel	92025	09/01/2025	150.00	.00
Total 101-01-550.410 EDUCATION & TRAINING EXPENSE:					576.00	.00
<b>101-01-554.630 BUILDING MAINTENANCE</b>						
101-01-554.630 BUILDING MAINTENANCE	Baltz, Susan	2 weeks office cleaning	1SEP25	08/31/2025	400.00	.00
101-01-554.630 BUILDING MAINTENANCE	Jackson Services, Inc.	Soap, Mat, Towles - City Hall	5630908	08/26/2025	139.76	.00
101-01-554.630 BUILDING MAINTENANCE	Jackson Services, Inc.	City Hall Mop and Towels	5635256	09/02/2025	39.49	.00
101-01-554.630 BUILDING MAINTENANCE	Jackson Services, Inc.	City mats	5639730	09/09/2025	90.93	.00
Total 101-01-554.630 BUILDING MAINTENANCE:					670.18	.00
<b>101-01-923.010 CONSULTANTS-ATTORNEYS</b>						
101-01-923.010 CONSULTANTS-ATTORNEYS	Bromm, Lindahl, Freeman-	Kennedy Campus South Hall Project	377	06/09/2025	200.00	.00
101-01-923.010 CONSULTANTS-ATTORNEYS	Bromm, Lindahl, Freeman-	Heistuman Claim	377	06/09/2025	40.00	.00
101-01-923.010 CONSULTANTS-ATTORNEYS	Bromm, Lindahl, Freeman-	Code of Co Jurisdiction	377	06/09/2025	180.00	.00
101-01-923.010 CONSULTANTS-ATTORNEYS	Bromm, Lindahl, Freeman-	Interlocal	377	06/09/2025	240.00	.00
101-01-923.010 CONSULTANTS-ATTORNEYS	Bromm, Lindahl, Freeman-	Kennedy Campus South Hall Project	378	07/09/2025	680.00	.00
101-01-923.010 CONSULTANTS-ATTORNEYS	Bromm, Lindahl, Freeman-	Davis Claim	378	07/09/2025	100.00	.00
101-01-923.010 CONSULTANTS-ATTORNEYS	Bromm, Lindahl, Freeman-	City Commercial Lease	378	07/09/2025	260.00	.00
101-01-923.010						

GL Account and Title	Vendor Name	Description	Invoice Number	Invoice Date	Net Invoice Amount	Amount Paid
CONSULTANTS-ATTORNEYS	Bromm, Lindahl, Freeman-	Filing fee	378	07/09/2025	26.00	.00
101-01-923.010 CONSULTANTS-ATTORNEYS	Bromm, Lindahl, Freeman-	City Hall Commercial Lease	379	08/07/2025	160.00	.00
101-01-923.010 CONSULTANTS-ATTORNEYS	Bromm, Lindahl, Freeman-	Kennedy Campus South Hall Project	379	08/07/2025	420.00	.00
101-01-923.010 CONSULTANTS-ATTORNEYS	Bromm, Lindahl, Freeman-	Nordstrom	379	08/07/2025	60.00	.00
Total 101-01-923.010 CONSULTANTS-ATTORNEYS:					2,366.00	.00
<b>101-01-923.060 CONSULTANTS - OTHER</b>						
101-01-923.060 CONSULTANTS - OTHER	Capital City Concepts LLC	city 1/2 of 2025 wage and benefit study	2025	06/01/2025	10,500.00	.00
Total 101-01-923.060 CONSULTANTS - OTHER:					10,500.00	.00
Total GENERAL FUND:					15,554.49	.00
<b>POLICE FUND</b>						
<b>102-01-550.310 MATERIALS &amp; SUPPLIES</b>						
102-01-550.310 MATERIALS & SUPPLIES	Barco Municipal Products	20 reflective cones	IN-252620	08/12/2025	279.80	.00
Total 102-01-550.310 MATERIALS & SUPPLIES:					279.80	.00
<b>102-01-550.340 GAS, OIL, FUEL - CAR &amp; EQUIP</b>						
102-01-550.340 GAS, OIL, FUEL - CAR & EQUIP	CITY OF WAHOO	461.734 gal fuel - Aug 2025	37389	09/03/2025	1,477.55	.00
Total 102-01-550.340 GAS, OIL, FUEL - CAR & EQUIP:					1,477.55	.00
<b>102-01-550.360 UTILITIES-ELEC./TELE./GARBAGE</b>						
102-01-550.360 UTILITIES-ELEC./TELE./GARBAGE	Wahoo Utilities	216 W 3rd Street utilities	SEP2025	09/04/2025	137.95	.00
Total 102-01-550.360 UTILITIES-ELEC./TELE./GARBAGE:					137.95	.00
Total POLICE FUND:					1,895.30	.00
<b>STREET FUND</b>						
<b>103-01-550.340 GAS, OIL, FUEL - CAR &amp; EQUIP</b>						
103-01-550.340 GAS, OIL, FUEL - CAR & EQUIP	CITY OF WAHOO	229.884 gal fuel, 477.69 gal diesel - Aug 2025	37390	09/03/2025	2,326.33	.00
Total 103-01-550.340 GAS, OIL, FUEL - CAR & EQUIP:					2,326.33	.00
<b>103-01-550.351 CHEMICALS/MOSQUITO CONTROL</b>						
103-01-550.351 CHEMICALS/MOSQUITO CONTROL	ES OPCO USA LLC	Mosquito Control	CINV10527563	08/27/2025	3,941.45	.00
Total 103-01-550.351 CHEMICALS/MOSQUITO CONTROL:					3,941.45	.00
<b>103-01-550.360 UTILITIES-ELEC./TELE./GARBAGE</b>						
103-01-550.360 UTILITIES-ELEC./TELE./GARBAGE	Butler Public Power District	Walking Trail Tunnel Lt	8125	08/31/2025	40.60	.00
103-01-550.360 UTILITIES-ELEC./TELE./GARBAGE	Verizon Wireless	Acct #783729194-00001 Street Dept phone	6121551495	08/20/2025	40.02	.00
103-01-550.360 UTILITIES-ELEC./TELE./GARBAGE	Verizon Wireless	Acct #783729194-00002 - Tablets (7) 8/12/25-9/20/25	6121551496	08/20/2025	180.95	.00
103-01-550.360 UTILITIES-ELEC./TELE./GARBAGE	Wahoo Utilities	Service Center Utilites	SEP2025	09/04/2025	491.13	.00
103-01-550.360 UTILITIES-ELEC./TELE./GARBAGE	Waste Connections of NE,	007-W Service Center	7378218T054	09/01/2025	101.71	.00

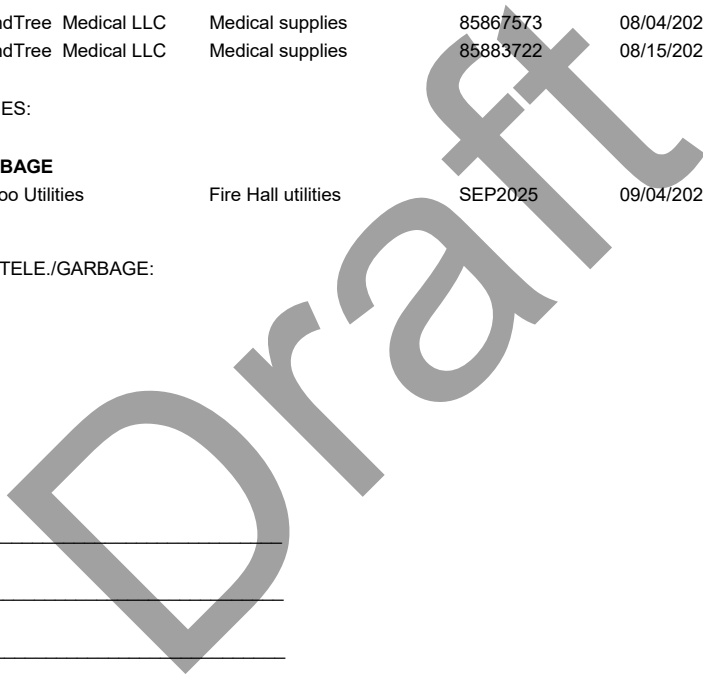
GL Account and Title	Vendor Name	Description	Invoice Number	Invoice Date	Net Invoice Amount	Amount Paid
Total 103-01-550.360 UTILITIES-ELEC./TELE./GARBAGE:					854.41	.00
<b>103-01-550.490 DIGGER'S HOTLINE EXPENSE</b>						
103-01-550.490 DIGGER'S HOTLINE EXPENSE	One Call Concepts	locate tickets	5080214	08/31/2025	24.27	.00
Total 103-01-550.490 DIGGER'S HOTLINE EXPENSE:					24.27	.00
<b>103-01-550.510 ASPHALT/GRAVEL/CONCRETE</b>						
103-01-550.510 ASPHALT/GRAVEL/CONCRETE	Pavers Inc.	2.48 ton cold mix asphalt	112025	08/18/2025	414.16	.00
Total 103-01-550.510 ASPHALT/GRAVEL/CONCRETE:					414.16	.00
<b>103-01-550.540 TRAFFIC CONTROL</b>						
103-01-550.540 TRAFFIC CONTROL	Central Salt	24.96 ton deicing salt	PSI25-16815	08/19/2025	1,338.11	.00
Total 103-01-550.540 TRAFFIC CONTROL:					1,338.11	.00
<b>103-01-554.630 BUILDING MAINTENANCE</b>						
103-01-554.630 BUILDING MAINTENANCE	Jackson Services, Inc.	Street Dept Mats	5630907	08/26/2025	31.10	.00
103-01-554.630 BUILDING MAINTENANCE	Jackson Services, Inc.	Street Dept Mats	5635254	09/02/2025	31.36	.00
103-01-554.630 BUILDING MAINTENANCE	Jackson Services, Inc.	Street Dept Mats	5639729	09/09/2025	33.85	.00
Total 103-01-554.630 BUILDING MAINTENANCE:					96.31	.00
<b>103-01-554.640 CAR/TRUCK MAINTENANCE</b>						
103-01-554.640 CAR/TRUCK MAINTENANCE	Saunders Co. Tire, LLC	flat repair	131526	08/15/2025	45.00	.00
Total 103-01-554.640 CAR/TRUCK MAINTENANCE:					45.00	.00
<b>103-01-923.010 CONSULTANTS-ATTORNEYS</b>						
103-01-923.010 CONSULTANTS-ATTORNEYS	Bromm, Lindahl, Freeman-	gWorks contract	379	08/07/2025	60.00	.00
Total 103-01-923.010 CONSULTANTS-ATTORNEYS:					60.00	.00
<b>103-01-923.020 CONSULTANTS-ENGINEERING</b>						
103-01-923.020 CONSULTANTS-ENGINEERING	JEO Consulting Group, Inc.	Urban Drainiage Evaluation Phase 2 throught June 20,2025	162316	06/24/2025	2,157.50	.00
103-01-923.020 CONSULTANTS-ENGINEERING	JEO Consulting Group, Inc.	Urban Drainiage Evaluation Phase 2 throught July 18,2025	163185	07/28/2025	6,482.50	.00
Total 103-01-923.020 CONSULTANTS-ENGINEERING:					8,640.00	.00
<b>103-09-550.360 UTILITIES-ELEC./TELE./GARBAGE</b>						
103-09-550.360 UTILITIES-ELEC./TELE./GARBAGE	Wahoo Utilities	Street Lights Utilities	SEP2025	09/04/2025	1,532.56	.00
Total 103-09-550.360 UTILITIES-ELEC./TELE./GARBAGE:					1,532.56	.00
Total STREET FUND:					19,272.60	.00
<b>CEMETERY FUND</b>						
<b>104-01-550.330 PRINTING &amp; PUBLICATION</b>						
104-01-550.330 PRINTING &						

GL Account and Title	Vendor Name	Description	Invoice Number	Invoice Date	Net Invoice Amount	Amount Paid
PUBLICATION	Mead Signs	Fall Cleanup Signs	3168	09/03/2025	70.00	.00
Total 104-01-550.330 PRINTING & PUBLICATION:					70.00	.00
<b>104-01-550.340 GAS, OIL, FUEL - CAR &amp; EQUIP</b>						
104-01-550.340 GAS, OIL, FUEL - CAR & EQUIP	CITY OF WAHOO	77.41 gal fuel - Aug 2025	37390	09/03/2025	247.71	.00
Total 104-01-550.340 GAS, OIL, FUEL - CAR & EQUIP:					247.71	.00
<b>104-01-550.360 UTILITIES-ELEC./TELE./GARBAGE</b>						
104-01-550.360 UTILITIES-ELEC./TELE./GARBAGE	Verizon Wireless	Acct #783729194-00001 Cemetery phone	6121551495	08/20/2025	47.97	.00
104-01-550.360 UTILITIES-ELEC./TELE./GARBAGE	Waste Connections of NE,	016-Sunrise Cemetery	7378218T054	09/01/2025	17.09	.00
Total 104-01-550.360 UTILITIES-ELEC./TELE./GARBAGE:					65.06	.00
<b>104-01-550.820 REPURCHASE OF LOTS</b>						
104-01-550.820 REPURCHASE OF LOTS	Cerin, Steven and Patricia	Return of Cemetery Lots KoH Blk 7 Lots 27-31 (4 total lots)	2025	09/01/2025	1,200.00	.00
Total 104-01-550.820 REPURCHASE OF LOTS:					1,200.00	.00
Total CEMETERY FUND:					1,582.77	.00
<b>FIRE FUND</b>						
<b>106-01-550.340 GAS, OIL, FUEL - CAR &amp; EQUIP</b>						
106-01-550.340 GAS, OIL, FUEL - CAR & EQUIP	CITY OF WAHOO	4.505 gal fuel, 34.897 gal diesel - AUG 2025	37383	09/03/2025	130.62	.00
Total 106-01-550.340 GAS, OIL, FUEL - CAR & EQUIP:					130.62	.00
<b>106-01-550.360 UTILITIES-ELEC./TELE./GARBAGE</b>						
106-01-550.360 UTILITIES-ELEC./TELE./GARBAGE	US Cellular	Acct #854313757 2 months cell services	0748916625	08/10/2025	77.32	.00
106-01-550.360 UTILITIES-ELEC./TELE./GARBAGE	Wahoo Utilities	Fire Hall utilities	SEP2025	09/04/2025	379.10	.00
Total 106-01-550.360 UTILITIES-ELEC./TELE./GARBAGE:					456.42	.00
<b>106-01-550.410 EDUCATION &amp; TRAINING EXPENSE</b>						
106-01-550.410 EDUCATION & TRAINING EXPENSE	IVERSON, JAYME	reimbursement for fire school	2025	08/26/2025	150.00	.00
Total 106-01-550.410 EDUCATION & TRAINING EXPENSE:					150.00	.00
<b>106-01-554.640 CAR/TRUCK MAINTENANCE</b>						
106-01-554.640 CAR/TRUCK MAINTENANCE	Jerry's Transmission Servic	repairs to seat belts sensors, hydraulic leak, and air conditioner	0044059	08/21/2025	6,872.65	.00
106-01-554.640 CAR/TRUCK MAINTENANCE	Kumpula, Cory	reimburse for boat maint (Credit card error)	2025	08/26/2025	181.91	.00
106-01-554.640 CAR/TRUCK MAINTENANCE	Wahoo Auto Parts LLC	spark plug for Dept boat	5398-310011	08/26/2025	17.97	.00
Total 106-01-554.640 CAR/TRUCK MAINTENANCE:					7,072.53	.00
<b>106-01-940.720 OTHER EQUIPMENT</b>						
106-01-940.720 OTHER EQUIPMENT	BoundTree Medical LLC	safety glasses	85878635	08/12/2025	182.40	.00
106-01-940.720 OTHER EQUIPMENT	Macqueen Equipment, LLC	bunker gear, boots, helmets	P53068	08/08/2025	552.63	.00

GL Account and Title	Vendor Name	Description	Invoice Number	Invoice Date	Net Invoice Amount	Amount Paid
Total 106-01-940.720 OTHER EQUIPMENT:					735.03	.00
<b>106-01-940.725 COMMUNICATION EQUIPMENT</b>						
106-01-940.725 COMMUNICATION EQUIPMENT	First Wireless Inc.	chargers for ne county radios	131188	08/22/2025	1,215.69	.00
106-01-940.725 COMMUNICATION EQUIPMENT	Motorola Solutions, Inc.	radio head unit	8282186084	08/20/2025	933.10	.00
Total 106-01-940.725 COMMUNICATION EQUIPMENT:					2,148.79	.00
Total FIRE FUND:					10,693.39	.00
<b>LIBRARY FUND</b>						
<b>108-01-550.360 UTILITIES-ELEC./TELE./GARBAGE</b>						
108-01-550.360 UTILITIES-ELEC./TELE./GARBAGE	Wahoo Utilities	Library utilities	SEP2025	09/04/2025	815.00	.00
108-01-550.360 UTILITIES-ELEC./TELE./GARBAGE	Wahoo Utilities	Library Sprinklers	SEP2025	09/04/2025	55.68	.00
108-01-550.360 UTILITIES-ELEC./TELE./GARBAGE	Waste Connections of NE,	010-Library	7378218T054	09/01/2025	17.09	.00
Total 108-01-550.360 UTILITIES-ELEC./TELE./GARBAGE:					887.77	.00
<b>108-01-550.560 BOOKS</b>						
108-01-550.560 BOOKS	Baker & Taylor Entertainme	Books	2039232776	08/12/2025	29.39	.00
108-01-550.560 BOOKS	Baker & Taylor Entertainme	Books	2039249128	08/21/2025	116.03	.00
108-01-550.560 BOOKS	Baker & Taylor Entertainme	Books	2039255290	08/25/2025	206.74	.00
108-01-550.560 BOOKS	Baker & Taylor Entertainme	credit on account	2039255290	08/25/2025	.01-	.00
108-01-550.560 BOOKS	Cengage Learning Inc.	Books	999100867574	08/21/2025	474.94	.00
108-01-550.560 BOOKS	Center Point Publishing	Book	2193694	08/12/2025	109.21	.00
Total 108-01-550.560 BOOKS:					936.30	.00
<b>108-01-550.810 AV/VIDEO AND DIGITAL CONTENT</b>						
108-01-550.810 AV/VIDEO AND DIGITAL CONTENT	Midwest Tape, LLC	Audio Visual content	507679609	08/31/2025	530.54	.00
Total 108-01-550.810 AV/VIDEO AND DIGITAL CONTENT:					530.54	.00
<b>108-01-554.630 BUILDING MAINTENANCE</b>						
108-01-554.630 BUILDING MAINTENANCE	Access Elevator & Lifts, Inc	8/14/25 service call	40392	08/21/2025	337.20	.00
108-01-554.630 BUILDING MAINTENANCE	Continental Fire Sprinkler	replace dry vavle face plate gasket	328045	08/30/2025	184.29	.00
108-01-554.630 BUILDING MAINTENANCE	Heartland Office Cleaners	Library Cleaning	24773	09/01/2025	1,040.00	.00
108-01-554.630 BUILDING MAINTENANCE	Jackson Services, Inc.	Library Mats	5630920	08/26/2025	26.83	.00
Total 108-01-554.630 BUILDING MAINTENANCE:					1,588.32	.00
Total LIBRARY FUND:					3,942.93	.00
<b>DEBT SERVICE FUND</b>						
<b>110-06-923.010 CONSULTANTS-ATTORNEYS</b>						
110-06-923.010 CONSULTANTS-ATTORNEYS	Cline Williams Wright John	Kennedy Campus Redevelopment Project through June 30, 2025	415170	07/03/2025	1,000.00	.00
110-06-923.010 CONSULTANTS-ATTORNEYS	Cline Williams Wright John	Kennedy Campus Redevelopment Project through July 31, 2025	417220	08/05/2025	201.00	.00

GL Account and Title	Vendor Name	Description	Invoice Number	Invoice Date	Net Invoice Amount	Amount Paid
Total 110-06-923.010 CONSULTANTS-ATTORNEYS:					1,201.00	.00
<b>110-06-923.090 PMT TO DEVELOPER-TIF</b>						
110-06-923.090 PMT TO DEVELOPER -TIF	JEO Building Co.	TIF Payment	9125	09/01/2025	16,999.58	.00
110-06-923.090 PMT TO DEVELOPER -TIF	Omaha Steel Castings Co	TIF Payment 2nd 1/2 property taxes - 2025	9125	09/09/2025	43,192.27	.00
Total 110-06-923.090 PMT TO DEVELOPER-TIF:					60,191.85	.00
Total DEBT SERVICE FUND:					61,392.85	.00
<b>CAPITAL IMPROVEMENT FUND</b>						
<b>111-01-923.010 CONSULTANTS-ATTORNEYS</b>						
111-01-923.010 CONSULTANTS-ATTORNEYS	Bromm, Lindahl, Freeman-	K2 Warranty	377	06/09/2025	1,160.00	.00
111-01-923.010 CONSULTANTS-ATTORNEYS	Bromm, Lindahl, Freeman-	K2 Warranty	378	07/09/2025	1,580.00	.00
111-01-923.010 CONSULTANTS-ATTORNEYS	Bromm, Lindahl, Freeman-	K2 Warranty	379	08/07/2025	1,300.00	.00
Total 111-01-923.010 CONSULTANTS-ATTORNEYS:					4,040.00	.00
<b>111-01-923.060 CONSULTANTS - OTHER</b>						
111-01-923.060 CONSULTANTS - OTHER	JEO Consulting Group, Inc.	City Facilities Planning - EDU and Outreach through June 13, 2025	162287	06/23/2025	5,612.50	.00
111-01-923.060 CONSULTANTS - OTHER	JEO Consulting Group, Inc.	City Facilities Planning - EDU and Outreach through July 11, 2025	163092	07/24/2025	4,857.50	.00
111-01-923.060 CONSULTANTS - OTHER	JEO Consulting Group, Inc.	City Facilities Planning - EDU and Outreach through Aug 15, 2025	163869	08/25/2025	3,316.25	.00
Total 111-01-923.060 CONSULTANTS - OTHER:					13,786.25	.00
Total CAPITAL IMPROVEMENT FUND:					17,826.25	.00
<b>BUILDING &amp; ZONING FUND</b>						
<b>115-01-546.110 SALARIES &amp; WAGES</b>						
115-01-546.110 SALARIES & WAGES	Wahoo Utilities	Reimbursement of Dave Henke's time	82325	08/23/2025	27.50	.00
Total 115-01-546.110 SALARIES & WAGES:					27.50	.00
<b>115-01-550.340 GAS, OIL, FUEL - CAR &amp; EQUIP</b>						
115-01-550.340 GAS, OIL, FUEL - CAR & EQUIP	CITY OF WAHOO	29.001 gal fuel - Aug 2025	37388	09/03/2025	92.80	.00
Total 115-01-550.340 GAS, OIL, FUEL - CAR & EQUIP:					92.80	.00
<b>115-01-550.360 UTILITIES-ELEC./TELE./GARBAGE</b>						
115-01-550.360 UTILITIES-ELEC./TELE./GARBAGE	Verizon Wireless	Acct #783729194-00001 - BZ phone	6121551495	08/20/2025	52.12	.00
Total 115-01-550.360 UTILITIES-ELEC./TELE./GARBAGE:					52.12	.00
<b>115-01-550.980 OCCUPANCY CERT DEP REFUND</b>						
115-01-550.980 OCCUPANCY CERT DEP REFUND	Woodsmith Builders	refund Occ Deposit 590 W 25th Circle B-102-24	B-102-24	11/22/2024	500.00	.00
Total 115-01-550.980 OCCUPANCY CERT DEP REFUND:					500.00	.00

GL Account and Title	Vendor Name	Description	Invoice Number	Invoice Date	Net Invoice Amount	Amount Paid
<b>115-01-923.010 CONSULTANTS-ATTORNEYS</b>						
115-01-923.010 CONSULTANTS-ATTORNEYS	Bromm, Lindahl, Freeman-	Dorothy Variance	378	07/09/2025	400.00	.00
115-01-923.010 CONSULTANTS-ATTORNEYS	Bromm, Lindahl, Freeman-	Robert's Addition	379	08/07/2025	40.00	.00
Total 115-01-923.010 CONSULTANTS-ATTORNEYS:					440.00	.00
Total BUILDING & ZONING FUND:					1,112.42	.00
<b>EMS</b>						
<b>121-01-550.340 GAS, OIL, FUEL - CAR &amp; EQUIP</b>						
121-01-550.340 GAS, OIL, FUEL - CAR & EQUIP	CITY OF WAHOO	29.13 gal fuel, 177.386 gal diesel - Aug 2025	37387	09/03/2025	683.92	.00
Total 121-01-550.340 GAS, OIL, FUEL - CAR & EQUIP:					683.92	.00
<b>121-01-550.355 MEDICAL SUPPLIES</b>						
121-01-550.355 MEDICAL SUPPLIES	BoundTree Medical LLC	Medical supplies	85867573	08/04/2025	243.48	.00
121-01-550.355 MEDICAL SUPPLIES	BoundTree Medical LLC	Medical supplies	85883722	08/15/2025	328.15	.00
Total 121-01-550.355 MEDICAL SUPPLIES:					571.63	.00
<b>121-01-550.360 UTILITIES-ELEC./TELE./GARBAGE</b>						
121-01-550.360 UTILITIES-ELEC./TELE./GARBAGE	Wahoo Utilities	Fire Hall utilities	SEP2025	09/04/2025	379.10	.00
Total 121-01-550.360 UTILITIES-ELEC./TELE./GARBAGE:					379.10	.00
Total EMS:					1,634.65	.00
Grand Totals:					134,907.65	.00



Dated: \_\_\_\_\_

Mayor: \_\_\_\_\_

City Council: \_\_\_\_\_

\_\_\_\_\_

\_\_\_\_\_

\_\_\_\_\_

\_\_\_\_\_

\_\_\_\_\_

City Recorder: \_\_\_\_\_



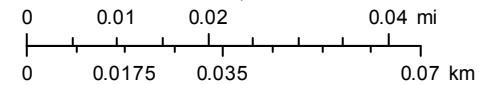


July 24, 2025  
14:56 PM

DISCLAIMER: This map is not intended for conveyances, nor is it a legal survey. The information is presented on a best-efforts basis, and should not be relied upon for making financial, survey, legal or other commitments.

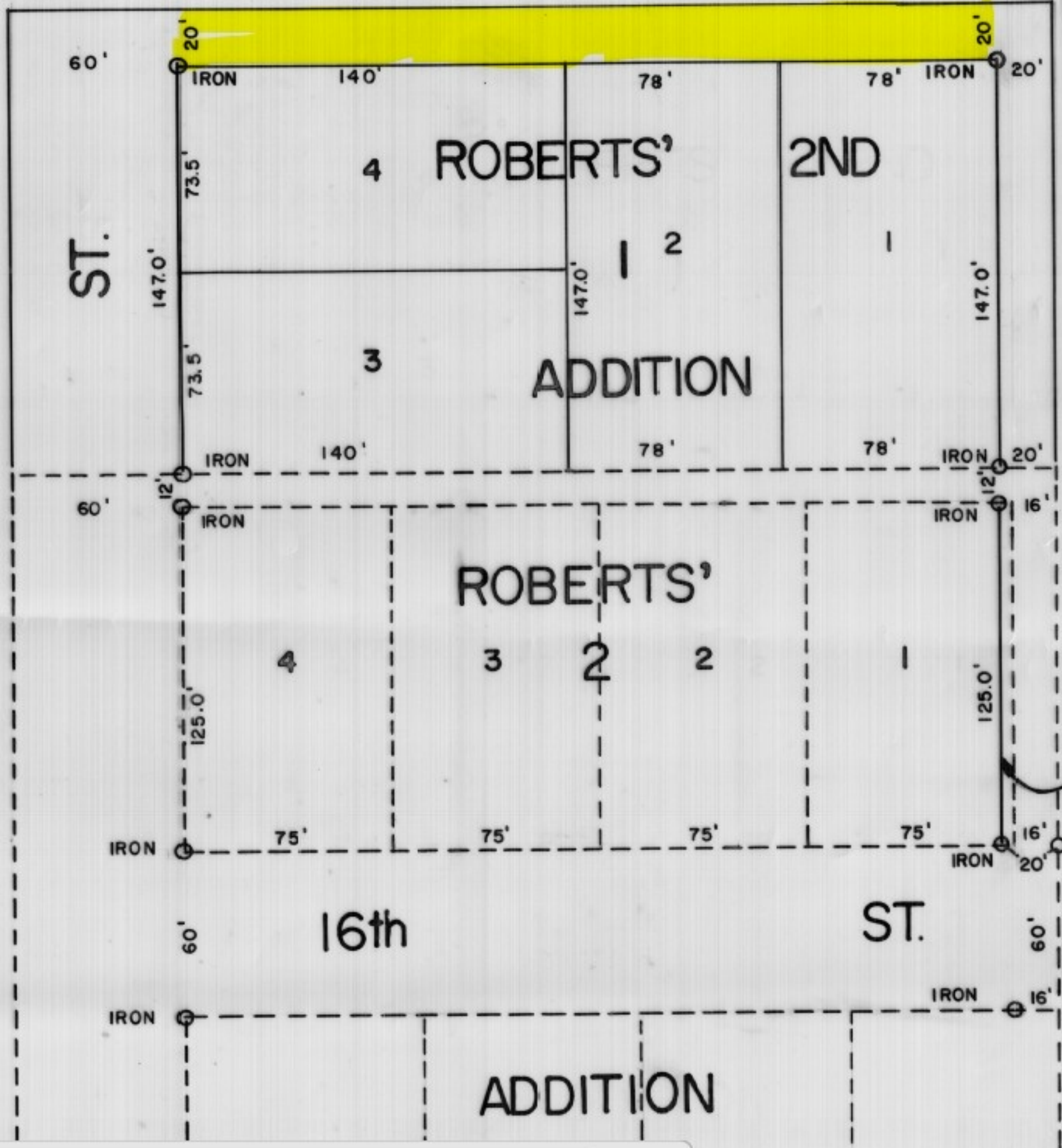
1:1,343

- |  |                     |                      |        |      |                    |  |                          |
|--|---------------------|----------------------|--------|------|--------------------|--|--------------------------|
|  | Transformers - Pad  | <b>Switch Points</b> |        | Open | <b>Light Poles</b> |  | Rental                   |
|  | Transformers - Pole |                      | Closed |      | Blank Field        |  | Unmetered                |
|  |                     |                      |        |      | Metered            |  | Red Tagged Utility Poles |



STATE OF NEBRASKA  
 SAUNDERS COUNTY  
 ENGINEER IN NUMERICAL INSTRUMENTS AND FILED FOR  
 RECORD IN THE REGISTER OF DEEDS OFFICE OF  
 SAID COUNTY ON THE 11th DAY OF

NO.	45
NUM.	
PAY.	
REC.	
AND	
FILE	



NOTE: EAST 4' LOT 1, BLOCK 2  
 ROBERTS' ADDITION DEEDED  
 TO THE CITY OF WAHOO.

L-34

August 7, 2025

To: Planning Commission Members

From: Eric Roumph

1660 N. Elm Street

RE: Request for vacation of public right-of-way

**Benefits to the City of Wahoo**

I am requesting the vacation of the 20' right-of-way located directly north of my property at 1660 N Elm. This will allow me to purchase and improve 0.87 acres of adjacent land. My plans include planting trees and constructing a small outbuilding.

**Key Benefits:**

1. Increased Property Tax Revenue

- The land is currently outside city limits and generates no tax revenue.
- Upon vacation, I will purchase the 0.87 acres, incorporating it into my property.
- This will immediately contribute to:
  - Wahoo City General Fund
  - Wahoo City Bond Fund
  - Wahoo Airport Authority
  - Wahoo Airport Authority Bond Fund
- Future improvements will further increase property value and tax contributions.

2. Immediate Visual Enhancement

- The land is currently unused and overgrown due to farming limitations.
- Once acquired, I will clear weeds and landscape the area with trees, similar to my current backyard.



Current property on the north end of Elm Street. Unused and overgrown.



My backyard at 1660 N. Elm. I will make the north area look like this.

**Arguments in Favor:**

**1. Neighborhood Compatibility**

- The area north of Linden and Elm Streets features larger lots and tree-covered outbuildings.
- My improvements will match the existing character of the neighborhood.



**2. Planned and Responsible Development**

- This request follows the City's formal process for property improvement.
- It ensures that development is consistent with neighborhood aesthetics and zoning standards.

July 25, 2025

TO: Planning Commission Members

FROM: Melissa Harrell, City Administrator

RE: Request for vacation of public right-of-way

A request was made by the owner of 1660 N Elm to vacate the 20' dedicated right-of-way located directly north of Lots 1, 2 & 4.

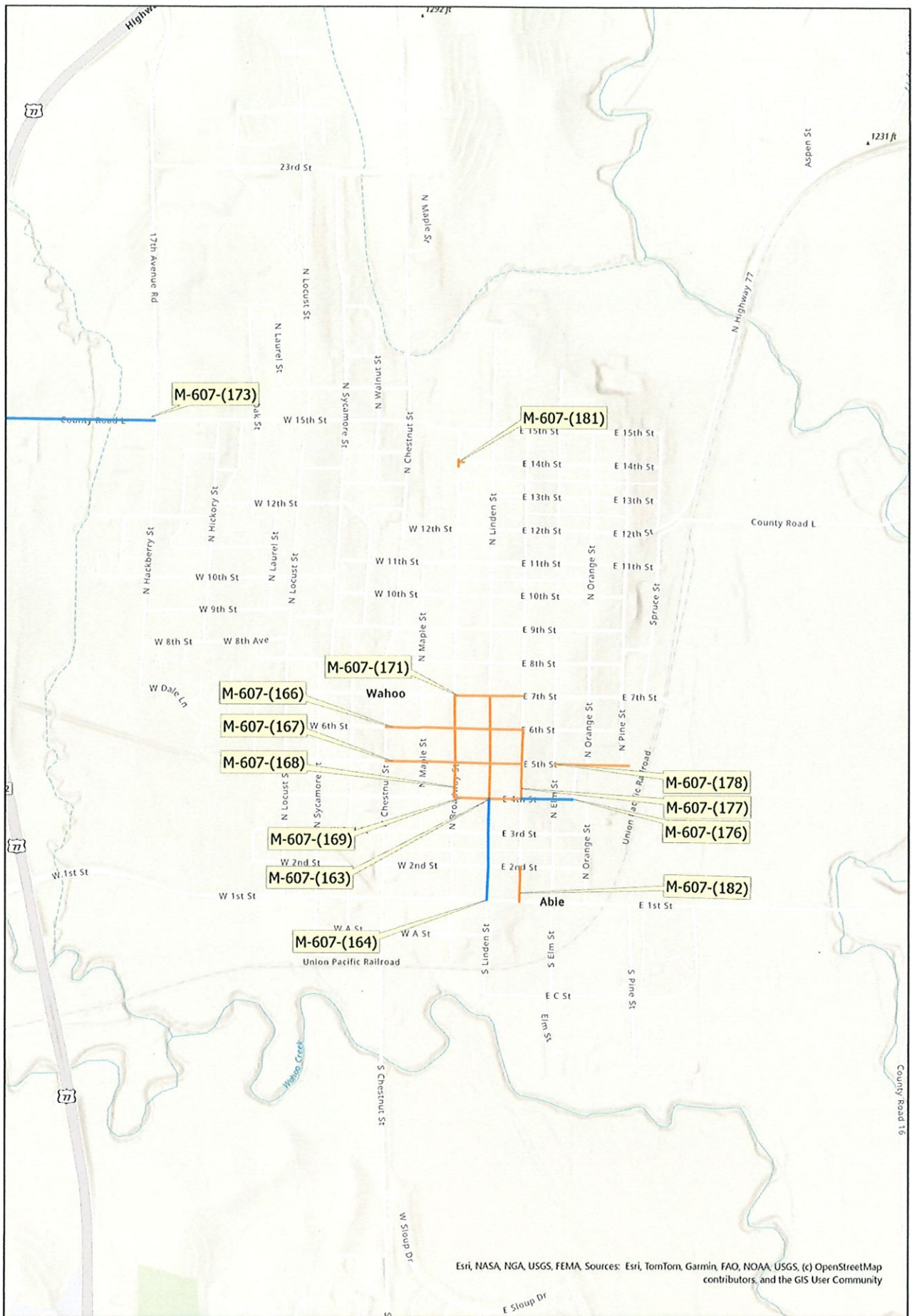
The owner wishes to purchase property to the north of his currently owned property, with the desire to combine his currently owned property with this new acquisition. The area is roughly indicated on an attached (the area marked with a thick black line). They wish to construct a building on the newly acquired property, which can only be done when there is a primary residence on the legal lot.

There are no utilities located in this public ROW. You will also recall there was a recent re-plat of areas to the west and north of by Larry Jansen. We expect these improvements to be constructed over the next year.

The City of Wahoo Municipal Code describes a process for vacating public right-of-way that should be followed IF the Council finds vacation of the ROW is in the best interests of the community. Because this public ROW is adjacent to undeveloped property, staff is asking the Planning Commission to make a recommendation on whether or not they believe vacation of this public ROW is in the best interests of community. Once that position is available, it will go to the City Council for final determination.

The requestor, Eric Roumph, has been made aware of this meeting and has been invited to attend to share more on his request.

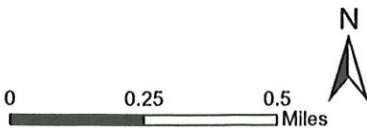
Included in the packet are the original plat of Robert's 2<sup>nd</sup> Addition, an aerial image showing the ROW to be vacated and the additional property they wish to purchase, and a plat showing the planned cul-de-sac.



Esri, NASA, NGA, USGS, FEMA Sources: Esri, TomTom, Garmin, FAO, NOAA, USGS, (c) OpenStreetMap contributors, and the GIS User Community



Created by:  
GIS Coordinator, Wahoo Utilities  
402-443-3222 Ex. 17



**Legend**

Planned Timeframe	
<span style="color: orange;">—</span>	1 Year Plan
<span style="color: blue;">—</span>	6 Year Plan

**One and Six Year Plan  
Fiscal Year  
25/26-30/31**

# City of Wahoo

One- & Six-Year Plan Review

Completed by Joe Wynn

## **One Year Plan Work COMPLETED in 24/25**

M-607-(180) North Highlands Concrete, Grading, Storm Sewer

M-607-(179) Concrete, Curb Ramps, Brick Repair

## **Current One Year Proposal 25/26 Period ending December 31, 2026**

M-607-(177) Asphalt, milling, Curb and Gutter, Sidewalk, Curb Ramps, Concrete

M-607-(163) Asphalt, milling, Curb and Gutter, Sidewalk, Curb Ramps, Concrete

M-607-(171) Asphalt, milling, Curb and Gutter, Sidewalk, Curb Ramps, Concrete

M-607-(166) Asphalt, milling, Curb and Gutter, Sidewalk, Curb Ramps, Concrete

M-607-(167) Asphalt, milling, Curb and Gutter, Sidewalk, Curb Ramps, Concrete

M-607-(168) Asphalt, milling, Curb and Gutter, Sidewalk, Curb Ramps, Concrete

M-607-(169) Asphalt, milling, Curb and Gutter, Sidewalk, Curb Ramps, Concrete

M-607-(169) Remove Asphalt, Curb and Gutter, Curb Ramps, Concrete, Inlets, Brick Repair

## **One Year 25/26 Additions**

M-607-(181) Remove Asphalt, Curb & Gutter, Concrete, Curb Ramps

M-607-(182) Asphalt, Curb & Gutter

## **Six Year Plan Work Year ending December 31<sup>st</sup>, 2031**

\*No Changes





**Resolution No. 2025-09**

The following resolution was introduced by Warford, who moved its adoption, seconded by

Ideus:

WHEREAS, the City Street Superintendent has prepared and presented a One Year and Six Year Plan for Street Improvement Program for the City of Wahoo, and

WHEREAS, a public meeting was held on the 9th day of September, 2025, to present this plan and there were no objections to said plan;

THEREFORE, BE IT RESOLVED by the Mayor and City Council of Wahoo, Nebraska, that the plans and data as furnished are hereby in all things accepted and adopted.

Upon roll call vote as follows:

DATED this 9th day of September, 2025.

---

Gerald D Johnson, Mayor

---

Christina Fasel, City Clerk

(SEAL)



1828 WALNUT STREET, SUITE 701  
KANSAS CITY, MO 64108  
(913) 851.4730  
CHARLESWORTHCONSULTING.COM

September 8, 2025

Melissa Harrell  
City Administrator  
City of Wahoo  
605 North Broadway  
Wahoo, NE 68066

Re: **Property / Liability / Workers' Compensation Insurance  
October 1, 2025**

Dear Ms. Harrell:

The following is offered as an overview of the City's property, liability and workers' compensation insurance marketing project. Our firm was retained by the City to assist in the preparation of proposal specifications, management of the underwriting process, reviewing the proposals and preparing a comprehensive spreadsheet comparing coverages, conditions, and premiums.

### **Background**

Proposal specifications were developed and provided to insurance agencies who responded to a published public notice. The RFP included a detailed proposal format that each participant was required to complete to ensure a full understanding of their program.

Three participants responded to the public notice and received the RFP including League Association of Risk Management (LARM); the Jones Agency, and Marsh McLennan Agency (MMA). Each participant was provided approximately 75 days to prepare their proposal.

### **Analysis**

All three organizations submitted proposals for the City's consideration with one limited to Fire operations. Although we always like as many options as possible, this is a realistic

result for what is often viewed as a difficult risk to insure.

### **LEAGUE ASSOCIATION OF RISK MANAGEMENT / LARM (Incumbent)**

LARM is a risk sharing pool that has been the risk transfer partner for the City and other Nebraska cities for many years. Their program offers competitive terms and conditions for a total premium (contribution) of \$618,149. This total cost is based on the City making a 3-year commitment to remain in LARM and extending the required notice of withdrawal from 90 days to 180 days.

As a risk sharing pool, LARM can offer deductibles which are often lower than what are typically offered by the standard insurance market. The most notable is the property deductible is \$25,000 per occurrence for all perils compared to larger wind/hail deductibles typical of other programs.

The liability limits for the LARM program are \$5,000,000 for all coverages, tailored to the liability cap of the Nebraska Tort Claims Act, applicable to torts (not federal jurisdictions). The property is insured on a blanket basis (some exceptions) with no applicable coinsurance.

As an assessable risk sharing program, it is always important to closely review its financial health. We are not qualified to provide a financial strength opinion, but the most recently published financial report suggests the program has sufficient cash and investment assets to cover outstanding liabilities.

The LARM program provides terms and conditions that will respond to reasonably foreseeable events and claims. LARM has a reputation as an excellent risk management partner, providing training and loss control services.

### **Travelers (Marsh McLennan Agency / MMA)**

Travelers is known as an industry leader for municipal insurance programs. Their terms and conditions are excellent with outstanding loss control and claim services. Their program, along with a wind/hail deductible buy-down option and comprehensive cyber coverage, is the lowest cost option at \$598,429.

The Travelers wind/hail deductible is 3% of the building value, subject to a \$250,000 per occurrence minimum deductible per occurrence. MMA did offer three deductible buy-down options to mitigate this risk. All three were limited to City Hall, Civic Center, Senior Center, Fire Station and Library with deductibles of \$50,000 per location; \$50,000 per occurrence; or \$100,000 per occurrence. A review of hail losses of September, 2010 (\$238,715 in damages) and August, 2021 (\$489,559 in damages) suggest that regardless of the deductible buy-down coverage selected, the losses would have been within the City's deductible with no insurance coverage.

The most concerning liability exposure we have identified is the lack of protection of sexual abuse / molestation claims.

### **CONTINENTAL WESTERN GROUP (The Jones Agency)**

Unfortunately, the Continental Western Group program is limited to Fire Department operations. Apparently, they were not comfortable with some underwriting information and were unable to quote the entire City program.

### **CYBER**

Each participant quoted cyber coverage. Both the incumbent program and the coverage offered by MMA were from Beazley and the Jones Agency quoted a program by Cowbell Insurance. The premiums of the Jones and MMA programs are similar, with LARM's cyber program included.

### **Summary**

No two insurance programs are identical. Each has pros and cons which must be measured and compared. After careful review, it is our recommendation that the Council consider accepting the LARM program for a total cost of \$618,149.

As noted during our recent Council meeting, LARM is not "insurance" and requires a commitment to the overall success of the program. They have been a trusted partner of the City of many years, and we are unable to find any compelling reason to change programs as this time. In our opinion, the premium savings of the optional program does not outweigh the additional risk as outlined above.

I look forward to answering any questions from the City Council during the September 9<sup>th</sup> meeting.

Respectfully,

A handwritten signature in black ink, appearing to read "James Charlesworth", written over a light blue rectangular background.

James Charlesworth, ARM

JC/km

Encl.

# CITY OF WAHOO

## MARKETING SPREADSHEET

### Premium Summary

	Expiring	LARM	CWG / BITCO	Marsh
Property	352,138	\$ 342,880	\$ 2,468	\$ 220,718
Deductible Buy Down	NA	NA	NA	\$ 61,865
Equipment Breakdown	Included	Included	NA	\$ 54,989
Inland Marine	Included	Included	\$ 4,549	\$ 6,555
Crime	Included	Included	\$ -	\$ 2,091
General Liability	62,879	\$ 64,389	\$ 1,170	\$ 31,979
Deadly Weapon	Included	Included	Not Quoted	Not Quoted
Law Enforcement Liability	8,158	\$ 8,387	Not Quoted	\$ 14,323
Public Management Liability	12,726	\$ 13,403	\$ 110	\$ 6,042
Employment Practices Liability	Included	Included	Not Quoted	\$ 9,867
Automobile	65,052	\$ 72,056	\$ 7,440	\$ 69,857
Umbrella	Included	N/A	\$ 791	\$ 26,467
Cyber	Included	Included	\$ 6,040	\$ 7,150
Workers' Compensation	123,613	\$ 117,034	\$ 97,917	\$ 86,526
<b>TOTAL</b>	<b>624,566</b>	<b>\$ 618,149</b>	<b>\$ 120,485</b>	<b>\$ 598,429</b>

With 3-Year Resolution & 180 Day Notice

90-Day Only; \$650,683
90-Day / 2-Year; \$644,176.33
90-Day / 3-Year; \$637,699.49
180-Day Only; \$637,6369.49
180-Day / 2-Year; \$624,655.83
180-Day / 3-Year; \$618,149

**PROPERTY**

	<b>LARM</b>	<b>Jones Group</b>	<b>Marsh</b>
Insurer:	LARM	CWG	Travelers
Limit:	\$72,888,752; Blanket of \$72,002,210 Building and Contents	\$1,143,145 Blanket Building and Contents	\$77,432,816 Blanket of \$44,810.69 Building and Contents
Blanket:		158 W. 6th Street Only (Fire Station Only)	
Locations Outside of Blanket	1590 Co. Rd K, 112 E 15th, 359 E. C St.		See list * below
Margin Clause:	None Noted	None	None
Special Cause of Loss / Risk Of Direct Physical Loss:	Yes	Yes	Yes
Agreed Amount / No Coinsurance:	Yes	90% Coinsurance	Yes
Replacement Cost Coverage:	Yes	Unclear	Yes
ACV Scheduled Locations:	1590 Co Rd. K Barn		
	216 West 3rd - Old Police		
Property Of Others:	\$10,000	\$100,000	
Personal Effects:	Included in Property of Others	Included in Property of Others	Included in Property of Others
Property In The Open:	Yes - Within 1,000 Ft. of Insured Premises	Yes - Within 1,000 Ft. of Insured Premises	Yes - Within 1,000 Ft. of Insured Premises
Rebuild At Optional Location If Total Loss:	Yes - Within 1,000 Ft. of Insured Premises	Yes - Within 1,000 Ft. of Insured Premises	Yes - Within 1,000 Ft. of Insured Premises
Pollution Clean-Up From a Covered Peril:	\$20,000	\$100,000 Limit	\$100,000 Limit
Property In Transit:	\$50,000	\$100,000 Limit	25,000 Limit
Building Ordinance & Law:	\$500,000 Demolishing of Undamaged	Building Limit - Demolishing of Undamaged	\$500,000 Demolishing of Undamaged
	Value of Undamaged - Included Above	\$300,000 Value of Undamaged	Value of Undamaged - Included Above
	Increased Cost of Construction - Included Above	Included - Increased Cost of Construction	Increased Cost of Construction - Included Above
Incl. Architect & Engineering Fees:	\$100,000	Not Noted	Yes
Incl. Unintentional Errors In Schedules:	No	Not Noted	Yes
Incl. Debris Removal	\$500,000	Yes	\$250,000
Accounts Receivable:	\$500,000	\$100,000 Limit	\$100,000 At All Described Premises, \$100,000 In Transit or at All Undescribed Premises
Valuable Papers And Records:	\$250,000	\$100,000 Limit	\$100,000 At All Described Premises, \$100,000 In Transit or at All Undescribed Premises
VP&R Includes Data And Media:	No	No	Yes
Sewer / Drain Backup:	Yes	\$100,000 or building limit, whichever is less Limit	Yes - \$10,000
Trees, Shrubs & Plants:	\$25,000 Per Item / \$25,000 Per Occurrence	\$1,000 Per Item	\$25,000 Per Item / \$25,000 Per Occurrence
		\$25,000 Per Occurrence	\$25,000 Per Occurrence
Foundations / Parking Lots:	Yes	Yes	Yes
Newly Acquired Property:	\$1,500,000 Building and Contents Limit	\$2,000,000 Buildings Limit	\$2,000,000 Buildings Limit
	120 Days to Report	\$1,000,000 Personal Property Limit	\$1,000,000 Personal Property Limit
			180 Days to Report
Incl. On / Off Premises Power Surge:	Yes	Yes	Yes
Unscheduled Miscellaneous Property:	\$50,000	Not Noted	\$25,000
Unscheduled Playground Equipment:	\$25,000	Not Noted	\$25,000 Item Limit & \$100,000 Occurrence
Data Processing:	\$100,000	\$100,000 Limit	\$100,000 Limit
Business Income:	\$100,000	\$130,000 Limit	\$1,000,000
Incl. Extra Expense:	Yes	Yes	Yes
Blanket (No Allocation Of Values)	Yes	Yes	Yes
Leasehold Interest	\$50,000	Not Noted	\$100,000
Actual Loss Sustained:	Yes	No	No
Include Ordinary Payroll:	No	Not Noted	Yes
Period Of Indemnity:	No Limit	Not Noted	120 Days
Extended Period Of Indemnity:	No Limit	Not Noted	180 Days
Terrorism:	Included	Included	Included
Deductible:	\$25,000 Wind / Hail	\$5,000 Wind/Hail	3%, \$250,000 Minimum Wind/Hail
	\$25,000 All Other Perils (\$5,000 Property in the Open)	\$1,000 All Other Perils	\$10,000 All Other Perils
	72 Hours / Time Element		
<b>Property Premium:</b>	<b>\$342,880</b>	<b>\$2,468</b>	<b>\$220,718</b>
	With 3-Year Resolution & 180 Day Notice		
<u>Deductible Option</u>			3%, \$250,000 Minimum Any One Occurrence Wind/Hail, 72 Hour for Business Income

			(\$25,000 AOP Ded - Savings of \$3-\$5k, \$50k AOP Ded - Savings - Closer to \$8-\$10k)
<b>Wind/Hail Deductible Buydown Options</b>			
Option #1	NA	NA	Insurer: BHI Digital Buying deductible down to \$100,000 <u>each occurrence</u> . Maximum payable: \$620,169 each occurrence. Includes 605 N Broadway St, 310 N Linden St, 236 W 4th St, 158 W 6th St, 637 N Maple
<b>Premium</b>			<b>\$83,251.52</b>
Option #2	NA	NA	Buying deductible down to \$50,000 <u>each occurrence</u> . Maximum payable: \$670,169 each occurrence. Includes 605 N Broadway St, 310 N Linden St, 236 W 4th St, 158 W 6th St, 637 N Maple
<b>Premium</b>			<b>\$91,620.27</b>
Option #3	NA	NA	Buying deductible down to \$50,000 <u>each covered location</u> . Maximum payable: \$470,169 each and every occurrence. Includes 605 N Broadway St, 310 N Linden St, 236 W 4th St, 158 W 6th St, 637 N Maple
<b>Premium</b>			<b>\$61,864.68</b>
<b>Earthquake Option:</b>			
	\$5,000,000 Limit Per Occurrence	Not Quoted	\$1,000,000 Limit Per Occurrence
	\$5,000,000 Annual Aggregate		\$1,000,000 Annual Aggregate
Incl. Earth Movement (Settling/ Shifting <u>Not Related To A Registered Earthquake</u> ):	Yes		Yes
Deductible:	\$25,000 Per Occurrence		No
Premium:	<b>Included</b>		\$25,000 Per Occurrence
			<b>Included</b>
<b>Flood Option:</b>			
	\$1,000,000 Limit Per Occurrence	Not Quoted	\$1,000,000 Limit Per Occurrence
	\$1,000,000 Annual Aggregate		\$1,000,000 Annual Aggregate
Excludes Zones "A" and "V":	Yes		Yes
Deductible:	\$100,000 Zones A and V Per Occurrence		
	\$25,000 All Other Zones Per Occurrence		\$25,000 All Other Zones Per Occurrence
Premium:	<b>Included</b>		<b>Included</b>
<b>Equipment Breakdown</b>			
Limit:	\$54,277,210	Included	\$73,515,945
Blanket - All Locations:	Yes	Yes	Yes
Includes Power Generation:	Yes	No	Yes
Comprehensive Form	Not Noted	CP 0004 12-17	Yes
Expediting Expenses:	\$100,000	Not Noted	\$500,000
Ammonia Contamination:	\$100,000	Not Noted	\$100,000
Hazardous Substances:	\$20,000	Not Noted	\$100,000
Consequential Loss:	\$50,000	Not Noted	No
Water Damage:	\$100,000	Not Noted	\$100,000
Data and Media Restoration:	\$100,000	Not Noted	\$100,000
Ordinance or Law:	\$500,000	Not Noted	\$1,000,000
Mold, Fungus or Mildew	\$20,000	Not Noted	\$100,000
Environmental, Efficiency, Safety and Green Cert.:	Not Noted	Not Noted	Property Damage Percentage Factor 5% - Property Damage Additional Costs Limit \$25,000 - BI or Extra Expense 30 Days
Terrorism:	Yes	Not Noted	Yes
Deductible:	\$25,000 Per Loss	Not Noted	\$25,000 Except \$100,000 for any electrical generating equipment Per Loss
<b>Annual Premium:</b>	<b>Included</b>	<b>Included</b>	<b>\$54,989</b>

The equipment breakdown policy is on a separate boiler policy with Travelers.

Locations Outside of Blanket

PREM	BUILDING	DESCRIPTION OF COVERAGE OR PROPERTY	LIMITS OF INSURANCE
11	20	Buildings	\$504,464
11	20	Your Business Personal Property	\$211,000
12	21	Buildings	\$28,787
12	21	Your Business Personal Property	\$65,000
12	22	Buildings	\$1,366,021
12	23	Buildings	\$17,727,242
12	23	Your Business Personal Property	\$89,700
12	24	Buildings	\$11,255
21	46	Buildings	\$3,406,526
22	47	Buildings	\$1,937,132
22	47	Your Business Personal Property	\$8,000
22	48	Buildings	\$450,480
22	49	Buildings	\$450,480
22	50	Buildings	\$457,848
22	51	Buildings	\$496,416
22	52	Buildings	\$504,667
22	53	Buildings	\$561,523
22	54	Buildings	\$577,584
22	54	Your Business Personal Property	\$30,000
22	55	Buildings	\$599,975
22	56	Buildings	\$666,582
22	57	Buildings	\$666,582
22	58	Buildings	\$806,943

**INLAND MARINE**

	<b>LARM</b>	<b>Jones Group</b>	<b>Marsh</b>
Insurer:	LARM	CWG	Travelers Property Casualty Company of America
<b>Equipment Limit:</b>	\$3,116,710 Total Limit	1,500,000 portable equipment, GRC	\$2,438,730 Total Limit
	\$2,311,430 Scheduled Contractor's Equipment	\$5,000 Polaris	\$2,288,730 Scheduled Contractor's Equipment
	\$50,000 Unscheduled Contractor's Equipment	\$5,000 Jon Boat with motor	\$100,000 Unscheduled Contractor's Equipment
	\$50,000 Unscheduled Max. Per Item	\$1,000,000 commandeered property, \$0 ded, ALS	\$5,000 Unscheduled Max. Per Item
	\$178,000 EDP Hardware	Not Noted - EDP Hardware	\$1,000/Item, \$2,500/Any One Employee, \$5,000 Ea Occurrence - Employee Tools
	\$4,980 Fine Arts	Not Noted - Fine Arts	\$0 - Drone
	\$494,300 Fire Equipment	Not Noted - Fire Equipment	
	\$45,000 Miscellaneous Outdoor Property	Not Noted - Miscellaneous Outdoor Property	
	\$9,000 Miscellaneous Scheduled Property	Not Noted - Miscellaneous Scheduled Property	
	\$73,500 Radio Equipment	Not Noted - Radio Equipment	\$0 - Radio Equipment
	\$3,593,403 Property in the Open	Not Noted - Property in the Open	
	\$1,500,000 Newly Acquired		\$250,000 Newly Acquired
	\$20,000 Pollution Cleanup		\$10,000 Pollution Cleanup
	\$50,000 Rental Reimbursement		\$5,000/Item, \$25,000/Occurrence- Rental Reimbursement
	\$250,000 Leased / Rented		\$50,000 Leased / Rented
	\$250,000 Leased / Rented Max. Per Item		\$50,000 Leased / Rented Max. Per Item
Risk Of Direct Physical Loss:	Yes	Yes	Yes
Incl. Earthquake / Flood If Purchased with Property:	Yes	No	No
Coinsurance Provision:	100%	80%	80%
Valuation:	Varies	Not Noted	ACV - Please advise if you want any fine arts scheduled I will need a limit -
	Stated Amount (Fine Arts_		\$1,000 AOP Per Occurrence, \$25,000 W/H Ded : Misc Property -
Deductible:	\$1,000 Per Occurrence	\$500 Per Occurrence	\$2,500 AOP Ded, \$25,000 W/H Ded: Contractors Equipment
	24Hrs - Waiting Period On Rental Expenses	72 Hours Waiting Period On Rental Expenses	
<b>Inland Marine Premium:</b>	<b>Included</b>	<b>\$4,549</b>	<b>\$6,555</b>
<b>Quote Option</b>			QUOTE OPTION : Inland Marine quote with a \$1K AOP deductible and \$1M limit/\$25K ded on Flood/Quake (\$500K limit on each CE and MP) is \$8,193

**CRIME COVERAGE**

	<b>LARM</b>	<b>Jones Group</b>	<b>Marsh</b>
Insure:	LARM	CWG	Travelers Property Casualty Company of America
<b>Public Employees Blanket Form:</b>	Yes	Not Quoted	Yes
Incl. Faithful Performance:	Yes		Yes
Incl. All Employees, Non-Compensated Officers & City Commission:	Yes		Yes
Coverage Excess Of Individual Bonds Required By Law Or Ordinance:	No		No
Limit:	\$50,000 Per Loss		\$250,000 Per Loss
Deductible:	None		\$1,000 Per Loss
<b>Crime Premium:</b>	<b>Included</b>		<b>\$2,091</b>
<b>Forgery &amp; Alteration Limit:</b>	\$50,000 Per Loss		\$250,000 Per Loss
Forgery & Alteration Deductible:	None		\$1,000 Per Loss
Forgery & Alteration Premium:	<b>Included</b>		<b>Included</b>
<b>Public Employee Dishonesty Limit:</b>	\$50,000 Per Loss		\$250,000 Per Loss
Public Employee Dishonesty Deductible:	None		\$1,000 Per Loss
<b>Public Employee Dishonesty Premium:</b>	<b>Included</b>		<b>Included</b>
<b>Money &amp; Security Inside Limit:</b>	\$50,000 Per Loss		\$250,000 Per Loss
Money & Security Outside Limit:	\$50,000 Per Loss		\$250,000 Per Loss
Money & Security Deductible:	None		\$1,000 Per Loss
<b>Money &amp; Security Premium:</b>	<b>Included</b>		<b>Included</b>
<b>Computer Fraud:</b>	\$50,000 Per Loss		\$250,000 Per Loss
Incl. Wire Transfers:	Yes		Yes
Computer Fraud Deductible:	None		\$1,000 Per Loss
<b>Computer Fraud Premium:</b>	<b>Included</b>		<b>Included</b>

\$250,000 Limits available with additional underwriting

**GENERAL LIABILITY**

	<b>LARM</b>	<b>Jones Group</b>	<b>Marsh</b>
Insurer:	LARM	CWG	The Travelers Indemnity Company of Connecticut
Commercial General Form:	Yes	Yes	Yes
Occurrence Format:	Yes	Yes	Yes
Limits -	\$5,000,000 Each Occurrence	\$1,000,000 Each Occurrence	\$1,000,000 Each Occurrence
	\$5,000,000 Personal / Adv. Inj.	\$1,000,000 Personal / Adv. Inj.	\$1,000,000 Personal / Adv. Inj.
	\$5,000,000 General Aggregate	\$2,000,000 General Aggregate	\$2,000,000 General Aggregate
	\$5,000,000 Prod / Comp.Op. Agg.	\$2,000,000 Prod / Comp.Op. Agg.	\$2,000,000 Prod / Comp.Op. Agg.
	\$100,000 Property Damage Legal	\$100,000 Property Damage Legal	\$300,000 Property Damage Legal
	\$5,000 Medical Pay / Each Person	\$5,000 Medical Pay / Each Person	Excluded Medical Pay / Each Person
Deductible:	None	None	None
Includes Tort Liability Endors:	Yes, Limits Per Tort Claim Act When Applicable	Yes, Limits Per Tort Claim Act When Applicable	Yes, Limits Per Tort Claim Act When Applicable
Incl. City For Acts Of Independent Contractors:	Not Included	Not Included	Yes
Supplementary Defense Costs:	Yes	Yes	Yes
Sexual Abuse / Molestation:	\$1,000,000 Each Claim	Can Add If Requested	Excluded
	\$2,000,000 Aggregate		
Incl. Special Events:	Yes	Yes	Yes
Include Paramedics / EMTs (withing scope)	Yes	Yes	Not Noted
Sewer Backup:	Opt out can be added for \$600 for \$75,000Limit	Included	\$100,000 Limit
Incl. Thrift Store Operations	Yes	No	Not Noted
Fellow Employee Exclusion:	Unclear	Included	No
Incl. Services of Employed Engineers / Architects:	Yes	Yes	No
Excl. Law Enforcement:	Insured Separately	Insured Separately	Insured Separately
Incl. Host Liquor Liability:	No	Yes	No
Incl. BI/PD From Chemical Spraying:	\$300,000 Limit	Yes	Yes
Incl. Owned / Non-Owned Watercraft:	Yes	Yes	Yes
Pollution Liability (Sudden and Accidental):	Yes with limitations	Can Be Added	No
Incl. Drone Liability:	Yes	Can Be Added	No
Incl. Cemetery Professional:	Yes	Yes	Not Noted
Incl. Failure To Supply:	No	Can Be Added	\$100,000 Limit
Operations Included	All City Operations	Fire Only	All City Operations
Premium Subject To Audit:	No	No	No
<b>G.L. Premium:</b>	<b>\$64,389</b>	<b>\$1,170</b>	<b>\$31,787</b>
	With 3-Year Resolution & 180 Day Notice		
<b>Employee Benefit Liability</b>			
Coverage Form:	Occurrence	Occurrence	Claims Made 10/1/25 Retroactive Date
Limits:	\$1,000,000 Each Wrongful Act	Included with Public Officials Liability	\$1,000,000 Each Wrongful Act
	\$1,000,000 Aggregate		\$3,000,000 Aggregate
Deductible:	None		\$1,000 Per Employee
<b>E.B.L. Premium:</b>	Included	Included	<b>\$192</b>

**Deadly Weapon Response**

	<b>LARM</b>	<b>Jones Group</b>	<b>Marsh</b>
Insurer:	LARM	Not Quoted	Not Quoted
Form:	Claims Made		
Retro Date:	10/1/2020		
Limits Of Liability:	\$500,000 Each Deadly Weapon Event		
	\$1,000,000 Aggregate		
Sublimits:	\$250,000 Crisis Management		
	\$250,000 Business Interruption		
	\$250,000 Extra Expense		
	\$250,000 Funeral Expenses		
	\$500,000 Transit Extension		
	\$25,000 Medical Expenses Per Person		
	\$500,000 Medical Expenses Aggregate		
	\$50,000 Death and Dismemberment		
	\$500,000 D&D Aggregate		
	\$10,000 Each Deadly Weapon Event		
<b>Annual Premium</b>	<b>Included</b>	<b>Not Quoted</b>	<b>Not Quoted</b>

**LAW ENFORCEMENT LIABILITY**

	<b>LARM</b>	<b>Jones Group</b>	<b>Marsh</b>
Insurer:	LARM	Not Quoted	The Travelers Indemnity Company of Connecticut
Form:	Occurrence		Occurrence
Limits Of Liability:	\$5,000,000 Each Occurrence		\$1,000,000 Each Occurrence
	\$5,000,000 Aggregate		\$1,000,000 Aggregate
Part of G.L. Limits:	No		No
Incl. Tort Liability Endors:	Yes, Limits Per Tort Claim Act When Applicable		Yes, Limits Per Tort Claim Act When Applicable
Deductible:	\$2,500 Per Loss		\$15,000 Per Loss
	Including Defense Expenses		\$15,000 For Defense Expenses
Wrongful Act Coverage:	Yes, Incl. Errors, Omissions & Negligent Acts		Yes, Incl. Errors, Omissions & Negligent Acts
Incl. Discrimination by Law Enforcement Personnel:	Yes		Yes
Incl. Civil Rights Allegations:	Yes		Yes
Awarded Plaintiff Fees Incl. as "Damages":	No		Yes
Moonlighting Activities:			
Coverage For Officer:	Included		Included
Coverage For Entity:	Included		Included
Supplementary Defense Cost:	Yes		Yes
"Pay On Behalf Of Insured":	Yes		Yes
Incl. Insurers Duty To Defend:	Yes		Yes
Incl. Police Canine Liability	Yes		Yes
Incl. Insured's Right To Settle:	No		No
Incl. Necessary Intentional Acts:	Yes		Yes
Sexual Abuse / Molestation:	\$1,000,000 Each Claim; \$2,000,000 Aggregate		No
Incl. Criminal Allegations Until Finding Of Fact:	Yes		Yes
Incl. List of Approved Counsel:	Yes		No
<b>L.E.L. Premium:</b>	<b>\$8,387</b>	<b>Not Quoted</b>	<b>\$14,323</b>

With 3-Year Resolution &amp; 180 Day Notice

**PUBLIC MANAGEMENT LIABILITY**

	<b>LARM</b>	<b>Jones Group</b>	<b>Marsh</b>
Insurer:	LARM	CWG	The Travelers Indemnity Company of Connecticut
Form:	Occurrence	Occurrence	Occurrence
Limits Of Liability:	\$5,000,000 Each Wrongful Act	\$1,000,000 Each Wrongful Act	\$1,000,000 Each Wrongful Act
	\$5,000,000 Aggregate	\$2,000,000 Aggregate	\$1,000,000 Aggregate
Limits Shared with EPL:	No	Yes	No
Deductible:	\$2,500 Each Wrongful Act	\$1,000 Each Wrongful Act	\$1,000 Each Wrongful Act
Defense Cost Are Supplemental:	Yes	No	No
"Pay On Behalf Of Insured":	Yes	Yes	Yes
Incl. Insurer's Duty To Defend:	Yes	Yes	Yes
Wrongful Act Coverage:	Yes	Yes	Yes
Incl. Discrimination:	Yes	No	Yes
Incl. Civil Rights Violations:	Yes	No	Yes
Incl. Sexual Harassment (No B.I.):	Yes	No	No
Incl. Non-Monetary Demands:	Yes	No	Yes
Incl. Insured's Right To Settle:	No	Not Noted	No
Incl. Land Use, Planning & Zoning:	Yes	Not Noted	Yes
Incl. "All Employees":	Yes	Yes	Yes
Incl. Authorized Volunteers:	Yes	Yes	Yes
Incl. All Boards & Commissions:	Yes	Yes	No
Incl. Public Works Board:	Yes	Yes	Not Noted
Awarded Plaintiff Fees Incl. as "Damages":	No	Yes	Yes
Incl. Employed Notaries:	Yes	Yes	Yes
Operations Included	All City Operations	Fire Only	All City Operations
<b>P.E.M.L. Premium:</b>	<b>\$13,403</b>	<b>\$110</b>	<b>\$6,042</b>
	With 3-Year Resolution & 180 Day Notice		

**EMPLOYMENT PRACTICES LIABILITY**

	<b>LARM</b>	<b>Jones Group</b>	<b>Marsh</b>
Insurer:	LARM	Not Quoted	The Travelers Indemnity Company of Connecticut
Form:	Occurrence		Claims Made
Retro Date:			45,931.00
Limits Of Liability:	\$5,000,000 Each Wrongful Act		\$1,000,000 Each Wrongful Act
	\$5,000,000 Aggregate		\$1,000,000 Aggregate
Limits Included in PEMPL:	Yes - Shared Limits		No -Separate Limits
Deductible:	\$2,500 Each Wrongful Act		\$15,000 Each Wrongful Act
Wrongful Act Coverage:	Yes		Yes
Defense Cost Are Supplemental:	Yes		No
"Pay On Behalf Of Insured":	Yes		Yes
Incl. Insurer's Duty To Defend:	Yes		Yes
Incl. Discrimination:	Yes		Yes
Incl. Civil Rights Violations:	Yes		Yes
Incl. Sexual Harassment (No B.I.):	Yes		Yes
Extends Coverage To Advisory and Public Works Boards:	Yes		Yes
Incl. Wrongful Termination:	Yes		Yes
Incl. Failure To Promote & Hire:	Yes		Yes
Incl. Insured's Right To Settle:	No		No
Incl. Back Wages & Benefits:	Yes		Yes
Incl. Defense For Non-Monetary Claims:	Yes		Yes
Definition Of Claim Incl. EEOC or Similar Administrative Hearings:	Yes		Definition Of Claim Incl. EEOC or Similar Administrative Hearings:
Incl. Authorized Volunteers:	Yes		Yes
Incl. "All Employees":	No		Yes
Awarded Plaintiff Fees Included as "Damages":	No		Yes
<b>E.P.L. Premium:</b>	<b>Included</b>	<b>Not Quoted</b>	<b>\$9,867</b>

<b>AUTOMOBILE</b>	<b>LARM</b>	<b>Jones Group</b>	<b>Marsh</b>
Insurer:	LARM	CWG	The Travelers Indemnity Company
Liability Limits:	\$5,000,000 Combined Single Limit	\$1,000,000 Combined Single Limit	\$1,000,000 Combined Single Limit
Incl. Tort Liability Endors:	Yes, Limits Per Tort Claim Act When Applicable	Yes, Limits Per Tort Claim Act When Applicable	Yes, Limits Per Tort Claim Act When Applicable
Uninsured / Under. Motorist:	\$100,000 Each Occurrence	\$1,000,000 Each Occurrence	\$100,000 Each Occurrence
Medical Payments:	\$5,000 All Vehicles	\$10,000 All Vehicles	\$5,000 All Vehicles
Symbol "One" Liability:	Yes	Yes	Yes
Hired & Non-Owned Liability:	Included	Included	Included
Substitute Vehicles:	Included	Included	Included
Employees As Insureds:	Yes	Yes	No can be for an additional Premium
Volunteers As Insureds:	Yes	Unclear	Yes
Fellow Employee Exclusion:	Included	Included	No can be for an additional Premium
Fleet Basis (No Audit Or Additional Premium During Policy Period for Units Under \$100,000):	Must Report	Not Noted	This policy is composite rated. So no charge for vehicles midterm. But the policy will be audited at the end of the term.
Incl. Necessary Intentional Acts by Police/Fire:	Yes	Yes	Yes
Include Police Ride-Along Operations:	Yes	Yes	Yes
Include "Busy Wheels" Operations	Yes	No	Not Noted
Operations Included	All City Operations	Fire Only	All City Operations
Auto Liability Deductible:	None	None	None
<b>Auto Liability Premium:</b>	<b>\$21,166</b>	<b>\$1,137</b>	<b>\$39,799</b>
	With 3-Year Resolution		
<b>Physical Damage Per Schedule:</b>	Yes	Fire Only	Yes
Form:	Occurrence	Occurrence	Occurrence
Auto Physical Damage Deductible-			
Comprehensive:	\$2,500 If Scheduled \$2,500 Comprehensive Max Per Occurrence	\$1,000 Per Vehicle No Comprehensive Max Per Occurrence	\$2,500 Per Vehicle No Comprehensive Max Per Occurrence
Collision:	\$2,500 Per Vehicle	\$1,000 Per Vehicle	\$2,500 Per Vehicle
Incl. Emergency Equipment Attached To Vehicles:	Yes	Yes	Yes
Incl. Freezing:	Yes	Yes	No
Incl. Towing And Labor	\$1,000 Limit	\$2,500 Limit	No
Valuation:	Stated Value Up To Scheduled Limit On Emerg. Fire Vehicles & ACV on all others	RCV Up To Scheduled Limit On Emerg. Fire Vehicles &-N/A no emergency/FD vehicles ACV on all others	Stated Value Up To Scheduled Limit On Emerg. Fire Vehicles & ACV on all others
Fleet Basis (No Audit Or Additional Premium During Policy Period for Units Under \$100,000):	Not Applicable	Not Noted	This policy is composite rated. So no charge for vehicles midterm. But the policy will be audited at the end of the term.
Rental Coverage:	\$50,000	Actual Cash Value	Yes
Commandeered Vehicles:	\$250,000	Actual Cash Value	Covered on garagekeepers coverage.
<b>Physical Damage Premium:</b>	<b>\$50,890</b>	<b>\$6,303</b>	<b>\$28,437</b>
	With 3-Year Resolution & 180 Day Notice		
<b>Hired/Borrowed Physical Damage:</b>	\$50,000 Limit Per Auto \$2,500 Comprehensive Deductible \$2,500 Collision Deductible	Actual Cash Value Limit Per Auto \$100 Comprehensive Deductible \$500 Collision Deductible	No Limit - Limit Per Auto \$1,000 Comprehensive Deductible \$1,000 Collision Deductible
Hired/Borrowed Physical Damage Premium:	<b>Included</b>	<b>Included</b>	<b>Included</b>
<b>Garagekeepers Legal Liability:</b>	\$50,000 Limit Comprehensive \$50,000 Limit Collision	Not Quoted	\$250,000 Limit Comprehensive \$250,000 Limit Collision
Primary Basis:	No		Yes
	\$2,500 Comprehensive Deductible		\$1,500 Comprehensive Deductible
	\$2,500 Comprehensive Max Per Loss		\$5,500 Comprehensive Max Per Loss
	\$2,500 Collision Deductible		\$1,000 Collision Deductible
Garagekeepers Legal Liability Premium:	<b>Included</b>	<b>Not Quoted</b>	<b>\$1,621</b>

**UMBRELLA LIABILITY**

	<b>LARM</b>	<b>Jones Group</b>	<b>Marsh</b>
Insurer:	Not Needed with increase limits	CWG	Travelers Property Casualty Company of America
Form:		Excess	Umbrella
Claims Made / Occurrence:		Follows Form	Follows Form
Limits Of Liability:		\$4,000,000 Each Occurrence	\$5,000,000 Each Occurrence
		\$4,000,000 Personal / Advertising Injury	\$5,000,000 Personal / Advertising Injury
		\$8,000,000 General Aggregate	\$5,000,000 General Aggregate
<u>Program In Excess Of -</u>			
General Liability:		Yes - Fire Only	Yes
Cemetery Liability		Not Applicable	Yes
Automobile Liability:		Yes - Fire Only	Yes
Employee Benefit Liability:		Yes	Yes
Public Official Liability:		Yes - Fire Only	Yes
Law Enforcement Liability:		Not Applicable	Yes
Employment Practices Liability:		Not Applicable	Yes
Abuse / Molestation Liability:		Not Applicable	No
Employers Liability:		No	Yes
Incl. Following Forms:		Yes	Yes
Supplemental Defense Costs:		No	Yes
Pay On Behalf Of:		Indemnify follow form	Indemnify follow form
Incl. Tort Liability Endorsement:		Yes, Limits Per Tort Claim Act When Applicable	Yes, Limits Per Tort Claim Act When Applicable
Policy Is To Be "Non-Auditable":		Yes	Yes
<b>Umbrella Premium:</b>	<b>N/A</b>	<b>\$791</b>	<b>\$26,467</b>

**CYBER**

	<b>LARM</b>	<b>Jones Group</b>	<b>Marsh</b>
Insurer:	Beazley Services	Cowbell	Beazley Insurance Company, Inc.
Form:	Claims Made	Occurrence	Claims Made
	Retroactive Date Not Noted	N/A	Policy Inception - Continuity Date Retroactive Date
<u>Breach Response Aggregate Limit:</u>	\$1,000,000	\$1,000,000	\$1,000,000
		\$1,000,000 Business Interruption	
<u>First Party Limits:</u>	\$750,000 Business Interruption (Security Breach)		\$100,000 Business Interruption (Security Breach)
	\$500,000 Business Interruption (System Failure)		\$100,000 Business Interruption (System Failure)
	\$750,000 Dependent Business Interruption (Security Breach)		\$100,000 Dependent Business Interruption (Security Breach)
	\$100,000 Dependent Business Interruption (System Failure)		\$100,000 Dependent Business Interruption (System Failure)
	\$750,000 Cyber Extortion	\$500,000 Cyber Extortion	\$100,000 Cyber Extortion
	\$750,000 Data Recovery	\$1,000,000 Data Recovery	\$100,000 Data Recovery
		\$50,000 Crisis Management / Breach Response	\$1,000,000 Crisis Management / Breach Response
	\$ 0 Bricking		\$1,000,000 Bricking
	\$750,000 First Party Aggregate Limit		\$1,000,000 First Party Aggregate Limit
<u>Third Party Liability:</u>	\$2,000,000 Data and Network Liability	\$1,000,000 Data and Network Liability	\$1,000,000 Data and Network Liability
	\$2,000,000 Regulatory Defense & Penalties	\$1,000,000 Regulatory Defense & Penalties	\$1,000,000 Regulatory Defense & Penalties
	\$2,000,000 Payment Card Liabilities and Cost		\$1,000,000 Payment Card Liabilities and Cost
	\$2,000,000 Media Liability		\$1,000,000 Media Liability
	\$2,000,000 Third Party Aggregate Limit		\$1,000,000 Third Party Aggregate Limit
<u>eCrime</u>	\$75,000 Fraudulent Instruction		\$250,000 Fraudulent Instruction
	\$75,000 Funds Transfer Fraud		\$250,000 Funds Transfer Fraud
	\$75,000 Telephone Fraud		\$250,000 Telephone Fraud
	\$75,000 eCrime Annual Aggregate		There is no ecrime aggregate - see attached quote
Deductible:	\$50,000 Per Loss	\$2,500 Per Loss	Dependent on claim. Please refer to quote. Main policy is \$10,000 each incident, claim or loss - Per Loss
Incl. non-compliance of EU Data Protection Regulation	Not Noted		Yes
Incl. Terrorism:	Yes	Yes	Yes
Supplemental Defense Costs:	No		Yes
Pay On Behalf Of:	Indemnify		Yes
Annual Premium:	<b>Included</b>	<b>\$6,040</b>	<b>\$7,150</b>

**WORKERS' COMPENSATION**

	<b>LARM</b>	<b>Jones Group</b>	<b>Marsh</b>
Insurer:	LARM	Bitco	The Travelers Indemnity Company of Connecticut
Coverage A Limits	Statutory	Statutory	Statutory
Employers Liability Limits	\$100,000 Each Accident	\$500,000 Each Accident	\$100,000 Each Accident
	\$100,000 Disease - Each Employee	\$500,000 Disease - Each Employee	\$100,000 Disease - Each Employee
	\$500,000 Disease - Policy Limit	\$500,000 Disease - Policy Limit	\$1,000,000 Disease - Policy Limit
Deductible:	None	None	None
Experience Mod:	.80	N/A	
Total Payrolls	\$4,995,182	\$4,904,959	\$4,904,959
Class Codes per RFP	Yes	Yes	Yes
Terrorism:	Included	Included	Included
<b>Workers' Compensation Annual Premium:</b>	<b>\$117,034</b>	<b>\$97,917</b>	<b>\$86,526</b>

With 3-Year Resolution &amp; 180 Day Notice



Parcel Information	
<b>Parcel ID</b>	006527500
<b>Links</b>	<a href="#">Photo #1</a> <a href="#">Sketch #1</a>
<b>Area #</b>	
<b>Current Owner</b>	OTTE, CHRIS & MARCIA ET AL
<b>Mailing Address</b>	1960 COUNTY ROAD I WAHOO, NE 68066-4074
<b>Situs Address</b>	456 W 9TH
<b>Tax District</b>	019
<b>School District</b>	6130 (WAHOO 39)
<b>Legal Description</b>	LOT 7 BAL LOT 8 BLK 6 WAHLSTROMS ADDITION WAHOO
<b>Class</b>	Single Family

Current Value Information			
Land Value	Dwelling Value	Improvement Value	Total Value
\$26,550	\$80,174	\$0	\$106,724

Prior Year Value Information				
Year	Land Value	Dwelling Value	Improvement Value	Total Value
2024	\$26,550	\$76,445	\$0	\$102,995
2023	\$26,550	\$75,142	\$0	\$101,692
2022	\$26,550	\$27,749	\$0	\$54,299
2021	\$26,550	\$24,157	\$0	\$50,707
2020	\$26,550	\$23,371	\$0	\$49,921



Yearly Tax Information		
Year	Amount	Levy
2024	\$1,388.38	1.724617

2024 Tax Levy	
Description	Rate
COUNTY GENERAL	0.212847
COUNTY BLDG	0.001797
COUNTY FLOOD CONTROL	0.001379
COUNTY LAW ENFORCEMENT BOND	0.018303
WAHOO 39 GENERAL	0.892857
WAHOO 39 SPECIAL BLDG	0.000000
WAHOO 39 QUAL CAP PURPOSE K-12	0.000000
ESU #2 GENERAL	0.015000
SOUTHEAST COMMUNITY COLLEGE GENERAL	0.000000
SOUTHEAST COMMUNITY COLLEGE CAP IMPT FUND	0.020000
PLATTE NORTH GENERAL	0.025768
WAHOO CITY GENERAL	0.507838
WAHOO CITY BOND FUND	0.000000
WAHOO AIRPORT AUTHORITY GENERAL	0.013573
WAHOO AIRPORT AUTHORITY BOND	0.010180
AG SOCIETY	0.005915
AG SOCIETY IMPROVEMENT FUND	0.000757

Sales Information					
Sale Date	Sale Price	Book & Page	Seller	Buyer	Other Parcels
8/5/2024	\$75,000.00	609 / 1341	HOPPE, WELDON, PR OF THE ESTATE OF LINDA JO LARSON	OTTE, CHRIS & MARCIA ET AL	
12/29/2023	\$0.00	608 / 914	VITAL STATISTICS	LARSON, LINDA JO	



Residential Building Information			
<b>Occupancy Code</b>	101 (Single-Family / Owner Occupied)	<b>Condition Code</b>	N/A
<b>Year Built</b>	1926	<b>Rooms Above Ground</b>	N/A
<b>Style</b>	1 Story Frame	<b>Rooms Below Ground</b>	N/A
<b>Main Area</b>	1,378	<b>Bedroom #</b>	N/A
<b>Total Living Area</b>	1,378	<b>Bathroom #</b>	1
<b>Length</b>	0	<b>Foundation</b>	None
<b>Width</b>	0	<b>Exterior Walls</b>	Frame, Siding
<b>Basement</b>	Full	<b>Roof</b>	Slate
<b>Basement Area</b>	1378.0000	<b>Interior Walls</b>	N/A
<b>Bsmt Floor Adj</b>	N/A	<b>Flooring</b>	N/A
<b>Heating</b>	Yes	<b>Architectural Design</b>	N/A
<b>AC</b>	No	<b>Single Siding</b>	N/A
<b>Attic</b>	None		

Porches					
Area	Style	Bsmt SF	QTRS SF	Qtrs Style	Qtrs AC
144	Stoop/Deck w/ Railing	0	0	Frame	No

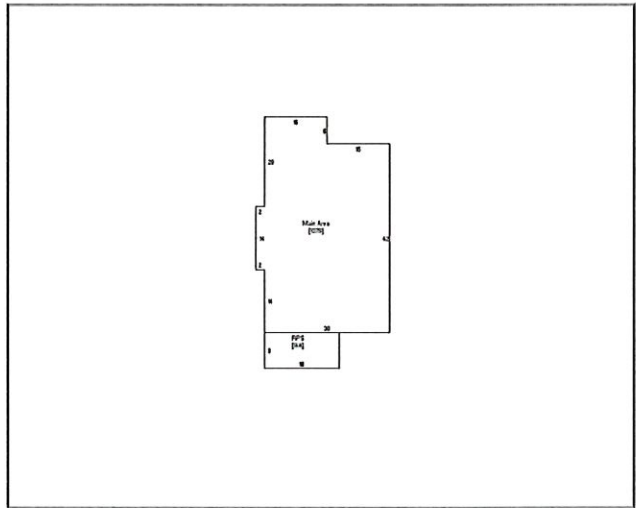
Plumbing			
Style	Count	Fixtures	Bathrooms
Standard Bath - 3 Fixt	N/A	3	1
		3	1

Deck and Patio	
Style	SF Area
Asph/Wd Roof OH	N/A

Garage 1 of 1	
<b>Year Built</b>	1926
<b>Style</b>	Det Frame
<b>WxL</b>	18 x 20
<b>Area</b>	360
<b>Basement SF</b>	0
<b>Qtrs Over Style</b>	None
<b>Qtrs Over SF</b>	0
<b>Qtrs Over AC (SF)</b>	0
<b>Door openers</b>	0

Land Information		
<b>Lot Basis</b>	<b>Square Feet</b>	<b>Acres</b>
Sq. Ft x Rate	9,360	0.22

**Photo**

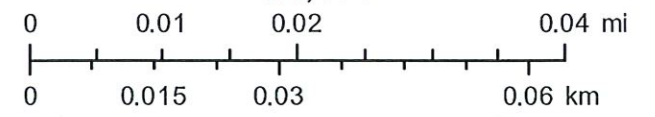




September 9, 2025  
11:21 AM

DISCLAIMER: This map is not intended for conveyances, nor is it a legal survey. The information is presented on a best-efforts basis, and should not be relied upon for making financial, survey, legal or other commitments.

1:1,181



- |                     |               |             |             |                          |
|---------------------|---------------|-------------|-------------|--------------------------|
| Transformers - Pad  | Switch Points | Open        | Light Poles | Rental                   |
| Transformers - Pole | Closed        | Blank Field | Unmetered   | Red Tagged Utility Poles |
|                     |               | Metered     |             |                          |



**CHARLES SURVEYING LLC.**

JEREMY A. CHARLES

21 N. 3RD CIRCLE

MEAD NE 68041

(402) 443-6955

DETAIL

ALLEY IN BLOCK 7, WAHLSTROM'S ADD., CITY OF WAHOO, SAUNDERS COUNTY, NEBRASKA.

scale:	1"=100'
date:	09/08/2025
drawn by:	JC
field wk:	JC/CB
sheet:	1 of 1

**TABLET USE POLICY**  
**(Attachment to City of Wahoo Personnel Policy)**



**EFFECTIVE DATE:** 9/9/2025  
**LAST REVIEWED:** 9/9/2025  
**APPROVED BY:** City Council on 9/9/2025

**Purpose:**

This policy establishes guidelines for the appropriate use, care, and security of tablets assigned to City of Wahoo employees. This policy ensures that city-owned tablets are used efficiently, securely, and in compliance with applicable laws and regulations while supporting legitimate business functions.

**Scope:**

This policy applies to all City of Wahoo employees, contractors, volunteers, and authorized users who are assigned or granted access to city-owned tablets. This includes both full-time and part-time personnel across all city departments.

**Definitions:**

1. Tablet: A portable computing device with a touch screen interface, including but not limited to iPads, Android tablets, and Windows tablets owned by the City of Wahoo.
2. Authorized User: Any individual who has been formally assigned a tablet through the proper checkout process and has acknowledged this policy.
3. City Data: Any information created, stored, processed, or transmitted using city resources, including but not limited to emails, text messages, chats, documents, databases, and applications.

**Policy Statement:**

City-owned tablets are valuable resources provided to employees to enhance productivity and support official city business. All users must handle these devices responsibly and in accordance with this policy.

1. ACCEPTABLE USE

a. Permitted Uses:

- i. Conducting official city business
- ii. Accessing city applications, databases, and systems
- iii. Communication related to city operations
- iv. Professional development activities approved by supervisors
- v. Emergency communications during non-business hours when job-related

b. Prohibited Uses:

- i. Personal entertainment, gaming, or social media (except as required for official city social media accounts)
- ii. Downloading or installing unauthorized applications
- iii. Accessing inappropriate, offensive, or illegal content
- iv. Using the device for personal business or commercial activities
- v. Sharing login credentials or allowing unauthorized access
- vi. Bypassing security measures or attempting to "jailbreak" or "root" the device
- vii. Using the device in any manner that violates city policies, state, or federal law

## 2. SECURITY REQUIREMENTS

- a. User Responsibilities:
  - i. Enable and maintain a strong passcode or biometric lock
  - ii. Install security updates promptly when notified
  - iii. Report lost, stolen, or damaged tablets immediately to HR and to supervisor
  - iv. Ensure the device locks automatically after periods of inactivity
  - v. Never leave the tablet unattended in vehicles or unsecured areas
  - vi. Back up important city data according to IT department guidelines
- b. Technical Security:
  - i. All tablets will have mobile device management (MDM) software installed
  - ii. Users must not attempt to disable or circumvent security software
  - iii. Remote wipe capabilities will be enabled for lost or stolen devices
  - iv. City reserves the right to monitor device usage for security and policy compliance

## 3. CARE AND MAINTENANCE

- a. User Obligations:
  - i. Handle the device with appropriate care to prevent damage
  - ii. Keep the device clean and in good working condition
  - iii. Use protective cases provided by the city
  - iv. Charge the device regularly and maintain adequate battery life for work duties
  - v. Report technical issues promptly to the IT department and your supervisor
  - vi. Follow proper shutdown procedures
- b. Prohibited Actions:
  - i. Modifying hardware components
  - ii. Exposing the device to extreme temperatures, moisture, or hazardous conditions
  - iii. Lending the device to family members, friends, or unauthorized individuals
  - iv. Using non-approved accessories that could damage the device

## 4. DATA MANAGEMENT

- a. All city data stored on tablets remains the property of the City of Wahoo
- b. Users must not store personal files or data on city-owned tablets
- c. Regular backups of important data should be performed as directed by IT
- d. Upon separation from employment, all city data must be properly transferred

## 5. PRIVACY AND MONITORING

- a. Users should have no expectation of privacy when using city-owned tablets
- b. The city reserves the right to monitor, access, and review tablet usage
- c. All communications and data created on city tablets may be subject to public records requests as per Nebraska Public Records Law
- d. Personal use of city tablets may result in personal communications becoming subject to disclosure

## 6. VIOLATIONS AND CONSEQUENCES

- a. Violations of this policy may result in:
  - i. Verbal or written warning
  - ii. Suspension of tablet privileges
  - iii. Disciplinary action up to and including termination
  - iv. Personal liability for repair or replacement costs
  - v. Legal action if warranted

**Checkout and Return Procedures:**

All tablets must be properly checked out and returned through the designated tracking system. Employees are responsible for the device from checkout until proper return and acknowledgment by the HR department or designated personnel.

**Support and Questions:**

For technical support, policy questions, or to report issues, contact:

- HR Department: Buffy Baker, 402-443-3222, Ext. 24
- Email: [Help@reditech.com](mailto:Help@reditech.com) or submit a ticket using the app on the tablet
- Help Desk: Reditech - 402-933-6887

---

I acknowledge that I have read, understood, and agree to comply with the City of Wahoo Tablet Use Policy. I understand that violation of this policy may result in disciplinary action and/or personal liability for damages. I agree to handle the assigned tablet responsibly and return it in good condition upon request or separation from employment.

Employee Signature: \_\_\_\_\_ Date: \_\_\_\_\_

**TABLET CHECKOUT/RETURN TRACKING LOG  
DOCUMENTATION FORM**



**Complete this form each time a tablet is distributed to an employee and returned.**

**Employee Information:**

Employee Name: \_\_\_\_\_ Employee #: \_\_\_\_\_

Email Address: \_\_\_\_\_ Position: \_\_\_\_\_

Department: \_\_\_\_\_ Supervisor: \_\_\_\_\_

**TABLET CHECKOUT TRACKING LOG**

**Device Information:**

Tablet Make/Model: \_\_\_\_\_ Serial Number: \_\_\_\_\_

Tablet Cell Number: \_\_\_\_\_

Accessories Included: \_\_\_\_\_

Condition at checkout: \_\_\_\_\_

**Checkout Signatures:**

Employee Signature: \_\_\_\_\_ Date: \_\_\_\_\_

Supervisor or HR Signature: \_\_\_\_\_ Date: \_\_\_\_\_

**TABLET RETURN TRACKING LOG**

Return Date: \_\_\_\_\_ Returned By (Employee): \_\_\_\_\_

Verify that Serial Number matches from checkout

Condition at Return: \_\_\_\_\_ Accessories Returned: \_\_\_\_\_

Issues/Damage Noted: \_\_\_\_\_

**Return Signatures:**

Employee Signature: \_\_\_\_\_ Date: \_\_\_\_\_

Supervisor or HR Signature: \_\_\_\_\_ Date: \_\_\_\_\_

**RESOLUTION NO. 2025-10**

**CITY OF WAHOO MASTER FEE RESOLUTION**

WHEREAS, it is necessary for the staff of the City of Wahoo to provide services, materials and products, permits, and facilities for use by the public, that will be reimbursed by said members of the public, and,

WHEREAS, it is necessary for the Mayor and City Council of the City of Wahoo to establish and adopt, by resolution, a schedule of appropriate fees and charges as are necessary to recover City costs in providing City services, materials, permits, and products,

WHEREAS, it is desirable to maintain a Master Fee Schedule which provides a compilation of fees and charges assessed by the departments of the City of Wahoo, as attached herein,

WHEREAS, the City did, on March 11, 2021 adopt a Master Fee Scheduled, containing Attachments 1 to 9 as follows:

- Attachment 1: General Fund Fees and Charges
- Attachment 2: Police Department Fees and Charges
- Attachment 3: Street Department Fees and Charges
- Attachment 4: Cemetery Fees and Charges
- Attachment 5: Park and Recreation Fees and Charges
- Attachment 6: Rescue Squad Fees and Charges
- Attachment 7: Wahoo Public Library Fees and Charges
- Attachment 8: Building Department Fees and Charges
- Attachment 9: Zoning Department Fees and Charges

WHEREAS, it is necessary to update particular Attachments to adopt changes to said fees and charges, specifically Attachment 4: Cemetery Fees and Charges.

THEREFORE, BE IT RESOLVED by the Mayor and Council of the City of Wahoo that the following amendments to Attachment 4: Cemetery Fees and Charges are hereby adopted and are to be incorporated into the City of Wahoo's Master Fee Resolution, and

BE IT FURTHER RESOLVED that the effective date of this amendment shall be May 29, 2024.

PASSED AND APPROVED this 28 Day of May 2024.

---

Gerald D Johnson, Mayor

ATTEST:

---

Christina Fasel, City Clerk

[SEAL]

**ATTACHMENT 4 TO MASTER FEE SCHEDULE**

**A. Grave Spaces**

K of H Cemetery (Sunrise Cemetery)	\$400.00 per space
Sunrise North Cemetery (Sunrise North Cemetery)	\$400.00 per space
Wahoo Cemetery (Greenwood Cemetery)	\$400.00 per space
K of H Cemetery (Sunrise Cemetery), Babyland	\$200.00 per space
Wahoo Cemetery (Greenwood Cemetery)	
Potter's Field	\$200.00 per space

**B. Grave Opening and Closing Fees**

*NOTE: Saturday morning open/close is not available on holiday weekends observed by the City of Wahoo. Grave openings and/or closings that need to be completed AFTER 4:00pm on a weekday or after Noon on a Saturday will incur an additional \$200.00 charge.*

Graves for children under five years of age	\$300.00 per grave
Saturday morning fee (8:00 a.m. to Noon)	+\$400.00
All graves for persons over five years of age	\$600.00 per grave
Saturday morning fee (8:00 a.m. to Noon)	+\$400.00
Crematory Urns (no vault)	\$300.00 per grave
Saturday morning fee (8:00 a.m. to Noon)	+\$200.00
Crematory Urn (with vault)	\$400.00
Saturday morning fee (8:00 a.m. to Noon)	+\$200.00

Grave openings and/or closings that need to be completed AFTER 4:00pm on a weekday will incur an additional \$200.00 charge.

**C. Disinterment Fees (includes re-burial in same location)**

Urn	\$500.00 per grave
Baby Grave (Under 5 years of age)	\$500.00 per grave
Adult Grave	\$1,200.00 per grave

**D. Foundations**

*Note: Foundations are poured with footings to ensure stability and longevity. For double monument foundations an 8" separation between the monuments will be used unless otherwise specified*

Foundations, unless otherwise listed	\$.55 per square inch
Foundations for in-ground vases	\$80.00 per vase
Foundations for Veteran's bronze markers	\$250.00 each
<del>Cement urn pads for cement urns</del>	<del>\$50.00 per pad</del>
Foundation Extension for Legacy Vases	\$75.00 each