

CENTRAL COMMUNITY COLLEGE BOARD OF GOVERNORS MEETING
Thursday, June 18, 2026, 12:00 PM, Central Community College Administration Board
Room

Work Session begins at 11 a.m.

A G E N D A

Central Community College reserves the right to make changes to the agenda up to 48 hours prior to the scheduled meeting. A current copy of the agenda may be obtained in the College President's Office, 3134 W. Highway 34, Grand Island, Nebraska.

1. Agenda
Information Item
2. Data Connectivity
Action Item
3. Feasibility Study
Action Item
4. Budget Overview
Action Item
5. Break before 1 p.m. meeting
Action Item

**Board Work Session Agenda
June 18, 2026, Grand Island**

Lunch will be provided.

Noon – Data Connectivity – Peters and Barto

12:15 p.m. – Feasibility Study – Skalberg

12:30 p.m. – Budget Overview – Gotschall and Golka

12:50 p.m. – Break before 1 p.m. meeting

Mission in Motion

2026 Feasibility Study Findings and Foundation Board Action



Columbus Raider Fieldhouse & Grand Island Residence Hall



Columbus Raider Fieldhouse & Grand Island Residence Hall

- ❑ April/May 2026 Feasibility Studies
- ❑ Conducted by Tom Paulson Consulting
- ❑ 79 confidential stakeholder interviews completed
- ❑ To evaluate:
 - ✓ Community support
 - ✓ Fundraising potential
 - ✓ Project priorities

Confidence in CCC

Columbus Study

- ✓ 95% Positive impression of CCC
- ✓ 95% Familiar with CCC
- ✓ 90% Believe CCC degrees are important to meeting workforce needs

Grand Island Study

- ✓ 95% Positive impression of CCC
- ✓ 90% Familiar with CCC
- ✓ 90% Believe CCC degrees are important to meeting workforce needs

What They Said...Strengths of CCC

- ✓ **Responsive** to employer and workforce needs
- ✓ **Affordable**, high-quality education
- ✓ Strong **transfer** and **career pathways**
- ✓ Excellent **faculty** and **staff**
- ✓ A significant contributor to regional **economic development**

“Industry and business are very committed to CCC. This is necessary and attainable.”

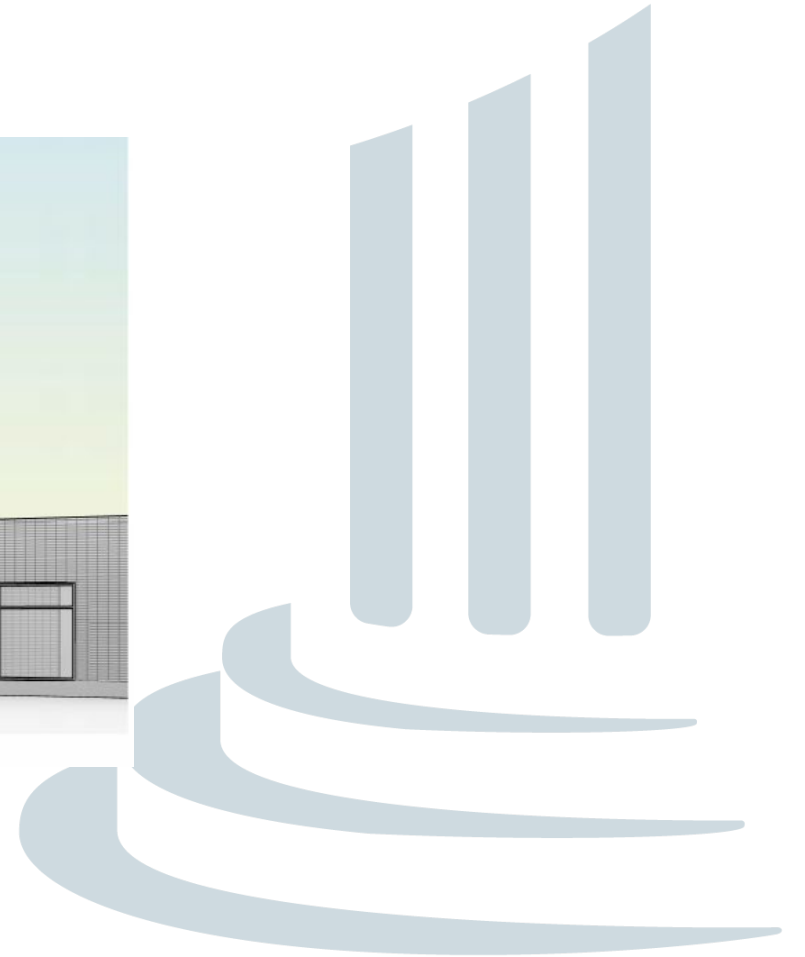
“It takes its middle name (Community) very seriously!”

What They Said...Needs Improvement

- Increase **community awareness** & marketing
- Strengthen community **connections**
- Continue **facility improvements**
- Expand **workforce & apprenticeship** opportunities
- Invest in student experience & **campus life**



Raider Fieldhouse Findings



Raider Fieldhouse Findings



84% had a positive impression of the project



Strong support for improving student-athlete facilities



Project seen as investment in recruitment, retention, and campus pride.



Concerns focused primarily on competing fundraising efforts, not the project itself.



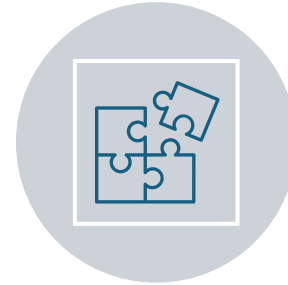


Grand Island Residence Hall Findings

Grand Island Residence Hall Findings



95% had a positive impression of the project



Viewed as one of the most important missing elements of the Grand Island Campus.



Strong belief that housing will improve recruitment/increase retention



Strong belief that housing will enhance campus culture; support workforce development

"Accessibility for students to live on campus and integrate into the community. It will attract students looking for the full college experience."

Fundraising Capacity Assessment

The consultant concluded that both projects demonstrated:

Strong community interest

Significant donor potential

Positive perceptions of CCC leadership

Confidence in the Foundation's ability to conduct a successful campaign

Fundraising Capacity Assessment

The CCC Foundation Board is well positioned to carry out a campaign:

- ✓ 87% Raider Fieldhouse Project
- ✓ 92% Grand Island Residence Hall Project

“This isn’t going to be easy, but there is a high level of support for the college.”

“Overall, I’m a big believer in Central...personally and for business reasons. \$3 million is attainable.”

Foundation Board Action

After reviewing:

- ✓ Feasibility study findings
- ✓ Fundraising capacity
- ✓ Institutional priorities and Foundation Strategic Plan
- ✓ Project timelines

The Foundation Board approved moving forward with major gifts campaign planning for both projects.

These projects align strongly with the College's strategic priorities, address significant student and community needs, and present meaningful opportunities for philanthropic investment.



Columbus Raider Fieldhouse Campaign

Total Construction Cost: \$7.3 million

Campaign Goal: \$3.5 million

Campaign Timeline: Launch fall of 2026 - 2027

Campaign Priorities:

Facility construction

Equipment and furnishings

Endowment supporting student athlete success initiatives



Grand Island Residence Hall Campaign

Total Construction Cost: \$21 million

Campaign Goal: \$3 million

Campaign Timeline: Launch fall of 2026 - 2027

Campaign Priorities:

Residence Hall Construction

Student Housing Subsidy Endowment

CCC Foundation Next Steps

The Foundation Board Authorized:

- ❑ Major Gifts Campaigns for Raider Fieldhouse Project and Grand Island Residence Hall Project
- ❑ Staff to begin campaign planning and gift cultivation
- ❑ Directed Staff to develop a comprehensive campaign plan, including:
 - ❑ Leadership Structure
 - ❑ Gift Charts
 - ❑ Naming Opportunities
 - ❑ Budget

“The rewards will outweigh the challenges.”



Feasibility Studies Key Takeaways...



Strong support for
Central Community
College



Strong support for
both projects



Foundation Board
approved moving
forward with major
gifts campaigns



Questions?

2026 Feasibility Study Findings and Foundation Board Action



We are proud to maximize student and
community success *with you!*

Thank you



**General Fund Budget
FYE 2027**

Objects of Expense	2026 Budget	% Total	2027 Budget Est	% Change	\$ Change	%Total
51 - PERSONNEL	\$ 55,562,531	74.46%	\$ 57,268,915	3.071%	\$ 1,706,384	74.41%
52 - OPERATING	15,791,571	21.16%	16,351,961	3.55%	560,390	21.25%
53 - SUPPLIES	1,623,764	2.18%	1,583,848	-2.46%	(39,916)	2.06%
54 - TRAVEL	828,494	1.11%	917,711	10.77%	89,217	1.19%
55 - EQUIPMENT	812,549	1.09%	843,725	3.84%	31,176	1.10%
Grand Total	\$ 74,618,909		76,966,160	3.15%	\$ 2,347,251	

Revenue	2026 Budget	% Total	2027 Budget Est	% Change	\$ Change	%Total
Community College Future Fund	\$ 50,866,769	68.17%	\$ 52,647,106	3.50%	\$ 1,780,337	68.40%
State Aid	12,692,123	17.01%	11,929,054	-6.01%	(763,069)	15.50%
Tuition	10,660,017	14.29%	10,990,000	3.10%	329,983	14.28%
Other	400,000	0.54%	400,000	0.00%	-	0.52%
Cash Reserves	-	0.00%	1,000,000	0.00%	1,000,000	1.30%
Grand Total	\$ 74,618,909		\$ 76,966,160	3.15%	\$ 2,347,251	
			Diff Expense & Revenue		\$ (0)	

PRELIMINARY
 DRAWING
 NOT FOR
 CONSTRUCTION

CONSULTANT
 LOGO AND
 CONTACT
 INFORMATION

CENTRAL COMMUNITY COLLEGE - GRAND ISLAND
 STUDENT HOUSING
 3134 West Highway 34
 Grand Island, Nebraska 68801

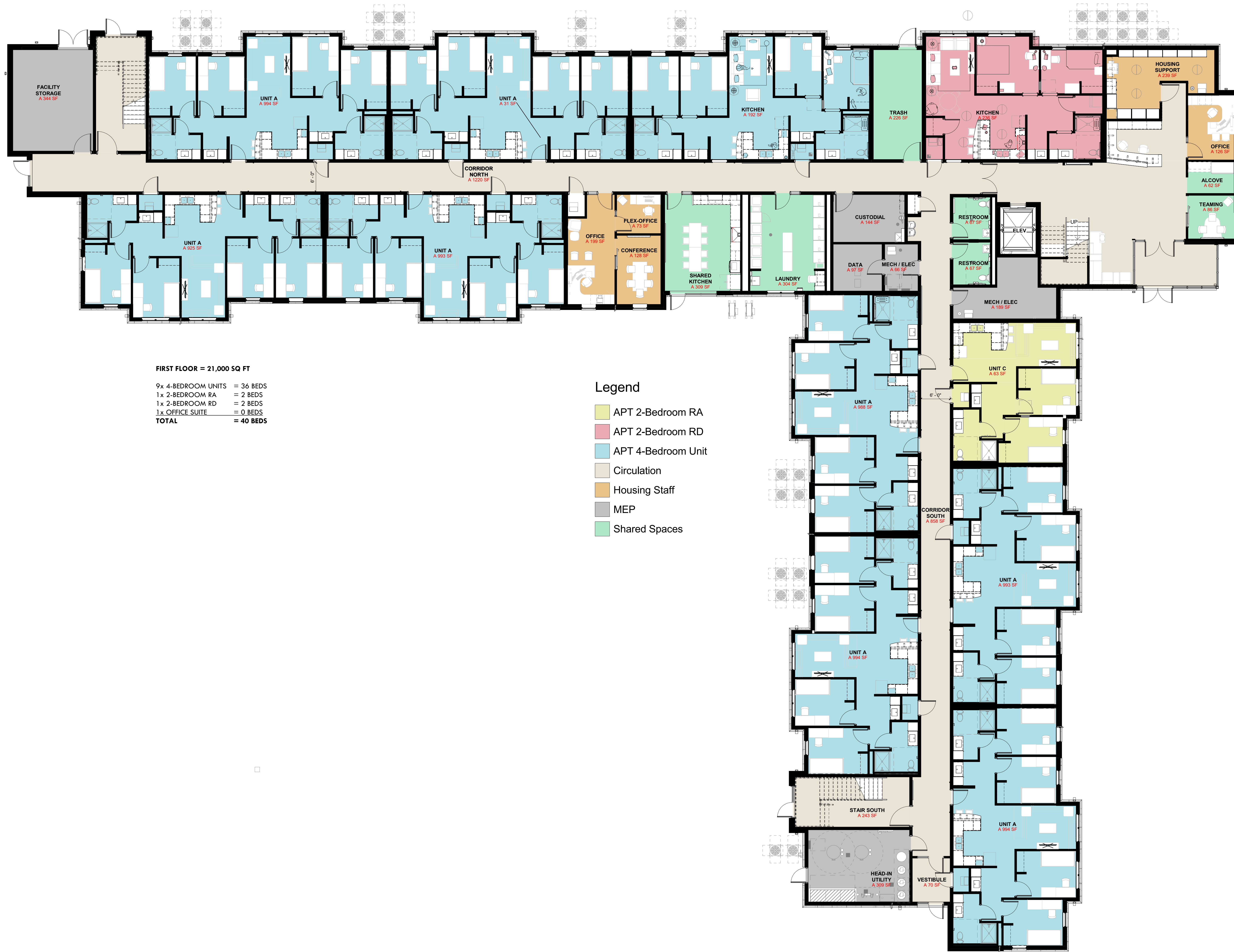
Revision/Issue	Date

OVERALL FLOOR PLAN -
 FIRST FLOOR

Project Number: 2568
 Date: May 15, 2026
 Copyright © 2026
 WILKINS Architecture | Design | Planning L.L.C.

Sheet Number:

PS1-1



FIRST FLOOR = 21,000 SQ FT

- 9x 4-BEDROOM UNITS = 36 BEDS
- 1x 2-BEDROOM RA = 2 BEDS
- 1x 2-BEDROOM RD = 2 BEDS
- 1x OFFICE SUITE = 0 BEDS
- TOTAL = 40 BEDS**

Legend

- APT 2-Bedroom RA
- APT 2-Bedroom RD
- APT 4-Bedroom Unit
- Circulation
- Housing Staff
- MEP
- Shared Spaces

PRELIMINARY

 DRAWING

 NOT FOR

 CONSTRUCTION

CONSULTANT

 LOGO AND

 CONTACT

 INFORMATION

CENTRAL COMMUNITY COLLEGE - GRAND ISLAND

 STUDENT HOUSING

 3134 West Highway 34

 Grand Island, Nebraska 68801

Revision/Issue	Date

OVERALL FLOOR PLAN - SECOND FLOOR

Project Number: 2568

 Date: May 15, 2026

Copyright © 2026

 WILKINS Architecture | Design | Planning L.L.C.



SECOND FLOOR = 21,000 SQ. FT

 9x 4-BEDROOM UNITS = 36 BEDS

 1x 2-BEDROOM RA = 2 BEDS

 1x 2-BEDROOM UNIT = 2 BEDS

 1x 1-BEDROOM UNIT = 1 BED

TOTAL = 41 BEDS

- Legend**
- APT 1-Bedroom
 - APT 2-Bedroom
 - APT 2-Bedroom RA
 - APT 4-Bedroom Unit
 - Circulation
 - MEP
 - Shared Spaces



STUDENT
HOUSING

