

## Education Committee - Regular School Board Meeting

Duluth Public Schools, ISD 709

Agenda

Tuesday, September 24, 2013

District Services Center

709 Portia Johnson Dr.

Duluth, MN 55811

4:30 PM

### 1. Informational Items

#### A. Informational Presentations

##### 1) 2013 ACT Assessment Results

4

Tawnyea Lake, Director of Assessment, Evaluation, and Performance, shared the local results of the 2013 ACT Assessment, which is a national college entrance exam and accepted by all United States colleges and universities.

Recommendation: It is recommended that the Duluth School Board receive this item as informational.

##### 2) 2013 Assessment Results

15

Tawnyea Lake, Director of Assessment, Evaluation, and Performance, shared Duluth Public Schools 2013 Assessment Results, which were released statewide on August 1, 2013 by the Minnesota Department of Education and include MCA, MCA-Modified, MTAS, and GRAD results in Reading and Math.

Recommendation: It is recommended that the Duluth School Board receive this item as informational.

##### 3) Laura MacArthur School Improvement Update

34

Nathan Glockle, Principal of Laura MacArthur Elementary, provided an update on MacArthur's Priority School status and the School Improvement Grant (SIG) for 2013-14.

Recommendation: It is recommended that the Duluth School Board receive this item as informational.

##### 4) Head Start State and Federal Grant Update

36

Pam Rees, Director of Head Start, presented an update on the Federal Head Start Grant with the Sequestration Plan along with the State Head Start Grant, which were both approved last spring.

Recommendation: It is recommended that the Duluth School Board receive this item as informational.

**B. Grant Applications** 38

1) Minnesota Department of Education Early Learning Scholarships Pathway II Grant Application

Pam Rees, Director of Head Start, has applied for an Early Learning Scholarships Pathway II Grant from the Minnesota Department of Education in the amount of \$130,000. If awarded funds will be used to support the coordination of transition to kindergarten and the early grades within our District.

Recommendation: It is recommended that the Duluth School Board receive this item as informational.

2) 2013-14 ESEA Consolidated Application

The 2013-14 ESEA Consolidated Application for the Duluth Public Schools was submitted by Charlie Leibfried, Duluth Public Schools LEA, to the Minnesota Department of Education requesting allocations for Title I, Part A - Improving Basic Programs, Title I Part D - Neglected and Delinquent, and Title II Part A - Teacher and Principal Training and Recruiting. The amounts requested are as follows:

Title I, Part A - \$2,850,750.40

Title I, Part D - \$274,825.14

Title II, Part A- \$620,898.27

Recommendation: It is recommended that the Duluth School Board receive this item as informational.

**2. Action Items**

A. Presentation Items Requiring Approval - None

B. Resolution E-09-13-3133 - Acceptance of Grant Awards to Duluth Public Schools 41

Attached is Resolution E-09-13-3133 - Acceptance of Grant Awards to Duluth Public Schools, to accept and approve grant awards from the following organizations:

Essentia Health

Ordean Foundation

Minnesota Department of Education

Minnesota Department of Education

Southern St. Louis County

Northland Foundation

Recommendation: It is recommended that the Duluth School Board accept and approve Resolution E-09-13-3133 - Acceptance of Grant Awards to Duluth Public Schools.

C. Extended Trip Requests

47

The following Extended Trip Requests are submitted for review and approval:

Duluth Public Schools eleventh and twelfth grade HOSA students will be attending the Minnesota HOSA Medical Reserve Corps (MRC) Camp from October 10-12, 2013, where they will participate in three days of intense training for becoming potential MRC student volunteers in partnership with the Minnesota National Guard. The total cost of the trip is \$1,950 and will be funded through student fees and grant dollars.

Recommendation: It is recommended that the Duluth School Board accept and approve the above extended field trip request.

D. Diploma Requests

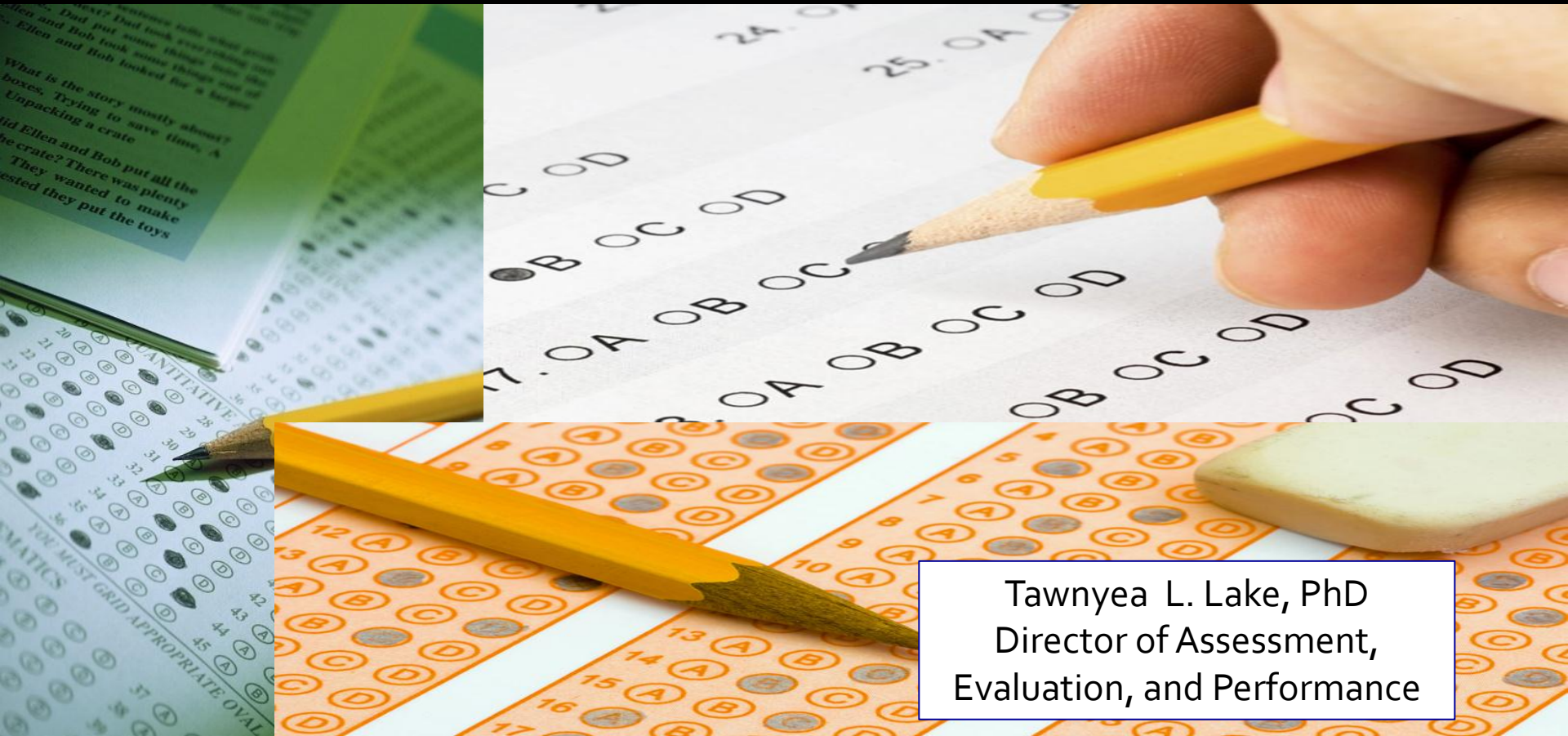
53

The following students have completed all high school graduation requirements and should be awarded a diploma:

Bryanna K. Schwarzkopf - July 26, 2013  
 Savanna K. Jordan-Seavey - July 26, 2013  
 Thea Arletta Mae Pelfrey - May 8, 2013  
 Adam Nicholas Beeman - June 19, 2013  
 Seth Michael Shykes - July 25, 2013  
 Joseph Jordon Bowens - September 5, 2013

Recommendation: It is recommended that the Duluth School Board accept and approve the above requested diploma awards.

# Duluth Public Schools ACT Summary Report Graduating Class of 2013



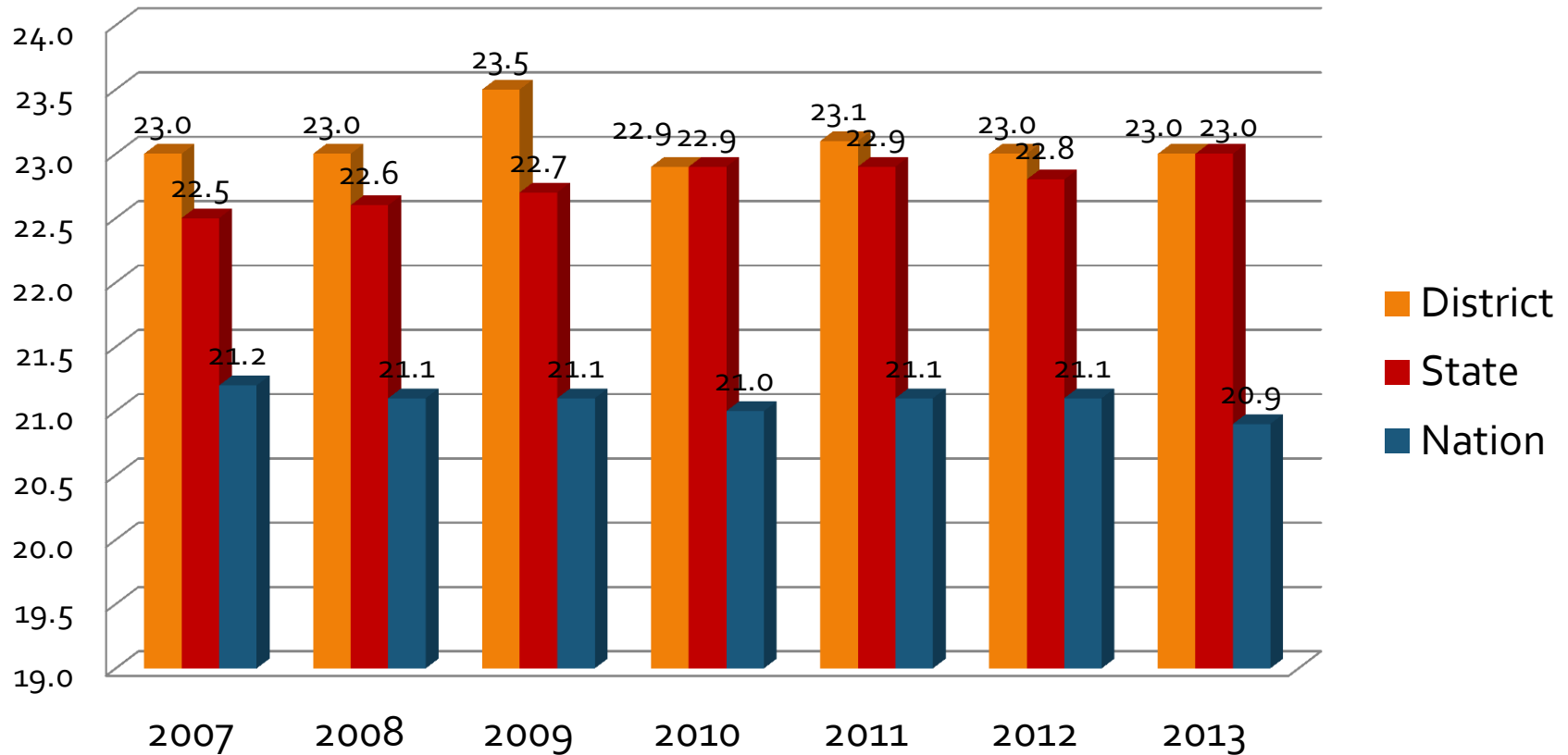
Tawnyea L. Lake, PhD  
Director of Assessment,  
Evaluation, and Performance

# ACT Basics

- Curriculum-based measure that provides a readiness indicator for college-level work
- Tests achievement in 4 areas:
  - English                      College English
  - Math                            College Algebra
  - Reading                        College Social Science
  - Science                         College Biology

# ACT Results

## Composite Scores Over Time

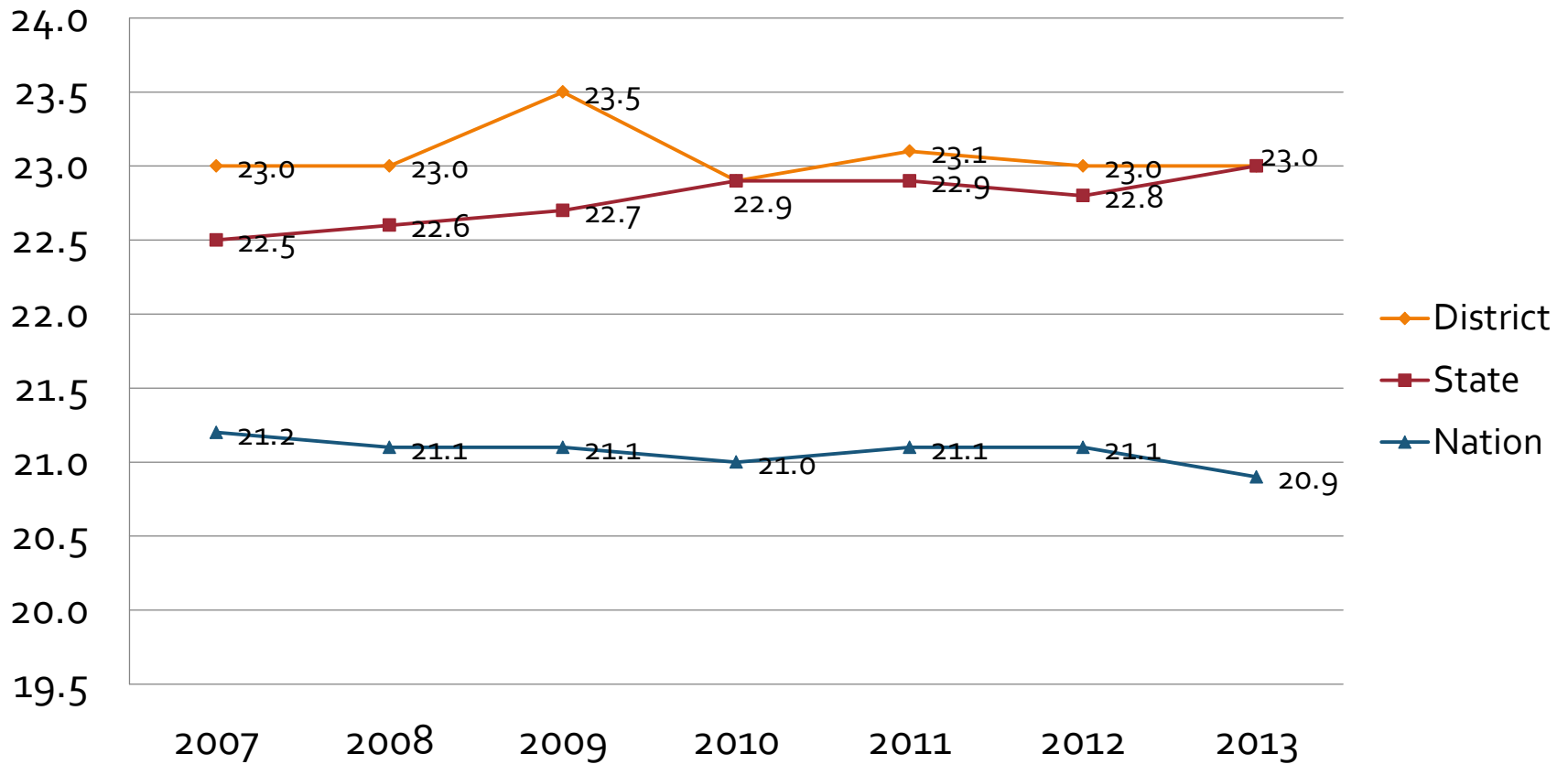


# ACT Results

- Reminder: Each year, test data for a school, district, and the state represents a different cohort of students. ACT encourages educators to focus on trends (3, 5, 10 years) rather than year-to-year changes. Such changes can represent normal - - even expected - - fluctuations. Focus on trends.
- Note: Scores for students taking the test with accommodations are included in the reports for the first time this year.

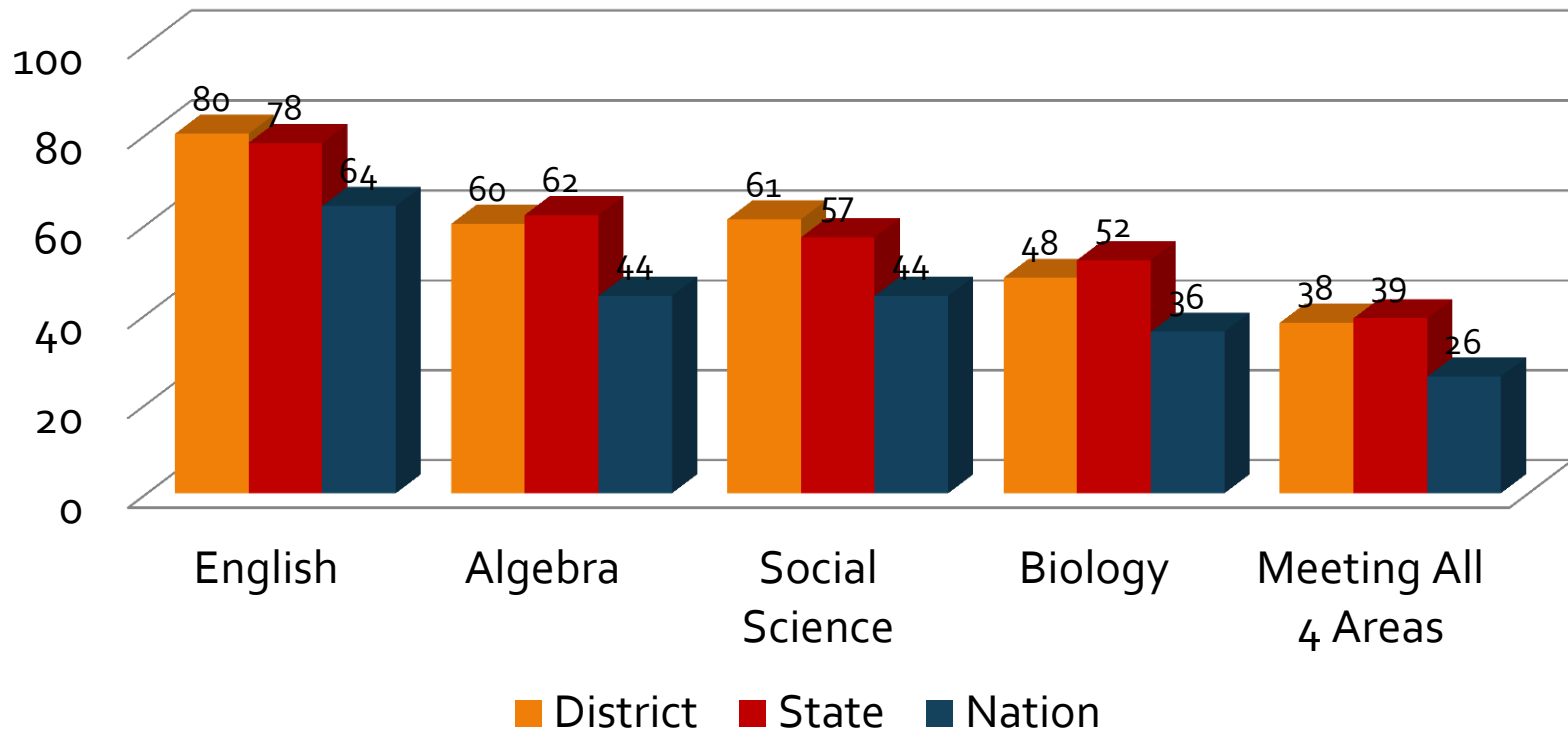
# ACT Results

## Composite Scores Over Time - Trends



# ACT Results

## Percent of Students Ready for College-Level Coursework



# ACT Themes

- Duluth students were well-above the nation in percent of students meeting college readiness benchmarks in:
  - English Composition\*
  - College Algebra
  - Social Science\*
  - Biology
  - All four areas
- \* Denotes areas above the state

# ACT Themes

- Although more students took the ACT in 2013, students of color are under-represented in our results
- Fewer students of color take the ACT, than would be expected, based on our demographics

	Percent of Student Population	Percent of Students Who Took ACT
Black/African American	8.3%	1% 6 students
American Indian/ Alaskan Native	6%	1% 3 students
White	81.1%	84% 393 students
Hispanic/Latino	2%	2% 11 students
Asian	2.5%	2% 8 students
Two or more races	Unknown	4% 21 students
Prefer not to respond/ No response	NA	6% 27 students

# ACT Themes

- Students who take more advanced courses “Core or More” earn substantially higher ACT composite scores
  - Core or More = 4 or more years of English and 3 or more years each of math, social studies, natural science
  - 82% of our 2013 graduating class took “Core or More”
  - Average ACT score for “Core or More” for Duluth students = 23.6 vs. 20.1
  - Of the Duluth students who reported taking fewer than 3 math courses, 0% were considered college ready

# ACT Themes

- To increase college readiness, ACT recommends the following:
  - Increase access for students to take the ACT
  - Make “core or more” a curriculum focus
  - Make sure the students are taking the right kind of courses early
  - Evaluate the rigor of courses
  - Plan guidance activities based on students’ career and college aspirations

# Questions?

Tawnyea L. Lake, PhD  
Director of Assessment, Evaluation,  
and Performance

[tawnyea.bolme-lake@duluth.k12.mn.us](mailto:tawnyea.bolme-lake@duluth.k12.mn.us)

(218) 336-8700 ext. 1027

2012-2013  
State Testing  
Results

Education Committee  
September 2013

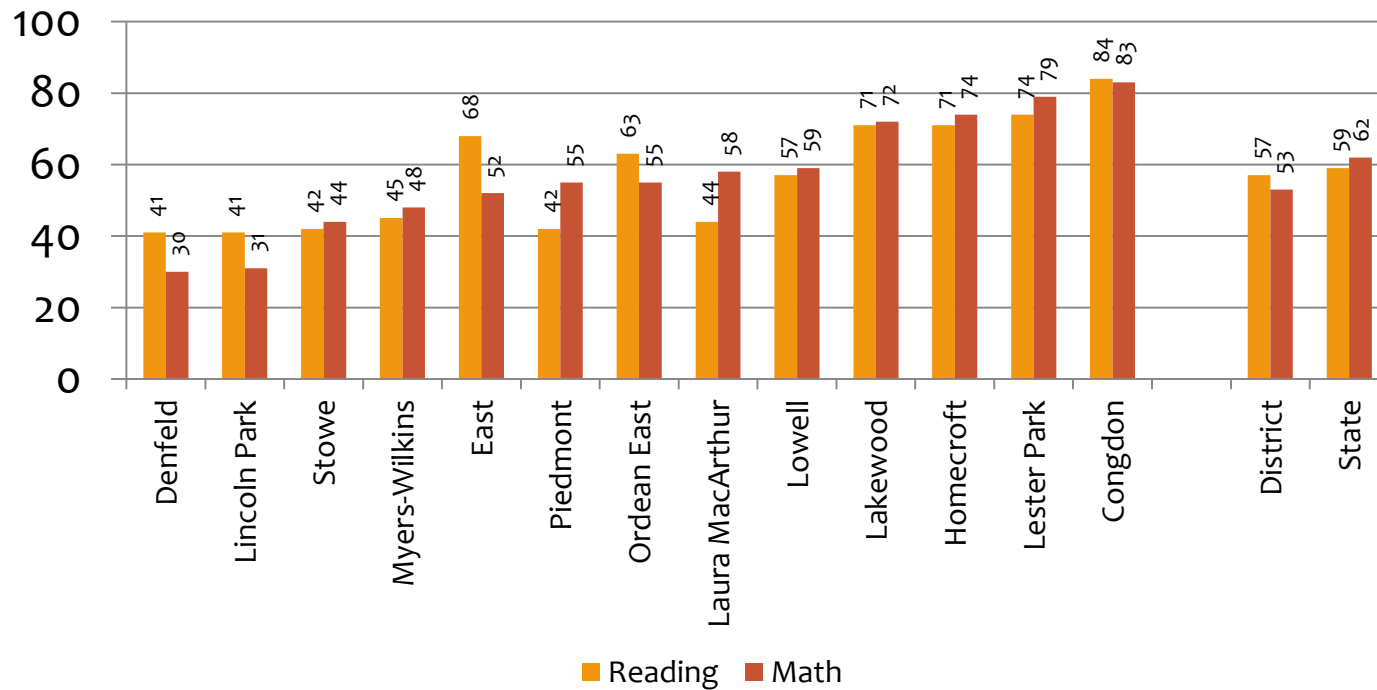
# All Accountability Test Results

# All Accountability Tests

- Combined proficiency score that includes all state accountability tests in reading and math, Oct. 1
- Proficiency indices used to calculate AYP/MMR
  - MCA
  - MCA-Modified
  - MTAS

# All Accountability Tests

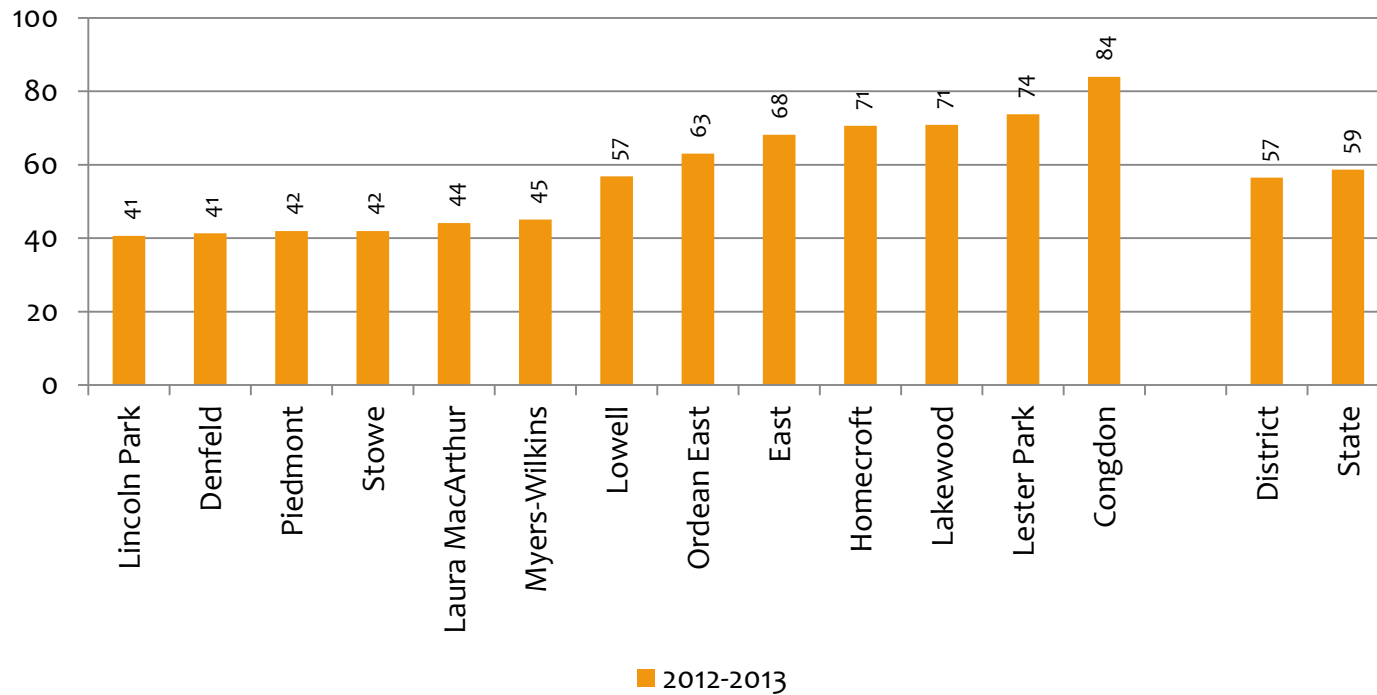
## All Students, All Grades



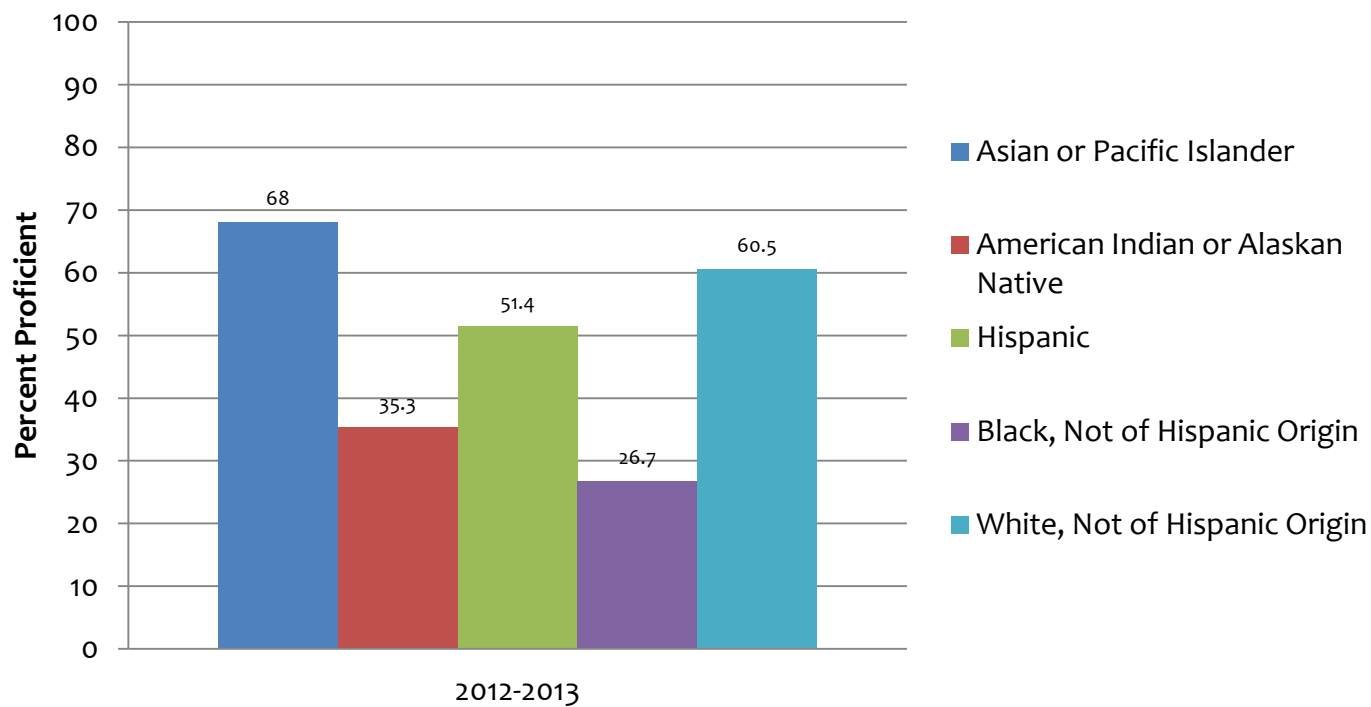
# All Accountability Test Results

Reading

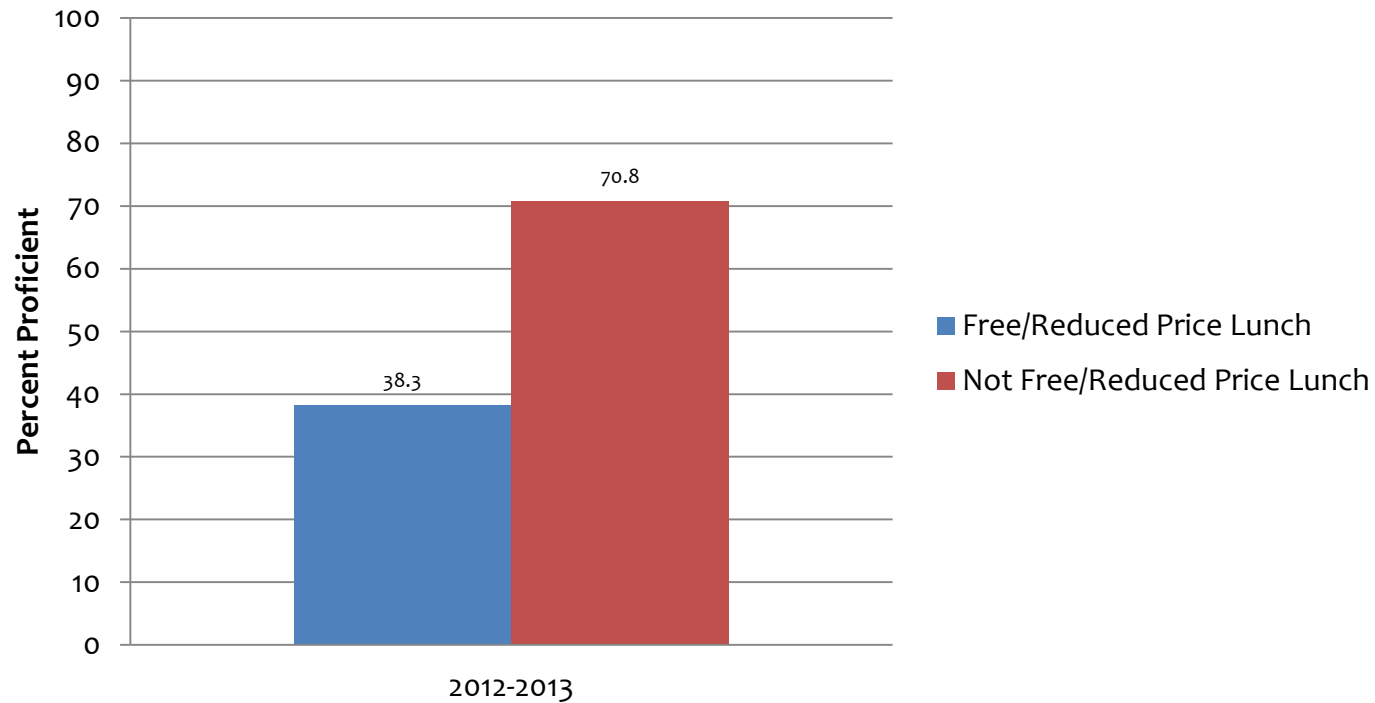
# All Accountability Tests (Reading) Scores By School



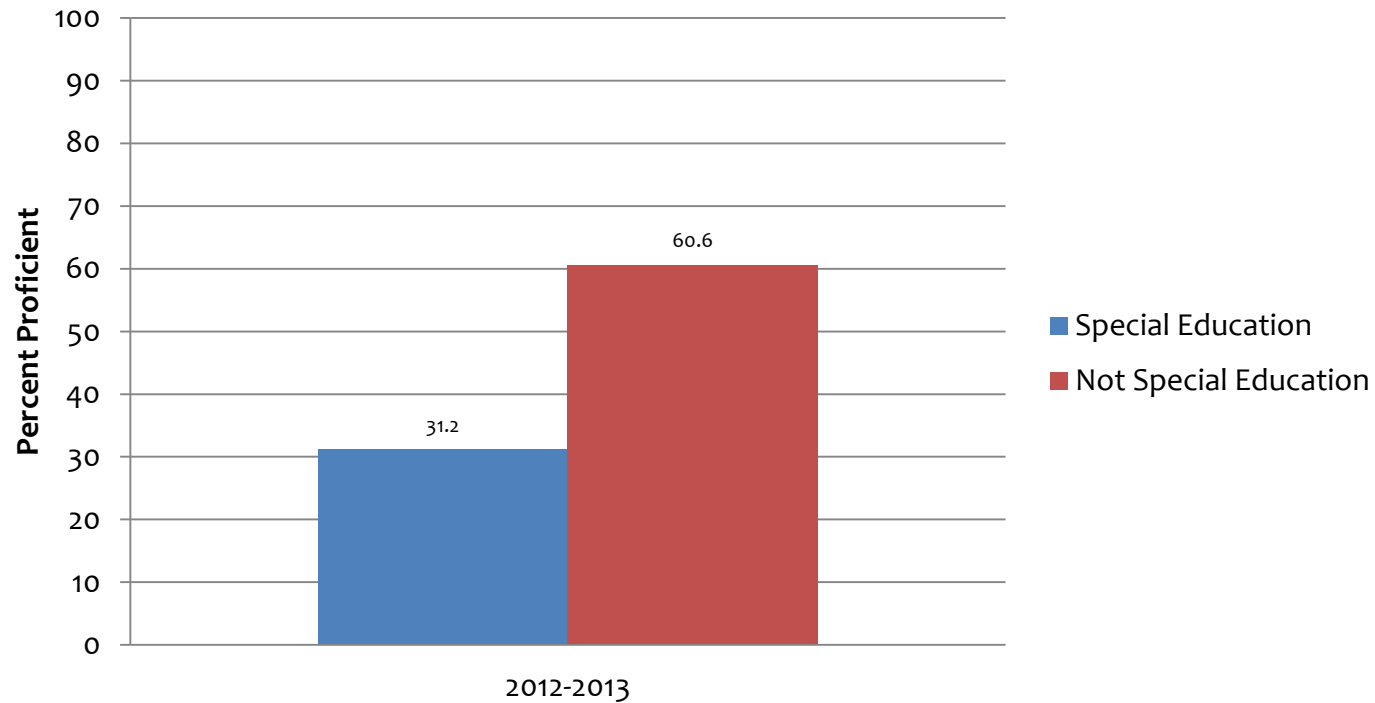
# All Accountability Tests (Reading) By Ethnicity



# All Accountability Tests (Reading) By Meal Status



# All Accountability Tests (Reading) By Special Ed Status



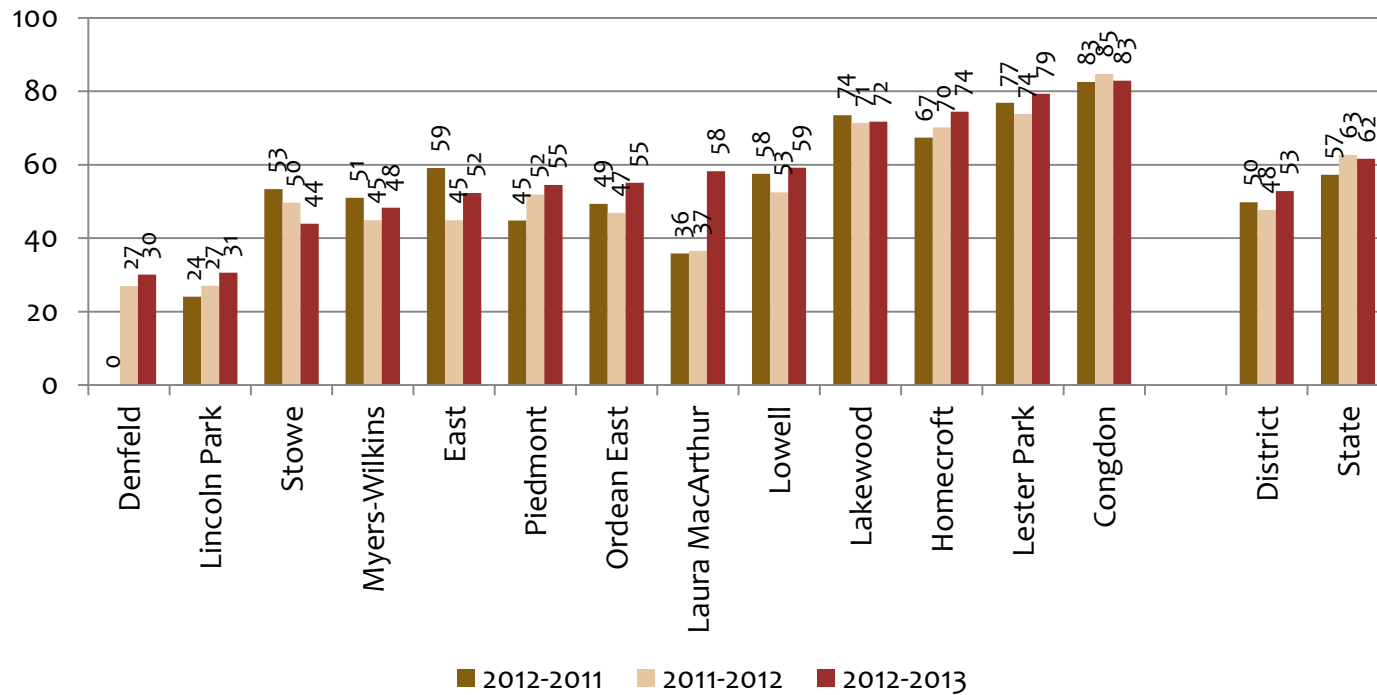
# All Accountability Tests (Reading) By Grade

	2012-2013
Grade 3	54.5
Grade 4	59.8
Grade 5	64.1
Grade 6	56.0
Grade 7	47.9
Grade 8	56.0
Grade 11	56.8

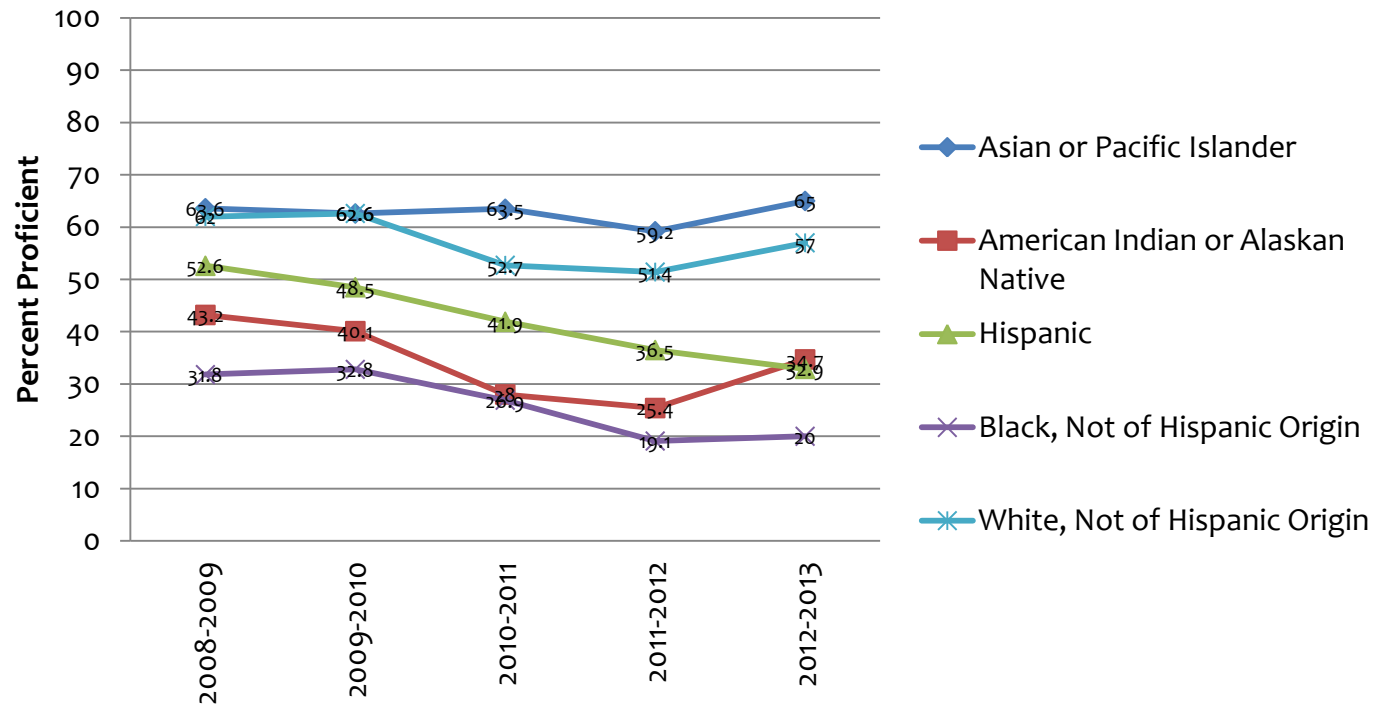
# All Accountability Test Results

Math

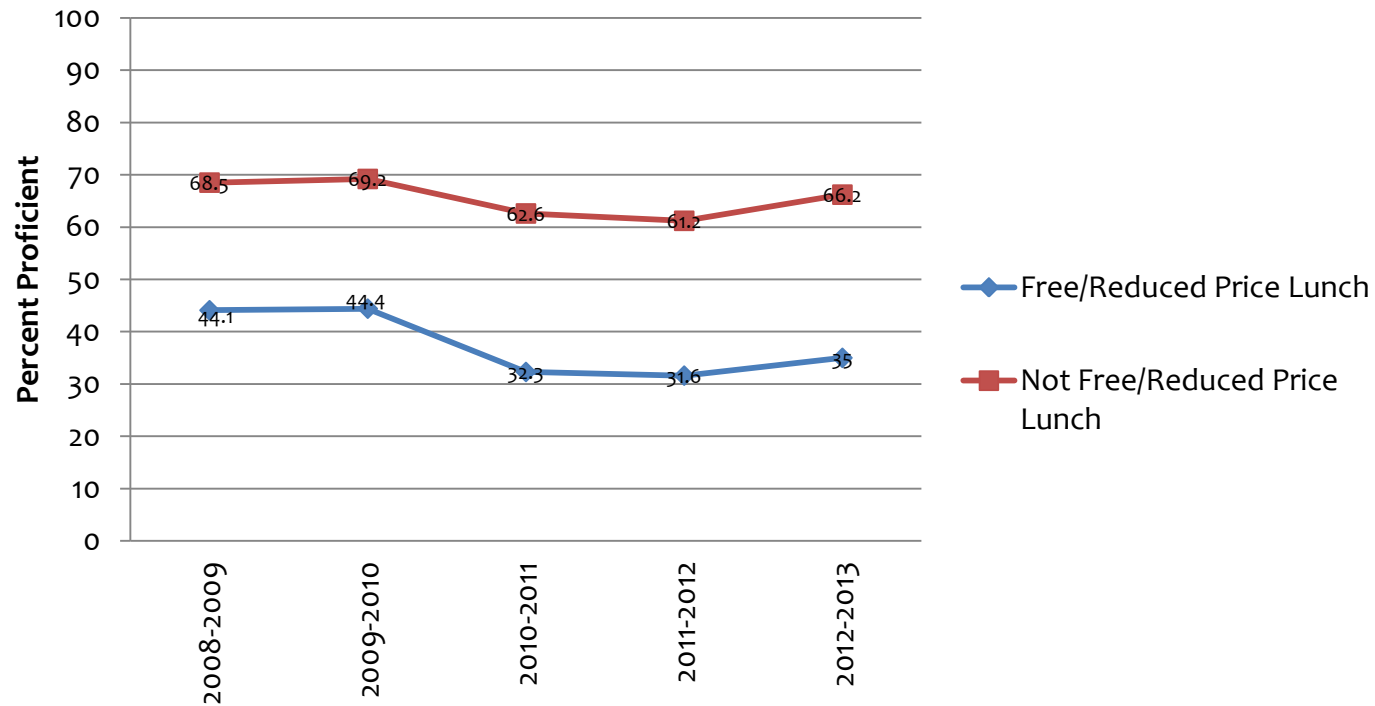
# All Accountability Tests (Math) Scores By School



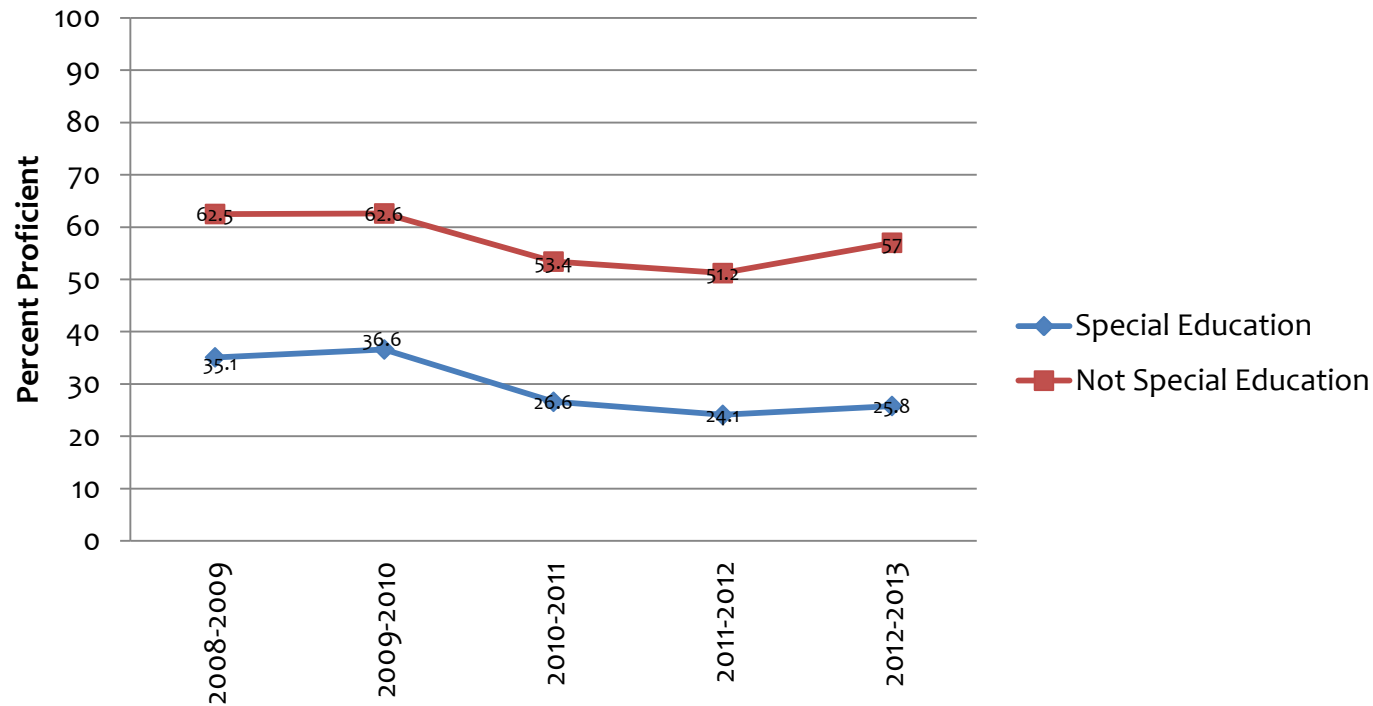
# All Accountability Tests (Math) By Ethnicity Over Time



# All Accountability Tests (Math) By Meal Status Over Time



# All Accountability Tests (Math) By Special Ed Status Over Time



# All Accountability Tests (Math) By Grade Over Time

	2010-2011	2011-2012	2012-2013
Grade 3	69.9	68.2	67.2
Grade 4	64.3	63.1	68.4
Grade 5	51.0	50.0	56.2
Grade 6	31.5	36.9	45.3
Grade 7	37.4	37.6	38.8
Grade 8	46.1	41.2	49.6
Grade 11	44.7	36.0	42.4

# Multiple Measurement Rating (MMR) Results

# Multiple Measurement Rating

- Result of approved NCLB waiver for all Minnesota school districts - Replaces AYP
  
- Consists of 4 domains:
  - Proficiency
  - Achievement Gap Reduction
  - Growth
  - Graduation
  
- Public Release Scheduled October 1st

# Questions?

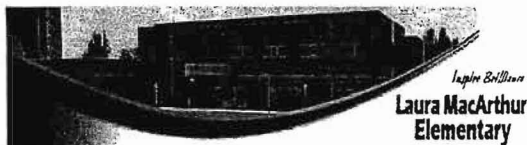
Tawnyea Lake, PhD

Director of Assessment and Evaluation

218.336.8700 ext. 1039

[tawnyea.bolme-lake@duluth.k12.mn.us](mailto:tawnyea.bolme-lake@duluth.k12.mn.us)

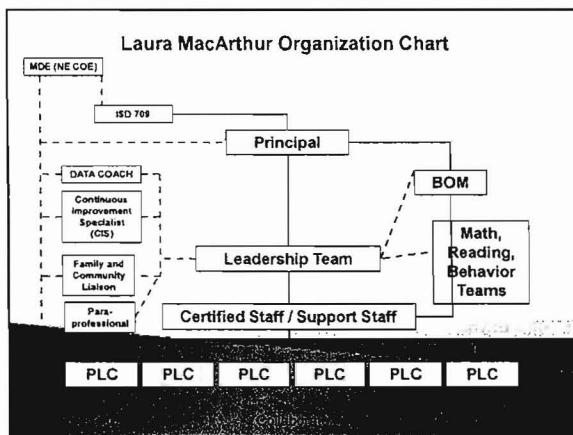
### School overview



We will be a reward school in 2015 and say we did it together!

### Intentionality

- Expectations, expectations, expectations
- Teaming and collaboration
- Developing people (Take fear out of the system)
- Laser focus on results
- Professional development
- Listening (people side of change)
- Can do spirit and empowering students, families and staff
- We will not settle for the status quo.



### Approaches to closing the achievement gap.

- Increased learning time
- High expectations for all
- Quickly meeting student need to resource
- Alignment of the adults in the building in language and behaviors (standards and norms)
- There are 7 days in a week, and SOMEDAY isn't one of them.

### Challenges

- Time
- Turning around a school is difficult work
- Scheduling to be within contract language
- Communicating information to all staff to ensure fidelity of implementation
- Keeping employee engagement high while managing so much change

Our staff has taken on this "Priority" label as a blessing. With support from MDE, ISD 709, NSOE, and our community, nothing will stop us from reaching our goals and vision of being a reward school in 2 years and saying we did it together.

George F. MacArthur Elementary School  
 Data Highlights of School Turnaround Efforts

Parent and Family Involvement

Event	SY 11-12	SY 12-13	SY 13-14	Change (+/-)
<b>Parent-Teacher Conferences</b>				
Goal setting conferences in September	NA	96%		
Spring conferences in January	NA	89%		
<b>Monthly Family Nights (# of people)</b>	NA			
September Open House	NA	NA	400	
Fall (Oct. – Nov.) Based on Peacemaker Assemblies	NA	46		
Winter (Dec.-Jan.) Based on Peacemaker Assemblies	NA	47		
Spring (Feb.-March) Based on Peacemaker Assemblies	NA	51		
Spring (April-May Based on Peacemaker Assemblies	NA	75		
<b>Cultural Night (Feb.26, 2013)</b>	NA	250		
MCA Pump up the Volume, grades 3-5 (March 28 <sup>th</sup> , 2013)	NA	100		
Student Enrollment on <i>October 1<sup>st</sup></i> (K to 5)	462	473		

Student Achievement

Measure of Achievement	SY 11-12	SY 12-13	SY 13-14	Change (+/-)
<b>MCA testing (percent proficient)</b>				
<b>Reading</b>				
Grade 3	n/a	49.32*		
Grade 4	n/a	40.54*		
Grade 5	n/a	41.0		
*Different baseline due to new MCA reading test				
<b>Math</b>				
Grade 3	47.0	62.5		+15.5
Grade 4	45.1	67.8		+22.7
Grade 5	15.7	42.3		+26.6

Closing the Achievement Gap

Different Subgroups	SY 11-12	SY 12-13	SY 13-14	Change (+/-)
Special Education Grade 4- math	28.6%	69.23%		+40.63
American Indian –Grade 4- math	30%	50%		+20
African American- Grade 4- math	20%	50%		+30
*Based on fall student enrollment (K to 5 <sup>th</sup> )	466	487	453- as of 9/17/2013	



**Department of Health and Human Services  
Administration for Children and Families  
Notice of Award (NOA)**

SAI NUMBER:

PMS DOCUMENT NUMBER:  
05CH533534

37

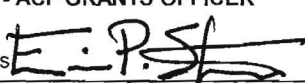
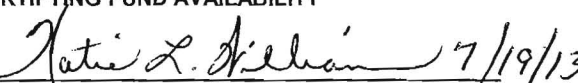
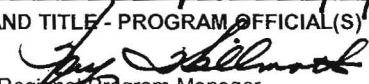
<b>1. AWARDING OFFICE:</b> OA/OGM/Region V		<b>2. ASSISTANCE TYPE:</b> Discretionary Grant	<b>3. AWARD NO.:</b> 05CH5335/34	<b>4. AMEND. NO.:</b>	
<b>5. TYPE OF AWARD:</b> SERVICE		<b>6. TYPE OF ACTION:</b> Non-competing Continuation		<b>7. AWARD AUTHORITY:</b> 42 USC 9801 ET SEQ.	
<b>8. BUDGET PERIOD:</b> 08/01/2013 THRU 07/31/2014		<b>9. PROJECT PERIOD:</b> INDEFINITE		<b>10. CAT NO./CFDA:</b> 93.600 ...	
<b>11. RECIPIENT ORGANIZATION:</b> DULUTH PUBLIC SCHOOL DISTRICT #709 Barnes Early Childhood Center 2102 Blackman Ave Duluth MN 55811 2058 Thomas Kasper, Board Chair			<b>12. PROJECT / PROGRAM TITLE:</b> HEAD START: FULL YEAR PART DAY HANDICAPPED TRAINING AND TECHNICAL ASSISTANCE		
<b>13. COUNTY:</b> ST LOUIS		<b>14. CONGR. DIST.:</b> 08	<b>15. PRINCIPAL INVESTIGATOR OR PROGRAM DIRECTOR:</b> Bill Gronseth , Superintendent of Schools		

<b>16. APPROVED BUDGET:</b>		<b>17. AWARD COMPUTATION:</b>		
Personnel.....	\$ 1,085,432	A. NON-FEDERAL SHARE.....	\$ 452,628	20.00 %
Fringe Benefits.....	\$ 490,736	B. FEDERAL SHARE.....	\$ 1,810,511	80.00 %
Travel.....	\$ 6,036	<b>18. FEDERAL SHARE COMPUTATION:</b>		
Equipment.....	\$ 0	A. TOTAL FEDERAL SHARE.....	\$ 1,810,511	
Supplies.....	\$ 18,294	B. UNOBLIGATED BALANCE FEDERAL SHARE.....	\$	
Contractual.....	\$ 36,619	C. FED. SHARE AWARDED THIS BUDGET PERIOD..	\$ 1,810,511	
Facilities/Construction.....	\$ 0	<b>19. AMOUNT AWARDED THIS ACTION:</b>		
Other.....	\$ 28,672	\$ 1,810,511		
Direct Costs.....	\$ 1,665,789	<b>20. FEDERAL \$ AWARDED THIS PROJECT PERIOD:</b>		
Indirect Costs.....	\$ 144,722	\$		
At % of \$		<b>21. AUTHORIZED TREATMENT OF PROGRAM INCOME:</b>		
In Kind Contributions.....	\$ 0	<b>22. APPLICANT EIN:</b>	<b>23. PAYEE EIN:</b>	<b>24. OBJECT CLASS:</b>
Total Approved Budget(**)..	\$ 1,810,511	1-416003776-A1	1-416003776-A1	41.51

<b>25. FINANCIAL INFORMATION:</b>					DUNS: 071501092	
<b>ORGN</b>	<b>DOCUMENT NO.</b>	<b>APPROPRIATION</b>	<b>CAN NO.</b>	<b>NEW AMT.</b>	<b>UNOBLIG.</b>	<b>NONFED %</b>
OGM	05CH533534	75-3-1536	2013 G054120	\$28,958		
OGM	05CH533534	75-3-1536	2013 G054122	\$1,781,553		

**26. REMARKS:** (Continued on separate sheets)

Client Population: 223.  
Number of Delegates: 0.  
Paid by DHHS Payment Management System (PMS), see attached for payment information.  
This award is subject to the requirements of the HHS Grants Policy Statement (HHS GPS) that are applicable to you based on your recipient type and the purpose of this award.  
This includes requirements in Parts I and II (available at <http://www.hhs.gov/asfr/ogapa/grantinformation/hhsgps107.pdf>) of the HHS GPS.  
Although consistent with the HHS GPS, any applicable statutory or regulatory requirements, including 45 CFR Part 74 or 92, directly apply to this award apart from any coverage in the HHS GPS.

<b>27. SIGNATURE - ACF GRANTS OFFICER</b>		<b>DATE:</b>	<b>28. SIGNATURE(S) CERTIFYING FUND AVAILABILITY</b>		
Eric P. Staples 		7/23/2013	Katie L. Williams 		
<b>29. SIGNATURE AND TITLE - PROGRAM OFFICIAL(S)</b>		<b>DATE:</b>			
Kay Willmoth, Regional Program Manager 		7/19/13			

**STATE OF MINNESOTA  
EARLY LEARNING SCHOLARSHIPS PATHWAY II APPLICATION  
Narrative Description of Program Expansion or Program Enhancement**

**School district or program name: Duluth Public Schools/ISD 709**

The application includes the narrative sections below for the program applicant to complete. Provide the information on separate pieces of paper.

**13. Statement of Need.** Describe the status of early childhood education services delivered in the community/school district attendance area. Description of early childhood education programs should include school-based preschool programs, Head Start and child care. Include in the description in which ways your program partners with other early childhood programs and services, including transition strategies for kindergarten entry. Unmet needs of children with high needs that you serve, including waiting lists, should be explained. Detail how your program will outreach to and serve children with the highest needs, and notify families of the availability of Early Learning Scholarships Pathway II through the early childhood program.

• (Points Possible: 10 Maximum Pages: 1)

**The Duluth Public Schools is well poised to utilize Early Learning Scholarships. Currently the Duluth Public Schools is home to Head Start, School Readiness, Early Childhood Family Education, Community Education and Early Childhood Special Education. These district Early Childhood Programs have developed strong collaborative relationships over the past few years. We share trainings, resources and are in the third year of a collaboration that teams regular Early Childhood Education teachers with Early Childhood Special Education teachers. In these collaborative classrooms, children receiving Special Education services attend an early childhood program with their typically developing peers. The children with Special Education plans are being challenged to greater degree than in the past and are making terrific gains alongside their age mates.**

**Duluth Head Start, School Readiness and Community Education Preschool are 4 Star rated Parent Aware Programs. All programs use a research based reading curriculum; Opening the World of Learning, (OWL) and utilize literacy strategies as well as Parent Aware approved assessments. Duluth Head Start and School Readiness also use the Second Step Social-Emotional curriculum in all of their classrooms.**

**The Duluth Public Schools recently received notification of acceptance of a \$75,000. Title I matching grant. This grant will provide a 3-day per week, 3 hours per day preschool experience for 3 year olds in one of our elementary schools with the highest percentage of children on waiting lists. Most of our early childhood programs are not specifically targeting 3 year olds although we do have data that shows Head Start children who enter their 2<sup>nd</sup> year of Head Start will start the year 20% higher than their age mates. We know this opportunity will support our district's plans for children to read well by grade 3.**

**The Duluth Public Schools has recently made many strides toward alignment from Pre K and grade 3. We have participated in the regional Early Childhood Summits the last few years that resulted in the formation of a work group. This group, led by the principal of Laura MacArthur Elementary School, a priority school, and with financial support from**

**the Northland Foundation is made up of early childhood and kindergarten teachers and administrators. The main goals are to increase our knowledge and understanding of each other's work with children and families, design a way to share child outcomes which will inform teachers about individual children's growth, strategies to meet their individual needs and better prepare all parties for the transition to kindergarten and beyond. Research suggests this is the type of intentionality it takes to prepare children for school success. We will build a template with the Laura MacArthur Elementary School team that can be used district wide in schools where early childhood programs are co-located with their elementary colleagues but true collaboration does not yet exist. This work will continue through the 2013-2014 school year with continued grant support from the Northland Foundation.**

**As detailed in the section regarding proposed use of funds, we plan to transform the way our school district transitions children and families to kindergarten. We have easy access to families who are currently enrolled and attending our district's early childhood programs, housed within district elementary school buildings, ensuring we will reach those who meet the income criteria for Early Learning Scholarships.**

**2. Proposed use of the funds for the Early Learning Scholarships Pathways II.** The goal of the Early Learning Scholarships is to increase access to high-quality early childhood programs for children primarily between the ages of three- to five-years in communities throughout the state. Impacting kindergarten readiness of children with high needs is a primary intended outcome for scholarship recipients.

**14. In this section, describe how your program intends to use the Early Learning Scholarships.** Programs may use the Early Learning Scholarship Pathway II funds for serving additional children with high needs and/or to enhance early childhood education services for participating children receiving scholarships in their early childhood program. If you are expanding services, describe the quality of the services you will provide. If Pathway II funds are used for enhancement of services, detail the use of scholarships for one or more of the enhancement activities.

- a) Expanding the length and/or duration of the program services.
- b) Increasing the intensity and length of instructional content or other curriculum improvements.
- c) Offering smaller class sizes and/or lower child-to-staff ratios to increase children's gains in learning.
- d) Offering comprehensive services that are responsive to children's needs to improve learning outcomes -- with a particular focus on opportunities for family engagement and parenting education.
- e) Incorporating compensatory instructional services to accelerate literacy and language development for participating children.
- f) Coordination of transition to kindergarten and the early grades with the local school district.

Include the expected number of children served, child to teacher/caregiver ratios, type of class offered (if applicable), staffing, etc. Describe strategies used to notify families of the award of a Pathway II scholarship to their child.

**IMPORTANT NOTE:** Early Learning Scholarship funds used for either expansion or enhancement must not supplant any federal funds used for programs or services. Scholarship funds cannot be used for services otherwise paid for with federal funds. For example, if a child

with special needs is receiving mental health services as part of their Individualized Education Program (IEP), the Early Learning Scholarships should not be used to provide this service.

• **(Points Possible: 50 Maximum Pages: 5)**

**The Duluth Public Schools propose to use Early Learning Scholarships to support the coordination of transition to kindergarten and the early grades within our school district as allowed under enhancement activities (F).**

**To that end, we will transform the way children and families move from Early Childhood settings to kindergarten at seven district elementary school buildings where we currently have 4 Star Rated Parent Aware programming in place.**

**Duluth's Kindergarten Connection will be held in the spring of the upcoming school year and will provide 4 evening sessions of 2 hours each week for 4 consecutive weeks for children and parents encompassing all aspects of their upcoming transition from Early Childhood to Kindergarten with the last session incorporated into district wide building Kindergarten Roundups which is open to all district families with a child entering Kindergarten. Out of a possible 235 - 4 year old children and their families, we plan to serve 188 or approximately 80% at these evening sessions.**

**We know from the work we have started with kindergarten teachers and administration that we must do whatever it takes to help children and parents move from Early Childhood programs to Kindergarten with ease and confidence. As we develop and strengthen the transition to Kindergarten, we are keenly aware of the concerns parents have as their children enter Kindergarten. Parents' own negative school experiences may influence the way they feel about the school setting. Our plan will address these concerns and help parents further develop the advocacy skills they learned in pre-k settings. Our plan will require our staffs to ensure that our school buildings are welcoming, inclusive and culturally sensitive to the families we serve. We will invite our district cultural liaisons, the Education Equity committee and school building staff to set a welcome and inclusive tone for the upcoming school year. We view this as a critical piece, particularly when we know the achievement gap between whites and students of color persists.**

**During two of these sessions, we will include Early Childhood and Kindergarten teachers as well as building principals to interact with families, to start building the relationships that will engage families in this education partnership. Further, Early Childhood and Kindergarten staff at these seven buildings will work together to share data and discuss the progress children have made in their Early Childhood settings by providing a "Data Day" for these staff.**

**In addition, each child will receive a Literacy Box filled with materials they can use over the summer to help them maintain the gains they made in their Early Childhood setting. Each Literacy Box will contain paper, glue sticks, paints, books and various writing tools.**

## RESOLUTION

### Acceptance of Grant Awards to Duluth Public Schools

41

WHEREAS, Minnesota Statute 465.03 requires a school district to accept grants by resolution expressed in the terms prescribed by the donor in full; and,

WHEREAS, acceptance of the grant in accordance with the donor's terms is in the best interest of the Duluth Public Schools:

NOW, THEREFORE, BE IT RESOLVED that the Duluth Public Schools does accept the below-described grants from said organizations in accordance with the terms set forth herein.

BE IT FURTHER RESOLVED that the Duluth Public Schools wishes to extend its grateful appreciation to these various organizations.

	Organization	Author/Contact	Project Title	Award Amount	Terms
1.	Essentia Health	Deidre Quinlin	Habitat Health Services Program Grant	\$20,000	Funds from this grant award will be used to support Habitat's Health Services Program.
2.	Ordean Foundation	Deidre Quinlin	Habitat Teen Parent Collaborative Grant	\$40,000	Funds from this grant award will be used to continue a cost effective system of core services and supports for pregnant and parenting students and their children in the District to be provided in partnership with community stakeholders.
3.	Minnesota Department of Education	Charlie Leibfried	Race to the Top Early Learning Challenge Title I Pre K Incentives Grant		Funds from this grant award will be used to support the opening of a Title I Early Childhood classroom at Myers-Wilkins Elementary School to serve primarily three year olds that have family incomes which fall below 200 percent of the 2013 Federal Poverty Guidelines.
4	Minnesota Department of Education	Edye Howes	2013-15 Success for the Future Grant	\$69,452 - July 1, 2013 - June 30, 2014  \$69,452 - July 1, 2014 - June 30, 2015	Funds from this grant award will be used to fund Indian Education staff positions and provide educational opportunities to American Indian students, parents, and staff in Duluth Public Schools.
5	Southern St. Louis County Family Services Collaboration	Pam Rees	Family Services Collaboration Grant	\$16,175	Funds from this grant award will be used to train Head Start staff on the Circle of Security Model of Parent-Child Interaction.
6	Northland Foundation	Pam Rees	Alignment Grant	\$2,500	Funds from this grant award will be used to continue work on Pre K to Grade Three alignment.



August 26, 2013

Duluth School District ISD 709  
Attn: Diedre Quinlan  
215 North First Avenue East  
Duluth MN 55802

Dear Ms. Quinlan,

At its recent meeting, the Essentia Health Corporate Contributions Committee reviewed your application and voted to make a donation to you for your Habitat Health Services programs. We are pleased to provide on behalf of Essentia Health a contribution of \$20,000.00.

Within one year of receiving this donation, the Corporate Contributions Committee would like a report on the results of your program or event. You can use the Minnesota Common Report Form, which can be found online.

This contribution represents a corporate donation from all of our entities.

Sincerely,

Sister Kathleen Hofer  
Active Board Chair  
Corporate Contributions Chair



# ORDEAN

FOUNDATION

August 13, 2013

William L. Gronseth, Superintendent  
 Duluth Public Schools, ISD 709  
 215 North First Avenue East  
 Duluth, MN 55802

Dear Mr. Gronseth:

I am pleased to inform you that the Ordean Foundation Board of Directors has acted favorably on your request. The Board agreed to provide a \$40,000 grant for Habitat Teen Parent Collaborative for a period not to exceed one year.

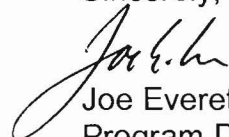
Enclosed are three copies of the Grant Agreement for your signature.

Please return the three signed copies and Board resolution to this office as soon as they are completed so we may sign and return an executed contract copy to you. Please be advised of the following information:

- (1) The Agreement requires the adoption and submission of a resolution of your Board of Directors accepting the grant offer and its terms;
- (2) If Ordean's payment is due upon execution of this agreement, a letter of request for payment should accompany the signed contracts;
- (3) Ordean processes payment requests every other week.

Please note that we require grant recipients to use the Minnesota Common Report Form for all progress and final reports. I have enclosed three copies in the copy of the letter sent to Ms. Deidre Quinlan for her to use. Thank you for your cooperation.

Sincerely,

  
 Joe Everett  
 Program Director

Enc.

Cc: Deidre Quinlan, Habitat Director

**RECEIVED**

AUG 15 2013

Office of the Superintendent

## OFFICIAL GRANT AWARD AGREEMENT

<b>GRANT AWARDEE INFORMATION</b> <b>ORGANIZATION/AGENCY</b> <b>IDENTIFIED OFFICIAL WITH AUTHORITY/TITLE</b> <b>FULL ADDRESS</b> <b>CITY/STATE /ZIP</b> <b>PHONE/ FAX</b> <b>EMAIL</b>	<b>Duluth ISD #709</b> William Gronseth, Superintendent 215 N. 1st Ave E Duluth, MN 55802, MN 55411 (218)336-8752 william.gronseth@duluth.k12.mn.us																														
<b>PROGRAM CONTACT REPRESENTATIVE/TITLE</b> <b>ORGANIZATION/AGENCY</b> <b>ADDRESS</b> <b>CITY/STATE /ZIP</b> <b>PHONE/ FAX</b> <b>EMAIL</b>	<b>Edith Howes, Program Contact</b>  215 N. 1st Ave E Duluth, MN 55802 (218)336-8700 ext. 1152 edith.howes@duluth.k12.mn.us																														
<b>MDE GRANT PROGRAM TITLE</b>	<b>2013-2015 Success for the Future</b>																														
<b>FUNDING INFORMATION</b>  <b>FUNDING SOURCE/LEGISLATIVE AUTHORITY:</b> Success for the Future Indian Ed. – Minnesota Statute 124D.81  <b>SWIFT VENDOR ID#: 0000194009</b>  <b>UFARS CODE: 01F320</b>	<table border="1"> <thead> <tr> <th>YEAR 1 AWARD</th> <th>SFY14</th> <th>SFY15</th> </tr> </thead> <tbody> <tr> <td>\$69,452.00</td> <td>\$60,006.53</td> <td>\$9,306.57</td> </tr> <tr> <th colspan="3">Funding Codes</th> </tr> <tr> <td colspan="3">FY14 1000-E3732301-E37A231</td> </tr> <tr> <td colspan="3">FY 15 1000-E3732302-E37B231</td> </tr> <tr> <th>YEAR 2 AWARD</th> <th>SFY15</th> <th>SFY16</th> </tr> <tr> <td>\$69,452.00</td> <td>\$60,006.53</td> <td>\$9,306.57</td> </tr> <tr> <th colspan="3">Funding Codes</th> </tr> <tr> <td colspan="3">FY 15 1000-E3732301-E37A231</td> </tr> <tr> <td colspan="3">FY 16 1000-E3732302-E37B231</td> </tr> </tbody> </table>	YEAR 1 AWARD	SFY14	SFY15	\$69,452.00	\$60,006.53	\$9,306.57	Funding Codes			FY14 1000-E3732301-E37A231			FY 15 1000-E3732302-E37B231			YEAR 2 AWARD	SFY15	SFY16	\$69,452.00	\$60,006.53	\$9,306.57	Funding Codes			FY 15 1000-E3732301-E37A231			FY 16 1000-E3732302-E37B231		
YEAR 1 AWARD	SFY14	SFY15																													
\$69,452.00	\$60,006.53	\$9,306.57																													
Funding Codes																															
FY14 1000-E3732301-E37A231																															
FY 15 1000-E3732302-E37B231																															
YEAR 2 AWARD	SFY15	SFY16																													
\$69,452.00	\$60,006.53	\$9,306.57																													
Funding Codes																															
FY 15 1000-E3732301-E37A231																															
FY 16 1000-E3732302-E37B231																															
<b>AWARD PERIOD/TYPE/AMOUNT</b>																															
<b>START DATE:</b> July 1, 2013 <b>END DATE:</b> June 30, 2015  This is a 2 year grant only.	<b>ACTION TYPE:</b> Original/Initial Award \$69,452.00 July 1, 2013 - June 30, 2014 \$69,452.00 July 1, 2014 - June 30, 2015 \$138,904.22 <b>TOTAL Award</b>																														
<b>MDE KEY STAFF CONTACT INFORMATION</b>																															
<b>AUTHORIZED REPRESENTATIVE/PROGRAM</b> <b>Shirley Kampa</b> Phone: 651-582-8372 Fax: 651-582-8291 Email: shirley.kampa@state.mn.us	<b>GRANTS SPECIALIST</b> <b>Lisa Boemer</b> Phone: 651-582-8510 Fax: 651-582-8492 Email: lisa.boemer@state.mn.us																														

# *Family Services Collaborative*

45

*Southern St. Louis County*

1701 N. 9<sup>th</sup> Avenue Virginia, MN 55792

Phone: 218.749-8130 • cell: 218.780-8209

• e-mail: [ecarr@isd2142.k12.mn.us](mailto:ecarr@isd2142.k12.mn.us)

• [www.nscfsc.k12.mn.us](http://www.nscfsc.k12.mn.us)

6/14/2013

Pam Rees  
Duluth Schools Head Start  
2102 Blackman Avenue  
Duluth, MN 55811

Dear Pam,

Thank you for your request to the Family Service Collaborative of Southern St. Louis County to provide training and build staff capacity within Head Start.

At the Board meeting last week, funding for the 2013-2014 year was approved for \$16,175. We have developed a new matrix scoring method and I wanted to share some feedback for an improved proposal in the future:

Good prevention and early intervention work

More formal proactive plan to address racial and socio-economic issues

A 2013-2014 contract will be forwarded to you in July. Thank you for building your capacity to serve young children in Duluth Schools.

Respectfully,



Edie Carr, Director

*"Improving the lives of children and their families by working together  
to provide integrated prevention and early intervention strategies."*

## Duluth Head Start - ISD #709 / Project #13-10523 / PreK to Grade 3 Team Grant - Grant Approved

noreply@salesforce.com [noreply@salesforce.com] on behalf of Northland Foundation Grants [grants@northlandfdn.org]

**Sent:** Wednesday, August 28, 2013 10:28 AM

**To:** pamela m. rees

**Attachments:** FINAL FORM 2013 PreK to Gr~1.doc (43 KB) ; Small App Award Letter - P~1.pdf (184 KB)

---

Dear Pam Rees:

Congratulations! The Northland Foundation has approved a grant for **\$2,500.00** to **Duluth Head Start - ISD #709** for the ***PreK to Grade 3 Team Grant***, project # 13-10523. The award letter, Agreement of Grantee, and ACH Credit Authorization Agreement for automatic deposits are attached. Please notify me should you have difficulty accessing the documents or if you need further information.

Please use the attached grant final report, which is due on April 30, 2014.

Regards,

**Carole Saylor**, Grants Manager/Board Administrator

**Northland Foundation**  
202 West Superior Street, Suite 610  
Duluth, MN 55802

p. 218-723-4040 ext. 213 | f. 218-723-4048  
[carole@northlandfdn.org](mailto:carole@northlandfdn.org) | [www.northlandfdn.org](http://www.northlandfdn.org)

[Facebook](#) [Twitter](#) [LinkedIn](#)

**DISTRICT 709**  
**FIELD TRIP REQUESTS**

In accordance with School District Policy District 6160, District 709 recognizes properly planned, well conducted, and carefully supervised field trips may be a vital part of the curriculum. School field trips are encouraged within available resources and requirements outlined below.

**DIRECTIONS:** All staff are required to submit a Field Trip Request **prior** to the field trip being finalized with the involved students and to:

- Receive administrative and/or extra-curricular coordinator approval for all instructional and supplementary field trips
- Receive administrative review and school board approval for all extended trips (Exceptions may be granted by the school board chair to accommodate emergencies.)

**DEFINITIONS:**

Instructional Trips - Trips that take place during the school day, relate directly to a course of study, and require student participation. Fees may not be assessed against students.

Supplementary Trips - Trips in which students voluntarily participate in and which often take place outside the regular school day, but do not include overnight stays. Financial contributions may be requested of students.

Extended Trips Within Minnesota, the Continental United States, or a Foreign Country - Trips that involve one or more overnight stops within Minnesota, the Continental United States, or a Foreign Country (externally sponsored) and may be instructional or supplementary and are voluntary in nature. Extended field trips require school board approval prior to the trip.

**INSTRUCTIONAL TRIP ACTION**

Principal:  Approved Name: \_\_\_\_\_  
 Not Approved Date: \_\_\_\_\_

**SUPPLEMENTAL TRIP ACTION**

Principal:  Approved Name: \_\_\_\_\_  
 Not Approved Date: \_\_\_\_\_

**Instructional/Supplemental Trips need not be sent to District office.**

**EXTENDED/EXTERNALLY SPONSORED TRIP ACTION**

Principal:  Recommended Name: Jane Smith  
 Not Recommended Date: 2/14/13

Assistant Superintendent:  Recommended Name: \_\_\_\_\_  
 Not Recommended Date: \_\_\_\_\_

School Board:  Approved Name: \_\_\_\_\_  
 Not Approved Date: \_\_\_\_\_

**All extended trip proposals must be sent to the Assistant Superintendent's Office to be placed on the Education Committee meeting agenda for approval.**

# FIELD TRIP REQUEST FORM

Date of Submission:

Type of Trip:      Instructional      Supplementary      Extended      Externally Sponsored\*

1. Organization/Grade/Course Planning Trip: HOSA 11<sup>th</sup> and 12<sup>th</sup> Grade

2. Contact Person (Responsible for Checklist Completion): Kimberly S. Olson

3. Field Trip Date(s): Oct. 10<sup>th</sup>-12<sup>th</sup>, 2013                      Destination: Little Falls, MN Camp Ripley

4. Field Trip Overview (Include events, establishments and locations): MN HOSA Medical Reserve Corps Camp, Three day intense training for all potential MRC Student Volunteers- Partnered with MN National Guard.

5. Field Trip Departure from School (Date and Time): Oct. 10<sup>th</sup> 12:00 Tentive time

Field Trip Return to School (Date and Time): October 12<sup>th</sup> 4:00pm

6. Objectives of Field Trip: MN HOSA Medical Reserve Corps Camp, Three day intense training for all potential MRC Student Volunteers- Partnered with MN National Guard. See attachment -flyer.

7. Relationship to Curriculum or Student Learning: Leadership, teamwork, POS and Career Pathway exploration, Partnership for CTE, Implementing of HSP(Health Science Programs) Parliamentary procedures, citizenship.

8. Planned Follow-up Field Trip Activities:

9. Field Trip Budget Request

Estimated Expenses		
Total Admission/Fees	\$25.00 covers <i>Student Pay / 1 teacher</i>	\$ 25.00 each
Total Meals		\$0
Total Lodging	MRC Grant	\$ Free
Total Transportation		\$1000.00
X School District Vehicle(s) VAN		Paid by students
<input type="checkbox"/> Commercial Transportation Carrier ~ Name: _____		~25.00-35 each
<input type="checkbox"/> Private Vehicle (requires certificate of insurance) ~ Name: _____		
Total Additional Stipends:		\$ 200.00
Other: Students are self-pay		\$ -0-
<b>Total</b>		<b>\$</b>

Revenues		
District Budget	Code: _____	\$ _____
Booster Group		\$ _____
Donations		\$ _____
Student Fees		\$ _____
Total Additional Stipends:		\$ _____
<b>Total</b>		<b>\$ _____</b>

*Student pay*  
*Adm. Fee 25.00*  
*tx 25.00*  
*Food 0*  
*Lodging 0*  
*to be determined*  
*Student self pay*

*Instructor*  
*Adm. Fee 25.00*  
*transp. 25.00*  
*Food 0*  
*Lodging 0*  
*Sub 200.00*  


---

*TT*  
*250.00*  
*Perkins*

11. Reviewed/Completed Request Checklist:      Yes      No

\*The Assistant Superintendent's office must receive a signed waiver form for each student participating in an externally sponsored trip prior to the departure date.

**RETURN COMPLETED REQUEST TO BUILDING PRINCIPAL**

## FIELD TRIP REQUEST CHECKLIST - All Field Trips

DIRECTIONS: Please complete checklist. No attachments are necessary.

- Develop and Communicate Student Discipline Expectations
- Forward Field Trip Explanation and Fee Structure Letter Sent to Parents/Guardians
- Collect Parent/Guardian Permission for Student Participation in Field Trip (Include request for special information - i.e. allergies, medications, special needs.)
- Gain Access to Cell Phone for Field Trip
- Plan Arrangements for Early Pick-Up or Late Drop-Off Students (if necessary).  
**Guide:** May choose to leave message on school voice mail to help with late drop off.
- Plan Meal Arrangements (if necessary)  
**Reminder:** Notify food service of non-participation.
- Plan Administration of Student Medication and First Aid Needs (if necessary)  
**Guide:** Contact School Nurse.
- Develop and Communicate Action Plan if Student Gets Lost on Trip
- Arrange Adult Chaperones for Field Trip (if necessary)  
**Guide:** One (1) adult for every twenty (20) students depending on field trip. Parent volunteers are encouraged when possible or appropriate.
- Develop and Communicate Teacher and Adult Chaperone Expectations  
**Example:** Supervision duties, no smoking, no alcohol
- Planned Itinerary

**TIME**

**LOCATION**


- Maintain Student Roster and Check-in/Check-out Procedure
- Arrangement for Safety Needs (i.e. crossing guards)

Signature of Contact Person: \_\_\_\_\_

## FIELD TRIP REQUEST CHECKLIST – Extended/Externally Sponsored Trip Only

DIRECTIONS: Please complete checklist and attach all appropriate materials.

- Develop and Complete Field Trip Itinerary and Emergency Telephone Contacts Letter to Parents/Guardians  
**Note:** Attach tentative planned itinerary.
- Arrange Funding of Expenses During Trip
- Arrange Meal Plans
- Arrange Lodging Plans and Room Assignments
- Collect Family Emergency Information for Students  
**Example:** Home phone numbers, emergency contacts, medical information
- Additional Information  
**Note:** Provide any additional information.

Signature of Contact Person: \_\_\_\_\_



## MN HOSA 2013-14 Calendar

October 10 <sup>th</sup> -12 <sup>th</sup>	MN HOSA Medical Reserve Corps Camp Three day intense training for all potential MRC Student Volunteers-Partnered with the MN National Guard. Registration will be on line for HOSA members	Little Falls, MN- Camp Ripley
November 7 <sup>th</sup> – 8 <sup>th</sup>	MN HOSA Fall Conference Dynamic speakers, presentations on careers and healthcare possibilities, exhibitors and tours. Registration will be on line. Officer Candidate will be sent out and also located on the website.	Holiday Inn East- St. Paul
December 12 <sup>th</sup> -13 <sup>th</sup>	State Officer Training/MRC training - Leadership training for new state officers including teambuilding, Etiquette, leadership activities and conference planning. MRC teams/volunteers will begin their orientation and training to help get started with community projects and HOSA event.	Best Western Kelly Inn- St. Cloud
January 3 <sup>rd</sup> , 2014	Rochester Mid- Winter Competitive Event Day Preview of selected HOSA Competitions to see how you are doing and how you can improve before the state Conference.	Rochester Community College
January 17 <sup>th</sup>	Metro Mid- Winter Competitive Event Day Preview of selected HOSA Competitions to see how you are doing and how you can improve before the state Conference.	Argosy University- Eagan
February---	Duluth Mid-Winter Competitive Events Day Preview of selected HOSA Competitions to see how you are doing and how you can improve before the state Conference.	Lake Superior College- Duluth
April 2 <sup>nd</sup> - 4 <sup>th</sup>	HOSA State Spring Conference Competitions of over 40 events, Exhibits and presentations Recognition and awards for all event finalists.	Best Western Kelly Inn- St. Cloud
June 25 <sup>th</sup> - 28 <sup>th</sup>	National HOSA Leadership Conference Compete with participants from all over the United states, Puerto Rico, Alaska, and Hawaii in a competition that you have excelled in at the State Level.	Orlando, Florida

\*\* Volunteer Opportunities with Cystic Fibrosis will be relayed as soon as announced

\*\*Legislative Day is TBD

\*\* Science Museum TBD by exhibit available

\*\* MRC training opportunities will be relayed when they are opened up.

If anyone would like to do a HOSA kickoff with a HOSA presentation- let me know.

**JOIN US**  
**at**  
**MN HOSA's MRC Camp**  
**October 10<sup>th</sup> -12<sup>th</sup>**

**“EMERGENCY \* RESPONSE \* ACTION”**

Partners in Action: MN HOSA MRC, MN National Guard, MN Highway Patrol

Location: Camp Ripley- Little Falls, MN

Registration: \$25.00/ person

Registration: Online- [www.hosa.org](http://www.hosa.org) (must be HOSA member) Open- September 5<sup>th</sup> Prerequisite: Online- NIMS

Curriculum IS-700a (<http://training.fema.gov/emiweb/is/is700a.asp>)

Deadline-

**September 17<sup>th</sup>**

**Day 1- Thursday- Deployment / Training**

- 1:00 pm** Bus to deploy at determined sites in Metro area  
 “Train as you Deploy”- Training assignment on Bus to be completed by arrival.
- 3:00 pm** Arrival at Camp Ripley
- 5:30 pm** Dinner
- 6:30 – 8:30 pm** General Session:  
 Introductions /Announcements / Professionalism and Leadership in a Disaster  
 Orientation to MN HOSA Medical Reserve Corps
- 8:45 pm - 10:30 pm** Open time- Rec Center
- 11:00 pm** Curfew- to barracks

**Day 2- Friday- Training/ Response**

- 6:30 am- 7:30 am Breakfast
- 8:00 am- 12:00 pm Medical Training: CPR/ EMT/ SIMS (determined on level of pre-training.)
- 12:05 pm - 12:40 pm Lunch – Pizza
- 12:45 pm – 3:15 pm NIMS 100/ Disaster Drill
- 3:15 pm – 5:00 pm Careers in Emergency Management/Action (Exhibits/ hands on demos)
- 5:15 pm 6:15 pm Dinner
- 6:30 pm – 8:30 pm Psychological First Aid and DRAT (Disaster Response Action for Teens)
- 8:30 pm 10:30 pm Bonfire/Rec Center (TBD by weather)
- 11:00 pm Lights out

**Day 3- Saturday- Review / Action**

- 6:30- 7:30 am Breakfast
- 7:30 am – 8:30 am Bunks cleaned/ personal items stored. Personnel Walk through
- 8:40 am- 9:30 am Debriefing of Camp- Discussion Groups / Disaster setting and response
- 10:00 am – 10:50 am Orientation to HOSA/MRC – How to be a MN HOSA MRC rep/? Register on computers  
 for MRC membership
- 11:00 am Evaluations completed
- 11:15 am Lunch
- 12:00pm Busses Depart

**Certificates, Emergency kit, membership and t-shirt for all participants**

## Camp Ripley- Minnesota HOSA MRC Camp

Name of Project: **“Build People - Build a Task- Build MN HOSA MRC**

52

Focus: Connecting Youth with Disaster Preparedness- Build Membership- Promote Leadership

Information, training and development of a specialized team of youth volunteers within MN HOSA to address disaster preparedness, reduce the risk and understand recovery.

Goals:

- To prepare community emergency service roles while working with youth in areas of education and promotion of good health and safety.
- To foster community change in growth of members through connecting youth with Public Health initiatives in preparing and presenting educational services to peers and communities.
- Add value to member’s leadership roles in life by teaching and discovering how to use their talents in preparing others for disasters in their homes, schools and communities.
- Reduce stress in members by receiving knowledge and training of disasters and recovery through the education of others involved in Emergency situations.

Impact: This project will introduce students in disaster preparedness, foster community resiliency, and build leadership skills through education, training and connections with other emergency response partners. This is to lead to student’s confidence to go into their communities to teach others on being prepared making communities ready and safer in the time of possible disasters.

Training will follow the goals stated in the MN HOSA MRC Unit application- including but not limiting educational opportunities:

1. CPR & First Aid
2. Psychological First Aid
3. IS 100, 700
4. DRAT (Disaster Response Action for Teens)/ Plan 9

Tentative Agenda- Items discussed for the camp

October 10<sup>th</sup> – Thursday- Arrival at 10 am- 10 pm

October 11<sup>th</sup>- Friday- 7:30 am – 10 pm

October 12<sup>th</sup> - Saturday- 7:30 am- 1:00 pm

- Pre-session on bus before arrival
- General Session for Introductions, rules and camp plan
- CPR/First Aid (or Emergency training in accordance to previous education)
- Medical Training with SIMS demonstration
- Disaster Training- DRAT- Emergency Readiness
- Disaster Response- Drills (followed by discussion)
- Psychological First Aid
- Leadership sessions
- Disaster Risk reduction planning/ Management- (Who does it? How can you help?)



## DENFELD SENIOR HIGH SCHOOL

401 N. 44<sup>th</sup> Ave. W.

Duluth, Minnesota 55807

Main Office: 218/336-8830 • Main Office Fax: 218/336-8844

• Athletics Fax: 218/336-8842



53

August 6, 2013

Assistant Superintendent for Teaching and Learning  
ISD 709  
215 North First Avenue East  
Duluth, Minnesota 55802


The following student completed her high school graduation requirements at ALC and requests a diploma.

I would like to order a Denfeld High School Diploma for:

Name	Bryanna K. Schwarzkopf
Date of Graduation	July 26, 2013

Thank you.

Sincerely,



Tonya M. Sconiers  
Principal



## DENFELD SENIOR HIGH SCHOOL

401 N. 44<sup>th</sup> Ave. W.

Duluth, Minnesota 55807

Main Office: 218/336-8830 • Main Office Fax: 218/336-8844

• Athletics Fax: 218/336-8842



54

August 6, 2013

Assistant Superintendent for Teaching and Learning  
ISD 709  
215 North First Avenue East  
Duluth, Minnesota 55802


The following student completed her high school graduation requirements at ALC and requests a diploma.

I would like to order a Denfeld High School Diploma for:

Name	Savanna K. Jordan-Seavey
Date of Graduation	July 26, 2013

Thank you.

Sincerely,

  
Tonya M. Sconiers  
Principal



ALC/UNITY HIGH SCHOOL  
INDEPENDENT SCHOOL DISTRICT 709  
215 NORTH FIRST AVENUE EAST  
DULUTH, MINNESOTA 55802  
PHONE: (218) 336-8756  
FAX: (218) 336-8770

August 20, 2013

William Gronseth  
Ind. School Dist. 709  
215 N. 1<sup>st</sup> Ave: E.  
Duluth, MN 55802

Dear Mr. Gronseth,

This is to certify that the person listed below has completed all the requirements for High School graduation from the Duluth Public Schools and is eligible to receive their diploma from the Duluth Public Schools.

<u>Name of Graduate / School</u>	<u>Graduation Date</u>
RE-REQUEST from 5/9/2013	
<b>DULUTH PUBLIC SCHOOLS</b>	
Thea Arletta Mae Pelfrey	5/8/2013

Please send diploma to Brenda at Unity

Adrian Norman  
Assistant Principal, Unity ALC

bmv



ALC/UNITY HIGH SCHOOL  
 INDEPENDENT SCHOOL DISTRICT 709  
 215 NORTH FIRST AVENUE EAST  
 DULUTH, MINNESOTA 55802  
 PHONE: (218) 336-8756  
 FAX: (218) 336-8770

August 13, 2013

William Gronseth  
 Ind. School Dist. 709  
 215 N. 1<sup>st</sup> Ave. E.  
 Duluth, MN 55802

Dear Mr. Gronseth,

This is to certify that the persons listed below have completed all the requirements for High School graduation from the Duluth Public Schools and is eligible to receive his/her diploma from the Duluth Public Schools.

Name of Graduate / School

Graduation Date

**DULUTH PUBLIC SCHOOLS**

**Adam Nicholas Beeman**

**6/19/2013**

Please send diplomas to Brenda at Unity.

Adrian Norman, Asst. Principal

Brenda VanDell, Office Support Specialist  
 Unity/ALC High School



ALC/UNITY HIGH SCHOOL  
 INDEPENDENT SCHOOL DISTRICT 709  
 215 NORTH FIRST AVENUE EAST  
 DULUTH, MINNESOTA 55802  
 PHONE: (218) 336-8756  
 FAX: (218) 336-8770

August 13, 2013

William Gronseth  
 Ind. School Dist. 709  
 215 N. 1<sup>st</sup> Ave. E.  
 Duluth, MN 55802

Dear Mr. Gronseth,

This is to certify that the person listed below has completed all the requirements for High School graduation from the Duluth Public Schools and is eligible to receive their diploma from the Duluth Public Schools.

Name of Graduate / School

Graduation Date

**DULUTH PUBLIC SCHOOLS**

Seth Michael Shykes

7/25/13

Please send diploma to Brenda at Unity

Adrian Norman  
 Assistant Principal, Unity ALC

bmv



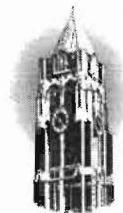
## DENFELD SENIOR HIGH SCHOOL

401 N. 44<sup>th</sup> Ave. W.

Duluth, Minnesota 55807

Main Office: 218/336-8830 • Main Office Fax: 218/336-8844

• Athletics Fax: 218/336-8842



58

September 3, 2013

Assistant Superintendent for Teaching and Learning  
ISD 709  
215 North First Avenue East  
Duluth, Minnesota 55802


The following student completed his high school graduation requirements at Denfeld and requests a diploma, per Jan Seaman, his case manager.

I would like to order a Denfeld High School Diploma for:

Name	Joseph Jordon Bowens
Date of Graduation	September 05, 2013

Thank you.

Sincerely,

  
Tonya M. Sconiers  
Principal