

Notice of Regular Meeting

The Board of Trustees Devine ISD

A Regular Meeting of the Board of Trustees of Devine ISD will be held February 16, 2026, beginning at 6:45 PM in the Administration Building, 605 W Hondo Ave., Devine, TX 78016.

The board will be attending the DLA Graduation Ceremony at the DSAC Auditorium at 6:30 p.m. The February board meeting will follow at the Administration Building at 605 W Hondo Ave.

The subjects to be discussed or considered or upon which any formal action may be taken are as listed below. Items do not have to be taken in the order shown on this meeting notice.

Unless removed from the consent agenda, items identified within the consent agenda will be acted on at one time.

1. **Call to Order, Roll Call and Declaration of Quorum**
2. **Pledge of Allegiance and Invocation**
3. **Citizen Communication**
 - A. Public Comment for Non-Agenda Items
 - B. Public Address for Items on the Agenda
4. **School Bus Safety Belt Report** 4
5. **Public Hearing on TAPR, Special Ed Compliance, and Safety** 7
6. **Administrative Reports and Discussion**
 - A. Central Office Reports
 1. Superintendent's Reports, Todd Grandjean
 - a. Monthly Report on Personnel and Board Priorities:
 1. Increase student success and continue a tradition of student achievement
 2. Continue successful partnerships with the community, teachers and parents to support our schools and achieve student success
 3. Align facilities and technology improvements with needs and career opportunities
 4. Maintain Highly Qualified teachers and retain staff
 5. Increase trade career opportunities and continue to develop enhanced technology resources for all students
 - b. Monthly Activity Calendar
 - c. District Event Calendar
 - d. 2023 Bond Projects Report
 - e. Safety & Security Report, Michael Gomez
 2. Director of HR/Info Mgmt Monthly Report, Dawn Schneider
 - a. Monthly Report on Personnel, Testing and Assessment, Counseling,

Student Services	
b. STAAR EOC Report	
3. Director of Special Education Monthly Reports, Jenni Hagdorn	
a. Monthly Reports on Student Enrollment, ARDs, 504, and Training	
B. Business Office Reports, Chief Financial Officer, Shannon Ramirez	
1. Monthly reports on taxes, cafeteria, investments, cash flow	
2. Payment of Bills	
C. Principals' Reports on Campus Sports/Activities	
1. Devine High School Principal's Report, Michael Gomez	
2. Devine Middle School Principal's Report, Kandi Darnell	
3. Devine Intermediate School Principal's Report, Lysandra Reyes	
4. JJ Ciavarra Elementary School Principal's Report, Mark Raygosa	
5. Devine Learning Center/DAEP Principal Monthly Reports, Jodi Ann Dzierzanowski	
D. Directors' Reports	
1. Monthly report on finances, department acquisitions, travel and student services provided.	
7. Consent Agenda	
A. Minutes of Board Meeting (s)	41
B. Budget Amendment	44
C. Public School Week Proclamation	47
8. Action Item(s):	
A. Consider and take possible action to approve 2026-2027 Instructional Calendar	
B. Consider and Take Possible Action to Set Budget Workshop Dates	49
C. Consider and Take Possible Action Regarding Resolution related to Texas Education Code Section 25.0823 and Prayer in Schools	62
D. Consider and Take Possible Action on DMS Gym Floor	66
E. Consider and Take Possible Action on JOC Contracts for HVAC and Kitchen	72
9. Closed Session	
A. Personnel (TGC 551.074)	
1. Personnel Update	
2. Consider and discuss superintendent's goals and evaluation instrument	
B. Considering discipline of a public school child, or complaint or charge against personnel. (TGC 551.082)	
10. Reconvene from Closed Session	
11. Action Items Discussed in Closed Session	
A. Consider and take possible action to adopt 2026 Superintendent's Goals and Evaluation Instrument	
12. Adjournment	

If, during the course of the meeting, discussion of any item on the agenda should be held in a closed meeting, the Board will conduct a closed meeting in accordance with the Texas Open Meetings Act, Government Code, Chapter 551, Subchapters D and E. Before any closed meeting is convened, the presiding officer will publicly identify the

section or sections of the Act authorizing the closed meeting. All final votes, actions, or decisions will be taken in open meeting.

The notice for this meeting was posted in compliance with the Texas Open Meeting Act on _____,
at _____.

For the Board of Trustees



Devine Independent School District Board of Trustees Agenda Document

Meeting Date: 02/16/2026

Agenda Item: Retrofit buses with 3-point seat belts

Background Information:

CNC — Transportation Management: Transportation Safety

A district shall meet or exceed the safety standards for school buses established by the Department of Public Safety (DPS), with the advice of the Texas Education Agency (TEA). A district that fails or refuses to meet these safety standards for school buses is ineligible to share in the transportation allotment until the first anniversary of the date the district begins complying with the safety standards. Education Code 34.002; Transp. Code 547.102; 37 TAC 14.51-.52

Administrative Consideration:

HB 546 adopted in the 89th Legislative session requires school districts to ensure that all school buses have 3-point seat belts. School districts should either retrofit existing buses or purchase new compliant buses.

Budgetary Consideration:

Fund Balance

Supporting Documents:

Quotes attached

Recommendation:

This is a report only.

The Transportation Department recommends continuing purchasing 2 buses a year.

This will ensure we are compliant by 2029.

Respectfully Submitted by:

Kandy Stein
Director of Operations/Custodial Services

Approved by:

Dr. Todd Grandjean
Superintendent of Schools

Subject: SEAT BELT RETROFIT & COST

Juan Rodriguez <Juan.Rodriguez@holtruckcenters.com>

Sun, Nov 30, 2025,
5:59 PM

to kandy.stein@devineisd.org, Eric Stuart

Good evening Ms. Kandy,

Currently, equipment availability is approximately **8–10** weeks from the date we receive a purchase order. There is also an option to complete the retrofit at the school's location. If personnel are available to assist with removing seat backs, unloading trailers, and disposing of old equipment, this can reduce costs. Please note that on-site work requires certain logistics, including:

- A disposable container for old seat backs
- A forklift
- Shop bays available for our team to work on the buses

Given the scope of these projects, I recommend scheduling an on-site meeting and evaluation of buses and review logistics. This will allow us to involve all necessary parties and ensure minimal disruption to the transportation department.

- Units highlighted in **red** do not meet year or make requirements.

Unfortunately, these units do not qualify for a seatback replacement. To move forward, the floorboard and complete seats would need to be replaced, as these buses were built with a different seat frame. The average cost to complete a bus with a new floorboard and full 3-point seat belt installation is **approximately \$70k**

- Units highlighted in **yellow** meet the **IC** requirements.

At this time, we will not assume liability for any aftermarket units (Blue Bird, Chevy, Ford or Thomas). Only **IC units** will be supported

See the attached pricing information. I've also included a breakdown below. We are keeping the pricing consistent across all Texas school districts:

- **77-passenger buses:** \$33,000–\$35,000 per bus (parts and labor)
 - Labor portion: \$15,000 (60 hours @ \$250/hour)
- **Special needs buses:** \$22,000–\$27,000 per bus (parts and labor)
 - Labor portion: \$11,000 (44 hours @ \$250/hour)

4DRBUAFN16B247283

4DRBUAAN1CB599525

4DRBUAFN08B492126

4DRBUAANXGB721157

4DRBUAFN28B492127

4DRBUAAN4GB720778

4DRBUSKN09B668766

4DRBUC8N4HB377294

4DRBUC8N2HB377293



LONGHORN BUS SALES

LONGHORN BUS SALES

14201 HEMPSTEAD RD
HOUSTON, TX 77040
P:(713) 631-9306
F:(713) 631-4634

ESTIMATE: E180015884

ESTIMATE:

FLEET #

BILL TO
DEVINE ISD - 100852
605 WEST HONDO
DEVINE, TX 78016
P: (210) 772-6914

DELIVER TO
DEVINE ISD - 100852
801 N Teel
DEVINE TX 78016
P: (210) 772-6914

FOB:

WAYBILL:

DATE SHIPPED	SHIP VIA	DATE INVOICE	SALESPERSON	UNIT ID	VIN	TERMS	CUSTOMER REFERENCE
11/30/2025	SELECT SHIPPING		RODRIGUEZ.J			AR	PENDING

QTY SHP	QTY B/O	ITEM	DESCRIPTION	BIN	UNIT PRICE	EXTD PRICE
		REGULAR BUS				
104		180N/2612184C92	SEAT BACK, 42PREV,3PT, 6IN GRY	NOLOC	637.23	66,271.92
4		180N/2518257C91	Seat Back, Gen5 Ic 26 2lg 12d	NOLOC	537.23	2,148.92
4		MIS	LABOR TO RETROFIT PER BUS 60HRS @ \$250		15,000.00	60,000.00
1		FRT	FREIGHT 1 TRUCK LOAD		2,750.00	2,750.00
		SPED BUS				
14		180N/2612184C92	SEAT BACK, 42PREV,3PT, 6IN GRY	NOLOC	498.30	6,976.20
1		180N/2518257C91	Seat Back, Gen5 Ic 26 2lg 12d	NOLOC	527.23	527.23
6		180N/2518346C91	Seat Back, Gen5 Ic 36 2lg 12d	NOLOC	1,016.92	6,101.52
1		MIS	LABOR TO RETROFIT PER BUS 44HRS @ \$250		11,000.00	11,000.00
1		FRT	FREIGHT		1,750.00	1,750.00

ESTIMATE

NO RETURNS OR REFUNDS ON SPECIAL ORDER PARTS OR ELECTRICAL PARTS.

All exchanges or refunds claims MUST be accompanied by this invoice within 15 Days unopened in original containers.

ALL RETURNS SUBJECT TO FIFTEEN PERCENT (15%) RESTOCKING CHARGE.

ALL RETURNS MUST BE SHIPPED PREPAID.

Any warranties on the product sold hereby are those made by the manufacturer. The seller hereby expressly disclaims all warranties, either express or implied, including any implied warranty of merchantability or fitness for a particular purpose, and the seller neither assumes nor authorizes any other person to assume for it any liability in connection with the sale of said products.

WE ARE NOT RESPONSIBLE FOR ANY LABOR ON PARTS NOT INSTALLED BY OUR SHOP.

Terms of Payment: Unless specific terms of payment are stated above, which shall then be the governing terms hereof, this invoice shall otherwise be due and payable as follows: Parts and Service 30 days from the invoice date; Truck/Equipment sales in advance, prior to delivery of the truck/equipment; A service charge of 1.5% per month will be charged on the unpaid balance if not paid within terms.

ESTIMATES only valid for 30 days.

SUB-TOTAL	\$ 153,025.79
PREPAY	
TAX	\$ 0.00
SHIPPING	\$ 4,500.00
TOTAL	\$ 157,525.79

SIGNATURE X

PRINT NAME:

REMIT TO: LONGHORN BUS SALES * P.O. BOX 675311 * DALLAS, TX 75267-5311

2024-25 Texas Academic Performance Report (TAPR)

District Name: DEVINE ISD

District Number: 163901

2025 District Accountability Score: D

2025 Special Education Determination Status:

Meets Requirements

This page is intentionally blank.

Texas Education Agency
2024-25 STAAR Performance (TAPR)
 DEVINE ISD (163901) - MEDINA COUNTY

	School Year	State	Region 20	District	African American	Hispanic	White	American Indian	Asian	Pacific Islander	Two or More Races	Special Ed (Current)	Special Ed (Former)	Continuously Enrolled	Non-Continuously Enrolled	Econ Disadv	EB / EL (Current & Monitored)	
STAAR Performance Rates by Tested Grade, Subject, and Performance Level																		
Grade 3 Reading																		
At Approaches Grade Level or Above	2025	77%	76%	74%	*	70%	83%	-	-	-	-	39%	100%	73%	76%	69%	71%	
	2024	74%	72%	66%	-	58%	80%	-	*	*	*	38%	60%	62%	79%	69%	50%	
At Meets Grade Level or Above	2025	52%	50%	38%	*	34%	48%	-	-	-	-	19%	60%	39%	34%	25%	14%	
	2024	48%	46%	39%	-	33%	51%	-	*	*	*	25%	40%	37%	48%	38%	25%	
At Masters Grade Level	2025	23%	20%	6%	*	5%	10%	-	-	-	-	0%	20%	5%	10%	4%	0%	
	2024	21%	19%	8%	-	7%	9%	-	*	*	*	6%	0%	6%	14%	7%	0%	
Grade 3 Mathematics																		
At Approaches Grade Level or Above	2025	71%	69%	49%	*	42%	69%	-	-	-	-	30%	60%	48%	53%	40%	43%	
	2024	70%	68%	50%	-	40%	69%	-	*	*	*	42%	40%	46%	62%	53%	38%	
At Meets Grade Level or Above	2025	46%	44%	17%	*	15%	24%	-	-	-	-	12%	40%	17%	17%	7%	14%	
	2024	42%	39%	23%	-	19%	31%	-	*	*	*	18%	20%	20%	34%	20%	15%	
At Masters Grade Level	2025	19%	18%	5%	*	6%	5%	-	-	-	-	0%	20%	6%	3%	3%	0%	
	2024	15%	13%	8%	-	5%	11%	-	*	*	*	6%	0%	8%	7%	3%	0%	
Grade 4 Reading																		
At Approaches Grade Level or Above	2025	81%	79%	72%	-	65%	84%	*	*	*	*	46%	75%	72%	71%	61%	57%	
	2024	81%	79%	89%	-	86%	95%	-	-	-	-	87%	*	89%	89%	88%	89%	
At Meets Grade Level or Above	2025	54%	52%	34%	-	27%	53%	*	*	*	*	26%	50%	35%	34%	24%	21%	
	2024	51%	48%	45%	-	40%	59%	-	-	-	-	16%	*	47%	39%	40%	22%	
At Masters Grade Level	2025	24%	21%	12%	-	7%	23%	*	*	*	*	3%	13%	11%	13%	7%	7%	
	2024	23%	20%	15%	-	12%	22%	-	-	-	-	3%	*	13%	19%	20%	11%	
Grade 4 Mathematics																		
At Approaches Grade Level or Above	2025	69%	66%	41%	-	39%	47%	*	*	*	*	23%	38%	40%	42%	33%	36%	
	2024	69%	64%	57%	-	52%	68%	-	-	-	-	35%	*	55%	61%	54%	67%	
At Meets Grade Level or Above	2025	47%	43%	19%	-	14%	28%	*	*	*	*	9%	13%	18%	21%	15%	14%	
	2024	46%	41%	30%	-	25%	44%	-	-	-	-	10%	*	32%	25%	25%	11%	
At Masters Grade Level	2025	24%	21%	8%	-	5%	12%	*	*	*	*	3%	13%	6%	13%	4%	0%	
	2024	21%	17%	8%	-	6%	12%	-	-	-	-	3%	*	5%	17%	8%	0%	
Grade 5 Reading																		

Texas Education Agency
2024-25 STAAR Performance (TAPR)
 DEVINE ISD (163901) - MEDINA COUNTY

	School Year	State	Region 20	District	African American	Hispanic	White	American Indian	Asian	Pacific Islander	Two or More Races	Special Ed (Current)	Special Ed (Former)	Continuously Enrolled	Non-Continuously Enrolled	Econ Disadv	EB / EL (Current & Monitored)
At Approaches Grade Level or Above	2025	77%	76%	70%	-	67%	78%	-	*	-	-	42%	*	66%	84%	59%	50%
	2024	79%	78%	76%	*	68%	88%	-	*	-	*	48%	*	74%	85%	72%	88%
At Meets Grade Level or Above	2025	58%	56%	39%	-	34%	54%	-	*	-	-	13%	*	35%	53%	27%	20%
	2024	55%	53%	41%	*	38%	48%	-	*	-	*	14%	*	38%	52%	50%	50%
At Masters Grade Level	2025	30%	27%	17%	-	16%	20%	-	*	-	-	6%	*	14%	28%	8%	20%
	2024	29%	27%	13%	*	13%	14%	-	*	-	*	3%	*	12%	19%	22%	13%
Grade 5 Mathematics																	
At Approaches Grade Level or Above	2025	74%	72%	55%	-	50%	68%	-	*	-	-	23%	*	51%	66%	44%	60%
	2024	77%	75%	81%	*	73%	93%	-	*	-	*	55%	*	80%	85%	89%	100%
At Meets Grade Level or Above	2025	47%	45%	28%	-	24%	39%	-	*	-	-	10%	*	24%	41%	16%	30%
	2024	50%	47%	54%	*	42%	71%	-	*	-	*	34%	*	53%	56%	53%	63%
At Masters Grade Level	2025	22%	20%	10%	-	7%	20%	-	*	-	-	3%	*	8%	19%	5%	0%
	2024	19%	17%	9%	*	9%	10%	-	*	-	*	3%	*	7%	19%	21%	10 13%
Grade 5 Science																	
At Approaches Grade Level or Above	2025	65%	62%	48%	-	45%	59%	-	*	-	-	26%	*	47%	53%	36%	30%
	2024	58%	55%	47%	*	41%	61%	-	*	-	*	24%	*	46%	50%	47%	50%
At Meets Grade Level or Above	2025	31%	27%	13%	-	9%	24%	-	*	-	-	3%	*	10%	25%	6%	0%
	2024	28%	25%	14%	*	15%	15%	-	*	-	*	3%	*	10%	31%	16%	0%
At Masters Grade Level	2025	12%	10%	3%	-	1%	10%	-	*	-	-	0%	*	1%	13%	0%	0%
	2024	11%	10%	5%	*	6%	2%	-	*	-	*	0%	*	3%	12%	0%	0%
Grade 6 Reading																	
At Approaches Grade Level or Above	2025	77%	76%	75%	*	73%	79%	-	*	-	*	21%	100%	72%	86%	70%	73%
	2024	77%	76%	76%	-	71%	84%	-	-	-	*	46%	88%	76%	76%	83%	60%
At Meets Grade Level or Above	2025	56%	54%	43%	*	37%	55%	-	*	-	*	8%	43%	38%	62%	37%	18%
	2024	57%	55%	48%	-	35%	67%	-	-	-	*	23%	38%	46%	55%	48%	40%
At Masters Grade Level	2025	29%	26%	16%	*	16%	17%	-	*	-	*	0%	14%	14%	24%	11%	9%
	2024	26%	23%	19%	-	12%	31%	-	-	-	*	8%	25%	17%	26%	13%	20%
Grade 6 Mathematics																	
At Approaches Grade Level or Above	2025	74%	72%	79%	*	77%	83%	-	*	-	*	42%	100%	77%	86%	75%	82%
	2024	72%	70%	69%	-	60%	83%	-	-	-	*	32%	75%	68%	74%	70%	70%

Texas Education Agency
2024-25 STAAR Performance (TAPR)
 DEVINE ISD (163901) - MEDINA COUNTY

	School Year	State	Region 20	District	African American	Hispanic	White	American Indian	Asian	Pacific Islander	Two or More Races	Special Ed (Current)	Special Ed (Former)	Continuously Enrolled	Non-Continuously Enrolled	Econ Disadv	EB / EL (Current & Monitored)
At Meets Grade Level or Above	2025	40%	36%	30%	*	26%	40%	-	*	-	*	0%	43%	28%	38%	19%	36%
	2024	39%	37%	35%	-	28%	44%	-	-	-	*	16%	50%	32%	45%	35%	40%
At Masters Grade Level	2025	16%	13%	8%	*	6%	12%	-	*	-	*	0%	29%	4%	21%	5%	9%
	2024	14%	12%	9%	-	5%	15%	-	-	-	*	0%	13%	11%	5%	4%	10%
Grade 7 Reading																	
At Approaches Grade Level or Above	2025	76%	75%	75%	-	72%	81%	-	-	-	*	41%	89%	76%	73%	68%	91%
	2024	74%	73%	76%	*	74%	76%	-	-	*	*	20%	67%	76%	77%	77%	*
At Meets Grade Level or Above	2025	54%	52%	45%	-	36%	56%	-	-	-	*	7%	44%	44%	46%	29%	36%
	2024	54%	53%	52%	*	43%	63%	-	-	*	*	15%	33%	50%	58%	46%	*
At Masters Grade Level	2025	27%	24%	22%	-	14%	33%	-	-	-	*	4%	0%	18%	34%	10%	18%
	2024	29%	26%	22%	*	15%	34%	-	-	*	*	0%	17%	20%	27%	19%	*
Grade 7 Mathematics																	
At Approaches Grade Level or Above	2025	55%	50%	51%	-	48%	57%	-	-	-	*	22%	63%	51%	52%	46%	50%
	2024	56%	52%	52%	*	50%	54%	-	-	*	*	20%	67%	52%	52%	55%	11
At Meets Grade Level or Above	2025	33%	27%	23%	-	20%	27%	-	-	-	*	11%	38%	23%	21%	15%	25%
	2024	34%	31%	31%	*	25%	42%	-	-	*	*	5%	33%	31%	29%	23%	*
At Masters Grade Level	2025	11%	7%	2%	-	2%	0%	-	-	-	*	0%	0%	0%	6%	3%	0%
	2024	11%	10%	4%	*	3%	4%	-	-	*	*	5%	0%	1%	14%	0%	*
Grade 8 Reading																	
At Approaches Grade Level or Above	2025	82%	81%	81%	*	79%	86%	-	-	*	*	29%	83%	84%	71%	71%	40%
	2024	81%	79%	78%	*	78%	79%	*	-	-	*	59%	*	80%	71%	80%	60%
At Meets Grade Level or Above	2025	58%	57%	57%	*	51%	72%	-	-	*	*	0%	50%	56%	58%	44%	20%
	2024	56%	54%	46%	*	43%	52%	*	-	-	*	18%	*	49%	36%	52%	40%
At Masters Grade Level	2025	32%	29%	32%	*	21%	56%	-	-	*	*	0%	17%	30%	42%	15%	20%
	2024	29%	26%	20%	*	15%	29%	*	-	-	*	6%	*	21%	14%	24%	40%
Grade 8 Mathematics																	
At Approaches Grade Level or Above	2025	71%	69%	81%	*	77%	89%	-	-	*	*	43%	71%	81%	80%	74%	63%
	2024	72%	69%	80%	*	80%	81%	*	-	-	*	56%	*	82%	76%	83%	*
At Meets Grade Level or Above	2025	47%	44%	62%	*	54%	78%	-	-	*	*	0%	57%	63%	60%	47%	50%
	2024	43%	37%	50%	*	45%	58%	*	-	-	*	19%	*	50%	48%	57%	*

Texas Education Agency
2024-25 STAAR Performance (TAPR)
 DEVINE ISD (163901) - MEDINA COUNTY

	School Year	State	Region 20	District	African American	Hispanic	White	American Indian	Asian	Pacific Islander	Two or More Races	Special Ed (Current)	Special Ed (Former)	Continuously Enrolled	Non-Continuously Enrolled	Econ Disadv	EB / EL (Current & Monitored)
At Masters Grade Level	2025	18%	16%	23%	*	19%	33%	-	-	*	*	0%	0%	19%	40%	10%	13%
	2024	16%	12%	17%	*	13%	23%	*	-	-	*	0%	*	17%	14%	13%	*
Grade 8 Science																	
At Approaches Grade Level or Above	2025	74%	74%	78%	*	75%	83%	-	-	*	*	7%	100%	78%	79%	71%	60%
	2024	70%	69%	62%	*	55%	79%	*	-	-	*	35%	*	63%	61%	64%	60%
At Meets Grade Level or Above	2025	48%	48%	49%	*	43%	61%	-	-	*	*	7%	33%	48%	54%	36%	40%
	2024	44%	43%	38%	*	34%	43%	*	-	-	*	24%	*	37%	39%	40%	40%
At Masters Grade Level	2025	19%	18%	16%	*	15%	19%	-	-	*	*	0%	0%	13%	25%	11%	0%
	2024	17%	16%	9%	*	6%	14%	*	-	-	*	6%	*	9%	11%	12%	40%
Grade 8 Social Studies																	
At Approaches Grade Level or Above	2025	58%	57%	66%	*	62%	78%	-	-	*	*	21%	50%	69%	54%	51%	40%
	2024	60%	60%	64%	*	61%	69%	*	-	-	*	35%	*	66%	54%	60%	40%
At Meets Grade Level or Above	2025	32%	31%	35%	*	31%	42%	-	-	*	*	7%	17%	36%	33%	22%	20%
	2024	33%	33%	33%	*	28%	43%	*	-	-	*	18%	*	34%	32%	32%	40%
At Masters Grade Level	2025	17%	16%	17%	*	15%	22%	-	-	*	*	0%	17%	17%	17%	9%	20%
	2024	17%	17%	16%	*	14%	21%	*	-	-	*	12%	*	17%	14%	20%	40%
End of Course English I																	
At Approaches Grade Level or Above	2025	69%	68%	62%	*	59%	73%	*	-	-	*	30%	*	64%	50%	54%	25%
	2024	70%	69%	64%	*	59%	79%	*	-	-	*	17%	*	63%	68%	58%	29%
At Meets Grade Level or Above	2025	49%	48%	44%	*	39%	60%	*	-	-	*	12%	*	46%	37%	28%	13%
	2024	52%	50%	45%	*	39%	64%	*	-	-	*	5%	*	43%	50%	36%	6%
At Masters Grade Level	2025	15%	13%	11%	*	9%	18%	*	-	-	*	0%	*	11%	8%	6%	13%
	2024	16%	14%	9%	*	5%	18%	*	-	-	*	0%	*	9%	8%	7%	0%
End of Course English II																	
At Approaches Grade Level or Above	2025	72%	72%	59%	*	55%	70%	*	-	-	*	16%	*	58%	61%	51%	26%
	2024	75%	76%	69%	*	67%	76%	-	-	-	*	38%	60%	71%	64%	67%	43%
At Meets Grade Level or Above	2025	55%	54%	42%	*	38%	55%	*	-	-	*	5%	*	41%	45%	32%	21%
	2024	58%	58%	42%	*	35%	56%	-	-	-	*	14%	40%	44%	36%	36%	10%

Texas Education Agency
2024-25 STAAR Performance (TAPR)
DEVINE ISD (163901) - MEDINA COUNTY

	School Year	State	Region 20	District	African American	Hispanic	White	American Indian	Asian	Pacific Islander	Two or More Races	Special Ed (Current)	Special Ed (Former)	Continuously Enrolled	Non-Continuously Enrolled	Econ Disadv	EB / EL (Current & Monitored)
At Masters Grade Level	2025	8%	8%	2%	*	1%	4%	*	-	-	*	0%	*	2%	2%	3%	0%
	2024	9%	7%	2%	*	2%	4%	-	-	-	*	0%	0%	3%	0%	1%	0%
End of Course Algebra I																	
At Approaches Grade Level or Above	2025	78%	77%	85%	*	82%	93%	*	-	-	*	68%	*	84%	85%	81%	80%
	2024	81%	80%	83%	*	79%	91%	*	-	-	*	77%	*	84%	80%	80%	69%
At Meets Grade Level or Above	2025	45%	40%	49%	*	45%	63%	*	-	-	*	26%	*	52%	41%	41%	20%
	2024	43%	38%	44%	*	39%	56%	*	-	-	*	8%	*	46%	39%	32%	25%
At Masters Grade Level	2025	27%	22%	29%	*	24%	43%	*	-	-	*	0%	*	32%	18%	20%	0%
	2024	24%	19%	22%	*	19%	31%	*	-	-	*	3%	*	24%	17%	12%	13%
End of Course Biology																	
At Approaches Grade Level or Above	2025	92%	92%	92%	*	91%	97%	*	-	-	*	83%	*	93%	91%	91%	70%
	2024	91%	92%	92%	-	90%	98%	*	-	-	*	79%	*	91%	96%	90%	71%
At Meets Grade Level or Above	2025	61%	62%	60%	*	52%	84%	*	-	-	*	38%	*	62%	54%	48%	13 30%
	2024	56%	57%	53%	-	45%	75%	*	-	-	*	21%	*	54%	52%	41%	7%
At Masters Grade Level	2025	21%	20%	16%	*	11%	30%	*	-	-	*	8%	*	19%	6%	8%	20%
	2024	19%	19%	18%	-	13%	31%	*	-	-	*	6%	*	16%	21%	13%	0%
End of Course U.S. History																	
At Approaches Grade Level or Above	2025	95%	95%	94%	*	93%	93%	*	-	-	*	81%	*	94%	92%	89%	29%
	2024	96%	96%	97%	*	95%	100%	-	-	*	*	86%	*	97%	96%	95%	91%
At Meets Grade Level or Above	2025	68%	68%	70%	*	65%	83%	*	-	-	*	43%	*	71%	65%	57%	0%
	2024	69%	70%	73%	*	69%	80%	-	-	*	*	64%	*	77%	52%	74%	64%
At Masters Grade Level	2025	37%	37%	33%	*	23%	52%	*	-	-	*	14%	*	35%	23%	20%	0%
	2024	37%	38%	34%	*	23%	54%	-	-	*	*	14%	*	36%	22%	27%	9%
SAT/ACT All Subjects																	
At Approaches Grade Level or Above	2025	89%	84%	86%	-	*	89%	-	-	*	*	*	-	100%	*	*	*
	2024	88%	78%	*	-	*	-	-	-	-	-	-	-	-	*	*	-
At Meets Grade Level or Above	2025	59%	49%	36%	-	*	44%	-	-	*	*	*	-	40%	*	*	*
	2024	59%	46%	*	-	*	-	-	-	-	-	-	-	-	*	*	-

Texas Education Agency
2024-25 STAAR Performance (TAPR)
 DEVINE ISD (163901) - MEDINA COUNTY

	School Year	State	Region 20	District	African American	Hispanic	White	American Indian	Asian	Pacific Islander	Two or More Races	Special Ed (Current)	Special Ed (Former)	Continuously Enrolled	Non-Continuously Enrolled	Econ Disadv	EB / EL (Current & Monitored)
At Masters Grade Level	2025	13%	6%	0%	-	*	0%	-	-	*	*	*	-	0%	*	*	*
	2024	12%	5%	*	-	*	-	-	-	-	-	-	-	-	*	*	-
All Grades All Subjects																	
At Approaches Grade Level or Above	2025	75%	74%	69%	33%	65%	78%	63%	56%	100%	92%	36%	75%	69%	70%	60%	53%
	2024	75%	73%	72%	62%	68%	81%	86%	88%	100%	85%	47%	73%	71%	74%	73%	60%
At Meets Grade Level or Above	2025	50%	47%	40%	6%	35%	52%	13%	11%	86%	61%	13%	38%	40%	41%	27%	22%
	2024	48%	46%	42%	23%	36%	54%	29%	38%	100%	74%	17%	39%	42%	43%	40%	24%
At Masters Grade Level	2025	21%	19%	14%	0%	11%	22%	0%	0%	29%	28%	2%	11%	13%	17%	8%	7%
	2024	20%	18%	13%	8%	10%	20%	0%	13%	60%	31%	4%	15%	13%	15%	12%	8%
All Grades ELA/Reading																	
At Approaches Grade Level or Above	2025	76%	75%	70%	43%	66%	79%	*	*	*	93%	33%	84%	70%	71%	62%	51%
	2024	76%	75%	74%	73%	69%	82%	*	*	*	88%	43%	76%	73%	75%	68%	53%
At Meets Grade Level or Above	2025	54%	53%	42%	14%	37%	56%	*	*	*	57%	12%	47%	42%	45%	30%	14 20%
	2024	54%	52%	45%	27%	38%	58%	*	*	*	75%	16%	35%	44%	46%	40%	22%
At Masters Grade Level	2025	23%	20%	14%	0%	10%	22%	*	*	*	29%	2%	9%	12%	19%	8%	10%
	2024	22%	20%	13%	9%	9%	20%	*	*	*	31%	3%	15%	12%	15%	10%	7%
All Grades Mathematics																	
At Approaches Grade Level or Above	2025	72%	70%	63%	29%	59%	73%	*	*	*	90%	33%	63%	63%	65%	55%	59%
	2024	72%	70%	69%	78%	63%	79%	*	*	*	77%	48%	62%	68%	71%	72%	65%
At Meets Grade Level or Above	2025	45%	41%	33%	0%	28%	43%	*	*	*	50%	10%	32%	33%	33%	21%	26%
	2024	43%	39%	38%	33%	32%	50%	*	*	*	69%	16%	38%	38%	40%	33%	25%
At Masters Grade Level	2025	20%	17%	12%	0%	10%	17%	*	*	*	20%	1%	10%	11%	17%	7%	3%
	2024	17%	14%	12%	11%	10%	16%	*	*	*	23%	3%	10%	12%	13%	9%	6%
All Grades Science																	
At Approaches Grade Level or Above	2025	78%	77%	73%	*	71%	79%	*	*	*	100%	42%	82%	73%	75%	65%	52%
	2024	75%	73%	70%	*	66%	80%	*	*	-	80%	49%	83%	68%	75%	80%	63%
At Meets Grade Level or Above	2025	47%	46%	41%	*	35%	55%	*	*	*	80%	16%	27%	40%	44%	29%	20%
	2024	43%	42%	37%	*	34%	46%	*	*	-	60%	15%	50%	35%	43%	38%	11%

Texas Education Agency
2024-25 STAAR Performance (TAPR)
 DEVINE ISD (163901) - MEDINA COUNTY

	School Year	State	Region 20	District	African American	Hispanic	White	American Indian	Asian	Pacific Islander	Two or More Races	Special Ed (Current)	Special Ed (Former)	Continuously Enrolled	Non-Continuously Enrolled	Econ Disadv	EB / EL (Current & Monitored)
At Masters Grade Level	2025	17%	16%	12%	*	9%	19%	*	*	*	20%	3%	9%	11%	13%	5%	8%
	2024	16%	15%	11%	*	9%	17%	*	*	-	20%	4%	17%	10%	16%	11%	7%
All Grades Social Studies																	
At Approaches Grade Level or Above	2025	77%	77%	81%	*	78%	87%	*	-	*	86%	57%	70%	83%	74%	70%	33%
	2024	78%	79%	80%	*	78%	84%	*	-	*	100%	58%	100%	82%	73%	86%	75%
At Meets Grade Level or Above	2025	50%	50%	54%	*	49%	65%	*	-	*	71%	29%	40%	55%	50%	40%	8%
	2024	51%	52%	53%	*	48%	61%	*	-	*	100%	39%	50%	55%	41%	63%	56%
At Masters Grade Level	2025	27%	27%	26%	*	19%	39%	*	-	*	43%	9%	30%	27%	20%	14%	8%
	2024	27%	28%	25%	*	18%	37%	*	-	*	60%	13%	33%	26%	18%	25%	19%
STAAR Performance Rates by Enrolled Grade at Meets Grade Level or Above																	
3rd Graders																	
Reading and Mathematics	2025	39%	37%	16%	*	14%	21%	-	-	-	-	10%	40%	16%	17%	7%	14%
	2024	35%	33%	19%	-	14%	27%	-	*	*	*	13%	20%	16%	31%	14%	8%
Reading and Mathematics Including EOC	2025	39%	37%	16%	*	14%	21%	-	-	-	-	10%	40%	16%	17%	7%	15 14%
	2024	35%	33%	19%	-	14%	27%	-	*	*	*	13%	20%	16%	31%	14%	8%
Reading Including EOC	2025	52%	50%	38%	*	34%	48%	-	-	-	-	19%	60%	39%	34%	25%	14%
	2024	48%	46%	39%	-	33%	51%	-	*	*	*	25%	40%	37%	48%	38%	25%
Math Including EOC	2025	46%	44%	17%	*	15%	24%	-	-	-	-	12%	40%	17%	17%	7%	14%
	2024	42%	39%	23%	-	19%	31%	-	*	*	*	18%	20%	20%	34%	20%	15%
4th Graders																	
Reading and Mathematics	2025	40%	37%	14%	-	9%	26%	*	*	*	*	9%	13%	14%	16%	11%	14%
	2024	38%	34%	27%	-	22%	39%	-	-	-	-	6%	*	29%	22%	25%	11%
Reading and Mathematics Including EOC	2025	40%	37%	14%	-	9%	26%	*	*	*	*	9%	13%	14%	16%	11%	14%
	2024	38%	34%	27%	-	22%	39%	-	-	-	-	6%	*	29%	22%	25%	11%
Reading Including EOC	2025	54%	52%	34%	-	27%	53%	*	*	*	*	26%	50%	35%	34%	24%	21%
	2024	51%	48%	45%	-	40%	59%	-	-	-	-	16%	*	47%	39%	40%	22%
Math Including EOC	2025	47%	44%	19%	-	14%	28%	*	*	*	*	9%	13%	18%	21%	15%	14%
	2024	46%	41%	30%	-	25%	44%	-	-	-	-	10%	*	32%	25%	25%	11%
5th Graders																	
Reading and Mathematics	2025	42%	39%	24%	-	19%	37%	-	*	-	-	6%	*	21%	34%	13%	20%
	2024	42%	39%	33%	*	26%	45%	-	*	-	*	10%	*	30%	41%	39%	38%

Texas Education Agency
2024-25 STAAR Performance (TAPR)
 DEVINE ISD (163901) - MEDINA COUNTY

	School Year	State	Region 20	District	African American	Hispanic	White	American Indian	Asian	Pacific Islander	Two or More Races	Special Ed (Current)	Special Ed (Former)	Continuously Enrolled	Non-Continuously Enrolled	Econ Disadv	EB / EL (Current & Monitored)
Reading and Mathematics Including EOC	2025	42%	39%	24%	-	19%	37%	-	*	-	-	6%	*	21%	34%	13%	20%
	2024	42%	39%	33%	*	26%	45%	-	*	-	*	10%	*	30%	41%	39%	38%
Reading Including EOC	2025	58%	56%	39%	-	34%	54%	-	*	-	-	13%	*	35%	53%	27%	20%
	2024	55%	53%	41%	*	38%	48%	-	*	-	*	14%	*	38%	52%	50%	50%
Math Including EOC	2025	48%	45%	28%	-	24%	39%	-	*	-	-	10%	*	24%	41%	16%	30%
	2024	51%	47%	54%	*	42%	71%	-	*	-	*	34%	*	53%	56%	53%	63%
6th Graders																	
Reading and Mathematics	2025	37%	33%	21%	*	19%	29%	-	*	-	*	0%	29%	18%	31%	13%	9%
	2024	36%	33%	31%	-	23%	43%	-	-	-	*	16%	25%	29%	37%	26%	20%
Reading and Mathematics Including EOC	2025	37%	33%	21%	*	19%	29%	-	*	-	*	0%	29%	18%	31%	13%	9%
	2024	36%	34%	31%	-	23%	43%	-	-	-	*	16%	25%	29%	37%	26%	20%
Reading Including EOC	2025	56%	54%	43%	*	37%	55%	-	*	-	*	8%	43%	38%	62%	37%	18%
	2024	57%	55%	48%	-	35%	67%	-	-	-	*	23%	38%	46%	55%	48%	16 40%
Math Including EOC	2025	41%	36%	30%	*	26%	40%	-	*	-	*	0%	43%	28%	38%	19%	36%
	2024	40%	37%	35%	-	28%	44%	-	-	-	*	16%	50%	32%	45%	35%	40%
7th Graders																	
Reading and Mathematics	2025	36%	33%	34%	-	26%	46%	-	-	-	*	4%	22%	34%	34%	16%	36%
	2024	35%	31%	36%	*	26%	53%	-	-	*	*	5%	17%	36%	38%	23%	*
Reading and Mathematics Including EOC	2025	38%	34%	34%	-	26%	46%	-	-	-	*	4%	22%	34%	34%	16%	36%
	2024	36%	32%	36%	*	26%	53%	-	-	*	*	5%	17%	36%	38%	23%	*
Reading Including EOC	2025	54%	52%	45%	-	36%	56%	-	-	-	*	7%	44%	44%	46%	29%	36%
	2024	54%	52%	52%	*	43%	63%	-	-	*	*	15%	33%	50%	58%	46%	*
Math Including EOC	2025	43%	39%	42%	-	34%	53%	-	-	-	*	11%	44%	44%	37%	27%	45%
	2024	40%	36%	41%	*	32%	55%	-	-	*	*	5%	33%	41%	38%	35%	*
8th Graders																	
Reading and Mathematics	2025	30%	27%	40%	*	36%	56%	-	-	*	*	0%	50%	39%	45%	25%	20%
	2024	28%	25%	24%	*	24%	26%	*	-	-	-	6%	*	24%	25%	37%	*
Reading and Mathematics Including EOC	2025	44%	40%	48%	*	42%	64%	-	-	*	*	0%	50%	48%	50%	31%	20%
	2024	41%	37%	36%	*	34%	40%	*	-	-	*	12%	*	36%	36%	52%	40%
Reading Including EOC	2025	59%	57%	57%	*	51%	72%	-	-	*	*	0%	50%	56%	58%	44%	20%
	2024	57%	54%	46%	*	43%	52%	*	-	-	*	18%	*	49%	36%	52%	40%

Texas Education Agency
2024-25 STAAR Performance (TAPR)
 DEVINE ISD (163901) - MEDINA COUNTY

	School Year	State	Region 20	District	African American	Hispanic	White	American Indian	Asian	Pacific Islander	Two or More Races	Special Ed (Current)	Special Ed (Former)	Continuously Enrolled	Non-Continuously Enrolled	Econ Disadv	EB/EL (Current & Monitored)
Math Including EOC	2025	51%	46%	56%	*	49%	69%	-	-	*	*	0%	50%	57%	50%	40%	20%
	2024	49%	44%	52%	*	47%	60%	*	-	-	*	24%	*	52%	50%	60%	40%
3rd - 8th Graders																	
Reading and Mathematics	2025	38%	35%	24%	0%	20%	35%	*	*	*	38%	6%	26%	23%	29%	13%	19%
	2024	36%	33%	28%	29%	22%	39%	*	*	*	56%	10%	22%	27%	32%	26%	15%
Reading and Mathematics Including EOC	2025	40%	37%	26%	0%	21%	37%	*	*	*	44%	6%	26%	25%	30%	14%	19%
	2024	38%	35%	30%	29%	24%	41%	*	*	*	64%	10%	25%	29%	34%	29%	19%
Reading Including EOC	2025	55%	53%	42%	20%	36%	56%	*	*	*	67%	14%	49%	41%	47%	30%	22%
	2024	54%	51%	45%	43%	39%	57%	*	*	*	82%	19%	36%	44%	48%	45%	33%
Math Including EOC	2025	46%	42%	31%	0%	26%	42%	*	*	*	56%	8%	33%	31%	33%	19%	28%
	2024	45%	41%	39%	43%	32%	50%	*	*	*	73%	18%	39%	38%	41%	37%	29%

* Indicates results are masked due to small numbers to protect student confidentiality.

- Indicates there are no students in the group.

Texas Education Agency
2024-25 STAAR Progress (TAPR)
 DEVINE ISD (163901) - MEDINA COUNTY

	School Year	State	Region 20	District	African American	Hispanic	White	American Indian	Asian	Pacific Islander	Two or More Races	Special Ed (Current)	Special Ed (Former)	Continuously Enrolled	Non-Continuously Enrolled	Econ Disadv	EB/EL (Current & Monitored)	G/T	
School Progress - Annual Growth by Grade and Subject																			
Grade 4 ELA/Reading	2025	70%	69%	57%	-	52%	69%	*	*	*	*	59%	50%	57%	55%	51%	46%	100%	
	2024	67%	65%	62%	-	58%	70%	-	-	-	-	72%	*	65%	52%	71%	50%	---	
Grade 4 Mathematics	2025	65%	62%	39%	-	41%	36%	*	*	*	*	36%	25%	38%	40%	40%	61%	78%	
	2024	60%	55%	46%	-	44%	50%	-	-	-	-	28%	*	46%	47%	52%	44%	---	
Grade 5 ELA/Reading	2025	69%	68%	49%	-	46%	58%	-	-	-	-	23%	*	45%	65%	40%	35%	91%	
	2024	70%	69%	54%	*	53%	50%	-	*	-	*	41%	*	51%	65%	68%	56%	---	
Grade 5 Mathematics	2025	67%	68%	54%	-	48%	68%	-	-	-	-	42%	*	51%	62%	45%	55%	82%	
	2024	65%	65%	75%	*	69%	83%	-	*	-	*	76%	*	74%	79%	89%	75%	---	
Grade 6 ELA/Reading	2025	64%	62%	55%	*	53%	60%	-	*	-	*	31%	36%	54%	59%	50%	50%	60%	
	2024	61%	59%	64%	-	60%	72%	-	-	-	*	52%	63%	63%	67%	65%	50%	---	
Grade 6 Mathematics	2025	56%	53%	47%	*	51%	45%	-	*	-	*	31%	43%	45%	54%	42%	55%	50%	
	2024	48%	45%	44%	-	36%	55%	-	-	-	*	26%	56%	41%	50%	41%	65%	---	
Grade 7 ELA/Reading	2025	64%	62%	62%	-	59%	67%	-	-	-	*	38%	61%	59%	74%	51%	70%	94%	
	2024	66%	65%	71%	*	69%	74%	-	-	*	*	26%	83%	72%	68%	73%	*	---	
Grade 7 Mathematics	2025	50%	46%	50%	-	51%	49%	-	-	-	-	31%	63%	51%	48%	46%	50%	*	
	2024	49%	48%	47%	*	44%	52%	-	-	*	*	29%	42%	46%	50%	36%	*	---	
Grade 8 ELA/Reading	2025	72%	71%	71%	-	69%	77%	-	-	*	*	46%	83%	70%	71%	64%	20%	100%	
	2024	69%	68%	63%	*	64%	63%	*	-	-	*	53%	*	65%	56%	60%	60%	---	
Grade 8 Mathematics	2025	68%	64%	77%	-	76%	81%	-	-	*	*	46%	79%	77%	79%	73%	50%	83%	
	2024	66%	61%	71%	*	74%	65%	*	-	-	*	53%	*	72%	64%	82%	*	---	
End of Course English I	2025	63%	63%	67%	*	66%	73%	*	-	-	*	40%	*	68%	63%	62%	71%	89%	
	2024	64%	64%	55%	-	52%	63%	-	-	-	*	23%	*	57%	47%	45%	19%	---	
End of Course English II	2025	65%	66%	59%	-	58%	57%	*	-	-	*	55%	*	59%	59%	59%	55%	*	
	2024	69%	71%	60%	*	57%	70%	-	-	-	*	38%	*	61%	56%	56%	33%	---	
End of Course Algebra I	2025	74%	72%	82%	*	82%	84%	*	-	-	*	71%	-	82%	83%	81%	100%	83%	
	2024	72%	71%	81%	-	79%	82%	-	-	-	*	81%	*	81%	80%	76%	90%	---	
All Grades Both Subjects	2025	65%	64%	59%	38%	57%	63%	50%	17%	*	53%	41%	56%	58%	62%	53%	55%	83%	
	2024	64%	62%	61%	47%	59%	66%	*	*	*	73%	47%	63%	61%	60%	61%	55%	---	
All Grades ELA/Reading	2025	67%	66%	60%	*	57%	65%	*	*	*	55%	41%	58%	59%	64%	53%	51%	89%	
	2024	67%	66%	61%	44%	59%	66%	*	*	*	63%	45%	66%	62%	58%	57%	45%	---	
All Grades Mathematics	2025	64%	62%	58%	*	58%	60%	*	*	*	50%	40%	53%	58%	59%	53%	59%	75%	
	2024	60%	58%	61%	50%	58%	65%	*	*	*	86%	49%	60%	61%	62%	67%	67%	---	
School Progress - Accelerated Learning by Grade and Subject																			
Grade 4 ELA/Reading	2025	40%	40%	34%	-	33%	38%	-	-	-	-	21%	*	34%	33%	28%	25%	-	
	2024	38%	38%	64%	-	60%	80%	-	-	-	-	77%	-	64%	*	*	*	---	
Grade 4 Mathematics	2025	27%	25%	14%	-	18%	0%	*	-	-	*	0%	*	18%	0%	14%	22%	-	
	2024	26%	23%	21%	-	21%	22%	-	-	-	-	13%	*	20%	25%	60%	*	---	

Texas Education Agency
2024-25 STAAR Progress (TAPR)
 DEVINE ISD (163901) - MEDINA COUNTY

	School Year	State	Region 20	District	African American	Hispanic	White	American Indian	Asian	Pacific Islander	Two or More Races	Special Ed (Current)	Special Ed (Former)	Continuously Enrolled	Non-Continuously Enrolled	Econ Disadv	EB/EL (Current & Monitored)	G/T
Grade 5 ELA/Reading	2025	25%	25%	12%	-	13%	*	-	-	-	-	13%	-	6%	*	13%	*	-
	2024	35%	35%	10%	*	6%	*	-	-	-	-	10%	*	6%	*	0%	*	---
Grade 5 Mathematics	2025	35%	36%	15%	-	13%	23%	-	-	-	-	5%	*	12%	33%	14%	*	-
	2024	41%	40%	53%	-	43%	78%	-	-	-	*	35%	*	52%	57%	71%	*	---
Grade 6 ELA/Reading	2025	27%	27%	28%	-	31%	17%	-	-	-	-	0%	-	26%	40%	27%	*	-
	2024	24%	23%	38%	-	35%	50%	-	-	-	-	27%	-	46%	20%	*	*	---
Grade 6 Mathematics	2025	33%	33%	29%	-	32%	*	-	-	-	-	23%	-	32%	*	28%	*	-
	2024	27%	26%	32%	-	19%	56%	-	-	-	-	0%	*	37%	17%	*	*	---
Grade 7 ELA/Reading	2025	25%	25%	41%	-	44%	33%	-	-	-	-	25%	*	42%	38%	43%	*	-
	2024	23%	23%	21%	-	27%	0%	-	-	-	-	0%	*	22%	20%	*	*	---
Grade 7 Mathematics	2025	16%	17%	24%	-	23%	27%	-	-	-	-	13%	*	21%	33%	29%	*	-
	2024	14%	13%	17%	-	19%	14%	-	-	-	-	9%	-	16%	*	*	*	---
Grade 8 ELA/Reading	2025	40%	39%	21%	-	19%	29%	-	-	-	-	25%	*	24%	14%	6%	*	-
	2024	34%	34%	34%	*	33%	43%	-	-	-	-	38%	-	32%	43%	50%	*	---
Grade 8 Mathematics	2025	42%	37%	49%	-	47%	50%	-	-	-	*	36%	*	50%	44%	52%	*	-
	2024	44%	39%	48%	*	56%	14%	-	-	-	-	40%	-	52%	33%	38%	*	---
End of Course English I	2025	23%	24%	10%	*	4%	40%	-	-	-	-	0%	-	10%	11%	5%	*	-19
	2024	20%	20%	19%	-	21%	*	-	-	-	-	9%	*	22%	*	14%	*	---
End of Course English II	2025	29%	29%	28%	-	30%	*	*	-	-	*	11%	*	28%	*	32%	20%	-
	2024	29%	33%	30%	*	30%	33%	-	-	-	-	0%	-	26%	*	35%	0%	---
End of Course Algebra I	2025	54%	55%	67%	*	75%	*	-	-	-	-	60%	-	68%	60%	65%	*	-
	2024	55%	56%	76%	-	74%	83%	-	-	-	-	80%	*	81%	57%	76%	*	---
All Grades Both Subjects	2025	33%	33%	28%	*	28%	25%	*	-	-	*	15%	29%	27%	28%	27%	26%	-
	2024	32%	32%	37%	*	36%	40%	-	-	-	*	28%	33%	38%	34%	41%	30%	---
All Grades ELA/Reading	2025	31%	31%	27%	*	27%	27%	*	-	-	*	15%	50%	27%	29%	25%	25%	-
	2024	30%	30%	32%	*	31%	35%	-	-	-	-	24%	*	32%	31%	25%	11%	---
All Grades Mathematics	2025	35%	34%	28%	*	29%	23%	*	-	-	*	15%	11%	28%	27%	28%	27%	-
	2024	35%	34%	42%	*	41%	45%	-	-	-	*	32%	33%	43%	37%	58%	53%	---

* Indicates results are masked due to small numbers to protect student confidentiality.
 - Indicates there are no students in the group.
 --- First reported in 2025.

Texas Education Agency
2024-25 Bilingual Education/English as a Second Language (Current EB Students/EL) (TAPR)
 DEVINE ISD (163901) - MEDINA COUNTY

	School Year	State	Region 20	District	Total Bilingual Education	BE-Trans Early Exit	BE-Trans Late Exit	BE-Dual Two-Way	BE-Dual One-Way	ALP Bilingual (Exception)	Total ESL	ESL Content-Based	ESL Pull-Out	ALP ESL (Waiver)	EB/EL with Parental Denial	Never EB/EL	Total EB/EL (Current)	Monitored & Former EB/EL	
STAAR Performance Rate by Subject and Performance Level																			
All Grades All Subjects																			
At Approaches Grade Level or Above	2025	75%	74%	69%	-	-	-	-	-	-	46%	45%	42%	71%	56%	70%	46%	93%	
	2024	75%	73%	72%	-	-	-	-	-	-	55%	60%	51%	67%	59%	73%	55%	93%	
At Meets Grade Level or Above	2025	50%	47%	40%	-	-	-	-	-	-	13%	13%	12%	18%	0%	41%	12%	76%	
	2024	48%	46%	42%	-	-	-	-	-	-	17%	23%	14%	17%	19%	43%	16%	83%	
At Masters Grade Level	2025	21%	19%	14%	-	-	-	-	-	-	1%	2%	0%	0%	0%	14%	1%	44%	
	2024	20%	18%	13%	-	-	-	-	-	-	1%	3%	0%	8%	3%	14%	1%	48%	
All Grades ELA/Reading																			
At Approaches Grade Level or Above	2025	76%	75%	70%	-	-	-	-	-	-	41%	50%	32%	63%	80%	71%	43%	100%	
	2024	76%	75%	74%	-	-	-	-	-	-	47%	63%	39%	43%	56%	75%	48%	20 100%	
At Meets Grade Level or Above	2025	54%	53%	42%	-	-	-	-	-	-	11%	13%	11%	0%	0%	44%	10%	88%	
	2024	54%	52%	45%	-	-	-	-	-	-	18%	32%	11%	14%	13%	46%	16%	80%	
At Masters Grade Level	2025	23%	20%	14%	-	-	-	-	-	-	1%	4%	0%	0%	0%	14%	1%	63%	
	2024	22%	20%	13%	-	-	-	-	-	-	3%	5%	0%	14%	0%	13%	1%	47%	
All Grades Mathematics																			
At Approaches Grade Level or Above	2025	72%	70%	63%	-	-	-	-	-	-	56%	46%	57%	88%	*	64%	55%	77%	
	2024	72%	70%	69%	-	-	-	-	-	-	60%	55%	60%	*	75%	69%	62%	89%	
At Meets Grade Level or Above	2025	45%	41%	33%	-	-	-	-	-	-	20%	17%	17%	38%	*	34%	19%	54%	
	2024	43%	39%	38%	-	-	-	-	-	-	15%	15%	12%	*	42%	39%	19%	89%	
At Masters Grade Level	2025	20%	17%	12%	-	-	-	-	-	-	0%	0%	0%	0%	*	13%	0%	15%	
	2024	17%	14%	12%	-	-	-	-	-	-	0%	0%	0%	*	8%	12%	2%	44%	
All Grades Science																			

Texas Education Agency
2024-25 Bilingual Education/English as a Second Language (Current EB Students/EL) (TAPR)
 DEVINE ISD (163901) - MEDINA COUNTY

	School Year	State	Region 20	District	Total Bilingual Education	BE-Trans Early Exit	BE-Trans Late Exit	BE-Dual Two-Way	BE-Dual One-Way	ALP Bilingual (Exception)	Total ESL	ESL Content-Based	ESL Pull-Out	ALP ESL (Waiver)	EB/EL with Parental Denial	Never EB/EL	Total EB/EL (Current)	Monitored & Former EB/EL
At Approaches Grade Level or Above	2025	78%	77%	73%	-	-	-	-	-	-	45%	25%	58%	-	*	74%	43%	100%
	2024	75%	73%	70%	-	-	-	-	-	-	71%	*	62%	*	38%	70%	58%	86%
At Meets Grade Level or Above	2025	47%	46%	41%	-	-	-	-	-	-	10%	0%	17%	-	*	42%	10%	83%
	2024	43%	42%	37%	-	-	-	-	-	-	6%	*	8%	*	0%	39%	4%	71%
At Masters Grade Level	2025	17%	16%	12%	-	-	-	-	-	-	0%	0%	0%	-	*	12%	0%	50%
	2024	16%	15%	11%	-	-	-	-	-	-	0%	*	0%	*	0%	11%	0%	43%
All Grades Social Studies																		
At Approaches Grade Level or Above	2025	77%	77%	81%	-	-	-	-	-	-	27%	-	30%	*	-	83%	27%	100%
	2024	78%	79%	80%	-	-	-	-	-	-	60%	-	60%	-	*	80%	64%	89%
At Meets Grade Level or Above	2025	50%	50%	54%	-	-	-	-	-	-	0%	-	0%	*	-	56%	0%	83%
	2024	51%	52%	53%	-	-	-	-	-	-	40%	-	40%	-	*	52%	36%	89%
At Masters Grade Level	2025	27%	27%	26%	-	-	-	-	-	-	0%	-	0%	*	-	26%	0%	50%
	2024	27%	28%	25%	-	-	-	-	-	-	0%	-	0%	-	*	25%	0%	56%
School Progress - Annual Growth																		
All Grades Both Subjects	2025	65%	64%	59%	-	-	-	-	-	-	51%	52%	51%	47%	36%	59%	49%	80%
	2024	64%	62%	61%	-	-	-	-	-	-	46%	43%	50%	25%	63%	61%	50%	84%
All Grades ELA/Reading	2025	67%	66%	60%	-	-	-	-	-	-	42%	38%	46%	38%	*	60%	42%	91%
	2024	67%	66%	61%	-	-	-	-	-	-	36%	36%	37%	30%	45%	62%	36%	88%
All Grades Mathematics	2025	64%	62%	58%	-	-	-	-	-	-	61%	65%	59%	56%	*	58%	59%	64%
	2024	60%	58%	61%	-	-	-	-	-	-	58%	50%	64%	*	83%	61%	66%	78%
School Progress - Accelerated Learning																		
All Grades Both Subjects	2025	33%	33%	28%	-	-	-	-	-	-	23%	25%	22%	*	*	28%	26%	*
	2024	32%	32%	37%	-	-	-	-	-	-	28%	*	25%	*	*	37%	30%	-

Texas Education Agency
2024-25 Bilingual Education/English as a Second Language (Current EB Students/EL) (TAPR)
 DEVINE ISD (163901) - MEDINA COUNTY

	School Year	State	Region 20	District	Total Bilingual Education	BE-Trans Early Exit	BE-Trans Late Exit	BE-Dual Two-Way	BE-Dual One-Way	ALP Bilingual (Exception)	Total ESL	ESL Content-Based	ESL Pull-Out	ALP ESL (Waiver)	EB/EL with Parental Denial	Never EB/EL	Total EB/EL (Current)	Monitored & Former EB/EL
All Grades ELA/Reading	2025	31%	31%	27%	-	-	-	-	-	-	22%	22%	20%	*	*	27%	25%	-
	2024	30%	30%	32%	-	-	-	-	-	-	7%	*	8%	*	*	34%	11%	-
All Grades Mathematics	2025	35%	34%	28%	-	-	-	-	-	-	25%	27%	25%	*	*	28%	27%	*
	2024	35%	34%	42%	-	-	-	-	-	-	50%	*	42%	-	*	41%	53%	-

* Indicates results are masked due to small numbers to protect student confidentiality.
 - Indicates there are no students in the group.
 Blank cell indicates there are no data available in the group.

Texas Education Agency
2024-25 STAAR Participation (TAPR)
 DEVINE ISD (163901) - MEDINA COUNTY

	State	Region 20	District	African American	Hispanic	White	American Indian	Asian	Pacific Islander	Two or More Races	Special Ed (Current)	Special Ed (Former)	Continuously Enrolled	Non-Continuously Enrolled	Econ Disadv	EB / EL (Current & Monitored)
2025 STAAR Participation (All Grades)																
All Tests																
Assessment Participant	99%	99%	100%	95%	100%	100%	100%	100%	100%	100%	100%	100%	100%	100%	100%	100%
Included in Accountability	93%	93%	96%	82%	95%	97%	100%	100%	100%	100%	95%	94%	98%	87%	96%	91%
Not Included in Accountability: Mobile	4%	4%	4%	14%	4%	3%	0%	0%	0%	0%	4%	6%	1%	12%	3%	4%
Not Included in Accountability: Other Exclusions	2%	2%	0%	0%	1%	0%	0%	0%	0%	0%	0%	0%	0%	1%	0%	5%
Not Tested	1%	1%	0%	5%	0%	0%	0%	0%	0%	0%	0%	0%	0%	0%	0%	0%
Absent	1%	1%	0%	5%	0%	0%	0%	0%	0%	0%	0%	0%	0%	0%	0%	0%
Other	0%	0%	0%	0%	0%	0%	0%	0%	0%	0%	0%	0%	0%	0%	0%	0%
Reading																
Assessment Participant	99%	99%	100%	89%	100%	100%	*	*	*	100%	99%	100%	100%	99%	100%	100%
Included in Accountability	91%	92%	95%	78%	95%	97%	*	*	*	100%	96%	92%	98%	86%	96%	87%
Not Included in Accountability: Mobile	4%	4%	4%	11%	4%	3%	*	*	*	0%	3%	8%	1%	12%	3%	5%
Not Included in Accountability: Other Exclusions	4%	3%	1%	0%	1%	0%	*	*	*	0%	0%	0%	1%	1%	1%	8%
Not Tested	1%	1%	0%	11%	0%	0%	*	*	*	0%	1%	0%	0%	1%	0%	0%
Absent	1%	1%	0%	11%	0%	0%	*	*	*	0%	1%	0%	0%	1%	0%	0%
Other	0%	0%	0%	0%	0%	0%	*	*	*	0%	0%	0%	0%	0%	0%	0%
Mathematics																
Assessment Participant	99%	99%	100%	100%	100%	100%	*	*	*	100%	100%	100%	100%	100%	100%	100%
Included in Accountability	94%	94%	96%	88%	95%	97%	*	*	*	100%	96%	93%	99%	87%	96%	96%
Not Included in Accountability: Mobile	4%	4%	4%	13%	4%	3%	*	*	*	0%	4%	7%	1%	13%	4%	3%
Not Included in Accountability: Other Exclusions	1%	1%	0%	0%	0%	0%	*	*	*	0%	0%	0%	0%	0%	0%	1%
Not Tested	1%	1%	0%	0%	0%	0%	*	*	*	0%	0%	0%	0%	0%	0%	0%
Absent	1%	1%	0%	0%	0%	0%	*	*	*	0%	0%	0%	0%	0%	0%	0%
Other	0%	0%	0%	0%	0%	0%	*	*	*	0%	0%	0%	0%	0%	0%	0%
Science																
Assessment Participant	99%	99%	100%	*	100%	99%	*	*	*	100%	100%	100%	100%	100%	100%	100%
Included in Accountability	94%	94%	97%	*	98%	97%	*	*	*	100%	96%	100%	99%	93%	97%	96%
Not Included in Accountability: Mobile	4%	4%	3%	*	2%	3%	*	*	*	0%	4%	0%	1%	7%	3%	4%
Not Included in Accountability: Other Exclusions	1%	1%	0%	*	0%	0%	*	*	*	0%	0%	0%	0%	0%	0%	0%
Not Tested	1%	1%	0%	*	0%	1%	*	*	*	0%	0%	0%	0%	0%	0%	0%

Texas Education Agency
2024-25 STAAR Participation (TAPR)
 DEVINE ISD (163901) - MEDINA COUNTY

	State	Region 20	District	African American	Hispanic	White	American Indian	Asian	Pacific Islander	Two or More Races	Special Ed (Current)	Special Ed (Former)	Continuously Enrolled	Non-Continuously Enrolled	Econ Disadv	EB / EL (Current & Monitored)
Absent	1%	1%	0%	*	0%	1%	*	*	*	0%	0%	0%	0%	0%	0%	0%
Other	0%	0%	0%	*	0%	0%	*	*	*	0%	0%	0%	0%	0%	0%	0%
Social Studies																
Assessment Participant	99%	99%	99%	*	99%	99%	*	-	*	100%	100%	100%	99%	100%	100%	100%
Included in Accountability	94%	95%	94%	*	93%	95%	*	-	*	100%	85%	100%	98%	81%	95%	86%
Not Included in Accountability: Mobile	4%	4%	5%	*	6%	3%	*	-	*	0%	15%	0%	1%	18%	5%	7%
Not Included in Accountability: Other Exclusions	1%	1%	0%	*	1%	0%	*	-	*	0%	0%	0%	0%	2%	0%	7%
Not Tested	1%	1%	1%	*	1%	1%	*	-	*	0%	0%	0%	1%	0%	0%	0%
Absent	1%	1%	1%	*	1%	1%	*	-	*	0%	0%	0%	1%	0%	0%	0%
Other	0%	0%	0%	*	0%	0%	*	-	*	0%	0%	0%	0%	0%	0%	0%
Accelerated Testers																
SAT/ACT Participant	94%	94%	100%	-	*	100%	-	-	*	*	*	-	100%	*	*	*
2024 STAAR Participation (All Grades)																24
All Tests																
Assessment Participant	99%	99%	100%	100%	100%	100%	100%	100%	100%	100%	99%	100%	100%	99%	99%	100%
Included in Accountability	92%	93%	95%	100%	94%	96%	100%	100%	100%	100%	96%	87%	97%	87%	90%	81%
Not Included in Accountability: Mobile	4%	5%	5%	0%	5%	4%	0%	0%	0%	0%	2%	13%	2%	12%	8%	14%
Not Included in Accountability: Other Exclusions	2%	2%	0%	0%	1%	0%	0%	0%	0%	0%	1%	0%	0%	1%	1%	5%
Not Tested	1%	1%	0%	0%	0%	0%	0%	0%	0%	0%	1%	0%	0%	1%	1%	0%
Absent	1%	1%	0%	0%	0%	0%	0%	0%	0%	0%	0%	0%	0%	1%	1%	0%
Other	0%	0%	0%	0%	0%	0%	0%	0%	0%	0%	0%	0%	0%	0%	0%	0%
Reading																
Assessment Participant	99%	99%	100%	100%	100%	100%	*	*	*	100%	100%	100%	100%	100%	100%	100%
Included in Accountability	91%	92%	95%	100%	94%	96%	*	*	*	100%	96%	87%	97%	87%	89%	80%
Not Included in Accountability: Mobile	4%	5%	5%	0%	5%	4%	*	*	*	0%	2%	13%	2%	12%	8%	12%
Not Included in Accountability: Other Exclusions	4%	3%	1%	0%	1%	0%	*	*	*	0%	2%	0%	1%	1%	2%	8%
Not Tested	1%	1%	0%	0%	0%	0%	*	*	*	0%	0%	0%	0%	0%	0%	0%
Absent	1%	1%	0%	0%	0%	0%	*	*	*	0%	0%	0%	0%	0%	0%	0%
Other	0%	0%	0%	0%	0%	0%	*	*	*	0%	0%	0%	0%	0%	0%	0%
Mathematics																
Assessment Participant	99%	99%	99%	100%	99%	99%	*	*	*	100%	99%	100%	99%	99%	99%	100%
Included in Accountability	93%	93%	95%	100%	94%	96%	*	*	*	100%	97%	85%	97%	88%	89%	84%

Texas Education Agency
2024-25 STAAR Participation (TAPR)
 DEVINE ISD (163901) - MEDINA COUNTY

	State	Region 20	District	African American	Hispanic	White	American Indian	Asian	Pacific Islander	Two or More Races	Special Ed (Current)	Special Ed (Former)	Continuously Enrolled	Non-Continuously Enrolled	Econ Disadv	EB / EL (Current & Monitored)
Not Included in Accountability: Mobile	5%	5%	4%	0%	5%	4%	*	*	*	0%	2%	15%	2%	11%	9%	15%
Not Included in Accountability: Other Exclusions	1%	1%	0%	0%	0%	0%	*	*	*	0%	0%	0%	0%	0%	0%	1%
Not Tested	1%	1%	1%	0%	1%	1%	*	*	*	0%	1%	0%	1%	1%	1%	0%
Absent	1%	1%	0%	0%	1%	0%	*	*	*	0%	1%	0%	0%	1%	1%	0%
Other	0%	0%	0%	0%	0%	1%	*	*	*	0%	1%	0%	0%	0%	0%	0%
Science																
Assessment Participant	99%	99%	99%	*	99%	99%	*	*	-	100%	98%	100%	100%	97%	98%	100%
Included in Accountability	93%	93%	94%	*	93%	94%	*	*	-	100%	95%	86%	97%	84%	89%	79%
Not Included in Accountability: Mobile	4%	5%	5%	*	6%	5%	*	*	-	0%	2%	14%	3%	13%	9%	21%
Not Included in Accountability: Other Exclusions	1%	1%	0%	*	0%	0%	*	*	-	0%	0%	0%	0%	0%	0%	0%
Not Tested	1%	1%	1%	*	1%	1%	*	*	-	0%	2%	0%	0%	3%	2%	0%
Absent	1%	1%	1%	*	1%	1%	*	*	-	0%	1%	0%	0%	2%	1%	0%
Other	0%	0%	0%	*	0%	0%	*	*	-	0%	1%	0%	0%	1%	1%	0%
Social Studies																
Assessment Participant	99%	99%	100%	*	100%	100%	*	-	*	100%	100%	100%	100%	100%	100%	100%
Included in Accountability	94%	94%	95%	*	95%	95%	*	-	*	100%	97%	100%	98%	86%	94%	84%
Not Included in Accountability: Mobile	4%	4%	4%	*	4%	5%	*	-	*	0%	3%	0%	2%	12%	5%	11%
Not Included in Accountability: Other Exclusions	1%	1%	0%	*	1%	0%	*	-	*	0%	0%	0%	0%	2%	1%	5%
Not Tested	1%	1%	0%	*	0%	0%	*	-	*	0%	0%	0%	0%	0%	0%	0%
Absent	1%	1%	0%	*	0%	0%	*	-	*	0%	0%	0%	0%	0%	0%	0%
Other	0%	0%	0%	*	0%	0%	*	-	*	0%	0%	0%	0%	0%	0%	0%
Accelerated Testers																
SAT/ACT Participant	93%	93%	*	-	*	*	-	-	-	-	-	-	*	*	*	-

* Indicates results are masked due to small numbers to protect student confidentiality.
 - Indicates there are no students in the group.

Texas Education Agency
2024-25 Attendance, Graduation, and Dropout Rates (TAPR)
 DEVINE ISD (163901) - MEDINA COUNTY

	State	Region 20	District	African American	Hispanic	White	American Indian	Asian	Pacific Islander	Two or More Races	Special Ed	Econ Disadv	EB/EL
Attendance Rate													
2023-24	93.6%	92.6%	93.6%	92.2%	93.4%	94.0%	*	*	*	95.1%	93.3%	93.0%	92.4%
2022-23	93.3%	92.3%	93.6%	90.2%	93.3%	94.2%	*	*	*	95.2%	93.0%	92.8%	93.3%
Chronic Absenteeism													
2023-24	19.0%	23.5%	19.3%	35.3%	19.8%	17.8%	*	*	*	20.0%	19.0%	23.2%	20.5%
2022-23	20.3%	24.9%	19.7%	53.3%	20.5%	17.5%	*	20.0%	*	8.3%	19.6%	24.3%	19.6%
Annual Dropout Rate (Gr 7-8)													
2023-24	0.7%	0.7%	0.0%	0.0%	0.0%	0.0%	*	-	*	0.0%	0.0%	0.0%	0.0%
2022-23	0.8%	0.8%	0.3%	*	0.5%	0.0%	*	*	-	*	2.0%	0.0%	0.0%
Annual Dropout Rate (Gr 9-12)													
2023-24	1.9%	2.4%	1.4%	0.0%	1.6%	1.0%	*	-	*	0.0%	2.4%	1.8%	0.0%
2022-23	2.0%	2.7%	1.1%	0.0%	0.7%	2.1%	-	-	*	0.0%	0.0%	1.0%	0.0%
4-Year Longitudinal Rate (Gr 9-12)													
Class of 2024													
Graduated	90.7%	88.1%	94.0%	*	94.1%	93.3%	-	-	-	*	94.4%	97.0%	87.5%
Received TxCHSE	0.3%	0.4%	0.7%	*	0.0%	2.2%	-	-	-	*	0.0%	0.0%	0.0%
Continued HS	3.1%	3.2%	2.7%	*	4.0%	0.0%	-	-	-	*	0.0%	3.0%	12.5%
Dropped Out	5.8%	8.3%	2.7%	*	2.0%	4.4%	-	-	-	*	5.6%	0.0%	0.0%
Graduates and TxCHSE	91.1%	88.5%	94.7%	*	94.1%	95.6%	-	-	-	*	94.4%	97.0%	87.5%
Graduates, TxCHSE, and Continuers	94.2%	91.7%	97.3%	100.0%	98.0%	95.6%	-	-	-	100.0%	94.4%	100.0%	100.0%
Class of 2023													
Graduated	90.3%	88.7%	94.4%	-	96.0%	90.9%	-	-	-	*	100.0%	90.5%	60.0%
Received TxCHSE	0.3%	0.3%	0.0%	-	0.0%	0.0%	-	-	-	*	0.0%	0.0%	0.0%
Continued HS	3.1%	3.0%	1.4%	-	1.0%	2.3%	-	-	-	*	0.0%	1.6%	20.0%
Dropped Out	6.3%	7.9%	4.2%	-	3.0%	6.8%	-	-	-	*	0.0%	7.9%	20.0%
Graduates and TxCHSE	90.6%	89.0%	94.4%	-	96.0%	90.9%	-	-	-	*	100.0%	90.5%	60.0%
Graduates, TxCHSE, and Continuers	93.7%	92.1%	95.8%	-	97.0%	93.2%	-	-	-	*	100.0%	92.1%	80.0%
5-Year Extended Longitudinal Rate (Gr 9-12)													
Class of 2023													
Graduated	92.1%	90.3%	94.6%	-	95.1%	93.2%	-	-	-	*	93.3%	90.8%	80.0%
Received TxCHSE	0.4%	0.5%	0.0%	-	0.0%	0.0%	-	-	-	*	0.0%	0.0%	0.0%
Continued HS	1.0%	1.1%	0.7%	-	1.0%	0.0%	-	-	-	*	0.0%	0.0%	0.0%
Dropped Out	6.5%	8.2%	4.8%	-	3.9%	6.8%	-	-	-	*	6.7%	9.2%	20.0%
Graduates and TxCHSE	92.6%	90.7%	94.6%	-	95.1%	93.2%	-	-	-	*	93.3%	90.8%	80.0%
Graduates, TxCHSE, and Continuers	93.5%	91.8%	95.2%	-	96.1%	93.2%	-	-	-	*	93.3%	90.8%	80.0%

Texas Education Agency
2024-25 Attendance, Graduation, and Dropout Rates (TAPR)
 DEVINE ISD (163901) - MEDINA COUNTY

	State	Region 20	District	African American	Hispanic	White	American Indian	Asian	Pacific Islander	Two or More Races	Special Ed	Econ Disadv	EB/EL
Class of 2022													
Graduated	91.8%	89.8%	99.2%	-	98.7%	100.0%	-	-	*	*	100.0%	98.5%	*
Received TxCHSE	0.4%	0.5%	0.0%	-	0.0%	0.0%	-	-	*	*	0.0%	0.0%	*
Continued HS	1.0%	1.0%	0.0%	-	0.0%	0.0%	-	-	*	*	0.0%	0.0%	*
Dropped Out	6.8%	8.7%	0.8%	-	1.3%	0.0%	-	-	*	*	0.0%	1.5%	*
Graduates and TxCHSE	92.2%	90.3%	99.2%	-	98.7%	100.0%	-	-	*	*	100.0%	98.5%	*
Graduates, TxCHSE, and Continuers	93.2%	91.3%	99.2%	-	98.7%	100.0%	-	-	*	*	100.0%	98.5%	*
6-Year Extended Longitudinal Rate (Gr 9-12)													
Class of 2022													
Graduated	92.2%	90.2%	99.2%	-	98.7%	100.0%	-	-	*	*	100.0%	98.5%	*
Received TxCHSE	0.5%	0.6%	0.0%	-	0.0%	0.0%	-	-	*	*	0.0%	0.0%	*
Continued HS	0.5%	0.5%	0.0%	-	0.0%	0.0%	-	-	*	*	0.0%	0.0%	*
Dropped Out	6.8%	8.6%	0.8%	-	1.3%	0.0%	-	-	*	*	0.0%	1.5%	*
Graduates and TxCHSE	92.7%	90.8%	99.2%	-	98.7%	100.0%	-	-	*	*	100.0%	98.5%	*
Graduates, TxCHSE, and Continuers	93.2%	91.4%	99.2%	-	98.7%	100.0%	-	-	*	*	100.0%	98.5%	*
Class of 2021													
Graduated	92.7%	90.6%	97.3%	*	96.6%	98.3%	-	-	-	*	85.7%	97.0%	*
Received TxCHSE	0.5%	0.6%	0.0%	*	0.0%	0.0%	-	-	-	*	0.0%	0.0%	*
Continued HS	0.5%	0.5%	0.0%	*	0.0%	0.0%	-	-	-	*	0.0%	0.0%	*
Dropped Out	6.3%	8.4%	2.7%	*	3.4%	1.7%	-	-	-	*	14.3%	3.0%	*
Graduates and TxCHSE	93.2%	91.2%	97.3%	*	96.6%	98.3%	-	-	-	*	85.7%	97.0%	*
Graduates, TxCHSE, and Continuers	93.7%	91.6%	97.3%	*	96.6%	98.3%	-	-	-	*	85.7%	97.0%	*
4-Year Federal Graduation Rate Without Exclusions (Gr 9-12)													
Class of 2024	90.7%	88.1%	91.6%	*	90.5%	93.3%	-	-	-	*	94.4%	95.6%	70.0%
Class of 2023	90.3%	88.7%	92.7%	-	94.2%	88.9%	-	-	-	*	94.1%	87.9%	60.0%
RHSP/DAP Graduates (Longitudinal Rate)													
Class of 2024	44.9%	86.7%	-	-	-	-	-	-	-	-	-	-	-
Class of 2023	72.3%	95.1%	-	-	-	-	-	-	-	-	-	-	-
FHSP-E Graduates (Longitudinal Rate)													
Class of 2024	11.0%	3.1%	6.4%	*	7.4%	4.8%	-	-	-	*	5.9%	6.2%	14.3%
Class of 2023	4.3%	2.8%	0.7%	-	1.1%	0.0%	-	-	-	*	7.1%	0.0%	*
FHSP-DLA Graduates (Longitudinal Rate)													
Class of 2024	78.5%	84.7%	81.6%	*	77.9%	88.1%	-	-	-	*	41.2%	76.9%	57.1%
Class of 2023	84.3%	84.4%	75.7%	-	71.6%	85.0%	-	-	-	*	85.7%	61.4%	*
Texas First-DLA Graduates (Longitudinal Rate)													

Texas Education Agency
2024-25 Attendance, Graduation, and Dropout Rates (TAPR)
 DEVINE ISD (163901) - MEDINA COUNTY

	State	Region 20	District	African American	Hispanic	White	American Indian	Asian	Pacific Islander	Two or More Races	Special Ed	Econ Disadv	EB/EL
Class of 2024	0.1%	0.1%	0.0%	*	0.0%	0.0%	-	-	-	*	0.0%	0.0%	0.0%
Class of 2023	0.0%	0.1%	0.0%	-	0.0%	0.0%	-	-	-	*	0.0%	0.0%	*
RHSP/DAP/FHSP-E/FHSP-DLA/Texas First-DLA Graduates (Longitudinal Rate)													
Class of 2024	89.5%	87.9%	87.9%	*	85.3%	92.9%	-	-	-	*	47.1%	83.1%	71.4%
Class of 2023	88.6%	87.2%	76.5%	-	72.6%	85.0%	-	-	-	*	92.9%	61.4%	*
RHSP/DAP Graduates (Annual Rate)													
2023-24	24.6%	42.9%	-	-	-	-	-	-	-	-	-	-	-
2022-23	38.4%	85.7%	-	-	-	-	-	-	-	-	-	-	-
FHSP-E Graduates (Annual Rate)													
2023-24	11.0%	3.4%	10.3%	*	12.3%	6.5%	-	-	-	*	6.7%	9.3%	12.5%
2022-23	4.4%	3.0%	0.7%	-	1.0%	0.0%	-	-	-	*	6.3%	0.0%	*
FHSP-DLA Graduates (Annual Rate)													
2023-24	76.9%	83.0%	75.6%	*	70.8%	84.8%	-	-	-	*	46.7%	69.3%	62.5%
2022-23	82.5%	82.4%	74.1%	-	68.7%	87.2%	-	-	-	*	62.5%	61.4%	*
Texas First-DLA Graduates (Annual Rate)													
2023-24	0.1%	0.1%	0.0%	*	0.0%	0.0%	-	-	-	*	0.0%	0.0%	0.0%
2022-23	0.1%	0.2%	0.0%	-	0.0%	0.0%	-	-	-	-	0.0%	0.0%	0.0%
RHSP/DAP/FHSP-E/FHSP-DLA/Texas First-DLA Graduates (Annual Rate)													
2023-24	87.8%	86.4%	85.9%	*	83.0%	91.3%	-	-	-	*	53.3%	78.7%	75.0%
2022-23	86.8%	85.5%	74.8%	-	69.7%	87.2%	-	-	-	*	68.8%	61.4%	*

Texas Education Agency
2024-25 Graduation Profile (TAPR)
 DEVINE ISD (163901) - MEDINA COUNTY

	District Count	District Percent	State Count	State Percent
Graduates (2023-24 Annual Graduates)				
Total Graduates	156	100.0%	382,023	100.0%
By Ethnicity:				
African American	2	1.3%	48,064	12.6%
Hispanic	106	67.9%	200,942	52.6%
White	46	29.5%	101,714	26.6%
American Indian	0	0.0%	1,231	0.3%
Asian	0	0.0%	19,746	5.2%
Pacific Islander	0	0.0%	606	0.2%
Two or More Races	2	1.3%	9,720	2.5%
By Graduation Type:				
Minimum H.S. Program	0	0.0%	309	0.1%
Recommended H.S. Program/Distinguished Achievement Program	0	0.0%	101	0.0%
Foundation H.S. Program (No Endorsement)	22	14.1%	46,183	12.1%
Foundation H.S. Program (Endorsement)	16	10.3%	42,042	11.0%
Foundation H.S. Program (DLA)	118	75.6%	293,032	76.7%
Texas First Early H.S. Completion Program (Texas First-DLA)	0	0.0%	356	0.1%
Special Education Graduates				
Special Education Graduates	15	9.6%	35,935	9.4%
Economically Disadvantaged Graduates				
Economically Disadvantaged Graduates	75	48.1%	211,984	55.5%
Emergent Bilingual (EB)/English Learner (EL) Graduates				
Emergent Bilingual (EB)/English Learner (EL) Graduates	8	5.1%	56,967	14.9%
At-Risk Graduates				
At-Risk Graduates	61	39.1%	173,035	45.3%
CTE Completers				
CTE Completers	49	31.4%	127,800	33.5%

Texas Education Agency
2024-25 College, Career, and Military Readiness (CCMR) (TAPR)
 DEVINE ISD (163901) - MEDINA COUNTY

Academic Year	State	Region 20	District	African American	Hispanic	White	American Indian	Asian	Pacific Islander	Two or More Races	Special Ed	Econ Disadv	EB/EL
College, Career, and Military Ready Graduates (Student Achievement)													
College, Career, or Military Ready (Annual Graduates)													
2023-24	81.8%	72.2%	53.2%	*	46.2%	71.7%	-	-	-	*	53.3%	44.0%	50.0%
2022-23	76.3%	67.1%	54.0%	-	44.4%	76.9%	-	-	-	*	75.0%	36.8%	*
College Ready Graduates													
College Ready (Annual Graduates)													
2023-24	70.0%	60.8%	40.4%	*	32.1%	60.9%	-	-	-	*	53.3%	36.0%	12.5%
2022-23	61.9%	54.9%	39.6%	-	33.3%	53.8%	-	-	-	*	68.8%	24.6%	*
TSI Criteria Graduates in English Language Arts (Annual Graduates)													
2023-24	69.5%	59.1%	28.8%	*	20.8%	47.8%	-	-	-	*	13.3%	26.7%	0.0%
2022-23	62.8%	54.4%	23.0%	-	14.1%	46.2%	-	-	-	*	12.5%	8.8%	*
TSI Criteria Graduates in Mathematics (Annual Graduates)													
2023-24	63.2%	51.8%	69.2%	*	66.0%	73.9%	-	-	-	*	66.7%	70.7%	62.5%
2022-23	54.3%	46.5%	22.3%	-	14.1%	43.6%	-	-	-	*	12.5%	8.8%	*
TSI Criteria Graduates in Both Subjects (Annual Graduates)													
2023-24	57.4%	44.8%	25.6%	*	17.9%	43.5%	-	-	-	*	13.3%	24.0%	0.0%
2022-23	48.4%	38.8%	16.5%	-	8.1%	38.5%	-	-	-	*	12.5%	5.3%	*
AP / IB Met Criteria in Any Subject (Annual Graduates)													
2023-24	21.0%	20.3%	4.5%	*	1.9%	10.9%	-	-	-	*	0.0%	1.3%	0.0%
2022-23	20.4%	19.5%	5.0%	-	3.0%	10.3%	-	-	-	*	6.3%	0.0%	*
Associate Degree (Annual Graduates)													
2023-24	3.1%	2.3%	0.0%	*	0.0%	0.0%	-	-	-	*	0.0%	0.0%	0.0%
2022-23	2.5%	2.0%	0.0%	-	0.0%	0.0%	-	-	-	*	0.0%	0.0%	*
Dual Course Credits in Any Subject (Annual Graduates)													
2023-24	25.1%	25.3%	27.6%	*	16.0%	56.5%	-	-	-	*	13.3%	16.0%	0.0%
2022-23	23.6%	22.6%	29.5%	-	23.2%	43.6%	-	-	-	*	18.8%	15.8%	*
Onramps Course Credits (Annual Graduates)													
2023-24	5.7%	11.9%	0.0%	*	0.0%	0.0%	-	-	-	*	0.0%	0.0%	0.0%
2022-23	4.8%	9.6%	0.0%	-	0.0%	0.0%	-	-	-	*	0.0%	0.0%	*
Graduates Under an Advanced Diploma Plan and Identified as a Current Special Education Student (Annual Graduates)													
2023-24	6.0%	6.8%	5.1%	*	4.7%	6.5%	-	-	-	*	53.3%	6.7%	12.5%
2022-23	5.6%	6.2%	7.9%	-	8.1%	7.7%	-	-	-	*	68.8%	8.8%	*
Career / Military Ready Graduates													
Career or Military Ready (Annual Graduates)													
2023-24	38.1%	32.0%	31.4%	*	26.4%	43.5%	-	-	-	*	13.3%	17.3%	37.5%

Texas Education Agency
2024-25 College, Career, and Military Readiness (CCMR) (TAPR)
 DEVINE ISD (163901) - MEDINA COUNTY

Academic Year	State	Region 20	District	African American	Hispanic	White	American Indian	Asian	Pacific Islander	Two or More Races	Special Ed	Econ Disadv	EB/EL
2022-23	36.4%	28.7%	25.9%	-	20.2%	38.5%	-	-	-	*	37.5%	19.3%	*
Approved Industry-Based Certification (Annual Graduates)													
2023-24	34.9%	28.8%	31.4%	*	26.4%	43.5%	-	-	-	*	13.3%	17.3%	37.5%
2022-23	33.4%	25.7%	25.2%	-	20.2%	35.9%	-	-	-	*	31.3%	17.5%	*
Graduates with Level I or Level II Certificate (Annual Graduates)													
2023-24	1.1%	0.8%	0.0%	*	0.0%	0.0%	-	-	-	*	0.0%	0.0%	0.0%
2022-23	0.8%	0.6%	0.0%	-	0.0%	0.0%	-	-	-	*	0.0%	0.0%	*
Graduate with Completed IEP and Workforce Readiness (Annual Graduates)													
2023-24	2.7%	2.4%	0.0%	*	0.0%	0.0%	-	-	-	*	0.0%	0.0%	0.0%
2022-23	2.7%	2.1%	0.7%	-	0.0%	2.6%	-	-	-	*	6.3%	1.8%	*
U.S. Armed Forces Enlistment (Annual Graduates)													
2023-24	0.7%	1.0%	0.0%	*	0.0%	0.0%	-	-	-	*	0.0%	0.0%	0.0%
2022-23	0.6%	1.2%	0.0%	-	0.0%	0.0%	-	-	-	*	0.0%	0.0%	*

- Indicates there are no students in the group.

* Indicates results are masked due to small numbers to protect student confidentiality.

? Indicates that the data for this item were statistically improbable or were reported outside a reasonable range.

Texas Education Agency
2024-25 CCMR-Related Indicators (TAPR)
 DEVINE ISD (163901) - MEDINA COUNTY

	Academic Year	State	Region 20	District	African American	Hispanic	White	American Indian	Asian	Pacific Islander	Two or More Races	Special Ed	Econ Disadv	EB/EL
TSIA Results (Graduates >= Criterion) (Annual Graduates)														
Reading	2023-24	20.1%	17.9%	4.5%	*	4.7%	4.3%	-	-	-	*	6.7%	5.3%	0.0%
	2022-23	21.0%	18.5%	1.4%	-	2.0%	0.0%	-	-	-	*	0.0%	1.8%	*
Mathematics	2023-24	21.3%	17.9%	12.8%	*	7.5%	23.9%	-	-	-	*	6.7%	8.0%	0.0%
	2022-23	19.9%	17.5%	13.7%	-	10.1%	23.1%	-	-	-	*	6.3%	5.3%	*
Both Subjects	2023-24	12.7%	10.4%	1.3%	*	0.9%	2.2%	-	-	-	*	6.7%	1.3%	0.0%
	2022-23	12.5%	10.5%	0.0%	-	0.0%	0.0%	-	-	-	*	0.0%	0.0%	*
Completed and Received Credit for College Prep Courses (Annual Graduates)														
English Language Arts	2023-24	26.6%	14.4%	0.0%	*	0.0%	0.0%	-	-	-	*	0.0%	0.0%	0.0%
	2022-23	18.2%	8.5%	0.0%	-	0.0%	0.0%	-	-	-	*	0.0%	0.0%	*
Mathematics	2023-24	29.5%	21.3%	53.8%	*	57.5%	41.3%	-	-	-	*	66.7%	61.3%	62.5%
	2022-23	20.2%	15.7%	0.0%	-	0.0%	0.0%	-	-	-	*	0.0%	0.0%	*
Both Subjects	2023-24	20.2%	10.5%	0.0%	*	0.0%	0.0%	-	-	-	*	0.0%	0.0%	0.0%
	2022-23	12.5%	5.8%	0.0%	-	0.0%	0.0%	-	-	-	*	0.0%	0.0%	*
AP/IB-Results (Participation) (Grades 11-12)														
All Subjects	2024	25.7%	24.8%	4.2%	*	2.6%	8.0%	*	-	*	0.0%	0.0%	2.1%	5.6%
	2023	24.2%	22.8%	2.1%	*	0.5%	5.9%	-	-	-	*	0.0%	0.0%	0.0%
English Language Arts	2024	14.6%	15.3%	0.0%	*	0.0%	0.0%	*	-	*	0.0%	0.0%	0.0%	0.0%
	2023	13.8%	13.9%	0.0%	*	0.0%	0.0%	-	-	-	*	0.0%	0.0%	0.0%
Mathematics	2024	9.6%	7.3%	2.4%	*	0.5%	6.9%	*	-	*	0.0%	0.0%	0.7%	0.0%
	2023	7.4%	5.6%	2.1%	*	0.5%	5.9%	-	-	-	*	0.0%	0.0%	0.0%
Science	2024	10.9%	9.0%	0.0%	*	0.0%	0.0%	*	-	*	0.0%	0.0%	0.0%	0.0%
	2023	10.3%	8.5%	0.0%	*	0.0%	0.0%	-	-	-	*	0.0%	0.0%	0.0%
Social Studies	2024	13.7%	13.7%	0.0%	*	0.0%	0.0%	*	-	*	0.0%	0.0%	0.0%	0.0%
	2023	13.1%	12.4%	0.0%	*	0.0%	0.0%	-	-	-	*	0.0%	0.0%	0.0%
AP/IB Results (Examinees >= Criterion) (Grades 11-12)														
All Subjects	2024	56.9%	58.4%	33.3%	-	40.0%	28.6%	-	-	-	-	-	*	*
	2023	53.3%	53.3%	16.7%	-	* 20.0%	-	-	-	-	-	-	-	-
English Language Arts	2024	48.8%	49.0%	-	-	-	-	-	-	-	-	-	-	-
	2023	52.3%	53.2%	-	-	-	-	-	-	-	-	-	-	-
Mathematics	2024	53.4%	54.9%	14.3%	-	* 16.7%	-	-	-	-	-	-	*	-
	2023	50.1%	46.5%	16.7%	-	* 20.0%	-	-	-	-	-	-	-	-
Science	2024	46.1%	49.9%	-	-	-	-	-	-	-	-	-	-	-
	2023	44.8%	46.1%	-	-	-	-	-	-	-	-	-	-	-

Texas Education Agency
2024-25 CCMR-Related Indicators (TAPR)
 DEVINE ISD (163901) - MEDINA COUNTY

	Academic Year	State	Region 20	District	African American	Hispanic	White	American Indian	Asian	Pacific Islander	Two or More Races	Special Ed	Econ Disadv	EB/EL
Social Studies	2024	56.8%	61.3%	-	-	-	-	-	-	-	-	-	-	-
	2023	42.0%	41.4%	-	-	-	-	-	-	-	-	-	-	-
SAT/ACT Results (Annual Graduates)														
Tested	2023-24	79.1%	85.9%	46.2%	*	37.7%	63.0%	-	-	-	*	13.3%	38.2%	12.5%
	2022-23	79.3%	83.7%	44.6%	-	38.4%	61.5%	-	-	-	*	25.0%	28.1%	*
At/Above Criterion for All Examinees	2023-24	28.8%	24.4%	25.0%	*	22.5%	31.0%	-	-	-	*	*	27.6%	*
	2022-23	28.9%	25.1%	27.4%	-	7.9%	58.3%	-	-	-	-	*	12.5%	-
Average SAT Score (Annual Graduates)														
All Subjects	2023-24	975	948	969	*	937	1016	-	-	-	*	*	958	*
	2022-23	978	952	974	-	917	1065	-	-	-	-	930	897	-
English Language Arts and Writing	2023-24	496	484	497	*	480	521	-	-	-	*	*	494	*
	2022-23	497	486	499	-	468	546	-	-	-	-	470	449	-
Mathematics	2023-24	479	464	472	*	457	495	-	-	-	*	*	463	*
	2022-23	482	466	476	-	448	519	-	-	-	-	460	448	-
Average ACT Score (Annual Graduates)														
All Subjects	2023-24	19.3	17.4	*	-	-	*	-	-	-	-	*	*	-
	2022-23	19.2	17.6	21.0	-	21.0	21.0	-	-	-	-	-	-	-
English Language Arts	2023-24	19.0	17.0	*	-	-	*	-	-	-	-	*	*	-
	2022-23	18.8	17.2	21.3	-	21.0	21.3	-	-	-	-	-	-	-
Mathematics	2023-24	19.0	17.2	*	-	-	*	-	-	-	-	*	*	-
	2022-23	18.9	17.5	18.7	-	18.0	18.8	-	-	-	-	-	-	-
Science	2023-24	19.6	17.9	*	-	-	*	-	-	-	-	*	*	-
	2022-23	19.5	18.0	22.1	-	24.0	21.8	-	-	-	-	-	-	-

- Indicates there are no students in the group.
- * Indicates results are masked due to small numbers to protect student confidentiality.
- ? Indicates that the data for this item were statistically improbable or were reported outside a reasonable range.
- n/a Indicates data reporting is not applicable for this group.

Texas Education Agency
2024-25 Other Postsecondary Indicators (TAPR)
 DEVINE ISD (163901) - MEDINA COUNTY

	Academic Year	State	Region 20	District	African American	Hispanic	White	American Indian	Asian	Pacific Islander	Two or More Races	Special Ed	Econ Disadv	EB/EL
Advanced/Dual-Credit Course Completion (Grades 9-12)														
Any Subject	2023-24	45.7%	44.2%	34.5%	*	30.2%	42.3%	*	-	*	45.5%	24.4%	29.4%	27.3%
	2022-23	45.4%	43.8%	39.9%	*	33.0%	55.3%	-	-	*	45.5%	16.7%	27.3%	10.0%
English Language Arts	2023-24	17.8%	16.2%	7.6%	*	4.7%	13.1%	-	-	*	20.0%	1.3%	3.7%	0.0%
	2022-23	17.4%	15.8%	10.4%	*	6.4%	20.2%	-	-	*	0.0%	4.2%	4.0%	0.0%
Mathematics	2023-24	19.4%	16.5%	7.0%	*	3.4%	14.6%	-	-	*	10.0%	4.0%	3.8%	0.0%
	2022-23	19.5%	17.3%	13.2%	*	10.0%	21.4%	-	-	*	0.0%	5.8%	10.6%	7.1%
Science	2023-24	21.9%	21.8%	29.6%	*	28.2%	31.0%	-	-	*	40.0%	21.3%	29.2%	30.0%
	2022-23	21.5%	21.1%	25.0%	*	24.7%	26.4%	-	-	*	10.0%	12.1%	19.0%	11.1%
Social Studies	2023-24	24.5%	24.0%	14.0%	*	7.8%	26.6%	-	-	*	30.0%	3.9%	5.1%	0.0%
	2022-23	24.0%	23.2%	23.4%	*	14.7%	42.2%	-	-	*	36.4%	8.7%	9.4%	0.0%
Graduates Enrolled in Texas Institution of Higher Education (TX IHE)														
	2022-23	***	***	***	***	***	***	***	***	***	***	***	***	***
	2021-22	47.6%	50.7%	41.0%	-	32.5%	54.8%	-	-	100.0%	50.0%	21.4%	32.3%	0.0%
Graduates in TX IHE Completing One Year Without Enrollment in a Developmental Education Course														
	2022-23	***	***	***	***	***	***	***	***	***	***	***	***	***
	2021-22	53.6%	49.1%	46.3%	-	36.8%	57.1%	-	-	-	0.0%	50.0%	13.3%	-

- Indicates there are no students in the group.
- * Indicates results are masked due to small numbers to protect student confidentiality.
- ? Indicates that the data for this item were statistically improbable or were reported outside a reasonable range.
- *** TX IHE data not yet available.

Texas Education Agency
2024-25 Student Information (TAPR)
 DEVINE ISD (163901) - MEDINA COUNTY

Student Information	Membership				Enrollment			
	District		State		District		State	
	Count	Percent	Count	Percent	Count	Percent	Count	Percent
Total Students	1,967	100.0%	5,530,499	100.0%	1,972	100.0%	5,544,255	100.0%
Students by Grade								
Early Childhood Education	5	0.3%	18,464	0.3%	9	0.5%	26,099	0.5%
Pre-Kindergarten	84	4.3%	249,407	4.5%	84	4.3%	249,875	4.5%
Pre-Kindergarten: 3-year Old	26	1.3%	43,727	0.8%	26	1.3%	43,914	0.8%
Pre-Kindergarten: 4-year Old	58	2.9%	205,680	3.7%	58	2.9%	205,961	3.7%
Kindergarten	118	6.0%	359,286	6.5%	118	6.0%	359,871	6.5%
Grade 1	157	8.0%	377,900	6.8%	157	8.0%	378,335	6.8%
Grade 2	134	6.8%	389,823	7.0%	134	6.8%	390,170	7.0%
Grade 3	157	8.0%	406,424	7.3%	157	8.0%	406,747	7.3%
Grade 4	149	7.6%	405,454	7.3%	149	7.6%	405,715	7.3%
Grade 5	148	7.5%	404,900	7.3%	148	7.5%	405,128	7.3%
Grade 6	135	6.9%	404,802	7.3%	135	6.8%	404,988	7.3%
Grade 7	168	8.5%	407,375	7.4%	168	8.5%	407,512	7.4%
Grade 8	129	6.6%	410,722	7.4%	129	6.5%	410,871	7.4%
Grade 9	156	7.9%	459,854	8.3%	156	7.9%	460,045	8.3%
Grade 10	161	8.2%	439,300	7.9%	161	8.2%	439,519	7.9%
Grade 11	142	7.2%	410,245	7.4%	142	7.2%	410,503	7.4%
Grade 12	124	6.3%	386,543	7.0%	125	6.3%	388,877	7.0%
Ethnic Distribution								
African American	10	0.5%	706,216	12.8%	10	0.5%	707,648	12.8%
Hispanic	1,322	67.2%	2,961,084	53.5%	1,327	67.3%	2,967,187	53.5%
White	599	30.5%	1,347,596	24.4%	599	30.4%	1,352,852	24.4%
American Indian	3	0.2%	18,175	0.3%	3	0.2%	18,224	0.3%
Asian	7	0.4%	307,983	5.6%	7	0.4%	308,431	5.6%
Pacific Islander	3	0.2%	8,729	0.2%	3	0.2%	8,744	0.2%
Two or More Races	23	1.2%	180,716	3.3%	23	1.2%	181,169	3.3%
Sex								
Female	962	48.9%	2,702,798	48.9%	965	48.9%	2,707,618	48.8%
Male	1,005	51.1%	2,827,701	51.1%	1,007	51.1%	2,836,637	51.2%
Other Student Cohorts								
Economically Disadvantaged	1,099	55.9%	3,346,090	60.5%	1,103	55.9%	3,349,612	60.4%
Non-Educationally Disadvantaged	868	44.1%	2,184,409	39.5%	869	44.1%	2,194,643	39.6%
Section 504 Students	186	9.5%	375,297	6.8%	186	9.4%	375,601	6.8%
EB Students/EL	124	6.3%	1,343,669	24.3%	124	6.3%	1,345,042	24.3%
Students w/ Disciplinary Placements (2023-24)	34	1.6%	122,515	2.1%				
Students w/ Dyslexia	133	6.8%	356,584	6.4%	133	6.7%	356,830	6.4%

Texas Education Agency
2024-25 Student Information (TAPR)
DEVINE ISD (163901) - MEDINA COUNTY

Student Information	Membership				Enrollment			
	District		State		District		State	
	Count	Percent	Count	Percent	Count	Percent	Count	Percent
Foster Care	0	0.0%	11,656	0.2%	0	0.0%	11,713	0.2%
Homeless	23	1.2%	77,954	1.4%	23	1.2%	78,060	1.4%
Immigrant	8	0.4%	193,676	3.5%	8	0.4%	193,831	3.5%
Migrant	2	0.1%	13,377	0.2%	2	0.1%	13,426	0.2%
Title I	879	44.7%	3,683,060	66.6%	879	44.6%	3,689,382	66.5%
Military Connected	173	8.8%	229,259	4.1%	173	8.8%	229,370	4.1%
At-Risk	653	33.2%	2,960,262	53.5%	654	33.2%	2,963,913	53.5%
Students by Instructional Program								
Bilingual/ESL Education	118	6.0%	1,344,546	24.3%	118	6.0%	1,345,594	24.3%
Career and Technical Education	509	25.9%	1,531,679	27.7%	-	-	-	-
Career and Technical Education (9-12 grades only)	506	86.8%	1,254,694	74.0%	-	-	-	-
Gifted and Talented Education	115	5.8%	483,301	8.7%	115	5.8%	483,373	8.7%
Special Education	354	18.0%	846,876	15.3%	358	18.2%	856,651	15.5%
Students with Disabilities by Type of Primary Disability								
Total Students with Disabilities	354		843,012					
Students with Intellectual Disabilities	164	46.3%	407,120	48.3%				
Students with Physical Disabilities	105	29.7%	143,568	17.0%				
Students with Autism	**	**	141,526	16.8%				
Students with Behavioral Disabilities	56	15.8%	137,182	16.3%				
Students with Non-Categorical Early Childhood	*	*	13,616	1.6%				
Mobility (2023-24)								
Total Mobile Students	237	12.7%	882,523	16.4%				
African American	8	0.4%	180,657	3.3%				
Hispanic	164	8.8%	481,794	8.9%				
White	60	3.2%	157,650	2.9%				
American Indian	2	0.1%	3,546	0.1%				
Asian	0	0.0%	27,084	0.5%				
Pacific Islander	0	0.0%	1,905	0.0%				
Two or More Races	3	0.2%	29,887	0.6%				
Special Ed Students who are Mobile	37	10.7%	149,136	17.3%				
Count and Percent of EB Students/EL who are Mobile	26	22.4%	233,506	17.9%				
Count and Percent of Econ Dis Students who are Mobile	146	13.4%	645,101	19.0%				
Student Attrition (2023-24)								
Total Student Attrition	165	11.6%	765,408	18.0%				

Texas Education Agency
2024-25 Student Information (TAPR)
 DEVINE ISD (163901) - MEDINA COUNTY

Student Information	Non-Special Education Rates		Special Education Rates	
	District	State	District	State
Retention Rates by Grade				
Kindergarten	0.0%	1.3%	3.2%	3.6%
Grade 1	5.6%	1.9%	6.7%	3.0%
Grade 2	2.7%	1.1%	4.9%	1.4%
Grade 3	0.0%	0.6%	0.0%	0.6%
Grade 4	0.9%	0.4%	0.0%	0.4%
Grade 5	0.0%	0.3%	0.0%	0.4%
Grade 6	0.0%	0.3%	0.0%	0.4%
Grade 7	0.0%	0.4%	0.0%	0.5%
Grade 8	0.0%	0.4%	0.0%	0.5%
Grade 9	8.0%	7.3%	6.9%	11.0%

	District		State	
	Count	Percent	Count	Percent
Data Quality				
Underreported Students	18	1.9%	11,417	0.4%

37

Class Size Averages by Grade and Subject
 (Derived from teacher responsibility records):

Class Size Information	District	State
Elementary		
Kindergarten	17.9	18.9
Grade 1	21.3	19.2
Grade 2	20.3	19.4
Grade 3	23.4	20.1
Grade 4	22.5	20.0
Grade 5	26.3	21.3
Grade 6	21.0	19.8
Secondary		
English/Language Arts	18.2	16.4
Foreign Languages	22.3	18.9
Mathematics	18.0	17.8
Science	19.9	18.9
Social Studies	19.1	18.9

Texas Education Agency
2024-25 Staff Information (TAPR)
 DEVINE ISD (163901) - MEDINA COUNTY

	District		State	
Staff Information	Count	Percent	Count	Percent
Total Staff	278.6	100.0%	764,857.7	100.0%
Professional Staff	171.0	61.4%	487,682.3	63.8%
Teachers	133.1	47.8%	369,689.2	48.3%
Professional Support	20.9	7.5%	82,751.4	10.8%
Campus Administration (School Leadership)	13.0	4.7%	25,687.5	3.4%
Central Administration	4.0	1.4%	9,554.2	1.2%
Educational Aides	45.9	16.5%	81,972.7	10.7%
Auxiliary Staff	61.7	22.1%	195,202.8	25.5%
Librarians and Counselors (Headcount)				
Full-time Librarians	1.0	n/a	4,125.0	n/a
Part-time Librarians	0.0	n/a	583.0	n/a
Full-time Counselors	5.0	n/a	13,704.0	n/a
Part-time Counselors	1.0	n/a	1,298.0	n/a
Total Minority Staff	130.1	46.7%	423,307.3	55.3%
Teachers by Ethnicity				
African American	0.0	0.0%	47,165.6	12.8%
Hispanic	47.0	35.3%	114,597.9	31.0%
White	83.1	62.4%	193,115.3	52.2%
American Indian	0.0	0.0%	1,235.8	0.3%
Asian	0.0	0.0%	8,295.0	2.2%
Pacific Islander	0.0	0.0%	466.9	0.1%
Two or More Races	3.0	2.3%	4,812.6	1.3%
Teachers by Sex				
Males	34.0	25.5%	90,958.2	24.6%
Females	99.1	74.5%	278,731.0	75.4%
Teachers by Highest Degree Held				
No Degree	2.0	1.5%	8,698.9	2.4%
Bachelors	100.5	75.5%	264,052.9	71.4%
Masters	30.6	23.0%	93,864.5	25.4%
Doctorate	0.0	0.0%	3,072.9	0.8%
Teachers by Years of Experience				
Beginning Teachers	8.0	6.0%	26,999.3	7.3%
1-5 Years Experience	34.0	25.5%	104,446.4	28.3%
6-10 Years Experience	18.0	13.5%	72,857.4	19.7%
11-20 Years Experience	40.7	30.6%	101,940.9	27.6%
21-30 Years Experience	28.4	21.3%	52,207.3	14.1%
Over 30 Years Experience	4.0	3.0%	11,237.9	3.0%
Number of Students per Teacher	14.8	n/a	15.0	n/a

Texas Education Agency
2024-25 Staff Information (TAPR)
 DEVINE ISD (163901) - MEDINA COUNTY

Staff Information	District	State
Experience of Campus Leadership		
Average Years Experience of Principals	6.2	6.0
Average Years Experience of Principals with District	3.8	5.1
Average Years Experience of Assistant Principals	5.2	5.1
Average Years Experience of Assistant Principals with District	5.0	4.3
Average Years Experience of Teachers	13.3	11.2
Average Years Experience of Teachers with District	8.0	7.0
Average Teacher Salary by Years of Experience (regular duties only)		
Beginning Teachers	\$50,417	\$55,689
1-5 Years Experience	\$57,682	\$59,266
6-10 Years Experience	\$57,350	\$62,607
11-20 Years Experience	\$62,186	\$66,353
21-30 Years Experience	\$66,964	\$70,976
Over 30 Years Experience	\$67,150	\$75,042
Average Actual Salaries (regular duties only)		
Teachers	\$60,844	\$63,751
Professional Support	\$70,526	\$75,909
Campus Administration (School Leadership)	\$77,109	\$88,786
Central Administration	\$113,523	\$118,447
Instructional Staff Percent	67.7%	64.8%
Turnover Rate for Teachers	19.4%	18.8%
Staff Exclusions		
Shared Services Arrangement Staff:		
Professional Staff	0.0	1,167.5
Educational Aides	0.0	197.4
Auxiliary Staff	0.0	398.6
Contracted Instructional Staff	0.0	1,637.7

39

Designation	District		State	
	Headcount	Average Payout	Headcount	Average Payout
Teacher Incentive Allotment				
Recognized	-	-	12,718	\$5,567
Exemplary	-	-	16,951	\$11,062
Master	-	-	10,103	\$20,910

Texas Education Agency
2024-25 Staff Information (TAPR)
 DEVINE ISD (163901) - MEDINA COUNTY

Program Information	District		State	
	Count	Percent	Count	Percent
Teachers by Program (population served)				
Bilingual/ESL Education	0.4	0.3%	23,158.4	6.3%
Career and Technical Education	10.3	7.7%	20,492.0	5.5%
Compensatory Education	7.5	5.7%	9,612.7	2.6%
Gifted and Talented Education	5.6	4.2%	5,840.0	1.6%
Regular Education	97.4	73.2%	255,127.2	69.0%
Special Education	11.5	8.7%	42,195.7	11.4%
Other	0.3	0.3%	13,272.1	3.6%

- Indicates there is no data for the item.

* Indicates results are masked due to small numbers.

** When only one student disability or assessment group is masked, then the second smallest student disability or assessment group is masked regardless of size.

n/a Indicates data reporting is not applicable for this group.

? Indicates that the data for this item were statistically improbable or were reported outside a reasonable range.

Link to: [PEIMS Financial Standard Reports 2023-24 Financial Actual Report](#)
 (To open link in a new window, press the "Ctrl" key and click on the link.)



Devine Independent School District Board of Trustees Agenda Document

Meeting Date: February 16, 2026

Agenda Item: Minutes of Board Meeting (s)

Background Information:

Every month the office will submit to the Board of Trustees for approval a copy of last month's minutes for approval.

Administrative Consideration:

BE (LOCAL) – Board action shall be carefully recorded by the secretary or clerk; when approved, these minutes shall serve as the legal record of official Board actions. The written minutes of all meetings shall be approved by vote of the Board and signed by the President and the Secretary of the Board.

The official minutes shall be retained on file in the office of the Superintendent and shall be available for examination during regular office hours.

Budgetary Consideration:

None

Supporting Documents:

BE (LOCAL) Board Meetings

Recommendation:

Approve minutes for the regular board meeting on January 22, 2026.

Respectfully Submitted by:

Geri Woods
Superintendent's Secretary

Approved by:

Dr. Todd Grandjean
Superintendent of Schools

Minutes of Regular Meeting

The Board of Trustees

Devine ISD

A Regular Meeting of the Board of Trustees of Devine ISD was held on Thursday, January 22, 2026 beginning at 6:30 PM in the Devine Student Activity Center (DSAC), 194 Arabian Way, Devine, TX 78016

Board Members Present: Nancy Pepper (President), Henry Moreno (Vice President), Keri James (Secretary), Carl Brown, Alixana Buvinghausen, Candace Esparza.

Board Members Absent: Chris Davis

Guests Present: Anton Riecher (The Devine News), Rick & Lindzye Smith, A. Villerreal, Misty Salazar, Darrel & Aizlyn Dubose, Catherine Brown, Shelby Haass, Jacob Campsey, Doug Bull, Kandy Stein, Linsey Outlaw.

School Officials Present: Dr. Todd Grandjean (Superintendent), Dawn Schneider (Director of HR/Info Mgmt), Michael Gomez (DHS Principal), Kandi Darnell (DMS Principal), Lysandra Reyes (Intermediate Principal), Mark Raygosa (Elementary Principal), JodiAnn Dzierzanowski (DAEP/DLA Principal), Jenni Hagdorn (Special Ed Director), Shannon Ramirez (CFO), Geri Woods (Recording Secretary)

1. **Call to Order, Roll Call and Declaration of Quorum**

Nancy Pepper called this meeting of the Devine Independent School District Board of Trustees to order at 6:30 p.m. and stated for the record that a quorum of board members was present, that this meeting had been duly called, and that notice of this meeting had been posted in accordance with the Texas Open Meetings Act, Texas Government Code Chapter 551. She further stated that trustees Candace Espinoza, Henry Moreno, Keri James, Carl Brown, Ali Buvinghausen, and Nancy Pepper were present.

2. **Pledge of Allegiance and Invocation** led by Nancy Pepper

3. **Recognition and Presentations**

A. Board Recognition

Todd Grandjean recognized the board members for their years of service. Intermediate Principal, Lysandra Reyes and Elementary Principal, Mark Raygosa each showed a video thanking the board members for what they do.

1. Folklorico Presentation

The Intermediate Folklorico Club performed.

B. FCCLA Project Presentation: Public Policy Advocacy

FCCLA students Catherine Brown and Kayla Dzierzanowski gave their presentation on recycling.

4. **Citizen Communication**

A. Public Comment for Non-Agenda Items. None.

B. Public Address for Items on the Agenda. None.

5. **DLA/DAEP Campus Report**

Principal, JodiAnn Dzierzanowski, reported on the DLA/DAEP campus and students' achievements.

6. **Administrative Reports and Discussion**

A. Central Office Reports

1. Superintendent's Monthly Reports on Board Priorities, 2023 Bond Projects, Safety & Security Report, Monthly Superintendent and District event calendar

2. Director of HR/Info Mgmt Monthly Reports

3. Director of Special Education Monthly Reports

B. Business Office Monthly Reports and Payment of Bills

C. Principals' Reports on Campus Activities

1. Devine High School Principal's Report

2. Devine Middle School Principal's Report

3. Devine Intermediate School Principal's Report

4. JJ Ciavarra Elementary School Principal's Report
5. Devine Learning Center/DAEP Principal Monthly Reports
- D. Directors' Monthly Reports
7. **Consent Agenda**

Carl Brown moved and seconded by Alixana Buvinghausen to approve consent agenda as presented. This motion passed, 6-0.

Those in favor: Brown, Buvinghausen, Esparza, James, Moreno, Pepper
Those opposed: 0; Absent: Davis

- A. Minutes of December 15, 2026 Board Meeting
- B. 2026 Board Training Calendar
- C. DEF Donation
- D. Adaptive Bikes Donation by Believe it Foundation

8. **Action Item(s):**

A. Carl Brown moved and seconded by Henry Moreno to call for school board election for District 3 and District 4 to be held on Saturday, May 2, 2026 as presented. This motion passed, 6-0.

Those in favor: Brown, Buvinghausen, Esparza, James, Moreno, Pepper
Those opposed: 0; Absent: Davis

B. Consider and Take Possible Action in Regard to the DMS Gym Floor
No action taken.

C. Carl Brown moved and seconded by Keri James to Approve a \$5,000 Stipend for Academic Liaison/Recruiting Coordinator as presented. This motion passed, 6-0.

Those in favor: Brown, Buvinghausen, Esparza, James, Moreno, Pepper
Those opposed: 0; Absent: Davis

D. Henry Moreno moved and seconded by Carl Brown to set the rate for early notice incentive award at \$500 per employee for up to 10 employees as presented. This motion passed, 6-0.

Those in favor: Brown, Buvinghausen, Esparza, James, Moreno, Pepper
Those opposed: 0; Absent: Davis

E. Alixana Buvinghausen moved and seconded by Candace Esparza to set March 26, 2026 for the March board meeting as presented. This motion passed, 6-0.

Those in favor: Brown, Buvinghausen, Esparza, James, Moreno, Pepper
Those opposed: 0; Absent: Davis

9. **Closed Session**

Nancy Pepper stated for the record that the Board of Trustees, beginning at 7:19 p.m., will convene in a closed session in accordance with the Texas Open Meetings Act, for the purpose of discussing items listed under Texas Government Code Section 551.074 and 551.082. NO FINAL ACTION, DECISIONS, OR VOTES WILL BE TAKEN WHILE THE BOARD IS IN EXECUTIVE SESSION.

10. **Reconvene from Closed Session**

The board reconvened in open session at 8:34 p.m.

11. **Action Items Discussed in Closed Session**

A. Carl Brown moved and seconded by Keri James to approve the Superintendent's new contract for a term beginning July 1, 2026 through June 30, 2029 as discussed in closed session. This motion passed, 6-0.

Those in favor: Brown, Buvinghausen, Esparza, James, Moreno, Pepper
Those opposed: 0; Absent: Davis

12. **Adjournment**

Henry Moreno moved and seconded by Ali Buvinghausen to adjourn. This motion passed, 6-0.

Those in favor: Brown, Buvinghausen, Esparza, James, Moreno, Pepper
Those opposed: 0; Absent: Davis

Meeting adjourned at 8:35 p.m.



Devine Independent School District Board of Trustees Agenda Document

Meeting Date: February 16, 2026

Agenda Item: 2025-2026 Budget Amendment

Background Information:

Budget amendments are mandated by the state for budgeted funds reallocated from one function level to another. These changes are usually the result of unexpected levels of expenditures in certain Functional areas and must be amended in the budget for legal compliance.

Administrative Consideration:

TEA – Financial Accounting System Resource Guide

Budgetary Consideration:

Fund 199:

Reallocate funds in functions 11, 21, and 31 for SPED contracted services.
Increase function 51 \$75,000.

Total amount towards fund balance: \$75,000.00.

Total amount against fund balance for the fiscal year: (\$2,649,977).

Fund 240:

Increase function 35 by \$132,000.00 for salaries and repairs.

Total amount towards fund balance: \$132,000.00.

Total amount against fund balance for the fiscal year: (\$137,000.00).

Supporting Documents:

See attached budget amendment

Recommendation:

Approve the Budget Amendment.

Respectfully Submitted by:

Shannon Ramirez
Chief Financial Officer

Approved by:

Todd Grandjean
Superintendent of Schools

**ESTIMATED REVENUES, APPROPRIATED EXPENDITURES
OTHER RESOURCES AND USES
BUDGET FOR 2025-2026**

	199 General Fund Current Budget	199 General Fund Amended Budget	Increase/ (Decrease)	240 Food Service Current Budget	240 Food Service Proposed Budget	Increase/ (Decrease)	599 Debt Service Current Budget	599 Debt Service Proposed Budget	Increase/ (Decrease)	98 Memorandum Proposed Budget
REVENUES:										
5700	\$ 5,051,780	\$ 5,051,780	\$ -	\$ 260,000	\$ 260,000	\$ -	\$ 1,407,526	\$ 1,407,526	\$ -	\$ 6,719,306
5800	\$ 18,337,411	\$ 18,337,411	\$ -	\$ 10,000	\$ 10,000	\$ -	\$ 213,503	\$ 213,503	\$ -	\$ 18,560,914
5900	\$ 40,000	\$ 40,000	\$ -	\$ 780,000	\$ 780,000	\$ -	\$ -	\$ -	\$ -	\$ 820,000
										\$ -
5030	\$ 23,429,191	\$ 23,429,191	\$ -	\$ 1,050,000	\$ 1,050,000	\$ -	\$ 1,621,029	\$ 1,621,029	\$ -	\$ 26,100,220
EXPENDITURES:										
0011	\$ 12,716,991	\$ 12,736,991	\$ 20,000	\$ -	\$ -	\$ -	\$ -	\$ -	\$ -	\$ 12,736,991
0012	\$ 244,994	\$ 244,994	\$ -	\$ -	\$ -	\$ -	\$ -	\$ -	\$ -	\$ 244,994
0013	\$ 375,413	\$ 375,413	\$ -	\$ -	\$ -	\$ -	\$ -	\$ -	\$ -	\$ 375,413
0021	\$ 230,082	\$ 214,082	\$ (16,000)	\$ -	\$ -	\$ -	\$ -	\$ -	\$ -	\$ 214,082
0023	\$ 1,260,540	\$ 1,260,540	\$ -	\$ -	\$ -	\$ -	\$ -	\$ -	\$ -	\$ 1,260,540
0031	\$ 1,164,763	\$ 1,160,763	\$ (4,000)	\$ -	\$ -	\$ -	\$ -	\$ -	\$ -	\$ 1,160,763
0032	\$ -	\$ -	\$ -	\$ -	\$ -	\$ -	\$ -	\$ -	\$ -	\$ -
0033	\$ 258,592	\$ 258,592	\$ -	\$ -	\$ -	\$ -	\$ -	\$ -	\$ -	\$ 258,592
0034	\$ 891,901	\$ 891,901	\$ -	\$ -	\$ -	\$ -	\$ -	\$ -	\$ -	\$ 891,901
0035	\$ -	\$ -	\$ -	\$ 1,050,000	\$ 1,184,500	\$ 132,000	\$ -	\$ -	\$ -	\$ 1,184,500
0036	\$ 1,309,303	\$ 1,309,303	\$ -	\$ -	\$ -	\$ -	\$ -	\$ -	\$ -	\$ 1,309,303
0041	\$ 1,017,957	\$ 1,017,957	\$ -	\$ -	\$ -	\$ -	\$ -	\$ -	\$ -	\$ 1,017,957
0051	\$ 2,751,658	\$ 3,026,658	\$ 275,000	\$ -	\$ -	\$ -	\$ -	\$ -	\$ -	\$ 3,026,658
0052	\$ 213,564	\$ 213,564	\$ -	\$ -	\$ -	\$ -	\$ -	\$ -	\$ -	\$ 213,564
0053	\$ 601,667	\$ 601,667	\$ -	\$ -	\$ -	\$ -	\$ -	\$ -	\$ -	\$ 601,667
0061	\$ 36,150	\$ 36,150	\$ -	\$ -	\$ -	\$ -	\$ -	\$ -	\$ -	\$ 36,150
0071	\$ 188,116	\$ 188,116	\$ -	\$ -	\$ 2,500	\$ 2,500	\$ 1,423,132	\$ 1,423,132	\$ -	\$ 1,613,748
0081	\$ -	\$ 2,413,477	\$ 2,413,477	\$ -	\$ -	\$ -	\$ -	\$ -	\$ -	\$ 2,413,477
0095	\$ 7,500	\$ 7,500	\$ -	\$ -	\$ -	\$ -	\$ -	\$ -	\$ -	\$ 7,500
0099	\$ 160,000	\$ 160,000	\$ -	\$ -	\$ -	\$ -	\$ -	\$ -	\$ -	\$ 160,000
6050	\$ 23,429,191	\$ 26,117,668	\$ 2,688,477	\$ 1,050,000	\$ 1,187,000	\$ 132,000	\$ 1,423,132	\$ 1,423,132	\$ -	\$ 28,727,800
OTHER SOURCES AND USES										
7060	\$ -	\$ -	\$ -	\$ -	\$ -	\$ -	\$ -	\$ -	\$ -	\$ -
7912	\$ -	\$ 38,500	\$ 38,500	\$ -	\$ -	\$ -	\$ -	\$ -	\$ -	\$ -
7914	\$ -	\$ -	\$ -	\$ -	\$ -	\$ -	\$ -	\$ -	\$ -	\$ -
8060	\$ -	\$ -	\$ -	\$ -	\$ -	\$ -	\$ -	\$ -	\$ -	\$ -
7000	\$ -	\$ 38,500	\$ 38,500	\$ -	\$ -	\$ -	\$ -	\$ -	\$ -	\$ -
Excess (Deficiency) of Revenues and Other Sources										
1200	\$ -	\$ (2,649,977)	\$ (2,649,977)	\$ -	\$ (137,000)	\$ (132,000)	\$ 197,897	\$ 197,897	\$ -	\$ (2,627,580)
0100	\$ 15,126,917	\$ 15,126,917	\$ -	\$ 818,944	\$ 818,944	\$ -	\$ 1,409,719	\$ 1,409,719	\$ -	\$ 17,355,580
3000	\$ 15,126,917	\$ 12,476,940	\$ (2,649,977)	\$ 818,944	\$ 681,944	\$ (137,000)	\$ 1,607,616	\$ 1,607,616	\$ -	\$ 14,728,000

HVAC		
IS rm 23	\$2950.00	Heat Kit
IS rm 7	\$3050.00	Heat kit
MS 300 wing	\$5250.00	Fixing switches and burnt wiring
Way services	\$8000.00	¾ IS no controls
Kitchen Equipment		
MS Ice Machine	\$2500.00	Circuit board
Milk Boxes	\$1675.00	Replace gaskets
DSAC Cooler	\$3000.00	low on freon
DSAC Cooler	\$7000.00	Replace cooler
HS		
IDF room	\$5000.00	Electrical repairs
Central Office	\$20,000.00	Replace coils
Bus Barn	\$4000.00	Plumbing leak
Water Well	\$5000.00	Replace sand filter
Fire alarms	\$5000.00	Yearly Inspections

This is what I know about so FAR.

Just so you know the reason I put the Central Office coils back on there was I spent that money on your Central office freon and plumbing leaks at the IS



Devine Independent School District

605 W. Hondo Ave., Devine, Texas 78016

(830) 851-0795 Fax (830) 663-6706
Dr. Todd Grandjean, Superintendent

**PROCLAMATION
PUBLIC SCHOOL WEEK**

WHEREAS at no time has there been a greater need for a strong, well supported system of public education than today; and

WHEREAS the future of Texas’ and Devine’s stability and economic growth depends on a strong, well supported public school system to develop a competent work force for the next century; and

WHEREAS strong community support is essential for this effort to achieve excellence and equity for all students in our community; and

WHEREAS for more than forty years the community of Devine has observed Public School Week; and

WHEREAS the Board of Education of the Devine Independent School District wishes to continue this special observance by encouraging parents, friends, and citizens to visit their public schools, to recognize the importance of education, to become more active in supporting school programs, and to commend those who have dedicated their careers to public school education; now, therefore, be it

RESOLVED, that the Board of Trustees of the Devine Independent School District set aside the week of March 2 – March 6 for the observance of Public School Week in Devine, Texas

WITNESS our signatures this 16th day of *February* 2026.

Nancy Pepper, President

Carl Brown, Member

Henry Moreno, Vice President

Chris Davis, Member

Keri James, Secretary

Ali Buvinghausen, Member

Candace Espinoza, Member

History of Texas Public Schools Week

The Freemasons in the state of Texas initiated the celebration of Texas Public Schools Week (TPSW). The celebration is traditionally proclaimed for the first full week in March in order to coordinate with the celebration of Texas Independence Day on March 2.

In December 1950, Grand Master William Jennings Burris, who had been active in the educational programs of the public schools of McAllen, outlined this program for the observance of Public Schools Week. His desire was to create a long-lasting program of collaboration with all Texas citizens to an important institution and invaluable resource--our public schools and our children. Burris issued a proclamation calling upon all Texas Masons to not only assist in the program, but to impress upon their friends the importance of a closer affiliation between parents and teachers, and a revival of interest in the educational system.

In his message, Burris said:

"It is important that each of the Lodges understand fully that the proclamation that I issued on December 26 is to be fulfilled in each point, as it is so important that we, as Masons, dedicate this one week to the very important subject of Public Schools, since through the effort of the Order, public schools in Texas were given their birthright. I feel that the type of program proposed will accomplish this important undertaking."

The Texas School Public Relations Association (TSPRA) began a tradition of designing a campaign logo and theme each year to help school districts coordinate their celebrations. Members of the association create and produce a kit which besides the logo includes celebration ideas, sample press releases, proclamations, and more. These kits were especially helpful for smaller districts who did not have the creative resources to come up with their own campaign.

TSPRA has found though that many schools and districts no longer have time to fully celebrate during that first week due to statewide standardized exams. For awhile, the association suggested that schools select any week in March to celebrate. The Pick-a-Week in March seemed to solve the problem for awhile. But soon that too posed problems with testing and spring break schedules.

After considering several options, TSPRA decided to rename their campaign efforts as Celebrate Texas Public Schools, taking the focus off of just a one week celebration and moving to a year long campaign.



Devine Independent School District Board of Trustees Agenda Document

Meeting Date: February 16, 2026

Agenda Item: 2026-2027 Budget Workshops

Background Information:

The Texas Education Agency mandates that every school in the State of Texas must have approved a budget by June 28 if the district uses a July 1 fiscal year start date. The president of the board of trustees must call a public meeting of the board of trustees, giving ten days public notice in a newspaper, for the adoption of the district's budget and tax rate. The board of trustees will need to schedule some budget workshops. Suggested dates are Monday March 30, 2026, Tuesday May 5, 2026, and Thursday May 28, 2026, if needed.

Administrative Consideration:

CE(Local and Legal)

Financial Accountability System Resource Guide

Budgetary Consideration:

Supporting Documents:

Budget Timeline

Recommendation:

Set budget workshop dates for suggested dates: Monday March 30, 2026, Tuesday May 5, 2026, and Thursday May 28, 2026, if needed.

Respectfully Submitted by:

Shannon Ramirez
Director of Finance

Approved by:

Todd Grandjean
Superintendent of Schools



DEVINE ISD BUDGET TIMELINE FOR FISCAL YEAR 2026-2027

Presented by:
Shannon Ramirez
CFO

February 2026



Budget Workshops

- Begin in April rather than May
- Schedule workshops 1 & 2 separately from regular Board meeting to allow for more discussion time
- Preliminary Property Values are due at end of April
 - *Determines additional revenue*

- Budget Workshop 1 : Early to mid April
 - *District Budget Priorities for 2026-2027*
 - Balanced budget
 - Pay increases
 - Retention/Staffing
 - Bond Projects and use of fund balance

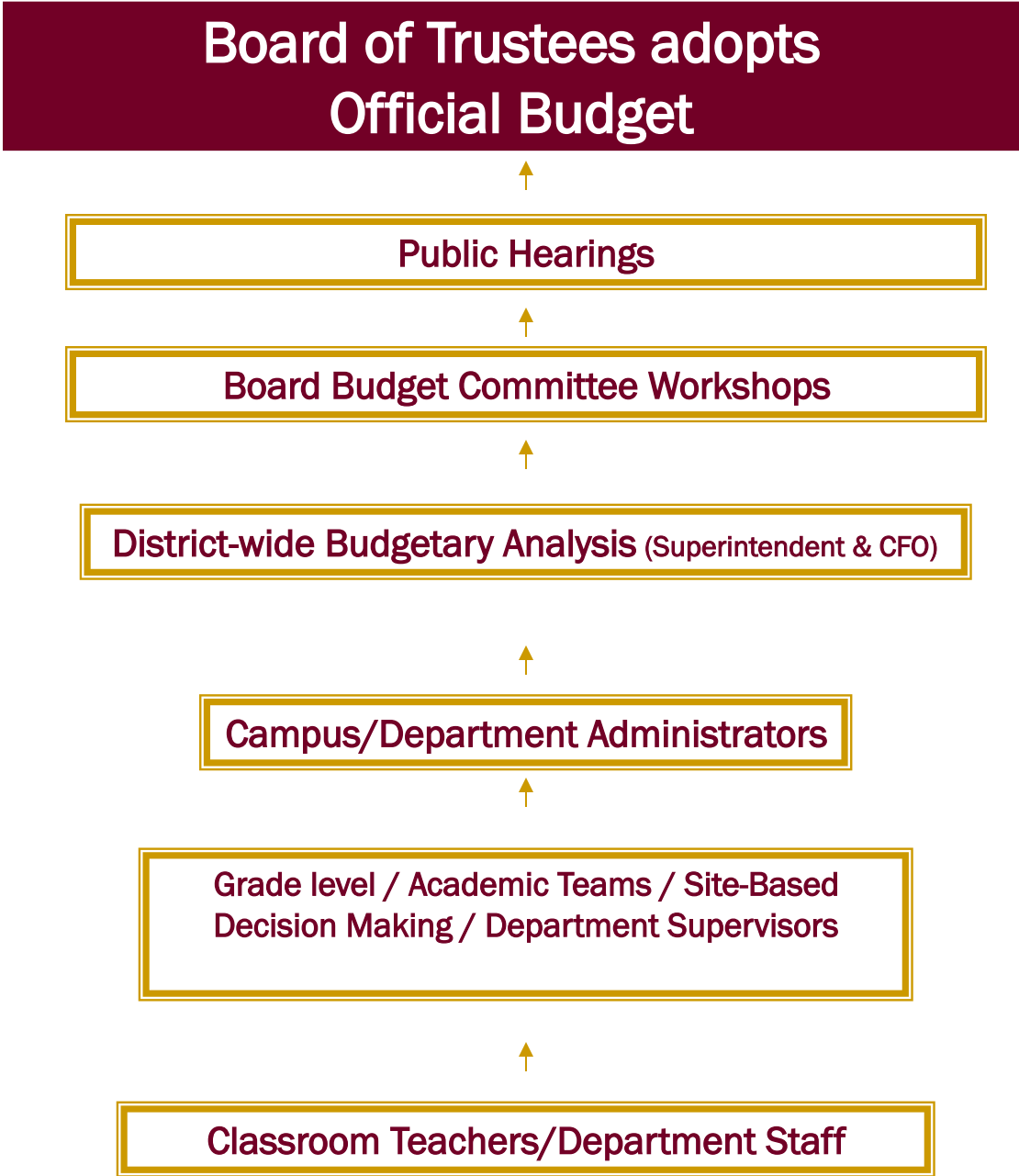
- Budget Workshop 2 : Early May
 - *Recommendations for pay increases*
 - *Prioritize capital projects*

- Budget Workshop 3: Early June

Budget Calendar for Fiscal Year 2025-2026

Target Date	Activity/Process	Responsibility
12/1/2025	Budget process outlined to Principals and Directors	CFO
1/1/2026	Campus and department allocations to be distributed	CFO
2/2026	Start the process for estimated enrollment	CFO
2/2026	Review DISD's staffing levels and funding	Principals, Directors, HR, Superintendent and CFO
2/2026-3/6/2026	Budget meetings with Principals and Directors	Principals, Directors, Superintendent and CFO
3/17/2026 – 3/27/2026	Budget preparation and entry	CFO
3/30-4/2/2026	First Budget Workshop-Set district fiscal priorities	CFO, Superintendent, School Board
4/13/2026	Beginning of Special Program and Support Service budget preparation	Special program and Support departments
5/1/2026	Receive Preliminary Values/Review of Budget	CFO and Superintendent
5/4-7/2026	Second Budget Workshop-Review salary increase options	CFO, Superintendent, School Board
5/21/2026	Final Review of Total Budget	CFO and Superintendent
5/27/2026	Publication of notice of budget & proposed tax rate	CFO
6/1/2026	Third Budget Workshop, if needed	CFO, Superintendent, School Board
6/15/2026	Official Public Budget Hearing, Official Budget Adoption	School Board

Budgeting a Plan Development Process Flowchart



Budgeting Procedures

- **Classroom Teachers/Department Staff**
- Budget meetings with classroom teachers and department staff begin in **January**. Teachers give input on their classroom and grade level needs.

- **Grade Level/Academic Teams/Site-Based Decision making/Department Supervisors**
- Review at the campus/department as a whole and categorize any needs:
 - *Facilities*
 - *Maintenance*
 - *Special Projects*
-
- Review campus/department staffing:
 - *Is the campus/department over or under staffed?*
 - *Review student enrollment numbers and trends, including special populations.*
 - *Are there any new positions required?*
 - *Will open positions be filled or can be absolved?*

- **Campus Principals/Department Administrators**
- Review current budget:
 - *Were the required state allotment percentages spent?*
 - *What accounts were underspent?*
 - *What accounts were overspent?*
 - *Are new accounts needed?*

- Prepare a new budget “wish list” for budget meeting including:
 - *Estimated amounts for new requests and projects*
 - *Staffing requests*
 - *Budget amounts by line*

- Set up **February** budget meeting with CFO and Superintendent.

Budgeting Procedures continued

■ District-wide Budgetary Analysis

- The CFO and Superintendent meet to prioritize districtwide initiatives.

- The CFO presents salary increase scenarios to Superintendent by the end of **March**. Staffing is reviewed.

- The CFO runs the summary of finance template with estimated property value growth and ADA estimates.

- The CFO compiles the first budget run with all campus and department requests by the end of March.

- CFO and Superintendent review first budget run.

- CFO and Superintendent begin prioritizing campus and department needs.

- Preliminary property values are received by end of **May**. Revenue estimate is recalculated accordingly and budget reviewed and reprioritized.

■ Public Hearings

- First of three public budget workshops with the Board of Trustees is held. The budget is presented with a menu of options for the Board to prioritize with a goal of a balanced budget. The Board decides on projects and expenses being put in three categories:
 - *Remains in budget*
 - *Moved to a later date with a budget amendment and taken out of fund balance*
 - *Removal from current budget consideration*

Budgeting Procedures continued

- Budget is revised with Board recommendations including salary increases.

- CFO reviews budget to ensure financial legal requirements are met including:
 - - *FIRST indicators*
 - *State allotment spending requirements*
 - *Special Ed Maintenance of Effort*
 - *other*

- Second of three budget public budget hearings is held. Budget is presented with recommendations.

- Budget is revised and finalized. Third public budget meeting is held, if necessary.

- **Board of Trustees Officially Adopt the Budget**
- Budget is adopted by **June 19** at the function level.

- New funds are open the first week of July.

- Certified property values are received in August. The Board adopts the tax rate based off the values. Adjustments to budgeted revenue and expenses may be required.

- Budget reallocations within function can be requested via an expense reclassification form submitted to CFO.

- Budget reallocations outside of function must be taken to the Board for approval.

FUND

- The Fund identifier is the first sequence of numbers in the following sequence of numbers
 - 199-XX-XXXX-XX-XXX-X-XX-X-XX

ACCOUNT CODE

- The **FUNCTION** is the second field of the account sequence
 - XXX-**11**-XXXX-XX-XXX-X-XX-X-XX
- The list of Function's are:
 - 11 – *Instructional (for students)*
 - 12 – *Library & Media Services*
 - 13 – *Staff development*
 - 23 – *Campus Administration (office)*
 - 31 – *Counseling Services*
 - 33 – *Health Services*
 - 36 – *Co/Extra-curricular*
 - 61 – *Community Services*

ACCOUNT CODE

- The **OBJECT** is the third field of the account sequence
 - XXX-XX-**6239**-XX-XXX-X-XX-X-XX
- The list of Objects are:
 - 6100's - *Payroll*
 - 6200's - *Contracted Services*
 - 6219 - Professional Services
 - 6239 - ESC Services
 - 6249 - Repairs & Maintenance
 - 6291 - Consulting Services
 - 6300's - *Supplies*
 - 6329 - Reading Materials
 - 6395 - Tangible Supplies (per inventory procedures)
 - 6399 - General Instructional Supplies (not food)
 - 6400's - *Travel & Misc. Expenditures*
 - 6411 - Staff Travel (includes registration)
 - 6412 - Student Travel
 - 6499 - Miscellaneous Expenditures (food)
 - 6600's - *Equipment & Capital over \$5,000*

ACCOUNT CODE

- *To identify the different organizations you will look at the fifth field of the following sequence of numbers*
 - *XXX-XX-XXXX-XX-002-X-XX-X-XX*
- *The organization is your campus number that you have been given for budget as well as PEIMS.*

- *001 High School*
- *004 DAEP*
- *041 Middle School*
- *101 Elementary*
- *102 Intermediate*

ACCOUNT CODE

- *To identify the different program allocations you will utilize the program intent number which will be found in the seventh field of the following sequence of numbers*
 - *XXX-XX-XXXX-XX-XXX-X-21-X-XX*
- *The following are the program intent codes and the associated program*
 - 11 – Basic Educational Services
 - 21 – Gifted and Talented
 - 22 – Career and Technology
 - 23 – Special Education
 - 25 – Bilingual
 - 30 – State Compensatory Education
 - 32 – Pre K
 - 33 – Pre K SPED
 - 36 – Early Education (K-3)
 - 37 – Dyslexia
 - 38 – CCMR
 - 43 – Dyslexia SPED
 - These allotments having a minimum spending requirement.



Devine Independent School District Board of Trustees Agenda Document

Meeting Date: February 16, 2026

Agenda Item: Resolution on school prayer

Background Information:

SB 11 from the 89th Legislative Session adds Texas Education Code section 25.0823, which allows school boards to designate time each school day at every campus for students and employees to pray and read the Bible or other religious texts. The bill requires that within six months of the effective date (by March 1, 2026), each district's board must take a record vote either to establish the daily prayer time and reading of religious texts by adopting the resolution set out in the new statute or to decline to establish the daily prayer time.

Administrative Consideration:

On or before March 1, 2026, each district's board must take a record vote on whether to adopt the statutory resolution.

The SB11 version of the resolution, will require schools to track consent forms, designate non-instructional time for prayer, identify private prayer spaces, and ensure non-participating students are not coerced to pray.

Budgetary Consideration:

None.

Supporting Documents:

SB11 Resolution
Texas Faith Leaders Letter
Alternate Resolution

Recommendation:

Take a record vote to decline to adopt the SB11 version of the resolution.
Vote to adopt an alternative resolution that affirms students' right to prayer and religious study under existing law and respects the religious diversity within public schools.

Respectfully Submitted by:

Dr. Todd Grandjean
Superintendent of Schools

**Resolution Regarding Senate Bill 11
Period of Prayer and Reading of the Bible or Other Religious Text**

The _____ ISD shall adopt a policy requiring every campus of _____ ISD to provide a period of prayer and reading of the Bible or other religious text as provided by Education Code 25.0823.

Adopted this ____ (*date*) day of _____ (*month*), _____ (*year*), by the Board.

Board President's signature: _____

Board Secretary's signature: _____

To: Texas School Board Members
From: Texas Faith Leaders
Re: State-Organized Prayer in Texas Schools (SB11)
Date: January 8, 2026

Dear Superintendents and School Board Trustees,

We, the undersigned faith leaders, support religious liberty and the right of students to pray at school without government interference. Public education is both a place where students of all faiths come together to learn and a vital institution that prepares students to live in a society of many religions.

We believe in the value of religious instruction. We also understand that the responsibility for religious instruction lies with students, their families, and their local faith communities—not with public schools, and not organized or directed by the state.

By requiring school boards to vote on a state-designated time for prayer and religious text study, Texas' state-organized prayer in school law, SB11, threatens to drive a wedge into public school communities and create unnecessary administrative burdens. Existing laws protect Texas public school students' right to pray and read religious texts at school without government interference—and without the administrative burden that SB11 places on schools and parents.

If SB11's prayer policy is approved, schools will be required to track consent forms, designate non-instructional time for prayer, identify private prayer spaces, and ensure non-participating students are not coerced to pray. Requiring families to opt into a system that already protects their children's religious rights at school distracts from a school's mission of educating children. Students who do not opt in might be bullied and ostracized, and students may feel pressure to opt in to gain favor and time with teachers or coaches. State-sponsored prayer time will also cause division among students based on their religious beliefs.

Instead of approving SB11's misguided state-organized prayer policy, we urge you to pass the attached resolution as an alternative for approval by the School Board. It affirms students' right to prayer and religious study under existing law and respects the religious diversity within public schools. We ask you to support religious freedom in our schools and reject SB11's state-organized prayer policy.

We are available for questions and testimony if we can be helpful in these efforts.

Thank you,

Undersigned Texas Faith Leaders



RESOLUTION

Affirming Our Constitutional and Legal Right to Choose to Pray in School

WHEREAS, the First Amendment to the U.S. Constitution protects students' religious freedom in public school. Specifically, the Establishment Clause ensures that the government cannot favor any particular religious belief or religion over non-belief, and the Free Exercise Clause ensures that individuals have the right to practice their religious beliefs, free from government interference; and

WHEREAS, Article I, § 6 of the Texas Constitution guarantees the “separation of church and state” and embodies the principle that “religion is a matter of private conscience with which the state . . . is forbidden to interfere.” *Watts v. Watts*, 563 S.W.2d 314, 317 (Tex. Civ. App. 1978), writ refused NRE (July 5, 1978), disapp'd on other grounds by *Jones v. Cable*, 626 S.W.2d 734 (Tex. 1981); and

WHEREAS, the Texas Religious Freedom Restoration Act, Tex. Civ. Prac. & Rem. Code § 110.003, prohibits school districts and other government entities from “substantially burden[ing] a person's free exercise of religion”; and

WHEREAS, the Texas Education Code § 25.901 affirms that “[a] public school student has an absolute right to individually, voluntarily, and silently pray or meditate in school in a manner that does not disrupt the instructional or other activities of the school. A person may not require or coerce a student to engage in or refrain from such prayer or meditation during any school activity”; and

WHEREAS, the Texas Education Code § 25.082(d) establishes a school district's ability to institute a period of silence during which students may choose to “reflect, pray, meditate, or engage in any other silent activity that is not likely to interfere with or distract another student”;

NOW, LET IT BE HEREBY RESOLVED

THAT the Devine ISD Board of Trustees, in consideration of the laws and policies recited above, is committed to cultivating and maintaining a respectful school environment for students and teachers of any or no religious background, and supports the rights of individuals to pray in its schools.

Adopted this 16th day of February, 2026, by the Board of Trustees.

Presiding Officer's Signature

Board Secretary's Signature



Devine Independent School District Board of Trustees Agenda Document

Meeting Date: 02/16/2026

Agenda Item: Middle School gym floor

Background Information:

CV — Facilities Construction

A district may not enter into a contract to purchase construction-related goods or services through a purchasing cooperative under Government Code Chapter 791 in an amount greater than \$50,000 unless a person designated by the district certifies in writing that:

1. The project for which the construction-related goods or services are being procured does not require the preparation of plans and specifications under Occupation Code Chapter 1001 or 1051; or
2. The plans and specifications required under Occupation Code Chapters 1001 and 1051 have been prepared.

"Purchasing cooperative" means a group purchasing organization that governmental entities join as members and the managing entity of which receives fees from members or vendors.

Gov't Code 791.011(j)

Administrative Consideration:

Middle school gym floor damaged due to water leak.

Budgetary Consideration:

Fund Balance

Supporting Documents:

Quotes attached

Recommendation:

The Operations Department recommends repair or replacement of the gym floor

Respectfully Submitted by:

Kandy Stein

Director of Operations/Custodial Services

Approved by:

Dr. Todd Grandjean

Superintendent of Schools



Quality Hardwood Floors, Inc. DBA:

QHF SPORTS

2011 Clovis Barker Rd.
San Marcos, TX 78666
Ph: (512) 754-9077
Fax: (512) 754-0919
QHFsports.com



Date: 1/8/26

Buyboard Contract No. 737-24

Organization: Devine ISD
Attn: Kandy Stein
Phone: 210-416-1527
Email: kandy.stein@devineisd.org

Scope of Work:

Description	Price
Devine JH Gym	
Replace a 43' x 28' section of damaged wood flooring (25/32" x 2-1/4" 2 nd & better maple) and subfloor (2 layers of 1/2" plywood with 3/8" pads). Sand entire floor with coarse, medium and fine grit sandpaper. Apply sealer. Paint gamel lines, base line lettering and one center logo. Apply finish coats to entire floor.	\$51,200.00

Exclusions

- Bleacher work (repairs, removal, disposal).
- Testing of asbestos or lead containing materials before removal for flooring/subfloor in facilities over 30 years old.
- Repairs to concrete slab to meet MFMA industry standard of 1/8" in a 10' radius. Floating and grinding can be quoted separately after scope is known.
- Electrical hookup and breakers for sanding equipment. See Customer Requirements below.
- Weekend work (Saturdays and Sundays) unless approved before work is scheduled.
- Portable toilets
- Design work for logos and artwork. See Customer Requirements below.
- Payment & Performance bonds (Add 3% to total amount if this is required.)
- Conveyance of extra materials to the client at the conclusion of repair and installation projects. All extra material is the property of Quality Hardwood Floors, Inc.

Customer Requirements

Floor Repairs, Installations, Replacements

- Ensure all roof work is completed, including flashing, guttering and exterior drainage. The building must be permanently enclosed and weather-tight. All block, brick, masonry, tile, marble and/or terrazzo work must be complete, cured and dried. All interior painting must be completed and dry. The permanent light, heating, electrical and ventilation systems must be operating. All overhead work must be complete, and the floor area must be free of obstructions. All backstops and sports accessory fixtures must be installed.
- **Ensure that HVAC is set to maintain humidity between 35 and 50 percent always, including long summer and winter breaks. Humidity fluctuations of more than 15% may cause finish and paint to peel, boards to warp or gap, and void warranty.**
- Ensure that the concrete slab meets the MFMA industry standard of 1/8" in a 10' radius. Floating and grinding can be quoted separately after scope is known.

Floor Sanding

- **Ensure that HVAC is set to maintain humidity between 35 and 50 percent always, including long summer and winter breaks. Humidity fluctuations of more than 15% may cause finish and paint to peel, boards to warp or gap, and void warranty.**
- **An electrician must be provided to connect our electrical cord pigtails to a 100-amp breaker, 220-volt, 3 phase panel no farther than 100 feet from floor to be sanded. Add \$400 per day for generator rental if power is not available.**
- Submit artwork and lettering with appropriate size, fonts or any other details in vector images (.eps or .ai) to dan@QHFsports.com. We will provide gym floor renderings to show approximate colors and approximate locations of artwork and lettering by importing the designs that are sent to us. Any design work such as



Quality Hardwood Floors, Inc. DBA:

QHF SPORTS

2011 Clovis Barker Rd.
San Marcos, TX 78666
Ph: (512) 754-9077
Fax: (512) 754-0919
QHFsports.com

Page 2 of 2



creating logos and artwork from scratch or editing existing logos will be an additional \$60 per hour. Any renderings requiring more than 2 revisions will be an additional \$40 per layout.

- For customers that require specific colors, submit Pantone PMS number for each color at least 4 weeks before work begins.
- The customer is aware that sanding of wood floors will create fine dust in the air and the owner has taken such precautions as he/she feels adequate to protect the surrounding area from such dust. Quality Hardwood Floors, Inc. shall not be held responsible for hanging plastic or provide dust containment other than the industry standard dust bags attached to the equipment. Quality Harwood Floors, Inc. shall not be held responsible for any damage resulting from the dust nor shall they be responsible to clean up such dust.
- **Ensure that the finished product can cure untouched for 72 hours after it is applied. If the finish is not allowed to cure properly there is a high probability of scratching and/or scuffing.**

Scheduling

- Submit desired schedule in writing to justin@QHFsports.com at least 3 weeks prior to start date. Due to high volume of work during the summer months, please allow a 3 to 4 day time window around the desired start date. **We will not reserve start dates until purchase order is received.**

1 Year Limited Warranty

- HVAC must be set to maintain humidity between 35 and 50 percent. Humidity fluctuations of more than 15% may cause finish and paint to peel, boards to warp or gap, and void warranty.
- Excessive moisture, abusive activities, or excessive weight due to lifts may void warranty.
- Excessive loading like those resulting from the use of high point load scissor lifts can lead to surface degradation and/or weaken structural components leading to system failure. Always use multi-layer protection when loading a flooring system with any size lift to protect the integrity of the system and quality of the surface finish.
- Cleaning chemicals that are not specifically for use on gym floors or not compatible with the applied finish will void warranty.

Proposal is valid for (30) days. After that time, we will need to reevaluate the scope of work to verify conditions have not changed.

***To accept this proposal, please email purchase order to justin@QHFsports.com.**

Thank you for giving us this opportunity. If you have any questions or would like to schedule the work, please contact us at 512-754-9077.

Regards,

Craig Phillips
QHF Sports



Quality Hardwood Floors, Inc. DBA:

QHF SPORTS

2011 Clovis Barker Rd.
San Marcos, TX 78666
Ph: (512) 754-9077
Fax: (512) 754-0919
QHFsports.com

Page 1 of 3



Date: 1/8/26

Buyboard Contract No. 737-24

Organization: Devine ISD
Attn: Kandy Stein
Phone: 210-416-1527
Email: kandy.stein@devineisd.org

Devine Middle School Gym Floor Replacement (7,680 sq. ft.)

Includes:

- Removal of existing flooring and subfloor
- Dumpsters and/or haul-off of existing flooring and subfloor
- FOB of materials to jobsite
- Connor DuraCushion I subfloor system consisting of 2 layers of 1/2" plywood and 3/8" cushion pads placed on 12" centers
- 25/32" x 2-1/4" maple 2nd& better grade flooring nailed to subfloor using 2" cleat nails
- Sand floor and apply 2 coats of Advantage sealer
- Paint game lines, baseline lettering and 15' logo (no more than 2 colors).
- Apply 2 coats of Advantage Sport Poly Oil Base Finish.
- 5 oversized volleyball cover plates
- 4"x3" black rubber vented cove base around perimeter
- New aluminum thresholds at doorways
- Payment and performance bonds
- Move bleachers as necessary for floor installation

Price = \$156,800.00

Excludes:

- Sales tax.
- Concrete slab or other substrate leveling, grinding, repairing to bring into tolerance per manufacturer's specifications
- Bleacher removing, repairs or replacement
- Moisture remediation
- Testing or abatement of asbestos, lead or other hazardous materials
- Protection of finished product
- Protection of adjacent surfaces
- Electrical power of 220 volts, 3 phase with 80 or 100 amp breaker to power our sanding equipment. Connection of the pigtail cables to the power box by a qualified electrician. There will be an extra charge if we need to furnish a generator.
- Volleyball sleeve installation
- Electrical box installation
- Graphic design services
- Gym equipment and accessories



Quality Hardwood Floors, Inc. DBA:

QHF SPORTS

2011 Clovis Barker Rd.
San Marcos, TX 78666
Ph: (512) 754-9077
Fax: (512) 754-0919
QHFsports.com

Page 2 of 3



- Maintaining the Relative Humidity and Temperature per the manufacturer's recommendation during and after the installation for at least 1 year. Failure to maintain the proper conditions will void the warranty.
- Water base finishes.
- Conveyance of extra materials to the client at the conclusion of repair and installation projects. All extra material is the property of Quality Hardwood Floors, Inc.

*****Extremely Important*****

Wood flooring is a hygroscopic material which absorbs or releases moisture until it is at equilibrium with the surrounding atmosphere. The Maple Flooring Manufacturers Association (MFMA) recommends that the facility's environment be stable when the flooring materials arrive. The temperature should be between 55 and 75 degrees F and indoor relative humidity between 35 and 50 percent. The maple flooring shall be stored in the area where it will be installed for a period of time so that the measured flooring moisture content is in equilibrium with the indoor atmosphere. The time needed to reach equilibrium is dependent on the environmental conditions of the region, existing HVAC equipment, relative humidity controls and indoor atmosphere. Excessive shrinkage and/or expansion may occur with indoor relative humidity variations in excess of 15 percent. The HVAC should never be shut down (including weekends and summer breaks) during the installation and any time after installation. A properly operated HVAC will reduce the chances of excessive expansion and contraction of the flooring boards that cause problems such as gaping, cupping, buckling, paint and finish peeling. The acclimation process may take days to several weeks to reach the equilibrium moisture content. Therefore, if the Owner decides there is not enough time in the construction schedule, the owner may need to make other arrangements or sign a waiver that acknowledges that Quality Hardwood Floors, Inc. will not be held liable for any damage resulting from fastening the floor before proper acclimation. Fastening the floor before proper acclimation will void warranty.

Scheduling

Submit desired schedule in writing to justin@QHFsports.com at least 3 weeks prior to start date. Due to high volume of work during the summer months, please allow a 3 to 4 day time window around the desired start date. We will not reserve start dates until purchase order is received. If purchase order is not received with 60 days of proposal date, price is subject to change. This price is based on working Monday through Friday, 8 hours per day. No overtime work is included in this price. If the customer requires overtime or weekend work to meet scheduling demands, we will need to be notified immediately. There will be additional costs associated with overtime and weekend work. This proposal will be made a part of any contract or purchase order supplied by the Owner.

1 Year Limited Warranty

- HVAC must be set to maintain humidity between 35 and 50 percent. Humidity fluctuations of more than 15% may cause finish and paint to peel, boards to warp or gap, and void warranty.
- Excessive moisture, abusive activities, or excessive weight due to lifts may void warranty.



Quality Hardwood Floors, Inc. DBA:

QHF SPORTS

2011 Clovis Barker Rd.
San Marcos, TX 78666
Ph: (512) 754-9077
Fax: (512) 754-0919
QHFsports.com

Page 3 of 3



- Excessive loading like those resulting from the use of high point load scissor lifts can lead to surface degradation and/or weaken structural components leading to system failure. Always use multi-layer protection when loading a flooring system with any size lift to protect the integrity of the system and quality of the surface finish.
- Owner demanding that flooring be nailed prior to proper acclimation of flooring/subfloor due to time constraints.

Proposal is valid for (30) days. After that time, we will need to reevaluate the scope of work to verify conditions have not changed.

Thank you for giving us this opportunity. If you have any questions or would like to schedule the work, please contact us at 512-754-9077.

Regards,

Craig Phillips
QHF Sports



Devine Independent School District Board of Trustees Agenda Document

Meeting Date: 02/16/2026

Agenda Item: Approve JOC Contracts for HVAC and Kitchen Repairs

Background Information:

Due to the large numbers of HVAC repairs and kitchen repairs we went out for bids.

Administrative Consideration:

CVF — Facilities Construction: Job Order Contracts

"Job order contracting" is a procurement method used for maintenance, repair, alteration, renovation, remediation, or minor construction of a facility when the work is of a recurring nature but the delivery times, type, and quantities of work required are indefinite. Gov't Code 2269.401

Budgetary Consideration:

Monetary and Time Savings

Supporting Documents:

Contracts Attached

Recommendation:

The Operations Department recommends approving both contracts.

Respectfully Submitted by:

Kandy Stein
Director of Operations/Custodial Services

Approved by:

Dr. Todd Grandjean
Superintendent of Schools