

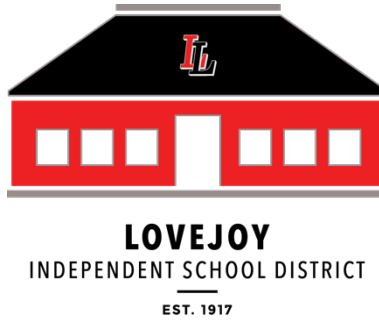
Board Workshop  
Tuesday, May 9, 2023 8:30 AM

Carrie L. Lovejoy Child Development Center:  
Library  
256 Country Club Road  
Allen, TX 75002

## Agenda

1. Call to Order  
**Presenter:** Barrett Owens, President
2. Roll Call and Announcement by President that a quorum is present, that the meeting has been duly called, and that notice of the meeting has been duly posted for time and manner as required by law  
**Presenter:** Barrett Owens, President
3. Closed Session, Gov't. Code 551.071-551.084. The Board May Retire into Closed Session in Accordance with the Texas Open Meetings Act  
**Presenter:** Barrett Owens, President
  - 3.A. 551-071 For the purpose of a private consultation with its attorney only when it seeks the attorney's advice about pending or contemplated litigation or a settlement offer or on a matter in which the duty of the attorney to the Board under the Texas Disciplinary Rules of Professional Conduct of the State Bar of Texas clearly conflicts with the requirement for open meetings.
    - 3.A.1. Consideration and deliberation regarding action related to the identified term contract employee at the end the 2023-2024 school year.
  - 3.B. 551-072 For the purpose of deliberating the purchase, exchange, lease, or value of real property if deliberation in an open meeting would have a detrimental effect on the position of the District in negotiations with a third person.
  - 3.C. 551-073 For the purpose of deliberating a negotiated contract for a prospective gift donation to the District if deliberation in an open meeting would have a detrimental effect on the Board's position in negotiations with a third person.
  - 3.D. 551-074 For the purpose of deliberating the appointment, employment, evaluation, reassignment, duties, discipline, or dismissal of a public officer or employee or to hear a complaint or charge against an officer or employee. However, the Board may not conduct a closed meeting for these purposes if the officer or employee who is the subject of the deliberation or hearing requests a public hearing.
    - 3.D.1. Evaluation of employees.
    - 3.D.2. Board Self-Assessment.
  - 3.E. 551-076 For the purpose of deliberating the deployment, or specific occasions for implementation, of security personnel, devices or security audits.
    - 3.E.1. Security Personnel.
  - 3.F. 551-082 For the purpose of deliberating in a case involving discipline of a public school child, or in which a complaint or charge is brought against a District employee by another employee and the complaint or charge directly results in the need for a hearing. However, the Board may not conduct a closed meeting for this purpose if the employee against whom the complaint or charge is brought makes a written request for an open hearing.

- 3.G. 551-0821 For the purpose of deliberating a matter regarding a student if personally identifiable information about the student will necessarily be revealed by the deliberation. This exception does not apply if an open meeting about the matter is requested in writing by a parent or guardian of the student or by the student if the student has attained 18 years of age.
- 3.H. 551-083 For the purpose of discussing or deliberating the standards, guidelines, terms or conditions the Board will follow, or will instruct its representative to follow, in consultation with representatives of employee groups.
- 3.I. 551-084 For the purpose of excluding a witness from a hearing during the examination of another witness.
- 4. Return to Open Meeting for Action, If Necessary, On Matters Discussed In Closed Session  
**Presenter:** Barrett Owens, President
- 5. Public Comments Related to May 9, 2023 Agenda Items  
**Presenter:** Rodricka Taylor, Coordinator for the Superintendent and Board Services



# Public Comment Procedures

## Workshops and Special Meetings

### Submitting for Public Comment

Any individual seeking to speak during the public comment session of a workshop or special meeting must complete and submit the public comment card by no later than 15 minutes prior to the designated start time provided on the meeting notice.

Public comment cards must be completed in their entirety with accurate and truthful information and must designate the specific agenda item.

The Board will provide speakers that submit a public comment card on an agenda item the opportunity to speak prior to the Board's consideration of the item in the order in which they were received.

Public comment cards are only applicable to the meeting in which they are completed and submitted by the established deadline.

Each individual gets one opportunity per meeting to share their comments with the Board of Trustees, not multiple opportunities per individual agenda items.

If a speaker is not present when his/her name is called, the speaker forfeits the opportunity to speak at that meeting.

The comments made by speakers at public comment reflect the opinions solely of the speaker and not the Board of Trustees as a governing body or the District.

### Order of Agenda and Limitations

The Board reserves the right to change the order of the agenda items on the notice of meeting and / or defer agenda items until a later date.

Each speaker will be provided up to three minutes to address the Board of Trustees unless more than 10 speakers sign up to speak, in which case, the presiding officer reserves the right to reduce the time allotted to each speaker to no less than one minute per speaker. (Board Policy BED (LOCAL)).

If at any time, in the opinion of the presiding officer, the individual speaker is attempting to address a non-agenda item in the agenda item public comment period, the presiding officer or designee may stop the speaker.

### **Disruptive Behavior**

Disruptive behavior will not be tolerated in the meeting. If after the provision of a single warning, the disruptive behavior continues, the disruptive individual may be escorted out of the meeting by District officials and/or law enforcement.

It is a criminal offense for a person, with intent to prevent or disrupt a lawful meeting, to substantially obstruct or interfere with the ordinary conduct of a meeting by physical action or verbal utterance.

Conduct defined by Texas Penal Code §42.01 and Board Policies BED (LEGAL) and BED (LOCAL).

Failure to yield the podium at the conclusion of the time allotted to a speaker at public comment constitutes a disruption and will be addressed accordingly.

Comments made to the Board of Trustees by meeting attendees and/or speakers outside of the designated public comment periods during a meeting constitute a disruption.

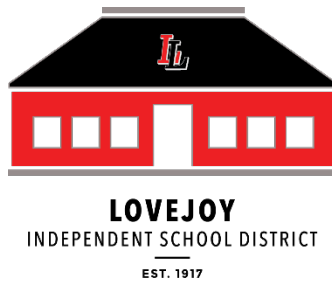
### **Board's Response to Public Comment**

Specific factual information or recitation of existing policy may be furnished in response to inquiries, but the Board shall not deliberate or decide regarding any subject that is not included on the agenda posted with notice of the meeting. The Board may also refer a speaker to a staff member in authority over the issue.

For specific complaints or concerns, speakers are encouraged to utilize the District's appropriate grievance procedures and policies set forth in Board Policies FNG (LOCAL), DGBA (LOCAL), and GF (LOCAL).

### **Statement of Non-Discrimination**

The Board does not discriminate against speech on the basis of viewpoint.



## **School Board Public Comments Sign In May 9, 2023**

The Board of Trustees encourages public comment. All public comment at a meeting other than a regularly scheduled meeting should be limited to agenda items posted for the meeting. By signing up to provide public comment at a Board meeting, you are acknowledging and accepting the procedures for public comment available online at [lovejoyisd.net](http://lovejoyisd.net).

Any individual seeking to speak during the public comment session of a regular board meeting must complete and submit the public comment card by no later than 15 minutes prior to the designated start time provided on the meeting notice. Public comment cards must be completed in their entirety with accurate and truthful information and must designate whether the speaker is speaking on a specific agenda item. Failure to designate an agenda item relevant to the speaker's comments will result in the classification of the public comment as a non-agenda item comment, to be heard at a later time in the meeting. Public comment cards are only applicable to the meeting in which they are completed and submitted by the established deadline.

Each individual will have one opportunity per meeting to share their comments with the Board of Trustees, not multiple opportunities per individual agenda items. If a speaker is not present when his/her name is called, the speaker forfeits the opportunity to speak at that meeting. All speakers will be limited to no more than three minutes. The presiding officer reserves the right to reduce the number of minutes per speaker to no less than one minute per speaker in order to maintain effective meeting management. The speakers will be recognized in the order in which each person signs up. If there are more speakers than time allotted for public comment, the amount of time per speaker may be reduced, as determined appropriate by the Board of Trustees. If time does not allow for you to speak at public comment, the Board of Trustees may allot additional time for public comment or defer specific agenda items for review at a subsequent meeting in an effort to allow more public comment, as determined necessary by the Board. This public comment card will not be maintained from one meeting to the next and is only applicable to the meeting on the date in which it was submitted.

If you have a specific concern related to an employee of the District or a specific student issue, you are encouraged to utilize the District's grievance procedures provided in Board Policies DGBA (LOCAL), FNG (LOCAL), and GF (LOCAL) or applicable grievance process. Each grievance procedure allows for an individual to redress grievances with the Board of Trustees. All relevant policies are available online at [lovejoyisd.net](http://lovejoyisd.net).

Disruptive behavior will not be tolerated in the meeting. If after the provision of a single warning, the disruptive behavior continues, the disruptive individual may be escorted out of the meeting by District officials and/or law enforcement. It is a criminal offense for a person, with intent to prevent or disrupt a lawful meeting, to substantially obstruct or interfere with the ordinary conduct of a meeting by physical action or verbal utterance.

The Board of Trustees appreciates your active participation in the school district.

**\*I wish to address the Board about an agenda item on the May 9, 2023 agenda.**

**I wish to speak about agenda item # \_\_\_\_\_ which is titled:**

---

**\*I wish to participate in the open forum by speaking about the following topic:**

---

**First and Last Name:**

---

**Address:**

---

**Phone:**

---

**Organization (if applicable):**

---

**Printed Name & Signature (Acknowledging you have read the procedures above)**

**Print:**

**Signature:**

**Date:**

---

6. Consideration and Possible Action Regarding the Contract of the Identified Two-year Contract Employee at the end of the 2023-2024 School Year  
**Presenter:** Anna Koenig, Executive Director of Human Resources and Communications
7. Presentation: Proposed Legislation and Lovejoy Scholars  
**Presenter:** Thomas Willman, Chief Financial Officer and Anna Koenig, Executive Director of Human Resources and Communications

# Proposed Legislation & Lovejoy Scholars

---

**THOMAS WILLMAN**

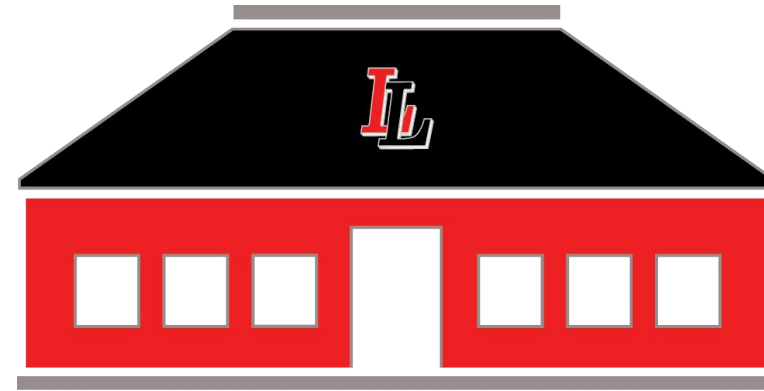
Chief Financial Officer

**ANNA KOENIG**

Executive Director of Human Resources  
and Communication

**May 9, 2023**

Board Workshop



**LOVEJOY**  
INDEPENDENT SCHOOL DISTRICT  

---

**EST. 1917**

# Why does the Texas 88th Legislative Session matter to Lovejoy ISD?

The Texas Constitution mandates that the Legislature meet biennially, every two years, for a 140-day session (last day of the session: **May 29**). Thousands of bills are filed with only a handful making their way through the process to become law. The only bill required to come out of the session is the biennial budget, which includes state funding for public education.

**Over 1,000 + education bills  
have been filed this session.**

# What resources are available to assist with following the Texas Legislature?

You can read and track bills, watch live floor sessions and committee meetings, and view archived sessions and public hearings at the following links:

- [Texas Legislature Online](#)
- [Texas House of Representatives](#)
- [Texas Senate](#)

Lovejoy ISD has the following resources available on our [88th Legislative Session Web-Site](#) found at this [link](#).

- Legislative Priorities
- Contact Information for our State Legislators
- Texas House and Senate Education Committee Members
- Board Legislative Subcommittee Updates

# What proposed legislation would eliminate public school districts' ability to charge tuition?

## **SB 418** : Senator Angela Paxton

- Eliminates Tuition (This would result in an approximately -\$1 mm impact to Lovejoy ISD.)
- Mandates Inter-District and Intra-District Transfers to Capacity
- Acceptance by Lottery with Priority Categories

## **HB 4148** : Representative Harold Dutton

- Eliminates Tuition (This would result in an approximately -\$1 mm impact to Lovejoy ISD.)
- Mandates Inter-District and Intra-District Transfers to Capacity
- Acceptance by Lottery with Priority Categories

## **SB 8** : Senator Charles Creighton

- Eliminates Tuition (This would result in an approximately -\$1 mm impact to Lovejoy ISD.)
- Acceptance by Lottery with Priority Categories

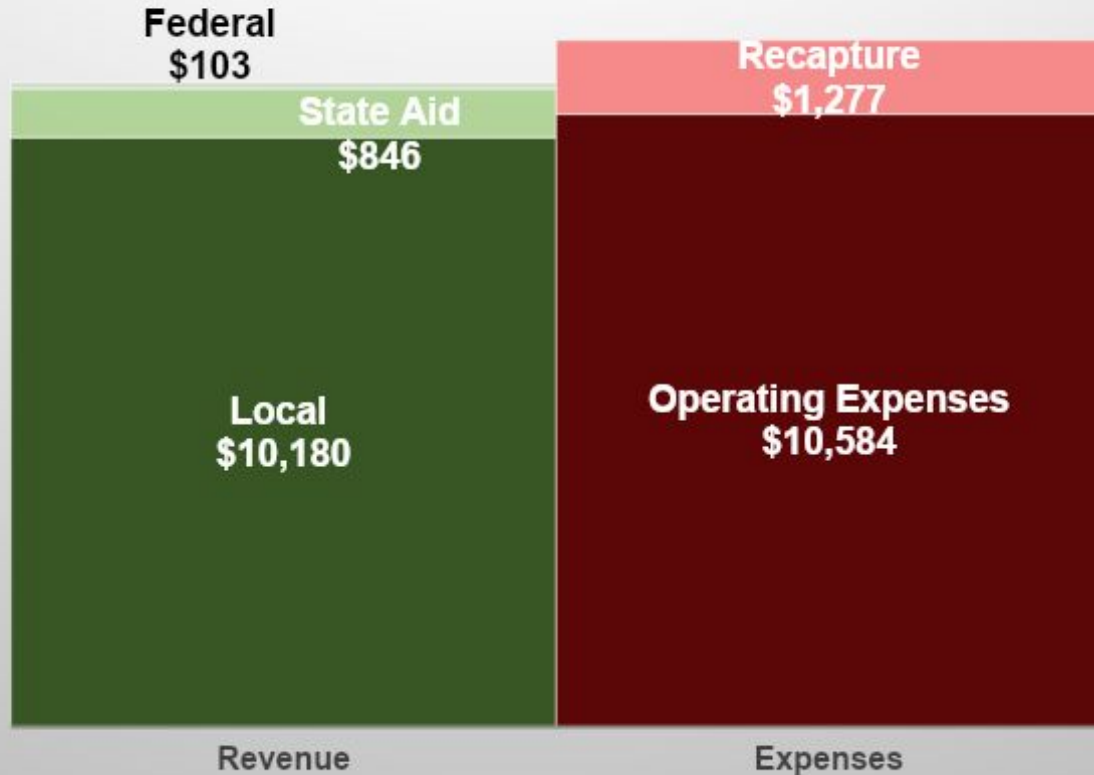
# Why are public school districts currently able to charge tuition for transfer students?

Current Statute: Sec.25.038.

## **TUITION FEE FOR TRANSFER STUDENTS**

The receiving school district may charge a tuition fee to the extent that the **district's actual expenditure per student** in average daily attendance, as determined by its board of trustees, **exceeds the sum the district benefits from state aid sources** as provided by Section **25.037**.

# Lovejoy ISD M&O Cost per student to Educate (Residents only)



The 2023-2024 anticipated cost per student breakdown is:

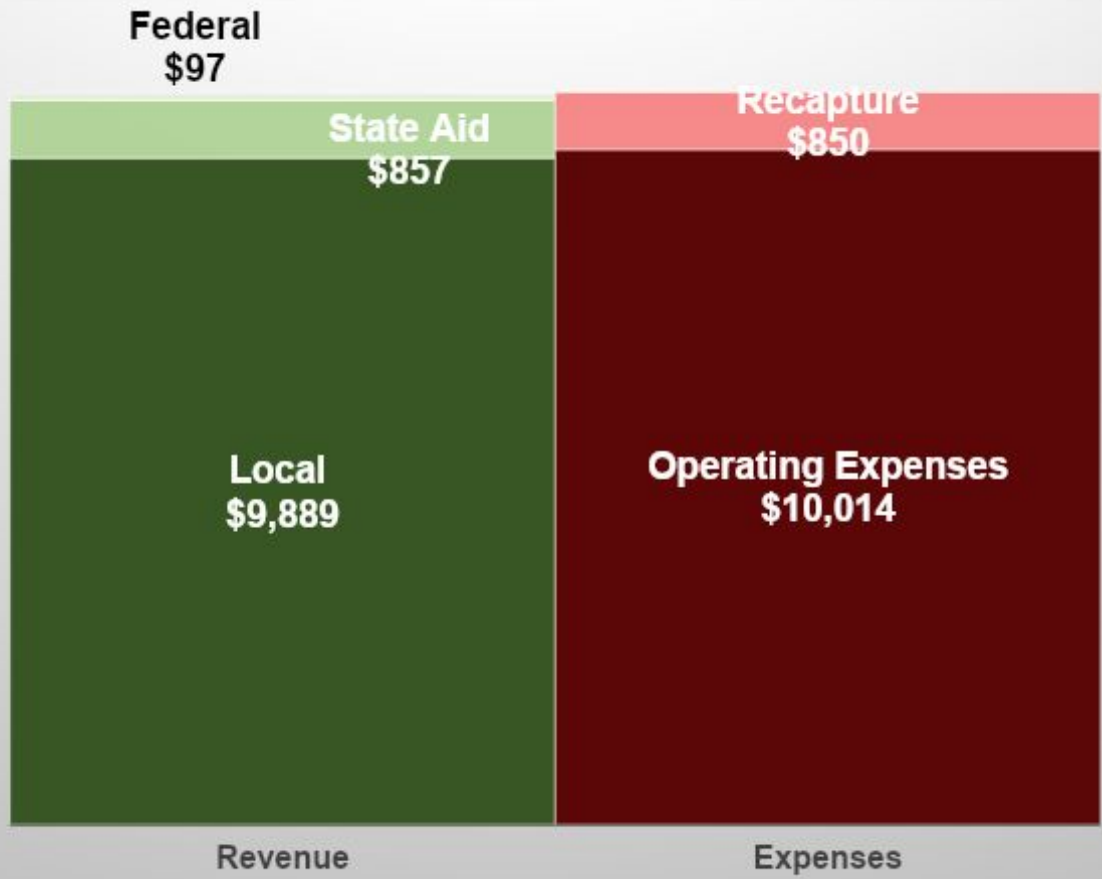
- Lovejoy ISD will expend approximately **\$11,861** per student in average daily attendance without the Lovejoy Scholar Program.
- Lovejoy ISD taxpayers will directly fund **85.8%** of the cost to educate each student.
- State aid will fund **7.1%** of the cost to educate each student.
- Federal funding and fund balance will make up the remaining **7.1%** of the cost to educate each student.

- 
- Lovejoy ISD taxpayers directly account for **91.5%** of Lovejoy ISD's overall revenue.
  - Governmental funding (state aid and federal) represents **8.5%** of Lovejoy ISD's overall revenue.

# Lovejoy ISD M&O Revenue per student to Educate (Residents only)

	Sources			Sources		
	ADA Formula	Local Funding	State Aid	ADA Formula	Local Funding	State Aid
ADA	3,711.0	\$35,626,735	\$3,139,248			
General Setting	\$22,860,040	\$21,547,057	\$1,312,983	\$6,160	\$5,806	\$354
Special Education	\$2,365,563	\$2,229,695	\$135,868	\$637	\$601	\$37
CTE	\$824,039	\$776,709	\$47,329	\$222	\$209	\$13
Small and Mid Size	\$880,059	\$829,512	\$50,547	\$237	\$224	\$14
Comp Ed	\$231,492	\$218,196	\$13,296	\$62	\$59	\$4
College and Career Rea	\$625,227	\$589,316	\$35,910	\$168	\$159	\$10
Gifted and Talented	\$80,010	\$75,415	\$4,595	\$22	\$20	\$1
School Safety	\$36,071	\$34,000	\$2,072	\$10	\$9	\$1
Early Education	\$25,674	\$24,199	\$1,475	\$7	\$7	\$0
Bilingual Education	\$31,030	\$29,248	\$1,782	\$8	\$8	\$0
Transportation	\$185,436	\$174,785	\$10,651	\$50	\$47	\$3
<b>TIER I Funding</b>	<b>\$28,144,641</b>	<b>\$26,528,133</b>	<b>\$1,616,508</b>	<b>\$7,584</b>	<b>\$7,148</b>	<b>\$436</b>
TIER II Funding (Golder	\$5,881,346	\$4,358,606	\$1,522,740	\$1,585	\$1,174	\$410
<b>Total Formula Funding</b>	<b>\$34,025,987</b>	<b>\$30,886,739</b>	<b>\$3,139,248</b>	<b>\$9,169</b>	<b>\$8,323</b>	<b>\$846</b>
Recapture-TIER I		\$3,815,899			\$1,028	
Recapture-TIER II		\$924,097			\$249	
Total Local Tax Collection		\$35,626,735			\$9,600	
Fees (Transportation, LCDC,etc)		\$1,442,635			\$389	
Interest Earnings		\$307,300			\$83	
Foundation Grants and Donations		\$145,075			\$39	
Athletics Gate Revenue		\$256,150			\$69	
Total State Aid		\$3,139,248			\$846	
Federal Revenue		\$381,432			\$103	
<b>Total</b>		<b>\$41,298,575</b>			<b>\$11,129</b>	
Recapture		\$4,739,996			\$1,277	

# Lovejoy ISD M&O Cost per student to educate (Residents + Scholars w/ Tuition)



The 2023-2024 anticipated cost per student break down including Lovejoy scholars:

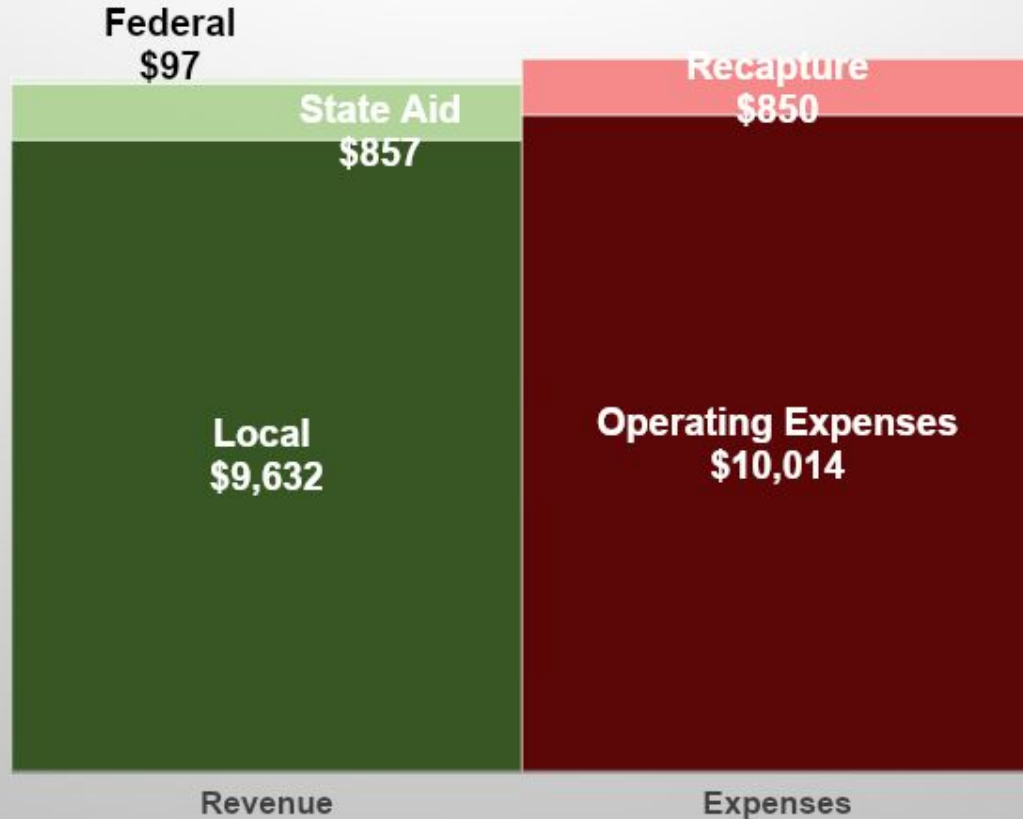
- Lovejoy ISD will expend approximately **\$10,842** per student in average daily attendance with the Lovejoy Scholar Program.
- Lovejoy ISD taxpayers directly fund **88.7%** of the cost to educate each student while scholars contribute **2.3%**.
- State aid will fund **7.8%** of the cost to educate each student.
- Federal funding makes up the remaining **1.2%** of the cost to educate each student.

- 
- Lovejoy ISD taxpayers and scholars directly account for **91%** of Lovejoy ISD's overall revenue.
  - Governmental funding (state aid and federal) represents **9%** of Lovejoy ISD's overall revenue.

# Lovejoy ISD M&O Revenue per student to educate (Residents + Scholars w/ Tuition)

	Sources			Sources		
	ADA Formula	Local Funding	State Aid	ADA Formula	Local Funding	State Aid
ADA	3,922.2	\$35,626,735	\$3,359,463			
General Setting	\$24,160,779	\$22,836,311	\$1,324,468	\$6,160	\$5,822	\$338
Special Education	\$2,356,138	\$2,226,977	\$129,161	\$601	\$568	\$33
CTE	\$867,000	\$819,472	\$47,528	\$221	\$209	\$12
Samll and Mid Size	\$832,193	\$786,573	\$45,620	\$212	\$201	\$12
Comp Ed	\$244,663	\$231,251	\$13,412	\$62	\$59	\$3
College and Career Rea	\$659,332	\$623,188	\$36,144	\$168	\$159	\$9
Gifted and Talented	\$84,563	\$79,927	\$4,636	\$22	\$20	\$1
School Safety	\$38,124	\$36,034	\$2,090	\$10	\$9	\$1
Early Education	\$27,135	\$25,647	\$1,488	\$7	\$7	\$0
Bilingual Education	\$32,795	\$30,997	\$1,798	\$8	\$8	\$0
Transportation	\$185,436	\$175,271	\$10,165	\$47	\$45	\$3
<b>TIER I Funding</b>	<b>\$29,488,157</b>	<b>\$27,871,649</b>	<b>\$1,616,509</b>	<b>\$7,518</b>	<b>\$7,106</b>	<b>\$412</b>
TIER II Funding (Golder	\$6,164,222	\$4,421,268	\$1,742,954	\$1,661	\$1,127	\$470
<b>Total Formula Funding</b>	<b>\$35,652,379</b>	<b>\$32,292,916</b>	<b>\$3,359,463</b>	<b>\$9,179</b>	<b>\$8,233</b>	<b>\$882</b>
Recapture-TIER I		\$2,472,383			\$630	
Recapture-TIER II		\$861,436			\$220	
<b>Total Local Tax Collection</b>		<b>\$35,626,735</b>			<b>\$9,083</b>	
Fees (Transportation, LCDC, etc)		\$1,442,635			\$368	
Interest Earnings		\$307,300			\$78	
Foundation Grants and Donations		\$145,075			\$37	
Athletics Gate Revenue		\$256,150			\$65	
Lovejoy Scholars		\$1,007,100			\$257	
Total State Aid		\$3,359,463			\$857	
Federal Revenue		\$381,432			\$97	
<b>Total</b>		<b>\$42,525,890</b>			<b>\$10,842</b>	
<b>Recapture</b>		<b>\$3,333,819</b>			<b>\$850</b>	

# Lovejoy ISD M&O Cost per student to educate (Residents + Scholars w/o Tuition)

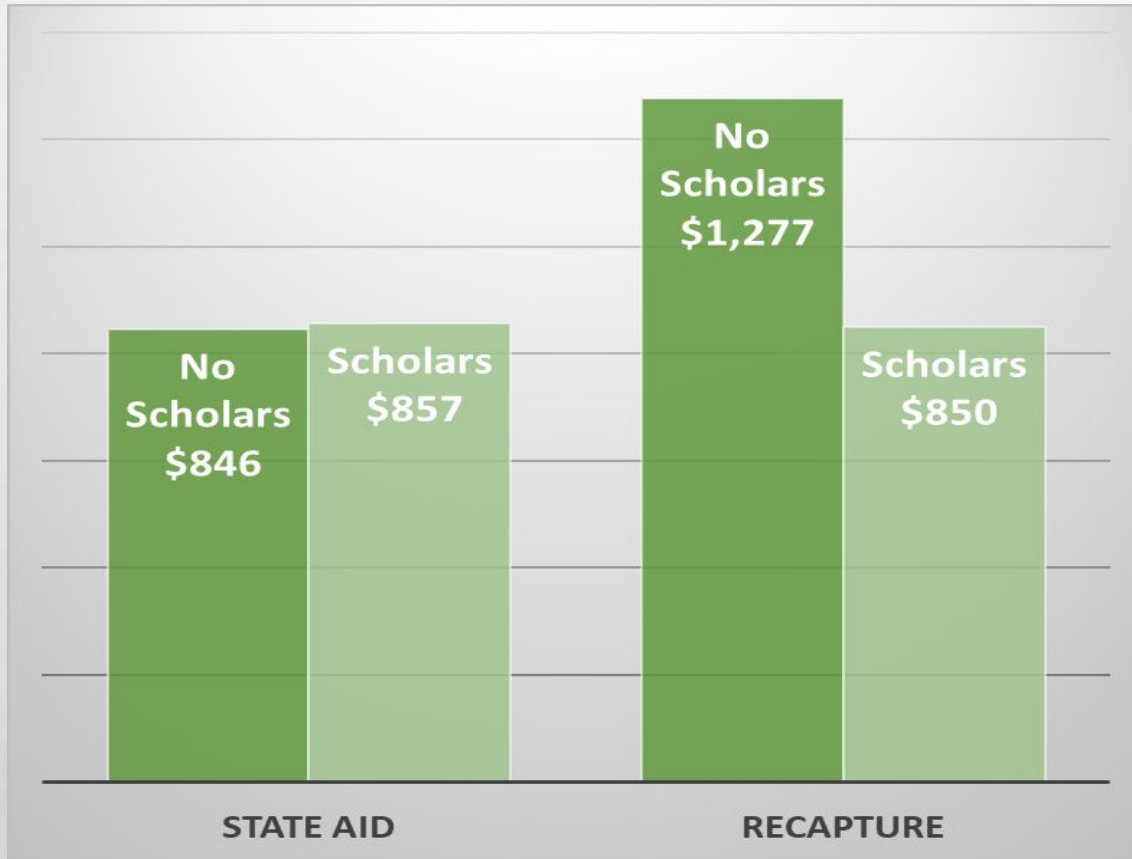


The 2023-2024 anticipated cost per student break down including Lovejoy scholars:

- Lovejoy ISD will expend approximately **\$10,864** per student in average daily attendance with the Lovejoy Scholar Program.
- Lovejoy ISD taxpayers directly fund **88.7%** of the cost to educate each student.
- State aid will fund **7.8%** of the cost to educate each student.
- Federal funding and fund balance make up the remaining **3.5%** of the cost to educate each student.

- 
- Lovejoy ISD taxpayers and scholars directly account for **91.2%** of Lovejoy ISD's overall revenue.
  - Governmental funding (state aid and federal) represents **8.8%** of Lovejoy ISD's overall revenue.

# Do Lovejoy Scholars generate additional state aid through the basic allotment?



- Lovejoy Scholars, without charging tuition, generate a net benefit of **\$438** per student.
- State Aid represents **\$11** per student.
- The **\$427** per student reduction in recapture represents the **local share staying within the district**.

# Key Takeaways

- For the 2023-2024 school year, Lovejoy ISD anticipates an expenditure of **\$11,861** per student to educate each **resident** student in average daily attendance (excludes Lovejoy Scholars).
  - The anticipated resident students in average daily attendance will generate **\$11,129** in revenue of which **91.5% is generated by Lovejoy ISD taxpayers** and **\$846 is directly from state aid**.
  - The use of fund balance would be required without Lovejoy Scholars.
- The addition of Lovejoy Scholars will generate efficiencies for Lovejoy ISD and reduce the cost per student in average daily attendance to **\$10,864**.
  - With Lovejoy Scholar Tuition, Lovejoy students in average daily attendance will generate **\$10,842** of which **\$857** is directly from **state aid**.
  - Without Lovejoy Scholar Tuition, Lovejoy students in average daily attendance will generate **\$10,586** of which **\$857** is directly from **state aid**.
  - The use of fund balance would be required without Lovejoy Scholars tuition
- Under current statute, Lovejoy ISD anticipated tuition for scholars plus the benefit from state aid does not exceed the district's actual expenditure per student in average daily attendance.

# Student Transfer Legislation: Potential Challenges

- Loss of tuition revenue
- Challenges to projecting district and campus enrollment
- UIL eligibility and reclassification
- Recruiting enough staff, especially in hard to fill areas (World Languages, Special Education, etc.)
- Hiring of certified educators to providing appropriate services for students
- Increased teacher to student ratios
- Updating master schedule throughout the school year may create student schedule changes and teacher changes
- Redistributing students when teachers and staff are added
- Additional time out of the classroom for teachers and staff to attend required meetings (e.g. ARDS and 504 Meetings)
- Additional responsibilities and time demands placed on administrators, counselors and support staff



THANK YOU

8. Presentation: Board Legislative Subcommittee Update  
**Presenter:** Barrett Owens, President

# Board Legislative Subcommittee Update

---

May 9, 2023

Board Workshop



**LOVEJOY**  
INDEPENDENT SCHOOL DISTRICT  

---

**EST. 1917**

# Education Bill Tracker: Transfer Program

Bill Number	Purpose	Status	Potential Impact to Lovejoy ISD
<b>SB 418</b> (*On 05-03-23 text from HB 4148 was inserted into SB 418)	<p>- Requires all Texas Public Schools to accept transfers from other school districts “<i>until the enrollment at the campus reaches capacity</i>”.</p> <p>- Prohibits charging tuition to address the existing gap in state aid vs district expenditure per student</p> <p>- Mandates transfer student acceptance criteria priority and lottery system for availability of seats.</p>	<p>- Authored by Angela Paxton 1/12</p> <p>- Bill Passed Senate Ed Committee 4/27</p> <p>- *Bill Passed by the full Senate 5/3</p> <p>- Headed to the House Education Committee</p>	<ul style="list-style-type: none"><li>● Significant reduction of revenue from tuition-based transfer program</li><li>● Inability to accurately project campus and district enrollment due to required open student transfers throughout the school year</li><li>● Challenges with recruiting additional teachers and staff resulting in increased teacher to student ratios (Hard to fill areas such as special education and world languages may be disproportionately impacted)</li><li>● Redistribution of students when teachers are added to accommodate for additional students</li><li>● Implications to UIL Academic, Fine Art, and Academic participation and competition</li></ul>
<b>Action Needed</b>	<p>- Passage of this bill in its current form will negatively impact Lovejoy ISD</p> <p>- Similar language from SB 418 may be inserted into other Senate Bills</p>		

# Education Bill Tracker: Basic Allotment

Bill Number	Purpose	Status	Impact to Lovejoy ISD
<b>HB 100</b>	Related to the funding and operation of public schools: (1) <b>Increases the basic allotment</b> to \$6,250 in 2024 (\$90 increase) and \$6,300 in 2025 (2) Mandates 50% of increase for compensation (3) <b>Adds an inflation adjustment</b> for the basic allotment (4) Moves to <b>enrollment based funding</b> for <u>certain</u> allotments. (5) Increases regular and special education transportation funding	-Introduced on 03-14 by Ken King -Bill Passed by the House 4/27 <b>-Headed to the Senate Education Committee</b>	<ul style="list-style-type: none"><li>● <b>Increases funding per student</b> for compensation and student programs, which also reduces our recapture payment.</li><li>● Annual inflation adjustment for the basic allotment provides more visibility to future funding.</li><li>● Increase to transportation funding offsets more of our current program cost.</li></ul>
<b>Action Needed</b>	<b>-Passage of this bill in its current form will positively impact Lovejoy ISD</b> <b>-Further increase to the basic allotment above proposed amounts would better address the actual cost to educate our students and reduce our recapture payment</b>		

# Our Representatives

---

## SENATE DISTRICT 8

Senator Angela Paxton



Capitol Office: 3E.2  
Capitol Phone: 512-463-0108  
Capitol Address: PO Box 12068, Capitol  
Station, Austin TX 78711

Email: [angela.paxton@senate.texas.gov](mailto:angela.paxton@senate.texas.gov)

Committees: State Affairs - Vice Chair  
Education  
Finance  
Local Government  
Nominations

## HOUSE DISTRICT 89

Representative Candy Noble



Capitol Office: E1.414  
Capitol Phone: 512-463-0186  
Capitol Address: PO Box 2910,  
Austin TX 78768

Email: [candy.noble@house.texas.gov](mailto:candy.noble@house.texas.gov)

Committees: Human Services  
Ways & Means

# Education Committee Members

---

Role	Texas House	Senate
<b>Chair</b>	Brad Buckley (R-Salado)	Brandon Creighton (R-Conroe)
<b>Vice Chair</b>	Alma Allen (D-Houston)	Donna Campbell (R-New Braunfels)
<b>Committee Members</b>	<ul style="list-style-type: none"><li>● Steve Allison (R-San Antonio)</li><li>● Charles Cunningham (R-Humble)</li><li>● Harold Dutton (D-Houston)</li><li>● Cody Harris (R-Palestine)</li><li>● Brian Harrison (R-Frisco)</li><li>● Cole Hefner (R-Mount Pleasant)</li><li>● Gina Hinojosa (D-Austin)</li><li>● Ken King (R-Canadian)</li><li>● Oscar Longoria (D-Mission)</li><li>● Matt Schaefer (R-Tyler)</li><li>● James Talarico (D-Round Rock)</li></ul>	<ul style="list-style-type: none"><li>● Paul Bettencourt (R-Houston)</li><li>● Brian Birdwell (R-Granbury)</li><li>● Peter Flores (R-Pleasanton)</li><li>● Phil King (R-Weatherford)</li><li>● Morgan LaMantia (D-S. Padre Island)</li><li>● José Menéndez (D-San Antonio)</li><li>● Mayes Middleton (R-Galveston)</li><li>● Tan Parker (R-Flower Mound)</li><li>● Angela Paxton (R-McKinney)</li><li>● Drew Springer (R-Muenster)</li><li>● Royce West (D-Dallas)</li></ul>



THANK YOU

9. Presentation: Bus Cameras

**Presenter:** Kevin Parker, Executive Director of Student Services

# Transportation Cameras

---

**Kevin Parker**

Executive Director of Student Services

May 9, 2023

Board Workshop



**LOVEJOY**  
INDEPENDENT SCHOOL DISTRICT  

---

**EST. 1917**

# Student Services

---

# Bus Cameras

---

- Current Fleet
  - 27 general education buses
  - 7 special education buses
- Current Routes
  - 3 special education routes
  - 12 general education routes
  - 2 shuttle routes

# Bus Cameras

---

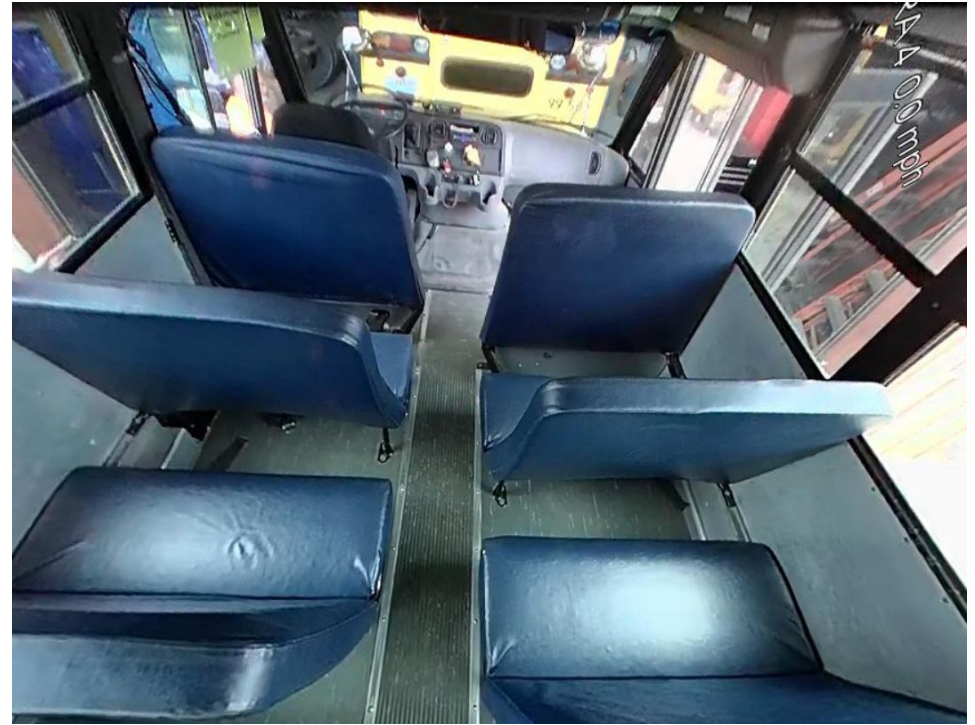
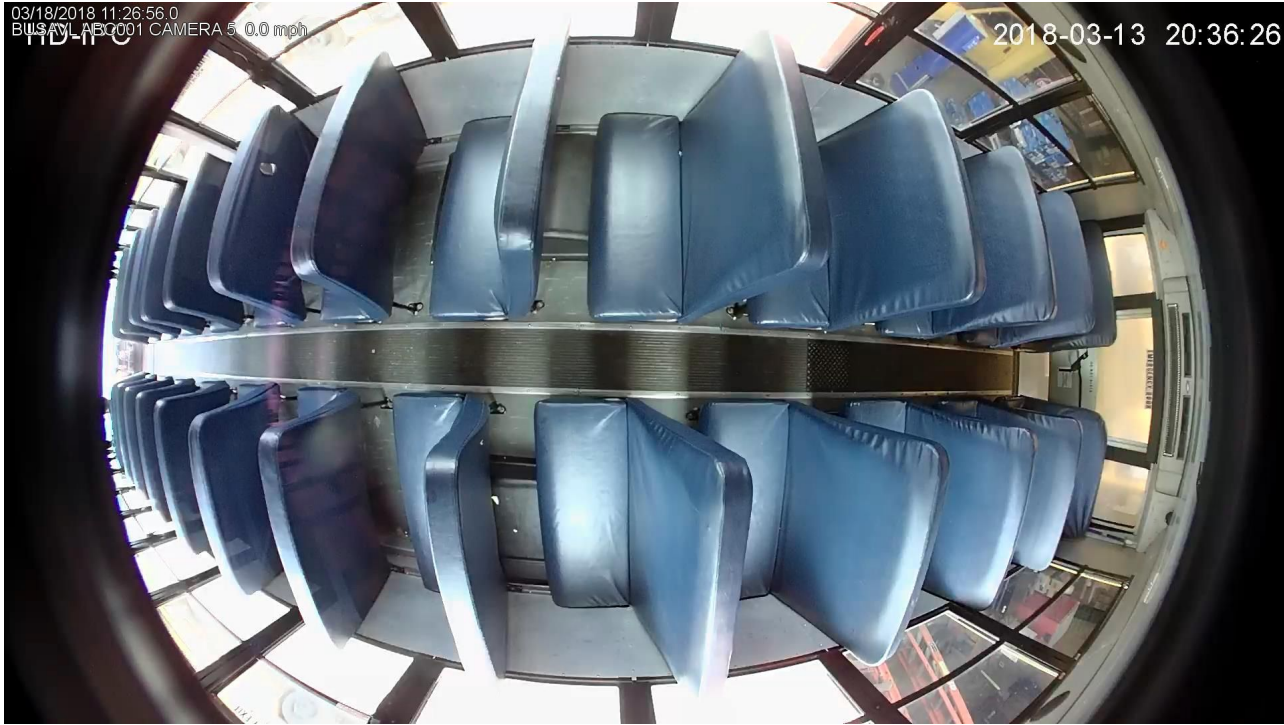
- Currently: Cameras installed on all special education buses
  - Removable Hard Drives
- Currently: No Cameras installed on any general education buses

# Bus Cameras

---

- Positively contribute to a safe and orderly environment on our school buses
- Decrease student misbehavior
- Assist administrators with investigations into safety concerns and behavior incidents on buses

# Bus Cameras (View from One Camera)



# Bus Cameras

---

- Cost (for all buses)
  - Option 1- Four-360 degree cameras + 1 windshield camera (five total cameras) per bus- \$92,400
  - Option 2- Four-360 degree cameras (four total cameras) per bus- \$86,800
  - Required- 1 wireless server and 35 wifi bridges and antenna kits- \$24,250
- Total Cost
  - Total Cost for Option 1: \$116,650
  - Total Cost for Option 2: \$111,050

# Bus Cameras

---

- It is possible to fund bus cameras because we have interest earnings and previously approved bond projects, which are now closed, that were completed for less than the original budget.
  - Interest Earnings: \$88,150
  - Athletic Improvements: \$88,027
  - Exhausted previous bond funds for current projects: \$167,998

**TOTAL of \$344,175**



THANK YOU

10. Presentation: Special Education Update

**Presenter:** Dr. Laurie Tinsley, Assistant Superintendent of Curriculum and Instruction

# Special Education Update

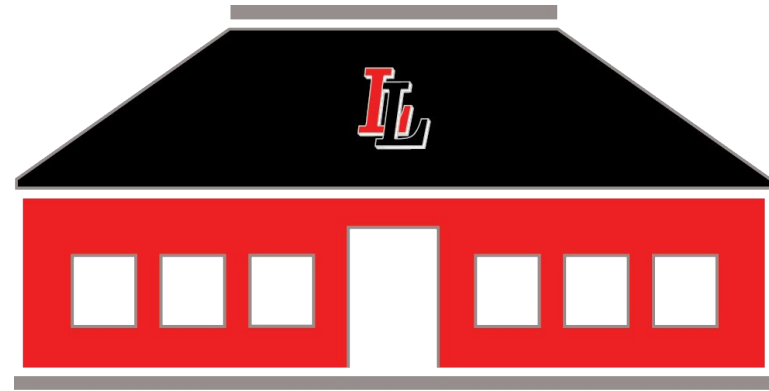
---

**DR. LAURIE TINSLEY**

Assistant Superintendent of Curriculum and  
Instruction

**May 9, 2023**

Board Workshop



**LOVEJOY**  
INDEPENDENT SCHOOL DISTRICT

---

EST. 1917

# TIMELINE

Fall 2021	Spring 2022	Fall 2022	Spring 2023
<ul style="list-style-type: none"><li>● Special Education Program Needs Assessment Conducted</li></ul>	<ul style="list-style-type: none"><li>● Formed Special Education Teacher/Staff Task Force</li><li>● Improved Coordination of Master Scheduling</li><li>● Identified Gaps and Needs for Professional Development 23-24</li></ul>	<ul style="list-style-type: none"><li>● Addition of Specially Designed Instructional Coach Position (Campus)</li><li>● Addition of Special Education Coordinator Position (District)</li><li>● Formed Special Education Advisory Committee (Parents and Staff)</li></ul>	<ul style="list-style-type: none"><li>● Reengaged with Consultant for Further Review and Analysis of Programming and Staffing</li></ul>

# Program Needs Assessment Findings

*(Initiated December 2021)*

- **Staff Capacity**

- Develop a comprehensive approach to professional development by focusing on general and special education topics for all school based personnel.

- **Staffing Model/Assignments**

- Based on Student Need and Benefit and ensure FAPE
- Severity of student need
- Time required to meet IEP services
- Data driven decision making
- Apply a wide range of service delivery models
- Supportive of special educators
- Create baselines for specialized support classrooms ( Life Skills, Behavior Classrooms)

- **Master Scheduling**

# Program Needs Assessment Findings

*(Spring 2023)*

- Diagnosticians expertise regarding students with disabilities and the impact of student's disability on learning is highly valued by district. Expertise in special education is also seen as a strength. Availability of educational diagnosticians due to current role is limited
- Recommendation - broaden special education team at campus level to include educational diagnostician
- Role clarity within collaborative structures is needed among staff in special education - Streamlining of meetings
- Case management numbers are high. Recommend increasing number of special education teachers to meet needs of students

# Program Needs Assessment Findings (continued)

*(Spring 2023)*

- Reduction of paperwork is necessary to reduce workload of teachers and evaluation teams
- Pre referral process and referral to special education procedures are inconsistent across district. Consistency in practices are needed to improve outcomes for students
- Professional learning plan for campus administration, special education teachers, general education teachers, evaluation teams of roles
- Special education representative on campus leadership team is needed to assist with communication, collaboration, professional learning
- Refining of Specially Designed Instructional Coach role in coaching of teachers across campuses

# RESPONSE TO STAFFING

---



**LOVEJOY**  
INDEPENDENT SCHOOL DISTRICT  
EST. 1917

# Assessment and Related Services Staff

- Diagnosticians
  - 4 full time, 1 part time
  - Lead Diagnostician
  - Assign to Campuses (Assist w/capacity building and support)
  - Increased Assessments in 23-24 (Due to COVID year)
    - Utilize contracted services to assist w/assessments if necessary
- Minimize part time positions and contracted services as appropriate

# Special Education Teachers

- Additional Campus Special Education Teacher Position - All Campuses
- Increase Teacher Stipend from \$2000 to \$5000
- Streamline Paperwork Requirements
- Master Scheduling Changes - Address Collaboration, Communication, Professional Learning
- Special Education Lead/Department Chair (all campuses)

# RESPONSE TO SPECIAL EDUCATION DISTRICT AND CAMPUS SYSTEMS AND PROCESSES

- Review of Current Student Management Systems
- Revise Pre-referral and Referral Procedures and Processes
- Addition of 2 Special Education Clerk Positions
  - Assist with Scheduling, Paperwork, Collection of Information
  - 1 - LHS
  - Counseling Assistant - Support WSMS
  - 1 -Share SCIS, HES, PES

# COMING SOON



**LOVEJOY**  
INDEPENDENT SCHOOL DISTRICT  
EST. 1917

## PARENT MEETINGS

- Meet New Director of Special Education - Allison Claunch
- Learn About the LISD Vision and Future of Special Education Programming
- Meeting Dates
  - LHS May 23, 5:30-6:30
  - WSMS May 9, 6:00-7:00
  - SCIS May 11, 9:30-10:30
  - HES May 12, 9:00-10:00
  - PES May 16, 5:30-6:30

## July 26 and 27: Staff Professional Development

- Special Education Planning and Professional Development
- Includes District and Campus Administrators and Special Education Teachers
- Compensation for Staff Not on Contract (Teachers)



THANK YOU

11. Presentation: Capital Planning Update

**Presenter:** Katie Kordel, Superintendent of Schools and Thomas Willman, Chief Financial Officer

# Capital Planning Update

---

Board Workshop

May 9, 2023



**LOVEJOY**  
INDEPENDENT SCHOOL DISTRICT  

---

**EST. 1917**

# Capital Planning Committee



May 4, 2023





# Capital Planning Committee Purpose

Lovejoy ISD's Capital Planning Committee is an advisory stakeholder committee formed by the Board of Trustees and District leadership. The purpose of the Capital Planning Committee is to assess short and long-range capital needs. This could include items such as facilities, fleet, technology, furniture, fixtures, and equipment, etc. The Lovejoy ISD Capital Planning Committee will provide input to the District in support of District strategic goals and those associated short and long-range capital needs. The Capital Planning Committee will strategically balance the District's identified capital needs and financial decision making in order to achieve Lovejoy ISD's mission and commitment to our Legacy of Excellence.



# Committee Charge

---

To help the district plan for the future, the **Capital Planning Committee** will:

- Review the District's current and long-term capital needs assessment data
- Consider the educational needs of all students and align recommendations with the district's mission, vision and goals
- Represent the entire school district community's values, priorities, and perceptions
- Develop an understanding of best practices in educational delivery models and what is needed to support future ready instruction
- Understand the district's current capital needs and funding methods available to develop recommendations that are fiscally sound
- Identify opportunities for prioritization in the capital planning process
- Provide an assessment of strengths, weaknesses, opportunities, and threats

# Lovejoy Independent School District

## Focus Areas

*Mission: To propel every person to personal excellence.*

### Legacy of Excellence

- We will build on Lovejoy ISD's legacy of excellence through a shared commitment to our mission and core values.
- We will maintain high expectations and leverage the collective impact of the Lovejoy ISD community to ensure achievement of outcomes on behalf of students.
- Lovejoy ISD traditions will enable us to honor the past, celebrate the present, and provide a continuing legacy for the future.
- We #LiveLovejoy.

### Future Ready Students

- Students will personify the graduate profile by experiencing challenging and engaging learning.
- Research-based instructional strategies will be strategically partnered with innovation.
- Profound learning will develop key skills essential to thriving now and in the future.
- Technology will be leveraged to enhance individualization, deepen learning, and prepare students for an increasingly technology-driven workforce.

### Financial Sustainability

- Lovejoy ISD will establish a plan for short and long-term financial sustainability.
- We will strategically balance financial decision-making with Lovejoy ISD's mission and commitment to the Lovejoy experience.
- A financial assessment, identification of priorities, and intentional decision-making process will support strategic financial planning.
- Zero-based budgeting will be utilized and transparency will be prioritized.



# Capital Planning Committee



*Excellence  
by Design*

2021-2022  
100  
Stakeholders



**LOVEJOY 2030**

TOGETHER FOR OUR FUTURE

LOVEJOY 2030  
Strategic Planning  
Committee

Teaching &  
Learning

Graduate Profile

Legacy of  
Excellence

Financial  
Sustainability

Operations

Future Ready

Talent Acquisition,  
Retention, &  
Support

Financial  
Sustainability  
Committee

## Products

Future Ready Skills

Strategic Targets

Strategies

Key Indicators



**LOVEJOY 2030**

# Operations



**LOVEJOY 2030**

## **Strategic Target 4.2**

Fully utilize existing facility space to be more collaborative and efficient for future learning needs.

	<b>Strategy</b>	<b>Key Indicators</b>
<b>Strategy 4.2.1</b>	Creation of multi-use collaboration spaces.	Tours of other schools and organizations with collaborative spaces Implementation and Utilization of Collaborative Spaces Utilization of Collaborative Space Stakeholder Feedback
<b>Strategy 4.2.2</b>	Tour and benchmark against out of district HS/Universities and industry partners future ready collaboration spaces and apply to other campuses.	Completion of Tours and Benchmark Reviews Stakeholder Feedback, Reflections, and Recommendations
<b>Strategy 4.2.3</b>	Implementation of an Operations/Capital Improvement Committee	Formation of Committee Establish Committee Charge Committee Recommendation

Mission:

To propel every person to  
personal excellence

Our



Why

**LOVEJOY**

INDEPENDENT SCHOOL DISTRICT

EST. 1917





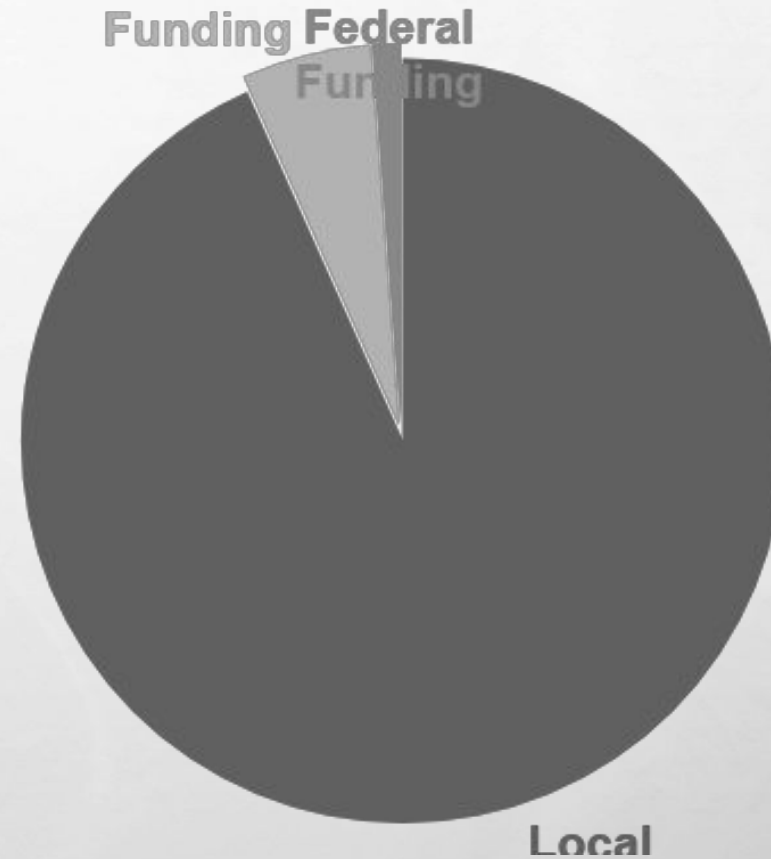
# School Finance and Debt Service



# SCHOOL FINANCE 101: BIG PICTURE

A school district's revenue is generated from **three** sources:

- Local Funding
- State Funding
- Federal Funding



# SOURCES OF REVENUE

## LOCAL

- Property Taxes (local effort)
- Interest Income
- Fees and Tuition
- Donations
- Student lunch payments

## STATE

- State Aid (dollars from TEA to support education)
- Instructional Materials Allotment
- State Grants:
  - Safety and Security
  - Dyslexia
  - Autism

## FEDERAL

- Medicaid reimbursements
- Federal Grants:
  - IDEA B: Special Education
  - ESSA Funds:
    - Low-income areas
    - National School Lunch Program

# FEDERAL FUNDING

- Appropriated for special programs or to provide services to a specific group of students
- Cannot be used to replace state or local dollars to fund a program
- Represents 2.2% of Lovejoy ISD's overall funding



# STATE FUNDING

## Foundation School Program (FSP)

- Primary source of state funding for school districts
- Administered by TEA
- Ensures that all school districts, regardless of property wealth, receive "substantially equal access to similar revenue per student at similar tax effort."
- Represents 6.6% of Lovejoy ISD's overall funding



# LOCAL FUNDING

- Generated from property taxes (not sales taxes)
- Represents 91.2% of Lovejoy ISD's overall funding
- Each year, a school district adopts two tax rates:
  - Maintenance & Operations (M&O)
  - Interest & Sinking (I&S)



# MAINTENANCE AND OPERATION (M&O) TAX

Funds the day-to-day **maintenance & operations** of the school district:

- Salaries (for teachers and other staff)
- Facility repairs and maintenance
- Bus repairs, maintenance and fuel
- Food services
- School supplies and materials
- Utilities (electricity, water, etc.)

**For the average citizen  
this is similar to:**

- ✓ **House repairs**
- ✓ **Car fuel**
- ✓ **Routine services**
- ✓ **Groceries**
- ✓ **Cleaning supplies**
- ✓ **Utilities**

# INTEREST AND SINKING (I&S) TAX

Funds debt repayment for “big ticket” items that have more than a year of useful life:

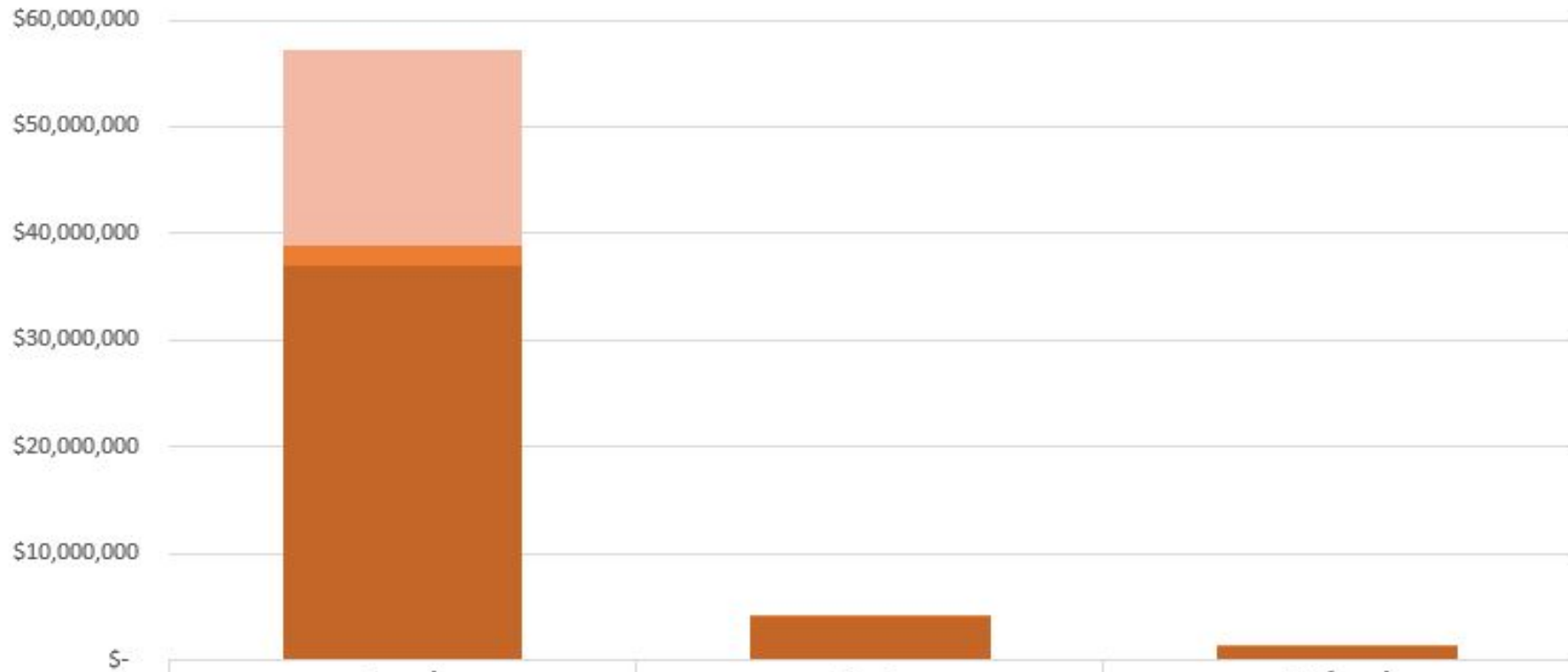
- New building construction
- Existing building renovations
- Land purchases
- Program specific equipment (band instruments, athletic equipment, etc)
- Technology
- School Buses

**For the average citizen**

**this is similar to:**

- ✓ **New home purchases**
- ✓ **House renovation**
- ✓ **Land for a home**
- ✓ **New Appliances**
- ✓ **New home computer**
- ✓ **New Car**

# LOVEJOY ISD 2022-2023 BUDGET



	Local	State	Federal
Debt Service	\$18,304,370		\$-
Student Nutrition	\$1,829,143	\$3,809	\$169,835
General Fund	\$37,006,594	\$4,092,512	\$1,242,732



PBK



# EXPERTS IN LONG-RANGE FACILITY PLANNING

**100M+**

**SF WALKED**  
**(OVER THE PAST 5 YEARS)**

**27+**

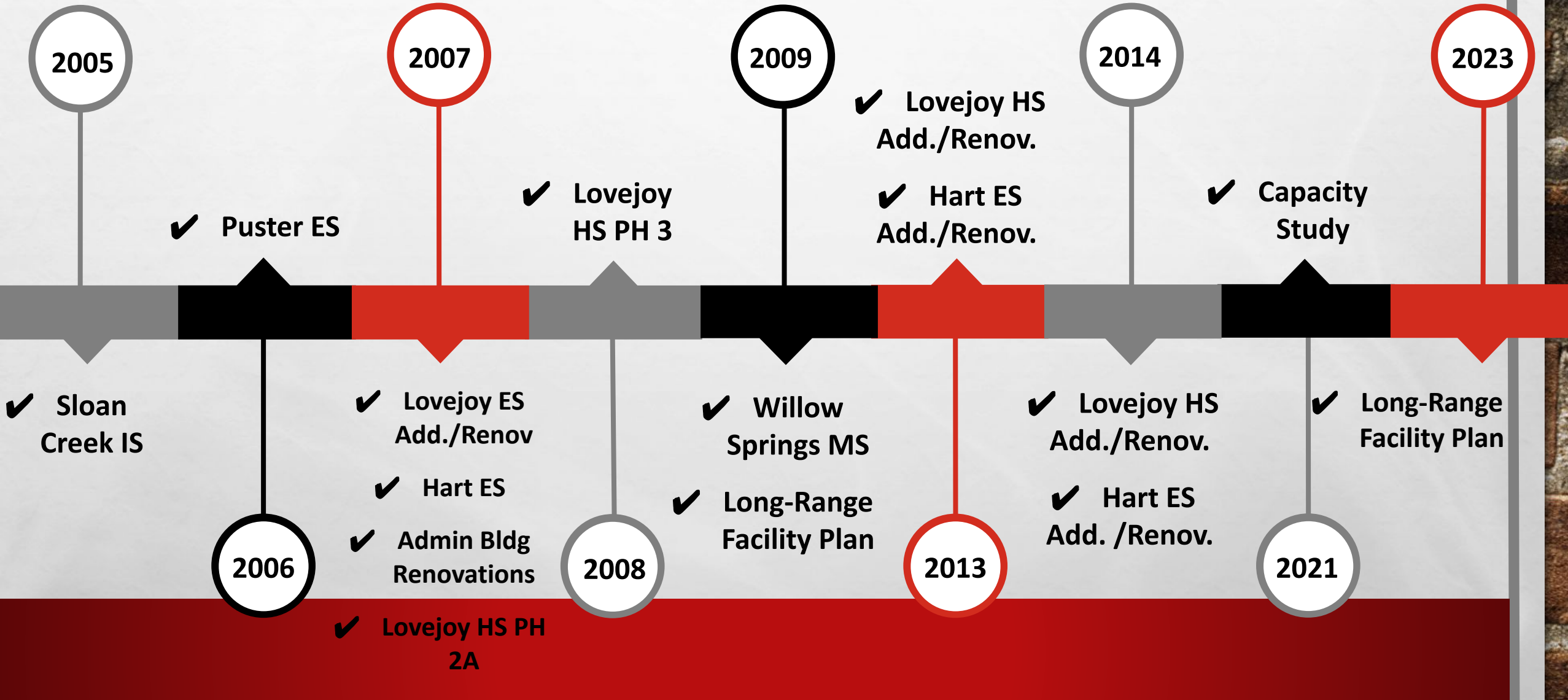
**PREK-12**  
**LONG-RANGE**  
**FACILITY**  
**PLANS**  
**(OVER THE PAST 5**  
**YEARS)**

**15+**

**SMALL-RURAL**  
**DISTRICTS**  
**SERVED**



# PBK'S HISTORY IN LOVEJOY ISD

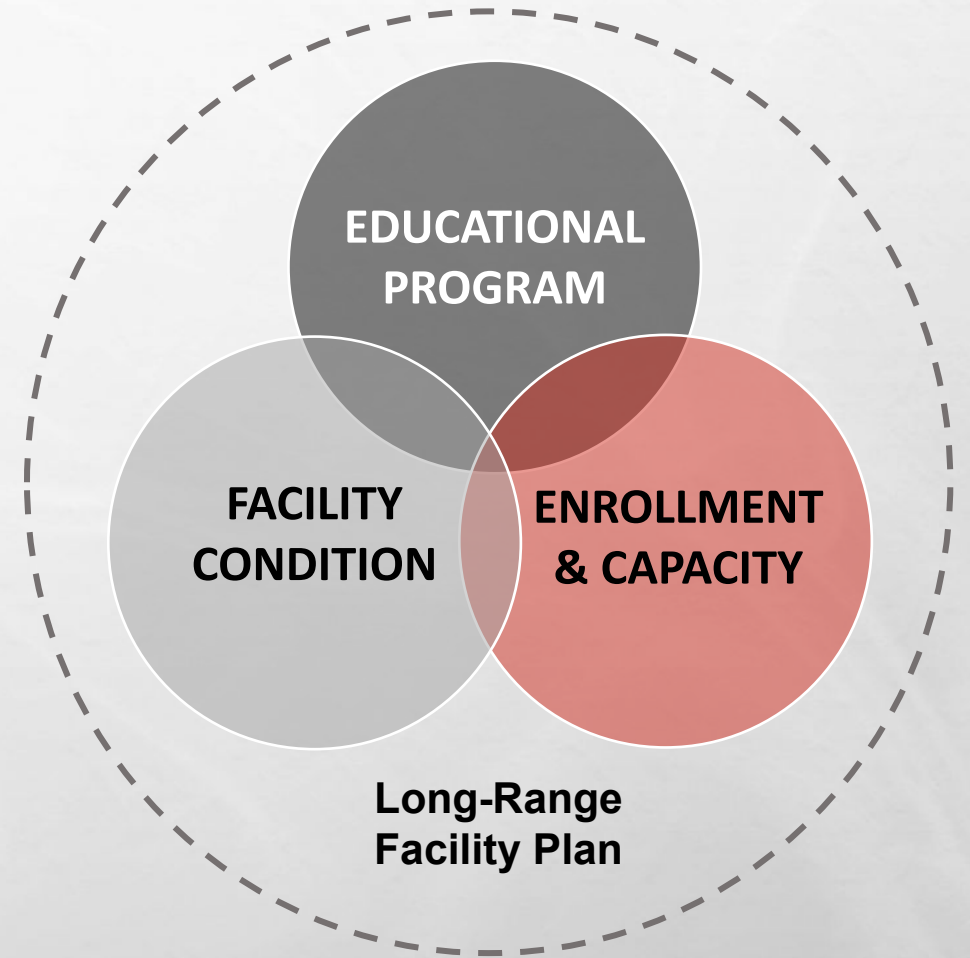


# WHAT IS A LONG-RANGE FACILITY PLAN?

## ...by Definition

A Long-Range Facility Plan (LRFP) is a comprehensive summary of facility needs that serves as a strategic management tool for District facilities over time

- Documents the existing condition of District's facilities
- Considers the District's ability to accommodate educational programs
- Studies District's capacity to accommodate current and future enrollment



# THE FACILITIES CONDITION ASSESSMENT

## Architectural, Engineering & Consultant Teams

- **Site/Civil** (*Paving, Drainage, Site Utilities, etc.*)
- **Building Envelope** (*Roofing, Exterior Walls, Windows, etc.*)
- **Architectural** (*Finishes, Code Compliance, etc.*)
- **Mechanical** (*HVAC, Exhaust & Building Systems Automation, etc.*)
- **Electrical** (*Lighting, Panels, Outlets, etc.*)
- **Plumbing** (*Domestic Water, Sanitary Sewer, Gas, Fixtures, etc.*)
- **Technology/Low-Voltage** (*Data, Projectors, Intercom, Local Sound, etc.*)
- **Life Safety & Security** (*Secure Front Entries, Cameras, Card Readers, etc.*)
- **Food Service** (*Kitchen, Serving Lines, Equipment, etc.*)
- **Athletics** (*Turf, Track & Field, Gyms, Weight Rooms, etc.*)



# THE FACILITIES CONDITION ASSESSMENT

## ...by The Numbers

11

Facility  
Questionnaire  
Responses Received

10

Sites

17

Buildings

8

Assessors

12

Hours of Meetings to Date

- ✓ Project Kickoff / Pre-Assessment Tabletop
- ✓ Principal Interviews / Line-by-Line Data Review, Round 1

700,000

Square Feet

Walked



# Meeting Dates

---

Thursday, May 4, 2023

Thursday, May 11, 2023

Resume Meetings in late August/early September



THANK YOU

12. Presentation: Capital Needs Assessment Process

**Presenter:** Katie Kordel, Superintendent of Schools and Kyle Pursifull, Senior Director of District Support Services

# YOUR **PBK** TEAM

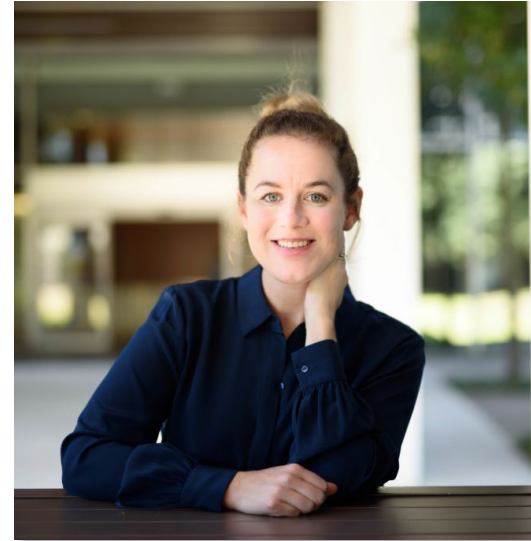
PBK is a group Architects and Engineers specializing in the planning and design of K-12 learning environments. Our passion is to create environments that improve how people work, play, heal, discover and learn.



**DANNY**  
PRINCIPAL



**TODD**  
PARTNER



**CAROLINE**  
DIRECTOR OF  
FACILITY PLANNING



**AMANDA**  
FACILITY PLANNING  
PROJECT MANAGER

**40+ yrs.**

Specializing in K-12

**450+**

Planning & Design Awards

**300+**

Long-Range Plans Completed

# THE LONG-RANGE FACILITY PLANNING PROCESS

★ WE ARE HERE

## FACILITIES CONDITION ASSESSMENT

- Initiation & Pre-launch Planning Meetings
- Scope, Goals, Deliverables & Timing
- Schedule & Milestones
- Team Composition, Key Stakeholders, Roles & Responsibilities
- District Mission, Priorities, Initiatives & Baseline Data
- Facility Inventory & History and Capacities
- Demographics & Enrollment Data
- Maps, Floor Plans, Aerials

### PLAN & DISCOVER

- Facility Questionnaires
- Tabletop Review Meeting
- Principal Interviews
- Facility Site Walks
- Data Entry, Classification, Prioritization, Quantification & Cost Estimating
- Line-by-Line Data Review Meetings
- Data Refinement
- Preliminary Data Reporting & Review

- Capacity Studies
- Departmental Meetings
- Facility Deficiencies, Needs & Opportunities
  - Life-Cycle Repair/Replacement Needs
  - Educational Adequacy
  - Growth
- Potential Options, Probable Costs, Prioritizing & Phasing
- Major Project Recommendations
- Stakeholder Feedback
- Master Planning Meetings

### MASTER PLANNING

# THE FACILITIES CONDITION ASSESSMENT

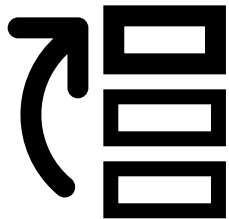
## ...by Definition

A facilities condition assessment is a comprehensive, systematic evaluation of **existing conditions** for a facility or group of facilities.

It involves a thorough, visual examination of the interior and exterior of each designated campus or site (beginning with a site-by-site, building-by-building, physical walk-through) in order to assess current-state conditions and anticipated remaining useful life of those buildings, sites, systems and component systems.



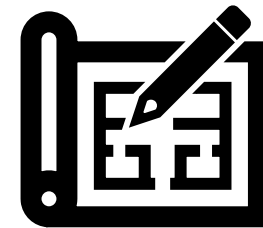
ASSESS



PRIORITIZE



PRICE



PLAN

# THE FACILITIES CONDITION ASSESSMENT

## Data Collection & Analysis

- ✓ **Questionnaires** distributed to school principals and other key stakeholders to gather feedback regarding known facility deficiencies and needs.
- ✓ **Pre-Assessment Tabletop Review Meeting** held to discuss the condition of Mechanical, Electrical, Plumbing, Technology systems at each facility.
- ✓ **Principal Interviews** held with each campus principal to hear highest needs and wants. Additional considerations not related to life-cycle replacements taken into account.
- ✓ **Site Assessment** teams walk each facility and create a detailed list of observed deficiencies.
- ✓ **Database** developed to organize, prioritize, and price site assessment findings.



Facility	Building	Facility Type	Corrective Action	PBK, Consultant or Questionnaire Comments	Discipline	Classification	Location	Priority	Source
Lovejoy High School	LHS - Site	High School	Add traffic control swing gates throughout campus.	Manually operated with no electrical gate operators	Life Safety & Security	Security	Site	1	District Personnel
Lovejoy High School	LHS - Site	High School	Add traffic control manual boom gates throughout campus	Manually operated with no electrical gate operators	Life Safety & Security	Security	Site	1	District Personnel
Lovejoy High School	LHS - Site	High School	Add guard shack along west drive	6'x6' prefabricated unit with insulated walls and AC/Heat unit.	Life Safety & Security	Security	Site	1	District Personnel
Lovejoy High School	LHS - Site	High School	Add site wayfinding signage.	2'x4' Two post aluminum panel signs with graphics on two sides.	Life Safety & Security	Signage / Wayfinding	Site	1	Consultant Assessme
Lovejoy High School	LHS - Site	High School	Provide new digital marquee	Includes foundation, masonry, LED panel sign and backlighting for graphics	Life Safety & Security	Signage / Wayfinding	Site	2	District Personnel
Lovejoy High School	LHS - Site	High School	Add traffic control speed bumps throughout campus	Remove concrete and repour with integral speed bumps	Architecture	Site Paving - Replacement	Site	1	District Personnel
Lovejoy High School	LHS - Main Building	High School	Remove and replace ceiling with new acoustical lay-in ceiling tile and grid throughout original 2005 facility.		Architecture	Ceiling	Building-wide	3	Consultant Assessme
Lovejoy High School	LHS - Main Building	High School	Replace exterior door hardware for original construction areas. Includes panic hardware, closers, and hinges.		Architecture	Doors - Hardware Only	Exterior Walls	2	Consultant Assessme
Lovejoy High School	LHS - Main Building	High School	Replace vinyl composite tile (VCT) and base throughout original 2005 facility.		Architecture	Flooring - Carpet, Tile, Etc.	Classroom(s)	3	Consultant Assessme
Lovejoy High School	LHS - Main Building	High School	Replace carpet and base throughout original 2005 facility.		Architecture	Flooring - Carpet, Tile, Etc.	Classroom(s)	1	Consultant Assessme



**BUILDING  
SYSTEM  
LIFE-SPANS**

<b>SYSTEM</b>	<b>USEFUL LIFE</b>
Boilers	15 years
Chillers	15 years
Cooling Towers	20 years
Air Handlers – Indoor	25 years
Air Handlers – Outdoor	20 years
Rooftop Units	15 years
Switchboards	30 years
Generators	20 years
Intercom / Access Control / Intrusion Detection	15 years
Lighting & Controls	20 years
Roof	20 years

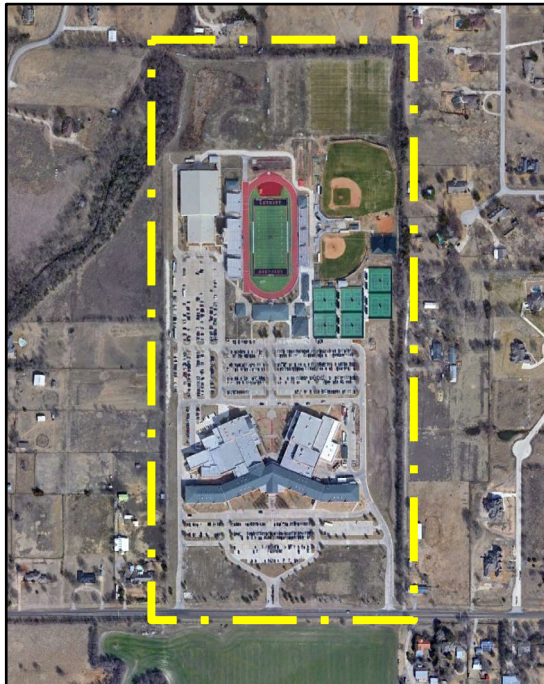


## **DISTRICT-WIDE STRENGTHS, NEEDS & CONCERNS**

- Secure vestibules and window film has been installed at all campuses.
- Replace wayfinding signage across district for consistency at each campus.
- Add changing tables to special education restrooms.
- Update campus marquee signs to provide consistent messaging opportunities.
- Some campuses are on septic systems.

# LOVEJOY HS Strengths & Opportunities

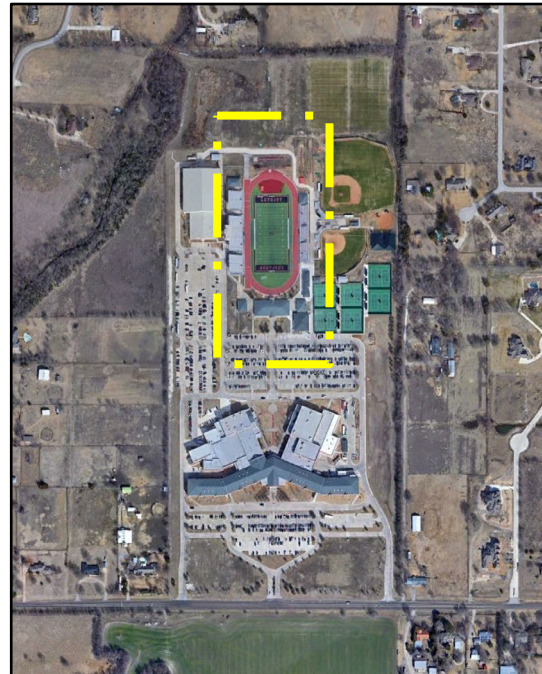
---



- Increase traffic control measures to include swing gates and speed bumps.
- Upgrade Parking Lot Lighting to energy efficient LEDs.
- Rooftop exhaust fans and DX units nearing end of life.
- Several pieces of kitchen equipment are nearing end of useful life.
- New drains are recommended in the Baseball, Softball, Track, and Soccer Locker rooms to contain water from the showers.
- New Audio-Visual / Sound system needed in auditorium.

# LEOPARD STADIUM Strengths & Opportunities

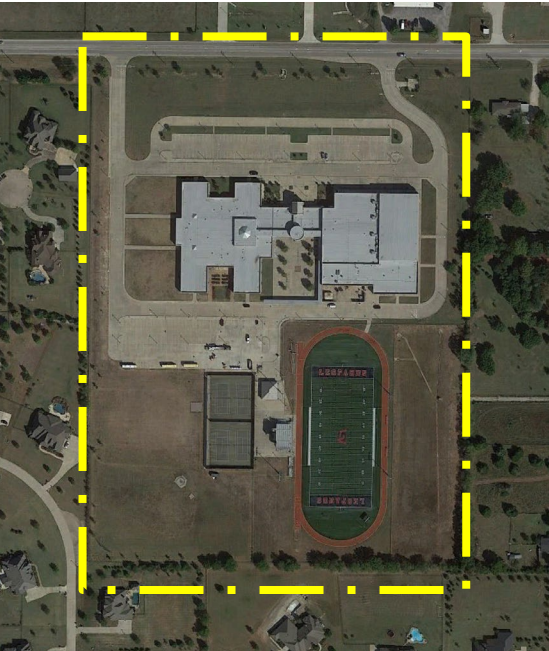
---



- One of the newest buildings in the district.
- Building is in great condition - most items are future life-cycle needs.
- Bird netting could be added to the video deck to deter birds from nesting.

# WILLOW SPRINGS MS Strengths & Opportunities

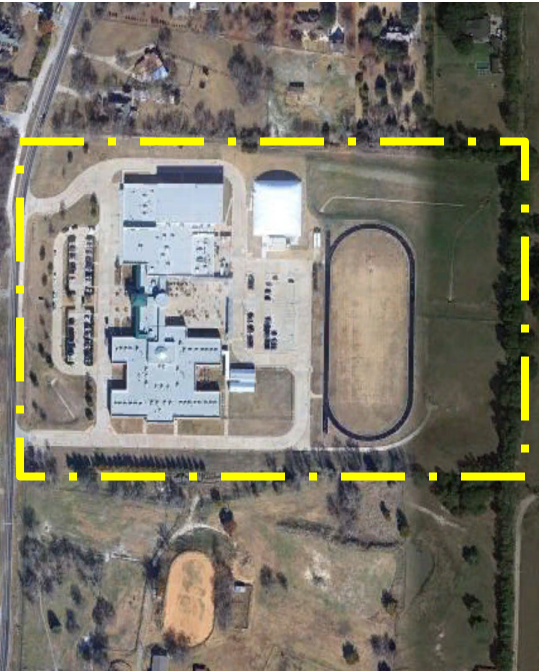
---



- Building is in great condition - most items are future life-cycle needs.
- Some improvements needed to the tennis court backboard.
- CO monitoring systems could be added to the water heater closet's throughout the building.
- LISD staff noted that the weight room is not large enough.
- Modifications to the STEM / Robotics lab is desired by LISD Staff.

# SLOAN CREEK IS Strengths & Opportunities

---



- Building was designed as a JHS, some spaces could be reconfigured to provide better space utilization.
- Upgrade Parking Lot Lighting to energy efficient LEDs.
- Provide outdoor play areas.
- Lockers in hallways are no longer used. Potential to repurpose some of the locker areas.
- Cafeteria sound system needs repair / replacement.
- Hot water heaters are nearing end of useful life.

# NATATORIUM Strengths & Opportunities

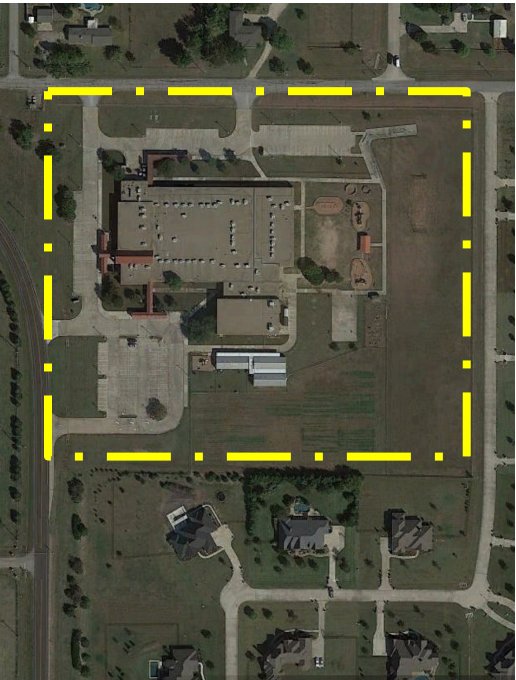
---



- Not common for most ISD's to have a natatorium.
- Fabric structure is in need of internal repair.
- Consideration should be given to replacing the air supported fabric structure.
- Upgrade Parking Lot Lighting to energy efficient LEDs.

# HART ES Strengths & Opportunities

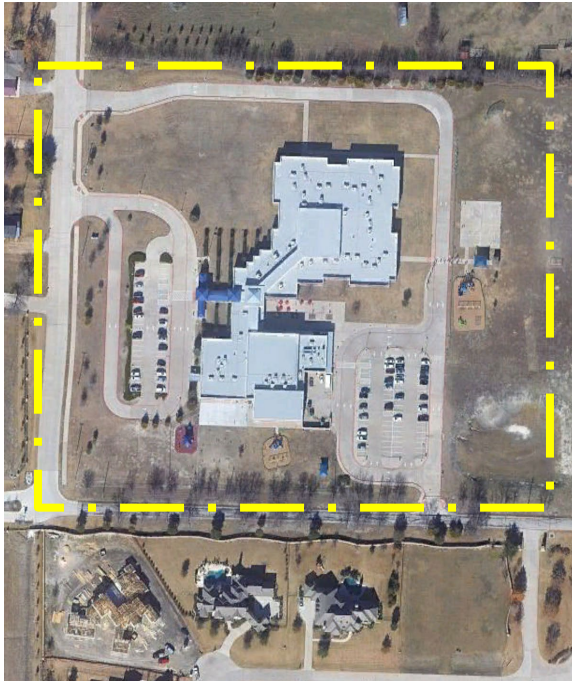
---



- Rooftop exhaust fans and DX units nearing end of life.
- Cafeteria sound system needs repair / replacement.
- Playgrounds are in good shape but are original to the campus.
- Modifications to the canopies are recommended to prevent birds from nesting.

# PUSTER ES Strengths & Opportunities

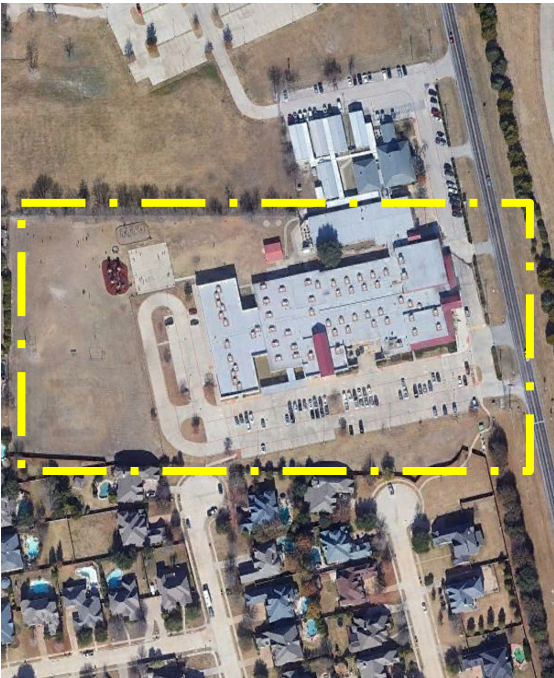
---



- Building is in great condition - most items are future life-cycle needs.
- Replace heaved and settled concrete at main entry.
- Several pieces of kitchen equipment are nearing end of useful life.
- Hot water heaters are nearing end of useful life.
- Expansion joint covers should be installed at the floor level.

# LOVEJOY CDC Strengths & Opportunities

---



- Building is in great condition - most items are future life-cycle needs.
- Some spaces are currently being used for functions that differ from the spaces original design.
- The building is used for multiple functions, a clear sense of entry for the Child Development Center is desired.
- Replacement of the existing rooftop exhaust fans and IDF/MDF air conditioning system is recommended.

# ADMINISTRATION BUILDING Strengths & Opportunities

---

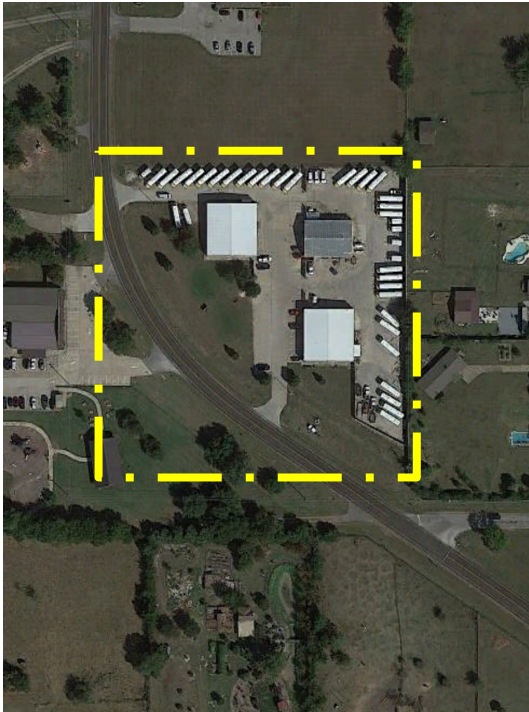


- Building is in great condition - most items are future life-cycle needs.
- Upgrade Parking Lot Lighting to energy efficient LEDs.
- Replacement of existing window trim and a few exterior doors are recommended.



# TRANSPORTATION & MAINTENANCE Strengths & Opportunities

---



- Transportation building is in need of interior renovations along with sliding door replacements.
- Transportation building electrical switchgear is nearing end of useful life.
- HVAC units in all buildings are nearing end of useful life.
- Additional fencing is recommended to secure bus parking.

13. Discussion: Board Self-Assessment  
**Presenter:** Barrett Owens, President
14. Announcements  
**Presenter:** Barrett Owens, President
15. Adjournment  
**Presenter:** Barrett Owens, President