

Board of Education Regular Meeting  
Monday, October 12, 2015 8:00 PM

Board Room  
1301 Centennial Avenue  
Utica, NE 68456-0187

## **Agenda**

1. MEETING CALL TO ORDER
  1. Reading of Public Meeting Notice
    1. Open Meetings Act
  2. Roll Call
  3. Consent Agenda
    1. Additions/Deletions and Agenda Approval
    2. Consider Minutes of Previous Meeting(s) and Their Approval
    3. Consider Current Bills and Their Approval
    4. Consider Activity Accounts and Treasurer's Report
    5. Excuse Larry Paxson's Absence
  4. Introduction of Guests; Invite Comments
2. OLD BUSINESS
3. NEW BUSINESS
  1. REVIEW DISTRICT ENROLLMENT NUMBERS
  2. NATIONAL SCHOOL BOARDS ASSOCIATION CONFERENCE
  3. APPOINT NASB DELEGATE ASSEMBLY REPRESENTATIVE
  4. SCHOOL CALENDAR CHANGE
  5. CONSIDER COURSE APPROVAL FOR HORIZONTAL MOVEMENT
  6. CONSIDER PROPOSAL FOR DOOR ACCESS CONTROL
  7. AFFORDABLE CARE ACT
  8. BOARD MEMBER REPORTS
  9. ADMINISTRATOR'S REPORTS
4. ADJOURN

# CENTENNIAL PUBLIC SCHOOL

1301 Centennial Avenue  
P.O. Box 187  
Utica, NE 68456-0187  
402-534-2321  
FAX 402-534-2291

Tim DeWaard  
Superintendent  
402-534-2291

Colin Borgen  
Secondary Principal

Dean Davis  
Activities Director

Marni Parrack  
Elementary Principal

Bob Fish  
Counselor

John McClarnen  
Special Services

## CENTENNIAL BOARD OF EDUCATION REGULAR MEETING September 14, 2015

Notice of meeting was published in York News Times on September 4, 2015.

Meeting was called to order at 8:24p.m. with all board members present. Administrators present were Mr. DeWaard, Mrs. Parrack, Mr. Borgen and Mr. McClarnen.

In lieu of dissent, the consent agenda was accepted as presented.

Motion made by Heine seconded by Avery, to adopt the 2015-2016 budget: the General Fund in the amount of \$8,087,000.00 requiring property taxes, including the County Treasurer's collection fee, of \$5,809,772.50; the Bond Fund Budget in the amount of \$1,067,215.00 requiring property taxes, including the County Treasurer's collection fee, of \$883,750.00; the Special Building Fund Budget in the amount of \$1,324,899.00 requiring property taxes, including County Treasurer's collection fee, of \$505,000.00; the Depreciation Fund Budget in the amount of \$214,901.00; the Employee Benefit Fund in the amount of \$65,792.00; the School Lunch Fund in the amount of \$344,908.00; the Activity Fund Budget in the amount of \$468,743.00; the Qualified Capital Purpose Undertaking Fund in the amount of \$238,379.00 requiring property taxes, including the County Treasurer's collection fee, of \$227,250.00. Members polled: Avery, for; Cast, for; Heine, for; Paxson, for; Richters, for; Tonniges, for. Motion carried 6-0.

Motion made by Heine, seconded by Avery, to approve the 2015-2016 tax request resolution as presented. Members polled: Avery, for; Cast, for; Heine, for; Paxson, for; Richters, for; Tonniges, for. Motion carried 6-0.

Mr. Borgen shared with the board the ACT results.

Mr. DeWaard reviewed the current enrollment.

Motion made by Avery, seconded by Tonniges, to approve making passes available in the superintendent's office to anyone 62 years of age and over regardless of residency, past board members and retired Centennial staff members. Members polled: Avery, for; Cast, for; Heine, for; Paxson, for; Richters, for; Tonniges, for. Motion carried 6-0

Motion made by Richters, seconded by Cast to approve allowing Mrs. Purdham, Mr. Poik, Ms. Anstine, Mrs. Barjenbruch, Mrs. Heine, Mrs. Dey, Mrs. Chrisman, Mr. McClarnen, Mrs. Henry and Mrs. DeWaard to attend out of state conferences. Members polled: Avery, for; Cast, for; Heine, for; Paxson, for; Richters, for; Tonniges, for. Motion carried 6-0.

Mr. DeWaard encouraged board members to attend the Annual Conference for the National School Boards Association to be held in Boston on April 9 to 11, 2016.

Heard Board member reports.

Heard Administrator's reports.

Meeting adjourned at 10:19 p.m.

Douglas Tonniges, Secretary  
Centennial Board of Education

DT:mr

# CENTENNIAL PUBLIC SCHOOL

1301 Centennial Avenue  
P.O. Box 187  
Utica, NE 68456-0187  
402-534-2321  
FAX 402-534-2291

Tim DeWaard  
Superintendent  
402-534-2291

Colin Borgen  
Secondary Principal

Dean Davis  
Activities Director

Marni Parrack  
Elementary Principal

Bob Fish  
Counselor

John McClarnen  
Special Services

## CENTENNIAL BOARD OF EDUCATION Tax Request Hearing September 14, 2015

Notice of special meeting was published in the York News Times on September 8, 2015.

Meeting was called to order at 8:21 p.m. with all board members present. Administrators present were Mr. DeWaard, Mr. Borgen, Mrs. Parrack and Mr. McClarnen.

Acknowledged the purpose of the meeting was to hear support, opposition, criticism, suggestions or observations of taxpayer relating to the final tax request.

Meeting adjourned at 8:23 p.m.

Douglas Tonniges, Secretary  
Centennial Board of Education

DT:mr

# CENTENNIAL PUBLIC SCHOOL

1301 Centennial Avenue  
P.O. Box 187  
Utica, NE 68456-0187  
402-534-2321  
FAX 402-534-2291

Tim DeWaard  
Superintendent  
402-534-2291

Colin Bargaen  
Secondary Principal

Dean Davis  
Activities Director

Marni Parrack  
Elementary Principal

Bob Fish  
Counselor

John McClarnen  
Special Services

## CENTENNIAL BOARD OF EDUCATION Budget Hearing September 14, 2015

Notice of special meeting was published in the York News Times on September 8, 2015.

Meeting was called to order at 8:00 p.m. with all board members present. Administrators present were Mr. DeWaard, Mr. Bargaen, Mrs. Parrack and Mr. McClarnen. Guest was Robert Richert.

Acknowledged the purpose of the meeting was to hear support, opposition, criticism, suggestions or observations of taxpayer relating to the proposed 2015-2016 budget and to consider amendments relative thereto.

Meeting adjourned at 8:04 p.m.

Douglas Tonniges, Secretary  
Centennial Board of Education

DT:mr

**Board Report for Newspaper**  
**OCTOBER 2015**

<u>Vendor Name</u>	<u>Vendor Description</u>	<u>Amount</u>
AMAZON.COM	TEXTBOOKS	15.54
APPLE	SUPPLIES	66.96
ARAMARK	SUPPLIES	428.01
AUTO VALUE PARTS STORES	PARTS/SUPPLIES	174.27
BAKER & TAYLOR	LIBRARY BOOKS	2,065.65
BAYLOR TEST PREP	SERVICES	8,250.00
BEAVER HARDWARE	PARTS	1,730.55
BETTER CLOUD, INC	SOFTWARE	1,034.00
BOSS, MIKAELA	REIMBURSEMENT	87.82
BRONCO SPUR	SUPPLIES	130.35
CAPITOL ONE COMMERCIAL	SUPPLIES	1,286.19
CAROLINA BIOLOGICAL SUPPLY	SUPPLIES/TEXTBOOKS	371.95
CENTENNIAL ACTIVITY FUND	DISTRICT REIMBURSEMENT	2,562.60
CENTRAL NEBRASKA REHABILITATION SERVICES	PHYSICAL THERAPY	9,218.33
CENTRAL VALLEY AG	FUEL	5,207.54
CGSMUSIC	GENERAL REPAIR	498.52
CINDY REDFIELD	REIMBURSEMENT	7.50
CORNHUSKER INT. TRUCKS INC	EQUIP/MAIN	3,031.42
CULLIGAN OF CRETE	SUPPLIES	132.50
DAVID CITY PUBLIC SCHOOLS	PSYCH SERVICES	5,381.01
EAKES OFFICE SOLUTIONS	SUPPLIES	52.99
EGAN SUPPLY CO	SUPPLIES	565.48
ELECTRICAL ENGINEERING & EQUIPMENT	SUPPLIES	75.15
ESU #6	CONTRACTED SERVICES/SUPPLIES	4,796.32
EVERBIND	TEXTBOOKS	371.00
FASTENAL COMPANY	SUPPLIES	925.13
GOPHER	EQUIP	1,085.81
GOVCONNECTION, INC	COMPUTER EQUIPMENT	733.57
HENRY, SHANNON	CONTRACTED SERVICES	8,088.00
HIRERIGHT SOLUTIONS INC	PHYSICAL/TESTING	28.00
INLAND TRUCK PARTS CO	PARTS	864.56
J.W. PEPPER & SON, INC	SHEET MUSIC	193.99
JOSTENS	SUPPLIES	311.51
KONICA MINOLTA BUSINESS SOLUTIONS	EQUIP MAIN	1,419.64
KSB SCHOOL LAW	LEGAL SERVICE	300.00
LAVELLE, ETHAN	SUPPLIES	6.00
LIBRARY STORE, INC, THE	SUPPLIES	179.85
LIFE TRACK SERVICES	STAFF DEV	445.50
MATHESON TRI-GAS INC	SUPPLIES	483.95
MCCORMICK'S HEATING & AIR CONDITIONING	MAINTENCE	4,815.60
MCGRAW-HILL SCHOOL EDUCATION	TEXTBOOKS	1,117.12
MEAD LUMBER - YORK	SUPPLIES	3,194.34
MEININGER FIRE PROTECTION, INC	REPAIRS	2,703.00
MEMORIAL HEALTH CARE SYSTEMS	PHYSICALS	525.00

**Board Report for Newspaper**  
**OCTOBER 2015**

<u>Vendor Name</u>	<u>Vendor Description</u>	<u>Amount</u>	
MIDWEST SYMPOSIUM	REGISTRATION	752.25	
MILLER SEED & SUPPLY	SUPPLIES	1,844.25	
NACIA	STAFF DEV	130.00	
NANTKES, JENNIFER	CONTRACTED SERVICES	389.37	
NCS PEARSON INC	SUPPLIES	1,292.50	
NE COUNCIL OF SCHOOL ADMIN	FEES	125.00	
NEBRASKA CENTRAL EQUIPMENT, INC	SUPPLIES	2,106.59	
NECO	EQUIP MAIN	146.70	
NOVEL IDEAS, INC	TEXTBOOKS	901.60	
PAC N SAVE	FOOD/SUPPLIES	28.26	
PAYFLEX	FEES	957.40	
PELTZ, BRITTNI	REIMBURSEMENT	200.10	
PIONEER PUB CO	SUPPLIES	106.08	
POCKET FULL OF THERAPY	SUPPLIES	115.22	
POTTER REPAIR	REPAIRS	383.32	
PRESTO-X CO	EXT FEE	100.43	
PROTEX CENTRAL	EQUIP MAINTENANCE	114.00	
QUILL CORPORATION	SUPPLIES/EQUIP	94.60	
RICHTERS JR, ROY	REIMBURSEMENT	7.50	
RICHTERS, NANCY	REIMBURSEMENT	65.00	
SCHOOL HEALTH CORPORATION	MEDICAL	318.55	
SCHOOL SPECIALTY, INC	SUPPLIES	757.04	
SEWARD COUNTY PPD	ELECTRICITY	12,945.06	
SIOUX CITY TRUCK SALES, INC.	PARTS/REPAIR	32.60	
SLADKY, ASHLEE	REIMBURSEMENT	193.14	
SNUG VEST - WEARABLE TERAPEUTICS, INC	SUPPLIES	770.00	
SOCIAL THINKING	SUPPLIES	219.56	
SOURCEGAS	FUEL	663.85	
STATE OF NEBRASKA	TELEPHONE	227.47	
STRIV, INC	PUPIL SERVICES	1,975.00	
STUHR MUSEUM EDUCATION DEPT	FEES	182.00	
SUDRLA, PATTY	CONTRACTED SERVICES	1,849.73	
TAYLOR MUSIC, INC	SUPPLIES	80.00	
TIME FOR KIDS	SUBSCRIPTION	133.80	
TRUCK CENTER COMPANIES	PARTS	384.70	
UNITE PRIVATE NETWORKS, LLC	LEASE	374.33	
UTICA PARTS & SERVICE	REPAIRS	331.00	
VERIZON WIRELESS	CELL PHONE	222.03	
VILLAGE OF UTICA	WATER/SEWER	1,194.83	
WALMART COMMUNITY/RFCSLLC	SUPPLIES	64.72	
WASTE CONNECTIONS OF NE	TRASH REMOVAL	1,553.86	
WINDSTREAM	TELEPHONE	788.52	
WOODWORKER'S SUPPLY INC	SUPPLIES	351.66	
YORK NEWS TIMES	ADV/PRINTING	1,116.00	
	<b>Fund Total:</b>		<b>111,551.84</b>
	<b>Checking Account Total:</b>		<b>111,551.84</b>

**BUILDING FUND**

Centennial Activity Fund	\$11,340.00
Pieper Plumbing & Well Drilling	18,772.00
Wy-Ad Utility Contractors, Inc	26,075.70
Total	\$56,187.70

**DEPRECIATION FUND**

Lee's Refrigeration	\$3,866.00
---------------------	------------

**CENTENNIAL ELEMENTARY ACTIVITY ACCOUNT**

Sep-15

<b>ACCOUNT</b>	<b>Aug-15 BALANCE</b>	<b>RECEIPTS</b>	<b>DISBURSEMENTS</b>	<b>Sep-15 BALANCE</b>
<b>BOOKS</b>	<b>\$172.60</b>	<b>\$462.50</b>	<b>\$440.50</b>	<b>\$194.60</b>
<b>BOXTOPS</b>	<b>\$3,379.34</b>			<b>\$3,379.34</b>
<b>PICTURES</b>	<b>\$1,461.67</b>			<b>\$1,461.67</b>
<b>GENERAL</b>	<b>\$2,246.97</b>	<b>\$1,453.56</b>	<b>\$1,675.25</b>	<b>\$2,025.28</b>
<b>BACKPACK</b>	<b>\$15,850.14</b>			<b>\$15,850.14</b>
<b>READING CLASSIC</b>				
<b>TOTAL</b>	<b>\$23,110.72</b>	<b>\$1,916.06</b>	<b>\$2,115.75</b>	<b>\$22,911.03</b>

**Elementary Activity Bank Balance: \$22,931.03**

**Outstanding Checks: \$20.00**

**Balance: \$22,911.03**

**Elementary Activity Savings Account \$2,955.74**

**Interest on Activity Savings Account \$1.49**

**Other**

**Total in Savings: \$2,957.23**

September 30, 2015

	Sept. 1 Balance	Received	Expenditures	Oct. 1 Balance
ART	\$4.09			\$4.09
ATHLETICS	-\$30,457.49	\$36,871.00	\$5,214.15	\$1,199.36
BAND TRIP	\$2,903.25			\$2,903.25
BOOSTER CLUB	\$11,250.00		\$11,250.00	\$0.00
BOYS BASKETBALL	\$324.80	\$174.46	\$249.00	\$250.26
BRONCO STORE	\$2,895.43	\$188.07	\$267.52	\$2,815.98
C CLUB	\$419.02			\$419.02
CLASS '14	\$1,115.46			\$1,115.46
CLASS '15	\$26.69			\$26.69
CLASS '16	\$1,041.74			\$1,041.74
CLASS '17	\$3,126.19			\$3,126.19
CLASS '18	\$263.97			\$263.97
CLASS '19	\$0.00			\$0.00
CONC. MAN.	\$0.00	\$477.70		\$477.70
CONCESSIONS	\$27,359.15	\$6,490.60	\$6,622.67	\$27,227.08
CROSS COUNTRY	\$119.35	\$352.00		\$471.35
DANCE TEAM	\$1,776.24			\$1,776.24
DIST. EVENTS	\$6,841.08		\$64.18	\$6,776.90
DRAMA	\$6,610.56			\$6,610.56
FBLA	\$1,352.76		\$127.57	\$1,225.19
FCA	-\$39.95			-\$39.95
FCCLA	\$2,418.64	\$480.26	\$310.99	\$2,587.91
FFA	\$9,288.58	\$7,304.00	\$9,003.39	\$7,589.19
FOOTBALL	\$5,834.39	\$20.00	\$3,636.75	\$2,217.64
GENERAL	\$7,968.97	\$71,697.53	\$71,011.00	\$8,655.50
GIRLS BASKETBALL	\$529.17			\$529.17
GOLF	-\$37.86			-\$37.86
INSTR.	-\$1,154.95	\$768.74	\$1,035.20	-\$1,421.41
JH GIRLS B-BALL	\$1,827.20			\$1,827.20
JH YEARBOOK	-\$52.77			-\$52.77
LIBRARY	\$285.40			\$285.40
MAT GIRL	\$562.13	\$375.39		\$937.52
NHS	\$40.10			\$40.10
ONE ACT	-\$25.54			-\$25.54
SCIENCE	\$390.81			\$390.81
SHOP/TECH	\$1,830.68	\$35.00		\$1,865.68
SHOW CHOIR	-\$1,705.35	\$500.00	\$938.78	-\$2,144.13
SOFTBALL	\$600.08	\$5,146.00	\$690.74	\$5,055.34
SPANISH CLUB	\$0.07			\$0.07
SPEECH	-\$460.14			-\$460.14
ST. COUN.	\$728.59	\$1,349.05	\$1,157.57	\$920.07
STUDENT FEES	\$0.00			\$0.00
TRACK	\$451.53			\$451.53
VOCAL	-\$2,288.75	\$243.50	\$180.00	-\$2,225.25
VOLLEYBALL	\$691.87	\$8,489.00	\$6,008.20	\$3,172.67
WRESTLING	\$3,434.35			\$3,434.35
WT. ROOM	\$92.66			\$92.66
YEARBOOK	-\$17,488.72	\$771.00	\$352.45	-\$17,070.17
<b>TOTAL</b>		<b>\$141,733.30</b>	<b>\$118,120.16</b>	<b>\$74,306.62</b>

CENTENNIAL BANK BALANCE \$97,499.15  
 OUTSTANDING CHECKS \$23,192.53  
 OUTSTANDING DEPOSITS

TOTAL \$74,306.62

## Year To Date

	Sept. 1, 2015 Balance	Received	Expenditures	YTD Balance
ART	\$4.09	\$0.00	\$0.00	\$4.09
ATHLETICS	-\$30,457.49	\$36,871.00	\$5,214.15	\$1,199.36
BAND TRIP	\$2,903.25	\$0.00	\$0.00	\$2,903.25
BOOSTER CLUB	\$11,250.00	\$0.00	\$11,250.00	\$0.00
BOYS BASKETBALL	\$324.80	\$174.46	\$249.00	\$250.26
BRONCO STORE	\$2,895.43	\$188.07	\$267.52	\$2,815.98
C CLUB	\$419.02	\$0.00	\$0.00	\$419.02
CLASS '14	\$1,115.46	\$0.00	\$0.00	\$1,115.46
CLASS '15	\$26.69	\$0.00	\$0.00	\$26.69
CLASS '16	\$1,041.74	\$0.00	\$0.00	\$1,041.74
CLASS '17	\$3,126.19	\$0.00	\$0.00	\$3,126.19
CLASS '18	\$263.97	\$0.00	\$0.00	\$263.97
CLASS '19	\$0.00	\$0.00	\$0.00	\$0.00
CONC. MAN,	\$0.00	\$477.70	\$0.00	\$477.70
CONCESSIONS	\$27,359.15	\$6,490.60	\$6,622.67	\$27,227.08
CROSS COUNTRY	\$119.35	\$352.00	\$0.00	\$471.35
DANCE TEAM	\$1,776.24	\$0.00	\$0.00	\$1,776.24
DIST. EVENTS	\$6,841.08	\$0.00	\$64.18	\$6,776.90
DRAMA	\$6,610.56	\$0.00	\$0.00	\$6,610.56
FBLA	\$1,352.76	\$0.00	\$127.57	\$1,225.19
FCA	-\$39.95	\$0.00	\$0.00	-\$39.95
FCCLA	\$2,418.64	\$480.26	\$310.99	\$2,587.91
FFA	\$9,288.58	\$7,304.00	\$9,003.39	\$7,589.19
FOOTBALL	\$5,834.39	\$20.00	\$3,636.75	\$2,217.64
GENERAL	\$7,968.97	\$71,697.53	\$71,011.00	\$8,655.50
GIRLS BASKETBALL	\$529.17	\$0.00	\$0.00	\$529.17
GOLF	-\$37.86	\$0.00	\$0.00	-\$37.86
INSTR.	-\$1,154.95	\$768.74	\$1,035.20	-\$1,421.41
JH GIRLS B-BALL	\$1,827.20	\$0.00	\$0.00	\$1,827.20
JH YEARBOOK	-\$52.77	\$0.00	\$0.00	-\$52.77
LIBRARY	\$285.40	\$0.00	\$0.00	\$285.40
MAT GIRL	\$562.13	\$375.39	\$0.00	\$937.52
NHS	\$40.10	\$0.00	\$0.00	\$40.10
ONE ACT	-\$25.54	\$0.00	\$0.00	-\$25.54
SCIENCE	\$390.81	\$0.00	\$0.00	\$390.81
SHOP/TECH	\$1,830.68	\$35.00	\$0.00	\$1,865.68
SHOW CHOIR	-\$1,705.35	\$500.00	\$938.78	-\$2,144.13
SOFTBALL	\$600.08	\$5,146.00	\$690.74	\$5,055.34
SPANISH CLUB	\$0.07	\$0.00	\$0.00	\$0.07
SPEECH	-\$460.14	\$0.00	\$0.00	-\$460.14
ST. COUN.	\$728.59	\$1,349.05	\$1,157.57	\$920.07
STUDENT FEES	\$0.00	\$0.00	\$0.00	\$0.00
TRACK	\$451.53	\$0.00	\$0.00	\$451.53
VOCAL	-\$2,288.75	\$243.50	\$180.00	-\$2,225.25
VOLLEYBALL	\$691.87	\$8,489.00	\$6,008.20	\$3,172.67
WRESTLING	\$3,434.35	\$0.00	\$0.00	\$3,434.35
WT. ROOM	\$92.66	\$0.00	\$0.00	\$92.66
YEARBOOK	-\$17,488.72	\$771.00	\$352.45	-\$17,070.17
	\$50,693.48	\$141,733.30	\$118,120.16	\$74,306.62
			Total	\$74,306.62

October 2015  
September 2015 Bank Statement

**CENTENNIAL PUBLIC SCHOOL INVESTMENTS**

FUND	BANK	TYPE OF INVESTMENT	INT. RATE AMOUNT	INT. REC
Lunch Fund	First Bank of Utica	Checking 180000	\$11,936.09	
		Total	\$11,936.09	
Depreciation Fund	Farmers & Merchants	MMA 436 949	\$203,455.54	\$25.19
		Total	\$203,455.54	
Unemployment Ins.	Cornerstone Bank	Certificate 66245	\$53,496.04	
	Cornerstone Bank	MMA 81190	\$11,893.13	\$0.91
		Total	\$65,389.17	
2013 Bond	Cornerstone Bank	Construction Fund	\$0.00	
Building Fund	First Bank of Utica	Checking 18 064 6	\$541,491.31	\$237.13
		Qualified Cap Bond 180554	\$13,332.35	\$1.69
		Total	\$554,823.66	
General Fund	Farmers & Merchants	MMA 436 436	\$92,687.81	\$11.43
	Farmers & Merchants	CD 71455 24mo	\$123,520.62	
	Farmers & Merchants	19 mo 2-2016	\$120,557.07	
	First Bank of Utica	MMA 18 065 3 General Acct	\$103,935.09	\$42.70
	First Bank of Utica	CD16282	\$122,284.32	
	Cornerstone Bank	MMA 300079871	\$56,232.71	\$4.31
	Cornerstone Bank	CD 16634 24mo 02/17/2015	\$130,932.48	
	Cornerstone Bank	CD 71241 16 mo 4/15/15	\$130,100.05	
	York State, Gresham	MMA 1027291	\$55,547.13	\$6.16
	York State, Gresham	CD 5204	\$190,416.13	
	York State, Gresham	CD 5215	\$129,056.08	\$128.37
	First Bank of Utica	PayFlex Acct	\$22,075.98	
		Total	\$1,277,345.47	\$192.97
	First Bank of Utica	Checking 180505	\$963,953.35	\$184.29
		Total	\$963,953.35	
		Total Invested All Accounts Combined	<u>\$3,076,903.28</u>	
		Total amount invested at Farmers & Merchants	\$540,221.04	
		Total amount invested at First Bank of Utica	\$1,779,008.49	
		Total amount invested at Cornerstone Bank, Waco	\$382,654.41	
		Total amount invested at York State, Gresham	\$375,019.34	
		Total Invested	<u>\$3,076,903.28</u>	

CENTENNIAL & ST. PAUL'S ENROLLMENTS  
2015-16  
(Last Friday in September)

	CENTENNIAL			ST. PAUL'S			TOTAL		
	B	G	T	B	G	T	B	G	T
GR.									
PK	17	25	42	8	11	19	25	36	61
K	16	13	29	2	3	5	18	16	34
1	16	6	22	3	1	4	19	7	26
2	11	21	32	5	6	11	16	27	43
3	13	16	29	9	2	11	22	18	40
4	13	15	28	6	8	14	19	23	42
5	21	9	30	5	4	9	26	13	39
6	15	12	27	6	3	9	21	15	36
S.T.	122	117	239	44	38	82	166	155	321
7	16	13	29	1	4	5	17	17	34
8	8	19	27	4	3	7	12	22	34
S.T.	24	32	56	5	7	12	29	39	68
9	29	16	45				29	16	45
10	12	16	28				12	16	28
11	23	17	40				23	17	40
12	20	13	33				20	13	33
S.T.	84	62	146				84	62	146
K-12 TOT.	213	186	399				254	220	474

CENTENNIAL PUBLIC SCHOOL

COURSE APPROVAL FORM

The negotiated agreement between the CEA and Board of Education requires, in part, teacher to obtain advance approval from the administration/Board of Education for courses applicable to horizontal movement on the salary schedule.

Please complete this form and return to Tim DeWaard at your earliest convenience. Forms must be received the Wednesday prior to the Board meeting in order to be considered by the Board that month.

TO: The Centennial Administration and Board of Education

I hereby request advance approval of the following course(s). It is understood that said approval would allow me to apply this course(s) for horizontal movement on the salary schedule.

<u>Course No.</u>	<u>Course Title</u>	<u>Hrs.</u>	<u>College</u>	<u>Undergrad. or Grad. Level</u>	<u>Planned Grad. Program Applies</u>
MIS 802	Management Info Systems Seminar	3	UNK	Grad	✓

Course Description:

Course will enable students to look at roles of information systems to support business operations, quality management, and decision making processes

<u>Course No.</u>	<u>Course Title</u>	<u>Hrs.</u>	<u>College</u>	<u>Undergrad. or Grad. Level</u>	<u>Planned Grad. Program Applies</u>
TE 804	Curriculum Development in Multicultural Ed.	3	UNK	Grad	✓

Course Description:

Students will learn to evaluate, create, & implement multicultural lesson plans, unit plans, classroom rules, and school policies.

<u>Course No.</u>	<u>Course Title</u>	<u>Hrs.</u>	<u>College</u>	<u>Undergrad. or Grad. Level</u>	<u>Planned Grad. Program Applies</u>
MKT 838P	Consumer Behavior	3	UNK	Grad	✓

Course Description:

Course provides a detailed analysis of why & how people buy products based on micro and macro level factors & influences.

The addition of this course(s) would make me eligible for horizontal movement effective with the 2016-17 school year.

Thank you for considering this request.

Sincerely,

G. B/L

(Signed)

9/28/15

(Date)

CENTENNIAL PUBLIC SCHOOL

COURSE APPROVAL FORM

The negotiated agreement between the CEA and Board of Education requires, in part, teacher to obtain advance approval from the administration/Board of Education for courses applicable to horizontal movement on the salary schedule.

Please complete this form and return to Tim DeWaard at your earliest convenience. Forms must be received the Wednesday prior to the Board meeting in order to be considered by the Board that month.

TO: The Centennial Administration and Board of Education

I hereby request advance approval of the following course(s). It is understood that said approval would allow me to apply this course(s) for horizontal movement on the salary schedule.

<u>Course No.</u>	<u>Course Title</u>	<u>Hrs.</u>	<u>College</u>	<u>Undergrad. or Grad. Level</u>	<u>Planned Grad. Program Applies</u>
TE 846	Diagnosis and Correction of Reading Difficulty	3	UNK	Grad Level	Aug 2016. PK-12 Reading

Course Description:  
This course focuses on research-based practice in literacy instruction with an emphasis on reading diagnoses for the purpose of the adjustment of instruction to benefit students with reading difficulty.

<u>Course No.</u>	<u>Course Title</u>	<u>Hrs.</u>	<u>College</u>	<u>Undergrad. or Grad. Level</u>	<u>Planned Grad. Program Applies</u>
-------------------	---------------------	-------------	----------------	----------------------------------	--------------------------------------

Course Description:

<u>Course No.</u>	<u>Course Title</u>	<u>Hrs.</u>	<u>College</u>	<u>Undergrad. or Grad. Level</u>	<u>Planned Grad. Program Applies</u>
-------------------	---------------------	-------------	----------------	----------------------------------	--------------------------------------

Course Description:

The addition of this course(s) would make me eligible for horizontal movement effective with the 2016-2017 school year.

Thank you for considering this request.

Sincerely,

Mikaela Boss  
(Signed)

9/12/15  
(Date)

CENTENNIAL PUBLIC SCHOOL

COURSE APPROVAL FORM

The negotiated agreement between the CEA and Board of Education requires, in part, teacher to obtain advance approval from the administration/Board of Education for courses applicable to horizontal movement on the salary schedule.

Please complete this form and return to Tim DeWaard at your earliest convenience. Forms must be received the Wednesday prior to the Board meeting in order to be considered by the Board that month.

TO: The Centennial Administration and Board of Education

I hereby request advance approval of the following course(s). It is understood that said approval would allow me to apply this course(s) for horizontal movement on the salary schedule.

<u>Course No.</u>	<u>Course Title</u>	<u>Hrs.</u>	<u>College</u>	<u>Undergrad. or Grad. Level</u>	<u>Planned Grad. Program Applies</u>
EDI 698	TEACH EFFECTIVE TEAM-ANITA ARCHER	3	DOANE	GRAD	

Course Description:

TEAM - WAS ANITA ARCHER'S COURSE ON EFFECTIVE TEACHING. I TOOK THIS COURSE THIS LAST SUMMER ASSUMING THE HOURS WERE OKED BECAUSE THE COURSE WAS OFFERED THROUGH SCHOOL FOR CREDIT.

<u>Course No.</u>	<u>Course Title</u>	<u>Hrs.</u>	<u>College</u>	<u>Undergrad. or Grad. Level</u>	<u>Planned Grad. Program Applies</u>
-------------------	---------------------	-------------	----------------	----------------------------------	--------------------------------------

Course Description:

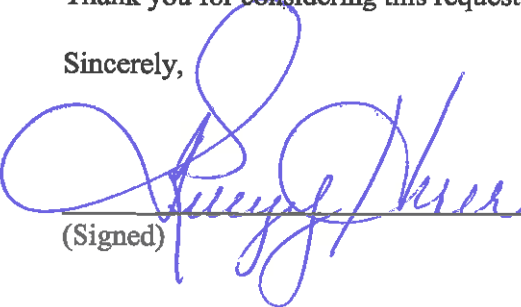
<u>Course No.</u>	<u>Course Title</u>	<u>Hrs.</u>	<u>College</u>	<u>Undergrad. or Grad. Level</u>	<u>Planned Grad. Program Applies</u>
-------------------	---------------------	-------------	----------------	----------------------------------	--------------------------------------

Course Description:

The addition of this course(s) would make me eligible for horizontal movement effective with the school year. NO - 2015/16  
or 2016/17

Thank you for considering this request.

Sincerely,

  
\_\_\_\_\_  
(Signed)

9/16/15  
\_\_\_\_\_  
(Date)

CENTENNIAL PUBLIC SCHOOL

COURSE APPROVAL FORM

The negotiated agreement between the CEA and Board of Education requires, in part, teacher to obtain advance approval from the administration/Board of Education for courses applicable to horizontal movement on the salary schedule.

Please complete this form and return to Tim DeWaard at your earliest convenience. Forms must be received the Wednesday prior to the Board meeting in order to be considered by the Board that month.

TO: The Centennial Administration and Board of Education

I hereby request advance approval of the following course(s). It is understood that said approval would allow me to apply this course(s) for horizontal movement on the salary schedule.

<u>Course No.</u>	<u>Course Title</u>	<u>Hrs.</u>	<u>College</u>	<u>Undergrad. or Grad. Level</u>	<u>Planned Grad. Program Applies</u>
EDU-603-3	Research Methods	3	Doane	Grad.	Curriculum and instruction
<u>Course Description:</u> Attached					

<u>Course No.</u>	<u>Course Title</u>	<u>Hrs.</u>	<u>College</u>	<u>Undergrad. or Grad. Level</u>	<u>Planned Grad. Program Applies</u>
<u>Course Description:</u>					

<u>Course No.</u>	<u>Course Title</u>	<u>Hrs.</u>	<u>College</u>	<u>Undergrad. or Grad. Level</u>	<u>Planned Grad. Program Applies</u>
<u>Course Description:</u>					

The addition of this course(s) would make me eligible for horizontal movement effective with the \_\_\_\_\_ school year.

Thank you for considering this request.

Sincerely,

Molly Pr...  
(Signed)

9-14-15  
(Date)

## Section Information

**Title**            **Research Methods**  
**Course**           **EDU-603-3**  
**Section**  
**Number**

**Description**     The course includes a comparative examination of qualitative and quantitative research methods. Upon completion of the course, the graduate student has selected a research questions relevant to a K-12 classroom teaching assignment, reviewed literature about the question, and designed a project or thesis that includes a plan to evaluate the effectiveness of the educational innovational related to the research question.

**Credits**   3.00   CEUs

**Start Date**   25 August 2015   **End Date**   17 November 2015

**Academic**    **GR - Graduate**  
**Level**

### Meeting Information

08/25/2015-11/17/2015 Lecture Tuesday 05:30PM - 09:00PM, Education - Graduate, Room SOUTH

Faculty name	Phone	Extension	E-mail address	Instructional Method
Susan J. Rasmussen	402-466-4774		sue.rasmussen@doane.edu	Lecture
Caroline K. Miller	402-466-4774		caroline.miller@doane.edu	Lecture

### Requisite Courses

None

### Requisite Noncourses

None

### Required Concurrent Sections

None

### Recommended Concurrent Sections

None

### Supplies

BOOK - Textbook

Title	Author	Publisher	Copyright	ISBN	Price	Req.	Comments
To Be Determined							

# PROPOSAL



22145 W. Maple Road, PO Box 131  
Elkhorn, NE, 68022  
Phone 402-289-4126  
Fax 402-289-4263

**To: Centennial School District**

**Project:** Physical Access Control  
RFP

Dan Tesar  
1301 Centennial Avenue  
Utica, NE 68456  
United States

Proposal Number: PCIQ8061

**Date:** 10/09/15

## Scope of Work:

Prime Communications, Inc. shall provide all labor and material to install eleven door of access control with three door ajar alarmed doors. Prime will install a Genetec Synergis access control software that will be hosted on the customer's virtual server. Supply with the system will be 100 access cards that are an iClass format.

Prime will install IP based single door controllers that are PoE powered. The doors will be equipment with a card reader, door contact and electric strike. Doors 1, 2, 9, 10 and 11 have existing locking hardware that will be reused with the new access system. The customer will provide all cat6 cable and installation of cable for the project. The customer will also provide all PoE power required for the door controllers. Three doors will have door ajar alarms that will locally sound if a door is propped open. Prime will mount, terminate and test all hardware equipment. Prime will commission the system and provide a onetime two hour training session upon the completion of the project.

Line	Qty	Description	Unit Price	Ext. Price
1		<b>Genetec Software</b>		
2	1	Genetec Security Center (GSC) Base Package - Version 5.3 which includes: 1 Directory, 5 Security Desk client connections (incl. Web Client),	\$0.00	\$0.00

This is a confidential and proprietary document of Prime Communications, Inc. In receipt of this document the recipient agrees not to reproduce or transmit this document or the information contained here.

Line	Qty	Description	Unit Price	Ext. Price
		Plan Manager Basic, Alarm Management, Advanced Reporting, System Partitioning, Zone Monitoring, IO Modules Support, Email Support, Macros Support (actual macros sold separately), Support for server virtualization, all supported languages. Must purchase a Synergis, Omnicast, or AutoVu base package to enable access control, video, or LPR content respectively.		
3	1	GSC Synergis Standard Package which includes: 1 Access Manager. Max. 64 readers, Max. 1 Access Manager, Max. 5 clients, Badge Designer.	\$857.14	\$857.14
4		<b>Prox Cards</b>		
5	100	iCLASS Contactless Smart Card, 2k bit with 2 application areas (pre-configured), plain white front/back, inkjetted sequential matching internal/external numbering, no slot punch	\$3.31	\$331.00
6		<b>Door Controllers</b>		
7	11	E1A EDGE EVO EH400-K Standard Controller. Single door, IP-based controller for Host-based systems. Single physical package. Door inputs/outputs are 4 external inputs, 2 outputs; on-board optical tamper (standard mount). One Wiegand/Clock-and-Data reader interface. Hi-O compliant. For use indoor or outside in weatherproof enclosure. US single-gang, US double-gang or EU/APAC 60mm mount.	\$407.14	\$4,478.54
8		<b>Door Hardware</b>		
9	2	R10 ICLASS SE REV E LF OFF HF STD/SIO/SEOS WIEG BLK PIG STD-1 LED RED FLSH GRN BZR ON CSN 32-BIT MSB IPM OFF	\$76.14	\$152.28
10	9	RDR, R40, ICLASS, SE E, LF OFF, HF STD/SIO/SEOS, WIEG, PIG, BLK, STD-1, LED RED, FLSH GRN, BZR ON, CSN 32-BIT MSB, IPM OFF	\$148.50	\$1,336.50
11	2	Electric Strike, w/ Latchbolt Monitor, 9400 Series, 1/2 Inch Slim-Line Form, Internally Mounted Solenoid, Accomodates Up To 1/2 Inch Pullman Latch, Stainless Steel Construction, Surface Mounted w/ Cover, Satin Stainless Steel Finish, Steel, Aluminum Or Woo	\$322.23	\$644.46
12	4	Electric Strike, Genesis, Dual Locking, LBM Option, 630 Satin Stainless Steel Finish, Surface Mounted, UL1034 Burglary-Resistant Rated, 12 VDC Or 24 VAC, For 9600 Series	\$322.23	\$1,288.92
13	11	Recessed Door Contact 3/4" recessed with 3/4" magnet and terminals 1/2" gap in steel	\$5.54	\$60.94
14	5	CAMDEN MARKETING CX12 SWITCH NETWORK	\$99.46	\$497.30
15	200	4 Element Composite Cable CMP Yellow Jacket (4 Shields)	\$0.90	\$180.00
16		<b>Door Ajar Alarms</b>		
17	5	DCE-18108 BATTERY POWERED DOOR	\$227.13	\$1,135.65

This is a confidential and proprietary document of Prime Communications, Inc. In receipt of this document the recipient agrees not to reproduce or transmit this document or the information contained here.

Line	Qty	Description	Unit Price	Ext. Price
------	-----	-------------	------------	------------

Material SubTotal	\$10,962.73
Labor, Mileage, Warranty, Shipping & Misc.	\$15,579.82
SubTotal	\$26,542.55
Tax	\$0.00
<b>Total</b>	<b>\$26,542.55</b>

### Exclusions/Assumptions

- Sales Tax
- Fire Alarm Relay Interface
- Cat6 Cabling and Cabling Services
- PoE Power
- Server & Workstations
- Battery Backup Power

This is a confidential and proprietary document of Prime Communications, Inc. In receipt of this document the recipient agrees not to reproduce or transmit this document or the information contained here.

<b>Line</b>	<b>Qty</b>	<b>Description</b>	<b>Unit Price</b>	<b>Ext. Price</b>
		Payment Terms		
		Net 30. Material is invoiced upon receipt. Labor will be invoiced monthly		

---

This is a confidential and proprietary document of Prime Communications, Inc. In receipt of this document the recipient agrees not to reproduce or transmit this document or the information contained here.

Centennial School District

Prime Communications, Inc.

Signature:

Signature:

\_\_\_\_\_  
Name:

\_\_\_\_\_  
Name:

\_\_\_\_\_  
Title:

\_\_\_\_\_  
Title:

\_\_\_\_\_  
Date:

\_\_\_\_\_  
Date:

\_\_\_\_\_  
Customer PO# (if applicable):

\_\_\_\_\_

## TERMS AND CONDITIONS OF CONTRACT FOR SALE

1. **CONTRACT BETWEEN BUY AND SELLER:** This document constitutes the full understanding of the parties and no terms, conditions, understanding or agreement purporting to modify or vary the terms of this document shall be binding unless hereafter made in writing and signed by the parties to be bound.

2. **DELAYS:** Seller shall not be responsible for any failure or delay in delivery due to fires, floods, labor troubles whether or not due to the fault of Seller, acts of God, breakdowns, delay of carrier, total or partial failure for any reason of usual sources of supply or transportation, requirements or request of any government or subdivision thereof, or any similar or dissimilar cause beyond Seller's control. In the event of inability of Seller, for any cause beyond Seller's control to supply the total demands for any material specified in this order, Seller may allocate its available supply among any or all Buyers, including new customers, subsidiaries, affiliates and departments of Seller, on such basis as Seller, in its sole discretion, may decide upon, without liability for any failure to perform the contract which may be a consequence thereof.

3. **LIABILITY:** Seller's liability shall be limited to actual damages sustained by Buyer, but in no event to exceed the purchase price of the particular goods involved in the occurrence giving rise hereto.

4. **TOLERANCE:** The total order and each delivery hereunder shall be subject to standard shipping tolerances as contained in the Manufacturers products catalog in effect at time of delivery.

5. **WARRANTY:** (a) Seller warrants title and that products sold to Buyer shall be free from defects in material and workmanship and shall conform to specifications for a period of one (1) year from receipt at destination for complete units and parts and assemblies.

(b) Warranties on goods sold but not manufactured by the Seller are expressly limited to the terms of warranties of the manufacturer of such goods.

(c) **SELLER MAKES NO REPRESENTATION OR WARRANTY OF ANY KIND, EXPRESS OR IMPLIED, AS TO MERCHANT ABILITY, FITNESS FOR PARTICULAR PURPOSE OR ANY OTHER MATTER.** Upon receipt of definite shipping instructions, Buyer shall return, transportation prepaid, all defective material, or material not conforming to specifications, to Seller, after inspection by Seller or at Seller's election, subject to inspection by Seller. Material returned by Buyer must be returned in same condition as when received by Buyer. Defective material or material not conforming to specifications, so returned shall be replaced or repaired by Seller and returned, freight prepaid, without any additional charge, or, in lieu of such replacement or repair, Seller may, at Seller's option, refund the purchase price applicable to such material. Seller agrees to pay return freight charges not exceeding the lowest rail or truck rate which would apply from the original destination on all defective material, or material not meeting specification. However, Seller shall not be obligated for such charges when material returned proves to be free from defect and to meet specifications. Material which proves to be free from defect and to meet specifications shall be held by the Seller for shipping instructions and Buyer shall furnish such instructions promptly upon request. Seller's liability shall be limited to the replacement or repair or to refunding the purchase price applicable to the defective material or material not meeting specifications. Seller shall not be liable for any consequential damages nor any loss, damages or expenses directly or indirectly arising from the use of the material.

6. **ADVICE BY SELLER:** The giving or failure to give advice or recommendation of any character by Seller shall not impose any liability upon Seller nor grant to the Buyer any license to the use of any of Seller's patents, trademarks or trade names.

7. **CREDITS:** All shipments to be made hereunder shall at all times be subject to the approval of Seller's Credit Department and, if the financial responsibility of Buyer is unsatisfactory, or becomes impaired, or if Buyer fails to make any payment in accordance with the terms of the contract, then, in any such event, Seller may defer or decline to make any shipments hereunder except upon receipt of security satisfactory to Seller or cash payments in advance, or it may terminate the contract.

8. **ASSIGNMENT:** This contract, together with all rights, liabilities and obligations arising there under, may be assigned wholly or in part by Seller to any one or more of the corporations subsidiary to or affiliated with the Seller, without the necessity of prior notice to Buyer.

9. **TAXES:** The price specified herein does not include the amount of any present or future tax applicable to the sale, manufacture, delivery, use and/or other handling of material hereunder, and any such taxes shall be paid by the Buyer.

10. **CHANGES:** Seller assumes no responsibility for any changes in the specifications outlines in the original order, unless such changes are confirmed in writing by Buyer and accepted in writing by Seller. Any price variation resulting from such changes shall become effective immediately upon the acceptance of such changes. Seller assumes no responsibility for additional costs which result from changes made by the Buyer in shipping or production schedules, if such changes cause an increase in Seller's cost or in the time of performance of this order, unless such changes are confirmed in writing by the Buyer and accepted in writing by the Seller. Additional costs arising from changes which have not been accepted in writing by the Seller will be claimed against the Buyer. Such claim is to be payable upon presentation.

11. **PRICE:** The price specified in this contract for any material may be changed by Seller upon ten (10) days written notice to Buyer. In the event Buyer is not willing to accept such change, Buyer shall so notify Seller in writing within seven (7) days from receipt of the notice of the change and that portion of this order to which such price change is applicable shall be deemed canceled unless with seven (7) days from receipt of Buyer's notice, Seller gives written notice of its election to withdraw the proposed change.

12. **MATERIALS:** If materials or equipment which the Seller is required to furnish the Buyer hereunder become unavailable either temporarily or permanently through causes beyond the control and without the fault of the Seller, then in case of temporary unavailability, the contract time shall be extended by change order for such period of time as the Seller shall be delayed by such unavailability and, in the case of permanent unavailability, the Seller shall be excused from the requirement of furnishing such materials or equipment. The Buyer agrees to pay the Seller any increase in cost between the cost of the materials or equipment which have become permanently unavailable and the cost of the closest substitute which is then reasonably available.

13. **EQUIPMENT:** Any tools or equipment which Seller constructs or acquires specifically and solely for use on Buyer's order, shall be and remain Seller's property and in Seller's sole possession and control, and any changes made by Seller therefore shall be for the use of such equipment only. When for a period of one (1) year no orders are accepted from Buyer for products to be made with such equipment, Seller may make such disposition thereof as it desires without liability to Buyer. Seller shall have no responsibility for loss or damages to such equipment or any material owned or furnished by Buyer while in Seller's possession. Tool charges designated as estimated will vary in accordance with actual cost.

14. **PATENTS:** If any material shall be manufactured or sold by Seller to meet Buyer's specifications or requirements, and is not a part of Seller's standard line offered by it to the trade generally in the usual

course of Seller's business, Buyer agrees to defend, protect and save harmless Seller against all suits at law or in equity from all damage, claims and demands for actual or alleged infringement of any United State or foreign patent and to defend any suits or actions which may be brought against Seller for any alleged infringement because of the manufacture or sale of any such material.

15. POINT OF DELIVERY: Delivery to carrier at point of shipment shall constitute delivery to Buyer and Buyer shall assume all risk for subsequent loss or damage. The fact that in some instances a different "F.O.B." point may be shown on the face hereof, or that all or a part of freight charges may be prepaid, assumed, or allowed by Seller, is for Buyer's convenience only.

16. WAIVERS: No Waiver by Seller or any breach of any provision hereof shall constitute a waiver of any other breach or of such provision. Seller's failure to object to provisions contained in any communication from Buyer shall not be deemed an acceptance of such provisions or as a waiver of the provisions of this contract.

17. CANCELLATION: This contract is subject to cancellation only upon Seller's accepting such cancellation in writing, and the effective date of such cancellation shall be the date of such acceptance. The date of

such acceptance notwithstanding, Seller shall have the right to continue the processing of the materials or articles affected to the point at which the processing can be halted with the least inconvenience to the Seller under the circumstances. Payment of cancellation charges shall be made by Buyer upon receipt of statement of same. Cancellation charges shall not exceed the purchase price of the cancelled portion of the contract.

18. CLAIMS: Any course of dealing between the parties to the contrary notwithstanding at Seller's election any claim for breach of warranty, shortage, failure or delay in delivery or otherwise shall be deemed waived by Buyer unless presented in writing to Seller within the specified warranty period in the case of claims of breach of warranty, or within sixty (60) days from date of agreed delivery in case of other claims.

19. Causes of action for breach of this contract shall not be asserted after (1) year from the date said cause of actions accrues, provided that this limitation shall not apply to actions by Seller to recover the purchase price of article sold hereunder

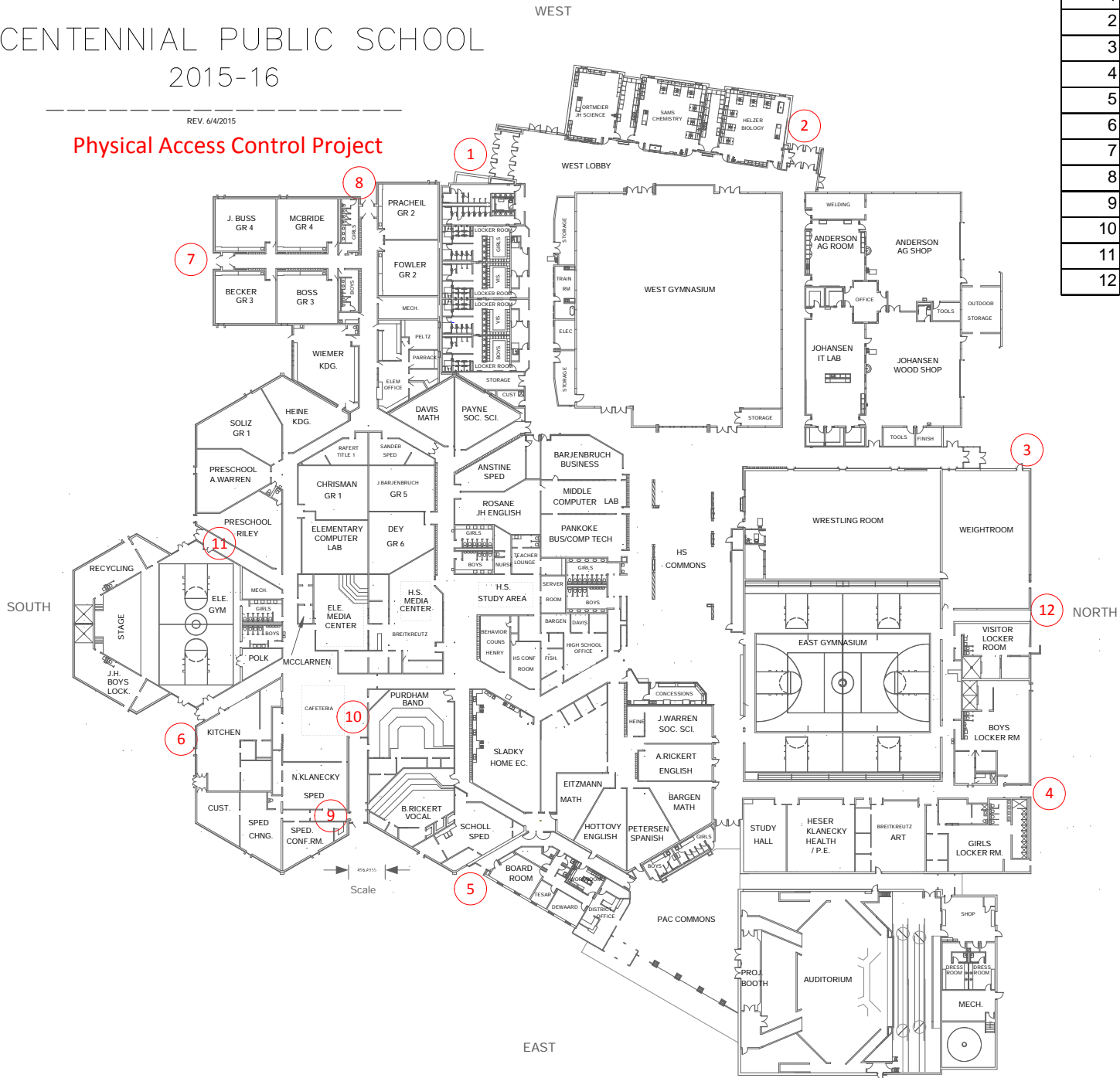
NOTWITHSTANDING ANY INCONSISTENT OR ADDITIONAL TERMS THAT MAY BE EMOIDIED IN YOUR PURCHASE ORDER, SELLER WILL ACCEPT YOUR ORDER SUBJECT ONLY TO THE TERMS OF THE WRITTEN CONTRACT BETWEEN US UNDER WHICH YOUR ORDER IS PLACED. IF NO SUCH CONTRACT EXISTS SELLER WILL ACCEPT YOUR ORDER ONLY ON THE EXPRESS CONDITION THAT YOU ASSENT TO THE TERMS AND CONDITIONS CONTAINED ABOVE AND ON THE REVERSE SIDE HEREOF; AND YOUR ACCEPTANCE AND RECIPT OF THE GOODS SHIPPED HEREUNDER SHALL CONSTITUTE ASSENT TO SUCH TERMS AND CONDITIONS.

# CENTENNIAL PUBLIC SCHOOL

2015-16

REV. 6/4/2015

## Physical Access Control Project



Door #	Location	Card Access	ADA	Ajar Alarm
1	New SW entrance	New	Y	N
2	New NW entrance	New	N	N
3	Weighroom west	New	N	N
4	Locker room north	New	N	Y
5	Board room entrance	New	N	N
6	Lunch south	New	Y	Y
7	92 elem south	New	Y	N
8	92 elem west	New	Y	N
9	SPED area	Retrofit	N	N
10	Cafeteria east	Retrofit	Y	N
11	Playground south	Retrofit	Y	N
12	North track door	-	-	Y

# CENTENNIAL JR.-SR. HIGH

## Parent/Teacher Conferences

### PERCENTAGE OF ATTENDANCE

October, 1973	73%	March, 1995	78%
February, 1974	59%	September, 1995	83%
November, 1974	69%	March, 1996	75%
February, 1975	63%	September, 1996	
October, 1975	75%	March, 1997	
March, 1976	58%	October, 1997	83%
November, 1976	71%	March, 1998	74%
March, 1977	64%	October, 1998	81%
November, 1977	69%	March 1999	NA
March, 1978	64%	September, 1999	78%
November, 1978	77%	February, 2000	75%
March, 1979	69%	September, 2000	79%
November, 1979	68%	February 2001	74%
March, 1980	64%	September, 2001	80%
October, 1980	73%	February 2002	71%
March, 1981	69%	September, 2002	79%
November, 1981	75%	February 2003	72%
March, 1982	69%	September 2003	77%
November, 1982	75%	February 2004	73%
March, 1983	69%	September 2004	79%
November, 1983	76%	February 2005	73%
April, 1984	69%	September 2005	76%
October, 1984	72%	February 2006	77%
March, 1985	68%	September 2006	78%
November, 1985	75%	February 2007	76%
March, 1986	63%	September 2007	71%
October, 1986	72%	February 2008	62%
March, 1987	66%	September 2008	72%
November, 1987	74%	January 2009	63%
March, 1988	68%	September 2009	76%
November, 1988	76%	February 2010	69%
March, 1989	69%	September 2010	76%
November, 1989	75%	February 2011	63%
March, 1990	65%	September 2011	81%
November, 1990	78%	February 2012	76%
March, 1991	74%	September 2012	80%
November, 1991	78%	February 2013	73%
March, 1992	74%	September 2013	79%
November, 1992	77%	February 2014	69%
March, 1993	74%	September/October 2014	75%
November, 1993	78%	February 2015	68%
March, 1994	75%	September 2015	77%
September, 1994	79%		

**PARENTS/TEACHERS CONFERENCES**  
**Fall 2015**

<u>Grade</u>	<u>Total Students</u>	<u>Wednesday 9/23/2015%</u>	<u>Wednesday 9/30/2015%</u>	<u>Total %</u>
7	29	51%	37%	89%
8	27	18%	55%	74%
9	45	51%	35%	86%
10	28	42%	35%	78%
11	40	35%	40%	75%
12	32	21%	37%	59%

**TOTAL PERCENTAGE FOR WEDNESDAY 9/23/2015**

37%

**TOTAL PERCENTAGE FOR WEDNESDAY 9/30/2015**

39%

**TOTAL PERCENTAGE FOR ALL**

77%

**Secondary Principal's Report  
October 12, 2015**

1. **Parent /Teacher Conference Attendance –**
  - a. 77% Overall (see attachment for historical comparison)
  
2. **Fall Sports Update...**
  - a. **Cross Country** – Districts Thurs. at Brickyard Park in Hastings hosted by St. Cecilia
  - b. **Football** – 4-3. Fri. vs. Shelby-Rising City
  - c. **Volleyball** – 5-13. Tues vs. Fillmore Central, Thurs - Tri @ Aquinas/DC
  - d. **Softball** – Districts @ Geneva last Thurs & Fri, ended season at 5-24
  
3. **1<sup>st</sup> Quarter Ends Thursday...**
  - a. It's been a good quarter...like last year, very low numbers of ineligible students.
  - b. Kids & staff have been working hard all quarter...
  - c. In-service day on 10/19...kids will be ready for a 4-day weekend...
  
4. **Karen Haase here on 11/10 to talk digital citizenship...**

## SUPERINTENDENT'S REPORT

October 12, 2015

1. It's time to start planning for the NASB State Conference in Omaha. The pre-conference sessions this year on Wednesday, November 18<sup>th</sup>, from 1:00 p.m. to 4:00 p.m. on "2015 Green Schools Summit" and "Cradles to Careers". The conference will be held on Thursday and Friday, November 19<sup>th</sup> and 20<sup>th</sup>. We have room reservations at the Courtyard Marriott LaVista this year for Larry, Doug, Jason, Colin, and myself for Wednesday and Thursday nights. (Wayne has reservations through NASB)
2. Once again, the past month has been state report month. We have worked on the CDC, NSSRS, LEP and Poverty Plans, and the Consolidated Application and hope that we are getting close to having all of them completed.
3. We are planning on updating the weight room over Christmas Break.
4. We have not had a Past Board Member's Meeting for several years. We may want to discuss when we want to have another one.
5. E-Funds – We discussed this a few months ago. This would be a way for parents to pay for lunches and possibly other things online. Milford offers this and they have the parents pay all fees associated with it. Marge has had three parents in the past week or so inquiring about something like this.
6. Flu shots will be given on Monday, October 26<sup>th</sup> from 7:15 a.m. to 9:00 a.m. Stop by if you would like to be on the receiving end of the needle.
7. AASA National Conference – I am considering whether to attend the National AASA Conference in Phoenix in February. Does anyone have an issue if I do attend?



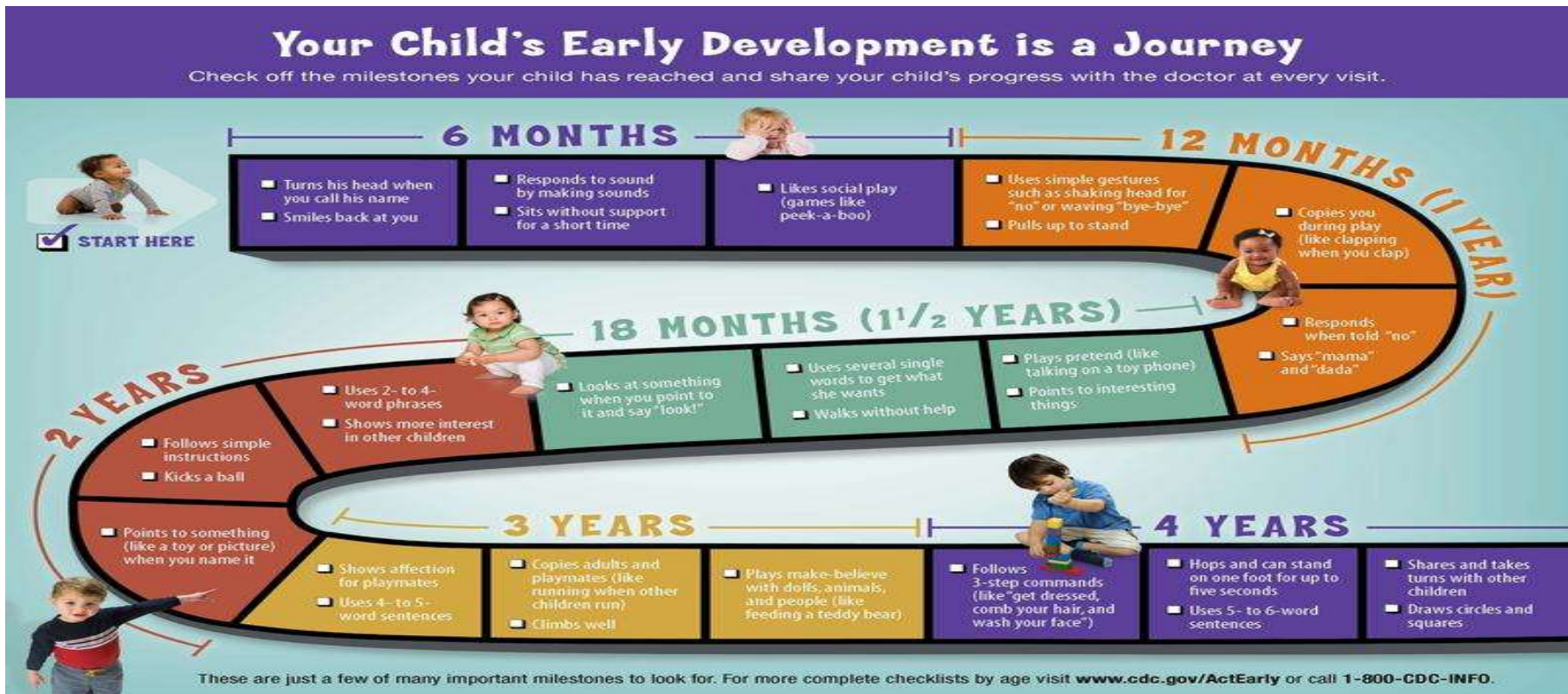
**Board of Education Meeting**  
Special Education Summary  
October 12, 2015

- I. Birth to 3 / Sixpence and Childfind
  - A. Pat Sudrla – Information distribution
  - B. Sixpence flyer (Grant with Centennial, Milford, and Seward)
  
- II. Behavior Conference at Overland Park, KS
  - A. Alex Anstine, Shannon Henry, and John McClarnen
  - B. Strategies to discuss with staff
  - C. Matt McNiff – ESU #5 / Planning with Marni
  
- III. October 29 – Paraeducator Conference
  
- IV. November 5 and 6 – Special Education Law Conference

# Birth to Age 3 Developmental Screening

Centennial Public School will offer a free developmental screening for children Birth to age 3. The screening is an opportunity for parents to receive information regarding their child's development.

- Date:** October 30, 2015
- Location:** Centennial Public School / 1301 Centennial Avenue / Utica, NE
- Cost:** Free
- Developmental Areas:** Fine Motor / Gross Motor / Problem Solving / Social-Emotional / Speech-Language
- Who Should Participate:** Any parent and child (Birth to age 3) who resides in the Centennial Public School district
- Registration / More Details** Contact John McClarnen, Special Education Director, at (402) 534-2321 (Extension: 4)





## Elementary Principal's Report

Marni Parrack

October 12, 2015

1. Elementary Activities from 9/14 - 10/12:
  - a. Farm Safety Day
  - b. Mr. Polk sponsored Punt, Pass, and Kick
  - c. Grades 1-6 attended Plum Creek Literacy Festival @ Concordia
  - d. Mr. Polk had Kirby's attend and teach a lesson in PE class
  - e. Staff have attended workshops at ESU 6 to further professional development
  - f. Late Start to further professional development
  - g. Parent-Teacher Conferences - 87% attendance - working to make contact with parents and schedule follow ups - aiming for 100% attendance
  
2. Bathroom usage changes
  
3. Halloween - Can we return to having Halloween parties and a costume parade?
  
4. Enrollment as of 10/12/2015
  - Preschool 3s: 17
  - Preschool 4s: 25
  - Kindergarten: 29
  - 1st Grade: 22
  - 2nd Grade: 32
  - 3rd Grade: 29
  - 4th Grade: 28
  - 5th Grade: 30
  - 6th Grade: 27

Total Enrollment: PreK-6 - 239

Total Enrollment: K-6 - 197