



Saline County Board of Commissioners

Meeting Agenda

AGENDA

SALINE COUNTY BOARD OF COMMISSIONERS

SALINE COUNTY COURTHOUSE

Wilber, NE

9:30 AM

DATE: March 15, 2022

This agenda is kept on a daily basis and may change from day to day as requests come in to the County Clerk's office. Requests to be on the agenda must be in the County Clerk's office 24 hours prior to the start of the meeting as stated above. This agenda is considered current on the day of the meeting and cannot be changed or altered except for an emergency.

The Board reserves the right to go into executive session if such session is clearly necessary for the protection of the public interest or for the prevention of needless injury to the reputation of an individual.

ROLL CALL

APPROVAL OF AGENDA

APPROVAL OF MINUTES OF THE PREVIOUS MEETING

CITIZENS FORUM

CORRESPONDENCE

REPORT OF OFFICIALS

BUSINESS FOR ACTION

9:45 - Lori Moldenhauer, Aging Services: Approve the appointment of _____ to the Saline County Aging Services Board

10:00 - Discuss/Approve quote from Planet Technologies, \$5,491.20 annually for County employee email

10:15 - John McKee, Emergency Management - Discuss approve the South Central East Community Wildfire Protection Plan

John McKee - Discuss/Approve the Homestead LEPC Local Emergency Planning Committee Hazardous Materials Emergency Response Plan

Approve the February 2022 Clerk Fees - \$14,059.75

Approve the February 2022 Clerk of the District Court fees - \$31,387.32

Approve the February 2022 Sheriff Fees - \$2,152.57

Approve Resolution #2022-09, Pledged Security of Citizens State Bank Cusip #077460AH6

Approve/disapprove Administrative Sub-division section 2-8-1E:Leann Turner

11:15 - Alan Strouf - Veteran Service Committee

RESOLUTIONS TO TRANSFER FUNDS

Approve/Disapprove Resolution #2022-08, transferring \$1,100.00 from the Inheritance Fund to the Juvenile Services Aid Fund, to be reimbursed when funds become available

HIGHWAY SUPERINTENDENT - ROAD AND BRIDGE MATTERS

11:00 a.m. Public Hearing regarding One and Six Year Plan.

Discuss and approve/disapprove One & Six Year plan. On display at County Clerk's Office.

Discuss and Approve/Disapprove Resolution #2022-07 to set public hearing date to vacate and abandon County Road 1500 North of County Road B for approximately 1/2 mile.

11:30 COUNTY GENERAL ASSISTANCE AND CLOSED SESSION MATTERS

Discuss Personnel Issue

CLAIMS APPROVAL

ADJOURNMENT

SALINE COUNTY BOARD OF COMMISSIONERS

The regular meeting of the Saline County Board of Commissioners was called to order at 9:44 a.m. on Tuesday, March 1, 2022, by Chairperson Russ Karpisek. Present were Karpisek, Janet J. Henning, Marvin A. Kohout, Stephanie A. Krivohlavek Commissioners, and County Clerk Anita K. Bartels. County Attorney Tad Eickman was present between court commitments. Commissioner Phil Hardenburger was absent.

Notice of said meeting was posted in the County Clerk's Office, on the Saline County Website, and published in all three county newspapers on February 23, 2022, in compliance with State Statutes.

Let the record show that all proceedings are electronically recorded.

Karpisek advised those present of the open meetings act posted at the back of the room.

Henning moved to approve the agenda, seconded by Kohout. Voting aye were Henning, Karpisek, Kohout and Krivohlavek, nays none, motion carried.

Krivohlavek moved to approve the minutes of the February 15, 2022 meeting, seconded by Kohout. Voting aye were Karpisek, Kohout, Krivohlavek, and Henning, nays none, motion carried.

Under correspondence, Bartels reported receiving from the City of Crete, the March 1st agendas for the City Council, Public Works Committee, Finance Committee and Parks and Recreation Committee; from SENDD the amended agenda and financials ending January 31, 2022; a notice from the Nebraska Dept. of Natural Resources that there will be an inspection of the Shestak Dam in the SE ¼ of Section 12, Township 7 North, Range 3 East; a notice from NIRMA announcing the Cyber Security Toolkit Seminars and the 2021 NIRMA Annual Report.

At 9:45 a.m., Henning moved to open the Public Hearing for a Conditional Use Permit to install highspeed internet poles located at Section 31-5-1 and Section 29-5-3, seconded by Kohout. Voting aye were Kohout, Krivohlavek, Henning and Karpisek, nays none, motion carried.

Planning & Zoning Administrator Lyle Weber, explained the Nextlink Internet Company was applying for this permit to install poles in these two sections southwest of Swanton. Nextlink Internet Company would be the only entity using these poles. These poles are line of site and will not required lights due to their distance from an airport.

Henning moved to close the Public Hearing, seconded by Krivohlavek. Voting aye were Krivohlavek, Henning, Karpisek and Kohout, nays none, motion carried.

Henning moved to approve the Nextlink Internet Company Conditional Use Permit for high speed internet poles, seconded by Kohout. Voting aye were Henning, Kohout and Krivohlavek, nay Karpisek, motion carried.

Michaela Nielson, Soarin Group Human Resources gave an update on the Human Resources she has been involved with. Nielson will be scheduling a meeting with the officials to finalize the Employee Handbook and setting up demos for payroll/timekeeping software.

Tom Nielson, Soarin Group IT, reported is has become necessary for the Law Enforcement Department to change email software which will require Outlook 365. Nielson explained how Outlook 365 and having all County employee emails under our available .gov domain would have greater cybersecurity and restrictions. Nielson was given approval to pursue this transition to Outlook 365 and uniform .gov email addresses.

Under Reports of Officials, Kohout reported attending meetings with Planning & Zoning and the Employee Recognition Committee; participating in the Employee Health Fair; noting information from NIRMA on Cybersecurity and announced the SE District meeting will be March 10th in Lincoln.

Henning reported she has a CASA meeting on March 28th.

At 10:02 a.m. Karpisek announced the Board would recess;

At 10:13 a.m. Karpisek announced the Board would reconvene;

Pam Hromadka and Mary Ann Losh with the Friend Historical Society gave a presentation of the milestones accomplished on renovating the Warren Building, including the Historic Warren Opera House. Hromadka and Losh explained there is still much to be done to accomplish a complete restoration and inquired if ARPA monies would be available to the Friend Historical Society as a 501(c)(3) nonprofit. The Board responded by stating decisions have not yet been made on how to spend the ARPA funds Saline County received, but a list will be compiled of all requests made to the County for ARPA funds. Once the County has received definite guidelines on how the funds can be used, requests made to the County can then be addressed.

Megan Burda with the UNL Extension Office introduced the new Saline County Extension Office employees Melanie Kunc, Office Manager and Ingrid Lindal, Early Childhood Educator. Burda also presented the Nebraska Extension in Saline County Annual Report.

At 11:00 a.m. Marci Fehlhafer, Southeast Nebraska CASA, gave an update of CASA reserves to the Board, noting April is recognized as Child Abuse Prevention Month. She requested permission, during the month of April, to place pinwheels on the Courthouse lawn and a table in the Courthouse lobby with literature which would bring awareness of the CASA program and the need of volunteers. The Board granted her request.

Discussion was held on terminating the road haul agreement with the TC Keystone Pipeline. There is a concern whether there would be a negative impact on the roads if Keystone hauls out the pipe. Eickman advised not to take action at this time. Highway Superintendent Bruce Filipi is to follow up with Keystone to get more information. No action was taken.

The 2022 South Central East Community Wildfire Protection plan was tabled until the next meeting when Emergency Manager John McKee would be available.

Highway Superintendent Filipi's recommendation to the Board was to vacate the ¼ mile stretch of road between County Road 1500 north of County Road B. The Board accepted his recommendation, and requested the required Public Hearing be set for April 12, 2022 at 11:00.

At 11:20 a.m. Henning moved to enter closed session to discuss a General Assistance Request, seconded by Krivohlavek. Voting aye were Kohout, Krivohlavek, Henning and Karpisek, nays none, motion carried.

At 11:40 a.m. Kohout moved to exit closed session, seconded by Krivohlavek. Voting aye were Krivohlavek, Henning, Karpisek and Kohout, nays none, motion carried.

Karpisek announced during closed session a General Assistance Request was discussed with no action taken.

Krivohlavek moved to approve the General Assistance Request, #GA2022-01 in the amount of \$677.45, seconded by Henning. Voting aye were Henning, Karpisek, Kohout and Krivohlavek, nays none, motion carried.

Krivohlavek moved to approve the claims as presented with the addition of #GA2022-01 in the amount of \$677.45, seconded by Kohout. Voting aye were Karpisek, Kohout, Krivohlavek and Henning, nays none, motion carried.

GENERAL FUND

General Fund Payroll	Salaries	125,981.49
Aging Partners	Contract	32,389.00
Anytime Plumbing	Building Maint	967.75
Aumentum Technologies	Office Supplies	1,844.96
Black Hills	Utility	96.00
Bryan Physician Network	Health	35.46
Daryl Clark	Reimburse	54.54
CAMC	Health	29.71
CVSOAN	Training	60.00
Dollar General	Supplies	54.75
Eakes	Office Supplies	324.32
Ecolab	Supplies	408.14
Ecolab Pest Elimination	Building Maint	183.57
Farmers Coop	Fuel	1,056.00
Fehlhafer's	Equipment Rpr	210.00
First Concord	Insurance	511.00
First Wireless	Equipment Rpr	3,167.98
Friend Community Healthcare System	Health	1,095.00
Goodwin Tucker	Equipment Rpr	469.20
Greatamerica Financial	Contract	385.20
Scott Gropp	Attorney Fees	6,666.67
Janet Henning	Reimburse	70.00
The Home Depot Pro	Supplies	94.08
Kalkwarf & Smith	Attorney Fees	997.50
Keystone	Equipment Rpr	201.75

Kiner Supply	Supplies	419.34
Marvin Kohout	Mileage	365.68
La Quinta Inn	Training	129.00
Lincoln Radiology	Health	29.97
Mallory Safety And Supply	Uniform	184.49
Midwest Court Reporting	Board Fees	191.80
MIPS	Office Equip	93.75
Cody Mulbery	Reimburse	29.21
NACO	Training	280.00
Nebraska Assn Cty Eng Hwy Supr Surv	Training	110.00
Nebraska Assn of County Treasurers	Training	50.00
Nebraska Public Health Envr Lab	Contract	630.00
Nebraska Weed Control Association	Training	165.00
Tyson Osborn	Reimburse	10.00
Physicians Laboratory	Contract	3,307.00
PIP	Office Supplies	880.06
Quadient	Equipment	998.04
Region V Systems	Contract	428.00
Ricky's Café	Banquet	1,001.00
Saline County Attorney	Reimburse	64.93
Seward County Independent	Print & Publish	46.27
Shop Qwik	Fuel	12.87
Sid Dillon	Equipment Rpr	104.95
Siemens Industry	Building Maint	1,214.37
Soarin Group	Contract	4,338.25
Sokol Hall	Banquet	200.00
State of NE	Contract	147.60
Anita Stougard	Mileage	83.08
Summit	Supplies	9,161.62
Talx Corporation	Contract	374.90
Tech Masters	Building Maint	1,000.84
Tyler Technologies	Office Equip	449.00
U.S.P.S	Postage	6,000.00
Us Bank Equipment Finance	Contract	282.65
Verizon	Communications	1,764.49
Village of Dewitt	GA	677.45
Visa	Office Equip	921.38
Visa	Office Equip	384.94
Visa	Elec Supplies	1,503.83
Visa	Contract	52.00
Visa	Postage	16.72
Visa	Fuel	66.82
Visa	Banquet	57.89
Visa	Postage	319.20
Visa	Equipment	995.10
Walker	Supplies	33.08
Walker	Supplies	71.21
Windstream	Communications	7,146.73
Witness Fees	Witness Fee	31.20
3 & 33 Mutual Aid	Dues	25.00
911 Custom	Uniform	131.90
ROAD FUND		
Road Fund Payroll	Salaries	30,759.71
B's Enterprises	Supplies	6,432.00
Black Hills	Utility	248.26
CAMC	Health	30.00
Farm & Home Publishers	Supplies	65.25

Food Mesto	Supplies	18.83
Medical Enterprises	Health	35.00
Metrocount	Supplies	204.00
Orschelns	Supplies	269.34
RDO Truck Center	Supplies	84.89
Roit Repair	Equipment Rpr	85.25
Sapp Bros	Fuel	2,082.37
Speece-Lewis	Engineer Fees	686.00
Village of Dewitt	Utility	75.46
Visa	Tax Payment	3,243.81
BAILIFF FUND		
Bailiff Fund Payroll	Salaries	1,246.73
Eakes Office Plus	Office Supplies	30.15
Kathy Homolka	Mileage	196.56
VISITOR'S IMPROVEMENT FUND		
Sons Of The American Legion	Reimburse	1,000.00
Tabor Hall	Reimburse	2,000.00
WELLNESS FUND		
Madonna Rehab Hosp-Fit For Work	Contract	50.00
Visa	Supplies	442.46
AGING SERVICES FUND		
Samantha Cosaert	Program	228.00
Marcia Emal	Program	183.75
Darlene Pribyl	Program	146.25
Visa	Program	199.53
Visa	Program	11.88
Visa	Program	238.80
DRUG COURT FUND		
Kalkwarf & Smith Law Offices Llc	Attorney Fees	1,200.00
JUVENILE SERVICES GRANT FUND		
Anita Stougard	Program	1,030.20
COVID AMERICAN RESUCE PLAN FUND		
Inclusion Solutions Llc	Elec Supplies	1,823.97
Lutz & Company Pc	Contract	345.00
INHERITANCE TAX FUND		
Evelyn M Spilker Living Trust	Refund	2,422.20
911 EMERGENCT MANAGEMENT FUND		
Windstream	Communications	156.27
911 WIRELESS SERVICE FUND		
Windstream	Communications	1,199.20
COMMISSARY FUND		
Summit Food Service Llc	Supplies	5,144.53
HIGHWAY BOND FUND		
Union Bank & Trust Company	Bond Payment	15,431.25
ALL FUNDS		
First State Bank	Fed Tax	17,729.81
NE Dept of Rev	State Tax	8,049.96
First State Bank	Soc Sec	32,881.32
Ameritas Life	Retire	26,136.00
BC/BS	Hlth Ins	106,125.90
Delta Dental	Dental Ins	2,241.59
Madison Nat'l Life	Life Ins	49.62
AFLAC	Ins	1,150.39
VSP	Eye Ins	508.18
MassMutal	Def Comp	2,428.00
First Concord	Café	2,023.65
Colonial Supp Ins	Ins	164.87

Madison Nat'l Life	Dis Ins	167.49
Teamsters	Dues	312.00
New York Life	Ins	95.64
Globe Life	Ins	248.84
AZ Child Support	Garnish	86.06
Professional Choice Recovery	Garnish	189.04
Lancaster County Court	Garnish	200.83
Nebraska Child Support	Garnish	300.00

There being no further business to come before the Board, the meeting was adjourned at 11:51 a.m. The next regular meeting will be on March 15, 2022 at 9:30 a.m. in the Saline County Commissioners' Room, Court House, Wilber, NE.

ATTEST:

Anita K. Bartels, County Clerk

Janet J. Henning

Marvin A. Kohout

Stephanie A. Krivohlavek

Phil Hardenburger, Vice-Chairperson

Russ Karpisek, Chairperson

I, Anita K. Bartels, County Clerk in and for Saline County, do hereby certify that the minutes of the previous meeting held on February 15, 2022 were approved as presented.

Anita K. Bartels, County Clerk

Janet J. Henning

Marvin A. Kohout

Stephanie A. Krivohlavek

Phil Hardenburger, Vice-Chairperson

Russ Karpisek, Chairperson



Quote prepared: 3/1/2022

Quote expires: 3/31/2022

Planet Technologies offers the following quote for Saline County through our AOS-G Agreement. This quote will expire March 31st, 2022; upon expiration of this quote, the following prices may no longer be valid.

Option 1:

Part Number	SKU	Monthly Cost Per User	Annual Cost Per license	Quantity/Users	Annual Cost for licenses
3MS-00001	ExchgOnlnP1GCC	\$3.52	\$42.24	130	\$5,491.20

Amount for Quote 1: \$5,491.20

Saline County must include the attached Microsoft Terms and Conditions as part of the contract. The agreement cannot be executed (processed at Microsoft) until the completed documents and PO are received for the initial payment. At the point the documents are approved by the Legal Department at Microsoft, the billing period will begin. Prior to the enrollment anniversary, the Annual Order process allows your organization to submit an annual order to account for any increase or decrease in licenses (for example those required for qualified devices or users, license transitions and Online Services reservations, as permitted). Additional details:

- Your annual order must be received by Planet Technologies, Inc. between 60 and 30 days prior to the Enrollment Anniversary.
- If the annual order is not received when due, Planet Technologies, Inc., will invoice for all subscription Licenses including Online Services and L&SA, ordered in the prior year and any Online Service reservations more than the quantity previously ordered.

Unless specified otherwise in the above referenced contract, all prices are based on Net 30 terms. If not shown, shipping, handling, taxes, and other fees will be added at the time of the order where applicable. Saline County understands and acknowledges that all warranties, representations, and returns are subject to the manufacturer, publisher, or distributor guidelines.

All product descriptions and prices are based on the latest information available and are subject to change within the terms of the above referenced contract.

By signing this contract, you agree to be bound by the applicable pricing and all Terms and Conditions found herein, including but not limited to the attached Microsoft Terms and Conditions.

Saline County

Planet Technologies, Inc.
20400 Observation Drive, Suite 107
Germantown, MD 20876
(301) 721-0100

Signature	Date	Signature	Date
Print Name		Print Name	
Company Name		Company Name	
Street Address		Street Address	
City, State, Zip Code		City, State, Zip Code	



To: County Boards
From: Nebraska Forest Service
RE: Signature Page for South Central East Community Wildfire Protection Plan

February 21, 2022

Thank you for your collaboration on the 2022 South Central East Community Wildfire Protection Plan (CWPP) for Adams, Clay, Fillmore, Jefferson, Nuckolls, Saline, Thayer, and Webster Counties. During the review period we received updated graphics for Jefferson and Webster County Fire Resources and Services, as well as several more fire department surveys. These have been added to the final document. We also corrected a few typographical errors and made some minor formatting changes to improve legibility.

Enclosed is the CWPP signature page. **Please fill out and sign the section for your county and return to us** via scan (preferred) to: sbenson4@unl.edu or by regular mail to: Nebraska Forest Service, Attn: Sandy Benson, PO Box 830815, Lincoln, NE 68583-0815. Once we have received the signatures from the counties we will combine them into a single signature page and incorporate them into the final document.

Hard copies of the final plan will be mailed to county boards and emergency managers in the region and will be made available to others upon request. The document is also available online at <https://nfs.unl.edu/documents/CWPP/SCECWPP.pdf>. This links to the document prior to signatures being received. We will add the completed signature page before printing and sending to you.



Nebraska Forest Service
102 Forestry Hall | PO Box 830815 | Lincoln, NE 68583-0815
(402) 472-2944 | trees@unl.edu

South Central East Community Wildfire Protection Plan

Approved By:

Adams County Board of Commissioners

Signature: _____ Title: _____

Name _____ Date: _____

Clay County Board of Supervisors

Signature: _____ Title: _____

Name _____ Date: _____

Fillmore County Board of Supervisors

Signature: _____ Title: _____

Name _____ Date: _____

Jefferson County Board of Commissioners

Signature: _____ Title: _____

Name _____ Date: _____

Nuckolls County Board of Commissioners

Signature: _____ Title: _____

Name _____ Date: _____

Saline County Board of Supervisors

Signature: _____ Title: _____

Name _____ Date: _____

Thayer County Board of Commissioners

Signature: _____ Title: _____

Name _____ Date: _____



South Central East Community Wildfire Protection Plan

Webster County Board of Commissioners

Signature: _____ Title: _____

Name _____ Date: _____

Nebraska Forest Service

Signature: _____ Title: _____

Name _____ Date: _____

NEBRASKA
EMERGENCY MANAGEMENT AGENCY

Good Life. Great Strength.

**STATE EMERGENCY
RESPONSE COMMISSION**



Pete Ricketts, Governor

**Homestead LEPC
Local Emergency Planning Committee
Hazardous Materials Emergency Response Plan**

March 2022



**HOMESTEAD LEPC
HAZARDOUS MATERIALS
EMERGENCY RESPONSE PLAN**

Homestead LEPC

HAZARDOUS MATERIALS EMERGENCY RESPONSE PLAN

APPROVAL & IMPLEMENTATION

The Homestead LEPC developed the Hazardous Materials Emergency Response Plan (ERP) to identify actions required to minimize damage to human health, natural systems and property caused by the actual or potential spill or release of hazardous materials, including a radioactive material incident. The Plan details the purpose, policy, concept of operations, direction/control, actions and responsibilities of primary and support agencies in accordance with 42 U.S. Code §11001 and Nebraska Revised Statutes 81-15,191-235.

Homestead LEPC Chairperson

Date

Chairman, Gage County Board of Supervisors

Date

SERC Chairperson

Date

Homestead LEPC

HAZARDOUS MATERIALS EMERGENCY RESPONSE PLAN

APPROVAL & IMPLEMENTATION

The Homestead LEPC developed the Hazardous Materials Emergency Response Plan (ERP) to identify actions required to minimize damage to human health, natural systems and property caused by the actual or potential spill or release of hazardous materials, including a radioactive material incident. The Plan details the purpose, policy, concept of operations, direction/control, actions and responsibilities of primary and support agencies in accordance with 42 U.S. Code §11001 and Nebraska Revised Statutes 81-15,191-235.

Homestead LEPC Chairperson

Date

Chairman, Fillmore County Commissioners

Date

SERC Chairperson

Date

Homestead LEPC

HAZARDOUS MATERIALS EMERGENCY RESPONSE PLAN

APPROVAL & IMPLEMENTATION

The Homestead LEPC developed the Hazardous Materials Emergency Response Plan (ERP) to identify actions required to minimize damage to human health, natural systems and property caused by the actual or potential spill or release of hazardous materials, including a radioactive material incident. The Plan details the purpose, policy, concept of operations, direction/control, actions and responsibilities of primary and support agencies in accordance with 42 U.S. Code §11001 and Nebraska Revised Statutes 81-15,191-235.

Homestead LEPC Chairperson

Date

Chairman, Jefferson County Commissioners

Date

SERC Chairperson

Date

Homestead LEPC

HAZARDOUS MATERIALS EMERGENCY RESPONSE PLAN

APPROVAL & IMPLEMENTATION

The Homestead LEPC developed the Hazardous Materials Emergency Response Plan (ERP) to identify actions required to minimize damage to human health, natural systems and property caused by the actual or potential spill or release of hazardous materials, including a radioactive material incident. The Plan details the purpose, policy, concept of operations, direction/control, actions and responsibilities of primary and support agencies in accordance with 42 U.S. Code §11001 and Nebraska Revised Statutes 81-15,191-235.

Homestead LEPC Chairperson

Date

Chairman, Thayer County Commissioners

Date

SERC Chairperson

Date

Homestead LEPC

HAZARDOUS MATERIALS EMERGENCY RESPONSE PLAN

APPROVAL & IMPLEMENTATION

The Homestead LEPC developed the Hazardous Materials Emergency Response Plan (ERP) to identify actions required to minimize damage to human health, natural systems and property caused by the actual or potential spill or release of hazardous materials, including a radioactive material incident. The Plan details the purpose, policy, concept of operations, direction/control, actions and responsibilities of primary and support agencies in accordance with 42 U.S. Code §11001 and Nebraska Revised Statutes 81-15,191-235.



Homestead LEPC Chairperson

Date

Chairman, Saline County Commissioners

Date

SERC Chairperson

Date

INTRODUCTION

Purpose

The plan provides guidance for hazardous materials incident planning, notification and response as required by SARA Title III of 1986, also known as the Emergency Planning & Community Right-to-Know Act, which shall hereinafter be referred to as EPCRA. This plan is designed to prepare the Homestead Local Emergency Planning Committee (LEPC), which consists of the counties of Fillmore, Gage, Jefferson, Saline and Thayer and its political subdivisions for incident response and to minimize the exposure to or damage from materials that could adversely impact human health and safety or the environment.

Scope

The Homestead LEPC Hazmat Emergency Response Plan and the Fillmore, Gage, Jefferson, Saline and Thayer LEOP (Local Emergency Operation Plan) will be used and referenced for emergency response and procedures in each county jurisdiction.

Regulations and Policy Documents

The Homestead LEPC consists of a five (5) county area, including Fillmore, Gage, Jefferson, Saline and Thayer County. All jurisdictional areas within each county includes legal authorities, laws, rules and agreements directly related to hazardous materials planning and response.

- Local county statutes, ordinances and regulations within the jurisdictions
- Nebraska RRS 81-15,191-235 - Local organizations and joint local organizations authorized - Establishment, operation - Emergency powers, procedures
 - Title 67 Nebraska Administrative Code Chapter 7
- Federal statutes and regulations 40 CFR Part 355 - Emergency Planning and Notification
 - 40 CFR Part 370 - Hazardous Chemical Report: Community Right-to-Know
 - U.S. Code: Title 42, Chapter 116, Section 11003a-g - Comprehensive Emergency Response Plans
 - OSHA (CFR 1910.120) and EPA regulations and Employer responsibilities
- State of Nebraska Emergency Management Assistance Compact (EMAC)
- Memorandums of Agreement or Understanding with other governmental entities within each County of Fillmore, Gage, Jefferson, Saline and Thayer and the Homestead LEPC
- Title 126 Nebraska Administrative Code Chapter 18

SITUATIONS & ASSUMPTIONS

Situations

Substances, which if released in an uncontrolled manner (i.e. spill) can be harmful to people, animals, property, and/or the environment. A hazardous material is any substance or

combination of substances, which because of quantity, concentration, physical, chemical, or infectious characteristics may pose substantial immediate or potential hazards to humans or the environment.

The Homestead LEPC acknowledges that each of our counties are vulnerable to various hazardous materials which are commonly used, stored, transported, and manufactured including agriculture and industrial chemicals, explosive and combustible products. Products are transported on public roads, railroads, pipelines and by aircraft. While companies from neighboring jurisdictions are not subject to report their inventory to the Homestead LEPC we recognize the impact a release or spill may have.

The Homestead LEPC acknowledges regulated facilities subject to EPCRA and the requirements of Nebraska RRS 81-15,220 (1) which requires the identification of facilities containing an extremely hazardous substance in an amount which exceeds the threshold planning quantity established for such substance that are within the emergency planning district, identification of routes likely to be used for the transportation of extremely hazardous substances, and identification of additional facilities contributing or subjected to additional risk due to their proximity to facilities subject to the requirements of this section.

The Homestead LEPC acknowledges that there are vulnerable areas and populations. Hazardous waste may contribute to the risk of public health and safety including weather and time of day.

The Homestead LEPC acknowledges that the Fire Department responding to the Hazmat incident shall be the lead agency.

The Homestead LEPC acknowledges there are various levels of hazmat training and capabilities within each county's jurisdiction. The fire departments have response vehicles equipped with special resource equipment, i.e. self-contained breathing apparatus, bunker/turnout gear, binoculars, foam/agents, foam application equipment, sorbents, communications, radiological monitoring equipment, dry chemical extinguishers and crews trained to handle some but not all hazardous material incidents.

The Homestead LEPC acknowledges that facilities that use and store hazardous materials may have response teams and support equipment to respond to their incident.

The Homestead LEPC acknowledges that main arterials such as roads, rail lines, pipelines, waterways and airports have been identified and referenced in each county LEOP and other Emergency Operation Plans.

The Homestead LEPC, Emergency Management Agencies and Fire Departments within each county receive copies of the Tier II report filed by the business/agency identifying the storage of hazardous material on site. The Tier II reporting process allows policies, responsibilities and operational procedures to be mitigated within the Homestead LEPC, identifying gaps in preparedness and planning exercises for response.

The Threat Hazard Identification & Risk Assessment (THIRA) can be found on record within the Homestead LEPC, Southeast Emergency Management Planning, Exercise and Training (PET) Region and each county.

Assumptions

The fire department or law enforcement agency responding to an accident scene will usually be the first to discover the presence of hazardous materials either spilling or with the potential to spill. These personnel usually have had some training in handling this type of incident.

It is imperative that the hazardous material involved in the incident be identified as early as possible for the safety not only of the general population, but for first responders as well. Knowledge of the agent involved will determine the specific response required.

This plan considers any incident involving radioactive materials. The most likely scenario would be a transportation accident. It is unlikely that the shipping container would rupture due to impact however, the possibility exists that a rupture could allow a release of the hazardous materials. In the early stages of this type incident, local capabilities are usually limited because assistance from persons with special radiological knowledge and expertise may not be immediately available.

Limitations

The Homestead LEPC acknowledges there may be limitations in response such as the need of trained responders and extra law enforcement officers.

CONCEPT OF OPERATIONS

General

The Homestead LEPC will assist jurisdictions and agencies in preparing and reviewing facility hazardous materials response plans and procedures.

The authorized representative of the regulated facilities and transportation companies involved in an actual or suspected release of a hazardous material will promptly provide emergency notifications to all appropriate response agency(s), LEPC, SERC, tribal governments or other potentially affected LEPCs, SERCs, and tribal governments of the incident. They will also make recommendations to the responding agencies on how to contain the release and protect the public and environment.

Agencies responding to the release will do so only to the extent of their personnel's training and qualification, available resources and capabilities.

The Senior Fire Chief / Incident Commander will request the assistance of County Emergency Management Director, regional mutual aid partners and/or a State Emergency Response Team when the size and scope of the hazardous materials incident exceeds the response capabilities of the jurisdictional responders.

Direct advisory or technical support will be requested through the County/City Communications Center.

The first priority of the Senior Fire Officer/Incident Commander will be to determine the appropriate protective action, determine capabilities, disseminate recommendations and

implement them. When the emergency extends beyond the capabilities of the responders, the Senior Fire Officer / Incident Commander will request law enforcement, mutual aid; County Emergency Management Director to coordinate additional support; and through the local County Emergency Management Director request assistance from local, state or other agencies required at the scene which may include NDEE, DHHS, NEMA, SERC, NHIT, RRT, SDS, ERG, NE Fire Marshal, Hazmat technicians, Radiological officer, etc.

Law Enforcement Agencies will be responsible for providing security for the hazard area, traffic control, crowd control, directing and controlling any evacuations and providing hazmat training of their personnel.

The County Emergency Management Agency will be responsible for notification of support agencies, coordination with charitable and volunteer organizations that may be provided for assistance, coordination with state and federal agencies that may have a disaster response role, assist with public notification of evacuation areas or other health and protective measures, and obtain or coordinate appropriate training programs which will provide the skills and capabilities.

County Radiological officer will be responsible to maintain and develop program for training and review response plans when applicable.

Direction and Control

The Senior Fire Chief / Incident Commander will direct the activities of deployed emergency response elements through the Incident Command Post (ICP). The response will initially concentrate diffusing immediate threats to people, property and the environment.

The Public Information Officer (PIO) will coordinate the dissemination of information concerning the incident with the Senior Fire Chief / Incident Commander, Chief Executive Office and County Emergency Management Director. If the IC does not appoint a PIO, the Senior Fire Chief / Incident Commander assumes the responsibility of public information.

The County Emergency Operation Center will activate when requested to support the response.

The County LEOP will identify guidelines and procedures.

Release Identification

The Homestead LEPC acknowledges methods and procedures for determining a release and the affected areas will vary by location based on the area or population and personnel qualifications per Nebraska RRS 81-15,220(5).

The recognized methods and procedures to identify the release of hazardous materials vary by training and qualification. First responders will limit their actions to identify the occurrence of a release to those protocols specified for the hazardous materials response qualification level to which they are trained and currently qualified (Ref. OSHA 1910.120). Facility Emergency Operations Plan are available from the Agency/Business and/or on file with the County Emergency Manager.

Notification

The Homestead LEPC requires plans per section Nebraska RRS 81-15, 220 (4) to include procedures providing reliable, effective, and timely notification by the facility emergency coordinators to persons designated in the emergency plan, and to the public, that a release has occurred. Notification procedures shall be consistent with the notification requirements of section Nebraska RRS 81-15,222.

The owner or operator of the facility shall give notice immediately after the release by such means as telephone or radio or in person to the jurisdictional County/City Communications Center, Commission coordinator for information (NDEE) and to the County Emergency Manager for any area likely to be affected by the release. With respect to transportation of a substance subject to the requirements of this section or storage incident to such transportation, the notice shall be satisfied by dialing 911 or, in the absence of a 911 emergency telephone number, calling the operator. The facility emergency coordinator, authorized representative or responsible party will provide reliable, effective and timely notification of a release by call, fax or in person report on behalf of the facility.

When a hazardous materials incident is identified the County Emergency Manager will be notified by the Senior Fire Chief / Incident Commander and/or the jurisdictional County/City Communications Center.

Notice shall include each of the following to the extent known at the time of the notice and so long as no delay in responding to the emergency results:

- a) The chemical name or identity of any substance involved in the release;
- b) An indication of whether the substance is an extremely hazardous substance;
- c) An estimate of the quantity of any such substance that was released into the environment;
- d) The time and duration of the release;
- e) The medium or media into which the release occurred;
- f) Any known or anticipated acute or chronic health risks associated with the emergency and, if appropriate, advice regarding medical attention necessary for exposed individuals;
- g) Proper precautions to take as a result of the release, including evacuation, unless such information is readily available to the community emergency coordinator pursuant to the emergency plan; and
- h) The name and telephone number of the person or persons to be contacted for further information.

As soon as practicable after a release which requires notice and as more information becomes available, such owner or operator shall provide a written follow-up emergency notice or notices setting forth and updating the information specified above and including additional information with respect to:

- a) Actions taken to respond to and contain the release;
- b) Any known or anticipated acute or chronic health risks associated with the release; and
- c) If appropriate, advice regarding medical attention necessary for exposed individuals.

Response agencies and responders will be notified of a hazardous materials release using the following notification procedures using phone, text, fax or alert notification systems.

Please refer to the County LEOP for additional guidance.

In the event of a radiological incident, response personnel will notify the Nebraska State Patrol in Lincoln (402) 471- 4545. The first responder calling the State Patrol should gather as much of the information as possible from the Hazardous Materials Reporting Form (Appendix H) prior to placing the call.

The public will receive emergency warning and notification of a hazardous materials release through multiple channels of communication dependant on the location. Those will include, but not limited to phone alert systems, sirens, horns, door to door, EAS, radio and television.

Emergency Response and Responder Safety

The Homestead LEPC acknowledges that best practices will be used to serve the jurisdictional needs in order to protect the public health and safety and the environment.

The Homestead LEPC acknowledges that on scene personnel be protected from the adverse effects of hazardous materials contamination to safely perform their role in protecting the public and mitigating the incident. The Senior Fire Chief / Incident Commander may appoint a Safety Officer if needed. If a Safety Officer is not appointed the Senior Fire Chief / Incident Commander assumes the responsibilities.

A written incident action plan (IAP) will be in place for all hazardous materials incidents.

All responders to a hazardous materials incident shall:

- Adhere to applicable local, state and federal laws, statues, ordinances, rules, regulations, guidelines and established standards pertaining to responder safety.
- Response to a hazardous materials incident should conform to the standards set in National Fire Protection Association (NFPA) 472 - *Standard for Professional Competence of Responders to Hazardous Materials Incidents*.
- Participate in annual training and exercise.

Public Safety

The Homestead LEPC acknowledges that the Senior Fire Chief / Incident Commander is authorized to order the protective measures appropriate to the type of threat, current weather conditions, condition of population at risk, response capabilities and timeliness, available transportation resources, time of day and ability to communicate with the at-risk population. The procedures for implementing the evacuation and shelter-in-place procedures are defined in the County LEOP Annex E and Annex J.

The decision to evacuate or order shelter-in-place should be based upon known data or perceived risk when insufficient data is immediately available. Reference materials and resources which will aid the decision making process include:

- Emergency Response Guidebook (Current Edition), <http://www.phmsa.dot.gov/portal/site/PHMSA/menuitem.ebdc7a8a7e39f2e55cf2031050248a0c/?vgnextoid=ebfeca57e196d110VgnVCM1000009ed07898RCRD&vgnnextchannel=d248724dd7d6c010VgnVCM10000080e8a8c0RCRD&vgnnextfmt=print>
- Safety Data Sheets (SDS), <https://www.osha.gov/Publications/OSHA3514.html>

- Chemical Transportation Emergency Center (CHEMTREC), <http://www.chemtrec.com/>
- NIOSH Pocket Guide to Chemical Hazards, <http://www.cdc.gov/niosh/npg/>
- CAMEO Chemicals, <http://cameochemicals.noaa.gov/>
- Areal Locations of Hazardous Atmospheres (ALOHA), <http://www.epa.gov/oem/docs/cameo/ALOHAManual.pdf>
- Mapping Applications for Response, Planning, and Local Operational Tasks (MARPLOT), <http://www.epa.gov/oem/docs/cameo/MARPLOTManual.pdf>
- Emergency Assistance to a Hazardous Materials Incident (Blue Book) <https://nema.nebraska.gov/sites/nema.nebraska.gov/files/doc/Emergency%20Assistance%20to%20a%20Hazardous%20Materials%20Incident-fillable.pdf>

Resource Management

The Homestead LEPC acknowledges the County LEOP is used for identifying and managing resources. The statewide Salamander identification system is also used for identifying type equipment and trained first responders within each jurisdiction.

The Homestead LEPC acknowledges the Emergency Planning and Community Right to Know Act. Tier II reports are filed annually with the Nebraska DEE by the reporting agency/business. County Emergency Managers, jurisdictional fire departments and the Homestead LEPC also receive a copy of permit.

The Nebraska Department of Environmental and Energy makes available to the public on their website at <https://deq-iis.ne.gov/tier2> LEPC contacts, data files, LEPC contacts, Nebraska Local Emergency Planning Committees and the Community Right to Know Act.

The Homestead LEPC designed an informational brochure for the general public and reporting businesses / agencies. Please see attachment brochure.

Documentation and Investigation

The Homestead LEPC acknowledges that managing the consequences of an investigation for criminal acts will be facilitated by the local and state law enforcement, FBI, Homeland Security and NDEE.

Business / Agencies responsible for release shall adhere to Title 126, Chapter 18 of the Nebraska Administrative Code for Releases of Oil or Hazardous Substances.

The Homestead LEPC, County Emergency Manager and responding jurisdiction will prepare an After-Action Report (AAR) after each incident.

ORGANIZATIONS AND RESPONSIBILITIES

Homestead LEPC / County / Responding Agencies Please note each County LEOP.

FILLMORE COUNTY RESPONDING AGENCIES:**A. Fillmore County Fire Department EMS Departments:**

The primary responsibilities of fire service organizations are the prevention and suppression of fires, providing rescue services and responding to hazardous materials incidents.

Exeter Fire & Rescue	Joe Miller, Fire Chief	402-266-1422
	Alan Michl, Assist Fire Chief	402-366-2793
	Hope Strate, Rescue Capt.	402-376-2253
Fairmont Fire & Rescue	Jeff Neiman, Fire Chief	402-366-2518
	Stuart Bridges, Asst. Fire Chief	402-759-1819
	Anna Yates, Rescue Capt.	402-366-2418
Geneva Fire & Rescue	Mike Grothe, Fire Chief	402-768-8045
	Larry Loseke, Asst Chief	402-759-5554
	Nate Graham, Rescue Capt.	402-759-1373
Grafton Fire & Rescue	Jim Baumann, Fire Chief	402-759-2841
	John Griess, Asst Fire Chief	402-366-4291
	Carol Oliver, Rescue Capt.	402-366-4440
Milligan Fire & Rescue	John Kassik, Fire Chief	402-759-1495
	Dennis Kotas, Asst Fire Chief	402-629-4339
	Larry Michl, Rescue Capt.	402-629-4371
Ohiowa Fire & Rescue	Mitch Ozenbaugh, Fire Chief	402-759-1524
	Kevin Kimbrough, Asst Fire Chief	402-366-5700
	Kurt VandeWalle, Rescue Capt.	402-759-2781
Shickley Fire & Rescue	Ryan Hamburger, Fire Chief	402-984-9248
	Chris Swartzendruber, Asst Chief	402-759-3198
	Dylan Lauenstein, Capt.	402-759-1018

B. Fillmore County Emergency Management Department:

Jean Engle, Director	402-759-4932 (office)	402-759-1123 (cell)
Steve Roemmich, Deputy		402-759-1127 (cell)

Fillmore County Emergency Management Agency will assist the Chief Fire Officer / Incident Commander when deemed necessary; notify support agencies; coordinate charitable and volunteer organizations that may provide assistance; coordinate state and federal agencies that may have a disaster response role; assist with notification for the

public evacuation areas or health and protective measures; and assist with training programs to enhance the skills and capabilities required for response.

C. Fillmore County Law Enforcement Agencies:

Fillmore County Sheriff's Department	402-759-4441
Steve Julich, Sheriff	402-759-1089
Mark McFarland, Chief Deputy	402-947-1725
Brandon Howland, Sergeant	402-759-1209
Tyler Salmon, Fairmont/Exeter Marshall	402-759-1501

D. Public Health Solutions Health Department 995 E Hwy 33, Crete NE

Public Health Solutions assists as a support agency; advises on health and safety issues; and will assist with training and exercises.

Kim Showalter, Director	402-826-3880
Jen Hansen, Emergency Response Coordinator	402-826-6682
Kate Lange, Clinic Coordinator	402-826-3880

E. Homestead LEPC

The Homestead LEPC's responsibilities include the annual review and updating of the Hazmat Emergency Response Plan; receive reports and other information from covered facilities; coordinate community right-to-know activities including public access to information as noted in Section 324 of Sara Title and NEPCRA; assess resources necessary to implement the plan and make recommendations; encourage participation from representatives host informational meetings quarterly; and to educate the public on how they can seek information and learn how to safely shelter in place.

Chairperson: Chief Brian Daake, Beatrice Fire Dept	402-228-5246
Secretary: Lisa Wiegand	402-223-1305

County Emergency Management Agencies:

Fillmore: Jean Engle, Director - 900 G St, Geneva NE 68361	402-759-4932
Gage: Lisa Wiegand, Director -612 Grant St, Beatrice NE 68310	402-223-1305
Jefferson: John McKee, Director - 313 S K St., Fairbury NE 68352	402-729-3602
Saline: John McKee, Director 204 High St., Wilber NE 68465	402-821-3010
Thayer: Colt Farringer, Director -225 N 4 th St., Hebron NE 68370	402-768-2180

GAGE COUNTY RESPONDING AGENCIES:

A. Gage County Fire Department / EMS Departments:

The primary responsibilities of fire service organizations are the prevention and suppression of fires, providing rescue services and responding to hazardous materials incidents.

Adams Fire & Rescue	Scott Buhr, Fire Chief Laureen Ehmen, EMS Asst Chief	402-239-9880 402-450-4820
Barneston Fire	Taylor McHenry, Fire Chief Jayson Tennant, Asst Chief	402-914-0229 402-239-1159
Beatrice Fire & Rescue	Brian Daake, Chief	402-228-5247 or 402-228-8873
Beatrice Rural Fire	Matt Langley, Chief Dustin McQuigg, Asst Chief	402-806-2747 402-672-1802
Blue Springs Fire	Aaron McCrimmon, Chief Trenton Munstermann, Asst Chief	402-520-0796 402-239-7929
Clatonia Fire & Rescue	Jon Strunk, Chief Karel Polacek, Chief	402-239-2365 402-450-3623
Cortland Fire & Rescue	Jerry Vrbka, Chief Chris Briggs, Asst Chief Marilyn DeVries, Chief	402-560-3575 402-937-5591 402-499-4535
Filley Fire	AJ Weise, Chief Connor Mason, Asst Chief	402-239-2345 402-988-8399
Odell Fire	Brent Kostal, Chief	402-520-1229
Pickrell Fire	Alan Wallman, Chief	402-416-0467
Wymore Fire	Mark Meints, Chief Collin Meints, Asst Chief	402-806-7451 402-239-7538
Wymore Rescue	Shawna Schwartz, Chief	402-239-8497

All Fire/EMS Depts are members of the 3 / 33 Mutual Aid Association which responds to Gage, Jefferson and Saline County.

B. Gage County Emergency Management Department:

Lisa Wiegand, Director	402-223-1305 (office)	402-223-7031 (cell)
Joe Hawkins, Deputy		402-223-1305 (office)
Josh Niles, Deputy		402-440-3494

Gage Emergency Management Agency will assist the Chief Fire Officer / Incident Commander when deemed necessary; notify support agencies; coordinate charitable and volunteer organizations that may provide assistance; coordinate state and federal agencies that may have a disaster response role; assist with notification for the public evacuation areas or health and protective measures; and assist with training programs to enhance the skills and capabilities required for response.

C. Gage County Law Enforcement Agencies:

Gage County Sheriff's Department Sheriff Millard Gustafson Deputy Doug Klaus	402-223-4080
Beatrice Police Department Chief Bruce Lang Asst Chief Dan Moss	402-223-4080
Wymore Police Department	402-223-4080

D. Public Health Solutions Health Department 995 E Hwy 33, Crete NE

Public Health Solutions assists as a support agency; advises on health and safety issues; and will assist with training and exercises.

Kim Showalter, Director	402-826-3880
Jen Hansen, Emergency Response Coordinator	402-826-6682
Kate Lange, Clinic Coordinator	402-826-3880

E. South East Communications 911 Dispatch Center Beatrice NE

SE Communications serves as the 911 Dispatching Center for emergency calls for all of Gage County, including the City of Beatrice and City of Wymore. Emergency contacts for all public works, including Water Dept, Electric Dept, Business and Agencies are on available through their CAD system.

Carla Zarybnicky, Director	402-228-4080 or 402-228-5200
----------------------------	------------------------------

F. Homestead LEPC

The Homestead LEPC's responsibilities include the annual review and updating of the Hazmat Emergency Response Plan; receive reports and other information from covered facilities; coordinate community right-to-know activities including public access to information as noted in Section 324 of Sara Title and NEPCRA; assess resources necessary to implement the plan and make recommendations; encourage participation from representatives host informational meetings quarterly; and to educate the public on how they can seek information and learn how to safely shelter in place.

Chairperson:	Chief Brian Daake, Beatrice Fire Dept	402-228-5246
Secretary:	Lisa Wiegand	402-223-1305

County Emergency Management Agencies:

Fillmore:	Jean Engle, Director -900 G St, Geneva NE 68361	402-759-4932
Gage:	Lisa Wiegand, Director - 612 Grant St, Beatrice NE 68310	402-223-1305
Jefferson:	John McKee, Director -313 S K St. Fairbury NE 68352	402-729-3602
Saline:	John McKee, Director -204 High St. Wilber NE 68465	402-821-3010
Thayer:	Colt Farringer, Director -225 N 4 th St., Hebron, NE 68370	402-768-2180

JEFFERSON COUNTY RESPONDING AGENCIES:

F. Jefferson County Fire Department / EMS Departments:

The primary responsibilities of fire service organizations are the prevention and suppression of fires, providing rescue services and responding to hazardous materials incidents.

Daykin Fire & Rescue	Doug Brandt, Fire Chief Robert Brockmeyer, Rescue Capt.	402-239-2585 402-890-2158
Diller Fire & Rescue	Jeff Nelson, Fire Chief Jeff Hays, Rescue Capt.	402-520-1354 402-239-0055
Fairbury Rural Fire	Kenny Krause, Fire Chief Judd Stewart, Asst Chief Barry Schwab, Asst Chief	402-300-0097 402-729-7443 402-587-0738
Jansen Fire	Gary Hermsmeier, Fire Chief Eddie Grummert, Asst Chief	402-587-2404 402-300-1098
Jefferson Co. Ambulance District #33	Alan Rosenthal, Director Bill Seher, Asst Director	402-806-7793 402-446-0378
Plymouth Fire & Rescue	Brian Schwisow, Fire Chief Brad Eisenhauer, Rescue Capt.	402-416-1476 402-239-3494
Steele City Fire	Ian McCown, Fire Chief Steve Block, Asst Chief	402-239-0788 402-613-1299

G. Jefferson County Emergency Management Agency:

John McKee, Director 402-729-3602 (office) 402-587-0303 (cell)

Jefferson County Emergency Management Agency will assist the Chief Fire Officer / Incident Commander when deemed necessary; notify support agencies; coordinate charitable and volunteer organizations that may provide assistance; coordinate state and federal agencies that may have a disaster response role; assist with notification for the public evacuation areas or health and protective measures; and assist with training programs to enhance the skills and capabilities required for response.

H. Jefferson County Law Enforcement Agency:

Jefferson County Sheriff's Department	402-729-2284
Nick Georgi, Sheriff	402-587-0028
Jeff Horky, Chief Deputy	402-587-1557

I. Public Health Solutions Health Department 995 E Hwy 33, Crete, NE

Public Health Solutions assists as a support agency; advises on health and safety issues; and will assist with training and exercises.

Kim Showalter, Director	402-826-3880
Jen Hansen, Emergency Response Coordinator	402-826-6682
Kate Lange, Clinic Coordinator	402-826-3880

Homestead LEPC

The Homestead LEPC's responsibilities include the annual review and updating of the Hazmat Emergency Response Plan; receive reports and other information from covered facilities; coordinate community right-to-know activities including public access to information as noted in Section 324 of Sara Title and NEPCRA; assess resources necessary to implement the plan and make recommendations; encourage participation from representatives host informational meetings quarterly; and to educate the public on how they can seek information and learn how to safely shelter in place.

Chairperson: Chief Brian Daake, Beatrice Fire Dept	402-228-5246
Secretary: Lisa Wiegand	402-223-1305

County Emergency Management Agencies:

Fillmore: Jean Engle, Director - 900 G St, Geneva NE 68361	402-759-4932
Gage: Lisa Wiegand, Director -612 Grant St, Beatrice NE 68310	402-223-1305
Jefferson: John McKee, Director - 313 S K St., Fairbury NE 68352	402-729-3602
Saline: John McKee, Director 204 S. High St., Wilber NE 68465	402-821-3010
Thayer: Colt Farringer, Director -225 N 4 th St., Hebron NE 68370	402-768-2180

SALINE COUNTY RESPONDING AGENCIES:**A. Saline County Fire Department / EMS Departments:**

The primary responsibilities of fire service organizations are the prevention and suppression of fires, providing rescue services and responding to hazardous materials incidents.

Crete Fire & Rescue	Tod Allen, Fire Chief	402-560-6240
	James Yost, Assist Fire Chief	402-418-1854
	Marvin Barlow, Rescue Capt.	402-871-0005
DeWitt Fire & Rescue	Shawn Weise, Fire Chief	402-223-7036
	Tim Garrison, Asst. Fire Chief	402-230-0749
	Kerri Thornburg, Rescue Capt.	402-239-2259
Dorchester Fire & Rescue	Brant Pracheil, Fire Chief	402-826-7346
	Todd Axline, Asst Chief	402-826-0495
	Matt Steuk, Rescue Capt.	402-641-7234
Friend Fire & Rescue	Brent Milton, Fire Chief	402-641-5821
	Stan Krause, Asst Fire Chief	402-641-3844
	Kelly Paulsen, Rescue Capt.	402-471-1097
Swanton Fire	Lynn Strouf, Fire Chief	402-520-4556
	Larry Barta, Asst Fire Chief	402-239-1249
Tobias Fire	Lonnie Schafer, Fire Chief	402-520-1916
	Larry Schafer, Asst Fire Chief	402-243-3040
Western Fire & Rescue	Scott Theis, Fire Chief	402-433-5042
	Butch Nickel, Rescue Chief	402-433-5042
Wilber Fire & Rescue	Scott Havel, Fire Chief	402-821-7124
	William Togstad, Asst Chief	402-432-5477
	Craig Vyhnalek, Rescue Chief	402-826-9135

B. Saline County Emergency Management Agency:

John McKee, Director	402-821-3010 (office)	402-587-0303 (cell)
----------------------	-----------------------	---------------------

Saline County Emergency Management Agency will assist the Chief Fire Officer / Incident Commander when deemed necessary; notify support agencies; coordinate charitable and volunteer organizations that may provide assistance; coordinate state and federal agencies that may have a disaster response role; assist with notification for the public evacuation areas or health and protective measures; and assist with training programs to enhance the skills and capabilities required for response.

C. Saline County Law Enforcement Agencies:

Saline County Sheriff's Department	402-821-2111
Alan Moore, Sheriff	402-821-2111
Crete Police Department	402-826-2180
Steve Hensel, Police Chief	402-826-2180
Friend Police Department	402-947-5531
Shawn Gray, Police Chief	402-947-5531

D. Public Health Solutions Health Department 995 E Hwy 33, Crete NE

Public Health Solutions assists as a support agency; advises on health and safety issues; and will assist with training and exercises.

Kim Showalter, Director	402-826-3880
Jen Hansen, Emergency Response Coordinator	402-826-6682
Kate Lange, Clinic Coordinator	402-826-3880

E. South East Communications 911 Dispatch Center in Beatrice, NE for Crete

SE Communications serves as the 911 Dispatching Center for emergency calls for City of Crete.

Carla Zarybnicky, SE director 402-228-4080 or 402-228-5200

F. Saline County Communications Center Wilber, NE.

Saline County Communications provides 911 Dispatching Center for the county outside of the City of Crete. Also provides backup to Crete if needed.

John Baumann, Communications Supervisor	402-821-2111
Diane Troshynski, Communications Supervisor	402-821-2111

G. Homestead LEPC

The Homestead LEPC's responsibilities include the annual review and updating of the Hazmat Emergency Response Plan; receive reports and other information from covered facilities; coordinate community right-to-know activities including public access to information as noted in Section 324 of Sara Title and NEPCRA; assess resources necessary to implement the plan and make recommendations; encourage participation from representatives host informational meetings quarterly; and to educate the public on how they can seek information and learn how to safely shelter in place.

Chairperson: Chief Brian Daake, Beatrice Fire Dept	402-228-5246
Secretary: Lisa Wiegand	402-223-1305

County Emergency Management Agencies:

Fillmore: Jean Engle, Director - 900 G St, Geneva NE 68361	402-759-4932
Gage: Lisa Wiegand, Director -612 Grant St, Beatrice NE 68310	402-223-1305
Jefferson: John McKee, Director - 313 S K St., Fairbury NE 68352	402-729-3602
Saline: John McKee, Director 204 S. High St., Wilber NE 68465	402-821-3010
Thayer: Colt Farringer, Director -225 N 4 th St., Hebron NE 68370	402-768-2180

THAYER COUNTY RESPONDING AGENCIES:**A. Thayer County Fire and EMS Departments:**

The primary responsibilities of fire service organizations are the prevention and suppression of fires, providing rescue services and responding to hazardous materials incidents.

Alexandria Fire & Rescue	Evan Skiles, Fire Chief	402-300-0838
	Dan Durlinger, Assist Fire Chief	402-481-0642
	Diane Vorderstrasse, Rescue Capt.	402-768-8240
Belvedere Fire	Josh Waldmeier, Fire Chief	402-768-3697
	John Lang, Asst. Fire Chief	402-768-3444
Bruning Fire & Rescue	Cody Bentley, Fire Chief	402-768-8410
	Ryan Houser, Asst Chief	402-768-3779
	Julia Schweer, Rescue Capt.	402-223-9163
Byron Fire	Tyler Tietjen, Fire Chief	402-768-4217
	Jason Kuhlmann, Asst Fire Chief	402-200-0017
Carleton Fire & Rescue	John Lange, Fire Chief	402-768-3444
	Clint Werner, Asst Fire Chief	402-768-8851
	Nancy VanCleaf Rescue Capt.	402-768-8341
Chester Fire & Rescue	Bill Riggs, Fire Chief	402-768-4116
		785-313-5125
	Clint Easton, Asst Fire Chief	402-527-1064
Davenport Fire & Rescue	Duane Larkins, Rescue Capt.	
	Donovan Knigge, Fire Chief	402-364-3126
	Joel Reinke, Asst Chief	402-364-3093
Deshler Fire & Rescue	Berdon Pedersen, Rescue Capt.	402-310-8872
	Mike Finke, Fire Chief	402-364-3126
	Steve Krupicka, Asst Chief	402-641-8968
Gilead Fire	Wade Mees, Rescue Capt.	402-239-4693
	Mitchell Husa, Fire Chief	402-768-3021
	Matthew Vanwesten, Asst Chief	402-300-1347

Hebron Fire & Rescue	Bj Linton, Fire Chief	402-7683707
	Shayne Day, Asst Chief	402-768-1341
	Wayne Kugle, Rescue Capt.	402-768-3420
Hubbell Fire	David Svoboda, Fire Chief	402-469-3931
	Russ Svoboda, Asst Chief	402-200-0409

B. Thayer County Emergency Management Department:

Colt Farringer, Director 402-768-2180 (office) 402-879-5553 (cell)

Thayer County Emergency Management Agency will assist the Chief Fire Officer / Incident Commander when deemed necessary; notify support agencies; coordinate charitable and volunteer organizations that may provide assistance; coordinate state and federal agencies that may have a disaster response role; assist with notification for the public evacuation areas or health and protective measures; and assist with training programs to enhance the skills and capabilities required for response.

C. Thayer County Law Enforcement Agencies:

Thayer County Sheriff’s Department	402-759-4441
David Lee, Sheriff	402-768-3502
Dale Reece, Sergeant	402-768-3503

D. Public Health Solutions Health Department 995 E Hwy 33 Crete NE

Public Health Solutions assists as a support agency; advises on health and safety issues; and will assist with training and exercises.

Kim Showalter, Director	402-826-3880
Jen Hansen, Emergency Response Coordinator	402-826-6682
Kate Lange, Clinic Coordinator	402-826-3880

E. Homestead LEPC

The Homestead LEPC’s responsibilities include the annual review and updating of the Hazmat Emergency Response Plan; receive reports and other information from covered facilities; coordinate community right-to-know activities including public access to information as noted in Section 324 of Sara Title and NEPCRA; assess resources necessary to implement the plan and make recommendations; encourage participation from representatives host informational meetings quarterly; and to educate the public on how they can seek information and learn how to safely shelter in place.

Chairperson:	Chief Brian Daake, Beatrice Fire Dept	402-228-5246
Secretary:	Lisa Wiegand	402-223-1305

County Emergency Management Agencies:

Fillmore:	Jean Engle, Director - 900 G St, Geneva NE 68361	402-759-4932
-----------	--	--------------

Gage: Lisa Wiegand, Director -612 Grant St, Beatrice NE 68310 402-223-1305
 Jefferson: John McKee, Director - 313 S K St., Fairbury NE 68352 402-729-3602
 Saline: John McKee, Director 204 High St., Wilber NE 68465 402-821-3010
 Thayer: Colt Farringer, Director -225 N 4th St., Hebron NE 68370 402-768-2180

State Emergency Response Teams

Provides assistance to the Chief Fire Officer / Incident Commander or Emergency Manager if the local response becomes overwhelmed. NEMA and the County Emergency Manager must be notified if a SERT is called out. but A local disaster declaration is needed to for this response.

Nebraska Hazardous Incident Team

- The Nebraska Hazardous Incident Team (NHIT) includes members from the State Patrol, State Fire Marshal and Department of Environment and Energy. Members are employees of their respective agencies and reside across the state. A NHIT member or team is dispatched through the Nebraska State Patrol. Four NHIT Trailers are strategically located with the members to ensure a quick response to an incident and are located in the Counties of Lancaster, Madison, Lincoln and Cheyenne. The NHIT is considered a State response asset; therefore, a Governor's declaration is not needed to activate this response, but local disaster declaration is needed to for this response.
- Response members will assume positions in the incident command structure, but in no instance will they assume the position of incident commander.

MOU City Hazardous Materials Team

- Located in Beatrice, Columbus, Grand Island, Hastings, Omaha, Norfolk, North Platte, McCook (Red Willow Western Rural) and Scottsbluff. Each department has a team of hazardous materials technician level, incident commander and safety officer personnel. A local disaster declaration is needed to for this response.
- Response members will assume positions in the incident command structure, but in no instance will they assume the position of incident commander.

National Guard Assets

72nd Civil Support Team (CST)

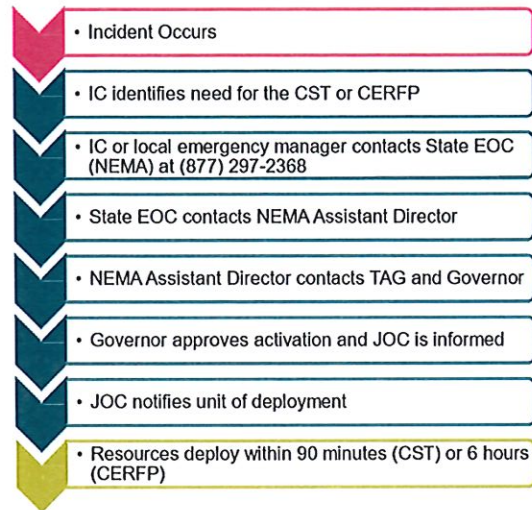
- The mission of the CST is to support civil authorities at a domestic CBRNE incident site by identifying CBRNE agents/substances, assessing current and projected consequences, advising on response measures, and assisting with appropriate requests for additional support. It is a federally funded team with 24/7 mission readiness and fully integrates into the Incident Command System. A local disaster declaration is needed to for this response.

Nebraska CBRNE Enhanced Response Force Package (CERFP)

- The mission of the CERFP is to respond to a chemical, biological, radiological and nuclear (CBRN) incident and assist local, state and federal agencies in conducting consequence management by providing capabilities to conduct patient decontamination, medical triage,

fatality search and recovery, stabilization and casualty search and extraction. The CERFP is regional response team with members from both Army and Air National Guard. There are 200+ personnel who are trained to a minimum of awareness level. Specialty training includes incident command, decontamination and search and recovery. The CERFP is prepared to move within 6 hours of notification.

Activation of National Guard Assets



Change to Line 3 above:

Please note that any request for state resources must be done through the local emergency manager to the State EOC / NEMA.

State Agencies

Nebraska Emergency Management Agency (NEMA)

- Coordinates state agency response and provides assistance and support as determined by the situation.
- Provides the SERC Administrative guidance for the LEPC.

Nebraska Department of Environment and Energy (NDEE)

- Provides technical assistance to the LEPC in its planning activities.
- Provides technical assistance for determining areas likely to be affected by a release.
- Provides technical assistance relevant to the containment and cleanup of hazardous materials incidents. They are also responsible for warning downstream water users, where applicable.

- Approves the cleanup plan and notifies the responsible person when satisfactory cleanup is achieved.
- Gives prior approval to all disposal actions.
- Contribute members to the Nebraska Hazardous Incident Team
- May require a report, following the cleanup, from the responsible person describing all aspects of the incident including cause of the release, monitoring requirements (long and short term), cleanup and disposal methods, and steps to prevent a similar occurrence. If the cleanup is to be long-term, the Department may require interim status reports.
- Is the main point of contact with the Regional Response Team (RRT), for requesting assistance, resources and coordination with Federal Agencies for response, cleanup and recovery actions.

Nebraska State Patrol (NSP)

- NSP Bomb Squad
- Contribute members to the Nebraska Hazardous Incident Team

Nebraska Department of Health and Human Services (DHHS)

- The Department of Health and Human Services, under the authority of R.R.S. 71-3513, has responsibility to issue regulations and require actions needed to meet any radiological emergency. Once notified of an incident involving radioactive materials, DHHS is responsible for health hazard assessment and controlling advising of all safety, containment, decontamination, and cleanup actions.
- DHHS notifies the public of the potential health effects of a hazardous materials incident.

Nebraska State Fire Marshal (SFM)

- Supports the local fire department's response in all working fires and hazardous materials incidents.
- Contribute members to the Nebraska Hazardous Incident Team

Nebraska Department of Agriculture (NDA)

- Provide additional technical assistance for a suspected or actual pesticide release.

Nebraska Department of Transportation (NDOT)

- Assist with road closure.

Federal Agencies

U.S. Nuclear Regulatory Commission (USNRC)

- Coordinates the overall federal technical response to a radiological emergency.
- Provides technical advice to state or local agencies.
- Assesses the nature and extent of the radiological emergency and the potential consequences to the health and safety of the public.

Environmental Protection Agency (EPA)

- Emergency planning and response branch provides technical assistance in hazardous materials spills under the National Contingency Plan.
- Establishes radiological protective action guides (PAGs) and recommends appropriate protective measures.
- During emergency operations provides personnel, equipment and laboratory support to assist DOE in monitoring activities.
- Assumes the responsibility from the Department Of Energy for the intermediate and long-term monitoring function.
- Can provide resources through the Regional Response Team (RRT). The RRT can be activated through the NDEE.
- Office of Water and Hazardous Materials provides assistance with pesticide incidents.
- Section 123 of SARA authorizes EPA to reimburse local governments, who qualify, for expenses incurred in carrying out temporary emergency measures in response to hazardous substance threats. Reimbursement is available only to local governments. To be eligible for these funds, EPA must be notified within 24 hours of the incident by calling the National Response Center at 1-800-424-8802. An application package may be obtained by calling the Local Government Reimbursement Helpline, 1-800-431-9209.

Department of Transportation (DOT)

- [Under Public Law 93-633, Section 109 \(d\)](#), DOT is required to provide information and advice in transportation emergencies involving hazardous materials. The DOT will also investigate transportation incidents and inspect for violations under their authority.

Department of Energy (DOE)

- During federal support operations, DOE will provide the personnel, an on-scene technical director and equipment for radiological monitoring and assessment activities.

National Response Center (NRC)

- Receives and relays notices of releases to the appropriate On-Scene Commander (OSC) and disseminates OSC and Regional Response Team (RRT) reports to the National Response Team (NRT).

Non-Governmental Agencies

American Red Cross

- *Provide for temporary shelter, feeding, welfare inquiries and information services.*
Please reference the County LEOP for full resources.
[Include additional NGOs, as necessary.]

Regulated Facilities

[Nebraska RRS 81-15,219](#) requires the owner or operator of the facility to provide the committee the name of a facility representative who will participate in the emergency planning

process as a facility emergency coordinator, within thirty days after the establishment of a committee for the emergency planning district in which a reporting facility is located. The owner or operator of the facility shall promptly inform the committee of any relevant changes occurring at the facility as changes occur or are expected to occur. Upon request from the committee, the owner or operator of the facility shall promptly provide information to the committee, which is necessary for developing and implementing the emergency plan.

- Report chemical inventories to the State Emergency Response Commission (SERC), LEPC, and local fire department.
- Submit Tier Two-Emergency and Hazardous Chemical Inventory Report and other information as required, by federal, state or local law.
- Prepare hazardous materials emergency plans and provide copies to the Homestead LEPC when requested.
- Train and equip personnel to implement the plans.
- Coordinate plans with the local fire jurisdictions.
- Notify 9-1-1, and other agencies as required or necessary, when a hazardous materials incident occurs.
- Implement emergency plans utilizing NIMS in coordination with the local fire jurisdictions.
- Include evacuation routes and methods of evacuation for employees and visitors, both on site and in the immediate proximity, in hazardous materials emergency plans.

Shipper

- Under the regulations of the U.S. Department of Transportation (DOT) and the Nuclear Regulatory Commission, the shipper of hazardous materials is responsible for complying with all applicable regulations in packaging, labeling, marking, and otherwise preparing any goods for transport by carrier. The shipper must certify on the shipping papers that applicable regulatory requirements have been met.
- DOT regulations also require the shipper to inform the carrier of any special precautions that must be taken in the transport of the goods.
- If called in case of an incident, the shipper is also required to provide whatever details about the shipment that are necessary and helpful. The shipper may wish to offer assistance in confining and cleaning up any incident involving his shipment.
- The shipper must also provide a list of 24-hour telephone contacts of persons familiar with the technical details of the shipment.

Carrier:

- The carrier is responsible for handling, stowing, storing shipments, and placarding vehicles in accordance with DOT regulations and exercising due care in transporting the shipment to the consignee.
- In the event of an incident, the carrier is responsible for initial actions to include notification of appropriate governments, the shipper, DOT, and possibly the Department of Energy (DOE).

- The carrier also has the basic responsibility for containing or confining any threat associated with the cargo in his possession, whether or not radioactive materials or other hazardous materials are involved.
- During recovery, the carrier also has the basic responsibility to see that the cleanup/decontamination is completed.

Radiological licensees:

- They either must comply with the Nebraska Radiation Control Act ([RRS 71-3501 to 71-3519](#)) or must be covered by an appropriate reciprocal procedure.
- In the event of a radiological incident, licensees must respond as required by DHHS regulations. Licensees may assume the responsibilities of the shipper when radioactive materials under their control must be transported by a carrier.

TRAINING

The Homestead LEPC acknowledges that Nebraska RRS 81-15, 220 (8) requires training programs including schedules for training of local emergency response and medical personnel. Hazardous materials training available to local emergency responders is updated annually and maintained in Appendix F.

All hazardous materials incident emergency responders and workers at hazardous materials facilities, transport companies, waste treatment facilities, storage facilities and disposal facilities will be provided training which meets federal and state standards. Such training will be commensurate with their employers or organization's plan and policies.

Responder competency levels shall conform to the standards set in National Fire Protection Association (NFPA) 472 - *Standard for Professional Competence of Responders to Hazardous Materials Incidents*.

EXERCISE

The Homestead LEPC acknowledges that Nebraska RRS 81-15, 220 (9) requires plans for methods to exercise the emergency plan and the schedule will be updated and maintained.

The Homestead LEPC will provide for and organize a exercise of this plan to evaluate the effectiveness and feasibility of the plan and supporting, standard operating procedures as well as the readiness of response agencies, facilities and the public. These exercises may be discussion-based seminars, workshops, tabletops and games or operation-based drills, functional, and full-scale in order to test the full spectrum of preparedness.

The Homestead LEPC will follow the *Homeland Security Exercise and Evaluation Program* (HSEEP) as a standard for exercise design, conduct and evaluation. As such, exercises will be documented in an After Action Report (AAR) and corrective actions will be identified and assigned in an improvement plan.

EPCRA REPORTING

All facilities within *[emergency planning district name]* receiving, storing and/or using extremely hazardous substances (EHS), shall comply with [Nebraska RSS 81-15,224](#).

REFERENCES

[FEMA, *Guide for All-Hazard Emergency Operations Planning \(SLG-101\)*](#)

[US Department of Transportation and Transport Canada, *Emergency Response Guidebook*](#)

[SARA Title III – *Emergency Planning and Community Right-to-Know Act \(EPCRA\)*](#)

[Public Law 99-499 – *Superfund Amendment and Reauthorization Act \(SARA\)*](#)

[Title 67, Nebraska Administrative Code, Chapter 7 – *Rules and Regulations Concerning Standards and Requirements for Emergency Operations Plans*](#)

ACRONYMS

[Examples only, tailor to your jurisdiction's needs]

CAMEO	Computer Aided Management for Emergency Operations
CHEMTREC	Chemical Transportation Emergency Center
DHHS	Department of Health and Human Services
EAS	Emergency Alert System
EHS	Extremely Hazardous Substances
EMS	Emergency Medical Services
EOC	Emergency Operations Center
EPCRA	Emergency Planning and Community Right-to-Know Act
ERG	Emergency Response Guide Book
ESF	Emergency Support Function
HAZMAT	Hazardous Material
IC	Incident Commander
ICS	Incident Command System
ICP	Incident Command Post
JIC	Joint Information Center
LEPC	Local Emergency Planning Committee
LEOP	Local Emergency Operations Plan
MARPLOT	Mapping Applications for Response, Planning, and Local Operational Tasks
SDS	Safety Data Sheet
NAC	Nebraska Administrative Code
NIMS	National Incident Management System
OSHA	Occupational Safety and Health Administration
PIO	Public Information Officer
RSS	Revised State Statute
SEOC	State Emergency Operations Center
SERC	State Emergency Response Commission
SOP	Standard Operating Procedures
TERC	Tribal Emergency Response Commission
THIRA	Threat Hazard Identification and Risk Assessment
UC	Unified Command

[Include maps showing the locations of facilities with extremely hazardous substances.]

Appendix B – Agency Contact Information (SAMPLE)

Agency	Emergency Contact Name	Emergency Contact #
State Emergency Response Commission	Alyssa Sanders, Coordinator	402-471-7176
Nebraska Dept. of Environment and Energy		402-471-2186
Nebraska Emergency Management Agency		402-471-7421
Nebraska Emergency Management Agency - After Hours	Watch Officer	877-297-2368
State Fire Marshal		402-471-2027
Nebraska State Patrol		402-471-4545
Nebraska Department of Health and Human Services		402-471-2541
Nebraska Game and Parks		402-471-5547
Nebraska Dept of Roads (local District)		
NDOT Aeronautics Division (downed aircraft, non-military)		402-471-2371
National Guard, contact NEMA		402-471-7421
Emergency Planning, Community Right-to-know Act (EPCRA) Hotline		800-424-9346
CHEMTREC		800-424-9300
National Response Center/ Spill reporting		800-424-8802 http://www.nrc.uscg.mil/nrchp.html
U.S. National Response Team (chemical guides, biologicals)		http://www.nrt.org
Poison Control Center (PCC) [for pesticides]		800-955-9119
National Poison Control Center (directs to the nearest PCC)		800-222-1222
Union Pacific Railroad		800-877-0511
U. P. Response Management Communications Center		888-877-7267
Burlington Northern Santa Fe Railroad		817-234-6164
Nebraska Kansas Colorado Railroad		800-331-3115
Nebraska Central Railroad Company		402-562-6155 day,
Natural Gas Pipeline		800-733-2400
Enterprise Products Operating L. P. gas		800-546-3482
Jayhawk Pipeline, L.L.C.		888-542-9575
Kaneb Pipeline Op Partnership, NuStar Energy L.P.		800-759-0033
Kinder Morgan Energy Partners		888-844-5658
Kinder Morgan Interstate Gas Transmission LLC		888-763-3690

Appendix C - Public Safety Procedures

Shelter-in-Place

Evacuation

Sample Evacuation Warning Message

Appendix D – Evacuation Plans

Evacuation Plan

Please note:

Industry Evacuation Plans are placed on file with the County Emergency Management Agency and Fire and Rescue Districts within the response area.

Appendix E – Response Resources

Industry Evacuation Plans are placed on file with the County Emergency Management Agency and Fire / d Rescue Districts within the response area.

FACILITY / AGENCY	EQUIPMENT	CONTACT	PHONE #	PREEXISTING AGREEMENT
				r

Appendix F - Training Schedule

Training is available monthly within the Homestead LEPC, South East PET Region, Nebraska Emergency Management Agency and Fire / Rescue Departments.

Here is a list of training that has been held to date:

Hazardous Materials Courses	Dates	Locations
<i>Hazardous Materials Awareness</i>	•	•
Awareness-Operations	•	•
Hazardous Materials Operations		
Hazardous Materials Technician	•	•
Hazardous Materials On-Scene Incident Command	•	•
MERRTT		
HAZWOPPER	•	•
Advanced Tank Rollover	•	•
	•	•

Appendix G – Exercise Schedule

(SAMPLE)

Training / Exercises are made available within the Homestead LEPC, South East PET Region, Nebraska Emergency Management Agency and Fire / Rescue Departments.

Here is a list of training that has been held to date:

Type	Date(s)	Location	Planner
<i>Tabletop</i>			
<i>Workshop</i>			
<i>Full-Scale</i>			

Appendix H – Incident Report

HAZARDOUS MATERIALS INCIDENT REPORT

INITIAL CONTACT INFORMATION

(Check one): _____ REPORTED/ACTUAL INCIDENT _____ DRILL/EXERCISE

1. Date/Time of Notification: _____ Report received by: _____
2. Reported by (name & phone number or radio call signs): _____

3. Company/agency and position (if applicable): _____
4. Incident address/descriptive location: _____

5. Agencies at the scene: _____

HAZARDOUS MATERIAL INVOLVED

7. Nature of emergency: (check all that apply)
___ Leak ___ Explosion ___ Spill ___ Fire ___ Derailment ___ Other
Description: _____

8. Name of material(s) released/placard number(s): _____
9. Release of materials:
_____ Has ended _____ Is continuing. Estimated release rate & duration: _____
10. Estimated amount of material which has been released: _____
11. Estimated amount of material which may be released: _____
12. Media into which the release occurred: _____ air _____ ground _____ water
13. Plume characteristics:
 - a. Direction (Compass direction of plume): _____
 - b. Height of plume: _____
 - c. Color: _____
 - d. Odor: _____
14. Characteristics of material (color, smell, liquid, gaseous, solid, etc) _____
15. Present status of material (solid, liquid, and gas): _____
16. Apparently responsible party or parties: _____

ENVIRONMENTAL CONDITIONS

17. Current weather conditions at incident site:
Wind From: _____ Wind Speed (mph): _____ Temperature (F): _____
Humidity (%): _____ Precipitation: _____ Visibility: _____
18. Forecast: _____
19. Terrain conditions: _____

HAZARD INFORMATION
(From ERG, SDS, CHEMTREC, or facility)

- 20. Potential hazards: _____
- 21. Potential health effects: _____
- 22. Safety recommendations: _____
- 23. Recommended evacuation distance: _____

EXTERNAL NOTIFICATIONS

- 24. Notifications made to: _____
- _____
- _____
- _____
- _____

DESCRIPTION OF INCIDENT

- 25. Estimated areas/ populations at risk: _____
- 26. Known damage/casualties: _____
- _____
- _____
- 27. Tools used for formulating protective actions
 - _____ a. Recommendations by facility operator/responsible party
 - _____ b. *Emergency Response Guidebook*
 - _____ c. Material Safety Data Sheet
 - _____ d. Recommendations by CHEMTREC
 - _____ e. Results of incident modeling (CAMEO or similar software)
 - _____ f. Other: _____
- 28. Protective action recommendations:
____ Evacuation ____ Shelter-In-Place ____ Combination ____ No Action
____ Other _____
Time Actions Ordered/Implemented

- 29. Evacuation Routes Recommended: _____
- 30. Exposures:
 - _____ a. Explosion
 - _____ b. Fire
 - _____ c. Environmental Damage

31. Actions taken to respond:

[Insert narrative here]

32. Location & disposal method of hazardous/contaminated materials _____

33. Incident report completed by: _____

Saline County Clerk

REPORT OF FEES

February 2022

Photocopies & Handling Fees	\$	34.00
Fax Fees & Emailing Fees	\$	88.00
Phone & Written Searches	\$	-
Certified Copies	\$	72.00
Plat Books/Farm & Home Directory & Hdlg	\$	27.00
Maps	\$	-
Tax Liens (Federal & State)	\$	-
Marriage Licenses	\$	125.00
Election, voter registration lists, etc.	\$	15.00
Real Estate	\$	4,069.00
Documentary Stamp Tax	\$	9,582.75
Game & Parks Fees	\$	57.00
TOTAL	\$	14,069.75

Approved

This 15th day of March, 2022

County Board

Saline County Board
Monthly Fees/Fines Report
From 02/01/2022 to 02/28/2022

Account Description	Total Amount
Petition	140.00
Automation Fee	104.00
Transcript of Lien	150.00
Probation Admn Enrollment Fee	30.00
Probation Fee (Monthly)	2,530.00
NSC Education Fee	13.00
Dispute Resolution Fee	9.75
Indigent Defense Fee	39.00
Uniform Data Analysis Fee	13.00
PSC Supervision Fee	100.00
PSC Local Fee	40.00
PSC Substance Abuse Testing-St	5.00
Dissolution Fee	75.00
Parenting Act Fund	200.00
J.R.F.	100.00
Filing Fee-JRF	49.00
Civil Legal Services Fund	2.00
L.E.I.F.	4.00
Legal Aid/Services Fund	15.00
Legal Aid/Services Fund	81.25
Comp Rec/Records Management Fe	150.00
Photocopy Fees	22.00
Interest on Bank Account	3.72
Service Fees	25.00
Substance Abuse Testing Fees	605.00
Postage	215.60
Fines	260.00
Property Settlement	500.00
Judgment (General)	300.00
Passport Processing Fee-County	1,575.00
HHS Account	2,000.00
Bindover Ten Percent Bond	7,650.00
Bond	.00
Holding Acct	14,381.00
Grand Total	31,387.32

APPROVED

This 15 Day of March 20 22

COUNTY BOARD

Chairman

State of Nebraska } ss
Saline County
Filed in the County Clerks
office Saline County, Nebraska

MAR 01 2022

at _____ o'clock and _____ minute
County Clerk

SALINE COUNTY DISTRICT COURT
Cases Filed Report
For the Month of February , 2022

Cases Filed	Prior Pending	New Filings	Reopened Cases	Disposed Cases	Current Pending	Appealed Cases	Assign Co. Judge
Criminal							
Felony - Filed	0	0	0	0	0	0	
Felony - Bindovers	44	2	0	1	45	0	
Miscellaneous	0	0	0	0	0	0	
Misdemeanor	0	0	0	0	0	0	
Appeals - Trial Court	0	0	0	0	0	0	
	-----	-----	-----	-----	-----	-----	
Total Criminal	44	2	0	1	45	0	
Traffic							
Appeals - Trial Court	0	0	0	0	0	0	
	-----	-----	-----	-----	-----	-----	
Total Traffic	0	0	0	0	0	0	
Civil							
Tort	5	0	0	0	5	0	
Contract	4	0	0	0	4	0	
Real Property	4	0	0	0	4	0	
Miscellaneous	9	1	0	1	9	0	
Condemnation	0	0	0	0	0	0	
Appeals - Admin Agency	0	0	0	0	0	0	
Appeals - Trial Court	0	0	0	0	0	0	
	-----	-----	-----	-----	-----	-----	
Total Civil	22	1	0	1	22	0	
Domestic Relations							
Marriage Dissolution	34	3	1	2	36	0	0
Support/Custody	18	0	1	3	16	0	0
Paternity	11	0	0	1	10	0	0
URESA	2	0	0	0	2	0	0
Protection Orders	5	5	0	4	6	0	5
Miscellaneous	0	0	0	0	0	0	0
Appeals - Trial Court	0	0	0	0	0	0	0
	-----	-----	-----	-----	-----	-----	-----
Total Domestic Relations	70	8	2	10	70	0	5
Estate							
Appeals - Trial Court	0	0	0	0	0	0	
	-----	-----	-----	-----	-----	-----	
Total Estate	0	0	0	0	0	0	
Subtotal	136	11	2	12	137	0	
Juvenile							
Misdemeanor/Infraction	0	0	0	0	0	0	
Felony	0	0	0	0	0	0	
Neglected/Dependent	0	0	0	0	0	0	
Status Offender	0	0	0	0	0	0	
Mentally Ill and Dangerous	0	0	0	0	0	0	
Parental	0	0	0	0	0	0	
	-----	-----	-----	-----	-----	-----	
Total Juvenile	0	0	0	0	0	0	
Total Cases Filed	136	11	2	12	137	0	

Disposition	Appeals					Total
	Civil	Small Claims	Dom. Rel.	Probate	From Trial Court/Admin Agency	
Jury-Verdict Issued	0	0	0	0	0	0
Jury-Disposed Before Verdict	0	0	0	0	0	0
Tried to Court	0	0	2	0	0	2
Uncontested/Default	0	0	2	0	0	2
Dismissed by Party	1	0	3	0	0	4
Dismissed by Court	0	0	3	0	0	3
Suggestion of Bankruptcy	0	0	0	0	0	0
Transferred	0	0	0	0	0	0
Stipulation Agreement/Payment (CC O	0	0	0	0	0	0
Total	1	0	10	0	0	11

Month of February, 2022

Date: 03/01/2022

CRIMINAL - TRAFFIC - JUVENILE DISPOSITIONS

Time: 09:05:19

Disposition	Felony	Misdemeanor	Traffic	Juvenile	Appeals from Trial Court	Total

Jury Impaneled:						
a. Verdict Issued	0	0	0	0	0	0
b. Disposed Prior to Verdict	0	0	0	0	0	0
Tried to Court	0	0	0	0	0	0
Preliminary Hearing Held:						
a. Bound Over	0	0	0	0	0	0
b. Dismissed by Court	0	0	0	0	0	0
Preliminary Hearing Waived	0	0	0	0	0	0
Felony Reduced to Misdemeanor	0	0	0	0	0	0
Dismissed by Prosecutor	0	0	0	0	0	0
Dismissed by Court Prior to Trial	0	0	0	0	0	0
Transferred	0	0	0	0	0	0
Guilty Plea in Court	1	0	0	0	0	1
Guilty Plea by Waiver	0	0	0	0	0	0

Total Dispositions	1	0	0	0	0	1

9:48 AM
03/03/22
Accrual Basis

**Saline Civil Account
Transactions by Account
As of February 28, 2022**

State of Nebraska } SS
Saline County }
Filed in the County Clerks
office Saline County, Nebraska

MAR 09 2022

Type	Date	Num	Name	Memo	Split	Amount	at	o'clock	Balance
200 · Due to County Treasurer									2,472.39
201 · Writ Fees									1,080.00
Invoice	02/01/2022	227-28	General Service Bureau - Court Account	Writ Fees-Erin ...	120 · A/R	18.00			1,098.00
Invoice	02/01/2022	227-06	State	Writ Fees-Eric H...	120 · A/R	6.00			1,104.00
Invoice	02/01/2022	227-07	State	Writ Fees-Eric H...	120 · A/R	6.00			1,110.00
Invoice	02/01/2022	227-29	Collection Agency, LLC	Writ Fees-Kendr...	120 · A/R	18.00			1,128.00
Invoice	02/01/2022	227-30	Collection Agency, LLC	Writ Fees-Estela...	120 · A/R	6.00			1,134.00
Invoice	02/01/2022	227-65	Collection Agency, LLC	Writ Fees-Keise...	120 · A/R	6.00			1,140.00
Check	02/02/2022	9697	Saline County Treasurer	Jan 2022 Fees	100 · Ca...	-1,080.00			60.00
Invoice	02/02/2022	227-32	AR Solutions Inc	Writ Fees-Myom...	120 · A/R	18.00			78.00
Invoice	02/02/2022	227-31	State	Writ Fees-Tanne...	120 · A/R	18.00			96.00
Invoice	02/02/2022	227-33	State	Writ Fees-Paolo...	120 · A/R	18.00			114.00
Invoice	02/02/2022	227-34	Collection Agency, LLC	Writ Fees-Jason...	120 · A/R	6.00			120.00
Invoice	02/03/2022	227-36	AR Solutions Inc	Writ Fees-Cleo ...	120 · A/R	27.00			147.00
Invoice	02/03/2022	227-37	State	Writ Fees-Damo...	120 · A/R	27.00			174.00
Invoice	02/03/2022	227-38	Credit Management	Writ Fees-Edwin...	120 · A/R	6.00			180.00
Invoice	02/03/2022	227-35	Collection Agency, LLC	Writ Fees-Jame...	120 · A/R	27.00			207.00
Invoice	02/04/2022	227-39	General Collection Co., Inc.	Writ Fees-Micha...	120 · A/R	18.00			225.00
Invoice	02/07/2022	227-46	Gurstel Law Firm, PC	Writ Fees-Brend...	120 · A/R	18.00			243.00
Invoice	02/07/2022	227-44	Messerli & Kramer PA	Writ Fees-Sama...	120 · A/R	6.00			249.00
Invoice	02/07/2022	227-45	Messerli & Kramer PA	Writ Fees-Troy ...	120 · A/R	18.00			267.00
Invoice	02/07/2022	227-42	State	Writ Fees-Dusti...	120 · A/R	18.00			285.00
Invoice	02/07/2022	227-43	State	Writ Fees-Eima...	120 · A/R	18.00			303.00
Invoice	02/07/2022	227-48	State	Writ Fees-Jorda...	120 · A/R	18.00			321.00
Invoice	02/07/2022	227-47	Credit Management	Writ Fees-Willia...	120 · A/R	18.00			339.00
Invoice	02/07/2022	227-40	James A Cada	Writ Fees-Jennif...	120 · A/R	18.00			357.00
Invoice	02/07/2022	227-41	Credit Bureau Services, Inc	Writ Fees-Shara...	120 · A/R	27.00			384.00
Invoice	02/08/2022	227-52	Jefferson Capital Systems, LLC	Writ Fees-Lynett...	120 · A/R	18.00			402.00
Invoice	02/08/2022	227-49	Credit Management	Writ Fees-Ignaci...	120 · A/R	18.00			420.00
Invoice	02/09/2022	227-51	Collection Agency, LLC	Writ Fees-Chris/...	120 · A/R	6.00			426.00
Invoice	02/09/2022	227-55	PBS Aircraft Co Inc	Writ Fees-Turza ...	120 · A/R	18.00			444.00
Invoice	02/09/2022	227-50	James A Cada	Writ Fees-Warre...	120 · A/R	6.00			450.00
Invoice	02/09/2022	227-53	James A Cada	Writ Fees-Cesar...	120 · A/R	27.00			477.00
Invoice	02/09/2022	227-54	James A Cada	Writ Fees-Elvina...	120 · A/R	18.00			495.00
Invoice	02/11/2022	227-56	State	Writ Fees-Deng ...	120 · A/R	18.00			513.00
Invoice	02/11/2022	227-57	State	Writ Fees-Aullie ...	120 · A/R	18.00			531.00
Invoice	02/14/2022	227-59	Kalkwarf & Smith Law Offices, LLC	Writ Fees-Rober...	120 · A/R	18.00			549.00
Invoice	02/15/2022	227-63	State	Writ Fees-Jame...	120 · A/R	18.00			567.00
Invoice	02/15/2022	227-64	Credit Management	Writ Fees-Mega...	120 · A/R	18.00			585.00
Invoice	02/15/2022	227-62	James A Cada	Writ Fees-Letici...	120 · A/R	18.00			603.00
Invoice	02/15/2022	227-61	James A Cada	Writ Fees-Curtis...	120 · A/R	27.00			630.00
Invoice	02/17/2022	227-66	James A Cada	Writ Fees-Isabel...	120 · A/R	6.00			636.00
Invoice	02/18/2022	227-67	State	Writ Fees-Laura...	120 · A/R	18.00			654.00
Invoice	02/22/2022	227-70	Messerli & Kramer PA	Writ Fees-Erika ...	120 · A/R	18.00			672.00

9:48 AM
 03/03/22
 Accrual Basis

Saline Civil Account
Transactions by Account
 As of February 28, 2022

Type	Date	Num	Name	Memo	Split	Amount	Balance
Invoice	02/22/2022	227-68	Firefly Legal, Inc	Writ Fees-Jessic...	120 · A/R	6.00	678.00
Invoice	02/22/2022	227-71	James A Cada	Writ Fees-Wesl...	120 · A/R	18.00	696.00
Invoice	02/22/2022	227-69	State	Writ Fees-Stacy ...	120 · A/R	18.00	714.00
Invoice	02/23/2022	227-77	Gurstel Law Firm, PC	Writ Fees-Alexy ...	120 · A/R	6.00	720.00
Invoice	02/23/2022	227-72	Credit Management	Writ Fees-Micha...	120 · A/R	18.00	738.00
Invoice	02/24/2022	227-75	Credit Management	Writ Fees-Jame...	120 · A/R	18.00	756.00
Invoice	02/24/2022	227-76	Credit Management	Writ Fees-Crista...	120 · A/R	18.00	774.00
Invoice	02/24/2022	227-80	State	Writ Fees-Edwin...	120 · A/R	18.00	792.00
Invoice	02/25/2022	227-74	PBS Aircraft Co Inc	Writ Fees-Jesus...	120 · A/R	18.00	810.00
Invoice	02/25/2022	227-78	State	Writ Fees-Thom...	120 · A/R	6.00	816.00
Total 201 · Writ Fees						-264.00	816.00
202 · Mileage							1,012.39
Invoice	02/01/2022	227-28	General Service Bureau - Court Account	Mileage-Erin We...	120 · A/R	15.13	1,027.52
Invoice	02/01/2022	227-06	State	Mileage-Eric Ha...	120 · A/R	17.55	1,045.07
Invoice	02/01/2022	227-07	State	Mileage-Eric Ha...	120 · A/R	17.55	1,062.62
Invoice	02/01/2022	227-29	Collection Agency, LLC	Mileage-Kendra ...	120 · A/R	6.66	1,069.28
Invoice	02/01/2022	227-30	Collection Agency, LLC	Mileage-Estela ...	120 · A/R	16.94	1,086.22
Invoice	02/01/2022	227-65	Collection Agency, LLC	Mileage-Kelsey ...	120 · A/R	17.55	1,103.77
Check	02/02/2022	9697	Saline County Treasurer	Jan 2022 Fees	100 · Ca...	-1,012.39	91.38
Invoice	02/02/2022	227-32	AR Solutions Inc	Mileage-Myoma ...	120 · A/R	15.13	106.51
Invoice	02/02/2022	227-31	State	Mileage-Tanner ...	120 · A/R	1.21	107.72
Invoice	02/02/2022	227-33	State	Mileage-Paolo J...	120 · A/R	13.92	121.64
Invoice	02/02/2022	227-34	Collection Agency, LLC	Mileage-Jason H...	120 · A/R	14.52	136.16
Invoice	02/03/2022	227-36	AR Solutions Inc	Mileage-Cleo Bl...	120 · A/R	14.52	150.68
Invoice	02/03/2022	227-37	State	Mileage-Damon ...	120 · A/R	16.34	167.02
Invoice	02/03/2022	227-38	Credit Management	Mileage-Edwin E...	120 · A/R	13.92	180.94
Invoice	02/03/2022	227-35	Collection Agency, LLC	Mileage-James ...	120 · A/R	28.44	209.38
Invoice	02/04/2022	227-39	General Collection Co., Inc.	Mileage-Michael...	120 · A/R	0.00	209.38
Invoice	02/07/2022	227-46	Gurstel Law Firm, PC	Mileage-Brende...	120 · A/R	13.92	223.30
Invoice	02/07/2022	227-44	Messerli & Kramer PA	Mileage-Samant...	120 · A/R	14.52	237.82
Invoice	02/07/2022	227-45	Messerli & Kramer PA	Mileage-Troy Mil...	120 · A/R	0.61	238.43
Invoice	02/07/2022	227-42	State	Mileage-Dustin ...	120 · A/R	13.92	252.35
Invoice	02/07/2022	227-43	State	Mileage-Eiman ...	120 · A/R	20.57	272.92
Invoice	02/07/2022	227-48	State	Mileage-Jordan ...	120 · A/R	26.02	298.94
Invoice	02/07/2022	227-47	Credit Management	Mileage-William ...	120 · A/R	21.18	320.12
Invoice	02/07/2022	227-40	James A Cada	Mileage-Jennifer...	120 · A/R	0.61	320.73
Invoice	02/07/2022	227-41	Credit Bureau Services, Inc	Mileage-Shara L...	120 · A/R	13.92	334.65
Invoice	02/08/2022	227-52	Jefferson Capital Systems, LLC	Mileage-Lynette ...	120 · A/R	15.73	350.38
Invoice	02/08/2022	227-49	Credit Management	Mileage-Ignacio ...	120 · A/R	14.52	364.90
Invoice	02/09/2022	227-51	Collection Agency, LLC	Mileage-Chris/Kr...	120 · A/R	7.87	372.77
Invoice	02/09/2022	227-55	PBS Aircraft Co Inc	Mileage-Turza M...	120 · A/R	13.92	386.69
Invoice	02/09/2022	227-50	James A Cada	Mileage-Warren ...	120 · A/R	0.00	386.69
Invoice	02/09/2022	227-53	James A Cada	Mileage-Cesar L...	120 · A/R	13.92	400.61

9:48 AM
03/03/22
Accrual Basis

Saline Civil Account
Transactions by Account
As of February 28, 2022

Type	Date	Num	Name	Memo	Split	Amount	Balance
Invoice	02/09/2022	227-54	James A Cada	Mileage-Elvina L...	120 · A/R	13.92	414.53
Invoice	02/11/2022	227-56	State	Mileage-Deng A ...	120 · A/R	0.61	415.14
Invoice	02/11/2022	227-57	State	Mileage-Aullie T...	120 · A/R	0.00	415.14
Invoice	02/14/2022	227-59	Kalkwarf & Smith Law Offices, LLC	Mileage-Robert ...	120 · A/R	15.13	430.27
Invoice	02/15/2022	227-63	State	Mileage-James ...	120 · A/R	13.92	444.19
Invoice	02/15/2022	227-64	Credit Management	Mileage-Megan ...	120 · A/R	32.67	476.86
Invoice	02/15/2022	227-62	James A Cada	Mileage-Leticia ...	120 · A/R	14.52	491.38
Invoice	02/15/2022	227-61	James A Cada	Mileage-Curtis/E...	120 · A/R	13.92	505.30
Invoice	02/17/2022	227-66	James A Cada	Mileage-Isabella...	120 · A/R	13.92	519.22
Invoice	02/18/2022	227-67	State	Mileage-Laura M...	120 · A/R	0.61	519.83
Invoice	02/22/2022	227-70	Messerli & Kramer PA	Mileage-Erika B...	120 · A/R	7.87	527.70
Invoice	02/22/2022	227-68	Firefly Legal, Inc	Mileage-Jessica ...	120 · A/R	15.13	542.83
Invoice	02/22/2022	227-71	James A Cada	Mileage-Wesley ...	120 · A/R	0.61	543.44
Invoice	02/22/2022	227-69	State	Mileage-Stacy G...	120 · A/R	35.09	578.53
Invoice	02/23/2022	227-77	Gurstel Law Firm, PC	Mileage-Alexy D...	120 · A/R	13.92	592.45
Invoice	02/23/2022	227-72	Credit Management	Mileage-Michael...	120 · A/R	8.47	600.92
Invoice	02/24/2022	227-75	Credit Management	Mileage-James ...	120 · A/R	19.97	620.89
Invoice	02/24/2022	227-76	Credit Management	Mileage-Cristal ...	120 · A/R	13.92	634.81
Invoice	02/24/2022	227-80	State	Mileage-Edwin E...	120 · A/R	13.92	648.73
Invoice	02/25/2022	227-74	PBS Aircraft Co Inc	Mileage-Jesus L...	120 · A/R	13.92	662.65
Invoice	02/25/2022	227-78	State	Mileage-Thomas...	120 · A/R	13.92	676.57
Total 202 · Mileage						-335.82	676.57
203 · Vehicle Inspections							310.00
General ...	02/02/2022	203			-SPLIT-	-310.00	0.00
Sales Re...	02/28/2022	Feb 2022	Saline County Treasurer	Title Inspections...	160 · On...	550.00	550.00
Total 203 · Vehicle Inspections						240.00	550.00
204 · Gun Permits							70.00
General ...	02/02/2022	203			203 · Ve...	-70.00	0.00
Sales Re...	02/28/2022	Feb 2022	Saline County Treasurer	Sun Permits 73...	160 · On...	110.00	110.00
Total 204 · Gun Permits						40.00	110.00
208 · Miscellaneous							0.00
Total 208 · Miscellaneous							0.00
Total 200 · Due to County Treasurer						-319.82	2,152.57
TOTAL	816,00 Writ Fees				Chairman	-319.82	2,152.57
	676.57 Mileage						
	550.00 Vehicle Inspections						
	110.00 Gun Permits						
	<u>\$2,152.57</u>						

This 15 Day of March 20 22

COUNTY BOARD

Resolution 2022-09
Approving of Securities

Of
Citizens State Bank

It was moved by _____ that the following resolution be adopted.

RESOLVED that application for designation as County Depository by Citizens State Bank and that the deposit of the following securities aggregating in the amount the sum of:

\$15,000.00 Cusip #077460AH6

as a pledge to secure deposits of the public moneys of this county in said Bank be and the same hereby is approved as to said securities and the deposit thereof with said trustee, on condition that said trustee issue its trust receipt therefore, as provided for by Section 77-2328 R.S.Neb. 1943.

RESOLVED, further, that said trust receipt when issued by said trustee shall be deposited by said Bank with the County Clerk of this County in lieu of the deposit of said securities with said County Clerk as a pledge to secure the deposit of said moneys in said Bank.

RESOLVED, further that such trust receipt shall contain the following provisions which shall constitute the terms and conditions of the escrow.

I

When the interest coupons attached to said bonds become due, the proceeds of collection shall be applied to the credit of said bank.

II

The above securities shall be delivered to said bank only: (1) upon the joint order of the County Clerk and County Commissioners or Board of Supervisors of said county with resolution approving substitution of other securities, or (2) upon receipt of certificate of said County Treasurer that all deposits secured thereby have been repaid.

III

On presentation by the bank to the trustee of a certificate from the County Treasurer under seal, stating the amount of the deposits in said bank, together with a certified copy of a resolution of the County Board approving such withdrawal, the trustee may deliver to said bank designated securities in excess of 110 percent of the deposits based on the then market value of securities deposited.

IV

The above securities shall be delivered to the County Clerk of said county upon written demand, (without further responsibility on the part of the trustee) supported by certified copy of resolution of the County Commissioners or Board of Supervisors of said county and

(1) a certificate from the office of the Department of Banking, under seal certifying that possession of said bank has been taken by said Department, or

(2) proof that a receiver of said bank has been applied for, with an affidavit signed by the County Clerk and attested by the County Treasurer under seal, or

(3) an affidavit of the Treasurer of said county that said bank has been unable to pay any check drawn by him on said bank.

Said county shall have the right to dispose of said securities and reimburse the county to the extent and for the amount of the deposit with interest in said bank.

The trustee may at any time act in reliance upon the signature of any public officer, attested by his official seal, without liability to either the county or said bank.

VI

Said securities shall be held by the trustee without cost to the county and said bank shall pay all costs, expenses and charges for the safekeeping, transportation and handling of said securities. The county shall not be responsible for any loss of said securities or coupons thereon.

VII

The trustee will give to said securities the same care it gives to its own property, but beyond that it will not and does not assume any responsibility.

VIII

RESOLVED, further, that a copy of this resolution duly certified by the County Clerk of this County be transmitted to said trustee, and shall constitute the escrow agreement.

The motion was seconded by _____ and on roll call, the vote was as follows:

AYES	NAYS
_____	_____
_____	_____
_____	_____
_____	_____
_____	_____

The chairman declared the resolution adopted.

This is to certify that the foregoing is a true and correct copy of the resolution duly adopted by the County Board of Saline County, Nebraska, at a regular meeting of said Board held at Wilber, Nebraska, on the 15th day of March 2022, at which a quorum was present as shown by the minutes of said meeting and that said resolution is now in full force and effect.

In Witness Whereof, I have hereunto subscribed my name and affixed my official seal this 15th day of March 2022.

County Clerk of Saline County, Nebraska

OFFICIAL SEAL

RESOLUTION #2022-08

BE IT HEREBY RESOLVED, by the Board of Commissioners of Saline County, NE,
that the sum of \$1,100.00 be transferred from the Inheritance Fund #2700 to the Juvenile
Services Aid Program Fund #2516, to be reimbursed when funds are available.

Motion made by Commissioner _____, seconded by Commissioner
_____, to adopt the foregoing Resolution. All members present
voting as follows:

Yeas: _____

Nays: _____

Abstentions: _____

Absent: _____

Chairman

SUBSCRIBED AND SWORN TO before me this 15th day of March, 2022

SEAL

Saline County Clerk

February 15, 2022

PLEASE POST

NOTICE OF PUBLIC HEARING

Notice is hereby given that the Board of County Commissioners of Saline County, Ne. will hold a public hearing on a proposed one (1) and six (6) year Highway Improvement Program for Saline County, at the Courthouse, Commissioners' Room, Wilber, Nebraska on the 15th, day of March, 2022, at 11:00 a.m.. The proposed program will be on file with the County Clerk and available for public inspection after February 7th, 2022.

By order of Chairman and
Board of Commissioners

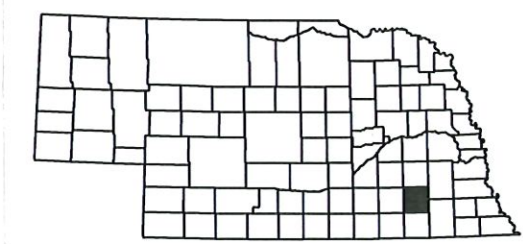
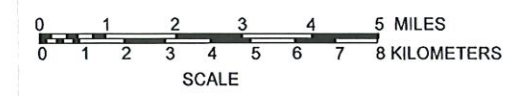
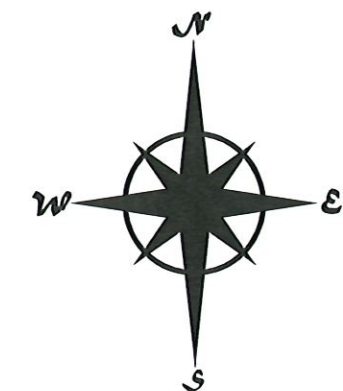
SALINE COUNTY NEBRASKA

NEBRASKA
Good Life. Great Journey.
DEPARTMENT OF TRANSPORTATION

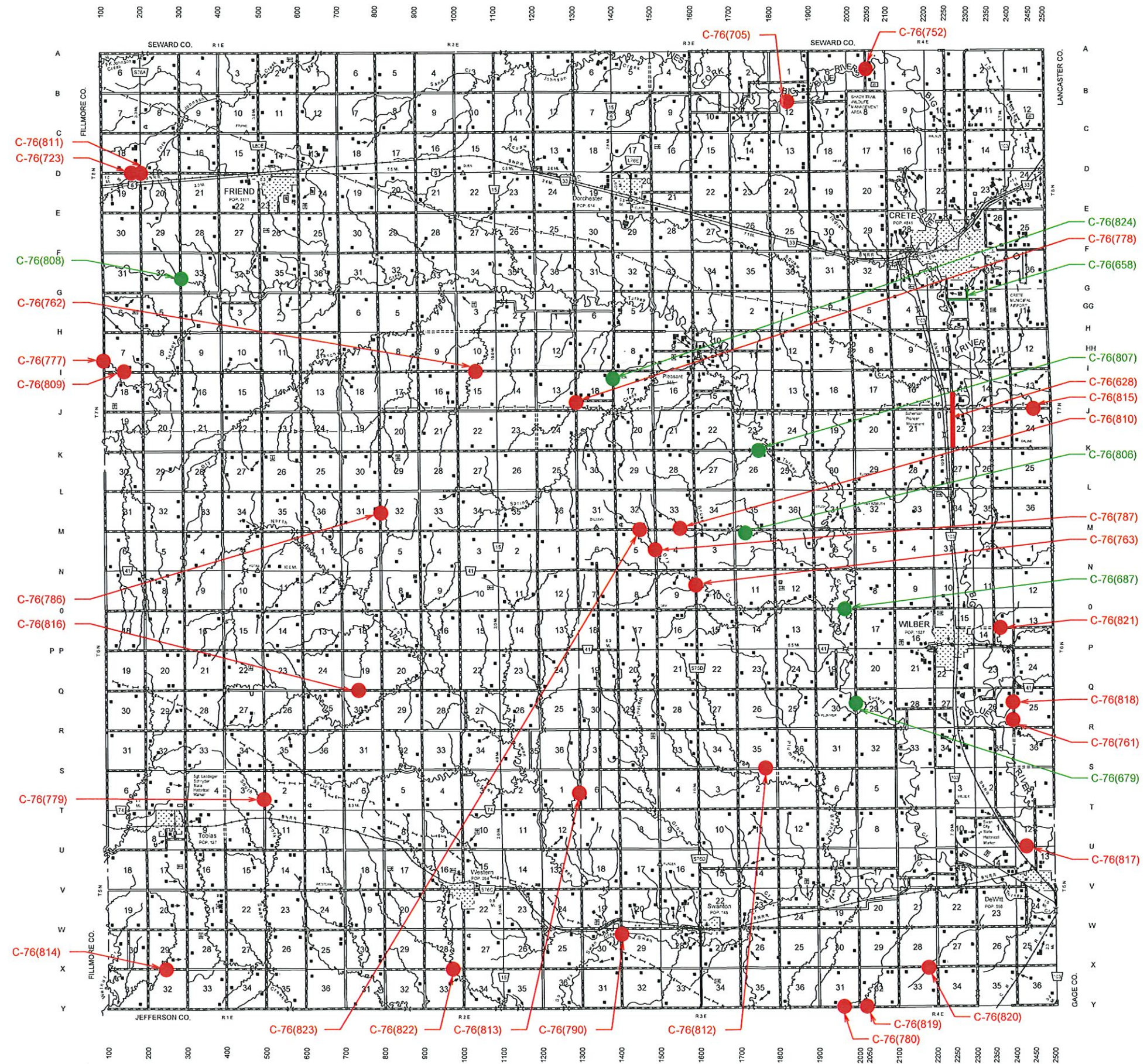


SALINE COUNTY ONE AND SIX YEAR PLAN 2022-2028

■ ONE YEAR
■ SIX YEAR



KEY TO COUNTIES



Board of Public Roads Classifications and Standards
Form 7 One- and Six-Year Plan
Highway or Street Improvement Project

County: Saline	City:	Village:
Location Description: Big Blue Precinct-Located in Center Section 15 & 22-T7N-R4E		
Existing Surface Type and Structures: (Such as dirt, gravel, asphalt, concrete, culvert, or bridge) Gravel		
Average Daily Traffic: 2004 = 70, 2024 = 75		Classification Type: (As shown on Functional Classification Map) Local
PROPOSED IMPROVEMENT		
Design Standard No.	Surfacing: RL-2 Gravel	Thickness: 2"
		Width: 28"
<input checked="" type="checkbox"/> Grading	<input type="checkbox"/> Concrete	<input type="checkbox"/> Erosion Control
<input checked="" type="checkbox"/> Aggregate	<input type="checkbox"/> Curb & Gutter	<input type="checkbox"/> Right of Way
<input type="checkbox"/> Armor Coat	<input type="checkbox"/> Drainage Structures	<input type="checkbox"/> Utility Adjustments
<input type="checkbox"/> Asphalt		<input type="checkbox"/> Fencing
		<input type="checkbox"/> Sidewalks
		<input type="checkbox"/> Lighting
Bridge to Remain in Place	Roadway Width:	Length: Type:
New Bridge	Roadway Width:	Length: Type:
Box Culvert	Span: Rise:	Length: Type:
Culvert	Diameter:	Length: Type:
<input type="checkbox"/> Yes <input checked="" type="checkbox"/> N/A - Bridges and Culverts Sized <input type="checkbox"/> Hydraulic Analysis Pending		
Other Construction Features: Pull up shoulders, Narrow back to 28'		
ESTIMATED COST (in Thousands)	H COUNTY	H CITY
H OPTIONAL	10	
		H STATE
		H FEDERAL
		H OTHER
		TOTAL
		10
Project Length: (Nearest Tenth, State Unit of Measure) 2.0 miles		Project No.: C-76 (628)
Signature: Bruce H. Filbin	Title: Saline County Highway Superintendent	Date: 2-3-2017

**Board of Public Roads Classifications and Standards
Form 7 One- and Six-Year Plan
Highway or Street Improvement Project**

County: Saline	City:	Village:
Location Description: Wilber Precinct-Located between Section 29 & 30-T6N-R4E		
Existing Surface Type and Structures: <i>(Such as dirt, gravel, asphalt, concrete, culvert, or bridge)</i> Gravel, 165' Steel truss Structure #C007613905		
Average Daily Traffic: 2007 = 40, 2017 = 45		Classification Type: <i>(As shown on Functional Classification Map)</i> Local
PROPOSED IMPROVEMENT		
Design Standard No.	Surfacing: RL-3 Gravel	Thickness: 2"
		Width: 28'
<input checked="" type="checkbox"/> Grading	<input type="checkbox"/> Concrete	<input checked="" type="checkbox"/> Erosion Control
<input checked="" type="checkbox"/> Aggregate	<input type="checkbox"/> Curb & Gutter	<input checked="" type="checkbox"/> Right of Way
<input type="checkbox"/> Armor Coat	<input checked="" type="checkbox"/> Drainage Structures	<input checked="" type="checkbox"/> Utility Adjustments
<input type="checkbox"/> Asphalt		<input type="checkbox"/> Fencing
		<input type="checkbox"/> Sidewalks
		<input type="checkbox"/> Lighting
Bridge to Remain in Place	Roadway Width:	Length: Type:
New Bridge	Roadway Width: 28'	Length: 160' Type: Girder
Box Culvert	Span: Rise:	Length: Type:
Culvert	Diameter:	Length: Type:
<input type="checkbox"/> Yes <input type="checkbox"/> N/A - Bridges and Culverts Sized <input checked="" type="checkbox"/> Hydraulic Analysis Pending		
Other Construction Features: NEW Bridge Approach grading & gravel surfacing		
ESTIMATED COST <i>(in Thousands)</i>	H COUNTY	H CITY
H OPTIONAL	600	
		H STATE
		H FEDERAL
		H OTHER
		TOTAL
		600
Project Length: <i>(Nearest Tenth, State Unit of Measure)</i> 0.2 miles		Project No.: C-76 (679)
Signature: <i>Bruce H Folger</i>	Title: Saline County Highway Superintendent	Date: 2-3-2017

Board of Public Roads Classifications and Standards
Form 7 One- and Six-Year Plan
Highway or Street Improvement Project

County: Saline	City:	Village:
Location Description: Wilber Precinct-Located between Section 7 - 18-T6N-R4E		
Existing Surface Type and Structures: <i>(Such as dirt, gravel, asphalt, concrete, culvert, or bridge)</i> Gravel, 125' Steel truss Structure #C007603025		
Average Daily Traffic: 2008 = 40, 2018 = 45		Classification Type: <i>(As shown on Functional Classification Map)</i> Local
PROPOSED IMPROVEMENT		
Design Standard No.	Surfacing: RL-3 Gravel	Thickness: 2" Width: 28"
<input checked="" type="checkbox"/> Grading <input checked="" type="checkbox"/> Aggregate <input type="checkbox"/> Armor Coat <input type="checkbox"/> Asphalt	<input type="checkbox"/> Concrete <input type="checkbox"/> Curb & Gutter <input checked="" type="checkbox"/> Drainage Structures	<input checked="" type="checkbox"/> Erosion Control <input checked="" type="checkbox"/> Right of Way <input checked="" type="checkbox"/> Utility Adjustments <input type="checkbox"/> Fencing <input type="checkbox"/> Sidewalks <input type="checkbox"/> Lighting
Bridge to Remain in Place	Roadway Width:	Length: Type:
New Bridge	Roadway Width: 28'	Length: 160' Type: Prestressed Inverted Tee
Box Culvert	Span: Rise: Length:	Type:
Culvert	Diameter: Length:	Type:
<input type="checkbox"/> Yes <input type="checkbox"/> N/A - Bridges and Culverts Sized <input checked="" type="checkbox"/> Hydraulic Analysis Pending		
Other Construction Features: NEW Bridge Approach grading & gravel surfacing		
ESTIMATED COST <i>(in Thousands)</i>	H COUNTY	H CITY
H OPTIONAL	600	
		H STATE
		H FEDERAL
		H OTHER
		TOTAL
		600
Project Length: <i>(Nearest Tenth, State Unit of Measure)</i> 0.2 miles		Project No.: C-76 (687)
Signature: <i>Bruce H Filippi</i>	Title: Saline County Highway Superintendent	Date: 2-3-2017

Board of Public Roads Classifications and Standards
Form 7 One- and Six-Year Plan
Highway or Street Improvement Project

County: Saline	City:	Village:
Location Description: Dorchester Precinct-Center Section 12-T8N-R3E		
Existing Surface Type and Structures: (Such as dirt, gravel, asphalt, concrete, culvert, or bridge) Dirt, 20' existing bridge		
Average Daily Traffic: 2011 = 15, 2021 = 20		Classification Type: (As shown on Functional Classification Map) Local
PROPOSED IMPROVEMENT		
Design Standard No.	Surfacing: RL-3 Dirt	Thickness: Width: 26'
<input checked="" type="checkbox"/> Grading <input checked="" type="checkbox"/> Aggregate <input type="checkbox"/> Armor Coat <input type="checkbox"/> Asphalt	<input type="checkbox"/> Concrete <input type="checkbox"/> Curb & Gutter <input checked="" type="checkbox"/> Drainage Structures	<input type="checkbox"/> Erosion Control <input type="checkbox"/> Right of Way <input type="checkbox"/> Utility Adjustments <input type="checkbox"/> Fencing <input type="checkbox"/> Sidewalks <input type="checkbox"/> Lighting
Bridge to Remain in Place	Roadway Width:	Length: Type:
New Bridge	Roadway Width:	Length: Type:
Box Culvert	Span: Rise: Length: Type:	
Culvert	Diameter: Triple 60"	Length: 60' Type: CMP
<input checked="" type="checkbox"/> Yes <input type="checkbox"/> N/A - Bridges and Culverts Sized <input type="checkbox"/> Hydraulic Analysis Pending		
Other Construction Features: Triple 60" CMP with Headwall, Approach grading		
ESTIMATED COST (in Thousands)	H COUNTY	H CITY
H OPTIONAL	23	
Project Length: (Nearest Tenth, State Unit of Measure) 0.1 miles		Project No.: C-76 (705)
Signature: Bruce H Filbin	Title: Saline County Highway Superintendent	Date: 2-3-2017

Board of Public Roads Classifications and Standards
Form 7 One- and Six-Year Plan
Highway or Street Improvement Project

County: Saline	City:	Village:
Location Description: Friend Precinct North side Section 19 T8N-R1E		
Existing Surface Type and Structures: <i>(Such as dirt, gravel, asphalt, concrete, culvert, or bridge)</i> Gravel, 16' Existing Timber bridge		
Average Daily Traffic: 2013 = 25, 2023 = 30		Classification Type: <i>(As shown on Functional Classification Map)</i> Local
PROPOSED IMPROVEMENT		
Design Standard No.	Surfacing: RL-3 Gravel	Thickness: 2"
		Width: 28'
<input checked="" type="checkbox"/> Grading	<input type="checkbox"/> Concrete	<input checked="" type="checkbox"/> Erosion Control
<input checked="" type="checkbox"/> Aggregate	<input type="checkbox"/> Curb & Gutter	<input checked="" type="checkbox"/> Right of Way
<input type="checkbox"/> Armor Coat	<input checked="" type="checkbox"/> Drainage Structures	<input type="checkbox"/> Utility Adjustments
<input type="checkbox"/> Asphalt		<input type="checkbox"/> Fencing
		<input type="checkbox"/> Sidewalks
		<input type="checkbox"/> Lighting
Bridge to Remain in Place	Roadway Width:	Length: Type:
New Bridge	Roadway Width:	Length: Type:
Box Culvert	Span: Triple 12'	Rise: 8'
		Length: 45'
		Type: CBC
Culvert	Diameter:	Length: Type:
<input checked="" type="checkbox"/> Yes <input type="checkbox"/> N/A - Bridges and Culverts Sized <input type="checkbox"/> Hydraulic Analysis Pending		
Other Construction Features: Approach Grading, CBC Gravel Surfacing		
ESTIMATED COST <i>(in Thousands)</i>	H COUNTY	H CITY
H OPTIONAL	180	
		H STATE
		H FEDERAL
		H OTHER
		TOTAL
		180
Project Length: <i>(Nearest Tenth, State Unit of Measure)</i> 0.1 miles		Project No.: C-76 (723)
Signature: <i>Bruce H. Fujii</i>		Title: Saline County Highway Superintendent
		Date: 2-3-2017

Board of Public Roads Classifications and Standards
Form 7 One- and Six-Year Plan
Highway or Street Improvement Project

County: Saline	City:	Village:				
Location Description: Crete Precinct Center of Section 5 T8N-R4E						
Existing Surface Type and Structures: (Such as dirt, gravel, asphalt, concrete, culvert, or bridge) Gravel, 287' Steel and Cement Truss C007603905P						
Average Daily Traffic: 2019 = 70, 2029 = 75		Classification Type: (As shown on Functional Classification Map) Local				
PROPOSED IMPROVEMENT						
Design Standard No.	Surfacing: RL-2 Gravel	Thickness: 2"	Width: 28'			
<input checked="" type="checkbox"/> Grading <input checked="" type="checkbox"/> Aggregate <input type="checkbox"/> Armor Coat <input type="checkbox"/> Asphalt	<input type="checkbox"/> Concrete <input type="checkbox"/> Curb & Gutter <input checked="" type="checkbox"/> Drainage Structures	<input checked="" type="checkbox"/> Erosion Control <input checked="" type="checkbox"/> Right of Way <input checked="" type="checkbox"/> Utility Adjustments	<input type="checkbox"/> Fencing <input type="checkbox"/> Sidewalks <input type="checkbox"/> Lighting			
Bridge to Remain in Place	Roadway Width:	Length:	Type:			
New Bridge	Roadway Width: 28'	Length: 315'	Type: Girder Bridge			
Box Culvert	Span:	Rise:	Length: Type:			
Culvert	Diameter:	Length:	Type:			
<input type="checkbox"/> Yes <input type="checkbox"/> N/A - Bridges and Culverts Sized <input checked="" type="checkbox"/> Hydraulic Analysis Pending						
Other Construction Features: Approach Grading, Gravel Surfacing, Multi-Span Girder Bridge BRO Funding						
ESTIMATED COST (in Thousands)	H COUNTY	H CITY	H STATE	H FEDERAL	H OTHER	TOTAL
H OPTIONAL	240			960		1200
Project Length: (Nearest Tenth, State Unit of Measure) 0.2 miles			Project No.: C-76 (752)			
Signature: Bruce H. Fajpi		Title: Saline County Highway Superintendent			Date:	

Board of Public Roads Classifications and Standards
Form 7 One- and Six-Year Plan
Highway or Street Improvement Project

County: Saline		City:		Village:		
Location Description: Wilber Precinct Between sections 25-26 T6N-R4E						
Existing Surface Type and Structures: <i>(Such as dirt, gravel, asphalt, concrete, culvert, or bridge)</i> Gravel, 50'x20' Existing Timber Bridge Bridge #C0076014705						
Average Daily Traffic: 2017 = 20, 2027 = 25			Classification Type: <i>(As shown on Functional Classification Map)</i> Local			
PROPOSED IMPROVEMENT						
Design Standard No.	Surfacing: RL3 Gravel	Thickness: 2"	Width: 28'			
<input checked="" type="checkbox"/> Grading	<input checked="" type="checkbox"/> Concrete	<input checked="" type="checkbox"/> Erosion Control	<input type="checkbox"/> Fencing			
<input checked="" type="checkbox"/> Aggregate	<input type="checkbox"/> Curb & Gutter	<input checked="" type="checkbox"/> Right of Way	<input type="checkbox"/> Sidewalks			
<input type="checkbox"/> Armor Coat	<input checked="" type="checkbox"/> Drainage Structures	<input type="checkbox"/> Utility Adjustments	<input type="checkbox"/> Lighting			
<input type="checkbox"/> Asphalt						
Bridge to Remain in Place	Roadway Width:	Length:	Type:			
New Bridge	Roadway Width:	Length:	Type:			
Box Culvert	Span: Triple 10'	Rise: 10'	Length: 60'	Type: CBC		
Culvert	Diameter:	Length:	Type:			
<input type="checkbox"/> Yes <input type="checkbox"/> N/A - Bridges and Culverts Sized <input type="checkbox"/> Hydraulic Analysis Pending						
Other Construction Features: Approach grading Triple 10'x10' CBC Gravel surfacing						
ESTIMATED COST <i>(in Thousands)</i>	H COUNTY	H CITY	H STATE	H FEDERAL	H OTHER	TOTAL
H OPTIONAL	99		121			220
Project Length: <i>(Nearest Tenth, State Unit of Measure)</i> 0.1 miles			Project No.: C-76 (761)			
Signature: <i>Bruce H Fujin</i>		Title: Saline County Highway Superintendent		Date: 1-29-21		

Board of Public Roads Classifications and Standards
Form 7 One- and Six-Year Plan
Highway or Street Improvement Project

County: Saline	City:	Village:
Location Description: Monroe Precinct Between sections 10-15 T7N-R2E		
Existing Surface Type and Structures: <i>(Such as dirt, gravel, asphalt, concrete, culvert, or bridge)</i> Gravel, 20'x20' Existing Bridge J-15-N-3		
Average Daily Traffic: 2017 = 45, 2027 = 50	Classification Type: <i>(As shown on Functional Classification Map)</i> Local	
PROPOSED IMPROVEMENT		
Design Standard No.	Surfacing: RL3 Gravel	Thickness: 2"
		Width: 28'
<input checked="" type="checkbox"/> Grading	<input type="checkbox"/> Concrete	<input checked="" type="checkbox"/> Erosion Control
<input checked="" type="checkbox"/> Aggregate	<input type="checkbox"/> Curb & Gutter	<input type="checkbox"/> Right of Way
<input type="checkbox"/> Armor Coat	<input checked="" type="checkbox"/> Drainage Structures	<input type="checkbox"/> Utility Adjustments
<input type="checkbox"/> Asphalt		<input type="checkbox"/> Fencing
		<input type="checkbox"/> Sidewalks
		<input type="checkbox"/> Lighting
Bridge to Remain in Place	Roadway Width:	Length:
		Type:
New Bridge	Roadway Width:	Length:
		Type:
Box Culvert	Span: Twin 12'	Rise: 6'
		Length: 60'
		Type: CBC
Culvert	Diameter:	Length:
		Type:
<input checked="" type="checkbox"/> Yes <input type="checkbox"/> N/A - Bridges and Culverts Sized <input type="checkbox"/> Hydraulic Analysis Pending		
Other Construction Features: Approach grading Twin 12'x6'x60' CBC Gravel surfacing		
ESTIMATED COST <i>(in Thousands)</i>	H COUNTY	H CITY
H OPTIONAL	150	
	H STATE	H FEDERAL
		H OTHER
		TOTAL
		150
Project Length: <i>(Nearest Tenth, State Unit of Measure)</i> 0.1 miles	Project No.: C-76 (762)	
Signature: <i>Bruce H. Pizzi</i>	Title: Saline County Highway Superintendent	Date: 2-3-2017

Board of Public Roads Classifications and Standards
Form 7 One- and Six-Year Plan
Highway or Street Improvement Project

County: Saline		City:		Village:		
Location Description: Brush Creek Precinct Located between sections 9-10 T6N-R3E						
Existing Surface Type and Structures: <i>(Such as dirt, gravel, asphalt, concrete, culvert, or bridge)</i> Gravel, 41' Existing Truss Bridge Bridge # C007613125						
Average Daily Traffic: 2018 = 100, 2028 = 110			Classification Type: <i>(As shown on Functional Classification Map)</i> RC2 Collector			
PROPOSED IMPROVEMENT						
Design Standard No.	Surfacing: RC 2 Gravel	Thickness: 2"	Width: 28'			
<input checked="" type="checkbox"/> Grading	<input type="checkbox"/> Concrete	<input checked="" type="checkbox"/> Erosion Control	<input type="checkbox"/> Fencing			
<input checked="" type="checkbox"/> Aggregate	<input type="checkbox"/> Curb & Gutter	<input checked="" type="checkbox"/> Right of Way	<input type="checkbox"/> Sidewalks			
<input type="checkbox"/> Armor Coat	<input checked="" type="checkbox"/> Drainage Structures	<input type="checkbox"/> Utility Adjustments	<input type="checkbox"/> Lighting			
<input type="checkbox"/> Asphalt						
Bridge to Remain in Place	Roadway Width:	Length:	Type:			
New Bridge	Roadway Width:	Length:	Type:			
Box Culvert	Span: Triple 10'	Rise: 12'	Length: 42'	Type: CBC		
Culvert	Diameter:	Length:	Type:			
<input checked="" type="checkbox"/> Yes <input type="checkbox"/> N/A - Bridges and Culverts Sized <input type="checkbox"/> Hydraulic Analysis Pending						
Other Construction Features: Approach Grading, Triple 10'x 12' x 42' CBC Gravel Surfacing						
ESTIMATED COST <i>(in Thousands)</i>	H COUNTY	H CITY	H STATE	H FEDERAL	H OTHER	TOTAL
H OPTIONAL	210					210
Project Length: <i>(Nearest Tenth, State Unit of Measure)</i> 0.1 miles			Project No.: C-76(763)			
Signature: <i>Bruce H Filipi</i>		Title: Saline County Highway Superintendent		Date: 2-9-2018		

Board of Public Roads Classifications and Standards
Form 7 One- and Six-Year Plan
Highway or Street Improvement Project

County: Saline	City:	Village:
Location Description: Turkey Creek Precinct West side section 7-T7N-R1E		
Existing Surface Type and Structures: <i>(Such as dirt, gravel, asphalt, concrete, culvert, or bridge)</i> Gravel, 48' Existing Timber Bridge Bridge #C007610105		
Average Daily Traffic: 2019 = 35, 2029 = 40		Classification Type: <i>(As shown on Functional Classification Map)</i> Local
PROPOSED IMPROVEMENT		
Design Standard No.	Surfacing: RL3 Gravel	Thickness: 2" Width: 28'
<input checked="" type="checkbox"/> Grading <input checked="" type="checkbox"/> Aggregate <input type="checkbox"/> Armor Coat <input type="checkbox"/> Asphalt	<input type="checkbox"/> Concrete <input type="checkbox"/> Curb & Gutter <input checked="" type="checkbox"/> Drainage Structures	<input checked="" type="checkbox"/> Erosion Control <input checked="" type="checkbox"/> Right of Way <input checked="" type="checkbox"/> Utility Adjustments <input type="checkbox"/> Fencing <input type="checkbox"/> Sidewalks <input type="checkbox"/> Lighting
Bridge to Remain in Place	Roadway Width:	Length: Type:
New Bridge	Roadway Width:	Length: Type:
Box Culvert	Span: Triple 12'	Rise: 12' Length: 42' Type: CBC
Culvert	Diameter:	Length: Type:
<input checked="" type="checkbox"/> Yes <input type="checkbox"/> N/A - Bridges and Culverts Sized <input type="checkbox"/> Hydraulic Analysis Pending		
Other Construction Features: Approach grading, CBC Gravel surfacing		
ESTIMATED COST <i>(in Thousands)</i>	H COUNTY	H CITY
H OPTIONAL	200	
		H STATE
		H FEDERAL
		H OTHER
		TOTAL
		200
Project Length: <i>(Nearest Tenth, State Unit of Measure)</i> 0.3 miles		Project No.: C-76 (777)
Signature: B. H. Filz	Title: Saline County Highway Superintendent	Date: 1-25-2019

Board of Public Roads Classifications and Standards
Form 7 One- and Six-Year Plan
Highway or Street Improvement Project

County: Saline		City:		Village:		
Location Description: Pleasant Hill Precinct West side section 18-T7N-R3E						
Existing Surface Type and Structures: (Such as dirt, gravel, asphalt, concrete, culvert, or bridge) Gravel, 32' Existing Timber Bridge Bridge #C007622520						
Average Daily Traffic: 2019 = 35, 2029 = 40			Classification Type: (As shown on Functional Classification Map) Local			
PROPOSED IMPROVEMENT						
Design Standard No.	Surfacing: RL3 Gravel	Thickness: 2"	Width: 28'			
<input checked="" type="checkbox"/> Grading	<input type="checkbox"/> Concrete	<input checked="" type="checkbox"/> Erosion Control	<input type="checkbox"/> Fencing			
<input checked="" type="checkbox"/> Aggregate	<input type="checkbox"/> Curb & Gutter	<input type="checkbox"/> Right of Way	<input type="checkbox"/> Sidewalks			
<input type="checkbox"/> Armor Coat	<input checked="" type="checkbox"/> Drainage Structures	<input type="checkbox"/> Utility Adjustments	<input type="checkbox"/> Lighting			
<input type="checkbox"/> Asphalt						
Bridge to Remain in Place	Roadway Width:	Length:	Type:			
New Bridge	Roadway Width:	Length:	Type:			
Box Culvert	Span: Triple 10'	Rise: 6'	Length: 42'	Type: CBC		
Culvert	Diameter:	Length:	Type:			
<input checked="" type="checkbox"/> Yes <input type="checkbox"/> N/A - Bridges and Culverts Sized <input type="checkbox"/> Hydraulic Analysis Pending						
Other Construction Features: Approach grading, CBC Gravel surfacing						
ESTIMATED COST (in Thousands)	H COUNTY	H CITY	H STATE	H FEDERAL	H OTHER	TOTAL
H OPTIONAL	140					140
Project Length: (Nearest Tenth, State Unit of Measure) 0.3 miles			Project No.: C-76 (778)			
Signature: <i>Bruce H Filpi</i>		Title: Saline County Highway Superintendent		Date: 1-25-2019		

Board of Public Roads Classifications and Standards
Form 7 One- and Six-Year Plan
Highway or Street Improvement Project

County: Saline	City:	Village:
Location Description: Olive Precinct Located between sections 2-3 T5N-R1E		
Existing Surface Type and Structures: <i>(Such as dirt, gravel, asphalt, concrete, culvert, or bridge)</i> Gravel, 12' Existing Timber Bridge		
Average Daily Traffic: 2019 = 30, 2029 = 35		Classification Type: <i>(As shown on Functional Classification Map)</i> Local
PROPOSED IMPROVEMENT		
Design Standard No.	Surfacing: RL3 Gravel	Thickness: 2"
		Width: 28'
<input checked="" type="checkbox"/> Grading	<input type="checkbox"/> Concrete	<input checked="" type="checkbox"/> Erosion Control
<input checked="" type="checkbox"/> Aggregate	<input type="checkbox"/> Curb & Gutter	<input type="checkbox"/> Right of Way
<input type="checkbox"/> Armor Coat	<input checked="" type="checkbox"/> Drainage Structures	<input type="checkbox"/> Utility Adjustments
<input type="checkbox"/> Asphalt		<input type="checkbox"/> Fencing
		<input type="checkbox"/> Sidewalks
		<input type="checkbox"/> Lighting
Bridge to Remain in Place	Roadway Width:	Length: Type:
New Bridge	Roadway Width:	Length: Type:
Box Culvert	Span: Rise: Length: Type:	
Culvert	Diameter: Triple 60" RE	Length: 38' Type: CMP
<input checked="" type="checkbox"/> Yes <input type="checkbox"/> N/A - Bridges and Culverts Sized <input type="checkbox"/> Hydraulic Analysis Pending		
Other Construction Features: Approach Grading, Triple 60" x 38' RE CMP with headwalls Gravel Surfacing		
ESTIMATED COST <i>(in Thousands)</i>	H COUNTY	H CITY
H OPTIONAL	35	
		H STATE
		H FEDERAL
		H OTHER
		TOTAL
		35
Project Length: <i>(Nearest Tenth, State Unit of Measure)</i> 0.2 miles		Project No.: C-76(779)
Signature: Bruce H. Kalyzi	Title: Saline County Highway Superintendent	Date: 1-25-2019

Board of Public Roads Classifications and Standards
Form 7 One- and Six-Year Plan
Highway or Street Improvement Project

County: Saline	City:	Village:
Location Description: DeWitt Precinct Southside Section 31 T5N-R4E		
Existing Surface Type and Structures: <i>(Such as dirt, gravel, asphalt, concrete, culvert, or bridge)</i> Gravel, 16' Existing Timber Bridge		
Average Daily Traffic: 2019 = 40, 2029 = 45		Classification Type: <i>(As shown on Functional Classification Map)</i> Local
PROPOSED IMPROVEMENT		
Design Standard No.	Surfacing: RL3 Gravel	Thickness: 2" Width: 28'
<input checked="" type="checkbox"/> Grading <input checked="" type="checkbox"/> Aggregate <input type="checkbox"/> Armor Coat <input type="checkbox"/> Asphalt	<input type="checkbox"/> Concrete <input type="checkbox"/> Curb & Gutter <input checked="" type="checkbox"/> Drainage Structures	<input checked="" type="checkbox"/> Erosion Control <input type="checkbox"/> Right of Way <input type="checkbox"/> Utility Adjustments <input type="checkbox"/> Fencing <input type="checkbox"/> Sidewalks <input type="checkbox"/> Lighting
Bridge to Remain in Place	Roadway Width:	Length: Type:
New Bridge	Roadway Width:	Length: Type:
Box Culvert	Span: Rise:	Length: Type:
Culvert	Diameter: Triple 60" RE	Length: 34' Type: CMP
<input checked="" type="checkbox"/> Yes <input type="checkbox"/> N/A - Bridges and Culverts Sized <input type="checkbox"/> Hydraulic Analysis Pending		
Other Construction Features: Approach Grading, Triple 60" x 34' RE CMP with headwalls Gravel Surfacing		
ESTIMATED COST <i>(in Thousands)</i>	H COUNTY	H CITY
H OPTIONAL	33	
		H STATE
		H FEDERAL
		H OTHER
		TOTAL
		33
Project Length: <i>(Nearest Tenth, State Unit of Measure)</i> 0.1 miles		Project No.: C-76(780)
Signature: <i>Bruce H. Fajri</i>	Title: Saline County Highway Superintendent	Date: 1-25-2019

Board of Public Roads Classifications and Standards
Form 7 One- and Six-Year Plan
Highway or Street Improvement Project

County: Saline	City:	Village:
Location Description: Monroe Precinct Located between sections 31-32 T7N-R2E		
Existing Surface Type and Structures: <i>(Such as dirt, gravel, asphalt, concrete, culvert, or bridge)</i> Gravel, 16' Existing Timber Bridge		
Average Daily Traffic: 2019 = 20, 2029 = 25		Classification Type: <i>(As shown on Functional Classification Map)</i> Local
PROPOSED IMPROVEMENT		
Design Standard No.	Surfacing: RL3 Gravel	Thickness: 2"
		Width: 28'
<input checked="" type="checkbox"/> Grading	<input type="checkbox"/> Concrete	<input checked="" type="checkbox"/> Erosion Control
<input checked="" type="checkbox"/> Aggregate	<input type="checkbox"/> Curb & Gutter	<input type="checkbox"/> Right of Way
<input type="checkbox"/> Armor Coat	<input checked="" type="checkbox"/> Drainage Structures	<input type="checkbox"/> Utility Adjustments
<input type="checkbox"/> Asphalt		<input type="checkbox"/> Fencing
		<input type="checkbox"/> Sidewalks
		<input type="checkbox"/> Lighting
Bridge to Remain in Place	Roadway Width:	Length: Type:
New Bridge	Roadway Width:	Length: Type:
Box Culvert	Span: Rise: Length: Type:	
Culvert	Diameter: Triple 72"	Length: 40' Type: CMP
<input checked="" type="checkbox"/> Yes <input type="checkbox"/> N/A - Bridges and Culverts Sized <input type="checkbox"/> Hydraulic Analysis Pending		
Other Construction Features: Approach Grading, Triple 72" x 40' CMP with headwalls Gravel Surfacing		
ESTIMATED COST <i>(in Thousands)</i>	H COUNTY	H CITY
H OPTIONAL	45	
		H STATE
		H FEDERAL
		H OTHER
		TOTAL
		45
Project Length: <i>(Nearest Tenth, State Unit of Measure)</i> 0.1 miles		Project No.: C-76(786)
Signature: Bruce H. Filippi	Title: Saline County Highway Superintendent	Date: 1-25-2019

Board of Public Roads Classifications and Standards
Form 7 One- and Six-Year Plan
Highway or Street Improvement Project

County: Saline	City:	Village:
Location Description: Brush Creek Precinct Located between sections 4-5 T6N-R3E		
Existing Surface Type and Structures: <i>(Such as dirt, gravel, asphalt, concrete, culvert, or bridge)</i> Dirt, 20' Existing Timber Bridge		
Average Daily Traffic: 2019 = 15, 2029 = 20		Classification Type: <i>(As shown on Functional Classification Map)</i> Local
PROPOSED IMPROVEMENT		
Design Standard No.	Surfacing: RL3 Dirtl	Thickness: Width: 28'
<input checked="" type="checkbox"/> Grading <input type="checkbox"/> Aggregate <input type="checkbox"/> Armor Coat <input type="checkbox"/> Asphalt	<input type="checkbox"/> Concrete <input type="checkbox"/> Curb & Gutter <input checked="" type="checkbox"/> Drainage Structures	<input checked="" type="checkbox"/> Erosion Control <input type="checkbox"/> Right of Way <input type="checkbox"/> Utility Adjustments <input type="checkbox"/> Fencing <input type="checkbox"/> Sidewalks <input type="checkbox"/> Lighting
Bridge to Remain in Place	Roadway Width:	Length: Type:
New Bridge	Roadway Width:	Length: Type:
Box Culvert	Span: Rise: Length: Type:	
Culvert	Diameter: Triple 84"	Length: 40' Type: CMP
<input checked="" type="checkbox"/> Yes <input type="checkbox"/> N/A - Bridges and Culverts Sized <input type="checkbox"/> Hydraulic Analysis Pending		
Other Construction Features: Approach Grading, Triple 84" x 40' CMP with headwalls		
ESTIMATED COST <i>(in Thousands)</i>	H COUNTY	H CITY
H OPTIONAL	45	
		H STATE
		H FEDERAL
		H OTHER
		TOTAL
		45
Project Length: <i>(Nearest Tenth, State Unit of Measure)</i> 0.1 miles		Project No.: C-76(787)
Signature: Bonne H Filipi	Title: Saline County Highway Superintendent	Date: 1-25-2019

Board of Public Roads Classifications and Standards
Form 7 One- and Six-Year Plan
Highway or Street Improvement Project

County: Saline	City:	Village:
Location Description: Swan Creek Precinct Located between sections 29-30 T5N-R3E		
Existing Surface Type and Structures: (Such as dirt, gravel, asphalt, concrete, culvert, or bridge) Gravel, 90' Existing Steel and Concrete Bridge C007602710		
Average Daily Traffic: 2019 = 40, 2029 = 45		Classification Type: (As shown on Functional Classification Map) Local
PROPOSED IMPROVEMENT		
Design Standard No.	Surfacing: RL3 Gravel	Thickness: 2"
		Width: 28'
<input checked="" type="checkbox"/> Grading	<input type="checkbox"/> Concrete	<input checked="" type="checkbox"/> Erosion Control
<input checked="" type="checkbox"/> Aggregate	<input type="checkbox"/> Curb & Gutter	<input checked="" type="checkbox"/> Right of Way
<input type="checkbox"/> Armor Coat	<input checked="" type="checkbox"/> Drainage Structures	<input type="checkbox"/> Utility Adjustments
<input type="checkbox"/> Asphalt		<input type="checkbox"/> Fencing
		<input type="checkbox"/> Sidewalks
		<input type="checkbox"/> Lighting
Bridge to Remain in Place	Roadway Width:	Length:
		Type:
New Bridge	Roadway Width: 28'	Length: 90'
		Type: Deck Slab
Box Culvert	Span:	Rise:
		Length:
		Type:
Culvert	Diameter:	Length:
		Type:
<input checked="" type="checkbox"/> Yes <input type="checkbox"/> N/A - Bridges and Culverts Sized <input type="checkbox"/> Hydraulic Analysis Pending		
Other Construction Features: Grading, Gravel surfacing, multi-span deck slab bridge		
ESTIMATED COST (in Thousands)	H COUNTY	H CITY
H OPTIONAL	600	
	H STATE	H FEDERAL
		H OTHER
		TOTAL
		600
Project Length: (Nearest Tenth, State Unit of Measure) 0.3 miles		Project No.: C-76(790)
Signature: Bruce H Filippi	Title: Saline County Highway Superintendent	Date: 1-25-2019

Board of Public Roads Classifications and Standards
Form 7 One- and Six-Year Plan
Highway or Street Improvement Project

County: Saline	City:	Village:
Location Description: Brush Creek Precinct Located North Side Section 2 T6N-R3E		
Existing Surface Type and Structures: (Such as dirt, gravel, asphalt, concrete, culvert, or bridge) Gravel, 24' Existing Steel Bridge Bridge # C007602625		
Average Daily Traffic: 2020 = 40, 2030 = 45		Classification Type: (As shown on Functional Classification Map) Local
PROPOSED IMPROVEMENT		
Design Standard No.	Surfacing: Gravel	Thickness: 2" Width: 28'
<input checked="" type="checkbox"/> Grading <input checked="" type="checkbox"/> Aggregate <input type="checkbox"/> Armor Coat <input type="checkbox"/> Asphalt	<input type="checkbox"/> Concrete <input type="checkbox"/> Curb & Gutter <input checked="" type="checkbox"/> Drainage Structures	<input checked="" type="checkbox"/> Erosion Control <input checked="" type="checkbox"/> Right of Way <input checked="" type="checkbox"/> Utility Adjustments <input type="checkbox"/> Fencing <input type="checkbox"/> Sidewalks <input type="checkbox"/> Lighting
Bridge to Remain in Place	Roadway Width:	Length: Type:
New Bridge	Roadway Width:	Length: Type:
Box Culvert	Span: Triple 12'	Rise: 5' Length: 48' Type: CBC
Culvert	Diameter:	Length: Type:
<input checked="" type="checkbox"/> Yes <input type="checkbox"/> N/A - Bridges and Culverts Sized <input type="checkbox"/> Hydraulic Analysis Pending		
Other Construction Features: Approach Grading, CBC Gravel Surfacing		
ESTIMATED COST (in Thousands)	H COUNTY	H CITY
H OPTIONAL	180	
		H STATE
		H FEDERAL
		H OTHER
		TOTAL
		180
Project Length: (Nearest Tenth, State Unit of Measure) 0.2 miles		Project No.: C-76(806)
Signature: Bruce H Filippi	Title: Saline County Highway Superintendent	Date: 1-29-2020

Board of Public Roads Classifications and Standards
Form 7 One- and Six-Year Plan
Highway or Street Improvement Project

County: Saline	City:	Village:
Location Description: Pleasant Hill Precinct Located between Sections 23-26 T7N-R3E		
Existing Surface Type and Structures: <i>(Such as dirt, gravel, asphalt, concrete, culvert, or bridge)</i> Gravel, 32' Existing Timber Bridge Bridge # C007602225		
Average Daily Traffic: 2020 = 40, 2030 = 45		Classification Type: <i>(As shown on Functional Classification Map)</i> Local
PROPOSED IMPROVEMENT		
Design Standard No.	Surfacing: Gravel	Thickness: 2" Width: 28'
<input checked="" type="checkbox"/> Grading <input checked="" type="checkbox"/> Aggregate <input type="checkbox"/> Armor Coat <input type="checkbox"/> Asphalt	<input type="checkbox"/> Concrete <input type="checkbox"/> Curb & Gutter <input checked="" type="checkbox"/> Drainage Structures	<input checked="" type="checkbox"/> Erosion Control <input checked="" type="checkbox"/> Right of Way <input checked="" type="checkbox"/> Utility Adjustments <input type="checkbox"/> Fencing <input type="checkbox"/> Sidewalks <input type="checkbox"/> Lighting
Bridge to Remain in Place	Roadway Width:	Length: Type:
New Bridge	Roadway Width:	Length: Type:
Box Culvert	Span: Twin 14'	Rise: 8' Length: 42' Type: CBC
Culvert	Diameter:	Length: Type:
<input checked="" type="checkbox"/> Yes <input type="checkbox"/> N/A - Bridges and Culverts Sized <input type="checkbox"/> Hydraulic Analysis Pending		
Other Construction Features: Approach Grading, CBC Gravel Surfacing		
ESTIMATED COST <i>(in Thousands)</i>	H COUNTY	H CITY
H OPTIONAL	200	
		H STATE
		H FEDERAL
		H OTHER
		TOTAL
		200
Project Length: <i>(Nearest Tenth, State Unit of Measure)</i> 0.1 miles		Project No.: C-76(807)
Signature: Bruce H. Felton	Title: Saline County Highway Superintendent	Date: 1-29-2020

Board of Public Roads Classifications and Standards
Form 7 One- and Six-Year Plan
Highway or Street Improvement Project

County: Saline	City:	Village:
Location Description: Friend Precinct Located between Sections 32-33 T8N-R1E		
Existing Surface Type and Structures: <i>(Such as dirt, gravel, asphalt, concrete, culvert, or bridge)</i> Gravel, 32' Existing Timber Bridge Bridge # C007600515		
Average Daily Traffic: 2020 = 40, 2030 = 45		Classification Type: <i>(As shown on Functional Classification Map)</i> Local
PROPOSED IMPROVEMENT		
Design Standard No.	Surfacing: Gravel	Thickness: 2"
		Width: 28'
<input checked="" type="checkbox"/> Grading	<input type="checkbox"/> Concrete	<input checked="" type="checkbox"/> Erosion Control
<input checked="" type="checkbox"/> Aggregate	<input type="checkbox"/> Curb & Gutter	<input checked="" type="checkbox"/> Right of Way
<input type="checkbox"/> Armor Coat	<input checked="" type="checkbox"/> Drainage Structures	<input checked="" type="checkbox"/> Utility Adjustments
<input type="checkbox"/> Asphalt		<input type="checkbox"/> Fencing
		<input type="checkbox"/> Sidewalks
		<input type="checkbox"/> Lighting
Bridge to Remain in Place	Roadway Width:	Length: Type:
New Bridge	Roadway Width:	Length: Type:
Box Culvert	Span: Twin 12'	Rise: 10' Length: 45' Type: CBC
Culvert	Diameter:	Length: Type:
<input checked="" type="checkbox"/> Yes <input type="checkbox"/> N/A - Bridges and Culverts Sized <input type="checkbox"/> Hydraulic Analysis Pending		
Other Construction Features: Approach Grading, CBC Gravel Surfacing		
ESTIMATED COST <i>(in Thousands)</i>	H COUNTY	H CITY
H OPTIONAL	200	
	H STATE	H FEDERAL
		H OTHER
		TOTAL
		200
Project Length: <i>(Nearest Tenth, State Unit of Measure)</i> 0.1 miles		Project No.: C-76(808)
Signature: <i>Bruce H Filippi</i>	Title: Saline County Highway Superintendent	Date: 1-29-2020

Board of Public Roads Classifications and Standards
Form 7 One- and Six-Year Plan
Highway or Street Improvement Project

County: Saline		City:		Village:		
Location Description: Turkey Creek Precinct Located between Sections 7-18 T7N-R1E						
Existing Surface Type and Structures: (Such as dirt, gravel, asphalt, concrete, culvert, or bridge) Gravel, 32' Existing Timber Bridge Bridge # C007601803						
Average Daily Traffic: 2020 = 30, 2030 = 35			Classification Type: (As shown on Functional Classification Map) Local			
PROPOSED IMPROVEMENT						
Design Standard No.	Surfacing: Gravel	Thickness: 2"	Width: 28'			
<input checked="" type="checkbox"/> Grading	<input type="checkbox"/> Concrete	<input checked="" type="checkbox"/> Erosion Control	<input type="checkbox"/> Fencing			
<input checked="" type="checkbox"/> Aggregate	<input type="checkbox"/> Curb & Gutter	<input checked="" type="checkbox"/> Right of Way	<input type="checkbox"/> Sidewalks			
<input type="checkbox"/> Armor Coat	<input checked="" type="checkbox"/> Drainage Structures	<input checked="" type="checkbox"/> Utility Adjustments	<input type="checkbox"/> Lighting			
<input type="checkbox"/> Asphalt						
Bridge to Remain in Place	Roadway Width:	Length:	Type:			
New Bridge	Roadway Width:	Length:	Type:			
Box Culvert	Span: Triple 14'	Rise: 8'	Length: 45'	Type: CBC		
Culvert	Diameter:	Length:	Type:			
<input checked="" type="checkbox"/> Yes <input type="checkbox"/> N/A - Bridges and Culverts Sized <input type="checkbox"/> Hydraulic Analysis Pending						
Other Construction Features: Approach Grading, CBC Gravel Surfacing						
ESTIMATED COST (in Thousands)	H COUNTY	H CITY	H STATE	H FEDERAL	H OTHER	TOTAL
H OPTIONAL	225					225
Project Length: (Nearest Tenth, State Unit of Measure) 0.1 miles			Project No.: C-76(809)			
Signature: <i>Bruce H Filipi</i>		Title: Saline County Highway Superintendent		Date: 1-29-2020		

Board of Public Roads Classifications and Standards
Form 7 One- and Six-Year Plan
Highway or Street Improvement Project

County: Saline	City:	Village:
Location Description: Brush Creek Precinct North Side Section 4 T6N-R3E		
Existing Surface Type and Structures: <i>(Such as dirt, gravel, asphalt, concrete, culvert, or bridge)</i> Gravel 20' Existing Timber Bridge		
Average Daily Traffic: 2021 = 35, 2031 = 40		Classification Type: <i>(As shown on Functional Classification Map)</i> Local
PROPOSED IMPROVEMENT		
Design Standard No.	Surfacing: Gravel	Thickness: 2" Width: 28'
<input checked="" type="checkbox"/> Grading <input checked="" type="checkbox"/> Aggregate <input type="checkbox"/> Armor Coat <input type="checkbox"/> Asphalt	<input type="checkbox"/> Concrete <input type="checkbox"/> Curb & Gutter <input checked="" type="checkbox"/> Drainage Structures	<input checked="" type="checkbox"/> Erosion Control <input type="checkbox"/> Right of Way <input checked="" type="checkbox"/> Utility Adjustments <input type="checkbox"/> Fencing <input type="checkbox"/> Sidewalks <input type="checkbox"/> Lighting
Bridge to Remain in Place	Roadway Width:	Length: Type:
New Bridge	Roadway Width:	Length: Type:
Box Culvert	Span: Rise: Length: Type:	
Culvert	Diameter: Triple 72"	Length: 36' Type: CMP
<input checked="" type="checkbox"/> Yes <input type="checkbox"/> N/A - Bridges and Culverts Sized <input type="checkbox"/> Hydraulic Analysis Pending		
Other Construction Features: Approach Grading, Triple 72"x36' CMP with Headwalls Gravel Surfacing		
ESTIMATED COST <i>(in Thousands)</i>	H COUNTY	H CITY
H OPTIONAL	40	
Project Length: <i>(Nearest Tenth, State Unit of Measure)</i> 0.1 miles		Project No.: C-76(810)
Signature: Bruce H. Filipi	Title: Saline County Highway Superintendent	Date: 1-26-2021

Board of Public Roads Classifications and Standards
Form 7 One- and Six-Year Plan
Highway or Street Improvement Project

County: Saline		City:		Village:		
Location Description: Friend Precinct Located Between Sections 18-19 T8N-R1E						
Existing Surface Type and Structures: (Such as dirt, gravel, asphalt, concrete, culvert, or bridge) Gravel 12' Existing Timber Bridge						
Average Daily Traffic: 2021 = 25, 2031 = 30			Classification Type: (As shown on Functional Classification Map) Local			
PROPOSED IMPROVEMENT						
Design Standard No.	Surfacing: Gravel	Thickness: 2"	Width: 28'			
<input checked="" type="checkbox"/> Grading	<input type="checkbox"/> Concrete	<input checked="" type="checkbox"/> Erosion Control	<input type="checkbox"/> Fencing			
<input checked="" type="checkbox"/> Aggregate	<input type="checkbox"/> Curb & Gutter	<input type="checkbox"/> Right of Way	<input type="checkbox"/> Sidewalks			
<input type="checkbox"/> Armor Coat	<input checked="" type="checkbox"/> Drainage Structures	<input checked="" type="checkbox"/> Utility Adjustments	<input type="checkbox"/> Lighting			
<input type="checkbox"/> Asphalt						
Bridge to Remain in Place	Roadway Width:	Length:	Type:			
New Bridge	Roadway Width:	Length:	Type:			
Box Culvert	Span:	Rise:	Length:	Type:		
Culvert	Diameter: 60"	Length: 36'	Type: CMP			
<input checked="" type="checkbox"/> Yes <input type="checkbox"/> N/A - Bridges and Culverts Sized <input type="checkbox"/> Hydraulic Analysis Pending						
Other Construction Features: Approach Grading, 60"x36' CMP with Headwalls Gravel Surfacing						
ESTIMATED COST (in Thousands)	H COUNTY	H CITY	H STATE	H FEDERAL	H OTHER	TOTAL
H OPTIONAL	15					15
Project Length: (Nearest Tenth, State Unit of Measure) 0.1 miles			Project No.: C-76(811)			
Signature: <i>Bruce H. Filippi</i>		Title: Saline County Highway Superintendent		Date: 1-26-2021		

Board of Public Roads Classifications and Standards
Form 7 One- and Six-Year Plan
Highway or Street Improvement Project

County: Saline		City:		Village:		
Location Description: Swn Creek Precinct Located Between Sections 25-36 T5N-R3E						
Existing Surface Type and Structures: (Such as dirt, gravel, asphalt, concrete, culvert, or bridge) Gravel 16' Existing Timber Bridge						
Average Daily Traffic: 2021 = 20, 2031 = 25			Classification Type: (As shown on Functional Classification Map) Local			
PROPOSED IMPROVEMENT						
Design Standard No.	Surfacing: Gravel	Thickness: 2"	Width: 28'			
<input checked="" type="checkbox"/> Grading	<input type="checkbox"/> Concrete	<input checked="" type="checkbox"/> Erosion Control	<input type="checkbox"/> Fencing			
<input checked="" type="checkbox"/> Aggregate	<input type="checkbox"/> Curb & Gutter	<input type="checkbox"/> Right of Way	<input type="checkbox"/> Sidewalks			
<input type="checkbox"/> Armor Coat	<input checked="" type="checkbox"/> Drainage Structures	<input checked="" type="checkbox"/> Utility Adjustments	<input type="checkbox"/> Lighting			
<input type="checkbox"/> Asphalt						
Bridge to Remain in Place	Roadway Width:	Length:	Type:			
New Bridge	Roadway Width:	Length:	Type:			
Box Culvert	Span:	Rise:	Length:	Type:		
Culvert	Diameter: Twin 66"	Length: 40'	Type: CMP			
<input checked="" type="checkbox"/> Yes <input type="checkbox"/> N/A - Bridges and Culverts Sized <input type="checkbox"/> Hydraulic Analysis Pending						
Other Construction Features: Approach Grading, 66"x40' CMP with Headwalls Gravel Surfacing						
ESTIMATED COST (in Thousands)	H COUNTY	H CITY	H STATE	H FEDERAL	H OTHER	TOTAL
H OPTIONAL	30					30
Project Length: (Nearest Tenth, State Unit of Measure) 0.1 miles			Project No.: C-76(812)			
Signature: <i>Bruce H. Filipi</i>		Title: Saline County Highway Superintendent		Date: 1-26-2021		

Board of Public Roads Classifications and Standards
Form 7 One- and Six-Year Plan
Highway or Street Improvement Project

County: Saline		City:		Village:		
Location Description: Swan Creek Precinct West Side Section 6 T5N-R3E						
Existing Surface Type and Structures: <i>(Such as dirt, gravel, asphalt, concrete, culvert, or bridge)</i> Gravel 16' Existing Timber Bridge						
Average Daily Traffic: 2021 = 20, 2031 = 25			Classification Type: <i>(As shown on Functional Classification Map)</i> Local			
PROPOSED IMPROVEMENT						
Design Standard No.	Surfacing: Gravel	Thickness: 2"	Width: 28'			
<input checked="" type="checkbox"/> Grading	<input type="checkbox"/> Concrete	<input checked="" type="checkbox"/> Erosion Control	<input type="checkbox"/> Fencing			
<input checked="" type="checkbox"/> Aggregate	<input type="checkbox"/> Curb & Gutter	<input type="checkbox"/> Right of Way	<input type="checkbox"/> Sidewalks			
<input type="checkbox"/> Armor Coat	<input checked="" type="checkbox"/> Drainage Structures	<input checked="" type="checkbox"/> Utility Adjustments	<input type="checkbox"/> Lighting			
<input type="checkbox"/> Asphalt						
Bridge to Remain in Place	Roadway Width:	Length:	Type:			
New Bridge	Roadway Width:	Length:	Type:			
Box Culvert	Span:	Rise:	Length:	Type:		
Culvert	Diameter: Triple 72"	Length: 34'	Type: CMP			
<input checked="" type="checkbox"/> Yes <input type="checkbox"/> N/A - Bridges and Culverts Sized <input type="checkbox"/> Hydraulic Analysis Pending						
Other Construction Features: Approach Grading, Triple 72" x 34' CMP with Headwalls Gravel Surfacing						
ESTIMATED COST <i>(in Thousands)</i>	H COUNTY	H CITY	H STATE	H FEDERAL	H OTHER	TOTAL
H OPTIONAL	40					40
Project Length: <i>(Nearest Tenth, State Unit of Measure)</i> 0.1 miles			Project No.: C-76(813)			
Signature: <i>Bruce H Filpi</i>		Title: Saline County Highway Superintendent		Date: 1-26-2021		

Board of Public Roads Classifications and Standards
Form 7 One- and Six-Year Plan
Highway or Street Improvement Project

County: Saline		City:		Village:		
Location Description: Olive Precinct Located Between Sections 29-32 T5N-R1E						
Existing Surface Type and Structures: <i>(Such as dirt, gravel, asphalt, concrete, culvert, or bridge)</i> Dirt 16' Existing Timber Bridge						
Average Daily Traffic: 2021 = 15, 2031 = 20			Classification Type: <i>(As shown on Functional Classification Map)</i> Local			
PROPOSED IMPROVEMENT						
Design Standard No.	Surfacing: Dirt	Thickness:	Width: 28'			
<input checked="" type="checkbox"/> Grading	<input type="checkbox"/> Concrete	<input checked="" type="checkbox"/> Erosion Control	<input type="checkbox"/> Fencing			
<input type="checkbox"/> Aggregate	<input type="checkbox"/> Curb & Gutter	<input type="checkbox"/> Right of Way	<input type="checkbox"/> Sidewalks			
<input type="checkbox"/> Armor Coat	<input checked="" type="checkbox"/> Drainage Structures	<input type="checkbox"/> Utility Adjustments	<input type="checkbox"/> Lighting			
<input type="checkbox"/> Asphalt						
Bridge to Remain in Place	Roadway Width:	Length:	Type:			
New Bridge	Roadway Width:	Length:	Type:			
Box Culvert	Span:	Rise:	Length:	Type:		
Culvert	Diameter: Triple 72"	Length: 34'	Type: CMP			
<input checked="" type="checkbox"/> Yes <input type="checkbox"/> N/A - Bridges and Culverts Sized <input type="checkbox"/> Hydraulic Analysis Pending						
Other Construction Features: Approach Grading, Triple 72"x34' CMP with Headwalls Gravel Surfacing						
ESTIMATED COST <i>(in Thousands)</i>	H COUNTY	H CITY	H STATE	H FEDERAL	H OTHER	TOTAL
H OPTIONAL	40					40
Project Length: <i>(Nearest Tenth, State Unit of Measure)</i> 0.1 miles			Project No.: C-76(814)			
Signature: <i>Bruce H Filippi</i>		Title: Saline County Highway Superintendent		Date: 1-26-2021		

**Board of Public Roads Classifications and Standards
Form 7 One- and Six-Year Plan
Highway or Street Improvement Project**

County: Saline		City:		Village:		
Location Description: Big Blue Precinct Located Between Sections 13-24 T7N-R4E						
Existing Surface Type and Structures: <i>(Such as dirt, gravel, asphalt, concrete, culvert, or bridge)</i> Gravel 24' Existing Steel Bridge with Corrigated Deck Bridge # C007622030						
Average Daily Traffic: 2021 = 40, 2031 = 45			Classification Type: <i>(As shown on Functional Classification Map)</i> Local			
PROPOSED IMPROVEMENT						
Design Standard No.	Surfacing: Gravel	Thickness: 2"	Width: 28'			
<input checked="" type="checkbox"/> Grading	<input type="checkbox"/> Concrete	<input checked="" type="checkbox"/> Erosion Control	<input type="checkbox"/> Fencing			
<input checked="" type="checkbox"/> Aggregate	<input type="checkbox"/> Curb & Gutter	<input checked="" type="checkbox"/> Right of Way	<input type="checkbox"/> Sidewalks			
<input type="checkbox"/> Armor Coat	<input checked="" type="checkbox"/> Drainage Structures	<input checked="" type="checkbox"/> Utility Adjustments	<input type="checkbox"/> Lighting			
<input type="checkbox"/> Asphalt						
Bridge to Remain in Place	Roadway Width:	Length:	Type:			
New Bridge	Roadway Width:	Length:	Type:			
Box Culvert	Span: Twin 10'	Rise: 10'	Length: 45'	Type: CBC		
Culvert	Diameter:	Length:	Type:			
<input checked="" type="checkbox"/> Yes <input type="checkbox"/> N/A - Bridges and Culverts Sized <input type="checkbox"/> Hydraulic Analysis Pending						
Other Construction Features: Approach Grading, CBC Gravel Surfacing						
ESTIMATED COST (in Thousands)	H COUNTY	H CITY	H STATE	H FEDERAL	H OTHER	TOTAL
H OPTIONAL	84		101			185
Project Length: <i>(Nearest Tenth, State Unit of Measure)</i> 0.1 miles			Project No.: C-76(815)			
Signature: <i>Bruce H Filpi</i>		Title: Saline County Highway Superintendent		Date: 1-26-2021		

Board of Public Roads Classifications and Standards
Form 7 One- and Six-Year Plan
Highway or Street Improvement Project

County: Saline		City:		Village:		
Location Description: North Fork Precinct Located Between Sections 19-30 T6N-R2E						
Existing Surface Type and Structures: (Such as dirt, gravel, asphalt, concrete, culvert, or bridge) Gravel 8' Existing Timber Bridge						
Average Daily Traffic: 2022 = 20, 2032 = 25			Classification Type: (As shown on Functional Classification Map) Local			
PROPOSED IMPROVEMENT						
Design Standard No.	Surfacing: Gravel	Thickness: 2"	Width: 28'			
<input checked="" type="checkbox"/> Grading	<input type="checkbox"/> Concrete	<input checked="" type="checkbox"/> Erosion Control	<input type="checkbox"/> Fencing			
<input checked="" type="checkbox"/> Aggregate	<input type="checkbox"/> Curb & Gutter	<input type="checkbox"/> Right of Way	<input type="checkbox"/> Sidewalks			
<input type="checkbox"/> Armor Coat	<input checked="" type="checkbox"/> Drainage Structures	<input checked="" type="checkbox"/> Utility Adjustments	<input type="checkbox"/> Lighting			
<input type="checkbox"/> Asphalt						
Bridge to Remain in Place	Roadway Width:	Length:	Type:			
New Bridge	Roadway Width:	Length:	Type:			
Box Culvert	Span:	Rise:	Length:	Type:		
Culvert	Diameter: Twin 54"	Length: 32'	Type:			
<input checked="" type="checkbox"/> Yes <input type="checkbox"/> N/A - Bridges and Culverts Sized <input type="checkbox"/> Hydraulic Analysis Pending						
Other Construction Features: Approach Grading, Twin 54"x32' CMP with Headwalls Gravel Surfacing						
ESTIMATED COST (in Thousands)	H COUNTY	H CITY	H STATE	H FEDERAL	H OTHER	TOTAL
H OPTIONAL	40					40
Project Length: (Nearest Tenth, State Unit of Measure) 0.1 miles			Project No.: C-76(816)			
Signature: <i>Bruce H. Filbin</i>		Title: Saline County Highway Superintendent		Date: 1-28-2022		

Board of Public Roads Classifications and Standards
Form 7 One- and Six-Year Plan
Highway or Street Improvement Project

County: Saline	City:	Village:
Location Description: DeWitt Precinct Located Between Sections 12-13 T5N-R4E		
Existing Surface Type and Structures: <i>(Such as dirt, gravel, asphalt, concrete, culvert, or bridge)</i> Gravel 16' Existing Timber Bridge		
Average Daily Traffic: 2022 = 40, 2032 = 45		Classification Type: <i>(As shown on Functional Classification Map)</i> Local
PROPOSED IMPROVEMENT		
Design Standard No.	Surfacing: Gravel	Thickness: 2" Width: 28'
<input checked="" type="checkbox"/> Grading <input checked="" type="checkbox"/> Aggregate <input type="checkbox"/> Armor Coat <input type="checkbox"/> Asphalt	<input type="checkbox"/> Concrete <input type="checkbox"/> Curb & Gutter <input checked="" type="checkbox"/> Drainage Structures	<input checked="" type="checkbox"/> Erosion Control <input type="checkbox"/> Right of Way <input checked="" type="checkbox"/> Utility Adjustments <input type="checkbox"/> Fencing <input type="checkbox"/> Sidewalks <input type="checkbox"/> Lighting
Bridge to Remain in Place	Roadway Width:	Length: Type:
New Bridge	Roadway Width:	Length: Type:
Box Culvert	Span: Rise:	Length: Type:
Culvert	Diameter: Triple 60"	Length: 34' Type: CMP
<input checked="" type="checkbox"/> Yes <input type="checkbox"/> N/A - Bridges and Culverts Sized <input type="checkbox"/> Hydraulic Analysis Pending		
Other Construction Features: Approach Grading, Triple 60"x34' CMP with headwalls Gravel Surfacing		
ESTIMATED COST <i>(in Thousands)</i> H OPTIONAL	H COUNTY 50	H CITY H STATE H FEDERAL H OTHER TOTAL 50
Project Length: <i>(Nearest Tenth, State Unit of Measure)</i> 0.1 miles		Project No.: C-76(817)
Signature: <i>Bruce H. Frazier</i>	Title: Saline County Highway Superintendent	Date: 1-28-2022

Board of Public Roads Classifications and Standards
Form 7 One- and Six-Year Plan
Highway or Street Improvement Project

County: Saline	City:	Village:
Location Description: Wilber Precinct Located Between Sections 25-26 T6N-R4E		
Existing Surface Type and Structures: <i>(Such as dirt, gravel, asphalt, concrete, culvert, or bridge)</i> Gravel 16' Existing Timber Bridge		
Average Daily Traffic: 2022 = 20, 2032 = 25		Classification Type: <i>(As shown on Functional Classification Map)</i> Local
PROPOSED IMPROVEMENT		
Design Standard No.	Surfacing: Gravel	Thickness: 2"
		Width: 28'
<input checked="" type="checkbox"/> Grading	<input type="checkbox"/> Concrete	<input checked="" type="checkbox"/> Erosion Control
<input checked="" type="checkbox"/> Aggregate	<input type="checkbox"/> Curb & Gutter	<input type="checkbox"/> Right of Way
<input type="checkbox"/> Armor Coat	<input checked="" type="checkbox"/> Drainage Structures	<input checked="" type="checkbox"/> Utility Adjustments
<input type="checkbox"/> Asphalt		<input type="checkbox"/> Fencing
		<input type="checkbox"/> Sidewalks
		<input type="checkbox"/> Lighting
Bridge to Remain in Place	Roadway Width:	Length: Type:
New Bridge	Roadway Width:	Length: Type:
Box Culvert	Span: Rise:	Length: Type:
Culvert	Diameter: Triple 60" RE	Length: 32' Type: CMP
<input checked="" type="checkbox"/> Yes <input type="checkbox"/> N/A - Bridges and Culverts Sized <input type="checkbox"/> Hydraulic Analysis Pending		
Other Construction Features: Approach Grading, Triple 60"x32' RE CMP with headwalls Gravel Surfacing		
ESTIMATED COST <i>(in Thousands)</i>	H COUNTY	H CITY
H OPTIONAL	50	
		H STATE
		H FEDERAL
		H OTHER
		TOTAL
		50
Project Length: <i>(Nearest Tenth, State Unit of Measure)</i> 0.1 miles		Project No.: C-76(818)
Signature: <i>Bruce H Filipi</i>	Title: Saline County Highway Superintendent	Date: 1-28-2022

Board of Public Roads Classifications and Standards
Form 7 One- and Six-Year Plan
Highway or Street Improvement Project

County: Saline	City:	Village:
Location Description: DeWitt Precinct South Side Section 32 T5N-R4E		
Existing Surface Type and Structures: <i>(Such as dirt, gravel, asphalt, concrete, culvert, or bridge)</i> Gravel 20' Existing Timber Bridge		
Average Daily Traffic: 2022 = 25, 2032 = 30		Classification Type: <i>(As shown on Functional Classification Map)</i> Local
PROPOSED IMPROVEMENT		
Design Standard No.	Surfacing: Gravel	Thickness: 2"
		Width: 28'
<input checked="" type="checkbox"/> Grading	<input type="checkbox"/> Concrete	<input checked="" type="checkbox"/> Erosion Control
<input checked="" type="checkbox"/> Aggregate	<input type="checkbox"/> Curb & Gutter	<input type="checkbox"/> Right of Way
<input type="checkbox"/> Armor Coat	<input checked="" type="checkbox"/> Drainage Structures	<input checked="" type="checkbox"/> Utility Adjustments
<input type="checkbox"/> Asphalt		<input type="checkbox"/> Fencing
		<input type="checkbox"/> Sidewalks
		<input type="checkbox"/> Lighting
Bridge to Remain in Place	Roadway Width:	Length: Type:
New Bridge	Roadway Width:	Length: Type:
Box Culvert	Span: Rise:	Length: Type:
Culvert	Diameter: Triple 84"	Length: 34' Type: CMP
<input checked="" type="checkbox"/> Yes <input type="checkbox"/> N/A - Bridges and Culverts Sized <input type="checkbox"/> Hydraulic Analysis Pending		
Other Construction Features: Approach Grading, Triple 84"x34' CMP with Headwalls Gravel Surfacing		
ESTIMATED COST <i>(in Thousands)</i>	H COUNTY	H CITY
H OPTIONAL	60	
		H STATE
		H FEDERAL
		H OTHER
		TOTAL
		60
Project Length: <i>(Nearest Tenth, State Unit of Measure)</i> 0.1 miles		Project No.: C-76(819)
Signature: Bruce H. Filippi	Title: Saline County Highway Superintendent	Date: 1-28-2022

Board of Public Roads Classifications and Standards
Form 7 One- and Six-Year Plan
Highway or Street Improvement Project

County: Saline	City:	Village:
Location Description: DeWitt Precinct Located Between Sections 28-33 T5N-R4E		
Existing Surface Type and Structures: <i>(Such as dirt, gravel, asphalt, concrete, culvert, or bridge)</i> Gravel 11' Existing Timber Bridge		
Average Daily Traffic: 2022 = 20, 2032 = 25		Classification Type: <i>(As shown on Functional Classification Map)</i> Local
PROPOSED IMPROVEMENT		
Design Standard No.	Surfacing: Gravel	Thickness: 2"
		Width: 28'
<input checked="" type="checkbox"/> Grading	<input type="checkbox"/> Concrete	<input checked="" type="checkbox"/> Erosion Control
<input checked="" type="checkbox"/> Aggregate	<input type="checkbox"/> Curb & Gutter	<input type="checkbox"/> Right of Way
<input type="checkbox"/> Armor Coat	<input checked="" type="checkbox"/> Drainage Structures	<input checked="" type="checkbox"/> Utility Adjustments
<input type="checkbox"/> Asphalt		<input type="checkbox"/> Fencing
		<input type="checkbox"/> Sidewalks
		<input type="checkbox"/> Lighting
Bridge to Remain in Place	Roadway Width:	Length: Type:
New Bridge	Roadway Width:	Length: Type:
Box Culvert	Span: Rise: Length: Type:	
Culvert	Diameter: Twin 72"	Length: 38' Type: CMP
<input checked="" type="checkbox"/> Yes <input type="checkbox"/> N/A - Bridges and Culverts Sized <input type="checkbox"/> Hydraulic Analysis Pending		
Other Construction Features: Approach Grading, Twin 72"x38' CMP with headwalls Gravel Surfacing		
ESTIMATED COST <i>(in Thousands)</i>	H COUNTY	H CITY
H OPTIONAL	45	
	H STATE	H FEDERAL
		H OTHER
TOTAL		45
Project Length: <i>(Nearest Tenth, State Unit of Measure)</i> 0.1 miles		Project No.: C-76(820)
Signature: <i>Bruce H Filij</i>	Title: Saline County Highway Superintendent	Date: 1-28-2022

Board of Public Roads Classifications and Standards
Form 7 One- and Six-Year Plan
Highway or Street Improvement Project

County: Saline	City:	Village:
Location Description: Wilber Precinct Center Section 14 T6N-R4E		
Existing Surface Type and Structures: <i>(Such as dirt, gravel, asphalt, concrete, culvert, or bridge)</i> Gravel 24' Existing Timber Bridge Bridge # C007603005P		
Average Daily Traffic: 2022 = 40, 2032 = 45		Classification Type: <i>(As shown on Functional Classification Map)</i> Local
PROPOSED IMPROVEMENT		
Design Standard No.	Surfacing: Gravel	Thickness: 2" Width: 28'
<input checked="" type="checkbox"/> Grading <input checked="" type="checkbox"/> Aggregate <input type="checkbox"/> Armor Coat <input type="checkbox"/> Asphalt	<input type="checkbox"/> Concrete <input type="checkbox"/> Curb & Gutter <input checked="" type="checkbox"/> Drainage Structures	<input checked="" type="checkbox"/> Erosion Control <input checked="" type="checkbox"/> Right of Way <input checked="" type="checkbox"/> Utility Adjustments <input type="checkbox"/> Fencing <input type="checkbox"/> Sidewalks <input type="checkbox"/> Lighting
Bridge to Remain in Place	Roadway Width:	Length: Type:
New Bridge	Roadway Width:	Length: Type:
Box Culvert	Span: Twin 12'	Rise: 6' Length: 42' Type: CBC
Culvert	Diameter:	Length: Type:
<input checked="" type="checkbox"/> Yes <input type="checkbox"/> N/A - Bridges and Culverts Sized <input type="checkbox"/> Hydraulic Analysis Pending		
Other Construction Features: Approach Grading, CBC Gravel Surfacing		
ESTIMATED COST <i>(in Thousands)</i>	H COUNTY	H CITY
H OPTIONAL	225	
		H STATE
		H FEDERAL
		H OTHER
		TOTAL
		225
Project Length: <i>(Nearest Tenth, State Unit of Measure)</i> 0.1 miles		Project No.: C-76(821)
Signature: <i>Bruce H Filipi</i>	Title: Saline County Highway Superintendent	Date: 1-28-2022

Board of Public Roads Classifications and Standards
Form 7 One- and Six-Year Plan
Highway or Street Improvement Project

County: Saline		City:		Village:		
Location Description: South Fork Precinct Located Between Sections 28-33 T5N-R2E						
Existing Surface Type and Structures: <i>(Such as dirt, gravel, asphalt, concrete, culvert, or bridge)</i> Gravel 29' Existing steel, Wood, Cement Bridge Bridge # C007614815						
Average Daily Traffic: 2022 = 30, 2032 = 35			Classification Type: <i>(As shown on Functional Classification Map)</i> Local			
PROPOSED IMPROVEMENT						
Design Standard No.	Surfacing: Gravel	Thickness: 2"	Width: 28'			
<input checked="" type="checkbox"/> Grading	<input type="checkbox"/> Concrete	<input checked="" type="checkbox"/> Erosion Control	<input type="checkbox"/> Fencing			
<input checked="" type="checkbox"/> Aggregate	<input type="checkbox"/> Curb & Gutter	<input checked="" type="checkbox"/> Right of Way	<input type="checkbox"/> Sidewalks			
<input type="checkbox"/> Armor Coat	<input checked="" type="checkbox"/> Drainage Structures	<input checked="" type="checkbox"/> Utility Adjustments	<input type="checkbox"/> Lighting			
<input type="checkbox"/> Asphalt						
Bridge to Remain in Place	Roadway Width:	Length:	Type:			
New Bridge	Roadway Width:	Length:	Type:			
Box Culvert	Span: 12'	Rise: 8'	Length: 42'	Type: CBC		
Culvert	Diameter:	Length:	Type:			
<input checked="" type="checkbox"/> Yes <input type="checkbox"/> N/A - Bridges and Culverts Sized <input type="checkbox"/> Hydraulic Analysis Pending						
Other Construction Features: Approach Grading, CBC Gravel Surfacing						
ESTIMATED COST <i>(in Thousands)</i>	H COUNTY	H CITY	H STATE	H FEDERAL	H OTHER	TOTAL
H OPTIONAL	190					190
Project Length: <i>(Nearest Tenth, State Unit of Measure)</i> 0.1 miles			Project No.: C-76(822)			
Signature: <i>Bruce H. Fujita</i>		Title: Saline County Highway Superintendent		Date: 1-28-2022		

Board of Public Roads Classifications and Standards
Form 7 One- and Six-Year Plan
Highway or Street Improvement Project

County: Saline	City:	Village:
Location Description: Brush Creek Precinct North Side Section 5 T6N-R3E		
Existing Surface Type and Structures: <i>(Such as dirt, gravel, asphalt, concrete, culvert, or bridge)</i> Gravel 30' Existing Timber Bridge Bridge # C007602615		
Average Daily Traffic: 2022 = 30, 2032 = 35		Classification Type: <i>(As shown on Functional Classification Map)</i> Local
PROPOSED IMPROVEMENT		
Design Standard No.	Surfacing: Gravel	Thickness: 2" Width: 28'
<input checked="" type="checkbox"/> Grading <input checked="" type="checkbox"/> Aggregate <input type="checkbox"/> Armor Coat <input type="checkbox"/> Asphalt	<input type="checkbox"/> Concrete <input type="checkbox"/> Curb & Gutter <input checked="" type="checkbox"/> Drainage Structures	<input checked="" type="checkbox"/> Erosion Control <input checked="" type="checkbox"/> Right of Way <input checked="" type="checkbox"/> Utility Adjustments <input type="checkbox"/> Fencing <input type="checkbox"/> Sidewalks <input type="checkbox"/> Lighting
Bridge to Remain in Place	Roadway Width:	Length: Type:
New Bridge	Roadway Width:	Length: Type:
Box Culvert	Span: Twin 12'	Rise: 8' Length: 42' Type: CBC
Culvert	Diameter:	Length: Type:
<input checked="" type="checkbox"/> Yes <input type="checkbox"/> N/A - Bridges and Culverts Sized <input type="checkbox"/> Hydraulic Analysis Pending		
Other Construction Features: Approach Grading, CBC Gravel Surfacing		
ESTIMATED COST <i>(in Thousands)</i>	H COUNTY	H CITY
H OPTIONAL	240	
Project Length: <i>(Nearest Tenth, State Unit of Measure)</i> 0.1 miles		Project No.: C-76(823)
Signature: <i>Bruce H. Fisher</i>	Title: Saline County Highway Superintendent	Date: 1-28-2022

Board of Public Roads Classifications and Standards
Form 7 One- and Six-Year Plan
Highway or Street Improvement Project

County: Saline		City:		Village:		
Location Description: Pleasant Hill Precinct Located Between Sections 17-18 T7N-R3E						
Existing Surface Type and Structures: (Such as dirt, gravel, asphalt, concrete, culvert, or bridge) Gravel 16' Existing Timber Bridge						
Average Daily Traffic: 2022 = 40, 2032 = 45			Classification Type: (As shown on Functional Classification Map) Local			
PROPOSED IMPROVEMENT						
Design Standard No.	Surfacing: Gravel	Thickness: 2"	Width: 28'			
<input checked="" type="checkbox"/> Grading	<input type="checkbox"/> Concrete	<input checked="" type="checkbox"/> Erosion Control	<input type="checkbox"/> Fencing			
<input checked="" type="checkbox"/> Aggregate	<input type="checkbox"/> Curb & Gutter	<input type="checkbox"/> Right of Way	<input type="checkbox"/> Sidewalks			
<input type="checkbox"/> Armor Coat	<input checked="" type="checkbox"/> Drainage Structures	<input checked="" type="checkbox"/> Utility Adjustments	<input type="checkbox"/> Lighting			
<input type="checkbox"/> Asphalt						
Bridge to Remain in Place	Roadway Width:	Length:	Type:			
New Bridge	Roadway Width:	Length:	Type:			
Box Culvert	Span:	Rise:	Length:	Type:		
Culvert	Diameter: Triple 66" RE	Length: 34'	Type: CMP			
<input checked="" type="checkbox"/> Yes <input type="checkbox"/> N/A - Bridges and Culverts Sized <input type="checkbox"/> Hydraulic Analysis Pending						
Other Construction Features: Approach Grading, Triple 66"x34' RE CMP With Headwalls Gravel Surfacing						
ESTIMATED COST (in Thousands)	H COUNTY	H CITY	H STATE	H FEDERAL	H OTHER	TOTAL
H OPTIONAL	55					55
Project Length: (Nearest Tenth, State Unit of Measure) 0.1 miles			Project No.: C-76(824)			
Signature: <i>Bruce H Filz</i>		Title: Saline County Highway Superintendent		Date: 1-28-2022		

Board of Public Roads Classifications and Standards
Form 8 Summary of One-Year Plan

Year Ending: June 30, 2023

Sheet 1 of 2

County: Saline		City:		Village:	
PRIORITY NUMBER	PROJECT NUMBER	LENGTH <i>(Nearest Tenth)</i>	UNIT OF MEASURE	ESTIMATED COST <i>(Thousands)</i>	REMARKS
1	C-76 (628)	2.0	miles	10	
2	C-76 (705)	0.1	miles	23	
3	C-76 (723)	0.1	miles	180	
4	C-76 (752)	0.2	miles	1200	BRO Project
5	C-76 (761)	0.1	miles	220	CBC CBMP5
6	C-76 (762)	0.1	miles	150	CBC
7	C-76 (763)	0.1	miles	210	CBC
8	C-76 (777)	0.3	miles	200	CBC
9	C-76 (778)	0.3	miles	140	CBC
10	C-76 (779)	0.2	miles	35	
11	C-76 (780)	0.1	miles	33	
12	C-76 (786)	0.1	miles	45	
13	C-76 (787)	0.1	miles	45	
14	C-76 (790)	0.3	miles	600	
15	C-76 (809)	0.1	miles	225	CBC
16	C-76 (810)	0.1	miles	40	
17	C-76 (811)	0.1	miles	15	
18	C-76 (812)	0.1	miles	30	
19	C-76 (813)	0.1	miles	40	
20	C-76 (814)	0.1	miles	40	
21	C-76 (815)	0.1	miles	185	CBC CBMP5
22	C-76 (816)	0.1	miles	40	
23	C-76 (817)	0.1	miles	50	
24	C-76 (818)	0.1	miles	50	
25	C-76 (819)	0.1	miles	60	
26	C-76 (820)	0.1	miles	45	
Signature: <i>Bruce H. Fisher</i>		Title: Saline County Highway Superintendent		Date: 1-28-2022	

Board of Public Roads Classifications and Standards
Form 9 Summary of Six-Year Plan

Six-Year Period Ending: June 30, 2028

Sheet 1 of 2

County: Saline		City:		Village:	
PRIORITY NUMBER	PROJECT NUMBER	LENGTH (Nearest Tenth)	UNIT OF MEASURE	ESTIMATED COST (Thousands)	REMARKS
1	C-76 (628)	2.0	miles	10	
2	C-76 (658)	0.8	miles	230	
3	C-76 (679)	0.2	miles	600	BRO Project
4	C-76 (687)	0.2	miles	600	BRO Project
5	C-76 (705)	0.1	miles	23	
6	C-76 (723)	0.1	miles	180	
7	C-76 (752)	0.2	miles	1200	BRO Project
8	C-76 (761)	0.1	miles	356	CBC
9	C-76 (762)	0.1	miles	150	CBC
10	C-76 (763)	0.1	miles	210	CBC
11	C-76 (777)	0.3	miles	200	CBC
12	C-76 (778)	0.3	miles	140	CBC
13	C-76 (779)	0.2	miles	35	
14	C-76 (780)	0.1	miles	33	
15	C-76 (786)	0.1	miles	45	
16	C-76 (787)	0.1	miles	45	
17	C-76 (790)	0.3	miles	600	
18	C-76 (806)	0.2	miles	180	CBC
19	C-76 (807)	0.1	miles	200	CBC
20	C-76 (808)	0.1	miles	200	CBC
21	C-76 (809)	0.1	miles	225	CBC
22	C-76 (810)	0.1	miles	40	
23	C-76 (811)	0.1	miles	15	
24	C-76 (812)	0.1	miles	30	
25	C-76 (813)	0.1	miles	40	
26	C-76 (814)	0.1	miles	40	
Signature: <i>Bruce H Filipi</i>		Title: Saline County Highway Superintendent		Date: 1-26-2022	

Board of Public Roads Classifications and Standards
Form 11 Report of Previous Year
Highway or Street Improvement

Year Ending: June 30, 2023

Sheet 1 of 2

County: SALINE		City:		Village:		
PROJECT NUMBER	LENGTH (Nearest Tenth)	UNIT OF MEASURE	PROJECT COST (Thousands)	CONTRACT PROJECT	OWN FORCES	DATE COMPLETED (Actual or Estimated)
C-76 (628)	2.0	miles	10		x	Delayed 1 year
C-76 (705)	0.1	miles	23		x	Delayed 1 year
C-76 (723)	0.1	miles	180		x	Delayed 1 year
C-76 (752)	0.2	miles	1200	x		Delayed 1 year
C-76 (761)	0.1	miles	356	x		Delayed 1 year
C-76 (762)	0.1	miles	150	x		Delayed 1 year
C-76 (763)	0.1	miles	210	x		Delayed 1 year
C-76 (765)	0.1	miles	50		x	Aug 2021
C-76 (768)	0.1	miles	45		x	July 2021
C-76 (769)	0.2	miles	35		x	Aug 2021
C-76 (770)	0.2	miles	35		x	Aug 2021
C-76 (771)	0.1	miles	45		x	July 2021
C-76 (777)	0.3	miles	200	x		Delayed 1 year
C-76 (778)	0.3	miles	140	x		Delayed 1 year
C-76 (779)	0.2	miles	35		x	Delayed 1 year
C-76 (780)	0.1	miles	33		x	Delayed 1 year
C-76 (782)	0.1	miles	45		x	Oct 2021
C-76 (783)	0.1	miles	28		x	Dec 2021
C-76 (785)	0.1	miles	50		x	Dec 2021
C-76 (786)	0.1	miles	45		x	Delayed 1 year
C-76 (787)	0.1	miles	45		x	Delayed 1 year
C-76 (788)	0.2	miles	25		x	Nov 2021
C-76 (790)	0.3	miles	600		x	Delayed 1 year
C-76 (791)	0.2	miles	244	x		Dec 2021
C-76 (792)	0.1	miles	253	x		Dec 2021
Signature: <i>Bruce H. Filipi</i>		Title: Saline County Highway Superintendent		Date: 1-28-2022		

**Board of Public Roads Classifications and Standards
Form 11 Report of Previous Year
Highway or Street Improvement**

Year Ending: June 30, 2023

Sheet 2 of 2

County: SALINE		City:		Village:		
PROJECT NUMBER	LENGTH (Nearest Tenth)	UNIT OF MEASURE	PROJECT COST (Thousands)	CONTRACT PROJECT	OWN FORCES	DATE COMPLETED (Actual or Estimated)
C-76 (793)	0.6	miles	50	x		Nov 2021
C-76 (794)	0.6	miles	50	x		Nov 2021
C-76 (795)	1.0	miles	80	x		Nov 2021
C-76 (796)	0.75	miles	60	x		Nov 2021
C-76 (797)	0.5	miles	40	x		Nov 2021
C-76 (798)	1.0	miles	80	x		Nov 2021
C76 (799)	0.6	miles	50	x		Nov 2021
C76 (800)	0.6	miles	50	x		Nov 2021
C76 (801)	1.0	miles	80	x		Nov 2021
C76 (802)	0.4	miles	30	x		Nov 2021
C76 (803)	0.6	miles	50	x		Nov 2021
C76 (804)	0.6	miles	50	x		Nov 2021
C76 (805)	0.5	miles	40	x		Nov 2021
C76 (810)	0.1	miles	40		x	Delayed 1 year
C76 (811)	0.1	miles	15		x	Delayed 1 year
C76 (812)	0.1	miles	30		x	Delayed 1 year
C76 (813)	0.1	miles	40		x	Delayed 1 year
C76 (814)	0.1	miles	40		x	Delayed 1 year
C76 (815)	0.1	miles	185	x		Delayed 1 year
Signature: <i>Bruce H Filbin</i>		Title: Saline County Highway Superintendent		Date: 1-28-2022		

RESOLUTION

2022-07

WHEREAS, the following was recommended by Bruce H. Filipi, Saline County Highway Superintendent:

1. That the Board of County Commissioners of Saline County, Ne., herein after referred to as "County Board", vacate and abandon the public road located between Section 4-T8N-R3E, and Section 5-T8N-R3E, beginning at the intersection of Saline County Roads 1500 & B and running approximately ½ mile North between County Roads B & A.
2. That upon abandonment thereof, the existing County Right-of-Way shall revert back to the adjacent landowners.

and

WHEREAS, the County Board did direct the study to be made and a report was submitted to the Board in writing.

and

WHEREAS, a Resolution ordering a Public Hearing on the vacation and abandonment of said road is hereby made and adopted and a public hearing date is set for April 12, 2022, at 11:00 a.m., in the County Commissioners' room, Saline County Courthouse.

THE BOARD OF COUNTY
COMMISSIONERS OF SALINE COUNTY

ATTEST:

County Clerk

Chairman

Board Member _____

Moved the adoption of said resolution

Date March 15, 2022

Roll Call _____ yea _____ nay _____

Resolution adopted and signed