

**WEeping WATER SCHOOL  
DISTRICT #13-0022-CASS COUNTY, NEBRASKA  
BOARD OF EDUCATION MEETING  
WEeping WATER PUBLIC SCHOOLS BUSINESS ROOM**

NOTICE for this meeting was posted in the identified locations as per district policy.

1. AGENDA
  - 1.a. Call the meeting to order
  - 1.b. Roll Call
  - 1.c. Acknowledgement of Nebraska Open Meetings Act posted
  - 1.d. Excuse absent board members
  - 1.e. Approval of consent agenda
    - 1.e.a. Approval of previous meetings minutes
    - 1.e.b. Notification of meeting publication site, date, and time
    - 1.e.c. Financial Reports
    - 1.e.d. Payment of Bills
    - 1.e.e. Next regular meeting date - November 15
2. Communications
3. Visitors/Open Forum and staff and program presentations
4. Action Items
  - 4.a. Discuss, consider, and take all necessary action to give approval to the Red Ribbon Week and American Education Week Proclamations.
  - 4.b. Discuss, consider, and take all necessary action to approve a NASB Delegate
  - 4.c. Discuss, consider, and take all necessary action to recognize the WWEA as the bargaining agent for the certified staff members for the 2023-2024 school year.
  - 4.d. Discuss, consider, and take all necessary action to approve a teaching contract with Marcy Wilfong
  - 4.e. Discuss, consider, and take all necessary action to consider a Daktronics warranty
  - 4.f. Discuss, consider, and take all necessary action to declare items as excess equipment and designate it for auction
  
  - 4.g. Discuss, consider, and take all necessary action to purchase or lease a 65/71 passenger school bus
  - 4.h. Discuss, consider, and take all necessary action to purchase or lease a 14 passenger mini school bus
  - 4.i. Discuss, consider, and take all necessary action to purchase UTV
  - 4.j. Discuss, consider, and take all necessary action to give approval to adjust the 2021/22 School Calendar
  - 4.k. Discuss, consider, and take all necessary action to give approval to policies to be reviewed
5. Reports
  - 5.a. Athletic Director's Report
  - 5.b. Elementary Principals' Report
  - 5.c. Secondary Principal's Report
  - 5.d. Director of School Improvement and SPED's report

- 5.e. Superintendent's Report
6. Board Reports
7. Executive session
  - 7.a. Discuss, consider, and take all necessary action to go into executive session
  - 7.b. Discuss, consider, and take all necessary action to go into executive session
8. Adjournment

\*\* Members of the board of education may move to enter "closed" session or adjust the order of the agenda at any point during the regular meeting.

**Weeping Water Public School  
Financial Report for Board  
October 2021**

# CASH ASSETS

## CASH ASSET REPORT

DATE: 10/18/21

FUND	ACCOUNT TYPE	INFORMATION	HOLDER	CURRENT BALANCE	BALANCE 2019
GENERAL FUND/KITCHEN FUND	CHECKING	300380832	Farmers & Merchants	\$ 1,078,362.61	\$ 619,320.44
	CLOSED ACCOUNT	300382812	Farmers & Merchants	\$ -	\$ 19,991.94
<b>TOTAL GENERAL FUND</b>				<b>\$ 1,078,362.61</b>	<b>\$ 639,312.38</b>
ACTIVITY FUND	CHANGE			\$ 1,140.00	\$ 1,140.00
ACTIVITY FUND	PETTY CASH			\$ 100.00	\$ 100.00
ACTIVITY FUND	CHECKING	300444190	Farmers & Merchants	\$ 167,445.65	\$ 117,958.61
ACTIVITY FUND	SAVINGS #1	300689661	Farmers & Merchants	\$ 3,693.41	\$ 3,069.78
<b>TOTAL ACTIVITY FUND</b>				<b>\$ 172,379.06</b>	<b>\$ 122,268.39</b>
BOND FUND	MONEY MARKET	95010505	First Nebraska Bank	\$ 1,194,883.30	\$ 444,784.92
<b>TOTAL BOND FUND</b>				<b>\$ 1,194,883.30</b>	<b>\$ 444,784.92</b>
QCPU FUND	CHECKING-2009 & 2010 BAB	86483570	First Nebraska Bank	\$ 200,359.63	\$ 114,670.29
<b>TOTAL QCPU FUND</b>				<b>\$ 200,359.63</b>	<b>\$ 114,670.29</b>
BUILDING FUND	CHECKING	300381079	Farmers & Merchants	\$ 297,720.41	\$ 307,942.28
<b>TOTAL BUILDING FUND</b>				<b>\$ 297,720.41</b>	<b>\$ 307,942.28</b>
DEPRECIATION FUND	CHECKING	300446542	Farmers & Merchants	\$ 647,551.54	\$ 667,894.46
<b>TOTAL DEPRECIATION FUND</b>				<b>\$ 647,551.54</b>	<b>\$ 667,894.46</b>
EMPLOYEE BENEFIT FUND	CHECKING/RETIREMENT	300381061	Farmers & Merchants	\$ 52,800.86	\$ 67.36
EMPLOYEE BENEFIT FUND	CHECKING/SECTION 125	86234570	First Nebraska Bank	\$ 36,141.04	\$ 32,543.92
<b>TOTAL EMPLOYEE BENEFITS FUND</b>				<b>\$ 88,941.90</b>	<b>\$ 32,611.28</b>
STUDENT FEES FUND	Checking HOPPER GRANT HS	85834670	First Nebraska Bank	\$ 14,979.58	\$ 12,034.40
<b>TOTAL STUDENT FEES FUND</b>				<b>\$ 14,979.58</b>	<b>\$ 12,034.40</b>
<b>TOTAL</b>				<b>\$ 3,695,178.03</b>	<b>\$ 2,341,518.40</b>

# Weeping Water Public School

## October 2021 Claims for Payment

A-1 Locksmith, L.L.C.	\$339.50
Amy Kroll	\$29.32
Biology Products	\$398.10
Blick Art Materials	\$3,133.01
Blue Valley Community Action	\$20.00
Bohl Plumbing & Heating, In.c	\$626.52
Cassgram	\$332.00
City Of Weeping Water	\$957.24
Conestoga Public Schools	\$5,220.96
Dana F. Cole & Co, LLP	\$5,635.00
DFA Dairy Brands Corporation, LLC	\$1,373.79
Dietze Music House	\$48.00
Educational Service Unit 3	\$3,076.52
Egan Supply Company,Inc	\$1,299.99
FunShine Express	\$1,661.59
FUTURAMIC'S CLEAN WATER CENTER	\$22.50
Georgia Holdings Inc	\$706.17
J W Pepper & Son Inc	\$66.23
Just For Kids, Inc.	\$1,332.50
Keckler Oil Co Inc	\$391.73
KSB School Law	\$1,082.00
Lincoln Journal Star	\$73.74
Linda Cox	\$205.00
Linda Twomey	\$749.36
Martin Bros. Distributing Co., Inc.	\$8,128.72
Meeske Auto Parts	\$206.94
Meeske Hardware Inc	\$2,130.69
Menards-Bellevue	\$41.48
MEYER LABORATORY	\$1,468.00
Mid-America Termite & Pest Control, Inc	\$86.96
MMC Contractors	\$546.75
Music is Elementary	\$152.10
Nebraska Assn/School Boards Inc	\$1,575.00
Nebraska Council of School Administrators	\$150.00
Nebraska Iowa Supply Co., Inc.	\$2,009.14
Omaha Public Power Department	\$8,431.11
One Source	\$105.00
Quadient Inc.	\$89.97
Riverside Insights	\$52.50
Stericycle, Inc./Shred It	\$50.64
Stop 'N Shop Inc	\$76.56
Studies Weekly	\$11,870.12
Susan Smith	\$51.40
Swiftreach Networks, LLC	\$900.00
Symmetry Energy Solutions	\$1,428.38
Tiffanie Welte	\$203.47
TK Elevator Corporation	\$384.58
Toshiba Financial Services	\$1,374.14
Unite Private Networks, LLC	\$416.41
University of Minnesota	\$2,500.00
US BANK	\$4,816.74

US FOODS, INC.	\$8,544.62
Vala's Pumpkin Patch	\$160.00
Verizon Wireless LLC	\$120.32
WEX Bank	\$392.40
<b>October Claims for Payment</b>	<b>\$87,244.91</b>
<b>October Payroll</b>	<b>\$429,294.64</b>
	<b>\$516,539.55</b>

FISCAL BUDGET USE PER MONTH

August 2021

UPDATED: 10/18/21

MONTH END	FISCAL 19 % USED 19 Budget =	FISCAL 19 \$ USED	FISCAL 20 % USED 20 Budget =	FISCAL 20 \$ USED	FISCAL 21 % USED 21 Budget =	FISCAL 21 \$ USED
September	6.61%	\$382,439.25	8.63%	\$509,636.00	9.84%	\$ 549,119.46
October	6.75%	\$386,813.85	8.10%	\$475,019.13	8.66%	\$ 482,318.88
November	6.91%	\$397,916.12	8.21%	\$484,224.73	8.02%	\$ 447,296.05
December	6.86%	\$396,306.16	7.82%	\$461,218.51	7.18%	\$ 401,048.09
January	6.36%	\$365,874.23	9.20%	\$542,851.08	7.25%	\$ 404,367.83
February	7.22%	\$415,992.95	8.24%	\$464,052.86	8.59%	\$ 479,065.59
March	7.16%	\$414,109.63	7.35%	\$433,365.24	9.00%	\$ 502,362.41
April	7.67%	\$437,834.07	7.49%	\$442,027.14	8.19%	\$ 456,974.29
May	7.72%	\$446,475.75	6.95%	\$409,736.54	8.65%	\$ 482,601.97
June	8.09%	\$467,499.35	6.78%	\$399,620.00	7.70%	\$ 429,852.67
July	6.93%	\$400,703.04	7.17%	\$422,609.66	9.45%	\$ 527,205.00
August	12.00%	\$691,092.75	7.92%	\$466,449.71	9.76%	\$ 544,620.05
<b>Cumulative</b>	<b>90.28%</b>	<b>\$5,203,057.15</b>	<b>93.86%</b>	<b>\$5,510,810.60</b>	<b>102.29%</b>	<b>\$5,706,832.29</b>

TOTAL EXPENSE BUDGET \$ 5,579,513.00

FISCAL BUDGET USE PER MONTH

September 2021

UPDATED: 10/18/21

MONTH END	FISCAL 20 % USED 20 Budget =	FISCAL 20 \$ USED	FISCAL 21 % USED 21 Budget =	FISCAL 21 \$ USED	FISCAL 22 % USED 22 Budget =	FISCAL 22 \$ USED
September	8.63%	\$509,636.00	9.84%	\$ 549,119.46	8.24%	\$ 516,539.55
October	8.10%	\$475,019.13	8.66%	\$ 482,318.88		
November	8.21%	\$484,224.73	8.02%	\$ 447,296.05		
December	7.82%	\$461,218.51	7.18%	\$ 401,048.09		
January	9.20%	\$542,851.08	7.25%	\$ 404,367.83		
February	8.24%	\$464,052.86	8.59%	\$ 479,065.59		
March	7.35%	\$433,365.24	9.00%	\$ 502,362.41		
April	7.49%	\$442,027.14	8.19%	\$ 456,974.29		
May	6.95%	\$409,736.54	8.65%	\$ 482,601.97		
June	6.78%	\$399,620.00	7.70%	\$ 429,852.67		
July	7.17%	\$422,609.66	9.45%	\$ 527,205.00		
August	7.92%	\$466,449.71	9.76%	\$ 544,620.05		
<b>Cumulative</b>	<b>93.86%</b>	<b>\$5,510,810.60</b>	<b>102.29%</b>	<b>\$5,706,832.29</b>	<b>8.24%</b>	<b>\$516,539.55</b>

TOTAL EXPENSE BUDGET \$ 5,579,513.00

OPERATING BUDGET \$ 5,746,898.39

W/ SIXPENCE \$ 6,271,898.39

# American Education Week

## Proclamation

**WHEREAS,** *public schools are the backbone of our democracy, providing young people with the tools they need to maintain our nation's precious values of freedom, civility and equality; and*

**WHEREAS,** *by equipping young Americans with both practical skills and broader intellectual abilities, schools give them hope for, and access to, a productive future; and*

**WHEREAS,** *education employees, be they substitute educators, custodians, teachers, bus drivers, or librarians, work tirelessly to serve our children and communities with care and professionalism; and*

**WHEREAS,** *schools encourage community, bringing together adults and children, educators and volunteers, business leaders, and elected officials in a common enterprise.*

**NOW, THEREFORE,** *we, the Board of Education of Weeping Water Public Schools proclaim **November 15-19, 2021** as the annual observance of American Education Week.*

\_\_\_\_\_  
Adam DeMike  
Board President

\_\_\_\_\_  
Date

\_\_\_\_\_  
Kevin Reiman  
Superintendent

\_\_\_\_\_  
Date



## **– PROCLAMATION –**

**WHEREAS**, alcohol and drug abuse affect individuals, families, and communities across the nation; and

**WHEREAS**, it is imperative that visible, unified efforts by community members be launched to prevent drug abuse; and

**WHEREAS**, Red Ribbon Week offers citizens the opportunity to demonstrate their commitment to drug-free lifestyles; and

**WHEREAS**, Red Ribbon Week will be celebrated in communities across the nation on October 23-31; and

**WHEREAS**, businesses, government, law enforcement, media, health care providers, religious institutions, schools, and other community-based organizations will demonstrate their commitment to healthy, drug-free lifestyles by wearing red ribbons and participating in drug prevention activities; and

**WHEREAS**, Weeping Water Public Schools further commits its resources to ensure the success of Red Ribbon Week;

**NOW, THEREFORE, BE IT RESOLVED**, Weeping Water Public Schools do hereby proclaim October 23-31, as RED RIBBON WEEK, and encourage you to participate in drug prevention education activities, not only during Red Ribbon Week, but also throughout the year, making a visible statement that we are strongly committed to a drug-free lifestyle.

Dated this 18th day of October, 2021.

---

Adam DeMike, BOE President

---

Kevin Reiman, Superintendent

October 1,2021

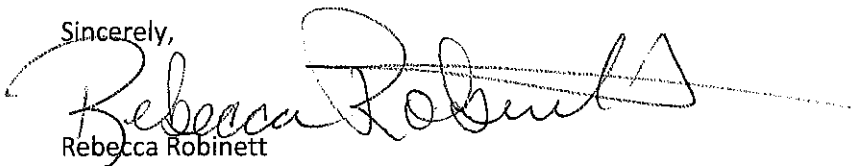
Weeping Water Public School  
Board of Education  
204 W. O ST.  
Weeping Water, NE 68643

Dear Negotiations Committee:

The Weeping Water Education Association requests that the school board of the Weeping Water Public Schools take the action to recognize Weeping Water Education Association as the exclusive bargaining agent for the district's non-supervisory certificated staff for the 2022-2023 contract year.

Please direct your response to the undersigned.

Sincerely,

A handwritten signature in cursive script that reads "Rebecca Robinett". The signature is written in black ink and is positioned above the typed name.

Rebecca Robinett

President

Weeping Water Education Association

2007 Ford Fusion  
2004 Chevrolet Malibu  
2008 Bluebird Bus  
2006 Ford E350 Van

Two weight racks  
Two resilite wrestling mats  
One older wrestling mat  
Three smaller sections of resilite wrestling mats  
Three computer charging carts  
~50 toilet paper holders (dual roll)  
One metal cabinet  
~20 teal stackable chairs  
Three Schwinn bike machines (fan type)  
Abdominal crunch / lower back extensions weight machine  
Pull-up station  
Abdominal crunch machine  
Pectoral muscle machine  
~39 Aerobic steps  
15 Mac Laptops  
25 iPads (1<sup>st</sup> or 2<sup>nd</sup> generation)  
Two classroom sets of iPods  
Three iMacs with keyboards  
Library Magazine stand  
Kids cubby station (5 lockers)  
Ten 6-foot folding tables  
Eleven 8-foot folding tables  
Three 4-drawer filing cabinets  
Three 2-drawer filing cabinets

Mr. Kevin Reiman - Superintendent  
Weeping Water Public School  
204 West O  
Weeping Water, Nebraska NE 68463

Dear Mr. Reiman,

Please see the attached below your purchase pricing and lease price options. I want to thank you on behalf of Nebraska/Central Equipment, Inc. for the opportunity to supply your district's upcoming transportation needs.

Option 1\*:

Collateral:	One (1) 2022 Micro Bird G5
Lease Term:	5-years
Annual Payments:	\$10,540.00 + <i>applicable tax, if any</i>
Purchase Price:	\$68,795.00

Option 2\*:

Collateral:	One (1) 2023 Blue Bird Vision – <i>Diesel Powered</i>
Lease Term:	5-years
Annual Payments:	\$14,186.00 + <i>applicable tax, if any</i>
Purchase Price:	\$98,899.00

Option 3\*:

Collateral:	One (1) 202 Blue Bird Vision – <i>Gasoline Powered</i>
Lease Term:	5-years
Annual Payments:	\$13,904.00 + <i>applicable tax, if any</i>
Purchase Price:	\$95,895.00

**\*Subject to credit approval**

Many Thanks,

Date: \_\_\_\_\_

Name: \_\_\_\_\_

Title: \_\_\_\_\_

Tyler Cox  
General Manager  
Nebraska/Central Equipment, Inc.

Signature: \_\_\_\_\_



# PROPOSAL

Blue Bird Vision  
–passengers

## School bus

Created for:

Quote is valid for        days

Delivery:



**NEBRASKA / CENTRAL  
EQUIPMENT, INC.**

bus sales & service

Quote ID #:

# Blue Bird Vision

PASSENGER



**Safe-Durable-Quality  
Construction**

## CHASSIS

National School Bus Yellow  
Chrome grill and black bumpers  
Dual rear wheels  
**in. wheelbase**

### Engine

**Engine block heater**

Engine oil cooler

Transmission oil cooler

**- amp alternator**

Dual heavy-duty battery

**Gross Vehicle Weight Rating** lbs

Front GAWR lbs

Rear vehicle weight lbs

Rear axle ratio

**Bucket driver's seat, vinyl with arm rest**

**Electronic Automatic Transmission**

**brakes with ABS**

Odometer

Power steering

Cruise control with message center

Fuel tank capacity: 25 gallons

50-state emissions system

Radio (*aftermarket AM-FM-CD-USB*)

4 speakers

Dual Note Horn

Dual Intermittent wipers

Tires -

12V, Group 31 batteries

CCA on batteries

Battery Disconnect Switch

Tilt & Telescope Steering Column

Overall Length of Bus:

= Body Length plus 7' 9"



Purpose Built Blue Bird OEM chassis

**Cummins 6.7L i6 Turbo Diesel**



**Select Shift Transmission w. cooler**



## BLUE BIRD BODY

**77 in.** Headroom

**128 in.** Exterior height

**90.75 in.** interior width

**96 in.** exterior width

**31 in. Electrical entrance dual doors with clear glass, 72" height, with external key switch**

Entrance stainless steel grab rail, LH side  
vinyl modesty panels R

Step well LED light

Intermediate side marker lights

Identification, Clearance and Directional lights

Licence plate LED light

Inside mirror, in.

**Exterior heated mirrors** with black brackets Grey

rubber flooring with white step nosing

head pads above all doors

Decals: Emergency exits

Alarm for solid rear cargo door

Static roof vent

**Tinted windows 27 in./35 in. with Push-outs**

Steel rear bumper

**Exterior covering:**

Aluminum 18-gauge side panels and fibreglass  
front and rear caps. (*Body will not rust.*)

Body drip rails

3M red body reflectors

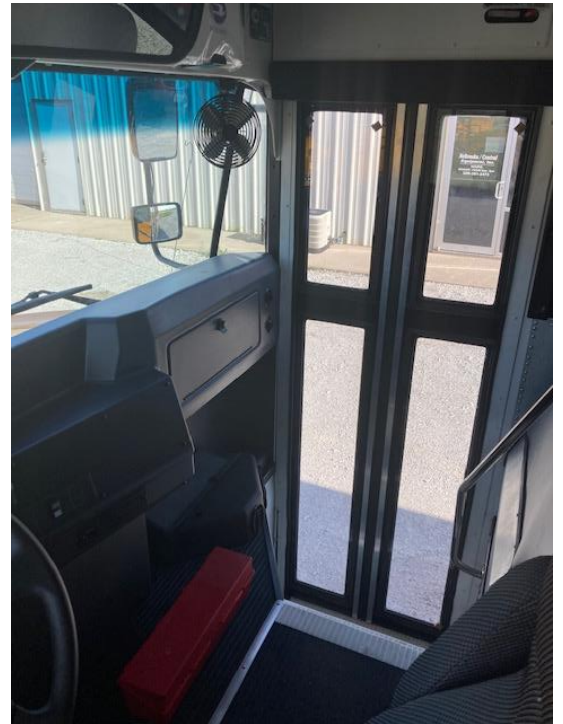
**Body undercoating**

Dash Area Glove Box

Padded Shoulder Rail - length of bus

### More Visibility

A larger **More-View** glass minimizes the A-pillar blind spot while improving visibility of the loading area.



**31" wide door**  
with duct heated  
entrance and anti  
slip steps

**LED step well light**

**Exterior locking  
keyed entry**

### Heated mirrors



Combined exterior heated mirrors  
(convex & standard) 7 X 10 in. / 7  
X 6 in. (*black brackets*)

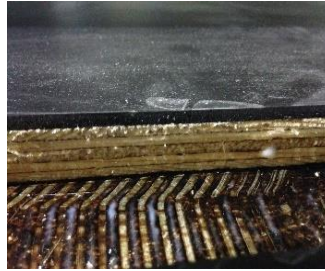
**Ergonomics**  
Ergonomically designed  
and integrated control  
panel.



## BUILT-TO-LAST STRUCTURE

### Floor structure

- 14-gauge floor C CHANNELS (aluminum);
- 14-gauge aluminum floor;
- **Completely sealed 5-layer floor** (black sound deadening & rust proofing sealant)
- 1/2" plywood screwed to floor with stainless steel self tapping screws.



### Galvanized steel body structure

- 18-gauge galvanized(zinc coated), insulated one-piece hat shaped steel roof bow construction. (roll over protection)
- (2) 18-gauge roll formed longitudinal structural beams & aluminum extrusions run the full length of the body.
- Mechanically assembled structure with stainless steel huck-bolts and fasteners
- Butyl tape and membrane installed between different metals to prevent galvanic corrosion
- School safe body structure construction



### **Galvanized steel side impact barriers**

Acts as a protective cocoon for the occupants.

- Superior 16-gauge steel interior side panels for maximum protection against side impacts;
- **11-gauge angle iron seat rail, the full length of the body.**



### **Superior quality bus body insulation (R6 Value)**

- 1 ½ in. fibreglass throughout entire body structure
- 1 ½ in. fibreglass insulation inside of roof bows to prevent condensation;
- 1 ½ in. behind electrical panel and in roof caps.
- **Reduces road noise and vibrations**



## BLUE BIRD STANDARD FEATURES

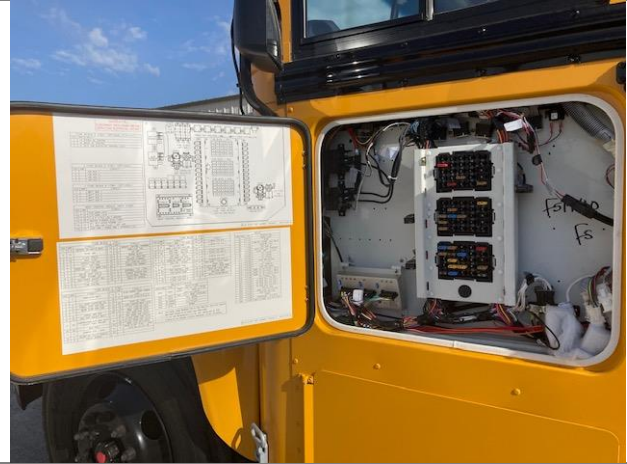
### Electrical wiring system

- Color coded and numbered SXL wires ;
- Completely loomed color coded continuous wiring harness isolated from the chassis system;
- Body wiring fixed inside above windows; *(protected from the elements)*
- Easy access facilitates maintenance and electrical upgrades, such as TV/DVD.
- Circuit protection fuses



### Body electrical control panel

- The body electrical control panel is located below driver's window.
- Every circuit is protected by ATO® type fuses; 80-amp relay
- Electrical diagram supplied at delivery.



### Industrial Rear Wheel "Fenderettes"



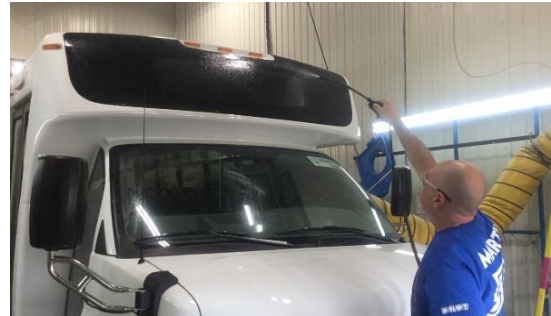
### L.E.D. lights

- Clearance, Directional and Stop lights.
- Recessed weather proof light pods (*prevents rusting of sockets*)
- Licence plate light
- Interior
- 8-way warning light system
- Lo-profile LED strobe light



### Water infiltration test

- A positive pressure water infiltration test shall be performed to ensure proper water seal of joints, fasteners, and gaskets found on the vehicle.



## OTHER EQUIPMENT

### Windows

- Windows fixed on windowsills with integrated retention lip and evacuation angle to evacuate water to the outside of the body;
- Drip rails above windows
- 27 in. / 35 in;



**Emergency package (FEDERAL SPECS) includes:**

- Triangles (3)
- Body Fluid Kit
- First Aid Kit
- Fire Extinguisher, 5lb.



- Exhaust pipe relocated to rear of bus
- Front and rear mud flaps
- Driver's heater of 92,000 BTU
- Stepwell heater of 50,000 BTU
- Passenger heaters of BTU
  - w. shut-off valve
- Back-up camera with screen in mirror
- Back-up alarm 112dbl

**Extra Equipment:**

*\*item is included if box is checked*

Parcel Racks

Full Bus Length Acoustic Headlining

Underbody Outside Storage

Driver's Overhead Locking Storage

No-Child Left Behind Monitor System

Front Bumper Crossing Arm



**Customer Requested Specs Include:**

- 
- 
- 
- 
- 
-

# Blue Bird Vision

## PASSENGER

CHECK HERE FOR LEASE

BODY, OPTIONS AND CHASSIS \$ \_\_\_\_\_

LESS TRADE-IN ALLOWANCE \$ \_\_\_\_\_

DELIVERY CHARGE \$ \_\_\_\_\_

**YOUR NET PURCHASE PRICE \$ \_\_\_\_\_ - pricing valid for 60 days**

**\*DELIVERY CHARGE F.O.B. CUSTOMER LOCATION\* \$250.00**

PREPAYMENT OPTIONS:

100%: \$ \_\_\_\_\_ Prepayment Discount, Deduct..... < \$ \_\_\_\_\_ >

Please check box & sign here if you would like to take advantage of our pre-pay discount.

Sign Here: \_\_\_\_\_

OPTIONAL EQUIPMENT:

1)	_____	\$
2)	_____	\$
3)	_____	\$
4)	_____	\$
5)	_____	\$
6)	_____	\$

ACCEPTANCE FOR (School or Organization):

BY: **Tyler Cox**

DATE: \_\_\_\_\_

SIGNATURE: \_\_\_\_\_

PRINTED: \_\_\_\_\_

TITLE: \_\_\_\_\_

DATE: \_\_\_\_\_

**ESTIMATED COMPLETION DATE: 90-120 DAYS**  
**ADD 30 EXTRA DAYS FOR AIR CONDITIONING**



9/29/2021

WEEPING WATER PUBLIC SCHOOL, NE  
Douglas Jorn  
(402)297-5569  
[djorn@weepingwaterps.org](mailto:djorn@weepingwaterps.org)

Dear Mr. Jorn,

Thank you for your interest in a top quality bus for your school. I am confident that you will find this equipment to be a very good value with many years of reliable service. This bus is subject to prior sale.

The following is available for your review:

2023 ICCE 71 Passenger, B6.7 Cummins, Hydraulic Brake, Allison 2500 Automatic Transmission, 5/8" Marine Grade Plywood Subfloor, High Back Seats, Fire Block Upholstery, Full Acoustic Headliner, 78" Headroom, Column Steering Tilt/Telescope, Cruise Control, Back Up Alarm, Strobing LED Lights Stop Arm, (2) Roof Hatches, (4) Push Out Windows, 12" Window Drop, Heaters (Driver/Stepwell/Rear), Engine Block Heater, Heated Exterior Mirror, Defroster, Defog Fan, 100 Gallon Fuel Tank, Noise Suppression Switch, LED Strobe Light, White Roof, Rub Rails Black, Front/Rear Tow Hooks, Front/Rear Mud Flaps, Hooded 8 Lamp Warning System, LED Package, Radio AM/FM/USB Port W/PA System, 7 YR/Unlimited Miles Allison Transmission Warranty, New Bus Warranty. Build Time 120-150 Days

FOB Weeping Water, NE.....\$93,932

All Buses Go Through Our Shop Include:

- Pre-Delivery Inspection
- Lettering on Both Sides of Bus

Upon your decision to purchase the bus, we ask for a PO to secure your interest. If you have any questions, feel free to call me at 1-800-475-1439 ext. 306, ext. 311.

Sincerely,

***Rayveen Waters/Ben Henshaw***  
National Bus Sales



# GOVERNMENT CAPITAL CORPORATION

October 5, 2021

## Weeping Water Public Schools

204 W O Street  
Weeping Water, NE 68463

Thank you for the opportunity to present proposed financing for Weeping Water Public Schools. I am submitting for your review the following proposed structure:

ISSUER:	Weeping Water Public Schools, Nebraska	
FINANCING STRUCTURE:	Tax Exempt Structure w/ \$1.00 purchase	
<b>EQUIPMENT COST:</b>	<b>\$ 70,695</b>	
TERM:	3 Annual Payments	5 Annual Payments
INTEREST RATE:	3.595%	3.595%
PAYMENT AMOUNT:	\$ 25,141.43	\$ 15,614.20
PAYMENTS BEGINNING:	5 months from signing, annually thereafter	

---

<b>EQUIPMENT COST:</b>	<b>\$ 93,932</b>	
TERM:	3 Annual Payments	5 Annual Payments
INTEREST RATE:	3.595%	3.595%
PAYMENT AMOUNT:	\$ 33,405.26	\$ 20,746.49
PAYMENTS BEGINNING:	5 months from signing, annually thereafter	

The above payment amount includes all applicable fees expressed as 0.015. These costs can include documentation fees, legal fees, issuance expenses, etc. The above proposal is subject to audit analysis, assumes bank qualification and mutually acceptable documentation. The terms outlined herein are subject to change and rates are valid for fourteen (14) days from the date of this proposal. If funding does not occur within this time period, rates will be indexed to markets at such time.

Our finance programs are flexible and as always, my job is to make sure you have the best possible experience every time you interact with our brand. We're always open to feedback on how to make your experience better. If you have any questions regarding other payment terms, frequencies or conditions, please do not hesitate to call.

With Best Regards,

*Stephanie Cates*

Stephanie Cates  
Client Services  
CC: Tara Clawson-Cherry  
Main: 817-421-5400

*The transaction described herein is an arm's length, commercial transaction between you and Government Capital Corporation ("GCC"), in which GCC: (i) is acting solely for its own financial and other interests that may differ from yours; (ii) is not acting as your municipal advisor or financial advisor, and has no fiduciary duty to you with respect to this transaction; and (iii) is not recommending that you take an action with respect to this transaction.*

Mr. Kevin Reiman - Superintendent  
Weeping Water Public School  
204 West O  
Weeping Water, Nebraska NE 68463

Dear Mr. Reiman,

Please see the attached below your purchase pricing and lease price options. I want to thank you on behalf of Nebraska/Central Equipment, Inc. for the opportunity to supply your district's upcoming transportation needs.

Option 1\*:

Collateral:	One (1) 2022 Micro Bird G5
Lease Term:	5-years
Annual Payments:	\$10,540.00 + <i>applicable tax, if any</i>
Purchase Price:	\$68,795.00

Option 2\*:

Collateral:	One (1) 2023 Blue Bird Vision – <i>Diesel Powered</i>
Lease Term:	5-years
Annual Payments:	\$14,186.00 + <i>applicable tax, if any</i>
Purchase Price:	\$98,899.00

Option 3\*:

Collateral:	One (1) 202 Blue Bird Vision – <i>Gasoline Powered</i>
Lease Term:	5-years
Annual Payments:	\$13,904.00 + <i>applicable tax, if any</i>
Purchase Price:	\$95,895.00

**\*Subject to credit approval**

Many Thanks,

Date: \_\_\_\_\_

Name: \_\_\_\_\_

Title: \_\_\_\_\_

Tyler Cox  
General Manager  
Nebraska/Central Equipment, Inc.

Signature: \_\_\_\_\_





**2022 MODEL BLUE BIRD VISION  
14 PASSENGER**

Rev. 9-9-15

Prepared  
Especially For:

**WEeping WATER PUBLIC SCHOOL**

By: TYLER COX

Date: 10/12/2021



Distributed And Serviced  
By:  
**Nebraska/Central Equipment, Inc.**  
112 Apollo Avenue  
P O Box 3  
Alda, Nebraska 68810  
308-381-2473

## 2022 MICROBIRD G5 **EXCEEDING NEBRASKA MINIMUM STANDARDS**

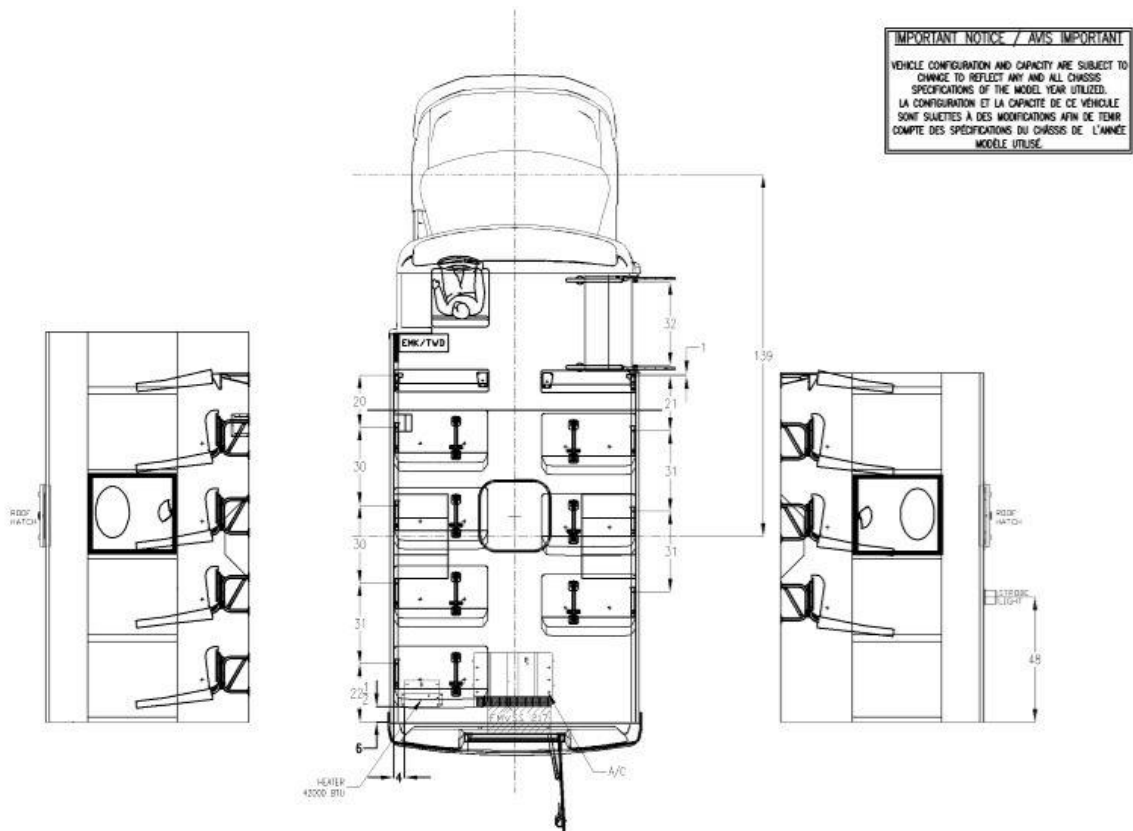
QUANTITY	MODEL NUMBER	WHEELBASE	HEAD ROOM		NUMBER ROWS		CAPACITY
<b>ONE (1)</b>	<b>G5</b>	<b>139"</b>	<b>76"</b>		<b>4</b>		<b>14 STUDENT</b>
<b>~ OVERVIEW ~</b>							
ENGINE:	<b>6.0L VORTEC GAS V8 GM ENGINE</b>						
TRANSMISSION:	6 SPEED AUTOMATIC TRANSMISSION						
AXLES:	FRONT -	4,300 LBS					
	REAR -	6,084 LBS					
BRAKES:	HYDRAULIC BRAKES						
ALTERNATOR:	220 AMPS						
FUEL TANK:	<b>33 GALLON CAPACITY</b>						
BATTERIES:	<b>DUAL ISOLATED BATTERY</b>						
WHEELS:	DUAL REAR WHEELS						
TIRES:	LT225/75R16E						
<b>FEATURES</b>							

### **BODY FEATURES:**

- 32 INCH HEATED ENTRANCE DOOR
- ENTRANCE GRAB RAIL
- GLOVE COMPARTMENT
- 6X16 INCH INTERIOR MIRROR
- DOME LIGHTS
- ALL LED EXTERIOR LIGHTING
- TINTED WINDOWS
- EXTERIOR PAINTED NATIONAL SCHOOL BUS YELLOW
- 4 SPEAKERS IN ROOF
- BACKING SAFETY HORN
- BODY FLUID KIT
- FIRST AID KIT
- FIRE EXTINGUISHER
- MUD FLAPS
- SEAT BELT CUTTER
- ACOUSTIC CEILING
- BACK-UP CAMERA W/ SCREEN IN MIRROR
- HEATED AND REMOTE CONTROL EXTERIOR MIRRORS

## **CHASSIS FEATURES:**

- 4 WHEEL DISC BRAKES WITH ABS
- DRIVER'S AIR BAG
- TILT STEERING
- SPEED CONTROL
- FRONT DASH AIR
- DAYTIME RUNNING LAMPS
- 33 GALLON FUEL TANK
- 6-SPEED TRANSMISSION
- DUAL BATTERIES – EACH 770 AMPS
- 220 AMP ALTERNATOR
- POWER STEERING
- DUAL REAR WHEELS
- RADIO AM/FM/MP3
- BLUE C.E. WHITE SEATS W/ FIREBLOCK
- HIGH BACK BUCKET DRIVER'S SEAT



BODY, OPTIONS AND CHASSIS	\$ 68,795.00
LESS TRADE-IN ALLOWANCE	\$ N/A

**YOUR NET PURCHASE PRICE \$ 68,795.00**

**\*DELIVERY CHARGE F.O.B. CUSTOMER LOCATION\* \$250.00**

**PREPAYMENT OPTIONS:**

100%: \$ 68,795.00 Prepayment Discount, Deduct..... < \$ 600.00 >

Please check box & sign here if you'd like to take advantage of our pre-pay discount.

Sign Here: \_\_\_\_\_

**OPTIONAL EQUIPMENT:**

- 1) >
- 2) >
- 3) >
- 4) >
- 5) >
- 6) >

<p>ACCEPTANCE FOR (School or Organization):</p>   <p>BY: _____</p> <p>TITLE: _____</p> <p>DATE: _____</p>	<p>BY: Tyler Cox</p> <hr/> <p>DATE: 10/12/2021</p> <hr/> <p><b>ESTIMATED COMPLETION DATE: 90-120 DAYS</b>  <b>ADD 30 EXTRA DAYS FOR AIR CONDITIONING</b></p>
--	--

ALL RESPONSIBILITIES OF OWNERSHIP AND LIABILITY ARE TRANSFERRED TO CUSTOMER AT DELIVERY ~ TERMS: NET CASH ON DELIVERY



# GOVERNMENT CAPITAL CORPORATION

October 5, 2021

## Weeping Water Public Schools

204 W O Street  
Weeping Water, NE 68463

Thank you for the opportunity to present proposed financing for Weeping Water Public Schools. I am submitting for your review the following proposed structure:

ISSUER:	Weeping Water Public Schools, Nebraska	
FINANCING STRUCTURE:	Tax Exempt Structure w/ \$1.00 purchase	
<b>EQUIPMENT COST:</b>	<b>\$ 70,695</b>	
TERM:	3 Annual Payments	5 Annual Payments
INTEREST RATE:	3.595%	3.595%
PAYMENT AMOUNT:	\$ 25,141.43	\$ 15,614.20
PAYMENTS BEGINNING:	5 months from signing, annually thereafter	

---

<b>EQUIPMENT COST:</b>	<b>\$ 93,932</b>	
TERM:	3 Annual Payments	5 Annual Payments
INTEREST RATE:	3.595%	3.595%
PAYMENT AMOUNT:	\$ 33,405.26	\$ 20,746.49
PAYMENTS BEGINNING:	5 months from signing, annually thereafter	

The above payment amount includes all applicable fees expressed as 0.015. These costs can include documentation fees, legal fees, issuance expenses, etc. The above proposal is subject to audit analysis, assumes bank qualification and mutually acceptable documentation. The terms outlined herein are subject to change and rates are valid for fourteen (14) days from the date of this proposal. If funding does not occur within this time period, rates will be indexed to markets at such time.

Our finance programs are flexible and as always, my job is to make sure you have the best possible experience every time you interact with our brand. We're always open to feedback on how to make your experience better. If you have any questions regarding other payment terms, frequencies or conditions, please do not hesitate to call.

With Best Regards,

*Stephanie Cates*

Stephanie Cates  
Client Services  
CC: Tara Clawson-Cherry  
Main: 817-421-5400

*The transaction described herein is an arm's length, commercial transaction between you and Government Capital Corporation ("GCC"), in which GCC: (i) is acting solely for its own financial and other interests that may differ from yours; (ii) is not acting as your municipal advisor or financial advisor, and has no fiduciary duty to you with respect to this transaction; and (iii) is not recommending that you take an action with respect to this transaction.*



9/29/2021

WEeping WATER PUBLIC SCHOOL, NE  
Douglas Jorn  
(402)297-5569  
[djorn@weepingwaterps.org](mailto:djorn@weepingwaterps.org)

Dear Mr. Jorn,

Thank you for your interest in a top quality bus for your school. I am confident that you will find this equipment to be a very good value with many years of reliable service. This bus is subject to prior sale.

The following is available for your review:

2022 Chevy Collins DE500, 14 Passenger, 6.0L Gas, Hydraulic Brake, DRW, AC, 1/2" Plywood Subfloor, High Back Seats, Seat Belts, Fire Block Upholstery, 76" Headroom, Back Up Alarm, LED Strobe Light Stop Arm, Child Alert System, Back Up Camera W/Monitor, Roof Hatch, Push Out Windows, Heater, Defroster, Exterior Heated Mirror, Strobe Light, Rear Tow Eyes, Rear Mud Flaps, Equipment Cage, Hooded 8 Lamp Warning System, New Bus Warranty. Build Time February/March 2022

FOB Weeping Water, NE..... \$70,695

All Buses Go Through Our Shop Include:

- Pre-Delivery Inspection
- Lettering on Both Sides of Bus

Upon your decision to purchase the bus, we ask for a PO to secure your interest. If you have any questions, feel free to call me at 1-800-475-1439 ext. 306, ext. 311.

Sincerely,

***Rayveen Waters/Ben Henshaw***  
National Bus Sales