

*Board of Education  
Mesa County Valley School District 51*

*Agenda*

*November 18, 2025*

*Board of Education Business Meeting*

**VISION STATEMENT**

Engage, equip, and empower each and every student, each and every day.

**DISTRICT MISSION**

D51 engages our community, families and staff to deliver individualized, collaborative and challenging educational experiences to prepare each and every student for their brightest future.

**BOARD PURPOSE**

Providing effective and ethical governance – representative of community – to support continuous success for all students.

**ESSENTIAL BOARD ROLES**

Guide the District through the superintendent  
Engage constituents Ensure alignment of resources and structure  
Measure effectiveness Model excellence

**BOARD'S CORE, DRIVING VALUES**

Continuous student success, respect for all, student centered, integrity, engaged communication, continuous improvement, fiscal responsibility, accountability, strategically proactive, team effectiveness

**BOARD MEMBERS**

District A – Mr. José Luis Chávez District  
B – Mrs. Barb Evanson  
District C – Mrs. Andrea Haitz, President  
District D – Mr. Will Jones, Vice  
President District E – Ms. Angela Lema,  
Secretary

**SUPERINTENDENT**

Board of Education Business Meeting

5:00 PM

1. Call to Order/Pledge of Allegiance/Moment of Silence/Roll Call
2. Agenda Approval
3. Meeting Minutes and Summary Approval
- 3.A. October 7, 2025 Board Work Session Minutes
- 3.B. October 21, 2025 Board Business Meeting Minutes
4. Recognitions
- 4.A. Native American Heritage Month
- 4.B. CHSAA Hall of Fame Inductee
- 4.C. Southwest League Conference Softball Player of the Year
5. Board Reports
- 5.A. Good Things
- 5.B. Committee/Activity Updates
6. D51 Happenings and Celebrations
7. Superintendent's Report
- 7.A. Legislative Update
- 7.B. Boundary Presentation
- 7.C. New Emerson School Transition Proposal
8. Audience Comments
9. Consent Agenda
- 9.A. Licensed and Administrative Personnel Actions
- 9.B. Gifts
- 9.C. Grants
10. Business Items
- 10.A. Resolution for New Boundaries
- 10.B. Renaming of Facility
11. Board Announcements
12. Future Meetings
- 12.A. Organizational Meeting TBA
- 12.B. December 9, 2025, Harry Butler Board Room, 5:00 p.m., Board Work Session
- 12.C. December 11 - 13, 2025, Colorado Springs, CO, Colorado Association of School Boards Convention
- 12.D. December 16, 2025, Harry Butler Board Room, 5:00 p.m., Board Business Meeting
13. Adjournment
14. Expulsion Report as of October 31, 2025

**PUBLIC PARTICIPATION AT BOARD MEETINGS; MEETING RULES**

Adopted: September 14, 2021

Revised: November 19, 2024

---

The Board desires to hear the views of citizens of the District and welcomes public comments at business meetings. Public comments at work sessions or special meetings will not be allowed unless otherwise delineated on the meeting agenda. To ensure the safety, security, and orderly conduct at Board meetings all participants must adhere to these rules and any additional instructions provided by security personnel or meeting facilitators.

**Eligibility and priority to address the Board:** To ensure the students are prioritized and heard, the Board will allow students to speak first during the public comment portion of the meetings. Students wishing to address the Board must sign up and will be called in the order of registration before other community members.

**Process/Procedure:**

1. Individuals wishing to address the Board must sign up and will be called in the order of registration.
2. Comments will be limited to agenda item(s).
3. The public comment portion will be limited to 60 minutes unless the Board votes to extend the time. If additional time is approved, it will be at the discretion of the Board and based on the circumstances of the meeting.
4. Each speaker will be allotted up to three minutes to address the Board during public comment. If there are a large number of individuals signed up to speak, the Board reserves the right to reduce the time per speaker to ensure that as many voices are heard within the allotted comment period. If time constraints prevent all individuals from speaking during the public comment period, the Board encourages those unable to address the Board in person to submit their input via emails, written letters, or other formats. All submitted comments will be reviewed by the Board.
5. Speakers should not repeat the same message shared by others. If a speaker's point has already been addressed, comment briefly in support of previous comments and provide any other unique insights.

**Prohibited Items:** For security purposes, attendees may not bring bags into the meeting room. This includes, but is not limited to: backpacks, purses larger than a clutch, and tote bags. Exceptions will be made for medically necessary items or diaper bags, which are subject to inspection. Employees who are required to attend and work during the meeting are exempt from the bag policy but may be subject to standard security procedures.

**Orderly Conduct:**

1. All speakers and attendees are expected to maintain respectful and proper decorum during Board meetings.
2. Comments shall be directed to the Board as a whole and not an individual member, staff, or other attendees.
3. Personal attacks, threats, shouting, cheering, snapping, and other distractions or disruptive behavior, will not be tolerated.
4. Clapping after a comment may be allowed unless it is disrespectful or disrupts the flow of the meeting. Attendees are encouraged to keep expressions of support by clapping brief. If attendees disregard this expectation, the Board may temporarily pause the meeting to restore order or remove individuals causing the disruptions.
5. All comments must be age-appropriate, to include kindergarten through twelfth grade, and suitable for a school setting. Speakers are expected to use language and share content that is respectful and appropriate for all ages.
6. Comments containing profanity, vulgarity, or otherwise inappropriate material will not be permitted.
7. Attendees may not bring signs, banners, props, or other similar items/materials into the meeting. Any individual wishing to display any of the items referenced, or demonstrate, should do so in appropriate spaces outside of the meeting room, in compliance with District policies.
8. Media representatives wishing to record the Board meeting will be assigned a designated location to ensure their activities do not disrupt the proceedings or obstruct the view of attendees. All recording equipment must remain within the assigned area for the duration of the meeting.

**Enforcement of Meeting Rules:** Individuals who fail to follow the established rules for public comments or meeting decorum will receive a warning. If the disruptive behavior continues after the warning, the individual may be removed from the meeting. Repeated violations may result in a ban from attending future meetings as determined by the Board.

**Proclamation:  
Native American Heritage Month**

Board of Education Resolution: 25/26: 23

Presented: November 18, 2025

---

WHEREAS, Native American Heritage Month is an essential opportunity to recognize, celebrate, and reflect upon the profound history, vibrant culture, enduring traditions, and invaluable contributions of Native Americans, who continue to play a vital role in shaping our nation's heritage and future; and

WHEREAS, the Native American community continues to enrich our local, state, and national identity through their ongoing achievements and leadership across education, art, science, public service, agriculture, environmental stewardship, and countless other fields; and

WHEREAS, District 51 remains committed to fostering a culture of mutual respect, belonging, and understanding by recognizing the unique perspectives and valuable contributions of Native American students, families, and staff within our schools and broader community; and

WHEREAS, this month highlights the importance of education in preserving and sharing Native American histories, languages, and cultures to ensure their stories are understood and carried forward by all future generations;

THEREFORE, BE IT RESOLVED, The District 51 Board of Education hereby proudly proclaims November 2025 as Native American Heritage Month, and encourages our community to honor Native American history and culture while reaffirming our commitment to educating students about their contributions and legacy.

Board of Education Resolution: 25/26: 24

Presented: November 18, 2025

---

Will Tena Preuss please join me at the front of the room?

Tena Preuss, our District 51 Spirit Director, has been selected as one of seven individuals named to the CHSAA Hall of Fame Class of 2026, a milestone that reflects more than four decades of service to the dance, cheer and spirit community across Colorado.

Since 1991, Tena has served as CHSAA's Head Technical Judge and State Rules Interpreter for dance, helping shape the state's Spirit Championships and advancing the standard of the sport. She is also the owner and director of Express All Star Cheer & Dance Academy, a nationally certified coach, judge, and choreographer whose athletes have earned hundreds of national titles. Her work has taken her everywhere from the Macy's Thanksgiving Day Parade to the Olympic Torch Relay.

Here in D51, Tena has been a steady leader, advocating for spirit athletes, supporting coaches, and elevating all four comprehensive high school spirit programs with her vision, compassion, and high expectations.

Off the mat, Tena is known for her genuine kindness, her willingness to lift up others, and her passion for building community. She treats every student and colleague with respect, invests time in developing talent and character, and remains committed to the value that spirit activities create opportunities for growth, confidence and leadership.

The Board of Education and Superintendent Dr. Hill would like to express our gratitude for your many years of service, Tena, and congratulate you on this well-deserved recognition. This Hall of Fame induction is a testament not only to your achievements, but to the positive influence you have had on student-athletes, coaches and the spirit culture across Colorado and here in District 51.

Board of Education Resolution: 25/26: 25

Presented: November 18, 2025

---

Will Alexis Walpole please join me at the front of the room?

Alexis, a senior at Grand Junction High School, has excelled as both a third baseman and pitcher for the Tigers' varsity softball team and was recently named the 2025 Southwest League Softball Player of the Year, an honor that reflects not only her impressive athletic ability, but also her leadership, character, and commitment to her team and school community.

This season, Alexis posted standout numbers, including a .482 batting average, 9 home runs, 31 RBIs, a .965 fielding percentage, and 23 stolen bases. She also led her team in on-base percentage, slugging, and total hits.

But beyond her athletic achievements, Alexis is known for her strong work ethic, drive, and humble leadership. Coaches describe her as someone who elevates others, always encouraging teammates, supporting younger players, and consistently putting in the extra time to improve. She is respected by peers and staff for her kindness, reliability, and genuine care for those around her.

Whether on the field, in the dugout, or representing her school, Alexis models the qualities we hope to see in every student-athlete: discipline, respect, teamwork, and perseverance.

The Board of Education and Superintendent Dr. Hill would like to recognize Alexis on this amazing accomplishment and commend her dedication to her team and the sport. Congratulations on being named the 2025 Southwest League Softball Player of the Year. We wish you the best on your next endeavors!

# Grand Junction High School / Central High School Proposed Boundary Changes



11/18/25

# Situation

- D-51 is proposing a boundary change between GJHS and CHS to balance enrollment.
- Reduce enrollment at GJHS by 300 students, increase enrollment at CHS to avoid chronic imbalance between the two schools.
- Balance enrollment and course offering potential at both schools.
- The 29 Rd. bridge eases access to CHS for students south of the river.
- The proposed change would be phased-in one grade at a time starting with 9<sup>th</sup> grade next year and adding a grade each subsequent year until all four grades transition.
- Siblings in the Change Area – Current middle school-aged siblings will be able to attend GJHS following their older siblings if they are currently in 6<sup>th</sup>, 7<sup>th</sup> or 8<sup>th</sup> grade.

# Improvements Planned for CHS - Blythe Architecture Planning Team

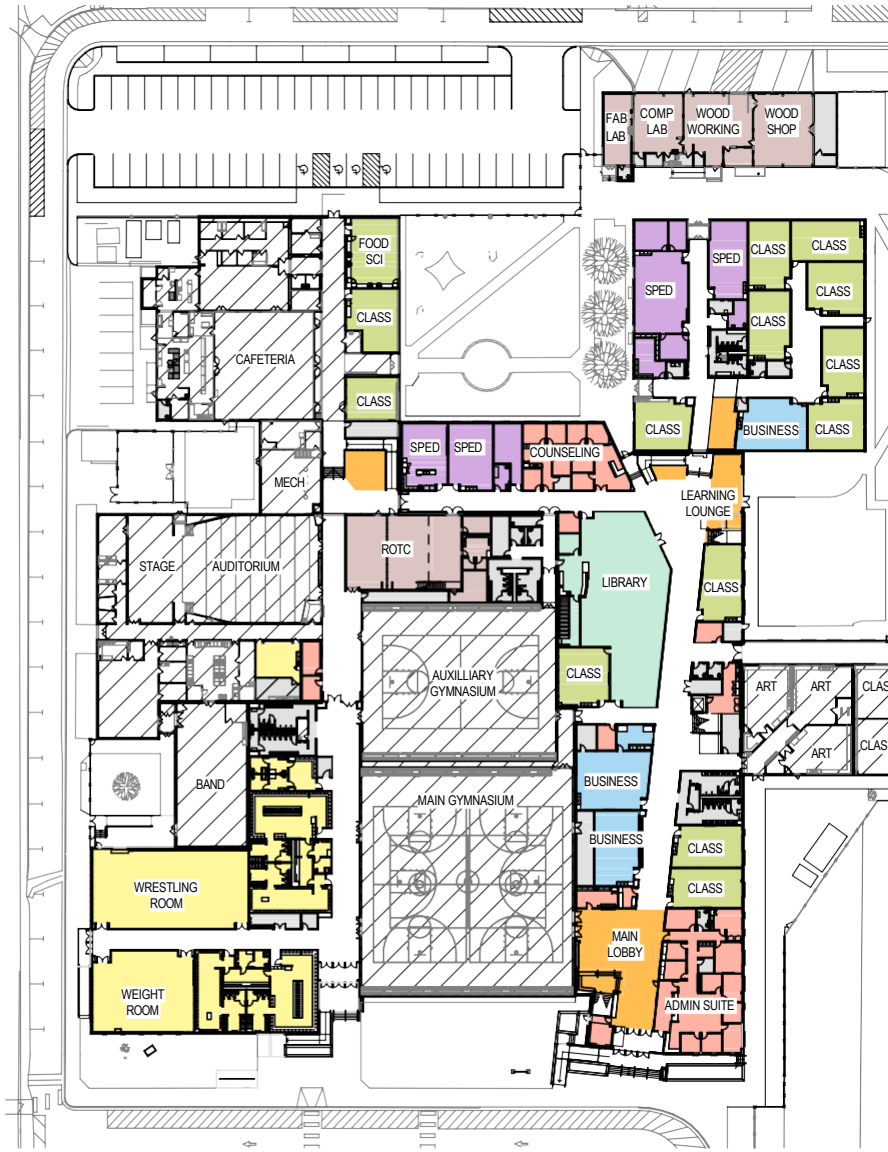


# Improvements Planned for CHS - Blythe Architecture Planning Team

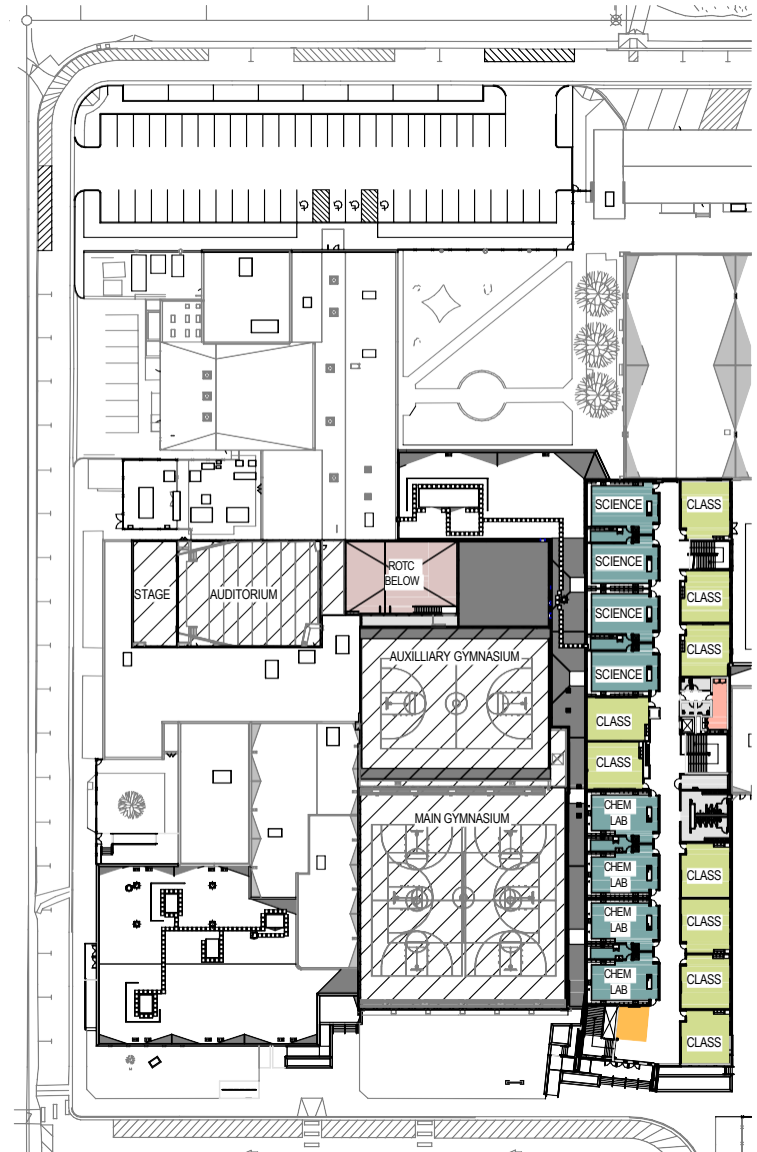


# Improvements Planned for CHS - Blythe Architecture Planning Team

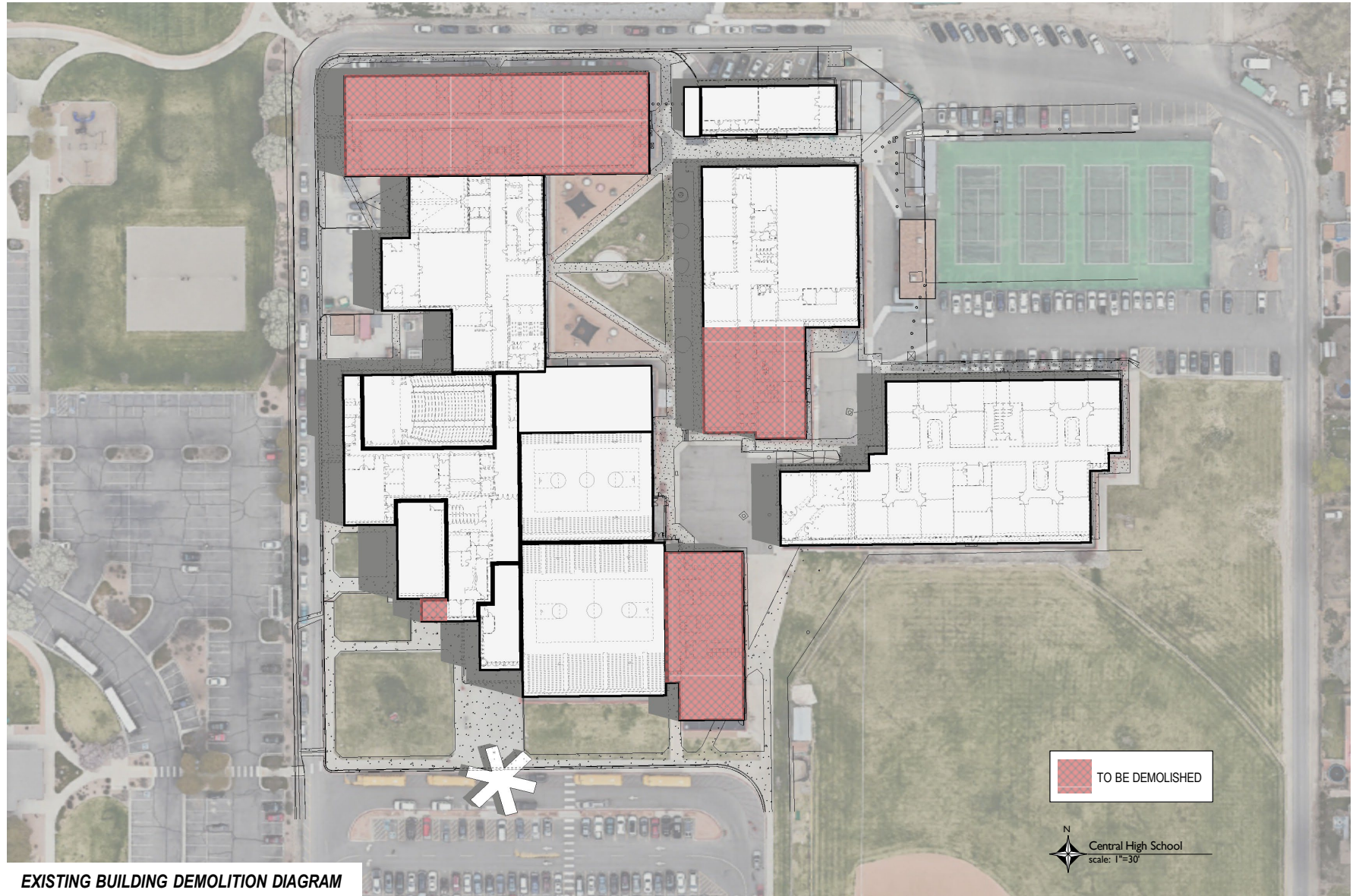
## Level 1



## Level 2



# CHS Improvements (Continued)

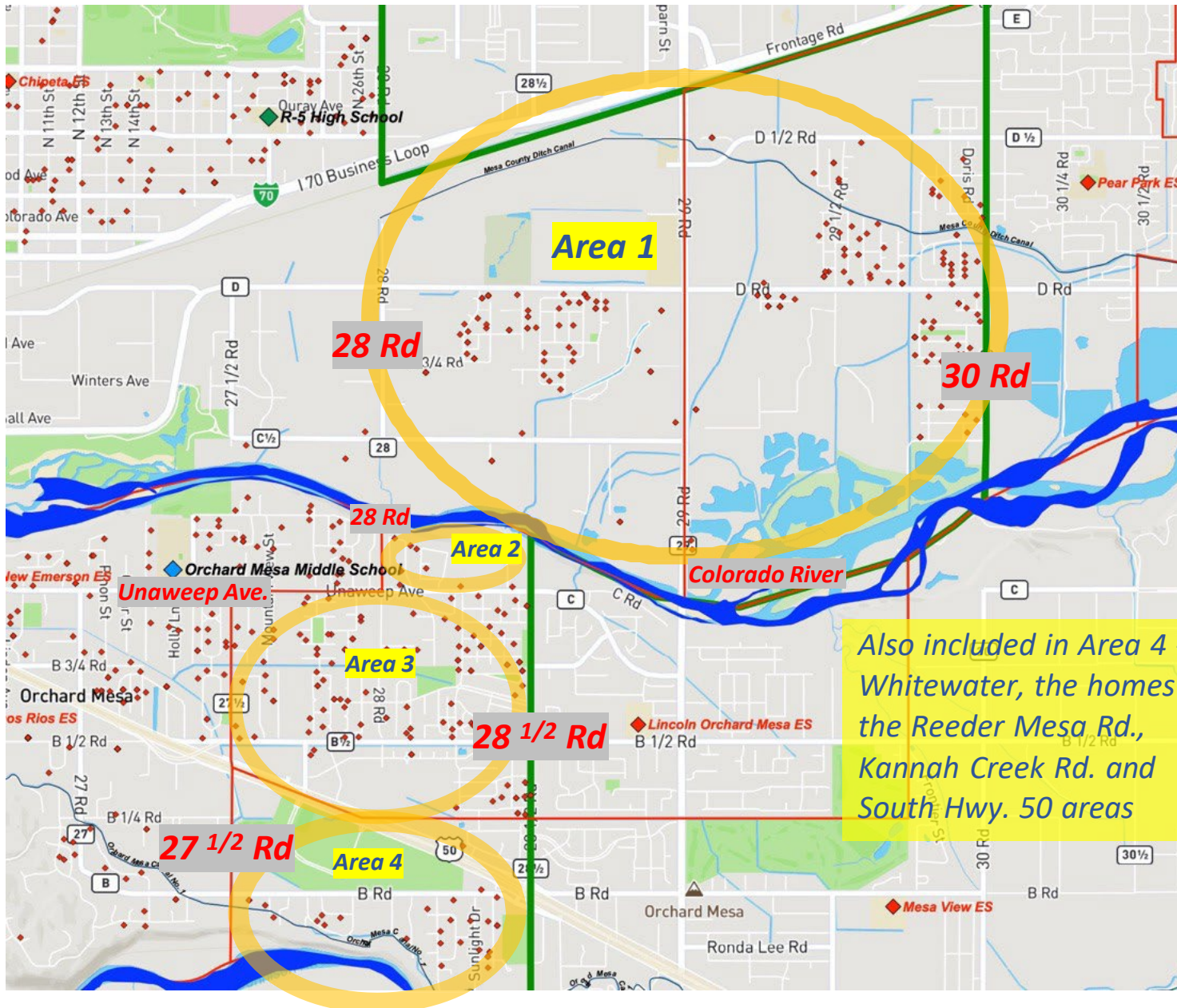


EXISTING BUILDING DEMOLITION DIAGRAM

# Program of Improvements and Timeline

- Program of Improvements
  - Connecting existing buildings for increased security and accessibility.
  - Two-story classroom addition
  - New entrance and building image
  - New / updated athletics wing
  - New space layout and renovation in select areas
- Timeline
  - Bid documents complete: February, 2026
  - Construction begins: March, 2026
  - Athletics addition / Renovation complete: Dec, 2026
  - All construction complete: August, 2028

# GJHS / CHS Boundary – Areas Proposed for Movement



# Areas Proposed for Movement from GJHS to CHS

- **Area 1** – Business I-70 on the north, the Colorado River on the south, 28 Rd. on the west and 30 Rd. on the east. This area includes portions of the Pear Park and Chipeta elementary attendance areas.
- **Area 2** – The Colorado River on the north, UnawEEP Ave. on the south, 28 ½ Rd. on the east and 28 Rd. on the west. This area is the western portion of the Lincoln Orchard Mesa elementary attendance areas.

# Areas Proposed for Movement from GJHS to CHS

- **Area 3** - UnawEEP Ave. on the north, the alignment of B  $\frac{1}{4}$  Rd. on the south (the north edge of the Fairgrounds), 28  $\frac{1}{2}$  Rd. on the east and 27  $\frac{1}{2}$  Rd. on the west. This area is the western portion of the Lincoln Orchard Mesa elementary attendance area.
- **Area 4** – The alignment of B  $\frac{1}{4}$  Rd. on the north (the north edge of the Fairgrounds), the southern district boundary on the south, 28  $\frac{1}{2}$  Rd. on the east and 27  $\frac{1}{2}$  Rd. on the west. Also included is Whitewater and the homes in the Reeder Mesa Rd., Kannah Creek Rd. and South Hwy. 50 areas. This area is the western portion of the Mesa View elementary attendance area.

# Boundary Change Meetings: Communications Timeline

**We used multiple methods to ensure families received clear, timely information about the Community Meetings being held to discuss proposed boundary changes.**

- **Email Notifications/Reminder** were sent to all BMS, OMMS, CHS, GJHS (4,625) families and staff on the following dates:
  - **Initial Email:** Sent October 28
  - **Reminder Prior to 1st Meeting:** Sent November 5
  - **Reminder Prior to Virtual Meeting:** Sent November 13
- **Media Coverage** including interviews and press statements
  - KREX TV - [Potential New Boundaries Coming to District 51](#)
  - Daily Sentinel - [D51 Exploring GJHS, CHS Boundary Changes; First Community Meeting is Tonight](#)
- **Social Media Posts**
  - Posted on Facebook, Instagram, Twitter, D51 Stories/Reels

# Questions, Comments and Written Comments



*Please point your  
camera app at this QR  
code to launch a form  
for written  
comments. Thanks!*

*Scan Me*

---



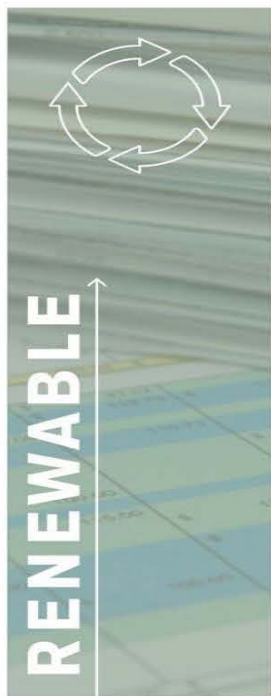
# New Emerson School Transition Proposal

Building the Future: A New Home For New Emerson

# MASTER PLAN GUIDING PRINCIPLES



Create a clear, attainable plan that is accessible to and engages every community and stakeholder group



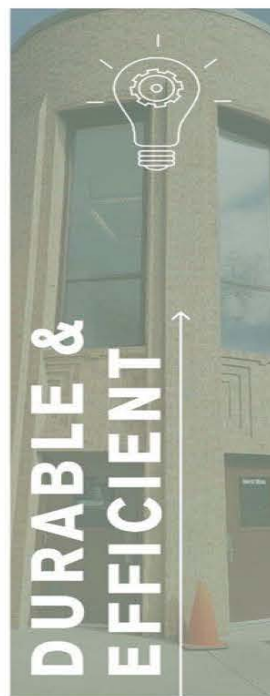
Produce a realistic, financially feasible strategy that can be updated on a regular schedule



Improve communication, control access, and enhance supervision throughout school facilities



Develop flexible spaces to support next generation learning, changing enrollments, and evolving career paths and skills



Prioritize decisions leading to long-lasting, energy-conscious facilities



Promote community involvement with safe access and afterschool use opportunities

# Elementary Declining Enrollment Committee



# EDEC Pathways

CURRENT DECLINING STUDENT ENROLLMENT NEGATIVELY IMPACTS D51 RESOURCES AND INFRASTRUCTURE. THE IMPACT LIMITS D51'S ABILITY TO ASSEMBLE THE CRITICAL RESOURCES AND INFRASTRUCTURE TO ADEQUATELY SUPPORT & IMPLEMENT THE STRATEGIC PLAN. WE DESIRE TO REALLOCATE RESOURCES TO CREATE SAFE, SUCCESSFUL CLASSROOMS FOR STUDENTS AND STAFF.

## Pathway 1

### **SCHOOL CLOSURE & CONSOLIDATION:**

School closure & consolidation was the most supported Pathway, with over 80% of voting members ranking it as the most viable option.

## Pathway 2

### **MILL LEVY:**

The committee heavily supported the district exploring the potential for additional mill levy overrides to help address funding shortages.

## Pathway 3

### **PROMOTE AND INCREASE ROBUST & ALIGNED OPTIONS:**

The committee supported exploring ways to highlight the different options the district offers while exploring new options to attract and retain families in D51.

## Pathway 4

### **SUBSIDIZE & PROVIDE FLEXIBLE SUPPORT THROUGH POSSIBLE INCREASES IN STATE PER PUPIL FUNDING:**

The committee determined the need to possibly use potential future increases in funding from the state to subsidize unfunded positions in the short term.

## Pathway 5

### **ONGOING EVALUATION OF CENTRAL OFFICE STAFFING AND PROGRAMS:**

The committee recommended the district continue to evaluate central office staffing and programs to identify the level of return on investment and additional savings where possible.

# EDEC Closure Criteria

In March, D51 engaged with A&M to create a decision model that would apply the 6 closure criteria identified by the EDEC through a formula. Based on the EDEC criteria, and engagement with D51 leadership, A&M created data-informed methodologies to score elementary schools comparatively utilizing the EDEC's 6 consolidation factors and designate weights.

	Building Adequacy	Transportation / Proximity	Low Enrollment	Logic of Future Boundaries	School Performance	Geographic Future Growth
<b>EDEC Points Allocation</b>	45.3	20.6	11.6	8.7	7.6	6.4
<b>Methodology</b>	Facility composite score	Measure of closure impact on transportation distance	Facilities utilization today	Analysis of open seats within 2 miles of each school (present + future)	Academic achievement and growth across multiple assessments	Projections of campus enrollment change over 5 years
<b>Source of Data for Analysis</b>	2024 Facilities Condition Assessment	Student and School Location Data	October Count	Point-to-point distance and capacity analysis	SPF, Math, Literature Scores Since 2019	5-year Demographer projections

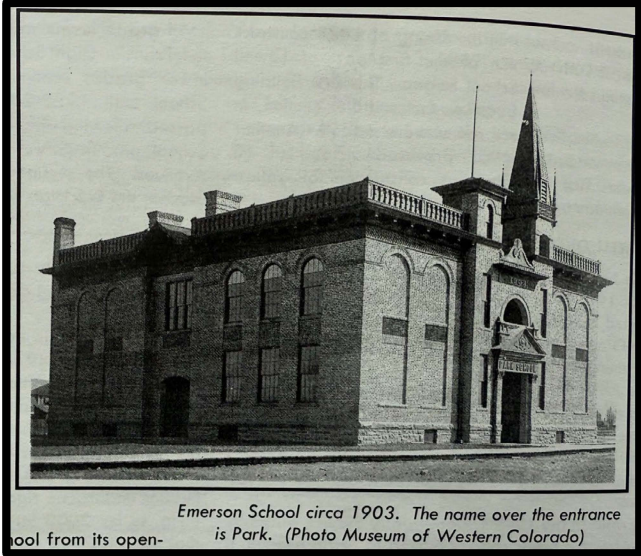
The combination of scores across each factor is used to calculate a total score between 0 and 100.2, and create a ranked list which prioritizes schools for consolidation consideration.

# Building Adequacy - 92% Said Top Criteria

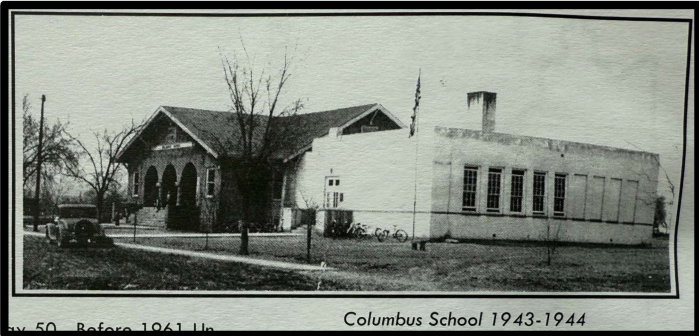
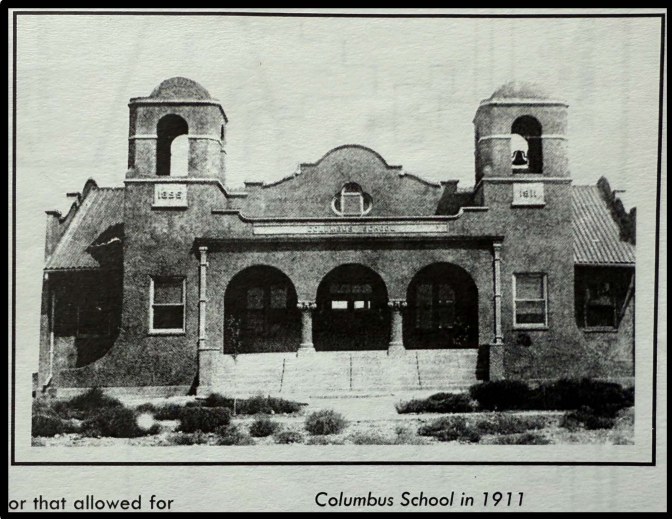
## EDEC Feedback:

- Student physical safety is paramount
- Safety and viability for students
- We need to have buildings that can last long-term and not become a financial black hole. Also, we need the buildings to be safe.
- Must be considered
- I feel like this is very important, especially financially (longer term).
- Critical to building safety
- Safety & Learning Environment; Must consider this for fiscal responsibility
- Keep the best condition schools with adequacy to support all programming and student safety/accommodations.
- We need to look at the condition of the school and cost.
- Buildings that are poorly designed for current goals, require money in upcoming maintenance, and are or aren't safe should be considered either way.
- Ensure that all students can be accommodated in the building to be safe and have a positive learning environment. While also ensuring longevity of the school.

# Emerson Building



# Columbus Building



# Why We're Moving: The Building's Current Condition

**Facility Score: F (22.7% – Failing) Constructed: 1949 | Last Major Renovation: 1970**

(2023 Facilities Master Plan Assessment)

- HVAC, electrical, and plumbing systems are all beyond their intended life cycle.
- No fire sprinkler system or modern life-safety protections.
- Roofs and exterior walls are leaking; parapets, flashing, and drainage have all failed.
- Severe site drainage problems water collects around foundations.
- Asphalt, sidewalks, and entry points are cracked and unsafe for long-term use.
- Significant ADA issues: restrooms, entries.
- Presence of potential asbestos-containing ceiling materials and outdated lighting.
- Overall: **High maintenance risk and safety vulnerabilities.**

## **Educational Limitations in the Space**

**Educational Adequacy Score: 65%**

*(Below functional standard for elementary learning environments)*

(2023 Facilities Master Plan Assessment)

- Small, outdated classrooms with poor acoustics and lighting.
- Few small-group or intervention spaces; SPED and project-based areas inadequate.
- Limited daylight, poor air circulation, and insufficient sound isolation.
- Preschool and kindergarten areas not ideally located or configured.
- Kitchen undersized and functionally obsolete.
- Drop-off/pick-up area causes congestion and safety concerns.

# New Emerson Facility Report

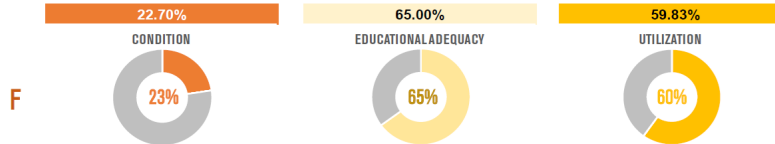
## NEW EMERSON AT COLUMBUS ELEMENTARY SCHOOL

District:	Mesa County Valley District 51
Facility:	New Emerson at Columbus Elementary
Address:	2660 Unaweep Ave.
City:	Grand Junction, CO
Site Area (AC):	3.69
Gross Building Area (SF):	23,464.00
Number of Stories:	1
Years Constructed / Renovated:	1949 / 1970
Total Replacement Value:	\$10,910,584.02
Total Condition Budget:	\$8,433,713.40
Facility Condition Score:	22.7%
Educational Adequacy Score :	65%
Enrollment:	140
Capacity:	234
Utilization (% Capacity):	60%



**Total Replacement Value:**  
\$10,910,584.02

**Total Condition Budget:**  
\$8,433,713.40



### NARRATIVE SUMMARY OF BUILDING AND SITE

New Emerson at Columbus Elementary School is in a distressed condition. The most significant physical needs include replacing HVAC equipment, adding a fire sprinkler system, site and parking lot paving, exterior windows and doors, replacing the roof, interior finishes, and plumbing fixtures. This school's educational adequacy would benefit from modernized special education and small group support spaces, improved acoustical and lighting conditions in the learning environments, better preschool classrooms and kitchen, and resolving traffic safety issues. The school enrollment is well below the ideal range of 75%-90% utilization.

# Why the Nisley campus?

**Lighting** Nisley offers bright, naturally lit classrooms with large windows and open layouts. Upcoming LED upgrades will provide clean, balanced lighting that reduces glare and enhances visibility creating a more comfortable and energizing space for teaching and learning.

**Security Systems** updated access control, interior and exterior cameras, and secured entry vestibules will enhance student and staff safety while maintaining a welcoming atmosphere.

**Infrastructure** Nisley's newer construction provides a stronger foundation with modern utilities, updated wiring, and reliable building systems.

**Life Safety – Fire Sprinkler System** a full building sprinkler system has been added, bringing the school into compliance with life-safety codes and significantly improving emergency protection for staff and students.

**Fenced Campus** a fully enclosed perimeter provides greater site security, controlled access during school hours, and a safer environment for outdoor learning and play.

**ADA Restroom renovation** this work was completed Summer 2025

**Asbestos Abatement** all asbestos has been removed from Nisley

# Why the Nisley campus?

**Modern, better-designed floor plan** where classrooms are brighter and better suited for today's learning needs.

**Collaborative learning spaces** flexible classrooms and shared learning areas are designed to support teamwork, creativity, and hands-on learning.

**Beautiful outdoor learning spaces** that include more green space and an outdoor classroom where students can explore, collaborate, and learn beyond the walls.

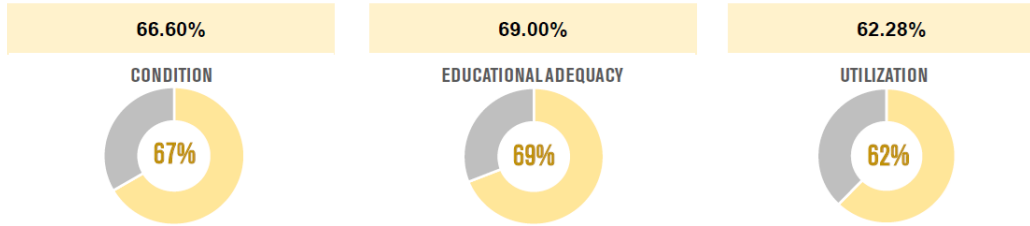
**New playground equipment** that supports both play and social development. ADA compliant.

**Large Gymnasium** A full-size gym with proper ventilation, acoustics, and storage will support both daily PE activities and larger school gatherings or performances.

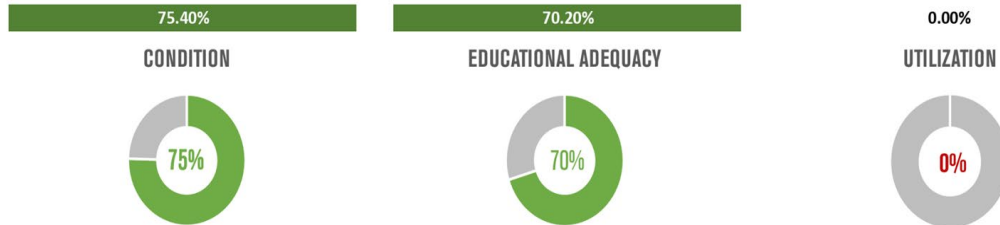
**Space that allows for growth and creativity**, rather than limitations from an aging facility.

# Updated Nisley Facility Report

C

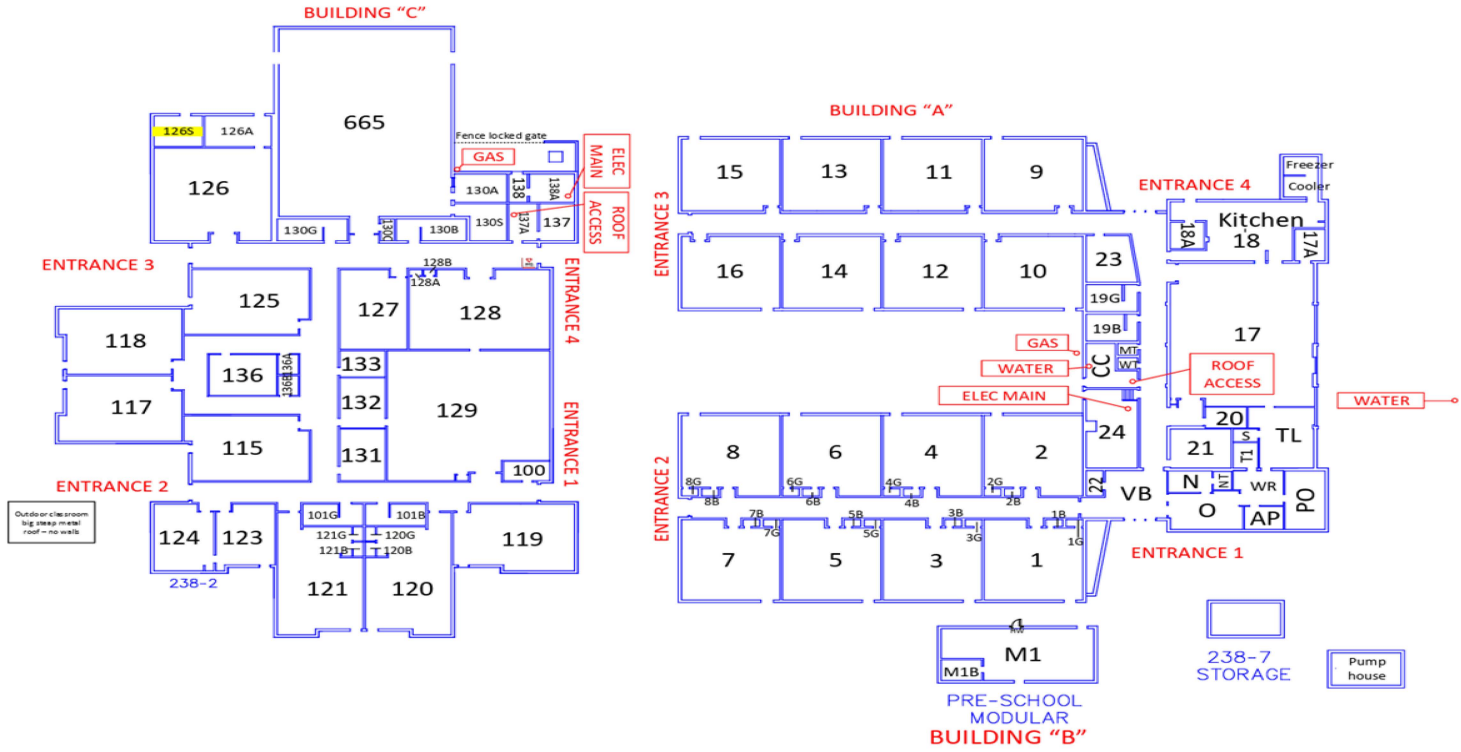


B



- Nisley’s Condition Score has increased from 67% to 75%
- Nisley’s Adequacy score has increased from 69% to 70%.
- The total composite score has **increased from 56.6% (“C” / Fair) to 65.4% (“B” / Acceptable)**.

# Nisley Floorplan



# New Emerson Transition Timeline

Activity	Date	Notes
New Emerson Staff Meeting	<b>Oct 31</b>	8:00 am @ NE
New Emerson Family Mtg	<b>Nov 10</b>	Time TBD
BOE Meeting Update	<b>Nov 18</b>	NE move update
NE move Communication	<b>Nov 19</b>	District wide communication to staff and families
Transition plans to begin	<b>December</b>	Plan and timeline will be shared

We know the strength of this school has never come from bricks and mortar, it's come from *you*: the educators, the support staff, the students, and the families who make this a community. That community isn't being left behind; it's moving forward together into a space that can better support your incredible work.

Questions?

# New Emerson School Transition Proposal

Building the Future: A New Home For New Emerson



**Mesa County Valley School District 51**  
**Licensed and Administrative Personnel Action**

Board of Education Resolution 25/26: 26

Presented: November 18, 2025

Name	Location	Assignment	Effective Date
<b>Retirements</b>			
None at this time.			
<b>Resignations/Termination</b>			
EDWARDS JR, THOMAS A	REDLANDS	COMPUTER ED	9/30/2025
KARKI, NADIA K	BTK	SOCIAL WORKER	11/21/2025
<b>Leave of Absence</b>			
LEVAN, CIERRA NICOLE	WEST	SP ED-MODERATE NEEDS	11/3/2025
<b>New Assignments (Transfer/New Hires)</b>			
BOOK, REBECCA L	LOMA	GRADE 2	12/1/2025
KNOWLES, THEA	CHATFIELD	SP ED-MODERATE NEEDS	12/1/2025
<b>Return from Leave</b>			
BOLLINGER, ALISON L	GJHS	SP ED-MODERATE NEEDS	10/30/2025
CLOW, BAILLIE JEAN	FRUITVALE	GRADE 2	10/23/2025
HEBERDEN, MADISON R	CHATFIELD	GRADE 1	10/27/2025

*I hereby certify that the information contained in the above resolution is accurate and was adopted by the Mesa County Valley School District No. 51 Board of Education on November 18, 2025.*

\_\_\_\_\_  
 Amy Navarette, Assistant Secretary  
 Board of Education

Board of Education Resolution: 25/26: 27

Presented: November 18, 2025

Donor	Gail Woodmansee
Gift	Books
Value	\$60
School/Department	Appleton Elementary School Library

Donor	Elisabeth Ross Boeshaar, The Garden Spa LLC
Gift	Cash
Value	\$90.50
School/Department	Career Center for ACE

Donor	Dale Miller, Grand Valley Medical Imaging
Gift	Cash
Value	\$500
School/Department	Grand Junction High School Boys Golf Program

Donor	Peter and Katy Hart
Gift	Cash
Value	\$100
School/Department	Grand Junction High School Boys Soccer Program

Donor	Robert Vavak, Grand Valley Bank
Gift	Cash
Value	\$300
School/Department	Grand River Academy Lego League

Donor	Stove Depot
Gift	Cash
Value	\$100
School/Department	Grand River Academy Lego League

Donor	Integrity Painting
Gift	Cash
Value	\$100
School/Department	Grand River Academy Lego League

Donor	SOCO Service and Consulting
Gift	Cash
Value	\$100
School/Department	Grand River Academy Lego League

Donor	CBR Solutions LLC
Gift	Cash
Value	\$100
School/Department	Grand River Academy Lego League

Board of Education Resolution: 25/26: 27

Presented: November 18, 2025

Donor	Daphne Wissel
Gift	Cash
Value	\$100
School/Department	Grand River Academy Lego League

Donor	Barbara Kidder
Gift	Cash
Value	\$200
School/Department	Mesa View Elementary School Lego League

Donor	Western Healthcare Alliance
Gift	Cash
Value	\$500
School/Department	Mesa View Elementary School Lego League

Donor	DPC – GJ Inc.
Gift	Cash
Value	\$1,200
School/Department	Palisade High School Baseball Program

Donor	Palisade Basecamp RV Resort
Gift	Cash
Value	\$200
School/Department	Palisade High School Baseball Program

Donor	M.J. and B.A. Bell
Gift	Cash
Value	\$400
School/Department	Palisade High School Baseball Program

Donor	Noland Orchards
Gift	Cash
Value	\$1,200
School/Department	Palisade High School Baseball Program

Donor	Ballast Bob's Lighting Service Inc.
Gift	Cash
Value	\$1,600
School/Department	Palisade High School Baseball Program

Donor	JKM Solutions, LLC; DBA Rapid Response
Gift	Cash
Value	1,008
School/Department	Palisade High School Baseball Program

Board of Education Resolution: 25/26: 27

Presented: November 18, 2025

Donor	Alex and Jamie Sidanycz
Gift	Cash
Value	\$500
School/Department	Palisade High School Boys Basketball Program

Donor	Able Roofing
Gift	Cash
Value	\$1,000
School/Department	Palisade High School Boys Basketball Program

Donor	Little Brats Orchard LLC
Gift	Cash
Value	\$1,000
School/Department	Palisade High School Boys Basketball Program

Donor	Katy Ellison
Gift	Cash
Value	\$400
School/Department	Palisade High School Girls Basketball Program

Donor	Peachfront Property LLC
Gift	Cash
Value	\$250
School/Department	Palisade High School Girls Basketball Program

Donor	Able Roofing
Gift	Cash
Value	\$750
School/Department	Palisade High School Girls Basketball Program

Donor	Realty One Group Western Slope
Gift	Cash
Value	\$250
School/Department	Palisade High School Girls Basketball Program

Donor	Yellow Rose Inc.
Gift	Cash
Value	\$500
School/Department	Palisade High School Athletic Department

Donor	MJ Thomas Enterprises Inc.
Gift	Cash
Value	\$800
School/Department	Palisade High School Athletic Department

Board of Education Resolution: 25/26: 27

Presented: November 18, 2025

Donor	Family Health West Hospital
Gift	Cash
Value	\$9,999
School/Department	Palisade High School Athletic Program

Donor	AfterImage LLC
Gift	Cash
Value	\$400
School/Department	Palisade High School Newspaper

Donor	Asset Engineering Ltd.
Gift	Cash
Value	\$1,125
School/Department	Palisade High School

Donor	Pinyon Field Services LLC
Gift	Cash
Value	\$1,500
School/Department	Palisade High School Wrestling Program

Donor	TISCO, Inc.
Gift	Cash
Value	\$3,500
School/Department	Palisade High School Wrestling Program

Donor	Sergio and Yrene Gomez
Gift	Cash
Value	\$5,000
School/Department	Palisade High School Wrestling Program

Donor	Patti Schraeder
Gift	Cash
Value	\$1,000
School/Department	Wingate Elementary School Playground

Donor	Rick Schraeder
Gift	Cash
Value	\$1,000
School/Department	Wingate Elementary School Playground

Donor	Marian Nelson
Gift	Gift cards
Value	\$150
School/Department	Appleton Elementary for families in need

Board of Education Resolution: 25/26: 27

Presented: November 18, 2025

Donor	Jimmy and Debbie Coleman
Gift	Cash
Value	\$500
School/Department	Grand Junction High School Athletics Hall of Fame

Donor	John J. and Annalee Mazza
Gift	Cash
Value	\$100
School/Department	Grand Junction High School Athletics Hall of Fame

Donor	Donors Choose
Gift	Cash
Value	\$324.65
School/Department	Palisade High School for Tactical Medicine Class

Donor	Anonymous
Gift	Cash
Value	\$7787.28
School/Department	All D51 Elementary School P.E. departments

Donor	Donors Choose
Gift	Cash
Value	\$326.21
School/Department	Orchard Avenue Elementary School STEM

Donor	Donors Choose
Gift	Cash
Value	\$938.94
School/Department	Fruita Monument High School Student Council and Science Dept.

Total: \$49,959.58

NOW THEREFORE BE IT RESOLVED the Mesa County Valley School District 51 Board of Education, in accepting the donations listed above, extends their appreciation and acknowledges these important partnerships within the community which support learning for all students.

*I hereby certify that the information contained in the above resolution is accurate and was adopted by the Mesa County Valley School District 51 Board of Education on November 18, 2025.*

---

*Amy Navarette  
Assistant Secretary, Board of Education*

Board of Education Resolution 25/26: 28

Presented: November 18, 2025

<b>Grant Title</b>	SWAP Program Income
<b>Source</b>	Local
<b>Fund Number</b>	22
<b>Site</b>	Career Center
<b>Description</b>	Funds raised by work-based learning activities.
<b>Budget Amount</b>	\$1,500
<b>Fiscal Year</b>	25/26
<b>Authorized Representative</b>	Julie Gomez – SWAP Coordinator

*NOW THEREFORE BE IT RESOLVED that the Mesa County Valley School District No. 51 Board of Education approved the above identified grant funds for expenditure purposes on November 18, 2025.*

\_\_\_\_\_  
*Amy Navarette*  
*Assistant Secretary, Board of Education*

Resolution To Change the  
Boundaries For Grand Junction and  
Central High Schools

Board of Education Resolution: 25/26: 29

Presented: November 18, 2025

---

WHEREAS, the Board of Education's vision is to engage, equip, and empower each and every student every day; and

WHEREAS, the District is proposing a boundary change between GJHS and CHS to balance enrollment; and

WHEREAS, the proposed change would balance student body size, faculty size and course offering potential at both schools; and

WHEREAS, families, of high school students living in the areas proposed for change and the general public, were invited to attend three community meetings and one virtual meeting to discuss the proposed boundary changes; and

WHEREAS, the proposed boundary change would go into effect for the 2026-27 school year, one class at a time, beginning with 9<sup>th</sup> grade students residing in the boundary change area and adding a grade each subsequent year until all four grades transition; and

WHEREAS, current GJHS 9<sup>th</sup>, 10<sup>th</sup> and 11<sup>th</sup> graders will be grandfathered into GJHS, if they choose to remain, to allow those students to complete their high school years, and graduate from GJHS.

WHEREAS, students currently in 6<sup>th</sup>, 7<sup>th</sup>, and 8<sup>th</sup> grades who have siblings in the 9<sup>th</sup>, 10<sup>th</sup>, 11<sup>th</sup>, and 12<sup>th</sup> grades at GJHS during the 2025-26 school year may be grandfathered into GJHS, in order to allow family members to attend the same school if desired; and

WHEREAS, bussing will be provided for one year, at no cost, for grandfathered high school students currently residing in the boundary change areas to Grand Junction High School for the 2026-2027 school year only and students and parents would provide their own transportation to GJHS thereafter; and

WHEREAS, normal bussing will be provided to Central High School from the boundary change areas upon initiation of the boundary change; and

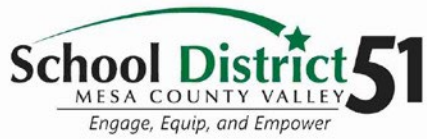
WHEREAS, the areas for the proposed boundary shift are described as:

Area 1 – Business I-70 on the north, the Colorado River on the south, 28 Rd. on the west and 30 Rd. on the east. This area includes portions of the Pear Park and Chipeta elementary attendance areas.

Area 2 – The Colorado River on the north, Unawep Ave. on the south, 28 ½ Rd. on the east and 28 Rd. on the west. This area is the western portion of the Lincoln Orchard Mesa elementary attendance areas.

Area 3 - Unawep Ave. on the north, the alignment of B ¼ Rd. on the south (the north edge of the Fairgrounds), 28 ½ Rd. on the east and 27 ½ Rd. on the west. This area is the western portion of the Lincoln Orchard Mesa elementary attendance area.

Area 4 – The alignment of B ¼ Rd. on the north (the north edge of the Fairgrounds), the southern district boundary on the south, 28 ½ Rd. on the east and 27 ½ Rd. on the west. Also included is Whitewater and the homes in the Reeder Mesa Rd., Kannah Creek Rd. and South Hwy. 50 areas. This area is the western portion of the Mesa View elementary attendance area.



**Mesa County Valley School District**

Resolution To Change the  
Boundaries For Grand Junction and  
Central High Schools

Board of Education Resolution: 25/26: 29

Presented: November 18, 2025

THEREFORE, BE IT RESOLVED, the Board of Education hereby directs the Superintendent to work with the District's demographer to initiate the necessary boundary adjustments to transition high school students residing in the boundary change areas from Grand Junction High School to Central High School for the start of the 2026-2027 school year.

*I certify that the information contained herein is accurate and was adopted by the Mesa County Valley School District 51 Board of Education on November 18, 2025.*

\_\_\_\_\_  
*Amy Navarette*  
*Assistant Secretary, Board of Education*

Category	High School				Middle School				Elementary School				Total		Total for previous years as of: October 31				
	25/26		24/25		25/26		24/25		25/26		24/25		25/26	24/25	23/24	22/23	21/22	20/21	19/20
	M	F	M	F	M	F	M	F	M	F	M	F							
100	2				1		1						3	1		6		2	4
200															1				1
300																			
400			3		1	1	3	1					2	7	2	6	12	3	3
500			1		1		1	2					1	4	7	6	2	1	1
600																			
700			5				3							8	1				
800	1												1	1					
900																			
VOO					1	1	1						2	1	2	8		2	2
<b>Total</b>	<b>3</b>		<b>9</b>		<b>4</b>	<b>2</b>	<b>9</b>	<b>3</b>					<b>9</b>	<b>21</b>	<b>13</b>	<b>27</b>	<b>14</b>	<b>8</b>	<b>11</b>

**Category Description**

- 100 - drug or controlled substance
- 200 - alcohol
- 300 - tobacco
- 400 - assault
- 500 - dangerous weapons
- 600 - robbery
- 700 - other felonies
- 800 - Disobedient/Defiant or Repeated Interference
- 900 - Detrimental
- V00 - other violations

