

Board of Education Special Meeting

Thursday, March 24, 2022 6:00 PM

Zoom Meeting

I. CALL TO ORDER, VERIFICATION OF QUORUM

**II. DISCUSSION REGARDING REVIEW OF FOC/TECTON
OPTIONS FOR FUTURE SCHOOL CAMPUS CONFIGURATION**

III. ADJOURNMENT

WESTON BOARD OF EDUCATION

Weston, CT

Meeting Date: March 24, 2022

Information Only

Action Requested

Agenda Item Subject: Review of FOC/Tecton Options for Future School Campus Configuration

Submitted by: Tecton

Document Summary/Purpose and/or Recommended Action:

Discussion regarding review of FOC/Tecton options for future school campus configuration.



Tecton
ARCHITECTS

WESTON BOE OPTIONS PLANNING DISCUSSION

WESTON, CT

03.24.2022

*This document is for discussion purposes only. ALL options, numbers, quantities, subject lines, and costs are DRAFT only and are subject to change after formal review of FOC.
DRAFT COPY - 03.24.2022
WORK IN PROGRESS*

(New as of 3.24.2022)

Agenda



Tecton
ARCHITECTS

1. STEAM
2. Project Status Recap & Project Goals
3. Options ~ Goals, Opportunities & Challenges
4. Options ~ Review
5. Summary
6. Conclusion, Next Steps, & Discussion

*This document is for discussion purposes only. ALL options, numbers, quantities, subject lines, and costs are DRAFT only and are subject to change after formal review of FOC.
DRAFT COPY - 03.24.2022
WORK IN PROGRESS*

3
Fall



(Strategic)
(Town)
(and)

Steam

(Educational) (Assets)
(Masterplan)

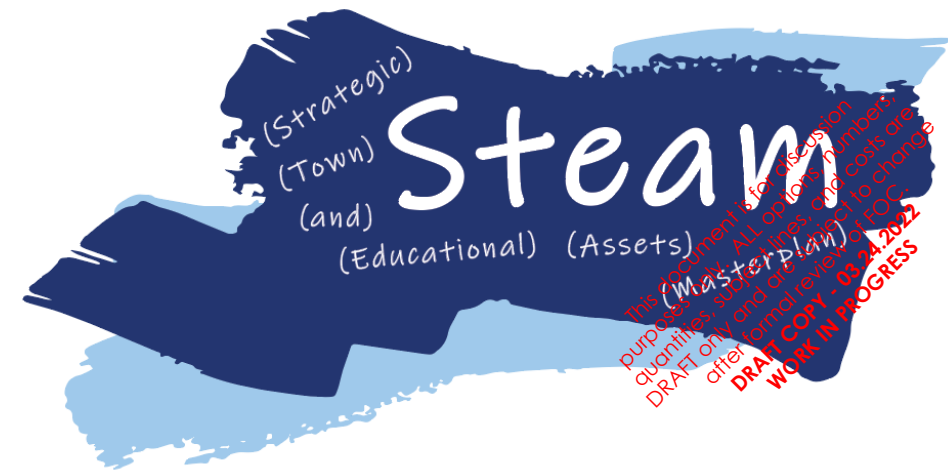
Ahead!

*This document is for discussion purposes only. All options, numbers, quantities, subject lines, and costs are DRAFT only and are subject to change after formal review of FOC.
DRAFT COPY - 03-24-2022
WORK IN PROGRESS*



WHAT is STEAM?

STEAM examines Weston's Town & School Facilities wholistically to allow for both long term budgeting and delivery of exceptional programming in a transparent and fiscally responsible way.





FOC Meetings typically 2x month



Community Conversation #1

Kickoff Meeting with Tecton Team

Stay Involved!
Community Conversation #2

Be part of the Solution!
Community Conversation #3



Validate Existing Conditions, Programming, and Utilization

Discussion & development of possible solutions

- Opportunities
- Benefits/Challenges
- Economic Impact
- Synergies & Scope
- Schedule

Conceptual Design
Refinement of the Options

Finalize Recommendation
Possible Grant Submission



This document is for discussion purposes only. All options, numbers, quantities, subject lines, and costs are DRAFT only and are subject to change after formal review of FOC. **DRAFT COPY - 03.24.2022**
WORK IN PROGRESS

Goals of the Project ~ A plan for the future



- 1 Document existing conditions, utilization, and capacity of Town and school facilities, identify deficiencies & opportunities to improve
- 2 Understand current and future needs, then integrate them into a long-range plan including economic implications
- 3 Identify synergies among school and town, with the goal of optimizing use
- 4 Develop a plan that will align and optimize all of the community's assets and operations to create the best future for Weston

This document is for discussion purposes only. All options, numbers, quantities, subject lines, and costs are DRAFT only and are subject to change after formal review. FOC. DRAFT COPY - 03.24.2022 WORK IN PROGRESS

OPTIONS

GOALS, OPPORTUNITIES & CHALLENGES

*This document is for discussion purposes only. ALL options, numbers, quantities, subject lines, and costs are DRAFT only and are subject to change after formal review of FOC.
DRAFT COPY - 03-24-2022
WORK IN PROGRESS*

Existing Campus



*This document is for discussion purposes only. All options, numbers, quantities, subject lines, and costs are DRAFT only and are subject to change after formal review of FOC.
DRAFT COPY - 03.24.2022
WORK IN PROGRESS*

Options ~ Challenges & Opportunities



1. Any substantial renovation would require thoughtful approach to phasing & sequencing of possible work
2. Useable land areas are limited on current campus due to existing improvements and/or wetlands
3. Consider multi-phased/year approach to projects to allow for some flexibility (ie. post Covid impact on enrollment & education)
4. Based upon current enrollment projections, the reduction from a 4 school to 3 school district **will** require additions, modifications, and/or compromises of educational space for any option considered. **A reduction from 4 to 3 schools is not recommended.**

This document is for discussion purposes only. All options, numbers, quantities, subject lines, and costs are DRAFT only and are subject to change after formal review of FOC.
DRAFT COPY 03.24.2022
WORK IN PROGRESS

Options ~ Goals



1. *Long-term solution (20-30 years) – Think Generational!*
2. *Must be educationally sound, maintain and/or ideally improve educational environment.*
3. *Optimize town and school facilities, possibly reduce overall footprint, integrate 2020 POCD.*
4. *Identify & leverage possible synergies for town and school.*
5. *Minimize disruption during implementation (phasing).*
6. *Fiscally responsible.*

*This document is for discussion purposes only. ALL options, numbers, quantities, subject lines, and costs are DRAFT only and are subject to change after formal review of FOC.
DRAFT COPY - 03-24-2022
WORK IN PROGRESS*

Options ~ Review of our capacity?



- PK
- K
- 1
- 2
- 3
- 4
- 5
- 6
- 7
- 8
- 9
- 10
- 11
- 12

14 Total Grade Levels



WHS



WIS

New or RNV

6 Grades will not fit in either existing building.



WMS



HES

New or RNV

4

+

4

Leaves 6 Grades

3

+

3

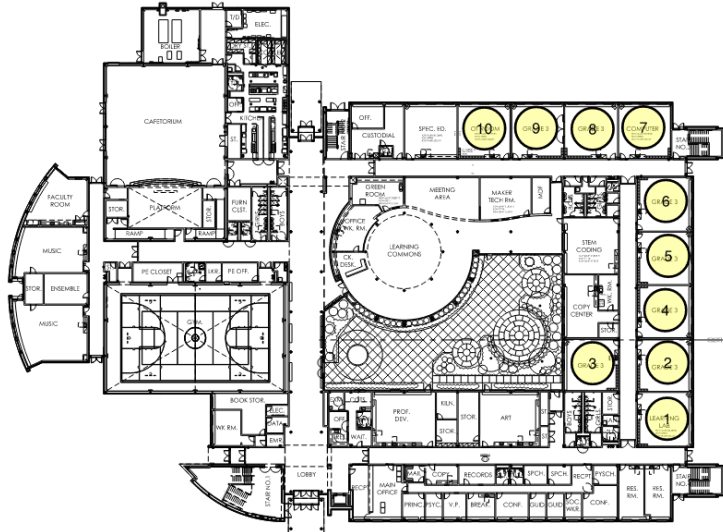
4

+

2

This document is for discussion purposes only. All options, numbers, drawings, and costs are subject to change. DRAFT COPY 03.24.2022. WORK IN PROGRESS

CAPACITY OF WIS...REVIEW THE IMPACT



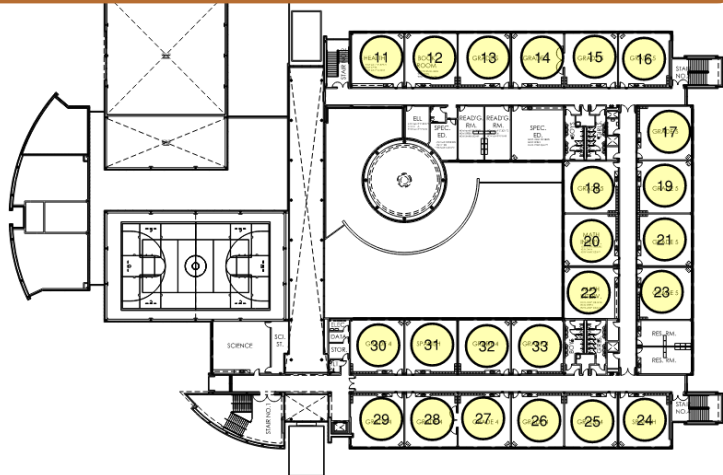
1. Grade 1 through 4 requires 33 general CRs

- Grade 1 ~ 8 Classrooms
- Grade 2 ~ 8 Classrooms
- Grade 3 ~ 8 Classrooms
- Grade 4 ~ 9 Classrooms

Analysis of scheduling for specials will need consideration ~ Art, Music, Maker/STEM, PLTW, Physical Ed.

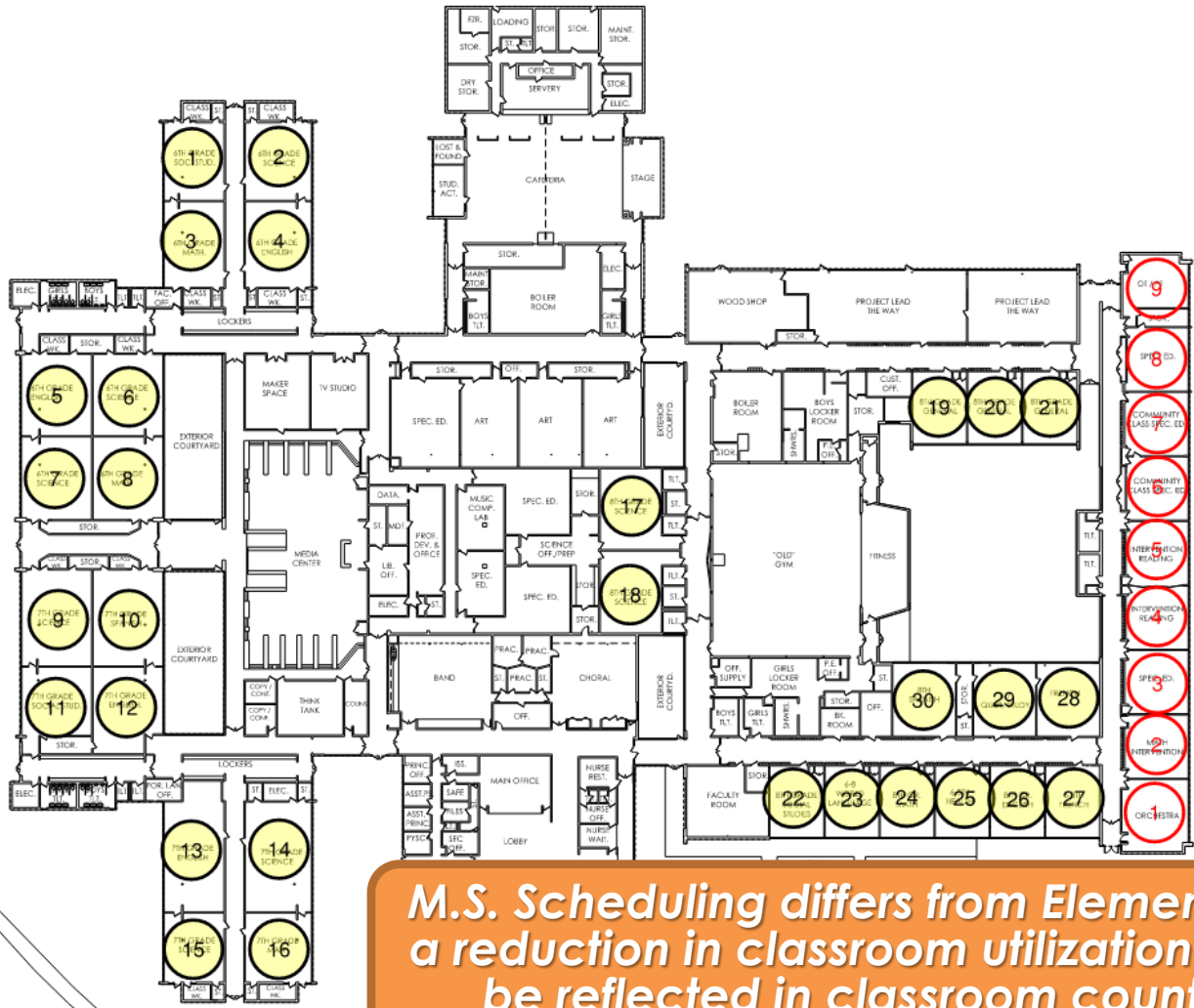
2. Spaces that would be affected

- OT/PT Room
- Computer Room
- Learning Lab
- Health Room
- Book Room
- Math Intervention x 2
- Spanish x 2



EXISTING SECOND FIRST FLOOR
WESTON INTERMEDIATE SCHOOL

CAPACITY OF WMS...REVIEW THE IMPACT



1. Grade 5 through 8 requires 36 general CRs

- Grade 5 ~ 9 Classrooms
- Grade 6 ~ 9 Classrooms
- Grade 7 ~ 9 Classrooms
- Grade 8 ~ 9 Classrooms

2. Spaces that would be affected or require modifications

- OT/PT Room
- Community Class Specialize Education x 4
- Intervention Reading x2
- Math Intervention
- Orchestra

Modification to block scheduling for specials will need consideration ~ Art, Music, Maker/STEM, PLTW, Physical Ed.

This document is for discussion purposes only. All options, numbers, quantities, subject lines, and costs are only and are subject to review after formal review of FOC. **DRAFT COPY - 03-24-2022**
WORK IN PROGRESS

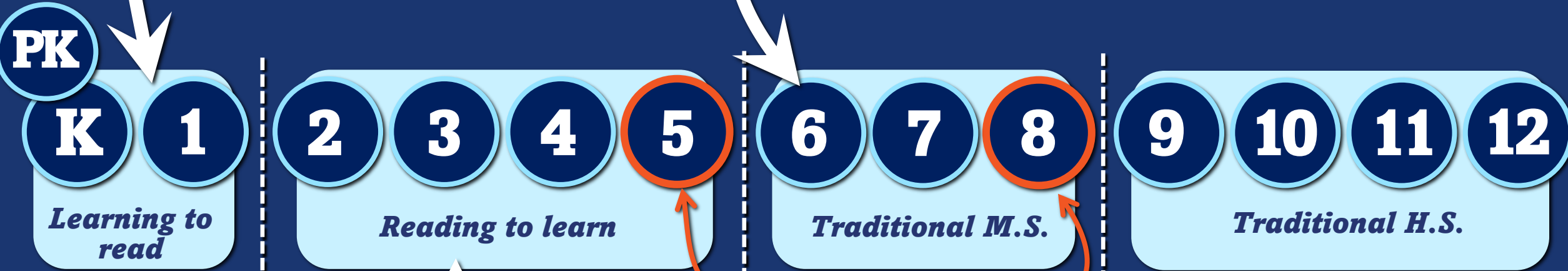
REVIEW OF OPTIONS

*This document is for discussion purposes only. ALL options, numbers, quantities, subject lines, and costs are DRAFT only and are subject to change after formal review of FOC.
DRAFT COPY - 03-24-2022
WORK IN PROGRESS*

Options ~ Why these configurations?

*PK-1 provides **specific** early childhood instruction for learning.*

*6-8 Middle School is **developmentally appropriate**. Instruction, teaming, and schedule align with best practices for this age group.*



- *Provides learning continuity, supports elementary age students' academic progress and social emotional learning*
- *5th grade program and schedule modeled after upper elementary*
- *5th grade becomes **isolated** in Middle School*

*This document is for discussion purposes only. ALL options, numbers, quantities, subject lines, and costs are DRAFT only and are subject to change after formal review of R.O.C.
DRAFT COPY - 03-24-2022
WORK IN PROGRESS*

Options ~ Overview



Maintain Existing

OPTION 1

Renovate Existing

OPTIONS 2 & 2+

New Primary Elementary Reno. M.S.

OPTION 3

New Primary Elementary & New Middle School

PK-2, 3-5, 6-8, 9-12

PK-1, 2-5, 6-8, 9-12

PK-1, 2-5, 6-8, 9-12

PK-1, 2-5, 6-8, 9-12

Isolated Repairs

Isolated Repairs

Build New (PK-1)

Build New (PK-1)

Comprehensive Renovation (6-8)

Build New (6-8)

Grade Reconfiguration

Grade Reconfiguration

Grade Reconfiguration

GSF 0%

GSF -2%

GSF -2/-9%

GSF -9%

No Change to School Campus

Some Optimization of School Campus

More Optimization of School Campus

More Optimization of School Campus

No Change in School Building Area

Some reduction in School Building Area

More reduction in School Building Area

Largest reduction in School Building Area

This document is for discussion purposes only. All options, numbers, drawings, subject lines, and costs are preliminary and are subject to change. DRAFT COPY - 03-21-2022. WORK IN PROGRESS

Program Summary



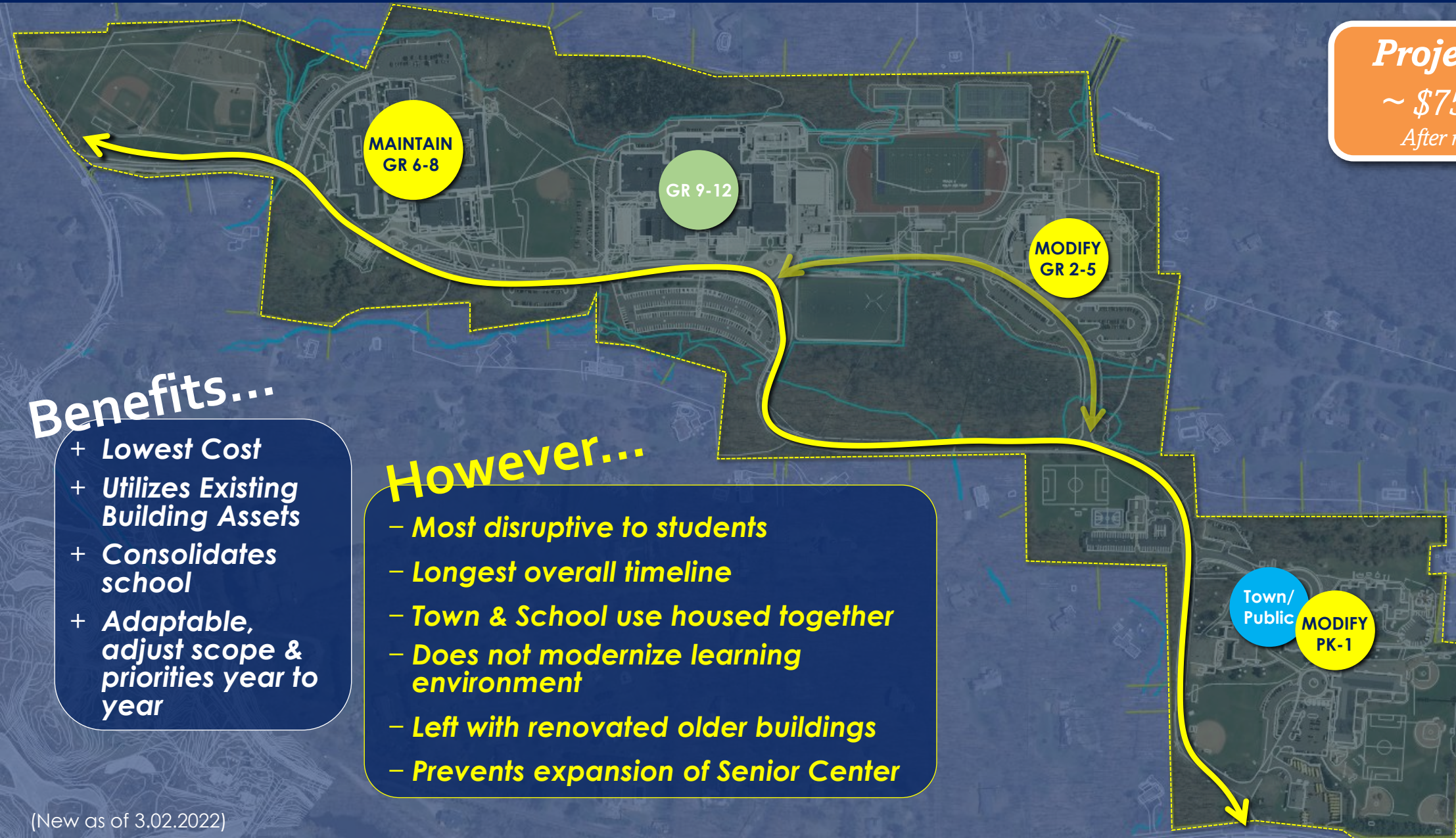
	Maintain and Repair	Renovate Existing	New Early Elementary	New EE & New MS
	Existing	Option 1	Option 2 (2+)*	Option 3
Combined Age of Facilities	<p>~150 years old</p> <p>HES: 1953/54 (69 years old) WIS: 2005 (17 years old) WMS: 1959/60 (63 years old)</p>	<p>~150 years old</p> <p>HES: 1953/54 (69 years old) WIS: 2005 (17 years old) WMS: 1959/60 (63 years old)</p>	<p>~ 80 years old</p> <p>PK-1/New: (0 years old) WIS: 2005 (17 years old) WMS: 1959/60 (63 years old)</p>	<p>~ 20 years old</p> <p>PK-1/New: (0 years old) WIS: 2005 (17 years old) 6-8/New: 10 years old)</p>
Number of School Grade Years Disrupted	<p>Does not escalate costs over 10 years</p>			
Projected Costs at 2/3 of Range				
Cost to Town at 2/3 of Range / Net Reimbursement (New as of 3.02.2022)				

This document is for discussion purposes only. ALL options, numbers, quantities, subject lines, and costs are DRAFT only and are subject to change after formal review of FOC.
DRAFT COPY - 03-24-2022
WORK IN PROGRESS

Proposed Option ~ 1 "Renovate Existing"



Projected Cost
~ \$75.7 Million
After reimbursement



Benefits...

- + Lowest Cost
- + Utilizes Existing Building Assets
- + Consolidates school
- + Adaptable, adjust scope & priorities year to year

However...

- Most disruptive to students
- Longest overall timeline
- Town & School use housed together
- Does not modernize learning environment
- Left with renovated older buildings
- Prevents expansion of Senior Center

This document is for discussion purposes only. ALL options, numbers, quantities, subject lines, and costs are DRAFT only and are subject to change after formal review of FOC. DRAFT COPY - 03-24-2022 WORK IN PROGRESS

Proposed Option ~ 1 (Utilize existing, lowest cost, consolidate)



Step	Project	Area (gsf)	Cost	
			Low	High
1	Targeted modifications to WMS for grades 6-8 (593) <small>Assumes improvements completed during summer/off hours</small>	161,111	32.5 Million <small>(\$32,454,253)</small>	52.4 Million <small>(\$52,361,075)</small>
2	Targeted modifications/additions to WIS for grades 2-5 (746) <small>Assumes improvements completed during summer/off hours. Requires renovate/add to cafeteria, considerable consolidation/relocation of dedicated specialized educational space, special program rooms ~ Science, Spanish, Learning Lab</small>	114,898 +	2.6 Million <small>(2,587,830)</small>	8.6 Million <small>(8,617,350)</small>
3	Targeted modifications/additions to the first floor of HES for PK-1 (350) <small>Assumes improvements completed during summer/off hours. Requires renovate/add to cafeteria to multipurpose</small>	72,267	19.2 Million <small>(19,199,041)</small>	23.5 Million <small>(23,486,775)</small>
4	Targeted modifications to HES Second Floor North House for Town Hall Annex (THA) & Jarvis staff, (Bus Depot & Central off. ETR)	16,628	2.5 Million <small>(2,494,200)</small>	4.2 Million <small>(4,157,000)</small>
5	Demolish TH Annex and create fields, walking path, play and parking.	12,584	1.3 Million <small>(\$1,258,400)</small>	1.6 Million <small>(\$1,590,000)</small>
Subtotal for Proposed Option ~1			58.1 Million	90.3 Million

Projected Cost ~ \$79.7 Million

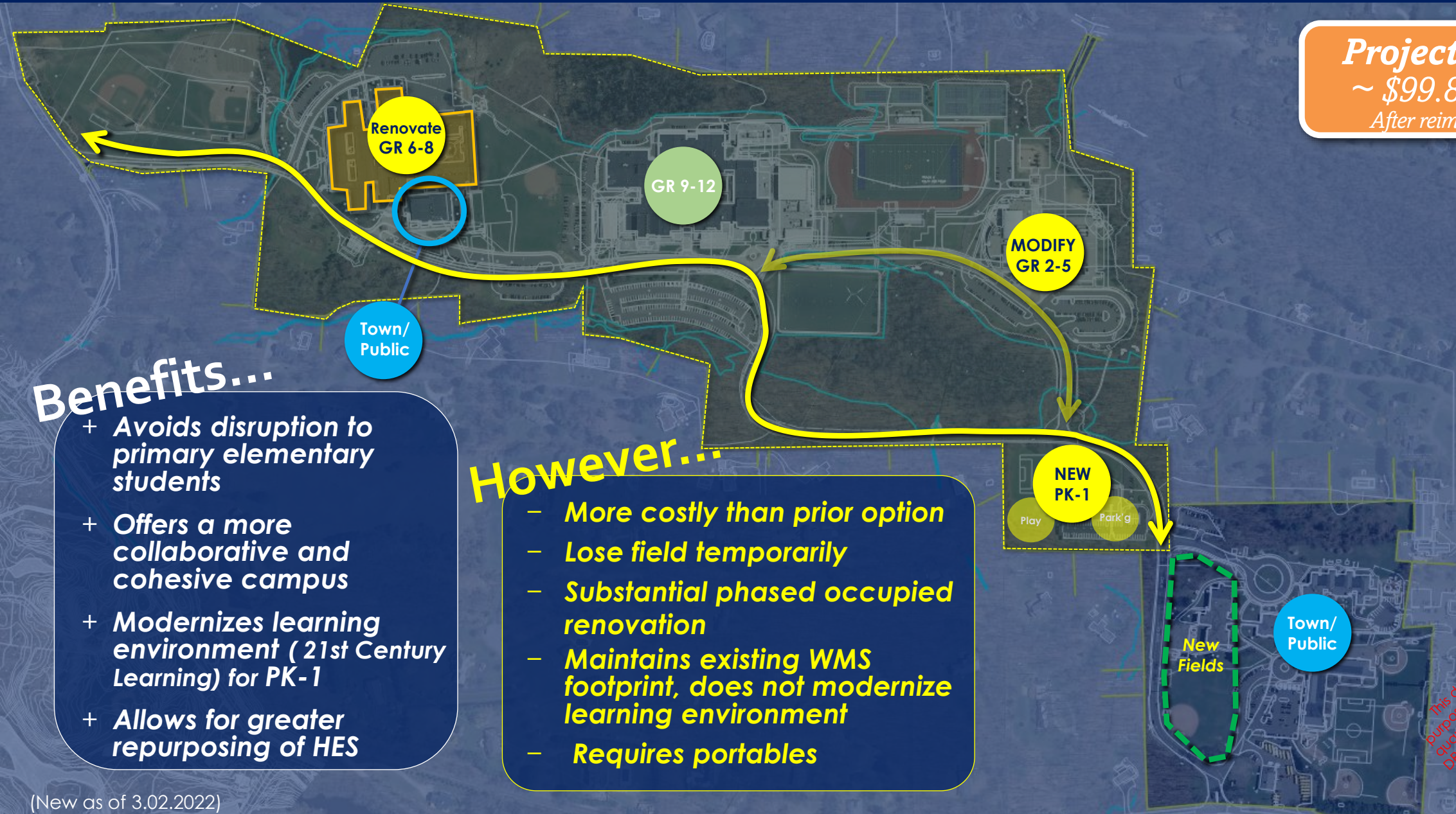
After reimbursement

This document is for discussion purposes only. All options, numbers, quantities, subject lines, and costs are preliminary and are subject to change. Final review of FOC. 03-24-2022
 DRG WORK IN PROGRESS

Proposed Option ~ 2 "Exit HES, New Primary Elementary"



Projected Cost
~ \$99.8 Million
After reimbursement



Benefits...

- + Avoids disruption to primary elementary students
- + Offers a more collaborative and cohesive campus
- + Modernizes learning environment (21st Century Learning) for PK-1
- + Allows for greater repurposing of HES

However...

- More costly than prior option
- Lose field temporarily
- Substantial phased occupied renovation
- Maintains existing WMS footprint, does not modernize learning environment
- Requires portables

This document is for discussion purposes only. ALL options, numbers, quantities, subject lines, and costs are DRAFT only and are subject to change after formal review of FOC. DRAFT COPY - 03-24-2022 WORK IN PROGRESS

Proposed Option ~ 2 “Exit HES, New Primary Elementary”



Tecton
ARCHITECTS

Step	Project	Area (gsf)	Cost	
			Low	High
1	Renovate WMS Grades 6-8 (593), disconnect pool & “new” gym for community use	WMS ~ 135,131 G/P ~ 25,980	59.8 Million (\$59,812,605) 2.6 Million (\$2,598,000)	63.9 Million (\$63,866,535) 3.9 Million (\$3,897,000)
2	Modifications to WIS to accommodate grades 2-5 (746). <i>Temporarily move Town Hall Annex + Central office into HES(2nd floor North House)</i>	114,898 +	2.6 Million (2,587,830)	8.6 Million (8,617,350)
3	Demolish TH Annex, Central Office, prepare site for new building	16,319 (12,584 + 3,735)	1.2 Million (\$1,223,925)	1.6 Million (\$1,631,900)
4	New PK-1 (350) building on TH Annex Site	43,400	27.1 Million (\$27,125,000)	29.8 Million (\$29,749,800)
5	Renovate HES for Expanded Senior Center, Parks & Recreation, Central Office, and TH Annex departments (Other community opportunities)	Req. ~ 29,496 Total ~ 54,587 Exp. ~ 25,091	4.4 Million (\$4,424,400)	7.4 Million (\$7,374,000)
6	Demolish North House & Bus Depot (or repurpose), create fields/parking. Move buses offsite.	34,317 (17,689+16,628)	1.7 Million (\$1,715,850)	2.6 Million (\$2,577,000)
Subtotal for Proposed Option ~ 2			99.4 Million	117.8 Million

Projected Cost ~ \$99.8 Million
After reimbursement

Proposed Option ~ 2+ "Exit HES, New Elem., RNV + Addition M.S."



Projected Cost
~ \$97.6 Million
After reimbursement



Benefits...

- + Avoids disruption to primary elementary students
- + Offers a more collaborative and cohesive campus
- + Modernizes learning environment (21st Century Learning)
- + Allows for greater repurposing of HES
- + Reimagines & "right sizes" Middle School + Addition
- + RNV Reimbursement

However...

- More costly than prior option
- Lose field temporarily
- Substantial phased occupied renovation
- Wetlands challenges

This document is for discussion purposes only. ALL options, numbers, quantities, subject lines, and costs are DRAFT only and are subject to change after formal review of FOC. DRAFT COPY - 03-24-2022 WORK IN PROGRESS

Proposed Option ~ 2+ "Exit HES, New Elem., RNV + Addition M.S."



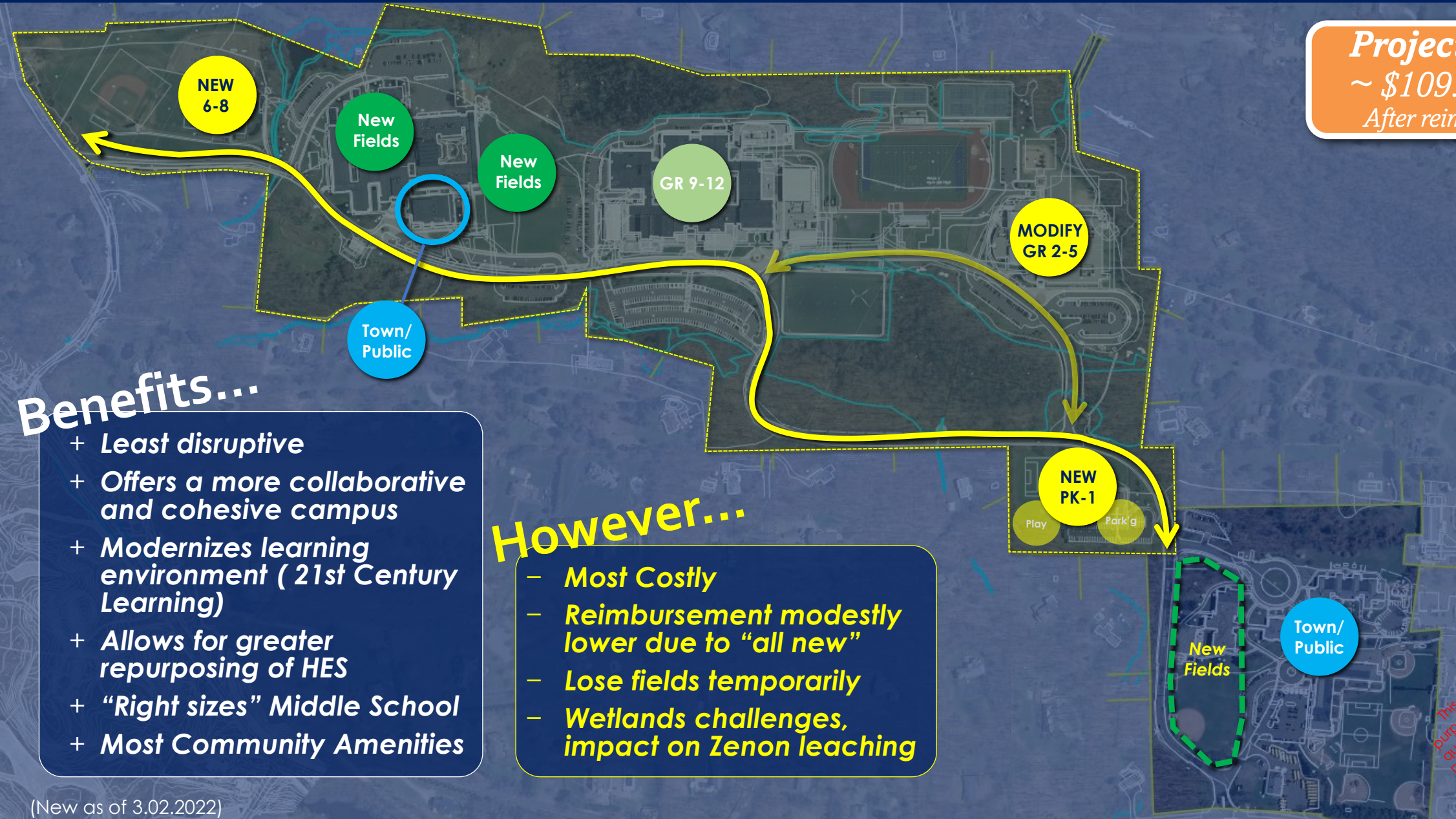
Step	Project	Area (gsf)	Cost	
			Low	High
1	Right size and Renovate as new WMS Grades 6-8 (593), disconnect pool & "new" gym for community use	WMS ~ 99,496 G/P ~ 25,980	64.7 Million (\$64,672,400) 2.6 Million (\$2,598,000)	68.3 Million (\$68,289,798) 3.9 Million (\$3,897,000)
2	Modifications to WIS to accommodate grades 2-5 (746). Temporarily move Town Hall Annex + Central office into HES(2 nd floor North House)	114,898 +	2.6 Million (2,587,830)	8.6 Million (8,617,350)
3	Demolish TH Annex, Central Office, prepare site for new building	16,319 (12,584 + 3,735)	1.2 Million (\$1,223,925)	1.6 Million (\$1,631,900)
4	New PK-1 (350) building on TH Annex Site	43,400	27.1 Million (\$27,125,000)	29.8 Million (\$29,749,800)
5	Renovate HES for Expanded Senior Center, Parks & Recreation, Central Office, and TH Annex departments (Other community opportunities)	Req. ~ 29,496 Total ~ 54,587 Exp. ~ 25,091	4.4 Million (\$4,424,400)	7.4 Million (\$7,374,000)
6	Demolish North House & Bus Depot (or repurpose), create fields/parking. Move buses offsite.	34,317 (17,689+16,628)	1.7 Million (\$1,715,850)	2.6 Million (\$2,511,000)
Subtotal for Proposed Option ~ 2+			104.3 Million	122.2 Million

Projected Cost ~ \$97.8 Million
After reimbursement

Proposed Option ~ 3 "New EE & New Middle School"



Projected Cost
~ \$109.5 Million
After reimbursement



Benefits...

- + Least disruptive
- + Offers a more collaborative and cohesive campus
- + Modernizes learning environment (21st Century Learning)
- + Allows for greater repurposing of HES
- + "Right sizes" Middle School
- + Most Community Amenities

However...

- Most Costly
- Reimbursement modestly lower due to "all new"
- Lose fields temporarily
- Wetlands challenges, impact on Zenon leaching

This document is for discussion purposes only. ALL options, numbers, quantities, subject lines, and costs are DRAFT only and are subject to change after formal review of FOC. **DRAFT COPY - 03-24-2022**
WORK IN PROGRESS

Proposed Option ~ 3 “New EE & New Middle School”

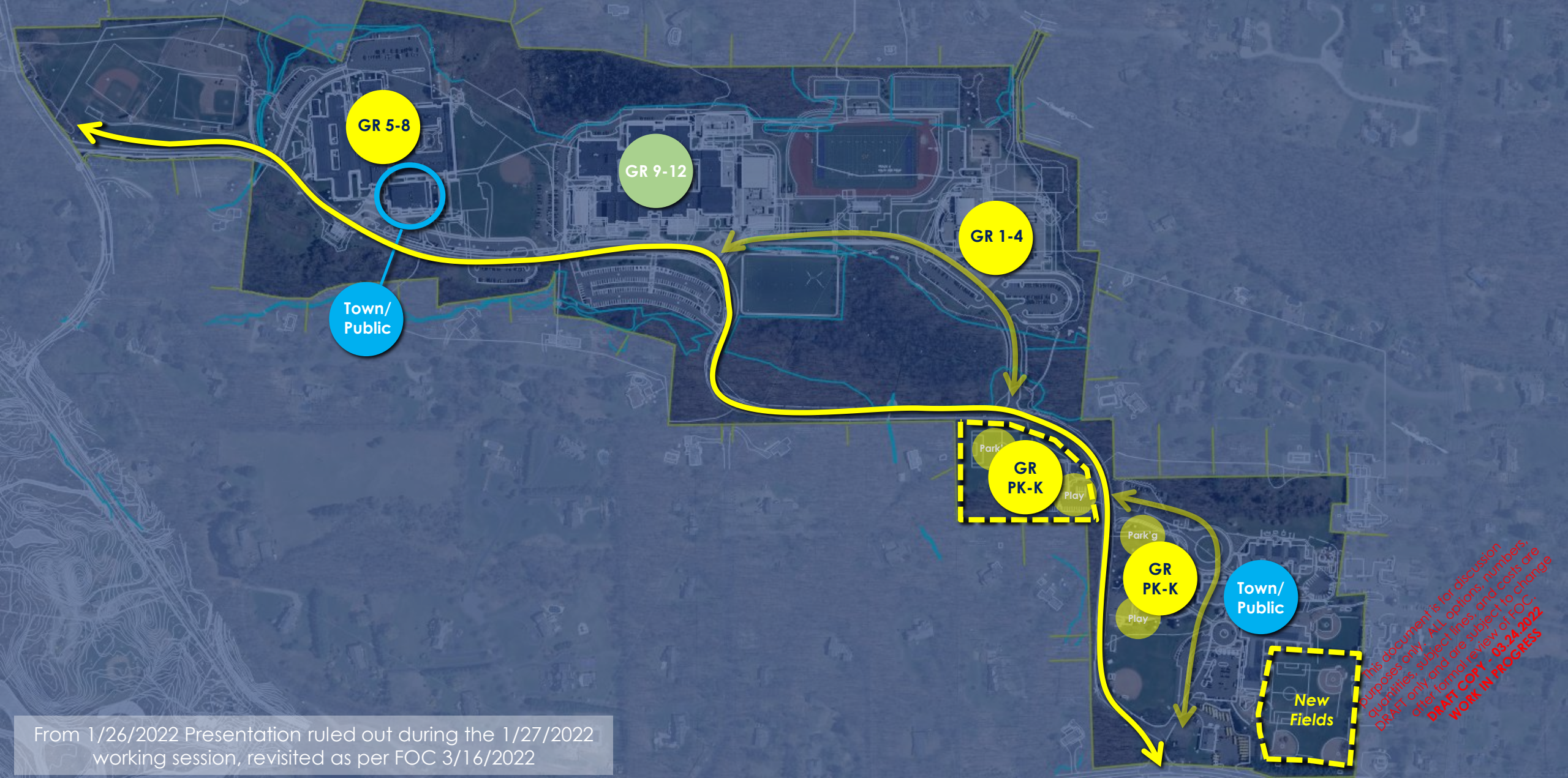


Step	Project	Area (gsf)	Cost	
			Low	High
1	Build New 6-8 (593) on (E) baseball field to north	99,496	64.7 Million (64,672,400)	67.5 Million (\$67,452,552)
2	Modifications to WIS to accommodate grades 2-5 (746). <i>Temporarily move Town Hall Annex + Central office into HES(2nd floor North House)</i>	114,898 +	2.6 Million (2,587,830)	8.6 Million (8,617,350)
3	Demolish TH Annex, Central Office, prepare site for new building	16,319 (12,584 + 3,735)	1.2 Million (\$1,223,925)	1.6 Million (\$1,631,900)
4	New PK-1 (350) building on TH Annex Site	43,400	27.1 Million (\$27,125,000)	29.8 Million (\$29,749,800)
5	Demolish WMS, disconnect pool & “new” gym for community use, relocate baseball field to former WMS	WMS ~ 125,500 G/P ~ 25,980	3.8 Million (3,765,000)	7.5 Million (\$7,530,000)
			2.6 Million (2,598,000)	3.9 Million (\$3,897,000)
6	Renovate HES for Expanded Senior Center, Parks & Recreation, Central Office, and TH Annex departments (Other community opportunities)	Req. ~ 29,496 Total ~ 54,587 Exp. ~ 25,091	4.4 Million (\$4,424,400)	7.4 Million (\$7,374,000)
7	Demolish North House & Bus Depot (or repurpose), create fields/parking. Move buses offsite.	34,317 (17,689+16,628)	1.7 Million (\$1,715,850)	2.6 Million (\$2,617,000)
Subtotal for Proposed Option ~ 3			108.1 Million	128.9 Million

Projected Cost ~ \$109.5 Million

After reimbursement

Proposed Options ~ 4 (revisited after 3/16/2022 FOC Mtg)



From 1/26/2022 Presentation ruled out during the 1/27/2022 working session, revisited as per FOC 3/16/2022

This document is for discussion purposes only. ALL options, numbers, quantities, subject lines, and costs are DRAFT only and are subject to FOC. DRAFT COPY - 03-24-2022 WORK IN PROGRESS

Proposed Options ~ 4 (revisited after 3/16/2022 FOC Mtg)



Tecton
ARCHITECTS

Step	Project	Area (gsf)	Cost	
			Low	High
1	Renovate as new WMS 5-8 (790) ~ assumes addition for phasing /demo, disconnect pool & "new" gym for community use	WMS ~ 125,500 G/P ~ 25,980	81.6 Million (\$81,575,000) 2.6 Million (\$2,598,000)	85.2 Million (\$85,201,033) 3.9 Million (\$3,897,000)
2	Modifications to WIS to accommodate grades 2-5 (746). Temporarily move Town Hall Annex + Central office into HES(2 nd floor North House)	114,898 +	2.6 Million (2,587,830)	8.6 Million (8,617,350)
3	New PK-K on North House (191) site	29,184	19.7 Million (\$19,699,200)	21.6 Million (\$21,574,608)
4	Renovate HES for Expanded Senior Center, Parks & Recreation, Central Office, and TH Annex departments (Other community opportunities)	Req. ~ 29,496 Total ~ 54,587 Exp. ~ 25,091	4.4 Million (\$4,424,400)	7.4 Million (\$7,374,000)
5	Demolish TH Annex, Central Office, prepare site for new building	16,319 (12,584 + 3,735)	1.2 Million (\$1,223,925)	1.6 Million (\$1,631,900)
6	Demolish North House & Bus Depot (or repurpose), create fields/parking. Move buses offsite.	34,317 (17,689+16,628)	1.7 Million (\$1,715,850)	2.6 Million (\$2,574,000)
Subtotal for Option 4			113.8 Million	130.9 Million

Projected Cost ~ \$104.1 Million
After reimbursement

This document is for discussion purposes only. ALL option numbers, quantities, subject lines, and costs are for informational review of FOC. **03-24-2022**
DRAFT - IN PROGRESS

OPTIONS SUMMARY

*This document is for discussion purposes only. ALL options, numbers, quantities, subject lines, and costs are DRAFT only and are subject to change after formal review of FOC.
DRAFT COPY - 03-24-2022
WORK IN PROGRESS*

OPTIONS SUMMARY (SCHOOL ONLY)

Option - 2								Two	Reimb	Reimb
Project	Area		Low			High		Thirds	%	Value
Targeted mods to WIS Grade 2-5 (746)	114,898	\$23	2,587,830	2.6	\$75	\$8,617,350	8.6	6.6	12.5%	0.8
Demolish TH Annex, Central Office	16,319	\$75	1,223,925	1.2	\$100	\$1,631,900	1.6	1.5	0.0%	0.0
New PK-1(350) building on TH Annex Site	43,400	\$625	27,125,000	27.1	\$685	\$29,749,800	29.8	28.9	11.4%	3.3
Renovate WMS Grades 6-8 (593)	135,131	\$443	59,812,605	59.8	\$473	\$63,866,535	63.9	62.5	12.5%	7.7
Disconnect pool & "new" gym for community use	25,980	\$100	2,598,000	2.6	\$150	\$3,897,000	3.9	3.5	0.0%	0.0
Renovate HES for Expanded (SC, P&R, CO, THA)	29,496	\$150	4,424,400	4.4	\$250	\$7,374,000	7.4	6.4	0.0%	0.0
Demolish NH & BD(or repurpose), create fields/parking.	34,317	\$50	1,715,850	1.7	\$75	\$2,573,775	2.6	2.3	0.0%	0.0
Area Subtotal	348,227		95,675,855	99.4		107,461,110	117.8	111.7		12.0
										99.8

2

New PK-1 (350)
Reno WMS 6-8(593)

Option - 2+								Two	Reimb	Reimb
Project	Area		Low			High		Thirds	%	Value
Renovate as "NEW" (RNV) WMS Grades 6-8 (593)	99,496	\$650	64,672,400	64.7	\$686	68,289,798	68.3	67.1	21.4%	14.4
Disconnect pool & "new" gym for community use	25,980	\$100	2,598,000	2.6	\$150	\$3,897,000	3.9	3.5	0.0%	0.0
Targeted mods to WIS Grade 2-5 (746)	114,898	\$23	2,587,830	2.6	\$75	\$8,617,350	8.6	6.6	12.5%	0.8
Demolish TH Annex, Central Office	16,319	\$75	1,223,925	1.2	\$100	\$1,631,900	1.6	1.5	11.4%	0.2
New PK-1(350) building on TH Annex Site	43,400	\$625	27,125,000	27.1	\$685	\$29,749,800	29.8	28.9	11.4%	3.3
Renovate HES for Expanded (SC, P&R, CO, THA)	29,496	\$150	4,424,400	4.4	\$250	\$7,374,000	7.4	6.4	0.0%	0.0
Demolish NH & BD(or repurpose), create fields/parking.	34,317	\$50	1,715,850	1.7	\$75	\$2,573,775	2.6	2.3	0.0%	0.0
Area Subtotal	348,227		104,347,405	104.3		122,133,623	122.2	116.3		18.7
										97.6

2+

New PK-1 (350)
RNV WMS 6-8 (593)

Option - 3								Two	Reimb	Reimb
Project	Area		Low			High		Thirds	%	Value
Build New 6-8 (593) on (E) baseball field to north	99,496	\$650	64,672,400	64.7	\$678	67,452,552	67.5	66.6	11.4%	7.6
Targeted mods to WIS Grade 2-5 (746)	114,898	\$23	2,587,830	2.6	\$75	\$8,617,350	8.6	6.6	11.4%	0.8
Demolish TH Annex, Central Office	16,319	\$75	1,223,925	1.2	\$100	\$1,631,900	1.6	1.5	11.4%	0.2
New PK-1(350) building on TH Annex Site	43,400	\$625	27,125,000	27.1	\$685	\$29,749,800	29.8	28.9	11.4%	3.3
Demolish WMS & create fields	125,500	\$30	3,765,000	3.8	\$60	\$7,530,000	7.5	6.3	11.4%	0.7
Disconnect pool & "new" gym for community use	25,980	\$100	2,598,000	2.6	\$150	\$3,897,000	3.9	3.5	0.0%	0.0
Renovate HES for Expanded (SC, P&R, CO, THA)	29,496	\$150	4,424,400	4.4	\$250	\$7,374,000	7.4	6.4	0.0%	0.0
Demolish NH & BD(or repurpose), create fields/parking.	34,317	\$50	1,715,850	1.7	\$75	\$2,573,775	2.6	2.3	0.0%	0.0
Area Subtotal	348,227		108,112,405	108.1		128,826,377	128.9	122.0		12.5
										109.5

3

New PK-1 (350)
New WMS 6-8(593)
Demolish (existing) + fields

Option - 4								Two	Reimb	Reimb
Project	Area		Low			High		Thirds	%	Value
Renovate as New 5-8 (790)	125,500	\$650	81,575,000	81.6	\$679	\$85,201,033	85.2	84.0	21.4%	18.0
Disconnect pool & "new" gym for community use	25,980	\$100	2,598,000	2.6	\$150	\$3,897,000	3.9	3.5	0.0%	0.0
Targeted mods to WIS Grade 2-5 (746)	114,898	\$23	2,587,830	2.6	\$75	\$8,617,350	8.6	6.6	11.4%	0.8
New PK-K(191) building NH or THA site	29,184	\$675	19,699,200	19.7	\$739	\$21,574,608	21.6	21.0	11.4%	2.4
Renovate HES for Expanded (SC, P&R, CO, THA)	29,496	\$150	4,424,400	4.4	\$250	\$7,374,000	7.4	6.4	0.0%	0.0
Demolish TH Annex, Central Office	16,319	\$75	1,223,925	1.2	\$100	\$1,631,900	1.6	1.5	0.0%	0.0
Demolish NH & BD(or repurpose)	34,317	\$50	1,715,850	1.7	\$75	\$2,573,775	2.6	2.3	0.0%	0.0
Area Subtotal	375,694		113,824,205	113.8		130,869,666	130.9	125.3		21.1
										104.1

4

New PK / K (191)
RNV WMS 5-8 (790)

This document is for discussion purposes only. ALL options, numbers, quantities, subject lines, and costs are after formal review of FOC. DRAFT COPY - 03-24-2022 WORK IN PROGRESS

OPTIONS SUMMARY (SCHOOL ONLY)

Option

Scope

Est. Cost less Reimb.

Est. Cost to Weston

2

**New PK-1 (350)
Reno WMS 6-8(593)**

**28.9M – 3.3M Reimb.
62.5M – 7.8M Reimb.**

80.3 M

2+

**New PK-1 (350)
RNV WMS 6-8 (593)**

**28.9M – 3.3M Reimb.
67.1M – 14.4M Reimb.**

78.4 M

3

**New PK-1 (350)
New WMS 6-8(593)
Demolish (existing) + fields**

**28.9M – 3.3M Reimb.
66.6M – 7.6M Reimb.
6.3M – 0.7M Reimb.**

90.2 M

4

**New PK /K (191)
RNV WMS 5-8 (790)**

**21M – 2.4M Reimb.
84M – 18M Reimb.**

84.6 M

This document is for discussion purposes only. ALL options, numbers, quantities, schedules, lines, and costs are DRAFT only and are subject to change after final review of FOC. DRAFT COPY - 03-24-2022 WORK IN PROGRESS

WHY? WHAT DO YOU GET?

*This document is for discussion purposes only. ALL options, numbers, quantities, subject lines, and costs are DRAFT only and are subject to change after formal review of FOC.
DRAFT COPY - 03.24.2022
WORK IN PROGRESS*

21st Century Learning: **What it is**

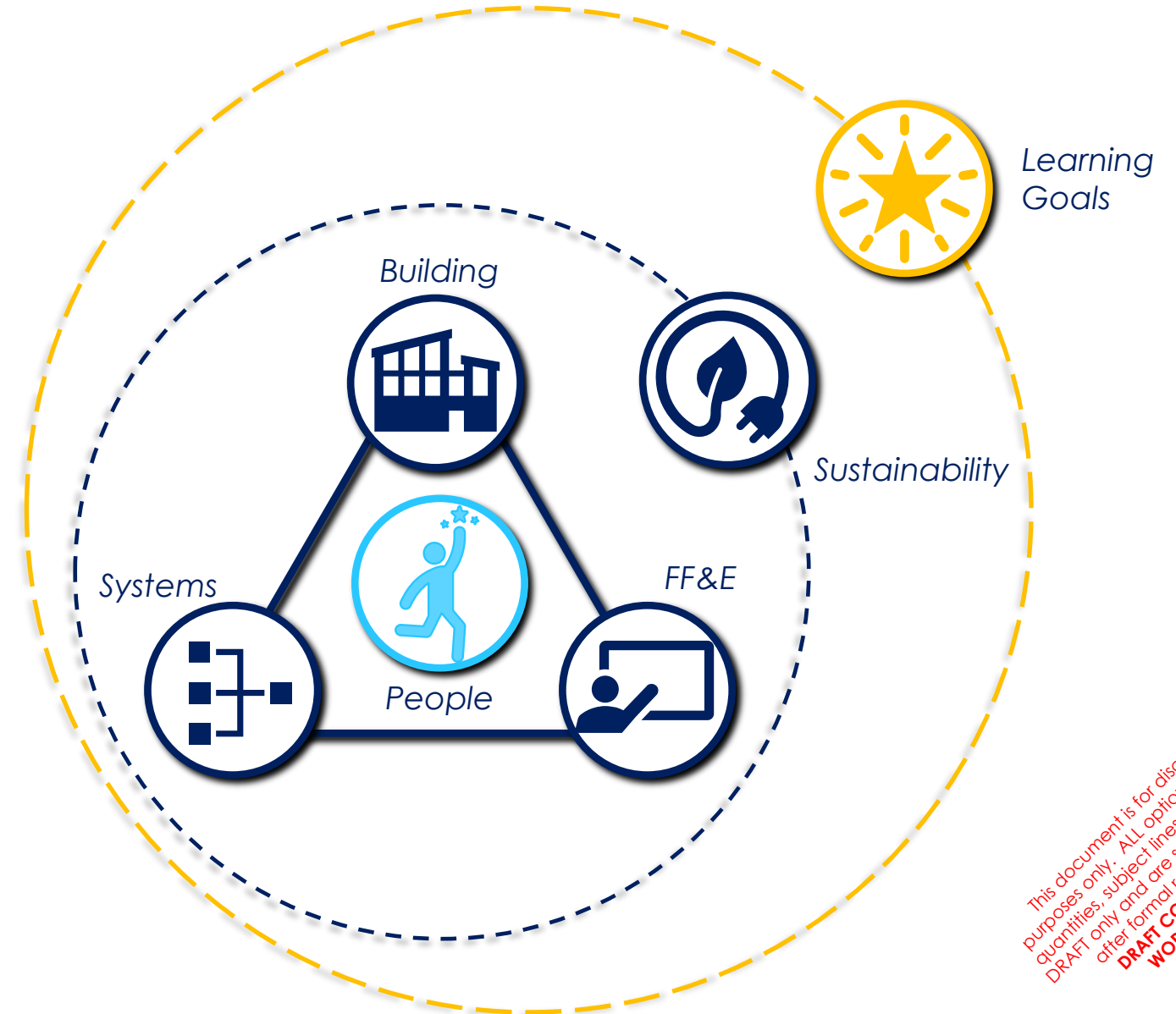


21st Century Learning is:

Comprehensive

People-centered

Guided by goals for learning



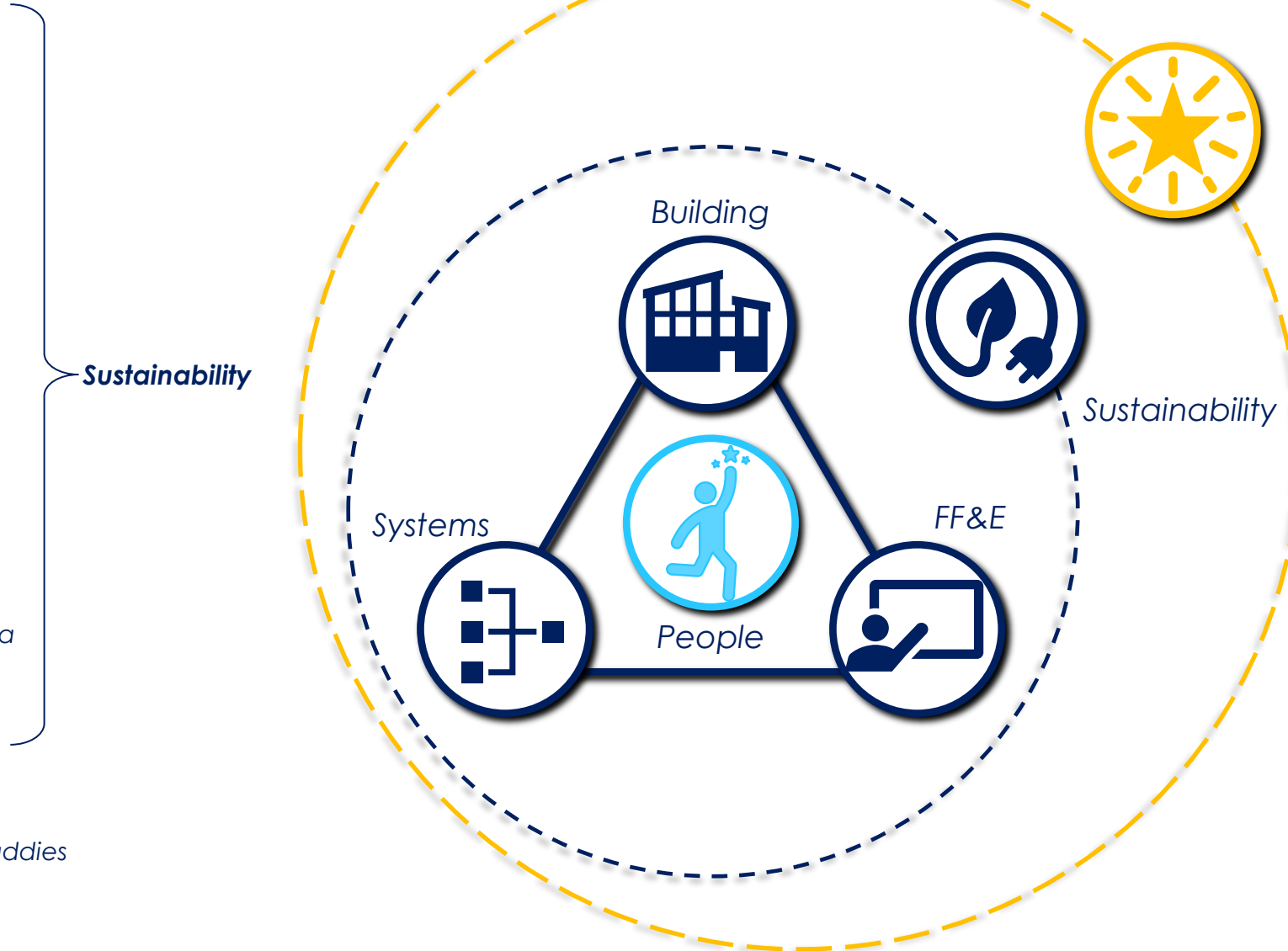
*This document is for discussion purposes only. ALL options, numbers, quantities, subject lines, and costs are DRAFT only and are subject to change after formal review of FOC.
DRAFT COPY - 03-24-2022
WORK IN PROGRESS*

21st Century Learning: **What you get**



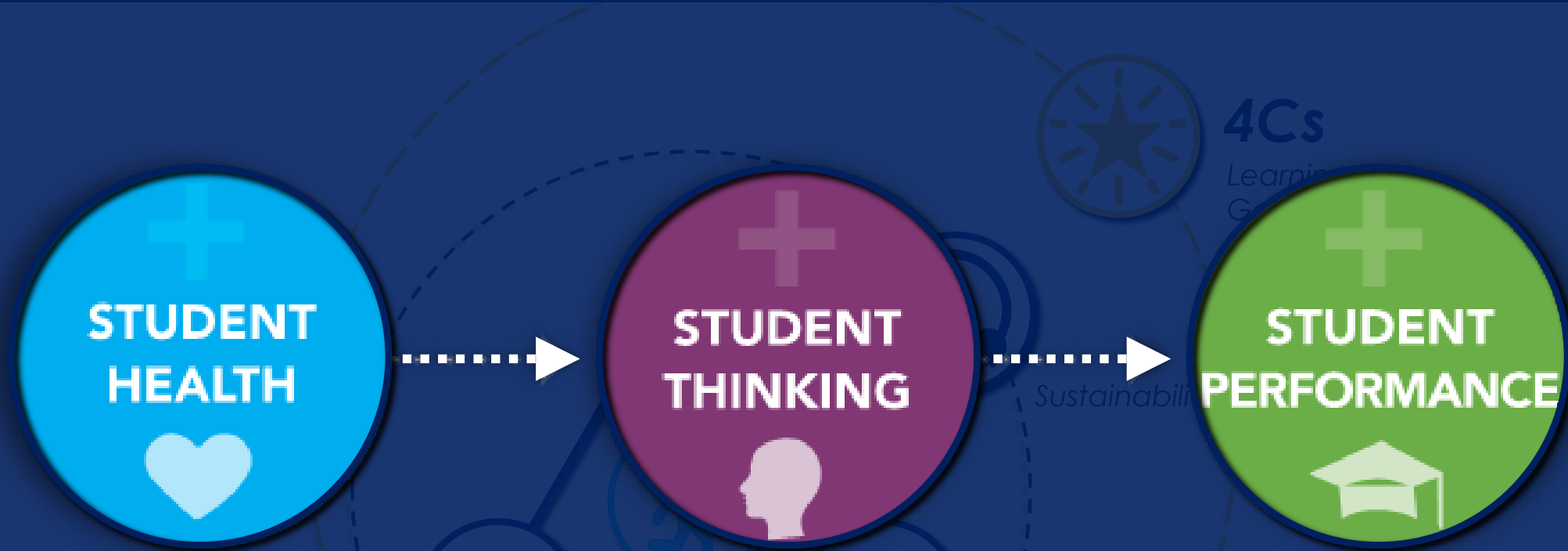
21st Century Learning is:

- B 1. *Efficient Building Envelope*
- B 2. *Daylight*
- B 3. *Well-scaled Spaces*
- B 4. *Flexible & Adaptable Spaces*
- B 5. *Sense of Belonging*
- B 6. *Safety & Security*
- S 1. *Dedicated, Filtered Air*
- S 2. *Responsive Lighting*
- S 3. *Acoustic Sensitivity*
- S 4. *Thermal Comfort*
- S 5. *Smart Building Management*
- F 1. *Agile Spaces*
- F 2. *Mindful Aesthetics*
- F 3. *Ergonomics*
- F 4. *Connections to Nature, Biophilia*
- F 5. *Spatial Diversity*
- F 6. *Environmental Equity*
- L 1. *Project-based Learning*
- L 2. *Interdisciplinary Collaboration*
- L 3. *Peer Connections / Learning Buddies*
- L 4. *Outdoor Learning*
- L 5. *Buildings that Teach*



*This document is for discussion purposes only. ALL options, numbers, quantities, subject lines, and costs are DRAFT only and are subject to change after formal review of FOC.
DRAFT COPY - 03.24.2022
WORK IN PROGRESS*

21st Century Learning: **Why you'd do this**



"A growing body of research also indicates that the school a child attends is a 'social determinant of health'—a non-medical contributor to overall well-being, alongside other factors like economic stability and family life."²

– 2021 State of Our Schools, 21st Century School Fund, Inc., the International WELL Building Institute pbc, and the National Council on School Facilities

This document is for discussion purposes only. ALL options, numbers, quantities, subject lines, and costs are preliminary and are subject to change. **NOT FOR CONTRACT** 03-24-2022 **WORK IN PROGRESS**

21st Century Learning: The data



Tecton
ARCHITECTS

Envelope technology
accounts for

30%

Of energy used

In daylight classrooms,
students progress

20%
26%

Faster on
math tests

Faster on
reading tests

27%

of middle school
students don't feel
they belong

Connections
between dampness,
leaky envelopes &
respiratory health

With proper
ventilation rates,
students complete
schoolwork tasks

8% faster

Sense of belonging
improves grades,
engagement &
advanced course
selection

Higher levels of
outdoor air contributes
to higher test scores in
math and reading

Increases
happiness and
pro-social
behavior

40 sec.

In nature, or views
to nature, leads to
fewer mistakes on
focused tasks

The physical learning
environment impacts
student learning progress by

25%

*This document is for discussion
purposes only. ALL options, numbers,
quantities, subject lines, and costs are
DRAFT only and are subject to change
after formal review of R.O.C.
DRAFT COPY - 03-24-2022
WORK IN PROGRESS*

21st Century Learning: What it looks like



Tecton
ARCHITECTS

Adaptable



(New as of 3.24.2022)



This document is for discussion purposes only and is not a contract. DR Architects, Inc. 2022. All rights reserved. Work in Progress

21st Century Learning: What it looks like



Tecton
ARCHITECTS



(New as of 3.24.2022)



Active Corridors

This document is for discussion purposes only. All options, numbers, quantities, subject lines, and costs are DRAFT only and are subject to change after formal review of R.F.C. DRAFT COPY - 03-24-2022 WORK IN PROGRESS

21st Century Learning: What it looks like



(New as of 3.24.2022)



Belonging

This document is for discussion purposes only. ALL options, numbers, quantities, subject lines, and costs are DRAFT only and are subject to change after formal review of FOC. DRAFT COPY - 03.24.2022 WORK IN PROGRESS

21st Century Learning: What it looks like



Tecton
ARCHITECTS



(New as of 3.24.2022)



*This document is for discussion purposes only. ALL options, numbers, quantities, subject lines, and costs are DRAFT only and are subject to change after formal review of FOC.
DRAFT COPY - 03.24.2022
WORK IN PROGRESS*

21st Century Learning: What it looks like



Tecton
ARCHITECTS



Daylight

This document is for discussion purposes only. All options, numbers, quantities, subject lines, and costs are DRAFT only and are subject to change after formal review of FOC.
DRAFT COPY - 03.24.2022
WORK IN PROGRESS

(New as of 3.24.2022)

21st Century Learning: What it looks like



Tecton
ARCHITECTS



Nature



(New as of 3.24.2022)



This document is for discussion purposes only. All counts, numbers, graphics, subject lines, and lists are DRAFT only and are subject to change after formal review of POC. DRAFT DATE: 03.24.2022. WORK IN PROGRESS.

THANK YOU



Tecton
ARCHITECTS

Share your thoughts!



EMAIL US:
info@westonct.gov

Follow us



Town
Facebook
Page:
[@westonct.gov](https://www.facebook.com/@westonct.gov)

Find project materials



WEBSITE:
westonct.gov
Check here for updates.

This document is for discussion purposes only. All options, numbers, quantities, subject lines, and costs are DRAFT only and are subject to change after formal review of FOC. DRAFT COPY - 03-24-2022 WORK IN PROGRESS