

Board of Education Meeting

Tuesday, November 27, 2012 7:00 PM

Town Campus Hammonasset Room, 10 Campus Drive , Madison, CT 06443

I. Call to Order / Attendance

II. Executive Session

II.A. Discussion: Personnel Matters

III. School / Community Session

III.A. Public Participation

IV. Student Representatives Report

Speaker (s): Jane Butler and John Ovian

V. Superintendent's Report

Speaker (s): Thomas Scarice

V.A. Update: Daniel Hand High School Class of 2012

Speaker (s): Jean Baker, Director of School Counseling and Guidance

V.B. Follow-up: Town Campus Learning Center (TCLC)

Speaker (s): Thomas Scarice

VI. Board Members' Comments

VII. Reports from Board Committees / Liaison

VII.A. Planning Committee

Speaker (s): Jean Fitzgerald, Chair; Bill Clorite; Pam Meier

VII.B. Personnel Committee

Speaker (s): John Dean, Chair; Cindy Wood, Vice Chair; Robert Ruggiero

VII.C. Policy Committee

Speaker (s): Seth Klaskin, Chair; Ryan Suerth; Cindy Wood

VII.D. Finance Committee

Speaker (s): Bill Clorite, Chair; Jean Fitzgerald; Cindy Wood

VII.E. Ad-Hoc Community Relations Committee

Speaker (s): Ryan Suerth, Chair; Pam Meier, Cindy Wood

VII.F. LEARN Liaison

Speaker (s): Robert Ruggiero

VIII. Audience Response to Information Presented

IX. Consent Agenda

IX.A. Bills Payable: \$89,568.20 - 2011-12 Budget and \$1,237,943.90 - 2012-13 Budget

IX.B. Line Transfers: \$32,863.14

IX.C. Donation: \$6,620 for Field Trips for J.
Milton Jeffrey Elementary School Students from
the J. Milton Jeffrey Elementary School PTO

X. **Minutes of the November 13, 2012 Board of
Education Meeting**

XI. **2013-2014 Budget Assumptions**

XII. **VERIP Retirement Option**

XIII. **Old Business**

XIV. **New Business**

XV. **Future Agenda Items**

XVI. **Meetings / Dates of Importance**

XVII. **Adjournment**

DANIEL HAND HIGH SCHOOL



CLASS OF 2012

SUMMARY REPORT

Class of 2012

Summary Report

Submitted to:

The Board of Education

Thomas Scarice, Superintendent
Madison Public Schools

Barbara Britton, Principal
Daniel Hand High School

Prepared by:

Jean E. Baker
Director of Guidance and Counseling

November 27, 2012

TABLE OF CONTENTS

Introduction	1
Future Plans Summary and Observations for Class of 2012.	1
Applications, Acceptances, and Enrollments	3
“Most Competitive” Colleges and Universities, Applications, Acceptances and Enrollment.....	12
“Highly Competitive” Colleges and Universities, Applications, Acceptances and Enrollment.....	14
Naviance Charts.....	17
Career Cluster.....	18
Indicated Majors.....	19
Advanced Placement (AP) Score Summary	22
Advanced Placement (AP) Five-Year Score Summary	23
UCONN Early College Experience Enrollment Summary	24
UCONN Early College Experience Graphs	25
Scholastic Aptitude Test (SAT) Summary	26
Scholastic Aptitude Test (SAT) DRG-B Comparison.....	26
SAT Critical Reading Scores.....	27
SAT Mathematics Scores.....	28
SAT Writing Scores.....	29
College Board Year Summary Charts.....	30
Class of 2012 ACT Trends	33
Average ACT by Gender.....	33

INTRODUCTION

The purpose of this report is to present vital statistics and information regarding the 326 members of the 2012 class of Daniel Hand High School.

These statistics include post-secondary education, as well as testing and achievement data. Several comparisons in this report are made to the classes of 2008, 2009, 2010, 2011, and 2012 in specific areas. Data was collected through the analysis of school records, personal interview, and information obtained from student surveys in Naviance.

FUTURE PLANS SUMMARY FOR CLASS OF 2012

Comparison of the Classes of 2008 through 2012

CATEGORIES	2008	2009	2010	2011	2012
Number of Graduates	319	290	289	307	326
Four Year College	88%	88%	89%	88%	89%
Two Year College/Tech/Prep	6%	7%	5%	7%	5%
Military, Employment, Undecided	6%	5%	6%	5%	6%

CLASS OF 2012 OBSERVATIONS AND TRENDS

1. Attendance to 4-year colleges has been fairly consistent over the past four years.
2. Total number of college applications processed: **Approximately 2206.**
3. More students applying “early”. More than half of the senior class applied either Early Action or Early Decision by December 1st.
4. Most students are applying electronically—many are using the common application and all are keeping track via Naviance. Over 98% of the colleges now have online applications. Technology has made it easier for students to apply to multiple colleges. The average number of applications at Daniel Hand is 14 compared to the national trend of approximately 5.
5. Applications to UCONN consistently on the rise. We are also increasing the number of University of Connecticut Early College Experience courses offered at DHHS. United States History and Intermediate Spanish Composition courses were added.
6. Applications to colleges beyond the Northeast are on the rise as well as internationally. Increases are observed in the Southern and Midwest regions of the country.
7. More students are taking both the ACT and the SAT.

Applications, Acceptances and Enrollments – 4 year Colleges and Universities

Post-Secondary Institutions	Applications	Acceptances	Attending
Adelphi University	7	6	1
Albertus Magnus College	4	3	0
Alfred University	1	1	0
Allegheny College	1	1	0
American University	9	5	1
Amherst College	5	1	1
Appalachian State University	1	1	0
Arizona State University	5	3	1
Assumption College	5	5	1
Auburn University	1	1	0
Auburn University Montgomery	1	0	0
Babson College	3	0	0
Baldwin Wallace University	1	1	0
Bard College	1	0	0
Barnard College	3	0	0
Barry University	1	1	0
Baruch College of the CUNY	1	0	0
Bates College	5	2	0
Bay State College	1	1	1
Baylor University	2	2	1
Becker College	1	1	0
Belmont University	4	4	0
Bentley University	10	1	0
Berklee College of Music	1	1	0
Binghamton University	4	3	0
Birmingham-Southern College	1	1	0
Boston College	23	5	2
Boston Conservatory	1	1	0
Boston University	20	8	1
Bowdoin College	12	1	0
Brandeis University	3	2	0
Bridgewater State University	3	2	0
Brown University	11	3	2
Bryant University	15	11	2
Bryn Mawr College	1	0	0
Bucknell University	9	2	2
Butler University	1	0	0
Carleton College	1	0	0
Carnegie Mellon University	7	0	0
Case Western Reserve University	2	2	0
Castleton State College	3	2	0
Central Connecticut State University	32	23	11

Post-Secondary Institutions	Applications	Acceptances	Attending
Champlain College	8	8	2
Charleston Southern University	1	1	0
Claremont McKenna	2	0	0
Clark University	2	1	1
Clarkson University	1	1	0
Clemson University	15	9	2
Coastal Carolina University	9	5	1
Colby College	5	1	0
Colby-Sawyer College	6	6	0
Colgate University	13	1	0
College of Charleston	16	7	1
College of Mount Saint Vincent	1	1	0
College of William and Mary	4	1	0
Colorado College	1	0	0
Colorado State University	2	1	1
Columbia College	5	5	2
Columbia University	7	0	0
Connecticut College	14	9	4
Cornell University	8	0	0
Curry College	15	15	4
Dartmouth College	5	1	1
Dean College	1	1	0
Denison University	1	0	0
DePaul University	6	5	2
DePauw University	1	1	0
Dickinson College	5	1	0
Dominican University	1	1	0
Drew University	3	3	0
Drexel University	17	12	2
Duke University	6	1	0
Duquesne University	9	5	2
East Carolina University	2	0	0
East Stroudsburg University of Pennsylvania	1	1	0
Eastern Connecticut State University	15	7	4
Eckerd College	1	1	0
Elmira College	2	2	0
Elon University	13	5	3
Emerson College	11	3	1
Emmanuel College	16	9	1
Emory University	5	4	2
Endicott College	23	9	2
Eugene Lang College, The New School for Liberal Arts	2	0	0
Evangel University	2	2	1
Fairfield University	18	15	4

Post-Secondary Institutions	Applications	Acceptances	Attending
Fairleigh Dickinson University	1	1	0
Fashion Institute of Technology	2	1	1
Faulkner University	1	0	0
Fisher College	3	3	1
Fitchburg State University	1	0	0
Flagler College	1	0	0
Florida Atlantic University	2	1	0
Florida Gulf Coast University	2	1	0
Florida Institute of Technology	2	2	0
Florida State University	3	1	0
Fordham University	28	11	4
Franklin and Marshall College	5	0	0
Franklin Pierce University	3	3	1
Furman University	1	1	0
George Mason University	3	1	0
Georgetown University	7	1	1
Georgia Institute of Technology	6	5	4
Gettysburg College	12	5	0
Goucher College	2	1	1
Hamilton College – New York	2	0	0
Hampshire College	2	1	0
Hartwick College	1	1	0
Harvard University	2	1	1
High Point University	19	10	2
Hobart and William Smith Colleges	7	3	2
Hofstra University	23	21	4
Hood College	1	1	0
Howard University	2	2	0
Indiana University, Bloomington	2	0	0
Iona College	9	6	0
Ithaca College	13	9	0
James Madison University	17	11	2
Johns Hopkins University	7	0	0
Johnson & Wales University	13	8	1
Keene State College	16	9	2
Kenyon College	1	0	0
Keystone College	1	0	0
La Salle University	8	5	1
Lafayette College	9	2	1
Lake Forest College	2	2	0
Lasell College	6	5	2
Lawrence University	2	1	0
Lebanon Valley College	1	1	1
Lehigh University	9	3	0

Post-Secondary Institutions	Applications	Acceptances	Attending
Lesley University	3	3	1
Lewis & Clark College	1	1	0
Liberty University	1	1	1
Lipscomb University	1	1	0
London School of Economics	1	0	0
Long Island University - Post	3	3	0
Louisiana State University	1	0	0
Loyola Marymount University	2	2	0
Loyola University Chicago	6	4	0
Loyola University Maryland	19	11	1
Lynchburg College	2	2	0
Lyndon State College	2	2	1
Lynn University	1	1	0
Macalester College	2	1	1
Macaulay Honors College at CUNY	1	0	0
Manhattan College	2	2	0
Manhattanville College	4	3	1
Marist College	18	6	3
Marquette University	1	1	1
Marymount Manhattan College	6	6	0
Marymount University	1	1	1
Marywood University	1	1	0
Massachusetts College of Pharmacy & Health Sciences	4	3	2
Massachusetts Institute of Technology	1	0	0
Massachusetts Maritime Academy	1	1	1
McDaniel College	1	0	0
McGill University	3	1	0
Mercyhurst University	1	0	0
Merrimack College	8	8	1
Miami University, Ohio	22	17	4
Michigan State University	2	2	0
Middlebury College	6	0	0
Misericordia University	1	1	0
Mitchell College	4	3	0
Montana State University, Bozeman	1	1	1
Moravian College	1	1	0
Mount Holyoke College	1	0	0
Mount Ida College	1	1	0
Mount Saint Mary's University	1	1	0
Muhlenberg College	3	0	0
New England College	2	1	0
New England Institute of Technology	1	1	1
New York University	22	6	3
New York University, Abu Dhabi	1	0	0

Post-Secondary Institutions	Applications	Acceptances	Attending
Newbury College	7	5	0
Nichols College	5	4	2
North Carolina State University	3	2	1
Northeastern University	40	16	1
Northwestern University	14	2	2
Norwich University	3	2	1
Oberlin College	2	1	1
Ohio University	3	2	1
Ohio Wesleyan University	1	1	0
Oregon State University	1	1	0
Pace University, Westchester	1	1	0
Pace University, Manhattan	6	6	2
Parsons The New School for Design	1	1	1
Pennsylvania State University, Berks College	1	1	0
Pennsylvania State University, University Park	14	8	3
Pepperdine University	1	0	0
Philadelphia University	2	2	1
Plymouth State University	5	4	0
Point Park University	1	1	0
Polytechnic Institute of NYU	2	2	1
Pomona College	3	0	0
Post University	1	1	0
Pratt Institute	2	2	0
Princeton University	1	0	0
Providence College	25	14	2
Purchase College	1	1	0
Purdue University	3	2	0
Queen's University	2	1	1
Quinnipiac University	30	20	0
Radford University	1	1	1
Reed College	3	1	1
Regis College	2	2	0
Rensselaer Polytechnic Institute	6	2	0
Rhode Island College	2	2	0
Rhode Island School of Design	2	0	0
Rice University	7	2	1
Rivier University	1	1	0
Roanoke College	4	3	0
Rochester Institute of Technology	4	4	0
Roger Williams University	36	30	4
Rollins College	3	2	1
Rutgers, The State University of New Jersey at New Brunswick	2	0	0
Sacred Heart University	18	13	6
Saint Anselm College	8	7	0

Post-Secondary Institutions	Applications	Acceptances	Attending
Saint Joseph's College, Maine	1	1	1
Saint Joseph's University	11	9	3
Saint Louis University	1	1	0
Saint Michael's College	6	4	0
Salem State University	2	1	0
Salisbury University	5	4	0
Salve Regina University	15	12	6
San Diego State University	1	1	1
Savannah College of Art and Design	1	1	1
School of the Museum of Fine Arts	1	1	0
Seattle University	1	1	0
Seton Hall University	2	2	0
Siena College	4	3	0
Simmons College	4	3	1
Skidmore College	4	1	0
Smith College	1	1	0
Southern Connecticut State University	45	32	11
Southern Methodist University	1	1	0
Southern New Hampshire University	6	5	2
Southern Vermont College	1	1	0
Springfield College	6	4	1
St. Bonaventure University	1	1	1
St. John's University	7	4	0
St. Lawrence University	2	2	2
St. Mary's College of Maryland	1	1	0
St. Olaf College	1	1	0
St. Vincent's College	2	2	1
Stanford University	2	0	0
State University of New York, Albany	2	1	0
State University of New York, Cobleskill	?	1	0
State University of New York, New Paltz	1	1	0
Stetson University	5	5	2
Stevens Institute of Technology	1	1	1
Stonehill College	8	6	1
Stony Brook University	10	8	3
Suffolk University	20	15	3
Susquehanna University	3	2	0
Swarthmore College	2	0	0
Syracuse University	11	4	1
Temple University	3	0	0
Texas A&M University	3	3	1
Texas Christian University	1	1	0
The Art Institute of Philadelphia	1	1	0
The Catholic University of America	4	3	0

Post-Secondary Institutions	Applications	Acceptances	Attending
The College of New Jersey	4	4	1
The College of Saint Rose	1	0	0
The Culinary Institute of America	1	1	1
The George Washington University	7	4	2
The Hartt School, University of Hartford	1	1	0
The Julliard School	1	0	0
The Ohio State University	6	1	1
The University of Alabama	3	2	0
The University of Alabama, Birmingham	1	0	0
The University of Arizona	2	1	1
The University of Montana, Missoula	2	1	0
The University of North Carolina, Chapel Hill	13	3	1
The University of Scranton	10	10	0
The University of Tampa	14	8	4
The University of Texas, Austin	1	0	0
The University of the Arts	1	1	1
The University of West Alabama	1	0	0
Towson University	5	4	0
Trinity College	10	5	4
Troy State University, Dothan	1	0	0
Tufts University	19	4	3
Tulane University	4	2	0
Union College	8	4	0
United States Merchant Marine Academy	1	0	0
University at Buffalo, The State University of New York	1	1	0
University of Aberdeen	1	1	0
University of Bridgeport	1	1	0
University of British Columbia	1	1	1
University of California, Berkeley	1	0	0
University of California, Davis	1	1	0
University of California, Los Angeles	2	0	0
University of California, Santa Barbara	2	1	0
University of Chicago	2	0	0
University of Cincinnati	3	1	0
University of Colorado, Boulder	10	8	1
University of Colorado, Colorado Springs	1	1	0
University of Connecticut	136	111	20
University of Connecticut, Avery Point	2	1	0
University of Dayton	1	1	1
University of Delaware	31	16	6
University of Denver	8	2	0
University of Edinburgh	1	0	0
University of Florida	1	0	0
University of Georgia	6	3	0

Post-Secondary Institutions	Applications	Acceptances	Attending
University of Hartford	6	6	0
University of Illinois, Urbana-Champaign	3	2	0
University of Maine	4	4	0
University of Mary Washington	2	2	0
University of Maryland, Baltimore County	1	1	0
University of Maryland, College Park	2	3	1
University of Massachusetts, Amherst	24	13	2
University of Massachusetts, Boston	4	2	0
University of Massachusetts, Dartmouth	2	1	0
University of Miami	15	6	1
University of Michigan	11	5	2
University of Minnesota, Twin Cities	1	1	0
University of Mississippi	2	1	0
University of New England	3	3	1
University of New Hampshire	22	21	7
University of New Hampshire, Thompson School of Applied Science	1	0	0
University of New Haven	10	9	4
University of North Alabama	1	0	0
University of North Carolina, Charlotte	9	6	1
University of North Carolina, Greensboro	1	0	0
University of North Carolina, Wilmington	11	4	1
University of Notre Dame	4	0	0
University of Pennsylvania	7	0	0
University of Pittsburgh	9	4	0
University of Puget Sound	1	1	0
University of Rhode Island	42	31	4
University of Richmond	12	2	0
University of Rochester	2	2	0
University of San Diego	3	0	0
University of San Francisco	1	1	0
University of South Alabama	1	0	0
University of South Carolina	20	14	2
University of South Carolina, Lancaster	1	0	0
University of Southern California	8	0	0
University of Southern Maine	1	0	0
University of St. Andrews, Scotland	1	1	1
University of Tennessee, Knoxville	4	0	0
University of the Sciences in Philadelphia	1	0	0
University of Vermont	28	23	2
University of Virginia	6	0	0
University of Washington	1	1	1
University of Wisconsin, Madison	3	3	2
Ursinus College	2	2	0
Vanderbilt University	3	1	0

Post-Secondary Institutions	Applications	Acceptances	Attending
Vassar College	3	1	1
Villanova University	18	7	0
Virginia Commonwealth University	1	1	0
Virginia Polytechnic Institute and State University	4	2	1
Virginia Wesleyan College	1	1	0
Wagner College	3	3	0
Wake Forest University	10	4	2
Washington College	1	1	0
Washington University, St. Louis	8	3	0
Wellesley College	1	0	0
Wells College	1	1	0
Wentworth Institute of Technology	5	5	1
Wesleyan University	13	2	1
West Virginia University	3	0	0
Western Connecticut State University	16	10	2
Western New England University	11	9	0
Westfield State University	1	0	0
Wheaton College, Massachusetts	5	5	0
Wheelock College	5	2	1
Whitman College	1	0	0
Willamette University	1	1	0
William Paterson University of New Jersey	1	0	0
Williams College	6	0	0
Wingate University	1	1	0
Wofford College	1	1	0
Worcester Polytechnic Institute	7	2	0
Yale University	11	1	0
Total	2206	1279	291

Applications, Acceptances and Enrollments
2 Year Colleges, Tech Schools, and Prep Schools

2 Year Colleges/Technical Schools/ Prep Schools	Applications	Acceptances	Attending
Branford Hall Career Institute	1	0	0
Gateway Community College	5	4	4
Blinn College	1	1	1
Hank Haney School of Golf	1	1	1
Howard Community College	1	1	0
Laboratory Institute of Merchandising	1	1	0
Le Cordon Bleu	1	1	0
Lincoln Technical Institute	1	1	1
Middlesex Community-Technical College	4	4	4
New England Institute of Technology	1	1	1
Paul Mitchell Cosmetology School	1	1	1
Porter and Chester Institute, Branford	2	2	2
South Kent School	1	1	1
Total	21	19	17

Summary of Post-Graduation Plans

Summary	Applied	Acceptances	Attending
4 Year Colleges and Universities	2206	1279	291
2 Year Colleges/Tech/Prep Schools	21	19	17
Military	N/A	N/A	3
Employment	N/A	N/A	13
Travel	N/A	N/A	2
Total	2227	1298	326

Most Competitive Colleges and Universities* - Applications, Acceptances and Enrollments

**Barron's Profile of American Colleges 2013/30th Edition*

Colleges and Universities	Applications	Acceptances	Attending
Amherst College	5	1	1
Barnard College	3	0	0
Bates College	5	2	0
Boston College	23	5	2
Bowdoin College	12	1	0
Brandeis University	3	2	0
Brown University	11	3	2
Bryn Mawr College	1	0	0
Bucknell University	9	2	2
California Institute of Technology	0	0	0
Carleton College	1	0	0
Carnegie Mellon University	7	0	0
Case Western Reserve University	2	2	0
Claremont McKenna College	2	0	0
Colby College	5	1	0
Colgate University	13	1	0
College of New Jersey	4	4	1
College of the Atlantic, Maine	0	0	0
College of the Holy Cross	4	0	0
College of William and Mary	4	0	0
Colorado College	1	0	0
Columbia University	7	0	0
Connecticut College	14	9	4
Cooper Union	0	0	0
Cornell University	8	0	0
Dartmouth College	5	1	1
Davidson College	0	0	0
Duke University	6	1	0
Emory University	5	4	2
Franklin and Marshall College	5	0	0
George Washington University	7	4	2
Georgetown University	7	1	1
Hamilton College	2	0	0
Harvard University	2	1	1
Harvey Mudd College	0	0	0
Haverford College	0	0	0
Johns Hopkins University	7	0	0
Kenyon College	1	0	0
Lafayette College	9	2	1
Lehigh University	9	3	0
Macalester College	2	1	1
Massachusetts Institute of Technology	1	0	0
Middlebury College	6	0	0
New York University	22	6	3
Northwestern University	14	2	2

Colleges and Universities	Applications	Acceptances	Attending
Oberlin College	2	1	1
Occidental College	0	0	0
Pitzer College	0	0	0
Pomona College	3	0	0
Princeton University	3	0	0
Reed College	3	1	1
Rensselaer Polytechnic Institute	6	2	0
Rhodes College	0	0	0
Rice University	7	2	1
Rose-Hulman Institute of Technology	0	0	0
Scripps College	0	0	0
Smith College	1	1	0
Stanford University	2	0	0
SUNY College at Geneseo	0	0	0
Swarthmore College	2	0	0
Tufts University	19	4	3
Tulane University	4	2	0
U.S. Air Force Academy	0	0	0
U.S. Military Academy at West Point	0	0	0
U.S. Naval Academy	0	0	0
UCLA Berkeley	3	0	0
UCLA Los Angeles	2	0	0
University of Chicago	2	0	0
University of Miami	15	6	1
University of North Carolina, Chapel Hill	0	0	0
University of Notre Dame	4	0	0
University of Pennsylvania	7	0	0
University of Richmond	12	2	0
University of Rochester	2	2	0
University of Southern California	8	0	0
University of Virginia	6	0	0
Vanderbilt University	3	1	0
Vassar College	3	1	1
Villanova University	18	7	0
Wake Forest University	10	4	2
Washington & Lee University	0	0	0
Webb Institute	0	0	0
Wellesley College	1	0	0
Wesleyan University	13	2	1
Whitman College	1	0	0
Williams College	6	0	0
Yale University	11	1	0
Total	433	98	37

Highly Competitive Colleges and Universities* - Applications, Acceptances and Enrollments

**Barron's Profile of American Colleges 2013/30th Edition*

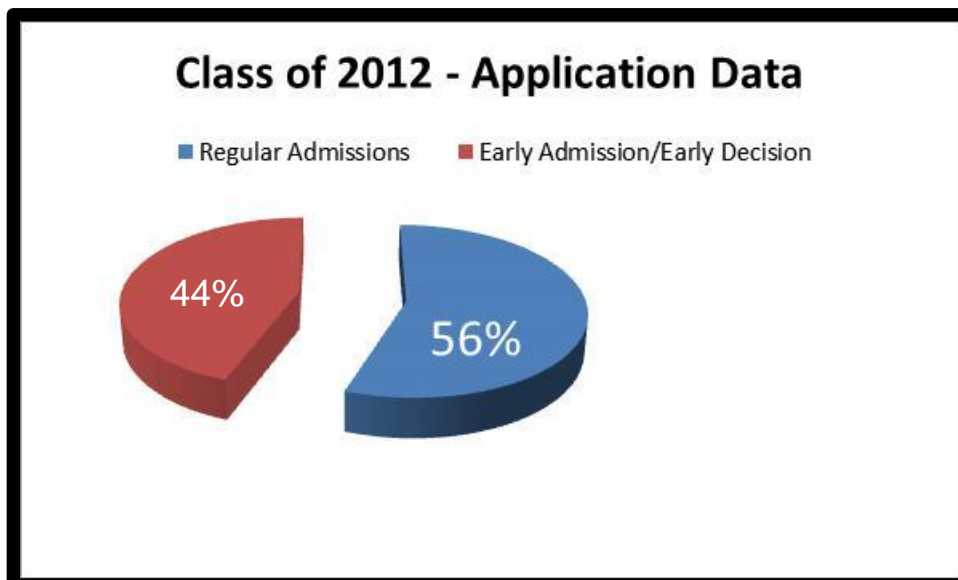
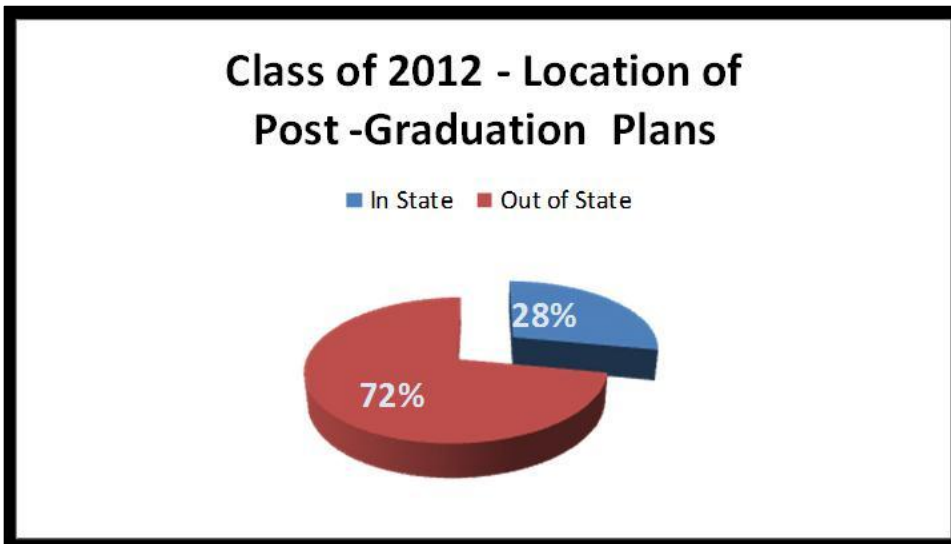
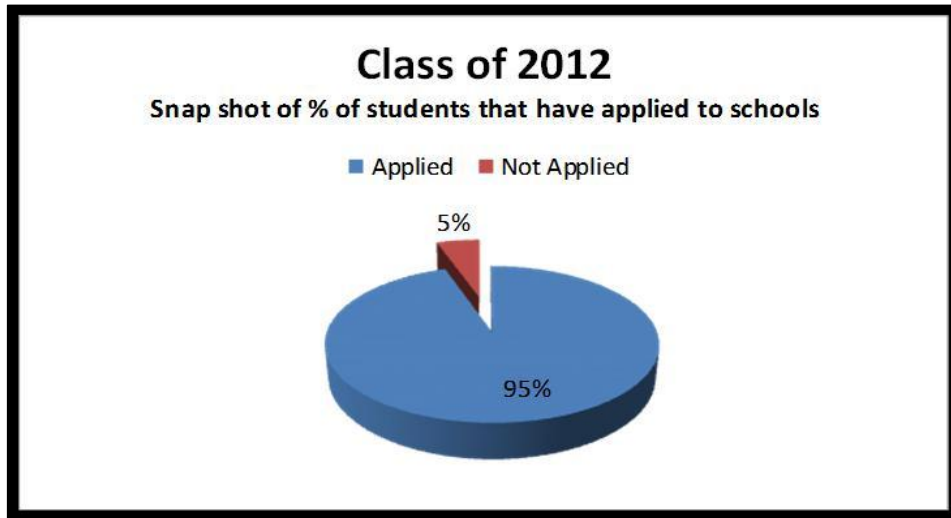
College and Universities	Applications	Acceptances	Attending
Agnes Scott College	0	0	0
Allegheny College	1	1	0
American University	9	5	1
Augustana College	0	0	0
Austin College	0	0	0
Babson College	3	0	0
Bard College at Simon's Rock, Massachusetts	1	0	0
Baylor University	2	2	1
Beloit College	0	0	0
Bennington College	0	0	0
Bentley University	10	1	0
Berry College	0	0	0
Boston University	20	8	1
Bryant University	15	11	2
California Polytechnic State University	0	0	0
Centre College	0	0	0
Christin Brothers University	0	0	0
Clark University	2	1	1
Clemson University	15	9	2
Colorado School of Mines	0	0	0
Cornell College	0	0	0
Denison University	1	0	0
Dickinson College	5	1	0
Elon University	13	5	3
Emerson College	11	3	1
Eugene Lang College of the New School for Liberal Arts	2	0	0
Fordham University	28	11	4
Furman University	1	1	0
Georgia Institute of Technology	6	5	4
Gettysburg College	12	5	0
Gonzaga University	0	0	0
Hampshire College	2	1	0
Hendrix College	0	0	0
Hillsdale College	0	0	0
Illinois Institute of Technology	0	0	0
Illinois Wesleyan University	0	0	0
Indiana University Bloomington	2	0	0
Juniata College	0	0	0
Kalamazoo College	0	0	0
Kettering University	0	0	0
Knox College	0	0	0
Lawrence University	2	1	0
Loyola University, New Orleans	0	0	0
Marquette University	1	1	1
Mount Holyoke College	1	0	0
Muhlenberg College	3	0	0

College and Universities	Applications	Acceptances	Attending
New College of Florida	0	0	0
New Mexico Institute of Mining and Technology	0	0	0
North Carolina State University	3	2	1
Ohio State University	6	1	1
Pepperdine University	1	0	0
Polytechnic Institute of New York University	2	2	1
Providence College	25	14	2
Ramapo College of New Jersey	0	0	0
Rollins College	3	2	1
Rutgers University	2	0	0
Saint John's College, Maryland	0	0	0
Saint John's College, New Mexico	0	0	0
Saint Lawrence University	2	2	2
Saint Mary's College of Maryland	1	1	0
Saint Olaf College	1	1	0
Santa Clara University	0	0	0
Sarah Lawrence College	0	0	0
Sewanee: The University of the South	0	0	0
Shimer College	0	0	0
Southern Methodist University	1	0	0
Southwestern University	0	0	0
SUNY Binghamton	4	0	0
SUNY College of Environmental Science and Forestry	0	0	0
Stevens Institute of Technology	1	1	1
Stonehill College	8	6	1
Stony Brook University	10	8	3
Syracuse University	11	4	1
Texas A & M University	3	3	1
Thomas Aquinas College	0	0	0
Trinity College	10	5	4
Trinity University	0	0	0
Truman State University	0	0	0
Union College	8	4	0
U.S. Merchant Marine Academy	1	0	0
University of California, Davis	1	1	0
University of California, Irvine	0	0	0
University of California, Santa Barbara	2	1	0
University of Connecticut	136	112	20
University of Florida	1	0	0
University of Georgia	6	3	0
University of Illinois, Urbana-Champaign	3	2	0
University of Maryland College Park	7	3	1
University of Michigan Ann Arbor	11	5	2
University of Minnesota Twin Cities	1	1	0
University of Pittsburgh	9	4	1
University of Puget Sound	1	1	0
University of San Diego	3	0	0
University of Texas, Austin	0	0	0
University of Texas, Dallas	0	0	0
University of Tulsa	0	0	0

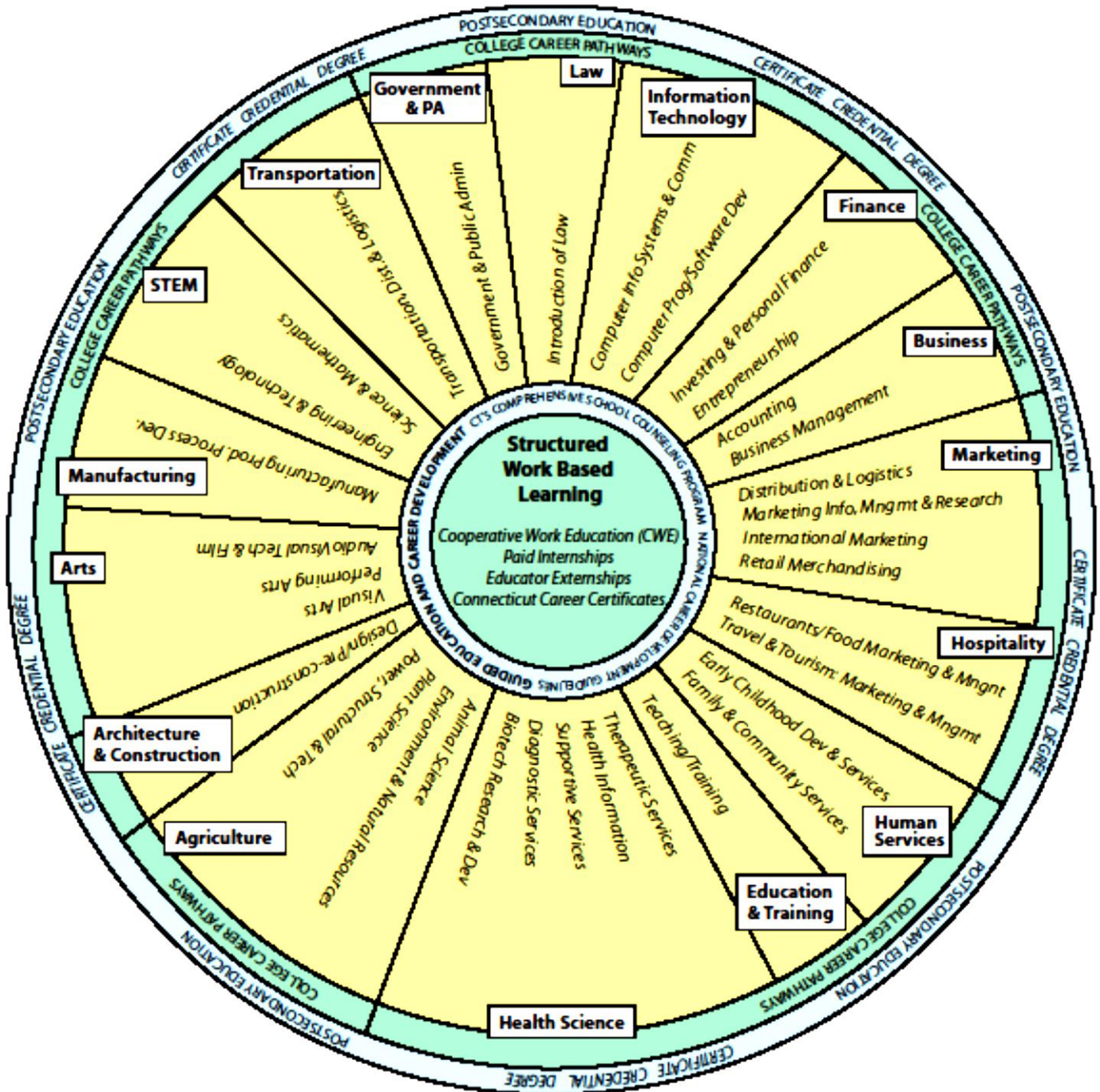
College and Universities	Applications	Acceptances	Attending
University of Wisconsin Madison	3	3	2
Virginia Polytechnic Institute and State University	4	2	1
Westmont College	0	0	0
Wheaton College, Illinois	0	0	0
Wheaton College, Massachusetts	5	5	0
Wofford College	1	0	0
Worcester Polytechnic Institute	7	2	0
Total	472	273	67

Naviance Charts

Below is a sampling of charts generated in Naviance



Career Clusters



Indicated Majors - Class of 2012

Agriculture, Food & Natural Resources	
Major	Number of Students
Packaging Science	1
Environmental Studies	1
Total	2

Architecture and Construction	
Major	Number of Students
Architectural Design	1
Architecture	1
Total	2

Arts, A/V Technology and Communications	
Major	Number of Students
Acting	2
Creative Writing	1
Drama	1
English	1
Music Engineering	1
Music Industry	2
Musical Theater	3
Photography	1
Piano	1
Professional Writing	1
Studio Art	2
Broadcasting	1
Graphic Design	2
Industrial Design	1
Total	20

Business Management and Administration	
Major	Number of Students
Business	24
International Business	1
Small Business Management	1
Fashion Merchandising Management	1
Sports Management	5
Total	32

Education and Training	
Major	Number of Students
Education	16
Music Education	1
Total	17

Finance	
Major	Number of Students
Accounting	3
Finance	5
Economics	2
Total	10

Government and Public Administration	
Major	Number of Students
International Relations	3
Political Science	2
Total	5

Health Sciences	
Major	Number of Students
Medical Assisting	1
Nursing	18
Psychology	9
Physical Therapy	3
Pharmacology	2
Physician's Assistant	1
Pre-Med	2
Athletic Training	1
Speech-Language Pathology	1
Total	38

Hospitality and Tourism	
Major	Number of Students
Baking and Pastry/Culinary	2
Hospitality Management	3
Resort Tourism Management	1
Total	6

Human Services	
Major	Number of Students
Art Therapy	1
Social Work	4
Total	5

Information Technology	
Major	Number of Students
Computer Gaming	1
Computer Science	2
Management Info Services	1
Total	4

Law, Public Safety, Corrections and Security	
Major	Number of Students
Criminal Justice	9
Investigative Services	1
Fire Science	1
Philosophy	1
Total	12

Marketing	
Major	Number of students
Communications	12
Marketing	4
Public Relations	2
Fashion Marketing	1
Total	19

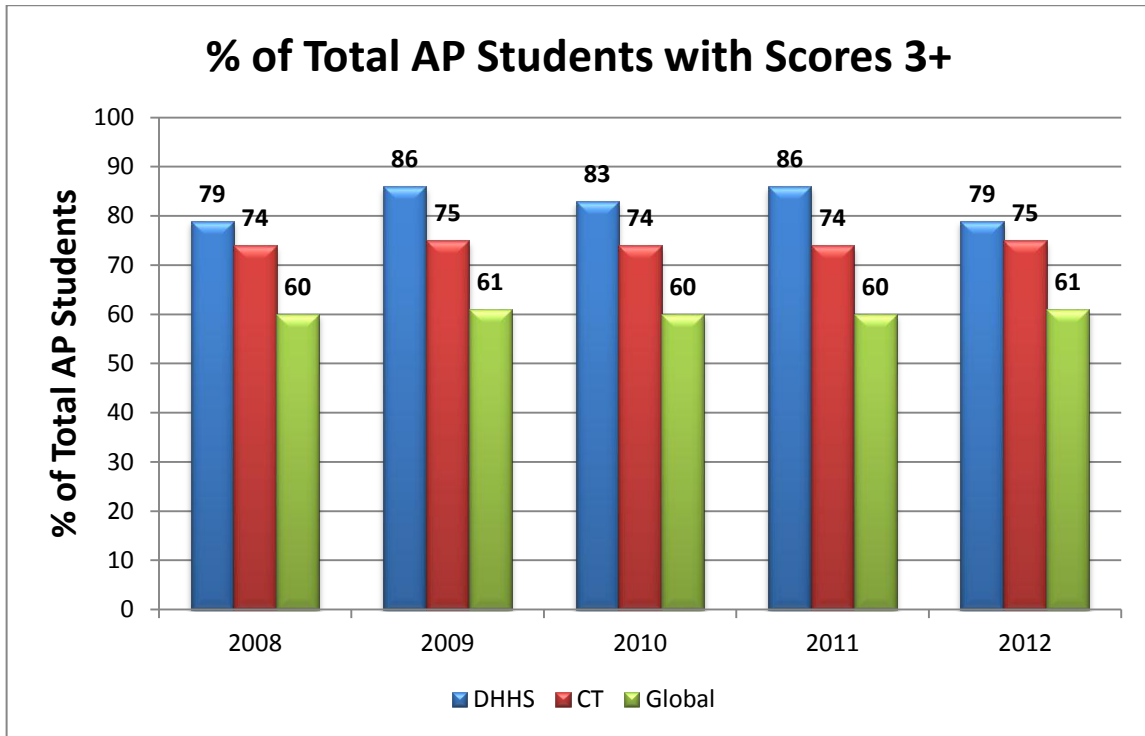
Science, Technology, Engineering and Mathematics	
Major	Number of Students
Applied Math	1
Astronomy	1
Biochemistry	4
Biology	11
Chemistry	1
Cyber Security	1
Computer Science	2
Marine Biology	2
Neuroscience	1
Engineering	11
Biomedical Engineering	4
Civil Engineering	3
Electrical Engineering	2
Mechanical Engineering	1
Environmental Science	1
Zoology	1
Physics	1
Total	48

Miscellaneous	
Major	Number of Students
Liberal Arts	2
History	4
Spanish	1
Total	7

Advanced Placement Scores Summary

School Year	2011-2012	2010-2011	2011-2012	2010-2011	2011-2012	2010-2011
Program Area	Students Enrolled	Students Enrolled	Students Taking AP Exam	Students Taking AP Exam	Number of Students Scoring 3+	Number of Students Scoring 3+
English						
Literature & Comp	0	0	13	4	12	4
English Lang & Comp	45	62	18	26	17	26
World Languages						
Spanish AP 5	55	84	43	22	17	15
French	0	0	6	2	5	2
Mathematics						
Calculus AB	27	35	2	8	2	6
Calculus BC	20	26	12	15	11	12
Statistics	48	18	6	5	3	5
Science						
Chemistry	31	38	30	30	26	32
Biology	23	23	20	20	17	13
Physics B	101	84	21	7	15	3
Physics C	15	24	1	1	1	1
Social Studies						
European History	35	25	3	1	2	1
Psychology	53	81	32	41	25	37
U.S. History	83	57	77	55	66	50
Macroeconomics	53	49	15	7	9	7
Art						
Studio Art AP	1					

AP Five-Year School Score Summary

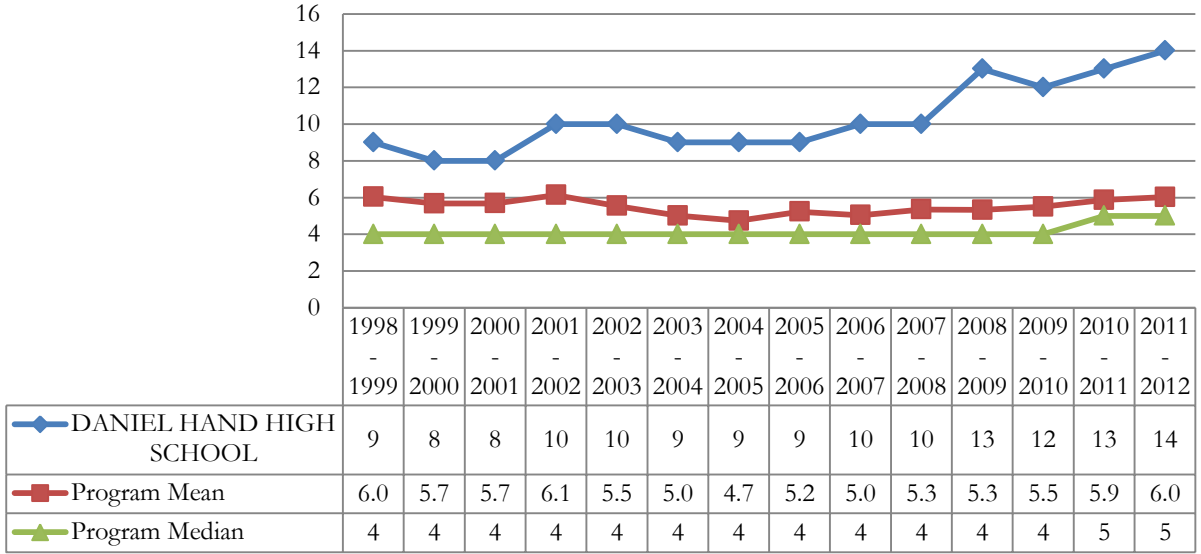


University of Connecticut: Early College Enrollment Summary

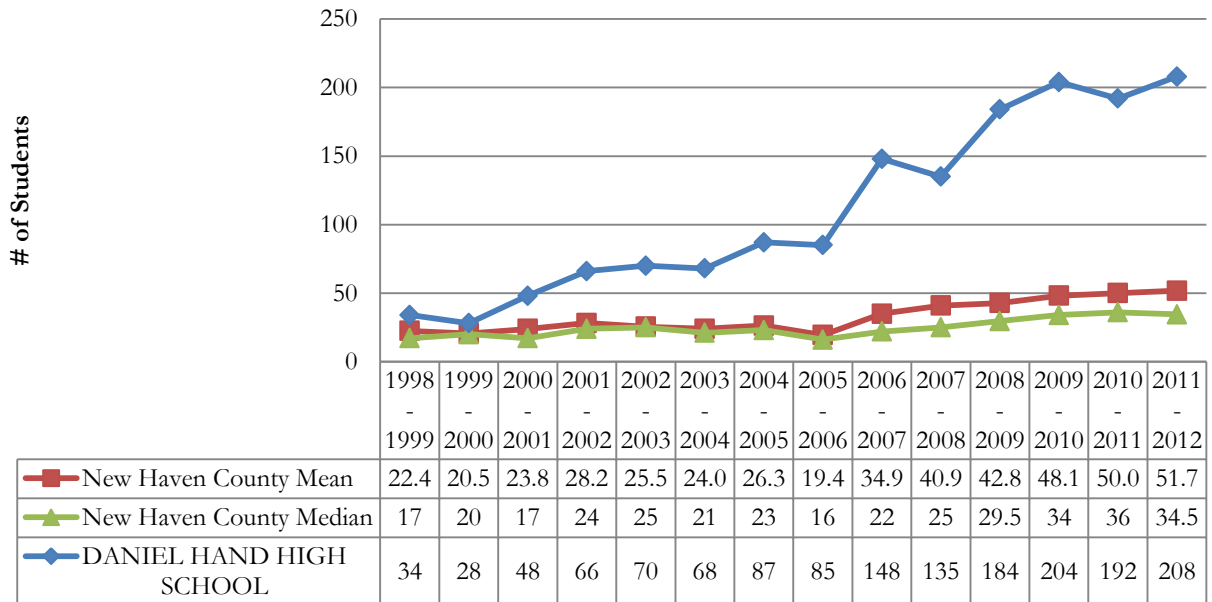
UCONN Course	Number of Students Class of 2011	Number of Students Class of 2012
English	51	42
Calculus 1- AB	33	22
Calculus 1&2 - BC	11	18
Math Modeling	32	29
Elem. Discrete Mathematics	22	20
Chemistry	38	28
Physics B	54	81
Physics C	18	10
European History	19	27
Human Dev.	11	Not Offered
Statistics	17	41
Spanish	Not offered	36
French	Not offered	10
Total	306	364

University of Connecticut: Early College Experiences

UConn Early College Experience Courses Offered



UConn Early College Experience Enrollment (County)



SAT Score Summary

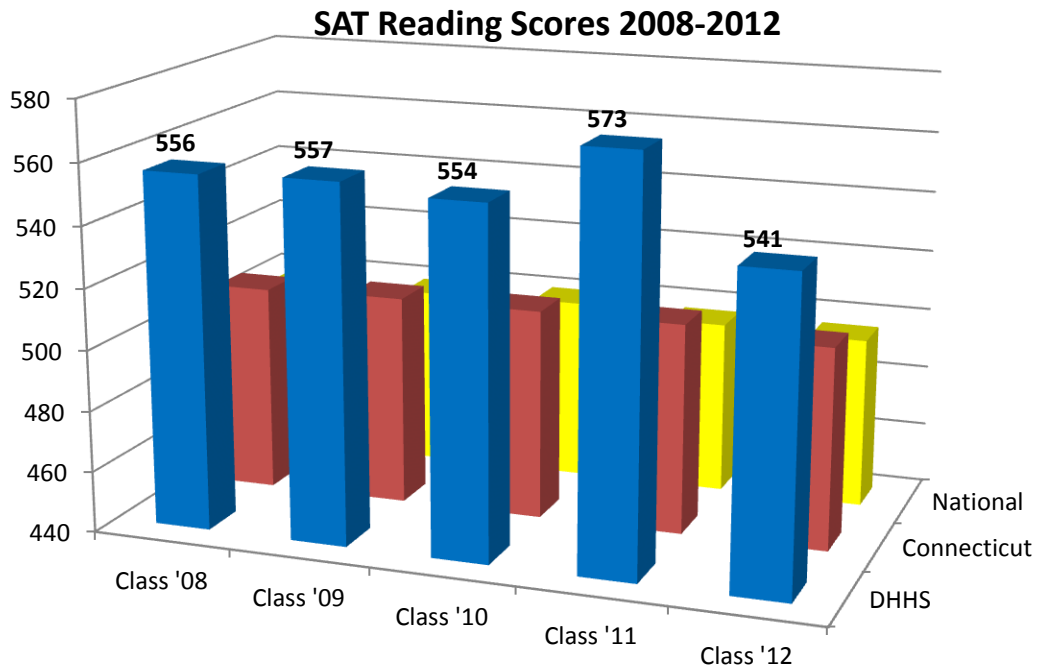
The following table indicates the Scholastic Aptitude Test (SAT) Scores for the Class of 2012:

Score Range	Critical Reading			Mathematics			Writing		
	Male	Female	Total	Male	Female	Total	Male	Female	Total
700-800	8	9	17	17	12	29	8	16	24
600-690	29	40	69	51	35	86	34	42	76
500-590	57	51	108	36	62	98	53	63	116
400-490	39	47	86	30	37	67	42	29	71
300-390	9	4	13	8	6	14	5	2	7
200-290	0	1	1	0	0	0	0	0	0
Total	142	152	294	142	152	294	142	152	294
Number of Students > Mean	71	76	147	71	76	147	71	76	147

DRG-B SAT Comparison

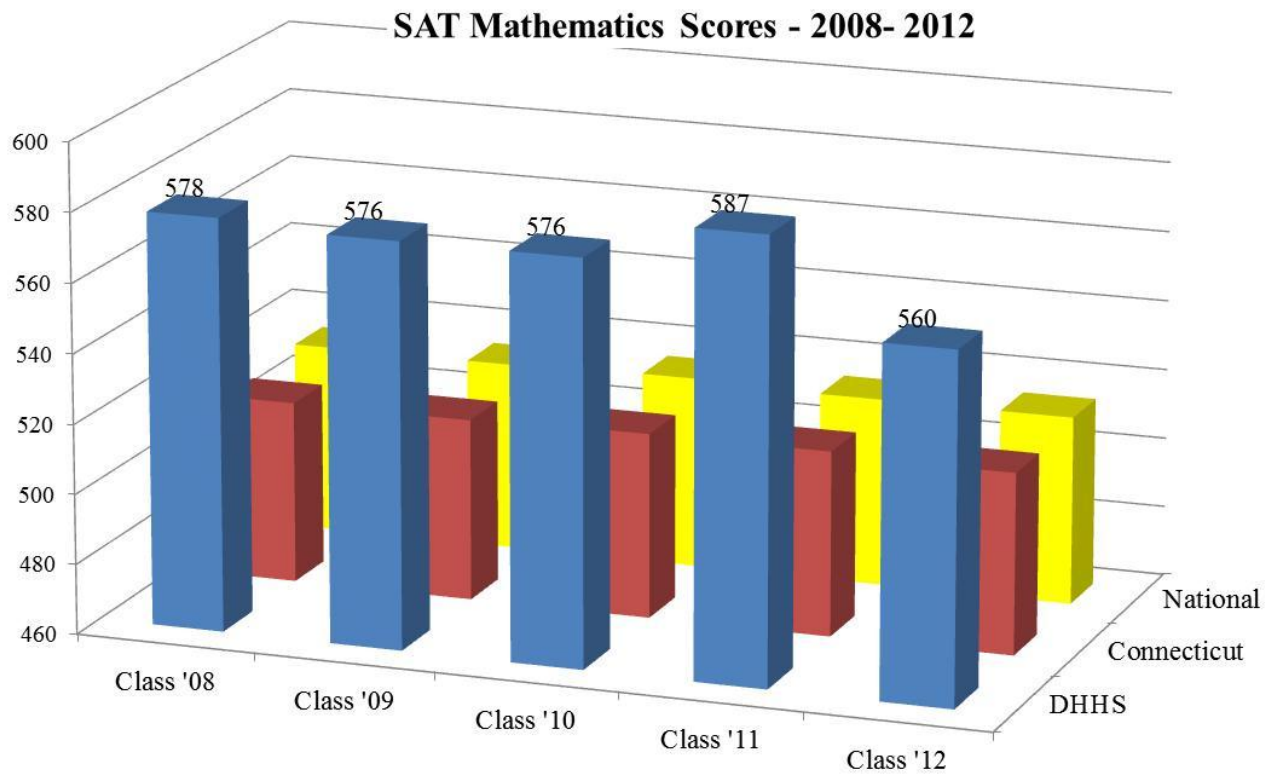
	2011 Critical Reading	2012 Critical Reading	2011 Math	2012 Math	2011 Writing	2012 Writing	2011 Total	2012 Total
Avon	568	572	591	588	563	568	1722	1728
Brookfield	530	530	535	543	530	531	1595	1604
Cheshire	545	545	553	566	539	541	1637	1652
Fairfield Ludlow	548	545	565	545	568	558	1681	1648
Fairfield Wade	536	537	551	548	551	555	1638	1640
Farmington	547	539	551	559	558	550	1656	1648
Glastonbury	559	559	580	586	556	557	1695	1702
Granby	546	548	546	564	537	541	1629	1653
Greenwich	562	563	581	578	578	576	1721	1717
Guilford	546	535	552	544	552	536	1650	1615
Madison	573	541	587	560	582	559	1742	1660
Monroe	527	516	535	543	537	522	1599	1581
New Fairfield	520	539	522	533	523	549	1565	1621
Newtown	534	536	541	553	541	539	1616	1628
Simsbury	559	569	572	579	570	574	1701	1722
South Windsor	529	523	544	552	527	537	1600	1612
Trumbull	532	525	545	544	539	536	1616	1605
West Hartford	533	520	529	518	535	520	1597	1558
District No. 5	544	539	546	544	556	555	1640	1638
District No.15	537	538	547	557	547	542	1631	1637

SAT Critical Reading Scores 2008-2012



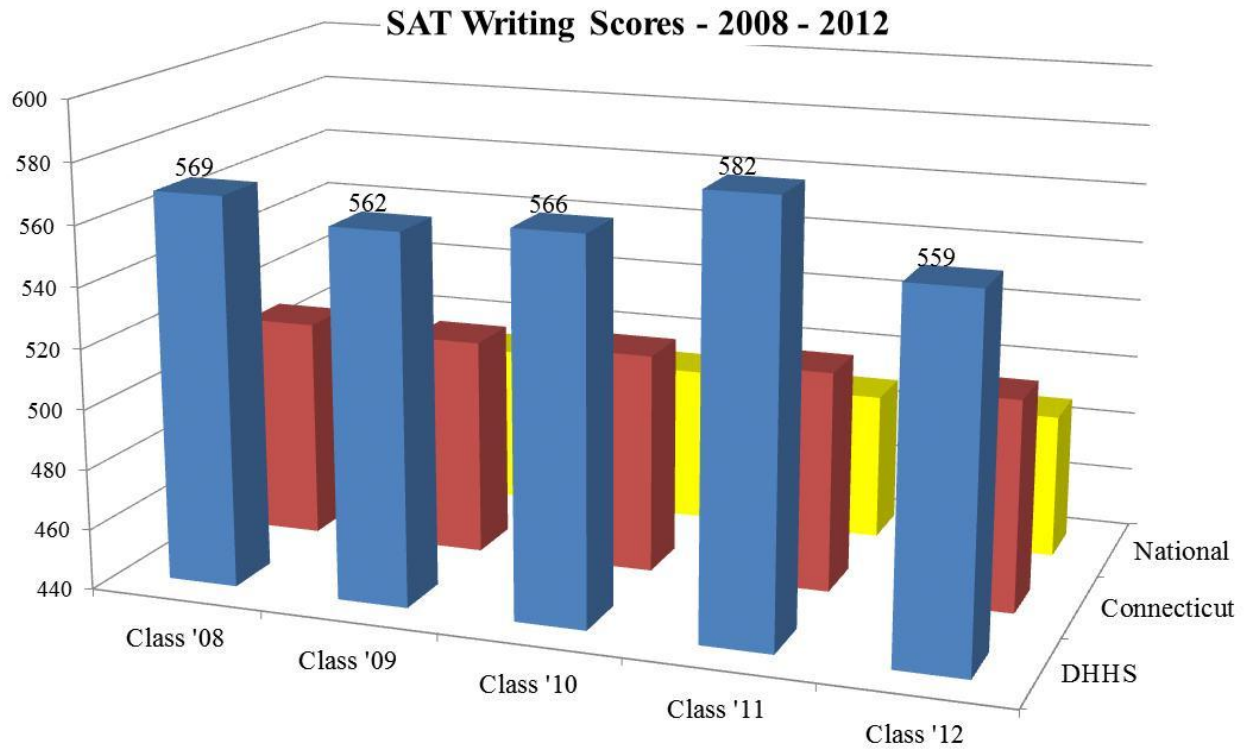
	Class '08	Class '09	Class '10	Class '11	Class '12
■ DHHS	556	557	554	573	541
■ Connecticut	508	509	509	509	506
■ National	500	499	500	497	496

SAT Mathematics Scores 2008-2012



	Class '08	Class '09	Class '10	Class '11	Class '12
DHHS	578	576	576	587	560
Connecticut	512	512	513	513	512
National	514	514	515	514	514

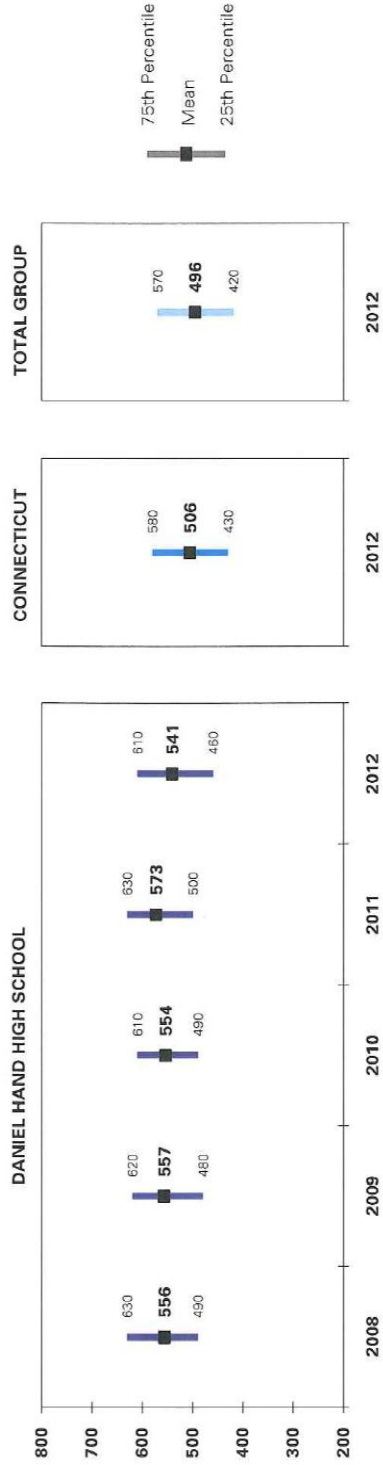
SAT Writing Scores 2008-2012



	Class '08	Class '09	Class '10	Class '11	Class '12
DHHS	569	562	566	582	559
Connecticut	513	512	513	513	510
National	494	493	492	489	488

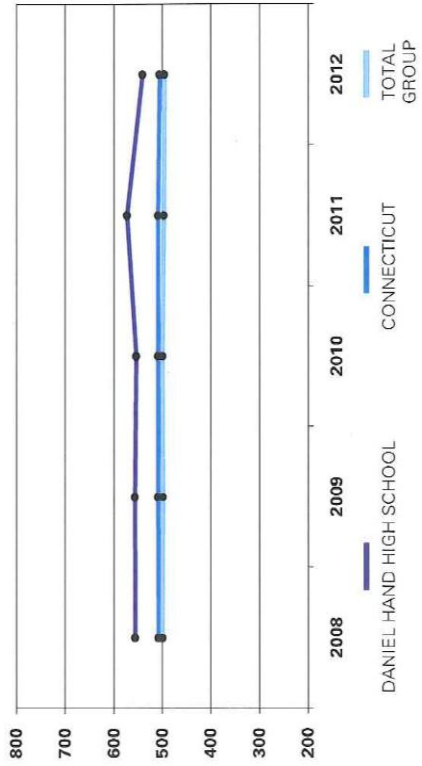


SAT® Takers: Critical Reading Mean Scores and Middle 50th Percent Range



*"Mean" and "Middle 50th Percent Range": The mean is the arithmetic average of a set of scores. To calculate the mean, the scores are totaled and the sum is divided by the number of scores. Extreme scores on the high or low end of the distribution may skew the mean in smaller sets of scores. The middle 50th percent range shows the score range between the 25th and 75th percentiles.

Mean Score Five-Year Trend



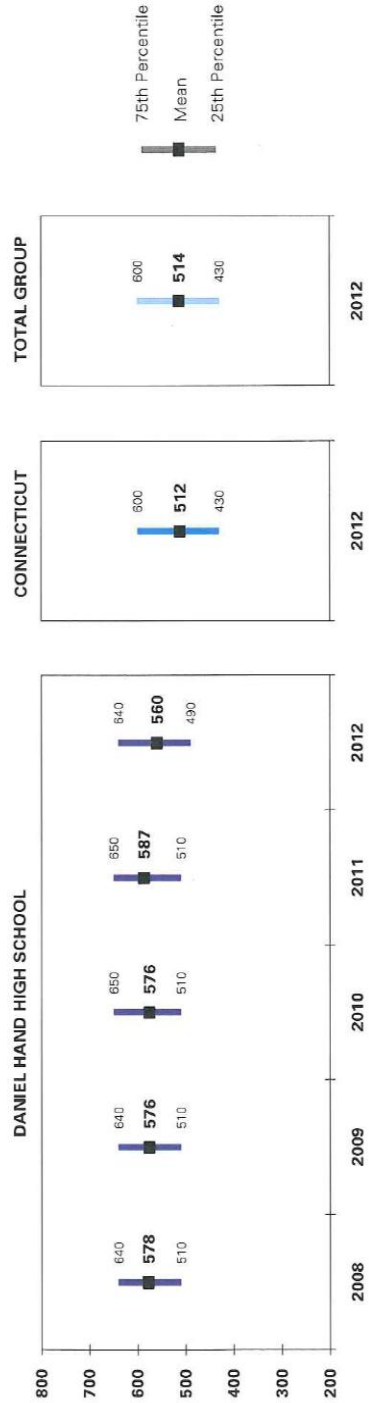
Mean Scores and Point Change by Year

	2008	2009	2010	2011	2012	Five-Yr Change
DANIEL HAND HIGH SCHOOL	556	557	554	573	541	-15
CONNECTICUT	508	509	509	509	506	-2
TOTAL GROUP	500	499	500	497	496	-4
	Change:	+1	-3	+19	-32	
	Change:	+1	0	0	-3	
	Change:	-1	+1	-3	-1	

*"Mean Scores" and "Point Change by Year": The change below each year reflects the point difference between the mean score of that year as compared to the mean score of the previous year. The "Five-Year Change" in mean score reflects the point difference between the mean score in 2012 as compared to the mean score in 2008.

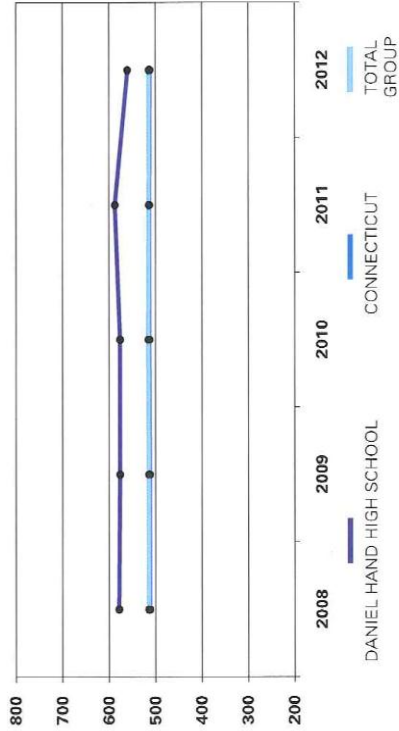


SAT Takers: Mathematics Mean Scores and Middle 50th Percent Range



"Mean" and "Middle 50th Percent Range": The mean is the arithmetic average of a set of scores. To calculate the mean, the scores are totaled and the sum is divided by the number of scores. Extreme scores on the high or low end of the distribution may skew the mean in smaller sets of scores. The middle 50th percent range shows the score range between the 25th and 75th percentiles.

Mean Score Five-Year Trend



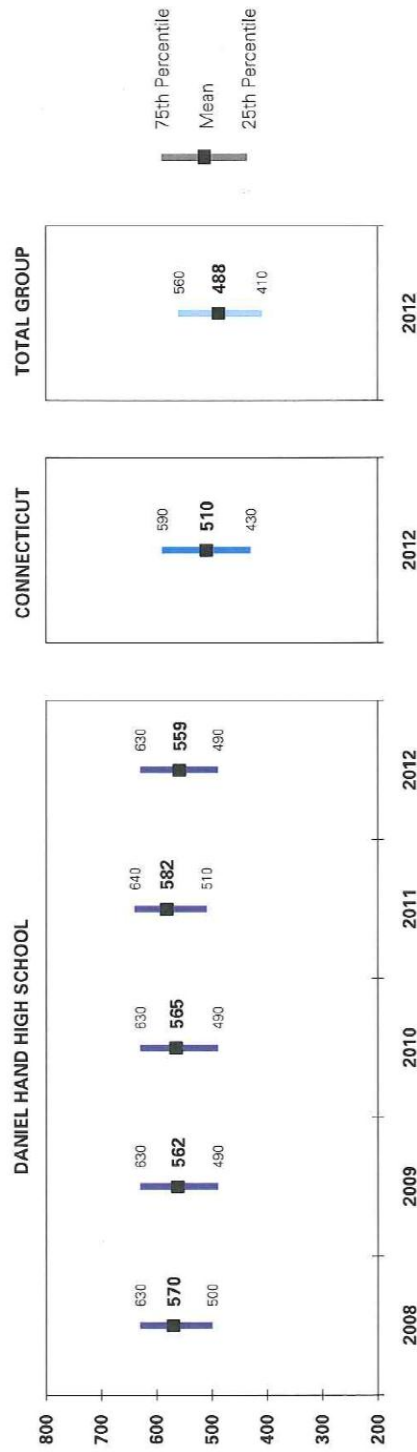
Mean Scores and Point Change by Year

	2008	2009	2010	2011	2012	Five-Yr Change
Daniel Hand High School	578	576	576	587	560	-18
Connecticut	512	512	513	513	512	0
Total Group	514	514	515	514	514	0
		Change:				
		-2	0	+11	-27	
		Change:				
		0	+1	0	-1	
		Change:				
		0	+1	-1	0	

"Mean Scores" and "Point Change by Year": The change below each year reflects the point difference between the mean score of that year as compared to the mean score of the previous year. The "Five-Year Change" in mean score reflects the point difference between the mean score in 2012 as compared to the mean score in 2008.

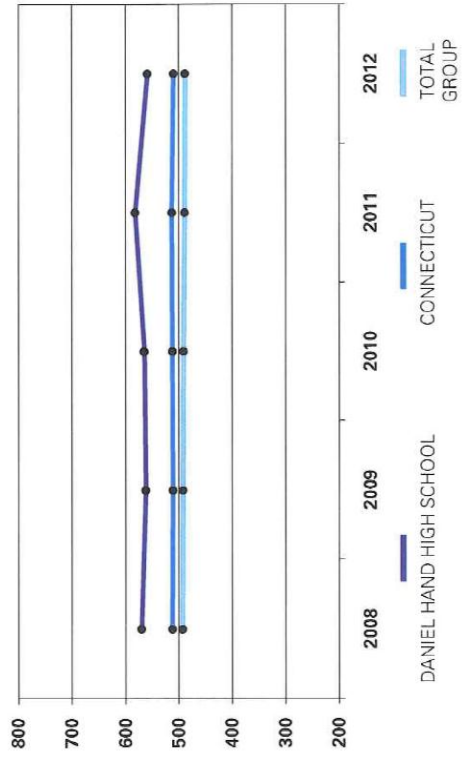


SAT Takers: Writing Mean Scores and Middle 50th Percent Range*



Mean and *Middle 50th Percent Range*: The mean is the arithmetic average of a set of scores. To calculate the mean, the scores are totaled and the sum is divided by the number of scores. Extreme scores on the high or low end of the distribution may skew the mean in smaller sets of scores. The middle 50th percent range shows the score range between the 25th and 75th percentiles.

Mean Score Five-Year Trend



Mean Scores and Point Change by Year

	2008	2009	2010	2011	2012	Five-Yr Change
Daniel Hand High School	570	562	565	582	559	-11
Connecticut	512	511	512	513	510	-2
Total Group	493	492	491	489	488	-5

Mean Scores and *Point Change by Year*: The change below each year reflects the point difference between the mean score of that year as compared to the mean score of the previous year. The *Five-Year Change* in mean score reflects the point difference between the mean score in 2012 as compared to the mean score in 2008.

* In March 2005 a writing section was added to the SAT. A small number of students in the 2008 cohort will not have writing scores. These students took the SAT before the introduction of the writing section.

ACT Trends

Total Tested			English		Mathematics		Reading		Science		Composite	
Grad Year	Local	State	Local	State	Local	State	Local	State	Local	State	Local	State
2007	68	6,651	23.8	23.2	24.0	23.2	23.5	23.6	22.5	22.4	23.6	23.2
2008	102	8,159	24.1	23.2	24.6	23.3	23.7	23.6	22.9	22.3	23.9	23.3
2009	134	9,240	24.7	23.6	25.1	23.5	25.1	24.0	23.6	22.6	24.8	23.5
2010	142	10,453	25.3	23.8	25.6	23.5	24.9	23.9	24.2	22.9	25.1	23.7
2011	147	10,809	25.6	25.0	25.9	23.9	25.9	24.9	24.3	23.1	25.6	23.9
2012	196	11,192	24.4	23.9	24.3	23.8	24.2	23.9	23.2	23.2	24.2	23.8

Average ACT by Gender

Student Group	Gender	Average ACT Scores				
		English	Math	Reading	Science	Composite
Local	Males	23.8	24.8	23.2	23.0	23.8
	Females	25.0	23.9	25.1	23.3	24.4
State	Males	23.4	24.5	23.8	23.7	23.9
	Females	24.3	23.3	24.1	22.8	23.7

**Madison Public Schools
Board of Education Meeting
November 13, 2012
Town Campus Hammonasset Room**

Meeting Minutes

1. Call to Order / Attendance

The public meeting of the Board of Education was called to order by Chairman Frey at 7:33 p.m. Chairman Frey led the Pledge of Allegiance.

Present: John Dean; Jean Fitzgerald; Debra Frey; Pamela Meier; Robert Ruggiero; Ryan Suerth; Cindy Wood.

Also Present: Thomas R. Scarice, Superintendent, Anita L. Rutlin, Assistant Superintendent for Curriculum, Instruction, and Assessment, district administrators and community members.

2. School / Community Session

2.1. Recognitions:

In honor of American Education week, November 11-17, 2012, Superintendent Scarice acknowledged and commended the work and achievements of educators, support staff and students in the district and provided some background and highlights:

The first observance of American Education Week occurred in 1921 based upon a proposal from the National Education Association and the American Legion. The intent was to raise awareness and generate support for public education. American Education Week is celebrated annually during the week prior to Thanksgiving.

National Educational Support Professionals Day was celebrated on November 14, 2012, to honor all support professionals who “provide invaluable services and enable students to learn in positive, supportive environments.” Chairman Frey also added her appreciation on behalf of the Board.

The Superintendent /Student Leadership Award, sponsored by the Connecticut Association of Public Schools Superintendents (CAPSS), is based on community service, academic prowess and leadership services to the school community. This year’s recipients are DHHS students Demiana J. Azmy and Matthew Griffin. Principal Barbara Britton introduced the students and provided a brief summary of their impressive accomplishments. She then presented them with an award. Both students will be recognized on November 26, 2012 at a luncheon at the Saybrook Point Inn, along with other regional superintendents and students.

2.2 Public Participation

- Sarah Kyrz, Lovers Lane, encouraged the Board to move the polling location from Brown Middle School to the North Madison Fire House and to have school in session on Election Day which would allow for more continuity in learning.
Chairman Frey stated that the Board shares her concern explaining that the location of polling is determined by town officials. The Board has made requests to seek an appropriate alternative location and will report back when all investigative work is done.
- Jessica Buller, Windsor Court, spoke in favor of Full-Day Kindergarten. She feels strongly that it is the right thing for our town to transition to neighborhood schools.
- Dave Anderson, Lenore Drive, also spoke in support of Full-Day Kindergarten. He commended the power point presentation posted on the website and encouraged all to read it. He understands we are in difficult economic times but hopes the Board will find the resources to support Full-Day Kindergarten.
- Deidre Keating, Dream Lake Drive, spoke in support of keeping the Pre-school Program at the Town Campus Learning Center (TCLC).
- Christine McKenney, Lenore Drive, also spoke in support of keeping the Pre-school Program at the Town Campus Learning Center (TCLC) stating that the building is not only a school but is a second home to many students and it is important to their development.

3. Student Representative's Report

Jane Butler and John Oviaan, Daniel Hand High School Students

Ms. Butler and Mr. Oviaan reported on the following:

- The Safari Theme - Homecoming Dance on Friday, November 9th
- Exams have been moved to the first week of December, Dec 4th - 6th
- Next trimester begins on Friday, December 7th
- Boys Varsity Soccer State Quarter Finals, Wednesday, November 14th in
- The Drama Production, Sherlock Holmes, is November 29th, 30th and Dec. 1st
- Veteran's Day was celebrated at DHHS. Encore sang the National Anthem and the Band performed, "America the Beautiful." Veterans were invited to a breakfast hosted by the History Department.

Chairman Frey commented on the controversial decision to have school in session on Veteran's Day. She feels it is most meaningful and more of an honor for our Veterans to attend activities within the school so that students may actively participate in the recognition.

Superintendent Scarice attended many of the school celebrations and extended his gratitude to our Veterans.

4. Superintendent's Report

4.1 Follow-up: Full- Day Kindergarten Research

Superintendent Scarice reviewed the discussion regarding Full- Day Kindergarten presented at the October 16th meeting. The primary purpose of the presentation was twofold: provide the Board with the instructional vision developed by the Kindergarten Committee, and to ask the Board to consider including Full- Day Kindergarten as a budget assumption during the budget building process.

In response to Mr. Dean's concern about balancing the needs of the system with financial realities and responsibilities, Superintendent Scarice assured the Board that the committee will continue to look for cost efficiencies wherever possible.

The Superintendent also took the opportunity to clarify a misperception about the purpose of a full- day program. He explained that increasing student outcomes is not the point; the full –day model is intended to allow time to teach outcomes more appropriately. The mission is to support the whole child.

Assistant Superintendent Anita Rutlin researched Full-Day Kindergarten programs recently implemented in other districts and that information was shared with the Board.

Several Board members commented on the information:

- Mr. Suerth emphasized a Full-Day model provides increased academic/instructional time;
- Ms. Fitzgerald stated that it's about the depth of the experience, not the breadth. The Full-Day model allows teachers flexibility to enhance the experience;
- Ms. Meier shared her personal experience with twins stating her belief that the Full-Day model allows children the opportunity to practice what they learn.
- Chairman Frey reported that implementation of Full-Day Kindergarten has been considered for more than a decade. Recommendations have always considered it to be the right thing to do but not feasible due to space or cost concerns.

In summary, Superintendent Scarice repeated that the full-day model allows time to teach outcomes more appropriately concluding that students do well in school when there is time to develop leadership, academic prowess and participation in community service.

4.2 Report: Town Campus Learning Center

Superintendent Scarice introduced Ms. Cynthia Twiss, Director of Special Education and Town Campus Learning Center Principal. Ms. Twiss led the committee charged with a comprehensive review of the facility including the pros and cons for closing it and relocating the services to another location. The two key findings are that "the TCLC is a separate special place providing a nurturing safe community for children with needs," and, it is the most

financially viable alternative for the district. Mrs. Twiss thanked committee members including Ms. Meier, Ms. Daniels and Mr. McMinn for their work. Superintendent Scarice added that this exercise began in June starting with a comprehensive generation of questions leading to the conclusion it would be very unwise to move the program.

4.3 Discussion: 2013-2014 Budget Assumptions

Superintendent Scarice discussed the concept of budget assumptions prior to the Board deliberating and taking action on a list of assumptions at a future meeting. He stated that there are a number of reasons to implement this strategy. By adopting broad assumptions prior to taking action, the Board should not anticipate any surprises. The assumptions will outline key drivers to the budget, some obvious, e.g. honoring contractual agreements, and some innovative. It gives the Board the opportunity to make broad value judgments and informs other Town Boards about our values and priorities. By adopting clear budget assumptions it establishes transparency within the budget.

Superintendent Scarice informed Board members and others in attendance that there will be an Education Summit on November 28th at 7:00 p.m. at the Madison Senior Center. The District has created a vision statement and the next step is to share it with the community for their comments and input. Sixty invitations were mailed to community leaders. Superintendent Scarice looks forward to a lively two-hour discussion.

Chairman Frey noted that the Superintendent has had discussion regarding the December 4th Board of Education meeting and the potential of moving the venue to one of the auditoriums in town. A large turnout is anticipated to learn about the research on teacher evaluation conducted by the Superintendent's Advisory Council.

5. Board Members' Comments

No comments were offered.

6. Reports from Board Committees / Liaison

6.1. Planning Committee

Members: Jean Fitzgerald, Chair
Bill Clorite
Pam Meier

Committee Chair Jean Fitzgerald reported that the committee has not meeting since last Board meeting. Working on Full- Day Kindergarten, Teacher Evaluations and the Town Campus Learning Center. Next meeting is 11/14/12 at 7:30 a.m.

6.2. Personnel Committee

Members: John Dean, Chair
Cindy Wood, Vice Chair
Robert Ruggiero

Committee Chair John Dean reported that a meeting is scheduled on 11/14/12 with the Teachers Union (MEA). It's a combination meeting including negotiations and mediation. There will be a state mediator on site to assist with the process.

6.3. Policy Committee

Members: Seth Klaskin, Chair
Ryan Suerth
Cindy Wood

Discussion: Potential Revision of the 2012-2013 School Year Calendar

Ms. Wood reported: Due to storm "Sandy" and the loss of power, schools were closed for five days. She asked for approval of adjusting the school year calendar. The recommendation is to include January 2, 2013 as an instructional day for students and move the scheduled professional development day to the end of the school year.

6.4. Finance Committee

Members: Bill Clorite, Chair
Jean Fitzgerald
Cindy Wood

Ms. Fitzgerald reported that the Finance Committee is working on budget assumptions, focusing on contractual obligations and the timeline of the budget process in order to define expectations and maintain transparency throughout the process. They are also working on how to move the district forward taking into consideration the Board's vision.

6.5. Ad-Hoc Community Relations Committee

Members: Ryan Suerth, Chair
Pam Meier
Cindy Wood

Chairman Ryan Suerth spoke of the importance of reaching out to the community and keeping all informed. The Board "Bridge" Newsletter will be refined and issued four times a year. The next issue will be available December 14, 2012 and will include content from the committee chairs.

6.6. LEARN Liaison

Liaison: Robert Ruggiero
No Report

7. Audience Response to Information Presented

No comments were offered.

8. Consent Agenda

8.1. Bills Payable: \$30,118.36 – 2011-12 Budget and \$970,113.86 – 2012-13 Budget

Chairman Frey discussed that Board members had pending questions regarding charges related to G10527 in the 2012-13 List of Bills that could not be answered prior to this evening's proposed approval and a request has been made to remove this item from the consent agenda pending clarification.

MOTION: by Fitzgerald, seconded by Wood to amend the Consent Agenda by removing \$182.50 from the 2012-2013 Bills Payable and revising the Grand Total on page 60 to \$969,931.36

AYES: Dean, Fitzgerald, Frey, Meier, Ruggiero, Suerth, Wood

NAYS: None

MOTION CARRIED: 7-0

8.2. Line Transfers: \$50,859.96

8.3. Budget Expenditure Report as of November 7, 2012

MOTION: by Wood, seconded by Meier, to approve the Consent Agenda as amended.

AYES: Dean, Fitzgerald, Frey, Meier, Ruggiero, Suerth, Wood

NAYS: None

MOTION CARRIED: 7-0

9. Action Item: Minutes of the October 16, 2012 Board of Education Meeting

MOTION: by Dean, seconded by Ruggiero, to approve the minutes of the October 16, 2012 Board of Education Meeting.

AYES: Dean, Frey, Ruggiero, Suerth, Wood

NAYS: None

Abstentions: Fitzgerald, Meier

MOTION CARRIED: 5-0

10. Action Item: 2013-2014 Budget Assumptions

MOTION: by Mr. Ruggiero, seconded by Ms. Fitzgerald, to direct the Superintendent to include, as part of the 2013-2014 Budget Assumptions, the implementation of a Full-Day Kindergarten program within a neighborhood model.

AYES: Dean, Fitzgerald, Frey, Meier, Ruggiero, Suerth, Wood

NAYS: None
MOTION CARRIED: 7-0

Chairman Frey requested that action on the revision to the 2012-2013 School Calendar be added to the agenda.

MOTION: By Wood, seconded by Fitzgerald, to add to the agenda a motion to approve the Administration's recommended revision to the 2012-2013 School Calendar to include January 2, 2013 as an instructional day for students and move the scheduled professional development day on January 2, 2013 to the end of the school year.
AYES: Dean, Fitzgerald, Frey, Meier, Ruggiero, Suerth, Wood
NAYS: None
MOTION CARRIED: 7-0

11. Action Item: Revision to the 2012-2013 School Calendar

MOTION: by Wood, seconded by Fitzgerald to approve the Administration's recommended revision to the 2012-2013 School Calendar to include January 2, 2013 as an instructional day for students and move the scheduled professional development day on January 2, 2013 to the end of the school year.
AYES: Dean, Fitzgerald, Frey, Meier, Ruggiero, Suerth, Wood
NAYS: None
MOTION CARRIED: 7-0

12. Old Business

No old business was discussed.

13. New Business

No old business was discussed.

14. Future Agenda Items

15. Meetings / Dates of Importance

Meetings / Dates of Importance	Date	Time	Location
Planning Committee Meeting	November 14, 2012	7:30 AM	Conference Room B
Finance Committee Meeting	November 15, 2012	7:30 AM	Conference Room B
CABE / CAPSS Convention	November 16-17, 2012	8:00 AM	Mystic Marriott
Policy Committee Meeting	November 27, 2012	5:30 PM	Conference Room B
Board of Education Meeting	November 27, 2012	7:30 PM	Hammonasset Room

16. Adjournment

MOTION: by Dean seconded by Wood to adjourn the meeting at 9:35 p.m.
AYES: Dean, Fitzgerald, Frey, Meier, Ruggiero, Suerth, Wood
NAYS: None
MOTION CARRIED: 7-0

Meetings / Dates of Importance	Date	Time	Location
Planning Committee Meeting	November 28, 2012	7:30 a.m.	Conference Room B
Madison Education Summit	November 28, 2012	7:00 p.m.	Senior Center
Superintendent's Brown Bag Lunch	November 30, 2012	12:00 noon	Scranton Library
Policy Committee Meeting	December 4, 2012	5:30 p.m.	Brown Middle School Conference Room
Board of Education Meeting	December 4, 2012	7:30 p.m.	Brown Middle School Auditorium