



---

A meeting of the Board of Trustees of the Bryan Independent School District will be held on Monday, May 5, 2025, beginning at 12:00 PM in the Boardroom of the Administration Building, 801 South Ennis Street, Bryan, Texas 77803, where a quorum of the Board of Trustees will be present.

The subjects to be discussed, considered, or upon which any formal action may be taken are listed below. Items do not have to be taken in the order shown on this meeting agenda. A closed meeting may be held at any time during the open meeting as authorized by various sections of the Texas Government Code. When this occurs, a formal statement will be made by the president or presiding officer of the Board of Trustees.

**1. Call to Order**

**2. Welcome**

**3. Spotlight**

3.A. Bryan ISD Selected for the Texas Strategic Leadership Program

**Presenter:** Associate Superintendent of Teaching and Learning, Dr. Barbara Ybarra



**TEXAS  
STRATEGIC  
LEADERSHIP**

**Welcome to TSL!**



**esc6**  
★★★★★  
Dedicated to Serve



# We will align to research-based best practices in the Effective District Framework

Superintendents and their leadership teams will leave the process with tailored...

...aligned to research-based strategies from the Effective District Framework



**Landscape Analysis** illuminating current state of the district



**Strategic Plan** with prioritized, research-based strategies to pursue



High-level plan for **implementation, performance management, systems alignment** to execute priorities



Forward movement on **stakeholder alignment, change management**

Planning and Performance Management

Talent Systems

Integrated Student Supports

Academic Experience

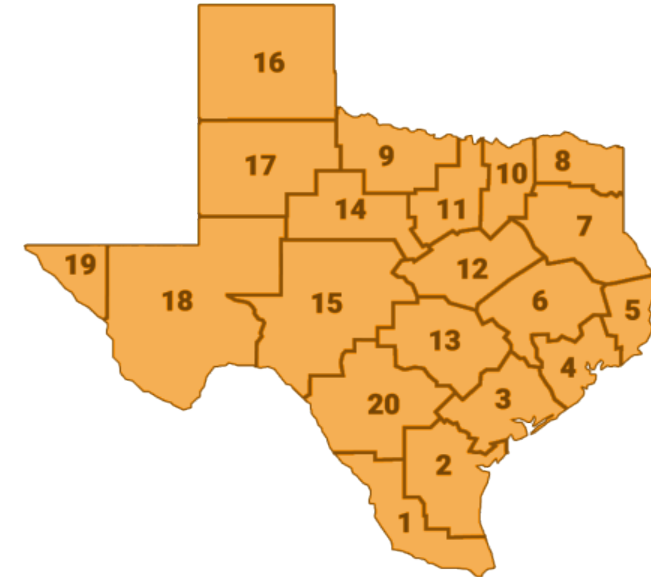
Instructional Capacity Building

Finance and Operations



# Identification and Selection Process

- Competencies of a TSL Superintendent
  - Strategic Thinker
  - Growth-minded leader
  - Collaborative Partner
- Competencies of a TSL School Board
  - Committed to Strategic Governance
  - Engaged with Purpose
  - Focused on Student Success
- Interview with TEA
- TEA approval to participate



- Only 3% of Texas Public School Districts are selected to participate in TSL
- 2-3 per Educational Service Center Region



# Being part of TSL means we can access multiple supports as a district

**1:1 Executive Coaching** and facilitation for superintendent and leadership team

**Statewide Learning Labs / Exemplar Visits** to see what “great” looks like across EDF strategies

**Cohort Model** for peer connection and learning opportunities

**Landscape Analysis** to understand current state of the district  
**(Effective District Framework-based)**

**Planning & Performance Management Supports** to drive strong implementation, continuous improvement



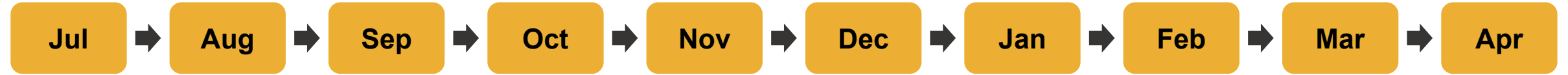
# TSL Beliefs about Data

---

- We believe that all stakeholders operate with the **best interests for students** in mind
- We believe that **data is a flashlight** and not a hammer
- We will **honor strengths and celebrate progress** and growth as much as we **identify areas for growth** and improvement
- We will be **solutions oriented and supportive** as partners in overcoming challenges and barriers
- We believe continuous improvement and performance management will shape TSL supports to be responsive to what **districts need, want and deserve to achieve ambitious student outcomes**



# We will go slow to go fast in a unique, tailored way for your district



“Let’s gather stakeholder input”

“Let’s walk classrooms and campuses”

“Let’s utilize insights to determine envisioned student experience”

“Let’s gather stakeholder feedback on the plan”

“What are key milestones and benchmarks along the way”

“Tell me about your district”

“Let’s see other districts together”

“What does the landscape analysis data show”

“Let’s set our student outcomes goals, strategic priorities, aligned initiatives”

“What are leading metrics and indicators to measure progress”

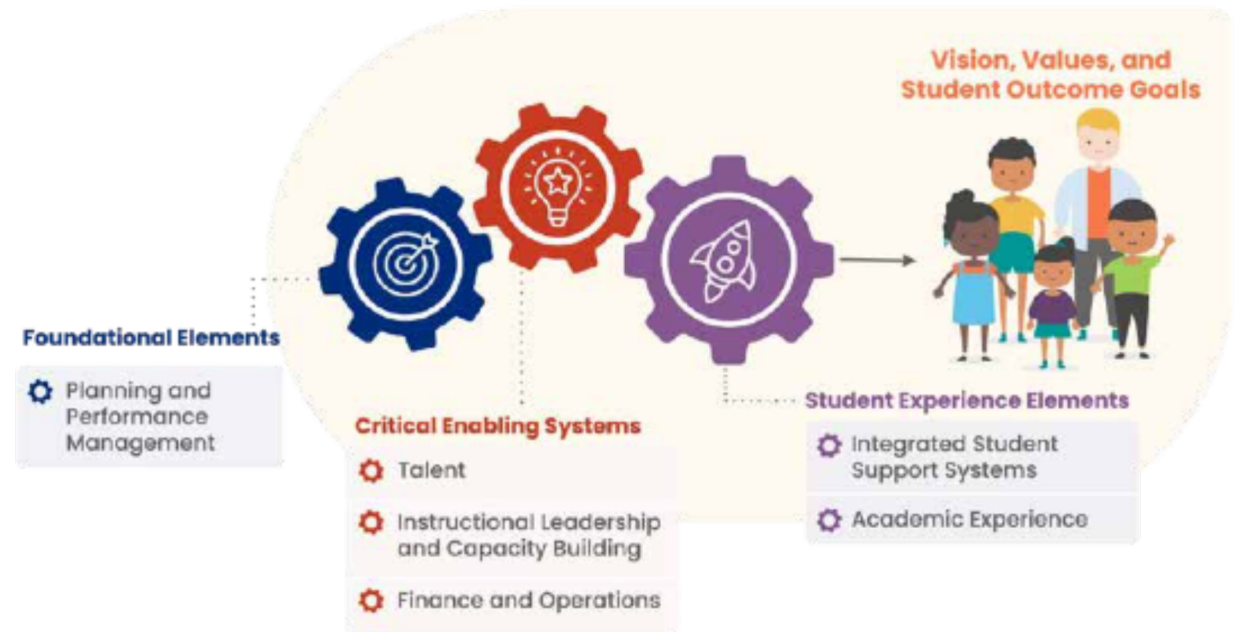
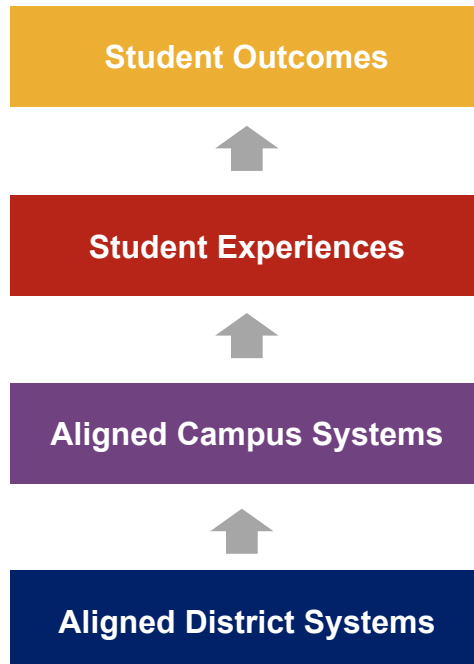
“Let’s bridge to capacity builder supports to begin implementation”



# We must design district systems to achieve the envisioned student experience

If we believe a strong student experience is the core driver of student outcomes...

...then we must “backward design” and align all critical systems to our envisioned student experience





# Region 6 ESC Contacts

---



David Manley

dmanley@esc6.net



Jay Smith

jsmith@esc6.net

## 4. Information Items

4.A. Strategic Plan Update

**Presenter:** Deputy Superintendent, Dr. Brian Merrell

BRYAN INDEPENDENT  
SCHOOL DISTRICT

**STRATEGIC PLANNING/  
BOND STEERING  
COMMITTEE**



**Board Meeting**

May 5, 2025

# OUR COMMITTEE MEMBERS

- Nearly 50 citizens committed to the students of Bryan ISD
- Represent a diverse cross section of our district
- Bring varying perspectives from our communities



# Strategic Committee Meetings

March 20, 2025	April 24, 2025
March 27, 2025	May 1, 2025
April 3, 2025	May 8, 2025
April 10, 2025	May 15, 2025
April 17, 2025	****Additional dates in June



# STRATEGIC PLANNING TOPICS

## Department Updates

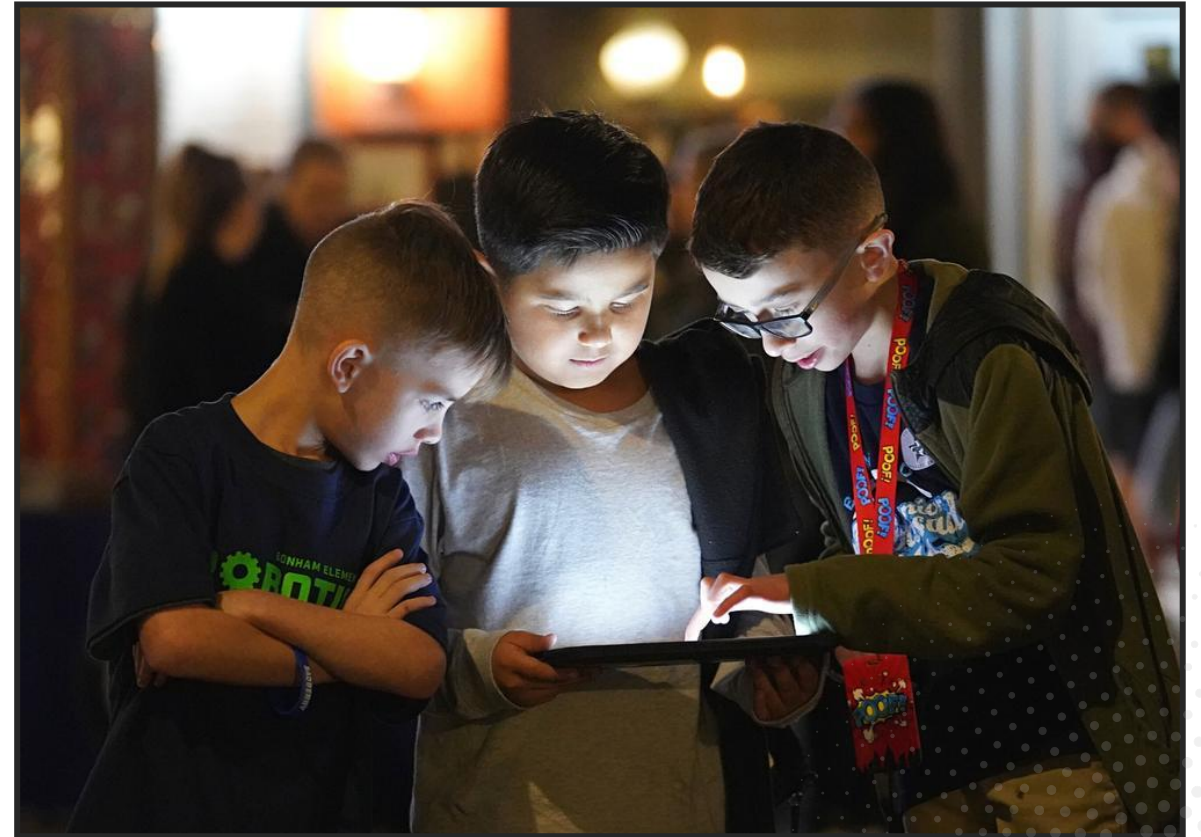
- Athletics
- Career and Technology Education
- Fine Arts
- Safety
- Technology
- Transportation

## Facility Condition Assessments

- CTEC and CTE District-Wide
- Bryan High School
- Merrill Green Stadium

## Demographer

## Construction Costs and Financial Capacity



# STRATEGIC PLANNING EVOLVED

## Strategic Planning Committee



## Bond Steering Committee

The Bryan ISD (BISD) Bond Steering Committee represents a broad cross-section of parents, students, staff, and community members who will work in an advisory capacity to the administration regarding long range planning and a future Bond.

# BOND STEERING CHARGE

---



- **Review information** related to the District's facility needs, enrollment trends, and educational vision
  - **Prioritize student needs**
  - Develop a **fiscally responsible plan**
  - Work with the "**big picture**"
  - **Provide input** regarding District's facilities ability to support education in your community
  - Provide insight into what the **broader community** might support
  - Serve as **ambassadors** for the process and the proposed plan
- ...and hopefully **have fun!**

# PROCESS



Introduction,  
Framework,  
Goal-Setting, Public  
School Finance

Demographics, Facility  
Conditions, Departmental  
Needs, Financial Capacity &  
Tax Impact Scenarios

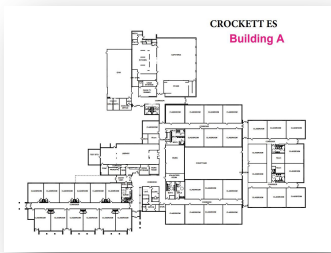
Conceptual plans,  
options, bond proposal

Reaching consensus,  
final proposal for Board  
of Trustees  
consideration

Strategic Planning

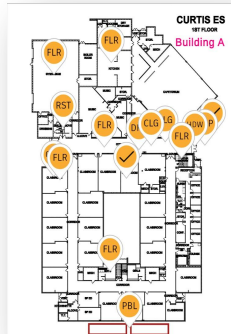
Bond Steering

# PHASES OF FACILITY PLANNING



## Collecting Assets

- Floor plans
- Site aerials
- Facility inventory
- District needs
- District priorities



## Assessing Current Conditions

- Study of Facilities:
  - Architecture
  - MEPT
  - Civil
  - Sports Architecture
  - Building Envelope



## Meeting with Stakeholders

- Principals
- Administrators
- Department Leaders
- Strategic Planning Committee



## Determining Needs

- Review facility conditions indexes
- Review costs

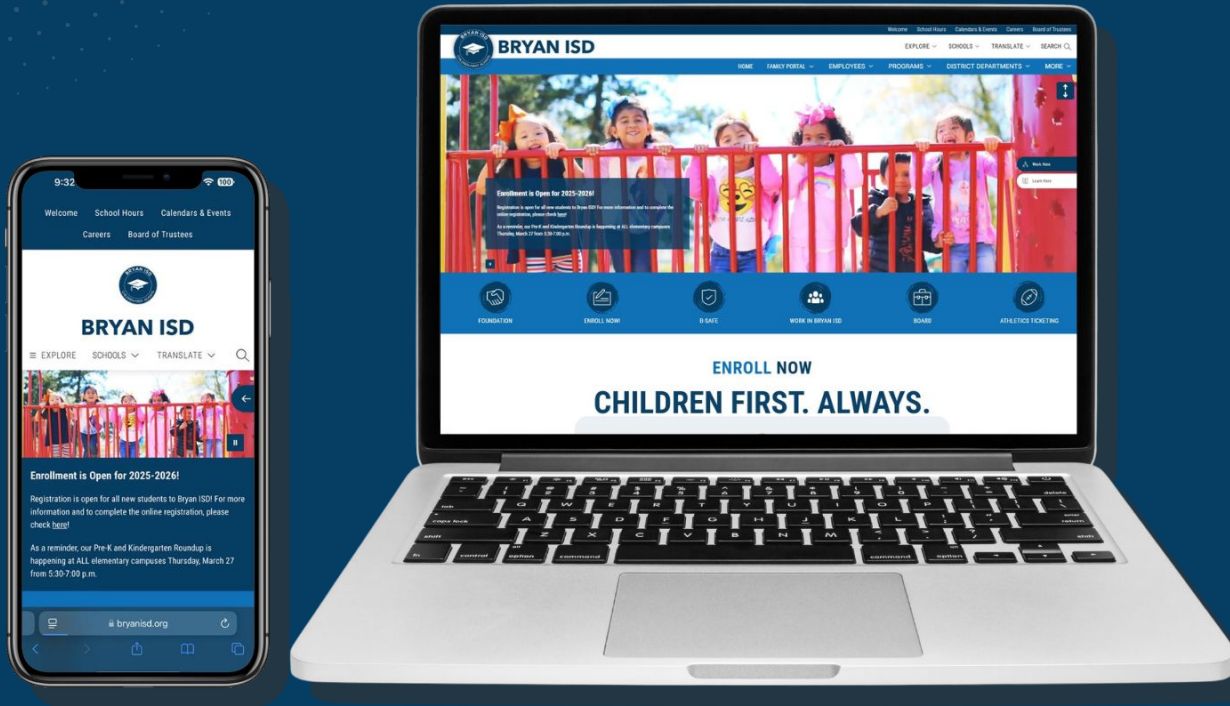


## Developing Proposed Plans or Projects

- Use data to develop a Long-Range Facilities Master Plan to guide how the district maintains and updates facilities
- Development of a bond plan recommendation, if necessary

 **YOU ARE HERE**

# COMMUNICATIONS



Agendas, presentation slides, and supplemental information will be available online accessible through the District's homepage.

[www.bryanisd.org](http://www.bryanisd.org)

**THANK YOU!**

#### 4.B. Budget Update

**Presenter:** Assistant Superintendent of Business Services, Kevin Beesaw and Norma Friddle



# Budget Update

---

May 5, 2025



# Budget Goals



## Support High-Quality Instruction and Resources



## Retain & Recruit a High-Quality Workforce

*By creating more streamlined and efficient academic and operation models, the district would be positioned to leverage future funding sources to be used for compensation and benefits that both retain and attract a high-quality workforce.*



## Maintain a Healthy Fund Balance



## Safety & Security



# Budget & Legislative Timeline

## 2022–2023 Budget



### District Budget

With rapidly rising inflation and no new revenue from the state, the district anticipated a deficit budget of approximately \$4.05 million.



### Jan. 2023 TX Legislature

Texas Legislature meets, surplus budget, no action on public school finance due to the failure of voucher legislation.

## 2023–2024 Budget



### District Budget

With no change in the basic allotment, the district anticipated a deficit budget of approximately \$4.64 million.



### TX Legislature Special Sessions

4 special sessions – voucher bills put forward while holding on public school finance  
No action taken – \$4.5 **BILLION** held at the state level

## 2024–2025 Budget



### District Budget

No action from TX Legislature, ESSER funding ended, Record district shortfalls across the state.  
Anticipated deficit of \$6.2 million.



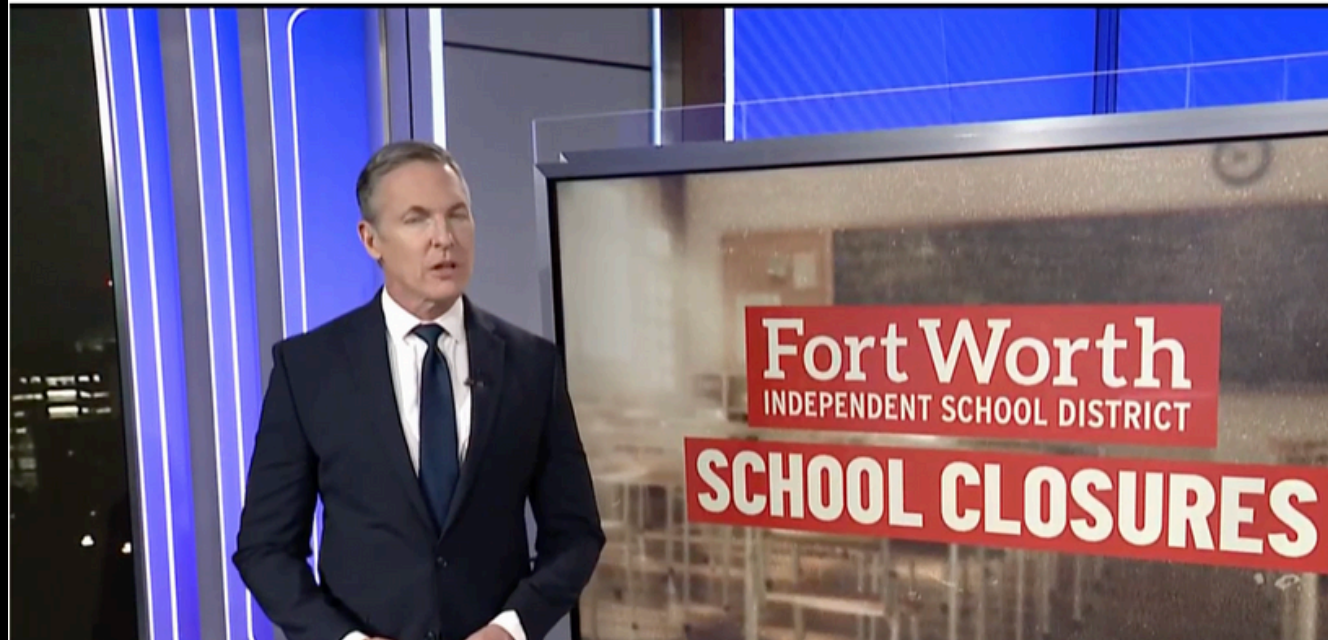
### Jan. 2025 TX Legislature

Governor has said there will be no new funding for public schools until school vouchers have passed.

# Fort Worth ISD considers closing up to 25 schools as the district faces budget shortfall

District leaders heard the latest proposals for a five-year facilities plan aimed at reducing expenses

By Keenan Willard • Published February 11, 2025 • Updated on February 12, 2025 at 9:38 am



# Austin ISD announces hiring freeze as budget deficit grows to \$110 million

Fogel 25 at 9:43 AM CST



# Leander ISD parents and students frustrated by district's decision to end popular program

The district, which has offered the International Baccalaureate (IB) program since 1999, said the decision was made to help address a \$34.4 million budget deficit.



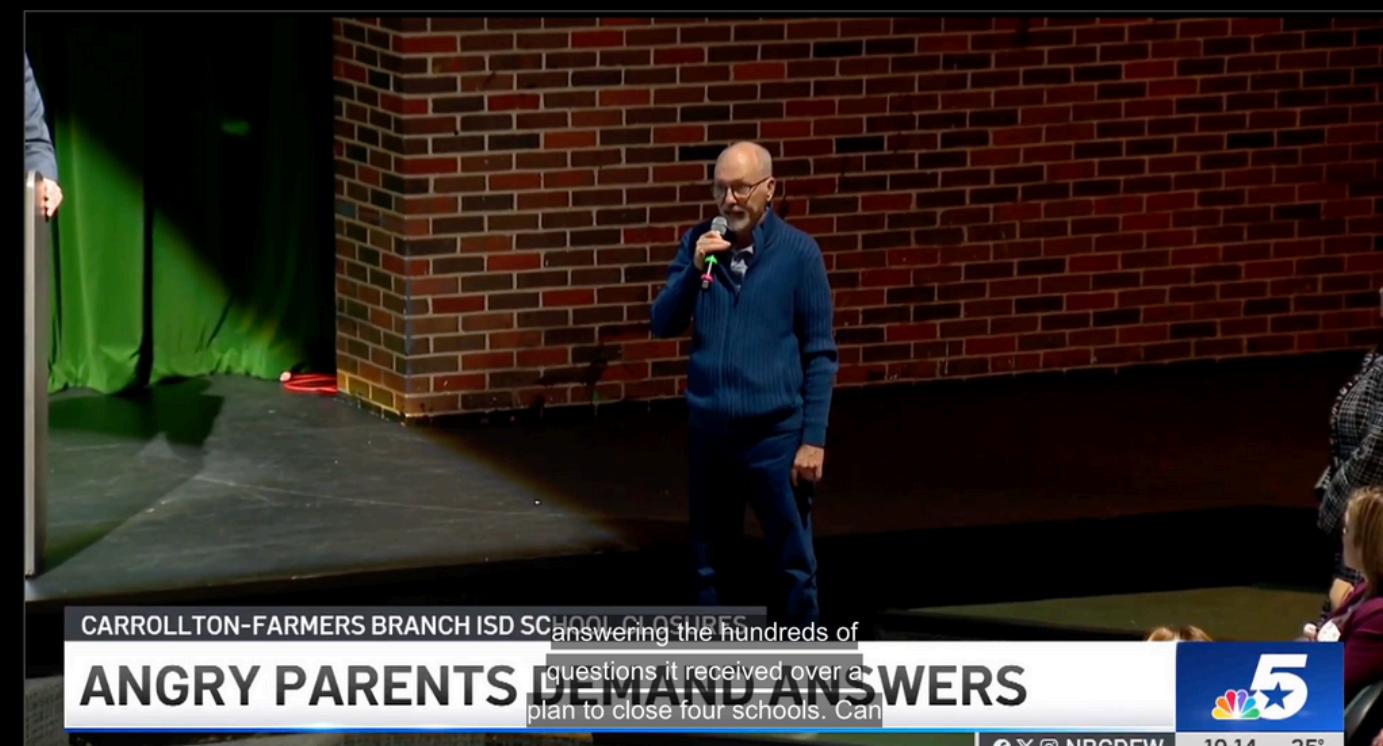
# Northwest ISD to eliminate 100 teaching positions amid \$16 million deficit

By Nicole Nielsen, Erin Jones Updated on: February 11, 2025 / 9:11 PM CST / CBS Texas



# Parents voice concerns over Carrollton-Farmers Branch ISD school closures plan

Angry parents packed into an auditorium in Carrollton-Farmers Branch ISD Thursday night. Several times the crowd erupted with protests...

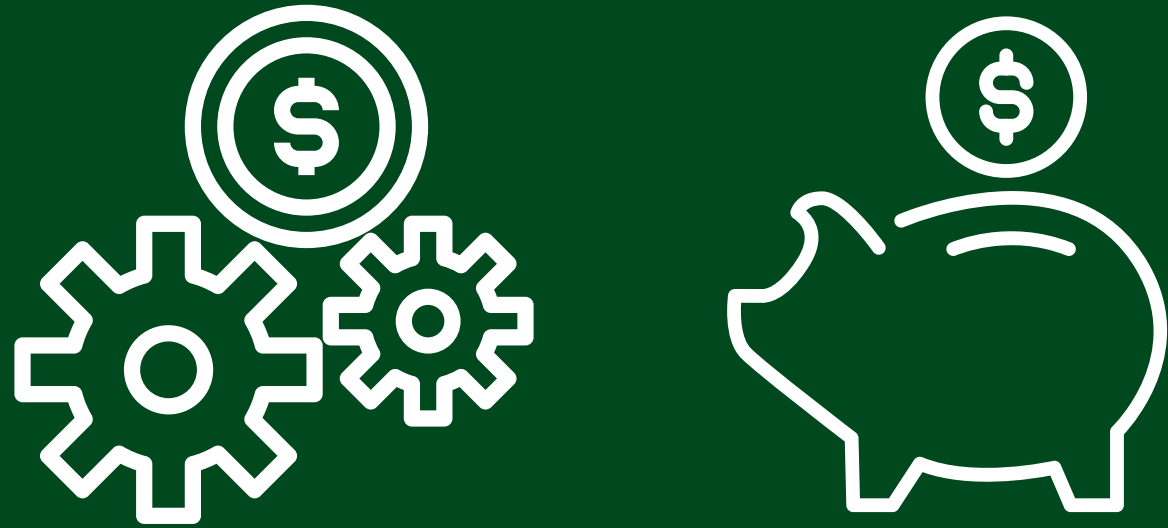


# Types of Funds in Texas Public Schools

## Local Funds

*Maintenance & Operations*

*Fund Balance*



- The **main funding source** for the district
- These funds are used for the **day-to-day operations** of the district (salaries, instructional resources, utilities, safety, etc.)
- **Fund Balance** (savings account) must have at least 60-90 days of operating costs

## Bond Funds

*Interest & Sinking*



- Requires **voter approval**
- Used for capital projects and items such as **school buildings**, buses, and large technology expenses

## Grant Funds

*Title I, II, III, IDEA, etc.*



- Can only be used for **designated purposes**
- Cannot be used to pay for something the district is required to provide (may only **supplement, not supplant**)

# Public School Finance in Texas



***With 100% attendance***

- \$6,160 per student each year
  - Additional funding based on the individual needs of the student: special programs, CTE, etc.
  - This amount has not changed since 2019.
- The funding for each student is reduced by the number of absences of the student.

# What happens if property taxes increase?



**As local property wealth increases, the State's contribution to funding public education is decreased.**



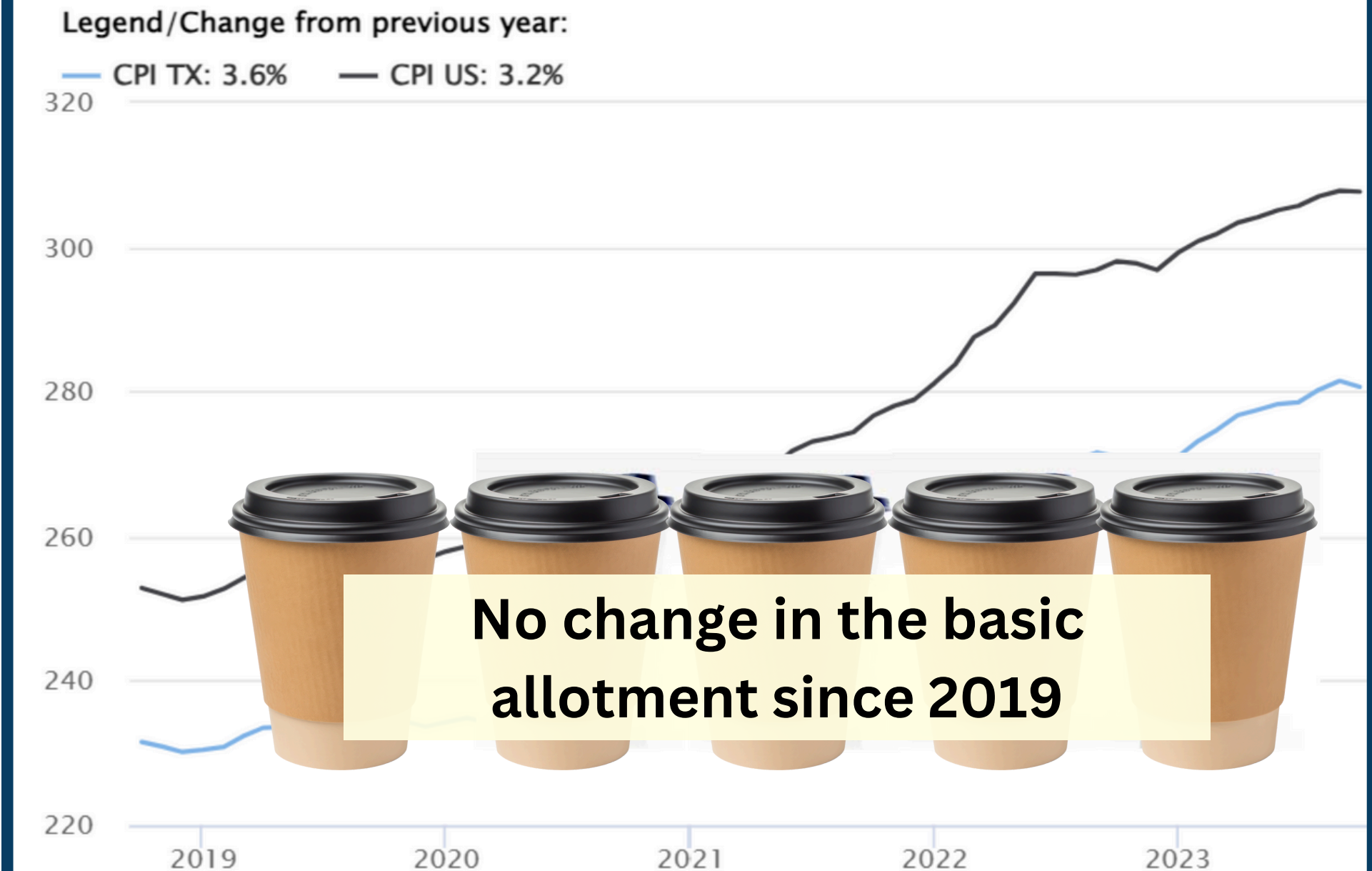
***The Size of the Cup (amount of funding) Does Not Change.***

# No Change in the Basic Allotment & Increased Inflation

	% Increase
<b>Fuel</b> <ul style="list-style-type: none"> <li>• 2019: \$474,700</li> <li>• 2023: \$907,200</li> </ul>	<b>91%</b>
<b>Utilities</b> <ul style="list-style-type: none"> <li>• 2019: \$4,161,600</li> <li>• 2023: \$4,444,000</li> </ul>	<b>7%</b>
<b>Property Insurance</b> <ul style="list-style-type: none"> <li>• 2020: \$ 934,800</li> <li>• 2024: \$2,841,500</li> </ul>	<b>204%</b>
<b>Health Insurance</b> <ul style="list-style-type: none"> <li>• 2019: \$19,742,700</li> <li>• 2023: \$23,904,000</li> </ul>	<b>21%</b>

**If the TX legislature were to account for inflation, Bryan ISD would see an INCREASE of approximately \$15-16 million in revenue.**

## Measures of Inflation

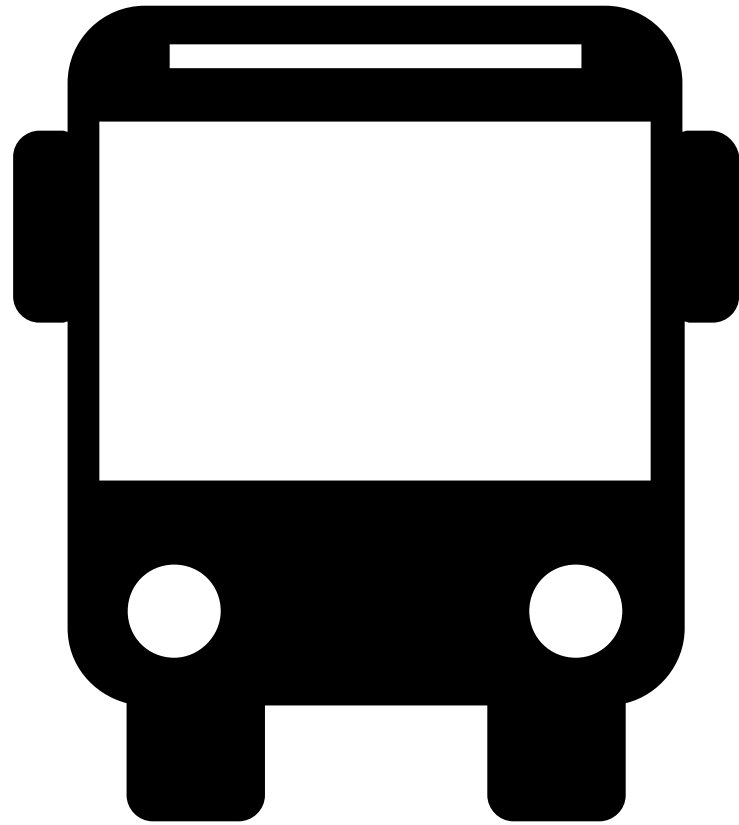


**No change in the basic allotment since 2019**

\*Excluding food and energy

Source: US Bureau of Labor Statistics and Comptroller of Public Accounts, based on data provided by Bureau of Labor Statistics

# Examples of Underfunded Mandates



## Transportation

State Allotment: \$1,467,470

Cost: \$6,185,711

Underfunded: -\$4,718,241



## Safety & Security

State Allotment: \$521,170

Cost: \$3,440,032

Underfunded: -\$2,918,862

# Texas Public Schools Financial Challenges



**Record Inflation**



**End of ESSER Grant**



**No Change in the Basic Allotment**



**State-wide  
Financial  
Challenges in  
Texas Public  
Schools**

# HB2 – School Finance

## **Status: Amended & Passed by House April 16**

- Increases Basic Allotment of \$6,160 by ~~\$220~~ **\$395**
  - Requires districts to use at least 40% (75% of gain spent on Teachers) on compensation increases (previously 30%)
- Increases compensatory education allotment from .275 to .28 (*Moved to 2nd year of biennium*)
- Increases the Teacher Incentive Allotment (*Moved to 2nd year of biennium*)
- Changes SPED funding to intensity of services-based funding
- Creates a Fine Arts allotment in grades 6-12
- Prohibits uncertified teachers in the core curriculum for 2026-2027
- Creates a grant to reimburse school districts for TRS costs associated with hiring retired teachers



# SB26 – Teacher Pay

**Status: 2/26/25 Approved by Senate, 2/27/25 Referred to House Public Education Committee**

- Teacher Incentive Allotment
  - National Board Certification as a new Designation – rather than a Recognized designation
  - Creates a new TIA designation level of “acknowledged”
  - Increases the amount of each allotment (Acknowledged, Recognized, Exemplary, Master)
- Creates a grant for an optional local designation system for school districts (Enhanced TIA School District).
- Provides free PreK enrollment for all classroom teachers in districts where PreK is offered
- Teacher Retention Allotment
  - \$2,500 for each classroom teacher with 3–4 years of experience
  - \$5,500 for each classroom teacher with more than 5 years of experience



# Legislative Update

**SB2/HB3**: Passed by the Senate, ~~Referred to~~ **Approved by the** House Public Education Committee **and the House. Sent to the Governor for signature**

- Create Educational Savings accounts: \$10,000, or \$11,500 if the student has a disability; \$2,000 for homeschool students
- Private schools may select a nationally norm-referenced assessment
- Private schools are not subject to federal and state laws regarding serving students with disabilities



# Discussion in Legislative Session

- **Projected Cost of SB26**

- Not Included in SB26: Teachers 0–2 Years of Experience and all other non-teaching staff
- Teachers 3–4 Years of Experience (\$2,500): \$355,000
- Teachers 5+ Years of Experience (\$5,500): \$4.2 million

- **REMINDER: Retention Stipends from 2024–2025**

- \$1,000 New Teacher Signing Bonus
- September: 2% Retention Stipend
  - all employees
  - not less than \$500
- December: 2% Retention Stipend
  - all employees
  - not less than \$500
- May: Retention Stipend
  - Employees below A6: 2%
  - not less than \$500
  - A6 & above: 1%

*Approximately  
\$6 million*

**Due to no action at the state-level, and in consultation with TASB, there is not enough information to make any recommendations regarding compensation or possible retention stipends for the 2025-2026 school year at this time. Decisions and information will be forthcoming as the legislative session unfolds.**

# Streamlining the Budget

Campus and district administrators' feedback resulted in the following commitments for streamlining the budget.

## 2023-2024

---

- Reduction in central administration staffing
- School Nutrition Cost Sharing
- Reduce Staff Conference Travel
- Shifting Positions to Federal Funding
- FAST Dual Credit Savings
- ESS Cost Reduction
- Middle School Schedule Adjustment
- Other Staffing Adjustments

## 2024-2025

---

- Additional reductions in central administration staffing
- Increased School Nutrition Cost Sharing
- Further reduction of Staff Conference Travel
- Through attrition, reviewing all positions for potential consolidation and cost savings.

# Feedback & Input

- **Staffing (86% of the Local Budget)**
  - Opportunities to fill vacancies internally
  - Opportunities to streamline staffing
  - Review of non-teaching positions through attrition
- **Programs**
  - Possible consolidation of programs
- **Resources**
  - Master scheduling software
  - Attendance tracking software
  - Data visualization software
  - Supplemental instructional resources
  - Review of all operating costs
  - Cost sharing with School Nutrition Funds



**WE WANT  
YOUR FEEDBACK**



## BUDGET DEVELOPMENT TIMELINE

- January 2025 - Preliminary estimated budget
  - Based on current funding formulas and enrollment
- February 2025 - Board finance committee meetings/Board budget workshop
  - Staffing reviews, campus & department budget meetings
- April 2025 - Board budget workshop
  - Certified estimate of appraised property values received
- May 2025 - Board finance committee meetings/Board budget workshop
  - Preliminary campus/department budgets pushed out for review
  - Updated revenue forecast
  - Published budget hearing notice
- June 2, 2025 - Final update to Board of Trustee on 2025-26 budget
  - Also - Sine die. (Last day of 89th Regular Legislative Session)
    - Governor still has 20 days to act on legislation passed in last 10 days of session
- June 16, 2025 - Public Hearing to adopt 2025-26 budget



# Budget Update

---

May 5, 2025





# Campus Feedback

**These comments appeared most frequently in the campus responses.**

- \*The 4-day work week
- Reimagine the Instructional Coach model
- Convocation
- \*Less Central Office staff
- Revisit campus staffing allocations
- \*Revisit the content and structure of Professional Development
- Reduce printed materials when digital is available
- Re-evaluate the usage of certain software resources:
  - BEST, MAP, Circle
- Positions with “down time”
- Modified schedule for custodians or revisit # of custodians
- Summer school student: teacher ratio
- Keep the CTE pathways that earn an Industry Based Certification
- Solar panels



**5. Public Comment on Agenda Item**

**6. Consent Agenda**

6.A. Consider Approval of the Quarterly Investment Report for the Quarter Ended March 31, 2025

May 5th, 2025

**BRYAN INDEPENDENT SCHOOL DISTRICT  
QUARTERLY INVESTMENT REPORT – COMPLIANCE STATEMENT  
FOR THE QUARTER ENDING March 31, 2025:**

We, the approved Investment Officers of Bryan ISD, hereby certify that the following Investment Report represents the investment position of the District at March 31, 2025 and the activity for the quarter then ended. All investments were purchased in compliance with the Board approved Investment Policy.



Kevin Beesaw  
Assistant Superintendent of Business Services



Stefanie Brumfield  
Director of Financial Services

Bryan Independent School District  
Investment Report for the period January 1, 2025 through March 31, 2025

Investment Type	Fund	1/1/2025 Balance	Additions (Deposits or Investments)	Deletions (Withdrawals or Investments Matured/Called)	3/31/2025 Balance	Yield	Maturity Date	# Days Current Period	Current Earnings	1/1/2025 Market Value	3/31/2025 Market Value
<b>Investment Pools:</b>											
See the attached detail	All	114,900,201	79,436,274	(66,873,145)	127,463,331	4.369%		90	1,449,231	114,900,208	127,463,337
<b>Total Investment Pools</b>		<b>114,900,201</b>	<b>79,436,274</b>	<b>(66,873,145)</b>	<b>127,463,331</b>				<b>1,449,231</b>	<b>114,900,208</b>	<b>127,463,337</b>
<b>Money Market Fund:</b>											
Charles Schwab (formerly TD Ameritrade)-MAPP	Gen'l	96,535	791,614	(854,487)	33,662	0.010%		90	522	96,535	33,662
<b>Total Money Market Funds</b>		<b>96,535</b>	<b>791,614</b>	<b>(854,487)</b>	<b>33,662</b>				<b>522</b>	<b>96,535</b>	<b>33,662</b>
<b>Agency, Disc. Notes &amp; Municipals - Held in Frost Safekeeping Account</b>											
	Gen'l	0	0	0	0	0.000%		0	0	0	0
TD Ameritrade-MAPP-Sched Attached	Gen'l	5,720,000	846,000	(730,000)	5,836,000	Various-See Sched Attached			67,842	5,734,604	5,857,392
<b>Total Muni &amp; Govt Sec</b>		<b>5,720,000</b>	<b>846,000</b>	<b>(730,000)</b>	<b>5,836,000</b>				<b>67,842</b>	<b>5,734,604</b>	<b>5,857,392</b>
<b>Total Investments</b>		<b>120,716,737</b>	<b>81,073,888</b>	<b>(68,457,632)</b>	<b>133,332,993</b>				<b>1,517,595</b>	<b>120,731,347</b>	<b>133,354,392</b>

Summary by Fund

General Fund	51,543,442	52,491,665	(29,871,702)	74,163,406
Debt Service Fund	17,740,145	24,541,111	(33,113,214)	9,168,042
Construction Fund	43,908,420	477,124	(1,898,370)	42,487,174
School Nutrition Fund	7,365,094	3,563,014	(3,422,080)	7,506,028
Internal Service Fund	159,637	973	(152,266)	8,344
	<b>120,716,737</b>	<b>81,073,888</b>	<b>(68,457,632)</b>	<b>133,332,993</b>

Bryan Independent School District  
Investment Report for the period January 1, 2025 through March 31, 2025

Investment Pool	Fund	1/1/2025 Balance	Additions (Deposits or Investments)	Deletions (Withdrawals or Investments Matured/Called)	3/31/2025 Balance	Yield	Maturity Date	# Days Current Period	Current Earnings	1/1/2025 Market Value	3/31/2025 Market Value
TexPool	Gen'l	33,664,100	50,719,716	(28,287,215)	56,096,601	4.346%		90	578,888	33,664,101	56,096,602
	Debt	17,740,136	24,541,111	(33,113,214)	9,168,033	4.346%		90	181,427	17,740,137	9,168,034
	Fd Serv	7,365,091	3,563,014	(3,422,080)	7,506,025	4.346%		90	77,619	7,365,092	7,506,026
	Constr	43,908,415	477,124	(1,898,370)	42,487,169	4.346%		90	475,988	43,908,416	42,487,170
	W Comp	159,635	973	(152,266)	8,342	4.346%		90	973	159,636	8,343
TXClass	Gen'l	12,062,694	134,334	-	12,197,028	4.491%		90	134,334	12,062,695	12,197,029
TexStar	Gen'l	132	2	-	133	4.364%		90	2	132	133
<b>Total Investment Pools</b>		<b>114,900,202</b>	<b>79,436,274</b>	<b>(66,873,145)</b>	<b>127,463,331</b>				<b>1,449,231</b>	<b>114,900,208</b>	<b>127,463,337</b>

Bryan Independent School District

Investment Report for the period January 1, 2025 through March 31, 2025

<b>Agency, Disc. Notes, Municipals and CD's - Held in Charles Schwab (formerly TD Ameritrade) Acct-TCG Advisors MAPP</b>											
Investment Type	Fund	1/1/2025 Balance	Additions (Deposits or Investments)	Deletions (Matured or Called)	3/31/2025 Balance	Yield	Maturity Date	# Days Current Period	Current Earnings	1/1/2025 Market Value	3/31/2025 Market Value
Federal Farm Credit Bond (3/2/23)	Gen'l	730,000	0	(730,000)	0	4.750%	02/21/25	52	5,140	730,249	-
United States Treasury Notes (05/31/25)	Gen'l	560,000	0	0	560,000	4.250%	05/31/25	90	6,117	559,825	559,912
Federal Farm Credit Bond (7/28/25)	Gen'l	765,000	0	0	765,000	4.875%	07/28/25	90	9,600	767,235	766,191
United States Treasury Notes (12/04/23)	Gen'l	625,000	0	0	625,000	4.875%	11/30/25	90	8,031	628,320	627,734
Federal Home Loan Bank (01/31/24)	Gen'l	570,000	0	0	570,000	4.750%	12/12/25	90	7,187	572,497	572,163
United States Treasury Notes (04/2/24)	Gen'l	560,000	0	0	560,000	4.500%	03/31/26	90	6,570	561,575	562,275
United States Treasury Notes (05/2/24)	Gen'l	580,000	0	0	580,000	4.875%	04/30/26	90	7,156	584,531	584,984
Federal Home Loan Bank (07/03/24)	Gen'l	670,000	0	0	670,000	4.875%	06/12/26	90	8,317	675,424	676,096
United States Treasury Notes (09/06/24)	Gen'l	660,000	0	0	660,000	3.750%	08/31/26	90	6,231	654,947	657,938
United States Treasury Notes (02/24/25)	Gen'l		846,000	0	846,000	4.250%	11/30/26	35	3,492		850,098
<b>Total Muni &amp; Govt Sec &amp; CD/s-TD Ameritrade-MAPP</b>		<b>5,720,000</b>	<b>846,000</b>	<b>(730,000)</b>	<b>5,836,000</b>				<b>67,842</b>	<b>5,734,604</b>	<b>5,857,392</b>

6.B. Consider Approval of Quarterly Donations Made to Bryan ISD

**BRYAN INDEPENDENT SCHOOL DISTRICT  
REPORT OF DONATIONS/GIFTS TO THE DISTRICT  
QUARTERLY REPORT, JANUARY TO MARCH 2025**



Date	Campus	Donor	Value of Gift	Recipient	Intended Use	Product/Description
11/20/24	Travis B. Bryan High School	Bryan Rotary Club	953.00	Rosie Addison	This equipment is intended to teach Health Science Technology pathway students adult, child, and infant CPR.	Adult and Infant CPR Equipment for Health Science Technology classes
11/20/24	Kemp-Carver Elementary School	Bryan Rotary	500.00	Tyra Watts	K-4 Students and Teachers Supplies	Culturally Diverse Literature
11/20/24	Mitchell Elementary School	Bryan Rotary Club	415.00	Lisa Vickers	The paddles will be used as a response technique for students. They will increase the opportunities to respond in whole group and small group.	Dry Erase Paddles
01/06/25	Travis B. Bryan High School	Brazos Valley Fair and Rodeo	180.00	AFJROTC	To support cadet activities such as field trips.	Monetary
01/16/25	CTEC	MACK BOLT	124.72	John Gerzik's Go-Kart Groups	Items to put together the Go-Kart	Nuts, Bolts, and Washers
01/25/25	Travis B. Bryan High School	Costco	100.00	Vikings Kicking Out Tobacco (VKOT)	To support VKOT activities	Monetary
02/04/25	Fannin Elementary School	Jessie Sanchez	320.00	Fannin Staff	For Staff Supplies	Monetary
02/06/25	Bryan Collegiate High School	TTEER Drywall/ Mr Fuentes	200.00	Junior Class	Prom 2025	Monetary
02/06/25	Bryan Collegiate High School	Anonymous Donors @ Junior Profit Share	59.00	Junior Class	Prom 2025	Monetary
02/14/25	Jane Long Intermediate School	The String & Horn Shop Inc	200.00	check donation	Orchestra Shirts	Monetary
02/17/25	Bryan Collegiate High School	Aright Insurance Agency	300.00	NHS Club	NHS Needs and Supplies	Monetary
02/17/25	Bryan Collegiate High School	Rising R Dream Properties LLC	100.00	Freshman Club	Freshman End of Year Field Trip	Monetary
02/24/25	Crockett Elementary School	CAMINOS MEXICAN CAFE	600.00	CROCKETT ELEMENTARY SOCCER TEAM	Team Uniforms and Equipment	Monetary
02/25/25	CTEC	McCoy's-Bryan #34	997.36	Donald Brown	Supplies to be used to construct an 8X10 Studio Shed at SkillsUSA contest	Supplies
02/26/25	Bryan Collegiate High School	Sterling Auto Group	500.00	NHS Club	NHS Needs and Supplies	Monetary
03/04/25	Davila Middle School	El Mundo Del Taco   Enrique Tirado	250.00	Davila TSA	Used for normal Davila TSA operations such as but not limited to: Registration Fees, After School/Open Practice Snacks, Project Printing Cost, etc.	Monetary
03/19/25	Fannin Elementary School	Coolvu of Bcs LLC	200.00	Mary Jane De LaRosa	Pre-K Field Trip	Monetary
04/02/25	Jane Long Intermediate School	Nothing Bundt Cakes	28.00	Jane Long Intermediate School Paraprofessionals	To Celebrate Paraprofessional Appreciation Day	12 Nothing Bundt Cakes Bundtinis

## 7. Action Items

7.A. Consider Approval for the Purchase Over \$50,000 for the School Safety and Security Audit

**Presenter:** Assistant Superintendent of Business Services, Kevin Beesaw, Assistant Superintendent of Business Services, Norma Friddle, and Assistant Director of Safety and Security Rich Himmel

## 8. Closed Session

8.A. Discuss Issues Pertaining to Appointment, Employment, Evaluation, Reassignment, Duties, Discipline, or Dismissal of a Public Officer or Employee - Texas Government Code Chapter 551.074

8.B. Discussion Related to a Public School Student Wherein Personally Identifiable Information will Necessarily be Revealed - Texas Government Code Sections 551.0821

8.C. Consultation with Attorney to Discuss Legal Requirements and Financial Terms of JETI Tax Incentive Program - Texas Government Code Sections 551.071 and 551.087

## 9. Reconvene in Open Session

9.A. Consider Approval of the Recommendation for the Principal of Mitchell Elementary

9.B. Consideration and Possible Action Regarding Superintendent's Recommendation to Terminate the Probationary Contract, at the End of the Contract Term, of a Classroom Teacher

## 10. Adjourn

Posted: Friday, May 2, 2025, 11:45 a.m.



For the Board of Trustees