

Regular Meeting  
Tuesday, July 14, 2020 7:00 PM

Harleton Independent School District  
17000 S.H. 154  
Harleton, Texas 75651

## **Agenda**

1. Call to Order
2. Roll Call of Board Members
3. Pledge of Allegiance
4. Open Forum
5. Consent Agenda
  - A. Approval of Board Minutes - All Goals
  - B. Financial Statement - Finance All
6. Action Items
  - A. Consider/Take Action on Workers' Compensation Plan Year 2020-2021 Renewal Addendum
  - B. Consider and/or Approval of Bus Bid for 2020-2021 school year purchase.
  - C. Consider/Take Action on 2020-2021 Region 7 Service Agreements
  - D. Consider and/or Take Action on Travel Request for Systems Go Teacher Training - Gwen Wright
  - E. Consider/Take Action on Softball Field house Site Plan
  - F. Consider/Take Action on Authorizing the Superintendent to Submit the Letter of Intent for the Asynchronous Remote Instruction Plan  
**Presenter:** Jay Ratcliff
  - G. Consider/Take Action on Authorizing the Superintendent to Submit the Asynchronous Remote Instruction Plan for Approval, Upon Completion  
**Presenter:** Jay Ratcliff
  - H. Consider/Take Action on Local Board Policy Pertaining to Extra-Curricular Activity Participation by Remote Instruction Students  
**Presenter:** Jay Ratcliff
  - I. Closed Session
    1. Pursuant to Texas Government Code Sections 551.074 for the purpose of considering the appointment, employment, evaluation, reassignment, duties, discipline, or dismissal of a public officer or employee and 551.072 Deliberations about Real Property - A governmental body may conduct a closed meeting to deliberate the purchase, exchange, lease, or value of real property is deliberation in an open meeting would have a detrimental effect on the position of the governmental body in negotiations with a third person.
  - J. Personnel Issues, Including Resignations, Terminations, and Discipline of District Employees
7. Information Items
  - A. Superintendent's Report
    1. Discuss Field House Site Plan and Construction Information
    2. Discuss August Board Meeting Dates
    3. Fall Reopening Plan Progress Update

8. Board Input
9. Adjourn



**Claims Administrative Services, Inc.**

*Our reputation for excellence is no accident.®*

June 4, 2020

Harleton ISD  
Jay Ratcliff  
PO Box 510  
Harleton, TX 75651-0510

Dear Jay Ratcliff:

**Congratulations on the completion of another successful school year!** With the summer here, the conclusion of your 2019-2020 Workers' Compensation program plan year is not far behind.

Attached is your renewal addendum, which simply allows you to **continue your elected multi-year plan option or select a new multi-year plan.** All plan options reflect CAS's commitment to you to provide stable long term rates. By starting a new multi-year plan, you will be locking in your current workers' compensation rate for additional years. **We ask that you select which option you are interested in and return the signed addendum to us. Please ensure you are not under any obligation to other carriers prior to extending a multi-year option.**

Clients such as Harleton ISD are vital to the success of our program – **a program that consistently sees over 95% of members renew each year.** CAS continues to focus on reducing both the frequency and severity of injuries, without sacrificing the care your employees receive to ensure your school/college has the best workers' compensation value available.

Many thanks from all of us at CAS for the opportunity to earn your business. We look forward to serving as your workers' compensation program for years to come.

Thank you for all you do,

A handwritten signature in black ink that reads "Bill Costanza". The signature is written in a cursive style with a long horizontal line extending from the end of the name.

Bill Costanza  
President

Enclosures: Renewal Addendum  
Return Envelope



# Claims Administrative Services, Inc.

*Our reputation for excellence is no accident.<sup>TM</sup>*

TEXAS EDUCATIONAL INSURANCE ASSOCIATION

## WORKERS' COMPENSATION

### Plan Year 2020-2021 Renewal Addendum – Part 1 of 2

Plan Sponsor: Harleton ISD

3rd Year of a 3 Year Contract

FIXED COST ..... \$21,090

LOSS FUND MAXIMUM ..... \$48,026

Renewal Based on Estimated Payroll of \$4,966,890

**Fixed Cost Includes:** Claims Administration, Record Keeping, Safety and Loss Control, Excess Insurance, plus...

Initial contact with claimant	Setting IME appointments	Communicating with Doctor
Initial contact with insured	Administering benefits timely	Visits by Adjuster
Initial contact with doctor	Annual Reports	Recorded statements
Faxes	Check stock & issuing checks	Filing state forms
Regular Meetings with Client	Subrogation Management	Answering WC legal questions
Photographs	Reports	Supervisor review of claims
Telephone	Litigation Management	Travel expenses
Monitoring medical treatment	Communicating with employee	Reviewing claims with clients
Airfare, except extraordinary	Mileage, except extraordinary	Excess Carrier Reporting
Loss Runs	Express mail, except extraordinary	EDI requirements for Ins Carrier
Filing of 1099's	Obtain Records, except extraordinary	

.....CAS Service Guarantee, and much more.....

**Loss Fund Includes:** Incurred Claims, Claims Expense Allowance, Allocated Claims Expenses, and Cost Containment

<b>Allocated Expenses:</b>	Cost associated with bank account or its maintenance
Attorney fees	Extraordinary travel expenses incurred by CAS
Medical opinions	Cost associated with Occupational Rehabilitation
Independent Medical Examination	Pre-authorization or Utilization
Peer Review	Cost for obtaining and copying of public or medical records
Court costs	Cost for photography, preparation of maps, diagrams or physical analysis
Medical Case Management	Cost of employing experts' testimony
Cost of surveillance	Cost for property damage appraisal fees
Interest paid as result of Litigation	Witness travel expense
Witness fees	Specialty Bill Review
Medical Bill Negotiations	

**Cost Containment:**

CAS does provide cost containment services for our clients. Cost containment services are allocated to the claim and billed at the following rates. Field Case Management, \$88 per hour + mileage; Telephonic Case Management, \$88 per hour; Rehabilitation/Vocational Case Management, \$88 per hour + mileage; Pre-Authorization, \$150 flat rate per request; Specialty Bill Review 25% of savings; Medical Bill Negotiations 25% of savings; Pharmacy Network, 9% of savings; Ancillary Services, 9% of savings; Medical Necessity Review, \$125 Coordination fee + cost; Subrogation, no charge if done in-house or at cost if a complicated case that would be better represented by an attorney; Investigation Services, \$35 for initial database research/\$84 per hour for surveillance, In-house attorney representation at hearings \$75.00 per hour, Section 111 reporting query is at no charge; \$10.00 per submission.

**CAS has a proven record in reducing claims cost. CAS adjusters aggressively work with the injured employee and doctors to get the employee back to work and close their file. CAS works closely with their clients to establish a long-term partnership.**



# Claims Administrative Services, Inc.

Our reputation for excellence is no accident.<sup>TM</sup>

Texas Educational Insurance Association

## WORKERS' COMPENSATION

### Plan Year 2020-2021 Renewal Addendum – Part 2 of 2

Plan Sponsor: Harleton ISD

3rd Year of a 3 Year Contract

Renewal Based on Estimated Payroll of \$4,966,890

**Option 1: Select New 5-Year Plan--Locks in Fixed Cost Rate for Five Additional Years.**

<input type="checkbox"/> <b>Begin New 5 Year Plan/Year 1*</b>	
<input type="checkbox"/> <b>Fixed Cost</b> Payment in Full <i>Due on 9/1</i>	<input type="checkbox"/> <b>Fixed Cost</b> Quarterly Payments of 40%, 20%, 20%, 20% <i>Due on 9/1, 12/1, 3/1, and 6/1</i>
<b>\$21,090</b>	

\*The Plan Sponsor agrees to extend the term of this agreement for an additional five (5) years which must be completed before an exit option is available. The Plan Sponsor further acknowledges that this agreement guarantees only the Fixed Cost Rate and does not guarantee the Fixed Cost or Loss Fund amounts. *Please ensure you are not under any obligation to other carriers prior to extending a multi-year option.*

**Option 2: Select New 3-Year Plan--Locks in Fixed Cost Rate for Three Additional Years.**

<input type="checkbox"/> <b>Begin New 3 Year Plan/Year 1**</b>	
<input type="checkbox"/> <b>Fixed Cost</b> Payment in Full <i>Due on 9/1</i>	<input type="checkbox"/> <b>Fixed Cost</b> Quarterly Payments of 40%, 20%, 20%, 20% <i>Due on 9/1, 12/1, 3/1, and 6/1</i>
<b>\$21,090</b>	

\*\*The Plan Sponsor agrees to extend the term of this agreement for an additional three (3) years which must be completed before an exit option is available. The Plan Sponsor further acknowledges that this agreement guarantees only the Fixed Cost Rate and does not guarantee the Fixed Cost or Loss Fund amounts. *Please ensure you are not under any obligation to other carriers prior to extending in a multi-year option.*

**Option 3: Current Plan—Fixed Cost Rate and Discount Subject to Change at End of Contract Term.**

<input type="checkbox"/> <b>Continue Current 3 Year Plan/Year 3***</b>	
<input type="checkbox"/> <b>Fixed Cost</b> Payment in Full <i>Due on 9/1</i>	<input type="checkbox"/> <b>Fixed Cost</b> Quarterly Payments of 40%, 20%, 20%, 20% <i>Due on 9/1, 12/1, 3/1, and 6/1</i>
<b>\$21,090</b>	

\*\*\*The Plan Sponsor agrees, this agreement continues for 1 (One) more years which must be completed before an exit option is available. The Plan Sponsor further acknowledges that this agreement guarantees only the Fixed Cost Rate and does not guarantee the Fixed Cost or Loss Fund amounts.

<input type="checkbox"/> <b>DRAFT OUR W/C FUND BANK ACCOUNT ON DUE DATE— Plan Sponsor authorizes payment by draft on the due date for any and all billings. Plan Supervisor will provide copy of Draft Invoice prior to due date.</b>
SHOULD THE DISTRICT NOT CHOOSE THE DRAFT PAYMENT METHOD, INITIAL INVOICE WILL BE ISSUED PRIOR TO 8/1/20, PAYABLE ON 9/1/20. QUARTERLY INVOICES WILL BE MAILED TO PLAN SPONSOR PRIOR TO AND PAYABLE ON DUE DATES LISTED ABOVE.

I represent that I am expressly and duly authorized by Harleton ISD to execute this agreement and legally bind my employer as set forth in this agreement. I acknowledge that Harleton ISD wishes to continue the agreement as previously approved by the Board of Trustees, the governing body of Harleton ISD. As the designated employee of Harleton ISD, I am exercising the authority conveyed by the Board of Trustees to extend the term of this agreement for an additional five years \_\_\_ three years \_\_\_ or continuing current plan \_\_\_ which must be completed before an exit option is available. I further acknowledge that this agreement guarantees only the Fixed Cost Rate and does not guarantee the Fixed Cost or Loss Fund amounts. It is understood that Fixed Cost and Loss Fund amounts are subject to change each year of the agreement based on the actual payrolls of Harleton ISD. **Effective start date of this plan addendum is September 1, 2020.**

\_\_\_\_\_/\_\_\_\_\_/2020 \_\_\_\_\_/\_\_\_\_\_/\_\_\_\_\_  
 Date Signature (Designated Employee) Title

**Please Select a Plan Option and return signed Renewal Addendum to CAS by 6/30/2020.**

**CAS-Claims Administrative Services, Inc.**

Phone: 903.509.8484  
Toll Free: 800.765.2412

501 Shelley Drive  
P.O. Box 7500  
Tyler, TX 75701

Fax: 903.509.1888  
[www.cas-services.com](http://www.cas-services.com)





# **INTEGRATED CE S BUS**

Sales Proposal For:  
**Harleton ISD**

Presented By:  
**LONGHORN BUS SALES**

---

**Prepared For:**  
Harleton ISD  
Mike Harper  
17000 State Highway 154  
Harleton, TX 75651-4885  
(903)777 - 2372  
Reference ID: 1-77DSL3pt

**Presented By:**  
LONGHORN BUS SALES  
mike horn  
9100 N LOOP E  
HOUSTON TX 77029 -  
(713)631-9306

Thank you for the opportunity to provide you with the following quotation on a new IC Corporation vehicle. I am sure the following detailed specification will meet your operational requirements, and I look forward to serving your business needs.

**Model Profile**  
**2021 INTEGRATED CE S BUS (PB105)**

<b>APPLICATION:</b>	School Transportation
<b>MISSION:</b>	Requested GVWR: 29800. Calc. GVWR: 29800 Calc. Start / Grade Ability: 28.08% / 2.65% @ 55 MPH Calc. Geared Speed: 79.2 MPH
<b>DIMENSION:</b>	Wheelbase: 276.00, CA: N/A, Axle to Frame: 166.00
<b>ENGINE, DIESEL:</b>	{Cummins B6.7 250} EPA 2017, 250HP @ 2400 RPM, 660 lb-ft Torque @ 1600 RPM, 2600 RPM Governed Speed, 250 Peak HP (Max), School Bus Only
<b>TRANSMISSION, AUTOMATIC:</b>	{Allison 2500 PTS} 5th Generation Controls, Wide Ratio, 6-Speed with Double Overdrive, Less PTO Provision, Less Retarder, with 33,000-lb GVW and GCW Max, School Bus
<b>CLUTCH:</b>	Omit Item (Clutch & Control)
<b>AXLE, FRONT NON-DRIVING:</b>	{Meritor MFS-10-122A} I-Beam Type, 10,000-lb Capacity
<b>AXLE, REAR, SINGLE:</b>	{Dana Spicer 19060S} Single Reduction, 19,800-lb Capacity, 190 Wheel Ends Gear Ratio: 6.17
<b>TIRE, FRONT:</b>	(2) 11R22.5 Load Range H AH37 (HANKOOK), 499 rev/mile, 75 MPH, All-Position
<b>TIRE, REAR:</b>	(4) 11R22.5 Load Range H AH37 (HANKOOK), 499 rev/mile, 75 MPH, All-Position
<b>SUSPENSION, REAR, AIR, SINGLE:</b>	{International IROS} 21,000-lb Capacity, 9.25" Ride Height, with Shock Absorbers
<b>PAINT:</b>	Cab schematic 100NB Location 1: 4421, School Bus Yellow (Std) Chassis schematic N/A

**Vehicle Specifications**  
**2021 INTEGRATED CE S BUS (PB105)**

June 12, 2020

<b>Code</b>	<b>Description</b>
PB10500	Base Chassis, Model INTEGRATED CE S BUS with 276.00 Wheelbase, N/A CA, and 166.00 Axle to Frame.

**BODY PLANS**

---

47AMG	BODY, BUS Conventional; 78" Headroom, 34'11" Body Length, +9 Section Rear, 78 Passenger, 276 WB  <u>Includes</u> : NOTE: Body Mandates Overall Vehicle Length of Greater than 40 Feet
50UCJ	BODY PLAN, NON-SPECIAL NEEDS Conventional; 34' 11" Body Length, +9 Section Rear, 77 Passenger, 276" WB, DX9386A000
49001	BODY PLAN, APPROVED VARIATION Number 001

**ENGINE**

---

12EJT	ENGINE, DIESEL {Cummins B6.7 250} EPA 2017, 250HP @ 2400 RPM, 660 lb-ft Torque @ 1600 RPM, 2600 RPM Governed Speed, 250 Peak HP (Max), School Bus Only  <u>Includes</u> : FUEL FILTER Included with Cummins B6.7 Engines Engine Mounted : FUEL/WATER SEPARATOR Fuel/Water Separator; Heated; with Water-in-Fuel Sensor. Engine Mounted
12UYE	RADIATOR Aluminum; 2-Row, Cross Flow, Over Under System, 717 SqIn Louvered, with 313 SqIn Charge Air Cooler. with In-Tank Transmission Cooler  <u>Includes</u> : DEAERATION SYSTEM with Surge Tank : HOSE CLAMPS, RADIATOR HOSES Gates Shrink Band Type; Thermoplastic Coolant Hose Clamps : RADIATOR HOSES Premium, Rubber
12TSY	FAN DRIVE {Borg-Warner SA85} Viscous Type, Screw On  <u>Includes</u> : FAN Nylon
12VBR	AIR CLEANER with Service Protection Element  <u>Includes</u> : GAUGE, AIR CLEANER RESTRICTION Air Cleaner Mounted
12703	ANTI-FREEZE Red, Extended Life Coolant; To -40 Degrees F/ -40 Degrees C, Freeze Protection
12VVN	CRUISE CONTROL Electronic  <u>Notes</u> : Cruise Control Switches Mounted on Steering Wheel are Non-Illuminated.
12WZE	EMISSION COMPLIANCE Federal, Does Not Comply with California Clean Air Idle Regulations
12VHH	FEDERAL EMISSIONS {Cummins B6.7} EPA, OBD and GHG Certified for Calendar Year 2020
12VWH	GOVERNOR Electronic Road Speed Type; for Electronic Engines and Bus Models; with 55 MPH Default
12VYV	IDLE MANAGEMENT SYSTEM Ramp Engine Speed with Air Condition On, in Neutral and Parking Brake Set, Accommodation Package
12UGN	THROTTLE, HAND CONTROL Electronic  <u>Notes</u> : Cruise Control Switches Mounted on Steering Wheel are Non-Illuminated.

**TRANSMISSION**

---

**Vehicle Specifications**  
**2021 INTEGRATED CE S BUS (PB105)**

June 12, 2020

<b>Code</b>	<b>Description</b>
13ARV	TRANSMISSION, AUTOMATIC {Allison 2500 PTS} 5th Generation Controls, Wide Ratio, 6-Speed with Double Overdrive, Less PTO Provision, Less Retarder, with 33,000-lb GVW and GCW Max, School Bus  <u>Includes</u> : OIL FILTER, TRANSMISSION Mounted on Transmission : TRANSMISSION OIL PAN Magnet in Oil Pan
13WYY	SHIFT CONTROL PARAMETERS {Allison} 1000 or 2000 Series Transmissions, Performance Programming
13WLN	TRANSMISSION OIL Synthetic; 20 thru 28 Pints

**CLUTCH**

---

11001 CLUTCH Omit Item (Clutch & Control)

**REAR AXLES, SUSPENSIONS**

---

14AGM	AXLE, REAR, SINGLE {Dana Spicer 19060S} Single Reduction, 19,800-lb Capacity, 190 Wheel Ends . Gear Ratio: 6.17  <u>Includes</u> : REAR AXLE DRAIN PLUG (1) Magnetic, For Single Rear Axle  <u>Notes</u> : The following features should be considered when calculating Rear GAWR: Rear Axles; Rear Suspension; Brake System; Brakes, Rear Air Cam; Brake Shoes, Rear; Special Rating, GAWR; Wheels; Tires. : When Specifying Axle Ratio, Check Performance Guidelines and TCAPE for Startability and Performance
14TBS	SUSPENSION, REAR, AIR, SINGLE {International IROS} 21,000-lb Capacity, 9.25" Ride Height, with Shock Absorbers  <u>Notes</u> : The following features should be considered when calculating Rear GAWR: Rear Axles; Rear Suspension; Brake System; Brakes, Rear Air Cam; Brake Shoes, Rear; Special Rating, GAWR; Wheels; Tires.

**FRONT AXLES**

---

2ASH	AXLE, FRONT NON-DRIVING {Meritor MFS-10-122A} I-Beam Type, 10,000-lb Capacity  <u>Includes</u> : AXLE, FRONT SQUARING to Plus or Minus .015 Inch, using a Special Fixture to Assure Parallelism of Springs  <u>Notes</u> : The following features should be considered when calculating Front GAWR: Front Axles; Front Suspension; Brake System; Brakes, Front Air Cam; Wheels; Tires.
------	--

**FRONT SUSPENSIONS**

---

3ADB	SUSPENSION, FRONT, SPRING Parabolic Taper Leaf, Shackle Type, 10,000-lb Capacity, with Shock Absorbers  <u>Includes</u> : SPRING PINS Bolt and Nut Type : SPRING PINS Rubber Bushings, Maintenance-Free  <u>Notes</u> : The following features should be considered when calculating Front GAWR: Front Axles; Front Suspension; Brake System; Brakes, Front Air Cam; Wheels; Tires.
------	--

**CABS, COWLS, BODIES**

---

16010 COWL Flat Back

**Vehicle Specifications**  
**2021 INTEGRATED CE S BUS (PB105)**

June 12, 2020

<b>Code</b>	<b>Description</b>
16HBA	GAUGE CLUSTER English with English Electronic Speedometer  <u>Includes</u> : GAUGE CLUSTER (5) Engine Oil Pressure (Electronic), Water Temperature (Electronic), Fuel (Electronic), Tachometer (Electronic), Voltmeter : ODOMETER DISPLAY, Miles, Trip Miles, Engine Hours, Trip Hours, Fault Code Readout : WARNING SYSTEM Low Fuel, Low Oil Pressure, High Engine Coolant Temp, and Low Battery Voltage (Visual and Audible)
16HLJ	GAUGE, DEF FLUID LEVEL
16HGH	GAUGE, OIL TEMP, AUTO TRANS for Allison Transmission
16HKT	IP CLUSTER DISPLAY On Board Diagnostics Display of Fault Codes in Gauge Cluster

**FRAMES**

---

1CAC	FRAME RAILS High Strength Low Alloy Steel (50,000 PSI Yield); 10.125" x 3.062" x 0.312" (257.2mm x 77.8mm x 8.0mm); 480.1" (12195mm) Maximum OAL  <u>Includes</u> : CHASSIS PAINT Chassis Painted Prior to Body Mounting : FRAME RAILS All holes Laser Aligned and Machine Punched, Powder Coated Prior to Full Assembly, Assembled in Fixture using "Grade 8" Bolts : FRAME REINFORCEMENT, SPECIAL 3.30" x 1.80" x 0.312" x 31.50" Inverted "L" in Front Shock Absorber Mounting Area
1LLE	BUMPER, FRONT Contoured, Steel, Severe Duty  <u>Includes</u> : BUMPER, FRONT THICKNESS 1/4 Inch
1LNT	CROSSING GATE, FRONT Omit Item  <u>Includes</u> : CROSSING GATE, FRONT Matches Contour of Bumper
1SAM	CROSSMEMBER, REAR, AF (2)
1WJE	WHEELBASE RANGE 276" (700cm) Only

**BRAKES**

---

4091	BRAKE SYSTEM, AIR Dual System for Straight Truck Applications  <u>Includes</u> : BRAKE LINES Color and Size Coded Nylon : DRAIN VALVE Twist-Type : GAUGE, AIR PRESSURE (2) Air 1 and Air 2 Gauges; Located in Instrument Cluster : PARKING BRAKE CONTROL Yellow Knob, Located on Instrument Panel : PARKING BRAKE VALVE For Truck : QUICK RELEASE VALVE On Rear Axle for Spring Brake Release: 1 for 4x2, 2 for 6x4 : SLACK ADJUSTERS, FRONT Automatic (with Air Cam Brakes) : SLACK ADJUSTERS, REAR Automatic (with Air Cam Brakes) : SPRING BRAKE MODULATOR VALVE R-7 for 4x2, SR-7 with relay valve for 6x4/8x6  <u>Notes</u> : Rear Axle is Limited to 19,000-LB GAWR with Code 04091 BRAKE SYSTEM, AIR and Code 04NDC BRAKES, REAR, AIR CAM Regardless of Axle/Suspension Ordered : Rear Axle is Limited to 20,000-LB GAWR with Code 04092 BRAKE SYSTEM, AIR and Code 04NCW BRAKES, REAR, AIR CAM Regardless of Axle/Suspension Ordered
------	---

**Vehicle Specifications**  
**2021 INTEGRATED CE S BUS (PB105)**

**June 12, 2020**

<b><u>Code</u></b>	<b><u>Description</u></b>
4AZS	AIR BRAKE ABS {Bendix AntiLock Brake System} 4-Channel (4 Sensor/4 Modulator) Electronic Stability Program, with Automatic Traction Control
4JCH	BRAKES, FRONT, AIR CAM S-Cam; 15.0" x 5.0"; Includes 20 Sq. In. Long Stroke Brake Chambers
	<u>Notes</u> : Front Axle with 14,000-lb GAWR is Limited to 13,200-lb GAWR when used in Conjunction with 15" BRAKES, FRONT, AIR CAM.
4EXP	BRAKE CHAMBERS, FRONT AXLE {Bendix} 20 SqIn
4NDB	BRAKES, REAR, AIR CAM S-Cam; 16.5" x 7.0"; Includes 30/30 Sq.In. Long Stroke Brake Chamber and Spring Actuated Parking Brake
	<u>Notes</u> : The following features should be considered when calculating Front GAWR: Front Axles; Front Suspension; Brake System; Brakes, Front Air Cam; Wheels; Tires.
4EXU	BRAKE CHAMBERS, REAR AXLE {Bendix EverSure} 30/30 Spring Brake
4SPA	AIR COMPRESSOR {Cummins} 18.7 CFM
4EBS	AIR DRYER {Bendix AD-9} with Heater
4VCY	AIR TANK LOCATION (1) Mounted Left Side to Provide Clearance for Larger Body Builder Supplied Battery Box
4722	DRAIN VALVE {Bendix DV-2} Automatic, with Heater, for Air Tank
4WZT	GVWR LIMITATION FOR BUS with Air Brakes, Limited to 33,000-lbs Maximum to meet FMVSS 121 Requirements, for Conventional Bus

**STEERING**

---

5PSA	STEERING GEAR {Sheppard M100} Power
5710	STEERING COLUMN Tilting and Telescoping
5CAL	STEERING WHEEL 2-Spoke, 18" Dia., Black

**DRIVELINES**

---

6DGJ	DRIVELINE SYSTEM {Dana Spicer} Service Free SPL100, for 4x2/6x2
------	---

**EXHAUST SYSTEMS**

---

7BLA	EXHAUST SYSTEM Single, Horizontal Aftertreatment Device, Frame Mounted Under Right Rail, for Single Long Horizontal Tail Pipe
7SCP	ENGINE EXHAUST BRAKE for Cummins ISB/B6.7/ISL/L9 Engine with Variable Vane Turbo Charger
7WBL	TAIL PIPE (1) Horizontal, Long, Exits Left Side Through Bumper

**ELECTRICAL SYSTEMS**

---

8000	ELECTRICAL SYSTEM 12-Volt, Standard Equipment
	<u>Includes</u> : FUSES, ELECTRICAL SAE Blade-Type : HAZARD SWITCH Push On/Push Off, Located on Top of Steering Column Cover : HEADLIGHT DIMMER SWITCH Integral with Turn Signal Lever : MISCELLANEOUS FEATURES Modular, Loom Protected, Grommets in all Applicable Body Openings, Assembled in Computer Assisted Fixture which Verifies Continuity and Correct Assembly Prior to Installation

**Vehicle Specifications**  
**2021 INTEGRATED CE S BUS (PB105)**

June 12, 2020

<b>Code</b>	<b>Description</b>
	: PARKING LIGHT Integral with Front Turn Signal and Rear Tail Light : STARTER SWITCH Electric, Key Operated : TURN SIGNAL FLASHER : TURN SIGNAL SWITCH Self-Cancelling with Lane Change Feature : TURN SIGNALS, FRONT Includes Reflectors; Flush Mounted : WINDSHIELD WIPER SWITCH 2-Speed with Wash and Intermittent Feature (5 Pre-Set Delays), Integral with Turn Signal Lever : WIRING, CHASSIS Color Coded and Continuously Numbered
8GXK	ALTERNATOR {Leece-Neville BLP4006HN} Brushless, 12 Volt 325 Amp. Capacity, Pad Mount, with Remote Sense
8TTM	BATTERY BOX Steel, with Powder Coat Sliding Tray, 25.25" Wide, for Standard Batteries, 1-3 Battery Capacity, Mounted Left Side Behind Front Axle Perpendicular to Frame Rail
8MSG	BATTERY SYSTEM {Fleetrite} Maintenance-Free, (3) 12-Volt 1980CCA Total, Top Threaded Stud
8XAH	CIRCUIT BREAKERS Manual-Reset (Main Panel) SAE Type III with Trip Indicators, Replaces All Fuses
8TUT	COLLISION MITIGATION SYSTEM Omit
8WXB	HEADLIGHT WARNING BUZZER Sounds When Head Light Switch is on and Ignition Switch is in "Off" Position
8WPB	HEADLIGHTS Halogen, Composite Aero Design, with Daytime Running Lights
8VAZ	HORN, ELECTRIC (2) Trumpet Style, Mounted on Top of Mega-Bracket
8WWJ	INDICATOR, LOW COOLANT LEVEL with Audible Alarm
8XKL	STARTING MOTOR {Mitsubishi Electric Automotive America 90P47} 12-Volt, with Soft-Start

**FRONT END**

---

9WAY	FRONT END Tilting, Fiberglass, with Three Piece Construction  <u>Includes</u> : AIR INTAKE SYSTEM Integrated Pre-Cleaning System to Enhance Air Filter Life : GRILLE Removable; Fiberglass Painted Hood Color : SPLASH SHIELD Integral with Front End Assembly
9WAB	HOOD TILT ASSIST {EASY TILT} Mechanical
9AAE	LOGOS EXTERIOR, ENGINE Badges

**SPEEDOMETER, TOOLS, MISC**

---

10020	CHASSIS PAINT Full Chassis
10060	PAINT SCHEMATIC, PT-1 Single Color, Design 100  <u>Includes</u> : PAINT SCHEMATIC ID LETTERS "NB"
10788	PAINT TYPE Urethane, One or Two Colors, Other than Imron or International.
10XAK	PROMOTIONAL PACKAGE 7 Year Unlimited Miles/km Warranty, Limited Time Program for Allison 2500 Series Transmission on School and Commercial Buses (Supplied directly through Allison)
10XAJ	PROMOTIONAL PACKAGE LED EXT {Sound Off/OptiLuxx} LED Lights

**FUEL TANKS**

---

15SJT	FUEL TANK Top Draw, Steel, Rectangular, 100 US Gal (379L), Includes Protective Cage, with Low Profile Fuel Filler Assembly and Vent Hosing, Mounted Between Frame Rails and Behind Rear Axle
-------	--

**Vehicle Specifications**  
**2021 INTEGRATED CE S BUS (PB105)**

June 12, 2020

<b>Code</b>	<b>Description</b>
15WDT	DEF TANK 12 US Gal (45L) Capacity, Frame Mounted Outside Right Rail, Behind 0 Bow

**WHEELS, TIRES - FRONT**

---

27DUW	WHEELS, FRONT {Accuride 51408} DISC; 22.5x8.25 Rims, Powder Coat Steel, 2-Hand Hole, 10-Stud, 285.75mm BC, Hub-Piloted, Flanged Nut, with Steel Hubs
7382135809	(2) TIRE, FRONT 11R22.5 Load Range H AH37 (HANKOOK), 499 rev/mile, 75 MPH, All-Position

**WHEELS, TIRES - REAR**

---

28DUW	WHEELS, REAR {Accuride 51408} DUAL DISC; 22.5x8.25 Rims, Powder Coat Steel, 2-Hand Hole, 10-Stud, 285.75mm BC, Hub-Piloted, Flanged Nut, with Steel Hubs
7382135809	(4) TIRE, REAR 11R22.5 Load Range H AH37 (HANKOOK), 499 rev/mile, 75 MPH, All-Position

**WHEELS MISC OPTIONS**

---

29580	WHEEL SEALS, FRONT {International} Oil-Lubricated Wheel Bearings
-------	--

**BODY FEATURES**

---

47BAK	BUMPER, REAR Painted, 12" High, 3/16" Thick
47BAR	SUPPORTS, REAR BUMPER Bolted to Frame
47AYB	BODY, REAR Includes Emergency Door  <u>Includes</u> : DOOR, REAR EMERGENCY with Concealed Hinges : HEADER BUMPER Padded, Mounted Over Rear Door; Upholstered to Match Passenger Seat Color
47ARH	BOWS, ROOF 14 ga., One Piece Construction  <u>Includes</u> : BOWS, ROOF Positioned Floor Line to Floor Line, Threaded Through Roof Strainers and Drip Rail
47AMA	FASTENERS, EXTERIOR MOUNTED Stainless Steel Screws; for Fender and Body Exterior Rear View Mirrors, Bumper Mounted Crossing Gate and Body Mounted Stop Arm
47DXG	FASTENERS, HANDRAIL Plusnuts & Screws
47APX	FASTENERS, HEADLINER Screws
47AZL	FLOOR, BODY with Wheel Wells
47PBZ	HANDLE, ASSIST Windshield Side Mounted, Left and Right, Body Color
47APR	HEADLINER, BODY Conventional; 25'11"-34'11" Body Length, Perforated Full Length with Sound Insulation Full Length
47ARP	LIGHT BARS Plastic
47BBH	LINING, SIDE INTERIOR, LOWER Embossed Steel, Clear Coated
47AXT	RUB RAILS, BODY (4) Conventional; Steel, 31'2", 31'11", 32'8", 33'5", 34'2", 34'11", Body Length, Includes Snow Rail  <u>Includes</u> : RUB RAILS Full Length, Primer Coated (Both Sides), Attached to Body without Cuts or Splices
47BBZ	SEALER Extra; Sidewall to Floor, In Wheel Pocket Area, and Rear Wall to Floor
47BEX	SEALER, ADDITIONAL Water-proof Sealer on all Floor Covering Seams

**Vehicle Specifications**  
**2021 INTEGRATED CE S BUS (PB105)**

**June 12, 2020**

<b>Code</b>	<b>Description</b>
47AZE	SIDE SHEET, BODY, EXTERIOR Conventional, 16ga., Smooth, 31'2", 31'11", 32'8", 33'5", 34'2", 34'11", Body Length
47ASG	SKIRT, BODY for Conventional, 14 1/2", 16ga <u>Includes</u> : SKIRT, BODY Extra Smooth Steel Supported by Floor Gussets
47AJW	STEP, FRONT ENTRANCE DOOR 27 1/4" Depth; 14ga Steel <u>Includes</u> : STEP, FRONT ENTRANCE DOOR OPENING, 35 Inch Width; Continuous Bottom to Top
47AUR	TIE DOWNS, BODY Grade 8 Bolts, Every Body Section <u>Includes</u> : TIE DOWNS, BODY with Formed Tab that Fits into Floor Structure to Prevent Turning
47DAJ	COVER, REAR DOOR INSIDE HANDLE Partial Coverage
47DBP	DOOR, ENTRANCE, FRONT Air, Outward Opening, with Split Pane Glass
47DAK	FASTENERS, REAR DOOR Bolts and Nutserts, Rear Door To Body
47DDE	HANDLE, ASSIST, ENTRANCE DOOR Outside Entrance
47DEY	HANDLE, EXTERIOR, REAR Emergency Door; Yellow
47DDH	HOLD BACK, REAR DOOR Stationary, No Cables, with Plastic Cover
47DDU	LATCH, REAR DOOR One Point Slide Bar, Cam Operated, with One Inch Stroke
47EXK	LOCK, VANDAL, ENTRANCE DOOR Integrated Manual Control in Door, with Key
47DEK	LOCK, VANDAL, REAR DOOR with Ignition Starter Interlock
47ECS	COMPARTMENT, TOOL, FWD LEFT Aft of Standard Battery Box, Key Lock, 13"x 15"x 25 1/2"
47EBM	HOLD DOWN, BATTERY For (2) Standard Size Batteries
47LAU	INSULATION, ROOF AND SIDES 1.50", All Models
47MBC	INSULATION, STEPWELL
47LAT	NOISE REDUCTION, ROOF BOW Conventional; Insulation, 31'2", 31'11", 32'8", 33'5", 34'2", 34'11", Body Lengths
47MBA	UNDERCOAT, BODY Fire Resistant, Water Based, TT-C-730 Spec <u>Includes</u> : UNDERCOATING Performed Before and After Mounting on Chassis
47SPB	ALPHA/NUMERIC DECAL GUIDE Quantity 021-30
47MNT	ARROW, RR DOOR, INSIDE Decal; Red, .75" Stroke, Indicating Handle Direction
47MNV	ARROW, RR DOOR, OUTSIDE Decal; Black .75" Stroke, Indicating Handle Direction
47AJB	BODY CERTIFICATION TAG Mylar Label
47APJ	BODY RATING TAG Metal; for State of Texas, Includes Design Capacity and Seat Capacity
47AJC	BODY TAG, METAL Capacity to Include the Total Number of Passengers
47PLX	LETTERS, DEF, I.D. Decal; "DEF ONLY", 1" Black, on DEF Filler Door
47MJR	LETTERS, DOOR, REAR Decals; "EMERGENCY DOOR", 2" Black Letters Inside and Outside
47NGP	LETTERS, FUEL I.D. Paint; "DIESEL FUEL", 2" Black, Adjacent to Fuel Filler Door

**Vehicle Specifications**  
**2021 INTEGRATED CE S BUS (PB105)**

**June 12, 2020**

<b>Code</b>	<b>Description</b>
47MVA	LETTERS, HEADER Decal; "WATCH YOUR STEP", 1" Black, Above Windshield
47MRU	LETTERS, E/E WINDOW, LEFT (2) Decal Sets, "EMERGENCY EXIT", Black Inside and Outside
47NHL	LETTERS, E/E WINDOW, RIGHT (2) Decal Sets, "EMERGENCY EXIT", Black, Inside and Outside
47MAV	LETTERS, SCHOOL BUS SIDE Decal; "SCHOOL BUS"; in 8" Reflective Black Letters, Each Side
47BKK	LETTERS, SCHOOL BUS FRONT/REAR Decal; "SCHOOL BUS"; with 8" Black Reflective Letters, 3M Fluorescent Diamond Grade, Yellow On Front and Rear Cap
47MVC	LETTERS, STEPWELL Decal, "WATCH YOUR STEP", 2.5" Black, Behind Door on Step Riser
47NTE	LOGO, ROOF LINE Decal; Wing and Shield, First Body Section, Above Driver Window and Entrance Door Over Driver Window and Entrance Door
47NMG	OPERATING INSTR, REAR Decal, Inside Rear Emergency Door
47NJA	PAINT COLOR, BODY EXTERIOR 4421 School Bus Yellow
47NKM	PAINT COLOR, BODY INTERIOR 9384 Spring White
47NJS	PAINT COLOR, BUMPER Rear, 0001 Canyon Black
47NKD	PAINT COLOR, ROOF 9219 Winter White, Beginning 5" Above Drip
47NAB	PAINT COLOR, RUB RAILS 0001 Canyon Black
47NJM	PAINT FLASHER BACKGRD 0001 Canyon Black
47NTY	PAINT HOOD AND FENDER To Match Body Exterior
47NKL	PAINT, RUB RAIL Flange to Flange
47NGW	SEAL, RUB RAILS Top Edge, All Rails
47NXH	STRIPING, E/E WINDOW, LEFT {3M} (02) Perimeter, 1" Yellow Fluorescent Diamond Grade
47NWU	STRIPING, E/E WINDOW, RIGHT {3M} (02) Perimeter, 1" Yellow Fluorescent Diamond Grade
47NXN	STRIPING, PERIMETER, REAR {3M} Emergency Door, 1" Yellow Fluorescent Diamond Grade
47NWR	STRIPING, REAR END {3M} 2" Yellow Fluorescent Diamond Grade
47NWT	STRIPING, ROOF HATCH, FRONT {3M} Decal, Perimeter, 1" Yellow Fluorescent Diamond Grade
47NWH	STRIPING, ROOF HATCH, REAR {3M} Decal, Perimeter, 1" Yellow Fluorescent Diamond Grade
47NWJ	STRIPING, SEATLINE {3M} 2" Yellow Fluorescent Diamond Grade
47MTY	WIRING DIAGRAM Schematic, Electrical  <u>Includes</u> : ACCESS PANEL for Wiring Diagram Schematic Located on Body Exterior; Below Driver Window
47SBB	SUB FLOOR, PLYWOOD Conventional; B-B Marine Grade, Less Sealed Edges, 5/8", 5 Ply, for 31'2", 31'11", 32'8", 33'5", 34'2", 34'11", Body Length
47KDC	MONITOR, POST TRIP INSPECTION {Leave No Student Behind} Accessory Controlled, with Push Button Alarm Disable at Rear of Bus Prompts Driver to Walk to Back of Bus and Push Button in Light Bar to Deactivate System
47DNK	SWITCH, LOCATION Steering Wheel; Includes Master Flasher, Flasher On/Off, Red Override, and Door Control  <u>Includes</u> : SWITCH, STEERING WHEEL, LIGHT Includes Illuminated Switches

**Vehicle Specifications**  
**2021 INTEGRATED CE S BUS (PB105)**

June 12, 2020

<u>Code</u>	<u>Description</u>
<b>BODY FEATURES</b>	
48ANT	WINDOW, DRIVER Laminated, Clear
48ANM	WINDOW, ENTRANCE DOOR, BOTTOM Laminated, Clear
48ANE	WINDOW, ENTRANCE DOOR, TOP Laminated, Clear
48BJA	COLOR, WINDOW FRAME, PASS Passenger Window, Natural Aluminum Finish
48BAH	WINDOW, E/E, LEFT (2) Vertical Hinge
48BKP	WINDOW, E/E, RIGHT (2) Vertical Hinge
48AUN	WINDOW, PASSENGER, TINT Conventional; 28% Light, Laminated Glass, 78" Headroom, with 31'2", 31'11", 32'8", 33'5", 34'2", 34'11" Body Length
48ARU	WINDOW, SASH (20) 27" Sections, 9"x 23" Opening
48ASP	WINDOW, SASH +9 SECTIONS (2) 9" x 32 1/4" Opening
48APL	WINDOW, STOPS 12" Opening, Only with 78" Headroom
48PAM	WINDSHIELD 3 Flat Pieces, 73% Light, with Band
48PAY	AISLE POSITION Center, for balanced seating
48PBB	FLOOR COVERING, COLOR Black
48PJR	FLOOR COVERING, TRIM Aluminum
48PJZ	FLOOR COVERING, TYPE {Koroseal} All Body Lengths
48RZJ	STEP TREADS {Koroseal} Pebble Top with White Nosing, with Non-Metal Backing
48PAV	WHEEL POCKET COVER Plastic, ABS
48PKC	HOSE CLAMPS, HEATER HOSE Constant Torque for Heater System
48PKR	FAN, DEFOG LEFT CENTER 6.50" Diameter, Black, Mounted Left of Center Post, 2-Speed Switch in Panel
48PPM	HEATER CUT OFF, VALVE Ball, with Butterfly Handle
48PPP	HEATER CUT OFF, VALVE INSIDE Brass Ball, Inside Forward of Driver Heater
48GHC	HEATER, DRIVER 90,000 BTU, with Defroster and without Rear Heat Duct
	<u>Includes</u>
	: AIR FILTER
	: HEATER HOSES Premium
	: HOSE CLAMPS, HEATER HOSE Mubea Constant Tension Clamps
48PMJ	HEATER, PASS, LT REAR 84,500 BTU
	<u>Includes</u>
	: AIR FILTER
48PNW	HEATER, WATER PUMP {2 MPU 12} Self Priming, with Plastic Housing
48UCP	ROOF HATCH, FRONT {Transpec 1975-028-121-03} with Outside Release, with English Decals
48UCR	ROOF HATCH, REAR {Transpec 1975-028-121-03} with Outside Release, with English Decals
48PPS	ROOF VENT, FRONT Static
48PPC	SWITCH, HTR FAN, REAR, LT with 84,500 BTU Rear Heater Only
48NAT	FITTINGS, AIR SEAT for Driver Seat

**Vehicle Specifications**  
**2021 INTEGRATED CE S BUS (PB105)**

June 12, 2020

<b>Code</b>	<b>Description</b>
48PUT	NUTS, BELT MOUNTING Standard Nuts For Seat Belt Mounting
48TMY	SEAT, DRIVER {National 2000} Air Suspension Dual Shock, High Back with Integral Headrest, Isolated, with 2 Position Front Cushion Adjustment, 6 to 17 Degree Seat Back Adjustment, Mechanical Lumbar Support, Includes Additional Back Padding  <u>Includes</u> : SEAT BELT, DRIVER Adjustable D-Loop Seat Belt, Single Locking Retractor
48XPX	UPHOLSTERY, BARRIER, TYPE (1-2) Prevaill, 42 oz.
48PVN	UPHOLSTERY, DRIVER SEAT, COLOR Drivers Seat, Gray
48PVA	UPHOLSTERY, DRIVER SEAT, STYLE Plain, with Cloth Insert
48PWR	UPHOLSTERY, DRIVER SEAT, TYPE Prevaill, 42 oz.
48RAE	BARRIER, CRASH, AFT ENTRY DOOR 39", 1 Leg
48RAL	BARRIER, CRASH, AFT DRIVER 39", 1 Leg
48RGR	HAND RAIL, ENTRANCE DOOR, AFT Stainless Steel, 4", Above Step
48RGE	HAND RAIL, ENTRANCE DOOR, FWD Stainless Steel; Curved
48ACN	SEAT BELT, DRIVER, COLOR with Blaze Orange Seat Belt Webbing
48USV	SEAT BACK, PASSENGER High Back
48XGC	SEAT,PASS,3PT,LT,26",2 LEG {BTI Seating System} (01) High Back, with 3 Point Seat Belts
48YAH	SEAT,PASS,3PT,LT,39",2 LEG {BTI Seating System} (12) High Back, with 3 Point Seat Belts
48YAX	SEAT,PASS,3PT,RT,39",2 LEG {BTI Seating System} (13) High Back, with 3 Point Seat Belts
48PWD	UPHOLSTERY, PASS SEATS, COLOR Gray, for Seats, Barriers and Head Bumpers
48PHR	UPHOLSTERY, PASS SEATS, TYPE Prevaill, 42 oz.; for (25-26) Seats
48RLX	CUSHION, SEAT 15" Depth  <u>Includes</u> : WARRANTY Four Years
48RRA	UPHOLSTERY, SEAT, STITCHING Single  <u>Includes</u> : WARRANTY Two Years

**BODY FEATURES**

---

49AMJ	ALARM, BACKING {Ecco #575} 107 db
49AMT	CIRCUIT, PROTECTION Breakers, Manual Reset in Lieu of Fuses  <u>Includes</u> : ACCESS PANEL for Body and Chassis Fuses/Circuit Breakers Located on Body Exterior; Below Driver Window
49AJH	CONNECTION, LIGHTS Cluster, Clearance and Side Marker To Tail Lights
49BCN	FLASHER SYSTEM (8) Warning Lights, 8-Lamp System, Electronic Relay Flasher, Non-Sequential Operation, Red Lights Activate with Door Open
49DBR	HOOD, WARNING LAMP (4) Black, 8-Lamp System, One Hood Above Two Lights
49APA	LIGHT, DRIVER, CEILING Deluxe, with Separate Switch, Mounted in Light Bar

**Vehicle Specifications**  
**2021 INTEGRATED CE S BUS (PB105)**

**June 12, 2020**

<b>Code</b>	<b>Description</b>
49JBU	LIGHT, ENTRY DOOR {Sound Off/OptiLuxx} LED; 4" Oval; Light Mounted in Skirt Behind Entrance Door, Wired To Step Light
49BCR	LIGHT, EXTERIOR, CHECK Automatically Activates Lights for Pre Trip Inspection
49DAG	LIGHT, INDIC, WARNING LIGHTS LED Type; Red and Amber
49JBV	LIGHT, LICENSE PLATE {Sound Off/OptiLuxx} LED, with Mounting Gasket
49JBW	LIGHT, STEP {Sound Off/OptiLuxx} 4" Round LED, White, Wired to Clearance Lights, Operated by Entrance Door
49EYH	LIGHT, STROBE LED, Specialty Man. Co. 845-4020-100, Low Profile, Double Flash, 4.50" High
49AHV	LIGHT, STROBE, STOP SIGN, FRT In Lieu Of Flashing Lights Furnished with Stop Sign, Speciality
49AHY	LIGHT, STROBE, STOP SIGN, REAR In Lieu of the two Flashing Lights Furnished with Stop Sign, Speciality
49ZNC	LIGHTS, BACK UP (2) {Sound Off/OptiLuxx} 4" Round, White, LED, with Flange
49JBS	LIGHTS, CLUSTER {Sound Off/OptiLuxx} Oval, 4 Internal LEDs per Light; Amber Front and Red Rear
49BYZ	LIGHTS, DIRECTIONAL, REAR (2) {Sound Off/OptiLuxx} LED, 7" Round Amber
49PTB	LIGHTS, DIRECTIONAL, SIDE {Sound Off/OptiLuxx} Rectangular LED Armor Type, Amber, 1 Each Side, Second Bow Section Aft of Entrance Door Between 2nd & 3rd Rub Rail
49APZ	LIGHTS, DOME Conventional; Rectangular Recessed Type, Two Full Rows, for 31'2", 31'11", 32'8", 33' 5", 34'2", 34'11", Body Lengths
	<u>Includes</u> : WIRING HARNESS Main Body Wiring Harness Accessed by Removing Dome Light
49BYV	LIGHTS, MARKER, FRONT, REAR {Sound Off/OptiLuxx} Rectangular LED, Armored, (8) Four Amber Front and Four Red Rear
49EAW	LIGHTS, MARKER, SIDE {Sound Off/OptiLuxx} Rectangular LED, Armored Type, Intermediate, Centered; Required for Units 30 Foot or Longer
49BYT	LIGHTS, STOP (2) {Sound Off/OptiLuxx} and Tail; 7" Round LED, Red
49ZNG	LIGHTS, STOP & TAIL ADDITIONAL (2) {Sound Off/OptiLuxx} 4" Round LED, Red, with Flange
49NGJ	LIGHTS, WARNING (8) {Sound Off/OptiLuxx} (4) 7" Round Red Strobing LED and (4) 7" Round Amber Strobing LED, 2 Front, 2 Rear Each Color
49BZU	RADIO, ENTERTAINMENT {Custom Radio} AM/FM Stereo/USB Input, Includes Antenna and Cable, with Public Address System
49ANU	SOURCE, POWER 12 VDC, Mounted In Dash
49AWV	SPEAKERS AND WIRING (8) Flush Mounted In Light Bar
49BMA	STOP ARM, FRONT {Specialty 2980} Air, 18" Octagon, Double Sided, 1/2" White Border, Hi Intensity Grade, Strobing LED Lights
49BWG	STOP ARM, LEFT REAR {Specialty 2981} Air, Hi Intensity, Strobing LED Lights, with Letters on Back
49AMD	SWITCH, DRIVER PANEL, TYPE Rocker
49ANH	SWITCH, MAGNETIC, DISCONNECT Master, Ignition Operated, All Body Circuits
49EVL	SWITCH, NOISE SUPPRESSION Actuator Legend States, "NOISE SUPP ", for Separate Solenoid, with Red Switch in Panel
49AMY	SWITCH, REAR DOOR BUZZER for Emergency Door
49BXN	SWITCH, RED, OVERRIDE WARNING Wired Hot, with ESC, Mounted Left of Driver

**Vehicle Specifications**  
**2021 INTEGRATED CE S BUS (PB105)**

**June 12, 2020**

<b>Code</b>	<b>Description</b>
49BLM	WIRING, TWO WAY RADIO Power and Ground Connection Only; Connection in Flasher Plate Area with 20 Amp Fuse Protection
49BLL	WIRING, VIDEO SYSTEM Power and Ground Connection Only; Connection in Flasher Plate Area with 20 Amp Fuse Protection
49HES	MIRROR, BRACE, EXTERIOR Telescoping for Breakaway Bracket
49BVG	MIRROR, CROSS VIEW, EXTERIOR {Mirror Lite High Definition Busboy} for Left & Right Side; Black, Heated
49EGB	MIRROR, INSIDE 10" x 30", Clear
49EJC	MIRROR, REAR VIEW, EXTERIOR {Rosco} 7" x 6" Lower Section, Breakaway Bracket, Motorized Head, Heated, Black
49ENK	VISOR, INTERIOR, LEFT FRONT 6" x 30", Transparent, For Left Windshield
49GDS	COMPARTMENT ABOVE DRIVER Left of the Driver  <u>Includes</u> : COMPARTMENT ABOVE DRIVER Compartment Size: 39" x 10" x 10" : HINGES Piano Type
49GGE	FIRE EXTINGUISHER, DRIVER AREA 5 lb 2A-40BC Minimum with Flexible Hose and Metal Nozzle
49GAY	KIT, BODY FLUID Texas
49EBA	KIT, FIRST AID Plastic; 24 Unit, Spec State
49MZV	LATCH, COMPARTMENT Locking, for Overhead Storage Compartment
49GDG	PADDING COMPART ABOVE DRIVER Window; Safety Equipment Compartment, with Cutout for Dome Light
49GLP	REFLECTORS, REAR (2) 3", Red, Mounted with Screws
49GLM	REFLECTORS, SIDE, FRONT (2) 3", Amber; 1 Aft Drivers Window Left, 1 Aft Entrance Door Right, Mounted with Screws
49GLA	REFLECTORS, SIDE, INTERMEDIATE (2) 3" Amber, 1 Each Side, Mounted with Screws, Below The Third Rub Rail From the Top
49GLG	REFLECTORS, SIDE, REAR (2) 3", Red, Mounted with Screws
49GEH	SAFETY TRIANGLES Warning Reflectors, Mounted on Drivers Barrier 9.5" Above Floor
49GUB	CUTTER, SEAT BELT {TIE TECH Safecut} for Cutting Seat Belts
49GCC	CUTTER, SEAT BELT, LOCATION Centered on Inside of Driver Compartment Lid
49JAC	DEF FILLER DOOR with Non-Locking Latch
49MZS	FUEL FILLER DOOR Non-Locking, Lever Latch, Spring Loaded to Hold in Open Position
49CKT	FUEL FILLER PIPE Low Profile Neck Cap and Vent Hosing, for Use with Right Side Fill for Between the Rail Fuel Tanks, for Above the Floor Fuel Fill, for 25 GPM Fill Rate Only
49GUM	INSPECTION PLATE Fuel Sending Unit 8" x 8" Steel
49GUY	MUD FLAPS, REAR WHEELS (2) Anti-Spray, Anti-Sail
49GWW	WINDSHIELD WASHER Kit; 6 Quart Capacity, Bottle  <u>Includes</u> : WINDSHIELD WASHER ELECTRICAL CONNECTIONS Sealed and Locking Type
49GBV	WINDSHIELD WIPERS (2) Cowl Mounted  <u>Includes</u>

**Vehicle Specifications**  
**2021 INTEGRATED CE S BUS (PB105)**

June 12, 2020

<b><u>Code</u></b>	<b><u>Description</u></b>
49UBZ	: WINDSHIELD WIPERS CONTROL Single Motor, Overlapping Wipe Pattern STATE OF OPERATION Texas

**Services Section:**

**WARRANTY**

---

40126	WARRANTY Standard for CE, RE, BE School Bus Models, Effective with Vehicles Built March 1, 2017 or Later, CTS-3304H
40RAP	SERVICES, TOWING {Navistar} Service Call to 24-Month/Unlimited Mileage to the Nearest IC Bus Dealer for Navistar Warrantable Failure as Contract Defined; Includes Engine Failure if Supplier Declines Tow Coverage & ESC Supplied thru Navistar; \$1100 (USA) Maximum Benefit per Incident
40PKZ	SRV CONTRACT, EXT VEH COVERAGE {Navistar} To 24-Month/50,000 Miles (80,000 km), Covers 100% Parts and Labor; Includes Body; Excludes Extending Warranty for Engine, Transmission, Perforation or Corrosion of Cab/Cowl Structure and Paint

**BODY FEATURES**

---

49GVN	WARRANTY 5-Year, Limited 26 - 3 POINT SEAT INCENTIVE SET GOVERN SPEED @ 65 MPH BERGSTROM AC 126K W/DUAL TM-21 COMPRESSORS, FRONT/REAR/DASH, DEFROSTER (DIESEL) DEFROSTER KIT - WW SALES DOT INSPECTION WW SALES PRE DELIVERY INSPECTION WW SALES WEIGHT SLIP WW SALES ADDITIONAL SPA INVOICE CREDIT
-------	---

**Financial Summary**  
**2021 INTEGRATED CE S BUS (PB105)**

June 12, 2020

<u>Description</u>	(US DOLLAR)	<u>Price</u>
Net Sales Price:		\$100,620.00

Please feel free to contact me regarding these specifications should your interests or needs change. I am confident you will be pleased with the quality and service of an IC Corporation vehicle.

PRICE PER VEHICLE: \$100,620.00

BUY BOARD FEE: \$800.00

PRICE DOES NOT INCLUDE BUY BOARD FEE \$800 PER PURCHASE ORDER, PLEASE ADD IF APPLICABLE. BUY BOARD CONTRACT #549-17

40PKZ WARRANTY: LONGHORN BUS WILL COVER THE WARRANTY FOR 24 MONTHS/UNLIMITED MILEAGE, \$0.00. (NAVISTAR WILL COVER FIRST 50K MILES. 50K PLUS MILES UP TO THE 24 MONTH PERIOD ENDING WILL BE COVERED BY LONGHORN BUS PER TEXAS STATE SPECS.)

**Approved by Seller:**

**Accepted by Purchaser:**

\_\_\_\_\_  
Official Title and Date

\_\_\_\_\_  
Firm or Business Name

\_\_\_\_\_  
Authorized Signature

\_\_\_\_\_  
Authorized Signature and Date

**This proposal is not binding upon the seller without Seller's Authorized Signature**

\_\_\_\_\_  
Official Title and Date

**The TOPS FET calculation is an estimate for reference purposes only. The seller or retailer is responsible for calculating and reporting/paying appropriate FET to the IRS.**

**The limited warranties applicable to the vehicles described herein are Navistar, Inc.'s standard printed warranties which are incorporated herein by reference and to which you have been provided a copy and hereby agree to their terms and conditions.**

## Service Agreements for Contract Year 2020/2021

As of Wednesday, July 8, 2020, HARLETON ISD has proposed the selection of the following services:

<b>Academic Content Cooperative test1</b>	
Academic Content Cooperative	\$9136.00
<b>Administrative Leadership Cooperative test1</b>	
Administrative Leadership Cooperative	\$850.00
<b>Comprehensive Business/Finance/Funding and Accountability/OnDataSuite Cooperative test1</b>	
Comprehensive Business/Finance/Operations/Funding/Accountability/OnDataSuite Cooperative	\$6932.00
<b>Digital Learning test1</b>	
Digital Learning Basic Membership Fee	\$950.00
Library and Digital Media Services (LDMS)	\$775.00
Discovery Education Streaming	\$1790.00
BrainPOP	\$1883.00
Online Internet Safety	\$400.00
<b>DMAC Solutions test1</b>	
CIA Alignment	\$500.00
Option 1 (6 uploads/year)	\$269.00
FormWorks	\$300.00
lead4ward	\$1185.00
Appraisals	\$750.00
PGP	\$800.00
RTI	\$1500.00
PlanWorks	\$1500.00
State Assessment	\$1500.00
TAG	\$1050.00
TEKScore	\$1000.00
<b>Fine Arts Cooperative test1</b>	
Fine Arts	\$500.00

<b>Gifted and Talented test1</b>	
G/T	\$8251.00
<b>Health, Nurses, and PE Cooperative test1</b>	
Nurses, Health, and PE	\$500.00
<b>Legal Consulting Services test1</b>	
Legal Consulting Services	\$250.00
<b>NCCER Accredited Training Sponsor Support Services test1</b>	
NCCER ATS Services	\$800.00
<b>Personnel Services Cooperative test1</b>	
Personnel Cooperative	\$700.00
Online Application Consortium	\$1718.00
<b>Purchasing Cooperative test1</b>	
Purchasing Cooperative	\$758.00
<b>Rosetta Stone test1</b>	
Rosetta Stone	\$612.00
<b>Professional School Counselor test1</b>	
Professional School Counselor	\$660.00
<b>School Safety and Security Cooperative test1</b>	
School Safety Cooperative	\$3900.00
<b>Superintendent Academy test1</b>	
Superintendent Academy	\$800.00
<b>TEKS Resource System test1</b>	
TEKS Resource System	Call For Pricing*
TExGUIDE	Call For Pricing*
<b>TxEIS/Ascender - Information Management Systems (IMS) test1</b>	
TxEIS/Ascender Business	\$12628.00
Hosting TxEIS/Ascender Business OR Student/TxSuite	\$2557.00
<b>Bilingual/ESL Title III SSA test1</b>	

Title III Bilingual/ESL - SSA	Call For Pricing*
<b>Region 7 ESC Head Start / ISD Cooperative Agreement test1</b>	
Head Start	\$0.00
<b>Total of proposed selections</b>	<b>\$67,704.00</b>

# TRAVEL REQUEST AUTHORIZATION FORM

(PLEASE PRINT CLEARLY)

TO: Crystal Brock  
Principal/Department Head

DATE: 6/26/2020

FROM: Elwen Wright  
Attendee

CAMPUS/  
DEPARTMENT: High School

HOME  
ADDRESS: 348 Smyrna Cutoff  
Diana, TX 75040

NOTE: IF REGISTRATION IS ALL THAT IS REQUESTED, SIMPLY SUBMIT THIS FORM WITH PROPER DOCUMENTATION ATTACHED TO A REQUISITION.

Convention/Conference Name Systems & Teacher Trainings - Oberth  
Destination Fredericksburg, TX  
Convention dates Aug 1 - 2  
Date Leaving July 31  
Date Returning Aug 2  
Number of Duty Days Involved \_\_\_\_\_

## ESTIMATED EXPENDITURES:

\$ _____	Transportation AIR _____ AUTO <input checked="" type="checkbox"/> OTHER _____
\$ 300.00 (2 nights)	Riding with <u>1 hr 12 min / 396 miles</u>
\$ 109.00	Estimated miles @ _____ cents per mile _____
\$ See app attached -	Lodging _____
\$ _____	Sharing room with _____
	Meals _____
	Registration _____
	Total _____

TRAVEL AUTHORIZATION REQUEST FORM MUST BE ATTACHED TO A REQUISITION AND SUBMITTED TO THE BUSINESS OFFICE VIA SKYWARD AT LEAST 10 DAYS PRIOR TO REGISTRATION.

APPROVED: Crystal Brock  
Principal/Department Head



TEACHER TRAINING APPLICATION 2020

Oberth (Transonic) – Texas

Name of School: Harleten High School ISD: Harleten

Address: 17000 Hwy 154 Harleten TX 75645

Name of Principal: Crystal Bruck

Principal Phone: 903-777-2711 Principal E-mail: bruckcrystal@harletenisd.net

Name of Teacher: Gwen Wright

Teacher Work Phone: 903-777-2711 Teacher Cell Phone: 903-746-6123

Teacher School E-mail: wrightgwen@harletenisd.net Teacher Personal E-mail: wright31e99@yahoo.com

Name of Accounting/Procurement Representative: Tina Cox

Accounting Contact Phone: 903-777-2372 Accounting Contact E-mail: COXTINA@harletenisd.net

This is not a binding contract. This application serves only as a place holder for your training. An Agreement between Fredericksburg Education Initiative, Inc. dba SystemsGo and your school for Curricula License and Related Services will follow, upon administrative approval.

FREQUENTLY ASKED QUESTIONS

- 1. Please indicate preferred location and date: a. Roswell, NM July 18-19, 2020 b. Fredericksburg, TX. August 1-2, 2020
2. What is the cost to participate? \$3,000 covers teacher training, annual licensing fee, technical and launch support.
3. What is a Monitoring Performance System? For purposes of this program, a monitoring performance system is a system implemented by both the school and SystemsGo...
4. Will designated teacher/representative need to bring a laptop to teacher training? Yes.
5. Procurement Process? SystemsGo is a sole source vendor for the curriculum, teacher training and launch support provided to our schools.

Please submit this completed application by fax or email. Fax: (830) 997-3577 • Email: info@systemsgo.org

SystemsGo, PO Box 2648, Fredericksburg, TX 78624 • Office: (830) 997-3567



***Engineering Design and Problem Solving  
Oberth Level  
Synopsis***

**Prerequisite:** Tsiolkovsky level

**First Semester**

**Goals:** Application of the student's Tsiolkovsky level understanding and learning; the furthered development of 21<sup>st</sup> Century skills; and the design, development, and testing of a transonic vehicle.

The first semester encapsulates the “early” design aspects of the vehicle’s performance and configuration. The students, or project team, will develop a flight profile using Excel. The profile will predict all flight dynamics, determine propulsion performance and stresses that will be applied to the vehicle during testing. By the end of the semester, the students have concluded a strong configuration of the vehicle and have the opportunity to travel to NASA–Johnson Space Center Houston—to present the profile to flight engineers. Flight profiles undergo critique and additional work as needed. Includes the history of space exploration, with focus on current initiatives by government and private industries.

**Second Semester**

**Goals:** Application of the student's first semester's understanding and learning; the furthered development of life and work skills; and the final development, testing, and analysis of the test vehicle.

The second semester begins with a review of the industry approved Research Design and Development Loop (RD&D Loop) which will be used to design and build a transonic rocket. The goal is for the vehicle to exceed 344m/s i.e. to break the sound barrier.

The students, as a project team, develop the overall vehicle design using computer modeling—the design incorporates all the content mastered in the first semester concerning rocket flight. After being selected to component teams (propulsion, air frame and fins, recovery, etc.), students are instructed about timeline management, critical decision-making and project management. Specific component teams develop a timeline for production of their component, then begin the research phase concerning the problem aspects of their component. Problem aspects include function, mass envelope, simplicity etc. A final design is developed, usually in the form of mathematical calculations, that allows the team to move forward in the design process. The mathematical calculations are reviewed by a professional in aerospace industry offering criticism of the calculations but no insight into how it may be approved. The mathematical design is then converted to a working drawing representing the design of the component. The team begins extensively researching materials and developing decision matrices based on component function. Material variables include safety, cost, ability to work with, acquisition time etc. The team then presents a Critical Design Review (CDR) to the overall project team. If a “thumbs-up” is received from the overall project team, it is time to move forward to the development of the component. If not, redesign is needed until it is accepted. After materials acquisition and individual components are complete, all systems (components) must be integrated to complete the class project. At this point the vehicle must pass the Flight Readiness Review (FRR), prior to launch, to ensure adherence to all safety guidelines. After vehicle has been tested students enter the final phase of the project by evaluating vehicle performance. Students use a Fault Tree Analysis (FTA) to aide in the writing and presenting of a complete Post Mission Analysis (PMA). The PMA is used as the second semester final exam.



*Engineering Design and Problem Solving  
Oberth Level  
Scope & Sequence*

**1st Semester:**

- History of Space Travel
  - Early History
  - Breaking the Sound Barrier with Chuck Yeager
  - Apollo Era
  - Current Developments
- Review RD&D Loop
- Ball Toss Modeling/Excel Basics
- Transonic Flight Profile Math Model
- Flight Profile Presentations
- Research and Component Testing
- Preliminary Design Review

**2nd Semester:**

- Component Research
- Critical Design Review
- Fabrication/Testing
- Systems Integration/Fabrication
- Flight Readiness Review
- Vehicle Test
- Fault Tree Analysis
- Post Mission Analysis
- Current Events Projects

*CONSTRUCTION PLANS FOR*  
*HARLETON INDEPENDENT SCHOOL DISTRICT*  
**HIGH SCHOOL SOFTBALL FIELD HOUSE**  
**AND PARKING AREA PROJECT**

*HARRISON COUNTY, TEXAS*  
*JULY 2020*

**HARLETON I.S.D. BOARD**

**SUPERINTENDENT**

**JAY RATCLIFF**

- PAT MCGILL - PRESIDENT**
- BRIAN DEGNER - VICE PRESIDENT**
- BRAD NIXON - SECRETARY**
- KEVIN WRIGHT - PLACE 1**
- HARVEY FOX - PLACE 3**
- SHAUN BORDEN - PLACE 4**
- JACOB MUEHLSTEIN - PLACE 7**

This document is released for the purpose of interim review under the authority of Stanley R. Hayes, P.E. 72141 on 7-7-20. It is not to be used for construction.



**VICINITY MAP**

NO SCALE

SUBMITTED BY :



**HAYES ENGINEERING, INC.**

Texas Registered Engineering Firm F-1465  
 2126 Alpine St. Longview, TX 75601-3401  
 PH. (903) 758-2010, FAX. (903) 758-2099  
 www.hayesengineering.net



STANLEY R. HAYES, P.E.  
 PROJECT MANAGER

DATE

APPROVED BY:

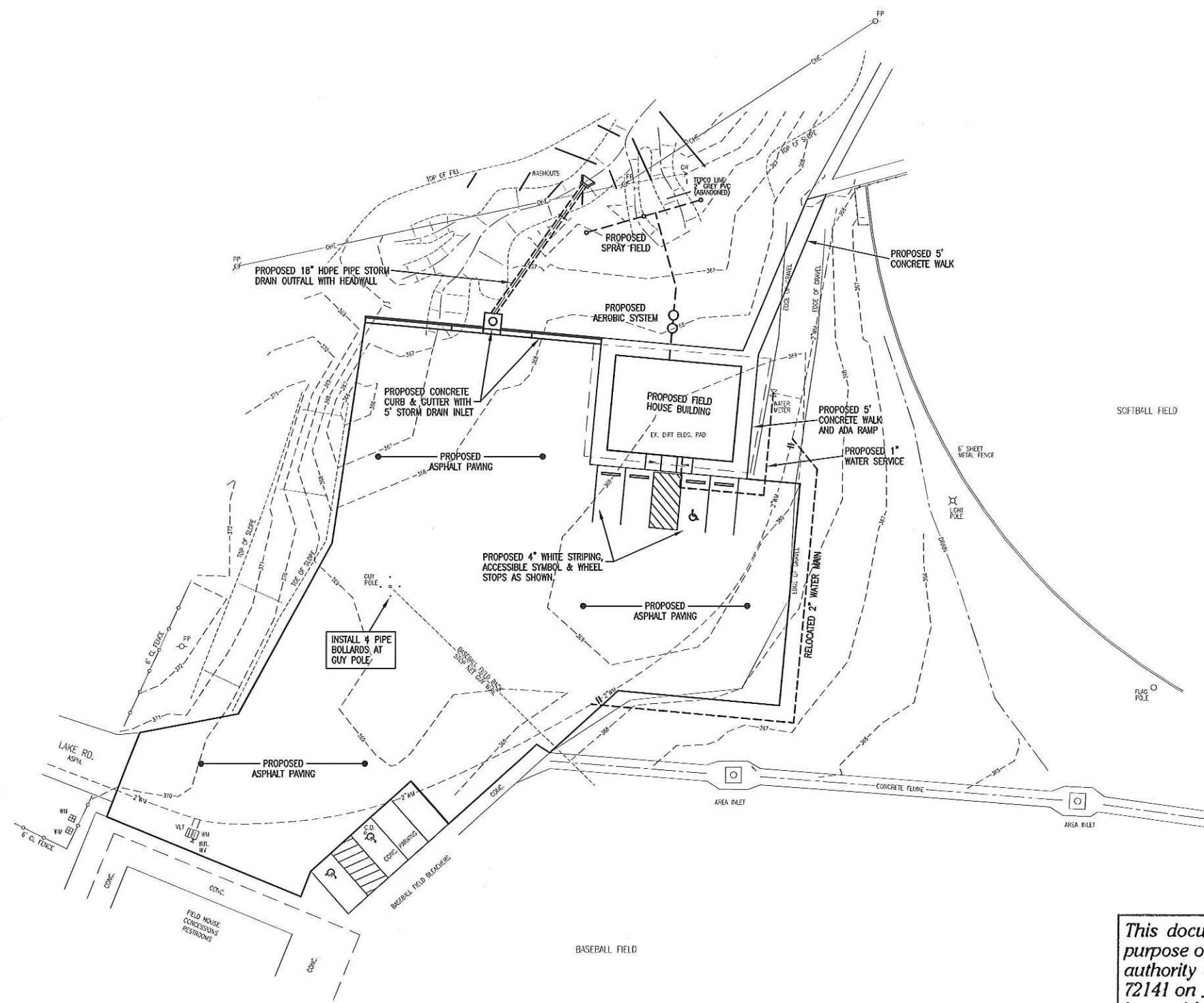
HARLETON I.S.D.

JAY RATCLIFF  
 SUPERINTENDENT

DATE

**SHEET INDEX**

SHEET NO.	DESCRIPTION
1	TITLE SHEET, SHEET INDEX
2	AREA SITE PLAN
3	PROPOSED FLOOR PLAN
4	PROPOSED GRADING & DRAINAGE PLAN
5	PROPOSED UTILITY PLAN
6	MISCELLANEOUS DETAILS 1
7	MISCELLANEOUS DETAILS 2



This document is released for the purpose of interim review under the authority of Stanley R. Hayes, P.E. 72141 on 7-7-20. It is not to be used for construction.

AREA  
SITE PLAN

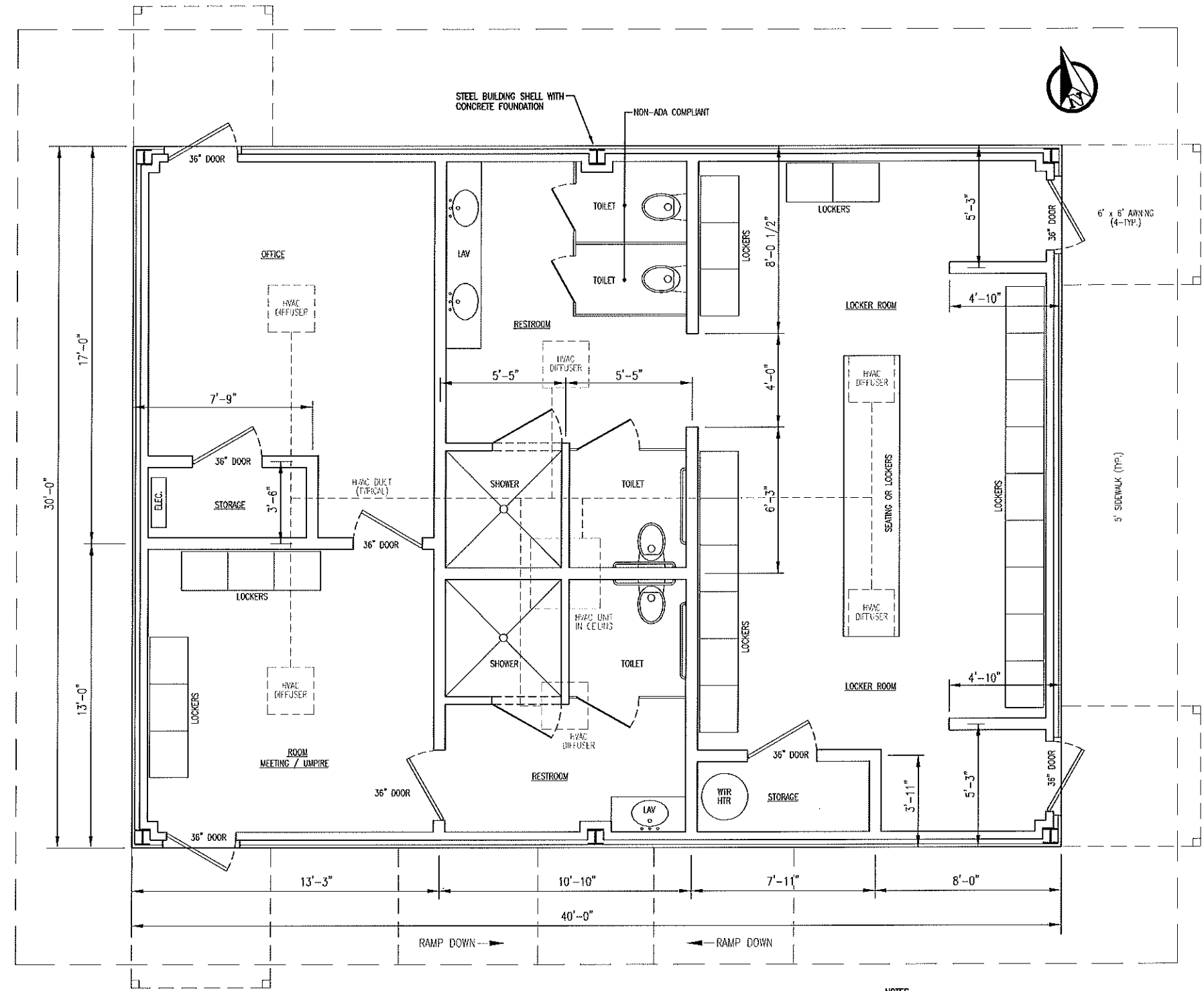
HARLETON I.S.D.  
HIGH SCHOOL SOFTBALL FIELD HOUSE  
AND PARKING AREA PROJECT  
HARRISON COUNTY, TEXAS

**HAYES ENGINEERING, INC.**  
Texas Registered Engineering Firm F-1465  
2108 Alpine St., Longview, TX 75601-2401  
Tel.: (903) 758-2010 • Fax: (903) 758-2099



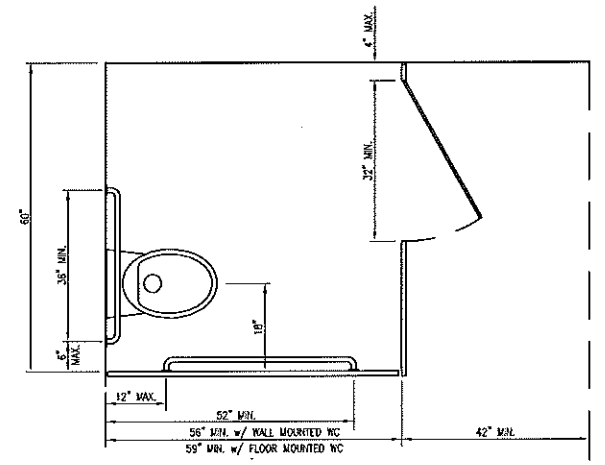
DRAWN BY: R.L.C.  
CHECKED BY: S.R.H.  
DATE: JULY 2020  
SCALE: 1"=20'  
JOB NO.: HISD-20-01

SHEET  
**2**  
OF 7 SHEETS

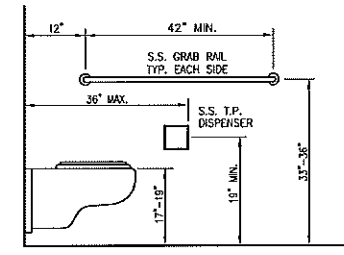


**FIELD HOUSE FLOOR PLAN**  
SCALE: 3/8" = 1'-0"

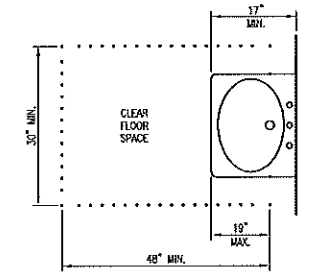
- NOTES**
1. ALL ASPECTS OF THIS BUILDING, FROM EXTERIOR TO INTERIOR, SHALL BE TAS/ADA COMPLIANT, EXCEPT AS NOTED.
  2. CONCRETE FOUNDATION DESIGN AND CONSTRUCTION SHALL BE THE RESPONSIBILITY OF THE BUILDING SUPPLIER AND/OR CONTRACTOR.
  3. STEEL BUILDING SHELL, CONCRETE FOUNDATION AND INTERIOR FINISHING SHALL MEET ALL APPLICABLE BUILDING CODES.
  4. INTERIOR FRAMING SHALL BE 2x6 WITH 1/2" SHEETROCK.
  5. AIR CONDITIONING/HEATING SYSTEM SHOWN IS FOR ILLUSTRATIVE PURPOSES ONLY. DESIGN, SIZING & INSTALLATION SHALL BE BY TEXAS LICENSED HVAC PERSONNEL.
  6. INTERIOR PLUMBING SYSTEM AND AERobic SYSTEM SHALL BE DESIGNED, SIZED & INSTALLED BY TEXAS LICENSED PLUMBING PERSONNEL.
  7. BUILDING TO HAVE DROP CEILING WITH ACOUSTIC PANELS. CEILING TO BE 8'-0" ABOVE FINISHED FLOOR.
  8. OWNER TO COORDINATE ELECTRICAL SERVICE WITH POWER COMPANY.
  9. OWNER TO COORDINATE WITH ELECTRICIAN FOR DESIRED ELECTRICAL COMPONENTS. ALL ELECTRICAL EQUIPMENT, WIRING, CONNECTIONS ETC. TO BE APPROVED & INSTALLED BY TEXAS LICENSED ELECTRICAL PERSONNEL.



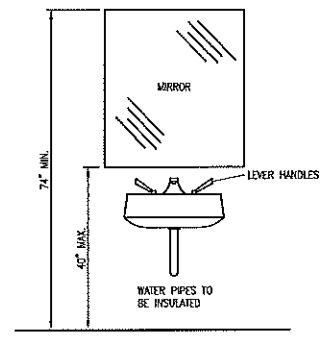
WATER CLOSET TOP VIEW



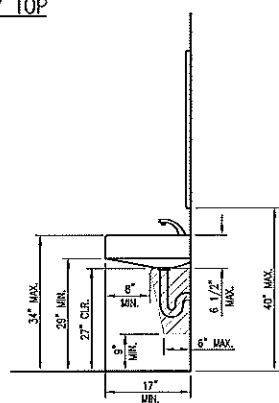
WATER CLOSET SIDE VIEW



LAVATORY TOP



LAVATORY FRONT



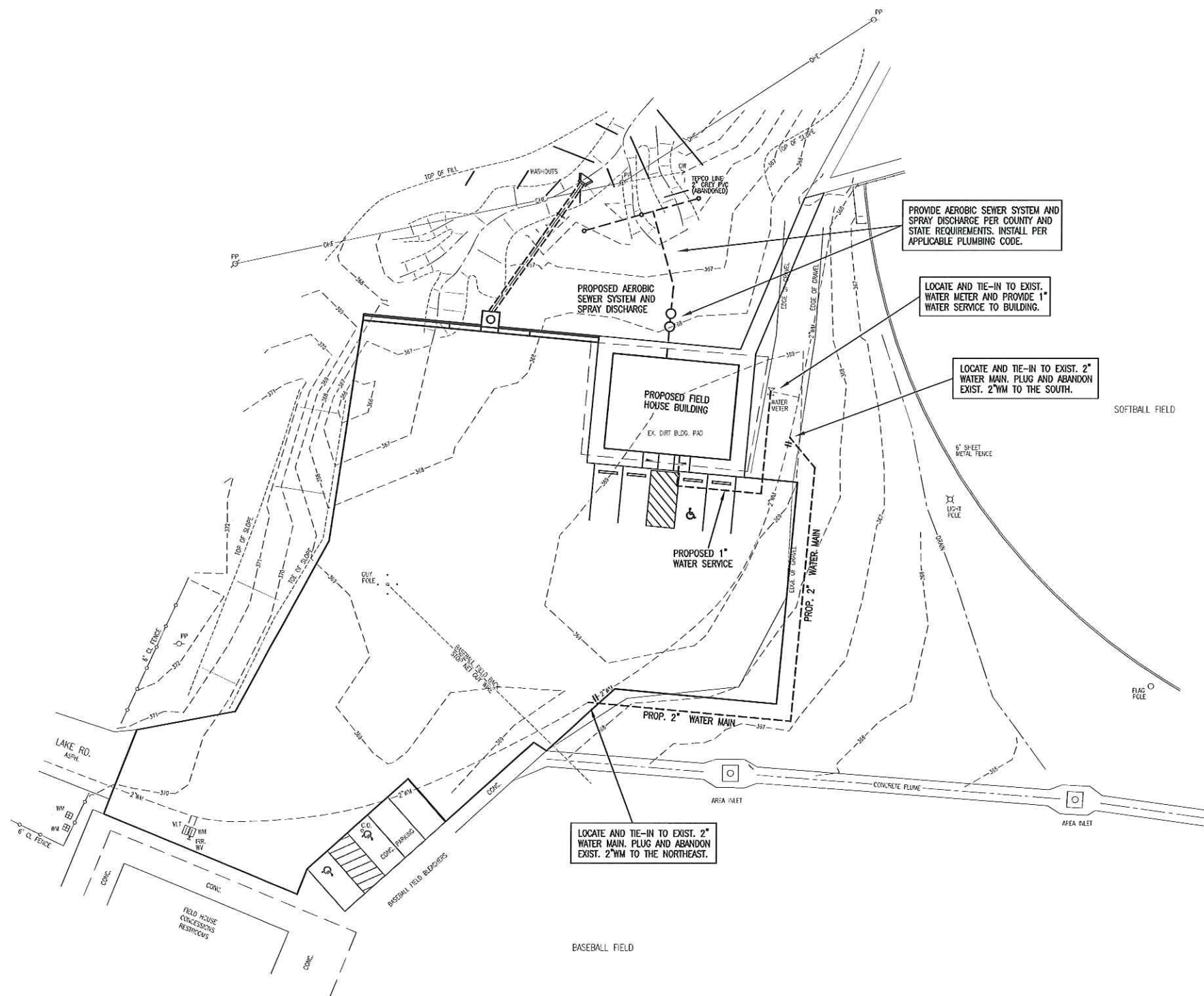
LAVATORY SIDE

NOTE: EQUIPMENT PERMITTED IN SHADED AREA

**TAS/ADA REQUIREMENTS**  
N.T.S.

This document is released for the purpose of interim review under the authority of Stanley R. Hayes, P.E. 72141 on 7-7-20. It is not to be used for construction.





PROVIDE AEROBIC SEWER SYSTEM AND SPRAY DISCHARGE PER COUNTY AND STATE REQUIREMENTS. INSTALL PER APPLICABLE PLUMBING CODE.

LOCATE AND TIE-IN TO EXIST. WATER METER AND PROVIDE 1" WATER SERVICE TO BUILDING.

LOCATE AND TIE-IN TO EXIST. 2" WATER MAIN. PLUG AND ABANDON EXIST. 2"WM TO THE SOUTH.

LOCATE AND TIE-IN TO EXIST. 2" WATER MAIN. PLUG AND ABANDON EXIST. 2"WM TO THE NORTHEAST.

This document is released for the purpose of interim review under the authority of Stanley R. Hayes, P.E. 72141 on 7-7-20. It is not to be used for construction.

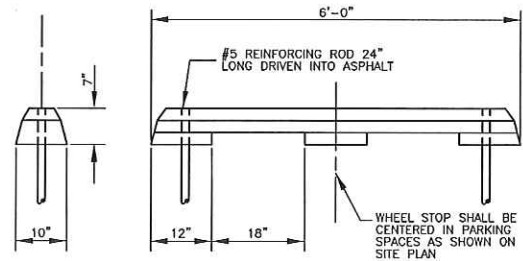
PROPOSED  
UTILITY PLAN

HARLETON I.S.D.  
HIGH SCHOOL SOFTBALL FIELD HOUSE  
AND PARKING AREA PROJECT  
HARRISON COUNTY, TEXAS

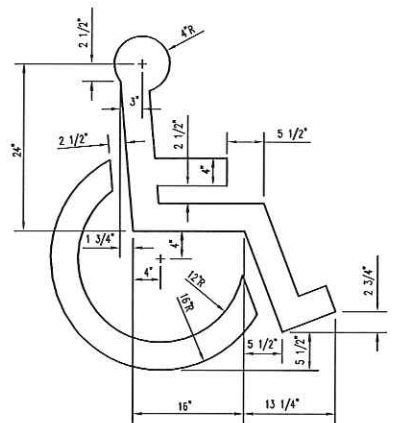
**HAYES ENGINEERING, INC.**  
Texas Registered Engineering Firm F-1465  
2126 Alpine St., Longview, TX, 75601-3401  
Tel.: (903) 758-2010 • Fax: (903) 758-2059



DRAWN BY: R.L.C.  
CHECKED BY: S.R.H.  
DATE: JULY 2020  
SCALE: 1"=20'  
JOB NO.: HISD-20-01

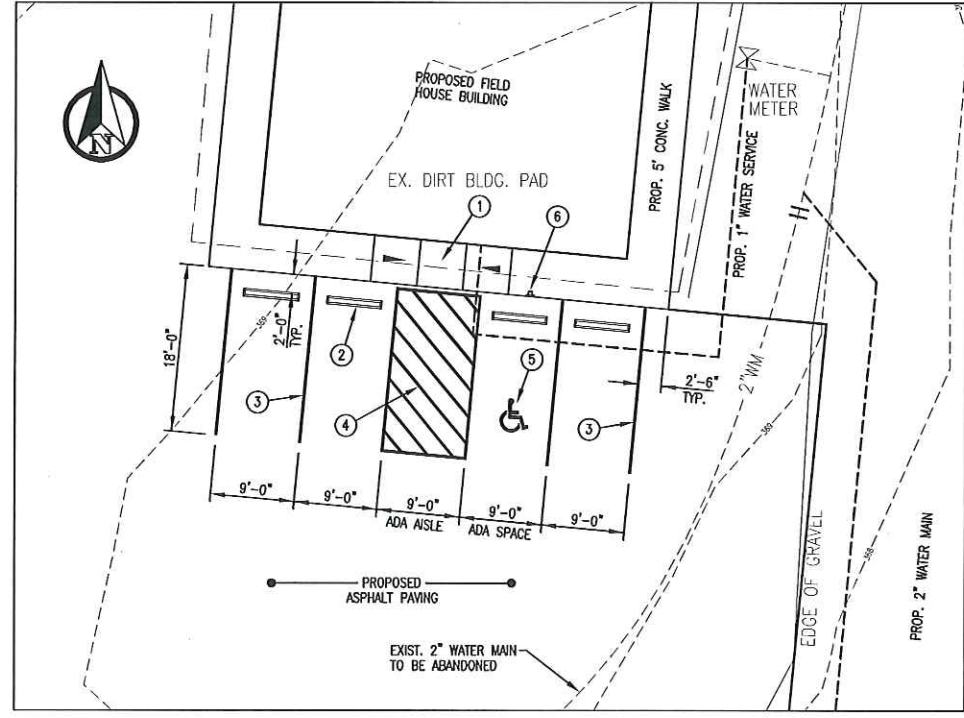


CONCRETE WHEEL STOP DETAIL



ACCESSIBLE SYMBOL PAVEMENT MARKING

SYMBOL: BLUE OR WHITE

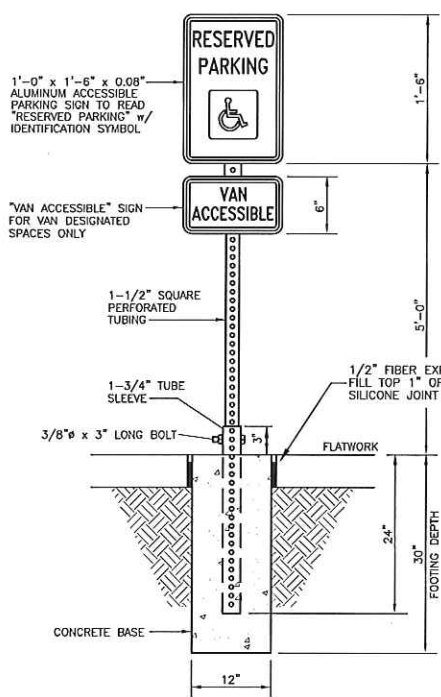


ADA ACCESSIBLE PARKING LAYOUT

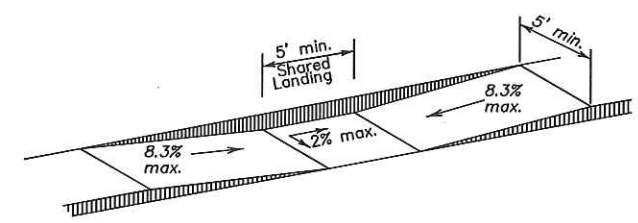
1"=10'

1. CONSTRUCT ADA ACCESSIBLE CONCRETE RAMP
2. INSTALL CONCRETE WHEEL STOP
3. PROVIDE 4" WHITE REFLECTIVE PAINT STRIPING
4. PROVIDE 4" WHITE REFLECTIVE PAINT STRIPING AT 45 DEGREES AND 2'-0" CENTER TO CENTER
5. PROVIDE ACCESSIBLE SYMBOL
6. PROVIDE ACCESSIBLE SIGN

NOTE  
SLOPE SHALL NOT EXCEED 2.00% IN ANY DIRECTION ACROSS ADA AISLE AND ADA PARKING SPACE.

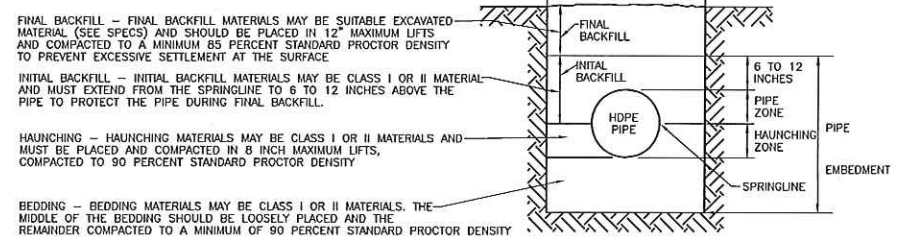


ACCESSIBLE SIGN



ADA ACCESSIBLE CONCRETE RAMP

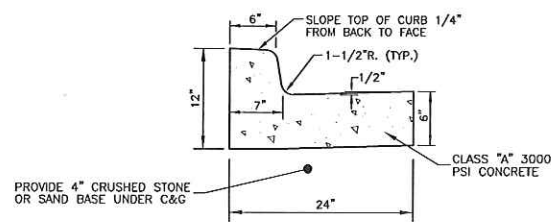
N.T.S.



TRENCH & BEDDING FOR HDPE STORM DRAIN PIPE

N.T.S.

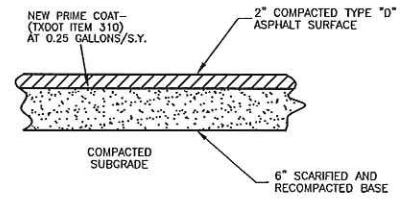
CLASS I - ANGULAR CRUSHED STONE OR ROCK, DENSE OR OPEN GRADED WITH LITTLE OR NO FINES (1/4" INCH TO 1 1/2" IN SIZE). IF CLASS I IS USED, CONTRACTOR SHALL WRAP CLASS I MATERIAL WITH FILTER FABRIC TO PREVENT MIGRATION OF FINES INTO MATERIAL.  
CLASS II - (GW, GP, SW, SP GW-GC, SP-SM) CLEAN, COURSE GRADED GRAINED MATERIALS SUCH AS GRAVEL, COARSE SANDS AND GRAVELLY/SANDY MIXTURES (1 1/2" INCHES MAXIMUM SIZE)



24" CONCRETE CURB & GUTTER

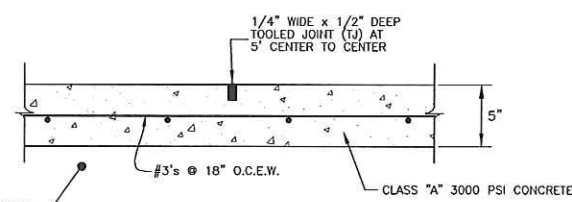
EXPANSION JOINTS TO HAVE TWO #4 SMOOTH DOWELS x 24" LONG GREASE & CAPPED ON ONE END (TO BE PLACED ON 12" CENTERS) WITH 1/2" FIBER EXPANSION MAT'L.

NOTE  
PROVIDE EXPANSION JOINTS AT EDGES OF INLET BOX. PROVIDE TOOLED JOINTS AT 10' MAX.



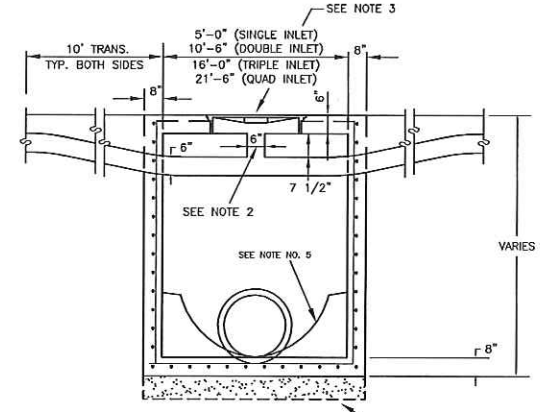
ASPHALT PARKING LOT PAVING

N.T.S.

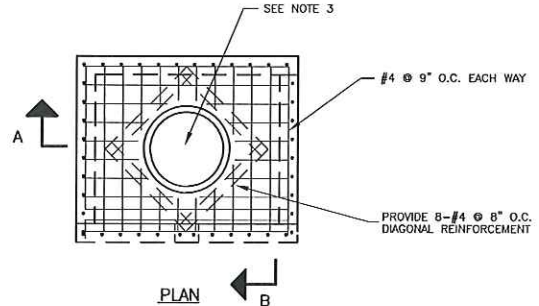


5' WIDE CONCRETE WALK

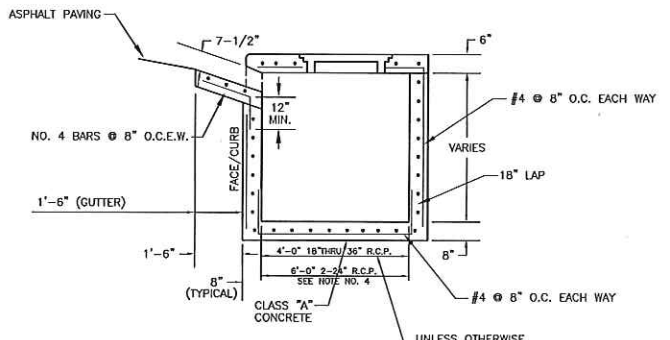
N.T.S.



SECTION "A"



PLAN



SECTION "B"

STANDARD STORM DRAIN INLET

N.T.S.

- NOTES:
1. ALL EXPOSED CONCRETE EDGES TO BE CHAMFERED 3/4".
  2. 6" INLET THROAT SUPPORT IS REQ'D FOR 10', 15', AND 20' INLETS. SUPPORTS SHALL BE SPACED AT 5'-0" C/C. 6" INLET THROAT SUPPORT SHALL BE REINFORCED WITH 2 #4 BARS TIED TO INLET TOP AND WALLS. DEVELOPMENT LENGTH SHALL BE 12" MIN. (SEE DETAIL)
  3. INLET MANHOLE RING AND COVER SHALL BE CENTERED IN TOP OF INLET WIDTH, OFFSET FROM THE INLET THROAT AS REQ'D.
  4. EXTRA WIDTH INLET BOX FOR 2'-24" RCP SHALL BE SUBSIDIARY TO STORM DRAIN INLET CONSTRUCTION.
  5. PROVIDE NON-SHRINK GROUT FLOW CHANNEL BETWEEN ALL PIPES ENTERING AND EXITING INLET BOX. GROUT TO INSIDE TOP OF PIPES.

This document is released for the purpose of interim review under the authority of Stanley R. Hayes, P.E. 72141 on 7-7-20. It is not to be used for construction.

MISCELLANEOUS DETAILS 1

HARLETON I.S.D.  
HIGH SCHOOL SOFTBALL FIELD HOUSE  
AND PARKING AREA PROJECT  
HARRISON COUNTY, TEXAS

HAYES ENGINEERING, INC.  
Texas Registered Engineering Firm F-1465  
2126 Alpha St., Longview, TX 75601-3401  
Tel.: (903) 758-2010 • Fax: (903) 758-2099



STATE OF TEXAS  
STANLEY ROSS HAYES  
72141  
LICENSED PROFESSIONAL ENGINEER

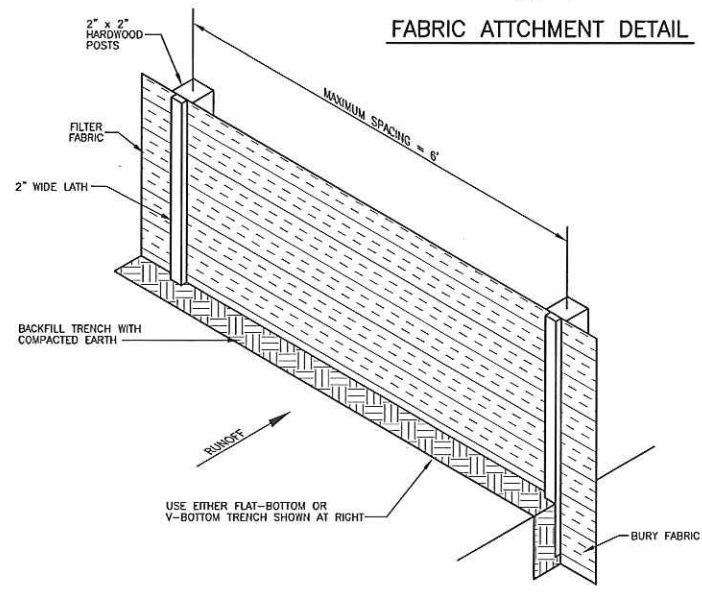
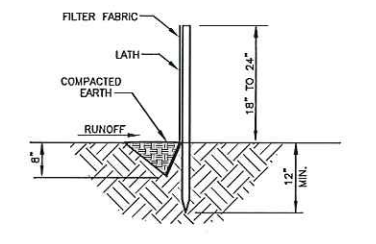
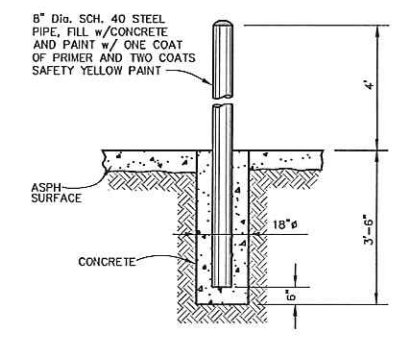
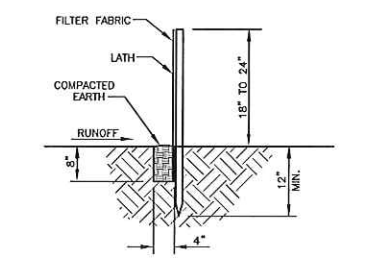
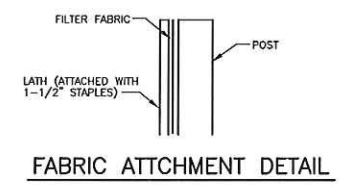
DRAWN BY: R.L.C.  
CHECKED BY: S.R.H.  
DATE: JULY 2020  
SCALE: AS NOTED  
JOB NO.: HISD-20-01

SHEET  
6  
OF 7 SHEETS

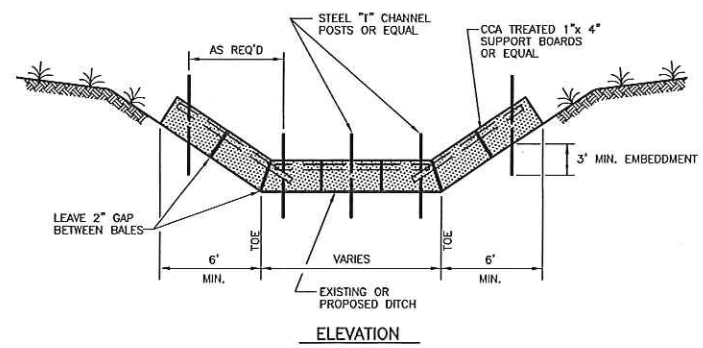
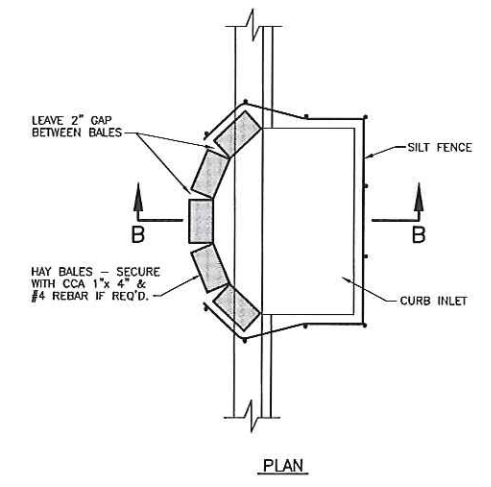
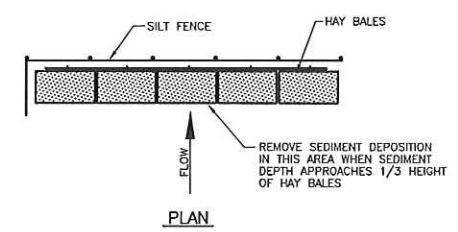
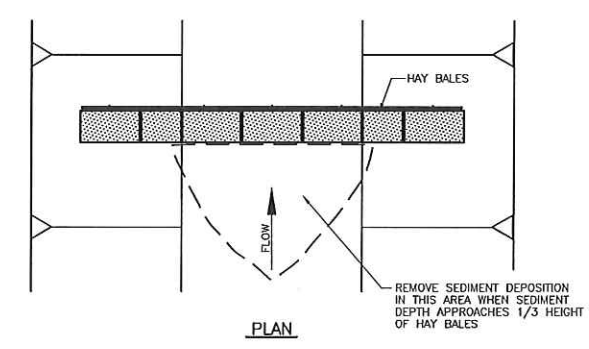


This document is released for the purpose of interim review under the authority of Stanley R. Hayes, P.E. 72141 on 7-7-20. It is not to be used for construction.

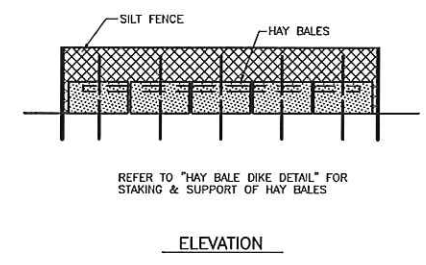
DRAWN BY: R.L.C.  
CHECKED BY: S.R.H.  
DATE: JULY 2020  
SCALE: AS NOTED  
JOB NO.: HISD-20-01



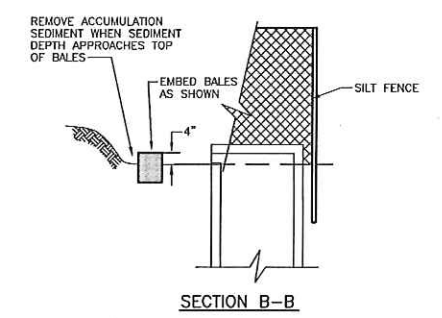
**SILT FENCE DETAILS**  
N.T.S.



**HAY BALE DIKE**



**HAYBALE/SILT FENCE  
SEDIMENT CHECK DAM**



**CURB INLET  
HAYBALE/SILT FENCE SEDIMENT CHECK DAM**