

## **Committee of the Whole**

Tuesday, September 24, 2024 6:00 PM

Board Assembly Room, 1250 West Broadway Avenue, Minneapolis, Minnesota 55411

1) **Call to Order**

2) **Presentations and Discussions**

2)a. School Transformation Process

3) **Adjourn to Special Meeting**



# Committee of the Whole

9/24/2024

# Superintendent Updates

Superintendent Dr. Sayles-Adams

# Agenda

- **Superintendent Updates**
- **School Transformation Resolution**
  - Strategic Plan Connection
  - Transformation Project Plan Updates
    - Physical Space Study
    - Engagement
    - Finances
    - Spanish Dual Language Task Force
  - Timeline and Next Steps
- **Questions**

# School Transformation Resolution of Dec. 2023

# 4 Key Areas of Focus



## Physical space study

This includes factors like utilization, accessibility, essential spaces and enrollment capacity.



## Community engagement

Identifying different engagement opportunities throughout the entire process for stakeholders.



## Priority-based budgeting

Transparently identifying efficiencies by categorizing spending and ensuring funds are prioritized in alignment with the strategic plan.

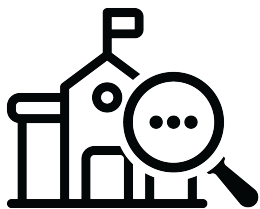


## Spanish dual language task force

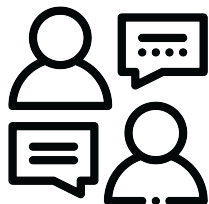
Review and make recommendations about the purpose and goals for Spanish dual language programming and funding sources across MPS.

# Strategic Plan Connection

## Physical Space Study



## Community Engagement



## Priority-Based Budgeting



## Spanish Dual-Language Taskforce



**Goal 1** Academic Achievement



**Goal 2** Student Well-being



**Goal 3** Effective Staff



**Goal 4** Building and School Climate



# Project Charter Overview

Each project lead was asked to complete a project charter that includes the following:

- Background & Purpose
- Objectives
- Strategic Plan Alignment
- Scope & Deliverables (what?)
- Timeline (by when?)
- Team, Project Contributors, and Engaged Audiences (with whom?)
- Budget/Resources (needing what?)
- Assumptions, Constraints, and Risks (considering what?)

The following slides are a high level overview of each project's charter

# Physical Space Study – Project Plan



## Objectives:

- Create quantitative and qualitative data that fosters an understanding of how the physical environment aligns with District programming and needs.

## Deliverables:

- Annotated Floor Plans by Principals
- Use & Utilization Report (+ other data)
- On-site walkthroughs
- Dashboard(s) and Reports

| What?                                | By when?   | With whom?  | Considering what?  | Needing what?                            |
|--------------------------------------|------------|---|--|--|
| Building Walkthroughs                | 10/29/2024 | School board, school and district leadership, MFT representatives   | Stakeholder availability<br>Intentionality around what data is being collected and how it will be used | Staff time, potential consultant support |
| Use & Utilization Report             | 11/15/2024 | Principals, Master schedulers<br>Multilingual and Special Education departments, as well as other departments | Consistent approach in how program needs translate into physical space requirements                    |  |
| Facility Data Dashboard(s) & Reports | 11/15/2024 | Public  | Focus on “essential indicators” – the data points that foster understanding at a district-wide scale   |  |

# Community Engagement – Project Plan



## Objectives:

- Participation rates representative of key stakeholder group
- ≥ 6 total engagement opportunities
- multiple two-way engagement opportunities

## Deliverables:

- Communication plan
- Community access points
- Review of previous stakeholder feedback

| What?   | By when?   | With whom?                   | Considering what?   | Needing what?                                       |
|---|------------|------------------------------|---|---|
| Communication Plan  | 09/06/24 ✓ | All MPS stakeholders         | <b>Assumption:</b><br>Previous feedback will be relevant.<br><br><b>Constraints:</b><br>capacity and budget<br><br><b>Risks:</b><br>Certain groups may be underrepresented or may not use our channels for communication. | Staff hours   |
| Identify community access points                            | 09/09/24 ✓ | All MPS stakeholders         |   | Staff hours, catering, transportation, interpreters |
| Review previous feedback                                    | 11/01/24   | MPS Engagement Dept. and REA |   | Staff hours   |
| Share summary feedback + rank/prioritize programs/services. | 2/17/25    | MPS Caregivers               |   | Staff hours, catering, transportation, interpreters |

# Priority-Based Budgeting – Project Plan



## Objectives:

- Balanced 2025-26 budget
- Priority-based budgeting
- Community and stakeholder involvement

## Deliverables:

- Revenue determination
- 2025-25 budget pro-forma
- School and department budgets

| What?                     | By when?   | With whom?   | Considering what? | Needing what?   |
|---------------------------|------------|--|-------------------|---|
| Pro-Forma Budget Document | 10/01/24   | <ul style="list-style-type: none"> <li>• Superintendent</li> <li>• Senior Leadership Team</li> <li>• Board</li> <li>• Staff</li> <li>• Public</li> </ul> | On time Audit     | Staff Time<br><br>Enterprise Resource Planning System (SAP) |
| Budget Timeline           | 12/31/2024 |  | Severe Weather    |   |
| Budget gap identification | 12/31/2024 |  | On time Audit     |   |

# Spanish Dual Language Task Force – Project Plan



## Objectives:

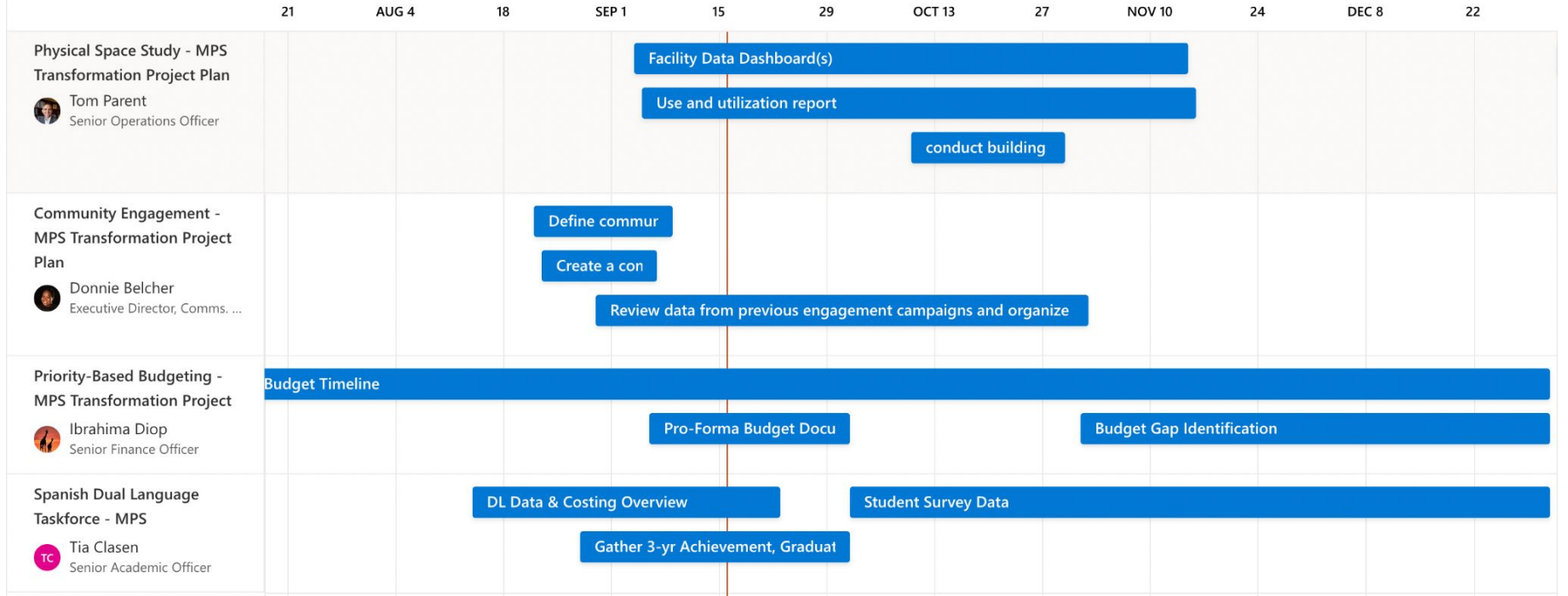
- Reviewing purposes and goals of Spanish Dual Language
- Creation of best practices report on programming
- Gathering and analyzing 3-yr data
- Identification of possible task force members

## Deliverables:

- Leadership team
- Task force structure
- Research project plan
- Final recommendations

| What?  | By when?    | With whom?                              | Considering what?  | Needing what? |
|--|-------------|---|--|---------------|
| Communication to schools                                 | 9/16/2024 ✓ | Associate Superintendents<br>Principals | These will be identified in collaboration with the task force once the meetings begin. |               |
| Spanish DL Purpose and Costing Overview                  | 9/23/2024   | Spanish DL Task Force Leadership Team   |  |               |
| Gather 3-yr Achievement, graduation, and enrollment data | 10/1/2024   |   |  |               |
| Gather existing student survey data                      | 10/1/2024   |   |  |               |

# Draft Timeline



# Questions?