

Agenda

1. Call to Order and Roll Check

Presenter: Board Chair Rebecca Dyson

2. Land Acknowledgment

Presenter: Board Chair Rebecca Dyson

3. Adoption of Agenda *(At this time Board members are provided the opportunity to amend the Regular Session agenda.)*

Presenter: Board Chair Rebecca Dyson

4. Consent Agenda *(All items may be adopted by a single motion unless pulled for special consideration.)*

Presenter: Board Chair Rebecca Dyson

- A. Approval of Minutes 4**
- B. Personnel Report for September 2025 12**
- C. Enrollment Report as of September 3, 2025 17**
- D. Finance Report**
 - 1) Finance Report for the period ending August 31, 2025 18**

5. Bond Report

- A. Monthly Bond Report 5 min. 26**

**Presenter: Executive Director of Operations, Steve Mitzel & HMK Project
Director, Josh Whitaker**

6. AHS Alumni Association 10 min.

Presenter: AHS Alumni Association President, Carol Jensen

7. Ashland Schools Foundation 10 min.

65

Presenter: ASF Executive Director Erica Thompson

8. Recurring Reports

A. OSEA Report 5 min.

Presenter: OSEA Representative James Johnson

B. AEA Report 5 min.

Presenter: AEA Representative Alan Parowski

C. Student Board Representative Report 5 min.

Presenter: Student Board Representatives Alice Carnahan & Milo Leiserson

9. Board Reports 10 min.

Presenter: Board Chair Rebecca Dyson

10. Hear Public Comments (*The Ashland School District Board of Directors reserves this time for individuals to relay comments in writing to the Board regarding topics, not on the printed agenda.*)

Presenter: Board Chair Rebecca Dyson

11. Superintendent Report 10 min.

Presenter: Superintendent Joseph Hattrick

12. Unfinished Business

A. Integrated Guidance 2024-25 Quarter 3 & 4 Report 15 min.

72

Presenter: Ericka Beck-Brattin

B. Cell Phone Policy Update 5 min.

86

Presenter: Superintendent Joseph Hattrick

C. AI Policy Update 5 min. 88

Presenter: Superintendent Joseph Hattrick

13. New Business

A. Report: Division 22 Assurances on Compliance with Public School 91

Standards: 2024-25

Presenter: Superintendent Joseph Hattrick

B. ACTION: Social Sciences Curriculum Adoption Postponement 111

Presenter: Superintendent Joseph Hattrick

C. ACTION: Initiate Science & Health Curriculum Adoption Process 112

Presenter: Assistant Superintendent Michelle Cuddeback

14. Announcements and Appointments

Presenter: Board Chair Rebecca Dyson

A. The next Regular Session meeting will be held on Thursday, October 9, 2025, beginning at 6:30 p.m. in the City Council Chamber, 1175 E. Main St., Ashland.

B. The board will hold a work session on Thursday, October 23, at 6:30 p.m. on Zoom.

15. Adjourn

Minutes

1. Call to Order and Roll Check

Chair Dyson called the meeting to order. Roll check confirmed that the following members were present: Vice Chair Hatch, Director Rooklyn, Chair Dyson, Director Ferguson, and Director Ruby. Chair Dyson reminded everyone that the meeting was being recorded.

2. Land Acknowledgment

Student representative, Alice Carnahan, read the Land Acknowledgment aloud.

3. Adoption of Agenda *(At this time Board members are provided the opportunity to amend the Regular Session agenda.)*

- ❖ **Motion:** Director Ruby moved, and Vice Chair Hatch seconded adoption of the agenda as presented.
Aye: Rooklyn, Ruby, Ferguson, Dyson, Hatch
Nay: none
Result: The motion carried by unanimous vote of the five members.

4. Consent Agenda *(All items may be adopted by a single motion unless pulled for special consideration.)*

- ❖ **Motion:** Director Rooklyn moved, and Director Ferguson seconded approval of the consent agenda items as presented.
Aye: Rooklyn, Ruby, Ferguson, Dyson, Hatch
Nay: none
Result: The motion carried by unanimous vote of the five members.

- 4.A. Approval of Minutes
- 4.B. Personnel Report for August 2025
- 4.C. Board Meeting Schedule 2025-26
- 4.D. Superintendent Evaluation Process
- 4.E. Board-Superintendent Operating Agreements 2025-26
- 4.F. Policy Review Process
- 4.G. YMCA MOUs

5. Bond Report

5.A. ASD Bond Report July 2025

Executive Director of Operations, Steve Mitzel and HMK Project Director, Josh Whitaker, provided updates on the high school construction projects, mentioning the completion of the chiller and gear installation in the high school gym. Most of the seismic retrofit construction is now complete. Interior spaces are being turned over to teachers, and the removal of fences around the quad and science building is allowing staff and students to access the campus. Still to come are the installation of shade sails on the quad, the kiosk, and parking lot stripes.

6. ASD Housing Project Update

Matt Edlen from Eden and Company provided an update on the ASD housing project, focusing on the diligence phase and the exclusive negotiation agreement (ENA) with the district. The project aims to

deliver critically needed affordable housing, focusing on serving low- to middle-income families and teachers by offering a diverse mix of housing units and types that accommodate a wide range of residents, from singles to families.

During an early design phase, the development team held a series of public meetings with key community stakeholders (teachers/staff, civic leaders, etc.) and targeted resident groups, guiding the design direction. Alongside this early design process, the project secured nearly \$1 million in non-dilutive grant funding. Mr. Edlen reported that the project has received strong support from the city of Ashland.

The next steps are for Eden and Company to finalize their initial site diligence and report back to the district on their findings. Additional meetings will be scheduled to review the project scope and consider the necessary steps for potential Development and Disposition Agreement negotiations.

7. 2025-26 District Updates

Presenting via Zoom, Assistant Superintendent Michelle Cuddeback updated the board on program changes for the upcoming school year.

Elementary Schools

- Increase in the number of multigrade classrooms, including grade blends K/1, 2/3, and 4/5
- Subject Specialization Model / Homeroom-Based Model

AMS

- Two larger 7/8 teams, staffed with dedicated teachers in ELA, Math, Science, Social Studies, and Spanish
- One smaller team serving a focus group of students, providing integrated instruction along with academic support
- Reduced number of Encore class periods and elective classes

AHS

- Staffing reductions led to fewer class offerings, but the district is exploring new CTE opportunities and expanding offerings based on student interest

Professional development will be a priority, focusing on: Professional Learning Communities (PLCs), Science of Reading, and Equitable Mindsets, Systems, and Practices.

Ms. Cuddeback reminded parents that registration is mandatory, even for returning students. Please register your student if you haven't already done so.

8. Pacific Rim Bowl

Executive Director of Operations, Steve Mitzel, shared details and photos from the Pacific Rim Bowl, highlighting the cultural exchange and positive impact on the community. The event included a welcome barbecue, a peace ceremony, taiko drums, the Kitchell games, and the big Friday night game, with strong community participation. The longstanding tradition requires a tremendous effort to organize, but the connections and lasting memories made by the kids are priceless.

9. Recurring Reports: OSEA and AEA Reports will resume in September

10. Board Reports

Director Ruby enjoyed engaging and learning at the OSBA Summer Board Conference.

Director Ferguson has been studying board governance, reviewing policies, visiting sites with principals, discussing the budget with Director Ely, participating in the board retreat, and attending the OSBA Summer Conference. She is currently reading a book from the high school curriculum and is looking forward to the kick-off breakfast next week.

Director Rooklyn gained valuable insights at the OSBA Summer Conference and is collecting information for the upcoming YAAL initiative.

Vice Chair Hatch enjoyed the board retreat and working on strategies for collaboration as a board. He is excited about the community listening sessions the board plans to host this year. Mr. Hatch attended a meeting with Senator Merkley's staff and was relieved to learn that federal funds had been released.

After spending two full days at the board retreat, Chair Dyson took a well-needed break and thoroughly enjoyed everything Ashland has to offer, including attending performances, running, and spending time on the coast. She is now ready to get back to school.

11. Hear Public Comments (*The Ashland School District Board of Directors reserves this time for individuals to relay comments in writing to the Board regarding topics, not on the printed agenda.*)
None

12. Student Board Representative Report

Student Board Representatives Alice Carnahan & Milo Leiserson shared the following summer highlights:

- Although the Pacific Rim Bowl resulted in a bad loss for Ashland, the atmosphere was electric, and the stands were more packed than ever
- The Fresh Start counselor retreat took place at Willow Wind, and two of the three Fresh Start sessions are now complete. They observed a lot of positive growth in the freshmen from the time they arrived until they left camp, and it was described as “magical.”
- The first day of school is on August 25th. Freshmen will meet with their Fresh Start counselors when they arrive on campus.
- The leadership team toured the quad and the seismic retrofit. The quad looks much better now with native plants and the grassy area. They are excited about the shade sails and kiosk. The quad was described as welcoming and a place where people feel they belong.

13. Superintendent Report

Superintendent Hattrick announced that the girls' high school soccer team will be traveling out of state today through Saturday.

Dr. Hattrick expressed deep gratitude to all the coaches, players, Phoenix-Talent School District, Steve & Michelle Mitzel, the rest of the PRB board, and everyone who supported the Pacific Rim Bowl events throughout the week. The engagement was impressive.

Superintendent Hattrick also provided the following updates:

- On August 2nd, Dr. Hattrick participated in Grizz Fest, the AHS Alumni event
- He reported on the successful teamwork at the two-day School Board Retreat
- The District Equity (DEC) requirements have been changed; the DEC is now a Superintendent Advisory Committee rather than a Board Committee. Superintendent Hattrick will create a DEC in the coming weeks and provide periodic updates to the board
- A recent meeting with Senator Merkley's Health & Education Advisor, Becca Damante, and Field Representative, Dahna Black, was collaborative and informative
- The two-day Lead Team retreat focused on collaborative learning, goal setting, and Professional Learning Communities (PLCs)
- Staff return on Monday, August 18th, for one week of professional development before school begins on August 25th
- The 2025-26 District Priorities are:
 - Instructional Excellence- Every student deserves strong teaching and learning.
 - Health Community- we are one, and together we build belonging and unity
 - Growth and Sustainability- through our resilience, we can continue to increase options for our students and ensure sustainability for the future.

14. Finance Report

14.A. Finance Report for the period ending July 31, 2025

Interim Director of Business Services Sherry Ely reported on the first month of the new fiscal year. After one month of revenue recorded, most of the revenue projections are in line with the budget. She noted that the SOESD flow-through will be higher than projected because our Student Services Department has found ways to provide previously purchased services in-house. Additionally, the June SSF estimate is approximately \$525,000 higher than the March estimate due, for the most part, to a decrease in student enrollment statewide. She has adjusted the projections to reflect an increase in flow-through dollars and SSF revenues.

The projected expenditures are preliminary; it won't be until after September payroll that Director Ely will be better able to project encumbrances for the year. She does not expect that we will need to draw more than \$5.2 million from the \$10 million loan. As a reminder, the district will draw a long-term full faith and credit loan to repay the short-term tax anticipated note (TAN) by the end of December. At this early stage in the year, Director Ely estimates our ending fund balance to be \$2,768,489, which is 6.31% of the projected expenditures. After the audit (week of Oct. 13) is complete, she will be able to report the 2024-25 ending fund balance.

15. New Business

15.A. ACTION ITEM: 2025-26 District/Board Goals

Superintendent Joseph Hattrick presented the aligned 2025-26 Goals for the District, Board, and Superintendent. All goals aim to support the Integrated Guidance Plan, which was approved in the 2024-25 school year through surveys, listening sessions, and collaborative efforts. All the goals focus on student achievement, safe environments, and financial growth. The goals are intentionally specific, allowing staff to focus without feeling overwhelmed by overly ambitious objectives. Loose and tight expectations refer to how expectations are communicated to the leadership team, who then create the framework for accountability. The board intends to use the presented goals as the District's Strategic Plan for the 2025-26 school year and possibly beyond.

- ❖ **Motion:** Director Rooklyn moved, and Director Hatch seconded adoption of the 2025-26 District/Board Goals as presented.
- Aye:** Rooklyn, Ruby, Ferguson, Dyson, Hatch
- Nay:** none
- Result:** The motion carried by unanimous vote of the five members.

16. Announcements and Appointments

Chair Dyson read the following announcements:

- 16.A. Board Member Appointments: Vice Chair Hatch will serve as the board's legislative representative, Director Ruby will serve as the board representative to the Ashland Schools Foundation, and Director Rooklyn and Vice Chair Hatch will serve on the Superintendent Advisory Policy Workgroup.
- 16.B. The Board will meet for a work session on Thursday, August 28 at 6:30 PM via Zoom.
- 16.C. The board will hold its next Regular Session on Thursday, September 11, at 6:30 PM in the City Council Chamber, 1175 E. Main Street, Ashland, OR.

17. Adjourn

There being no further discussion, Chair Dyson adjourned the meeting at 8:05 PM.

Submitted by:
Holly Rosser, Board Secretary

Date for Board Approval: September 11, 2025

Emergency School Board Meeting
Thursday, August 21, 2025, 6:00 PM
District Office Conference Room
885 Siskiyou Blvd. Ashland, OR 97520

Minutes

1. Call to Order and Roll Check

Chair Dyson called the meeting to order. Roll check confirmed that Directors Rooklyn, Ferguson, and Dyson were present in person, Director Ruby attended via Zoom, and Vice Chair Hatch joined in person 15 minutes later.

Statement for Emergency Board Meeting:

An emergency meeting of the Board of Education has been called to address the urgent condition of Lincoln School. This matter requires immediate discussion and action to ensure the safety and well-being of students, staff, and the community.

2. Lincoln School

The Ashland School Board convened an emergency meeting to address the urgent condition of Lincoln School. During a routine fire inspection earlier that day, structural issues were found, prompting the immediate evacuation of the building. Fire Marshal Mark Shay, Architect Chris Brown, along with a structural engineer, identified a significant deformation in a wall, posing a risk of catastrophic failure.

The school will remain closed, impacting approximately 70 students and 15 staff members. Plans are being made to relocate affected programs and staff. Students and parents affected by the closure will be contacted personally.

The district will develop a plan to allow a limited number of staff to enter the building and safely retrieve essential teaching materials.

The district will continue working closely with the insurance company to determine coverage and next steps. Superintendent Hattrick is working with local agencies to discuss mitigation strategies and find temporary spaces for the displaced programs.

In the coming weeks and months, the board will discuss short-, mid-, and long-term plans for Lincoln School.

Thanks were expressed for the quick safety response and for keeping the community informed about the situation.

2. Adjourn

There being no further discussion, Chair Dyson adjourned the meeting at 6:28 PM.

Submitted by:
Holly Rosser, Board Secretary

Date for Board Approval: September 11, 2025

Minutes

1. Call to Order / Roll Check

Chair Dyson called the meeting to order. Roll check confirmed that the following members were present: Director Rooklyn, Chair Dyson, Director Ferguson, Director Ruby, and Vice Chair Hatch attended via Zoom. Chair Dyson reminded everyone that the meeting was being recorded.

2. Adoption or Adjustment of Agenda

Chair Dyson requested to add OSBA Legislative Policy Committee under item #3.

- ❖ **Motion:** Director Rooklyn moved, and Director Ferguson seconded adoption of the agenda as amended.
Aye: Rooklyn, Ruby, Ferguson, Dyson
Nay: none
Result: The motion carried by unanimous vote of the five members.

3. Board Member Check-in

Board members shared items of interest.

Director Rooklyn is keeping track of the timeline for filing the Youth Academic and Activities Levy for the next election cycle.

Director Ruby reported that the LGBTQIA2S+ Advisory Committee he serves on will remain advisory and will not go through the process of becoming a caucus. There are funds available for OSBA to continue supporting this advisory committee.

Director Ferguson expressed gratitude for the remodeled high school courtyard and for Steve Mitzel and everyone who helped make that happen. The quad fosters a sense of belonging.

3.A. OSBA Legislative Policy Committee

Chair Dyson announced an open seat on the Southern Oregon region's OSBA Legislative Policy Committee.

- ❖ **Motion:** Director Ferguson moved that the Ashland School Board nominate Dan Ruby for the OSBA Legislative Policy Committee position #5. Director Rooklyn seconded the motion.
Aye: Rooklyn, Ruby, Ferguson, Dyson, Hatch
Nay: none
Result: The motion carried by unanimous vote of the five members.

Ms. Rosser will file the materials with OSBA.

4. Lincoln School Review

Superintendent Hattrick reviewed the events since the Fire Marshal identified structural damage at Lincoln School, leading to the building's closure, and shared the district's relocation plan for the staff and programs previously located at Lincoln School.

Teachers and administrators stepped up to assist the relocation process by freeing up spaces and providing support during the move.

- Catalyst and Thoreau have been relocated to AHS ENG 1 & 2.
- Level 2 (specialized programs) has been relocated to AHS and AMS.
- Student Services staff have relocated to the IT building.

Executive Director of Operations, Steve Mitzel, and Superintendent Hattrick served as the Safety Coordinators during the relocation process. They used an entry and exit log and outlined specific moving times for staff to gather their belongings while monitoring for any changes to the building that could require immediate evacuation.

Superintendent Hattrick reminded the board that we are still in an information-gathering phase and have minimal new updates. There remains no access to Lincoln School without approval from the Superintendent or Executive Director of Operations.

Next steps include:

1. Temporary shoring for safety
2. Investigation
3. Summary of findings and reports
4. Insurance evaluation and coverage determination

This process could take a month or longer. Until we learn more about the full extent of the damage, cause, and scope of the incident, we cannot engage in problem-solving because we do not yet know which direction this might take.

Superintendent Hattrick clarified the following:

1. Although only one wing was impacted, since we don't understand the cause, it's unclear how the other parts of the building could be affected, so the entire building was shut down.
2. The damage was discovered during the annual fire inspections. These inspections are conducted every year before students arrive to ensure our facilities are ready for operation. There was no indication that this would be an issue prior to the inspection.

5. Division 22 Assurances Overview

Superintendent Hattrick provided a detailed overview of the Division 22 Standards for Public Education and the yearly review process.

The Division 22 standards are the standards that the Oregon legislature or the State Board has determined must be met in order to be a standard school district. Compliance with these rules ensures a baseline level of service across the state.

Standards are divided into these five categories:

1. High-quality learning experiences
2. Aligned & focused educational systems
3. Engaged partners & communities
4. Safe & inclusive schools
5. Committed & supported staff

Districts must report to their local school board by Nov. 1 and make a report available on the district website by Nov. 1. Districts must submit assurances to ODE by Nov. 15. ODE reviews all submissions and follows up with districts that have self-reported as being out of compliance.

ASD reviews each standard annually to verify compliance. We cross-reference the rule or requirement with our policies and procedures to ensure we meet the requirements for the reporting year.

The school board is not required to accept or approve the district's assurances, but the board must receive the district's oral presentation at an open public meeting, allowing for public comment.

The Division 22 Assurances report will be presented in September or October.

6. Board Procedural Items

During a discussion about the process for convening an executive session, the board agreed to hold planned executive sessions at the end of regular board meetings. These sessions would be included on the regular meeting's agenda. When that agenda item is reached, the board chair would motion to go into executive session, and the public would be dismissed. After the executive session, the regular meeting would reconvene for official adjournment. If an executive session needs to be scheduled outside the dates of the regular board meetings, the board would post that meeting separately.

The board reviewed aspects of public meeting law and explored strategies for reframing challenging public conversations.

Whenever possible, the board will receive presentations before meetings, but this isn't always feasible. Board members can always table an item they need more time to review, or email Superintendent Hattrick if they want more information about a presented topic after the meeting.

The board has expressed interest in having community partners deliver more presentations during work sessions, allowing them to better understand the partnerships.

7. Other Items for Board Consideration

The board celebrated all the teachers and administrators for successfully launching the new school year.

8. Adjourn

There being no further discussion, Chair Dyson adjourned the meeting at 7:50 PM.

Submitted by:
Holly Rosser, Board Secretary

Date for Board Approval: September 11, 2025

Ashland School District
 Board Personnel Report
 September 1, 2025

SITE	NAME	POSITION	STATUS	STATUS CHANGE	SALARY PLACEMENT EXCEPTION
AHS	Rebecca Laroi	Fresh Start Teacher	Temporary Service	NO	NONE
AHS	Rebecca Laroi	Affinity Group Advisor- BSU	Temporary Service	NO	NONE
AHS	Brecon Cutler	Student Tutor	Temporary Service	NO	NONE
AHS	Ezra Chandler	Student Tutor	Temporary Service	NO	NONE
AHS	Tobias Pew	Student Tutor	Temporary Service	NO	NONE
AHS	Olive Christopherson	Student Tutor	Temporary Service	NO	NONE
AHS	Kai Hendrix	Student Tutor	Temporary Service	NO	NONE
AHS	Hazel Hering	Student Tutor	Temporary Service	NO	NONE
AHS	Cameron Kukuk	Student Tutor	Temporary Service	NO	NONE
AHS	Sayjune Park	Student Tutor	Temporary Service	NO	NONE
AHS	Zohara Rothenberg	Student Tutor	Temporary Service	NO	NONE
AHS	Anya Salturen	Student Tutor	Temporary Service	NO	NONE
AHS	Claudia Stadtmueller	Student Tutor	Temporary Service	NO	NONE

Ashland School District
 Board Personnel Report
 September 1, 2025

AHS	Genevieve Pereira	Student Tutor	Temporary Service	NO	NONE
AHS	Elena Alexander	Student Tutor	Temporary Service	NO	NONE
AHS	Cassey Finney	Student Tutor	Temporary Service	NO	NONE
AHS	Milo Leiserson	Student Tutor	Temporary Service	NO	NONE
AHS	David Brabec	EA	0.75 FTE	NO	NONE
AHS	Gary Blackmon	Game Help	Temporary Service	NO	NONE
AHS	Teyah Bair	Game Help	Temporary Service	NO	NONE
AHS	Allison Gida	Game Help	Temporary Service	NO	NONE
AHS	Bruno Weston	Game Help	Temporary Service	NO	NONE
AHS	Scott Hunter	Game Help	Temporary Service	NO	NONE
AHS	Rebecca Sullivan	Game Help	Temporary Service	NO	NONE
AHS	Jude Whalen	Game Help	Temporary Service	NO	NONE
AHS	Rebecca McGregor	Game Help	Temporary Service	NO	NONE
AHS	Paul Huard	New Hire Peer Mentor	Temporary Service	NO	NONE

Ashland School District
 Board Personnel Report
 September 1, 2025

AHS	Jenifer Franczak	Head Debate Coach	Temporary Service	NO	NONE
AHS	Alec Slinkard	Assistant Athletic Director Fall	Temporary Service	NO	NONE
AHS	Jose Soriano	Academic Advisor Fall	Temporary Service	NO	NONE
AHS	McKael Kenfield	ASU Affinity Group Advisor	Temporary Service	NO	NONE
AHS	Daren Shaw	Teacher	0.50 FTE (Temporary)	NO	NONE
AHS	Laura Tagg	School Counselor	1.0 FTE (Temporary)	NO	NONE
AHS	Kelly Anderson	Teacher	0.17 FTE (Temporary)	NO	NONE
AHS	Mark Miller	CTE Coordinator	Temporary Service	NO	NONE
AHS	Julie Bleicker	TAG Coordinator	Temporary Service	NO	NONE
AHS	Tamra Anderson	Math Bowl	Temporary Service	NO	NONE
AHS	Amy Merwin	Munchkin Choral Lead- AHS Theater	Temporary Service	NO	NONE
AHS	David Janowski	EA Site Based	0.875 FTE	NO	NONE
Student Services	Katherine Chew	Counseling/CDS Intern	Temporary Service	NO	NONE
Student Services	Jacey Ashley	Counseling/CDS Intern	Temporary Service	NO	NONE

Ashland School District
Board Personnel Report
September 1, 2025

Student Services	Catherine Gould	Counseling/CDS Intern	Temporary Service	NO	NONE
Student Services	Andrew Augustadt	Youth Advocate- Attendance	1.0 FTE	NO	NONE
Student Services	Amy Maukonen	Teacher, SPED	0.30 (Temporary)	NO	NONE
Maintenance	Lily Hix-Sortor	Custodian	1.0 FTE	NO	NONE
Helman	Kerri Ann Mallory	Office Manager Mentor	Temporary Service	NO	NONE
Helman	Michelle Hill	EA Site Based	Resignation	NO	NONE
Helman	Aneiage Van Bean	EA	decreased to .125 FTE	NO	NONE
Helman	Aneiage Van Bean	EA Media Assistant	increased to .75 FTE	NO	NONE
Helman	Spencer Nix	EA Site Based	increased to 0.875 FTE	NO	NONE
Helman	Erin Finney	New Hire Peer Mentor	Temporary Service	NO	NONE
Helman	Tanner Marks	New Hire Peer Mentor	Temporary Service	NO	NONE
Food Service	Sergio Rosales	Food Service Worker	Increased to .6875 FTE	NO	NONE
TRAILS	Benjamin Carder	EA SPED I	0.4375 FTE	NO	NONE
TRAILS	Laurie Green	New Hire Peer Mentor	Temporary Service	NO	NONE
TRAILS	Rocio Ramos Rojas	EA	Resignation	NO	NONE
TRAILS	Christopher Casaus	EA	0.4690 FTE	NO	NONE
AMS	Rosie Converse	Volleyball Coach	Temporary Service	NO	NONE
AMS	Ashley Ambrosio	Volleyball Coach	Temporary Service	NO	NONE

Ashland School District
 Board Personnel Report
 September 1, 2025

AMS	Jarrett Davidson	Assistant Coach, Cross Country	Temporary Service	NO	NONE
AMS	Tara Elder-Hammond	Volleyball Coach	Temporary Service	NO	NONE
AMS	Ashley Ambrosio	New Hire Peer Mentor	Temporary Service	NO	NONE
AMS	Jennifer Gonzales	New Hire Peer Mentor (0.50)	Temporary Service	NO	NONE
AMS	Juan Apaez	EA	0.6875 FTE	NO	NONE
AMS	Jarrett Davidson	QSA Affinity Group Advisor	Temporary Service	NO	NONE
AMS	Sessceal Reynolds	BSU Affinitu Group Advisor	Temporary Service	NO	NONE
AMS	Jennifer Gonzalez	LSU Affinity Group Advisor	Temporary Service	NO	NONE
Willow Wind	Erin Roginski	Part Time Instructor	Temporary Service	NO	NONE
Willow Wind	Quinn Courtright	EA	Decreased to 0.75 FTE	NO	NONE
Willow Wind	Erika Lowe	EA	Decreased to 0.75 FTE	NO	NONE
Willow Wind	Alexi McCullough	EA	0.4375 FTE	NO	NONE
Willow Wind	Anita Phillips	EA	0.75 FTE (Temporary)	NO	NONE
Walker	James Hagemann	New Hire Peer Mentor (0.50)	Temporary Service	NO	NONE
Transporation	Charity May Armas-Siles	Bus Driver- Special Needs	0.75 FTE	NO	NONE
Transporation	Charity May Armas-Siles	Bus Driver	Resignation	NO	NONE
Transporation	Benjamin Carder	Bus Driver	Increased to 0.5625 FTE	NO	NONE
Transporation	Holly Bergquist	Bus Driver	0.625 FTE	NO	NONE
Transporation	Kim Euell	Bus Driver	0.625 FTE	NO	NONE

ASHLAND PUBLIC SCHOOLS ENROLLMENT SUMMARY

September 2025 Full-Time Enrollment Counts by Site and Grade

SITE	K	1	2	3	4	5	6	7	8	9	10	11	12	
BELLVIEW	35	49	35	39	47	39								244
HELMAN	39	31	42	41	43	57								253
WALKER	28	32	40	43	37	46								226
TRAILS	11	13	13	9	15	15	17	17	13					123
*Ashland CONNECT	0	0	1	0	3	1	1	1	3					10
AMS							137	178	167					482
AHS										248	217	199	231	895
WILLOW WIND	19	22	23	22	25	25	24	24	25					209
Level 2 Program	0	0	0	0	0	1	0	1	1	0	1	0	0	4
ASD TOTALS	132	147	154	154	170	184	179	221	209	248	218	199	231	2446

	Full-Time Enrollment History													
	2011	2012	2015	2016	2017	2018	2019	2020	2021	2022	2023	2024	2025	2026
BELLVIEW			315	322	325	315	318	263	256	246	258	254	247	244
HELMAN			303	314	351	345	345	286	286	281	315	302	265	253
WALKER			299	342	343	337	344	275	277	226	221	241	241	226
TRAILS			100	120	122	123	122	105	107	180	135	139	139	123
AMS			579	562	565	564	517	485	480	461	527	529	510	482
AHS			971	996	971	950	940	942	914	934	888	822	815	895
WILLOW			195	192	179	178	180	159	150	150	163	179	194	209
Ashland Connect			0	0	0	0	0	0	0	0	24	24	27	10
Level 2 Program													5	4
ASD TOTALS			2762	2848	2856	2812	2766	2515	2470	2478	2531	2490	2443	2446

	Monthly Enrollment									
	Sept	Oct	Nov	Dec	Jan	Feb	Mar	Apr	May	June
2025-2026	2446									
2024-2025	2512	2507	2479	2468	2470	2472	2469	2457	2451	2443
2023-2024	2571	2553	2539	2532	2529	2541	2518	2505	2495	2490
2022-2023	2560	2563	2546	2552	2543	2543	2530	2538	2535	2531
2021-2022	2478	2487	2441	2449	2465	2483	2471	2476	2472	2443
2020-2021			2530	2515	2509	2505	2490	2491	2486	2470
2019-2020		2835	2825	2820	2804	2797	2781	2774	2763	2766
2018-2019		2897	2894	2881	2860	2846	2830	2842	2824	2812
2017-2018	2935	2922	2913	2912	2905	2897	2892	2878	2869	2856
2016-2017	2898	2897	2901	2929	2879	2864	2847	2845	2826	2848
2015-2016	2856	2852	2845	2875	2815	2814	2796	2793	2779	2812

NOTES:

1. The Level 2 Program is the District K-12 site-based now located at AMS and AHS,
2. Willow Wind has an additional 32 part-time homeschooled students we report semi-annually.

MONTHLY SCHOOL BOARD FINANCIAL REPORT

Ashland School District No. 5
Financial Data through the Month Ending August 31, 2025
Updated as of 9.5.2025



September 11, 2025
Board Meeting

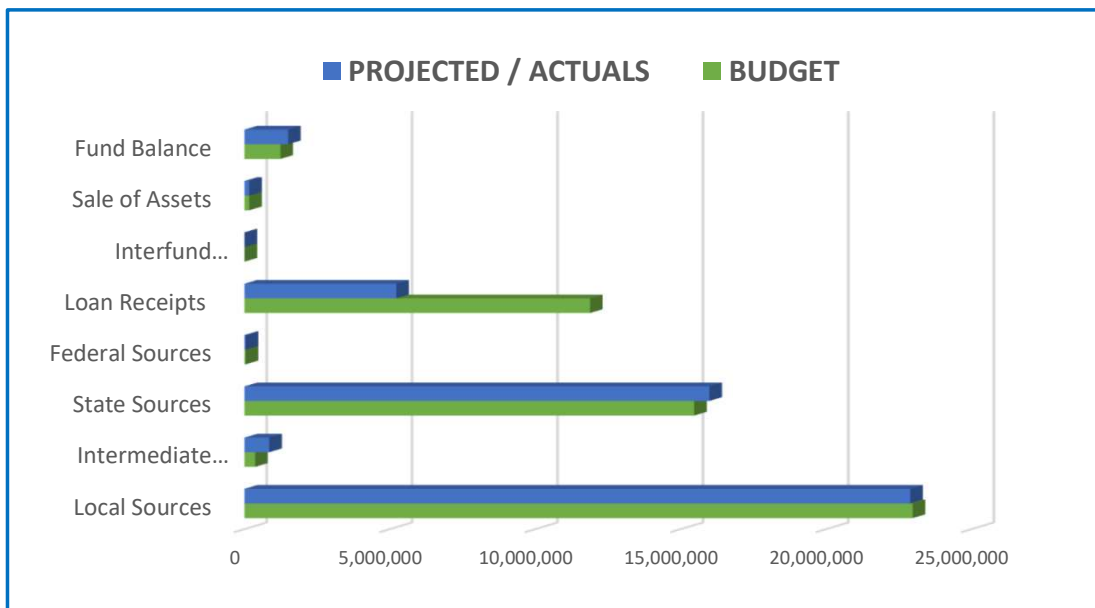
Presented By: Sherry Ely, Director of Business Services

2025.2026 GENERAL FUND (100)

REVENUE

Financial Data Ending August 31, 2025

REVENUE SOURCES BY FUNCTION	BUDGET	PROJECTED / ACTUALS	(Over)/Under Budget	
Local Sources	1000	22,974,370.00	22,889,717.91	84,652.09
Intermediate Sources	2000	365,000.00	850,000.00	(485,000.00)
State Sources	3000	15,459,445.00	15,983,091.28	(523,646.28)
Federal Sources	4000	40,000.00	40,000.00	0.00
Loan Receipts	5150	11,880,000.00	5,220,000.00	6,660,000.00
Interfund Transfers	5200	0.00	0.00	0.00
Sale of Assets	5300	160,000.00	160,000.00	0.00
Fund Balance	5400	1,235,405.00	1,500,000.00	(264,595.00)
		52,114,220.00	46,642,809.18	5,471,410.82



NOTES

REVENUE: We are still on track for anticipated revenues with no indication there will be any great deviation. I am encouraged that our ADM is, so far, coming in higher than what was estimated. I am working with Piper Sandler on what the options are for the \$5.2 million that we have to pay back in December - I am waiting until the end of September to get a better handle on staffing costs and will be putting together a multi year cash flow with various scenarios. I will have more information at the October meeting regarding what options are available to us - and what we are looking at for the debt service that will begin in the 2026.2027 school year. The unknown also - is what, if any, financial obligation we will have for the Lincoln property. We should have a better idea, by the October meeting, if we are going to have any coverage through our Property/Liability Carrier - PACE. Please let me know if you have any specific questions you would like me to address.

Local Sources Include: Property Taxes, Reimbursements, Fees, and other Misc. Revenue.

Intermediate Sources Include: Flowthrough from ESD.

Federal Sources include: Federal Forest Fees

Sale of Assets include: Payment for the Sale of Briscoe

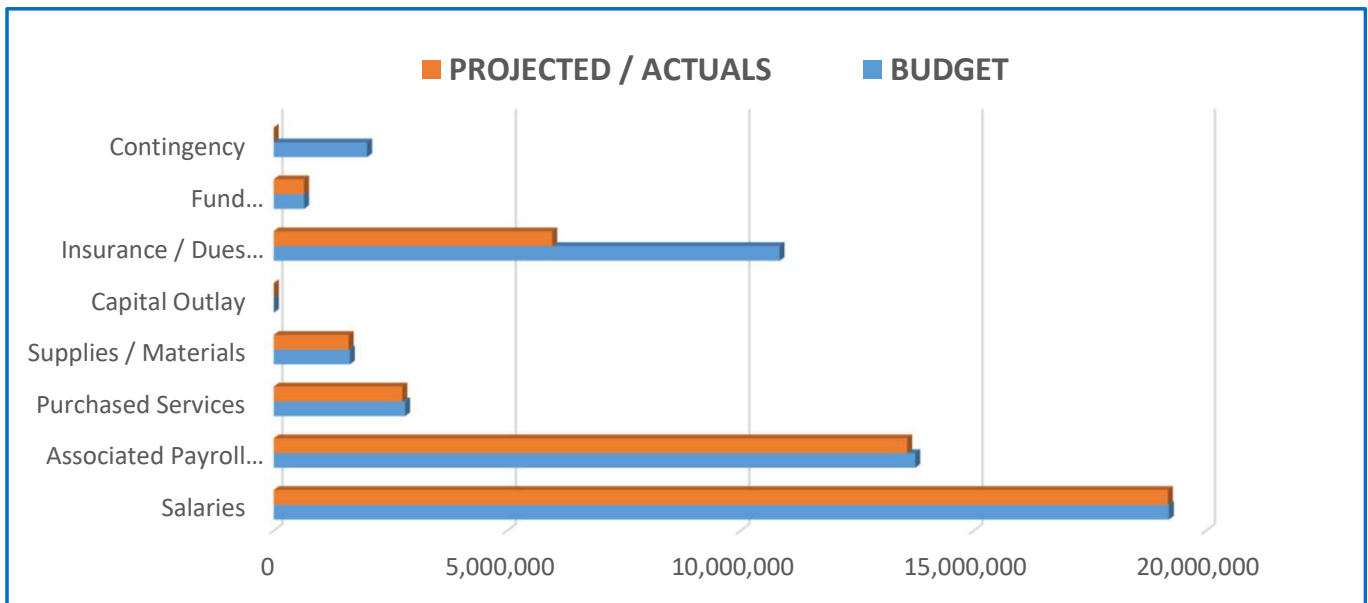
Source	2025.2026 Budget	Actual YTD Rev. 08.31.2025	Projected through 06.30.2026	Total Estimated 2025.2026	(Over)/Under Budget	Actual YTD Rev. 06.30.2025	2024.2025 Budget	(Over)/Under Budget
SSF Funding								
1111 Current Year Property Taxes	17,000,000	76,130 #	16,923,870	17,000,000	(0)	16,685,098	17,475,000	789,902
1112 Delinquent Property Tax	-	-	-	-	-	-	-	-
1190 Penalties & Interest on Taxes	9,500	74	9,500	9,574		10,280		(10,280)
3101 State School Support Funds	15,101,626	3,905,848	11,718,948	15,624,796	(523,170)	14,832,002	14,004,000	(828,002)
3101 SSF - Due to ODE		-	-	-	-	-		-
3103 Common School Fund	357,819	-	358,296	358,296	(477)	348,739	354,000	5,261
Total SSF Funding	32,468,945	3,982,052	29,010,613	32,992,665	(523,646)	31,876,119	31,833,000	(43,119)
Total SSF Revenue	\$ 32,468,945	\$ 3,982,052	\$ 29,010,613	\$ 32,992,665	\$ (523,646)	\$ 31,876,119	\$ 31,833,000	(43,119)
Non State School Support Formula Sources								
Local Sources								
1120 Local Option	4,800,000	21,660	4,778,340	4,800,000	(0)	4,717,915	5,200,000	482,085
1123 Local Option Penalties & Interest	2,700	21	2,700	2,721	(21)	2,912		(2,912)
1311 and 1312 Tuition	50,000	-	50,000	50,000	(0)	43,044	50,000	6,956
1412 Transportation Fees	17,500	-	17,500	17,500	-	18,684	25,000	6,316
1510 Earnings on Investments	750,000	62,500	687,500	750,000	(0)	660,557	900,000	239,443
1740 Fees	1,200	814	508	1,321	(121)	2,010	-	(2,010)
1910 Rentals	18,320	30,120	18,320	48,440	(30,120)	34,736	75,000	40,265
1920 Donations from Private Sources	25,100	15,853	25,100	40,953	(15,853)	907,657	25,000	(882,657)
1940 Serv Provided to Other districts	20,000	455	18,259	18,714	1,286	6,385	25,000	18,615
1960 Recovery of Prior Year Expenditures	15,000	11,025	12,500	23,525	(8,525)	14,747	10,000	(4,747)
1980 Fees Charged to Grants	150,000	-	91,864	91,864	58,136	139,797	300,000	160,203
1990 Miscellaneous Local Revenue	115,050	7,203	27,903	35,106	79,944	119,056	100,000	(19,056)
Total Non Formula Local Sources	5,964,870	149,651	5,730,494	5,880,145		6,667,498	6,710,000	42,502
Intermediate Sources								
2199 - Other Inter. Sources	365,000	-	850,000	850,000		819,410	800,000	(19,410)
Total Intermediate Sources	365,000	-	850,000	850,000	-	819,410	800,000	(19,410)
State/Federal Sources								
3299 Rest. From state	-	-	-	-		-	150,000	150,000
4700 Federal Rev	10,000	-	10,000	10,000			10,000	10,000
4801 Federal Forest	30,000	-	30,000	30,000		40,000	30,000	(10,000)
Total State/Federal Sources	40,000	-	40,000	40,000	-	40,000	190,000	150,000
Other Sources								
5150 Loan Receipts	11,880,000		5,220,000	5,220,000		2,124,188		
5300 Sale/Loss of Fixed Assets	160,000	-	160,000	160,000	-	160,000	160,000	-
5400 Beginning Fund Balance	1,235,405	-		1,500,000	(264,595)	(2,004,188)	1,000,000	3,004,188
Total Other Sources	13,275,405	-	160,000	6,880,000	(264,595)	280,000	1,160,000	880,000
Total Non SSF Revenue	\$ 19,645,275	\$ 149,651	\$ 6,780,494	\$ 13,650,145	\$ (264,595)	\$ 7,806,908	\$ 8,860,000	1,053,092
Total Resources	\$ 52,114,220	\$ 4,131,702	\$ 35,791,108	\$ 46,642,810	\$ 5,471,410	\$ 39,683,027	\$ 40,693,000	1,009,973
						\$ 39,683,022		
							Estimated 24.25 EFB	1,458,426
							Estimated Ending Fund Balance	2,914,503

2025.2026 GENERAL FUND (100)

EXPENSES

Financial Data Ending August 31, 2025

EXPENSES BY OBJECT	BUDGET	PROJECTED / ACTUALS	(Over)/Under Budget	
Salaries	100	19,201,356.00	19,177,841.30	23,514.70
Associated Payroll Costs	200	13,739,894.00	13,567,740.24	172,153.76
Purchased Services	300	2,815,114.00	2,754,034.27	61,079.73
Supplies / Materials	400	1,631,221.00	1,606,442.97	24,778.03
Capital Outlay	500	6,000.00	6,000.00	0.00
Insurance / Dues / Fees/Loan Pmnt	600	10,835,182.00	5,966,248.01	4,868,933.99
Fund Transfers/Flow Thru	700	650,000.00	650,000.00	0.00
Contingency	800	2,000,000.00	0.00	2,000,000.00
		50,878,767.00	43,728,306.80	7,150,460.20



NOTES

EXPENSE: The projected expenditures are very preliminary as we have to finish loading in all of the encumbrances - so adjustments I have made to expenditures are based on a prior two year spending trend analysis. Once we run a September payroll, I will have greater confidence in the encumbrances on the payroll side. Also - I am more confident that we will not have to take anymore draws on the loan (caveat that with the unknown factor of the Lincoln Property). So - at this very preliminary point in the year - I am estimating our Ending Fund Balance to come in at \$2,914,502- 6.67% of projected expenditures. And - again - I want to reiterate - these are **VERY** preliminary numbers.

	2025.2026	Actual YTD EXP	Projected through	Total Estimated		%		2024.2025 YTD	(Over)/Under
	Budget	08.31.2025	06.30.2025	2025.2026	(Over)/ Under	Committed	2024.2025 Budget	Expense	Budget
Instruction									
1111 Elementary, K-5 or K-6	6,128,132.00	15,696.68	6,093,410.19	6,109,106.87	19,025.13	1.00	6,538,879.78	6,372,853.06	166,026.72
1113 Elementary Extracurricular	9,058.00	455.06	8,602.94	9,058.00			5,486.80	10,164.13	-4,677.33
1121 Middle/Junior High Programs	3,505,613.00	10,969.03	3,494,492.49	3,505,461.52	151.48	1.00	4,073,027.82	3,883,237.01	189,790.81
1122 Middle/Junior High School Extracurricular	261,926.00	8,347.71	253,578.29	261,926.00	0.00	1.00	250,512.57	237,170.30	13,342.27
1131 High School Programs	5,568,609.00	43,288.26	5,505,968.65	5,549,256.91	19,352.09	1.00	5,378,092.35	5,017,450.91	360,641.44
1132 High School Extracurricular	945,412.00	70,306.65	875,105.35	945,412.00	0.00	1.00	1,001,075.58	789,165.23	211,910.35
1210 Programs for the Talented and Gifted	3,570.00	0.00	3,570.00	3,570.00	0.00	1.00	11,871.50	8,933.85	2,937.65
1220 Restrictive Pgms for Students w/Disabilities	84,405.00	0.00	82,401.26	82,401.26	2,003.74	0.98	77,941.05	65,487.33	12,453.72
1227 Extended School Year	480.00	0.00	480.00	480.00			5,000.00	2,961.46	2,038.54
1250 Programs for Students w/Severe Disabilities	3,769,521.00	7,738.87	3,796,542.77	3,804,281.64	-34,760.64	1.01	4,250,889.56	3,741,598.91	509,290.65
1280 Alternative Education	1,718,133.00	820.10	1,688,135.68	1,688,955.78	29,177.22	0.98	1,695,037.18	1,630,659.77	64,377.41
1291 English Second Language Programs	300,404.00	0.00	299,430.71	299,430.71	973.29	1.00	144,493.32	124,504.85	19,988.47
1400 Summer School		30,028.47	0.00	30,028.47	-30,028.47			2,477.39	
Total Instruction	22,295,263.00	187,650.83	22,101,718.33	22,289,369.16	5,893.84		23,432,307.51	21,886,664.20	1,545,643.31
	22,295,263.00	187,650.83	22,101,718.33	22,259,340.69					
Support Services									
2110 Attendance and Social Work Services	68,188.00	5,791.77	57,920.98	63,712.75	4,475.25	0.93	60,641.00	60,306.77	334.23
2115 Student Safety	0.00	0.00	0.00	0.00	0.00		0.00	0.00	0.00
2120 Guidance Services	843,276.00	10,090.61	812,171.27	822,261.88	21,014.12	0.98	815,859.32	744,028.35	71,830.97
2130 Health Services	474,530.00	5,007.96	466,488.56	471,496.52	3,033.48	0.99	307,844.00	157,413.67	150,430.33
2140 Psychological Services	117,612.00	0.00	117,612.00	117,612.00	0.00	1.00	251,481.64	154.00	251,327.64
2150 Speech Pathology and Audiology Services	276,911.00	575.00	267,843.92	268,418.92	8,492.08	0.97	443,149.54	552,920.96	-109,771.42
2190 Service Directions, Student Support Svcs	520,690.00	65,020.14	389,863.99	454,884.13	65,805.87	0.87	421,685.00	492,578.18	-70,893.18
2210 Improvement of Instruction Services	116,089.00	19,561.67	95,157.13	114,718.80	1,370.20	0.99	109,473.27	167,697.88	-58,224.61
2220 Library/Media Center	269,676.00	12,299.65	256,590.94	268,890.59	785.41	1.00	295,932.60	262,994.95	32,937.65
2230 Assessment and Testing	86,850.00	0.00	86,850.00	86,850.00	0.00	1.00	8,150.00	202,446.74	-194,296.74
2240 Staff Development	22,773.00	10,715.00	12,058.00	22,773.00	0.00	1.00	59,565.00	18,109.54	41,455.46
2310 Board of Education	221,555.00	128,474.72	93,080.28	221,555.00	0.00	1.00	200,218.00	280,040.98	-79,822.98
2320 Office of the Superintendent Services	469,851.00	78,938.68	357,009.35	435,948.03	33,902.97	0.93	460,535.82	469,399.80	-8,863.98
2410 Office of the Principal Services	3,089,689.00	438,887.35	2,668,095.45	3,106,982.80	-17,293.80	1.01	3,249,747.11	3,008,375.55	241,371.56
2490 Other Support Services—School Administration	143,729.00	0.00	142,922.60	142,922.60	806.40		900.00	129,227.87	-128,327.87
2520 Fiscal Services	690,003.00	181,451.63	486,385.34	667,836.97	22,166.03	0.97	698,011.86	847,082.37	-149,070.51
2540 Maintenance	4,217,104.00	1,004,641.93	3,211,600.14	4,216,242.07	861.93		4,285,988.28	4,209,493.92	76,494.36
2543 Care and Upkeep of Grounds Services	22,000.00	3,975.42	18,024.58	22,000.00	0.00	1.00	39,000.00	35,880.03	3,119.97
2550 Student Transportation Services	1,190,376.00	97,272.38	1,093,103.62	1,190,376.00	0.00	1.00	1,212,285.73	1,437,419.46	-225,133.73
2640 Staff Services	493,855.00	74,229.26	419,625.74	493,855.00	0.00	1.00	406,257.66	324,169.99	82,087.67
2660 Technology Services	2,061,443.00	406,944.96	1,654,498.04	2,061,443.00	0.00	1.00	2,130,579.93	2,111,429.84	19,150.09
2700 Supplemental Retirement	317,304.00	56,013.86	262,143.72	318,157.58	-853.58		283,386.41	326,766.16	-43,379.75
Total Support Services	15,713,504.00	2,599,891.99	12,969,045.65	15,568,937.64	144,566.36		15,740,692.17	15,837,937.01	-97,244.84
	15,713,504.00	2,599,891.99	12,969,045.65	15,568,937.64	144,566.36	15,568,937.64			
Community Services									
3300 Welfare Activities Services	0.00	0.00	0.00	0.00			5,000.00	0.00	5,000.00
Total Community Services	0.00	0.00	0.00	0.00	0.00	0.00	5,000.00	0.00	5,000.00
Other Requirements									
5120 Short Term Debt Service	10,220,000.00		5,220,000.00	5,220,000.00	5,000,000.00				
5200 Transfers of Funds	650,000.00	0.00	650,000.00	650,000.00	0.00	1.00	500,000.00	500,000.00	0.00
		0.00	0.00	0.00	0.00		15,000.00		15,000.00
6000 Contingency	2,000,000.00	0.00	0.00	0.00	2,000,000.00	1.00	1,000,000.00	0.00	1,000,000.00
7000 Unappropriated Ending Fund Balance	1,235,453.00	0.00	0.00	0.00	1,235,453.00	1.00	0.00	0.00	0.00
Total Other Requirements	14,105,453.00	0.00	5,870,000.00	5,870,000.00	3,235,453.00		1,515,000.00	500,000.00	1,015,000.00
		0.00							
Total Requirements	52,114,220.00	2,787,542.82	40,940,763.98	43,728,306.80	8,385,913.20		40,692,999.68	38,224,601.21	2,468,398.47

22

Ashland School District_Appropriations

General Fund (100)	Appropriations	YTD	Encumbrances	Totals	Resolutions	(Over)/Under Budget
1000 Instruction	\$ 22,295,263.00	\$ 187,650.83	\$ 22,101,718.33	\$ 22,289,369.16	\$ -	\$ 5,893.84
2000 Support Services	\$ 15,713,504.00	\$ 2,599,891.99	\$ 12,969,045.65	\$ 15,568,937.64	\$ -	\$ 144,566.36
3000 Community Services	\$ -	\$ -	\$ -	\$ -	\$ -	\$ -
5120 Short Term Debt Service	\$ 10,220,000.00	\$ -	\$ 5,220,000.00	\$ 5,220,000.00	\$ -	\$ 5,000,000.00
5200 Transfers	\$ 650,000.00	\$ -	\$ 650,000.00	\$ 650,000.00	\$ -	\$ -
6000 Contingency	\$ 2,000,000.00	\$ -	\$ -	\$ -	\$ -	\$ 2,000,000.00
Sub Total	\$ 50,878,767.00	\$ 2,787,542.82	\$ 40,940,763.98	\$ 43,728,306.80	\$ -	\$ 7,150,460.20
7000 Unappropriated EFB	\$ 1,235,453.00	\$ -	\$ -	\$ -	\$ -	\$ 1,235,453.00
Donations Fund Raising (105)						
1000 Instruction	\$ 412,948.00	\$ 47,245.04	\$ 2,597.88	\$ 49,842.92	\$ -	\$ 363,105.08
2000 Support Services	\$ 11,990.00	\$ 1,537.47	\$ -	\$ 1,537.47	\$ -	\$ 10,452.53
3000 Community Services	\$ 4,900.00	\$ -	\$ -	\$ -	\$ -	\$ 4,900.00
Sub Total	\$ 429,838.00	\$ 48,782.51	\$ 2,597.88	\$ 51,380.39	\$ -	\$ 378,457.61
Class Fees (110)						
1000 Instruction	\$ 260,046.00	\$ 3,392.56	\$ 1,665.01	\$ 5,057.57	\$ -	\$ 254,988.43
2000 Support Services	\$ 28,324.00	\$ -	\$ -	\$ -	\$ -	\$ 28,324.00
3000 Community Services	\$ -	\$ -	\$ -	\$ -	\$ -	\$ -
Sub Total	\$ 288,370.00	\$ 3,392.56	\$ 1,665.01	\$ 5,057.57	\$ -	\$ 283,312.43
Special Revenue Funds						
1000 Instruction	\$ 3,709,448.00	\$ 18,503.45	\$ 2,599,637.46	\$ 2,618,140.91	\$ -	\$ 1,091,307.09
2000 Support Services	\$ 2,388,745.00	\$ 44,834.54	\$ 1,668,454.16	\$ 1,713,288.70	\$ -	\$ 675,456.30
3000 Community Services	\$ 1,283,100.00	\$ 110,934.33	\$ 1,013,432.27	\$ 1,124,366.60	\$ -	\$ 158,733.40
4000 Facility Acquisition	\$ 40,000.00	\$ -	\$ -	\$ -	\$ -	\$ 40,000.00
5200 Transfers	\$ -	\$ -	\$ -	\$ -	\$ -	\$ -
5300 Approtionment of funds	\$ -	\$ -	\$ -	\$ -	\$ -	\$ -
Sub Total	\$ 7,421,293.00	\$ 174,272.32	\$ 5,281,523.89	\$ 5,455,796.21	\$ -	\$ 1,965,496.79
Debt Service (301)						
5100 Debt Service	\$ 8,480,400.00	\$ -	\$ 8,480,400.00	\$ 8,480,400.00	\$ -	\$ -
Sub Total	\$ 8,480,400.00	\$ -	\$ 8,480,400.00	\$ 8,480,400.00	\$ -	\$ -
Facilities (400)						
2000 Support Services	\$ 396,515.00	\$ 11,476.75	\$ 24,884.26	\$ 36,361.01	\$ -	\$ 360,153.99
4000 Facilities Acquisition	\$ 7,065,009.00	\$ 235,092.85	\$ 2,845,240.00	\$ 3,080,332.85	\$ -	\$ 3,984,676.15
6000 Contingencies	\$ 3,000,000.00	\$ -	\$ -	\$ -	\$ -	\$ 3,000,000.00
Sub Total	\$ 10,461,524.00	\$ 246,569.60	\$ 2,870,124.26	\$ 3,116,693.86	\$ -	\$ 7,344,830.14

Ashland School District_Appropriations

Internal Service Funds (600)

2000 Support Services	\$ 10,342,014.00	\$ 664,204.28	\$ 6,340,254.94	\$ 7,004,459.22	\$ -	\$ 3,337,554.78
5200 Transfers	\$ 25,000.00	\$ -	\$ -	\$ -	\$ -	\$ 25,000.00
6000 Contingencies	\$ 859,650.00	\$ -	\$ -	\$ -	\$ -	\$ 859,650.00
Sub Total	\$ 11,226,664.00	\$ 664,204.28	\$ 6,340,254.94	\$ 7,004,459.22	\$ -	\$ 4,222,204.78

Trust & Agency Funds (700)

1000 Instruction	\$ -	\$ -	\$ -	\$ -	\$ -	\$ -
2000 Support Services	\$ -	\$ -	\$ -	\$ -	\$ -	\$ -
3000 Community Services	\$ 285,000.00	\$ 164,750.00	\$ -	\$ 164,750.00	\$ -	\$ 120,250.00
6000 Contingency	\$ -	\$ -	\$ -	\$ -	\$ -	\$ -
Sub Total	\$ 285,000.00	\$ 164,750.00	\$ -	\$ 164,750.00	\$ -	\$ 120,250.00
7000 Unappropriated EFB	\$ 13,750.00	\$ -			\$ -	

Total Appropriations

\$ 89,471,856.00	\$ 4,089,514.09	\$ 63,917,329.96	\$ 68,006,844.05	\$ -	\$ 21,465,011.95
-------------------------	------------------------	-------------------------	-------------------------	-------------	-------------------------

Total Unappropriated

\$ 1,249,203.00	\$ -	\$ -	\$ -	\$ -	\$ 1,249,203.00
-----------------	------	------	------	------	-----------------

TOTAL

\$ 90,721,059.00	\$ 4,089,514.09	\$ 63,917,329.96	\$ 68,006,844.05	\$ -	\$ 22,714,214.95
-------------------------	------------------------	-------------------------	-------------------------	-------------	-------------------------



AHS Quad Renovation with post Seismic Retrofit Science Building in the backdrop!



ASHLAND SCHOOL DISTRICT CAPITAL BOND PROGRAM

END OF MONTH REPORT – AUGUST 2025



GENERAL PROGRAM UPDATE

Summer has concluded and the 2025/2026 school year has commenced. Ashland High School students are returning to a campus where the Modernization Project and Science Building Seismic Retrofit are essentially complete. All spaces impacted by construction are fully functional and have been returned to the Ashland Schol District for unlimited use.

Remaining items to be closed out include finalizing the commissioning process, resolving minimal punch items and completion of some long lead feature items in the Quad.

Simultaneous completion of these major AHS projects implies that the district wide bond work is nearing conclusion. While the impact of these two projects to the AHS campus is easily observed visually, a large majority of the overall scope is more subtle in the form of mechanical system upgrades, improvements to safety and security and strategic improvements to the functionality of renovated spaces. The challenges that have been overcome and the resulting impression these two projects have had on the AHS campus as a whole should serve as an example of the dedicated bond stewardship that the bond projects team is committed to.

PROJECT ADMINISTRATION

Project administration and accounting support are two key areas critical to Program success. This is a combined effort of HMK Company and ASD Accounting Department. In the month of August, we requested 1 purchase order and processed 6 invoices.

Contract Type	Number of Contracts	Value
Professional Service Agreements / Design Contracts	1	\$ 22,756,235
Construction Contracts	--	\$ 107,635,484



LOCAL VENDORS AND CONTRACTORS

The following list of local vendors are currently working on the projects.

ASHLAND AREA VENDORS and CONTRACTORS

Arkitek:design&architecture	Adroit Construction Co.
Ciota Engineering	DOBRIN
Covey Pardee Landscape Architecture	Infinity Electric
Douglas Engineering Pacific	Van Row Mechanical
HMK Company	Cascade Communications
KenCairn Landscape Architecture	Quality Fence
Bean Electric	Pacific 3D Reality Capture
Renfro	Welburn Electric
Pariani Land Surveying	Britannia
Powell Engineering	Patriot Landscaping
ZCS Engineering & Architecture	Sandeem Masonry
Beflor	Alco
Top Notch	Quality Fence
Sandeem Masonry	S&S Sheetmetal
Metal Masters	Urban Racks
Moore Construction	Curtis Huntley
Devry	Cut N' Break
Precision Electric	Advanced Air
Hall of Fame Movers	New Horizons Woodworks
Milestone Landscape Group	Viking Concrete Cutting
Figueroa's Landscaping & Construction	Artoff Construction
North Core Excavation	LLAD
Southern Oregon Painting Company	True South Solar
Pressure Point Roofing	

Ashland Area, defined as Rogue Valley



ASHLAND MIDDLE SCHOOL & TRAILS

PROJECT ADDITION & RENOVATIONS TO EXISTING BUILDING

PROJECT DESCRIPTION

- New and renovated classroom space to replace 3 existing classroom wings, approx. 65,000 sq. ft.
- Campus security
- Air Quality improvements and Climate resilience for existing buildings, including new construction
- Required tech infrastructure

SCHEDULE & KEY MILESTONES	START	COMPLETION	% CPL	COMMENT
Pre-Design & Schematics	08/12/19	11/15/19	100%	
Design Development	12/09/19	02/28/20	100%	
Construction Documents	03/23/20	08/07/20	100%	
Bid and Award Site Package	10/27/20	11/02/20	100%	
Bid and Award Building Package	10/27/20	11/02/20	100%	
Construction	11/03/20	10/21/22	100%	
Substantial Completion	10/21/22	03/01/23	100%	
Owner Occupancy	08/24/22	10/31/22	100%	
Post Occupancy Evaluation	03/01/23	12/21/23	100%	
Warranty Period	03/01/23	03/01/24	100%	
Other			0%	

CURRENT ACTIVITIES

Ashland Middle School and TRAILS Outdoor School are complete, and staff and students are fully occupying the new spaces.

Throughout each campus, upgrades in HVAC systems, plumbing, and electrical are prevalent, introducing energy efficiency air quality improvements and climate resilience resulting in more accommodating environments for maximum learning opportunities. Each school has received upgraded windows, new roof systems, new restrooms and redesigned administrative/office spaces. The project also resulted in improvements to overall campus security, technology infrastructure, seismic upgrades and accessibility. Both schools have been retrofitted with fire alarm and fire suppression systems as well. Each school campus has its own vehicle entry and exit with clear-cut pick up and drop off areas to assist with reduced congestion during high traffic periods.



Ashland Middle School comprises about 40,000 sq. ft. of the project including a new library and addition of a newly constructed two-story 6th grade building with an elevator. The campus includes a leadership room with full kitchen designed to host campus events. The SPED area includes multiple classrooms and offices with an additional calming space, private restrooms, and secure outdoor learning area. The covered courtyard is central to the campus with a multifunctional design including reclaimed wood beam stadium style benches for outdoor educational purposes and skateboard accommodating features allowing students a safe and fresh outdoor space for various activities. The kitchen and cafeteria have also been upgraded with new appliances and renewed finishes.

TRAILS Outdoor School has an entirely separate, newly renovated building stretching across 26,000 sq. ft. of useable space. The campus now includes 5 classrooms, a library, art lab, testing room, SPED room, music facility and multi-purpose room. There is also a grand outdoor structure attached to the building, allowing activities in adverse weather, including an integrated rock-climbing wall. The multi-purpose room, also known as the community room, is the highlight of the building. This area not only provides a place for staff and students to congregate for events but is equipped with large windows and roll up doors that can be opened to connect to the outdoors. Designing this aspect of the multi-purpose room was fully intentional and a defining characteristic of the school culture. The adjacent ready room has a full kitchen, which accommodates preparation for outdoor activities as well as daily meal requirements.

ACTIVITIES SCHEDULED FOR NEXT PERIOD

- Warranty Work

ADDITIONAL INFORMATION

For questions, comments or additional information, please contact:

Josh Whitaker, Project Manager

josh.whitaker@hmkco.org

541.601.3638



PROJECT PHOTO GALLERY

Combined Ashland Middle School and TRAILS Outdoor School Campus





TRAILS Outdoor School





Ashland Middle School





HELMAN ELEMENTARY SCHOOL

PROJECT ADDITION & RENOVATIONS TO EXISTING BUILDING

PROJECT DESCRIPTION

- New secure classroom wing to replace 2 classroom pods, approx. 23,000 sq. ft.
- Campus security
- Includes District Wide HVAC improvements which includes Climate resilience for all buildings, rather than just new construction
- Required tech infrastructure upgrades

SCHEDULE & KEY MILESTONES	START	COMPLETION	% CPL	COMMENT
Pre-Design & Schematics	06/17/19	01/23/20	100%	
Design Development	02/01/20	04/30/20	100%	
Construction Documents	05/14/20	09/24/20	100%	
Bid and Award Site Package	09/04/20	10/16/20	100%	
Bid and Award Building Package	10/15/20	12/15/20	100%	
Construction	10/30/20	08/31/22	100%	
Building Commissioning	06/01/22	03/31/23	100%	
Substantial Completion	08/31/22	03/01/23	100%	
Owner Occupancy	08/23/22	08/24/22	100%	
Post Occupancy Evaluation	03/02/23	08/01/23	100%	
Warranty Period	03/01/23	03/01/24	100%	
Other			0%	

CURRENT ACTIVITIES

With the completion of this project, Helman Elementary School staff, students and community members are now able to fully utilize the renovated campus. The renovations included a brand new approximately 23,000 square foot classroom building to replace two of the existing quad buildings.



The construction of this building has a net reduction in the school's energy use that truly models the Ashland School District's adoption of the City of Ashland's Climate and Energy Action Plan (CEAP). The new classroom building also includes a SPED instructional space with exterior play area, sensory room with state-of-the-art furnishings, a large multipurpose room with an operable exterior wall and multiple breakout spaces scattered throughout the building.

The front administration area underwent a full renovation that included an access-controlled entry. New reception area, conference room and staff work room concluded the new spaces included in the administration area.

Campus wide, a new 4-Pipe hydronic HVAC system that includes new high efficiency boilers, new air handlers and a new chiller was installed. A new building controls system, allowing the district to operate the new systems as efficiently as possible and minimize any maintenance or troubleshooting delays, was also included. The campus also received a new fire alarm system bringing everything up to current building codes.

On the exterior of the site, a new entry drive was installed that will aid with traffic congestion during high traffic periods. Additional parking was installed at the south end of the campus. There is a brand new 1/8th mile walking track and new playground that is accessible to all. New landscaping wraps up the remainder of the campus.

ACTIVITIES SCHEDULED FOR NEXT PERIOD

- N/A

ADDITIONAL INFORMATION

For questions, comments, or additional information, please contact:

Mike Freeman, Project Manager
Mike.freeman@hmkco.org
541.499.7996



PROJECT PHOTO GALLERY

Completed Project





ASHLAND HIGH SCHOOL

PROJECT ASHLAND HIGH SCHOOL RENOVATION

PROJECT DESCRIPTION

- Improved accessibility and flexibility for the Humanities and Science Buildings.
- Repurpose or reconfigure existing spaces for science program requirements.
- Upgrades for air quality, security, restrooms, and technology infrastructure.
- Seismic rehabilitation at both Humanities and Science buildings

SCHEDULE & KEY MILESTONES	START	COMPLETION	% CPL	COMMENT
Pre-Design & Schematics	01/27/20	10/02/20	100%	
Design Development	10/02/20	01/29/21	100%	
Construction Documents	01/29/21	1/31/24	100%	
Permits, Bid and Award	05/31/23	3/29/24	100%	
Construction	06/16/23	12/31/24	100%	
Substantial Completion	12/31/24	12/31/24	96%	
Post Occupancy Evaluation	TBD	TBD	0%	
Warranty Period	TBD	TBD	0%	TBD
Other				

CURRENT ACTIVITIES

Construction related tasks for the Modernization Project are complete including installation of the new chiller system at the gym. Owner demonstration and training of news systems have been completed, and the majority of punch items have been resolved. The final remaining tasks to be concluded are being addressed with commissioning of mechanical, electrical and plumbing systems.

The Science Building Seismic Retrofit and Quad Renovation was completed in August with exception to installation of the sunshade system and concrete bench top at the South end of the Quad. The sunshade foundations are in place, but fabrication of the actual structure was delayed. Similar to the sunshade, the bench top design is being revisited due to delayed resource availability. These final pieces of the Quad are anticipated to be addressed in October. There is currently no impact to the useability of the Quad, but these final pieces of closeout will remain a priority for the project team. The Science Building has been completely turned over for unrestricted use by staff and students. The magnitude of work completed coupled with the maximization of budget on this short duration project will prove a valuable enhancement to the Ashland High School campus for years to come.



ACTIVITIES SCHEDULED FOR NEXT PERIOD

- Project completion

ADDITIONAL INFORMATION

For questions, comments, or additional information, please contact:

Josh Whitaker, Project Manager

josh.whitaker@hmkco.org

541.601.3638



PROJECT PHOTO GALLERY

Renovated Science Building with a partial glimpse at the quad upgrades in the foreground





Completed security system at the Southeast corner of Science Building





Seismic structural modifications, new soffit and siding, and new concrete walkways at Science Building





WALKER ELEMENTARY SCHOOL

PROJECT ADDITION & RENOVATIONS PROJECT

PROJECT DESCRIPTION

- Comprehensive renovation and seismic improvement of historic Walker Elementary School main building and gymnasium
- Includes replacement of classroom wing, with new classrooms, redesigned entry, new finishes, doors, windows and roof
- Also, includes the district wide HVAC improvements

SCHEDULE & KEY MILESTONES	START	COMPLETION	% CPL	COMMENT
Pre-Design & Schematics	01/07/20	09/22/20	100%	Complete
Design Development	09/22/20	12/10/20	100%	Complete
Construction Documents	12/10/20	08/13/21	100%	Complete
Bid and Award	03/22/21	05/14/21	100%	Complete
Construction Documents Phase 2	10/18/20	11/16/21	100%	Complete
Bid and Award Phase 2	03/22/21	12/14/21	100%	Complete
Construction	07/17/21	04/17/23	100%	Complete
Building Commissioning	01/16/23	04/17/23	100%	Complete
Owner Occupancy	04/17/23	04/18/23	100%	Complete
Post Occupancy Evaluation	04/18/23	07/17/23	100%	Complete
Warranty Period	04/18/23	04/18/24	100%	Complete
Other			0%	

CURRENT ACTIVITIES

The Walker Elementary School renovation is now complete. This project brought much needed improvements to the existing Walker School that will provide the community with a state-of-the-art educational facility for many years to come. The older classroom annex was demolished in order to construct a new classroom wing that also allowed the front entrance to be relocated creating a much more intuitive office space. The historical wing of the building received structural upgrades by way of a state funded seismic grant. The entire classroom building received new finishes, upgraded energy efficient exterior envelope that included new windows and new furniture.

The renovation and addition has a net reduction in the school's energy use that truly models the Ashland School District's adoption of the City of Ashland's Climate and Energy Action Plan (CEAP). The



new addition also includes a SPED instructional space with exterior play area, sensory room with state-of-the-art furnishings, dedicated resource rooms and multiple breakout spaces scattered throughout the building.

Campus wide, a new 4-Pipe hydronic HVAC system that includes new high efficiency boilers, new air handlers and a new chiller was installed. A new building controls system, allowing the district to operate the new systems as efficiently as possible and minimize any maintenance or troubleshooting delays, was also included. The campus also received a new fire alarm system bringing everything up to current building codes.

The gym underwent a seismic upgrade making this building now rated to withstand a seismic event. In addition, it received a new roof and exterior paint as well as HVAC upgrades.

The exterior of the site underwent extensive renovations in order to improve campus security and student and automobile circulation. The parking area was extended, and the traffic flow was reconfigured to create a more cohesive format for pick up and drop off that eases congestion in the neighborhood and adjoining streets. The exterior was fenced creating a secure campus and the newly configured front entrance added access control in order to create a single point of entrance. A new fully accessible playground was installed as well. New landscaping wraps up the exterior improvements.

ACTIVITIES SCHEDULED FOR NEXT PERIOD

- N/A

HIGHLIGHTS, CHALLENGES, SOLUTIONS

HIGHLIGHTS:

- Project completion.

CHALLENGES:

- No current challenges to note.

ADDITIONAL INFORMATION

For questions, comments, or additional information, please contact:

Josh Whitaker, Project Manager

josh.whitaker@hmkco.org

541.601.3638



PROJECT PHOTO GALLERY

Aerial Photos of New Renovation and Addition







Placard Depicting the Seismic Upgrade through the Oregon Seismic Rehabilitation Grant





**ASHLAND SCHOOL DISTRICT
CAPITAL CONSTRUCTION
DISTRICT WIDE ROLLUP BUDGET
JUNE 30, 2025**

Project Expense	Original Budget	Paid to Date	Remaining Balance	Revised Budget
Hard Cost				
Technology	\$ 3,420,000	\$ 3,912,847	\$ (513,623)	\$ 3,399,224
Restrooms	\$ 3,087,500	\$ -	\$ -	\$ -
Security	\$ 2,850,000	\$ 299,527	\$ 7,415	\$ 306,942
HVAC & MEP	\$ 13,569,000	\$ -	\$ -	\$ -
Transportation	\$ -	\$ 559,844	\$ 1	\$ 559,845
Bellview	\$ -	\$ 1,590,709	\$ 106,573	\$ 1,697,282
Maintenance	\$ -	\$ 676,982	\$ -	\$ 676,982
District Office	\$ -	\$ -	\$ -	\$ -
Asbestos Abatement	\$ 316,447	\$ -	\$ -	\$ -
Construction Contingency	\$ 1,348,640	\$ -	\$ 300,769	\$ 300,769
Construction Sub Total	\$ 24,591,587	\$ 7,039,909	\$ (98,865)	\$ 6,941,044
Soft Cost				
Administrative Cost				
Legal Fees	\$ 35,000	\$ -	\$ -	\$ -
Bond Counsel	\$ -	\$ -	\$ -	\$ -
Bond Issuance Cost	* \$ -	\$ -	\$ -	\$ -
Builders Risk Insurance	\$ -	\$ -	\$ -	\$ -
Project Management	\$ 733,063	\$ -	\$ -	\$ -
Reimbursable Expenses	** \$ 48,870	\$ -	\$ -	\$ -
Communications	\$ -	\$ -	\$ -	\$ -
Sustainability	\$ -	\$ -	\$ -	\$ -
Site Cost				
Site Survey	\$ 30,000	\$ 2,270	\$ 30,000	\$ 32,270
Geo-Tech Report	\$ -	\$ -	\$ -	\$ -
Planning Cost				
Design Fees	\$ 2,026,632	\$ 117,637	\$ 164,421	\$ 282,058
A & E Reimbursable Expenses	\$ 41,670	\$ -	\$ 10,000	\$ 10,000
Commissioning	\$ 145,267	\$ 183,995	\$ (15,995)	\$ 168,000
Printing & Plan Distribution	\$ 9,416	\$ -	\$ -	\$ -
Hazardous Materials Consultant	\$ 138,808	\$ 20,890	\$ 460	\$ 21,350
Construction Testing	\$ -	\$ -	\$ -	\$ -
Constructability Review	\$ 72,634	\$ -	\$ -	\$ -
Plan Review & Building Permits	\$ 250,971	\$ 60,724	\$ 46,754	\$ 107,478
Special Inspection and Testing	\$ 50,053	\$ -	\$ 21,000	\$ 21,000
Miscellaneous Fees	\$ -	\$ 43,513	\$ (11,213)	\$ 32,300
Ed Specs	\$ -	\$ -	\$ -	\$ -
Kitchen	\$ -	\$ -	\$ -	\$ -
Miscellaneous				
Legal Advertisements	\$ 4,823	\$ 1,217	\$ 3,690	\$ 4,907
Furniture, Fixtures, and Equipment (FF&E)	\$ -	\$ 7,631	\$ 17,369	\$ 25,000
Technology	\$ -	\$ 40,623	\$ 377	\$ 41,000
Technology (Design)	\$ 210,634	\$ 1,847	\$ 26,830	\$ 28,677
Acoustics	\$ 36,317	\$ -	\$ -	\$ -
Criminal Background Checks	\$ 3,162	\$ -	\$ -	\$ -
System Development Charges	\$ -	\$ -	\$ -	\$ -
Value Engineering	\$ 72,634	\$ -	\$ -	\$ -
Utility Connection Fee	\$ 116,214	\$ -	\$ -	\$ -
Unallocated Owner Contingency	\$ 2,964,431	\$ -	\$ 37,587	\$ 37,587
Inflation	\$ 1,885,566	\$ -	\$ 74,433	\$ 74,433
Sub Total Soft Cost	\$ 8,876,165	\$ 480,347	\$ 405,713	\$ 886,060
Total Project Cost	\$ 33,467,752	\$ 7,520,256	\$ 306,848	\$ 7,827,104

* Budget has been moved to the Project Level
**Budget has been moved to the Program Level



**ASHLAND SCHOOL DISTRICT
CAPITAL CONSTRUCTION
PROGRAM LEVEL BUDGET
JUNE 30, 2025**

Program Revenue ¹	Original Budget	Received to Date	Allocated to Date	Unallocated Balance	Revised Budget
Bond and Other Proceeds					
Bond Proceeds	\$ 107,380,000	\$ 107,380,000	\$ 107,380,000	\$ -	\$ 107,380,000
Bond Premium	\$ 22,436,690	\$ 22,436,690	\$ 20,743,997	\$ 1,692,692	\$ 22,436,690
OSCIM Grant (Ashland Middle School)	\$ 1,032,927	\$ 4,000,000	\$ 4,000,000	\$ -	\$ 4,000,000
Seismic (Walker)	\$ 2,500,000	\$ 2,497,447	\$ 2,497,447	\$ -	\$ 2,497,447
Seismic (Walker-Gymnasium)	\$ -	\$ 1,816,151	\$ 1,816,151	\$ -	\$ 1,816,151
Seismic (Ashland High School)	\$ -	\$ 2,011,704	\$ 2,011,704	\$ -	\$ 2,011,704
Seismic (Ashland High School Science)	\$ -	\$ -	\$ 2,500,000	\$ -	\$ 2,500,000
	\$ 5,000,000	\$ 5,921,594	\$ 4,628,566	\$ 1,293,028	\$ 5,921,594
Miscellaneous	\$ -	\$ 428,941	\$ -	\$ 428,941	\$ 428,941
Total Revenue	\$ 138,349,617	\$ 146,492,526	\$ 145,577,865	\$ 3,414,661	\$ 148,992,526

1. Program Revenue is an estimate. Accuracy should be verified by district personnel

The financial statement presentation has been prepared as a courtesy by HMK. They are based on information derived from ledgers provided by the agency, which have not been independently verified. The financial information included in this presentation is unaudited and should be used for informational purposes only and should not be relied upon for any other use.



**ASHLAND SCHOOL DISTRICT
CAPITAL CONSTRUCTION
PROGRAM BUDGET
JUNE 30, 2025**

	Original Budget	Paid to Date	Remaining Balance	Revised Budget
Program Expense				
District Wide Programs	\$ 24,591,587	\$ 7,039,909	\$ (98,865)	\$ 6,941,044
District Wide Solar Projects	\$ -	\$ 931,886	\$ 718,912	\$ 1,650,798
Helman Elementary	\$ 11,294,084	\$ 15,367,756	\$ (232,685)	\$ 15,135,071
Walker Elementary	\$ 11,252,185	\$ 30,130,377	\$ 87,160	\$ 30,217,537
Ashland Middle School	\$ 21,960,270	\$ 35,813,522	\$ (366,146)	\$ 35,447,376
Ashland High School	\$ 9,124,089	\$ 24,629,279	\$ 2,987,810	\$ 27,617,089
Willow Wind Learning Center	\$ -	\$ 1,732,696	\$ 1,732	\$ 1,734,428
Construction Sub Total	\$ 78,222,215	\$ 115,645,424	\$ 3,097,918	\$ 118,743,343
Soft Cost				
Administrative Cost				
Legal Fees	\$ 100,000	\$ 29,844	\$ (6,430)	\$ 23,414
Bond Counsel	\$ -	\$ -	\$ -	\$ -
Bond Issuance Cost	\$ 625,293	\$ 625,293	\$ -	\$ 625,293
Builders Risk Insurance	\$ -	\$ 80,126	\$ (7,926)	\$ 72,200
Project Management	\$ 2,274,483	\$ 4,637,321	\$ (628,457)	\$ 4,008,864
Reimbursable Expenses	\$ 151,631	\$ 328,755	\$ (1,788)	\$ 326,967
Communications	\$ -	\$ 199,367	\$ (6,095)	\$ 193,272
Sustainability	\$ -	\$ -	\$ -	\$ -
Miscellaneous Fees (Bank, consulting)	\$ -	\$ 415,083	\$ (109,434)	\$ 305,649
Ashland SD Staff	\$ -	\$ 1,322,706	\$ (465,070)	\$ 857,636
Lincoln Elementary	\$ -	\$ 42,354	\$ 446	\$ 42,800
District Wide Roofing Project	\$ -	\$ 46,200	\$ -	\$ 46,200
Site Cost				
Site Survey	\$ 213,903	\$ 149,234	\$ 8,489	\$ 157,723
Geo-Tech Report	\$ 123,179	\$ 114,071	\$ 10,663	\$ 124,734
Planning Cost				
Design Fees	\$ 7,414,694	\$ 8,617,168	\$ (437,367)	\$ 8,179,800
A & E Reimbursable Expenses	\$ 144,431	\$ 35,420	\$ 81,103	\$ 116,523
Commissioning	\$ 334,589	\$ 393,279	\$ (32,970)	\$ 360,309
Printing & Plan Distribution	\$ 31,288	\$ 1,724	\$ 55	\$ 1,779
Hazardous Materials Consultant	\$ 418,761	\$ 560,005	\$ (84,149)	\$ 475,856
Construction Testing	\$ -	\$ -	\$ -	\$ -
Constructability Review	\$ 285,616	\$ 573,003	\$ 470	\$ 573,473
Plan Review & Building Permits	\$ 764,778	\$ 3,355,949	\$ 161,265	\$ 3,517,213
Special Inspection and Testing	\$ 391,469	\$ 922,685	\$ (381,980)	\$ 540,705
Miscellaneous Fees	\$ 205,522	\$ 1,061,577	\$ (219,373)	\$ 842,204
Ed Specs	\$ 73,532	\$ -	\$ -	\$ -
Kitchen	\$ 32,940	\$ -	\$ -	\$ -
Miscellaneous				
Legal Advertisements	\$ 12,823	\$ 1,457	\$ 5,450	\$ 6,907
Furniture, Fixtures, and Equipment (FF&E)	\$ 2,569,031	\$ 2,666,350	\$ 72,489	\$ 2,738,839
Technology	\$ 404,005	\$ 466,937	\$ 20,763	\$ 487,700
Technology (Design)	\$ 467,536	\$ 7,252	\$ 63,223	\$ 70,475
Acoustics	\$ 113,387	\$ -	\$ -	\$ -
Criminal Background Checks	\$ 9,862	\$ 12,213	\$ (130)	\$ 12,083
System Development Charges	\$ 332,544	\$ 19,692	\$ (600)	\$ 19,092
Value Engineering	\$ 194,985	\$ -	\$ -	\$ -
Utility Connection Fee	\$ 116,214	\$ -	\$ -	\$ -
Unallocated Owner Contingency	\$ 9,104,657	\$ -	\$ 38,849	\$ 38,849
Inflation	\$ 6,111,120	\$ -	\$ 74,433	\$ 74,433
Sub Total Soft Cost	\$ 33,022,273	\$ 26,685,064	\$ (1,844,071)	\$ 24,840,992
Total Project Cost	\$ 111,244,488	\$ 142,330,488		\$ 143,584,335



**ASHLAND SCHOOL DISTRICT
CAPITAL CONSTRUCTION
PROGRAM LEVEL BUDGET
JUNE 30, 2025**

Program Expense		Original Budget	Paid to Date	Remaining Balance	Revised Budget
Soft Cost					
Legal Fees		\$ -	\$ 26,896	\$ (3,482)	\$ 23,414
Bond Counsel		\$ -	\$ -	\$ -	\$ -
Bond Issuance Cost		\$ 625,293	\$ 625,293	\$ -	\$ 625,293
Builders Risk Insurance		\$ -	\$ -	\$ -	\$ -
Project Management	12	\$ -	\$ 4,275,868	\$ (307,004)	\$ 3,968,864
Reimbursable Expenses	11	\$ -	\$ 311,211	\$ 356	\$ 311,567
Communications	11	\$ -	\$ 199,367	\$ (6,095)	\$ 193,272
Sustainability		\$ -	\$ -	\$ -	\$ -
Criminal Background Checks	10,11	\$ -	\$ 12,213	\$ (130)	\$ 12,083
Printing & Plan Distribution	10	\$ -	\$ 779	\$ -	\$ 779
Miscellaneous Fees (Bank, consulting)	11	\$ -	\$ 415,083	\$ (109,434)	\$ 305,649
Ashland SD Staff	11,12	\$ -	\$ 1,322,706	\$ (465,070)	\$ 857,636
Lincoln Elementary		\$ -	\$ 42,354	\$ 446	\$ 42,800
District Wide Roofing Project		\$ -	\$ 46,200	\$ -	\$ 46,200
Sub Total Soft Cost		\$ 625,293	\$ 7,277,969	\$ (890,412)	\$ 6,387,557

1. Reallocated within budget
2. Reallocated within budget (06.30.21)
3. Reallocated within budget (03.31.22)
4. Reallocated Bond Issuance Costs back to Program Level (06.30.22)
5. Reallocated within budget (06.30.22)
6. Reallocated from investment for add'l staff time (08.31.22)
7. Reallocated from investment income and budget (09.30.22)
8. Reallocated within budget (10.31.22)
9. Reallocated within budget (12.31.22)
10. Reallocated within budget (01.31.23)
11. Reallocated \$360k from Security (04.30.23)
12. Reallocated within budget (05.31.23)

Intentionally left blank. Do not delete!



**ASHLAND SCHOOL DISTRICT
CAPITAL CONSTRUCTION
DW RESTROOMS BUDGET
JUNE 30, 2025**

Project Expense		Original Budget		Paid to Date		Remaining Balance		Revised Budget
Hard Cost								
Maximum Allowable Construction Cost (MACC)	2	\$ 3,087,500	\$	-	\$	-	\$	-
Asbestos		\$ 58,705	\$	-	\$	-	\$	-
Seismic Retro Upgrade		-	\$	-	\$	-	\$	-
1.5% Solar (Total Project Major Building)		-	\$	-	\$	-	\$	-
Construction Contingency	2	\$ 162,500	\$	-	\$	-	\$	-
Construction Sub Total		\$ 3,308,705	\$	-	\$	-	\$	-
Soft Cost								
Administrative Cost								
Legal Fees		\$ 5,000	\$	-	\$	-	\$	-
Bond Counsel		-	\$	-	\$	-	\$	-
Bond Issuance Cost		-	\$	-	\$	-	\$	-
Builders Risk Insurance	3	-	\$	-	\$	-	\$	-
Project Management		\$ 99,261	\$	-	\$	-	\$	-
Reimbursable Expenses		\$ 6,617	\$	-	\$	-	\$	-
Communications		-	\$	-	\$	-	\$	-
Sustainability		-	\$	-	\$	-	\$	-
Site Cost								
Site Survey		-	\$	-	\$	-	\$	-
Geo-Tech Report		-	\$	-	\$	-	\$	-
Planning Cost								
Design Fees	2	\$ 363,958	\$	-	\$	-	\$	-
A & E Reimbursable Expenses	2	\$ 6,617	\$	-	\$	-	\$	-
Commissioning		-	\$	-	\$	-	\$	-
Printing & Plan Distribution		\$ 2,316	\$	-	\$	-	\$	-
Hazardous Materials Consultant	2	\$ 66,174	\$	-	\$	-	\$	-
Construction Testing		-	\$	-	\$	-	\$	-
Constructability Review		-	\$	-	\$	-	\$	-
Plan Review & Building Permits	2	\$ 39,704	\$	-	\$	-	\$	-
Special Inspection and Testing		-	\$	-	\$	-	\$	-
Miscellaneous Fees		-	\$	-	\$	-	\$	-
Ed Specs		-	\$	-	\$	-	\$	-
Kitchen		-	\$	-	\$	-	\$	-
Miscellaneous								
Legal Advertisements	2	\$ 1,323	\$	-	\$	-	\$	-
Furniture, Fixtures, and Equipment (FF&E)		-	\$	-	\$	-	\$	-
Technology		-	\$	-	\$	-	\$	-
Technology (Design)		-	\$	-	\$	-	\$	-
Acoustics		-	\$	-	\$	-	\$	-
Criminal Background Checks		\$ 662	\$	-	\$	-	\$	-
System Development Charges		-	\$	-	\$	-	\$	-
Value Engineering		-	\$	-	\$	-	\$	-
Utility Connection Fee		-	\$	-	\$	-	\$	-
Unallocated Owner Contingency	2	\$ 413,588	\$	-	\$	-	\$	-
Inflation		\$ 258,837	\$	-	\$	-	\$	-
Sub Total Soft Cost		\$ 1,264,057	\$	-	\$	-	\$	-
Total Project Cost		\$ 4,572,762	\$	-	\$	-	\$	-

1. Reallocated \$750,000 to AHS (07.31.21)
1. Reallocated \$641,400 to AHS (07.31.21)
1. Reallocated \$1,100,040 to AMS (07.31.21)
2. Reallocated \$ 684,164 to AHS (09.30.21)
3. Reallocated Bond Issuance Costs back to Program Level (06.30.22)



**ASHLAND SCHOOL DISTRICT
CAPITAL CONSTRUCTION
DW SECURITY BUDGET
JUNE 30, 2025**

Project Expense		Original Budget	Paid to Date	Remaining Balance	Revised Budget
Hard Cost					
Maximum Allowable Construction Cost (MACC)	10	\$ 2,850,000	\$ 299,527	\$ 7,415	\$ 306,942
Asbestos		\$ -	\$ -	\$ -	\$ -
Seismic Retro Upgrade		\$ -	\$ -	\$ -	\$ -
1.5% Solar (Total Project Major Building)		\$ -	\$ -	\$ -	\$ -
Construction Contingency		\$ 150,000	\$ -	\$ 137,207	\$ 137,207
Construction Sub Total		\$ 3,000,000	\$ 299,527	\$ 144,622	\$ 444,149
Soft Cost					
Administrative Cost					
Legal Fees		\$ 5,000	\$ -	\$ -	\$ -
Bond Counsel		\$ -	\$ -	\$ -	\$ -
Bond Issuance Cost		\$ -	\$ -	\$ -	\$ -
Builders Risk Insurance		\$ -	\$ -	\$ -	\$ -
Project Management		\$ 90,000	\$ -	\$ -	\$ -
Reimbursable Expenses		\$ 6,000	\$ -	\$ -	\$ -
Communications		\$ -	\$ -	\$ -	\$ -
Sustainability		\$ -	\$ -	\$ -	\$ -
Site Cost					
Site Survey		\$ 30,000	\$ -	\$ 30,000	\$ 30,000
Geo-Tech Report		\$ -	\$ -	\$ -	\$ -
Planning Cost					
Design Fees		\$ 210,000	\$ -	\$ 171,500	\$ 171,500
A & E Reimbursable Expenses		\$ 6,000	\$ -	\$ -	\$ -
Commissioning		\$ -	\$ -	\$ -	\$ -
Printing & Plan Distribution		\$ 2,100	\$ -	\$ -	\$ -
Hazardous Materials Consultant		\$ -	\$ -	\$ -	\$ -
Construction Testing		\$ -	\$ -	\$ -	\$ -
Constructability Review		\$ -	\$ -	\$ -	\$ -
Plan Review & Building Permits		\$ 30,000	\$ -	\$ 18,000	\$ 18,000
Special Inspection and Testing		\$ 21,000	\$ -	\$ 21,000	\$ 21,000
Miscellaneous Fees		\$ -	\$ -	\$ -	\$ -
Ed Specs		\$ -	\$ -	\$ -	\$ -
Kitchen		\$ -	\$ -	\$ -	\$ -
Miscellaneous					
Legal Advertisements		\$ 1,000	\$ -	\$ -	\$ -
Furniture, Fixtures, and Equipment (FF&E)		\$ -	\$ -	\$ -	\$ -
Technology		\$ -	\$ -	\$ -	\$ -
Technology (Design)		\$ 30,000	\$ -	\$ 27,000	\$ 27,000
Acoustics		\$ -	\$ -	\$ -	\$ -
Criminal Background Checks		\$ 500	\$ -	\$ -	\$ -
System Development Charges		\$ -	\$ -	\$ -	\$ -
Value Engineering		\$ -	\$ -	\$ -	\$ -
Utility Connection Fee		\$ -	\$ -	\$ -	\$ -
Unallocated Owner Contingency	6	\$ 375,000	\$ -	\$ 10,852	\$ 10,852
Inflation	7,8,9,10	\$ 228,396	\$ -	\$ 74,433	\$ 74,433
Sub Total Soft Cost		\$ 1,034,996	\$ -	\$ 352,785	\$ 352,785
Total Project Cost		\$ 4,034,996	\$ 299,527	\$ 497,407	\$ 796,934

1. Reallocated \$350,000 to new projects (transportation, bellview, maintenance, and district office)
2. Reallocated \$2,000,000 to AHS (09.30.21)
3. Reallocated Bond Issuance Costs back to Program Level (06.30.22)
4. Reallocated \$50k from Security to Transportation and \$40k to AMS (06.30.22)
5. Reallocated \$24k from Security to Maintenance (08.31.22)
6. Reallocated \$89k from Security to BES for Sentinel (03.31.23)
7. Reallocated \$26k from Security to AMS for Ednetics (03.31.23)
8. Reallocated \$24k from Security to Maintenance for Ednetics (03.31.23)
9. Reallocated \$17k from Security to Transportation for Ednetics(03.31.23)
10. Reallocated \$360k from Security to Program Level (04.30.23)



**ASHLAND SCHOOL DISTRICT
CAPITAL CONSTRUCTION
DW HVAC & MEP BUDGET
JUNE 30, 2025**

Project Expense		Original Budget		Paid to Date		Remaining Balance		Revised Budget
Hard Cost								
Maximum Allowable Construction Cost (MACC)	3	\$ 13,569,000	\$	-	\$	-	\$	-
Asbestos		\$ 257,742	\$	-	\$	-	\$	-
Seismic Retro Upgrade			\$	-	\$	-	\$	-
1.5% Solar (Total Project Major Building)			\$	-	\$	-	\$	-
Construction Contingency	3	\$ 856,140	\$	-	\$	-	\$	-
Construction Sub Total		\$ 14,682,882	\$	-	\$	-	\$	-
Soft Cost								
Administrative Cost								
Legal Fees		\$ 20,000	\$	-	\$	-	\$	-
Bond Counsel		\$ -	\$	-	\$	-	\$	-
Bond Issuance Cost		\$ -	\$	-	\$	-	\$	-
Builders Risk Insurance	5	\$ -	\$	-	\$	-	\$	-
Project Management		\$ 435,802	\$	-	\$	-	\$	-
Reimbursable Expenses		\$ 29,053	\$	-	\$	-	\$	-
Communications		\$ -	\$	-	\$	-	\$	-
Sustainability		\$ -	\$	-	\$	-	\$	-
Site Cost								
Site Survey		\$ -	\$	-	\$	-	\$	-
Geo-Tech Report		\$ -	\$	-	\$	-	\$	-
Planning Cost								
Design Fees	3	\$ 1,452,674	\$	-	\$	-	\$	-
A & E Reimbursable Expenses	3	\$ 29,053	\$	-	\$	-	\$	-
Commissioning	3	\$ 145,267	\$	-	\$	-	\$	-
Printing & Plan Distribution		\$ 5,000	\$	-	\$	-	\$	-
Hazardous Materials Consultant	3	\$ 72,634	\$	-	\$	-	\$	-
Construction Testing		\$ -	\$	-	\$	-	\$	-
Constructability Review	3	\$ 72,634	\$	-	\$	-	\$	-
Plan Review & Building Permits	3	\$ 145,267	\$	-	\$	-	\$	-
Special Inspection and Testing	3	\$ 29,053	\$	-	\$	-	\$	-
Miscellaneous Fees		\$ -	\$	-	\$	-	\$	-
Ed Specs		\$ -	\$	-	\$	-	\$	-
Kitchen		\$ -	\$	-	\$	-	\$	-
Miscellaneous								
Legal Advertisements		\$ 1,500	\$	-	\$	-	\$	-
Furniture, Fixtures, and Equipment (FF&E)		\$ -	\$	-	\$	-	\$	-
Technology		\$ -	\$	-	\$	-	\$	-
Technology (Design)		\$ 72,634	\$	-	\$	-	\$	-
Acoustics	3	\$ 36,317	\$	-	\$	-	\$	-
Criminal Background Checks		\$ 1,000	\$	-	\$	-	\$	-
System Development Charges		\$ -	\$	-	\$	-	\$	-
Value Engineering	3	\$ 72,634	\$	-	\$	-	\$	-
Utility Connection Fee	3	\$ 116,214	\$	-	\$	-	\$	-
Unallocated Owner Contingency	4	\$ 1,815,843	\$	-	\$	-	\$	-
Inflation	4	\$ 1,144,761	\$	-	\$	-	\$	-
Sub Total Soft Cost		\$ 5,697,340	\$	-	\$	-	\$	-
Total Project Cost		\$ 20,380,222	\$	-	\$	-	\$	-

2. Reallocated \$165,000 to AMS for HVAC upgrade (06.01.21)
3. Reallocated \$1,310,000 to AHS (07.01.21)
3. Reallocated \$7,100,000 to AHS -Phase II (07.01.21)
3. Reallocated \$475,000 to AHS -Phase II (07.01.21)
3. Reallocated \$972,316 to AHS -Phase II (07.01.21)
4. Reallocated \$486,606 to WES (02.28.22)
5. Reallocated Bond Issuance Costs back to Program Level (06.30.22)



**ASHLAND SCHOOL DISTRICT
CAPITAL CONSTRUCTION
DW TECHNOLOGY BUDGET
JUNE 30, 2025**

Project Expense		Original Budget	Paid to Date	Remaining Balance	Revised Budget
Hard Cost					
Maximum Allowable Construction Cost (MACC)	8/9	\$ 3,420,000	\$ 3,912,847	\$ (513,623)	\$ 3,399,224
Asbestos		\$ -	\$ -	\$ -	\$ -
Seismic Retro Upgrade		\$ -	\$ -	\$ -	\$ -
1.5% Solar (Total Project Major Building)		\$ -	\$ -	\$ -	\$ -
Construction Contingency		\$ 180,000	\$ -	\$ -	\$ -
Construction Sub Total		\$ 3,600,000	\$ 3,912,847	\$ (513,623)	\$ 3,399,224
Soft Cost					
Administrative Cost					
Legal Fees		\$ 5,000	\$ -	\$ -	\$ -
Bond Counsel		\$ -	\$ -	\$ -	\$ -
Bond Issuance Cost		\$ -	\$ -	\$ -	\$ -
Builders Risk Insurance		\$ -	\$ -	\$ -	\$ -
Project Management		\$ 108,000	\$ -	\$ -	\$ -
Reimbursable Expenses		\$ 7,200	\$ -	\$ -	\$ -
Communications		\$ -	\$ -	\$ -	\$ -
Sustainability		\$ -	\$ -	\$ -	\$ -
Site Cost					
Site Survey		\$ -	\$ -	\$ -	\$ -
Geo-Tech Report		\$ -	\$ -	\$ -	\$ -
Planning Cost					
Design Fees		\$ -	\$ -	\$ -	\$ -
A & E Reimbursable Expenses		\$ -	\$ -	\$ -	\$ -
Commissioning		\$ -	\$ -	\$ -	\$ -
Printing & Plan Distribution		\$ -	\$ -	\$ -	\$ -
Hazardous Materials Consultant		\$ -	\$ -	\$ -	\$ -
Construction Testing		\$ -	\$ -	\$ -	\$ -
Constructability Review		\$ -	\$ -	\$ -	\$ -
Plan Review & Building Permits	9	\$ 36,000	\$ -	\$ -	\$ -
Special Inspection and Testing		\$ -	\$ -	\$ -	\$ -
Miscellaneous Fees		\$ -	\$ -	\$ -	\$ -
Ed Specs		\$ -	\$ -	\$ -	\$ -
Kitchen		\$ -	\$ -	\$ -	\$ -
Miscellaneous					
Legal Advertisements	9	\$ 1,000	\$ -	\$ -	\$ -
Furniture, Fixtures, and Equipment (FF&E)		\$ -	\$ -	\$ -	\$ -
Technology		\$ -	\$ -	\$ -	\$ -
Technology (Design)	9	\$ 108,000	\$ 1,847	\$ (170)	\$ 1,677
Acoustics		\$ -	\$ -	\$ -	\$ -
Criminal Background Checks		\$ 1,000	\$ -	\$ -	\$ -
System Development Charges		\$ -	\$ -	\$ -	\$ -
Value Engineering		\$ -	\$ -	\$ -	\$ -
Utility Connection Fee		\$ -	\$ -	\$ -	\$ -
Unallocated Owner Contingency	6	\$ 360,000	\$ -	\$ -	\$ -
Inflation		\$ 253,572	\$ -	\$ -	\$ -
Sub Total Soft Cost		\$ 879,772	\$ 1,847	\$ (170)	\$ 1,677
Total Project Cost		\$ 4,479,772	\$ 3,914,694	\$ (513,793)	\$ 3,400,901

* Budget has been moved to the Project Level
 **Budget has been moved to the Program Level
 *** Re-allocated \$723,216 to Helman (05.31.20)
 +Budget has been moved to the Program Level (10.31.20)
 ^ Re-allocated \$223,636 to Program Level (11.30.20)
 1. Reallocated \$362,000 to AHS (09.30.21)
 2. Reallocated from Contingency (12.31.21)
 3. Reallocated from Contingency (03.31.22)
 4. Reallocated from Contingency (05.31.22)
 5. Reallocated Bond Issuance Costs back to Program Level (06.30.22)
 6. Reallocated costs to MACC (06.30.22)
 7. Reallocated from Invest Inc (08.31.22)
 8. Reallocated 300k from Invest Inc (09.30.22)
 9. Reallocated within Budget (09.30.22)



**ASHLAND SCHOOL DISTRICT
CAPITAL CONSTRUCTION
TRANSPORTATION BUDGET
JUNE 30, 2025**

Project Expense		Original Budget	Paid to Date	Remaining Balance	Revised Budget
Hard Cost					
Maximum Allowable Construction Cost (MACC)	8,10	\$ -	\$ 559,844	\$ 1	\$ 559,845
Asbestos		\$ -	\$ -	\$ -	\$ -
Seismic Retro Upgrade		\$ -	\$ -	\$ -	\$ -
1.5% Solar (Total Project Major Building)		\$ -	\$ -	\$ -	\$ -
Construction Contingency	8,10	\$ -	\$ -	\$ 1,652	\$ 1,652
Construction Sub Total		\$ -	\$ 559,844	\$ 1,653	\$ 561,497
Soft Cost					
Administrative Cost					
Legal Fees		\$ -	\$ -	\$ -	\$ -
Bond Counsel		\$ -	\$ -	\$ -	\$ -
Bond Issuance Cost		\$ -	\$ -	\$ -	\$ -
Builders Risk Insurance		\$ -	\$ -	\$ -	\$ -
Project Management		\$ -	\$ -	\$ -	\$ -
Reimbursable Expenses		\$ -	\$ -	\$ -	\$ -
Communications		\$ -	\$ -	\$ -	\$ -
Sustainability		\$ -	\$ -	\$ -	\$ -
Site Cost					
Site Survey		\$ -	\$ -	\$ -	\$ -
Geo-Tech Report		\$ -	\$ -	\$ -	\$ -
Planning Cost					
Design Fees		\$ -	\$ 32,860	\$ -	\$ 32,860
A & E Reimbursable Expenses		\$ -	\$ -	\$ -	\$ -
Commissioning		\$ -	\$ 19,501	\$ 499	\$ 20,000
Printing & Plan Distribution		\$ -	\$ -	\$ -	\$ -
Hazardous Materials Consultant	10	\$ -	\$ 8,850	\$ 0	\$ 8,850
Construction Testing		\$ -	\$ -	\$ -	\$ -
Constructability Review		\$ -	\$ -	\$ -	\$ -
Plan Review & Building Permits		\$ -	\$ 17,903	\$ 7,152	\$ 25,055
Special Inspection and Testing		\$ -	\$ -	\$ -	\$ -
Miscellaneous Fees	8	\$ -	\$ 4,388	\$ 613	\$ 5,000
Ed Specs		\$ -	\$ -	\$ -	\$ -
Kitchen		\$ -	\$ -	\$ -	\$ -
Miscellaneous					
Legal Advertisements		\$ -	\$ 407	\$ 0	\$ 407
Furniture, Fixtures, and Equipment (FF&E)		\$ -	\$ 7,631	\$ 17,369	\$ 25,000
Technology	9	\$ -	\$ 16,822	\$ 178	\$ 17,000
Technology (Design)		\$ -	\$ -	\$ -	\$ -
Acoustics		\$ -	\$ -	\$ -	\$ -
Criminal Background Checks		\$ -	\$ -	\$ -	\$ -
System Development Charges		\$ -	\$ -	\$ -	\$ -
Value Engineering		\$ -	\$ -	\$ -	\$ -
Utility Connection Fee		\$ -	\$ -	\$ -	\$ -
Unallocated Owner Contingency	8	\$ -	\$ -	\$ -	\$ -
Inflation		\$ -	\$ -	\$ -	\$ -
Sub Total Soft Cost		\$ -	\$ 108,361	\$ 25,812	\$ 134,172
Total Project Cost		\$ -	\$ 668,205	\$ 27,465	\$ 695,669

1. Reallocated from DW Security and HVAC (04.18.21)
2. Reallocated within Budget(12.31.21)
3. Reallocated to Maintenance Bldg (02.28.22)
4. Reallocated to Maintenance Bldg (03.31.22)
5. Reallocated within Budget (05.31.22)
6. Reallocated \$50k from Security to Transportation (06.30.22)
7. Reallocated within Budget (08.31.22)
8. Reallocated within Budget (09.30.22)
9. Reallocated from Security (03.31.23)



**ASHLAND SCHOOL DISTRICT
CAPITAL CONSTRUCTION
BELLVIEW BUDGET
JUNE 30, 2025**

Project Expense		Original Budget	Paid to Date	Remaining Balance	Revised Budget
Hard Cost					
Maximum Allowable Construction Cost (MACC)	6	\$ -	\$ 352,879	\$ 54,763	\$ 407,642
Asbestos		\$ -	\$ -	\$ -	\$ -
Seismic Retro Upgrade		\$ -	\$ -	\$ -	\$ -
1.5% Solar (Total Project Major Building)		\$ -	\$ -	\$ -	\$ -
Phase 2	5,6	\$ -	\$ 1,237,830	\$ 51,810	\$ 1,289,640
Construction Contingency	6	\$ -	\$ -	\$ 144,186	\$ 144,186
Construction Sub Total		\$ -	\$ 1,590,709	\$ 250,759	\$ 1,841,468
Soft Cost					
Administrative Cost					
Legal Fees		\$ -	\$ -	\$ -	\$ -
Bond Counsel		\$ -	\$ -	\$ -	\$ -
Bond Issuance Cost		\$ -	\$ -	\$ -	\$ -
Builders Risk Insurance		\$ -	\$ -	\$ -	\$ -
Project Management		\$ -	\$ -	\$ -	\$ -
Reimbursable Expenses		\$ -	\$ -	\$ -	\$ -
Communications		\$ -	\$ -	\$ -	\$ -
Sustainability		\$ -	\$ -	\$ -	\$ -
Site Cost					
Site Survey	4	\$ -	\$ 2,270	\$ -	\$ 2,270
Geo-Tech Report		\$ -	\$ -	\$ -	\$ -
Planning Cost					
Design Fees	4,7	\$ -	\$ 55,927	\$ (7,234)	\$ 48,693
A & E Reimbursable Expenses		\$ -	\$ -	\$ 5,000	\$ 5,000
Commissioning	4,7	\$ -	\$ 141,992	\$ (18,992)	\$ 123,000
Printing & Plan Distribution	7	\$ -	\$ -	\$ -	\$ -
Hazardous Materials Consultant		\$ -	\$ 4,540	\$ 460	\$ 5,000
Construction Testing		\$ -	\$ -	\$ -	\$ -
Constructability Review		\$ -	\$ -	\$ -	\$ -
Plan Review & Building Permits		\$ -	\$ 8,508	\$ 21,405	\$ 29,913
Special Inspection and Testing		\$ -	\$ -	\$ -	\$ -
Miscellaneous Fees		\$ -	\$ 32,270	\$ (13,270)	\$ 19,000
Ed Specs		\$ -	\$ -	\$ -	\$ -
Kitchen		\$ -	\$ -	\$ -	\$ -
Miscellaneous					
Legal Advertisements		\$ -	\$ 404	\$ 2,096	\$ 2,500
Furniture, Fixtures, and Equipment (FF&E)		\$ -	\$ -	\$ -	\$ -
Technology		\$ -	\$ -	\$ -	\$ -
Technology (Design)		\$ -	\$ -	\$ -	\$ -
Acoustics		\$ -	\$ -	\$ -	\$ -
Criminal Background Checks		\$ -	\$ -	\$ -	\$ -
System Development Charges		\$ -	\$ -	\$ -	\$ -
Value Engineering		\$ -	\$ -	\$ -	\$ -
Utility Connection Fee		\$ -	\$ -	\$ -	\$ -
Unallocated Owner Contingency	4,7	\$ -	\$ -	\$ -	\$ -
Inflation		\$ -	\$ -	\$ -	\$ -
Sub Total Soft Cost		\$ -	\$ 245,912	\$ (10,536)	\$ 235,376
Total Project Cost		\$ -	\$ 1,836,621	\$ 240,223	\$ 2,076,844

1. Reallocated from DW Security and HVAC (04.18.21)
2. Reallocate within budget (12.31.21)
3. Reallocate within budget (06.30.22)
4. Reallocate within budget (09.30.22)
5. Reallocate from Premium and DW Security (03.31.23)



**ASHLAND SCHOOL DISTRICT
CAPITAL CONSTRUCTION
MAINTENANCE BLDG BUDGET
JUNE 30, 2025**

Project Expense		Original Budget	Paid to Date	Remaining Balance	Revised Budget
Hard Cost					
Maximum Allowable Construction Cost (MACC)		\$ -	\$ 653,092	\$ -	\$ 653,092
Security Fencing	7,10	\$ -	\$ 23,890	\$ -	\$ 23,890
Seismic Retro Upgrade		\$ -	\$ -	\$ -	\$ -
1.5% Solar (Total Project Major Building)		\$ -	\$ -	\$ -	\$ -
Construction Contingency	10	\$ -	\$ -	\$ 17,724	\$ 17,724
Construction Sub Total		\$ -	\$ 676,982	\$ 17,724	\$ 694,706
Soft Cost					
Administrative Cost					
Legal Fees		\$ -	\$ -	\$ -	\$ -
Bond Counsel		\$ -	\$ -	\$ -	\$ -
Bond Issuance Cost		\$ -	\$ -	\$ -	\$ -
Builders Risk Insurance		\$ -	\$ -	\$ -	\$ -
Project Management		\$ -	\$ -	\$ -	\$ -
Reimbursable Expenses		\$ -	\$ -	\$ -	\$ -
Communications		\$ -	\$ -	\$ -	\$ -
Sustainability		\$ -	\$ -	\$ -	\$ -
Site Cost					
Site Survey		\$ -	\$ -	\$ -	\$ -
Geo-Tech Report		\$ -	\$ -	\$ -	\$ -
Planning Cost					
Design Fees	6	\$ -	\$ 28,850	\$ 155	\$ 29,005
A & E Reimbursable Expenses		\$ -	\$ -	\$ 5,000	\$ 5,000
Commissioning		\$ -	\$ 22,501	\$ 2,499	\$ 25,000
Printing & Plan Distribution		\$ -	\$ -	\$ -	\$ -
Hazardous Materials Consultant		\$ -	\$ 7,500	\$ -	\$ 7,500
Construction Testing		\$ -	\$ -	\$ -	\$ -
Constructability Review		\$ -	\$ -	\$ -	\$ -
Plan Review & Building Permits	8	\$ -	\$ 34,313	\$ 197	\$ 34,510
Special Inspection and Testing		\$ -	\$ -	\$ -	\$ -
Miscellaneous Fees	6	\$ -	\$ 6,855	\$ 1,445	\$ 8,300
Ed Specs		\$ -	\$ -	\$ -	\$ -
Kitchen		\$ -	\$ -	\$ -	\$ -
Miscellaneous					
Legal Advertisements		\$ -	\$ 407	\$ 1,593	\$ 2,000
Furniture, Fixtures, and Equipment (FF&E)		\$ -	\$ -	\$ -	\$ -
Technology	8,9	\$ -	\$ 23,801	\$ 199	\$ 24,000
Technology (Design)		\$ -	\$ -	\$ -	\$ -
Acoustics		\$ -	\$ -	\$ -	\$ -
Criminal Background Checks		\$ -	\$ -	\$ -	\$ -
System Development Charges		\$ -	\$ -	\$ -	\$ -
Value Engineering		\$ -	\$ -	\$ -	\$ -
Utility Connection Fee		\$ -	\$ -	\$ -	\$ -
Unallocated Owner Contingency	6	\$ -	\$ -	\$ 26,735	\$ 26,735
Inflation		\$ -	\$ -	\$ -	\$ -
Sub Total Soft Cost		\$ -	\$ 124,227	\$ 37,823	\$ 162,050
Total Project Cost		\$ -	\$ 801,209	\$ 55,547	\$ 856,756

1. Reallocated from DW Security and HVAC (04.18.21)
2. Reallocated from Transportation (02.28.22)
3. Reallocated within Budget (02.28.22)
4. Reallocated within Budget (03.31.22)
5. Reallocated within Budget (05.31.22)
6. Reallocated within Budget (06.30.22)
7. Reallocated from Safety and Security (08.31.22)
8. Reallocate from investment income (09.30.22)
9. Reallocate 24k from Security (01.31.23)

Intentionally left blank. Do not delete!



**ASHLAND SCHOOL DISTRICT
CAPITAL CONSTRUCTION
HELMAN ELEMENTARY SCHOOL BUDGET
JUNE 30, 2025**

Project Expense		Original Budget	Paid to Date	Remaining Balance	Revised Budget
Hard Cost					
Maximum Allowable Construction Cost (MACC)	13	\$ 10,576,000	\$ 15,367,756	\$ (232,685)	\$ 15,135,071
Asbestos		\$ 189,259		\$ -	\$ -
Seismic Retro Upgrade				\$ -	
1.5% Solar (Total Project Major Building)				\$ -	\$ -
Construction Contingency	13	\$ 528,825	\$ -	\$ -	\$ -
Construction Sub Total		\$ 11,294,084	\$ 15,367,756	\$ (232,685)	\$ 15,135,071
Soft Cost					
Administrative Cost					
Legal Fees		\$ 15,000	\$ -	\$ -	\$ -
Bond Counsel		\$ -	\$ -	\$ -	\$ -
Bond Issuance Cost		\$ -	\$ -	\$ -	\$ -
Builders Risk Insurance		\$ -	\$ 10,869	\$ 131	\$ 11,000
Project Management		\$ 338,823	\$ -	\$ -	\$ -
Reimbursable Expenses		\$ 22,588	\$ -	\$ -	\$ -
Communications		\$ -	\$ -	\$ -	\$ -
Sustainability		\$ -	\$ -	\$ -	\$ -
Site Cost					
Site Survey		\$ 22,588	\$ 16,151	\$ -	\$ 16,151
Geo-Tech Report		\$ 33,882	\$ 22,170	\$ 30	\$ 22,200
Planning Cost					
Design Fees	13	\$ 1,129,408	\$ 1,213,367	\$ 0	\$ 1,213,367
A & E Reimbursable Expenses		\$ 22,588	\$ 271	\$ 0	\$ 271
Commissioning		\$ 56,470	\$ 42,420	\$ 1,000	\$ 43,420
Printing & Plan Distribution		\$ 2,500	\$ -	\$ -	\$ -
Hazardous Materials Consultant	13	\$ 56,470	\$ 79,820	\$ 13,200	\$ 93,020
Constructability Review		\$ 56,470	\$ 75,000	\$ 470	\$ 75,470
Plan Review & Building Permits		\$ 112,941	\$ 640,326	\$ 8,448	\$ 648,774
Special Inspection and Testing		\$ 79,059	\$ 144,118	\$ 38,102	\$ 182,220
Miscellaneous Fees	13,14	\$ 45,176	\$ 99,456	\$ 1,978	\$ 101,434
Ed Specs		\$ 22,588	\$ -	\$ -	\$ -
Kitchen		\$ -	\$ -	\$ -	\$ -
Miscellaneous					
Legal Advertisements		\$ 2,000	\$ -	\$ -	\$ -
Furniture, Fixtures, and Equipment (FF&E)		\$ 564,704	\$ 586,301	\$ (3,362)	\$ 582,939
Technology		\$ 112,941	\$ -	\$ -	\$ -
Technology (Design)		\$ 56,470	\$ 5,404	\$ 96	\$ 5,500
Acoustics		\$ 16,941	\$ -	\$ -	\$ -
Criminal Background Checks		\$ 2,000	\$ -	\$ -	\$ -
System Development Charges	13,14	\$ 112,941	\$ -	\$ -	\$ -
Value Engineering		\$ 56,470	\$ -	\$ -	\$ -
Utility Connection Fee		\$ -	\$ -	\$ -	\$ -
Unallocated Owner Contingency		\$ 1,129,408	\$ -	\$ -	\$ -
Inflation		\$ 921,871	\$ -	\$ -	\$ -
Sub Total Soft Cost		\$ 4,992,297	\$ 2,935,673	\$ 60,093	\$ 2,995,766
Total Project Cost		\$ 16,286,381	\$ 18,303,429	\$ (172,592)	\$ 18,130,837

- 12. ReAllocated within Budget (09.30.22)
- 13. ReAllocated within Budget (01.31.23)
- 14. Costs were recategorized (04.30.23)



**ASHLAND SCHOOL DISTRICT
CAPITAL CONSTRUCTION
WALKER ELEMENTARY SCHOOL BUDGET
JUNE 30, 2025**

Project Expense		Original Budget	Paid to Date	Remaining Balance	Revised Budget
Hard Cost					
Maximum Allowable Construction Cost (MACC)	15	\$ 8,533,000	\$ 26,829,423	\$ 197,268	\$ 27,026,691
Asbestos		\$ 42,535	\$ -	\$ -	\$ -
Seismic Retro Upgrade		\$ 2,250,000	\$ 1,535,626	\$ 77,795	\$ 1,613,421
Science Works		\$ -	\$ 88,667	\$ 333	\$ 89,000
Modular Rental		\$ -	\$ 1,676,661	\$ (188,236)	\$ 1,488,425
Construction Contingency	15	\$ 426,650	\$ -	\$ (0)	\$ (0)
Construction Sub Total		\$ 11,252,185	\$ 30,130,377	\$ 87,160	\$ 30,217,537
Soft Cost					
Administrative Cost					
Legal Fees		\$ 15,000	\$ -	\$ -	\$ -
Bond Counsel		\$ -	\$ -	\$ -	\$ -
Bond Issuance Cost		\$ -	\$ -	\$ -	\$ -
Builders Risk Insurance	14	\$ -	\$ 69,257	\$ (8,057)	\$ 61,200
Project Management		\$ 270,066	\$ -	\$ -	\$ -
Reimbursable Expenses		\$ 18,004	\$ -	\$ -	\$ -
Communications		\$ -	\$ -	\$ -	\$ -
Sustainability		\$ -	\$ -	\$ -	\$ -
Site Cost					
Site Survey		\$ 90,022	\$ 28,177	\$ 1,637	\$ 29,814
Geo-Tech Report		\$ 18,004	\$ 26,462	\$ (0)	\$ 26,462
Planning Cost					
Design Fees	14	\$ 1,150,218	\$ 1,986,657	\$ (19,165)	\$ 1,967,492
A & E Reimbursable Expenses		\$ 18,004	\$ 415	\$ 17,589	\$ 18,004
Commissioning		\$ 45,011	\$ 92,144	\$ (18,259)	\$ 73,885
Printing & Plan Distribution		\$ 2,000	\$ 945	\$ 55	\$ 1,000
Hazardous Materials Consultant		\$ 90,022	\$ 147,085	\$ 4,537	\$ 151,622
Construction Testing		\$ -	\$ -	\$ -	\$ -
Constructability Review		\$ 45,011	\$ 75,000	\$ -	\$ 75,000
Plan Review & Building Permits		\$ 90,022	\$ 892,242	\$ 4,718	\$ 896,960
Special Inspection and Testing	14	\$ 63,015	\$ 139,809	\$ (26,719)	\$ 113,090
Miscellaneous Fees	16,17	\$ 36,009	\$ 418,679	\$ (132,529)	\$ 286,150
Ed Specs		\$ 18,004	\$ -	\$ -	\$ -
Kitchen		\$ -	\$ -	\$ -	\$ -
Miscellaneous					
Legal Advertisements		\$ 2,000	\$ -	\$ -	\$ -
Furniture, Fixtures, and Equipment (FF&E)	14	\$ 450,109	\$ 868,562	\$ 3,338	\$ 871,900
Technology	14	\$ 90,022	\$ 238,419	\$ 4,202	\$ 242,621
Technology (Design)		\$ 45,011	\$ -	\$ -	\$ -
Acoustics		\$ 13,503	\$ -	\$ -	\$ -
Criminal Background Checks		\$ 1,200	\$ -	\$ -	\$ -
System Development Charges	16	\$ -	\$ -	\$ -	\$ -
Value Engineering		\$ -	\$ -	\$ -	\$ -
Utility Connection Fee		\$ -	\$ -	\$ -	\$ -
Unallocated Owner Contingency		\$ 1,125,273	\$ -	\$ -	\$ -
Inflation		\$ 746,863	\$ -	\$ -	\$ -
Sub Total Soft Cost		\$ 4,442,393	\$ 4,983,854	\$ (168,653)	\$ 4,815,200
Total Project Cost		\$ 15,694,578	\$ 35,114,231	\$ (81,494)	\$ 35,032,737

- 10. Reallocated Bond Issuance Costs back to Program Level (06.30.22)
- 11. Reallocated within Budget (06.30.22)
- 12. Reallocated within Budget (08.31.22)
- 13. Increase budget with Investment Income (08.31.22)
- 14. Increase budget with Investment Income (03.31.23)
- 15. Reallocated within Budget (03.31.23)
- 16. Costs were recategorized (04.30.23)
- 17. Reallocated within Budget (04.30.23)



**ASHLAND SCHOOL DISTRICT
CAPITAL CONSTRUCTION
ASHLAND MIDDLE SCHOOL BUDGET
JUNE 30, 2025**

Project Expense		Original Budget	Paid to Date	Remaining Balance	Revised Budget
Hard Cost					
Maximum Allowable Construction Cost (MACC)	18	\$ 20,500,000	\$ 35,813,522	\$ (366,146)	\$ 35,447,376
Asbestos		\$ 384,870	\$ -	\$ -	\$ -
Seismic Retro Upgrade		\$ -	\$ -	\$ -	\$ -
1.5% Solar (Total Project Major Building)		\$ -	\$ -	\$ -	\$ -
Construction Contingency		\$ 1,075,400	\$ -	\$ 0	\$ 0
Construction Sub Total		\$ 21,960,270	\$ 35,813,522	\$ (366,146)	\$ 35,447,376
Soft Cost					
Administrative Cost					
Legal Fees		\$ 20,000	\$ -	\$ -	\$ -
Bond Counsel		\$ -	\$ -	\$ -	\$ -
Bond Issuance Cost		\$ -	\$ -	\$ -	\$ -
Builders Risk Insurance		\$ -	\$ -	\$ -	\$ -
Project Management		\$ 658,808	\$ -	\$ -	\$ -
Reimbursable Expenses		\$ 43,921	\$ -	\$ -	\$ -
Communications		\$ -	\$ -	\$ -	\$ -
Sustainability		\$ -	\$ -	\$ -	\$ -
Site Cost					
Site Survey	17	\$ 43,921	\$ 24,226	\$ 690	\$ 24,916
Geo-Tech Report		\$ 43,921	\$ 37,264	\$ 2,736	\$ 40,000
Planning Cost					
Design Fees		\$ 2,196,027	\$ 2,359,606	\$ 83,084	\$ 2,442,690
A & E Reimbursable Expenses		\$ 43,921	\$ 34,400	\$ 35,600	\$ 70,000
Commissioning		\$ 87,841	\$ 53,220	\$ -	\$ 53,220
Printing & Plan Distribution		\$ 15,372	\$ -	\$ -	\$ -
Hazardous Materials Consultant		\$ 87,841	\$ 149,293	\$ 2,057	\$ 151,350
Construction Testing		\$ -	\$ -	\$ -	\$ -
Constructability Review		\$ 65,881	\$ 88,403	\$ -	\$ 88,403
Plan Review & Building Permits		\$ 219,603	\$ 1,127,525	\$ 186	\$ 1,127,711
Special Inspection and Testing		\$ 153,722	\$ 115,193	\$ 3,749	\$ 118,942
Miscellaneous Fees	17	\$ 87,841	\$ 300,136	\$ (20,886)	\$ 279,250
Ed Specs		\$ 32,940	\$ -	\$ -	\$ -
Kitchen		\$ 32,940	\$ -	\$ -	\$ -
Miscellaneous					
Legal Advertisements		\$ 2,000	\$ -	\$ -	\$ -
Furniture, Fixtures, and Equipment (FF&E)		\$ 1,098,014	\$ 1,154,444	\$ (4,444)	\$ 1,150,000
Technology	16	\$ 109,801	\$ 56,821	\$ 15,964	\$ 72,785
Technology (Design)		\$ 109,801	\$ -	\$ -	\$ -
Acoustics		\$ 32,940	\$ -	\$ -	\$ -
Criminal Background Checks		\$ 2,000	\$ -	\$ -	\$ -
System Development Charges		\$ 219,603	\$ 4,350	\$ (600)	\$ 3,750
Value Engineering		\$ 65,881	\$ -	\$ -	\$ -
Utility Connection Fee		\$ -	\$ -	\$ -	\$ -
Unallocated Owner Contingency		\$ 2,745,034	\$ -	\$ -	\$ -
Inflation		\$ 1,810,791	\$ -	\$ -	\$ -
Sub Total Soft Cost		\$ 10,030,365	\$ 5,504,880	\$ 118,137	\$ 5,623,017
Total Project Cost		\$ 31,990,635	\$ 41,318,402	\$ (248,009)	\$ 41,070,393

- 15. Reallocated within Budget (01.31.23)
- 16. Reallocated \$26k from Security (03.31.23)
- 17. Reallocated within Budget (05.31.23)
- 18. Reallocated from Investment Inc (06.30.23)



**ASHLAND SCHOOL DISTRICT
CAPITAL CONSTRUCTION
WILLOW WIND LEARNING CENTER
JUNE 30, 2025**

Project Expense		Original Budget	Paid to Date	Remaining Balance	Revised Budget
Hard Cost					
Maximum Allowable Construction Cost (MACC)	4,8	\$ -	\$ 1,732,696	\$ 1,732	\$ 1,734,428
Other Contractor Costs		\$ -	\$ -	\$ -	\$ -
		\$ -	\$ -	\$ -	\$ -
		\$ -	\$ -	\$ -	\$ -
Construction Contingency		\$ -	\$ -	\$ -	\$ -
Construction Sub Total		\$ -	\$ 1,732,696	\$ 1,732	\$ 1,734,428
Soft Cost					
Administrative Cost					
Legal Fees		\$ -	\$ -	\$ -	\$ -
Bond Counsel		\$ -	\$ -	\$ -	\$ -
Bond Issuance Cost		\$ -	\$ -	\$ -	\$ -
Builders Risk Insurance		\$ -	\$ -	\$ -	\$ -
Project Management		\$ -	\$ -	\$ -	\$ -
Reimbursable Expenses		\$ -	\$ -	\$ -	\$ -
Communications		\$ -	\$ -	\$ -	\$ -
Sustainability		\$ -	\$ -	\$ -	\$ -
Site Cost					
Site Survey		\$ -	\$ -	\$ -	\$ -
Geo-Tech Report		\$ -	\$ -	\$ -	\$ -
Planning Cost					
Design Fees	5	\$ -	\$ 128,412	\$ (351)	\$ 128,061
A & E Reimbursable Expenses		\$ -	\$ -	\$ -	\$ -
Commissioning		\$ -	\$ 21,500	\$ 284	\$ 21,784
Printing & Plan Distribution		\$ -	\$ -	\$ -	\$ -
Hazardous Materials Consultant		\$ -	\$ 10,894	\$ -	\$ 10,894
Construction Testing		\$ -	\$ -	\$ -	\$ -
Constructability Review		\$ -	\$ -	\$ -	\$ -
Plan Review & Building Permits		\$ -	\$ 37,164	\$ (1,844)	\$ 35,320
Special Inspection and Testing		\$ -	\$ 3,833	\$ 0	\$ 3,833
Miscellaneous Fees	6,7	\$ -	\$ 54,272	\$ 3,994	\$ 58,266
Ed Specs		\$ -	\$ -	\$ -	\$ -
Kitchen		\$ -	\$ -	\$ -	\$ -
Miscellaneous					
Legal Advertisements		\$ -	\$ -	\$ -	\$ -
Furniture, Fixtures, and Equipment (FF&E)		\$ -	\$ 8,535	\$ 465	\$ 9,000
Technology		\$ -	\$ -	\$ -	\$ -
Technology (Design)		\$ -	\$ -	\$ -	\$ -
Acoustics		\$ -	\$ -	\$ -	\$ -
Criminal Background Checks		\$ -	\$ -	\$ -	\$ -
System Development Charges		\$ -	\$ 15,342	\$ -	\$ 15,342
Value Engineering		\$ -	\$ -	\$ -	\$ -
Utility Connection Fee		\$ -	\$ -	\$ -	\$ -
Unallocated Owner Contingency	5	\$ -	\$ -	\$ -	\$ -
Inflation		\$ -	\$ -	\$ -	\$ -
Sub Total Soft Cost		\$ -	\$ 279,952	\$ 2,548	\$ 282,500
Total Project Cost		\$ -	\$ 2,012,648	\$ 4,280	\$ 2,016,928

- 2. ReAllocated costs within budget (08.01.21)
- 2. ReAllocated costs within budget (08.01.21)
- 3. \$79,500 moved to WES (12.31.21)
- 4. ReAllocated costs within budget (03.31.22)
- 5. ReAllocated costs within budget (08.31.22)
- 6. ReAllocated costs from Investment Inc (09.30.22)
- 7. ReAllocated costs from Investment Inc (05.31.23)



**ASHLAND SCHOOL DISTRICT
CAPITAL CONSTRUCTION
DISTRICT WIDE SOLAR PROJECT
JUNE 30, 2025**

Project Expense	Original Budget	Paid to Date	Remaining Balance	Revised Budget
Hard Cost				
1.5% Solar (Walker Elementary)	\$ -	\$ 280,779	\$ 1,619	\$ 282,398
1.5% Solar (Helman Elementary)	\$ -	\$ 250,000	\$ -	\$ 250,000
1.5% Solar (Ashland Middle School)	2,3,4 \$ -	\$ 401,106	\$ 17,294	\$ 418,400
1.5% Solar (Ashland High School)	\$ -	\$ -	\$ 200,000	\$ 200,000
1.5% Solar (Willow Wind Learning Center)	\$ -	\$ -	\$ -	\$ -
Construction Contingency	1,5 \$ -	\$ -	\$ 500,000	\$ 500,000
Construction Sub Total	\$ -	\$ 931,886	\$ 718,912	\$ 1,650,798
Soft Cost				
Administrative Cost				
Legal Fees	\$ -	\$ -	\$ -	\$ -
Bond Counsel	\$ -	\$ -	\$ -	\$ -
Bond Issuance Cost	\$ -	\$ -	\$ -	\$ -
Builders Risk Insurance	\$ -	\$ -	\$ -	\$ -
Project Management	\$ -	\$ -	\$ -	\$ -
Reimbursable Expenses	\$ -	\$ -	\$ -	\$ -
Communications	\$ -	\$ -	\$ -	\$ -
Sustainability	\$ -	\$ -	\$ -	\$ -
Site Cost				
Site Survey	3 \$ -	\$ 13,100	\$ (9,100)	\$ 4,000
Geo-Tech Report	\$ -	\$ -	\$ -	\$ -
Planning Cost				
Design Fees	2,3,4 \$ -	\$ 80,100	\$ (10,500)	\$ 69,600
A & E Reimbursable Expenses	\$ -	\$ -	\$ -	\$ -
Commissioning	\$ -	\$ -	\$ -	\$ -
Printing & Plan Distribution	\$ -	\$ -	\$ -	\$ -
Hazardous Materials Consultant	\$ -	\$ -	\$ -	\$ -
Construction Testing	\$ -	\$ -	\$ -	\$ -
Constructability Review	\$ -	\$ -	\$ -	\$ -
Plan Review & Building Permits	3,4,5 \$ -	\$ 43,827	\$ 14,173	\$ 58,000
Special Inspection and Testing	\$ -	\$ -	\$ -	\$ -
Miscellaneous Fees	\$ -	\$ 1,989	\$ (1,989)	\$ -
Ed Specs	\$ -	\$ -	\$ -	\$ -
Kitchen	\$ -	\$ -	\$ -	\$ -
Miscellaneous				
Legal Advertisements	\$ -	\$ -	\$ -	\$ -
Furniture, Fixtures, and Equipment (FF&E)	\$ -	\$ -	\$ -	\$ -
Technology	\$ -	\$ -	\$ -	\$ -
Technology (Design)	\$ -	\$ -	\$ -	\$ -
Acoustics	\$ -	\$ -	\$ -	\$ -
Criminal Background Checks	\$ -	\$ -	\$ -	\$ -
System Development Charges	\$ -	\$ -	\$ -	\$ -
Value Engineering	\$ -	\$ -	\$ -	\$ -
Utility Connection Fee	\$ -	\$ -	\$ -	\$ -
Unallocated Owner Contingency	\$ -	\$ -	\$ -	\$ -
Inflation	\$ -	\$ -	\$ -	\$ -
Sub Total Soft Cost	\$ -	\$ 139,016	\$ (7,416)	\$ 131,600
Total Project Cost	\$ -	\$ 1,070,902	\$ 711,496	\$ 1,782,398

- 1. ReAllocated from Investment Inc (09.30.22) \$1,897,106
- 2. ReAllocated within Budget (09.30.22) \$ (114,708.00)
- 3. ReAllocated within Budget (04.30.23)
- 4. ReAllocated within Budget (06.30.23)



Ashland
SCHOOLS
FOUNDATION



\$



\$



66

Grants for your classroom!

About You

Please complete this form to apply for Impact Grant funds. We want the process to be accessible and minimally disruptive to your workflow. Please provide as much information as is necessary to make your goals clear to the review committee. Brevity is okay, so long as we understand your needs and the impact of your concept. Remember to dream big! If ASF is unable to fulfill your entire request, it is possible we may be able to offer partial funding or even suggest alternative funding sources. Reach out to Erica at any time with questions about the application or review process at erica@ashlandschoolsfoundation.org

First Name *

Last Name *

Email *

Direct Phone Number *

What do your students call you? *

(i.e., "Mr. B," "Ms. Frizzle", etc.)

Please list any other teachers or staff members who are directly involved in this grant.

Please include full name(s) and email address(es) (Optional)

What subject(s) does this grant address? *

(Select all that apply)

- Arts
- Economics
- Health/Physical Education
- Language Arts/Reading
- Math
- Science/Technology/Measurement

67



APPLY HERE

The 2025-26 Grant Season is now open!

Updates and reminders will be sent via email to all district staff. Please read all FAQ's below before submitting an application.

[SUBMIT GRANT APPLICATION](#)

Impact Grant Applications

There are three deadlines this school year. Applications may be submitted at any time and will be reviewed and awarded approximately two weeks following each deadline.

68

Monday, September 15 at 11:59pm

Monday, November 10 at 11:59pm

Monday, February 2 at 11:59pm



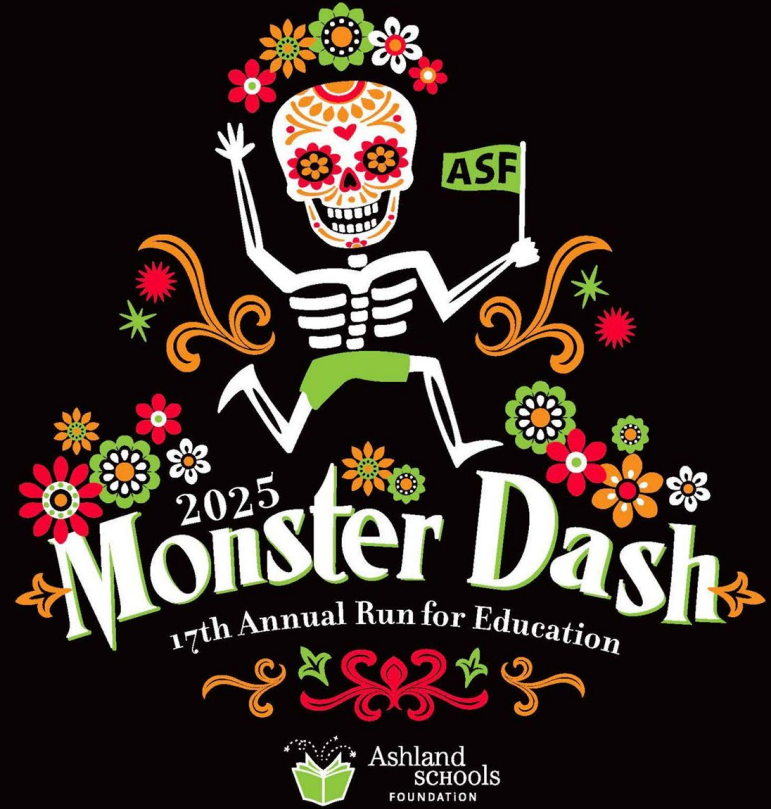


Fundraising for your
classroom!



Saturday,
October 25

- Register to Run/Walk
 - (\$5 off for ASD!)
- Volunteer
- www.ashlandmonsterdash.com

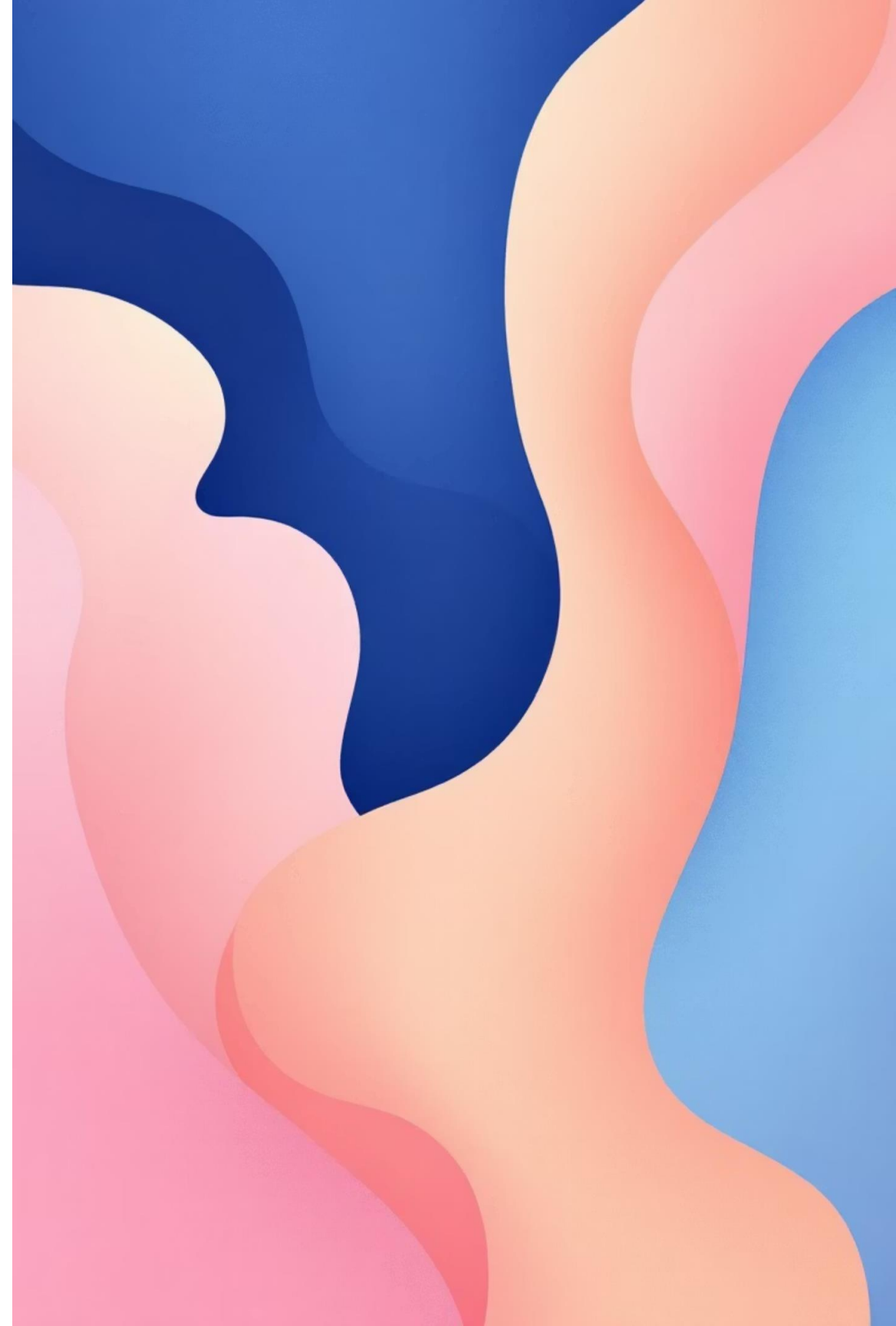




Ashland
SCHOOLS
FOUNDATION.org

Ashland 2024-25 Annual Progress Reflection

A look at our district's progress, challenges, and next steps as we work for a safe, supportive, and inclusive learning environment.



Financial Breakdown by Funding Source

A comprehensive look at allocations, expenditures, and remaining balances across our key funding sources, highlighting how funds are managed to support district priorities.

Funding Source	Total Allocation	Budgeted Amount	Total Spent	EGMS Claimed	Unspent
EIIS	\$7,594.83	\$7,594.83	\$7,594.83	\$7,594.83	\$0.00
HSS	\$749,831.21	\$749,831.21	\$759,600.91	\$749,831.21	\$0.00
SIA	\$2,515,593.24	\$2,389,593.24	\$2,515,593.24	\$2,515,593.24	\$0.00

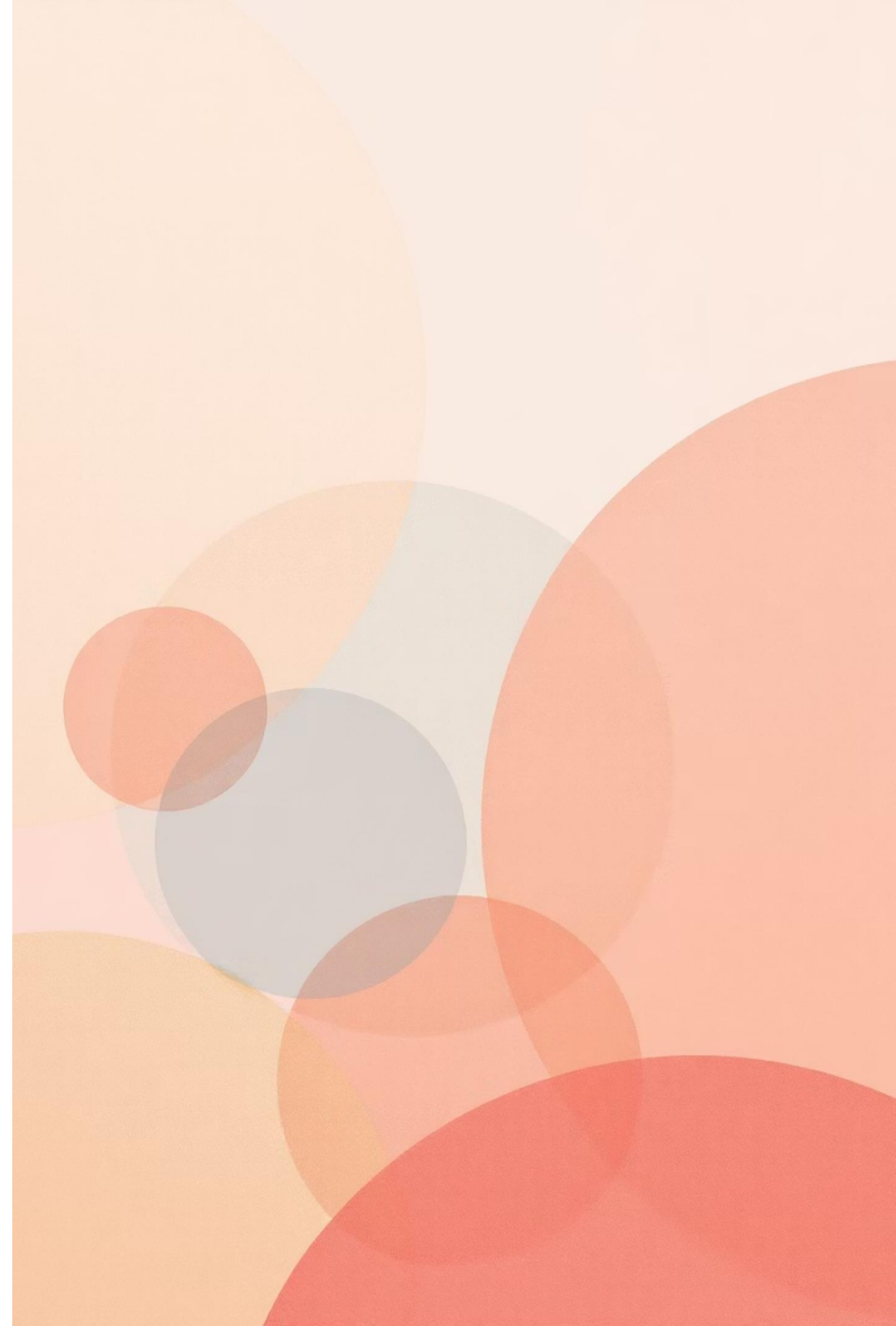
Early Literacy Financial Summary

23.24 Carry Over: (\$149,651.76) **24.25 Award:** (\$176,686.44) **Expense:** \$326,338.20

Total Balance: \$326,338.20 **Adjusted Balance:** (\$326,338.20)

Intentional Progress Toward Key Outcomes

Our district's focused strategies are directly contributing to our Outcomes and Longitudinal Performance Growth Targets (LPGT). We see tangible progress, especially in fostering a safe, welcoming, and inclusive environment for all students and families.



Building a Supportive School Climate



Authentic Relationships

Educators prioritize genuine connections with every student.



Mental & Behavioral Support

Behavioral Health and Child Development Specialists available at each elementary school.



Positive Learning

Improved classroom behavior enables all students to learn.



Engaging Families & Community

Parent education and partnerships are invaluable. Schools host Parent Nights, and offer resources. CDSs promote leadership among older students, and the district supports TSEL curriculum (Wayfinder), building on students' strengths.



Overcoming Financial Barriers

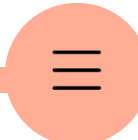
Last year's fiscal challenges required us to maximize every dollar. The Integrated Program Plan (IPP) guided our spending, prioritizing activities that most effectively advanced our outcomes—especially increasing graduation rates for all students and focal groups.

Collaborative Leadership & Data-Driven Decisions



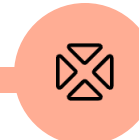
Unified Leadership

District Leadership Team aligned on priorities and strategies.



ORIS Needs Assessment

Reviewed strengths, growth areas, and next steps with SOESD facilitation.

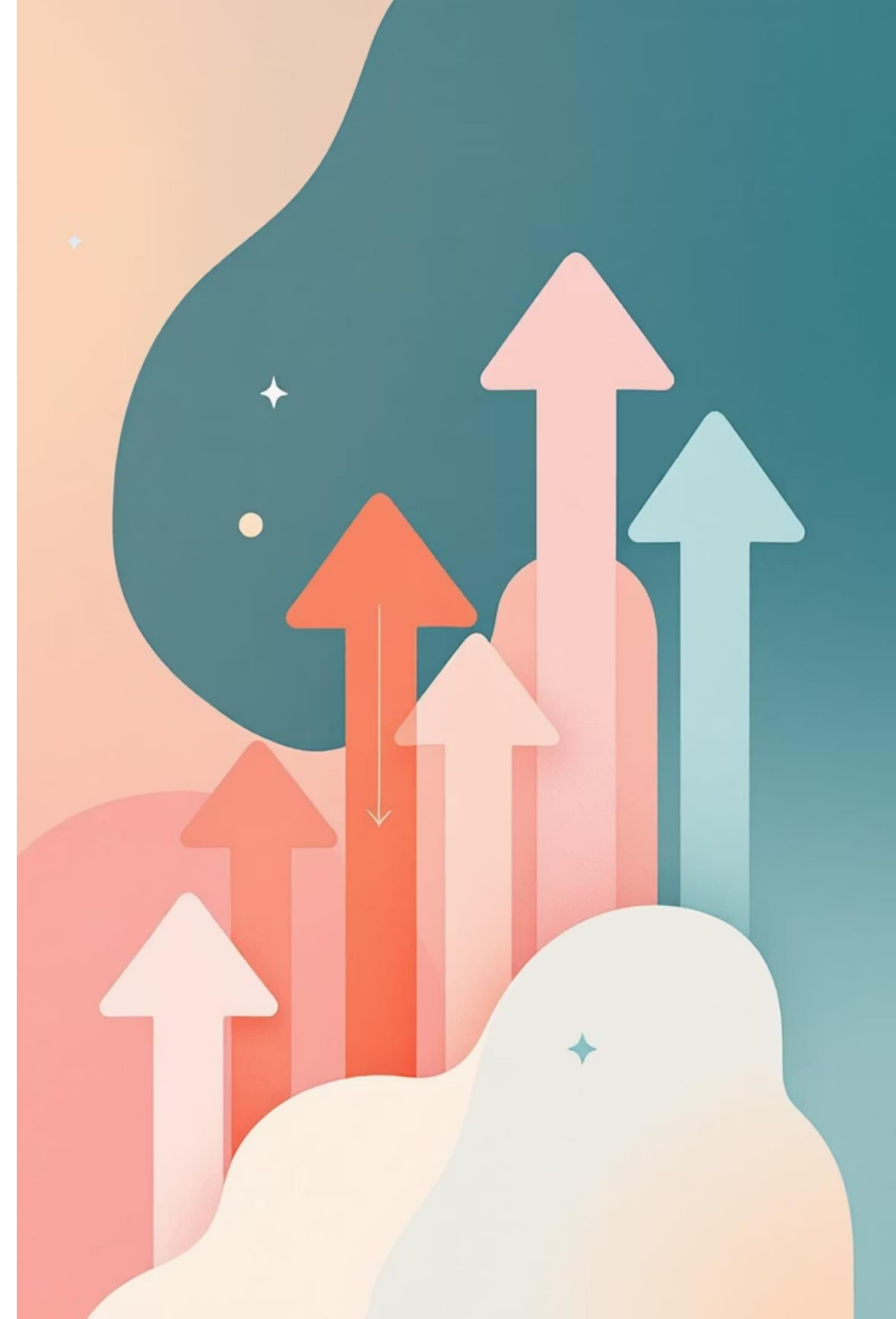


Continuous Improvement

Identified high-leverage practices for sustained progress.

Attendance: A District-Wide Focus

Improving student attendance is a district expectation. Staff are present and engaged across campus, connecting with students and reinforcing a sense of belonging. This focus is central to our progress on LPGT and LOM targets.



Expanded Student & Family Support



Counselor Access

Increased student access to counselors and advocates.



Listening Sessions

Gathered student feedback to inform school improvements.



Community Engagement

Partnered with local programs and families for holistic support.



Results: Attendance Metrics Improve

Our collective efforts have led to improved attendance across all three target types. Activities like targeted support, staff presence, and community collaboration are making a measurable difference.

Attendance Data: A Closer Look

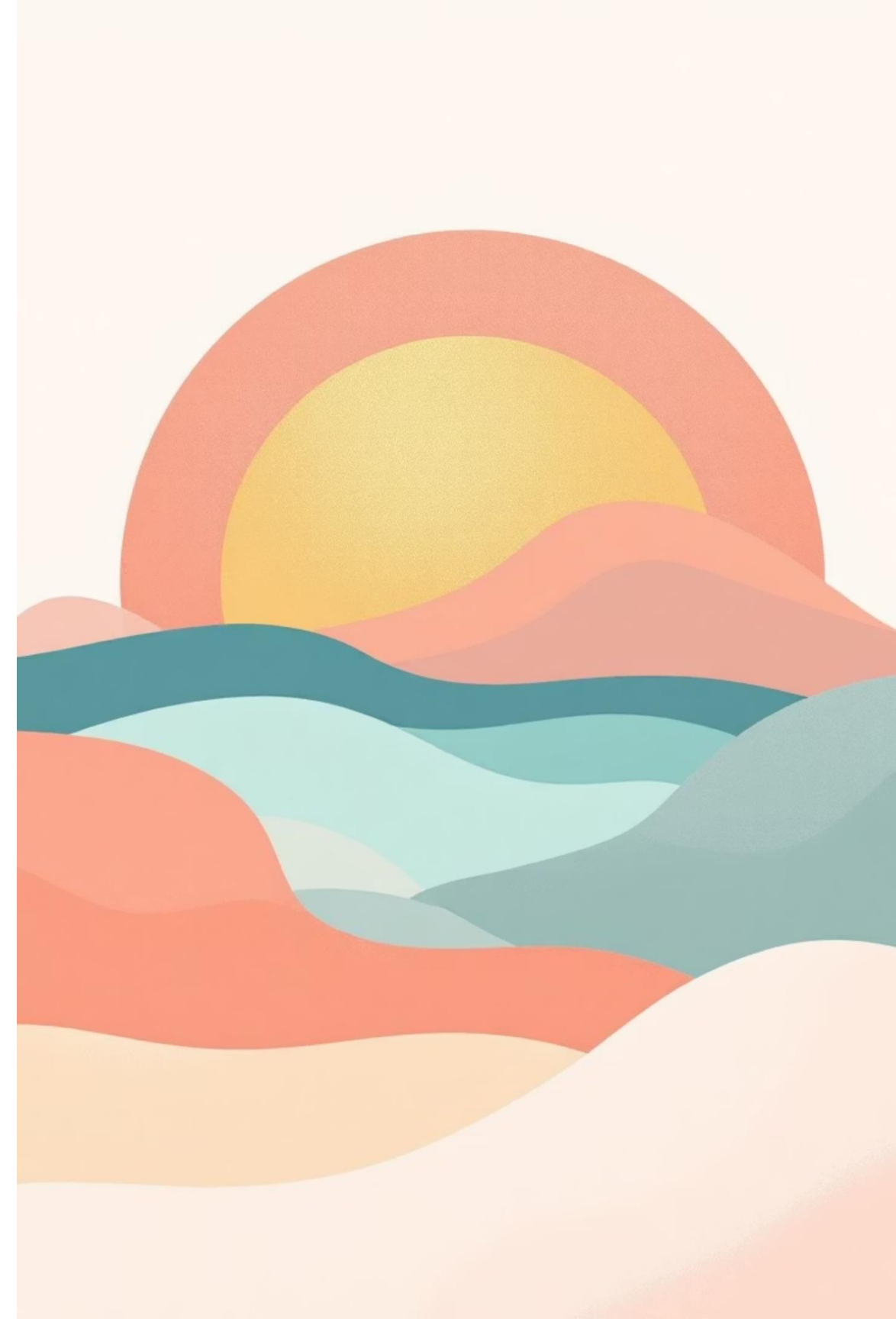
We've seen progress in student attendance across the district. The following data highlights the positive trends and our achievements against set targets for all students and specific focal groups.

Student Group	2021-2022	2022-2023	2023-2024 Target	2023-2024 Actual
All Students	75.15%	68.9%	71.8%	72.6%
Focal Groups	59.8%	63.6%	57.6%	66.9%

These figures demonstrate the positive impact of our collaborative efforts and targeted support in improving student attendance across the board.

Looking Ahead: Sustaining Momentum

We will continue and expand successful strategies, focusing on student well-being, family engagement, and data-driven improvement. Together, we're building a vibrant, inclusive, and resilient school community.



Ashland School District: 2024–25 Annual Progress Summary

Progress & Implementation Highlights

The district made intentional progress toward Outcome C by fostering a safe, inclusive environment. Behavioral Health and Child Development Specialists at each elementary school, authentic student relationships, and the Wayfinder TSEL curriculum supported student well-being. Parent Nights and leadership opportunities for older students enhanced family engagement. Financial challenges were met with strategic use of the Integrated Program Plan (IPP), guiding spending to support high-leverage practices and graduation-focused outcomes. Collaborative leadership and the ORIS Needs Assessment helped identify strengths and growth areas. Attendance improvement was a district-wide priority. Staff presence, increased counselor access, listening sessions, and community partnerships led to measurable gains. All Students attendance rose to 72.6% (target: 71.8%), and Focal Groups reached 66.9% (target: 57.6%).

Financial Overview

- EIIS: \$7,594.83 fully spent

- HSS: \$749,831.21 allocated, \$759,600.91 spent

Note: \$9,769.70 of the HSS total is flow-through from Pinehurst's allocation for shared access to Ashland's CTE program. Ashland School District has spent all funds allocated to ASD.

- SIA: \$2,515,593.24 allocated and spent

- Early Literacy: \$326,338.20 total expense from carryover and new award

All funds were strategically used to support district priorities and student outcomes.

Looking Ahead

The district will continue expanding successful strategies focused on student well-being, family engagement, and data-driven improvement. Unified leadership and community collaboration remain central to sustaining momentum.

Ashland School District 5

Code: JFCEB
Adopted: 10/10/24

Personal Electronic Devices and Social Media**

Student possession or use of personal electronic devices on district property, in district facilities during the school day and while the student is in attendance at district-sponsored activities may be permitted subject to the limitations set forth in this policy and consistent with any additional school rules as may be established by the principal and approved by the superintendent.

A “personal electronic device” is a device that is capable of electronically communicating, sending, receiving, storing, recording, reproducing and/or displaying information and data.

Personal electronic devices shall be turned off and stored while on school campuses. Devices which have the capability to take photographs or record video or audio shall not be used for such purposes while on district property or while a student is engaged in district-sponsored activities, unless as expressly authorized in advance by the principal or designee. Computers, tablets, iPads or similar devices brought to school will be restricted to academic activities and subject to additional school rules established by the principal and approved by the superintendent.

If the district implements a curriculum that uses technology, students may be allowed to use their own personal electronic devices to access the curriculum with prior permission from school officials. Students who are allowed to use their own devices to access the curriculum will be granted access to any application or electronic materials when they are available to students who do not use their own devices, or provided free of charge to students who do not use their own devices, for curriculum.

A process for responding to a student’s request to use a personal electronic device, including an appeal process if the request is denied, will be provided.

The district will not be liable for personal electronic devices brought to district property and district-sponsored activities.

Students may not use district equipment to access social media websites, while on district property or at district-sponsored activities unless the access is approved by a district representative. The district will not be liable for information or comments posted by students on social media websites.

Exceptions to the prohibitions set forth in this policy may be made for health, safety or emergency reasons with prior principal or designee approval or when use is provided for in a student’s individualized education program (IEP).

Students are subject to disciplinary action up to and including expulsion for using a personal electronic device in any manner that is academically dishonest, illegal or violates the terms of this policy¹. A referral

¹ The taking, disseminating, transferring or sharing of obscene, pornographic or otherwise illegal images or photographs, whether by electronic data transfer or otherwise (commonly called texting, sexting, emailing, etc.) may constitute a crime under state and/or federal law. Any person taking, disseminating, transferring or sharing obscene, pornographic or otherwise illegal images or photographs will be reported to law enforcement and/or other appropriate state or federal agencies.

to law enforcement officials may also be made. Personal electronic devices brought to district property or used in violation of this policy are subject to confiscation and will be released to the student's parent or property owner, as appropriate.

The superintendent shall ensure that the Board's policy and any subsequent school rules developed by building administrators are reviewed and approved in advance to ensure consistency with this policy and that pertinent provisions of policy and school rules are communicated to staff, students and parents through building handbooks and other means.

END OF POLICY

Legal Reference(s):

[ORS 332.107](#)

[ORS 336.840](#)

Copyrights, 17 U.S.C. §§ 101-1332 (2012); 19 C.F.R. Part 133 (2017).

Ashland School District 5

Code: IIBGC/GCLA/GDLA
Adopted: 5/09/24

Artificial Intelligence

Preamble:

The Ashland School District Board recognizes the significant and rapidly expanding role of Artificial Intelligence (AI) technologies in our society and the global economy. Understanding the importance of preparing our students for a future where AI is ubiquitous, the Board is committed to implementing a comprehensive AI literacy program across K-12 education. This policy aims to ensure students are equipped with the knowledge and skills to use AI tools effectively, think critically about AI technologies, and navigate the ethical implications of AI in both academic and real-world settings.

Policy Objectives:

- **To develop AI literacy among students at developmentally appropriate levels across all grades, K-12.**
- **To provide educators with the guidance and professional development needed to effectively teach AI concepts.**
- **To ensure universal access to AI tools and resources within the learning environment.**
- **To promote equity and ethical use of AI across all student demographics.**
- **To incorporate AI literacy, citizenship, and skills into the curriculum.**
- **To advocate for safe use and privacy in the application of AI technologies.**
- **To enhance bias awareness and foster an environment of ongoing assessment and recalibration of AI tools and instructional strategies.**

1. **Guidance and Professional Development for Educators:**

The district will facilitate ongoing professional development opportunities for educators to remain abreast of AI advancements and pedagogical strategies for integrating AI literacy into the curriculum. This includes workshops, seminars, and access to AI educational resources.

2. **Universal Access to AI Tools:**

To eliminate the digital divide, the district will ensure that all students have equitable access to AI tools and technologies at school. This will be achieved through the provision of necessary hardware and software in classrooms and libraries across the district.

3. **Equity and Ethical Use of AI:**

Curriculum development will include a strong emphasis on the ethical considerations of AI, including privacy, security, and the societal impacts of technology. The district will prioritize creating an inclusive environment where all students can learn about and engage with AI technologies.

4. **AI Literacy, Citizenship, and Skills:**

The curriculum will integrate AI literacy at all grade levels, tailored to the developmental stages of students. This includes understanding AI technology, its applications, and fostering responsible digital citizenship and critical thinking skills.

5. **Safe Use and Privacy:**

Education on the safe use of AI technologies and the importance of data privacy will be embedded into the curriculum. Students will learn best practices for protecting personal information online and the implications of data sharing.

6. **Bias Awareness:**

Instruction will include discussions on the potential biases within AI systems and the importance of diverse data sets in the development of AI technologies. Students will be encouraged to critically evaluate AI outputs and consider the ethical dimensions of AI use.

7. **Harmful Use of AI**

The creation and dissemination of deep fakes—digitally manipulated photographs, audio, or videos that create explicit, derogatory, or false portrayals of students or members of the school community— present significant risks to mental health, the school environment, and safety. The use of deep fakes and any other potentially harmful applications of AI are strictly forbidden and will lead to disciplinary measures up to and including expulsion. Any criminal behavior will be reported to law enforcement.

The District will provide instruction about the ethical use of AI technologies and the consequences of their misuse.

8. **Ongoing Assessment and Recalibration:**

The district commits to the continuous evaluation of AI literacy curriculum and resources, ensuring that instructional materials remain current with the evolving landscape of AI technologies. This includes regular updates to the curriculum and professional development offerings based on the latest research and industry advancements.

Implementation:

The Superintendent, in collaboration with the District Technology Officer and Curriculum Development Team, will oversee the policy’s implementation, including resource allocation, program development, and the establishment of evaluation metrics to assess progress.

Review and Adjustment:

The policy will be reviewed annually by the Board, with adjustments made as necessary to reflect technological advancements, educational research, and feedback from educators, students, and the community.

END OF POLICY

Legal Reference(s):

ASHLAND SCHOOL DISTRICT 5

Report on Compliance with Public School Standards

2024-25 School Year

By November 1 of each year, school district superintendents are required by [OAR 581-022-2305: District Assurances of Compliance with Public School Standards](#) to report to their community on the district’s status with respect to all of the Standards for Public Elementary and Secondary Schools. The Standards are adopted by the State Board of Education and set out in Oregon Administrative Rules Chapter 581, Division 22.

The table below contains a summary of Ashland School District’s compliance with each of the requirements of Oregon’s administrative rules found in [DIVISION 22 - STANDARDS FOR PUBLIC ELEMENTARY AND SECONDARY SCHOOLS](#) during the 2024-25 school year. For each rule reported as out of compliance, Ashland School District has provided an explanation of why the school district was out of compliance and the school district’s proposed corrective action plan to come into compliance. The corrective action must be approved by ODE and completed by the district by the beginning of the 2026-27 school year.

What are the requirements of the standards? For a general overview of what each rule/standard requires, consult this high-level [Rules at a Glance summary](#). For specific, comprehensive requirements, use the links below for each individual rule.

Category: High-Quality Learning Experiences for All Students

Rule # and Title	Status	Explanation/Evidence	Corrective Action Plan & Timeline
581-022-2000 Diploma Requirements	In compliance	The district has met all of the requirements for this rule.	Not applicable
581-022-2010 Modified Diploma	In compliance	The district has met all of the requirements for this rule.	Not applicable
581-022-2015 Extended Diploma	In compliance	The district has met all of the requirements for this rule.	Not applicable
581-022-2020 Certificate of Attendance	In compliance	The district has met all of the requirements for this rule.	Not applicable

Rule # and Title	Status	Explanation/Evidence	Corrective Action Plan & Timeline
581-022-2050 Human Sexuality Education	In compliance	The district has met all of the requirements for this rule.	Not applicable
581-022-2055 Career Education	In compliance	The district has met all of the requirements for this rule.	Not applicable
581-022-2263 Physical Education Requirements *Elementary Grades	In compliance	The district has met all of the requirements for this rule.	Not applicable
581-022-2263 Physical Education Requirements *Middle Grades	In compliance	The district has met all of the requirements for this rule.	Not applicable
581-022-2340 Media Programs	In compliance	The district has met all of the requirements for this rule.	Not applicable
581-022-2350 Independent Adoptions of Instructional Materials	In compliance	The district has met all of the requirements for this rule.	Not applicable
581-022-2355 Instructional Materials Adoption	Implementing approved corrective action	Ashland School District Instructional Materials Division 22 Action Plan was submitted and approved by ODE. We are following the schedule outlined in the plan.	ELA Adoption completed in 24-25 (Fall of 2025 implementation), Science/ Health Adoption in 25-26 (Fall 2026 implementation), Social Science adoption in 26-27 (Fall 2027 implementation). Independent adoption of ELA (review), PE, World Languages, The Arts in 2027-28 (Fall 2028 implementation)
581-022-2360 Postponement of Purchase	In compliance	The district has met all of the requirements for this rule.	Not applicable

Rule # and Title	Status	Explanation/Evidence	Corrective Action Plan & Timeline
of State-Adopted Instructional Materials			
581-022-2440 Teacher Training Related to Dyslexia	In compliance	The district has met all of the requirements for this rule.	Not applicable
581-022-2500 Programs and Services for TAG Students	In compliance	The district has met all of the requirements for this rule.	Not applicable
581-022-2505 Alternative Education Programs	In compliance	The district has met all of the requirements for this rule.	Not applicable

Category: Aligned and Focused Educational Systems

Rule # and Title	Status	Explanation/Evidence	Corrective Action Plan & Timeline
581-022-2025 Credit Options	In compliance	The district has met all of the requirements for this rule.	Not applicable
581-022-2030 District Curriculum	In compliance	The district has met all of the requirements for this rule.	Not applicable
581-022-2060 Comprehensive School Counseling	In compliance	The district has met all of the requirements for this rule.	Not applicable
581-022-2100 Administration of State Assessments	In compliance	The district has met all of the requirements for this rule.	Not applicable

Rule # and Title	Status	Explanation/Evidence	Corrective Action Plan & Timeline
581-022-2110 Exception of Students with Disabilities from State Assessments	In compliance	The district has met all of the requirements for this rule.	Not applicable
581-022-2115 Assessment of Essential Skills: Diploma Requirements	Waived through the end of 2027-28 school year	Not applicable	Not applicable
581-022-2115(2) Assessment of Essential Skills: Local Performance Assessment Requirement	In compliance	The district has met all of the requirements for this rule.	Not applicable
581-022-2120 Essential Skill Assessments for English Language Learners	Waived through the end of 2027-28 school year	Not applicable	Not applicable
581-022-2250 District Improvement Plan	In compliance	The district has met all of the requirements for this rule.	Not applicable
581-022-2260 Records and Reports	In compliance	The district has met all of the requirements for this rule.	Not applicable
581-022-2265 Report on PE Data	In compliance	The district has met all of the requirements for this rule.	Not applicable
581-022-2300 Standardization	In compliance	The district has met all of the requirements for this rule.	Not applicable
581-022-2305 District Assurances of Compliance with Public School Standards	In compliance	The district has met all of the requirements for this rule.	Not applicable

Rule # and Title	Status	Explanation/Evidence	Corrective Action Plan & Timeline
581-022-2315 Special Education for Children with Disabilities	In compliance	The district has met all of the requirements for this rule.	Not applicable
581-022-2320 Required Instructional Time	In compliance	The district has met all of the requirements for this rule.	Not applicable
581-022-2325 Identification of Academically Talented and Intellectually Gifted Students	In compliance	The district has met all of the requirements for this rule.	Not applicable
581-022-2335 Daily Class Size	In compliance	The district has met all of the requirements for this rule.	Not applicable
581-022-2400 Personnel	In compliance	The district has met all of the requirements for this rule.	Not applicable
581-022-2445 Universal Screenings for Risk Factors of Dyslexia	In compliance	The district has met all of the requirements for this rule.	Not applicable

Category: Engaged Partners and Communities

Rule # and Title	Status	Explanation/Evidence	Corrective Action Plan & Timeline
581-022-2005 Veterans Diploma	In compliance	The district has met all of the requirements for this rule.	Not applicable

Rule # and Title	Status	Explanation/Evidence	Corrective Action Plan & Timeline
581-022-2255 School and District Performance Report Criteria	In compliance	The district has met all of the requirements for this rule.	Not applicable
581-022-2270 Individual Student Assessment, Recordkeeping and Reporting	In compliance	The district has met all of the requirements for this rule.	Not applicable
581-022-2330 Rights of Parents of TAG Students	In compliance	The district has met all of the requirements for this rule.	Not applicable
581-022-2370 Complaint Procedures	In compliance	The district has met all of the requirements for this rule.	Not applicable

Category: Safe & Inclusive Schools

Rule # and Title	Status	Explanation/Evidence	Corrective Action Plan & Timeline
581-022-2045 Substance Use Prevention and Intervention Plan	In compliance	The district has met all of the requirements for this rule.	Not applicable
581-022-2205 Policies on Reporting of Child Abuse	In compliance	The district has met all of the requirements for this rule.	Not applicable
581-022-2210 Anabolic Steroids and Performance Enhancing Substances	In compliance	The district has met all of the requirements for this rule.	Not applicable

Rule # and Title	Status	Explanation/Evidence	Corrective Action Plan & Timeline
581-022-2215 Safety of School Sports – Concussions	In compliance	The district has met all of the requirements for this rule.	Not applicable
581-022-2220 Health Services	In compliance	The district has met all of the requirements for this rule.	Not applicable
581-022-2223 Healthy and Safe Schools Plan	In compliance	The district has met all of the requirements for this rule.	Not applicable
581-022-2225 Emergency Plans and Safety Programs	In compliance	The district has met all of the requirements for this rule.	Not applicable
581-022-2230 Asbestos Management Plans	In compliance	The district has met all of the requirements for this rule.	Not applicable
581-022-2267 Annual Report on Restraint and Seclusion	In compliance	The district has met all of the requirements for this rule.	Not applicable
581-022-2308 Agreements Entered Into with Voluntary Organizations	In compliance	The district has met all of the requirements for this rule.	Not applicable
581-022-2310 Equal Education Opportunities	In compliance	The district has met all of the requirements for this rule.	Not applicable
581-022-2312 Every Student Belongs	In compliance	The district has met all of the requirements for this rule.	Not applicable
581-022-2345 Auxiliary Services	In compliance	The district has met all of the requirements for this rule.	Not applicable

Rule # and Title	Status	Explanation/Evidence	Corrective Action Plan & Timeline
581-022-2430 Fingerprinting of Subject Individuals in Positions Not Requiring Licensure as Teachers, Administrators, Personnel Specialists, School Nurses	In compliance	The district has met all of the requirements for this rule.	Not applicable
581-022-2510 Suicide Prevention Plan	In compliance	The district has met all of the requirements for this rule.	Not applicable
581-022-2515 Menstrual Dignity for Students	In compliance	The district has met all of the requirements for this rule.	Not applicable

Category: Committed and Supportive Staff

Rule # and Title	Status	Explanation/Evidence	Corrective Action Plan & Timeline
581-022-2405 Personnel Policies	In compliance	The district has met all of the requirements for this rule.	Not applicable
581-022-2410 Teacher and Administrator Evaluation and Support	In compliance	The district has met all of the requirements for this rule.	Not applicable
581-022-2415 Core Teaching Standards	In compliance	The district has met all of the requirements for this rule.	Not applicable
581-022-2420 Educational Leadership - Administrator Standards	In compliance	The district has met all of the requirements for this rule.	Not applicable



Division 22 Standards Assurances for the 2024-25 School Year

August 28, 2025

School Board Work Session

Dr. Joseph Hatrick

What are the Division 22 Standards?



- Standards for Public Elementary and Secondary Schools: all Oregon administrative rules (OARs) set out in Chapter 581, Division 22.

Example: 581 - 022 - 0102 Definitions
Chp. Div. Rule Title

- The standards that the Oregon legislature or the State Board has determined must be met in order to be a standard school district.
- Compliance with these rules ensures a baseline level of service across the state.

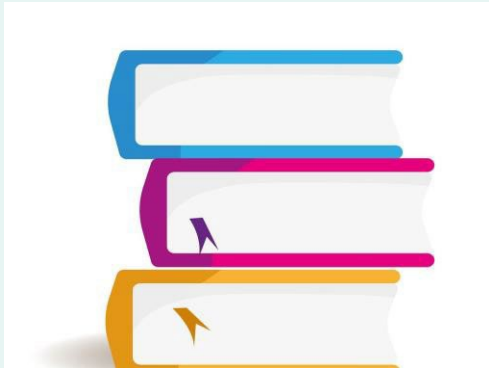
Report for the 2024-25 School Year

Division 22 Waivers for 2024-25

- [581-022-2115\(3\) Assessment of Essential Skills:](#)
 - **Essential Skills Graduation Requirements** are waived for students graduating through the end of the 2027-28 school year.
 - Note: Local Performance Assessment requirement in Section (2) remains in effect.
- [OAR 581-022-2120 Essential Skill Assessments for English Language Learners](#)
 - This related policy requirement has also been waived through the end of the 2027-28 SY.



Rule Revisions in Effect for the 2024-25 SY



OAR 581-022-2030 District Curriculum

Beginning in 2024-25, districts must have had:

- a planned K-12 instructional program for Social and Emotional Learning; and
- a planned 9-12 instructional program which includes the Personal Financial Education and Higher Education and Career Path Skills content standards.

Rule Revisions in Effect for the 2024-25 SY



Modified Diploma, Extended Diploma, and Certificate of Attendance

Districts must annually provide parents information about diploma availability and requirements, and disclosure about certificates of attendance. On-site access to all courses is required for a diploma at all high schools.

OAR 581-022-2045 Substance Use Prevention and Intervention Plan

Requires a written comprehensive plan for substance use prevention and intervention. Includes K-12 substance use prevention education that meets the Health Education Standards; **requires a minimum of 1 ODE Opioid Prevention Education lesson in grades 6, 7, and 8 and once in High School (SB 238 – 2023).**

District Report on Compliance with Division 22 Standards

ASD utilized the ODE-provided Division 22 District Internal Tracking Tool to:

- Review each standard
- Identify evidence of compliance
- Decide compliance status

Corrective Action Implemented and Resolved

[581-022-2355 Instructional Materials Adoption](#)

- As part of a previous instructional materials corrective action plan, ASD met its deadline for completing ELA curriculum adoption by the end of the 2024-25 school year
- Our status will show “Implementing Corrective Action” on the Assurances Report for the 2024-25 school year

[581-022-2360 Postponement of Purchase of State-Adopted Instructional Materials](#)

- Our status will show “In compliance” for 2024-25 because we have postponements in place for Science and Health Curricula, and we will be requesting a 1-year postponement for Social Sciences for the 2025-26 school year

Looking Ahead: Compliance for the 2025-26 SY

Compliance for the 2025-26 SY

Ashland School District is on track to meet the new rules/requirements for implementation in the 2025-26 school year.



ASHLAND SCHOOL DISTRICT 5

Report on Compliance with Public School Standards

2024-25 School Year

By November 1 of each year, school district superintendents are required by [OAR 581-022-2305: District Assurances of Compliance with Public School Standards](#) to report to their community on the district's status with respect to all of the Standards for Public Elementary and Secondary Schools. The Standards are adopted by the State Board of Education and set out in Oregon Administrative Rules Chapter 581, Division 22.

The table below contains a summary of Ashland School District's compliance with each of the requirements of Oregon's administrative rules found in [DIVISION 22 - STANDARDS FOR PUBLIC ELEMENTARY AND SECONDARY SCHOOLS](#) during the 2024-25 school year. For each rule reported as out of compliance, Ashland School District has provided an explanation of why the school district was out of compliance and the school district's proposed corrective action plan to come into compliance. The corrective action must be approved by ODE and completed by the district by the beginning of the 2026-27 school year.

What are the requirements of the standards? For a general overview of what each rule/standard requires, consult this high-level [Rules at a Glance summary](#). For specific, comprehensive requirements, use the links below for each individual rule.

Category: High-Quality Learning Experiences for All Students

Rule # and Title	Status	Explanation/Evidence	Corrective Action Plan & Timeline
581-022-2000 Diploma Requirements	In compliance	The district has met all of the requirements for this rule.	Not applicable
581-022-2010 Modified Diploma	In compliance	The district has met all of the requirements for this rule.	Not applicable
581-022-2015 Extended Diploma	In compliance	The district has met all of the requirements for this rule.	Not applicable
581-022-2020 Certificate of Attendance	In compliance	The district has met all of the requirements for this rule.	Not applicable

Instructional Materials Division 22 Action Plan

Ashland School District

October 10, 2024



ASHLAND SCHOOL DISTRICT CORRECTIVE ACTION PLAN

School Year	Content Area(s) to be adopted	Adoption Plan (State List or Independent Adoption)	IMPLEMENTED
2022-23 (Fall 2023 implementation)	Math	State List K-8 Independent Adoption 9-12	FALL '23
2023-24 (Fall 2024 implementation)	Digital Materials	Independent Adoption	FALL '24
2024-25 (Fall 2025 implementation)	ELA	K-5 – budgeted through grant 6-12 – Open Source Adoption 3-years outside of implementation window 581-022-2355 out-of-compliance 2024 only	FALL '25
2025-2026 (Fall 2026 implementation)	Science Health	2-year postponement approved 10/10/2024 1-year postponement approved 10/10/2024	
2026-2027 (Fall 2027 implementation)	Social Sciences	1-year postponement to be approved 9/2025	
2027-2028 (Fall 2028 implementation)	Independent adoption of ELA (review) PE, World Languages, The Arts	Review 1-year postponement to be approved 9/2026	

This action plan addresses Division 22 Rule/Titles:

[581-022-2355 Instructional Materials Adoption](#)

[581-022-2360 Postponement of Purchase of State-Adopted Instructional Materials](#)

Core Instructional Materials Adoption Request

Science and Health

Ashland School Board Meeting

September 11, 2025

Presented by Assistant Superintendent Michelle Cuddeback

Why Initiate Now?

Compliance with Schedule

- Reviewing Science and Health this year ensures compliance with our Division 22 Corrective Action Plan.

Addressing Student Performance

- Updated materials help close achievement gaps and improve curricular weaknesses identified in recent data.

Available Funding

- Current funding availability supports acquisition and implementation of new instructional resources effectively.

Commitment to Equity

- Starting now ensures equity, accessibility, and instructional consistency across all student groups.



Board's Role in the Adoption Process

Initiation and Approval

- The school board approves the start of the instructional materials adoption process and defines desired outcomes.

Appointment of Facilitator

- The superintendent appoints a facilitator to oversee and manage the adoption activities effectively.

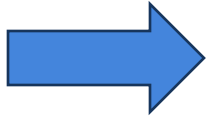
Review and Final Approval

- The board previews material recommendations and holds final approval authority ensuring alignment with district goals.

Governance and Accountability

- Board involvement promotes transparency, accountability, and community trust throughout the adoption process.

Core Instructional Materials Adoption Process



Board Approves Initiation of Process

Board approves initiation of process and articulates desired outcome (one aligned curriculum K-5 and aligned curriculum 6-12). Superintendent names process facilitator.

Curriculum Committee Formation

The adoption process begins with forming a curriculum committee setting a vision with clear criteria.

Data Review and Criteria Development

The committee analyzes student data to develop criteria aligned with standards, policies, and equity. Committee presents relevant data, standards, and proposed decision matrix to the board for input.

Instructional Material Review

Materials are reviewed thoroughly, and a budget is prepared for acquisition planning.

Board Review and Adoption

Recommendations are presented for public and board review before final adoption and official notification.

Request to the Board

Initiate the process for core instructional materials review and adoption to ensure compliance with Division 22 Corrective Action Plan

Articulate desired outcome: single K-5 core curriculum and aligned 6-12 curriculum