

Budget Committee Meeting

Tuesday, April 16, 2024 6:30 PM

District Administration Office, 88834 Territorial Road, Elmira, Oregon 97437

1. Call Meeting to Order

1.A. Flag Salute

1.B. Election of Officers - Budget Committee Action

1.C. Approval of Minutes - Budget Committee Action

2. Overview of Budget Process, Budget Committee Roles and Financial Forecast

Presenter: Quanah Bennett

3. Recess Until Next Meeting - Budget Committee Action



FERN RIDGE SCHOOL DISTRICT 28J

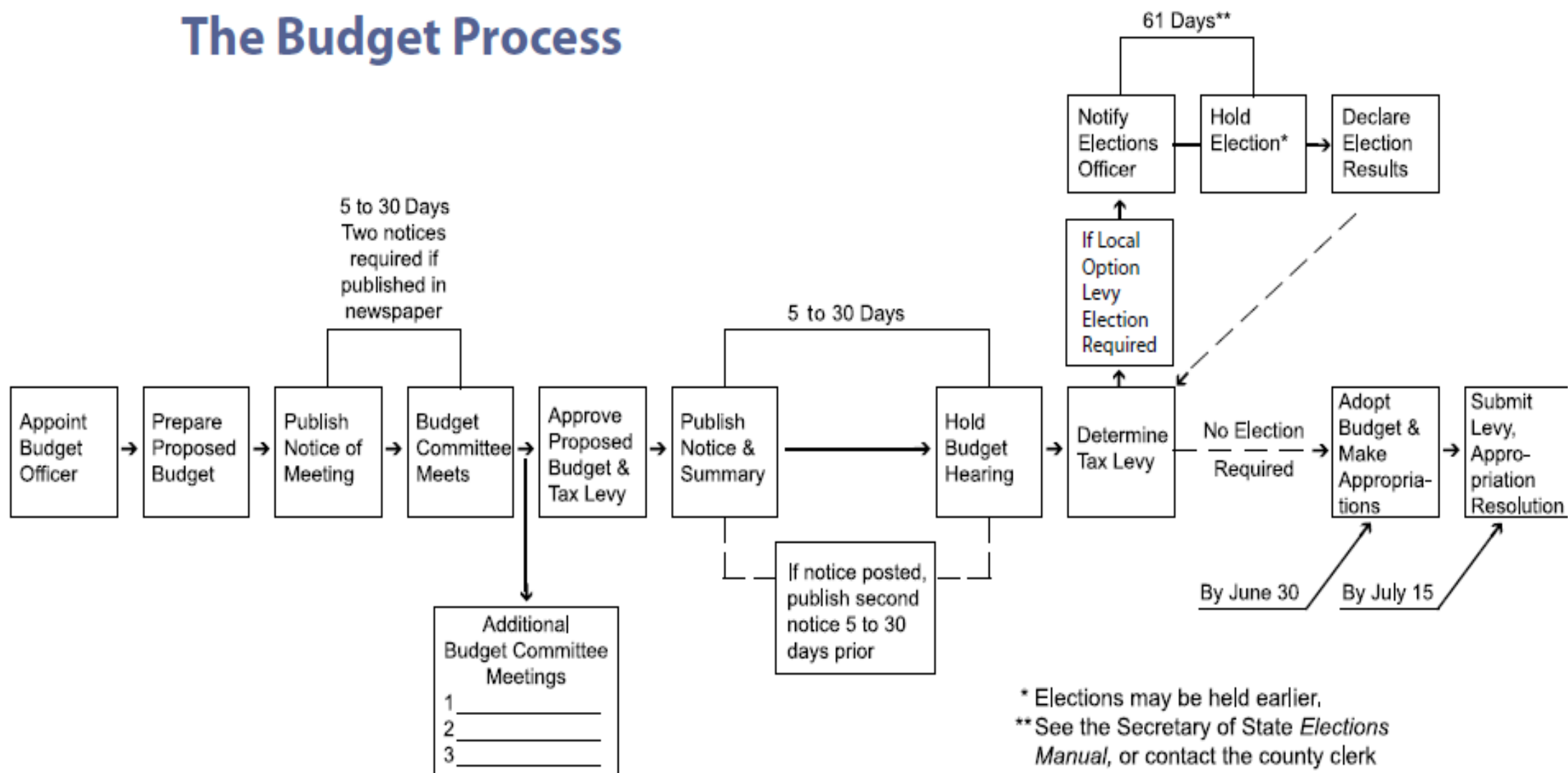
Budget Committee

April 16th, 2024

Agenda

- Outline of Budget Process
- What is a budget and what is a budget committee?
- Budget Committee Roles and Responsibilities
- Financial Forecast

The Budget Process



* Elections may be held earlier.
 ** See the Secretary of State *Elections Manual*, or contact the county clerk for actual dates of filing.

INTRODUCTION

What is a Budget?

A financial plan with estimates of revenues and expenditures for a single fiscal year.

What is the law?

Oregon Local Budget Law establishes procedures for preparing, presenting and administering the budget. Requires citizen involvement before formal adoption.

Who is on the Budget Committee?

School Board Members and an equal number of citizens (5).

Board members are elected, citizens are appointed by the Board.

Citizens serve terms of three years.

Budget Committee Role

Do:

- Hear the Budget Message
- Hear and Consider Public Comment
- Discuss and Revise Budget as needed
- Approve the Budget
- Approve Tax Rate and Levy Amount

Don't:

- Set salaries, benefits or contract terms
- Set staffing levels or organization structure decisions
- Decide if a program or service should be provided
- Make or alter district goals or policies

FINANCIAL FORECAST

BUDGET DRIVERS - Revenues

The knowns:

- The 23-25 State School Fund Allocation Estimate has been released as it is the second half of the biennium
- Estimated enrollment is set

The unknowns:

- The impact of future Changes in Enrollment locally and statewide and how it will impact State Funding/weights?
- Grants?

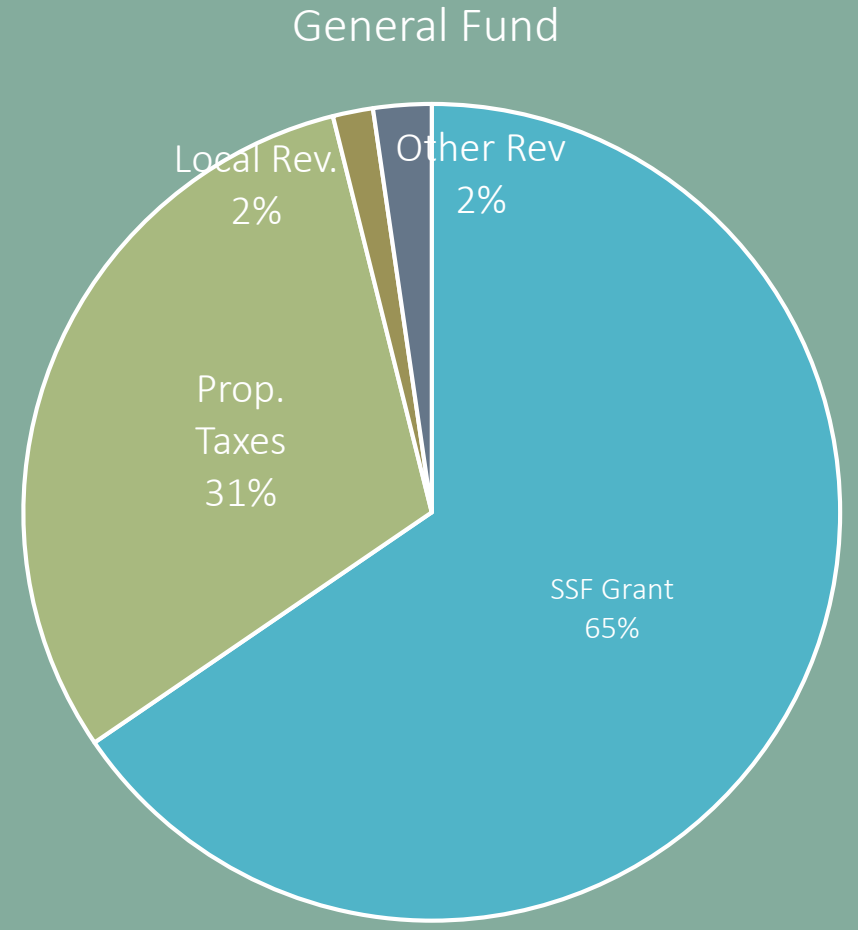
REVENUE



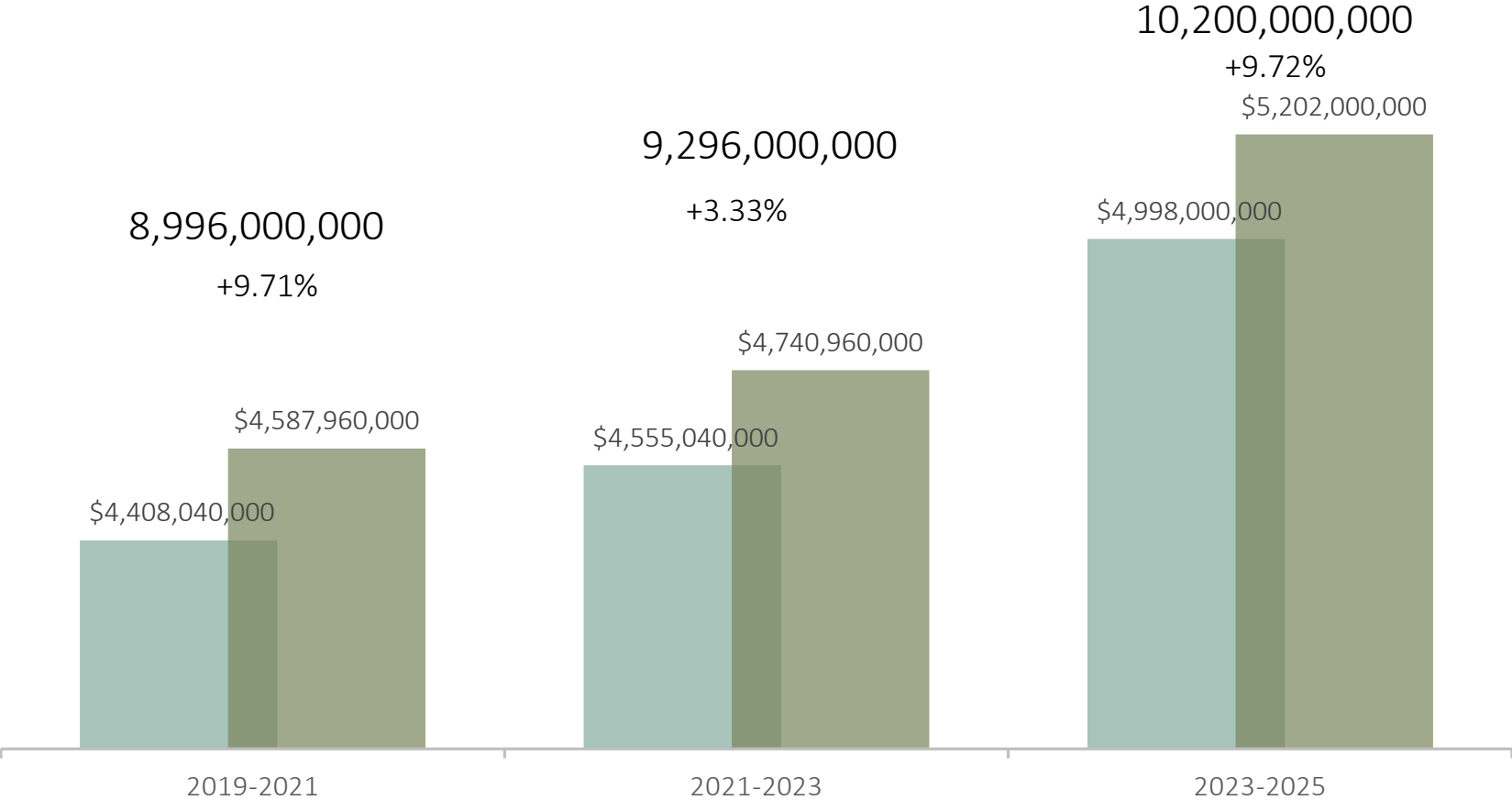
The General Fund Formula Revenue is typically 98% of our annual operating revenues. This includes the SSF, Property Taxes, Common School fund, County School Fund, State/Federal Timber Revenue.

The remaining 2% comes from interest, indirect grant charges, Erate, misc. fees.

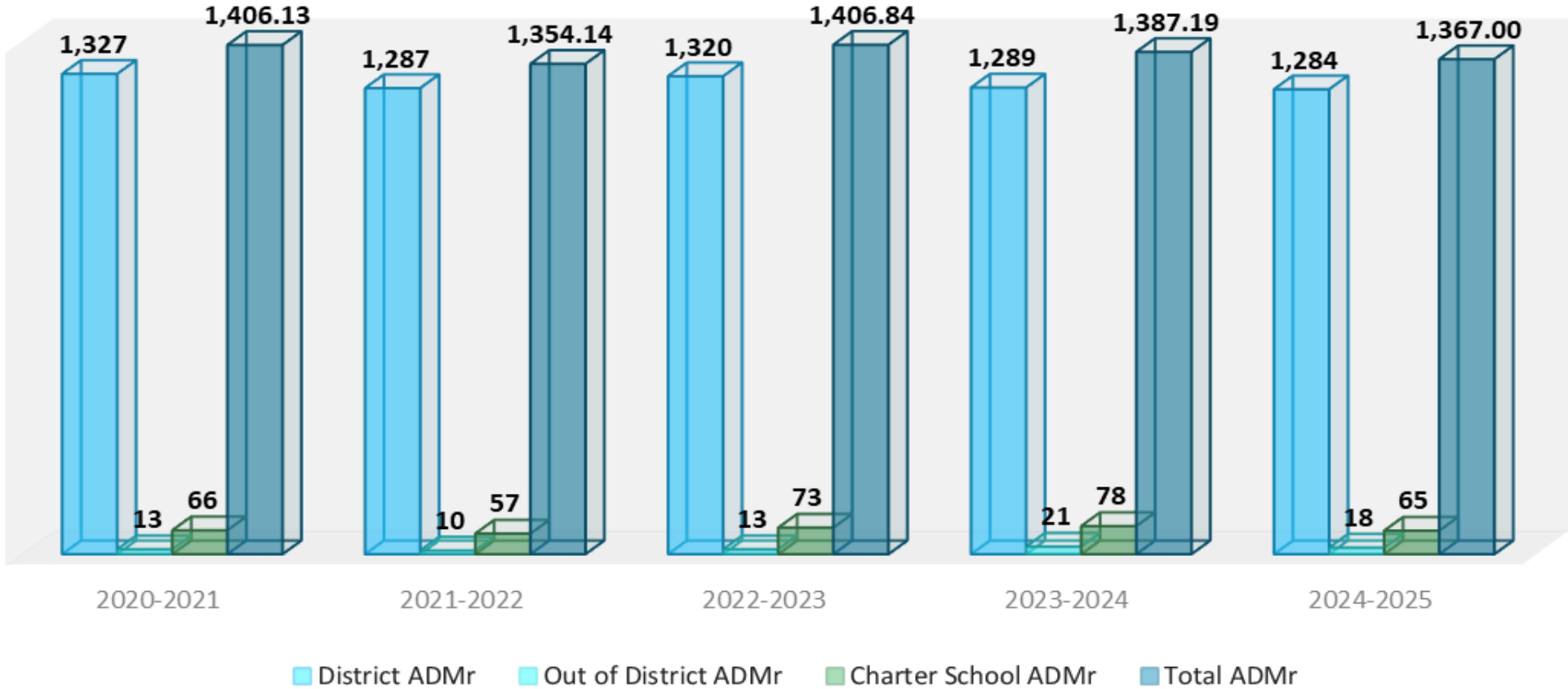
- Highly dependent upon the economy, state income taxes, property values
- Revenue in 2023-2025 is based on the Governor's proposed \$10.2 billion K-12 allocation



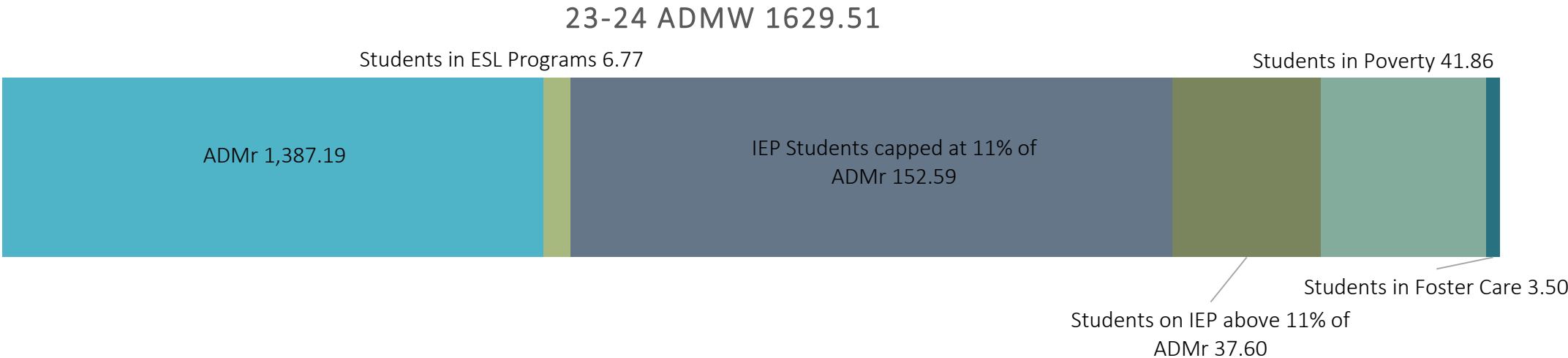
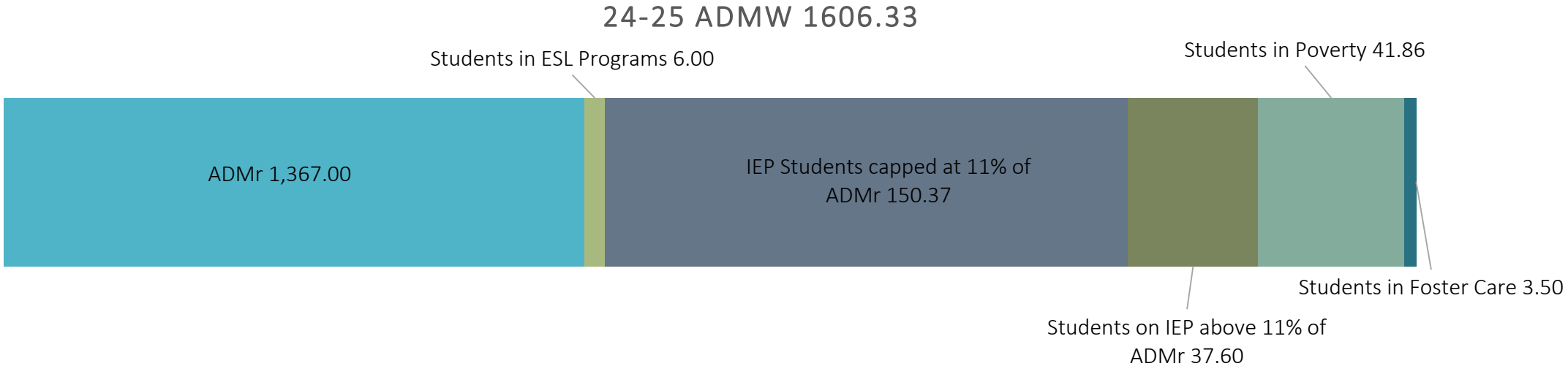
State School Fund Allocation



Enrollment ADMr



Projected 24-25 Extended ADMw is 1629.51 (The higher of two years)



Budget Drivers - Expenditures

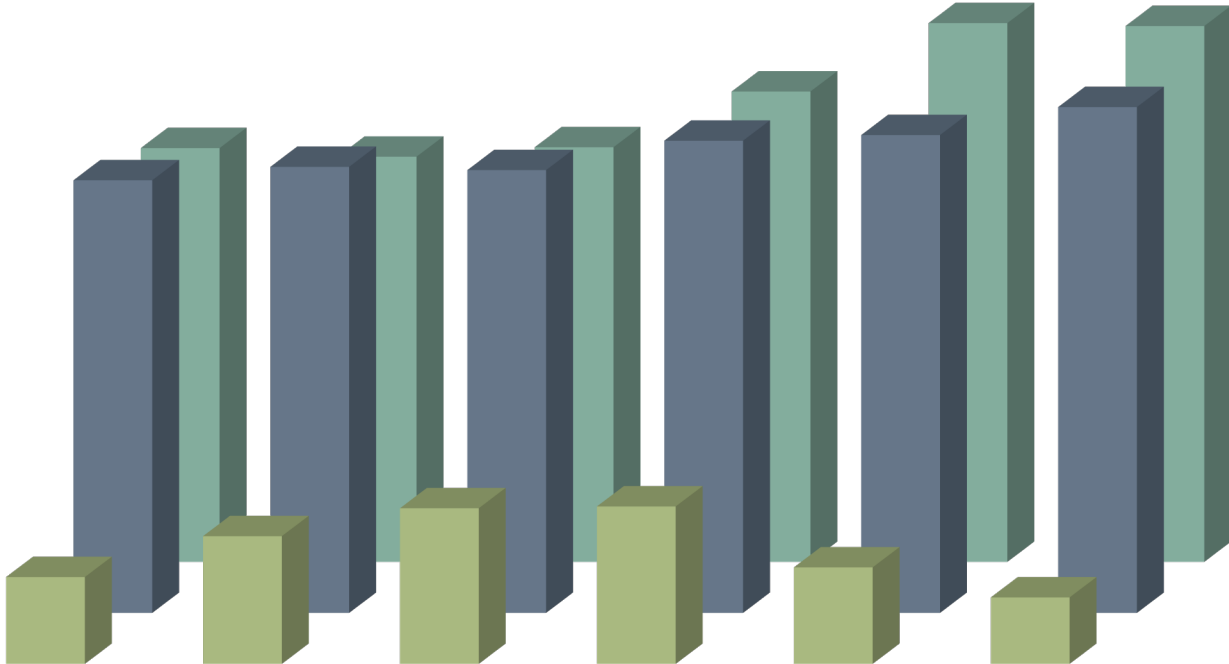
The knowns:

- Negotiations: All groups are settled for 24-25.
- PERS rates: remain the same as 23-24.

The unknowns:

- The Economy?
- Price increases?
- Grants?

General Fund Ending Fund Balance



	2019-2020	2020-2021	2021-2022	2022-2023	2023-2024 Projected	2024-2025 Proposed budget
Ending Fund Balance	\$3,172,185	\$4,665,916	\$5,685,770	\$5,752,142	\$3,524,746	\$2,427,846
Revenues	\$15,805,766	\$16,296,343	\$16,176,533	\$17,250,685	\$17,456,594	\$18,480,056
Expenditures	\$15,118,068	\$14,802,613	\$15,147,679	\$17,184,314	\$19,683,989	\$19,576,956

FERN RIDGE SCHOOL DISTRICT 28J
EARLY RETIREMENT BENEFITS "AT A GLANCE"

	Licensed Employees	Classified Employees	Total
Projected 23-24 Ending Fund Balance			\$ 1,587,837
Eligibility:			
Age	55	58	
Years of Service	15	15	
Hired Before	7/1/2001	7/1/2005	
Current Monthly Stipend:			
Annual Increase	None	Half of CPI	
Monthly Insurance Contribution:	\$1,594	\$1,735	
Annual Increase	<i>Per bargaining unit agreement</i>	<i>Per bargaining unit agreement</i>	
Current Number of Retirees	1	5	6
Current Employees Still Eligible	0	5	5
Annual Cost in 2024-2025	\$21,368	\$252,596	\$273,964
Total Estimated Liability (Future Cost)	\$0	\$712,485	\$712,485
	\$21,368	\$965,081	\$986,449
Last Year Benefits are Paid	2024-2025	2030-2031	

The Classified Stipend is increased annually by half of the Western CPI.

The licensed stipend is set at \$725 a month.

The Annual insurance increase is per the FREA and OSEA bargaining agreement. Licensed receive 85% of the licensed district contribution. The classified contribution varies depending on their FTE for the 3 years prior to retirement.

The General Fund has transferred \$10,108,300 since 2006 to fund the Early Retirement Program. We are not budgeting a transfer for 23-24.

NEXT STEP

- *Prepare the budget*
- *Align resources to meet student needs*
- *Estimate expenditures based on enrollment and staffing levels*
- *Maintain financial stability*

QUESTIONS?

First Budget Committee Meeting: Tuesday, May 21st at 6:30 PM at the District Office

Superintendent's Budget Message will be presented

A copy of the budget document may be inspected online at the Districts Website on or after May 15th, 2024 or a hard copy obtained via email request to qbennett@fernridge.k12.or.us

Written comments received by 5pm on May 20th, 2024 will be read into the recording during the public comment section of the meeting on May 21st, 2024.