



Governing Board Meeting/Public Hearing

August 9, 2023

SASED Administrative Center

2900 Ogden

Lisle, IL 60532

6:30 PM

AGENDA

1. **Call to Order/Roll Call**
2. **Pledge of Allegiance**
3. **Public Comment**
4. **Recess for FY24 Budget Public Hearing**

5. **Public Comment**
6. **Adjourn Public Hearing**
7. **Reconvene the August 9, 2023 Governing Board Meeting**
8. **Discussion without Action**
 - a. SASED Updated Organizational Chart 23-24
9. **Discussion with Action**
 - a. Approval of Minutes from May 31, 2023 Meeting
 - b. Adopt the Resolution to Approve the FY24 Budget
 - c. Ratify the Employment Agreement for Interim Executive Director Jim Nelson
 - d. Ratify the Employment Agreement for Interim Executive Director Jimmy Gunnell
10. **Adjournment**

**SCHOOL ASSOCIATION FOR SPECIAL EDUCATION IN DUPAGE COUNTY
NOTICE OF PUBLIC HEARING**

Notice is hereby given by the Board of Directors of the School Association for Special Education in DuPage County (SASED), in the County of DuPage, State of Illinois, that a tentative budget for SASED for the fiscal year beginning July 1, 2023 and ending June 30, 2024, will be on file and conveniently available for public inspection at the SASED Administrative Office, 2900 Ogden Avenue, Lisle, Illinois, from and after 9:00 a.m. Central Daylight Savings Time on the 9th day of July, 2023.

Notice is hereby further given that a public hearing on said budget will be held at 6:30pm, Central Daylight Savings Time, on the 9th day of August, 2023, at the SASED Administrative Office, 2900 Ogden Avenue, Lisle, Illinois.

Dated this 9th of July, 2023

Dr. Anthony Palmisano, Secretary of the Board of Directors
School Association for Special Education in
DuPage County, Lisle, Illinois

SY23-24 BOARD OF DIRECTORS MEETING DATES

Date	Time	Location
August 16, 2023	11:00 AM	SASED Administrative Center
September 20, 2023	11:00 AM	SASED Administrative Center
October 18, 2023	11:00 AM	SASED Administrative Center
December 13, 2023	11:00 AM	SASED Administrative Center
January 24, 2024 (Joint with GOV)	11:00 AM	SASED Administrative Center
February 21, 2024	11:00 AM	SASED Administrative Center
March 20, 2024	11:00 AM	SASED Administrative Center
April 17, 2024	11:00 AM	SASED Administrative Center
May 22, 2024	11:00 AM	SASED Administrative Center
June 12, 2024	11:00 AM	SASED Administrative Center

SY23-24 GOVERNING BOARD MEETING DATES

August 19, 2023	6:30 PM	SASED Administrative Center
January 24, 2024 (Joint with BOD)	6:30 PM	SASED Administrative Center
May 29, 2024	6:30 PM	SASED Administrative Center

Published in Daily Herald July 9, 2023 (4602379)

CERTIFICATE OF PUBLICATION

Paddock Publications, Inc.

**DuPage County
Daily Herald**

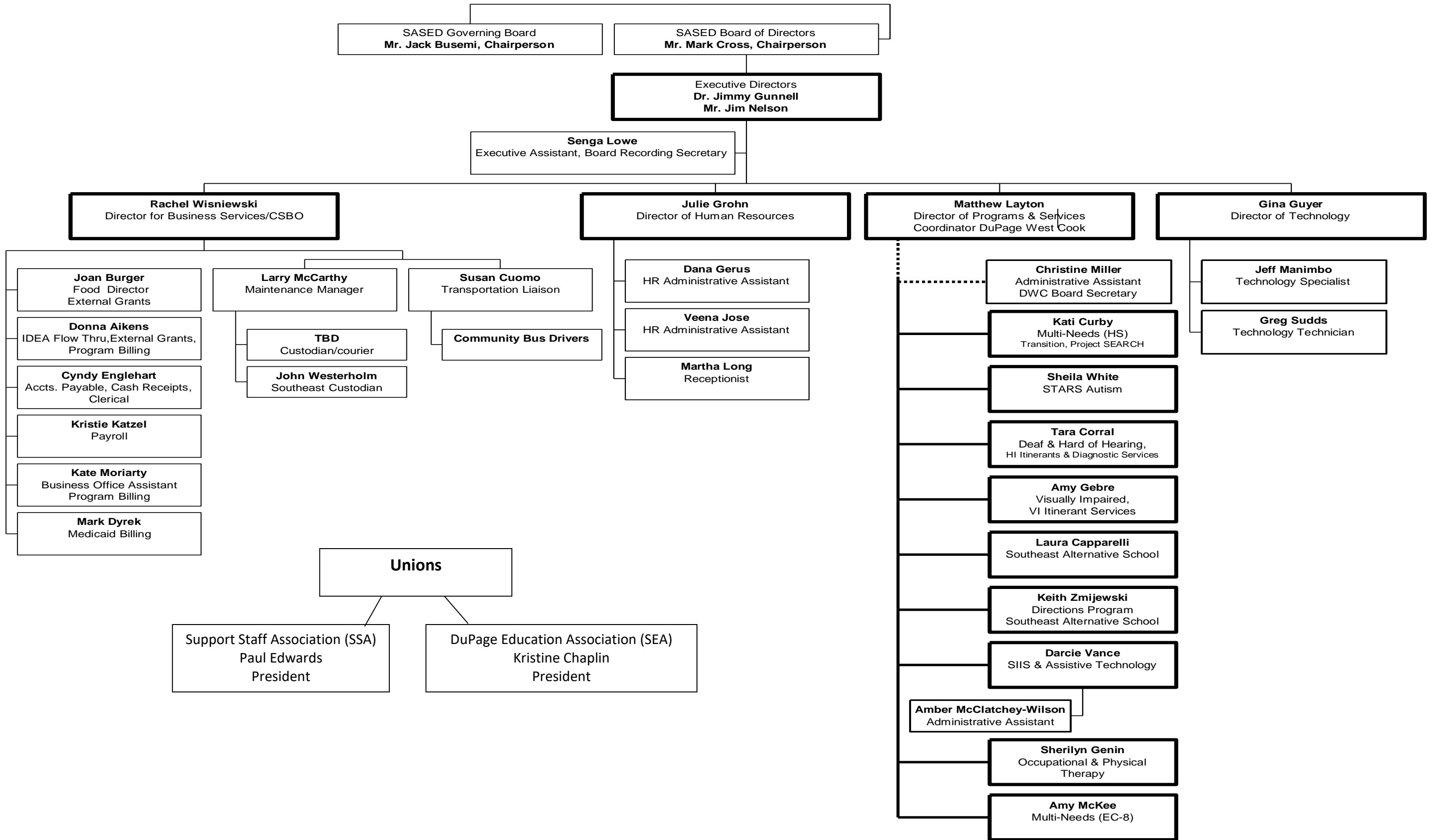
Corporation organized and existing under and by virtue of the laws of the State of Illinois, DOES HEREBY CERTIFY that it is the publisher of the **DuPage County DAILY HERALD**. That said **DuPage County DAILY HERALD** is a secular newspaper, published in Naperville, DuPage County, State of Illinois, and has been in general circulation daily throughout DuPage County, continuously for more than 50 weeks prior to the first Publication of the attached notice, and a newspaper as defined by 715 ILCS 5/5.

I further certify that the **DuPage County DAILY HERALD** is a newspaper as defined in "an Act to revise the law in relation to notices" as amended in 1992 Illinois Compiled Statutes, Chapter 715, Act 5, Section 1 and 5. That a notice of which the annexed printed slip is a true copy, was published 07/09/2023 in said **DuPage County DAILY HERALD**. This notice was also placed on a statewide public notice website as required by 5 ILCS 5/2.1.

BY *Daule Baltz*
Designee of the Publisher of the Daily Herald

Control # 4602379





Southeast Alternative School

**Directions Program
and Southeast Administrator**

Laura Capparelli
Program Administrator

Keith Zmijewski
Program Administrator

Michelle Whitfield
Administrative Assistant

Behavior M.S.

Nurse

Speech Therapist

P.E./Health/Computer

OT

Art

School Psychologist

Social Workers

Primary-Intermediate
K-5

Middle School
6-8

High School
9-12

Southeast H.S

**Southeast
Middle School
(6-8)**

**Southeast
Intermediate
(3-5)**

Multi-Needs Program

Amy McKee
Program Administrator

Kati Curby
Program Administrator

Olivia Medina
Administrative Assistant
for Amy McKee

Movement Therapist

Recreation Therapist
Art Therapist

Nurses

Speech Therapists

Social Workers

School Psychologist

Katrina Johnson
Administrative Assistant
for Kati Curby

Early Childhood

Concord School
District 63
1 Classroom
1 Medical Classroom

Holmes
District 60
1 Classroom

Primary K-2

Kingsley
District 58
1 Medical Classroom

Winfield
District 34
1 Classroom

Hillcrest Primary
District 58
1 Classroom

Waterbury
District 20
1 Classroom

Holmes
District 60
1 Classroom

Intermediate 3-5

Kingsley
District 58
1 Medical Classroom

Prairieview
District 66
2 Classrooms

Waterbury
District 20
1 Classroom

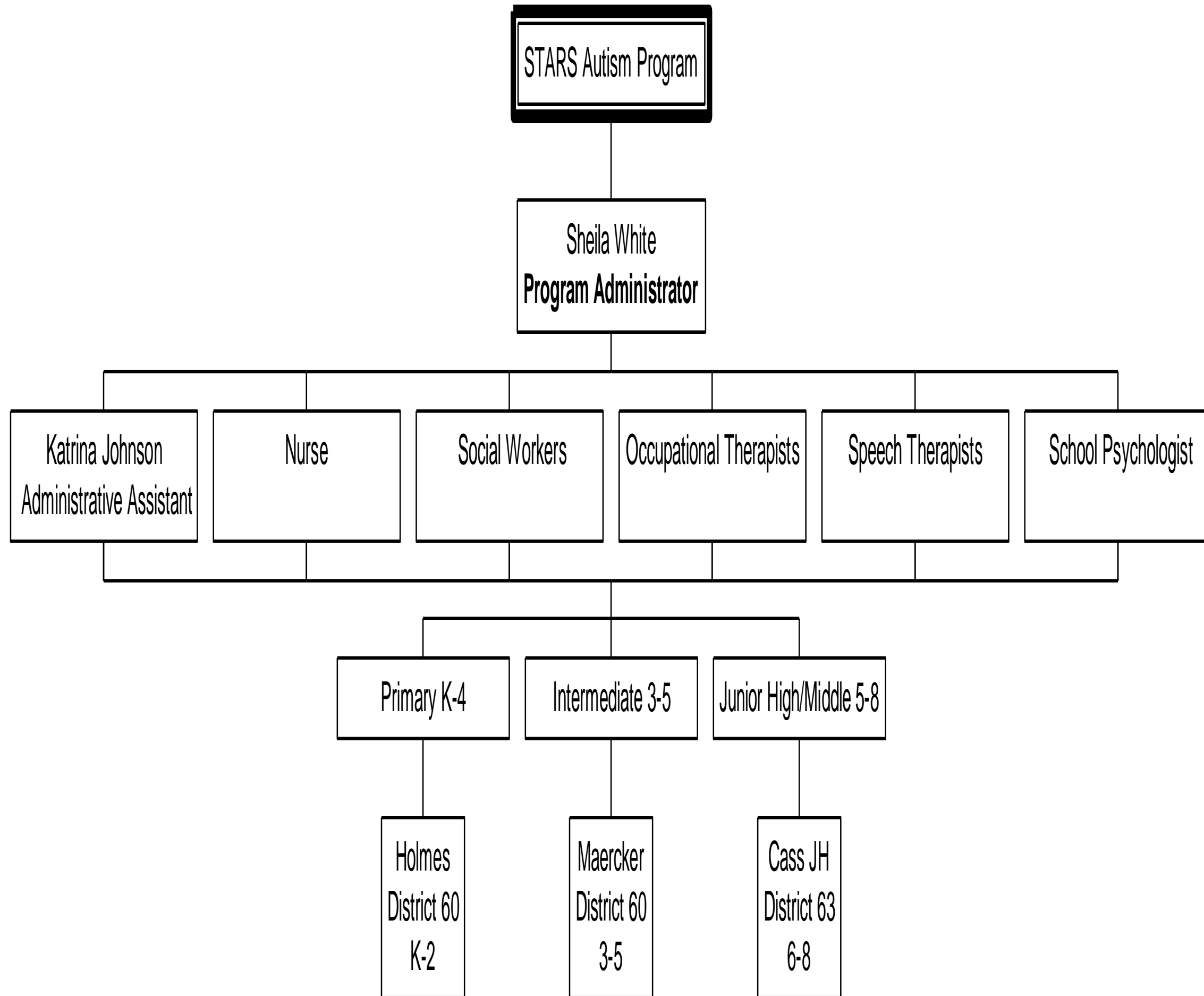
Junior High 6-8

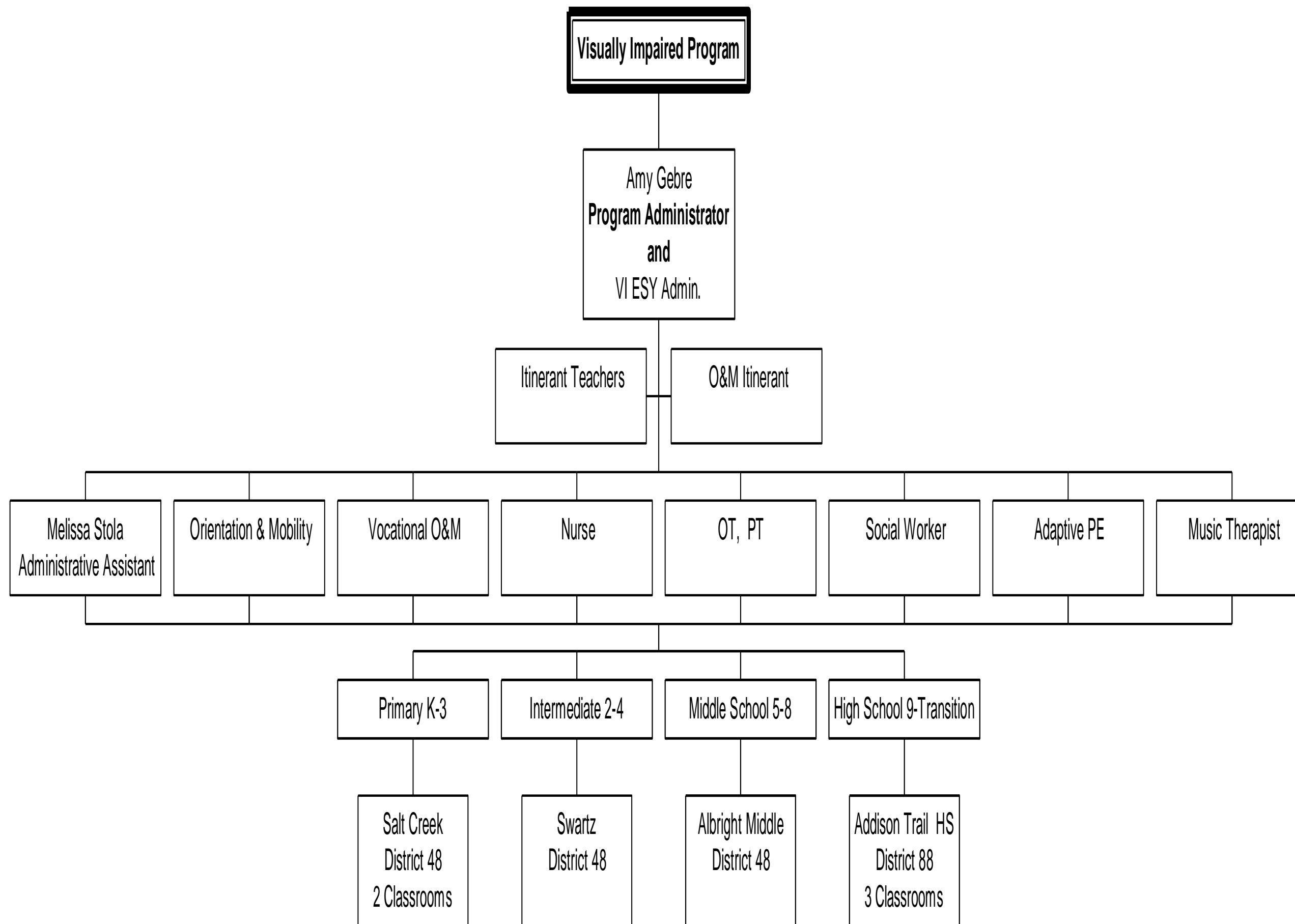
O'Neill
District 58
1 Classroom
1 Medical Classroom

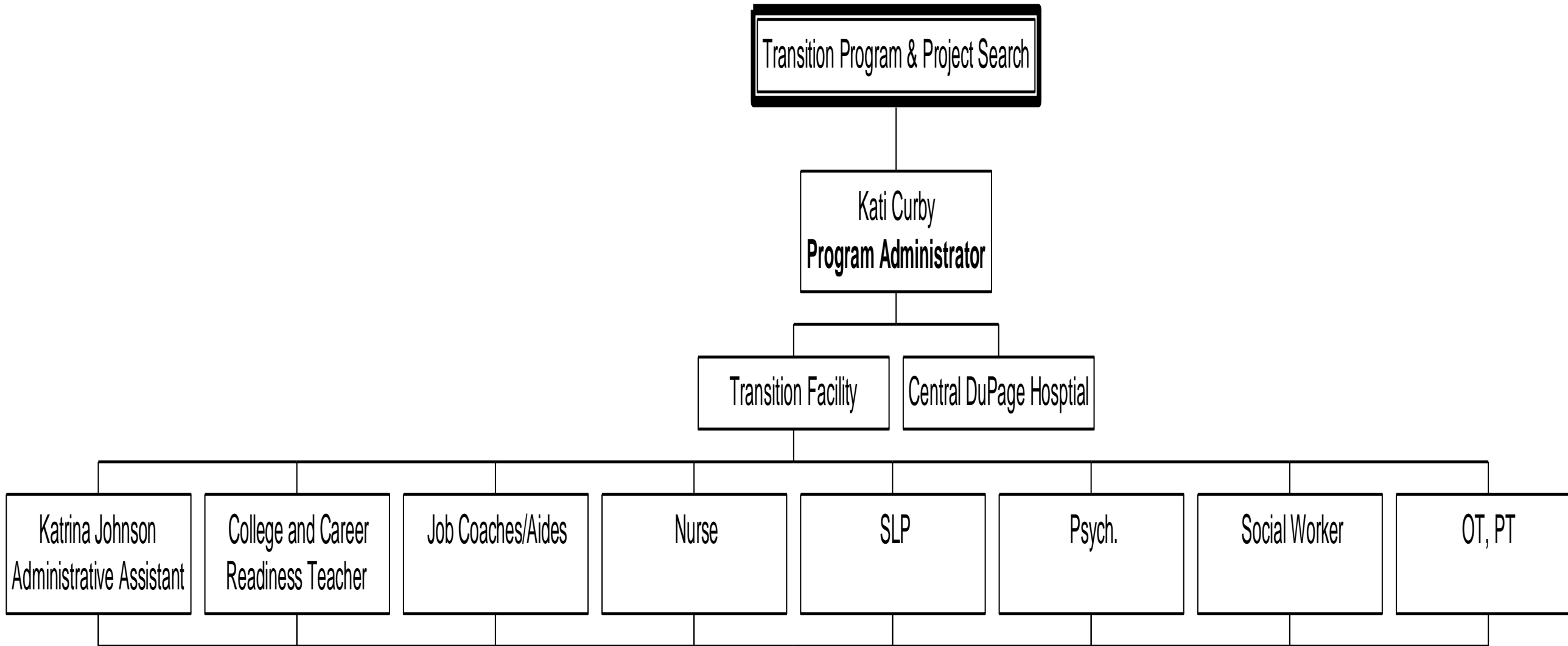
Winfield
District 34
1 Classroom
(5-8)

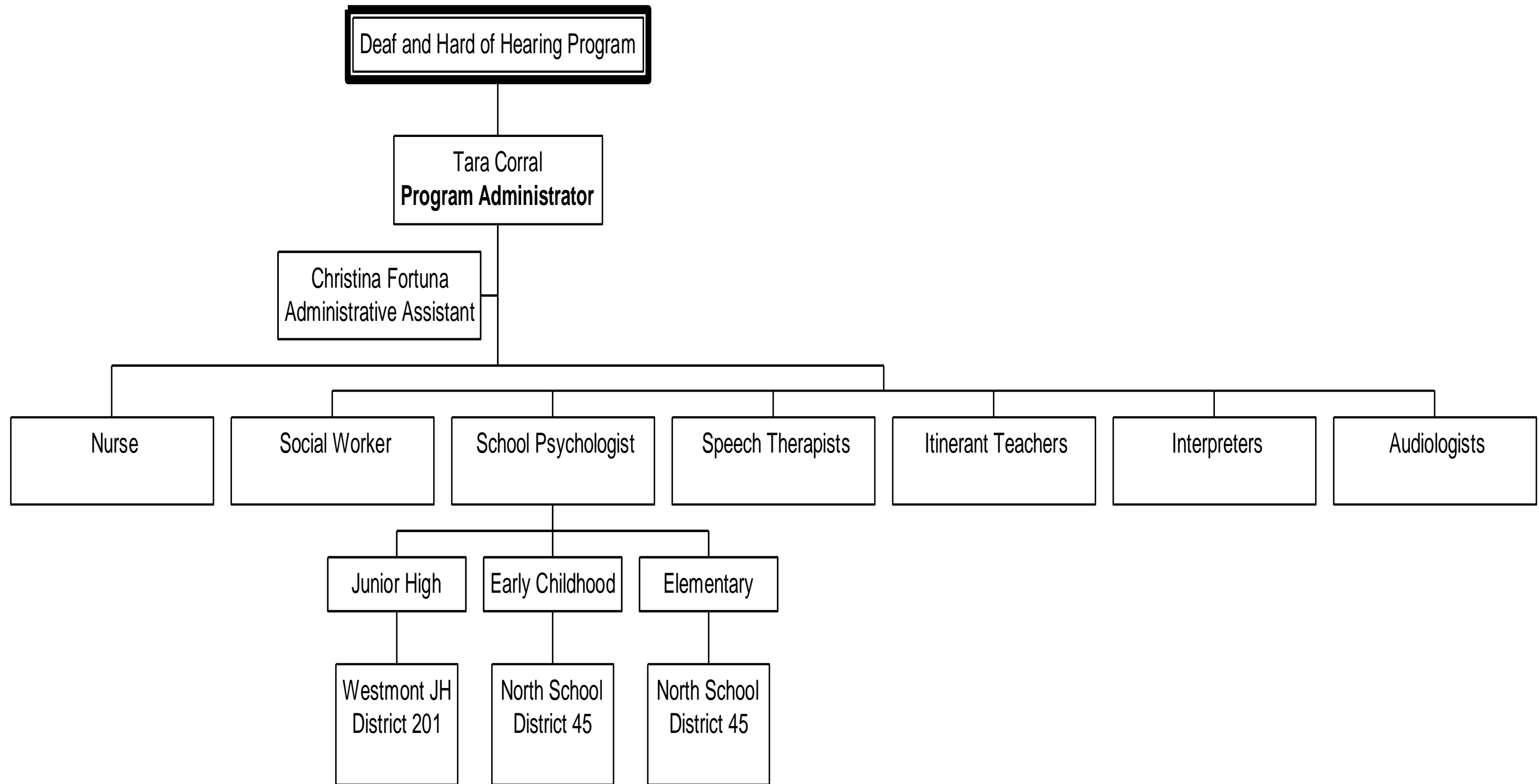
High School

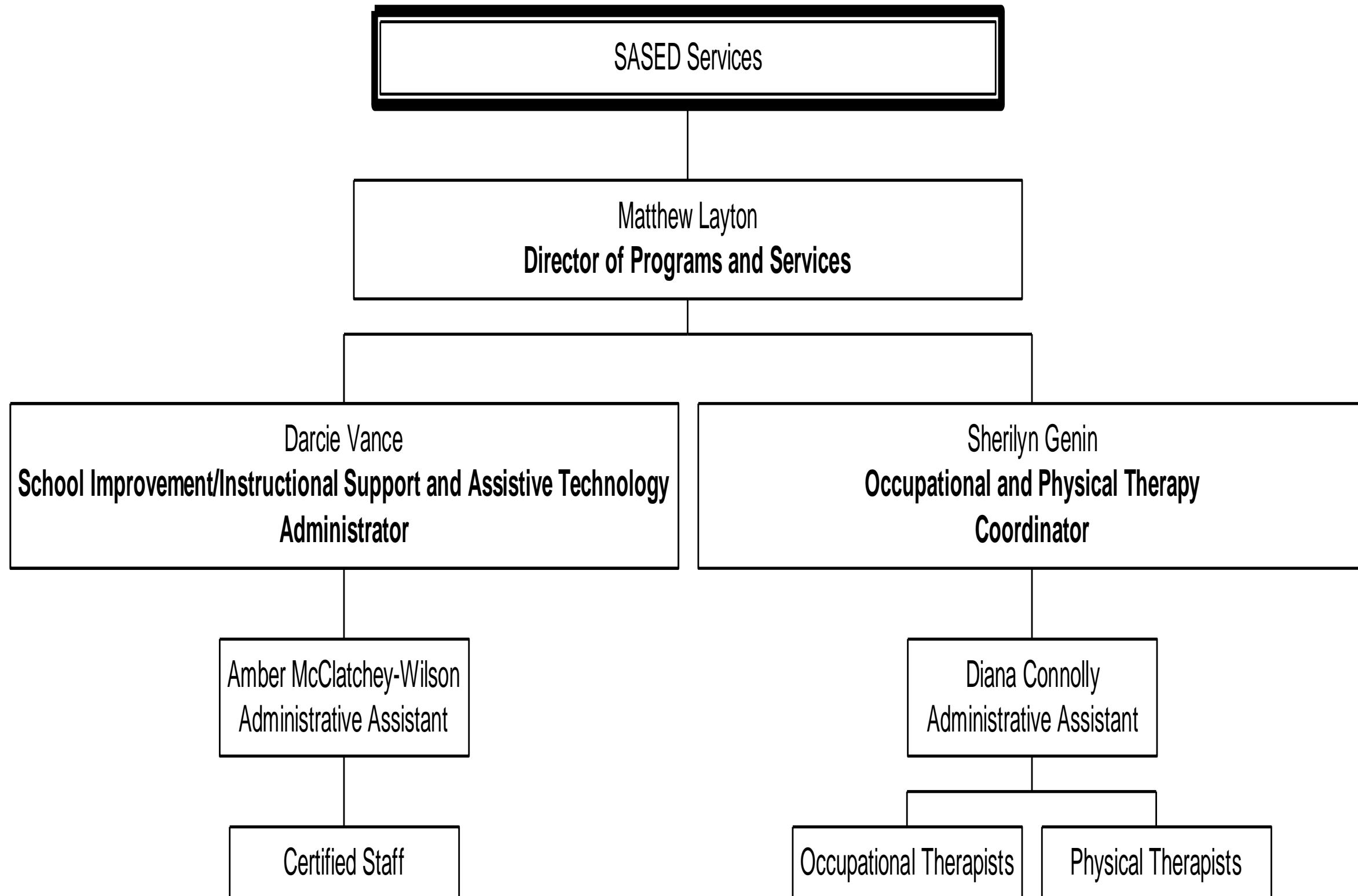
Willowbrook HS
District 88
2 Classrooms
1 Medical Classroom

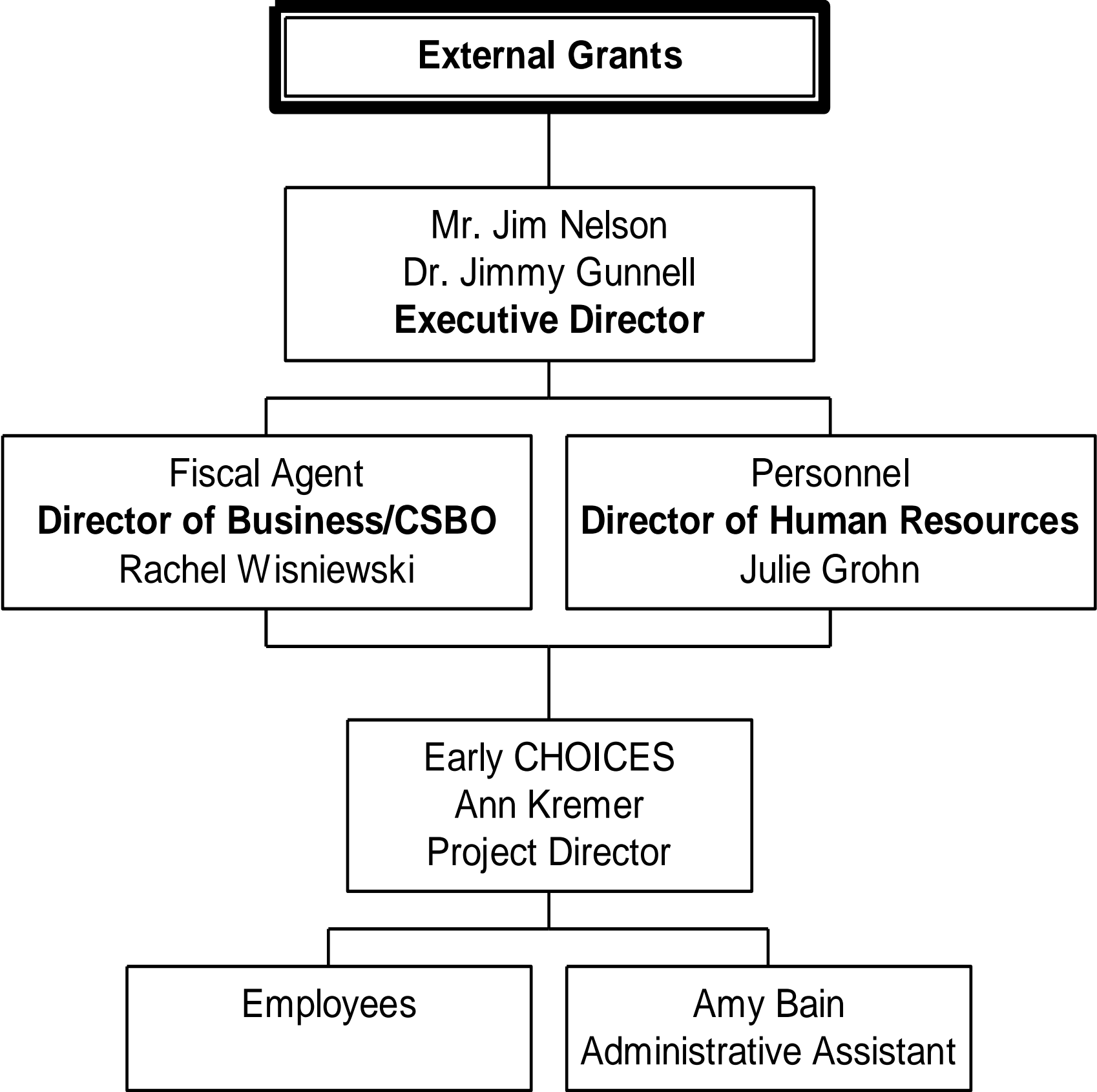












4. Public Comment - No public comments

5. Election of Officers/Designees

- a. Nominate a Chairperson Pro-Tempore

A motion was made to nominate Dr. Mindy McGuffin, Executive Director, as the Pro-Tem Chairperson for the Governing Board 5-31-23 meeting. Being the only candidate nominated as the Pro-Tem Chairperson, the Chairperson hereby declares him/her elected by acclamation.

Pro-Tempore Chairperson, Dr. Mindy McGuffin, was seated and meeting was continued.

- b. Election of a new Chairperson, 1 year term

With only one nomination, a motion was made to elect Jack Buscemi, Benjamin School District 25, as the Chairperson for the SY23-24 Governing Board.

Being the only candidate nominated for the office of Chairperson, the Pro-Tem Chairperson hereby declares Mr. Jack Buscemi elected by acclamation.

Newly elected Chairperson, Jack Buscemi, was seated and meeting was continued.

- c. Election of a new Vice-Chairperson, 1 year term

With only one nomination, a motion was made to elect Mr. James Blair, Salt Creek School District 48, as the Vice-Chairperson for the SY23-24 Governing Board.

Being the only candidate nominated for the office of Vice-Chairperson, the Chairperson hereby declares Mr. James Blair elected by acclamation.

Newly elected Vice-Chairperson, Mr. James Blair, was seated and meeting was continued.

- d. Election of a new Secretary, 1 year term

With only one nomination, a motion was made to elect Mr. Tom Ruggio, Woodridge School District 68, as the Secretary for the SY23-24 Governing Board.

Being the only candidate nominated for the office of Secretary, the Chairperson hereby declares Mr. Tom Ruggio elected by acclamation.

Newly elected Secretary, Mr. Tom Ruggio, was seated and meeting was continued.

6. Discussion/Information

- a. Discussion of the amended Articles of Joint Agreement, effective May 1, 2023, was led by Dr. McGuffin.
- b. Board Committees discussion and committee membership - Dr. McGuffin presented the Committee Rotation draft and asked for Governing Board participation. The importance of Governing Board membership on these committees was voiced by Member Conover. Members to communicate with Mark Cross, Chairperson of the Board of Directors, and Dr. McGuffin, if they have an interest in committee participation. Membership will be confirmed at the August 9, 2023 meeting.

7. Discussion with Action

- a. Approved the Meeting Minutes from January 25, 2023.
A motion was made to approve the January 25, 2023 Meeting Minutes as presented. This motion, made by Member Blair and seconded by Member Craft-Cain, Passed.

Upon Roll Call Vote:

Ayes:	Keeneyville School District 20	Terry Walloch
	Benjamin School District 25	Jack Buscemi
	West Chicago Elementary School District 33	Tom Doyle
	Salt Creek School District 48	Jim Blair
	Downers Grove School District 58	Emily Hanus
	Cass School District 63	Liz Mitha
	Center Cass School District 66	Liane Raso
	Woodridge School District 68	Tom Ruggio
	DuPage High School District 88	Donna Craft-Cain
	Westmont Community Unit School District 201	Leah Conover
	Lisle Community Unit School District 202	Steve Lesniak
	Elmhurst Community Unit School District 205	Beth Hosler

Absent: Winfield School District 34
DuPage County School District 45
Maercker District 60
Community High School District 94
Community High School District 99
Community Consolidated School District 180

Ayes: 12 Districts **Nays:** none **Absent:** 6 Districts

- b. Approved the Meeting Dates, Times and Location for SY23-24.
A motion was made to approve the SY23-24 Meeting Dates, Times and Location as presented. This motion, made by Member Conover and seconded by Member Lesniak, Passed.

Upon Roll Call Vote:

Ayes:	Keeneyville School District 20	Terry Walloch
	Benjamin School District 25	Jack Buscemi
	West Chicago Elementary School District 33	Tom Doyle
	Salt Creek School District 48	Jim Blair
	Downers Grove School District 58	Emily Hanus
	Cass School District 63	Liz Mitha
	Center Cass School District 66	Liane Raso
	Woodridge School District 68	Tom Ruggio
	DuPage High School District 88	Donna Craft-Cain
	Westmont Community Unit School District 201	Leah Conover
	Lisle Community Unit School District 202	Steve Lesniak
	Elmhurst Community Unit School District 205	Beth Hosler

Absent: Winfield School District 34
DuPage County School District 45
Maercker District 60
Community High School District 94

Community High School District 99
Community Consolidated School District 180

Ayes: 12 Districts **Nays:** none **Absent:** 6 Districts

- c. Approved the 2024 Tentative Budget for Public Display and Set the Date for Public Hearing.
Dr. McGuffin presented the FY24 Tentative Budget.
A motion was made to approve the 2024 Tentative Budget for Public Display as presented and set the date for public hearing as August 9, 2023, 6:30pm., at the SASED Administrative Center. This motion, made by Member Conover and seconded by Member Blair, Passed.

Upon Roll Call Vote:

Ayes:	Keeneyville School District 20	Terry Walloch
	Benjamin School District 25	Jack Buscemi
	West Chicago Elementary School District 33	Tom Doyle
	Salt Creek School District 48	Jim Blair
	Downers Grove School District 58	Emily Hanus
	Cass School District 63	Liz Mitha
	Center Cass School District 66	Liane Raso
	Woodridge School District 68	Tom Ruggio
	DuPage High School District 88	Donna Craft-Cain
	Westmont Community Unit School District 201	Leah Conover
	Lisle Community Unit School District 202	Steve Lesniak
	Elmhurst Community Unit School District 205	Beth Hosler

Absent: Winfield School District 34
DuPage County School District 45
Maercker District 60
Community High School District 94
Community High School District 99
Community Consolidated School District 180

Ayes: 12 Districts **Nays:** none **Absent:** 6 Districts

8. Adjournment

A motion was made to adjourn at 7:24pm. This Motion, made by Member Raso and seconded by Member Blair, Passed.

Upon voice vote of all ayes from 12 districts present, motion carried.

Minutes Approved by:

Jack Buscemi
Chairperson Date

Tom Ruggio
Secretary Date



School Association for Special Education in DuPage
Melinda McGuffin, Ed.D.
Executive Director

TO: SASED Governing Board Members
FROM: Rachel Wisniewski, Director of Business Services/CSBO
DATE: August 9, 2023
RE: FY24 Budget Public Hearing and Budget Approval

Purpose: The Governing Board is required to hold a budget public hearing and then approve the FY24 budget prior to September 1, 2023.

Background: A tentative FY24 budget was presented at the Governing Board's January 25, 2023, meeting. At the Governing Board's May 31, 2023 meeting, the tentative budget was approved, placed on file for public viewing for a minimum of thirty days, a public hearing was scheduled for August 9, 2023, and the administration was directed to place a legal notice in an area newspaper. The legal notice was published in accordance with state statutes.

Next Steps:

1. Hold a public hearing to provide the public with an opportunity for comment.
2. Adopt the resolution and approve the budget following the hearing.
3. Ms. Wisniewski will file the budget documents as required.

District Type:

- School District
- Joint Agreement

ILLINOIS STATE BOARD OF EDUCATION
School Business Services Division

SCHOOL DISTRICT/JOINT AGREEMENT BUDGET FORM *
July 1, 2023 - June 30, 2024

Accounting Basis:

- Cash
- Accrual

Is this an amended budget? No _____

Date of Amended Budget: _____
(MM/DD/YY)

District Name: School Assn For Special Educ

District RCDT No: 19022803060

Deficit Reduction Plan is not required

If your FY2023 AFR states that you need to do a deficit reduction plan and your FY2024 budget is balanced, please state the measures you took to have your budget become balanced. (Bckgrnd-Assumpt 25-26)

Budget of School Assn For Special Educ, County of DuPage, State of Illinois, for the Fiscal Year beginning July 1, 2023 and ending June 30, 2024.

WHEREAS the Board of Education of School Assn For Special Educ, County of DuPage, State of Illinois, caused to be prepared in tentative form a budget, and the Secretary of this Board has made the same conveniently available to public inspection for at least thirty days prior to final action thereon;

AND WHEREAS a public hearing was held as to such budget on the 9 day of August, 20 23, notice of said hearing was given at least thirty days prior thereto as required by law, and all other legal requirements have been complied with;

NOW, THEREFORE, Be it resolved by the Board of Education of said district as follows:

Section 1: That the fiscal year of this school district be and the same hereby is fixed and declared to be beginning July 1, 2023 and ending June 30, 2024.

Section 2: That the following budget containing an estimate of amounts available in each Fund, separately, and expenditures from each be and the same is hereby adopted as the budget of this school district for said fiscal year.

ADOPTION OF BUDGET

The budget shall be approved and signed below by members of the School Board. Adopted this 9th day of August, 20 23 by a roll call vote of _____ Yeas, and _____ Nays, to wit:

** MEMBERS VOTING YEA:	** MEMBERS VOTING NAY:

* Based on the 23 Illinois Administrative Code-Part 100 and inconformity with Section 17-1 of the School Code.
 ** Type in the members who voted "YEA" nor "NAY". Actual school board member signatures are not required for electronic submission.
 (1) A certified copy of this document must be filed with the county clerk within 30 days of adoption as required by Section 18-50 of the Property Tax Code (35 ILCS 200/18-50).
 (2) Districts are required to submit the adopted/amended budget electronically to ISBE within 30 days of adoption or by October 30, whichever comes first. Budgets are submitted through IWAS: <https://apps.isbe.net/iwas/asp/login.asp?js=true>
 Please type the member signatures before submitting to ISBE. We do not accept PDF copies.

	A	B	C	D	E	F	G	H	I	J	K	L
1	<i>Begin entering data on EstRev 6-11 and EstExp 12-20 tabs.</i>		(10)	(20)	(30)	(40)	(50)	(60)	(70)	(80)	(90)	
2	Description: Enter Whole Numbers Only	Acct #	Educational	Operations & Maintenance	Debt Service	Transportation	Municipal Retirement/ Social Security	Capital Projects	Working Cash	Tort	Fire Prevention & Safety	
3	ESTIMATED BEGINNING FUND BALANCE (without Student Activity Funds) ¹ as of July 1, 2023		5,943,335	531,865	0	0	0	0	0	0	0	0
4	RECEIPTS/REVENUES (without Student Activity Funds)											
5	LOCAL SOURCES	1000	31,528,294	192,000	0	0	0	0	0	0	0	0
6	FLOW-THROUGH RECEIPTS/REVENUES FROM ONE DISTRICT TO ANOTHER DISTRICT	2000	869,228	0		0	0					
7	STATE SOURCES	3000	3,676,007	50,000	0	0	0	0	0	0	0	0
8	FEDERAL SOURCES	4000	1,932,537	0	0	0	0	0	0	0	0	0
9	Total Direct Receipts/Revenues ⁸		38,006,066	242,000	0	0	0	0	0	0	0	0
10	Receipts/Revenues for "On Behalf" Payments ²	3998										
11	Total Receipts/Revenues		38,006,066	242,000	0	0	0	0	0	0	0	0
12	DISBURSEMENTS/EXPENDITURES (without Student Activity Funds)											
13	INSTRUCTION	1000	21,811,542				0				0	
14	SUPPORT SERVICES	2000	16,627,296	740,429		0	0	0			0	0
15	COMMUNITY SERVICES	3000	0	0		0	0				0	
16	PAYMENTS TO OTHER DISTRICTS & GOVT UNITS	4000	0	0	0	0	0	0			0	0
17	DEBT SERVICES	5000	0	0	0	0	0				0	0
18	PROVISION FOR CONTINGENCIES	6000	0	0	0	0	0	0			0	0
19	Total Direct Disbursements/Expenditures ⁹		38,438,838	740,429	0	0	0	0			0	0
20	Disbursements/Expenditures for "On Behalf" Payments ²	4180	0	0	0	0	0	0			0	0
21	Total Disbursements/Expenditures		38,438,838	740,429	0	0	0	0			0	0
22	Excess of Direct Receipts/Revenues Over (Under) Direct Disbursements/Expenditures		(432,772)	(498,429)	0	0	0	0	0	0	0	0
23	OTHER SOURCES/USES OF FUNDS											
24	OTHER SOURCES OF FUNDS (7000)											
25	PERMANENT TRANSFER FROM VARIOUS FUNDS											
26	Abolishment the Working Cash Fund ¹⁶	7110										
27	Abatement of the Working Cash Fund ¹⁶	7110										
28	Transfer of Working Cash Fund Interest	7120										
29	Transfer Among Funds	7130										
30	Transfer of Interest	7140										
31	Transfer from Capital Projects Fund to O&M Fund	7150		0								
32	Transfer of Excess Fire Prev & Safety Tax & Interest ³ Proceeds to O&M Fund	7160		0								
33	Transfer of Excess Accumulated Fire Prev & Safety Bond and Int ^{3a} Proceeds to Debt Service Fund	7170			0							
34	SALE OF BONDS (7200)											
35	Principal on Bonds Sold ⁴	7210										
36	Premium on Bonds Sold	7220										
37	Accrued Interest on Bonds Sold	7230										
38	Sale or Compensation for Fixed Assets ⁵	7300										
39	Transfer to Debt Service to Pay Principal on GASB 87 Leases	7400			0							
40	Transfer to Debt Service to Pay Interest on GASB 87 Leases	7500			0							
41	Transfer to Debt Service Fund to Pay Principal on Revenue Bonds	7600			0							
42	Transfer to Debt Service Fund to Pay Interest on Revenue Bonds	7700			0							
43	Transfer to Capital Projects Fund	7800						0				
44	ISBE Loan Proceeds	7900										
45	Other Sources Not Classified Elsewhere	7990										
46	Total Other Sources of Funds ⁸		0	0	0	0	0	0	0	0	0	0

	A	B	C	D	E	F	G	H	I	J	K	L
1	Begin entering data on EstRev 6-11 and EstExp 12-20 tabs.		(10)	(20)	(30)	(40)	(50)	(60)	(70)	(80)	(90)	
2	Description: Enter Whole Numbers Only	Acct #	Educational	Operations & Maintenance	Debt Service	Transportation	Municipal Retirement/ Social Security	Capital Projects	Working Cash	Tort	Fire Prevention & Safety	
47	OTHER USES OF FUNDS (8000)											
49	TRANSFER TO VARIOUS OTHER FUNDS (8100)											
50	Abolishment or Abatement of the Working Cash Fund ¹⁶	8110							0			
51	Transfer of Working Cash Fund Interest	8120							0			
52	Transfer Among Funds	8130										
53	Transfer of Interest ⁶	8140										
54	Transfer from Capital Projects Fund to O&M Fund	8150										
55	Transfer of Excess Fire Prev & Safety Tax & Interest ³ Proceeds to O&M Fund	8160										
56	Transfer of Excess Accumulated Fire Prev & Safety Bond ^{3a} and Int Proceeds to Debt Service Fund	8170										
57	Taxes Pledged to Pay Principal on GASB 87 Leases	8410										
58	Grants/Reimbursements Pledged to Pay Principal on GASB 87 Leases	8420										
59	Other Revenues Pledged to Pay Principal on GASB 87 Leases	8430										
60	Fund Balance Transfers Pledged to Pay Principal on GASB 87 Leases	8440										
61	Taxes Pledged to Pay Interest on GASB 87 Leases	8510										
62	Grants/Reimbursements Pledged to Pay Interest on GASB 87 Leases	8520										
63	Other Revenues Pledged to Pay Interest on GASB 87 Leases	8530										
64	Fund Balance Transfers Pledged to Pay Interest on GASB 87 Leases	8540										
65	Taxes Pledged to Pay Principal on Revenue Bonds	8610										
66	Grants/Reimbursements Pledged to Pay Principal on Revenue Bonds	8620										
67	Other Revenues Pledged to Pay Principal on Revenue Bonds	8630										
68	Fund Balance Transfers Pledged to Pay Principal on Revenue Bonds	8640										
69	Taxes Pledged to Pay Interest on Revenue Bonds	8710										
70	Grants/Reimbursements Pledged to Pay Interest on Revenue Bonds	8720										
71	Other Revenues Pledged to Pay Interest on Revenue Bonds	8730										
72	Fund Balance Transfers Pledged to Pay Interest on Revenue Bonds	8740										
73	Taxes Transferred to Pay for Capital Projects	8810										
74	Grants/Reimbursements Pledged to Pay for Capital Projects	8820										
75	Other Revenues Pledged to Pay for Capital Projects	8830										
76	Fund Balance Transfers Pledged to Pay for Capital Projects	8840										
77	Transfer to Debt Service Fund to Pay Principal on ISBE Loans	8910										
78	Other Uses Not Classified Elsewhere	8990										
79	Total Other Uses of Funds⁹		0	0	0	0	0	0	0	0	0	0
80	Total Other Sources/Uses of Fund		0	0	0	0	0	0	0	0	0	0
81	ESTIMATED ENDING FUND BALANCE (without Student Activity Funds) as of June 30, 2024		5,510,563	33,436	0	0	0	0	0	0	0	0
82												
83	Student Activity (Fund 11) ESTIMATED BEGINNING FUND BALANCE as of July 1, 2023		46,994									
84	RECEIPTS/REVENUES (For Student Activity Funds)											
85	Total Student Activity Direct Receipts/Revenues (Local Sources)	1799	0									
86	DISBURSEMENTS/EXPENDITURES (For Student Activity Funds)											
87	Total Student Activity Direct Disbursements/Expenditures	1999	0									
88	Excess of Direct Receipts/Revenues Over (Under) Direct Disbursements/Expenditures		0									
89	Student Activity ESTIMATED ENDING FUND BALANCE as of June 30, 2024		46,994									
90												

	A	B	C	D	E	F	G	H	I	J	K	L
1	<i>Begin entering data on EstRev 6-11 and EstExp 12-20 tabs.</i>		(10)	(20)	(30)	(40)	(50)	(60)	(70)	(80)	(90)	
2	Description: Enter Whole Numbers Only	Acct #	Educational	Operations & Maintenance	Debt Service	Transportation	Municipal Retirement/ Social Security	Capital Projects	Working Cash	Tort	Fire Prevention & Safety	
91	Total ESTIMATED BEGINNING FUND BALANCE (All Sources Including Student Activity Funds) as of July 1, 2023		5,990,329	531,865	0	0	0	0	0	0	0	0
92	RECEIPTS/REVENUES (All Sources with Student Activity Funds)											
93	LOCAL SOURCES	1000	31,528,294	192,000	0	0	0	0	0	0	0	0
94	FLOW-THROUGH RECEIPTS/REVENUES FROM ONE DISTRICT TO ANOTHER DISTRICT	2000	869,228	0		0	0					
95	STATE SOURCES	3000	3,676,007	50,000	0	0	0	0	0	0	0	0
96	FEDERAL SOURCES	4000	1,932,537	0	0	0	0	0	0	0	0	0
97	Total Direct Receipts/Revenues ⁶		38,006,066	242,000	0	0	0	0	0	0	0	0
98	Receipts/Revenues for "On Behalf" Payments ²	3998	0	0	0	0	0	0		0	0	0
99	Total Receipts/Revenues		38,006,066	242,000	0	0	0	0	0	0	0	0
100	DISBURSEMENTS/EXPENDITURES (All Sources with Student Activity Funds)											
101	INSTRUCTION	1000	21,811,542				0			0		
102	SUPPORT SERVICES	2000	16,627,296	740,429		0	0	0		0	0	0
103	COMMUNITY SERVICES	3000	0	0		0	0			0		
104	PAYMENTS TO OTHER DISTRICTS & GOVT UNITS	4000	0	0	0	0	0	0		0	0	0
105	DEBT SERVICES	5000	0	0	0	0	0			0	0	0
106	PROVISION FOR CONTINGENCIES	6000	0	0	0	0	0	0		0	0	0
107	Total Direct Disbursements/Expenditures ⁹		38,438,838	740,429	0	0	0	0		0	0	0
108	Disbursements/Expenditures for "On Behalf" Payments ²	4180	0	0	0	0	0	0		0	0	0
109	Total Disbursements/Expenditures		38,438,838	740,429	0	0	0	0		0	0	0
110	Excess of Direct Receipts/Revenues Over (Under) Direct Disbursements/Expenditures		(432,772)	(498,429)	0	0	0	0	0	0	0	0
111	OTHER SOURCES/USES OF FUNDS											
112	OTHER SOURCES OF FUNDS (7000)											
113	Total Other Sources of Funds ⁸		0	0	0	0	0	0	0	0	0	0
114	OTHER USES OF FUNDS (8000)											
116	Total Other Uses of Funds ⁹		0	0	0	0	0	0	0	0	0	0
117	Total Other Sources/Uses of Fund		0	0	0	0	0	0	0	0	0	0
118	ESTIMATED ENDING FUND BALANCE (All Sources with Student Activity Funds) as of June 30, 2024		5,557,557	33,436	0	0	0	0	0	0	0	0
119												
120	SUMMARY OF EXPENDITURES Without Student Activity Funds (by Major Object)											
121			(10)	(20)	(30)	(40)	(50)	(60)	(70)	(80)	(90)	
122	Description	Acct #	Educational	Operations & Maintenance	Debt Service	Transportation	Municipal Retirement/ Social Security	Capital Projects	Working Cash	Tort	Fire Prevention & Safety	Total By Object
123	Object Name											
124	Salaries	100	21,488,304	0		0		0		0	0	21,488,304
125	Employee Benefits	200	5,951,032	0		0	0	0		0	0	5,951,032
126	Purchased Services	300	8,704,469	51,200	0	0		0		0	0	8,755,669
127	Supplies & Materials	400	892,071	0		0		0		0	0	892,071
128	Capital Outlay	500	1,262,092	689,229		0		0		0	0	1,951,321
129	Other Objects	600	0	0	0	0	0	0		0	0	0
130	Non-Capitalized Equipment	700	140,870	0		0		0		0	0	140,870
131	Termination Benefits	800	0	0		0				0		0
132	Total Expenditures		38,438,838	740,429	0	0	0	0		0	0	39,179,267

Summary of Cash Transactions

	A	B	C	D	E	F	G	H	I	J	K
1			(10)	(20)	(30)	(40)	(50)	(60)	(70)	(80)	(90)
2	Description: Enter Whole Numbers Only	Acct #	Educational	Operations & Maintenance	Debt Service	Transportation	Municipal Retirement/ Social Security	Capital Projects	Working Cash	Tort	Fire Prevention & Safety
3	BEGINNING CASH BALANCE ON HAND (without Student Activity Funds)⁷ as of July 1, 2023		11,311,401	531,865	0	0	0	0	0	0	0
4	Total Direct Receipts & Other Sources⁸		38,006,066	242,000	0	0	0	0	0	0	0
5	OTHER RECEIPTS										
6	Interfund Loans Payable (Loans from Other Funds)	411									
7	Interfund Loans Receivable (Repayment of Loans)	141									
8	Notes and Warrants Payable	433									
9	Other Current Assets	199									
10	Total Other Receipts		0	0	0	0	0	0	0	0	0
11	Total Direct Receipts, Other Sources, & Other Receipts		38,006,066	242,000	0	0	0	0	0	0	0
12	Total Amount Available		49,317,467	773,865	0	0	0	0	0	0	0
13	Total Direct Disbursements & Other Uses⁹		38,438,838	740,429	0	0	0	0	0	0	0
14	OTHER DISBURSEMENTS										
15	Interfund Loans Receivable (Loans to Other Funds) ¹⁰	141									
16	Interfund Loans Payable (Repayment of Loans)	411									
17	Notes and Warrants Payable	433									
18	Other Current Liabilities	499									
19	Total Other Disbursements		0	0	0	0	0	0	0	0	0
20	Total Direct Disbursements, Other Uses, & Other Disbursements		38,438,838	740,429	0	0	0	0	0	0	0
21	ENDING CASH BALANCE ON HAND (without Student Activity Funds) as of June 30, 2024		10,878,629	33,436	0	0	0	0	0	0	0
22											
23	Activity Funds BEGINNING CASH BALANCE ON HAND⁷ as of July 1, 2023		46,994								
24	Total Direct Receipts & Other Sources⁸		0								
25	Total Amount Available		46,994								
26	Total Direct Disbursements & Other Uses⁹		0								
27	Activity funds ENDING CASH BALANCE ON HAND⁷ as of June 30, 2024		46,994								
28											
29	Total BEGINNING CASH BALANCE ON HAND (with Student Activity Funds)⁷ as of July 1, 2023		11,358,395	531,865	0	0	0	0	0	0	0
30	Total Direct Receipts & Other Sources⁸		38,006,066	242,000	0	0	0	0	0	0	0
31	Total Other Receipts		0	0	0	0	0	0	0	0	0
32	Total Direct Receipts, Other Sources, & Other Receipts		38,006,066	242,000	0	0	0	0	0	0	0
33	Total Amount Available		49,364,461	773,865	0	0	0	0	0	0	0
34	Total Direct Disbursements & Other Uses⁹		38,438,838	740,429	0	0	0	0	0	0	0
35	Total Other Disbursements		0	0	0	0	0	0	0	0	0
36	Total Direct Disbursements, Other Uses, & Other Disbursements		38,438,838	740,429	0	0	0	0	0	0	0
37	Total ENDING CASH BALANCE ON HAND (with Student Activity Funds)⁷ as of June 30, 2024		10,925,623	33,436	0	0	0	0	0	0	0

	A	B	C	D	E	F	G	H	I	J	K
1			(10)	(20)	(30)	(40)	(50)	(60)	(70)	(80)	(90)
2	Description: Enter Whole Numbers Only	Acct #	Educational	Operations & Maintenance	Debt Service	Transportation	Municipal Retirement/ Social Security	Capital Projects	Working Cash	Tort	Fire Prevention & Safety
3	RECEIPTS/REVENUES FROM LOCAL SOURCES (1000)										
4	AD VALOREM TAXES LEVIED BY LOCAL EDUCATION AGENCY	1100									
5	Designated Purposes Levies ¹¹ (1110-1120)	-									
6	Leasing Purposes Levy ¹²	1130									
7	Special Education Purposes Levy	1140									
8	FICA and Medicare Only Levies	1150									
9	Area Vocational Construction Purposes Levy	1160									
10	Summer School Purposes Levy	1170									
11	Other Tax Levies (Describe & Itemize)	1190									
12	Total Ad Valorem Taxes Levied by District		0	0	0	0	0	0	0	0	0
13	PAYMENTS IN LIEU OF TAXES	1200									
14	Mobile Home Privilege Tax	1210									
15	Payments from Local Housing Authority	1220									
16	Corporate Personal Property Replacement Taxes ¹³	1230									
17	Other Payments in Lieu of Taxes (Describe & Itemize)	1290									
18	Total Payments in Lieu of Taxes		0	0	0	0	0	0	0	0	0
19	TUITION	1300									
20	Regular Tuition from Pupils or Parents (In State)	1311									
21	Regular Tuition from Other Districts (In State)	1312									
22	Regular Tuition from Other Sources (In State)	1313									
23	Regular Tuition from Other Sources (Out of State)	1314									
24	Summer School Tuition from Pupils or Parents (In State)	1321									
25	Summer School Tuition from Other Districts (In State)	1322	293,002								
26	Summer School Tuition from Other Sources (In State)	1323									
27	Summer School Tuition from Other Sources (Out of State)	1324									
28	CTE Tuition from Pupils or Parents (In State)	1331									
29	CTE Tuition from Other Districts (In State)	1332									
30	CTE Tuition from Other Sources (In State)	1333									
31	CTE Tuition from Other Sources (Out of State)	1334									
32	Special Education Tuition from Pupils or Parents (In State)	1341									
33	Special Education Tuition from Other Districts (In State)	1342	16,842,065								
34	Special Education Tuition from Other Sources (In State)	1343									
35	Special Education Tuition from Other Sources (Out of State)	1344									
36	Adult Tuition from Pupils or Parents (In State)	1351									
37	Adult Tuition from Other Districts (In State)	1352									
38	Adult Tuition from Other Sources (In State)	1353									
39	Adult Tuition from Other Sources (Out of State)	1354									
40	Total Tuition		17,135,067								
41	TRANSPORTATION FEES	1400									
42	Regular Transportation Fees from Pupils or Parents (In State)	1411									
43	Regular Transportation Fees from Other Districts (In State)	1412									
44	Regular Transportation Fees from Other Sources (In State)	1413									
45	Regular Transportation Fees from Co-curricular Activities (In State)	1415									
46	Regular Transportation Fees from Other Sources (Out of State)	1416									
47	Summer School Transportation Fees from Pupils or Parents (In State)	1421									
48	Summer School Transportation Fees from Other Districts (In State)	1422									
49	Summer School Transportation Fees from Other Sources (In State)	1423									
50	Summer School Transportation Fees from Other Sources (Out of State)	1424									
51	CTE Transportation Fees from Pupils or Parents (In State)	1431									
52	CTE Transportation Fees from Other Districts (In State)	1432									
53	CTE Transportation Fees from Other Sources (In State)	1433									
54	CTE Transportation Fees from Other Sources (Out of State)	1434									
55	Special Education Transportation Fees from Pupils or Parents (In State)	1441									
56	Special Education Transportation Fees from Other Districts (In State)	1442									

	A	B	C	D	E	F	G	H	I	J	K
1			(10)	(20)	(30)	(40)	(50)	(60)	(70)	(80)	(90)
2	Description: Enter Whole Numbers Only	Acct #	Educational	Operations & Maintenance	Debt Service	Transportation	Municipal Retirement/ Social Security	Capital Projects	Working Cash	Tort	Fire Prevention & Safety
57	Special Education Transportation Fees from Other Sources (In State)	1443									
58	Special Education Transportation Fees from Other Sources (Out of State)	1444									
59	Adult Transportation Fees from Pupils or Parents (In State)	1451									
60	Adult Transportation Fees from Other Districts (In State)	1452									
61	Adult Transportation Fees from Other Sources (In State)	1453									
62	Adult Transportation Fees from Other Sources (Out of State)	1454									
63	Total Transportation Fees					0					
64	EARNINGS ON INVESTMENTS	1500									
65	Interest on Investments	1510	65,000								
66	Gain or Loss on Sale of Investments	1520									
67	Total Earnings on Investments		65,000	0	0	0	0	0	0	0	0
68	FOOD SERVICE	1600									
69	Sales to Pupils - Lunch	1611									
70	Sales to Pupils - Breakfast	1612									
71	Sales to Pupils - A la Carte	1613									
72	Sales to Pupils - Other (Describe & Itemize)	1614									
73	Sales to Adults	1620									
74	Other Food Service (Describe & Itemize)	1690									
75	Total Food Service		0								
76	DISTRICT/SCHOOL ACTIVITY INCOME	1700									
77	Admissions - Athletic	1711									
78	Admissions - Other	1719									
79	Fees	1720									
80	Book Store Sales	1730									
81	Other District/School Activity Revenue (Describe & Itemize)	1790									
82	Student Activity Fund Revenues	1799									
83	Total District/School Activity Income (without Student Activity Funds 1799)		0	0							
84	Total District/School Activity Income (with Student Activity Funds 1799)		0								
85	TEXTBOOK INCOME	1800									
86	Textbook Rentals - Regular Textbooks	1811									
87	Textbook Rentals - Summer School Textbooks	1812									
88	Textbook Rentals - Adult/Continuing Education Textbooks	1813									
89	Textbook Rentals - Other (Describe & Itemize)	1819									
90	Textbook Sales - Regular Textbooks	1821									
91	Textbook Sales - Summer School	1822									
92	Textbook Sales - Adult/Continuing Education	1823									
93	Textbook Sales - Other (Describe & Itemize)	1829									
94	Other Textbook Income (Describe & Itemize)	1890									
95	Total Textbooks		0								
96	OTHER REVENUE FROM LOCAL SOURCES	1900									
97	Rentals	1910									
98	Contributions and Donations from Private Sources	1920									
99	Impact Fees from Municipal or County Governments	1930									
100	Services Provided Other Districts	1940	14,328,227								
101	Refund of Prior Years' Expenditures	1950									
102	Payments of Surplus Moneys from TIF Districts	1960									
103	Drivers' Education Fees	1970									
104	Proceeds from Vendors' Contracts	1980									
105	School Facility Occupation Tax Proceeds	1983									
106	Payment from Other Districts	1991		192,000							
107	Sale of Vocational Projects	1992									
108	Other Local Fees (Describe & Itemize)	1993									
109	Other Local Revenues (Describe & Itemize)	1999									
110	Total Other Revenue from Local Sources		14,328,227	192,000	0	0	0	0	0	0	0

	A	B	C	D	E	F	G	H	I	J	K
1	Description: Enter Whole Numbers Only	Acct #	(10)	(20)	(30)	(40)	(50)	(60)	(70)	(80)	(90)
2			Educational	Operations & Maintenance	Debt Service	Transportation	Municipal Retirement/ Social Security	Capital Projects	Working Cash	Tort	Fire Prevention & Safety
111	Total Receipts/Revenues from Local Sources (without Student Activity Funds 1799)	1000	31,528,294	192,000	0	0	0	0	0	0	0
112	Total Receipts/Revenues from Local Sources (with Student Activity Funds 1799)		31,528,294								
113	FLOW-THROUGH RECEIPTS/REVENUES FROM ONE DISTRICT TO ANOTHER DISTRICT (2000)										
114	Flow-Through Revenue from State Sources	2100									
115	Flow-Through Revenue from Federal Sources	2200	869,228								
116	Other Flow-Through Revenue (Describe & Itemize)	2300									
117	Total Flow-Through Receipts/Revenues From One District to Another District	2000	869,228	0		0	0				
118	RECEIPTS/REVENUES FROM STATE SOURCES (3000)										
119	UNRESTRICTED GRANTS-IN-AID (3001-3099)										
120	Evidence Based Funding Formula (Section 18-8.15)	3001	2,799,607								
121	Reorganization Incentives (Accounts 3005-3021)	3005									
122	Fast Growth District Grants	3030									
123	Other Unrestricted Grants-In-Aid From State Sources (Describe & Itemize)	3099	500,000	50,000							
124	Total Unrestricted Grants-In-Aid		3,299,607	50,000	0	0	0	0		0	0
125	RESTRICTED GRANTS-IN-AID (3100-3900)										
126	SPECIAL EDUCATION										
127	Special Education - Private Facility Tuition	3100									
128	Special Education - Funding for Children Requiring Sp Ed Services	3105									
129	Special Education - Personnel	3110									
130	Special Education - Orphanage - Individual	3120									
131	Special Education - Orphanage - Summer Individual	3130									
132	Special Education - Summer School	3145									
133	Special Education - Other (Describe & Itemize)	3199									
134	Total Special Education		0	0		0					
135	CAREER AND TECHNICAL EDUCATION (CTE)										
136	CTE - Technical Education - Tech Prep	3200									
137	CTE - Secondary Program Improvement (CTEI)	3220									
138	CTE - WECEP	3225									
139	CTE - Agriculture Education	3235									
140	CTE - Instructor Practicum	3240									
141	CTE - Student Organizations	3270									
142	CTE - Other (Describe & Itemize)	3299									
143	Total Career and Technical Education		0	0			0				
144	BILINGUAL EDUCATION										
145	Bilingual Education - Downstate - TPI and TBE	3305									
146	Bilingual Education - Downstate - Transitional Bilingual Education	3310									
147	Total Bilingual Education		0				0				
148	State Free Lunch & Breakfast	3360	1,400								
149	School Breakfast Initiative	3365									
150	Driver Education	3370									
151	Adult Education (from ICCB)	3410									
152	Adult Education - Other (Describe & Itemize)	3499									
153	TRANSPORTATION										
154	Transportation - Regular and Vocational	3500									
155	Transportation - Special Education	3510	375,000								
156	Transportation - Other (Describe & Itemize)	3599									
157	Total Transportation		375,000	0		0	0				
158	Learning Improvement - Change Grants	3610									
159	Scientific Literacy	3660									
160	Truant Alternative/Optional Education	3695									

	A	B	C	D	E	F	G	H	I	J	K
1			(10)	(20)	(30)	(40)	(50)	(60)	(70)	(80)	(90)
2	Description: Enter Whole Numbers Only	Acct #	Educational	Operations & Maintenance	Debt Service	Transportation	Municipal Retirement/ Social Security	Capital Projects	Working Cash	Tort	Fire Prevention & Safety
161	Early Childhood - Block Grant	3705									
162	Chicago General Education Block Grant	3766									
163	Chicago Educational Services Block Grant	3767									
164	School Safety & Educational Improvement Block Grant	3775									
165	Technology - Technology for Success	3780									
166	State Charter Schools	3815									
167	Extended Learning Opportunities - Summer Bridges	3825									
168	Infrastructure Improvements - Planning/Construction	3920									
169	School Infrastructure - Maintenance Projects	3925									
170	Other Restricted Revenue from State Sources (Describe & Itemize)	3999									
171	Total Restricted Grants-In-Aid		376,400	0	0	0	0	0	0	0	0
172	Total Receipts/Revenues from State Sources	3000	3,676,007	50,000	0	0	0	0	0	0	0
173	RECEIPTS/REVENUES FROM FEDERAL SOURCES (4000)										
174	UNRESTRICTED GRANTS-IN-AID RECEIVED DIRECTLY FROM FEDERAL GOVT. (4001-4009)										
175	Federal Impact Aid	4001									
176	Other Unrestricted Grants-In-Aid Received from Fed. Govt. (Describe & Itemize)	4009									
177	Total Unrestricted Grants-In-Aid Received Directly from Fed Govt		0	0	0	0	0	0	0	0	0
178	RESTRICTED GRANTS-IN-AID RECEIVED DIRECTLY FROM FEDERAL GOVT (4045-4090)										
179	Head Start	4045									
180	Construction (Impact Aid)	4050									
181	MAGNET	4060									
182	Other Restricted Grants-In-Aid Received from Fed. Govt. (Describe & Itemize)	4090									
183	Total Restricted Grants-In-Aid Received Directly from Federal Govt.		0	0		0	0	0			0
184	RESTRICTED GRANTS-IN-AID RECEIVED FROM FEDERAL GOVT. THRU THE STATE (4100-4999)										
185	TITLE V										
186	Title V - Flexibility and Accountability	4100									
187	Title V - SEA Projects	4105									
188	Title V - Rural Education Initiative (REI)	4107									
189	Title V - Other (Describe & Itemize)	4199									
190	Total Title V		0	0		0	0				
191	FOOD SERVICE										
192	Breakfast Start-Up Expansion	4200									
193	National School Lunch Program	4210	118,756								
194	Special Milk Program	4215									
195	School Breakfast Program	4220	40,569								
196	Summer Food Service Admin/Program	4225									
197	Child and Adult Care Food Program	4226									
198	Fresh Fruit and Vegetables	4240									
199	Food Service - Other (Describe & Itemize)	4299									
200	Total Food Service		159,325				0				
201	TITLE I										
202	Title I - Low Income	4300									
203	Title I - Low Income - Neglected, Private	4305									
204	Title I - Migrant Education	4340									
205	Title I - Other (Describe & Itemize)	4399									
206	Total Title I		0	0		0	0				
207	TITLE IV										
208	Title IV - Student Support & Academic Enrichment Grant	4400									
209	Title IV - Part A - Student Support & Academic Enrichment Grants Safe and Drug Free Schools	4415									

	A	B	C	D	E	F	G	H	I	J	K
1			(10)	(20)	(30)	(40)	(50)	(60)	(70)	(80)	(90)
2	Description: Enter Whole Numbers Only	Acct #	Educational	Operations & Maintenance	Debt Service	Transportation	Municipal Retirement/ Social Security	Capital Projects	Working Cash	Tort	Fire Prevention & Safety
210	Title IV - 21st Century	4421									
211	Title IV - Other (Describe & Itemize)	4499									
212	Total Title IV		0	0		0	0				
213	FEDERAL - SPECIAL EDUCATION										
214	Federal Special Education - Preschool Flow-Through	4600									
215	Federal Special Education - Preschool Discretionary	4605	809,000								
216	Federal Special Education - IDEA Flow Through	4620									
217	Federal Special Education - IDEA Room & Board	4625									
218	Federal Special Education - IDEA Discretionary	4630									
219	Federal Special Education - IDEA - Other (Describe & Itemize)	4699									
220	Total Federal Special Education		809,000	0		0	0				
221	CTE - PERKINS										
222	CTE - Perkins-Title III E Tech Prep	4770									
223	CTE - Other (Describe & Itemize)	4799									
224	Total CTE - Perkins		0	0			0				
225	Federal - Adult Education	4810									
226	ARRA - General State Aid - Education Stabilization	4850									
227	ARRA - Title I - Low Income	4851									
228	ARRA - Title I - Neglected, Private	4852									
229	ARRA - Title I - Delinquent, Private	4853									
230	ARRA - Title I - School Improvement (Part A)	4854									
231	ARRA - Title I - School Improvement (Section 1003g)	4855									
232	ARRA - IDEA - Part B - Preschool	4856									
233	ARRA - IDEA - Part B - Flow-Through	4857									
234	ARRA - Title IID - Technology - Formula	4860									
235	ARRA - Title IID - Technology - Competitive	4861									
236	ARRA - McKinney - Vento Homeless Education	4862									
237	ARRA - Child Nutrition Equipment Assistance	4863									
238	Impact Aid Formula Grants	4864									
239	Impact Aid Competitive Grants	4865									
240	Qualified Zone Academy Bond Tax Credits	4866									
241	Qualified School Construction Bond Credits	4867									
242	Build America Bond Tax Credits	4868									
243	Build America Bond Interest Reimbursement	4869									
244	ARRA - General State Aid - Other Government Services Stabilization	4870									
245	Other ARRA Funds - II	4871									
246	Other ARRA Funds - III	4872									
247	Other ARRA Funds - IV	4873									
248	Other ARRA Funds - V	4874									
249	ARRA - Early Childhood	4875									
250	Other ARRA Funds - VII	4876									
251	Other ARRA Funds - VIII	4877									
252	Other ARRA Funds - IX	4878									
253	Other ARRA Funds - X	4879									
254	Other ARRA Funds - Ed Job Fund Program	4880									
255	Total Stimulus Programs		0	0	0	0	0	0		0	0
256	Race to the Top Program	4901									
257	Race to the Top - Preschool Expansion Grant	4902									
258	Title III - Instruction for English Learners & Immigrant Students	4905									
259	Title III - English Language Acquisition	4909									
260	McKinney Education for Homeless Children	4920									
261	Title II - Eisenhower - Professional Development Formula	4930									
262	Title II - Teacher Quality	4932									
263	Title II - Part A - Supporting Effective Instruction - State Grants	4935									
264	Federal Charter Schools	4960									
265	State Assessment Grants	4981									

	A	B	C	D	E	F	G	H	I	J	K
1			(10)	(20)	(30)	(40)	(50)	(60)	(70)	(80)	(90)
2	Description: Enter Whole Numbers Only	Acct #	Educational	Operations & Maintenance	Debt Service	Transportation	Municipal Retirement/ Social Security	Capital Projects	Working Cash	Tort	Fire Prevention & Safety
266	Grant for State Assessments and Related Activities	4982									
267	Medicaid Matching Funds - Administrative Outreach	4991	300,000								
268	Medicaid Matching Funds - Fee-For-Service Program	4992									
269	Other Restricted Grants Received from Fed. Govt. thru State <i>(Describe & Itemize)</i>	4998	664,212								
270	Total Restricted Grants-In-Aid Received from Federal Govt. Thru the State		1,932,537	0	0	0	0	0		0	0
271	TOTAL RECEIPTS/REVENUES FROM FEDERAL SOURCES	4000	1,932,537	0	0	0	0	0	0	0	0
272	TOTAL DIRECT RECEIPTS/REVENUES (without Student Activity Funds 1799)		38,006,066	242,000	0	0	0	0	0	0	0
273	TOTAL DIRECT RECEIPTS/REVENUES (with Student Activity Funds 1799)		38,006,066								

1	A	B	C	D	E	F	G	H	I	J	K
2	Description: Enter Whole Numbers Only	Funct #	(100) Salaries	(200) Employee Benefits	(300) Purchased Services	(400) Supplies & Materials	(500) Capital Outlay	(600) Other Objects	(700) Non-Capitalized Equipment	(800) Termination Benefits	(900) Total
3	10 - EDUCATIONAL FUND (ED)										
4	INSTRUCTION (ED)	1000									
5	Regular Programs	1100									0
6	Tuition Payment to Charter Schools	1115									0
7	Pre-K Programs	1125									0
8	Special Education Programs (Functions 1200 - 1220)	1200	12,610,574	3,575,900	4,457,994	397,034	15,570		42,128		21,099,200
9	Special Education Programs Pre-K	1225									0
10	Remedial and Supplemental Programs K-12	1250									0
11	Remedial and Supplemental Programs Pre-K	1275									0
12	Adult/Continuing Education Programs	1300									0
13	CTE Programs	1400	83,211	23,522	167,083	32,837					306,653
14	Interscholastic Programs	1500									0
15	Summer School Programs	1600	283,327	46,887	47,170	20,183			8,122		405,689
16	Gifted Programs	1650									0
17	Driver's Education Programs	1700									0
18	Bilingual Programs	1800									0
19	Truant Alternative & Optional Programs	1900									0
20	Pre-K Programs - Private Tuition	1910									0
21	Regular K-12 Programs Private Tuition	1911									0
22	Special Education Programs K-12 Private Tuition	1912									0
23	Special Education Programs Pre-K Tuition	1913									0
24	Remedial/Supplemental Programs K-12 Private Tuition	1914									0
25	Remedial/Supplemental Programs Pre-K Private Tuition	1915									0
26	Adult/Continuing Education Programs Private Tuition	1916									0
27	CTE Programs Private Tuition	1917									0
28	Interscholastic Programs Private Tuition	1918									0
29	Summer School Programs Private Tuition	1919									0
30	Gifted Programs Private Tuition	1920									0
31	Bilingual Programs Private Tuition	1921									0
32	Truants Alternative/Opt Ed Programs Private Tuition	1922									0
33	Student Activity Fund Expenditures	1999									0
34	Total Instruction¹⁴ (Without Student Activity Funds 1999)	1000	12,977,112	3,646,309	4,672,247	450,054	15,570	0	50,250	0	21,811,542
35	Total Instruction¹⁴ (With Student Activity Funds 1999)	1000	12,977,112	3,646,309	4,672,247	450,054	15,570	0	50,250	0	21,811,542
36	SUPPORT SERVICES (ED)	2000									
37	Support Services - Pupil	2100									
38	Attendance & Social Work Services	2110									0
39	Guidance Services	2120									0
40	Health Services	2130	4,822,780	1,363,242	926,310	26,500	20,000		5,000		7,163,832
41	Psychological Services	2140									0
42	Speech Pathology & Audiology Services	2150	161,682	45,701	22,702	7,801	23,848		10,000		271,734
43	Other Support Services - Pupils (Describe & Itemize)	2190									0
44	Total Support Services - Pupil	2100	4,984,462	1,408,943	949,012	34,301	43,848	0	15,000	0	7,435,566
45	Support Services - Instructional Staff	2200									
46	Improvement of Instruction Services	2210	1,712,786	379,480	910,568	197,963			5,400		3,206,197
47	Educational Media Services	2220									0
48	Assessment & Testing	2230									0
49	Total Support Services - Instructional Staff	2200	1,712,786	379,480	910,568	197,963	0	0	5,400	0	3,206,197
50	Support Services - General Administration	2300									
51	Board of Education Services	2310			10,710						10,710
52	Executive Administration Services	2320	514,225	145,088	155,818	35,542	11,000				861,673
53	Special Area Administration Services	2330	107,925	15,156		700					123,781
54	Tort Immunity Services	2361, 2365									0
55	Total Support Services - General Administration	2300	622,150	160,244	166,528	36,242	11,000	0	0	0	996,164
56	Support Services - School Administration	2400									
57	Office of the Principal Services	2410									0
58	Other Support Services - School Administration (Describe & Itemize)	2490									0
59	Total Support Services - School Administration	2400	0	0	0	0	0	0	0	0	0

1	A	B	C	D	E	F	G	H	I	J	K
2	Description: Enter Whole Numbers Only	Funct #	(100) Salaries	(200) Employee Benefits	(300) Purchased Services	(400) Supplies & Materials	(500) Capital Outlay	(600) Other Objects	(700) Non-Capitalized Equipment	(800) Termination Benefits	(900) Total
60	Support Services - Business	2500									
61	Direction of Business Support Services	2510	154,350	42,071	3,500	500					200,421
62	Fiscal Services	2520	148,942	57,269	190,925	5,790					402,926
63	Operation & Maintenance of Plant Services	2540	51,924	14,676	480,010	34,240	1,123,125		1,050		1,705,025
64	Pupil Transportation Services	2550	213,890	60,457	149,852	36,428	60,000				520,627
65	Food Services	2560	39,635	18,857	152,827	150			370		211,839
66	Internal Services	2570									0
67	Total Support Services - Business	2500	608,741	193,330	977,114	77,108	1,183,125	0	1,420	0	3,040,838
68	Support Services - Central	2600									
69	Direction of Central Support Services	2610									0
70	Planning, Research, Development & Evaluation Services	2620									0
71	Information Services	2630									0
72	Staff Services	2640	378,921	113,116	234,213	21,204	1,500				748,954
73	Data Processing Services	2660	204,132	49,610	794,787	75,199	7,049		68,800		1,199,577
74	Total Support Services - Central	2600	583,053	162,726	1,029,000	96,403	8,549	0	68,800	0	1,948,531
75	Other Support Services - Misc. (Describe & Itemize)	2900									0
76	Total Support Services	2000	8,511,192	2,304,723	4,032,222	442,017	1,246,522	0	90,620	0	16,627,296
77	COMMUNITY SERVICES (ED)	3000									0
78	PAYMENTS TO OTHER DIST & GOVT UNITS (ED)	4000									
79	Payments to Other Dist & Govt Units (In-State)	4100									
80	Payments for Regular Programs	4110									0
81	Payments for Special Education Programs	4120									0
82	Payments for Adult/Continuing Education Programs	4130									0
83	Payments for CTE Programs	4140									0
84	Payments for Community College Programs	4170									0
85	Other Payments to In-State Govt Units - Programs (Describe & Itemize)	4190									0
86	Total Payments to Other Dist & Govt Units (In-State)	4100			0			0			0
87	Payments for Regular Programs - Tuition	4210									0
88	Payments for Special Education Programs - Tuition	4220									0
89	Payments for Adult/Continuing Education Programs - Tuition	4230									0
90	Payments for CTE Programs - Tuition	4240									0
91	Payments for Community College Programs - Tuition	4270									0
92	Payments for Other Programs - Tuition	4280									0
93	Other Payments to In-State Govt Units - Tuition (Describe & Itemize)	4290									0
94	Total Payments to Other Dist & Govt Units - Tuition (In State)	4200						0			0
95	Payments for Regular Programs - Transfers	4310									0
96	Payments for Special Education Programs - Transfers	4320									0
97	Payments for Adult/Continuing Ed Programs - Transfers	4330									0
98	Payments for CTE Programs - Transfers	4340									0
99	Payments for Community College Program - Transfers	4370									0
100	Payments for Other Programs - Transfers	4380									0
101	Other Payments to In-State Govt Units - Transfers (Describe & Itemize)	4390									0
102	Total Payments to Other Dist & Govt Units-Transfers (In State)	4300			0			0			0
103	Payments to Other Dist & Govt Units (Out of State)	4400									0
104	Total Payments to Other Dist & Govt Units	4000			0			0			0
105	DEBT SERVICE (ED)	5000									
106	Debt Service - Interest on Short-Term Debt	5100									
107	Tax Anticipation Warrants	5110									0
108	Tax Anticipation Notes	5120									0
109	Corporate Personal Property Repl Tax Anticipated Notes	5130									0
110	State Aid Anticipation Certificates	5140									0
111	Other Interest on Short-Term Debt (Describe & Itemize)	5150									0
112	Total Debt Service - Interest on Short-Term Debt	5100						0			0
113	Debt Service - Interest on Long-Term Debt	5200									0
114	Total Debt Service	5000						0			0
115	PROVISION FOR CONTINGENCIES (ED)	6000									0
116	Total Direct Disbursements/Expenditures (without Student Activity Funds (1999))		21,488,304	5,951,032	8,704,469	892,071	1,262,092	0	140,870	0	38,438,838

	A	B	C	D	E	F	G	H	I	J	K
1	Description: Enter Whole Numbers Only	Funct #	(100) Salaries	(200) Employee Benefits	(300) Purchased Services	(400) Supplies & Materials	(500) Capital Outlay	(600) Other Objects	(700) Non-Capitalized Equipment	(800) Termination Benefits	(900) Total
117	Total Direct Disbursements/Expenditures (with Student Activity Funds (1999))		21,488,304	5,951,032	8,704,469	892,071	1,262,092	0	140,870	0	38,438,838
118	Excess (Deficiency) of Receipts/Revenues Over Disbursements/Expenditures (without Student Activity Funds 1999)										(432,772)
119	Excess (Deficiency) of Receipts/Revenues Over Disbursements/Expenditures (with Student Activity Funds 1999)										(432,772)
120											
121	20 - OPERATIONS AND MAINTENANCE FUND (O&M)										
122	SUPPORT SERVICES (O&M)	2000									
123	Support Services - Pupil	2100									
124	Other Support Services - Pupils (Describe & Itemize)	2190									0
125	Support Services - Business	2500									
126	Direction of Business Support Services	2510									0
127	Facilities Acquisition & Construction Services	2530					6,000				6,000
128	Operation & Maintenance of Plant Services	2540			51,200		683,229				734,429
129	Pupil Transportation Services	2550									0
130	Food Services	2560									0
131	Total Support Services - Business	2500	0	0	51,200	0	689,229	0	0	0	740,429
132	Other Support Services - Misc. (Describe & Itemize)	2900									0
133	Total Support Services	2000	0	0	51,200	0	689,229	0	0	0	740,429
134	COMMUNITY SERVICES (O&M)	3000									0
135	PAYMENTS TO OTHER DIST & GOVT UNITS (O&M)	4000									
136	Payments to Other Dist & Govt Units (In-State)	4100									
137	Payments for Regular Programs	4110									0
138	Payments for Special Education Programs	4120									0
139	Payments for CTE Program	4140									0
140	Other Payments to In-State Govt Units - Programs (Describe & Itemize)	4190									0
141	Total Payments to Other Dist & Govt Units (In-State)	4100			0			0			0
142	Payments to Other Dist & Govt Units (Out of State) ¹⁴	4400									0
143	Total Payments to Other Dist & Govt Unit	4000			0			0			0
144	DEBT SERVICE (O&M)	5000									
145	Debt Service - Interest on Short-Term Debt	5100									
146	Tax Anticipation Warrants	5110									0
147	Tax Anticipation Notes	5120									0
148	Corporate Personal Prop Repl Tax Anticipated Notes	5130									0
149	State Aid Anticipation Certificates	5140									0
150	Other Interest on Short-Term Debt (Describe & Itemize)	5150									0
151	Total Debt Service - Interest on Short-Term Debt	5100						0			0
152	Debt Service - Interest on Long-Term Debt	5200									0
153	Total Debt Service	5000						0			0
154	PROVISION FOR CONTINGENCIES (O&M)	6000									0
155	Total Direct Disbursements/Expenditures		0	0	51,200	0	689,229	0	0	0	740,429
156	Excess (Deficiency) of Receipts/Revenues Over Disbursements/Expenditures										(498,429)
157											
158	30 - DEBT SERVICE FUND (DS)										
159	PAYMENTS TO OTHER DIST & GOVT UNITS (DS)	4000									
160	Payments to Other Dist & Govt Units (In-State)	4100									
161	Payments for Regular Programs	4110									0
162	Payments for Special Education Programs	4120									0
163	Other Payments to In-State Govt Units - Programs (Describe & Itemize)	4190									0
164	Total Payments to Other Dist & Govt Units (In-State)	4000						0			0
165	DEBT SERVICE (DS)	5000									
166	Debt Service - Interest on Short-Term Debt	5100									
167	Tax Anticipation Warrants	5110									0
168	Tax Anticipation Notes	5120									0
169	Corporate Personal Prop Repl Tax Anticipation Notes	5130									0
170	State Aid Anticipation Certificates	5140									0

1	A	B	C	D	E	F	G	H	I	J	K
2	Description: Enter Whole Numbers Only	Funct #	(100) Salaries	(200) Employee Benefits	(300) Purchased Services	(400) Supplies & Materials	(500) Capital Outlay	(600) Other Objects	(700) Non-Capitalized Equipment	(800) Termination Benefits	(900) Total
171	Other Interest on Short-Term Debt <i>(Describe & Itemize)</i>	5150									0
172	Total Debt Service - Interest On Short-Term Debt	5100						0			0
173	Debt Service - Interest on Long-Term Debt	5200									0
174	Debt Service - Payments of Principal on Long-Term Debt ¹⁵ (Lease/Purchase Principal Retired) <i>(Describe & Itemize)</i>	5300									0
175	Debt Service - Other <i>(Describe & Itemize)</i>	5400									0
176	Total Debt Service	5000			0			0			0
177	PROVISION FOR CONTINGENCIES (DS)	6000									0
178	Total Direct Disbursements/Expenditures				0			0			0
179	Excess (Deficiency) of Receipts/Revenues Over Disbursements/Expenditures										0
180											
181	40 - TRANSPORTATION FUND (TR)										
182	SUPPORT SERVICES (TR)	2000									
183	Support Services - Pupils	2100									
184	Other Support Services - Pupils <i>(Describe & Itemize)</i>	2190									0
185	Support Services - Business										
186	Pupil Transportation Services	2550									0
187	Other Support Services - Business <i>(Describe & Itemize)</i>	2900									0
188	Total Support Services	2000	0	0	0	0	0	0	0	0	0
189	COMMUNITY SERVICES (TR)	3000									
190	PAYMENTS TO OTHER DIST & GOVT UNITS (TR)	4000									
191	Payments to Other Dist & Govt Units (In-State)	4100									
192	Payments for Regular Program	4110									0
193	Payments for Special Education Programs	4120									0
194	Payments for Adult/Continuing Education Programs	4130									0
195	Payments for CTE Programs	4140									0
196	Payments for Community College Programs	4170									0
197	Other Payments to In-State Govt Units - Programs <i>(Describe & Itemize)</i>	4190									0
198	Total Payments to Other Dist & Govt Units (In-State)	4100			0			0			0
199	Payments to Other Dist & Govt Units (Out-of-State) <i>(Describe & Itemize)</i>	4400									0
200	Total Payments to Other Dist & Govt Units	4000			0			0			0
201	DEBT SERVICE (TR)	5000									
202	Debt Service - Interest on Short-Term Debt	5100									
203	Tax Anticipation Warrants	5110									0
204	Tax Anticipation Notes	5120									0
205	Corporate Personal Prop Repl Tax Anticipation Notes	5130									0
206	State Aid Anticipation Certificates	5140									0
207	Other Interest on Short-Term Debt <i>(Describe & Itemize)</i>	5150									0
208	Total Debt Service - Interest On Short-Term Debt	5100						0			0
209	Debt Service - Interest on Long-Term Debt	5200									0
210	Debt Service - Payments of Principal on Long-Term Debt ¹⁵ (Lease/Purchase Principal Retired) <i>(Describe & Itemize)</i>	5300									0
211	Debt Service - Other <i>(Describe & Itemize)</i>	5400									0
212	Total Debt Service	5000						0			0
213	PROVISION FOR CONTINGENCIES (TR)	6000									0
214	Total Direct Disbursements/Expenditures		0	0	0	0	0	0	0	0	0
215	Excess (Deficiency) of Receipts/Revenues Over Disbursements/Expenditures										0
216											
217	50 - MUNICIPAL RETIREMENT/SOC SEC FUND (MR/SS)										
218	INSTRUCTION (MR/SS)	1000									
219	Regular Program	1100									0
220	Pre-K Programs	1125									0
221	Special Education Programs (Functions 1200-1220)	1200									0
222	Special Education Programs Pre-K	1225									0
223	Remedial and Supplemental Programs K-12	1250									0

1	A	B	C	D	E	F	G	H	I	J	K
2	Description: Enter Whole Numbers Only	Funct #	(100) Salaries	(200) Employee Benefits	(300) Purchased Services	(400) Supplies & Materials	(500) Capital Outlay	(600) Other Objects	(700) Non-Capitalized Equipment	(800) Termination Benefits	(900) Total
224	Remedial and Supplemental Programs Pre-K	1275									0
225	Adult/Continuing Education Programs	1300									0
226	CTE Programs	1400									0
227	Interscholastic Programs	1500									0
228	Summer School Programs	1600									0
229	Gifted Programs	1650									0
230	Driver's Education Programs	1700									0
231	Bilingual Programs	1800									0
232	Truant Alternative & Optional Programs	1900									0
233	Total Instruction	1000		0							0
234	SUPPORT SERVICES (MR/SS)	2000									
235	Support Services - Pupil	2100									
236	Attendance & Social Work Services	2110									0
237	Guidance Services	2120									0
238	Health Services	2130									0
239	Psychological Services	2140									0
240	Speech Pathology & Audiology Services	2150									0
241	Other Support Services - Pupils <i>(Describe & Itemize)</i>	2190									0
242	Total Support Services - Pupil	2100		0							0
243	Support Services - Instructional Staff	2200									
244	Improvement of Instruction Services	2210									0
245	Educational Media Services	2220									0
246	Assessment & Testing	2230									0
247	Total Support Services - Instructional Staff	2200		0							0
248	Support Services - General Administration	2300									
249	Board of Education Services	2310									0
250	Executive Administration Services	2320									0
251	Special Area Administrative Services	2330									0
252	Claims Paid from Self Insurance Fund	2361									0
253	Risk Management and Claims Services Payments	2365									0
254	Total Support Services - General Administration	2300		0							0
255	Support Services - School Administration	2400									
256	Office of the Principal Services	2410									0
257	Other Support Services - School Administration <i>(Describe & Itemize)</i>	2490									0
258	Total Support Services - School Administration	2400		0							0
259	Support Services - Business	2500									
260	Direction of Business Support Services	2510									0
261	Fiscal Services	2520									0
262	Facilities Acquisition & Construction Services	2530									0
263	Operation & Maintenance of Plant Service	2540									0
264	Pupil Transportation Services	2550									0
265	Food Services	2560									0
266	Internal Services	2570									0
267	Total Support Services - Business	2500		0							0
268	Support Services - Central	2600									
269	Direction of Central Support Services	2610									0
270	Planning, Research, Development & Evaluation Services	2620									0
271	Information Services	2630									0
272	Staff Services	2640									0
273	Data Processing Services	2660									0
274	Total Support Services - Central	2600		0							0
275	Other Support Services - Misc. (Describe & Itemize)	2900									0
276	Total Support Services	2000		0							0
277	COMMUNITY SERVICES (MR/SS)	3000									0
278	PAYMENTS TO OTHER DIST & GOVT UNITS (MR/SS)	4000									
279	Payments for Regular Programs	4110									0
280	Payments for Special Education Programs	4120									0
281	Payments for CTE Programs	4140									0

	A	B	C	D	E	F	G	H	I	J	K
1	Description: Enter Whole Numbers Only	Funct #	(100) Salaries	(200) Employee Benefits	(300) Purchased Services	(400) Supplies & Materials	(500) Capital Outlay	(600) Other Objects	(700) Non-Capitalized Equipment	(800) Termination Benefits	(900) Total
282	Total Payments to Other Dist & Govt Units	4000		0							0
283	DEBT SERVICE (MR/SS)	5000									
284	Debt Service - Interest on Short-Term Debt	5100									
285	Tax Anticipation Warrants	5110									0
286	Tax Anticipation Notes	5120									0
287	Corporate Personal Prop Repl Tax Anticipation Notes	5130									0
288	State Aid Anticipation Certificates	5140									0
289	Other Interest on Short-Term Debt (Describe & Itemize)	5150									0
290	Total Debt Service	5000						0			0
291	PROVISION FOR CONTINGENCIES (MR/SS)	6000									
292	Total Direct Disbursements/Expenditures			0				0			0
293	Excess (Deficiency) of Receipts/Revenues Over Disbursements/Expenditures										0
294											
295	60 - CAPITAL PROJECTS (CP)										
296	SUPPORT SERVICES (CP)	2000									
297	Support Services - Business										
298	Facilities Acquisition & Construction Services	2530									0
299	Other Support Services - Business (Describe & Itemize)	2900									0
300	Total Support Services	2000	0	0	0	0	0	0	0		0
301	PAYMENTS TO OTHER DIST & GOVT UNITS (CP)	4000									
302	Payments to Other Dist & Govt Units (In-State)	4100									
303	Payments to Regular Programs	4110									0
304	Payment for Special Education Programs	4120									0
305	Payment for CTE Programs	4140									0
306	Payments to Other Govt Units - Programs (In-State) (Describe & Itemize)	4190									0
307	Total Payments to Other Districts & Govt Units	4000			0			0			0
308	PROVISION FOR CONTINGENCIES (CP)	6000									
309	Total Direct Disbursements/Expenditures		0	0	0	0	0	0	0		0
310	Excess (Deficiency) of Receipts/Revenues Over Disbursements/Expenditures										0
311											
312	70 WORKING CASH FUND (WC)										
313											
314	80 - TORT FUND (TF)										
315	INSTRUCTION (TF)	1000									
316	Regular Programs	1100									0
317	Tuition Payment to Charter Schools	1115									0
318	Pre-K Programs	1125									0
319	Special Education Programs (Functions 1200 - 1220)	1200									0
320	Special Education Programs Pre-K	1225									0
321	Remedial and Supplemental Programs K-12	1250									0
322	Remedial and Supplemental Programs Pre-K	1275									0
323	Adult/Continuing Education Programs	1300									0
324	CTE Programs	1400									0
325	Interscholastic Programs	1500									0
326	Summer School Programs	1600									0
327	Gifted Programs	1650									0
328	Driver's Education Programs	1700									0
329	Bilingual Programs	1800									0
330	Truant Alternative & Optional Programs	1900									0
331	Pre-K Programs - Private Tuition	1910									0
332	Regular K-12 Programs Private Tuition	1911									0
333	Special Education Programs K-12 Private Tuition	1912									0
334	Special Education Programs Pre-K Tuition	1913									0
335	Remedial/Supplemental Programs K-12 Private Tuition	1914									0
336	Remedial/Supplemental Programs Pre-K Private Tuition	1915									0
337	Adult/Continuing Education Programs Private Tuition	1916									0
338	CTE Programs Private Tuition	1917									0

1	A	B	C	D	E	F	G	H	I	J	K
2	Description: Enter Whole Numbers Only	Funct #	(100) Salaries	(200) Employee Benefits	(300) Purchased Services	(400) Supplies & Materials	(500) Capital Outlay	(600) Other Objects	(700) Non-Capitalized Equipment	(800) Termination Benefits	(900) Total
339	Interscholastic Programs Private Tuition	1918									0
340	Summer School Programs Private Tuition	1919									0
341	Gifted Programs Private Tuition	1920									0
342	Bilingual Programs Private Tuition	1921									0
343	Truants Alternative/Opt Ed Programs Private Tuition	1922									0
344	Total Instruction¹⁴	1000	0	0	0	0	0	0	0	0	0
345	SUPPORT SERVICES (TF)	2000									
346	Support Services - Pupil	2100									
347	Attendance & Social Work Services	2110									0
348	Guidance Services	2120									0
349	Health Services	2130									0
350	Psychological Services	2140									0
351	Speech Pathology & Audiology Services	2150									0
352	Other Support Services - Pupils (Describe & Itemize)	2190									0
353	Total Support Services - Pupil	2100	0	0	0	0	0	0	0	0	0
354	Support Services - Instructional Staff	2200									
355	Improvement of Instruction Services	2210									0
356	Educational Media Services	2220									0
357	Assessment & Testing	2230									0
358	Total Support Services - Instructional Staff	2200	0	0	0	0	0	0	0	0	0
359	Support Services - General Administration	2300									
360	Board of Education Services	2310									0
361	Executive Administration Services	2320									0
362	Special Area Administration Services	2330									0
363	Claims Paid from Self Insurance Fund	2361									0
364	Risk Management and Claims Services Payments	2365									0
365	Total Support Services - General Administration	2300	0	0	0	0	0	0	0	0	0
366	Support Services - School Administration	2400									
367	Office of the Principal Services	2410									0
368	Other Support Services - School Administration (Describe & Itemize)	2490									0
369	Total Support Services - School Administration	2400	0	0	0	0	0	0	0	0	0
370	Support Services - Business	2500									
371	Direction of Business Support Services	2510									0
372	Fiscal Services	2520									0
373	Facilities Acquisition & Construction Services	2530									0
374	Operation & Maintenance of Plant Services	2540									0
375	Pupil Transportation Services	2550									0
376	Food Services	2560									0
377	Internal Services	2570									0
378	Total Support Services - Business	2500	0	0	0	0	0	0	0	0	0
379	Support Services - Central	2600									
380	Direction of Central Support Services	2610									0
381	Planning, Research, Development & Evaluation Services	2620									0
382	Information Services	2630									0
383	Staff Services	2640									0
384	Data Processing Services	2660									0
385	Total Support Services - Central	2600	0	0	0	0	0	0	0	0	0
386	Other Support Services - Misc. (Describe & Itemize)	2900									
387	Total Support Services	2000	0	0	0	0	0	0	0	0	0
388	COMMUNITY SERVICES (TF)	3000									
389	PAYMENTS TO OTHER DIST & GOVT UNITS (TF)	4000									
390	Payments to Other Dist & Govt Units (In-State)	4100									
391	Payments for Regular Programs	4110									0
392	Payments for Special Education Programs	4120									0
393	Payments for Adult/Continuing Education Programs	4130									0
394	Payments for CTE Programs	4140									0
395	Payments for Community College Programs	4170									0

1	A	B	C	D	E	F	G	H	I	J	K
2	Description: Enter Whole Numbers Only	Funct #	(100) Salaries	(200) Employee Benefits	(300) Purchased Services	(400) Supplies & Materials	(500) Capital Outlay	(600) Other Objects	(700) Non-Capitalized Equipment	(800) Termination Benefits	(900) Total
396	Other Payments to In-State Govt Units - Programs <i>(Describe & Itemize)</i>	4190									0
397	Total Payments to Other Dist & Govt Units (In-State)	4100			0			0			0
398	Payments for Regular Programs - Tuition	4210									0
399	Payments for Special Education Programs - Tuition	4220									0
400	Payments for Adult/Continuing Education Programs - Tuition	4230									0
401	Payments for CTE Programs - Tuition	4240									0
402	Payments for Community College Programs - Tuition	4270									0
403	Payments for Other Programs - Tuition	4280									0
404	Other Payments to In-State Govt Units - Tuition <i>(Describe & Itemize)</i>	4290									0
405	Total Payments to Other Dist & Govt Units - Tuition (In State)	4200						0			0
406	Payments for Regular Programs - Transfers	4310									0
407	Payments for Special Education Programs - Transfers	4320									0
408	Payments for Adult/Continuing Ed Programs - Transfers	4330									0
409	Payments for CTE Programs - Transfers	4340									0
410	Payments for Community College Program - Transfers	4370									0
411	Payments for Other Programs - Transfers	4380									0
412	Other Payments to In-State Govt Units - Transfers <i>(Describe & Itemize)</i>	4390									0
413	Total Payments to Other Dist & Govt Units-Transfers (In State)	4300			0			0			0
414	Payments to Other Dist & Govt Units (Out of State)	4400									0
415	Total Payments to Other Dist & Govt Units	4000			0			0			0
416	DEBT SERVICE (TF)	5000									
417	Debt Service - Interest on Short-Term Debt										
418	Tax Anticipation Warrants	5110									0
419	Tax Anticipation Notes	5120									0
420	Corporate Personal Property Replacement Tax Anticipation Notes	5130									0
421	State Aid Anticipation Certificates	5140									0
422	Other Interest or Short-Term Debt <i>(Describe & Itemize)</i>	5150									0
423	Debt Service - Interest on Long-Term Debt	5200									0
424	Debt Service - Payments of Principal on Long-Term Debt ¹⁵ (Lease/Purchase Principal Retired) <i>(Describe & Itemize)</i>	5300									0
425	Debt Service - Other <i>(Describe & Itemize)</i>	5400									0
426	Total Debt Service	5000			0			0			0
427	PROVISION FOR CONTINGENCIES (TF)	6000									0
428	Total Direct Disbursements/Expenditures		0	0	0	0	0	0	0	0	0
429	Excess (Deficiency) of Receipts/Revenues Over Disbursements/Expenditures										0
430											
431	90 - FIRE PREVENTION & SAFETY FUND (FP&S)										
432	SUPPORT SERVICES (FP&S)	2000									
433	Support Services - Business	2500									
434	Facilities Acquisition & Construction Services	2530									0
435	Operation & Maintenance of Plant Service	2540									0
436	Total Support Services - Business	2500	0	0	0	0	0	0	0		0
437	Other Support Services - Misc. <i>(Describe & Itemize)</i>	2900									0
438	Total Support Services	2000	0	0	0	0	0	0	0		0
439	PAYMENTS TO OTHER DISTRICTS & GOVT UNITS (FP&S)	4000									
440	Payments to Regular Programs	4110									0
441	Payments to Special Education Programs	4120									0
442	Other Payments to In-State Govt Units - Programs <i>(Describe & Itemize)</i>	4190									0
443	Total Payments to Other Districts & Govt Units (FPS)	4000						0			0
444	DEBT SERVICE (FP&S)	5000									
445	Debt Service - Interest on Short-Term Debt	5100									
446	Tax Anticipation Warrants	5110									0
447	Other Interest on Short-Term Debt <i>(Describe & Itemize)</i>	5150									0
448	Total Debt Service - Interest on Short-Term Debt	5100						0			0
449	Debt Service - Interest on Long-Term Debt	5200									0
450	Debt Service - Payments of Principal on Long-Term Debt ¹⁵ (Lease/Purchase Principal Retired) <i>(Describe & Itemize)</i>	5300									0

	A	B	C	D	E	F	G	H	I	J	K
1	Description: Enter Whole Numbers Only	Funct #	(100) Salaries	(200) Employee Benefits	(300) Purchased Services	(400) Supplies & Materials	(500) Capital Outlay	(600) Other Objects	(700) Non-Capitalized Equipment	(800) Termination Benefits	(900) Total
451	Total Debt Service	5000						0			0
452	PROVISIONS FOR CONTINGENCIES (FP&S)	6000									0
453	Total Direct Disbursements/Expenditures		0	0	0	0	0	0	0		0
454	Excess (Deficiency) of Receipts/Revenues Over Disbursements/Expenditures										0

	B	C	D	E	F	G	H
1	If there is an amount in column C or column G, please describe the type of revenue or expenditure in column D or column H.						
2	Revenue Check: OK						
3	Expenditure Check: OK						
4	Revenues Acct. (EstRev tab)	Amount	Describe Revenue		Expenditures Fund-Function (EstExp tab)	Amount	Describe Expenditures
5	1190				10-2190		
6	1290				10-2490		
7	1614				10-2900		
8	1690				10-4190		
9	1790				10-4290		
10	1819				10-4390		
11	1829				10-4400		
12	1890				10-5150		
13	1993				20-2190		
14	1999				20-2900		
15	2300				20-4190		
16	3099	\$ 550,000	School Maintenance Project Grant		20-4400		
17	3199				20-5150		
18	3299				30-4190		
19	3499				30-5150		
20	3599				30-5300		
21	3999				30-5400		
22	4009				40-2190		
23	4090				40-2900		
24	4199				40-4190		
25	4299				40-4400		
26	4399				40-5150		
27	4499				40-5300		
28	4699				40-5400		
29	4799				50-2190		
30	4998	\$ 664,212	ESSER III \$274,212, Division of Rehabilitation (DRS) \$390,000		50-2490		
31					50-2900		
32					50-5150		
33					60-2900		
34					60-4190		
35					80-2190		
36					80-2490		
37					80-2900		
38					80-4190		
39					80-4290		
40					80-4390		
41					80-4400		
42					80-5150		
43					80-5300		
44					80-5400		
45					90-2900		
46					90-4190		
47					90-5150		
48					90-5300		

DEFICIT BUDGET SUMMARY INFORMATION - Operating Funds Only (School Districts Only)					
Description	EDUCATIONAL FUND (10)	OPERATIONS & MAINTENANCE FUND (20)	TRANSPORTATION FUND (40)	WORKING CASH FUND (70)	TOTAL
Direct Revenues	38,006,066	242,000			38,248,066
Direct Expenditures	38,438,838	740,429			39,179,267
Difference	(432,772)	(498,429)			(931,201)
Estimated Fund Balance - June 30, 2024	5,510,563	33,436			5,543,999

Deficit Reduction Plan is not required

A deficit reduction plan is required if the local board of education adopts (or amends) the 2023-2024 school district budget in which the "operating funds" listed above result in direct revenues (line 9, BudgetSum 2-4) being less than direct expenditures (line 19, BudgetSum 2-4) by an amount equal to or greater than one-third (1/3) of the ending fund balance (line 81, BudgetSum 2-4).

Note: The balance is determined using only the four funds listed above. That is, if the estimated ending fund balance is less than three times the deficit spending, the district must adopt and file with ISBE a deficit reduction plan to balance the shortfall within three years.

Per School Code (105 ILCS 5/17-1) - If the Deficit AFR Summary Information tab from the 2022-2023 Annual Financial Report (AFR) reflects a deficit as defined above, then the school district shall adopt and submit a deficit reduction plan (found here on page 23-27) to ISBE within 30 days after acceptance of the AFR.

The deficit reduction plan, if required, is developed using ISBE guidelines and format.

	A	B	C	D	E	F	G
1	*School Districts Only		DEFICIT REDUCTION PLAN ESTIMATED BUDGET FY2023-2024				
2							
3	19022803060						
4	<i>District Number</i>						
5	School Assn For Special Educ						
6	<i>District Name</i>		Educational Fund	Operations & Maintenance Fund	Transportation Fund	Working Cash Fund	Total
7	ESTIMATED BEGINNING FUND BALANCE <i>(must equal prior Ending Fund Balance)</i>		5,943,335	531,865	0	0	6,475,200
8	RECEIPTS/REVENUES	Acct #					
9	LOCAL SOURCES	1000	31,528,294	192,000	0	0	31,720,294
10	FLOW-THROUGH RECEIPTS/REVENUES FROM ONE DISTRICT TO ANOTHER DISTRICT	2000	869,228	0	0		869,228
11	STATE SOURCES	3000	3,676,007	50,000	0	0	3,726,007
12	FEDERAL SOURCES	4000	1,932,537	0	0	0	1,932,537
13	Total Receipts/Revenues		38,006,066	242,000	0	0	38,248,066
14	DISBURSEMENTS/EXPENDITURES	Funct #					
15	INSTRUCTION	1000	21,811,542				21,811,542
16	SUPPORT SERVICES	2000	16,627,296	740,429	0		17,367,725
17	COMMUNITY SERVICES	3000	0	0	0		0
18	PAYMENTS TO OTHER DISTRICTS & GOVT. UNITS	4000	0	0	0		0
19	DEBT SERVICES	5000	0	0	0		0
20	PROVISION FOR CONTINGENCIES	6000	0	0	0		0
21	Total Disbursements/Expenditures		38,438,838	740,429	0		39,179,267
22	Excess of Receipts/Revenue Over/(Under) Disbursements/Expenditures		(432,772)	(498,429)	0	0	(931,201)
23	OTHER SOURCES/USES OF FUNDS						
24	OTHER SOURCES OF FUNDS (7000)		0	0	0	0	0
25	OTHER USES OF FUNDS (8000)		0	0	0	0	0
26	TOTAL OTHER SOURCES/USES OF FUNDS		0	0	0	0	0
27	ESTIMATED ENDING FUND BALANCE		5,510,563	33,436	0	0	5,543,999

	A	B	H	I	J	K	L
1	*School Districts Only		ESTIMATED BUDGET FY2024-2025				
2							
3	19022803060						
4	<i>District Number</i>						
5	School Assn For Special Educ						
6	<i>District Name</i>		Educational Fund	Operations & Maintenance Fund	Transportation Fund	Working Cash Fund	Total
7	ESTIMATED BEGINNING FUND BALANCE <i>(must equal prior Ending Fund Balance)</i>		5,510,563	33,436	0	0	5,543,999
8	RECEIPTS/REVENUES		Acct #				
9	LOCAL SOURCES		1000				
10	FLOW-THROUGH RECEIPTS/REVENUES FROM ONE DISTRICT TO ANOTHER DISTRICT		2000				
11	STATE SOURCES		3000				
12	FEDERAL SOURCES		4000				
13	Total Receipts/Revenues		0	0	0	0	0
14	DISBURSEMENTS/EXPENDITURES		Funct #				
15	INSTRUCTION		1000				
16	SUPPORT SERVICES		2000				
17	COMMUNITY SERVICES		3000				
18	PAYMENTS TO OTHER DISTRICTS & GOVT. UNITS		4000				
19	DEBT SERVICES		5000				
20	PROVISION FOR CONTINGENCIES		6000				
21	Total Disbursements/Expenditures		0	0	0	0	0
22	Excess of Receipts/Revenue Over/(Under) Disbursements/Expenditures		0	0	0	0	0
23	OTHER SOURCES/USES OF FUNDS						
24	OTHER SOURCES OF FUNDS (7000)						
25	OTHER USES OF FUNDS (8000)						
26	TOTAL OTHER SOURCES/USES OF FUNDS		0	0	0	0	0
27	ESTIMATED ENDING FUND BALANCE		5,510,563	33,436	0	0	5,543,999

	A	B	M	N	O	P	Q
1	*School Districts Only		ESTIMATED BUDGET FY2025-2026				
2							
3	19022803060						
4	<i>District Number</i>						
5	School Assn For Special Educ						
6	<i>District Name</i>		Educational Fund	Operations & Maintenance Fund	Transportation Fund	Working Cash Fund	Total
7	ESTIMATED BEGINNING FUND BALANCE <i>(must equal prior Ending Fund Balance)</i>		5,510,563	33,436	0	0	5,543,999
8	RECEIPTS/REVENUES		Acct #				
9	LOCAL SOURCES		1000				0
10	FLOW-THROUGH RECEIPTS/REVENUES FROM ONE DISTRICT TO ANOTHER DISTRICT		2000				0
11	STATE SOURCES		3000				0
12	FEDERAL SOURCES		4000				0
13	Total Receipts/Revenues		0	0	0	0	0
14	DISBURSEMENTS/EXPENDITURES		Funct #				
15	INSTRUCTION		1000				0
16	SUPPORT SERVICES		2000				0
17	COMMUNITY SERVICES		3000				0
18	PAYMENTS TO OTHER DISTRICTS & GOVT. UNITS		4000				0
19	DEBT SERVICES		5000				0
20	PROVISION FOR CONTINGENCIES		6000				0
21	Total Disbursements/Expenditures		0	0	0		0
22	Excess of Receipts/Revenue Over/(Under) Disbursements/Expenditures		0	0	0	0	0
23	OTHER SOURCES/USES OF FUNDS						
24	OTHER SOURCES OF FUNDS (7000)						0
25	OTHER USES OF FUNDS (8000)						0
26	TOTAL OTHER SOURCES/USES OF FUNDS		0	0	0	0	0
27	ESTIMATED ENDING FUND BALANCE		5,510,563	33,436	0	0	5,543,999

	A	B	R	S	T	U	V
1	*School Districts Only		ESTIMATED BUDGET FY2026-2027				
2							
3	19022803060						
4	<i>District Number</i>						
5	School Assn For Special Educ						
6	<i>District Name</i>		Educational Fund	Operations & Maintenance Fund	Transportation Fund	Working Cash Fund	Total
7	ESTIMATED BEGINNING FUND BALANCE <i>(must equal prior Ending Fund Balance)</i>		5,510,563	33,436	0	0	5,543,999
8	RECEIPTS/REVENUES		Acct #				
9	LOCAL SOURCES		1000				
10	FLOW-THROUGH RECEIPTS/REVENUES FROM ONE DISTRICT TO ANOTHER DISTRICT		2000				
11	STATE SOURCES		3000				
12	FEDERAL SOURCES		4000				
13	Total Receipts/Revenues		0	0	0	0	0
14	DISBURSEMENTS/EXPENDITURES		Funct #				
15	INSTRUCTION		1000				
16	SUPPORT SERVICES		2000				
17	COMMUNITY SERVICES		3000				
18	PAYMENTS TO OTHER DISTRICTS & GOVT. UNITS		4000				
19	DEBT SERVICES		5000				
20	PROVISION FOR CONTINGENCIES		6000				
21	Total Disbursements/Expenditures		0	0	0	0	0
22	Excess of Receipts/Revenue Over/(Under) Disbursements/Expenditures		0	0	0	0	0
23	OTHER SOURCES/USES OF FUNDS						
24	OTHER SOURCES OF FUNDS (7000)						
25	OTHER USES OF FUNDS (8000)						
26	TOTAL OTHER SOURCES/USES OF FUNDS		0	0	0	0	0
27	ESTIMATED ENDING FUND BALANCE		5,510,563	33,436	0	0	5,543,999

	A	B	W	X	Y	Z
1	*School Districts Only		SUMMARY BUDGET ADDENDUM - DEFICIT REDUCTION PLAN ESTIMATED BUDGET Date of Adoption: <input type="text"/> <i>(Enter as MM/DD/YY)</i>			
2						
3	19022803060					
4	District Number					
5	School Assn For Special Educ					
6	District Name		FY2023-2024	FY2024-2025	FY2025-2026	FY2026-2027
7	ESTIMATED BEGINNING FUND BALANCE <i>(must equal prior Ending Fund Balance)</i>		6,475,200	5,543,999	5,543,999	5,543,999
8	RECEIPTS/REVENUES		Acct #			
9	LOCAL SOURCES		1000	31,720,294	0	0
10	FLOW-THROUGH RECEIPTS/REVENUES FROM ONE DISTRICT TO ANOTHER DISTRICT		2000	869,228	0	0
11	STATE SOURCES		3000	3,726,007	0	0
12	FEDERAL SOURCES		4000	1,932,537	0	0
13	Total Receipts/Revenues			38,248,066	0	0
14	DISBURSEMENTS/EXPENDITURES		Funct #			
15	INSTRUCTION		1000	21,811,542	0	0
16	SUPPORT SERVICES		2000	17,367,725	0	0
17	COMMUNITY SERVICES		3000	0	0	0
18	PAYMENTS TO OTHER DISTRICTS & GOVT. UNITS		4000	0	0	0
19	DEBT SERVICES		5000	0	0	0
20	PROVISION FOR CONTINGENCIES		6000	0	0	0
21	Total Disbursements/Expenditures			39,179,267	0	0
22	Excess of Receipts/Revenue Over/(Under) Disbursements/Expenditures			(931,201)	0	0
23	OTHER SOURCES/USES OF FUNDS					
24	OTHER SOURCES OF FUNDS (7000)			0	0	0
25	OTHER USES OF FUNDS (8000)			0	0	0
26	TOTAL OTHER SOURCES/USES OF FUNDS			0	0	0
27	ESTIMATED ENDING FUND BALANCE			5,543,999	5,543,999	5,543,999

Deficit Reduction Plan-Background/Assumptions (School Districts Only)

**Fiscal Year 2023-2024
through Fiscal Year 2026-2027**

School Assn For Special Educ 19022803060

Please complete the following schedule and include a brief description to identify any areas of the budget that will be impacted from one year to the next. If the deficit reduction plan relies upon new local revenues, identify contingencies for further budget reductions which will be enacted in the event those new revenues are not available.

1. Background and Narrative of Budget Reductions:

2. Assumptions Used in the Deficit Reduction Plan:

- EBF and Estimated New Tier Funding:

- Equal Assessed Valuation and Tax Rates:

- Employee Salaries and Benefits:

Deficit Reduction Plan-Background/Assumptions (School Districts Only)

Fiscal Year 2023-2024

through Fiscal Year 2026-2027

- Short- and Long-Term Borrowing:

- Educational Impact:

- Other Assumptions:

- Has the district considered shared services or outsourcing (Ex: Transportation, Insurance)? If yes, please explain:

Evidence-Based Funding: Fiscal Year 2024 Spending Plan

N/A - EBF Spending Plan Not Required for Joint Agreements

Part I: Achieving Student Growth and Making Progress Toward State Education Goals

The questions below allow you to indicate the strategic priorities and strategies that will drive your efforts to achieve student growth and make progress toward state education goals. These may involve investing in any combination of an Organizational Unit's core resources: time, money, people, and programs.

Collaboration Opportunity - Organizational Units may find that Part I is most easily and effectively completed if led by program leaders in consultation with finance leaders.

1) What are the Organizational Unit's strategic goals for student success for the 2023-24 school year? What measures will be used to evaluate progress? (No more than 2000 characters, including spaces.)

	Top Strategy 1	Top Strategy 2	Top Strategy 3
2) Select the top three strategies that the Organizational Unit will employ to achieve student growth and make progress toward state education goals. (Select three different responses from the dropdown list.)			
If "Other" was selected in question 2, please describe. (No more than 1000 characters, including spaces.)			

Part II: Planned Use of Evidence-Based Funding

The questions below provide an opportunity to document the stakeholders with whom you consulted and the data you analyzed as you determined your strategic allocations of FY 2024 EBF dollars. Key statistics related to EBF distributions are provided for your reference. Form 50-36/50-39 is typically released before current-year appropriations are known. Therefore, the figures provided are for the prior fiscal year.

Collaboration Opportunity - Organizational Units may find that questions in this section are most easily and effectively completed if led by finance leaders in consultation with program leaders.

Evidence-Based Funding Organizational Unit Results (FY 2023)	Final Resources / Adequacy Target = Percent of Adequacy	Average Student Enrollment	#N/A	Adequacy Target	#N/A
		Final Resources	#N/A	Percent of Adequacy	#N/A
	Base Funding Minimum + Tier Funding = Gross State Contribution	Tier Assignment	#N/A	Gross State Contribution	#N/A
		FY23 Base Funding Minimum	#N/A	FY 2023 Tier Funding	#N/A
	Within FY 2023 Gross State Contribution, Resources Attributable to Specific Populations	Low-Income Students	#N/A		
		English Learners (ELs)	#N/A		
		Special Education	#N/A		

	FY 2024 Tier Funding	Funding Type (Select)	*Note: Tier Funding allocations are published annually at https://www.isbe.net/Pages/ebfdistribution.aspx . Amounts are available in early August. Districts are encouraged to use actual funding amounts if they are available before transmitting the budget to ISBE.
1) FY 2024 Tier Funding Allocation*: Enter the dollar amount of Tier Funding allocated to the Organizational Unit within the FY 2024 Gross State Contribution. Enter "0" if current-year appropriations did not include Tier Funding. Select whether the amount is estimated or actual funding.	[Enter \$]		

		Data Source 1	Data Source 2	Data Source 3
2)	Select the top three sources of data used to inform the Organizational Unit's planned allocation of EBF dollars. (Select three different responses.)			
3)	Indicate with which groups the Organizational Unit engaged to inform its intended allocation of EBF dollars. (Select any that apply; otherwise leave blank.)	Bilingual Program Director(s)	Principals	Bilingual Parent Advisory Committee
		Special Ed. Program Director(s)	School Improvement Teams	Other Parent Group(s)
		Other Program Leaders	Teacher or Support Staff Unions	Community Focus Group(s)
		School Board Members	Other School Staff	Other
[Optional] Provide a brief description of the Organizational Unit's process for consulting with internal and external stakeholders in determining the allocation of EBF dollars. (No more than 1000 characters, including spaces.)				
		Priority Investment 1	Priority Investment 2	Priority Investment 3
4)	Given the data analyzed, the stakeholders consulted, and the priorities identified in Part I, indicate the top three priority investments the Organizational Unit will make with its FY 2024 Base Funding Minimum (e.g., excluding Tier Funding). Choose "Other" if investments do not match the provided list. (Select three different responses. "Other" may be selected more than once if needed.)			
If "Other" was selected in question 4, please describe. (No more than 1000 characters, including spaces.)				

Cost Factor Table

The table below presents the regionally adjusted amount embedded in the Organizational Unit's FY 2023 Adequacy Target for each of the 34 cost factors in the Evidence-Based Funding model (Column F). Column G is required for all Organizational Units that receive at least \$5,000 in Tier Funding, while column H is optional. Organizational Units may choose to provide additional narrative context in Columns I-M to elaborate on the figures included in the table. ISBE has produced guidance for populating the cost factor table. The guidance includes a definition for each cost factor, along with suggestions for using Employee Information System position codes and common expenditure accounts to support a determination of expenditures. This guidance is available at <https://www.isbe.net/ebfspendingplan>.

Column G: If the Organizational Unit will receive at least \$5,000 in FY 2024 Tier Funding (as entered in Q2.1/cell G31), column G is required. Please indicate the Organizational Unit's planned expenditures in FY 2024 from Tier Funds only. Organizational Units are not expected to place a value in each cell. Rather, the table allows for the communication of priority investments with new state resources for the current fiscal year. During years in which there is no new Tier Funding, column G will not be required. During years in which Tier Funding is available, the amount of new Tier Funding entered in Q2.1/cell G31 above must equal the sum in cell G90 below. If some or all Tier Funding is invested outside of the cost factors, enter a dollar amount in cell G89 and provide additional context in the space for a narrative beginning in row 93.

Column H: Optionally, Organizational Units may populate column H with total planned expenditures in FY 2024 for each cost factor from all revenue sources (e.g., not just from EBF). By comparing the figures in column F to the figures entered in column H, the Organizational Unit may engage local stakeholders in productive dialogue about resource allocation decisions.

Cost Factors	Amount in FY 2023 Adjusted Adequacy Target	Budgeted FY 2024 Investments with New Tier Funding [Required]	Budgeted FY 2024 Expenditures (All Resources) [Optional]	Optional District Narratives
Core Investments	Core Teachers	#N/A		Enter optional context for core investment decisions.
	Specialist Teachers	#N/A		
	Instructional Facilitator	#N/A		
	Core Intervention Teacher	#N/A		
	Substitute Teachers	#N/A		
	Guidance Counselor	#N/A		
	Nurse	#N/A		
	Supervisory Aide	#N/A		
	Librarian	#N/A		
	Librarian Aide	#N/A		
	Principal	#N/A		
	Assistant Principal	#N/A		
	School Site Staff	#N/A		
Subtotal	#N/A			

Per Student Investments	Gifted	#N/A		Enter optional context for per student investment decisions.	
	Professional Development	#N/A			
	Instructional Materials	#N/A			
	Assessments	#N/A			
	Computer & Tech Equipment	#N/A			
	Student Activities	#N/A			
	Maintenance & Operations	#N/A			
	Central Office	#N/A			
	Employee Benefits	#N/A			
Subtotal*		#N/A			
Additional Investments	Low-Income Intervention Teacher	#N/A		Enter optional context for additional investment decisions.	
	Low-Income Pupil Support Staff	#N/A			
	Low-Income Extended Day Teacher	#N/A			
	Low-Income Summer School Teacher	#N/A			
	EL Intervention Teacher	#N/A			
	EL Pupil Support Staff	#N/A			
	EL Extended Day Teacher	#N/A			
	EL Summer School Teacher	#N/A			
	EL Core Teacher	#N/A			
	Sp Ed Teacher	#N/A			
	Sp Ed Instructional Assistant	#N/A			
	Sp Ed Psychologist	#N/A			
	Subtotal		#N/A		
Other Investments					
Total**		#N/A		Tier Funding Check (Cell G90)	
<p>*The subtotal for Per Student Investments is a calculated figure that adjusts salary portions of Central Office and Maintenance & Operations to account for regional salary differences. As a result, the sum of each individual cost factor will not equal the subtotal.</p> <p>**The total is the Final Adequacy Target (adjusted for Regionalization Factor) calculated in the Full FY 2023 EBF Calculation file. Due to differences in rounding, this figure may vary slightly from the sum of the subtotals in this table.</p>					
<p>If some or all Tier Funding was invested outside of the cost factors, please describe. (No more than 1000 characters, including spaces.)</p>					
Part III: Support for Special Student Groups					
<p>EBF statute sets aside specific allocations to be spent for special education, English learners, and low-income students. Per statute these designated funds must be spent on programs and services benefiting these specific student groups. Funds for English learners and low-income students must be spent in addition to, and not in lieu of, funding that supports general programs of instruction for all students. Funds attributable to special education must be used for the provision of special education facilities and services as outlined in ILCS 14-1.08. Current-year EBF amounts attributable to each of the special student groups must be reported in cells G100-G102 below. If the Organizational Unit received at least \$5,000 for any of the student groups, a response to the questions below is required. For amounts less than \$5,000, a response is optional. All other EBF funds may be spent in any manner deemed appropriate by the school district.</p> <p>Collaboration Opportunity - Organizational Units may find that questions in this section are most easily and effectively completed through collaboration between program leaders affiliated with each student group and finance leaders.</p>					
1)	FY 2024 Student Population Allocations*: Enter the dollar amount of resources attributable to Specific Populations within the FY24 Gross State Contribution. Enter "0" if no funds are allocated for a student group. Select whether amounts are estimated or actual.	Low-Income Students	Enter Amounts	Select type	*Note: Allocations for each of the three student groups are published annually at isbe.net/ebfdist under "Reports." Amounts are typically available by September 1. Districts are encouraged to use actual amounts if they are available before transmitting the budget to ISBE.
		English Learners	[Enter \$]		
		Special Education	[Enter \$]		

2)	Organizational Unit investment of EBF dollars for low-income students: Select the investments that apply. (Optionally, dollar amounts for each investment may be entered.) Response Required	Low-Income Intervention Teacher		Low-Income Extended Day Teacher		Other Investments	
		[Optional - Enter \$]		[Optional - Enter \$]		[Optional - Enter \$]	
		Low-Income Pupil Support Staff		Low-Income Summer School Teacher			
[Optional - Enter \$]		[Optional - Enter \$]					
Additional context for the Organizational Unit's planned use of dollars attributable to low-income students in FY 2024. (Required if "Other Investments" selected above. No more than 500 characters, including spaces.)							

3)	Organizational Unit investment of EBF dollars for English learners: Select the investments that apply. (Optionally, dollar amounts for each investment may be entered.) Response Required	English Learner Intervention Teacher		English Learner Extended Day Teacher		English Learner Core Teacher	
		[Optional - Enter \$]		[Optional - Enter \$]		[Optional - Enter \$]	
		English Learner Pupil Support Staff		English Learner Summer School Teacher		Other Investments	
[Optional - Enter \$]		[Optional - Enter \$]		[Optional - Enter \$]			
Additional context for the Organizational Unit's planned use of dollars attributable to English learners in FY 2024. (Required if "Other Investments" selected above. No more than 500 characters, including spaces.)							

4)	Organizational Units investment of EBF dollars for Special Education: Select the investments that apply. (Optionally, dollar amounts for each investment may be entered.) Response Required	Special Education Teacher		Special Education Psychologist			
		[Optional - Enter \$]		[Optional - Enter \$]			
		Special Education Instructional Assistant		Other Investments			
[Optional - Enter \$]		[Optional - Enter \$]					
Additional context for the Organizational Unit's planned use of dollars attributable to Special Education students in FY 2024. (Required if "Other Investments" selected above. No more than 500 characters, including spaces.)							

Plan Assurances

Please complete the assurances below related to Article 14C of the Illinois School Code, which stipulates allowable expenditures for English learners. Organizational Units should maintain supporting documentation (e.g., sign-in sheets, meeting agendas) to affirm the veracity of the below assurances. Note that a separate collection of the Bilingual Service Plan takes place before each school year and must be separately reviewed by the Bilingual Parent Advisory Committee (BPAC). Responses in this plan should be aligned with information contained in the Bilingual Service Plan. Responses in this section are only required if an Organizational Unit receives any amount of EBF dollars attributable to English learners.

Collaboration Opportunity - Organizational Units may find that the plan assurances are most easily and effectively completed if led by program leaders.

1). "I hereby affirm that at least 60% of the school district's state funds attributable to English learners will be used for instructional costs of programs and services for English learners (function 1000), in accordance with Article 14C of the Illinois School Code. The remaining balance of state funds attributable to English learners will also be used to serve English learners."

2). "My school district has at least one attendance center with 20 or more English learners (including parental refusals) who speak the same home language other than English in grades K-12. Alternatively and/or additionally, my school district has at least one attendance center with 20 or more English learners (including parent refusals) who speak the same home language other than English in pre-K."

3). "I hereby affirm that the school district's BPAC will review this EBF Spending Plan by or before October 31, 2023."

4). Enter the anticipated date on which the BPAC review will take place and the name of the BPAC chair for SY 2023-24.

BPAC Meeting (MM/DD/YYYY)	
Name of Chair	

Spending Plan Completion Tracker		
Use the information below to confirm completion of all required questions. Note that the "status" column adjusts to responses, so the tracker is most helpful to consult after you have completed the spending plan.		
Question	Status	Acceptance Criteria
Part 1, Q1	Incomplete	Character length of response must be >10 and <=2000, including spaces.
Part 1, Q2	Incomplete	A different response must be selected in G11, I11, and L11; cells cannot be blank.
Part 1, Q2 (Narrative)	Complete	Response required only if "Other" selected in G11, I11, or L11; character length of response must be >10 and <=1000, including spaces.
Part 2, Q1	Incomplete	A numeric value must be entered in cell G31 (estimated or actual Tier Funding, or 0 if appropriations did not include Tier Funding). A type must be selected in cell H31.
Part 2, Q2	Incomplete	A different response must be selected in G35, I35, and L35; cells cannot be blank.
Part 2, Q3	Incomplete	At least one response must be selected.
Part 2, Q4	Incomplete	Cells G43, I43, and L43 cannot be blank. "Other" may be selected more than once, but other responses may not be repeated.
Part 2, Q4 (Narrative)	Complete	Response required only if "Other" selected in G43, I43, or L43; character length of response must be >10 and <=1000, including spaces.
Part 2, Q5 (Cell G90)	Incomplete	Cell G90 must be equal to the value in cell G31.
Part 2, Q5 (Narrative)	Complete	Response required only if a value was entered in cell G89; character length of response must be >10 and <=1000, including spaces.
Part 3, Q1 Low-Income Funds	Incomplete	A numeric value must be entered, which may be "0" if the organizational unit received no funding for the specified student group. A type must be selected in cell H100.
Part 3, Q1 English Learner Funds	Incomplete	A numeric value must be entered, which may be "0" if the organizational unit received no funding for the specified student group. A type must be selected in cell H101.
Part 3, Q1 Spec. Ed. Funds	Incomplete	A numeric value must be entered, which may be "0" if the organizational unit received no funding for the specified student group. A type must be selected in cell H102.
Part 3, Q2	Incomplete	At least one response must be selected.
Part 3, Q2 (Narrative)	Complete	Response required only if "Other Investments" was selected in the previous question; character length of response must be >10 and <=500, including spaces.
Part 3, Q3	Incomplete	At least one response must be selected.
Part 3, Q3 (Narrative)	Complete	Response required only if "Other Investments" was selected in the previous question; character length of response must be >10 and <=500, including spaces.
Part 3, Q4	Incomplete	At least one response must be selected.
Part 3, Q4 (Narrative)	Complete	Response required only if "Other Investments" was selected in the previous question; character length of response must be >10 and <=500, including spaces.
Assurances 1	Complete	Response required if the value entered in cell G101>0.
Assurances 2	Complete	Response required if the value entered in cell G101>0.
Assurances 3	Complete	Response required if "Yes" selected in cell E133.
Assurances 4 (Meeting Date)	Complete	Response required if "Yes" selected in cell E133; enter date in MM/DD/YYYY format.
Assurances 4 (Name of Chair)	Complete	Response required if "Yes" selected in cell E133.

ESTIMATED LIMITATION OF ADMINISTRATIVE COSTS (School Districts Only)

(For Local Use Only)

This is an estimated Limitation of Administrative Costs Worksheet only and will not be accepted for Official Submission of the Limitation of Administrative Costs Worksheet.

The worksheet is intended for use during the budgeting process to estimate the district's percent increase of FY2024 budgeted expenditures over actual FY2023 expenditures. Budget information is copied to this page. Insert the prior year estimated actual expenditures to compute the estimated percentage increase (decrease).

The official Limitation of Administrative Costs Worksheet is attached to the end of the Annual Financial Report (ISBE Form 50-35) and may be submitted in conjunction with that report.

An official Limitation of Administrative Costs Worksheet can also be found on the ISBE website at: [Limitation of Administrative Costs](#)

ESTIMATED LIMITATION OF ADMINISTRATIVE COSTS WORKSHEET

(Section 17-1.5 of the School Code)

School District Name: **School Assn For Special Educ**

RCDT Number: **19022803060**

		Estimated Actual Expenditures, Fiscal Year 2023				Budgeted Expenditures, Fiscal Year 2024			
		(10)	(20)	(80)		(10)	(20)	(80)	
Description	Funct. No.	Educational Fund	Operations & Maintenance Fund	Tort Fund	Total	Educational Fund	Operations & Maintenance Fund	Tort Fund	Total
1. Executive Administration Services	2320				0	861,673		0	861,673
2. Special Area Administration Services	2330				0	123,781		0	123,781
3. Other Support Services - School Administration	2490				0	0		0	0
4. Direction of Business Support Services	2510				0	200,421	0	0	200,421
5. Internal Services	2570				0	0		0	0
6. Direction of Central Support Services	2610				0	0		0	0
7. Deduct - Early Retirement or other pension obligations required by state law and included above.					0				0
8. Totals		0	0	0	0	1,185,875	0	0	1,185,875
9. Estimated Percent Increase (Decrease) for FY2024 (Budgeted) over (Actual) FY 2023									Enter Actual Data

Reference Description

- 1 Each fund balance should correspond to the fund balance reflected on the books as of June 30th - Balance Sheet Accounts #720 and #730 (audit figures, if available).
- 2 Accounting and Financial Reporting for Certain Grants and Other Financial Assistance. The "On-Behalf" Payments should only be reflected on this page (Budget Summary, Lines 10 and 20).
- 3 Requires the secretary of the school board to notify the county clerk (within 30 days of the transfer approval) to abate an equal amount of taxes to be next extended. See Sec. 10-22.14 & 17-2.11.
- 3^a Requires notification to the county clerk to abate an equal amount from taxes next extended. See section 10-22.14
- 4 Principal on Bonds Sold:
 - (1) Funding Bonds are to be entered in the fund or funds in which the liability occurs.
 - (2) Refunding Bonds can be entered in the Debt Services Fund only.
 - (3) Building Bonds can be entered in the Capital Projects Fund only.
 - (4) Fire Prevention and Safety Bonds can be entered in the Fire Prevention & Safety Fund only.
- 5

The proceeds from the sale of school sites, buildings, or other real estate shall be used first to pay the principal and interest on any outstanding bonds on the property being sold, and after all such bonds have been retired, the remaining proceeds from the sale next shall be used by the school board to meet any urgent district needs as determined under Sections 2-3.12 and 17-2.11 of the School Code. Once these issues have been addressed, any remaining proceeds may be used for any other authorized purpose and for deposit into any district fund.
- 6 The School Code, Section 10-22.44 prohibits the transfer of interest earned on the investment of "any funds for purposes of Illinois Municipal Retirement under the Pension Code." This prohibition does not include funds for Social Security and Medicare-only purposes. For additional requirements on interest earnings, see 23 Illinois Administrative Code, Part 100, Section 100.50.
- 7 Cash plus investments must be greater than or equal to zero.
- 8

For cash basis budgets, this total will equal the Budget Summary - Total Direct Receipts/Revenues (Line 9) plus Total Other Sources of Funds (Line 46).
- 9

For cash basis budgets, this total will equal the Budget Summary - Total Direct Disbursements/Expenditures (Line 19) plus Total Other Uses of Funds (Line 79).
- 10

Working Cash Fund loans may be made to any district fund for which taxes are levied (Section 20-5 of the School Code).
- 11

Include revenue accounts 1110 through 1115, 1117,1118 & 1120.
- 12

The School Code Section 17-2.2c. Tax for leasing educational facilities or computer technology or both, and for temporary relocation expense purposes.
- 13

Corporate personal property replacement tax revenue must be first applied to the Municipal Retirement/Social Security Fund to replace tax revenue lost due to the abolition of the corporate personal property tax (30 ILCS 115/12). This provision does not apply to taxes levied for Medicare-Only purposes.
- 14

Only tuition payments made to private facilities. See Functions 4200 or 4400 for estimated public facility disbursements/expenditures.
- 15

Payment towards the retirement of lease/purchase agreements or bonded/other indebtedness (principal only) otherwise reported within the fund - e.g.: alternate revenue bonds. (Describe & Itemize)
- 16

Only abolishment of Working Cash Fund must transfer its funds directly to the Educational Fund upon adoption of a resolution and at the close of the current school Year (see 105 ILCS 5/20-8 for further explanation)

Only abatement of working cash fund can transfer its funds to any fund in most need of money (see 105 ILCS 5/20-10 for further explanation)

CHECK FOR ERRORS

This worksheet checks various cells to assure that selected items are in balance.

Please fix errors below before submitting to ISBE.

Budget Item References	Message
1. Deficit Reduction Plan (DefReductPlan 23-27 tab)	
Is Deficit Reduction Plan Required? (Joint Agreements do not complete Deficit Reduction Plan.)	Deficit Reduction Plan is not required
If required, is Deficit Reduction Plan completed? (DefReductPlan 23-27 tab)	
2. Cover Page (Cover tab)	
District Name must be selected from drop-down. (Cell H13)	OK
Accounting Basis must be selected on Cover sheet.	OK
Dates (Day, Month, Year) must be input on Cover sheet.	OK
Board Names must be typed on Cover sheet.	ERROR - TYPE BOARD NAMES
3. Budget Summary: Other Sources (BudgetSum 2-4 tab - Acct 7000) must equal Other Uses (BudgetSum 2-4 tab - Acct 8000).	
Estimated Beginning Fund Balance July, 1 2023 for all Funds (Cells C3 - K3) (Line must have a number or zero. Do not leave blank.)	OK
Estimated Activity Fund Beginning Fund Balance July, 1 2023 (Cell C83) (Cell must have a number or zero. Do not leave blank.)	OK
Transfer Among Funds (Funds 10, 20, 40 - Acct 7130 - Cells C29, D29, F29), must equal (Funds 10, 20 & 40 - Acct 8130 - Cells C52, D52, F52).	OK
Transfer of Interest (Funds 10 thru 90 - Acct 7140 - Cells C30:K30), must equal (Funds 10 thru 60, & 80 - Acct 8140 - Cells C53:H53, J53).	OK
Transfer to Debt Service to Pay Principal on GASB 87 Leases (Fund 30 - Acct 7400 - Cell E39) must equal (Funds 10, 20 & 60 - Acct 8400 Cells C57:H60).	OK
Transfer to Debt Service to Pay Interest on GASB 87 Leases (Fund 30 - Acct 7500 - Cell E40) must equal (Funds 10, 20 & 60 - Acct 8500 - Cells C61:H64).	OK
Transfer to Debt Service Fund to Pay Principal on Revenue Bonds (Fund 30 - Acct 7600 - Cell E41) must equal (Funds 10 & 20 - Acct 8600 - Cells C65:D68).	OK
Transfer to Debt Service to Pay Interest on Revenue Bonds (Fund 30 - Acct 7700 - Cell E42) must equal (Funds 10 & 20 - Acct 8700 - Cells C69:D72).	OK
Transfer to Capital Projects Fund (Fund 60 - Acct 7800 - Cell H43) must equal (Fund 10 & 20, Acct 8800 - Cells C73:D76).	OK
4. Summary of Cash Transactions: Beginning Cash Balance on Hand July 1, 2023 (CashSum 5 tab, All Funds) cannot be negative.	
Educational (Fund 10 - Cell C3)	OK
Operations & Maintenance (Fund 20 - Cell D3)	OK
Debt Service (Fund 30 - Cell E3)	OK
Transportation (Fund 40 - Cell F3)	OK
Municipal Retirement/Social Security (Fund 50 - Cell G3)	OK
Capital Projects (Fund 60 - Cell H3)	OK
Working Cash (Fund 70 - Cell I3)	OK
Tort (Fund 80 - Cell J3)	OK
Fire Prevention & Safety (Fund 90 - Cell K3)	OK
Activity Funds (Cell C23)	OK
5. Summary of Cash Transactions: Ending Cash Balance on Hand June 30, 2024 (CashSum 5 tab - All Funds) cannot be negative.	
Educational (Fund 10 - Cell C21)	OK
Operations & Maintenance (Fund 20 - Cell D21)	OK
Debt Service (Fund 30 - Cell E21)	OK
Transportation (Fund 40 - Cell F21)	OK
Municipal Retirement/Social Security (Fund 50 - Cell G21)	OK
Capital Projects (Fund 60 - Cell H21)	OK
Working Cash (Fund 70 - Cell I21)	OK
Tort (Fund 80 - Cell J21)	OK
Fire Prevention & Safety (Fund 90 - Cell K21)	OK
6. Summary of Cash Transactions: Other Receipts (CashSum 5 tab) must equal Other Disbursements (CashSum 5 tab).	
Interfund Loans Payable (Funds 10:60, 80, 90 - Acct 411 - Cells C6:H6, J6:K6) must equal Interfund Loans Receivable (Funds 10:20, 40, 70 - Acct 141 - Cells C15:D15, F15, I15).	OK
Interfund Loans Receivable (Funds 10, 20, 40, 70 - Acct 141 - Cells C7:D7, F7, I7) must equal Interfund Loans Payable (Funds 10:60, 80, 90 - Acct 411 - Cells C16:H16, J16, K16).	OK
7. Estimated Revenue (EstRev 6-11 tab)	
Amounts must be input for revenue.	OK
8. Estimated Expenditures (EstExp 12-20 tab)	
Amounts must be input for expenditures.	OK
9. Itemization Notes: Revenues/Expenditures reported that require note on Itemize 21 tab.	
Include brief note(s) describing revenue source.	OK
Include brief note(s) describing expenditure use.	OK
10. EBF Spending Plan	
All required questions have been answered.	OK

End of Balancing

Estimate of Revenue

CERTIFICATION OF BUDGET & APPROPRIATION ORDINANCE FOR
SCHOOL ASSOCIATION FOR SPECIAL EDUCATION IN DUPAGE COUNTY COOPERATIVE
DUPAGE COUNTY, ILLINOIS

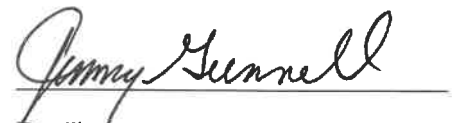
We, Jimmy Gunnell and Jim Nelson, do hereby certify as follows:

1. We are the Interim Executive Co-Directors for School Association for Special Education in DuPage County for the fiscal year 2023-2024.

2. Attached below is a true estimate of revenues anticipated to be received by School Association of Special Education Cooperative, DuPage County, Illinois, for the fiscal year beginning July 1, 2023 and ending June 30, 2024, for the funds indicated.

Fiscal Year 2023-2024 Estimate of Revenues by Fund

Education Fund	\$ 38,006,066.00
Operations and Maintenance Fund	\$ 242,000.00
Bond and Interest fund	
Transportation Fund	
Illinois Municipal Retirement/Social Security Fund	
Capital Project Funds	
Working Cash Fund	
Tort Immunity Fund	
Fire Prevention/Life Safety Fund	_____
 Total Direct Revenues	 \$ 38,248,066.00



Dr. Jimmy Gunnell
Executive Director, SASSED
August 9, 2023

Governing Board Secretary's Certification

State of Illinois

County of DuPage

GOVERNING BOARD SECRETARY'S CERTIFICATE

I, Tom Ruggio, the duly qualified Governing Board Secretary of the School Association for Special Education (SASED), DuPage County, Illinois, do hereby certify that the attached hereto are true and correct copies of the Resolution adopting the budget of said Cooperative for the 2023-24 fiscal year, and the Budget for said fiscal year, which Resolution and Budget were duly adopted by the Governing Board at a regular meeting held on the 9th day of August 2023.

I do further certify that quorum of said Governing Board was present at said meeting.

IN WITNESS THEREOF, I have hereunto set my hand this 9th day of August 2023.

Tom Ruggio

Secretary, Governing Board

School Association for Special
Education in DuPage County

Dated: August 9, 2023