

Minden Public Schools
Board of Education
Board of Education Regular Meeting
Minden High School Media Center
543 West 5th
Minden, NE 68959-0301
Monday, March 14, 2022 7:00 PM

1. Call to Order
 - 1.a. Open Meetings Act is Posted
 - 1.b. Mission Statement
 - 1.c. Roll Call
 - 1.d. Pledge of Allegiance
2. Public Comment
3. Consent Agenda
 - 3.a. Consider Minutes from February 14 & February 22 Meeting
 - 3.b. Consider Financial Reports
 - 3.c. Consider Expenditures and Claims for Payment
4. Reports
 - 4.a. Board Committees
 - 4.b. Principals
 - 4.c. Superintendent
5. Policy Review and Updates
6. Action Items
 - 6.a. Consider, Discuss, and Take Action on Amendments to Policy 5205 Graduation
 - 6.b. Consider, Discuss, and Take Action on Certified Staff Resignations
 - 6.c. Consider, Discuss, and Take Action on New Certified Staff Contracts
 - 6.d. Consider, Discuss, and Take Action on 2022-23 School Calendar
 - 6.e. Consider, Discuss, and Take Action on Concrete Bid
7. Next Meeting
8. Adjournment per Board President Action at 7:52 p.m.

**MINDEN PUBLIC SCHOOLS
BOARD OF EDUCATION
February 14, 2022**

The agenda for the February 14, 2022 meeting was posted at the United States Post Office in Minden, Minden Exchange Bank, First Bank and Trust Company, Kearney County Courthouse, and the Minden city office. Agendas were mailed to the United States Post Office in Upland and Heartwell. The agenda was posted in the superintendent's office and notice was published in the local paper.

The board meeting began at 7:00 pm with all board members present.

C.L.Jones Middle School student Rebecca Lempka read her VFW Patriot's Pen essay.

Motion by Krull and second by Craig to approve the consent agenda consisting of minutes from the January 10 and January 25 meetings, financial reports, and claims for payment. Roll call: Craig, aye; Glanzer, aye; Krull, aye; Raun, aye; Reed, aye; Rhynalds, aye. Motion carried.

The board reviewed the amendments to Policy 5205 Graduation.

Motion by Glanzer and second by Reed to approve with regret the resignations of Dawn Moyer, Robin Hollinger, and Nicole Miller at the end of the 2021-22 school year. Roll call: Craig, aye; Glanzer, aye; Krull, aye; Raun, aye; Reed, aye; Rhynalds, aye. Motion carried.

Motion by Craig and second by Raun to approve an average total package increase of 6.89% for classified staff for the 2022-23 school year with pay increases for class 1 classified staff effective February 1, 2022. Roll call: Craig, aye; Glanzer, aye; Krull, aye; Raun, aye; Reed, aye; Rhynalds, aye. Motion carried.

Motion by Glanzer and second by Craig to approve an average total package increase of 2.99% for administrators and professional staff salaries for the 2022-23 school year. Roll call: Craig, aye; Glanzer, aye; Krull, aye; Raun, aye; Reed, aye; Rhynalds, aye. Motion carried.

Motion by Raun and second by Krull to approve local substitute pay of \$135 per day, certified substitute pay of \$145 per day, retired teacher substitute pay of \$155 per day, and long term substitute pay of \$175 per day effective August 1, 2022. Roll call: Craig, abstain; Glanzer, aye; Krull, aye; Raun, aye; Reed, aye; Rhynalds, aye. Motion carried.

Motion by Glanzer and second by Reed to approve the Superintendent Contract to the 2024-2025 school year. Roll call: Craig, aye; Glanzer, aye; Krull, aye; Raun, aye; Reed, aye; Rhynalds, aye. Motion carried.

Motion by Craig and second by Glanzer to approve membership in Nebraska Association of School Boards. Roll call: Craig, aye; Glanzer, aye; Krull, aye; Raun, aye; Reed, aye; Rhynalds, aye. Motion carried.

Motion by Rhynalds and second by Craig to approve the band uniform purchase from Fruhauf Uniforms in conjunction with funding from the Minden Band Boosters and the Minden School Foundation. Roll call: Craig, aye; Glanzer, aye; Krull, aye; Raun, aye; Reed, aye; Rhynalds, aye. Motion carried.

At 7:43 pm, meeting adjourned per Board President action.

Secretary, Board of Education

**MINDEN PUBLIC SCHOOLS
BOARD OF EDUCATION
February 22, 2022**

The agenda for the February 22, 2022 board retreat was posted at the United States Post Office in Minden, Minden Exchange Bank, First Bank and Trust Company, Kearney County Courthouse, the Minden city office, and in the superintendent's office. Agendas were mailed to the United States Post Office in Upland and Heartwell. Notice was published in the local paper.

The board meeting began at 8:03 am with all board members present, except Krull. Motion by Glanzer and second by Craig to excuse the absence of Krull. Roll call: Craig, aye; Glanzer, aye; Krull, absent; Raun, aye; Reed, aye; Rhynalds, aye. Motion carried.

Krull entered the meeting at 8:11 am.

The board discussed enrollment, budget trends, and capital improvement plan. The board also toured the East Elementary building. No action was taken.

At 11:14 am, the meeting was adjourned per Board President action.

Secretary, Board of Education

MINDEN PUBLIC SCHOOLS
TREASURER'S REPORT
February 28, 2022

| | | | |
|--|----------------|--|----------------|
| SCHOOL BALANCE - January 31, 2021 | | | \$141,748.25 |
| Current Months Receipts | | | \$856,260.88 |
| Transfers from Investments | | | \$100,000.00 |
| Total Beginning Balance and Receipts | | | \$1,098,009.13 |
| Less: Disbursements | | | \$902,249.20 |
| Transfer to Investments | | | \$0.00 |
| Total Disbursements | | | \$902,249.20 |
| SCHOOL BALANCE - February 28, 2022 | | | \$195,759.93 |
| BALANCE PER BANK STATEMENT - February 28, 2022 | | | \$212,689.99 |
| Deposits In Transit | | | \$0.00 |
| LESS : Outstanding Checks | | | \$16,930.06 |
| RECONCILED BANK BALANCE - February 28, 2022 | | | \$195,759.93 |
| | | (Balance - February 28, 2021 = \$148,545.48) | |
| GENERAL FUND INVESTMENTS | | | \$2,426,350.65 |
| Money Market Minden Exchange | \$1,140,143.18 | 0.45% demand | |
| Money Market First Bank | \$1,286,207.47 | 0.12% demand | |
| | | (Balance February 28, 2021 = \$2,343,657.79) | |
| DEPRECIATION FUND INVESTED | | | \$64,206.91 |
| Money Market Minden Exchange Bank | \$17,233.58 | 0.45% demand | |
| Money Market First Bank | \$46,968.14 | 0.08% demand | |
| NE Liquid Asset Fund - Depreciation Fund | \$0.00 | 0.01% demand | |
| Checking Minden Exchange Bank | \$5.19 | | |
| | | (Balance February 28, 2021 = \$693,832.51) | |
| BUILDING FUND | | | \$794,098.17 |
| Money Market Minden Exchange Bank | \$620,888.95 | 0.45% demand | |
| Money Market First Bank | \$158,992.24 | 0.12% demand | |
| NE Liquid Asset Fund - Building Fund | \$14,212.48 | 0.01% demand | |
| Checking Minden Exchange Bank | \$4.50 | | |
| | | (Balance February 28, 2021 = \$769,652.17) | |
| BOND FUND | | | \$1,053,544.85 |
| Money Market Minden Exchange Bank | \$1,051,144.16 | 0.45% demand | |
| NE Liquid Asset Fund - Bond Fund | \$2,400.69 | 0.01% demand | |
| | | (Balance February 28, 2021 = \$1,009,857.33) | |
| LUNCH FUND | | | \$165,874.73 |
| Money Market First Bank | \$86,966.95 | 0.10% demand | |
| Checking First Bank | \$78,907.78 | | |
| | | (Balance February 28, 2021 = \$63,208.90) | |
| FUNDS PLEDGED FOR DEPOSITS | | | |
| Minden Exchange Bank | \$6,900,000.00 | Plus 250M FDIC | |
| First Bank | \$2,065,000.00 | Plus 250M FDIC | |

Scott W. Johnson, Treasurer

MINDEN PUBLIC SCHOOLS
TREASURER'S REPORT SUPPLEMENT
ACCOUNT RECONCILIATIONS
February 28, 2022

| Bank | Account # | Beginning Balance | Plus: Receipts | Plus/(Minus) Transfers | Minus: Expenditures | Ending/ Reconciled Balance | Previous Year Ending Balance |
|--------------------------|-----------------|-----------------------|-----------------------|------------------------|-----------------------|----------------------------|------------------------------|
| General Fund | | | | | | | |
| MEB | 401505 | \$141,748.25 | \$856,260.88 | \$100,000.00 | \$902,249.20 | \$195,759.93 | \$148,545.48 |
| MEB | 601096 | \$1,239,737.41 | \$405.77 | (\$100,000.00) | \$0.00 | \$1,140,143.18 | \$1,059,033.59 |
| FB&T | 801472 | \$1,286,089.08 | \$118.39 | \$0.00 | \$0.00 | \$1,286,207.47 | \$1,284,624.20 |
| | Subtotal | \$2,667,574.74 | \$856,785.04 | \$0.00 | \$902,249.20 | \$2,622,110.58 | \$2,492,203.27 |
| Depreciation Fund | | | | | | | |
| MEB | 401919 | \$5.19 | \$0.00 | \$0.00 | \$0.00 | \$5.19 | \$5.19 |
| MEB | 613109 | \$17,227.63 | \$5.95 | \$0.00 | \$0.00 | \$17,233.58 | \$305,287.62 |
| FB&T | 807982 | \$46,965.26 | \$2.88 | \$0.00 | \$0.00 | \$46,968.14 | \$118,844.14 |
| NLAF | 9300656 x | \$0.00 | | \$0.00 | \$0.00 | \$0.00 | \$269,695.56 |
| | Subtotal | \$64,198.08 | \$8.83 | \$0.00 | \$0.00 | \$64,206.91 | \$693,832.51 |
| Building Fund | | | | | | | |
| MEB | 106690 | \$4.50 | \$0.00 | \$0.00 | \$0.00 | \$4.50 | \$4.50 |
| MEB | 603209 | \$590,843.03 | \$30,045.92 | \$0.00 | \$0.00 | \$620,888.95 | \$396,713.89 |
| FB&T | 801407 | \$158,977.61 | \$14.63 | \$0.00 | \$0.00 | \$158,992.24 | \$358,723.12 |
| NLAF | 9300655 | \$14,212.34 | \$0.14 | \$0.00 | \$0.00 | \$14,212.48 | \$14,210.66 |
| | Subtotal | \$764,037.48 | \$30,060.69 | \$0.00 | \$0.00 | \$794,098.17 | \$769,652.17 |
| Bond Fund | | | | | | | |
| MEB | 620112 | \$943,078.80 | \$3,588,198.24 | \$0.00 | \$3,480,132.88 | \$1,051,144.16 | \$1,007,456.92 |
| NLAF | 9300692 | \$2,400.67 | \$0.02 | \$0.00 | \$0.00 | \$2,400.69 | \$2,400.41 |
| | Subtotal | \$945,479.47 | \$3,588,198.26 | \$0.00 | \$3,480,132.88 | \$1,053,544.85 | \$1,009,857.33 |
| Lunch Fund | | | | | | | |
| FB&T | 990119 | \$151,706.12 | \$63,608.42 | (\$75,000.00) | \$53,347.59 | \$86,966.95 | \$59,305.77 |
| FB&T | 801399 | \$3,905.29 | \$2.49 | \$75,000.00 | \$0.00 | \$78,907.78 | \$3,903.13 |
| | Subtotal | \$155,611.41 | \$63,610.91 | \$0.00 | \$53,347.59 | \$165,874.73 | \$63,208.90 |
| Grand Total | | \$4,596,901.18 | \$4,538,663.73 | \$0.00 | \$4,435,729.67 | \$4,699,835.24 | \$5,028,754.18 |

x - Account Closed 09/10/2021

2021/22 Projections vs. Actuals for General Fund As of February 28, 2022

Income

2020/21 Budgeted Income = \$10,982,180.74

| Month | Projected Income | Actual Income | Over/(Under) Projection | Running Balance Over/(Under) Projection |
|-----------|------------------|----------------|-------------------------|---|
| September | \$2,100,891.18 | \$2,180,348.30 | \$79,457.12 | \$79,457.12 |
| October | \$578,760.92 | \$417,537.54 | (\$161,223.38) | (\$81,766.26) |
| November | \$177,911.33 | \$206,545.39 | \$28,634.06 | (\$53,132.20) |
| December | \$158,143.40 | \$217,467.90 | \$59,324.50 | \$6,192.30 |
| January | \$1,651,719.98 | \$1,906,447.53 | \$254,727.55 | \$260,919.85 |
| February | \$886,261.99 | \$854,412.36 | (\$31,849.63) | \$229,070.22 |
| March | \$604,019.94 | | | |
| April | \$562,287.65 | | | |
| May | \$2,821,322.23 | | | |
| June | \$1,083,941.24 | | | |
| July | \$158,143.40 | | | |
| August | \$198,777.46 | | | |

Cash Flow

| Month | Projected Cash Flow | Actual Cash Flow | Over/(Under) Projection | Running Balance Over/(Under) Projection |
|-----------|---------------------|------------------|-------------------------|---|
| September | \$995,801.94 | \$1,031,074.55 | \$35,272.61 | \$35,272.61 |
| October | (\$386,413.59) | (\$521,840.31) | (\$135,426.72) | (\$100,154.11) |
| November | (\$795,563.21) | (\$661,284.81) | \$134,278.40 | \$34,124.29 |
| December | (\$792,802.50) | (\$791,918.72) | \$883.78 | \$35,008.07 |
| January | \$672,316.85 | \$1,037,273.84 | \$364,956.99 | \$399,965.06 |
| February | (\$58,755.31) | (\$45,464.16) | \$13,291.15 | \$413,256.21 |
| March | (\$358,783.14) | | | |
| April | (\$399,329.71) | | | |
| May | \$1,835,990.51 | | | |
| June | \$65,409.41 | | | |
| July | (\$792,802.50) | | | |
| August | (\$860,068.79) | | | |

Expenses

2020/21 Budgeted Expenses = \$11,857,180.74

| Month | Projected Expenses | Actual Expenses | Over/(Under) Projection | Running Balance Over/(Under) Projection |
|-----------|--------------------|-----------------|-------------------------|---|
| September | \$1,105,089.24 | \$1,149,273.75 | \$44,184.51 | \$44,184.51 |
| October | \$965,174.51 | \$939,377.85 | (\$25,796.66) | \$18,387.85 |
| November | \$973,474.54 | \$867,830.20 | (\$105,644.34) | (\$87,256.49) |
| December | \$950,945.90 | \$1,009,386.62 | \$58,440.72 | (\$28,815.77) |
| January | \$979,403.13 | \$869,173.69 | (\$110,229.44) | (\$139,045.21) |
| February | \$945,017.30 | \$899,876.52 | (\$45,140.78) | (\$184,185.99) |
| March | \$962,803.08 | | | |
| April | \$961,617.36 | | | |
| May | \$985,331.72 | | | |
| June | \$1,018,531.83 | | | |
| July | \$950,945.90 | | | |
| August | \$1,058,846.25 | | | |

General Fund Balance

Beginning Reconciled GF Balance = \$2,574,270.19

| Month | Projected GF Balance | Actual Reconciled GF Balance | Over/(Under) Projection |
|-----------|----------------------|------------------------------|-------------------------|
| September | \$3,570,072.13 | \$3,605,344.74 | \$35,272.61 |
| October | \$3,183,658.54 | \$3,083,504.43 | (\$100,154.11) |
| November | \$2,388,095.33 | \$2,422,219.62 | \$34,124.29 |
| December | \$1,595,292.83 | \$1,630,300.90 | \$35,008.07 |
| January | \$2,267,609.68 | \$2,667,574.74 | \$399,965.06 |
| February | \$2,208,854.37 | \$2,622,110.58 | \$413,256.21 |
| March | \$1,850,071.23 | | |
| April | \$1,450,741.52 | | |
| May | \$3,286,732.03 | | |
| June | \$3,352,141.44 | | |
| July | \$2,559,338.94 | | |
| August | \$1,699,270.15 | | |

General Fund Expenditures

| Account Description | Adopted | Disbursed | Remaining | Percent |
|--|------------------------|-----------------------|-----------------------|---------------|
| | Budget | | Balance | Spent |
| 01100 - Regular Instruction | \$5,512,072.57 | \$3,083,892.27 | \$2,428,180.30 | 55.95% |
| 01125 - Academic Intervention (Flex Funding) | \$92,969.96 | \$53,186.42 | \$39,783.54 | 57.21% |
| 01200 - School Age SPED | \$1,171,253.50 | \$643,738.10 | \$527,515.40 | 54.96% |
| 01291 - Preschool Age 3-5 | \$14,201.26 | \$4,380.61 | \$9,820.65 | 30.85% |
| 01292 - Preschool Age 0-2 | \$100.00 | \$0.00 | \$100.00 | 0.00% |
| 01300 - Summer School | \$21,244.67 | \$0.00 | \$21,244.67 | 0.00% |
| 02120 - Guidance Counselor | \$335,648.14 | \$192,393.65 | \$143,254.49 | 57.32% |
| 02130 - Health Services | \$73,122.49 | \$44,808.47 | \$28,314.02 | 61.28% |
| 02141 - School Psychologist - School Age | \$71,725.99 | \$41,218.44 | \$30,507.55 | 57.47% |
| 02151 - Speech Path & Deaf Ed | \$195,498.80 | \$111,225.77 | \$84,273.03 | 56.89% |
| 02152 - Speech Path & Deaf Ed | \$450.00 | \$0.00 | \$450.00 | 0.00% |
| 02161 - Occupational Therapy | \$34,000.00 | \$21,493.38 | \$12,506.62 | 63.22% |
| 02171 - Physical Therapy | \$12,500.00 | \$5,745.00 | \$6,755.00 | 45.96% |
| 02173 - Physical Therapy | \$750.00 | \$585.00 | \$165.00 | 78.00% |
| 02190 - Student Activities | \$165,343.96 | \$100,822.08 | \$64,521.88 | 60.98% |
| 02213 - Instructional Staff Training | \$10,000.00 | \$4,715.66 | \$5,284.34 | 47.16% |
| 02220 - Media Center | \$249,590.88 | \$155,728.14 | \$93,862.74 | 62.39% |
| 02230 - Technology Support | \$187,123.29 | \$115,362.71 | \$71,760.58 | 61.65% |
| 02240 - Assessment Coordinator | \$10,701.28 | \$11,584.68 | (\$883.40) | 108.26% |
| 02310 - Board of Education | \$42,850.00 | \$18,980.25 | \$23,869.75 | 44.29% |
| 02320 - Superintendent | \$294,548.01 | \$171,092.78 | \$123,455.23 | 58.09% |
| 02330 - District Legal Services | \$50,000.00 | \$6,295.68 | \$43,704.32 | 12.59% |
| 02410 - Principal | \$637,452.41 | \$369,175.46 | \$268,276.95 | 57.91% |
| 02510 - Business Office | \$228,406.51 | \$109,123.77 | \$119,282.74 | 47.78% |
| 02610 - Custodial | \$429,128.36 | \$277,090.53 | \$152,037.83 | 64.57% |
| 02620 - Building Maintenance | \$818,140.32 | \$393,531.68 | \$424,608.64 | 48.10% |
| 02630 - Grounds Maintenance | \$161,842.54 | \$79,729.69 | \$82,112.85 | 49.26% |
| 02640 - Equipment Repair & Maintenance | \$34,199.31 | \$17,537.27 | \$16,662.04 | 51.28% |
| 02650 - Non-Pupil Vehicle | \$35,000.00 | \$1,357.11 | \$33,642.89 | 3.88% |
| 02660 - Security | \$11,000.00 | \$2,187.60 | \$8,812.40 | 19.89% |
| 02670 - Safety | \$24,000.00 | \$16,422.77 | \$7,577.23 | 68.43% |
| 02710 - School Bus Driving | \$259,427.69 | \$98,566.40 | \$160,861.29 | 37.99% |
| 02712 - School Age SPED Driving | \$2,304.79 | \$2,783.68 | (\$478.89) | 120.78% |
| 02713 - Below Age 5 SPED Driving | \$25,830.51 | \$2,883.39 | \$22,947.12 | 11.16% |
| 02730 - School Bus Driving Vehicle Maintenance | \$85,651.51 | \$39,140.70 | \$46,510.81 | 45.70% |
| 02732 - School Age SPED Vehicle Maintenance | \$2,000.00 | \$484.51 | \$1,515.49 | 24.23% |
| 03535 - High Ability Learners | \$46,064.89 | \$24,779.67 | \$21,285.22 | 53.79% |
| 06200 - Title IA | \$146,693.00 | \$82,473.08 | \$64,219.92 | 56.22% |
| 06406 - IDEA Preschool (619) Base Allocation | \$2,206.00 | \$2,274.00 | (\$68.00) | 103.08% |
| 06408 - IDEA Part B (611) | \$169,614.00 | \$116,085.62 | \$53,528.38 | 68.44% |
| 06412 - IDEA Non-Public | \$3,262.00 | \$3,308.21 | (\$46.21) | 101.42% |
| 06421 - IDEA Part B (611) ARP | \$33,377.00 | \$14,716.32 | \$18,660.68 | 44.09% |
| 06422 - IDEA Preschool (619) Base Allocation ARP | \$2,714.00 | \$786.00 | \$1,928.00 | 28.96% |
| 06423 - IDEA Non-Public ARP | \$686.00 | \$686.00 | \$0.00 | 100.00% |
| 06700 - Carl Perkins | \$0.00 | \$458.00 | (\$458.00) | |
| 06990 - Other Federal Grants | \$0.00 | \$91,100.00 | (\$91,100.00) | |
| 06998 - ESSER III | \$97,485.10 | \$56,852.95 | \$40,632.15 | 58.32% |
| 08000 - Transfers (Outgoing) | \$55,000.00 | \$55,000.00 | \$0.00 | 100.00% |
| 09000 - Reimbursed by Other Funds/Entities | \$0.00 | \$3,124.31 | (\$3,124.31) | |
| Total | \$11,857,180.74 | \$6,648,907.81 | \$5,208,272.93 | 56.07% |

General Fund Revenues

| Account Description | Adopted Budget | Received | Remaining Balance | Percent Received |
|--|------------------------|-----------------------|-----------------------|------------------|
| 01100 - Taxes Levied/Assessed | \$9,104,058.74 | \$2,791,005.58 | \$6,313,053.16 | 30.66% |
| 01115 - Carline Taxes | \$3,500.00 | \$0.00 | \$3,500.00 | 0.00% |
| 01120 - Public Power District Sales Tax | \$35,000.00 | \$0.00 | \$35,000.00 | 0.00% |
| 01125 - Motor Vehicle Taxes | \$420,000.00 | \$239,698.79 | \$180,301.21 | 57.07% |
| 01140 - Penalty & Interest on Delinquent Taxes | \$17,750.00 | \$11,180.63 | \$6,569.37 | 62.99% |
| 01370 - Preschool Tuition and Fees | \$17,500.00 | \$16,130.00 | \$1,370.00 | 92.17% |
| 01510 - Interest | \$5,000.00 | \$3,496.41 | \$1,503.59 | 69.93% |
| 01910 - Rental of School Facilities & Equipment | \$8,000.00 | \$6,360.00 | \$1,640.00 | 79.50% |
| 01911 - Local License Fees | \$3,750.00 | \$27.33 | \$3,722.67 | 0.73% |
| 01920 - Contributions and Donations | \$1,000.00 | \$1,000.00 | \$0.00 | 100.00% |
| 01921 - Police Court Fines | \$750.00 | \$50.00 | \$700.00 | 6.67% |
| 01960 - Misc. Revenue from Other Gov't. Units | \$0.00 | \$3,150.00 | (\$3,150.00) | |
| 01990 - Miscellaneous Local Revenue | \$300.00 | \$0.00 | \$300.00 | 0.00% |
| 02110 - County Fines & License Fees | \$30,000.00 | \$5,951.10 | \$24,048.90 | 19.84% |
| 03110 - State Aid | \$112,224.00 | \$67,332.00 | \$44,892.00 | 60.00% |
| 03120 - Special Education - School Age | \$575,000.00 | \$230,151.00 | \$344,849.00 | 40.03% |
| 03125 - SPED Transportation - School Age | \$2,000.00 | \$0.00 | \$2,000.00 | 0.00% |
| 03131 - Property Tax Credit | \$0.00 | \$40,712.06 | (\$40,712.06) | |
| 03180 - Pro-Rate Motor Vehicle | \$0.00 | \$7,285.22 | (\$7,285.22) | |
| 03400 - State Apportionment | \$92,300.00 | \$106,852.51 | (\$14,552.51) | 115.77% |
| 03535 - High Ability Learners Payments | \$7,750.00 | \$7,822.00 | (\$72.00) | 100.93% |
| 04505 - "ESSA Title I, Part A" | \$113,645.00 | \$39,489.00 | \$74,156.00 | 34.75% |
| 04509 - "ESSA Title II, Part A" | \$23,048.00 | \$0.00 | \$23,048.00 | 0.00% |
| 04516 - IDEA Preschool Base (619) | \$3,139.00 | \$0.00 | \$3,139.00 | 0.00% |
| 04518 - IDEA Part B (611) Base & E-P Allocation | \$169,614.00 | \$18,355.00 | \$151,259.00 | 10.82% |
| 04521 - IDEA Non-Public | \$3,262.00 | \$0.00 | \$3,262.00 | 0.00% |
| 04525 - Carl Perkins Grant | \$2,000.00 | \$458.00 | \$1,542.00 | 22.90% |
| 04530 - Other Federal Receipts - Categorical | \$0.00 | \$14,700.00 | (\$14,700.00) | |
| 04708 - Medicaid in Public Schools (MIPS) | \$15,000.00 | \$14,968.07 | \$31.93 | 99.79% |
| 04709 - Medicaid Administrative Activities (MAAPS) | \$15,000.00 | \$4,110.27 | \$10,889.73 | 27.40% |
| 04998 - ESSER III | \$159,590.00 | \$38,200.00 | \$121,390.00 | 23.94% |
| 05300 - Sale of Property | \$10,000.00 | \$2,513.00 | \$7,487.00 | 25.13% |
| 05301 - Insurance Adjustments | \$27,000.00 | \$0.00 | \$27,000.00 | 0.00% |
| 05690 - Other Non-revenue Receipts | \$5,000.00 | \$0.00 | \$5,000.00 | 0.00% |
| Total | \$10,982,180.74 | \$3,670,997.97 | \$7,311,182.77 | 33.43% |

Bank Statement Reconciliation

Description

Adjustment Date

Adjustment Amount

Minden High School

02/01/2022 through 02/28/2022

Bank Statement Reconciliation Summary

| | |
|------------------------------------|---------------|
| Statement Balance | \$ 387,954.52 |
| - Outstanding checks | \$ 20,015.95 |
| + Outstanding Deposits | \$ 0.00 |
| + Outstanding Adjustments | \$ 0.00 |
| - Outstanding Investment Transfers | \$ 0.00 |
| Total | \$ 367,938.57 |
| + Investments | \$ 37,000.00 |
| Book Balance | \$ 404,938.57 |

Checks For Payment Listing

| Date | Check Number | Payee | Reason | Amount |
|------------|--------------|---|--|--------------|
| 03/15/2022 | 2768 | Ameritas Life Insurance Corp. | Ameritas Tsa | \$ 500.00 |
| 03/15/2022 | 2769 | Ameritas Life Insurance Corp.. | Vision Insurance | \$ 1,065.78 |
| 03/15/2022 | 2770 | Blue Cross Blue Shield | Dental Insurance | \$ 703.58 |
| 03/15/2022 | 2770 | Blue Cross Blue Shield | District Dental Insurance | \$ 252.79 |
| 03/15/2022 | 2770 | Blue Cross Blue Shield | District HDHP Health Ins 2PT | \$ 2,432.62 |
| 03/15/2022 | 2770 | Blue Cross Blue Shield | District HDHP Health Ins 9 Mo | \$ 1,400.80 |
| 03/15/2022 | 2770 | Blue Cross Blue Shield | District HDHP Health Ins FAM | \$ 11,361.42 |
| 03/15/2022 | 2770 | Blue Cross Blue Shield | District HDHP Health Ins SNG | \$ 1,783.98 |
| 03/15/2022 | 2770 | Blue Cross Blue Shield | District Health Ins 2PT | \$ 30,158.52 |
| 03/15/2022 | 2770 | Blue Cross Blue Shield | District Health Ins 9 Mo | \$ 13,222.62 |
| 03/15/2022 | 2770 | Blue Cross Blue Shield | District Health Ins FAM | \$ 86,878.37 |
| 03/15/2022 | 2770 | Blue Cross Blue Shield | District Health Ins SNG | \$ 5,594.72 |
| 03/15/2022 | 2770 | Blue Cross Blue Shield | District Health Ins SPD | \$ 10,149.44 |
| 03/15/2022 | 2770 | Blue Cross Blue Shield | District Health Ins Split | \$ 1,918.22 |
| 03/15/2022 | 2770 | Blue Cross Blue Shield | Feba Bcbs Dental 2PT | \$ 616.74 |
| 03/15/2022 | 2770 | Blue Cross Blue Shield | Feba Bcbs Dental FAM | \$ 1,305.65 |
| 03/15/2022 | 2770 | Blue Cross Blue Shield | Feba Bcbs Dental SPD | \$ 250.70 |
| 03/15/2022 | 2771 | Cavalry SPV I, LLC | Kearney County Court Cavalry | \$ 195.71 |
| 03/15/2022 | 2772 | Horace Mann Life Insurance Company | Horace Mann Life Insurance | \$ 975.00 |
| 03/15/2022 | 2773 | Madison National Life Insurance Co., Inc. | Feba Life Insurance | \$ 249.10 |
| 03/15/2022 | 2773 | Madison National Life Insurance Co., Inc. | Long-Term Disability | \$ 1,291.94 |
| 03/15/2022 | 2773 | Madison National Life Insurance Co., Inc. | Term Life Policy | \$ 504.36 |
| 03/15/2022 | 2774 | Minden Exchange Bank & Trust Co. | HSA Contribution | \$ 4,373.18 |
| 03/15/2022 | 2775 | Minden Public Schools | District Court | \$ 1,136.00 |
| 03/15/2022 | 2775 | Minden Public Schools | F/b Dependent Care | \$ 4,916.70 |
| 03/15/2022 | 2775 | Minden Public Schools | F/b Medical Dental | \$ 3,470.89 |
| 03/15/2022 | 2775 | Minden Public Schools | Increased Retirement Percent | \$ 13,400.19 |
| 03/15/2022 | 2775 | Minden Public Schools | NE Retirement | \$ 90,923.66 |
| 03/15/2022 | 2776 | Minden Public Schools. | Computer Lease Purchase | \$ 482.68 |
| 03/15/2022 | 2777 | Mps Payroll | Federal Withholding | \$ 41,848.15 |
| 03/15/2022 | 2777 | Mps Payroll | FICA | \$ 67,040.52 |
| 03/15/2022 | 2777 | Mps Payroll | Medicare | \$ 15,678.98 |
| 03/15/2022 | 2778 | Mps Payroll NE Income Tax | State Withholding - NE | \$ 18,717.50 |
| 03/15/2022 | 2779 | New York Life | Ny Life Tsa | \$ 200.00 |
| 03/15/2022 | 2780 | Amazon Capital Services, Inc. | MS/HS Technology Supplies | \$ 19.78 |
| 03/15/2022 | 2780 | Amazon Capital Services, Inc. | HS CAD/Art Printer & Ink | \$ 3,524.40 |
| 03/15/2022 | 2780 | Amazon Capital Services, Inc. | HS Media Center Supplies | \$ 50.85 |
| 03/15/2022 | 2780 | Amazon Capital Services, Inc. | HS Technology Supplies | \$ 82.99 |
| 03/15/2022 | 2781 | Aurora Cooperative | Fuel | \$ 5,036.18 |
| 03/15/2022 | 2782 | Black Hills Energy | Utilities | \$ 7,028.17 |
| 03/15/2022 | 2783 | Border States Industries Inc | HS Lighting Control Repairs | \$ 5,074.42 |
| 03/15/2022 | 2784 | Cardmember Service | Bus Driver Records | \$ 7.50 |
| 03/15/2022 | 2784 | Cardmember Service | HS Ag Supplies | \$ 109.50 |
| 03/15/2022 | 2784 | Cardmember Service | HS Media Center Supplies | \$ 25.95 |
| 03/15/2022 | 2784 | Cardmember Service | HS Web/Cloud Based Software | \$ 5.00 |
| 03/15/2022 | 2784 | Cardmember Service | Neuroscience Symposium Registration | \$ 125.00 |
| 03/15/2022 | 2785 | Century Link Long Distance | Telephone Services | \$ 5.63 |
| 03/15/2022 | 2786 | CenturyLink - Regular Telephone | Telephone Service | \$ 457.32 |
| 03/15/2022 | 2787 | City Of Minden | Utilities | \$ 17,798.24 |
| 03/15/2022 | 2788 | Clearfly Communications | Telephone Services | \$ 715.21 |
| 03/15/2022 | 2789 | Communications Engineering, Inc. | HS Intercom Repair | \$ 610.00 |
| 03/15/2022 | 2790 | Computer Hardware, Inc. | EAST/MS Projectors | \$ 15,984.00 |
| 03/15/2022 | 2791 | Cummins Sales and Service | HS Backup Generator Inspection & Service | \$ 669.43 |

Checks For Payment Listing

| Date | Check Number | Payee | Reason | Amount |
|------------|--------------|---|--|--------------|
| 03/15/2022 | 2792 | DAS State Accounting - Central Finance | Internet Service | \$ 326.34 |
| 03/15/2022 | 2793 | Dollar General | MS Custodial & FCS Supplies | \$ 17.65 |
| 03/15/2022 | 2793 | Dollar General | MS Custodial & HS Life Skills Supplies | \$ 38.40 |
| 03/15/2022 | 2794 | Eakes Office Solutions | Custodial Supplies | \$ 262.68 |
| 03/15/2022 | 2795 | Educational Service Unit #10 | SPED Billing & Workshop | \$ 150.08 |
| 03/15/2022 | 2796 | Educational Service Unit #11 | 2nd Qtr Inservice; Workshops | \$ 609.46 |
| 03/15/2022 | 2796 | Educational Service Unit #11 | 2nd Qtr SPED Billing & In-Service Training | \$ 4,724.56 |
| 03/15/2022 | 2797 | Embassy Suites | NSBA Conference Lodging | \$ 164.00 |
| 03/15/2022 | 2798 | Fluency Matters | HS Spanish Textbooks | \$ 99.00 |
| 03/15/2022 | 2799 | Hometown Leasing | Copier & Printer Lease #22795217 | \$ 3,900.00 |
| 03/15/2022 | 2800 | Jim's OK Tire Minden, LLC | Mower Tires | \$ 911.70 |
| 03/15/2022 | 2801 | Joy's Floral & Gifts | Board Supplies | \$ 20.00 |
| 03/15/2022 | 2802 | JW Pepper & Son, Inc. | HS Vocal Music | \$ 396.99 |
| 03/15/2022 | 2803 | Kearney County Health Services | Bus Driver Drug Testing & Physicals | \$ 129.00 |
| 03/15/2022 | 2803 | Kearney County Health Services | CPR Training | \$ 980.00 |
| 03/15/2022 | 2804 | Kearney Hub | Employment Advertising | \$ 40.46 |
| 03/15/2022 | 2805 | Lampe's Clean Air Specialists | HS HVAC Filters | \$ 30.95 |
| 03/15/2022 | 2806 | Landmark Implement Carquest | Vehicle Maintenance Supplies | \$ 359.82 |
| 03/15/2022 | 2807 | Mason's Market | 2nd Grade Supplies | \$ 52.81 |
| 03/15/2022 | 2807 | Mason's Market | FCS Supplies | \$ 307.72 |
| 03/15/2022 | 2807 | Mason's Market | HS Ag Class Supplies | \$ 55.68 |
| 03/15/2022 | 2807 | Mason's Market | HS Life Skills Supplies | \$ 74.30 |
| 03/15/2022 | 2807 | Mason's Market | Kindergarten Supplies | \$ 16.97 |
| 03/15/2022 | 2807 | Mason's Market | MS Life Skills Supplies | \$ 135.07 |
| 03/15/2022 | 2807 | Mason's Market | MS Science Supplies | \$ 13.45 |
| 03/15/2022 | 2807 | Mason's Market | Preschool Supplies | \$ 16.82 |
| 03/15/2022 | 2808 | Matheson Tri-Gas, Inc. | HS Metals Class Supplies | \$ 142.23 |
| 03/15/2022 | 2809 | Medtox Laboratories | Driver Drug Testing | \$ 114.75 |
| 03/15/2022 | 2810 | Menards | Technology Supplies | \$ 120.76 |
| 03/15/2022 | 2811 | Mhs Activities Fund | HS Supplies | \$ 95.32 |
| 03/15/2022 | 2812 | Mid-States Automation & Control, Inc. | HS HVAC Repairs | \$ 1,976.00 |
| 03/15/2022 | 2813 | Miller Body Shop | 2018 Ford Edge Repair | \$ 100.00 |
| 03/15/2022 | 2813 | Miller Body Shop | Equipment Repairs | \$ 600.00 |
| 03/15/2022 | 2813 | Miller Body Shop | Handicap Van Repairs | \$ 225.00 |
| 03/15/2022 | 2813 | Miller Body Shop | Van 13V1 Repairs | \$ 100.00 |
| 03/15/2022 | 2814 | Minden Courier | District Printing & Advertising | \$ 131.36 |
| 03/15/2022 | 2815 | Minden Hardware | Repairs & Supplies | \$ 241.38 |
| 03/15/2022 | 2816 | Minden Office Supply | CO Office Supplies | \$ 2.59 |
| 03/15/2022 | 2816 | Minden Office Supply | HS Supplies | \$ 35.62 |
| 03/15/2022 | 2817 | Mps Petty Cash | Postage & Board Supplies | \$ 85.62 |
| 03/15/2022 | 2818 | Ne Association School Boards | Board Evaluation Software | \$ 650.00 |
| 03/15/2022 | 2818 | Ne Association School Boards | NASB 22-23 Membership Dues | \$ 5,324.00 |
| 03/15/2022 | 2819 | Omaha World Herald | Newspaper Subscription | \$ 296.40 |
| 03/15/2022 | 2820 | One Source | Background Checks | \$ 48.00 |
| 03/15/2022 | 2821 | Perry, Guthery, Haase & Gessford, P.C., L.L.O | Legal Fees | \$ 480.00 |
| 03/15/2022 | 2822 | Pony Express Ford | Bus 21P Service | \$ 69.45 |
| 03/15/2022 | 2822 | Pony Express Ford | Handicap Van Service | \$ 123.48 |
| 03/15/2022 | 2822 | Pony Express Ford | Van 12V2 Service | \$ 97.95 |
| 03/15/2022 | 2823 | Protex Central, Inc. | HS Fire Alarm Repair | \$ 245.00 |
| 03/15/2022 | 2824 | Richard Widdifield | Bus 00A Service | \$ 210.00 |
| 03/15/2022 | 2824 | Richard Widdifield | Bus 20C Service | \$ 210.00 |
| 03/15/2022 | 2824 | Richard Widdifield | Coach Bus Repair | \$ 10,241.31 |
| 03/15/2022 | 2824 | Richard Widdifield | Coach Bus Service | \$ 462.60 |

Checks For Payment Listing

| Date | Check Number | Payee | Reason | Amount |
|--|--------------|--|-----------------------------|----------------------|
| 03/15/2022 | 2825 | The Home Depot Pro | Custodial Supplies | \$ 456.36 |
| 03/15/2022 | 2826 | TPRS Books | HS Spanish Textbook | \$ 49.00 |
| 03/15/2022 | 2827 | University of Nebraska - Lincoln (ASD) | ASD Conference Registration | \$ 215.00 |
| 03/15/2022 | 2828 | Varitronics, LLC | HS Supplies | \$ 583.70 |
| 03/15/2022 | 2829 | Verizon Wireless | Wireless Hotspot Data Plan | \$ 160.04 |
| 03/15/2022 | 2830 | Village Uniform | East Mop & Mat Service | \$ 128.34 |
| 03/15/2022 | 2830 | Village Uniform | HS Mop & Mat Service | \$ 407.50 |
| 03/15/2022 | 2830 | Village Uniform | MS Mop & Mat Service | \$ 296.46 |
| 03/15/2022 | 2831 | Widdifield, James T | February Reimbursement | \$ 510.75 |
| 03/15/2022 | 2832 | William Macgill Co | Nursing Supplies | \$ 1,320.81 |
| 03/15/2022 | 2833 | Wippel, Macie T | Fuel Reimbursement | \$ 20.01 |
| 03/15/2022 | 2834 | Woodward's Disposal Service, Inc. | Shredding Service | \$ 52.00 |
| 03/15/2022 | 2835 | Wright Express Fleet Services | Fuel | \$ 918.07 |
| 03/15/2022 | 2836 | Yanda's Music | Instrument Repair | \$ 143.00 |
| 03/15/2022 | EFT | Minden Exchange Bank - EFT | Direct Deposit Fees | \$ 35.35 |
| Subtotal | | | | \$ 533,889.20 |
| Net Payroll - March 2022 | | | | \$ 380,099.98 |
| Total General Fund Disbursements - March 2022 | | | | \$ 913,989.18 |

Secretary Kevin Raun

Lunch Fund Checks and Liabilities

| Check Number | Date | Payee | Reason | Amount |
|---------------------------------------|-----------|---|--|---------------------|
| EFT | 2/8/2022 | US Foods | Commodities | \$ 5,871.06 |
| 5750 | 2/8/2022 | Cash-wa Distributing Co. | Commodities | \$ 19,816.44 |
| 5751 | 2/8/2022 | LinPepCo Partnership | Beverages | \$ 742.65 |
| 5752 | 2/8/2022 | Hiland Dairy | Milk Products | \$ 6,373.08 |
| 5753 | 2/8/2022 | Minden Office Supply | Lunch Room Supplies | \$ 53.03 |
| 5754 | 2/8/2022 | Apple Acres Orchard | Apples | \$ 320.00 |
| 5755 | 2/8/2022 | Mason's Market | Commodities | \$ 148.02 |
| 5756 | 2/8/2022 | Dollar General | Lunch Room Supplies | \$ 33.15 |
| 5757 | 2/8/2022 | Village Uniform | Kitchen Rag and Apron Service | \$ 230.36 |
| 303 | 3/15/2022 | Ameritas Life Insurance Corp.. | EE Vision Insurance Premiums | \$ 42.66 |
| 304 | 3/15/2022 | Blue Cross Blue Shield | Health & Dental Insurance Premiums | \$ 5,542.60 |
| 305 | 3/15/2022 | Madison National Life Insurance Co., Inc. | EE FEBA Life Insurance Premiums | \$ 20.40 |
| 305 | 3/15/2022 | Madison National Life Insurance Co., Inc. | EE Life Insurance Premiums | \$ 24.99 |
| 305 | 3/15/2022 | Madison National Life Insurance Co., Inc. | Long Term Disability | \$ 16.53 |
| 306 | 3/15/2022 | Minden Exchange Bank & Trust Co. | EE & ER HSA Contributions | \$ 83.37 |
| 307 | 3/15/2022 | Minden Public Schools | EE & ER Retirement Contributions | \$ 2,250.54 |
| 307 | 3/15/2022 | Minden Public Schools | Employee FEBA - Medical/Dental | \$ 166.67 |
| 308 | 3/15/2022 | Mps Payroll | EE & ER FICA, Medicare, & Federal Income Tax | \$ 2,218.83 |
| 309 | 3/15/2022 | Mps Payroll NE Income Tax | EE Nebraska Income Tax Withholding | \$ 270.21 |
| Subtotal | | | | \$ 44,224.59 |
| Net Payroll - March 2022 | | | | \$ 9,076.35 |
| Total Lunch Fund Disbursements | | | | \$ 53,300.94 |

Building Fund Liabilities

| Check Number | Date | Payee | Reason | Amount |
|---|-----------|---|---|----------------------|
| 593 | 3/15/2022 | Rutt's Heating & Air Conditioning, Inc. | CO #2 - MS Roof Replacement - 100% Complete | \$ 14,600.00 |
| 593 | 3/15/2022 | Rutt's Heating & Air Conditioning, Inc. | Discovery Allowance - 76.10% Used | \$ 4,950.00 |
| 593 | 3/15/2022 | Rutt's Heating & Air Conditioning, Inc. | Less: Retainage | \$ (1,955.00) |
| 593 | 3/15/2022 | Rutt's Heating & Air Conditioning, Inc. | Retainage Paid Out - Project 100% Complete | \$ 124,965.10 |
| Total Building Fund Disbursements - March 2022 | | | | \$ 142,560.10 |

**Minden Public Schools
C.L. Jones Middle School
March 2022**

**Report to the Board of Education
Mrs. Chelsey Jensen, Administrator**

The following information is a list of highlights at C.L. Jones Middle School:

Whippet of the Month Awards-

The C.L. Jones Middle School staff nominate students that demonstrate outstanding character, behavior, and commitment to academic progress. These students were presented with a certificate of achievement and a Pizza Hut gift certificate for their hard work. Congratulations to the following:

4th- Hartleigh Bienhoff, Laynee Joyce

5th- Ceirra Riley, Morgan Johnson

6th- Addyson Meyer, Evie Sharkey

7th- Kanin Heath, Jada Gant

8th- Christina Nielsen-Trine, Matthew Jorgensen



6th & 7th Grade Science-

We've concluded interviews for the 6th & 7th grade science position at C.L. Jones Middle School. I'm happy to recommend Mrs. Taylor Shelton for this position. Mrs. Shelton is already a resident and Minden and comes to us with experience in teaching middle school science. We are excited to welcome Mrs. Shelton!

7th Grade Language Arts-

We've concluded interviews for the 7th grade language arts position at C.L. Jones Middle School. I'm pleased to recommend Mrs. Meghan Gifford for this position. Mrs. Gifford comes to us with a wealth of knowledge and experience teaching middle school language arts. We are excited to add her to our team!

5th Grade-

We've concluded interviews for the 5th grade teaching position at C.L. Jones Middle School. I'm happy to recommend Mrs. Rebecca McDowell for this position. Mrs. McDowell is a Minden native and comes to us with a background in elementary education and special education. She will be a great addition to our faculty!

Quiz Bowl-

There were 7 eighth graders and 2 seventh graders placed 4th out of 13 teams at the ESU11 junior high quiz bowl held at the Nebraska Prairie Museum in Holdrege on February 16th. Congratulations to our MS Quiz Bowl team!

Journalism 8-

Please join us for the 8th grade journalism class' final project- CLJMS premier of " Educators: Infinity War" on March 15, 2022 at 7pm.

"Educators: Infinity War"
CLJMS Movie Premier Event
Tuesday, March 15
MPS Auditorium
Doors open at 6, show starts at 7
Formal attire requested



Middle School Dance-

The C.L. Jones Middle School Student Council organized a 7th & 8th grade dance on February 18th at C.L. Jones Middle School. The students and staff enjoyed a fun evening with good company, delicious snacks and plenty of glow sticks! Thank you to the C.L. Jones Student Council, Mr. Nichols, and Mrs. Osgood- Kring for coordinating a fun night of events for us!

Spring Break Dress-up Days-

Monday- Made in the Shade Monday-
Wear your favorite hat



Dress to Rest Tuesday-

Wear your PJs to gear up for your break



Wednesday- Friday: Enjoy your time off!

Future Problem Solving (FPS)-

CLJMS will have three 6th grade teams participating in the state elementary FPS competition and three 7/8th grade teams in the middle grade competition on April 9th at UNK.

Students must complete a 6 step process in a 2 hour period by identifying challenges, an underlying problem, solutions, and creating an action plan.

The future scene for the State Bowl on the topic of "Mining" will be a narrowly focused scenario. The future scene is likely to contain some futuristic twists to make the situation appear to be new but some of the information contained in your research will still apply. The students' challenge will be to discover what research information concerning this topic will be applicable to the future scene situation. Good luck to our FPS teams! Thank you Mrs. Clapper and Ms. Jenkins for leading this group of talented individuals!

Minden High School

March 2022

Board of Education Report



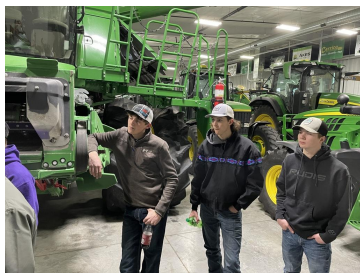
“Education is for improving the lives of others and leaving your community and world better than you found it.” - Marian Wright Edelman. This month, Minden High School students made Minden an even better place by representing MHS in sports/activities, in their search for higher education, and giving from the heart for a fellow student. They have used their bright minds to speak about hard issues and highly debated topics and their talents to bring entertainment and joy to the community and half way across the world. We just couldn’t ask for better students and leaders here at MHS.

STATE WRESTLING: Minden wrestlers took 6 boys and 3 girls to the state meet this year. Orrin Kuehn and Robert Nelson brought home 5th place medals and Hunter Fredrickson was 6th place. Our 3 girls made history by being the first girls wrestlers to compete at state - Aliena Osterbuhr, Sonny Sowles, and Savannah Koch.

PARENT TEACHER CONFERENCES: MHS parent teacher conferences percentages for the spring were rather low, which is normal for spring conferences. Our teachers visited with an average of 34% of the students’ parents.

SECC TRIP:

Seven juniors got a jumpstart on college planning by attending a campus visit at Southeast Community College in Milford on Monday. It was a cold day, but they learned a great deal about what SECC offers on the Milford Campus!



FFA WEEK:

Last week, the Minden FFA Chapter celebrated National FFA Week with a week full of activities and fun! On Monday, members kicked off the week by wearing their FFA shirt and having breakfast. Tuesday, members wanted to give back to the staff of Minden High School and fixed them a pulled pork lunch. Students also dressed up as their favorite teacher. Wednesday was all about recruitment! Members organized agriculture related games for the 8th graders to play in the 2nd Annual Ag Olympics. Eighth grade students competed in barrel racing, pedal tractor races, steer roping, penny-in-a-haystack, wood working, milk chugging, butter carving, and tug-of-war. The students had a lot of fun and were given a goodie bag at the end of the event. On Thursday we focused on the country and did a dirtiest vs. cleanest truck contest. Sam Cederburg and his dead bird stuck to the grill placed first for dirtiest and Nick Bridges won the cleanest. We ended the week with the annual Drive Your Tractor to School Parade. Students met at Landmark at 7:30am and paraded to the school. Throughout the week, students voted with dollars on which teacher they'd like to see kiss a baby lamb. Mr. Gracey won the honor and thanks to Hannah Donley, he greeted Norman the lamb with a kiss. Over \$300 was raised and will go directly to Emma Danielson and her family. It was a week full of fun and celebration!

SPEECH: Speech Team has been competing through the months of January and February. Our regular season includes eight Saturday invitationals. We have had 36 students compete in speech meets. We have earned 11 novice gold medals, 78 other novice medals, 8 varsity gold medals, and 76 other varsity medals for a total of 173 medals across the season so far. We have Holdrege Invite, SWC Speech at Broken Bow, District Speech at Grand Island Central Catholic, and the state meet in Kearney left in the season. It has been a great season seeing the veteran varsity members achieve great things and also the new members to the team growing and becoming confident speakers week by week.

SHOW CHOIR: In the spirit of spreading positivity, our Amethyst and Madrigal members took on the challenge of preparing some contemporary-college-a-capella music to utilize for our "Singing Valentines" this past month. Students from a variety of classes (from Government to PE) were excited to see some of their peers show up at random, all across MHS and CLJMS, to serenade some of our incredible educators to the tune of "Thank you for being a friend". On the other hand, after countless hours of music and choreography rehearsals, our Amethyst Show Choir will finally begin performing to our audiences starting March 29th at the Northeast College Competition of Excellence. We are excited for a great season ahead.

ART CLUB: The Art Club spent the first semester preparing for the holiday ornament sale. The club made handmade ornaments to raise funds. Second semester the club played a game called Exquisite Corpse, which is a method by which a collection of words or images is collectively assembled. It was played by artists in the 1920s. The artists made some crazy and funny creations. The club also hopes to take an in-state trip in March to see galleries in Lincoln. Lastly the club plans to have an architect and interior designer speak to them about their careers in the arts during the April meeting.

STUDENT COUNCIL: The student council sent a care package to an MHS graduate serving our country overseas. She has two young daughters waiting for her return and the Student Council couldn't forget about them and delivered a care package full of delightful gifts that made 2 little girls feel very special.

HIGH SCHOOL SCIENCE: This year has been a fun year. We did a little switching around this year with our required class for the 9th graders, but I think we are on the right track. In my previous years of experience here at MHS, we offered physical science to the freshmen. In order to align with the MAP test, we switched to having the freshman class take earth science instead of physical science. All students still need three years of science to graduate. Physical science will now be offered to 10th-12th grade students. I like this set up and I think it will help our students succeed in state tests.

I teach a semester-long portion of earth science to the 9th graders. This is my first year of teaching earth science to the 9th graders. Just like the setup before, I teach half of the freshmen for a semester and Mrs. Soelberg and I switch at semester. This style continues to work well. Our last unit of this spring semester Mrs. Soelberg and I will collaborate with each others' classes for the students to complete a project on human impact. I think the 9th grade earth science course is working well. Some of the topics that I teach in my semester long class include atmosphere, weather, climate, and space.

I also teach earth science to the older students as well. This course I get to teach the entire year. This class is available for the students that didn't take earth science as a freshman (our 10th-12th graders). Eventually this may phase out with earth science being required as freshman. This course goes into more detail than the 9th grade course.

Both earth science courses cover the same topics, but the upper level students get into more detail and are challenged more.

The last class I have is science topics. Science Topics is a general science class that reviews concepts from all science disciplines (physical, earth, life). Class projects, presentations and labs are the backbone of the course. I like giving the students a topic to research and have the students present their findings to the rest of the class. I feel that this style provides students with research skills, problem solving skills, and communication skills. This style creates situations where learning is student-driven. Students love labs. This is hands-on experience for the students to "do" science. We just wrapped up our unit on the six simple machines and Rube Goldberg machines and now we are on the topic of predator/prey relationships.

Minden Public Schools
East Elementary/Minden Public Preschool
March 2022 Report to the Board of Education
Mrs. Sandy Pohl, Administrator

The process of Invention Convention has begun with the lead of Mrs. Rowley. She works with students in the third grade and at the middle school to create some unique inventions to share through presentations with others in our educational service unit. If the board recalls from the 2021 event, two Minden Public Schools students were awarded the overall grand prize with their hoverboard snow removal invention. The Invention Convention will take place on March 24th.

East Elementary and Minden Public Preschool students celebrated Read Across America during the week of February 28th. It was a week of celebrating our love for reading.

Preparations for kindergarten registration are being made. We invite parents to fill out the necessary paperwork and invite the incoming students and their families to kindergarten during the first part of August to spend special time with their teacher right before school starts.

On February 21st, East Elementary and the Preschool held a reverse field trip career day. On this day, our school invited in people with a variety of careers and talents to present to all students in order to connect with community members and broaden students' horizons of their potential future careers. Josh Jorgensen, Whippet announcer, presented to students with the focus of his presentation being the importance of volunteerism, connection and encouragement of others through community service, and support of our school system. Shelby Benson, hairdresser, shared with students the number of hours and level of commitment it takes to learn a skill as well as the importance of knowing that it takes a license to cut hair and how you should never cut your own. Shane Schmidt, construction/contractor, took time to show students the excitement of his trade and stressed the importance of choosing a career you have a love for. Rusty Rhynalds, auctioneer/realtor, shared with the kids how he learned to become an auctioneer as well as practicing tongue twisters with the kids so they could talk fast like an auctioneer. Carli Oberg, local baker, showed kids how she uses her creativity to produce goods for customers in our community as well as the excitement it gives her to give others joy through her work. Lindy Hartman and Michelle Craig, Registered Nurse and Physician's Assistant, gave their time to express to kids the importance of working hard at

school and the dedication it takes in studies as well as the joy of having a career that helps and takes care of other people. Sam Stadler and John Norgaard, local farmers, spoke to students about the importance of their job putting food on the tables of families across our country in addition to providing for their own families. They also educated students about the different types of equipment they use and demonstrated how kids should stay safe around the equipment. Jarvis Kring of the Minden Police Department, presented to students on how police officers keep our community safe and how they are approachable and friendly people that want to help others.

During our reverse field trip career day, thirteen teachers from East Elementary traveled to Kearney in order to observe English Language Arts curriculum in action as yet another way we are preparing for our potential upcoming curriculum adoption.

The following are just a few of the notable happenings on our calendar during the fourth quarter: dental screenings, NSCAS testing for our third graders, National Honor Society members from the high school will be engaging with second graders, National Ag Day will send high school FFA students to East, and students artwork will be displayed at the Minden Opera House.



MINDEN PUBLIC SCHOOLS
ACTIVITIES/ATHLETIC DEPARTMENT
Ed Rowse, Asst. Prin./Act. Dir.

622 W. 3rd Street
Minden, NE 68959-1598
308-832-2254 School
308-832-1892 Fax

MARCH 2022 BOARD MEETING
ACTIVITY DIRECTOR REPORT

The high school wrestling team completed their season at the 2022 Nebraska State Wrestling Tournament held in Omaha. The team qualified 6 wrestlers for the tournament: Evan Smith 152 lbs., Robert Nelson 120 lbs., Orrin Kuehn 132 lbs., Daulton Kuehn 220 lbs., Braxton Janda 195 lbs., and Hunter Fredrickson 182 lbs. Robert and Orrin earned 5th place medals and Hunter earned a 6th place medal. Congratulations on a great season!

The girls basketball team completed their season at sub districts in Broken Bow on February 15th. Our girls lost to Gothenburg in a great battle. The team finished with a 18-6 record. The team had 19 players and showed a great deal of improvement this season. Our team had six games this season against teams playing at the state tournament and even had two wins against them. We are looking forward to how our team looks next season!

The boys basketball team competed in sub districts at Kearney Catholic Tuesday, February 22nd. Our team defeated Cozad in the first round of sub districts and then lost to Kearney Catholic in the sub district final. Our team then qualified for a sub state game against Ashland-Greenwood. We lost a tough game but this was a great learning experience for the future. They finished their season with a 17-9 record. The team had 26 players this season. We will return most of our team and look forward to seeing our team compete next season.

The Minden Speech team has continued to improve week after week placing more and more students in both varsity and novice divisions. The Speech Team traveled to Broken Bow last Monday for SWC and finished third place as a team in conference. Our conference is very high quality in the arts and this is a great accomplishment for our team. Our team competed in districts at Grand Island Central Catholic Wednesday, March 2nd. Our team finished runner up and we are sending 6 events to State! State Speech is Wednesday, March 16th at Kearney High.

Minden will be hosting its second annual Quiz Bowl competition Monday, March 21st. We will have two rooms going at the same time with ten teams competing in the contest. Quiz Bowl members will also compete in the SWC Quiz Bowl in Cozad on April 13th at 11 am. The ESU 11 State Quiz Bowl will be held in Holdrege on April 6th. Our high school quiz bowl team won the Franklin quiz bowl competition last week!

Minden High School will also be hosting a Red Cross Blood Drive Friday, March 25th in the Activity gym. The event starts at 8 am, please get an appointment or stop in to give blood.

The spring sports season started Monday, February 28th. The boys golf team has 20 players and will have their first contest at home against Adam Central on Thursday, March 31st. There are around 40 girls and 40 boys competing on our track teams this spring, the numbers may change a bit for the next week or so. Some of our team will be competing at the UNK invite Friday, March 18th.

Spring sports (Girls and Boys Track) for the middle school will start Monday, March 14th. Coaches are checking out uniforms this week to be prepared for the first day of training.

**FBLA State Leadership Conference will be April 11th-12th-13th in Kearney.
FCCLA State Leadership Conference will be April 3rd-4th-5th in Lincoln.**

Ed Rowse

Superintendent Report

Meeting: March Board Meeting

Date: 3/14/22

Mr. Widdifield

=====

Topics:

New Staff: We are working on interviews for our next Activities Director and other new staff. We have a lot of great things happening and have the potential to enhance a lot of areas in our district. It is exciting to see the positive changes and directions we are going in this district.

Summer projects: Summer projects are set and we have several items that we will tackle again this summer. The new freezer/cooler for the CLJ kitchen, concrete projects around CLJ, and water improvements for both the middle school and high school.

East Elementary: The Board had an opportunity to visit and tour the elementary school. We have several items that need to be addressed in this building. We will be working on a plan to address these needs and what we want as a community and district for our incoming preschoolers and the potential growth of our community.

Thank You: I want to thank the staff, administration, and other volunteers for the help we received this winter. The winter season is long and takes a lot of people to make everything work. I appreciate the community support and what our staff and administration do outside school hours.

StudentsGraduation

To participate in commencement exercises or receive a Minden Public Schools diploma a student must fully complete all requirements for graduation prior to the official commencement exercises, and complete other administrative requirements or conditions. Students who graduate from Minden Public Schools must accumulate 220 hours. The total graduation requirements must include the following core curriculum:

| | | |
|---|-----|----------------|
| English | 40 | Semester Hours |
| Science | 30 | Semester Hours |
| Math | 30 | Semester Hours |
| Social Studies (American History and American Government and one other Social Studies course) | 30 | Semester Hours |
| Physical Education | 10 | Semester Hours |
| Speech I | 5 | Semester Hours |
| *Personal Finance | 5 | Semester Hours |
| Required | 150 | Semester Hours |
| Electives | 70 | Semester Hours |

*Personal Finance graduation requirement will start with the class of 2024.

Legal Reference: Neb. Rev. Stat. Sec. 79-729
NDE Rule 10

Date of Adoption:



MINDEN PUBLIC SCHOOLS
ACTIVITIES/ATHLETIC DEPARTMENT
Ed Rowse, Asst. Prin./Act. Dir.

622 W. 3rd Street
Minden, NE 68959-1598
308-832-2254 School
308-832-1892 Fax

To Mr. Widdifield and the Minden Public School Board of Education,

I am writing this letter asking for you to accept my resignation from my position as Activities Director and Assistant Principal of Minden Public Schools. I am planning on retiring from education at this time and will be looking for employment that better suits where my wife and family are at this point in our lives. This has been a truly difficult decision to make as I have been employed at MPS and part of the best team I could have ever asked for since 1994.

I want you to know how proud I am of Minden Public Schools and our community that helped shape me into the person I am and allowed me a safe and stable place to build and raise our family over these years. Lonna and I do not plan on leaving this area but instead want the flexibility to go see our kids and we are expecting our first grandchild in August. The past 28 years have gone too fast and I don't want to look back and wish I had spent more time with my family after it's too late.

Thank you for trusting me and empowering me to do my job to the best of my ability. I love this school so much and will always be a Whippet!

Sincerely,

Ed Rowse

February 21, 2022

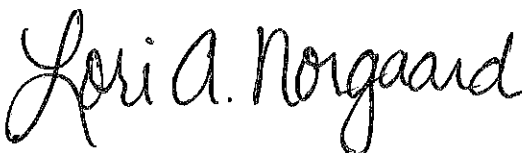
Mr. Widdifield and Board of Education-Minden Public Schools
Minden, Nebraska

Dear Mr. Widdifield and Board of Education-Minden Public Schools:

Please accept this letter as formal notice of my retirement from Minden Public Schools, effective at the end of the 2021-2022 school year.

I want to thank you all for allowing me to live the dream of teaching for 39 years. I appreciate all of your support and kindness during my career. It is a bittersweet decision that has taken much careful thought and consideration.

Sincerely,

A handwritten signature in black ink that reads "Lori A. Norgaard". The signature is written in a cursive, flowing style.

Lori A. Norgaard, M.A.Ed.

It is with a heavy heart that I inform you that I will not be returning to Minden Public Schools next year. This year has taught me so much and made me a much stronger teacher, but has also shown me that it's okay to take a step back in order to take care of myself and family first. I am one who gives my heart and soul to what I am invested in, but lately I haven't had enough left over for my life outside of these doors.

I don't have a plan yet for next year, but am excited to see where the wind blows me! I am looking at going back to school or perhaps finding a way to help in my family's businesses.

The hardest part is leaving my CLJMS family. This staff feels like family and I will miss them all tremendously! Mrs. Jensen is a phenomenal person, leader, and administrator. In fact, if it wasn't for her support, loyalty, and commitment to the students and staff in this building, my decision would have been made a long time ago. She is going to take CLJMS to high and positive places!

I know MPS is in good hands and I see such a bright future for this school! I am proud to always be a Whippet!

Sincerely,
Taylor Herrick

A handwritten signature in black ink that reads "Taylor Herrick". The signature is written in a cursive, flowing style.

3/1/22
CLJMS
5th Grade

Minden Public Schools
2022-2023-Final
School Calendar

| August | | | | | | |
|--------|----|----|----|------|----|----|
| S | M | T | W | T | F | S |
| | 1 | 2 | 3 | 4 | 5 | 6 |
| 7 | 8 | 9 | 10 | (11) | 12 | 13 |
| 14 | 15 | 16 | 17 | 18 | 19 | 20 |
| 21 | 22 | 23 | 24 | 25 | 26 | 27 |
| 28 | 29 | 30 | 31 | | | |

| | |
|---------------|-------------------------------|
| Aug. 1-5 or 9 | Teacher Flex Days-(Pick One) |
| Aug. 3-4 | New Teacher In-Service/ESU 11 |
| Aug. 8 & 10 | Teacher In-Service |
| Aug. 11 | School begins |

| January | | | | | | |
|---------|----|----|----|-----|------|----|
| S | M | T | W | T | F | S |
| 1 | 2 | 3 | 4 | (5) | 6 | 7 |
| 8 | 9 | 10 | 11 | 12 | 13 | 14 |
| 15 | 16 | 17 | 18 | 19 | 20 | 21 |
| 22 | 23 | 24 | 25 | 26 | (27) | 28 |
| 29 | 30 | 31 | | | | |

| September | | | | | | |
|-----------|----|----|----|----|----|----|
| S | M | T | W | T | F | S |
| | | | | 1 | 2 | 3 |
| 4 | 5 | 6 | 7 | 8 | 9 | 10 |
| 11 | 12 | 13 | 14 | 15 | 16 | 17 |
| 18 | 19 | 20 | 21 | 22 | 23 | 24 |
| 25 | 26 | 27 | 28 | 29 | 30 | |

| | |
|----------|---|
| Sept. 5 | NO SCHOOL - Labor Day. |
| Sept. 21 | P/T Conf 1:00 dismissal Conf. 3:00-6:00 |
| Sept. 22 | P/T Conf 1:00 dismissal Conf. 3:00-8:00 |
| Sept. 23 | NO SCHOOL |

| February | | | | | | |
|----------|----|----|----|----|----|----|
| S | M | T | W | T | F | S |
| | | | 1 | 2 | 3 | 4 |
| 5 | 6 | 7 | 8 | 9 | 10 | 11 |
| 12 | 13 | 14 | 15 | 16 | 17 | 18 |
| 19 | 20 | 21 | 22 | 23 | 24 | 25 |
| 26 | 27 | 28 | | | | |

| October | | | | | | |
|---------|----|----|----|----|----|----|
| S | M | T | W | T | F | S |
| | | | | | | 1 |
| 2 | 3 | 4 | 5 | 6 | 7 | 8 |
| 9 | 10 | 11 | 12 | 13 | 14 | 15 |
| 16 | 17 | 18 | 19 | 20 | 21 | 22 |
| 23 | 24 | 25 | 26 | 27 | 28 | 29 |
| 30 | 31 | | | | | |

| | |
|---------|----------------------------|
| Oct.20 | Teacher Inservice |
| Oct. 20 | 1st Quarter Ends (44 Days) |
| Oct. 21 | NO SCHOOL |

| March | | | | | | |
|-------|----|----|----|----|----|----|
| S | M | T | W | T | F | S |
| | | | 1 | 2 | 3 | 4 |
| 5 | 6 | 7 | 8 | 9 | 10 | 11 |
| 12 | 13 | 14 | 15 | 16 | 17 | 18 |
| 19 | 20 | 21 | 22 | 23 | 24 | 25 |
| 26 | 27 | 28 | 29 | 30 | 31 | |

| November | | | | | | |
|----------|----|----|----|----|----|----|
| S | M | T | W | T | F | S |
| | | | 1 | 2 | 3 | 4 |
| 5 | 6 | 7 | 8 | 9 | 10 | 11 |
| 12 | 13 | 14 | 15 | 16 | 17 | 18 |
| 19 | 20 | 21 | 22 | 23 | 24 | 25 |
| 26 | 27 | 28 | 29 | 30 | | |

| | |
|---------|----------------------------------|
| Nov. 23 | 2:00 dismissal for Thanksgiving. |
| Nov. 24 | No School - Thanksgiving break. |
| Nov. 25 | No School - Thanksgiving break. |

| April | | | | | | |
|-------|----|----|----|----|----|----|
| S | M | T | W | T | F | S |
| | | | | | | 1 |
| 2 | 3 | 4 | 5 | 6 | 7 | 8 |
| 9 | 10 | 11 | 12 | 13 | 14 | 15 |
| 16 | 17 | 18 | 19 | 20 | 21 | 22 |
| 23 | 24 | 25 | 26 | 27 | 28 | 29 |
| 30 | | | | | | |

| December | | | | | | |
|----------|----|----|----|----|----|----|
| S | M | T | W | T | F | S |
| | | | | 1 | 2 | 3 |
| 4 | 5 | 6 | 7 | 8 | 9 | 10 |
| 11 | 12 | 13 | 14 | 15 | 16 | 17 |
| 18 | 19 | 20 | 21 | 22 | 23 | 24 |
| 25 | 26 | 27 | 28 | 29 | 30 | 31 |

| | |
|---------|----------------------------------|
| Dec. 22 | 2:00 dismiss for Christmas break |
| Dec. 22 | 2nd Quarter ends (46 days) |

| | |
|---------|--------------------|
| Jan. 4 | Teacher Workday |
| Jan. 5 | School Begins |
| Jan. 27 | Teacher In-Service |

| May | | | | | | |
|-----|----|----|----|----|----|----|
| S | M | T | W | T | F | S |
| | | | | | | 1 |
| 2 | 3 | 4 | 5 | 6 | 7 | 8 |
| 9 | 10 | 11 | 12 | 13 | 14 | 15 |
| 16 | 17 | 18 | 19 | 20 | 21 | 22 |
| 23 | 24 | 25 | 26 | 27 | 28 | 29 |
| 30 | | | | | | |

| | |
|---------|---|
| Feb. 8 | P/T Conf 1:00 dismissal Conf. 3:00-6:00 |
| Feb. 9 | P/T Conf 1:00 dismissal Conf. 3:00-8:00 |
| Feb. 10 | NO SCHOOL |

| | |
|-----------|----------------------------|
| Mar. 8 | 3rd Quarter Ends (43 days) |
| Mar. 9-10 | Spring Break |

| | |
|-----------|------------------------|
| Apr. 7-10 | NO SCHOOL-Easter Break |
|-----------|------------------------|

| | |
|--------|--|
| May 13 | Commencement |
| May 17 | 4th Quarter Ends (45 days) Early Dimissal-12:00 |
| May 17 | Estimated last day for students |
| | Actual last day determined by snow or tournament dismissals. |

| | |
|-----------|---------------|
| May 18-19 | Snow days TBD |
| May 29 | Memorial Day |

| | |
|----------------------|-----|
| Total Student Days | 179 |
| Total Teacher Days | 185 |
| First Semester Days | 90 |
| Second Semester Days | 89 |

| Key | |
|-----|---------------------------|
| ⊗ | NO School |
| □ | Start/End of Qt. and Sem. |
| ○ | Teacher Workdays |

| Student Days by Month | | | |
|-----------------------|----|-----|----|
| Aug | 15 | Jan | 18 |
| Sept | 20 | Feb | 19 |
| Oct | 19 | Mar | 21 |
| Nov | 20 | Apr | 18 |
| Dec | 16 | May | 13 |
| | 90 | | 89 |

| Teacher Days by Month | | | |
|-----------------------|----|-----|----|
| Aug | 18 | Jan | 20 |
| Sept | 20 | Feb | 19 |
| Oct | 20 | Mar | 21 |
| Nov | 20 | Apr | 18 |
| Dec | 16 | May | 13 |

