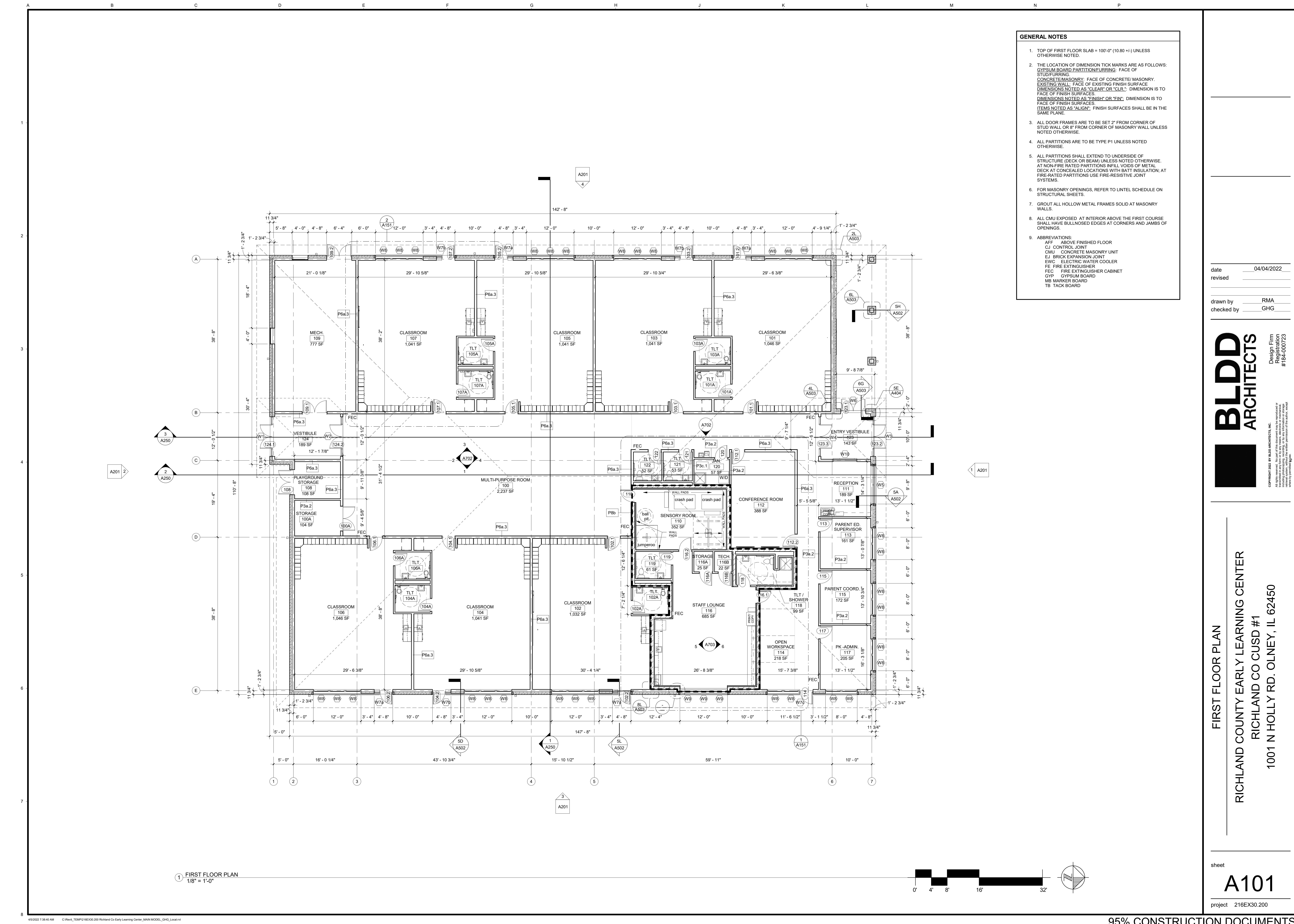


**Richland County Community Unit School District No.1
Board of Education**

**Special Meeting
Tuesday, April 5, 2022
Richland County High School
1200 E. Laurel St.
Olney, IL 62450
5:00 PM**

- I. Call to Order and Pledge of Allegiance
- II. Roll Call
- III. Recognition and Comments from Employees and Public
- IV. New Business
 - A. Review of PreK Center bid documents, updated budget, updated building design, and project timeline. 2
- V. Enter Executive Session
 - A. To Consider Information Regarding Appointment, Employment, Compensation, Discipline, Performance, or Dismissal of Individual Employees
- VI. Exit Executive Session
- VII. Resignation(s)
- VIII. Employment
 - A. Special Education Director
- IX. Adjournment



- GENERAL NOTES**
- TOP OF FIRST FLOOR SLAB = 100'-0" (10.80 +/-) UNLESS OTHERWISE NOTED.
 - THE LOCATION OF DIMENSION TICK MARKS ARE AS FOLLOWS:
 STUD/FURRING: FACE OF CONCRETE/MASONRY.
 CONCRETE/MASONRY: FACE OF CONCRETE/MASONRY.
 EXISTING WALL: FACE OF EXISTING FINISH SURFACE.
 DIMENSIONS NOTED AS "CLEAR" OR "CLR.": DIMENSION IS TO FACE OF FINISH SURFACES.
 DIMENSIONS NOTED AS "FINISH" OR "FIN.": DIMENSION IS TO FACE OF FINISH SURFACES.
 ITEMS NOTED AS "ALIGN": FINISH SURFACES SHALL BE IN THE SAME PLANE.
 - ALL DOOR FRAMES ARE TO BE SET 2" FROM CORNER OF STUD WALL OR 8" FROM CORNER OF MASONRY WALL UNLESS NOTED OTHERWISE.
 - ALL PARTITIONS ARE TO BE TYPE P1 UNLESS NOTED OTHERWISE.
 - ALL PARTITIONS SHALL EXTEND TO UNDERSIDE OF STRUCTURE (DECK OR BEAM) UNLESS NOTED OTHERWISE. AT NON-FIRE RATED PARTITIONS INFILL VOIDS OF METAL DECK AT CONCEALED LOCATIONS WITH BATT INSULATION. AT FIRE-RATED PARTITIONS USE FIRE-RESISTIVE JOINT SYSTEMS.
 - FOR MASONRY OPENINGS, REFER TO LINTEL SCHEDULE ON STRUCTURAL SHEETS.
 - GROUT ALL HOLLOW METAL FRAMES SOLID AT MASONRY WALLS.
 - ALL CMU EXPOSED AT INTERIOR ABOVE THE FIRST COURSE SHALL HAVE BULLNOSED EDGES AT CORNERS AND JAMBS OF OPENINGS.
 - ABBREVIATIONS:
 AFF ABOVE FINISHED FLOOR
 CJ CONTROL JOINT
 CMU CONCRETE MASONRY UNIT
 EJ BRICK EXPANSION JOINT
 EWC ELECTRIC WATER COOLER
 FE FIRE EXTINGUISHER
 FEC FIRE EXTINGUISHER CABINET
 GYP GYPSUM BOARD
 MB MARKER BOARD
 TB TACK BOARD

date 04/04/2022
 revised
 drawn by RMA
 checked by GHG

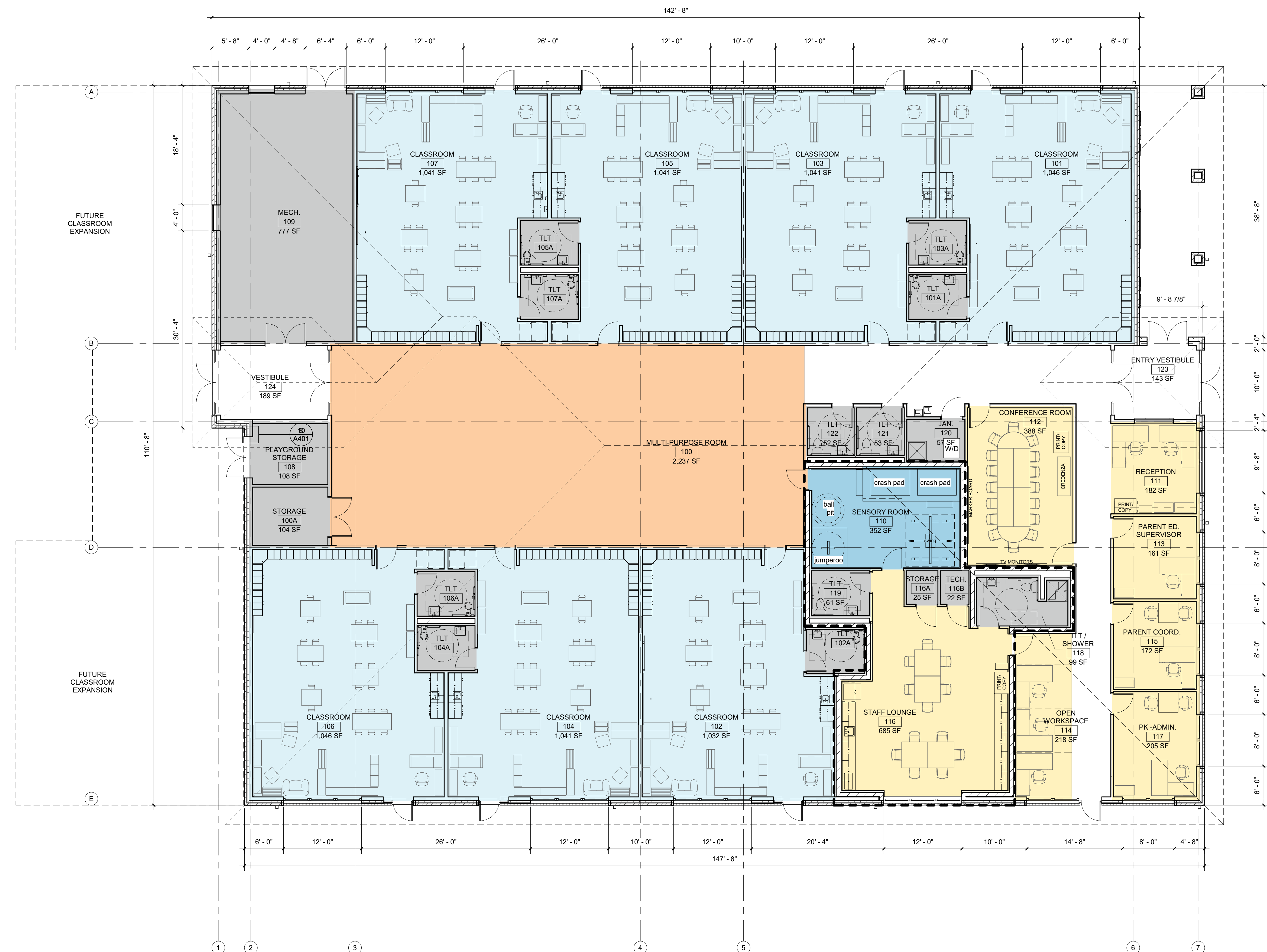
BLDD ARCHITECTS
 Design Firm
 Registration
 #184-00723

Copyright 2022 by BLDD ARCHITECTS, INC.
 All rights reserved. No part of this document may be reproduced or transmitted in any form or by any means, electronic, mechanical, photocopying, recording, or by any information storage and retrieval system, without the prior written permission of the author, except where so permitted by law.

FIRST FLOOR PLAN
 RICHLAND COUNTY EARLY LEARNING CENTER
 RICHLAND CO CUSD #1
 1001 N HOLLY RD. OLNEY, IL 62450

1 FIRST FLOOR PLAN
 1/8" = 1'-0"

sheet
A101
 project 216EX30.200



- GENERAL NOTES**
- TOP OF FIRST FLOOR SLAB = 100'-0" (10.80 +/-) UNLESS OTHERWISE NOTED.
 - THE LOCATION OF DIMENSION TICK MARKS ARE AS FOLLOWS:
 GYPSUM BOARD PARTITION/FURRING: FACE OF STUD/FURRING
 CONCRETE/MASONRY: FACE OF CONCRETE/MASONRY.
 EXISTING WALL: FACE OF EXISTING FINISH SURFACE.
 DIMENSIONS NOTED AS "CLEAR" OR "CLR.": DIMENSION IS TO FACE OF FINISH SURFACES.
 DIMENSIONS NOTED AS "FINISH" OR "FIN.": DIMENSION IS TO FACE OF FINISH SURFACES.
 ITEMS NOTED AS "ALIGN.": FINISH SURFACES SHALL BE IN THE SAME PLANE.
 - ALL DOOR FRAMES ARE TO BE SET 2" FROM CORNER OF STUD WALL OR 8" FROM CORNER OF MASONRY WALL UNLESS NOTED OTHERWISE.
 - ALL PARTITIONS ARE TO BE TYPE P1 UNLESS NOTED OTHERWISE.
 - ALL PARTITIONS SHALL EXTEND TO UNDERSIDE OF STRUCTURE (DECK OR BEAM) UNLESS NOTED OTHERWISE. AT NON-FIRE RATED PARTITIONS INFILL VOIDS OF METAL DECK AT CONCEALED LOCATIONS WITH BATT INSULATION. AT FIRE-RATED PARTITIONS USE FIRE-RESISTIVE JOINT SYSTEMS.
 - FOR MASONRY OPENINGS, REFER TO LINTEL SCHEDULE ON STRUCTURAL SHEETS.
 - GROUT ALL HOLLOW METAL FRAMES SOLID AT MASONRY WALLS.
 - ALL CMU EXPOSED AT INTERIOR ABOVE THE FIRST COURSE SHALL HAVE BULLNOSED EDGES AT CORNERS AND JAMBS OF OPENINGS.
 - ABBREVIATIONS:
 AFF ABOVE FINISHED FLOOR
 CJ CONTROL JOINT
 CMU CONCRETE MASONRY UNIT
 EJ BRICK EXPANSION JOINT
 EWC ELECTRIC WATER COOLER
 FE FIRE EXTINGUISHER
 FEC FIRE EXTINGUISHER CABINET
 GYP GYPSUM BOARD
 MB MARKER BOARD
 TB TACK BOARD

GROSS BUILDING SQUARE FOOTAGE:
16,200 SF

- Classroom
- Collaboration
- Assembly
- Administration
- Circulation
- Storage & Support

date 04/04/2022
 revised
 drawn by Author
 checked by Checker

BLDD ARCHITECTS
 Design Firm
 Registration
 #184-00723

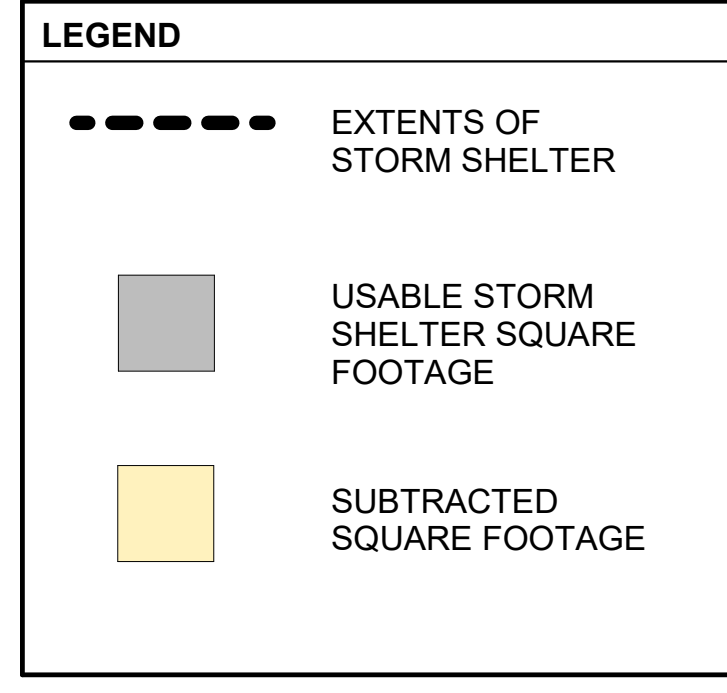
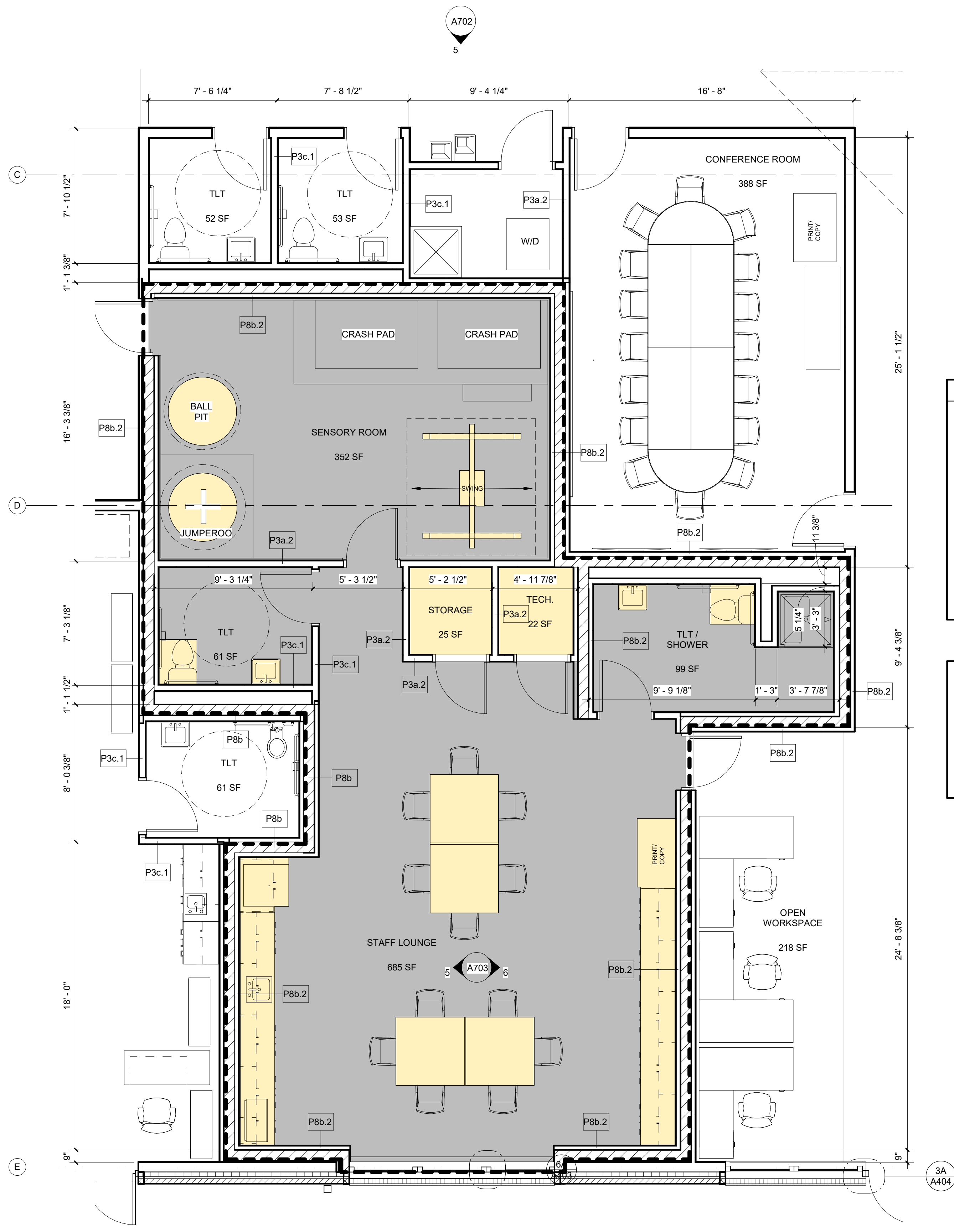
COPYRIGHT 2022 BY BLDD ARCHITECTS, INC.
 All rights reserved. No part of this document may be reproduced or transmitted in any form or by any means, including photocopying, recording, or by any information storage and retrieval system, without the written permission of the author, except where it is prohibited by law.

FIRST FLOOR PLAN - COLOR CODED
 RICHLAND COUNTY EARLY LEARNING CENTER
 RICHLAND CO CUSD #1
 1001 N HOLLY RD. OLNEY, IL 62450

sheet
A101A
 project 216EX30.200

1 FIRST FLOOR PLAN - COLOR CODED
 1/8" = 1'-0"

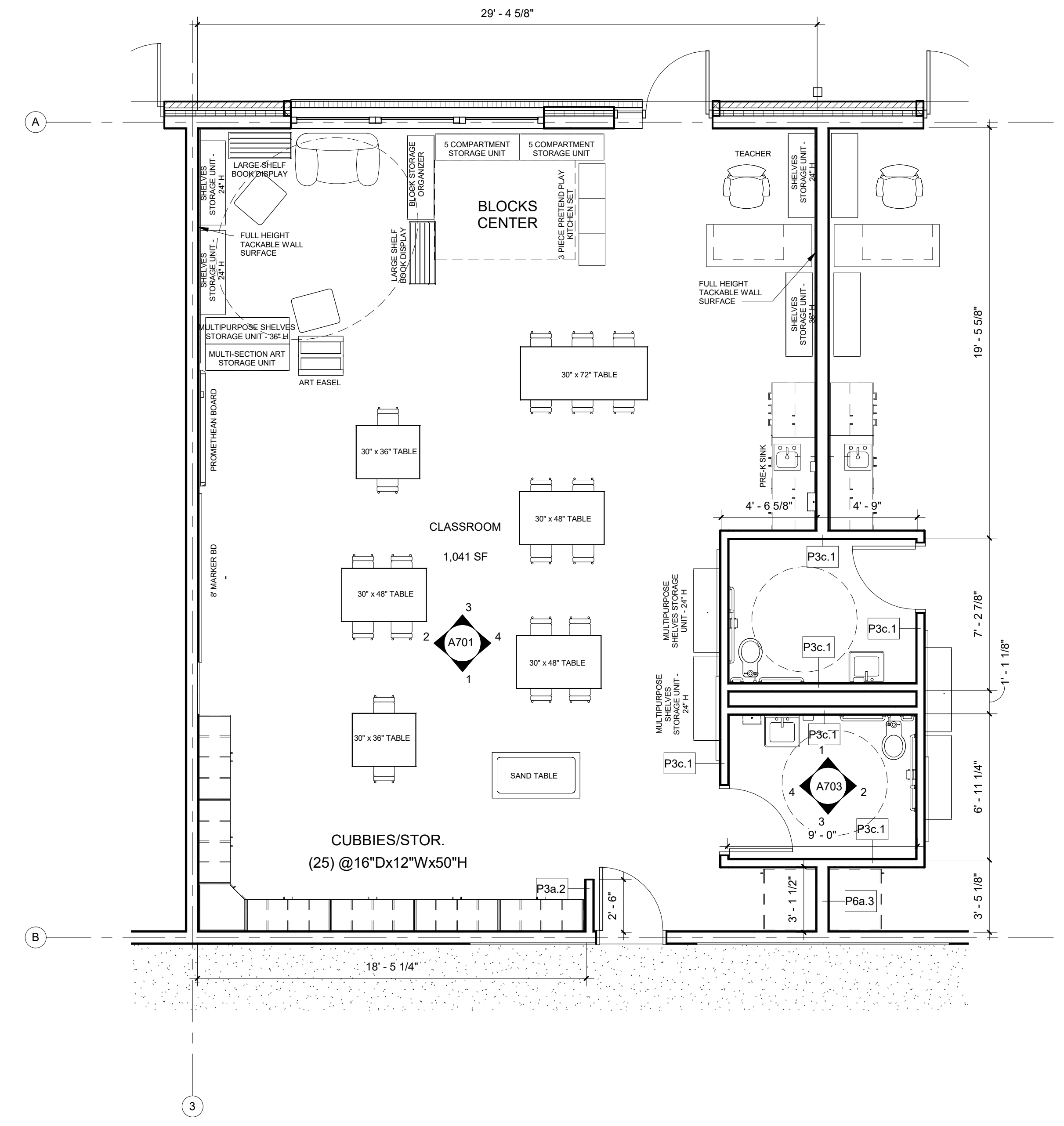
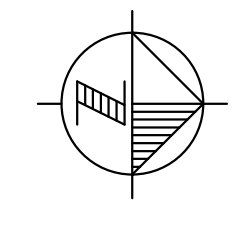
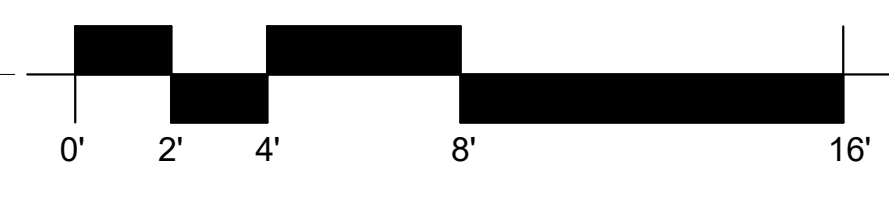




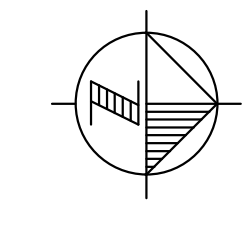
TOTAL NET SQUARE FOOTAGE: 1,252 SF

- 260 SUBTRACTED SF
- 992 USABLE STORM SHELTER SF
- 992 USABLE SF / 5 SF PER PERSON = 198 + 2 ADA = **200 OCCUPANTS**

1 ENLARGED FLOOR PLAN - STORM SHELTER
1/4" = 1'-0"



2 CLASSROOMS - ENLARGED FLOOR PLAN
1/4" = 1'-0"



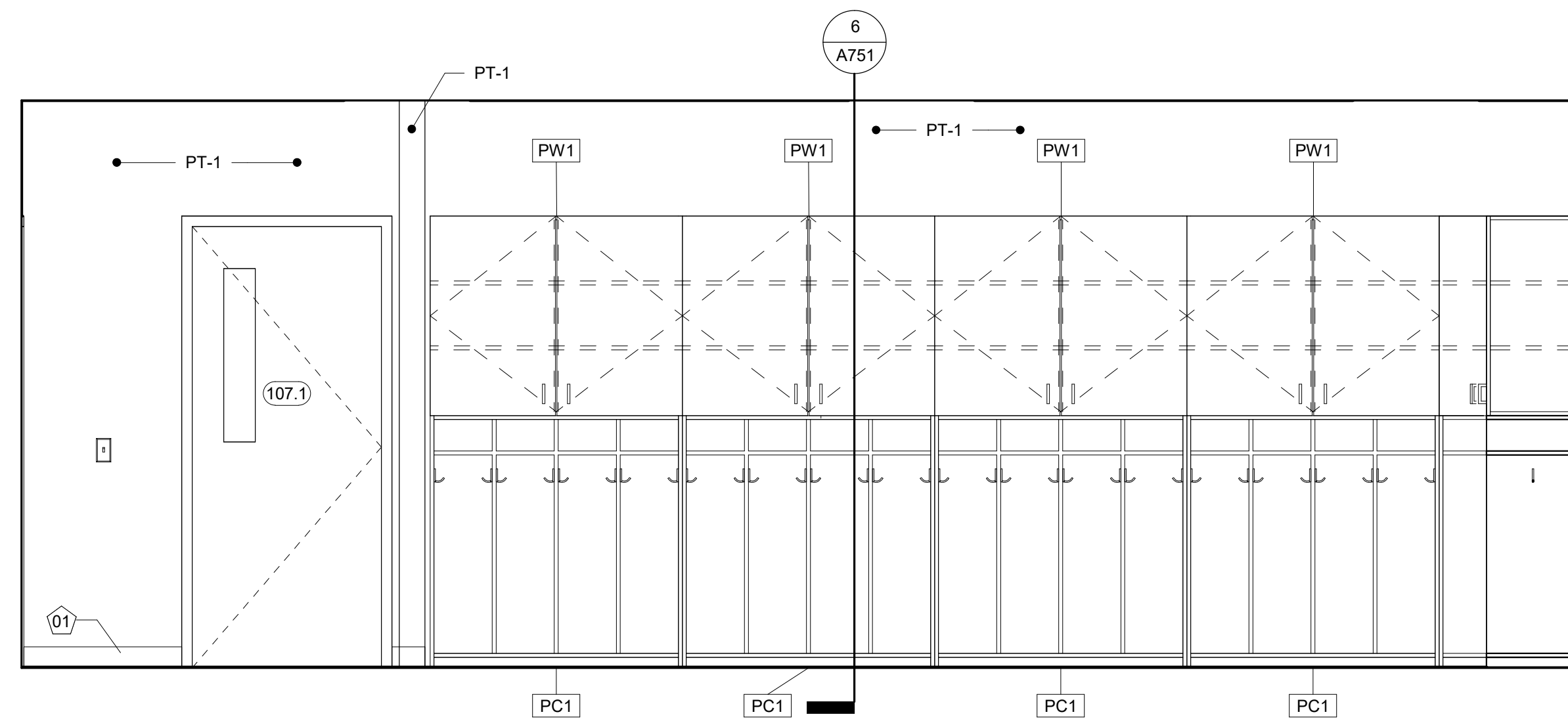
date 04/04/2022
revised
drawn by RMA
checked by GHG

BLDD ARCHITECTS
Design Firm
Registration
#184-00723

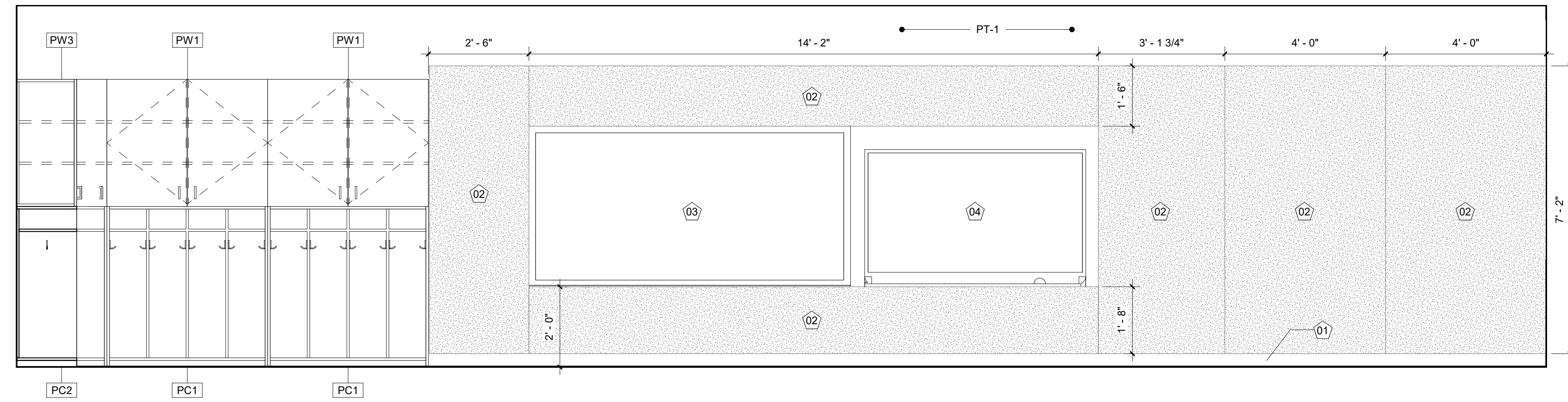
COPYRIGHT 2022 BY BLDD ARCHITECTS, INC.
All rights reserved. No part of this document may be reproduced or transmitted in any form or by any means, including photocopying, recording, or by any information storage and retrieval system, without written permission from the author, except where it is indicated otherwise.

ENLARGED FLOOR PLANS
RICHLAND COUNTY EARLY LEARNING CENTER
RICHLAND CO CUSD #1
1001 N HOLLY RD. OLNEY, IL 62450

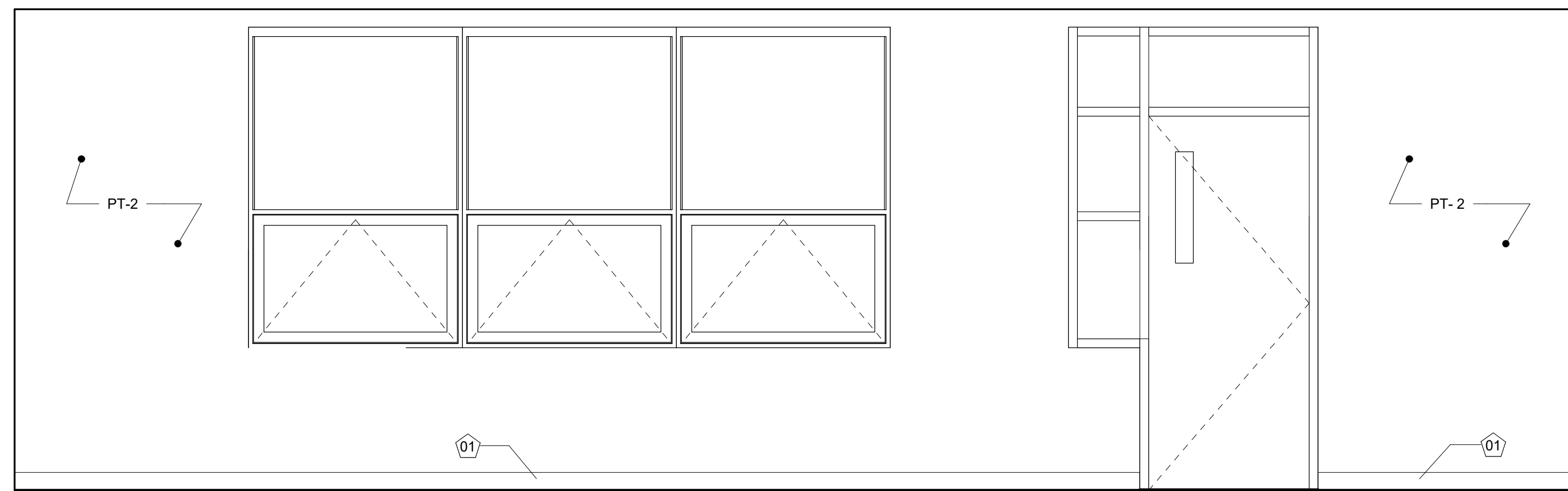
sheet
A151
project 216EX30.200



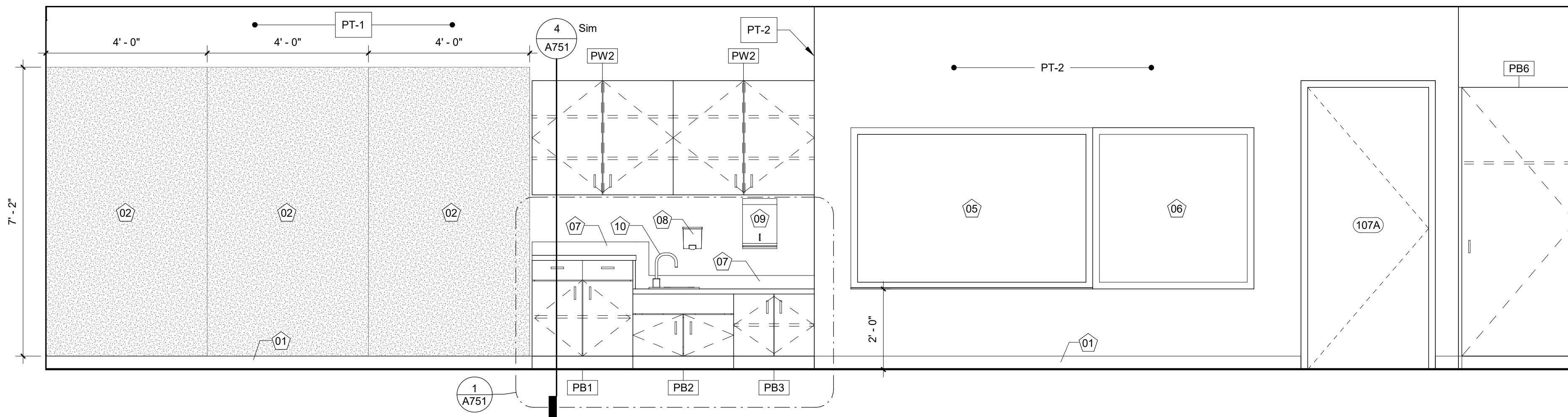
1 CLASSROOM ELEVATION 1
1/2" = 1'-0"



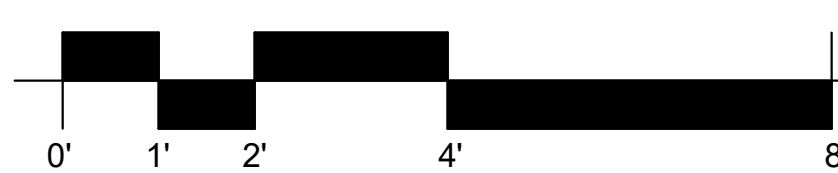
2 CLASSROOM ELEVATION 2
1/2" = 1'-0"



3 CLASSROOM ELEVATION 3
1/2" = 1'-0"



4 CLASSROOM ELEVATION 4
1/2" = 1'-0"



6 CLASSROOM 2

PLAM CASEWORK SCHEDULE					
KEY	DESCRIPTION	HEIGHT	WIDTH	DEPTH	Finish
PB1	PLAM BASE CABINET W/ (2) DOORS, (2) DRAWERS, (1) ADJUSTABLE SHELF, & (4) PULLS	32 1/2"	30"	24"	PLAM-1
PB2	PLAM SINK BASE CABINET W/ (2) DOORS, (2) PULLS	22 1/2"	30"	24"	PLAM-1
PB3	PLAM BASE CABINET W/ (2) DOORS, (1) ADJUSTABLE SHELF, & (2) PULLS	22 1/2"	24"	24"	PLAM-1
PB4	PLAM BASE CABINET W/ (2) DOORS, (2) DRAWERS, (1) ADJUSTABLE SHELF, & (4) PULLS	32 1/2"	36"	24"	PLAM-1
PB5	PLAM BASE CABINET W/ (1) DOOR, (1) DRAWER, (1) ADJUSTABLE SHELF, & (2) PULLS	32 1/2"	18"	24"	PLAM-1
PB6	PLAM WARDROBE CABINET W/ (1) DOOR, (1) ADJUSTABLE SHELF W/ COAT ROD, & (1) PULL - SCRIBE TO FIT OPENING	84"	34"	30"	PLAM-1
PB7	PLAM SINK APRON W/ REMOVABLE ACCESS PANEL	32 1/2"	36"	24"	PLAM-1
PC1	PLAM CUBBIES, (4) CUBBY SPACES, (8) COAT HOOKS, (4) SHELVES	48"	48"	18"	PLAM-1
PC2	PLAM CORNER CUBBY, (1) CUBBY SPACE, (2) COAT HOOKS, (1) SHELF	48"	27"	27"	PLAM-1
PW1	PLAM WALL CABINET W/ VERTICAL FACE FRAME, (2) DOORS, (2) ADJUSTABLE SHELVES, (2) PULLS	38"	48"	18"	PLAM-2
PW2	PLAM WALL CABINET W/ VERTICAL FACE FRAME, (2) DOORS, (2) ADJUSTABLE SHELVES, (2) PULLS	34"	42"	12"	PLAM-2
PW3	PLAM CORNER WALL CABINET W/ (1) DOOR, (2) ADJUSTABLE SHELVES, & (1) PULL	38"	27"	27"	PLAM-1
PW4	PLAM WALL CABINET W/ VERTICAL FACE FRAME, (1) DOOR, (2) ADJUSTABLE SHELVES, & (2) PULLS	34"	36"	12"	PLAM-1
PW5	PLAM WALL CABINET W/ (1) DOOR, (2) ADJUSTABLE SHELVES, & (1) PULL	34"	18"	12"	PLAM-1
PW6	PLAM WALL CABINET W/ VERTICAL FACE FRAME, (2) PULLS	15"	36"	24"	PLAM-1

CLASSROOM KEYED NOTES		
KEY	DESCRIPTION	FINISH
01	WALL BASE	RB-1
02	TACKABLE WALL SURFACE	TS-1
03	8'-0" X 4'-0" MARKER BOARD	
04	PROMETHEAN BOARD	
05	6'-0" X 4'-0" MARKER BOARD	
06	4'-0" X 4'-0" FRAMED TACK BOARD	TS-1
07	COUNTER TOP	PLAM-3
08	SOAP DISPENSER	
09	PAPER TOWEL DISPENSER	
10	SINK AND FAUCET	

date 04/04/2022
revised
drawn by RMA
checked by GHG

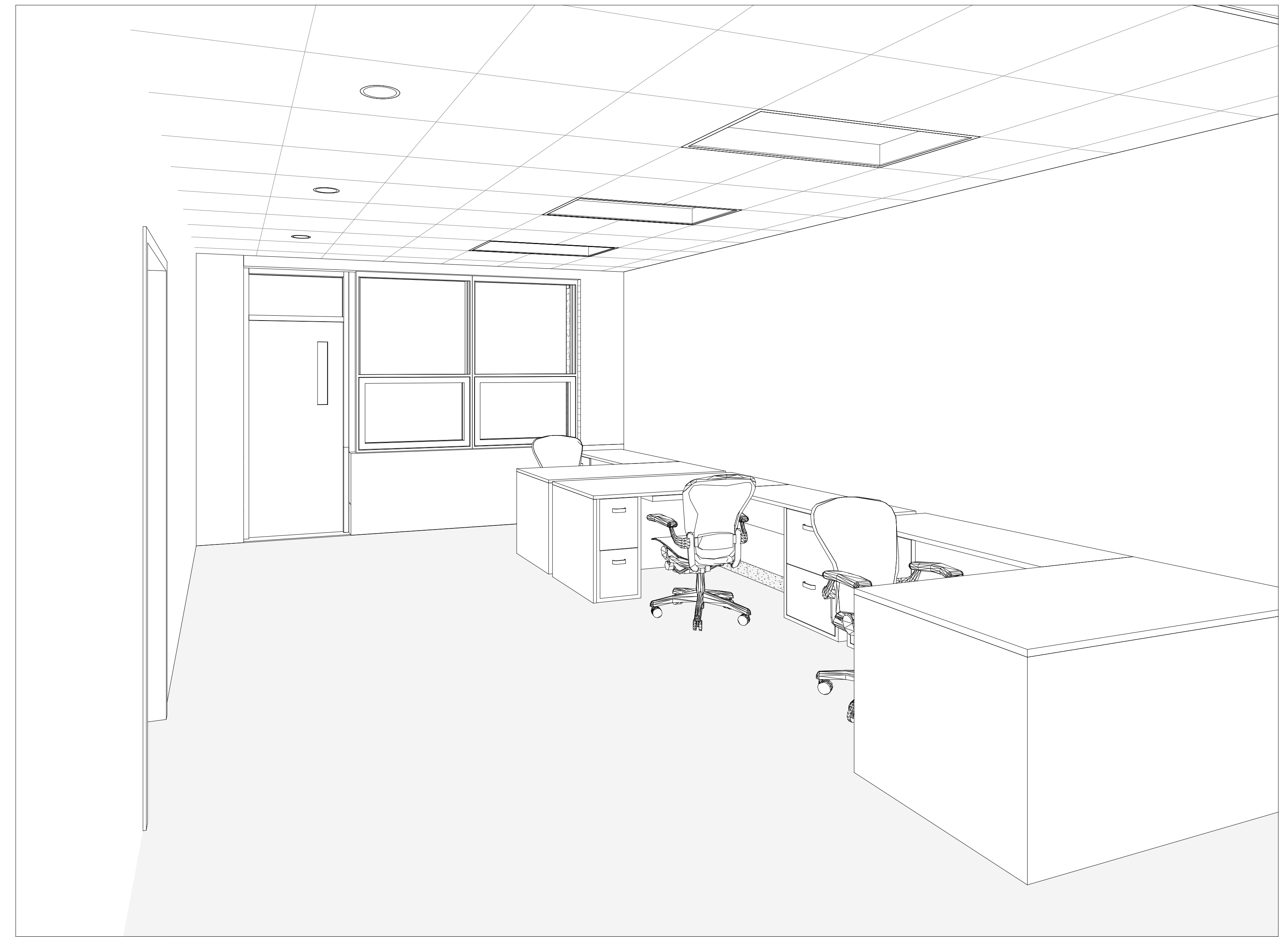


CLASSROOM ELEVATIONS AND PERSPECTIVES
RICHLAND COUNTY EARLY LEARNING CENTER
RICHLAND CO CUSD #1
1001 N HOLLY RD. OLNEY, IL 62450

sheet
A701
project 216EX30.200



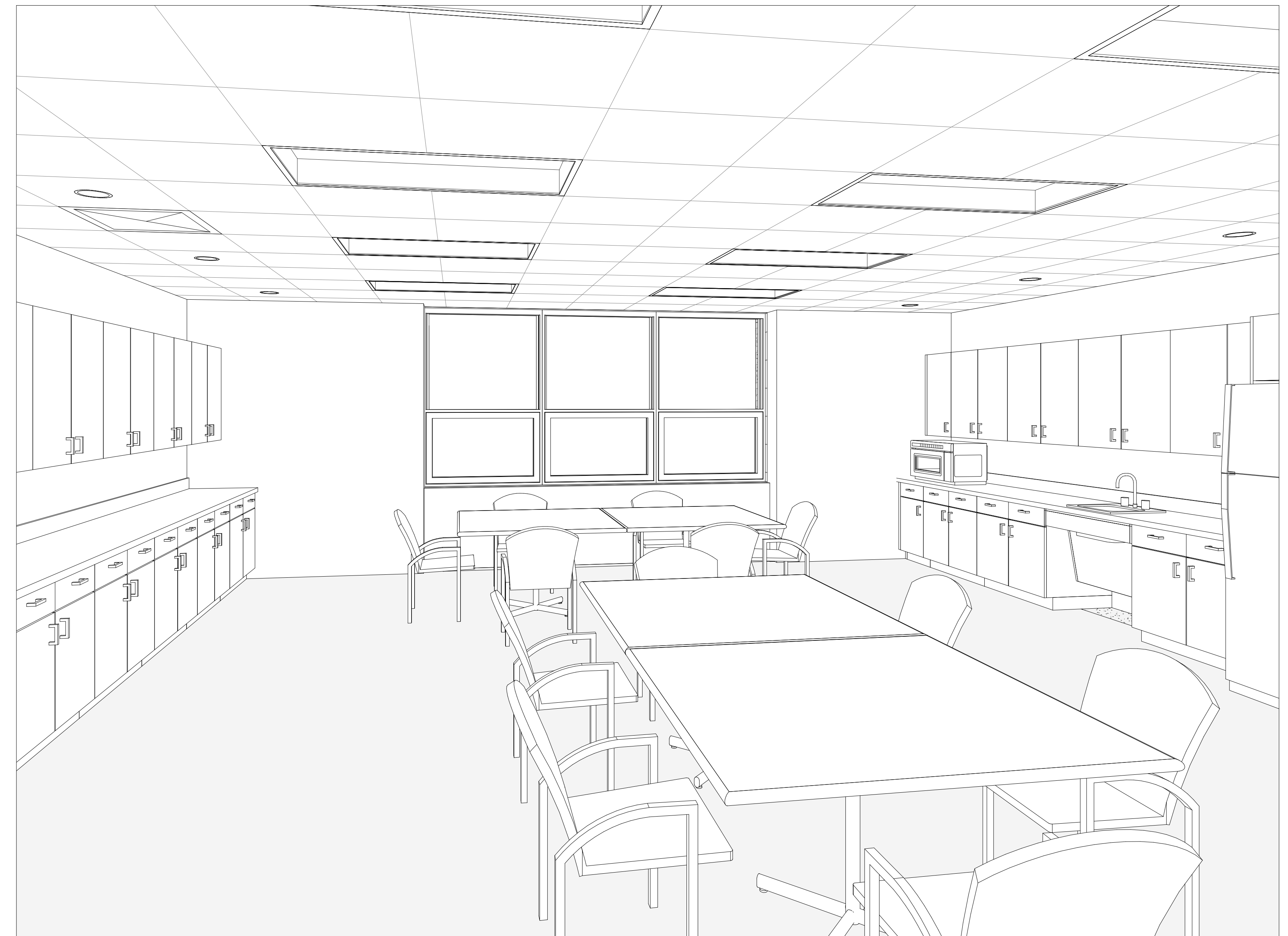
1 ADMINISTRATION CORRIDOR



2 OPEN WORKSPACE



4 RECEPTION



3 STAFF LOUNGE

date 04/04/2022
 revised
 drawn by Author
 checked by Checker

BLDD
 ARCHITECTS

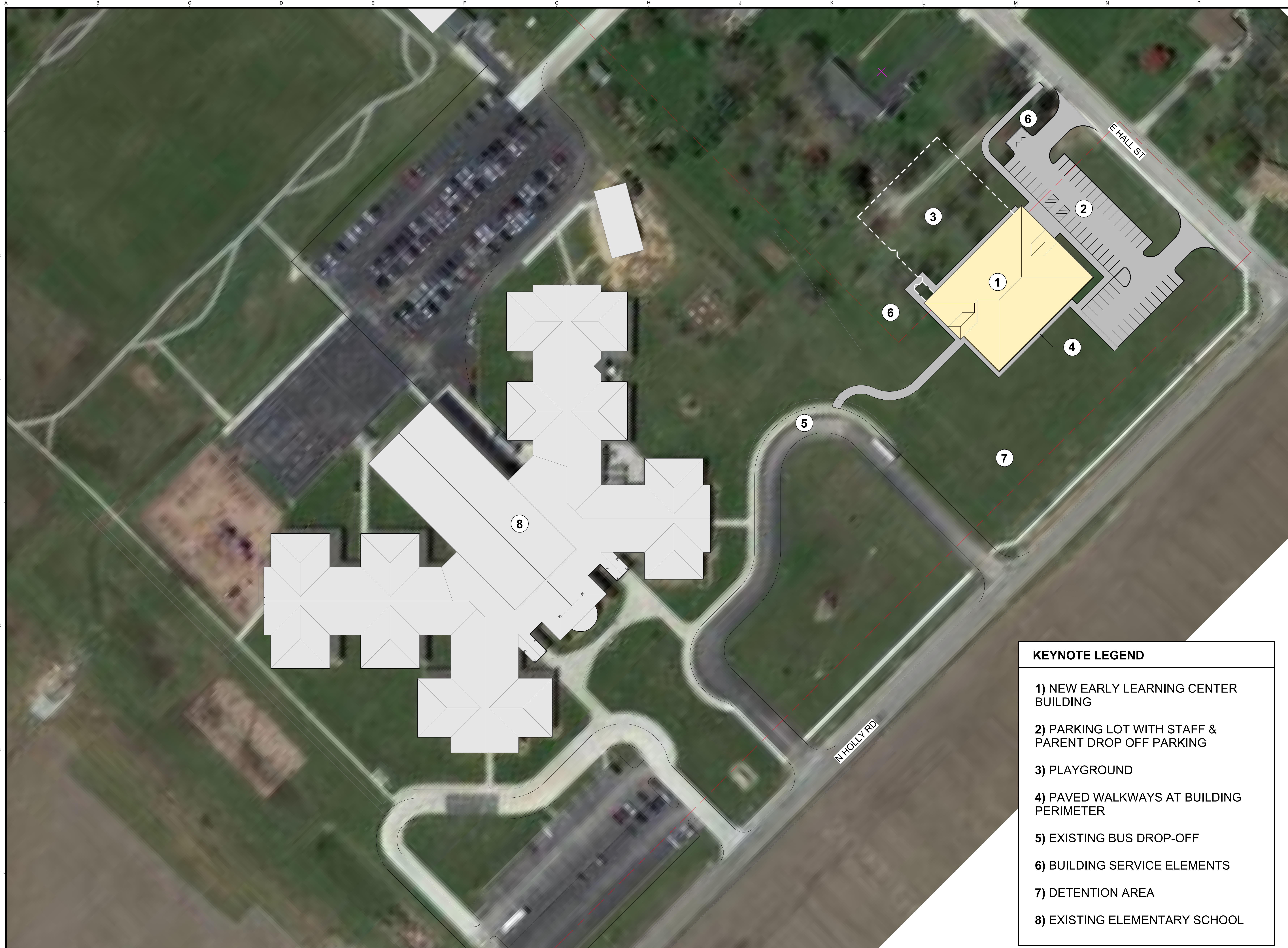
Design Firm
 Registration
 #184-00723

COPYRIGHT 2022 BY BLDD ARCHITECTS, INC.
 All rights reserved. No part of this document may be reproduced or transmitted in any form or by any means, including electronic, mechanical, photocopying, recording, or by any information storage and retrieval system, without the written permission of the author, except where it is prohibited by law.

PERSPECTIVE VIEWS

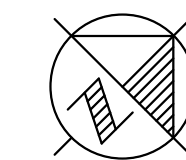
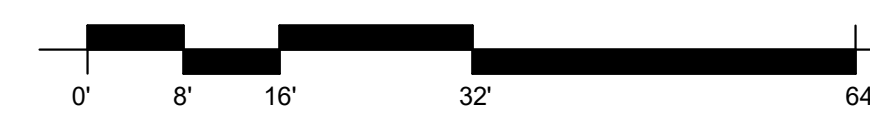
RICHLAND COUNTY EARLY LEARNING CENTER
 RICHLAND CO CUSD #1
 1001 N HOLLY RD. OLNEY, IL 62450

sheet
A753
 project 216EX30.200



KEYNOTE LEGEND	
1)	NEW EARLY LEARNING CENTER BUILDING
2)	PARKING LOT WITH STAFF & PARENT DROP OFF PARKING
3)	PLAYGROUND
4)	PAVED WALKWAYS AT BUILDING PERIMETER
5)	EXISTING BUS DROP-OFF
6)	BUILDING SERVICE ELEMENTS
7)	DETENTION AREA
8)	EXISTING ELEMENTARY SCHOOL

1 SITE PLAN - AERIAL IMAGE
1" = 40'-0"



date 04/04/2022
revised
drawn by Author
checked by Checker

BLDD ARCHITECTS
Copyright 2022 by BLDD Architects, Inc.
 All rights reserved. No part of this document may be reproduced or transmitted in any form or by any means, including electronic, mechanical, photocopying, recording, or by any information storage and retrieval system, without the prior written permission of the author, except where so permitted in writing.

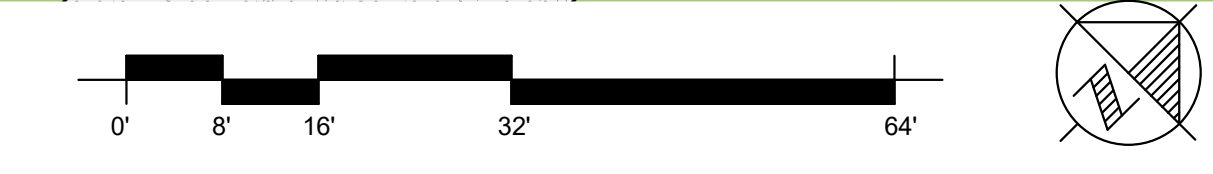
Design Firm
 Registration
 #184-00723

SITE PLAN
 RICHLAND COUNTY EARLY LEARNING CENTER
 RICHLAND CO CUSD #1
 1001 N HOLLY RD. OLNEY, IL 62450

sheet
AS101
 project 216EX30.200



1 ENLARGED SITE PLAN
 1/16" = 1'-0"



date 04/04/2022
 revised
 drawn by Author
 checked by Checker

BLDD ARCHITECTS

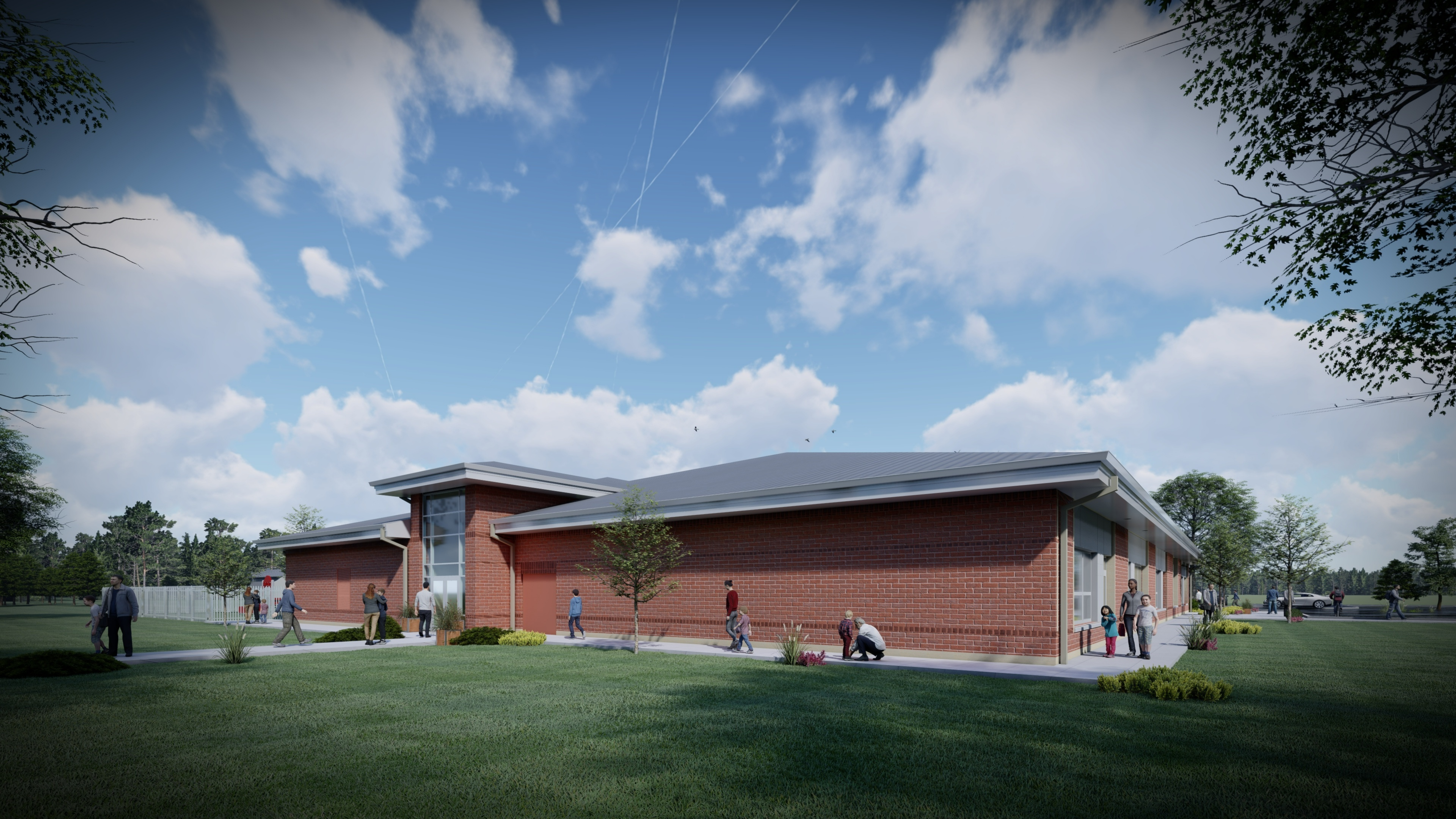
Design Firm
 Registration
 #184-00723

COPYRIGHT 2022 BY BLDD ARCHITECTS, INC.
 All rights reserved. No part of this document may be reproduced or transmitted in any form or by any means, including electronic, mechanical, photocopying, recording, or by any information storage and retrieval system, without the prior written permission of the author, except where so permitted in writing.

ENLARGED SITE PLAN
 RICHLAND COUNTY EARLY LEARNING CENTER
 RICHLAND CO CUSD #1
 1001 N HOLLY RD. OLNEY, IL 62450

sheet
AS102
 project 216EX30.200







TIGER TALES CREATE YOUR STORY

APPLY

N

Pre-K Center Funding		
Total Estimated Project Cost	\$6,368,304	
Available Funds		
ESSER II Funds	\$430,000	Architectural Services/Site Survey
ESSER III Funds	\$4,712,325	Construction Costs
Capital Projects Fund Balance (2/28/22)	\$260,258	
	\$5,402,583	
Budget Shortfall	-\$965,721	
Estimated 1% Sales Tax Proceeds		
March 2022-June 2022	\$520,000	
March 2023-June 2023	\$520,000	
	\$1,040,000	

Richland County School District
Richland County Elem. School Early Learning Center
 Scope: Construct new Early Learning Center at Richland County Elementary School.

Date of Probable Project Cost Estimate: **January 6, 2022**
 Project Phase: **Preconstruction**
 Budget Type: **SD Budget**
 Start Construction:
 Construction Duration: **12 Months**
 Project Size **16,200 G.S.F.**
\$393.11

A. Indirect Construction Cost Estimate

1. Administration Cost		7,500
a. Printing	0	n/a
b. Advertising	0	n/a
c. Land Cost	0	n/a
d. Permit	0	n/a
e. Bond Cost	0	0.00%
f. Builder's Risk	7,500	Estimated
g. Other	0	n/a

2. Equipment & Furniture 100,000

a. Furniture	100,000	n/a
b. Equipment	0	Inc Above
c. Moving Expense	0	Inc Above
d. Misc.	n/a	n/a

3. Technology 100,000

a. Technology Costs	100,000	Estimated
b. Phone & Security	0	Inc Above
c. Computers	0	Inc Above
c. Other	n/a	n/a

4. Architectural / Engineering Fees 461,803

a. Basic Services	461,803	BLDD
b. Civil	0	Inc Above
c. Programming	0	Inc Above
d. Code Required Inspections	0	Inc Above
e. Reimbursable	0	Inc Above
e. Other	0	n/a

5. Services 40,000

a. Utility Taps	15,000	n/a
b. Temporary Utilities	25,000	n/a
c.		
d.		
e.		

6. Testing & Investigation 25,000

a. Survey	0	n/a
b. Geotech Report	0	ARCH
c. Environmental	0	n/a
d. Material Testing	25,000	Estimated
e. Abatement	0	n/a
f. Other	0	n/a

7. Estimate of Indirect Costs
\$734,303
B. Direct Construction Cost Estimate

1. Work Divisions	\$286.75	\$4,645,289
a. DIV 1 - General Requirements		\$63,890
b. DIV 3 - Concrete		\$275,000
c. DIV 4 - Masonry		\$203,721
d. DIV 5 - Structural Steel		\$8,925
e. DIV 6 - Carpentry		\$117,427
f. DIV 7 - Moisture & Thermal Protection		\$740,000
g. DIV 8 - Openings		\$219,395
h. DIV 9 - Finishes		\$1,030,252
i. DIV 10 - Specialties		\$72,969
j. DIV 11 - Equipment		\$0
k. DIV 12 - Furnishings		\$13,035
l. DIV 13 - Special Equipment		\$0
m. DIV 14 - Conveying Equipment		\$0
n. DIV 21 - Fire Suppression		\$60,000
o. DIV 22 - Plumbing		\$165,000
p. DIV 23 - Mechanical		\$475,000
q. DIV 27-28 - Electrical, Comm., ESS, FA		\$275,000
r. DIV 32 - Site Development		\$925,675
s.		

2. Contractor Bonds \$34,840

a. Bonds	0.75%	\$34,840
----------	-------	----------

3. Contractor Insurance \$46,453

a. Insurance	1.00%	\$46,453
--------------	-------	----------

4. Construction Management \$659,420

a. Pre-Construction Services		\$38,000
b. CM General Conditions		\$410,000
c. CM Fees	3.50%	\$174,110
d. CM Insurance	0.75%	\$37,309

5. Sub-Total Estimate of Direct Costs \$5,386,001
\$332.47
6. Contingency \$248,000

a. Scope & Design	3.0%	\$40,000
b. Construction	3.0%	\$128,000
c. Market & Escalation	2.0%	\$80,000

7. Estimate of Direct Costs
\$5,634,001
ESTIMATED TOTAL PROJECT COST
(Direct and Indirect Estimated Cost)
\$6,368,304