

Agenda of Regular Meeting

The Board of Education Waverly Community Schools

A Regular Meeting of the Board of Education of Waverly Community Schools will be held June 16, 2025, beginning at 6:00 PM in the Board Room, 515 Snow Road, Lansing, MI 48917.

The subjects to be discussed or considered or upon which any formal action may be taken are as listed below. Items do not have to be taken in the order shown on this meeting notice.

Unless removed from the consent agenda, items identified within the consent agenda will be acted on at one time.

- I. Call to Order and Pledge to the Flag - President Alicia Guevara

- II. Special Presentation
Retirement Celebration

- III. Correspondence

- IV. Public Comment for Specific Agenda Items Only
Per Board of Education Policy 167.3, each statement made by a participant shall be limited to four (4) minutes duration. If an interpreter is used, participants will be limited to eight (8) minutes.

- V. Board Member Comment

- VI. Approval of Agenda and Acceptance of all Reports into Discussion
Recommendation: To request a motion to approve the June 16, 2025 agenda as presented and accept all reports into discussion.

- VII. Approval of Consent Agenda
Items listed below may be approved with one motion unless a board

member requests that an item or items be removed for a separate action.

Special Meeting Minutes - Student Discipline Hearing 5-7-25
Special Meeting Closed Session Minutes - Student Discipline Hearing 5-7-25
Regular Meeting Minutes - 5-19-25
Closed Session Meeting Minutes - 5-19-25
Special Meeting Minutes - Superintendent Search Profile - 5-22-25
Report #24- 64, HR Personnel Report
Report #24-65, Finance Report

Recommendation: To request a motion to approve the consent agenda as presented.

VIII. Committee Meetings

Odd Months - September, November, January, March, May
Finance & Facilities
Teaching & Learning

Even Months - October, December, February, April, June
Advocacy & Outreach
Special Education

IX. Presentation of Reports

A. For Action Report #24-66, 2025-26 Budget Resolutions 25

Recommendation: To approve the 2025-26 General Fund Resolution, the 2025-26 Debt Retirement Fund Resolution, the 2025-26 Special Revenue Funds Resolution and the 2025-26 Sinking Fund Resolution as presented.

B. For Action Report #24-67, Certification of Summer Tax Levy 34

Recommendation: To adopt the proposed summer tax levy for the City of Lansing, Delta Township, and Lansing Township as presented.

C. For Action Report #24-68 - Personnel & Policy - Second Reading - Spring 2025 Updates - Volume 39.2 41

Recommendation: To adopt the proposed policy updates Spring 2025 Updates - Volume 39.2

- D. For Action Report #24-69, Acceptance of Cash Donation 42

Recommendation: To accept the cash donation from The Gregory Hugh Montgomery Jr. Foundation to be used by Winans Elementary for the equipping of the Junior Warriors Calming Room.

- E. For Action Report #24-70, Resolution to Call for a Special Election 43

Recommendation: To approve the resolution to call for a special election to be held on November 4, 2025 to renew the existing sinking fund for construction or repair of school buildings an all other purposes authorized by law.

- F. For Action Report #24-71, Ratification of Master Agreement Teamsters Local 214 (Bus Drivers) 48

Recommendation: To approve the tentative agreement between the Teamsters Local Union 214 and the Board of Education as presented.

- G. For Action Report #24-72, ELA Curriculum Adoption 49

Recommendation: To approve the ELA curriculum and resources for grades

- H. For Action Report #24-73, Social Studies Curriculum Adoption 50

Recommendation: To approve the Social Studies curriculum for grades.

- I. For Action Report #24-74, Michigan High School Athletic Association 2025-26 Membership 51

Recommendation: To approve the Michigan High School Athletic Association 2025-26 Membership Resolution.

X. Superintendent's Report

XI. Public Comment for District Items
Per Board of Education Policy 167.3, each statement made by a participant shall be limited to four (4) minutes duration. If an interpreter is used, participants will be limited to eight (8) minutes.

XII. Other Board Business

XIII. Adjournment

Minutes of Special Meeting (Superintendent Search Firm Contract and Student Discipline)

The Board of Trustees Waverly Community Schools

A Special meeting of the Waverly Community Schools Board of Education was held Wednesday, May 7, 2025 at the Administration Building, located at 515 Snow Rd., Lansing, MI 48917.

Members Present: Deborah Lopez
 Cathy Pike
 Vince Perkins
 Ty Liggons
 Emily Lenneman

Members Absent: Alicia Guevara
 Andrea Torres

Staff Present: Kelly Blake, Superintendent
 Shawn Lewis, Director of School Culture
 Anthony Terranova, High School Principal
 Christopher Huff, Director of Teaching & Learning
 Micky Savage, Director of Human Resources
 Evan Nuffer, Director of Finance & Facilities

Others Present: Student and Guardian(s)

The meeting was called to order at 4:00 pm by Vice President Lopez.

Micky Savage, HR Director, reviewed the proposed Michigan Leadership Academy Superintendent Search contract.

A motion was presented by Member Perkins and supported by Member Pike to approve the Superintendent Search Firm contract as presented.

Motion PASSED

Vote: Ayes – 5; Nays – 0; Absent – 2 – Members Guevara and Member Torres

All in attendance introduced themselves.

Vice President Lopez asked if the guardian of Student A wanted a closed or opened session for the purpose of a student discipline hearing. Parent A requested an open session.

Shawn Lewis reviewed the charges against Student A, as well as the state guidelines in student discipline and proposed student discipline resolution.

Principal Tony Terranova reviewed the events of the day and presented all evidence.

The Board of Education members asked Student A questions regarding the charges, and other clarifying questions.

The parents of Student A gave a statement.

A high school student gave a statement.

A Waverly High School teacher gave a statement.

A motion was presented by Member Perkins and supported by Member Liggons to meet in closed session under section 8(e) of the Open Meetings Act, for the purpose of a student disciplinary hearing.

Roll Call Vote: Cathy Pike – Yes
Vince Perkins – Yes
Ty Liggons – Yes
Emily Lenneman- Yes
Debbie Lopez – Yes

Motion PASSED

Vote: Ayes – 5; Nays – 0; Absent – 2 – Members Guevara and Torres

At 4:40 the Board entered into deliberation with the Student, family, Shawn Lewis, and Tony Terranova exiting the meeting.

The Board returned to open session at 5:06 pm.

Superintendent Blake read the proposed Student Discipline Board Resolution for Student A.

A motion was presented by Member Perkins and supported by Member Liggons to approve the Board Resolution for Student Discipline for Student A.

Roll Call Vote: Cathy Pike – Yes
Vince Perkins – Yes

Ty Liggons – Yes
Emily Lenneman- Yes
Debbie Lopez – Yes

Motion PASSED

**Vote: Ayes – 5; Nays – 0; Absent – 2 – Members Guevara and
Torres**

The meeting adjourned 5:15 pm.

Respectfully submitted,

Vincent Perkins, Secretary
aml

Minutes of Regular Meeting

The Board of Trustees Waverly Community Schools

Opening of Meeting

The regular monthly meeting of the Waverly Community Schools Board of Education was held on Monday, May 19, 2025 in the Waverly Board of Education Meeting Room, located at 515 Snow Rd., Lansing, MI 48917. President Guevara called the meeting to order at 6:00 PM. The pledge to the flag was led by Student Representative Wallace Malone.

Members Present: Alicia Guevara
 Deborah Lopez
 Vince Perkins
 Cathy Pike
 Ty Liggons
 Emily Lenneman
 Andrea Torres
 Student Representative Wallace Malone

Members Absent: None

Staff Present: Kelly Blake, Superintendent
 Evan Nuffer, Director of Finance & Facilities
 Micky Savage, Director of Human Resources
 Shawn Lewis, Director of School Culture
 Chris Huff, Director of Teaching & Learning
 Jon Harpst, Director of Technology
 Tony Terranova, High School Principal
 Jekeia Murphy, High School Assistant Principal
 Becky Hager, Elmwood Principal
 Doreatha Rusher, Elmwood Assistant Principal
 Bernard Colton, Middle School Principal
 Jeremiah Baynes, Middle School Assistant Principal
 Colin Christopher, Middle School Dean of Students
 Contisha Morgan, Middle School Teacher
 Waverly Middle School Students

Special Presentation:

Superintendent Kelly Blake presented Waverly Food Service Director, Linda Vainner with a Certificate of Appreciation to Michigan's Children with the National School Lunch Program from the Michigan Department of Education.

Mrs. Vainner has been part of Food Service in the school systems for 33 years and Waverly is fortunate to have you as part of our team.

Middle School Instructional Highlights

Middle School administrators Bernard Colton, Jeremiah Baynes, Colin Christopher, staff Contisha Morgan and students Marcus & Joceln presented an instructional review, including:

- Safe and caring inclusion environment for all
- Strong fluid systems
- Strong communication teams/leadership
- Student engagement
- Positive behavior supports/incentive programs/student celebrations
- Great Instruction review

High School Instructional Highlights

High School administrators, Tony Terranova and Jekeia Murphy presented an instructional reviews, including:

- Safe, caring and inclusive environments
- Building vision aligns with district vision
- Rigorous curriculum
- Job shadow with local businesses/recruitment of our students/Shark Tank competition/job fair
- Rotary Club/Delta Township Rotary
- Unified Champion School
- High School new safety entrance now in use
- Restorative Justice program

Correspondence:

None

Public Comment for Agenda Items:

None

Board Member Comment:

Member Lenneman

- Great instructional highlights from the Middle School and High School
- Congratulations to all Waverly teachers who have been honored this year.

Member Liggons:

- Thanks for the instructional highlights.
- Congratulations to Student Representative, Wallace Malone, on graduating on Saturday, May 31, 2025.
- The Middle School art show was impressive.

Member Perkins:

- Thank you for the instructional highlights presentations.
- Congratulations to Linda Vainner on her award from MDE.
- Congratulation to Wallace Malone on graduating from high school this year.

Member Pike:

- The High School play was great.
- Attended the orchestra concert along with the regular band. A special acknowledgement to Cameron Murray for orchestrating this event.
- Requested upcoming important dates on the main page of the district website.

Member Torres:

- Impressive instructional highlight presentation from the Middle School and High School.
- Congratulations to Wallace Malone

Student Representative Wallace Malone:

- Thank you for being able to represent students at the regular board meetings.
- Congratulations to Superintendent Blake on her upcoming retirement.

Member Guevara:

- Thank you for the detailed instructional highlight presentations from the Middle School and High School.
- Thank you to Wallace Malone for his participation as Student Representative in the 2024-25 school year.

Approval Agenda and Accept all Reports into Discussion

A motion was presented by Member Pike and supported by Member Lenneman to approve the consent agenda as presented.

Motion PASSED

Vote: Ayes – 7 ; Nays – 0; Absent – 0

Approval Consent Agenda Items

A motion was presented by Member Liggons and supported by Member Torres to approve the consent agenda as presented.

Motion PASSED

Vote: Ayes – 7 ; Nays – 0; Absent – 0

Committee Meetings

Advocacy & Outreach – Member Liggons reviewed the April 2025 Advocacy & Outreach meeting. The Committee:

- Finalized their Mission Statement
- Discussed livestreaming the Board Meetings
- Board Member(s) always present at Superintendent/Community Meetings
- Need to be active with the legislation

Special Education – Member Perkins reviewed the April 2025 Special Education meeting. The Committee:

- Planned topics for the upcoming school year.
- The size of the Waverly Community Schools Special Education program

For Action – Report #24-63, Ingham ISD Board of Education Candidate/Election Designation Resolution.

A motion was presented by Member Perkins and supported by Member Pike, to appoint Ty Liggons as Waverly BOE representative and Member Lopez as alternate to vote for Erin Schor and Michael Flowers for the open 2-year terms and Joel Gerring to fill the partial open term.

Motion PASSED

Vote: Ayes – 7 ; Nays – 0; Absent – 0

Personnel & Policy

Superintendent Blake reviewed the Neola Spring 2025 Policy Updates from Volume 39.2. These policies will be brought to action and adoption at the June 16, 2025 regular board meeting.

Teaching & Learning

Director of Teaching & Learning, Chris Huff, reviewed the proposed E curriculum for ELA and Social Studies and answered all questions the board asked. This item will be brought for action and adoption at the June 16, 2025 regular meeting.

Superintendent's Report:

Superintendent Blake reported:

- Chick-Fil-A donated a gift card to all Waverly Staff & BOE Members for Educator Appreciation Week.
- Memorial Day is May 26th
- May 29th is Seniors Honors Night
- May 31st is Graduation at the Breslin Center

Public Comment – Open Comment for District Issues

None

A motion was presented by Member Perkins and supported by Member Lopez to enter into closed session to discuss contract handbook review

Roll Call Vote: Member Torres – yes
 Member Lenneman – yes
 Member Pike – yes
 Member Lopez - yes
 Member Perkins – yes
 Member Liggons - yes
 Member Guevara - yes

Motion PASSED - 7 - Yes, 0 - Nay

The Board adjourned to closed session at 8:07 pm.
The Board returned to open session at 8:29 pm.

The meeting adjourned at 8:32 pm.

Respectfully submitted,

Vince Perkins, Secretary
aml

Minutes of Special Meeting – Superintendent Search Candidate Profile

The Board of Trustees Waverly Community Schools

Opening of Meeting

A Special session of the Waverly Community Schools Board of Education was held Thursday, May 22, 2025. President Guevara called the meeting to order at 4:15 pm

Members Present: Alicia Guevara
 Cathy Pike
 Debbie Lopez
 Ty Liggons

Members Absent: Andrea Torres
 Emily Lenneman
 Vince Perkins

Staff Present: Micky Savage, Director of Human Resources

The Board and Michigan Leadership Institute discussed and developed a Superintendent profile and finalized the search timeline.

The board adjourned the meeting at 7:30 pm.

Respectfully submitted,

Cathy Pike, Treasurer
aml

WAVERLY COMMUNITY SCHOOLS
BOARD OF EDUCATION
REGULAR MEETING
June 16, 2025

Report #24-64

Subject: Personnel Report
All individuals listed on this report have completed the required background check

A. Employment – Certified

<u>Name</u>	<u>Position</u>	<u>Building</u>	<u>Salary</u>	<u>Effective</u>
Christina Lehman	Ele Pre-K Principal	Colt ECEC	\$89,319	7/23/2025

B. Employment – Non-Certified

<u>Name</u>	<u>Position</u>	<u>Building</u>	<u>Salary</u>	<u>Effective</u>
Greg Robinson	Class C 2 nd Shift Custodian	High School	\$16.60/hr	5/19/2025
John Woodworth	Class C 2 nd Shift Custodian	Middle School	\$16.60/hr	5/28/2025

C. Resignation – Certified

<u>Name</u>	<u>Position</u>	<u>Building</u>	<u>Effective</u>
Sarah Slovinski	2 nd Grade Teacher	Elmwood Elementary	6/6/2025
Virginia Murphy	Math Teacher	Middle School	6/6/2025
Melissa Hall	English Teacher	Middle School	6/6/2025
Kristine Kelly	Special Ed Teacher	Middle School	6/6/2025
Nicole Haney	Instructional Coach	Elmwood Elementary	6/6/2025
Rebecca Eyestone-Malbouef	Science Teacher	Middle School	6/6/2025
Stephanie Brokstad-Franks	Counselor	High School	6/6/2025
Erin Jimmerson	1 st Grade Teacher	Elmwood Elementary	6/6/2025
Jeremy Tuller	Spec Education Teacher	East Intermediate	6/6/2025

D. Resignation – Non-Certified

<u>Name</u>	<u>Position</u>	<u>Building</u>	<u>Effective</u>
DeVonn Rutledge	Class C Custodian	Middle School	5/13/2025
Andrew Garske	GSRP Para Educator	Colt ECEC	5/30/2025

E. Staff Transfer

<u>Name</u>	<u>From Position</u>	<u>To Position</u>	<u>Effective</u>
-------------	----------------------	--------------------	------------------

F. Retirement – Administration

<u>Name</u>	<u>Position</u>	<u>Building</u>	<u>Effective</u>
Kelly Blake	Superintendent	Administration	6/30/2025

G. Retirement – Certified

<u>Name</u>	<u>Position</u>	<u>Building</u>	<u>Effective</u>
-------------	-----------------	-----------------	------------------

H. Retirement – Non-Certified

<u>Name</u>	<u>Position</u>	<u>Building</u>	<u>Effective</u>
-------------	-----------------	-----------------	------------------

I. Termination - Non-Certified

<u>Name</u>	<u>Position</u>	<u>Building</u>	<u>Effective</u>
-------------	-----------------	-----------------	------------------

**WAVERLY COMMUNITY SCHOOLS
BOARD OF EDUCATION
REGULAR BOARD MEETING
JUNE 16, 2025**

FOR ACTION***

Subject:

Finance Report

Recommendation:

The Superintendent recommends the Board of Education review and approve the following report:

Financial Report:

The cash balance as of April 30, 2025, was \$9,636,226.46. Receipts during May, consisting of State Aid, property taxes and other revenues/transfers-in in the amount of \$5,472,586.81 minus disbursements during May of \$7,187,005.18, left the district with a General Fund cash balance, as of May 31, 2025, of \$7,921,808.09.

2024-25 General Fund expenditures/transfers-out exceed revenues/transfers-in by \$777,888. A summary of year-to-date activity in comparison to the budget is included in the supporting documentation.

2024-25 Student Activity Fund revenues/transfers-in exceed expenditures/transfers-out by \$66,159. A summary of year-to-date activity in comparison to the budget is included in the supporting documentation.

2024-25 Sinking Fund revenues exceed expenditures by \$1,127,447. A summary of year to date activity in comparison to the budget is included in the supporting documentation.

2024-25 Public Improvement Fund expenditures/transfers-out exceed revenues/transfers-in by \$1,180,484. A summary of year-to-date activity in comparison to the budget is included in the supporting documentation.

The balance of the 2022 Building and Site, Series I Bonds remaining to be allocated, including \$3,747,017 of accrued interest/change in market value, is \$176,956. A summary of life-to-date activity is included in the supporting documentation

The balance of the 2024 Building and Site, Series II Bonds remaining to be allocated, including \$2,820,606 of accrued interest/change in market value, is \$7,360,346. A summary of life-to-date activity is included in the supporting documentation

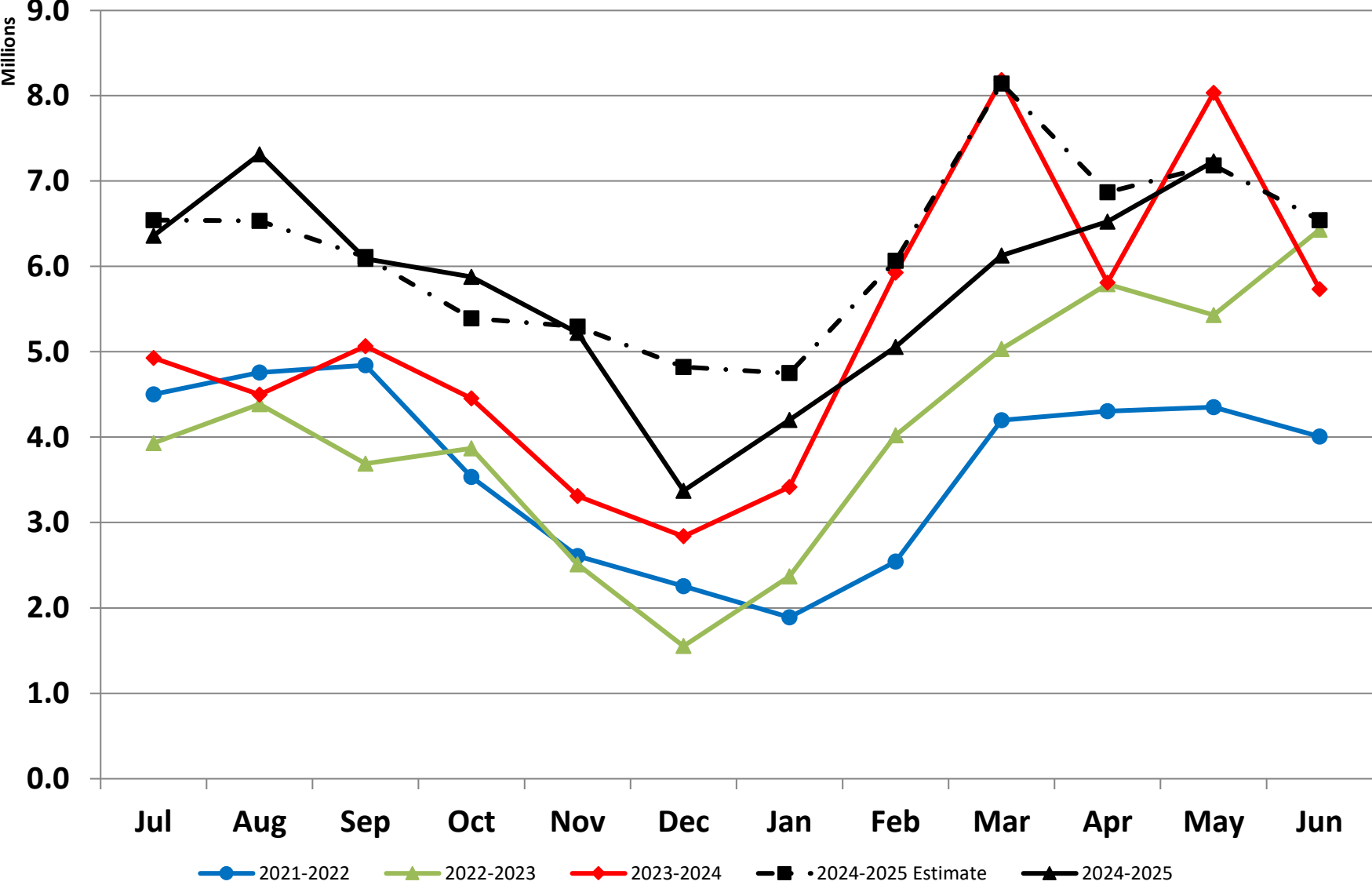
Waverly Community Schools

Finance Committee - Cash Position Report

For the Month Ended May 31, 2025

Balance on Hand April 30, 2025	9,636,226.46
Revenues	
State Aid	2,926,737.81
Taxes	32,825.05
Other Revenue	453,966.20
Interfund Transfers In	2,050,098.28
State Aid Note Proceeds	-
	<u>5,463,627.34</u>
Disbursements	
Payroll and Related Liabilities	(4,628,925.10)
Other Expenditures	(2,558,080.08)
State Aid Repayment	-
	<u>(7,187,005.18)</u>
Prior Month Adjustments - May 2025	8,959.47
Balance on Hand May 31, 2025	<u><u>7,921,808.09</u></u>
PNC Bank - General	5,103,940.73
MILAF	2,545,983.35
PNC Bank - Payroll	271,884.01
Comerica - Checking	-
	<u><u>7,921,808.09</u></u>
Difference	(0.00)

Waverly Community Schools Cash Flow Analysis (Monthly Lows)



Waverly Community Schools
General Fund - Budgetary Comparison Schedule
For the Month Ended May 31, 2025

	Revised Budget	Actual	Over (Under) Budget	% Available
Revenue				
Local sources	10,395,754	10,170,574	(225,180)	2.2%
State sources	32,746,307	24,884,166	(7,862,141)	24.0%
Federal sources	885,114	418,244	(466,870)	52.7%
Intergovernmental	4,463,466	3,251,099	(1,212,367)	27.2%
Transfers In	125,000	-	(125,000)	100.0%
Total revenue	48,615,641	38,724,084	(9,891,558)	20.3%
Expenditures				
Current:				
Instruction:				
Basic program	16,917,913	13,473,989	(3,443,924)	20.4%
Added needs	9,173,293	6,898,983	(2,274,310)	24.8%
Total instruction	26,091,206	20,372,973	(5,718,233)	21.9%
Support Services:				
Pupil	3,620,159	3,006,895	(613,265)	16.9%
Instructional staff	2,924,991	2,322,737	(602,254)	20.6%
General administration	493,951	413,203	(80,748)	16.3%
School administration	3,433,281	2,957,600	(475,681)	13.9%
Business	681,492	587,267	(94,225)	13.8%
Operations and maintenance	4,506,899	3,711,244	(795,655)	17.7%
Pupil transportation services	1,353,273	1,350,773	(2,500)	0.2%
Central	1,140,826	1,017,953	(122,873)	10.8%
Other	314,005	269,790	(44,215)	14.1%
Total support services	18,468,877	15,637,461	(2,831,416)	15.3%
Athletics	724,183	656,563	(67,620)	9.3%
Community services	-	1,713	1,713	0.0%
Welfare Activities	8,830	8,829	(1)	0.0%
Non Publics	13,608	6,200	(7,408)	54.4%
Facility Acquisition	-	10,891	10,891	0.0%
Debt service:				
Principal	-	-	-	0.0%
Interest	-	-	-	0.0%
Capital outlay	93,044	104,462	11,418	-12.3%
Payments to other public schools	1,712,619	1,602,879	(109,740)	6.4%
Total expenditures	47,112,367	38,401,971	(8,710,396)	18.5%
Excess of Revenue (Under)Over Expenditures	1,503,274	322,112	(1,181,162)	
Transfers Out	1,100,000	1,100,000	-	0.0%
Change in Fund Balance	403,274	(777,888)	(1,181,162)	
Favorable Expenditure Variance (1.5%)	706,686			
Projected Change in Fund Balance	1,109,960			
Fund Balance - Beginning of year	8,876,530			
Fund Balance - End of year	9,986,490			
	21.2%			

Waverly Community Schools
Student Activity Fund - Budgetary Comparison Schedule
For the Month Ended May 31, 2025

	Original Budget	Actual	Over (Under) Budget	% Available
Revenue				
Local sources	172,456	263,018	90,562	-52.5%
State sources	-	-	-	0.0%
Federal sources	-	-	-	0.0%
Intergovernmental	-	-	-	0.0%
Transfers In	-	-	-	0.0%
Total revenue	172,456	263,018	90,562	-52.5%
Expenditures				
Student Activities	108,104	124,179	16,075	-14.9%
Athletics	58,298	72,680	14,383	-24.7%
Total expenditures	166,401	196,859	30,458	-18.3%
Excess of Revenue (Under)Over Expenditures	6,055	66,159	60,104	
Transfers Out	-	-	-	0.0%
Change in Fund Balance	6,055	66,159	60,104	
Fund Balance - Beginning of year	329,114			
Fund Balance - End of year	335,169			

Waverly Community Schools
Sinking Fund - Budgetary Comparison Schedule
For the Month Ended May 31, 2025

	Original Budget	Actual	Over (Under) Budget	% Available
Revenue				
Local sources	1,132,179	1,143,585	11,406	-1.0%
State sources	-	-	-	0.0%
Federal sources	-	-	-	0.0%
Intergovernmental	-	-	-	0.0%
Transfers In	-	-	-	0.0%
Total revenue	1,132,179	1,143,585	11,406	-1.0%
Expenditures				
Current:				
Support Services - Business	-	1,138	1,138	0.0%
Support Services - Central	-	-	-	0.0%
Facilities Acquisition, Construction and Improvements:				
Site Acquisition Services	-	-	-	0.0%
Site Improvement Services	-	15,000	15,000	0.0%
Architecture and Engineering Services	-	-	-	0.0%
Building Acquisition and Construction Services	-	-	-	0.0%
Building Improvement Services	-	-	-	0.0%
Other Acquisition and Construction Services	-	-	-	0.0%
Total expenditures	-	16,138	16,138	0.0%
Excess of Revenue (Under)Over Expenditures	1,132,179	1,127,447	(4,732)	
Transfers Out	-	-	-	
Net Change in Fund Balance	1,132,179	1,127,447	(4,732)	
Fund Balance - Beginning of year	4,221,702			
Fund Balance - End of year	5,353,881			

Waverly Community Schools
Public Improvement Fund - Budgetary Comparison Schedule
For the Month Ended May 31, 2025

	Revised Budget	Actual	Over (Under) Budget	% Available
Revenue				
Local sources	50,000	76,709	26,709	-53.4%
State sources	1,148,658	1,148,659	1	0.0%
Federal sources	-	-	-	0.0%
Intergovernmental	-	-	-	0.0%
Transfers In	1,100,000	1,100,000	-	0.0%
Total revenue	2,298,658	2,325,368	26,710	-2.3%
Expenditures				
Current:				
Support Services - Business	-	-	-	0.0%
Support Services - Operations and Maintenance	-	69,900	69,900	0.0%
Support Services - Transportation	-	-	-	0.0%
Support Services - Central	-	-	-	0.0%
Facilities Acquisition, Construction and Improvements:				
Site Acquisition Services	-	-	-	0.0%
Site Improvement Services	-	-	-	0.0%
Architecture and Engineering Services	-	-	-	0.0%
Building Acquisition and Construction Services	-	-	-	0.0%
Building Improvement Services	4,129,180	3,435,953	(693,227)	0.0%
Other Acquisition and Construction Services	-	-	-	0.0%
Total expenditures	4,129,180	3,505,853	(623,327)	0.0%
Excess of Revenue (Under)Over Expenditures	(1,830,522)	(1,180,484)	650,038	
Transfers Out	-	-	-	
Net Change in Fund Balance	(1,830,522)	(1,180,484)	650,038	
Fund Balance - Beginning of year	2,879,532	2,879,532		
Fund Balance - End of year	1,049,010	1,699,048		

Waverly Community Schools

2022 Building and Site Bonds, Series I

Budget Summary

As of May 31, 2025

	Budget	Actual	Encumbered	Balance Remaining
Construction				
New Construction	-	617,433	-	(617,433)
Remodeling	42,045,645	40,702,399	(249,142)	1,592,388
Site Improvements	4,041,042	6,360,301	1,497,094	(3,816,353)
Construction Base Budget Subtotal	46,086,687	47,680,133	1,247,953	(2,841,399)
Instructional Technology				
Computers and Mobile Devices	1,468,271	1,621,294	(0)	(153,023)
Audio / Visual	1,834,372	1,044,900	722,518	66,954
Instructional Technology Subtotal	3,302,643	2,666,194	722,518	(86,069)
Loose Furnishings and Equipment				
Non-Instructional Computers and Mobile Devices	73,904	-	-	73,904
Non-Instructional Audio / Visual	-	-	190,986	(190,986)
Furnishings, Fixtures and Equipment (FF&E)	4,021,389	2,569,544	1,489,466	(37,621)
Loose Furnishings and Equipment Subtotal	4,095,293	2,569,544	1,680,453	(154,703)
District				
Buses	449,946	-	-	449,946
Contingency	47,739	38,928	(187,722)	196,533
Election/Issuance Costs	839,463	258,448	-	581,015
General Conditions	994,618	1,476,274	(15,783)	(465,873)
Architect and Engineering Fees	3,011,715	5,241,759	(2,106,939)	(123,105)
A/E Reimbursables	431,821	858,897	(4,935)	(422,141)
Technology Design	393,305	549,787	(156,482)	-
Construction Mgr	3,050,990	4,252,870	(1,201,880)	0
District Subtotal	9,219,597	12,676,963	(3,673,740)	216,375
Bank Interest/Proceeds	(704,265)	(3,747,017)	-	3,042,752
Totals	61,999,956	61,845,816	(22,817)	176,956
Underwriters Discount	454,800	454,800	-	-
Grand Total	62,454,756	62,300,616	(22,817)	176,956

Waverly Community Schools

2022 Building and Site Bonds, Series II

Budget Summary

As of May 31, 2025

	Budget	Actual	Encumbered	Balance Remaining
Construction				
New Construction	17,759,391	-	2,452,548	15,306,843
Remodeling	21,168,632	-	39,037,101	(17,868,469)
Site Improvements	2,352,092	-	-	2,352,092
Construction Base Budget Subtotal	41,280,115	-	41,489,649	(209,534)
Instructional Technology				
Computers and Mobile Devices	598,414	-	-	598,414
Audio / Visual	974,132	-	-	974,132
Instructional Technology Subtotal	1,572,546	-	-	1,572,546
Loose Furnishings and Equipment				
Non-Instructional Computers and Mobile Devices	272,130	-	-	272,130
Non-Instructional Audio / Visual	290,215	-	-	290,215
Furnishings, Fixtures and Equipment (FF&E)	1,912,269	-	-	1,912,269
Loose Furnishings and Equipment Subtotal	2,474,614	-	-	2,474,614
District				
Buses	674,918	-	-	674,918
Contingency	3,667,940	-	4,400,100	(732,160)
Election/Issuance Costs	829,463	252,597	-	576,866
General Conditions	1,055,897	-	982,546	73,351
Architect and Engineering Fees	2,775,410	-	2,775,410	-
A/E Reimbursables	462,568	-	69,903	392,665
Technology Design	251,083	-	251,083	-
Construction Mgr	3,238,964	-	3,238,964	-
District Subtotal	12,956,243	252,597	11,718,006	985,640
Bank Interest/Proceeds	(283,526)	(2,820,606)	-	2,537,080
Totals	57,999,992	(2,568,009)	53,207,655	7,360,346
Underwriters Discount	1,154,642	1,154,642	-	1
Grand Total	59,154,634	(1,413,367)	53,207,655	7,360,346

Waverly Community Schools
Building and Site Bonds - May 2021 Authorization
Budget Summary - All Series
As of May 31, 2025

	Budget	Actual	Encumbered	Balance Remaining
Construction				
New Construction	17,759,391	617,433	2,452,548	14,689,410
Remodeling	64,755,108	40,702,399	38,787,960	(14,735,250)
Site Improvements	6,845,048	6,360,301	1,497,094	(1,012,347)
Construction Base Budget Subtotal	89,359,548	47,680,133	42,737,602	(1,058,187)
Instructional Technology				
Computers and Mobile Devices	3,943,267	1,621,294	(0)	2,321,973
Audio / Visual	2,808,504	1,044,900	722,518	1,041,086
Instructional Technology Subtotal	6,751,771	2,666,194	722,518	3,363,059
Loose Furnishings and Equipment				
Non-Instructional Computers and Mobile Devices	618,614	-	-	618,614
Non-Instructional Audio / Visual	290,215	-	190,986	99,229
Furnishings, Fixtures and Equipment (FF&E)	6,012,398	2,569,544	1,489,466	1,953,388
Loose Furnishings and Equipment Subtotal	6,921,227	2,569,544	1,680,453	2,671,231
District				
Buses	1,124,864	-	-	1,124,864
Contingency	3,895,021	38,928	4,212,379	(356,285)
Election/Issuance Costs	1,787,689	511,045	-	1,276,644
General Conditions	2,099,386	1,476,274	966,763	(343,651)
Architect and Engineering Fees	5,901,198	5,241,759	782,544	(123,105)
A/E Reimbursables	913,401	858,897	66,372	(11,868)
Technology Design	817,208	549,787	280,971	(13,550)
Construction Mgr	6,439,865	4,252,870	2,120,358	66,637
District Subtotal	22,978,632	12,929,559	8,429,387	1,619,686
Bank Interest/Proceeds	(1,011,178)	(6,567,623)	-	5,556,445
Totals	125,000,000	59,277,807	53,569,959	12,152,234
Underwriters Discount	1,609,442	1,609,442	-	1
Grand Total	126,609,442	60,887,249	53,569,959	12,152,234

**WAVERLY COMMUNITY SCHOOLS
BOARD OF EDUCATION
REGULAR BOARD MEETING
JUNE 16, 2025**

Report #24-66

FOR ACTION

Subject:

Waverly Community Schools 2025-26 Budget Resolutions

Recommendation:

The Superintendent recommends the Board of Education approve the following resolutions:

The 2025-26 General Fund Resolution with revenues of \$48,983,977 and expenditures of \$49,977,494

The 2025-26 Special Revenue Funds Resolution with revenues of \$2,792,240 and expenditures of \$2,952,043

The 2025-26 Debt Retirement Fund Resolution with revenues of \$6,977,326 and expenditures of \$6,752,013

The 2025-26 Sinking Fund Resolution with revenues of \$1,218,543 and expenditures of \$-0-

Statement of Purpose:

The chief administrative officer is required to provide the school board such information as the board requires for proper consideration of the recommended budget. (MCL 141.434)

Budget Impact:

The projected General Fund balance as of June 30, 2026 is estimated to be \$9,726,135, or 19.9% of current year operating expenditures.

The projected Community Services Fund balance as of June 30, 2026 is estimated to be \$215,944, or 35.9% of current year operating expenditures.

The projected Food Service Fund balance as of June 30, 2026 is estimated to be \$355,887, or 17.3% of current year operating expenditures.

The projected Student Activity Fund balance as of June 30, 2026 is estimated to be \$341,224.

The projected Debt Retirement Fund balance as of June 30, 2026 is estimated to be \$1,311,961, or 19.4% of current year debt retirement.

The projected Sinking Fund balance as of June 30, 2026 is estimated to be \$6,572,424

Historical Perspective:

School districts are required to adopt their 2025-26 budget(s) by June 30, 2025 for the fiscal year beginning July 1, 2025. The State of Michigan has not yet passed a budget for the School Aid Fund.

Discussion of Options:

The Board may adopt the resolutions collectively, reject the resolutions collectively, or take action on each individual resolution separately.

Rationale for Recommendation:

The Board of Education has the responsibility of reviewing the budget presented, holding a public hearing, modifying it as necessary, and approving it for implementation prior to the beginning of the fiscal year. (MCL 141.434)

Strategic Plan Reference:

As the heart of the community, our mission is to educate and prepare each student to achieve her or his academic best, develop character, become a lifelong learner, and contribute as a citizen of our global society.

GENERAL FUND APPROPRIATIONS
Resolution for Adoption by
The Waverly Community Schools Board of Education

RESOLVED that this resolution shall be the General appropriations of Waverly Community Schools for the 2025-26 fiscal year; a resolution to make appropriations; to provide for the expenditure of the appropriations; and to provide for the disposition of all revenue received by the Waverly Community Schools.

BE IT FURTHER RESOLVED, that the total revenues and unappropriated fund balance estimated to be available for appropriation in the General Fund of the school district for fiscal year 2025-26 which includes 18.0000 operating mills to be levied on all property, except principal residence and other property exempted by law and 1.8842 supplemental (hold harmless) operating mills on all principal residences, qualified agricultural property, qualified forest property, industrial personal property and commercial personal property not otherwise exempted by law of ad valorem taxes to be used for operating purposes is as follows:

Revenue:

Local	\$10,745,037
State	32,559,556
Federal	781,175
Other Financing Sources	4,898,209
Total Revenue	\$48,983,977
Total Fund Balance, July 1 Available to Appropriate	\$9,986,490
Total Available to Appropriate	\$58,970,467

BE IT FURTHER RESOLVED, that \$49,977,494 of the total available to appropriate in the general fund is hereby appropriated in the amounts and for the purposes set forth below:

Expenditures:

Instruction	
Basic Programs	\$17,712,013
Added Needs	10,210,924
Support Services	
Pupil Support	4,069,536
Instructional Staff Support	2,945,147
General Administration	460,807
School Administration	3,293,465
Business Services	931,125
Operations and Maintenance	4,928,132
Transportation	1,497,907
Central Support	1,740,500
Other Support	1,074,330
Community Activities	-0-
Nonpublic Schools	13,608
Facilities Acquisitions and Debt Service	-0-
Other Financing Uses	1,100,000
Total Appropriated	\$49,977,494

BE IT FURTHER RESOLVED, that an amount not to exceed \$1,100,000 of local revenue shall be appropriated as Other Financing Uses and transferred from the General Fund to the Public Improvement Fund and that such funds shall be used for non-routine capital items, including, but not limited to, the construction of new buildings, major remodeling of buildings, and acquisition of equipment and vehicles.

BE IT FURTHER RESOLVED, that no board of education member or employee of the school district shall expend any funds or obligate the expenditure of any funds except pursuant to appropriations made by the board of education and in keeping with the budgetary policy statement hitherto adopted by the board. Changes in the amount appropriated by the board shall require approval of the board.

Ayes: Members

Nays: Members

Resolution declared adopted.

Secretary, Board of Education

The undersigned duly qualified and acting Secretary of the Board of Education of Waverly Community Schools, Ingham, Eaton and Clinton Counties, Michigan, hereby certifies that the foregoing is a true and complete copy of a resolution adopted by the Board of Education at a _____ meeting held on _____, 2025, the original of which resolution is a part of the Board's minutes, and further certifies that notice of the meeting was given to the public under the Open Meetings Act, 1976 PA 267, as amended.

Secretary, Board of Education

SPECIAL REVENUE FUNDS APPROPRIATIONS
Resolution for Adoption by
The Waverly Community Schools Board of Education

RESOLVED that this resolution shall be the Special Revenue appropriations of Waverly Community Schools for the 2025-2026 fiscal year; a resolution to make appropriations; to provide for the expenditure of the appropriations; and to provide for the disposition of all revenue received by Waverly Community Schools.

BE IT FURTHER RESOLVED, that the total revenues and unappropriated fund balance estimated to be available for appropriation in the Special Revenue Funds of the school district for fiscal year 2025-2026 is as follows:

Revenue:	
Local	\$764,240
State	100,000
Federal	1,928,000
Other Financing Sources	-0-
 Total Revenue	 \$2,792,240
 Total Fund Balance, July 1 Available to Appropriate	 \$1,173,717
 Total Available to Appropriate	 \$3,965,957

BE IT FURTHER RESOLVED, that \$2,952,043 of the total available to appropriate in the Special Revenue Funds is hereby appropriated in the amounts and for the purposes set forth below:

Expenditures:	
Instructional Services	\$11,000
Business Services	37,411
Operations and Maintenance	500
Athletics	58,298
Student Activities	108,104
Food Services	2,021,182
Community Services	590,549
Fund Modifications (Transfers Out)	125,000
 Total Appropriated	 \$2,952,043

BE IT FURTHER RESOLVED, that no board of education member or employee of the school district shall expend any funds or obligate the expenditure of any funds except pursuant to appropriations made by the board of education and in keeping with the budgetary policy statement hitherto adopted by the board. Changes in the amount appropriated by the board shall require approval of the board.

Ayes: Members

Nays: Members

Resolution declared adopted.

Secretary, Board of Education

The undersigned duly qualified and acting Secretary of the Board of Education of _____, Michigan, hereby certifies that the foregoing is a true and complete copy of a resolution adopted by the Board of Education at a _____ meeting held on _____, 2025, the original of which resolution is a part of the Board's minutes, and further certifies that notice of the meeting was given to the public under the Open Meetings Act, 1976 PA 267, as amended.

Secretary, Board of Education

DEBT SERVICE FUNDS APPROPRIATIONS
Resolution for Adoption by
The Waverly Community Schools Board of Education

RESOLVED that this resolution shall be the Debt Retirement appropriations of Waverly Community Schools for the 2025-2026 fiscal year; a resolution to make appropriations; to provide for the expenditure of the appropriations; and to provide for the disposition of all revenue received by Waverly Community Schools.

BE IT FURTHER RESOLVED, that the total revenues and unappropriated fund balance estimated to be available for appropriation in the Debt Service Funds of the school district for fiscal year 2025-2026 which includes 6.40 debt service mills to be levied on all property not otherwise exempted by law is as follows:

Revenue:	
Local sources	\$6,899,676
State sources	77,650
 Total Revenue	 \$6,977,326
 Total Fund Balance, July 1 Available to Appropriate	 \$1,086,648
 Total Available to Appropriate	 \$8,063,974

BE IT FURTHER RESOLVED, that \$7,512,182 of the total available to appropriate in the Debt Service Funds is hereby appropriated in the amounts and for the purposes set forth below:

Expenditures:	
Business Services	700
Principal	\$2,370,000
Interest	\$4,381,313
 Total Appropriated	 \$6,752,013

BE IT FURTHER RESOLVED, that no board of education member or employee of the school district shall expend any funds or obligate the expenditure of any funds except pursuant to appropriations made by the board of education and in keeping with the budgetary policy statement hitherto adopted by the board. Changes in the amount appropriated by the board shall require approval of the board.

Ayes: Members

Nays: Members

Resolution declared adopted.

Secretary, Board of Education

The undersigned duly qualified and acting Secretary of the Board of Education of Waverly Community Schools, Ingham, Eaton and Clinton Counties, Michigan, hereby certifies that the foregoing is a true and complete copy of a resolution adopted by the Board of Education at a _____ meeting held on _____, 2025, the original of which resolution is a part of the Board's minutes, and further certifies that notice of the meeting was given to the public under the Open Meetings Act, 1976 PA 267, as amended.

Secretary, Board of Education

SINKING FUND APPROPRIATIONS
Resolution for Adoption by
The Waverly Community Schools Board of Education

RESOLVED that this resolution shall be the Sinking Fund appropriations of Waverly Community Schools for the 2025-2026 fiscal year; a resolution to make appropriations; to provide for the expenditure of the appropriations; and to provide for the disposition of all revenue received by Waverly Community Schools.

BE IT FURTHER RESOLVED, that the total revenues and unappropriated fund balance estimated to be available for appropriation in the Sinking Fund of the school district for fiscal year 2025-2026 which includes 1.00 sinking fund mills to be levied on all property not otherwise exempted by law is as follows:

Revenue:	
Local sources	\$1,218,543
Total Revenue	\$1,218,543
Total Fund Balance, July 1 Available to Appropriate	\$5,353,881
Total Available to Appropriate	\$6,572,424

BE IT FURTHER RESOLVED, that \$0 of the total available to appropriate in the Sinking Fund is hereby appropriated in the amounts and for the purposes set forth below:

Expenditures:	
Facilities Acquisition, Construction & Improvement	\$-0-
Total Appropriated	\$-0-

BE IT FURTHER RESOLVED, that no board of education member or employee of the school district shall expend any funds or obligate the expenditure of any funds except pursuant to appropriations made by the board of education and in keeping with the budgetary policy statement hitherto adopted by the board. Changes in the amount appropriated by the board shall require approval of the board.

Ayes: Members

Nays: Members

Resolution declared adopted.

Secretary, Board of Education

The undersigned duly qualified and acting Secretary of the Board of Education of Waverly Community Schools, Ingham, Eaton and Clinton Counties, Michigan, hereby certifies that the foregoing is a true and complete copy of a resolution adopted by the Board of Education at a _____ meeting held on _____, 2025, the original of which resolution is a part of the Board's minutes, and further certifies that notice of the meeting was given to the public under the Open Meetings Act, 1976 PA 267, as amended.

Secretary, Board of Education

**WAVERLY COMMUNITY SCHOOLS
BOARD OF EDUCATION
REGULAR MEETING
JUNE 16, 2025**

Report #24-67

FOR ACTION***

Subject:

Certification of Summer Tax Levy – City of Lansing, Delta Township and Lansing Township

Recommendation:

The Superintendent recommends the Board of Education adopt the proposed summer tax levy for the City of Lansing, Delta Township and Lansing Township. A certified copy is affixed to the official minutes of this meeting. A copy of the certification (L-4029) is included in the support materials.

Statement of Purpose:

To certify the tax levy, allowing local taxing units to collect summer taxes for the district.

Budget Impact:

If the certification of tax levy is not adopted, taxing units will not collect summer taxes for the school district, which could impact cash flow and necessitate short-term borrowing.

Historical Perspective:

Section 380.1213 of Michigan School Code provides that the Secretary of the Board of Education file a certified copy of a resolution adopted by the Board, stating the number of mills to be levied on taxable properties within the school district. This certification is to be filed with the appropriate township(s) and city clerk(s).

A breakdown of the summer tax levy is as follows:

<u>Operating</u>	<u>Rate</u>	<u>Expires</u>
All – Voted (Hold Harmless)	0.9421	December 31, 2032
Commercial Personal – Voted	3.9421	December 31, 2032
Non-Home – Voted	8.0579	December 31, 2032
 <u>2022 Building and Site Debt (2021)</u>		
All	1.5500	December 31, 2051
 <u>2024 Building and Site Debt (2021)</u>		
All	1.6500	December 31, 2053
 <u>2016 Sinking Fund</u>		
All	0.5000	December 31, 2025

The summer levy for the City of Lansing, Lansing Township and Delta Township is based upon fifty percent (50%) of the total levy.

Discussion of Options:

The Board may adopt the recommendation as presented, reject the recommendation or could reduce the amount of any of the above levies. Any reduction in tax levy will result in the loss of revenue for the District.

Strategic Plan Reference:

As the heart of the community, our mission is to educate and prepare each student to achieve her or his academic best, develop character, become a life long learner, and contribute as a citizen of our global society.

2025 Tax Rate Request (This form must be completed and submitted on or before September 30, 2025)

MILLAGE REQUEST REPORT TO COUNTY BOARD OF COMMISSIONERS

Carefully read the instructions on page 2.

This form is issued under authority of MCL Sections 211.24e, 211.34 and 211.34d. Filing is mandatory; Penalty applies.

County(ies) Where the Local Government Unit Levies Taxes Ingham County - Lansing Township	2025 Taxable Value for ALL Properties in the Unit as of 5-27-2025. 161,918,766
Local Government Unit Requesting Millage Levy Waverly Community Schools	For LOCAL School Districts: 2025 Taxable Value excluding Principal Residence, Qualified Agricultural, Qualified Forest, Industrial Personal and Commercial Personal Properties. "Not yet known"

This form must be completed for each unit of government for which a property tax is levied. Penalty for non-filing is provided under MCL Sec 211.119. The following tax rates have been authorized for levy on the 2025 tax roll.

(1) Source	(2) Purpose of Millage	(3) Date of Election	(4) Original Millage Authorized by Election, Charter, etc.	(5)** 2024 Millage Rate Permanently Reduced by MCL 211.34d "Headlee"	(6) 2025 Current Year "Headlee" Millage Reduction Fraction	(7) 2025 Millage Rate Permanently Reduced by MCL 211.34d "Headlee"	(8) Sec. 211.34 Truth in Assessing or Equalization Millage Rollback Fraction	(9) Maximum Allowable Millage Levy *	(10) Millage Requested to be Levied July 1	(11) Millage Requested to be Levied Dec. 1	(12) Expiration Date of Millage Authorized
Extra Voted	Operating NON-HOME	08/2022	18.4946	18.4946	1.0000	18.4946	1.0000	18.0000	8.0579		12/2032
Hold Harmless Extra Voted	Operating ALL	08/2022	9.3000	9.3000	1.0000	9.3000	1.0000	9.3000	0.9421		12/2032
Extra Voted	2022 Debt DEBT-ALL	05/2021	3.1000	N/A	1.0000	N/A	1.0000	3.1000	1.5500		12/2051
Extra Voted	2024 Debt DEBT-ALL	05/2021	3.3000	N/A	1.0000	N/A	1.0000	3.3000	1.6500		12/2053
Extra Voted	Sinking Fund ALL	03/2016	1.0000	1.0000	1.0000	1.0000	1.0000	1.0000	0.5000		12/2025

Prepared by Andrew Dravland	Telephone Number (517) 244-4515	Title of Preparer Director, Business Operations, Ingham ISD	Date 05/22/2025
---------------------------------------	---	---	---------------------------

CERTIFICATION: As the representatives for the local government unit named above, we certify that these requested tax levy rates have been reduced, if necessary to comply with the state constitution (Article 9, Section 31), and that the requested levy rates have also been reduced, if necessary, to comply with MCL Sections 211.24e, 211.34 and, for LOCAL school districts which levy a Supplemental (Hold Harmless) Millage, 380.1211(3).

<input type="checkbox"/> Clerk	Signature	Print Name	Date
<input checked="" type="checkbox"/> Secretary			
<input type="checkbox"/> Chairperson	Signature	Print Name	Date
<input checked="" type="checkbox"/> President			

* Under Truth in Taxation, MCL Section 211.24e, the governing body may decide to levy a rate which will not exceed the maximum authorized rate allowed in column 9. The requirements of MCL 211.24e must be met prior to levying an operating levy which is larger than the base tax rate but not larger than the rate in column 9.

** **IMPORTANT:** See instructions on page 2 regarding where to find the millage rate used in column (5).

Local School District Use Only. Complete if requesting millage to be levied. See STC Bulletin 2 of 2025 for instructions on completing this section.	
Total School District Operating Rates to be Levied (HH/Supp and NH Oper ONLY)	Rate ***
For Principal Residence, Qualified Ag, Qualified Forest and Industrial Personal	0.9421
For Commercial Personal	3.9421
For all Other	9.0000

***** FOR JULY 1 LEVY**

2025 Tax Rate Request (This form must be completed and submitted on or before September 30, 2025)

MILLAGE REQUEST REPORT TO COUNTY BOARD OF COMMISSIONERS

Carefully read the instructions on page 2.

This form is issued under authority of MCL Sections 211.24e, 211.34 and 211.34d. Filing is mandatory; Penalty applies.

County(ies) Where the Local Government Unit Levies Taxes Ingham County - City of Lansing	2025 Taxable Value for ALL Properties in the Unit as of 5-27-2025. 3,053,788
Local Government Unit Requesting Millage Levy Waverly Community Schools	For LOCAL School Districts: 2025 Taxable Value excluding Principal Residence, Qualified Agricultural, Qualified Forest, Industrial Personal and Commercial Personal Properties. "Not yet known"

This form must be completed for each unit of government for which a property tax is levied. Penalty for non-filing is provided under MCL Sec 211.119. The following tax rates have been authorized for levy on the 2025 tax roll.

(1) Source	(2) Purpose of Millage	(3) Date of Election	(4) Original Millage Authorized by Election, Charter, etc.	(5)** 2024 Millage Rate Permanently Reduced by MCL 211.34d "Headlee"	(6) 2025 Current Year "Headlee" Millage Reduction Fraction	(7) 2025 Millage Rate Permanently Reduced by MCL 211.34d "Headlee"	(8) Sec. 211.34 Truth in Assessing or Equalization Millage Rollback Fraction	(9) Maximum Allowable Millage Levy *	(10) Millage Requested to be Levied July 1	(11) Millage Requested to be Levied Dec. 1	(12) Expiration Date of Millage Authorized
Extra Voted	Operating NON-HOME	08/2022	18.4946	18.4946	1.0000	18.4946	1.0000	18.0000	8.0579		12/2032
Hold Harmless Extra Voted	Operating ALL	08/2022	9.3000	9.3000	1.0000	9.3000	1.0000	9.3000	0.9421		12/2032
Extra Voted	2022 Debt DEBT-ALL	05/2021	3.1000	N/A	1.0000	N/A	1.0000	3.1000	1.5500		12/2051
Extra Voted	2024 Debt DEBT-ALL	05/2021	3.3000	N/A	1.0000	N/A	1.0000	3.3000	1.6500		12/2053
Extra Voted	Sinking Fund ALL	03/2016	1.0000	1.0000	1.0000	1.0000	1.0000	1.0000	0.5000		12/2025

Prepared by Andrew Dravland	Telephone Number (517) 244-4515	Title of Preparer Director, Business Operations, Ingham ISD	Date 05/22/2025
---------------------------------------	---	---	---------------------------

CERTIFICATION: As the representatives for the local government unit named above, we certify that these requested tax levy rates have been reduced, if necessary to comply with the state constitution (Article 9, Section 31), and that the requested levy rates have also been reduced, if necessary, to comply with MCL Sections 211.24e, 211.34 and, for LOCAL school districts which levy a Supplemental (Hold Harmless) Millage, 380.1211(3).

<input type="checkbox"/> Clerk	Signature	Print Name	Date
<input checked="" type="checkbox"/> Secretary			
<input type="checkbox"/> Chairperson	Signature	Print Name	Date
<input checked="" type="checkbox"/> President			

* Under Truth in Taxation, MCL Section 211.24e, the governing body may decide to levy a rate which will not exceed the maximum authorized rate allowed in column 9. The requirements of MCL 211.24e must be met prior to levying an operating levy which is larger than the base tax rate but not larger than the rate in column 9.

** **IMPORTANT:** See instructions on page 2 regarding where to find the millage rate used in column (5).

Local School District Use Only. Complete if requesting millage to be levied. See STC Bulletin 2 of 2025 for instructions on completing this section.	
Total School District Operating Rates to be Levied (HH/Supp and NH Oper ONLY)	Rate ***
For Principal Residence, Qualified Ag, Qualified Forest and Industrial Personal	0.9421
For Commercial Personal	3.9421
For all Other	9.0000

***** FOR JULY 1 LEVY**

2025 Tax Rate Request (This form must be completed and submitted on or before September 30, 2025)

MILLAGE REQUEST REPORT TO COUNTY BOARD OF COMMISSIONERS

Carefully read the instructions on page 2.

This form is issued under authority of MCL Sections 211.24e, 211.34 and 211.34d. Filing is mandatory; Penalty applies.

County(ies) Where the Local Government Unit Levies Taxes Eaton County - Delta Township	2025 Taxable Value for ALL Properties in the Unit as of 5-27-2025. 767,615,985
Local Government Unit Requesting Millage Levy Waverly Community Schools	For LOCAL School Districts: 2025 Taxable Value excluding Principal Residence, Qualified Agricultural, Qualified Forest, Industrial Personal and Commercial Personal Properties. "Not yet known"

This form must be completed for each unit of government for which a property tax is levied. Penalty for non-filing is provided under MCL Sec 211.119. The following tax rates have been authorized for levy on the 2025 tax roll.

(1) Source	(2) Purpose of Millage	(3) Date of Election	(4) Original Millage Authorized by Election, Charter, etc.	(5)** 2024 Millage Rate Permanently Reduced by MCL 211.34d "Headlee"	(6) 2025 Current Year "Headlee" Millage Reduction Fraction	(7) 2025 Millage Rate Permanently Reduced by MCL 211.34d "Headlee"	(8) Sec. 211.34 Truth in Assessing or Equalization Millage Rollback Fraction	(9) Maximum Allowable Millage Levy *	(10) Millage Requested to be Levied July 1	(11) Millage Requested to be Levied Dec. 1	(12) Expiration Date of Millage Authorized
Extra Voted	Operating NON-HOME	08/2022	18.4946	18.4946	1.0000	18.4946	1.0000	18.0000	8.0579		12/2032
Hold Harmless Extra Voted	Operating ALL	08/2022	9.3000	9.3000	1.0000	9.3000	1.0000	9.3000	0.9421		12/2032
Extra Voted	2022 Debt DEBT-ALL	05/2021	3.1000	N/A	1.0000	N/A	1.0000	3.1000	1.5500		12/2051
Extra Voted	2024 Debt DEBT-ALL	05/2021	3.3000	N/A	1.0000	N/A	1.0000	3.3000	1.6500		12/2053
Extra Voted	Sinking Fund ALL	03/2016	1.0000	1.0000	1.0000	1.0000	1.0000	1.0000	0.5000		12/2025

Prepared by Andrew Dravland	Telephone Number (517) 244-4515	Title of Preparer Director, Business Operations, Ingham ISD	Date 05/22/2025
---------------------------------------	---	---	---------------------------

CERTIFICATION: As the representatives for the local government unit named above, we certify that these requested tax levy rates have been reduced, if necessary to comply with the state constitution (Article 9, Section 31), and that the requested levy rates have also been reduced, if necessary, to comply with MCL Sections 211.24e, 211.34 and, for LOCAL school districts which levy a Supplemental (Hold Harmless) Millage, 380.1211(3).

<input type="checkbox"/> Clerk	Signature	Print Name	Date
<input checked="" type="checkbox"/> Secretary			
<input type="checkbox"/> Chairperson	Signature	Print Name	Date
<input checked="" type="checkbox"/> President			

* Under Truth in Taxation, MCL Section 211.24e, the governing body may decide to levy a rate which will not exceed the maximum authorized rate allowed in column 9. The requirements of MCL 211.24e must be met prior to levying an operating levy which is larger than the base tax rate but not larger than the rate in column 9.

** **IMPORTANT:** See instructions on page 2 regarding where to find the millage rate used in column (5).

Local School District Use Only. Complete if requesting millage to be levied. See STC Bulletin 2 of 2025 for instructions on completing this section.	
Total School District Operating Rates to be Levied (HH/Supp and NH Oper ONLY)	Rate ***
For Principal Residence, Qualified Ag, Qualified Forest and Industrial Personal	0.9421
For Commercial Personal	3.9421
For all Other	9.0000

***** FOR JULY 1 LEVY**

2025 SUMMARY OF SINKING FUND LEVY *

WAVERLY COMMUNITY SCHOOLS

		WAVERLY SINKING FUND LEVY (One-half year rate)
<u>Assessing Unit</u>	<u>2025 Total Taxable Valuation</u>	<u>March 2016 0.5000</u>
Lansing Township	161,918,766	\$80,959.38
City of Lansing - Ingham	3,053,788	\$1,526.89
Delta Township	767,615,985	\$383,807.99
TOTAL SUMMER SINKING FUND LEVY	<u><u>932,588,539</u></u>	<u><u>\$466,294.26</u></u>

* Note: This property tax levy information is for Sinking Fund ONLY. Refer to L-4029 for operating levy.

2025 SUMMARY OF ESTIMATED SUMMER DEBT LEVY *

WAVERLY COMMUNITY SCHOOLS

	WAVERLY DEBT LEVY (One-half year rate)			
Assessing Unit	2025 Total Taxable Valuation	2022 Debt (B&S) (2021) 1.5500	2024 Debt (B&S) (2021) 1.6500	Total Summer Debt 3.2000
Lansing Township	161,918,766	\$250,974.09	\$267,165.96	\$518,140.05
City of Lansing - Ingham	3,053,788	\$4,733.37	\$5,038.75	\$9,772.12
Delta Township	767,615,985	\$1,189,804.78	\$1,266,566.38	\$2,456,371.16
TOTAL SUMMER DEBT	932,588,539	\$1,445,512.24	\$1,538,771.09	\$2,984,283.33

* Note: This property tax levy information is for Debt ONLY. Refer to L-4029 for operating levy.

**INGHAM INTERMEDIATE SCHOOL DISTRICT
TAXABLE VALUATIONS**

Please Note:

These figures are the ad valorem tax roll.
They include amounts that will be diverted
due to TIFA/DDA/LDFA.

DISTRICT: WAVERLY SCHOOLS

The Non-Homestead numbers below are for Headlee calculation only!
Different Non-Homestead numbers may be used for property tax bills.

<u>ASSESSMENT UNIT</u>	<u>2024 TAXABLE</u>	<u>2024 LOSSES</u>	<u>2025 ADDITIONS</u>	<u>TOTAL 2025 TAXABLE</u>
Lansing Township	155,679,534	827,367	1,580,500	161,918,766
Non-Homestead	75,867,555	104,228	484,800	78,063,922
Lansing City-Ingham	2,764,061	18,000	46,000	3,053,788
Non-Homestead	127,080	0	22,100	204,150
Watertown Township	87,165,214	177,850	786,400	91,301,836
Non-Homestead	55,617,510	42,300	506,150	58,078,265
Eaton County Total	784,087,728	7,645,474	18,778,500	813,242,334
Non-Homestead	352,499,142	546,923	3,569,500	358,601,959
Delta Township	741,221,046	7,252,076	16,896,500	767,615,985
Non-Homestead	321,095,891	274,925	2,746,900	326,194,378
Windsor Township	42,866,682	393,398	1,882,000	45,626,349
Non-Homestead	31,403,251	271,998	822,600	32,407,581
TOTAL All Property	1,029,696,537	8,668,691	21,191,400	1,069,516,724
Total Non-Homestead	484,111,287	693,451	4,582,550	494,948,296

	<u>All Property</u>		<u>Non-Homestead Property</u>	
Percentage of Overall Increase	3.8672%		2.2385%	
Increase on Existing	2.6735%		1.4372%	
2025 Base Tax Rate Fraction	0.9740	Truth in Taxation	0.9858	Truth in Taxation
2025 Millage Reduction Fraction	1.0042	Headlee	1.0164	Headlee
		(Cap = 1.0000)		(Cap = 1.0000)

**WAVERLY COMMUNITY SCHOOLS
BOARD OF EDUCATION
REGULAR BOARD MEETING
June 16, 2025**

Report #24-68

SUBJECT: POLICY – **Second Reading**

RECOMMENDATION:

The Superintendent recommends the Board of Education approve the policy updates listed below.

Volume 39, No. 2

Policy 131.1 REVISED	Bylaws and Policies
Policy 2264 REVISED	Nondiscrimination on the Bases of Sex in Education Programs or Activities
Policy 2266 REVISED	Nondiscrimination on the basis of Sex in Education Programs or Activities
Policy 2340 REVISED	Field and Other District-Sponsored Trips
Policy 5320 REVISED	Immunization
Policy 5330 REVISED	Use of Medications
Policy 5330.01 REVISED	Epinephrine Auto-Injectors
Policy 5350 REVISED	Student Health, Well Being, and Suicide Prevention
Policy 8320 REVISED	Personnel Files
Policy 8500 REVISED	Food Services
Policy 8510 REVISED	Wellness
Policy 8640 RESCIND	Transportation for Field and Other District-Sponsored Trips

**WAVERLY COMMUNITY SCHOOLS
BOARD OF EDUCATION
REGULAR BOARD MEETING
JUNE 16, 2025**

Report #24-69

FOR INFORMATION***

Subject:

Acceptance of Cash Donation

Statement of Purpose:

Board policy 7230 (Gifts, Grants, and Bequests) requires that all accepted gifts, grants, or bequests shall be acknowledged by the Board or Superintendent.

Report:

The Gregory Hugh Montgomery Jr. Foundation, a 501c3 organization, has donated Five Thousand Dollars (\$5,000) to Waverly Community Schools to be used by Winans Elementary for the equipping of the Junior Warriors Calming Room.

By accepting this donation, Waverly Community Schools shall assume responsibility for safeguarding and dispensing these funds in accordance with the donor's request.

**WAVERLY COMMUNITY SCHOOLS
BOARD OF EDUCATION
REGULAR BOARD MEETING
JUNE 16, 2025**

Report #24-70

FOR ACTION

Subject:

Special School Election on Tuesday, November 4, 2025

Recommendation:

The Superintendent recommends the Board of Education approve the resolution to call for a special election to be held on November 4, 2025

Statement of Purpose:

The purpose of the special election is to renew the existing sinking fund for construction or repair of school buildings and all other purposes authorized by law

Budget Impact:

The board of education shall levy not to exceed 1.0000 mill for a period of 10 years. The estimate of the revenue the school district will collect if the millage is approved and levied in 2026 is approximately \$1,100,000. A homeowner with a market value of \$200,000 and a taxable value of \$100,000 would continue to pay \$100.00 per year should this ballot proposition be approved by the voters.

Historical Perspective:

The district passed a proposal for a sinking fund in December 2015 for an initial period of ten (10) years from 2016 to 2025, inclusive. At the time of the initial authorization of a sinking fund by the electors, the District was levying a total of 11.6139 mills on all homestead properties (7.4 mills debt and 4.2139 mills supplemental operating). At the time of this request, the District is levying 9.1796 mills on all homestead properties, inclusive of the sinking fund, (6.4 mills debt; 1.7796 mills supplemental operating; 1.0 mills sinking fund) for a total reduction of 2.4343 mills.

Discussion of Options:

The Board of Education can entertain a motion to adopt the resolution as presented, or reject the resolution.

Rationale for Recommendation:

The rationale for this ballot proposition is to renew the sinking fund with the proceeds from this levy for the purpose of repairing schools buildings and all other purposes authorized by law.

Strategic Plan Reference:

As the heart of the community, our mission is to educate and prepare each student to achieve her or his academic best, develop character, become a lifelong learner and contribute as a citizen of our global society.

Waverly Community Schools, Ingham, Eaton and Clinton Counties, Michigan (the “District”)

A regular meeting of the board of education of the District (the “Board”) was held in the _____, within the boundaries of the District, on the 16th day of June, 2025, at _____ o’clock in the __.m. (the “Meeting”).

The Meeting was called to order by _____, President.

Present: Members

Absent: Members

The following preamble and resolution were offered by Member _____ and supported by Member _____:

WHEREAS:

1. This Board intends to submit a proposition at a special election to be held on Tuesday, November 4, 2025.

2. On or before 4:00 p.m. on Tuesday, August 12, 2025, the Board shall certify any ballot proposition to be submitted to the voters at such election to the election coordinator or coordinators designated to conduct elections within the District (the “Election Coordinator”).

NOW, THEREFORE, BE IT RESOLVED THAT:

1. A special election of the school electors of the District be called and held on Tuesday, November 4, 2025.

2. The proposition to be voted on at the special election shall be stated on the ballots in substantially the form as set forth in Exhibit A.

3. The Election Coordinator is requested to:

a. Utilize Lansing State Journal, a newspaper published or of general circulation within the District, for publication of notices in accordance with the election law requirements.

b. Utilize ballot proposition summary information, as prepared by legal counsel, in the forms of the notices of last day of registration and election in substantially the form as set forth in Exhibit B attached hereto.

c. Provide a proof copy of the ballot to the District and its legal counsel in sufficient time to allow the ballot to be proofread prior to printing.

4. The Secretary of this Board is hereby authorized and directed to file a copy of this resolution with the Election Coordinator and with any Election Clerk or clerks designated to conduct elections within the District by 4:00 p.m., on Tuesday, August 12, 2025.

5. All resolutions and parts of resolutions insofar as they conflict with the provisions of this resolution are hereby rescinded.

Ayes: Members

Nays: Members

Resolution declared adopted.

Secretary, Board of Education

The undersigned duly qualified and acting Secretary of the Board of Education of Waverly Community Schools, Ingham, Eaton and Clinton Counties, Michigan, hereby certifies that the foregoing constitutes a true and complete copy of a resolution adopted by the Board at the Meeting, the original of which is part of the Board's minutes. The undersigned further certifies that notice of the Meeting was given to the public pursuant to the provisions of the Open Meetings Act (Act 267, Public Acts of Michigan, 1976, as amended).

Secretary, Board of Education

CJI/keh

EXHIBIT A

WAVERLY COMMUNITY SCHOOLS SINKING FUND MILLAGE RENEWAL PROPOSAL

This proposal will allow the school district to continue to levy the building and site sinking fund millage that expires with the 2025 tax levy.

Shall the currently authorized millage rate of 1 mill (\$1.00 on each \$1,000 of taxable valuation) which may be assessed against all property in Waverly Community Schools, Ingham, Eaton and Clinton Counties, Michigan, be renewed for a period of 10 years, 2026 to 2035, inclusive, to continue to provide for a sinking fund for the construction or repair of school buildings and all other purposes authorized by law; the estimate of the revenue the school district will collect if the millage is approved and levied in 2026 is approximately \$1,100,000 (this is a renewal of millage that will expire with the 2025 tax levy)?

EXHIBIT B

**SUMMARY OF BALLOT PROPOSITION TO BE INSERTED IN THE
NOTICES OF LAST DAY OF REGISTRATION AND ELECTION:**

**WAVERLY COMMUNITY SCHOOLS
SINKING FUND MILLAGE RENEWAL PROPOSAL
1 MILL FOR 10 YEARS**

Full text of the ballot proposition may be obtained at the administrative offices of Waverly Community Schools, 515 Snow Road, Lansing, Michigan 48917-4502, telephone: (517) 321-7265.

**WAVERLY COMMUNITY SCHOOLS
BOARD OF EDUCATION
REGULAR MEETING
June 16, 2025**

Report #24-71

FOR ACTION

Subject:

Ratification of Master Agreement – Teamsters Local 214 – Bus Drivers

Recommendation:

The Superintendent recommends the Board approve the tentative agreement as negotiated between the Teamsters Local 214 Bus Drivers (“Bargaining Unit”) and the Board of Education as presented.

Statement of Purpose:

The Board of Education and the Bargaining Unit must both ratify the agreement in order for it to take effect as of the dates prescribed in the agreement.

Background Information:

The Board representatives and Bargaining Unit representatives reached a tentative agreement for a three-year contract.. The agreement includes language changes reflected throughout the contract.

Discussion of Options:

The Board may entertain a motion to ratify the contract as presented or reject the contract as presented and continue negotiations with the bargaining unit.

Rationale for Recommendation:

The bargaining unit did vote to ratify this contract. The administrative team assigned to negotiate the contract believe this is a fair contract negotiated in good faith between both parties.

**WAVERLY COMMUNITY SCHOOLS
REGULAR BOARD MEETING
MAY 19TH, 2025**

Report #24-72

FOR ACTION

Subject: Waverly Community Schools 9th-12th English Language Arts Book Title Selection Adoption

Recommendation:

The Superintendent recommends the Board of Education approves the titles presented for High School English classes.

Statement of Purpose:

The presented list of book titles was carefully compiled by the Waverly High School English Department staff to enhance our High School English Language Arts curriculum. This list builds upon previously approved texts, aligns with the Common Core Standards exemplar list, incorporates frequently cited Advanced Placement test works, and prioritizes texts by diverse authors and perspectives. This approach ensures that our students engage with a wide range of high-quality materials that not only meet academic requirements but also reflect the rich diversity of our student body and the broader world, fostering a more inclusive and comprehensive educational experience.

Budget Impact:

Approximately \$30,000 (dependent on existing inventory and works selected)

Discussion of Options:

The Board may adopt the recommendation as presented or reject the recommendation.

Strategic Plan Alignment:

Focus Area 3: We will create safe, predictable, consistent, and equitable learning environments in which all students thrive academically, socially, and emotionally.

Objective 1: WCS will establish a comprehensive curriculum review and adoption processes.

**WAVERLY COMMUNITY SCHOOLS
REGULAR BOARD MEETING
MAY 19TH, 2025**

Report #24-73

FOR ACTION

Subject: Waverly Community Schools 5th-12th Social Studies Curriculum Adoption

Recommendation:

The Superintendent recommends the Board of Education approves the Impact Social Studies curriculum and resources for grades 5th through High School.

Statement of Purpose:

The current state of our 5th through High School Social Studies curriculum, due to years of inadequate upkeep, necessitates the adoption of a comprehensive and high quality curriculum. The existing materials are outdated, and in most cases, teacher-created. The recommended curricula, Impact Social Studies by McGraw-Hill publishers, incorporates contemporary scholarship, diverse historical perspectives, and crucial connections to the challenges and opportunities of our present world. The program prompts students' ability to develop essential critical thinking skills, a robust understanding of civic engagement, and the capacity to navigate an increasingly complex global landscape.

Budget Impact:

\$275,436.33

Discussion of Options:

The Board may adopt the recommendation as presented or reject the recommendation.

Strategic Plan Alignment:

Focus Area 3: We will create safe, predictable, consistent, and equitable learning environments in which all students thrive academically, socially, and emotionally.

Objective 1: WCS will establish a comprehensive curriculum review and adoption processes.

WAVERLY COMMUNITY SCHOOLS
BOARD OF EDUCATION
REGULAR BOARD MEETING

June 16, 2025

Report #24-74

FOR ACTION ***

Subject: Membership Resolution – Michigan High School Athletic Association

Recommendation:

The Superintendent recommends the Waverly Community School District continues its membership and relationship with the Michigan High School Athletic Association and that the following membership resolution, provided by the Michigan High School Athletic Association, be adopted for the year August 1, 2025 through July 31, 2026.

The secondary schools in the Waverly Community School District, City of Lansing, County of Eaton, State of Michigan are hereby:

A. Enrolled as members of the Michigan High School Athletic Association, Inc., a nonprofit association, and

B. Are further enrolled to participate in the approved inter-school athletic activities sponsored by said association.

The Board of Education hereby delegates to the Superintendent or his designee(s) the responsibility for the supervision and control of said activities, and hereby accepts the Constitution and Bylaws of said association and adopts as its own the rules, regulations, and interpretations (as minimum standards), as published in the current Handbook and qualifications as published in the Bulletin as the governing code under which the said schools shall conduct their program of interscholastic activities and agrees to primary enforcement of said rules, regulations, interpretations, and qualifications. In addition, it is hereby agreed that schools which host or participate in the association's meets and tournaments shall follow and enforce all tournament policies, procedures and schedules.

This authorization shall be effective from August 1, 2025 and shall remain effective until July 31, 2026, during which time the authorization may not be revoked.

Background Information:

Through Policy 2431 "the Board further adopts those eligibility standard set by the Constitution of the Michigan High School Athletic Association (MHSAA) and shall review such standards annually to ascertain that they continue to be in conformity with the objectives of this Board."

Rational for Recommendation:

Action is necessary to prevent a lapse in membership and enable the district to participate in league activities.



2025-26

1661 Ramblewood Drive
East Lansing, MI 48823
(517) 332-5046

The Michigan High School Athletic Association is a voluntary, nonprofit corporation comprised of public, private and parochial junior high/ middle and senior high schools whose Boards of Education/Governing Bodies have voluntarily applied for and received membership for and on behalf of their secondary schools. The association sponsors statewide tournaments and makes eligibility rules with respect to participation in such Michigan High School Athletic Association sponsored tournaments in the various sports. Each Board of Education/Governing Body that wishes to host or participate in such meets and tournaments must join the MHSAA and agree to abide by and enforce the MHSAA rules, regulations and qualifications concerning eligibility, game rules and tournament policies, procedures and schedules. **It is a condition for participation in any MHSAA postseason tournaments that high schools adhere to at least the minimum standards of Regulation I and the maximum limitations of Regulation II in ALL MHSAA Tournament sports.**

Michigan High School Athletic Association tournaments are the collective property of the MHSAA and not of any individual member school. The MHSAA reserves the right to promote and advance the membership's interests with publication information; exclusive arrangements to create recognition and exposure for school-sponsored activities; restrictive policies prohibiting exploitation and commercialization of MHSAA-sponsored tournaments; appropriate proprietary interests, and the use of images or transmissions identifying contest officials, spectators and member schools' students, personnel and marks.

To obtain membership, it is necessary for the Board of Education/Governing Body to adopt the following resolution for its junior high/middle and senior high schools. This resolution must be formally ratified by your Board of Education/Governing Body and properly signed. Please return one signed copy for our files and retain one copy for your files. Resolutions that are modified in any way or are supplemented with letters placing additional conditions on MHSAA membership or tournament participation shall be rejected.

MEMBERSHIP RESOLUTION

For the year August 1, 2025 — through July 31, 2026

LIST ON BACK

_____ the School(s) which are under the direction of this Board of Education/Governing Body.

(Junior high/middle and senior high schools of your school system which are to be listed as MHSAA members and receive MHSAA mailings during 2025-26 must be listed on the back of this form)

_____ City/Township of _____

County of _____, of State of Michigan, are hereby:

- (A) enrolled as members of the Michigan High School Athletic Association, Inc., a nonprofit association, and
- (B) are further enrolled to participate in the approved interschool athletic activities sponsored by said association.

The Board of Education/Governing Body hereby delegates to the Superintendent or his/her designee(s) the responsibility for the supervision and control of said activities, and hereby accepts the Constitution and By-Laws of said association and adopts as its own the rules, regulations and interpretations (as minimum standards), as published in the current HANDBOOK as the governing code under which the said school(s) shall conduct its program of interscholastic athletics and agrees to primary enforcement of said rules, regulations, interpretations and qualifications. In addition, it is hereby agreed that schools which host or participate in the association's meets and tournaments shall follow and enforce all tournament policies, procedures and schedules.

This authorization shall be effective from August 1, 2025 and shall remain effective until July 31, 2026, during which the authorization may not be revoked.

RECORD OF ADOPTION

The above resolution was adopted by the Board of Education/Governing Body of the

_____ School(s), on the _____ day of _____, 2025, and is so recorded in the minutes of the meeting of the said Board/Governing Body.

(Governing Body Name)

(Address)

(City & Zip Code)

(Contact E-mail)

Board Secretary Signature
or Designee

Check if Designee

Schools Which Are To Be MHSAA Members During 2025-26

NOTE: Pursuant to the MHSAA Constitution, all high schools, junior high/middle schools, or other schools of Michigan doing a grade of work corresponding to such schools, may become members of this organization provided (a) the school building has enrollment and onsite attendance of at least 15 students, whether for grades **6 through 8 or 9, grades 7 through 8 or 9, or grades 9 or 10 through 12**; and (b) if a nonpublic school, the school qualifies for federal income tax exemption as a not-for-profit organization. To reach the 15-student minimum for middle school membership, schools may join the MHSAA at the 6th-grade level whether or not 6th-grade students participate in athletics.

- A. This Section does not require school districts to become member schools at the junior high/middle school level and does not require school districts to sponsor any interscholastic athletics for 6th-grade students.
- B. If a school district's MHSAA Membership Resolution lists a junior high/middle school as an MHSAA member school, and if the school sponsors a 6th-grade team in any sport or permits a 6th-grade student to participate with 7th- and/or 8th-grade students in any sport, then all of Regulations III and IV apply to all 6th-graders in all sports involving 6th-graders on teams sponsored by that school. If the school does not allow any 6th-graders to participate in a sport, MHSAA rules do not apply in that sport.

Name the Member High School(s)

List separately from JH/MS even if all grades are housed in the same building.

1. _____
2. _____
3. _____
4. _____
5. _____
6. _____
7. _____
8. _____
9. _____
10. _____
11. _____
12. _____
13. _____
14. _____
15. _____

If necessary, list additional schools
for either column on a separate sheet.

Name the Member Junior High /Middle School(s)

(member 6th, 7th and 8th-grade buildings)

List separately from HS even if all grades are housed in the same building.

1. _____

Name of Member School

 Configuration of grades in building (e.g. K-6, 6-8, 7-8, 7-9): _____
 Provide anticipated 2025-26 7th and 8th-grade enrollment _____
 Provide anticipated 2025-26 6th-grade enrollment _____
 Grade levels for membership: 6 7 8

 1. Yes No 6th-graders will be participating in at least one sport with 7th and 8th graders. If yes, and not housed in the same building, add the name of the building that houses 6th-graders on the line below.

2. _____

Name of Member School

 Configuration of grades in building (e.g. K-6, 6-8, 7-8, 7-9): _____
 Provide anticipated 2025-26 7th and 8th-grade enrollment _____
 Provide anticipated 2025-26 6th-grade enrollment _____
 Grade levels for membership: 6 7 8

 1. Yes No 6th-graders will be participating in at least one sport with 7th and 8th graders. If yes, and not housed in the same building, add the name of the building that houses 6th-graders on the line below.

3. _____

Name of Member School

 Configuration of grades in building (e.g. K-6, 6-8, 7-8, 7-9): _____
 Provide anticipated 2025-26 7th and 8th-grade enrollment _____
 Provide anticipated 2025-26 6th-grade enrollment _____
 Grade levels for membership: 6 7 8

 1. Yes No 6th-graders will be participating in at least one sport with 7th and 8th graders. If yes, and not housed in the same building, add the name of the building that houses 6th-graders on the line below.
