

# Agenda of Regular Meeting

## The Board of Education Waverly Community Schools

---

A Regular Meeting of the Board of Education of Waverly Community Schools will be held September 18, 2023, beginning at 6:00 PM in the Board Room, 515 Snow Road, Lansing, MI 48917.

The subjects to be discussed or considered or upon which any formal action may be taken are as listed below. Items do not have to be taken in the order shown on this meeting notice.

Unless removed from the consent agenda, items identified within the consent agenda will be acted on at one time.

- I. Call to Order and Pledge to the Flag - President Alicia Guevara Warren
- II. Correspondence
- III. Public Comment for Agenda Items
- IV. Board Member Comment
- V. Approval of Agenda and Acceptance of all Reports into Discussion

**Recommendation: To request a motion to approve the September 18, 2023 agenda as presented and accept all reports into discussion.**

- VI. Approval of Consent Agenda Items 3

Items listed below may be approved with one motion unless a board member requests that an item or items be removed for separate action.

Regular Board Meeting Minutes - August 21, 2023  
Report #23-17, HR Personnel Recommendations  
Report #23-18, Finance Report

**Recommendation: To request a motion to approve the consent agenda as presented.**

- VII. Presentation of Reports
  - A. Finance & Facilities
    - 1. For Action - Report #23-19, Certification of Winter Tax Levy 16

**Recommendation: To adopt the proposed winter tax levy for the City of Lansing, Delta Township, Lansing**

**Township, Watertown Township and Windsor Town (L-4029 certification) as presented.**

2. For Action - Report #23-20, 2022 Building and Site, Series I/II Construction Award Recommendations 25

**Recommendation: To approve awards to the lowest responsible bidder(s) from Bid Package 5 - Middle School, as presented, in accordance with Board Policy 6320 (Purchasing).**

- VIII. Superintendent's Report
- IX. Public Comment - Open Comment for District Related Items
- X. Other Board Business
- XI. Adjournment

# Minutes of Regular Meeting

## The Board of Trustees Waverly Community Schools

---

### Opening of Meeting

The regular monthly meeting of the Waverly Community Schools Board of Education was held on Monday, August 21, 2023 in the Waverly Board of Education Meeting Room, located at 515 Snow Rd., Lansing, MI 48917. President Guevara Warren called the meeting to order at 6:00 PM. The pledge to the flag was led by Director of Human Resources, Micky Savage.

Members Present:           Alicia Guevara Warren  
                                  Holly Nester  
                                  Vince Perkins  
                                  Deborah Lopez  
                                  Cathy Pike  
                                  Mary Ann Martin  
                                  Amy Krause

Members Absent:           None

Staff Present:             Kelly Blake, Superintendent  
                                  Evan Nuffer, Director of Finance & Facilities  
                                  Shawn Lewis, Director of School Culture  
                                  Tiffany Wright, Director of Student Services  
                                  Micky Savage, Director of Human Resources  
                                  Jon Harpst, Director of IT  
                                  Ann Marie Lindsay  
                                  Tony Terranova  
                                  Molly Francis  
                                  Kysha Crenshaw  
                                  Bernard Colton

### Correspondence:

None

### Public Comment for Agenda Items:

None

### Board Member Comment:

Member Perkins:

- The Welcome Back Breakfast was great, wishing all staff good luck on the first day of school.
- Welcome to Bernard Colton, Waverly new Middle School Principal.
- The Staff Safety presentation was very valuable to all staff.

Member Martin:

- Nice to see all staff at staff breakfast and congratulated those who received service year pins.

Member Lopez:

- Thanked Administration organizing the safety program and the presenter was an expert.

Member Krause:

- The Welcome Back presentation was great and the “band” was a great touch.

Member Pike:

- Excited to see staff happy to be back in the buildings and for the start of the 2023-24 school year.

Member Guevara Warren:

- The Welcome Back Breakfast energy was great to witness and be a part of with everyone.
- Congratulations to all service year pin recipients.
- Welcome to all new staff
- The Safety presentation was very valuable to all staff and well presented for all staff, in all positions.
- The action items from the August Board of Ed PD session will be presented at the September BOE meeting.
- Good luck to staff on the first day of the 2023-24 school year.

### **Approval of Agenda and Acceptance of Reports**

A motion was presented by Member Martin and supported by Member Nester to adopt the August 21, 2023 agenda as presented and accept all reports into discussion.

**Motion PASSED**

**Vote: Ayes – 7; Nays – 0; Absent –0**

### **Approval Consent Agenda Items**

President Guevara noted updated July 31, 2023 closed session minutes were distributed to each board member.

A motion was presented by Member Perkins and supported by Member Lopez to approve the consent agenda as presented, with updated 7/31/23 closed session minutes.

**Motion PASSED**

**Vote: Ayes – 7; Nays – 0; Absent –0**

## **PRESENTATION OF REPORTS**

### **Personnel & Policy**

**For Action – Report #23-15 – Second Reading – Volume 37, No. 2 and Policy 5136, Personal Communication Devices**

A motion was presented by Member Perkins and supported by Member Krause to approve Policies Volume 37, No. 2 and Policy 5136, Personal Communication Devices.

**Motion PASSED**

**Vote: Ayes – 7; Nays – 0; Absent –0**

Finance and Facilities

**For Action – Report #23-16, 2022 Building and Site, Series I High School Renovations (Rebid)**

A motion was presented by Member Martin and supported by Member Lopez to approve awards to the lowest responsible bidder(s) from Bid Package 4 – High School (rebid), including sitework, site concrete, landscaping and gym flooring, in accordance with Board Policy 6320 (Purchasing).

**Motion PASSED**

**Vote: Ayes – 7; Nays – 0; Absent – 0**

**Superintendent’s Report:**

Superintendent Blake:

- Thank you to the Leadership Team for a very successful Back to School Day.
- Thank you to the BOE for attending.
- Shout out to our custodial team for working over the weekend to make sure East Intermediate was ready for staff. There is still projects to complete at East, but it is ready to open for students.
- Construction at the High School is starting.
- New parking patterns (pickup/drop off) at both the High School and Middle School are being implemented so please be patient until all “bugs” are worked out.
- Reminder for the BOE members to be at each building to welcome students back after summer break.

**Public Comment – Open Comment for District Issues**

None

**Other Board Business:**

None

The meeting adjourned at 6:32 pm.

Respectfully submitted,

Vincent Perkins, Secretary  
aml

WAVERLY COMMUNITY SCHOOLS  
BOARD OF EDUCATION REGULAR MEETING  
September 18, 2023

Report #23-17

**Subject: Personnel Report**

**A. Employment – Certified**

<u>Name</u>	<u>Position</u>	<u>Building</u>	<u>Salary</u>	<u>Effective</u>
Colin Christopher	Dean of Students/AD	Middle School	\$75,000	9/25/2023

**B. Employment – Certified**

<u>Name</u>	<u>Position</u>	<u>Building</u>	<u>Salary</u>	<u>Effective</u>
Kamana Taylor	5 <sup>th</sup> Grade Teacher	East Intermediate	MA Step 10/\$69,341	2023-2024
Danine Hancke	ESL Teacher	High School	BA Step 1/\$43,478	2023-2024
Erica Cole	GSRP Teacher	Colt ECEC	BA Step 5/\$51,948	2023-2024
Shaquila Kimbrough	School Social Worker	High School	MA Step 5/\$55,509	8/28/2023
Catherine Duke	Science Teacher	Middle School	MA Step 5/\$55,509	2023-2024

**C. Employment – Non-Certified**

<u>Name</u>	<u>Position</u>	<u>Building</u>	<u>Salary</u>	<u>Effective</u>
Kayla Collett	Food Service FS3	East	\$13.40/hr	8/21/2023
Lauren Ledesma	GSRP Assoc. Para Educator	Colt ECEC	\$18.50/hr	8/28/2023
Carl Bridenbaker	Custodian	Colt ECEC	\$15.00/hr	8/28/2023
David Smith Jr.	Para Educator	High School	\$17.02/hr	9/6/2023
Sharon Martin	Para Educator	Colt ECEC	\$17.02/hr	9/25/2023
Lexie Buskirk	Para Educator	Colt ECEC	\$17.02/hr	9/22/2023

**D. Resignation – Certified**

<u>Name</u>	<u>Position</u>	<u>Building</u>	<u>Effective</u>
Katherine Kuzma	6 <sup>th</sup> Grade Teacher	East Intermediate	8/16/2023
Rosaline Kuiper-Price	Special Ed Teacher	High School	8/17/2023

**E. Resignation – Non-Certified**

<u>Name</u>	<u>Position</u>	<u>Building</u>	<u>Effective</u>
Erin Johnson	Spec Ed Para Educator	Winans Elementary	8/22/2023
Zulfe Sharif	Food Service	Elmwood Elementary	8/28/2023
Laurel Langenberg	Food Service	East Intermediate	8/28/2023
Lauren Ledesma	GSRP Associate Para Educator	Colt ECEC	9/1/2023

**F. Staff Transfer**

<u>Name</u>	<u>From Position</u>	<u>To Position</u>	<u>Effective</u>
Brenda Botello	MS Para Educator	GSRP 3 <sup>rd</sup> Assistant Colt	8/21/2023
Carmen Olger	Preschool Assistant	GSRP 3 <sup>rd</sup> Assistant Colt	8/21/2023
Paula Burton	Preschool Assistant	GSRP 3 <sup>rd</sup> Assistant Colt	8/21/2023
Marla Brown	Elmwood Para Educator	Para Educator Colt	8/21/2023
Melissa Burghdoff	SE Para Educator	GSRP Associate	8/30/2023

**WAVERLY COMMUNITY SCHOOLS  
BOARD OF EDUCATION  
REGULAR BOARD MEETING  
SEPTEMBER 18, 2023**

**Report #23-18**

**FOR ACTION\*\*\***

**Subject:**

Finance Report

**Recommendation:**

The Superintendent recommends the Board of Education review and approve the following report:

**Financial Report:**

The cash balance as of July 31, 2023 was \$6,548,330.67. Receipts during August, consisting of State aid, property taxes and other revenues/transfers-in in the amount of \$3,388,252.71 minus disbursements during August of \$3,778,311.54, left the district with a General Fund cash balance, as of August 31, 2023, of \$6,158,271.84.

2023-24 General Fund expenditures/transfers-out exceed revenues/transfers-in by \$1,936,483. A summary of year to date activity in comparison to the budget is included in the supporting documentation.

2023-24 Student Activity Fund expenditures/transfers-out exceed revenues/transfers-in by \$7,665. A summary of year to date activity in comparison to the budget is included in the supporting documentation.

2023-24 Sinking Fund revenues exceed expenditures by \$74,978. A summary of year to date activity in comparison to the budget is included in the supporting documentation.

2023-24 Public Improvement Fund revenues/transfers-in exceed expenditures/transfers-out by \$6,060. A summary of year to date activity in comparison to the budget is included in the supporting documentation.

The balance of the 2021 Building and Site, Series IV Bonds remaining to be allocated, including \$32,580 of accrued interest, is \$154,888. A summary of life to date activity is included in the supporting documentation

The balance of the 2022 Building and Site, Series I Bonds remaining to be allocated, including \$1,408,850 of accrued interest/change in market value, is \$15,287,660. A summary of life to date activity is included in the supporting documentation

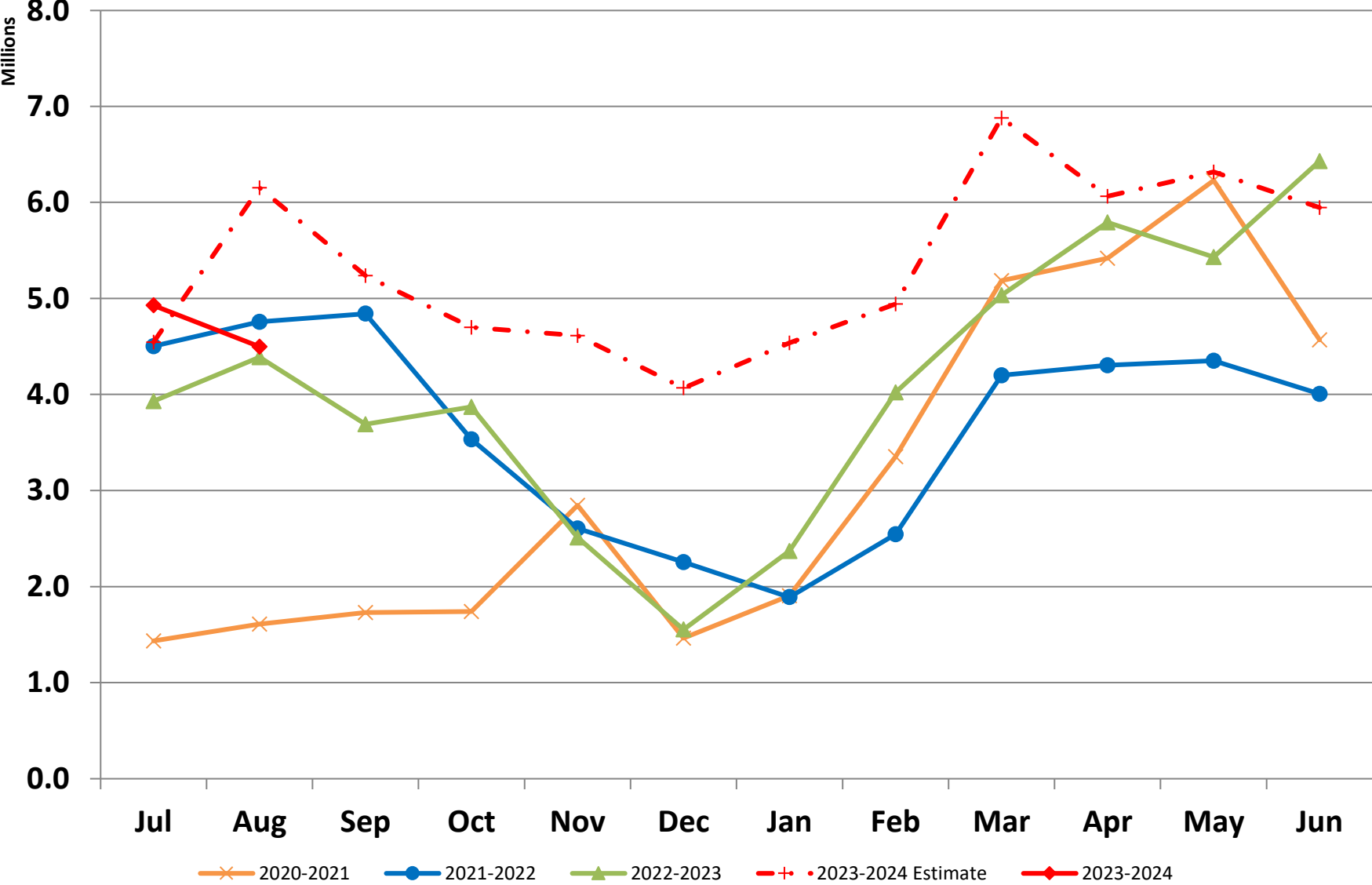
# Waverly Community Schools

## Finance Committee - Cash Position Report

For the Month Ended August 31, 2023

Balance on Hand July 31, 2023	6,548,330.67
Revenues	
State Aid	2,802,885.44
Taxes	415,630.65
Other Revenue	857,596.91
Interfund Transfers In	(687,860.29)
State Aid Note Proceeds	-
	<u>3,388,252.71</u>
Disbursements	
Payroll and Related Liabilities	(2,592,888.59)
Other Expenditures	(1,185,422.95)
State Aid Repayment	-
	<u>(3,778,311.54)</u>
Prior Month Adjustments - August 2023	-
Balance on Hand August 31, 2023	<u><u>6,158,271.84</u></u>
PNC Bank - General	3,386,260.63
MILAF	2,585,953.94
PNC Bank - Payroll	186,057.27
Comerica - Checking	-
	<u><u>6,158,271.84</u></u>
Difference	-

## Waverly Community Schools Cash Flow Analysis (Monthly Lows)



**Waverly Community Schools**  
**General Fund - Budgetary Comparison Schedule**  
**For the Month Ended August 31, 2023**

	Original Budget	Actual	Over (Under) Budget	% Available
<b>Revenue</b>				
Local sources	9,538,439	629,428	(8,909,011)	93.4%
State sources	31,467,600	678,767	(30,788,834)	97.8%
Federal sources	2,571,666	11,102	(2,560,564)	99.6%
Intergovernmental	4,057,720	-	(4,057,720)	100.0%
Transfers In	125,000	-	(125,000)	100.0%
<b>Total revenue</b>	<b>47,760,425</b>	<b>1,319,296</b>	<b>(46,441,129)</b>	<b>97.2%</b>
<b>Expenditures</b>				
Current:				
Instruction:				
Basic program	18,246,155	1,033,988	(17,212,167)	94.3%
Added needs	8,044,082	382,671	(7,661,412)	95.2%
<b>Total instruction</b>	<b>26,290,238</b>	<b>1,416,659</b>	<b>(24,873,579)</b>	<b>94.6%</b>
Support Services:				
Pupil	5,259,270	175,942	(5,083,328)	96.7%
Instructional staff	2,978,182	228,949	(2,749,233)	92.3%
General administration	425,529	109,145	(316,384)	74.4%
School administration	2,996,981	406,310	(2,590,671)	86.4%
Business	591,575	64,303	(527,272)	89.1%
Operations and maintenance	4,239,857	480,459	(3,759,398)	88.7%
Pupil transportation services	1,319,128	83,414	(1,235,714)	93.7%
Central	996,662	201,066	(795,596)	79.8%
Other	277,004	17,791	(259,213)	93.6%
<b>Total support services</b>	<b>19,084,188</b>	<b>1,767,379</b>	<b>(17,316,810)</b>	<b>90.7%</b>
Athletics	751,373	62,106	(689,267)	91.7%
Community services	-	-	-	0.0%
Non Publics	4,665	-	(4,665)	100.0%
Facility Acquisition	-	-	-	0.0%
Debt service:				
Principal	-	-	-	0.0%
Interest	-	-	-	0.0%
Capital outlay	7,500	6,357	(1,143)	15.2%
Payments to other public schools	1,462,424	3,279	(1,459,145)	99.8%
<b>Total expenditures</b>	<b>47,600,388</b>	<b>3,255,779</b>	<b>(44,344,609)</b>	<b>93.2%</b>
Excess of Revenue (Under)Over Expenditures	160,037	(1,936,483)	(2,096,520)	
Transfers Out	1,100,000	-	(1,100,000)	100.0%
Change in Fund Balance	(939,963)	(1,936,483)	(996,520)	
Favorable Expenditure Variance (1.5%)	714,006			
Projected Change in Fund Balance	(225,957)			
Fund Balance - Beginning of year	8,140,076			
Fund Balance - End of year	7,914,119			
	16.6%			

**Waverly Community Schools**  
**Student Activity Fund - Budgetary Comparison Schedule**  
**For the Month Ended August 31, 2023**

	Original Budget	Actual	Over (Under) Budget	% Available
<b>Revenue</b>				
Local sources	172,456	11,957	(160,499)	93.1%
State sources	-	-	-	0.0%
Federal sources	-	-	-	0.0%
Intergovernmental	-	1,000	1,000	0.0%
Transfers In	-	-	-	0.0%
<b>Total revenue</b>	<b>172,456</b>	<b>12,957</b>	<b>(159,499)</b>	<b>92.5%</b>
<b>Expenditures</b>				
Student Activities	108,104	5,553	(102,550)	94.9%
Athletics	58,298	15,068	(43,229)	74.2%
<b>Total expenditures</b>	<b>166,401</b>	<b>20,622</b>	<b>(145,780)</b>	<b>87.6%</b>
Excess of Revenue (Under)Over Expenditures	6,055	(7,665)	(13,720)	
Transfers Out	-	-	-	0.0%
Change in Fund Balance	6,055	(7,665)	(13,720)	
Fund Balance - Beginning of year	300,314			
Fund Balance - End of year	306,369			

**Waverly Community Schools**  
**Sinking Fund - Budgetary Comparison Schedule**  
**For the Month Ended August 31, 2023**

	Original Budget	Actual	Over (Under) Budget	% Available
<b>Revenue</b>				
Local sources	1,053,282	75,048	(978,234)	92.9%
State sources	-	-	-	0.0%
Federal sources	-	-	-	0.0%
Intergovernmental	-	-	-	0.0%
Transfers In	-	-	-	0.0%
<b>Total revenue</b>	<b>1,053,282</b>	<b>75,048</b>	<b>(978,234)</b>	<b>92.9%</b>
<b>Expenditures</b>				
Current:				
Support Services - Business	-	70	70	0.0%
Support Services - Central	-	-	-	0.0%
Facilities Acquisition, Construction and Improvements:				
Site Acquisition Services	-	-	-	0.0%
Site Improvement Services	-	-	-	0.0%
Architecture and Engineering Services	-	-	-	0.0%
Building Acquisition and Construction Services	-	-	-	0.0%
Building Improvement Services	-	-	-	0.0%
Other Acquisition and Construction Services	-	-	-	0.0%
<b>Total expenditures</b>	<b>-</b>	<b>70</b>	<b>70</b>	<b>0.0%</b>
<b>Excess of Revenue (Under)Over Expenditures</b>	1,053,282	74,978	(978,304)	
Transfers Out	-	-	-	
<b>Net Change in Fund Balance</b>	1,053,282	74,978	(978,304)	
<b>Fund Balance - Beginning of year</b>	3,112,919			
<b>Fund Balance - End of year</b>	4,166,201			

**Waverly Community Schools**  
**Public Improvement Fund - Budgetary Comparison Schedule**  
**For the Month Ended August 31, 2023**

	Original Budget	Actual	Over (Under) Budget	% Available
<b>Revenue</b>				
Local sources	50,000	6,060	(43,940)	87.9%
State sources	-	-	-	0.0%
Federal sources	-	-	-	0.0%
Intergovernmental	-	-	-	0.0%
Transfers In	1,100,000	-	-	0.0%
<b>Total revenue</b>	<b>1,150,000</b>	<b>6,060</b>	<b>(43,940)</b>	<b>3.8%</b>
<b>Expenditures</b>				
Current:				
Support Services - Business	-	-	-	0.0%
Support Services - Operations and Maintenance	-	-	-	0.0%
Support Services - Transportation	-	-	-	0.0%
Support Services - Central	-	-	-	0.0%
Facilities Acquisition, Construction and Improvements:				
Site Acquisition Services	-	-	-	0.0%
Site Improvement Services	-	-	-	0.0%
Architecture and Engineering Services	-	-	-	0.0%
Building Acquisition and Construction Services	-	-	-	0.0%
Building Improvement Services	-	-	-	0.0%
Other Acquisition and Construction Services	-	-	-	0.0%
<b>Total expenditures</b>	<b>-</b>	<b>-</b>	<b>-</b>	<b>0.0%</b>
<b>Excess of Revenue (Under)Over Expenditures</b>	1,150,000	6,060	-	
Transfers Out	-	-	-	
<b>Net Change in Fund Balance</b>	1,150,000	6,060	-	
<b>Fund Balance - Beginning of year</b>	2,068,613	2,068,613		
<b>Fund Balance - End of year</b>	3,218,613	2,074,673		

# Waverly Community Schools

## 2021 Building and Site Bonds, Series IV

### Budget Summary

As of August 31, 2023

	Budget	Actual	Encumbered	Balance Remaining
<b>Construction</b>				
Remodeling	2,625,538	1,922,941	542,200	160,397
Site Improvements	-	-	-	-
Technology Infrastructure	-	-	-	-
<b>Construction Base Budget Subtotal</b>	<b>2,625,538</b>	<b>1,922,941</b>	<b>542,200</b>	<b>160,397</b>
<b>Technology Equipment - Contract</b>				
Interactive Classroom	-	-	-	-
Network Equipment	-	663	-	(663)
Wireless Network	-	-	-	-
Phone System	-	750	-	(750)
AV Systems	-	-	-	-
Video Distribution/Video Production	-	-	-	-
<b>Tech Equipment Contract Subtotal</b>	<b>-</b>	<b>1,413</b>	<b>-</b>	<b>(1,413)</b>
<b>Technology Equipment - Owner PO</b>				
Computers/Mobile Devices	507,752	607,191	-	(99,439)
Servers/Backend Systems	-	-	-	-
Printers	-	3,455	-	(3,455)
AV Equipment	-	24,953	2,311	(27,264)
Non-Instructional Equipment (from FFE)	-	-	-	-
<b>Tech Equipment Owner PO Subtotal</b>	<b>507,752</b>	<b>635,599</b>	<b>2,311</b>	<b>(130,157)</b>
<b>District</b>				
Loose Equipment (Furniture & Transportation)	-	5,436	-	(5,436)
Project Contingency	-	-	-	-
Owner GC/Contingency/Issuance Costs	155,116	36,211	-	118,905
Field General Conditions	-	-	-	-
Architect	-	19,988	-	(19,988)
Tech Design/Construction Mgr	146,594	146,594	-	-
<b>District Subtotal</b>	<b>301,710</b>	<b>208,229</b>	<b>-</b>	<b>93,481</b>
<b>Totals</b>	<b>3,435,000</b>	<b>2,768,182</b>	<b>544,510</b>	<b>122,308</b>
Bank Interest/Proceeds				32,580
Total Available				154,888

**Waverly Community Schools**  
**2022 Building and Site Bonds, Series I**  
**Budget Summary**  
**As of August 31, 2023**

	Budget	Actual	Encumbered	Balance Remaining
<b>Construction</b>				
New Construction	-	-	-	-
Remodeling	40,258,077	6,052,848	23,501,133	10,704,096
Site Improvements	3,442,005	2,195,828	3,116,263	(1,870,086)
<b>Construction Base Budget Subtotal</b>	<b>43,700,082</b>	<b>8,248,676</b>	<b>26,617,395</b>	<b>8,834,010</b>
<b>Instructional Technology</b>				
Computers and Mobile Devices	1,468,271	814,443	-	653,828
Audio / Visual	1,797,737	150,753	1,351,450	295,534
<b>Instructional Technology Subtotal</b>	<b>3,266,008</b>	<b>965,196</b>	<b>1,351,450</b>	<b>949,362</b>
<b>Loose Furnishings and Equipment</b>				
Non-Instructional Computers and Mobile Devices	73,904	-	-	73,904
Non-Instructional Audio / Visual	-	-	-	-
Furnishings, Fixtures and Equipment (FF&E)	4,021,389	680,618	26,312	3,314,459
<b>Loose Furnishings and Equipment Subtotal</b>	<b>4,095,293</b>	<b>680,618</b>	<b>26,312</b>	<b>3,388,363</b>
<b>District</b>				
Buses	449,946	-	-	449,946
Contingency	2,872,992	21,180	2,434,266	417,546
Election/Issuance Costs	839,463	712,248	-	127,215
General Conditions	994,618	330,826	646,419	17,373
Architect and Engineering Fees	2,643,715	2,823,401	(225,874)	46,188
A/E Reimbursables	431,821	391,721	107,817	(67,716)
Technology Design	393,305	247,404	145,901	(0)
Construction Mgr	3,050,990	1,913,791	1,137,199	-
<b>District Subtotal</b>	<b>11,676,850</b>	<b>6,440,572</b>	<b>4,245,726</b>	<b>990,552</b>
Bank Interest/Proceeds	(283,477)	(1,408,850)	-	1,125,373
<b>Totals</b>	<b>62,454,756</b>	<b>14,926,212</b>	<b>32,240,884</b>	<b>15,287,660</b>

**WAVERLY COMMUNITY SCHOOLS  
BOARD OF EDUCATION  
REGULAR MEETING  
SEPTEMBER 18, 2023**

**Report #23-19**

**FOR ACTION\*\*\***

**Subject:**

Certification of Winter Tax Levy

**Recommendation:**

The Superintendent recommends the Board of Education adopt the proposed winter tax levy for the City of Lansing, Delta Township, Lansing Township, Watertown Township and Windsor Township. A copy of the certification (L-4029) is included in the support materials.

**Statement of Purpose:**

To certify the tax levy, allowing local taxing units to collect winter taxes for the district.

**Budget Impact:**

If the certification of tax levy is not adopted, taxing units will not collect winter taxes for the school district.

**Historical Perspective:**

Section 380.1213 of Michigan School Code provides that the Secretary of the Board of Education file a certified copy of a resolution adopted by the Board, stating the number of mills to be levied on taxable properties within the school district. This certification is to be filed with the appropriate township(s) and city clerk(s).

A breakdown of the winter tax levy is as follows:

<u>Operating</u>	<u>Rate<sup>(1)</sup></u>	<u>Rate<sup>(2)</sup></u>	<u>Expires</u>
All – Voted (Hold Harmless)	0.9838	2.0949	December 31, 2032
Commercial Personal – Voted	3.9838	8.0949	December 31, 2032
Non-Home – Voted	8.0162	15.9051	December 31, 2032
 <u>2022 Building and Site Debt</u>			
All	3.2000	6.4000	December 31, 2051
 <u>2016 Sinking Fund</u>			
All	0.5000	1.0000	December 31, 2025

<sup>(1)</sup> – City of Lansing, Lansing Township and Delta Township

<sup>(2)</sup> – Watertown Township and Windsor Township

The winter levy for the City of Lansing, Lansing Township and Delta Township is based upon fifty percent (50%) of the total levy.

**Discussion of Options:**

The Board may adopt the recommendation as presented, reject the recommendation or could reduce the amount of any of the above levies. Any reduction in tax levy will result in the loss of revenue for the District.

**Strategic Plan Reference:**

As the heart of the community, our mission is to educate and prepare each student to achieve her or his academic best, develop character, become a life long learner, and contribute as a citizen of our global society.

**INGHAM INTERMEDIATE SCHOOL DISTRICT  
TAXABLE VALUATIONS**

Please Note:

These figures are the ad valorem tax roll.  
They include amounts that will be diverted  
due to TIFA/DDA/LDFA.

**DISTRICT: WAVERLY SCHOOLS**

The Non-Homestead numbers below are for Headlee calculation **only!**  
Different Non-Homestead numbers may be used for property tax bills.

<u>ASSESSMENT UNIT</u>	<u>2022 TAXABLE</u>	<u>2022 LOSSES</u>	<u>2023 ADDITIONS</u>	<u>TOTAL 2023 TAXABLE</u>
<b>Lansing Township</b>	133,719,819	1,323,529	7,041,989	147,979,618
Non-Homestead	64,598,618	307,303	5,482,200	73,533,022
<b>Lansing City-Ingham</b>	2,787,480	395,000	111,300	2,696,652
Non-Homestead	433,586	395,000	109,600	148,235
<b>Watertown Township</b>	76,157,548	493,400	1,781,525	80,841,128
Non-Homestead	51,134,461	0	657,050	54,551,001
<b>Eaton County Total</b>	707,841,695	8,308,686	17,415,801	747,742,090
Non-Homestead	312,981,272	254,044	4,251,393	328,746,432
<b>Delta Township</b>	672,661,794	7,800,568	16,708,350	711,770,126
Non-Homestead	288,422,507	235,144	4,189,993	304,100,296
<b>Windsor Township</b>	35,179,901	508,118	707,451	35,971,964
Non-Homestead	24,558,765	18,900	61,400	24,646,136
<b>TOTAL All Property</b>	920,506,542	10,520,615	26,350,615	979,259,488
<b>Total Non-Homestead</b>	429,147,937	956,347	10,500,243	456,978,690

	<u>All Property</u>		<u>Non-Homestead Property</u>	
Percentage of Overall Increase	6.3827%		6.4851%	
Increase on Existing	4.7169%		4.2707%	
2023 Base Tax Rate Fraction	0.9550	Truth in Taxation	0.9590	Truth in Taxation
2023 Millage Reduction Fraction	1.0304	Headlee	1.0348	Headlee
		<b>(Cap = 1.0000)</b>		<b>(Cap = 1.0000)</b>

**2023 SUMMARY OF ESTIMATED WINTER SINKING FUND LEVY \***

**WAVERLY COMMUNITY SCHOOLS**

**UNITS THAT COLLECT BOTH  
SUMMER & WINTER**

<u>Assessing Unit</u>	<u>2023 Total Taxable Valuation</u>	<u>Total SINKING FUND (One-half year rate) 0.5000</u>
Lansing Township	147,979,618	\$73,989.81
City of Lansing - Ingham	2,696,652	\$1,348.33
Delta Township	711,770,126	\$355,885.06

**UNITS THAT COLLECT  
ONLY IN WINTER**

<u>Assessing Unit</u>	<u>2023 Total Taxable Valuation</u>	<u>Total SINKING FUND (Full year rate) 1.0000</u>
Watertown Township	80,841,128	\$80,841.13
Windsor Township	35,971,964	\$35,971.96
<b>TOTAL WINTER SINKING FUND</b>	<u><u>979,259,488</u></u>	<u><u>\$548,036.29</u></u>

\* Note: This property tax levy information is for SINKING FUND ONLY. Refer to L-4029 for operating levy.

**2023 SUMMARY OF ESTIMATED WINTER DEBT LEVY \***

**WAVERLY COMMUNITY SCHOOLS**

**UNITS THAT COLLECT BOTH  
SUMMER & WINTER**

<u>Assessing Unit</u>	<u>2023 Total Taxable Valuation</u>	<u>2022 Debt (B&amp;S) (2021)</u>	<u>Total Debt (One-half year rate)</u>
		<u>3.2000</u>	<u>3.2000</u>
Lansing Township	147,979,618	\$473,534.78	\$473,534.78
City of Lansing - Ingham	2,696,652	\$8,629.29	\$8,629.29
Delta Township	711,770,126	\$2,277,664.40	\$2,277,664.40

**UNITS THAT COLLECT  
ONLY IN WINTER**

<u>Assessing Unit</u>	<u>2023 Total Taxable Valuation</u>	<u>2022 Debt (B&amp;S) (2021)</u>	<u>Total Debt (Full year rate)</u>
		<u>6.4000</u>	<u>6.4000</u>
Watertown Township	80,841,128	\$517,383.22	\$517,383.22
Windsor Township	35,971,964	\$230,220.57	\$230,220.57
<b>TOTAL WINTER DEBT</b>	<u><u>979,259,488</u></u>	<u><u>\$3,507,432.26</u></u>	<u><u>\$3,507,432.26</u></u>

\* Note: This property tax levy information is for Debt ONLY. Refer to L-4029 for operating levy.

**2023 Tax Rate Request (This form must be completed and submitted on or before September 30, 2023)**

**MILLAGE REQUEST REPORT TO COUNTY BOARD OF COMMISSIONERS**

**Carefully read the instructions on page 2.**

This form is issued under authority of MCL Sections 211.24e, 211.34 and 211.34d. Filing is mandatory; Penalty applies.

County(ies) Where the Local Government Unit Levies Taxes <b>Ingham County - Lansing Township</b>	2023 Taxable Value for ALL Properties in the Unit as of 5-22-23. <b>147,979,618</b>
Local Government Unit Requesting Millage Levy <b>Waverly Community Schools</b>	For LOCAL School Districts: 2023 Taxable Value excluding Principal Residence, Qualified Agricultural, Qualified Forest, Industrial Personal and Commercial Personal Properties. <b>"Not yet known"</b>

**This form must be completed for each unit of government for which a property tax is levied. Penalty for non-filing is provided under MCL Sec 211.119. The following tax rates have been authorized for levy on the 2023 tax roll.**

(1) Source	(2) Purpose of Millage	(3) Date of Election	(4) Original Millage Authorized by Election, Charter, etc.	(5)** 2022 Millage Rate Permanently Reduced by MCL 211.34d "Headlee"	(6) 2023 Current Year "Headlee" Millage Reduction Fraction	(7) 2023 Millage Rate Permanently Reduced by MCL 211.34d "Headlee"	(8) Sec. 211.34 Truth in Assessing or Equalization Millage Rollback Fraction	(9) Maximum Allowable Millage Levy *	(10) Millage Requested to be Levied July 1	(11) Millage Requested to be Levied Dec. 1	(12) Expiration Date of Millage Authorized
Extra Voted	Operating NON-HOME	08/2022	18.4946	18.4946	1.0000	18.4946	1.0000	18.4946	7.8889	8.0162	12/2032
Hold Harmless Extra Voted	Operating ALL	08/2022	9.3000	9.3000	1.0000	9.3000	1.0000	9.3000	1.1111	0.9838	12/2032
Extra Voted	2022 Debt DEBT-ALL	05/2021	6.4000	N/A	1.0000	N/A	1.0000	6.4000	3.2000	3.2000	12/2051
Extra Voted	Sinking Fund ALL	03/2016	1.0000	1.0000	1.0000	1.0000	1.0000	1.0000	0.5000	0.5000	12/2025

Prepared by <b>Andrew Dravland</b>	Telephone Number <b>(517) 244-4515</b>	Title of Preparer <b>Director of Business Operations, Ingham ISD</b>	Date <b>09/05/23</b>
---------------------------------------	---	---	-------------------------

**CERTIFICATION:** As the representatives for the local government unit named above, we certify that these requested tax levy rates have been reduced, if necessary to comply with the state constitution (Article 9, Section 31), and that the requested levy rates have also been reduced, if necessary, to comply with MCL Sections 211.24e, 211.34 and, for LOCAL school districts which levy a Supplemental (Hold Harmless) Millage, 380.1211(3).

<input type="checkbox"/> Clerk	Signature	Print Name	Date
<input checked="" type="checkbox"/> Secretary			
<input type="checkbox"/> Chairperson	Signature	Print Name	Date
<input checked="" type="checkbox"/> President			

\* Under Truth in Taxation, MCL Section 211.24e, the governing body may decide to levy a rate which will not exceed the maximum authorized rate allowed in column 9. The requirements of MCL 211.24e must be met prior to levying an operating levy which is larger than the base tax rate but not larger than the rate in column 9.

\*\* **IMPORTANT:** See instructions on page 2 regarding where to find the millage rate used in column (5).

Local School District Use Only. Complete if requesting millage to be levied. See STC Bulletin 2 of 2023 for instructions on completing this section.	
Total School District Operating Rates to be Levied (HH/Supp and NH Oper ONLY)	<b>Rate ***</b>
For Principal Residence, Qualified Ag, Qualified Forest and Industrial Personal	0.9838
For Commercial Personal	3.9838
For all Other	9.0000

**\*\*\* FOR DECEMBER 1 LEV**

**2023 Tax Rate Request (This form must be completed and submitted on or before September 30, 2023)**

**MILLAGE REQUEST REPORT TO COUNTY BOARD OF COMMISSIONERS**

**Carefully read the instructions on page 2.**

This form is issued under authority of MCL Sections 211.24e, 211.34 and 211.34d. Filing is mandatory; Penalty applies.

County(ies) Where the Local Government Unit Levies Taxes <b>Ingham County - City of Lansing</b>	2023 Taxable Value for ALL Properties in the Unit as of 5-22-23. <b>2,696,652</b>
Local Government Unit Requesting Millage Levy <b>Waverly Community Schools</b>	For LOCAL School Districts: 2023 Taxable Value excluding Principal Residence, Qualified Agricultural, Qualified Forest, Industrial Personal and Commercial Personal Properties. <b>"Not yet known"</b>

**This form must be completed for each unit of government for which a property tax is levied. Penalty for non-filing is provided under MCL Sec 211.119. The following tax rates have been authorized for levy on the 2023 tax roll.**

(1) Source	(2) Purpose of Millage	(3) Date of Election	(4) Original Millage Authorized by Election, Charter, etc.	(5)** 2022 Millage Rate Permanently Reduced by MCL 211.34d "Headlee"	(6) 2023 Current Year "Headlee" Millage Reduction Fraction	(7) 2023 Millage Rate Permanently Reduced by MCL 211.34d "Headlee"	(8) Sec. 211.34 Truth in Assessing or Equalization Millage Rollback Fraction	(9) Maximum Allowable Millage Levy *	(10) Millage Requested to be Levied July 1	(11) Millage Requested to be Levied Dec. 1	(12) Expiration Date of Millage Authorized
Extra Voted	Operating NON-HOME	08/2022	18.4946	18.4946	1.0000	18.4946	1.0000	18.4946	7.8889	8.0162	12/2032
Hold Harmless Extra Voted	Operating ALL	08/2022	9.3000	9.3000	1.0000	9.3000	1.0000	9.3000	1.1111	0.9838	12/2032
Extra Voted	2022 Debt DEBT-ALL	05/2021	6.4000	N/A	1.0000	N/A	1.0000	6.4000	3.2000	3.2000	12/2051
Extra Voted	Sinking Fund ALL	03/2016	1.0000	1.0000	1.0000	1.0000	1.0000	1.0000	0.5000	0.5000	12/2025

Prepared by <b>Andrew Dravland</b>	Telephone Number <b>(517) 244-4515</b>	Title of Preparer <b>Director of Business Operations, Ingham ISD</b>	Date <b>09/05/23</b>
---------------------------------------	---	---	-------------------------

**CERTIFICATION:** As the representatives for the local government unit named above, we certify that these requested tax levy rates have been reduced, if necessary to comply with the state constitution (Article 9, Section 31), and that the requested levy rates have also been reduced, if necessary, to comply with MCL Sections 211.24e, 211.34 and, for LOCAL school districts which levy a Supplemental (Hold Harmless) Millage, 380.1211(3).

<input type="checkbox"/> Clerk	Signature	Print Name	Date
<input checked="" type="checkbox"/> Secretary			
<input type="checkbox"/> Chairperson	Signature	Print Name	Date
<input checked="" type="checkbox"/> President			

\* Under Truth in Taxation, MCL Section 211.24e, the governing body may decide to levy a rate which will not exceed the maximum authorized rate allowed in column 9. The requirements of MCL 211.24e must be met prior to levying an operating levy which is larger than the base tax rate but not larger than the rate in column 9.

\*\* **IMPORTANT:** See instructions on page 2 regarding where to find the millage rate used in column (5).

Local School District Use Only. Complete if requesting millage to be levied. See STC Bulletin 2 of 2023 for instructions on completing this section.	
Total School District Operating Rates to be Levied (HH/Supp and NH Oper ONLY)	<b>Rate ***</b>
For Principal Residence, Qualified Ag, Qualified Forest and Industrial Personal	0.9838
For Commercial Personal	3.9838
For all Other	9.0000

**\*\*\* FOR DECEMBER 1 LEV**

**2023 Tax Rate Request (This form must be completed and submitted on or before September 30, 2023)**

**MILLAGE REQUEST REPORT TO COUNTY BOARD OF COMMISSIONERS**

**Carefully read the instructions on page 2.**

This form is issued under authority of MCL Sections 211.24e, 211.34 and 211.34d. Filing is mandatory; Penalty applies.

County(ies) Where the Local Government Unit Levies Taxes <b>Eaton County - Delta Township</b>	2023 Taxable Value for ALL Properties in the Unit as of 5-22-23. <b>711,770,126</b>
Local Government Unit Requesting Millage Levy <b>Waverly Community Schools</b>	For LOCAL School Districts: 2023 Taxable Value excluding Principal Residence, Qualified Agricultural, Qualified Forest, Industrial Personal and Commercial Personal Properties. <b>"Not yet known"</b>

**This form must be completed for each unit of government for which a property tax is levied. Penalty for non-filing is provided under MCL Sec 211.119. The following tax rates have been authorized for levy on the 2023 tax roll.**

(1) Source	(2) Purpose of Millage	(3) Date of Election	(4) Original Millage Authorized by Election, Charter, etc.	(5)** 2022 Millage Rate Permanently Reduced by MCL 211.34d "Headlee"	(6) 2023 Current Year "Headlee" Millage Reduction Fraction	(7) 2023 Millage Rate Permanently Reduced by MCL 211.34d "Headlee"	(8) Sec. 211.34 Truth in Assessing or Equalization Millage Rollback Fraction	(9) Maximum Allowable Millage Levy *	(10) Millage Requested to be Levied July 1	(11) Millage Requested to be Levied Dec. 1	(12) Expiration Date of Millage Authorized
Extra Voted	Operating NON-HOME	08/2022	18.4946	18.4946	1.0000	18.4946	1.0000	18.4946	7.8889	8.0162	12/2032
Hold Harmless Extra Voted	Operating ALL	08/2022	9.3000	9.3000	1.0000	9.3000	1.0000	9.3000	1.1111	0.9838	12/2032
Extra Voted	2022 Debt DEBT-ALL	05/2021	6.4000	N/A	1.0000	N/A	1.0000	6.4000	3.2000	3.2000	12/2051
Extra Voted	Sinking Fund ALL	03/2016	1.0000	1.0000	1.0000	1.0000	1.0000	1.0000	0.5000	0.5000	12/2025

Prepared by <b>Andrew Dravland</b>	Telephone Number <b>(517) 244-4515</b>	Title of Preparer <b>Director of Business Operations, Ingham ISD</b>	Date <b>09/05/23</b>
---------------------------------------	---	---	-------------------------

**CERTIFICATION:** As the representatives for the local government unit named above, we certify that these requested tax levy rates have been reduced, if necessary to comply with the state constitution (Article 9, Section 31), and that the requested levy rates have also been reduced, if necessary, to comply with MCL Sections 211.24e, 211.34 and, for LOCAL school districts which levy a Supplemental (Hold Harmless) Millage, 380.1211(3).

<input type="checkbox"/> Clerk	Signature	Print Name	Date
<input checked="" type="checkbox"/> Secretary			
<input type="checkbox"/> Chairperson	Signature	Print Name	Date
<input checked="" type="checkbox"/> President			

\* Under Truth in Taxation, MCL Section 211.24e, the governing body may decide to levy a rate which will not exceed the maximum authorized rate allowed in column 9. The requirements of MCL 211.24e must be met prior to levying an operating levy which is larger than the base tax rate but not larger than the rate in column 9.

\*\* **IMPORTANT:** See instructions on page 2 regarding where to find the millage rate used in column (5).

Local School District Use Only. Complete if requesting millage to be levied. See STC Bulletin 2 of 2023 for instructions on completing this section.	
Total School District Operating Rates to be Levied (HH/Supp and NH Oper ONLY)	<b>Rate ***</b>
For Principal Residence, Qualified Ag, Qualified Forest and Industrial Personal	0.9838
For Commercial Personal	3.9838
For all Other	9.0000

**\*\*\* FOR DECEMBER 1 LEV**

**2023 Tax Rate Request (This form must be completed and submitted on or before September 30, 2023)**

**MILLAGE REQUEST REPORT TO COUNTY BOARD OF COMMISSIONERS**

**Carefully read the instructions on page 2.**

This form is issued under authority of MCL Sections 211.24e, 211.34 and 211.34d. Filing is mandatory; Penalty applies.

County(ies) Where the Local Government Unit Levies Taxes <b>Eaton County - Windsor Township</b>	2023 Taxable Value for ALL Properties in the Unit as of 5-22-23. <b>35,971,964</b>
Local Government Unit Requesting Millage Levy <b>Waverly Community Schools</b>	For LOCAL School Districts: 2023 Taxable Value excluding Principal Residence, Qualified Agricultural, Qualified Forest, Industrial Personal and Commercial Personal Properties. <b>"Not yet known"</b>

**This form must be completed for each unit of government for which a property tax is levied. Penalty for non-filing is provided under MCL Sec 211.119. The following tax rates have been authorized for levy on the 2023 tax roll.**

(1) Source	(2) Purpose of Millage	(3) Date of Election	(4) Original Millage Authorized by Election, Charter, etc.	(5)** 2022 Millage Rate Permanently Reduced by MCL 211.34d "Headlee"	(6) 2023 Current Year "Headlee" Millage Reduction Fraction	(7) 2023 Millage Rate Permanently Reduced by MCL 211.34d "Headlee"	(8) Sec. 211.34 Truth in Assessing or Equalization Millage Rollback Fraction	(9) Maximum Allowable Millage Levy *	(10) Millage Requested to be Levied July 1	(11) Millage Requested to be Levied Dec. 1	(12) Expiration Date of Millage Authorized
Extra Voted	Operating NON-HOME	08/2022	18.4946	18.4946	1.0000	18.4946	1.0000	18.4946		15.9051	12/2032
Hold Harmless Extra Voted	Operating ALL	08/2022	9.3000	9.3000	1.0000	9.3000	1.0000	9.3000		2.0949	12/2032
Extra Voted	2022 Debt DEBT-ALL	05/2021	6.4000	N/A	1.0000	N/A	1.0000	6.4000		6.4000	12/2051
Extra Voted	Sinking Fund ALL	03/2016	1.0000	1.0000	1.0000	1.0000	1.0000	1.0000		1.0000	12/2025

Prepared by <b>Andrew Dravland</b>	Telephone Number <b>(517) 244-4515</b>	Title of Preparer <b>Director of Business Operations, Ingham ISD</b>	Date <b>09/05/23</b>
---------------------------------------	---	---	-------------------------

**CERTIFICATION:** As the representatives for the local government unit named above, we certify that these requested tax levy rates have been reduced, if necessary to comply with the state constitution (Article 9, Section 31), and that the requested levy rates have also been reduced, if necessary, to comply with MCL Sections 211.24e, 211.34 and, for LOCAL school districts which levy a Supplemental (Hold Harmless) Millage, 380.1211(3).

<input type="checkbox"/> Clerk	Signature	Print Name	Date
<input checked="" type="checkbox"/> Secretary			
<input type="checkbox"/> Chairperson	Signature	Print Name	Date
<input checked="" type="checkbox"/> President			

\* Under Truth in Taxation, MCL Section 211.24e, the governing body may decide to levy a rate which will not exceed the maximum authorized rate allowed in column 9. The requirements of MCL 211.24e must be met prior to levying an operating levy which is larger than the base tax rate but not larger than the rate in column 9.

\*\* **IMPORTANT:** See instructions on page 2 regarding where to find the millage rate used in column (5).

Local School District Use Only. Complete if requesting millage to be levied. See STC Bulletin 2 of 2023 for instructions on completing this section.	
Total School District Operating Rates to be Levied (HH/Supp and NH Oper ONLY)	<b>Rate ***</b>
For Principal Residence, Qualified Ag, Qualified Forest and Industrial Personal	2.0949
For Commercial Personal	8.0949
For all Other	18.0000

\*\*\* **FOR DECEMBER 1 LEV**

**2023 Tax Rate Request (This form must be completed and submitted on or before September 30, 2023)**

**MILLAGE REQUEST REPORT TO COUNTY BOARD OF COMMISSIONERS**

**Carefully read the instructions on page 2.**

This form is issued under authority of MCL Sections 211.24e, 211.34 and 211.34d. Filing is mandatory; Penalty applies.

County(ies) Where the Local Government Unit Levies Taxes <b>Clinton County - Watertown Twp.</b>	2023 Taxable Value for ALL Properties in the Unit as of 5-22-23. <b>80,841,128</b>
Local Government Unit Requesting Millage Levy <b>Waverly Community Schools</b>	For LOCAL School Districts: 2023 Taxable Value excluding Principal Residence, Qualified Agricultural, Qualified Forest, Industrial Personal and Commercial Personal Properties. <b>"Not yet known"</b>

**This form must be completed for each unit of government for which a property tax is levied. Penalty for non-filing is provided under MCL Sec 211.119. The following tax rates have been authorized for levy on the 2023 tax roll.**

(1) Source	(2) Purpose of Millage	(3) Date of Election	(4) Original Millage Authorized by Election, Charter, etc.	(5)** 2022 Millage Rate Permanently Reduced by MCL 211.34d "Headlee"	(6) 2023 Current Year "Headlee" Millage Reduction Fraction	(7) 2023 Millage Rate Permanently Reduced by MCL 211.34d "Headlee"	(8) Sec. 211.34 Truth in Assessing or Equalization Millage Rollback Fraction	(9) Maximum Allowable Millage Levy *	(10) Millage Requested to be Levied July 1	(11) Millage Requested to be Levied Dec. 1	(12) Expiration Date of Millage Authorized
Extra Voted	Operating NON-HOME	08/2022	18.4946	18.4946	1.0000	18.4946	1.0000	18.4946		15.9051	12/2032
Hold Harmless Extra Voted	Operating ALL	08/2022	9.3000	9.3000	1.0000	9.3000	1.0000	9.3000		2.0949	12/2032
Extra Voted	2022 Debt DEBT-ALL	05/2021	6.4000	N/A	1.0000	N/A	1.0000	6.4000		6.4000	12/2051
Extra Voted	Sinking Fund ALL	03/2016	1.0000	1.0000	1.0000	1.0000	1.0000	1.0000		1.0000	12/2025

Prepared by <b>Andrew Dravland</b>	Telephone Number <b>(517) 244-4515</b>	Title of Preparer <b>Director of Business Operations, Ingham ISD</b>	Date <b>09/05/23</b>
---------------------------------------	---	---	-------------------------

**CERTIFICATION:** As the representatives for the local government unit named above, we certify that these requested tax levy rates have been reduced, if necessary to comply with the state constitution (Article 9, Section 31), and that the requested levy rates have also been reduced, if necessary, to comply with MCL Sections 211.24e, 211.34 and, for LOCAL school districts which levy a Supplemental (Hold Harmless) Millage, 380.1211(3).

Local School District Use Only. Complete if requesting millage to be levied. See STC Bulletin 2 of 2023 for instructions on completing this section.

<input type="checkbox"/> Clerk	Signature	Print Name	Date
<input checked="" type="checkbox"/> Secretary			
<input type="checkbox"/> Chairperson	Signature	Print Name	Date
<input checked="" type="checkbox"/> President			

Total School District Operating Rates to be Levied (HH/Supp and NH Oper ONLY)	Rate ***
For Principal Residence, Qualified Ag, Qualified Forest and Industrial Personal	2.0949
For Commercial Personal	8.0949
For all Other	18.0000

\* Under Truth in Taxation, MCL Section 211.24e, the governing body may decide to levy a rate which will not exceed the maximum authorized rate allowed in column 9. The requirements of MCL 211.24e must be met prior to levying an operating levy which is larger than the base tax rate but not larger than the rate in column 9.

\*\* **IMPORTANT:** See instructions on page 2 regarding where to find the millage rate used in column (5).

**WAVERLY COMMUNITY SCHOOLS  
BOARD OF EDUCATION  
REGULAR BOARD MEETING  
SEPTEMBER 18, 2023**

**Report #23-20**

**FOR ACTION**

**Subject:**

2022 Building and Site, Series I/II Construction Award Recommendations

**Recommendation:**

The Superintendent recommends the Board of Education approve awards to the lowest responsible bidder(s) from Bid Package 5 – Middle School, as per the attached summary, in accordance with Board Policy 6320 (Purchasing).

**Statement of Purpose:**

The purpose of the Bid Package 5 – Middle School was to receive competitive pricing for renovations including mechanical, electrical and finish upgrades throughout the building.

**Background Information:**

On May 4, 2021 a special election was held for the purpose of proposing a ballot question to authorize Waverly Community Schools to borrow the sum of \$125,000,000 and issue its general obligation unlimited tax bonds therefor, in one or more series for the purpose of erecting additions to, remodeling, including security improvements to, furnishing and refurbishing, and equipping and re-equipping school buildings; acquiring and installing instructional technology and instructional technology equipment for school buildings; purchasing school buses; and developing, equipping and improving playgrounds, play fields, athletic fields, parking areas and sites. The ballot proposal having received sufficient votes was approved.

The 2022 Building and Site Bid Package 5 – Middle School was released with responses due on Tuesday, August 22, 2023. A summary of the bid responses is attached for reference. Satisfactory post bid interviews were conducted with the apparent low bidder(s) to ensure compliance with bid specifications.

**Budget Impact:**

The total cost of this recommendation is Twenty-Two Million Fourteen Thousand Nine Hundred Twenty-Five and 00/100 Dollars (\$22,014,925.00), including contingency and general conditions. The contracts will be funded by the proceeds from the 2022 Building and Site, Series I and Series II bonds in addition to \$1.5 million proceeds from the Sinking Fund. This recommendation is within the amount of \$22,349,790.00 budgeted for this project.

**Discussion of Options:**

The Board may entertain a motion to take one of the following actions:

- 1) Accept all bid recommendations, as presented
- 2) Accept or reject each bid individually with a separate motion for each bid category
- 3) Reject all the bids, and reissue a new Invitation to Bid
- 4) Table the recommendation for further discussion



September 7, 2023

Mr. Evan Nuffer  
 Director, Finance and Operations  
 Waverly Community Schools  
 515 Snow Rd.  
 Lansing, Michigan 48917

RE: Waverly Middle School Renovations

Dear Mr. Nuffer,

Bid documents were issued for Waverly Middle School Renovations. This work includes mechanical, electrical, and architectural, and major renovations throughout the entire building. In addition to contacting known interested bidders, bids were advertised on the state bid website, in the local newspaper, and with Barton Malow’s online planroom. Bids were received and publicly read August 22, 2023.

**Bid Evaluation Summary and Recommendations**

The attached bid tabulation indicates the bid pricing received. After a review of the bid proposals received, post bid interviews were conducted with the low bidders to verify the proposal was inclusive of the scope of work and schedule.

Based upon the evaluation of the project team we present the following companies for consideration by the administration and Board of Education:

Bid Package Name	Vendor Name	TOTAL AWARD WITH ALTERNATES
Demolition	Blue Star	\$603,475
Concrete	Moore Trospen Construction	\$374,300
Masonry	Schiffer Mason Contractors	\$626,000
Steel	Dobson Industrial, Inc	\$558,800
General Trades	Graham Construction	\$1,542,926
Roofing	Quality Roofing	\$1,194,053
Metal Panels	JD Candler	\$724,000
Aluminum Storefront & Glazing	Aaron Glass Co.	\$1,141,000
Ceilings & Drywall	Clark Construction	\$1,416,150
Flooring	Superior Floor Covering	\$497,691
Tile	Superior Floor Covering	\$165,750
Paint	Classic Painting Co	\$211,500
Food Service	Great Lakes West	\$387,093
Fire Suppression	Brigade Fire Protection	\$274,820
Mechanical	Advantage Mechanical	\$4,602,200
Mechanical Controls	SC Technologies	\$286,588
Electrical	Superior Electric	\$3,661,000
Sitework	ET Mackenzie Company	\$553,370
Asphalt Paving	Tomco Asphalt	\$415,000
Landscaping	DJs Landscape Management	\$160,156
Site Concrete	Moore Trospen Construction	\$392,825
	<b>BID TOTALS WITH ALTERNATES</b>	<b>\$19,788,697</b>
	General Conditions at 2.25%	\$445,246
	Contingency at 9%	\$1,780,983
	<b>GRAND AWARD TOTAL</b>	<b>\$22,014,925</b>

Ten bid alternates were included with the bidding documents. All of the bid alternates were accepted and included with the contract award numbers above. A description of the alternates follows:

## ALTERNATES

ALTERNATE 001:	BASE BID INCLUDES REMEDIATION OF THE PARKING LOT. AS A DEDUCT ALTERNATE, AT THE PARKING LOT PROVIDE MILL AND FILL.
ALTERNATE 002:	REPLACE DOMESTIC COLD, HOT AND HOT WATER RETURN MAINS, REFER TO ALTERNATE PLUMBING SHEETS FOR LOCATIONS AND SIZES
ALTERNATE 003:	REPLACE EMERGENCY LIGHTING BATTERIES WITH A CENTRAL INVERTER.
ALTERNATE 004:	REPLACE THE EXISTING PRECAST AGGREGATE PANELS AND WOOD SIDING FASCIA PANELS WITH NEW METAL PANELS.
ALTERNATE 005:	REPLACE THE FOUR EXISTING SKYLIGHTS WITH NEW AND ADD FOUR ADDITIONAL SKYLIGHTS AS SHOWN IN UNIT B OVER CORRIDORS B106 AND B125. EXISTING SKYLIGHT CURBS TO BE REINFORCED AS REQUIRED TO SUPPORT REPLACEMENT SKYLIGHTS.
ALTERNATE 006:	IMPROVE LIGHTING AT PARKING LOTS (NORTH LOT, WALKWAY TO HS, AND SOUTH LOT).
ALTERNATE 007:	PROVIDE NEW DUCTWORK, LIGHTING AND CEILINGS IN THE ADMINISTRATION OFFICES. EXISTING CEILING MOUNTED EQUIPMENT TO BE REMOVED AND STORED FOR REINSTALLATION. NEW RTUs ARE PART OF BASE BID.
ALTERNATE 008:	RUN (2) 1" CONDUITS FOR FUTURE EV CHARGERS.
ALTERNATE 009:	BASE BID INCLUDES LEAVING F106 AS A GRAY BOX FOR USE AS STORAGE SPACE AND INCLUDES DOOR F106A FROM LOCKER ROOM. ADD ALTERNATE IS FOR IMPROVEMENTS TO F106 FOR USE AS TEAM ROOM (FLOOR STRUCTURE, FINISHES, DOOR FROM CORRIDOR, LIGHTING AND HVAC).
ALTERNATE 010:	BASE BID MAINTAINS EXISTING LOCKERS MODIFY AS REQUIRED FOR NEW CONSTRUCTION. REPLACE EXISTING LOCKERS WITH NEW WHERE INDICATED.

Upon approval by the Board of Education, Barton Malow will issue a contract to the approved bidder. If you have any questions, please call me at (586) 524-1396.

Sincerely,



Eric Sifferman  
Project Manager  
Barton Malow Builders

# WAVERLY COMMUNITY SCHOOLS: Waverly Middle

Bid Package Name	Vendor Name	Base Bid	ALT 1	ALT 2	ALT 3	ALT 4	ALT 5	ALT 6	ALT 7	ALT 8	ALT 9	ALT 10	RFI 127	TOTAL WITH ALTERNATES	Comments
Demolition	Blue Star, Inc.	\$579,000							\$2,000		\$9,500	\$12,975		\$603,475	
Demolition	Asbestos Abatement Inc.	\$628,826							\$1,750			\$21,250		\$651,826	
Demolition	Reese Contracting, Inc.	\$735,000										\$12,000		\$747,000	
Demolition	Christman Constructors, Inc.	\$799,300							\$2,300			\$37,300		\$838,900	
Demolition	Trumble Group	\$1,183,000							\$2,500			\$14,000		\$1,199,500	
Concrete	Moore Trospier Construction	\$368,300										\$6,000		\$374,300	
Concrete	Granger Construction	\$395,000										\$21,500		\$416,500	
Masonry	Schiffer Mason Contractors	\$626,000												\$626,000	
Masonry	BNE	\$700,000												\$700,000	
Masonry	Davenport Masonry	\$710,000												\$710,000	
Steel	Dobson Industrial, Inc.	\$507,210					\$51,590							\$558,800	
Steel	Howard Structural Steel	\$572,543					\$84,924							\$657,467	
Steel	Eagle Enterprise of Michigan	\$598,850					\$55,825							\$654,675	
Steel	Lapeer Steel, Inc.	\$904,800					\$147,486							\$1,052,286	
General Trades	Graham Construction	\$1,326,023									\$19,140	\$207,862	(\$10,100)	\$1,542,926	
General Trades	Moore Trospier Construction	\$1,367,000									\$15,200	\$204,200		\$1,586,400	
General Trades	Clark Contracting Services	\$1,382,700									\$30,000	\$220,000	\$28,000	\$1,660,700	
General Trades	Trumble Group	\$1,400,000					\$8,500				\$17,000	\$245,000	(\$25,000)	\$1,645,500	
General Trades	Dobie Construction, Inc.	\$1,438,500									\$26,000	\$222,000	(\$10,000)	\$1,676,500	
General Trades	Granger Construction Company	\$1,655,000									\$22,000	\$188,000		\$1,865,000	
Roofing	Quality Roofing	\$1,185,053				\$5,000	\$4,000							\$1,194,053	
Roofing	Roofing Innovations	\$1,291,190					\$8,985							\$1,300,175	
Roofing	D/BCI	\$1,527,142												\$1,527,142	
Roofing	Great Lakes Systems	\$1,586,967					\$23,858							\$1,610,825	
Roofing	MTD Construction Inc	\$1,587,995												\$1,587,995	
Roofing	Superior Services	\$1,894,107												\$1,894,107	
Roofing	Hoekstra Roofing Company	\$2,064,300					\$30,000							\$2,094,300	
Roofing	Versatile Roofing Systems	\$3,290,200												\$3,290,200	
Metal Panels	JD Candler Roofing Company	\$609,000				\$115,000								\$724,000	
Metal Panels	Liberty Sheet Metal	\$787,000				\$127,000								\$914,000	
Metal Panels	Foco Metal Works	\$1,169,900				\$101,000								\$1,270,900	
Alum Storm & Glaz	Aaron Glass Company	\$917,000					\$224,000							\$1,141,000	
Alum Storm & Glaz	Lansing Glass Company	\$989,929					\$205,000							\$1,194,929	
Alum Storm & Glaz	Traverse City Glass	\$1,152,660					\$289,238							\$1,441,898	
Ceilings & Drywall	Clark Contracting Services	\$1,351,900				\$7,500	\$44,000		\$12,750					\$1,416,150	
Ceilings & Drywall	Grand River Interiors	\$1,385,000					\$27,000		\$11,300					\$1,423,300	
Ceilings & Drywall	Integrity Interiors, Inc	\$1,435,312					\$15,062		\$13,955					\$1,464,329	
Ceilings & Drywall	William Reichenbach Company	\$1,495,000					\$127,000		\$18,800					\$1,640,800	
Flooring	Niles Construction Services	\$258,347												\$258,347	Painting bid submitted in flooring category
Flooring	William Reichenbach Company	\$491,000									\$4,100			\$495,100	Bid Incomplete - Withdrawn by Bidder
Flooring	Superior Floor Coverings LLC	\$494,721									\$2,970			\$497,691	
Flooring	Lansing Tile & Mosaic	\$505,000									\$3,100			\$508,100	
Flooring	DF Floor Covering	\$510,083									\$3,390			\$513,473	
Flooring	Integrity Interiors, Inc	\$534,300									\$4,675			\$538,975	
Flooring	Shock Brothers Floorcovering	\$562,500									\$3,950			\$566,450	
Flooring	Master Craft Carpet Service													\$0	Bid Not Read: Missing Documents
Tile	Superior Floor Coverings LLC	\$165,750												\$165,750	
Tile	DF Floor Covering	\$206,559												\$206,559	
Tile	Integrity Interiors, Inc	\$246,000												\$246,000	
Tile	Master Craft Carpet Service, Inc.													\$0	Bid Not Read: Missing Documents
Paint	Classic Painting Company, Inc.	\$209,500									\$2,000			\$211,500	

