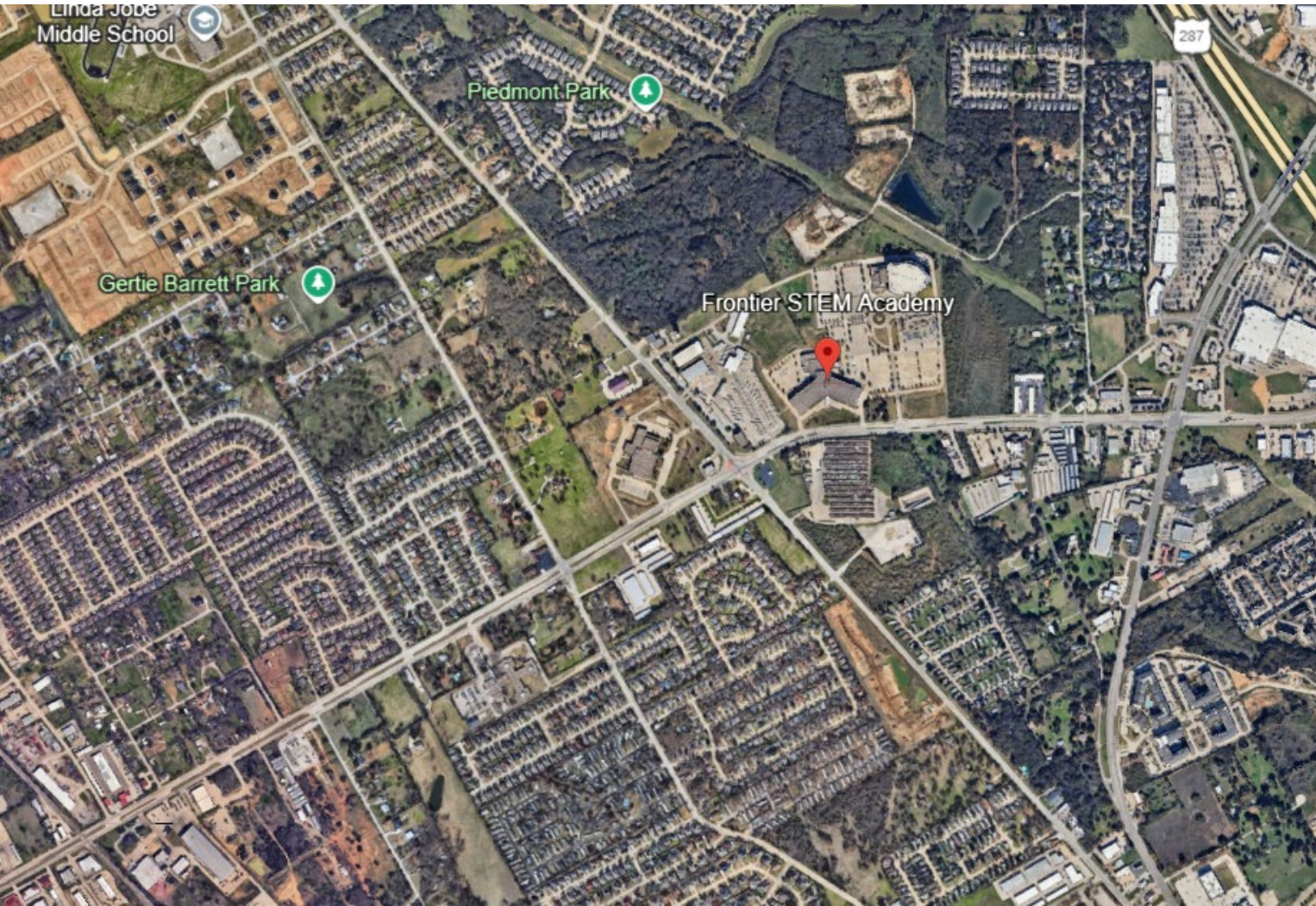


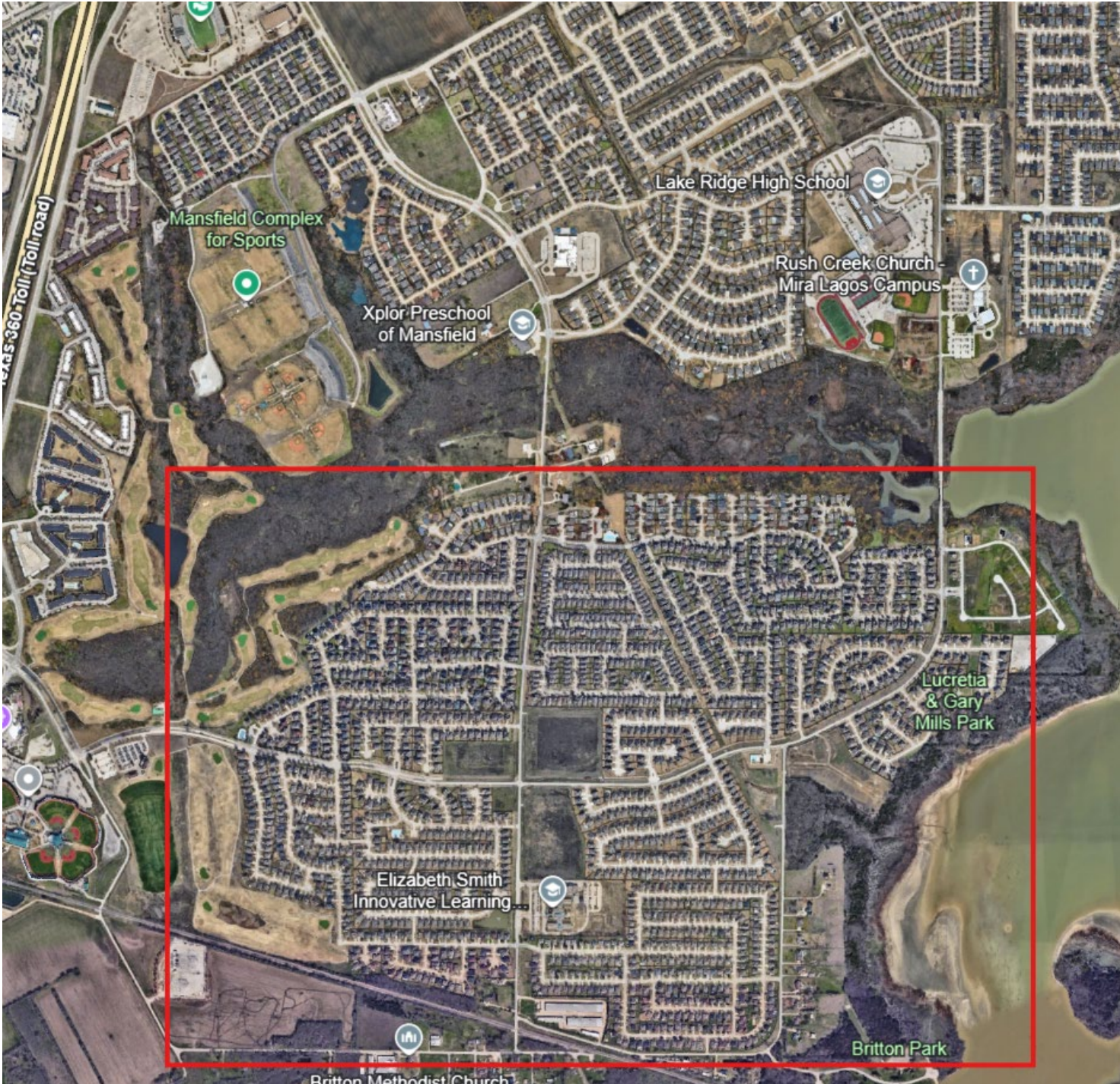
# Hazardous Walk Zones Summary



## Frontier High School

West of Main St., South of Debbie, and East of the School.

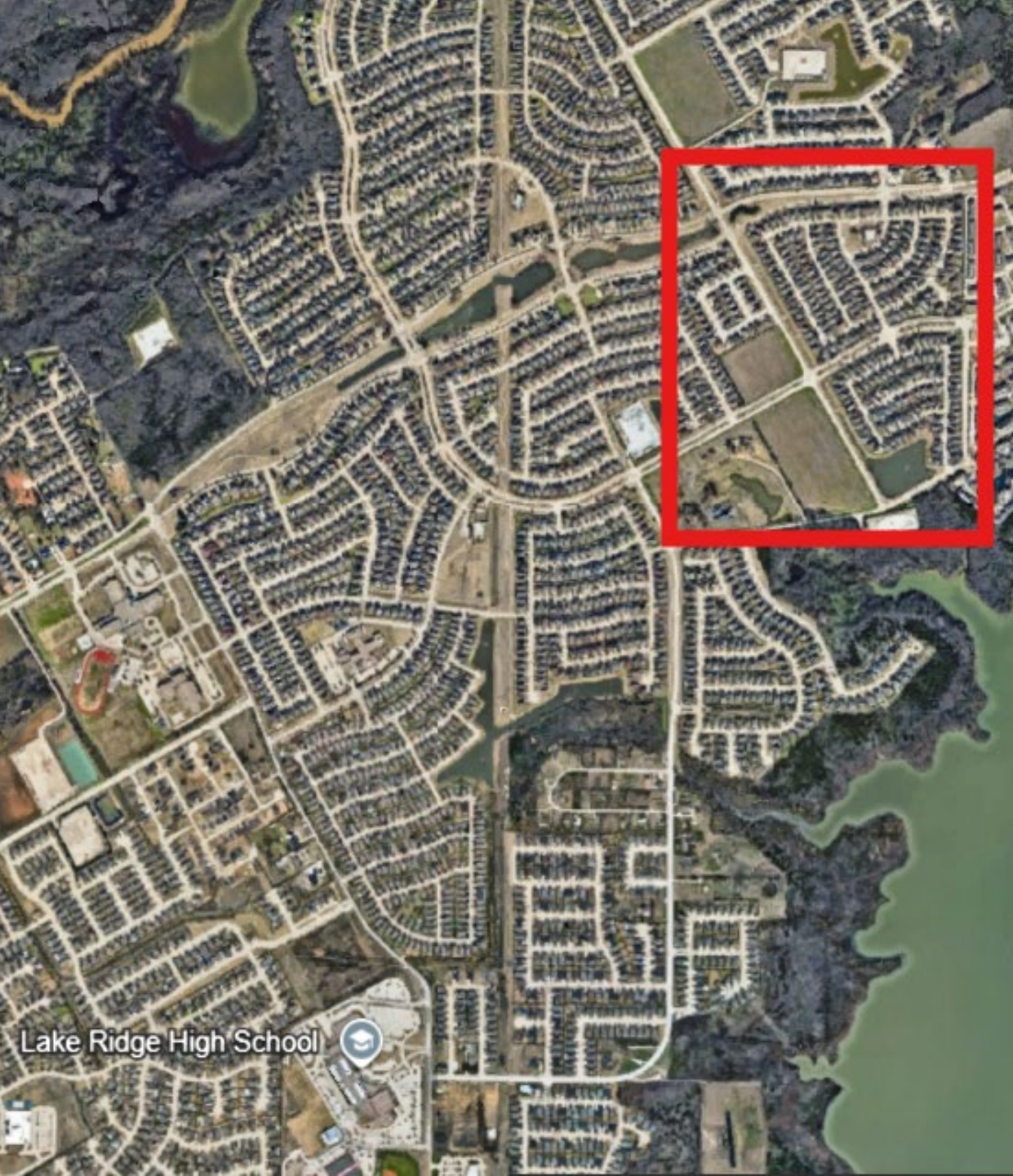
Qualifies due to the absence of sidewalks to the campus.



## Lake Ridge High School

Neighborhood South of Seeton Rd. on Day Miar Rd.

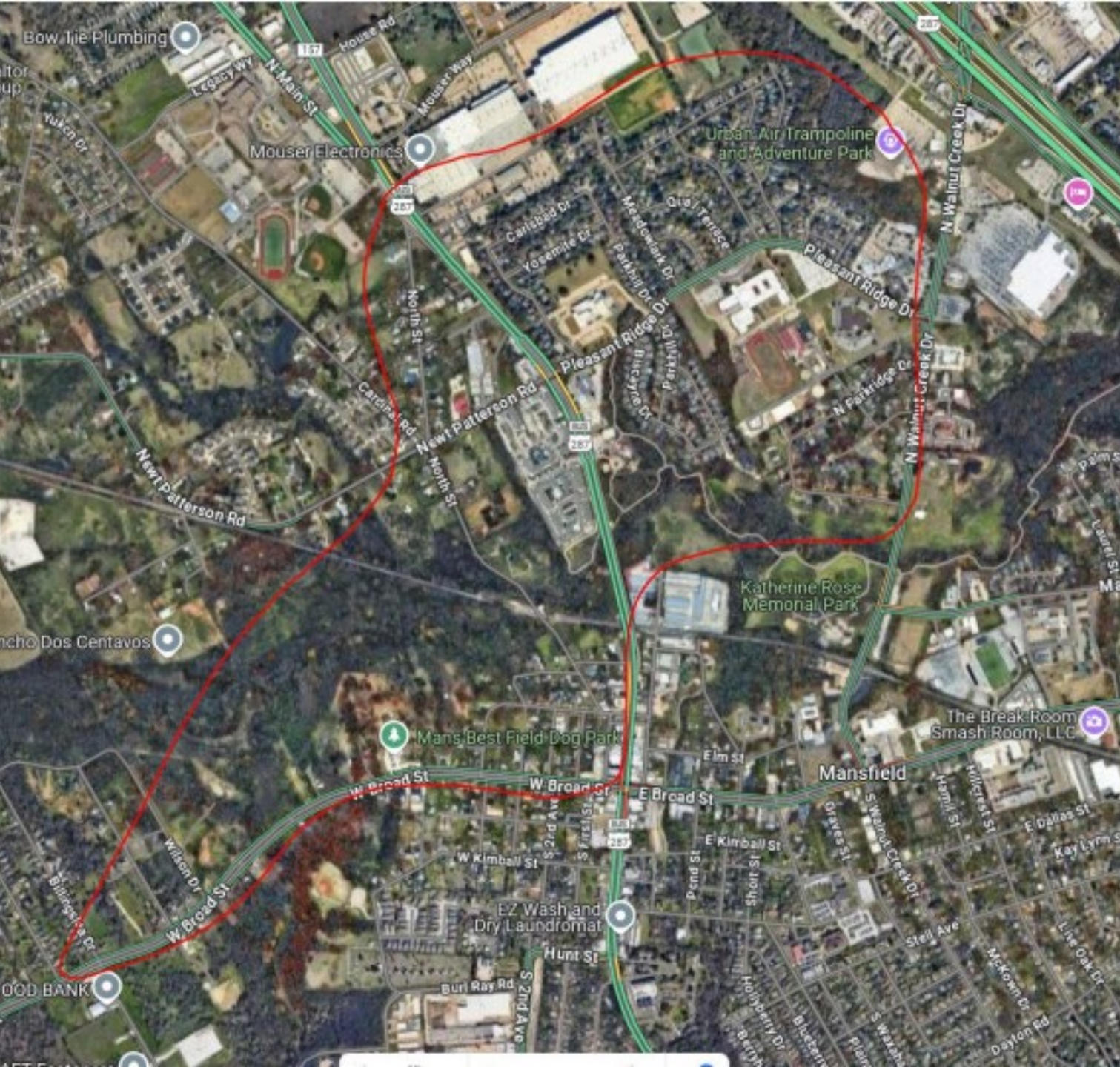
Qualifies due to the absence of sidewalks and thoroughfares on a bridge over Joe Pool Lake.



## Lake Ridge High School

Neighborhood East of Arlington Webb Britton Rd.

Qualifies due to the absence of sidewalks on Seeton Rd., east to Arlington Webb Britton Rd.



## Legacy High School

Sections north and south of Main St.

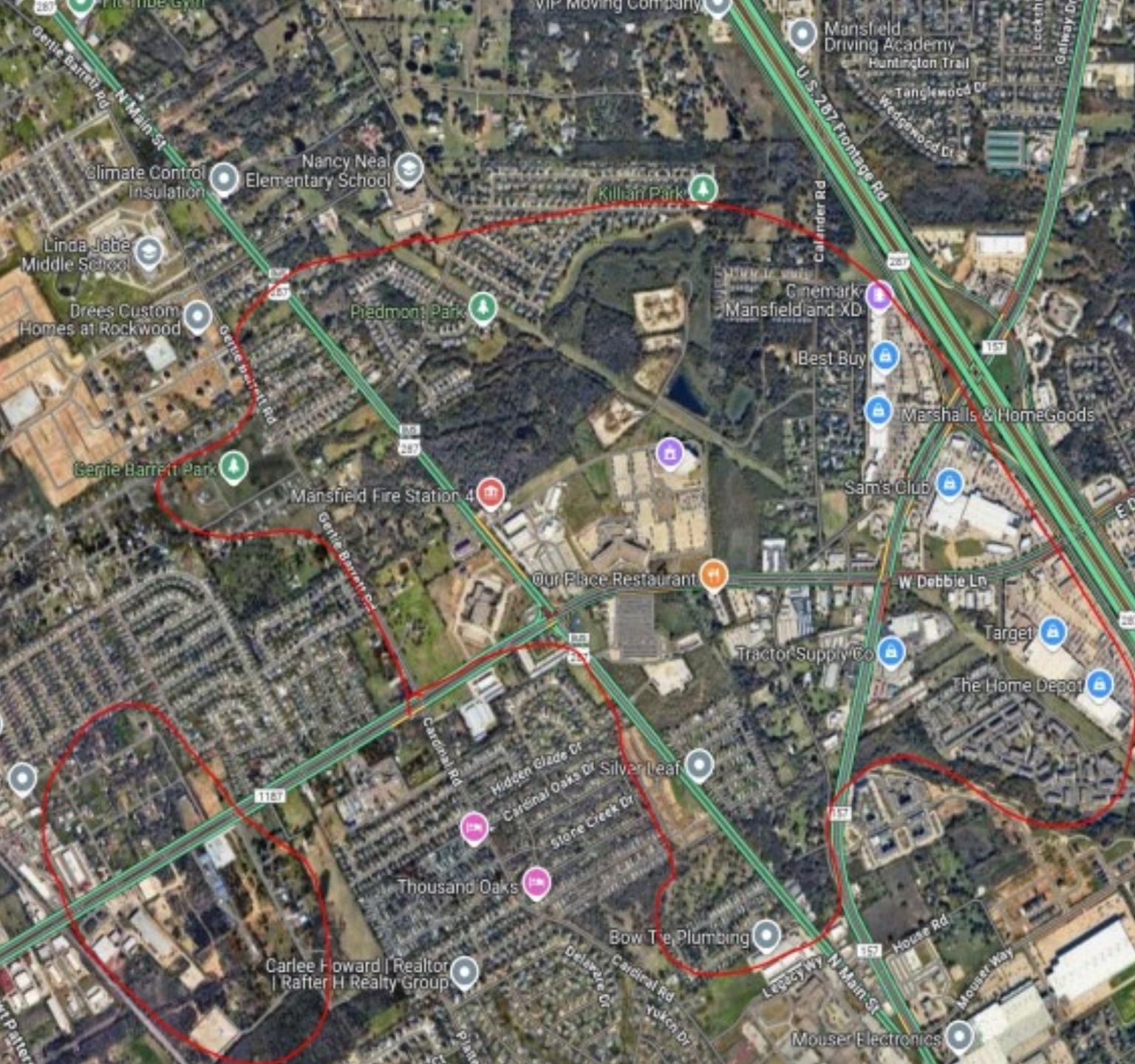
Qualifies due to the absence of sidewalks down Main St. and Cardinal Rd.



## Legacy High School

South on Cardinal Rd.

Qualifies due to the absence of sidewalks on Cardinal Rd.

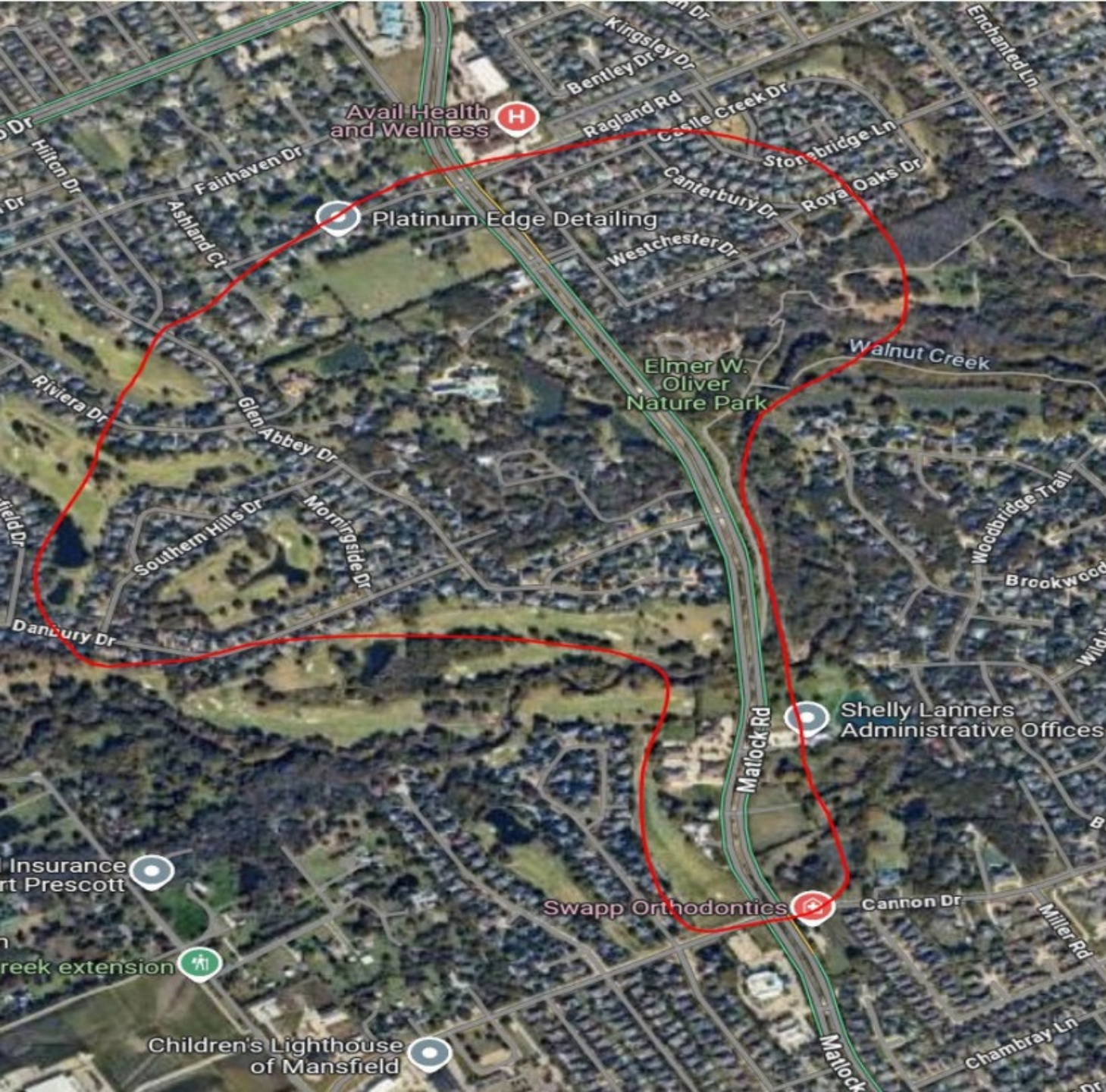


## Legacy High School

Sections north and south of Debbie Ln. on FM 157

Qualifies due to:

- The sidewalk ends at Hyview St. going West.
- There is an absence of sidewalks north and south on N Main St.
- There is an absence of sidewalks north and south on FM 157.



## Mansfield High School

North of Cannon on Matlock Rd.

Qualifies due to the absence of sidewalk access consistently down Matlock.



## Summit High School

- East of Tin Cup Dr. on Harris

Qualifies due to the absence of sidewalks.  
Harris remains hazardous due to the absence of a safe path or sidewalks.

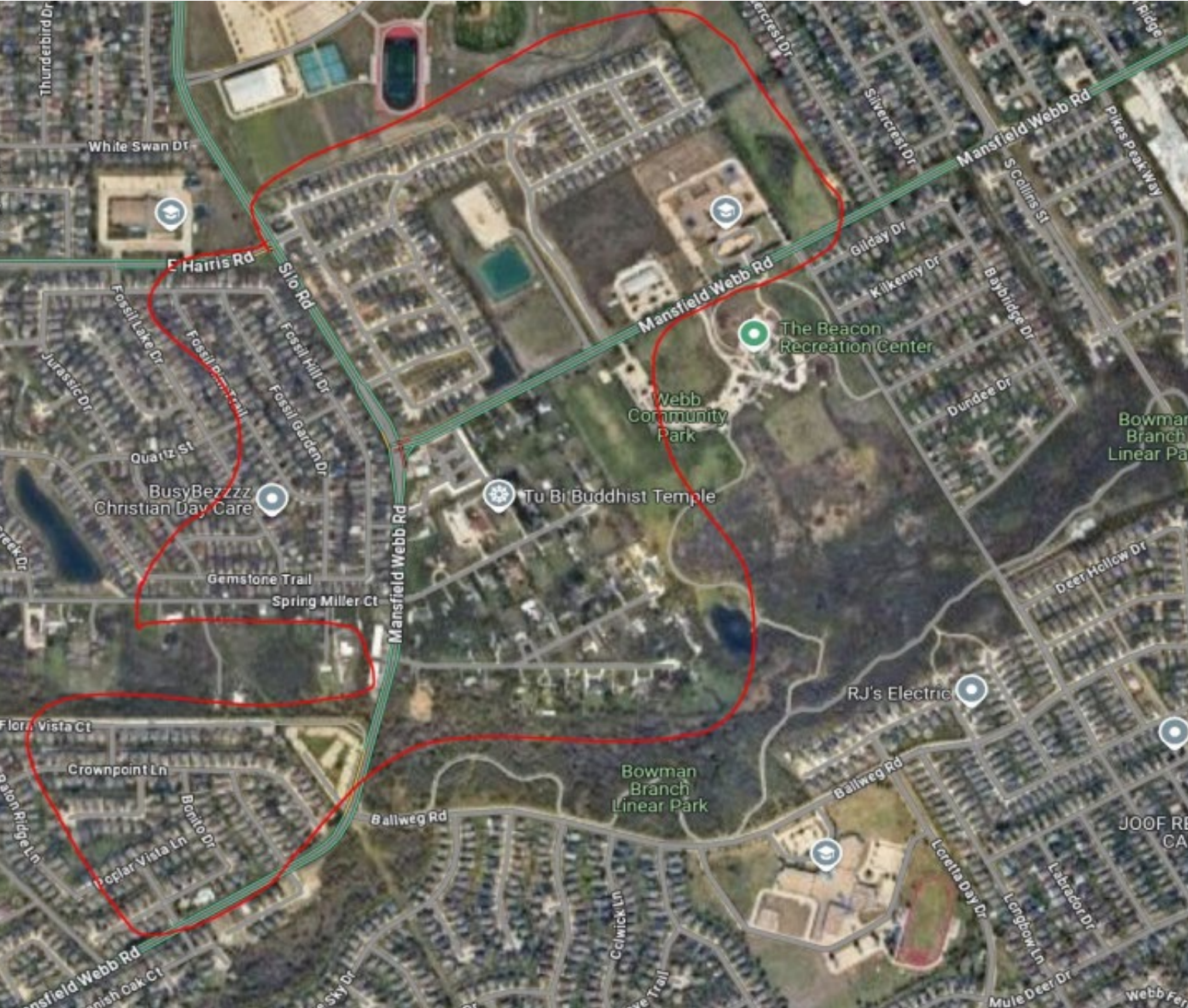


## Timberview High School

East of Pikes Peak Way on Mansfield Webb Rd.

Qualifies due to the absence of sidewalks and students walking on Hwy 360.

*Will be reassessed after completion of Mansfield Webb Rd construction project 26-27*



## Timberview High School

West of Webb Ferrell Rd. on Mansfield Webb Rd.

Qualifies due to the absence of sidewalks on Mansfield Webb Rd.

*Will be reassessed after completion of Mansfield Webb Rd construction project 26-27.*



## James Coble Middle School

North and West of Mansfield Webb Rd.

Qualifies due to the absence of sidewalks.

*\* Will be reassessed after completion of Mansfield Webb Rd construction project 26-27.*

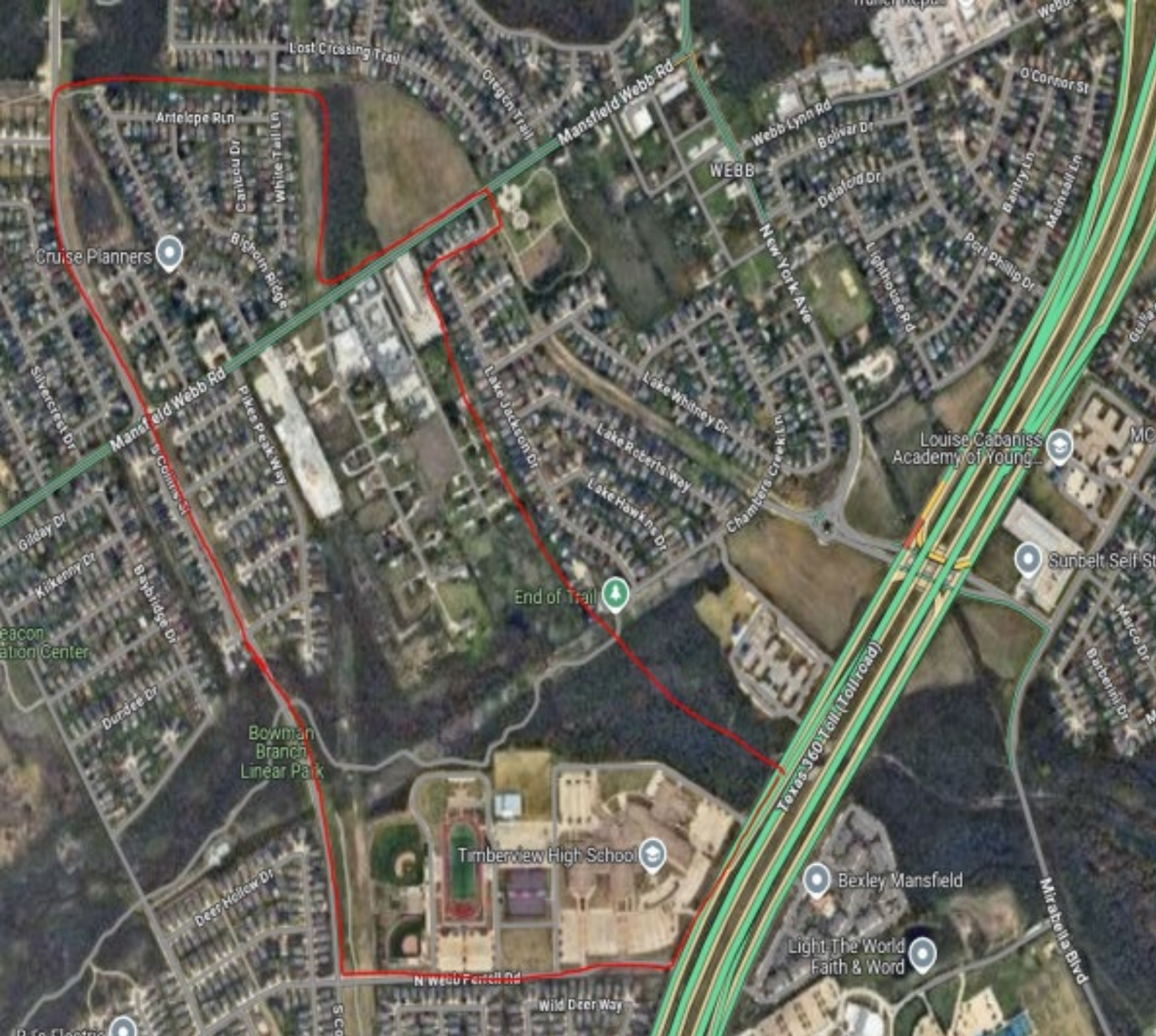


## James Coble Middle School

West of Tabasco Trl. on Debbie Ln.

Qualifies due to the absence of sidewalks access.

*\*Current construction project on Debbie Ln.*



## James Coble Middle School

East of Collins Rd on Mansfield Webb Rd.

Qualifies due to the absence of sidewalks on Mansfield Webb Rd.

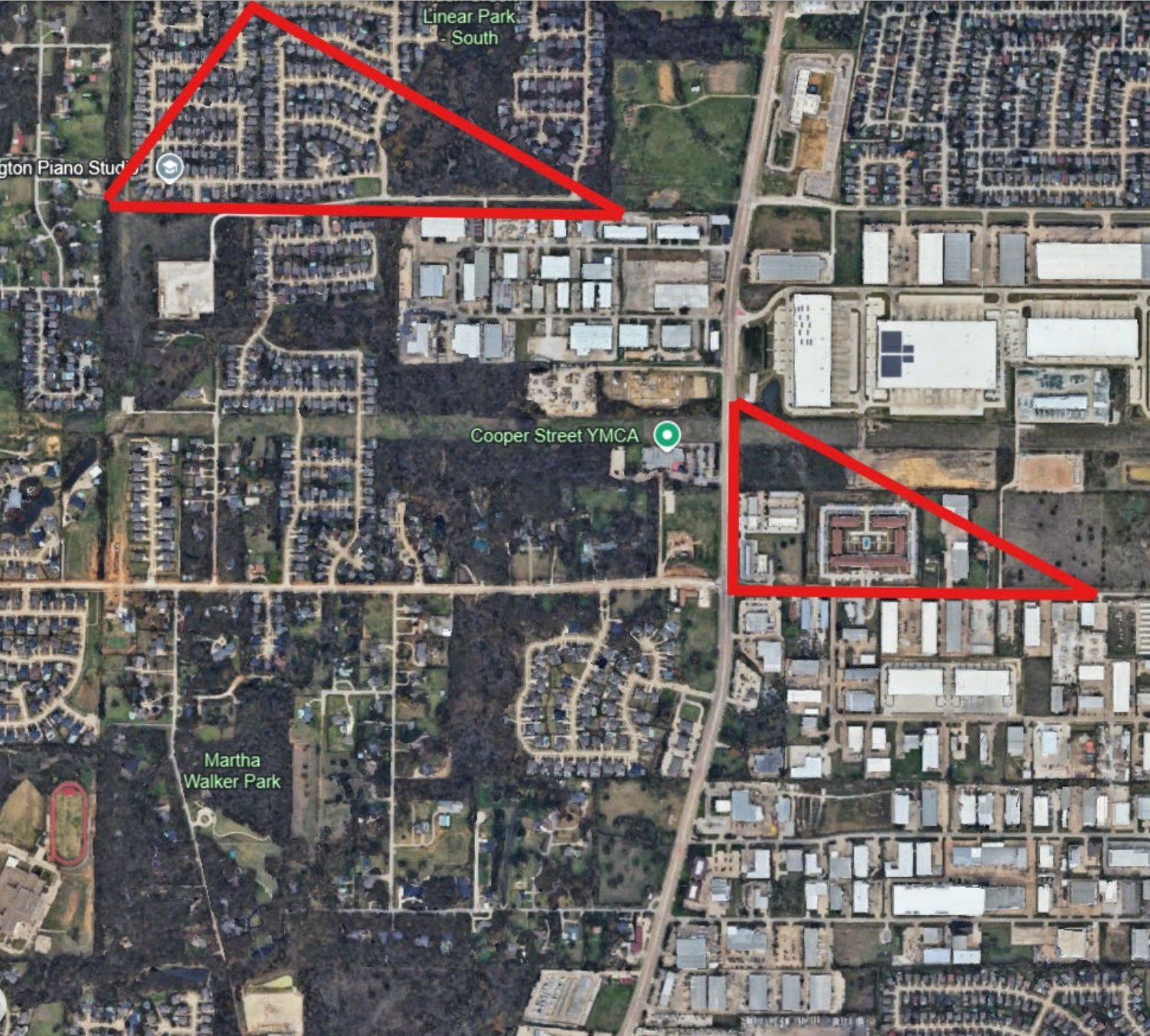
*\*Collins St. areas will be reassessed after completion of Mansfield Webb Rd construction project 26-27.*



## **T.A. Howard Middle School**

All areas on Russell Curry Rd.

Qualifies due to the absence of sidewalks.



## T.A. Howard Middle School

North of Eden Rd. on Fox Glenn

Qualifies due to crossing FM 157 and due to the absence of sidewalk access between neighborhoods on Eden Rd.



**Linda Jobe Middle School**

North of the campus on Gertie Barrett Rd.

Qualifies due to the absence of sidewalks.



## Danny Jones Middle School

East of Arlington Webb Britton Rd.

Qualifies due to lack of sidewalks on Seaton Rd. to Arlington Webb Britton Rd.



## Charlene McKinzey Middle School

West of Hwy 287

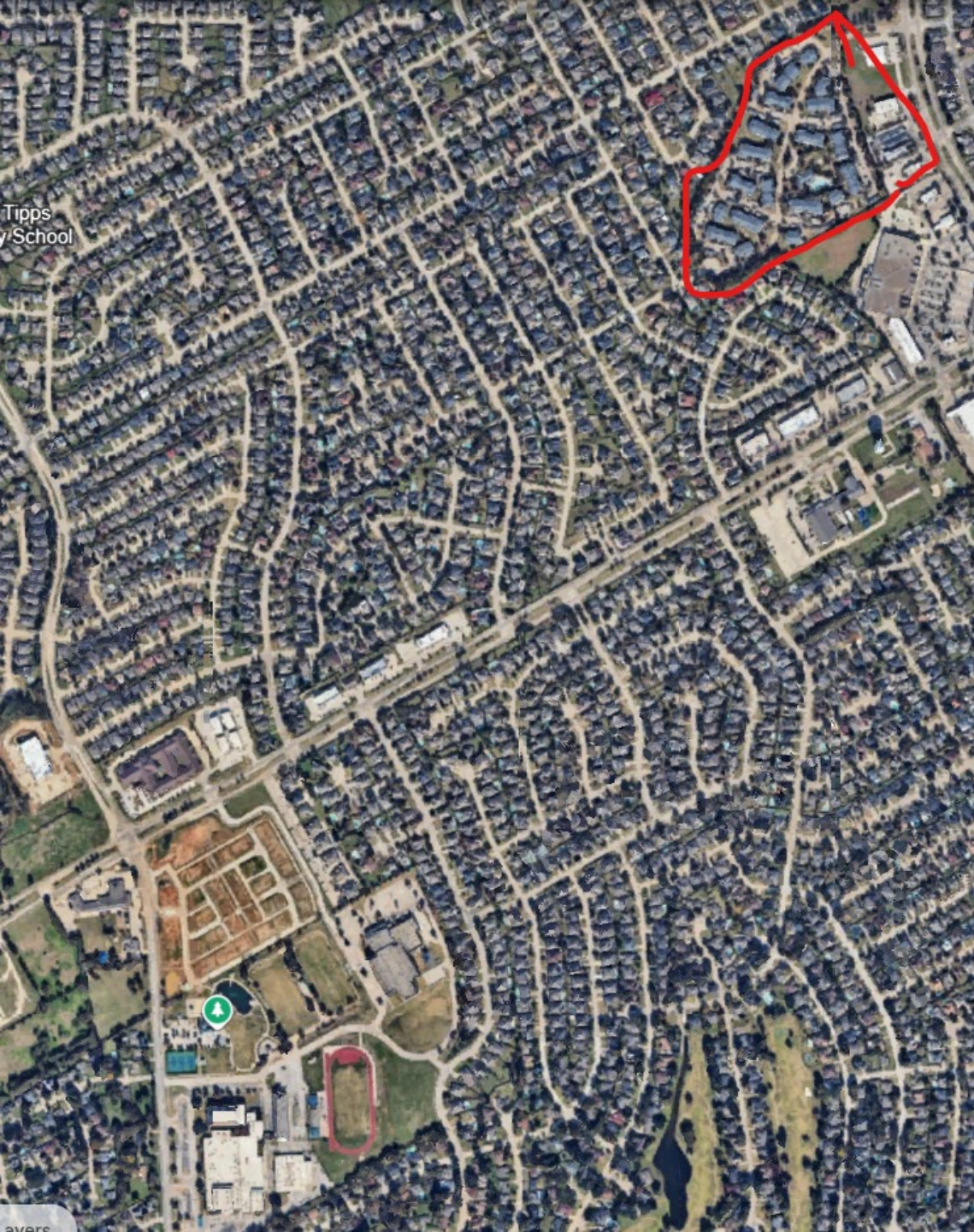
Qualifies due to crossing Hwy 287.



## Brooks Wester Middle School

South of Country Club Dr.

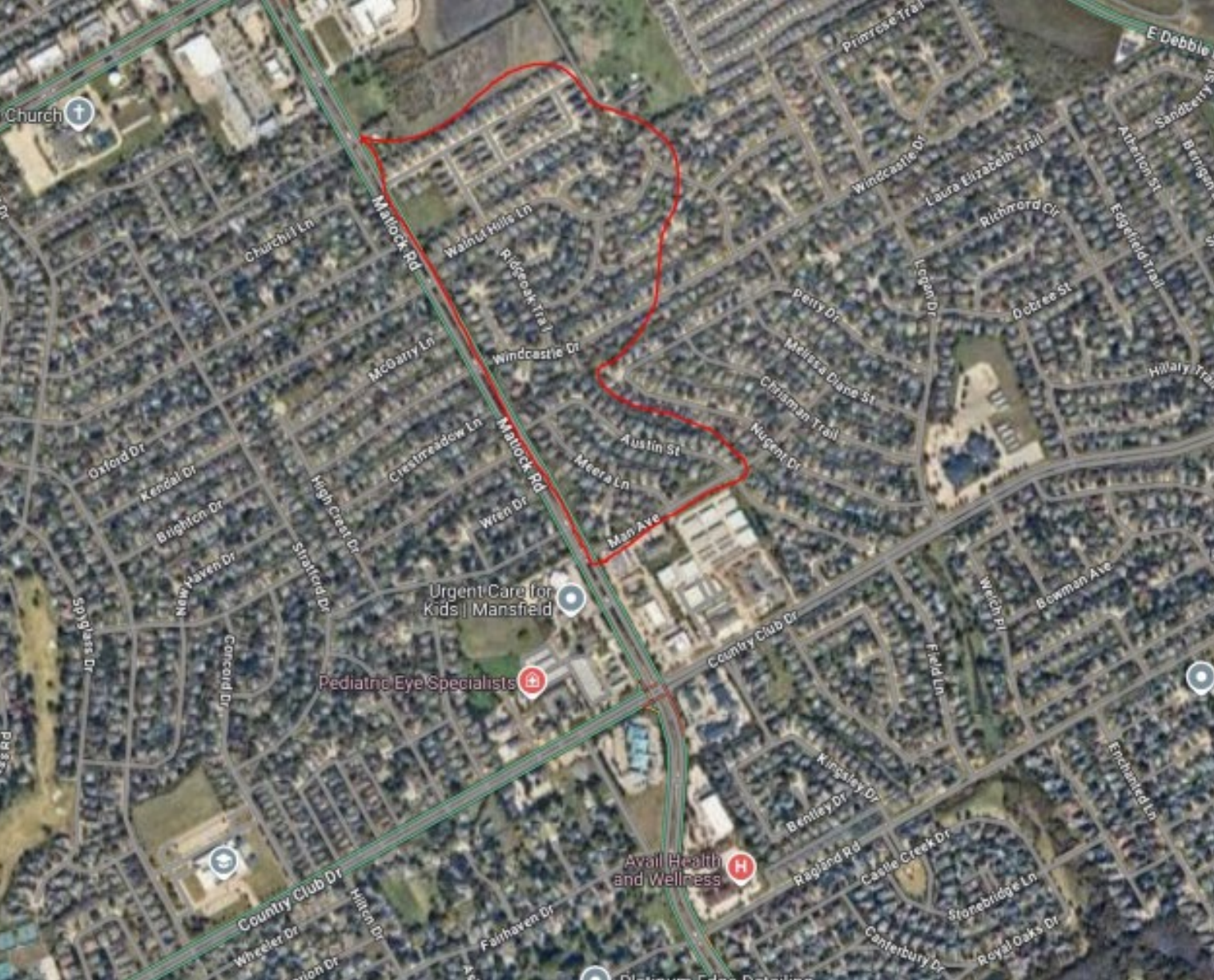
Qualifies due to crossing Country Club Dr.



## Brooks Wester Middle School

Apartments accessed from Matlock Rd.

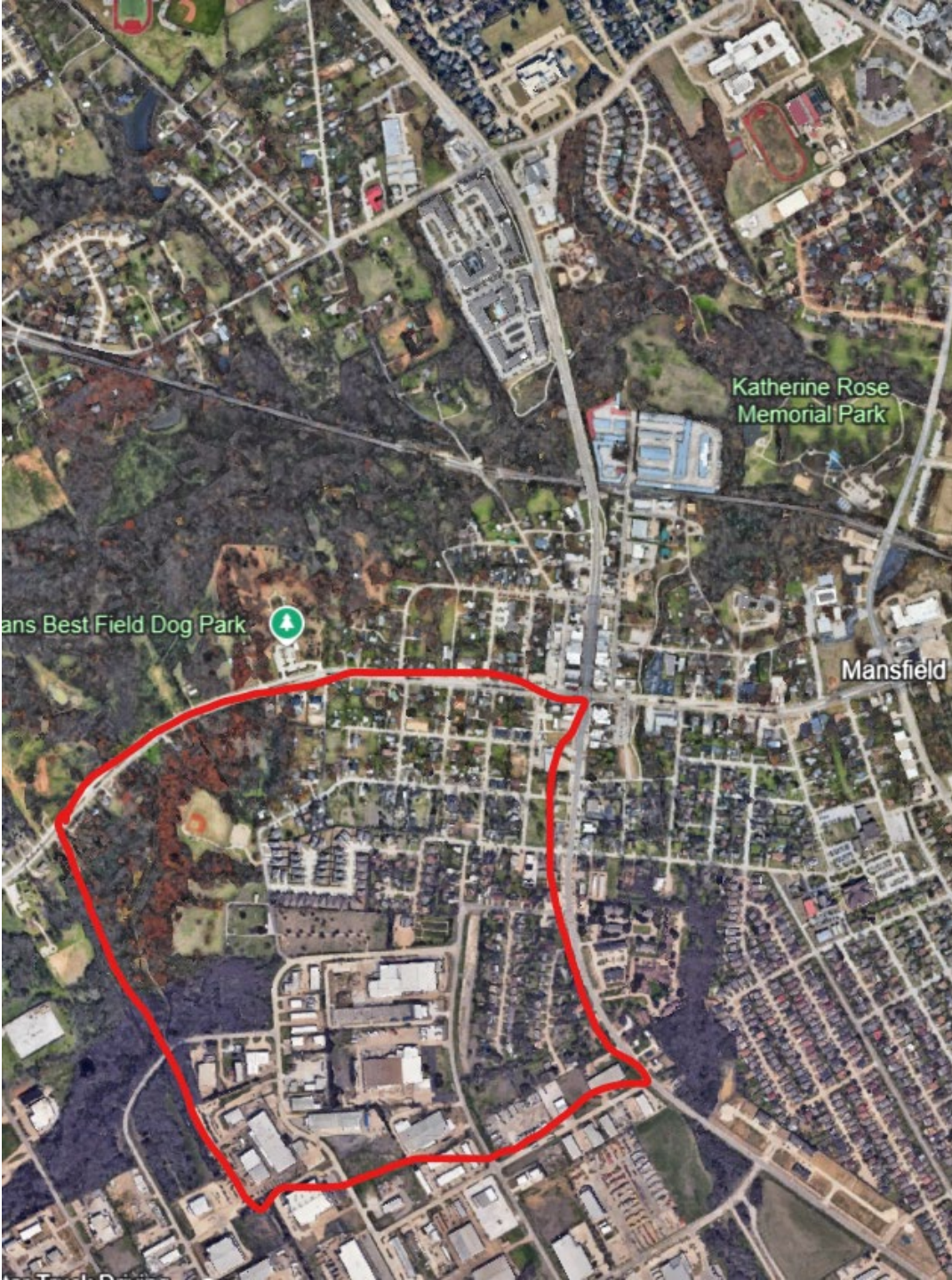
Qualifies due to walking in front of shopping center on Matlock Rd.



## Brooks Wester Middle School

East of Matlock Rd.

Qualifies due to crossing Matlock Rd. without crossing guards/pedestrian assistance.



## Rogene Worley Middle School

West of Main St.

Qualifies due to unsafe walking conditions and inconsistent sidewalk coverage.



## Cross Timbers Intermediate

All of Russell-Curry Rd.

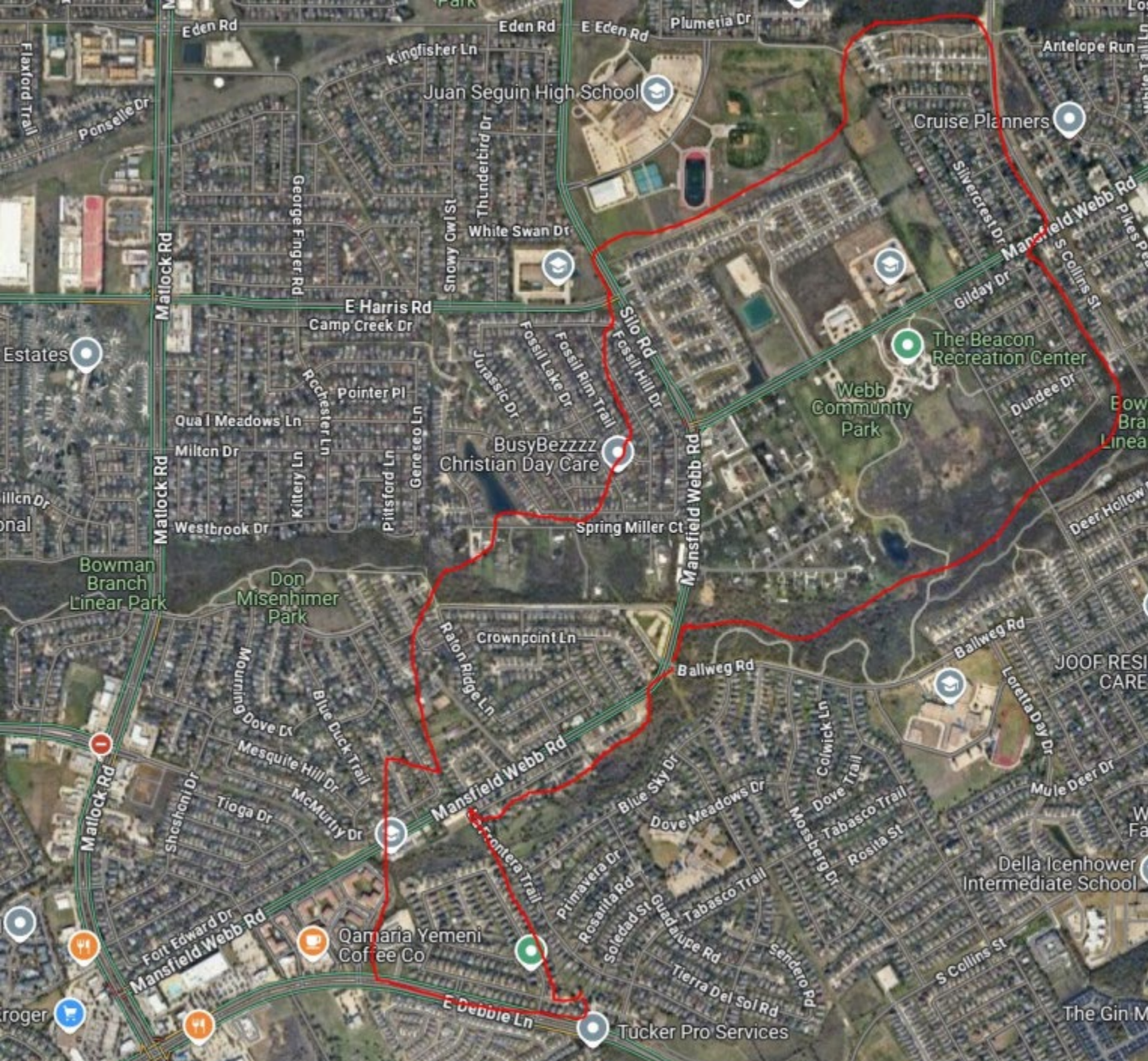
Qualifies due to the absence of sidewalks.



## Cross Timbers Intermediate

North of Eden Rd. on Fox Glen Dr.

Qualifies due to crossing FM 157 and due to the absence of sidewalk access between neighborhoods on Eden Rd.

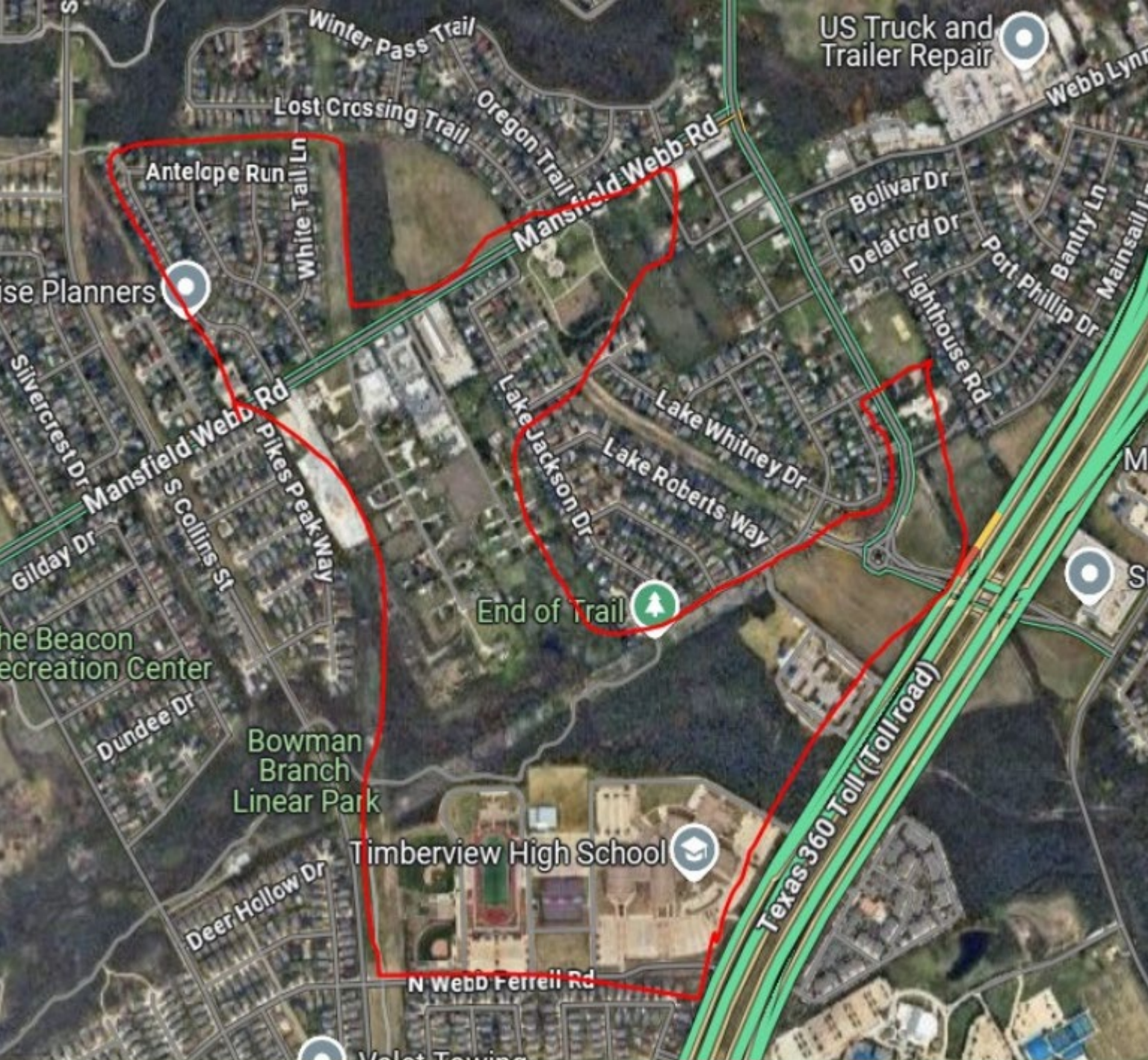


## Della Icenhower Intermediate

West of Webb Ferrell Rd. on Mansfield Webb Rd. & West of Tabasco Trl. on Debbie Ln.

Qualifies due to the absence of sidewalks.

*\*\*Will be reassessed after completion of Mansfield Webb Rd construction project and current construction project on Debbie Ln. 26-27*



## Della Icenhower Intermediate

East of Pikes Peak Way on Mansfield Webb Rd.

Qualifies due to the absence of sidewalk access and walking on Hwy 360.



## Mary Lillard Intermediate

East of Arlington Webb Britton Rd.

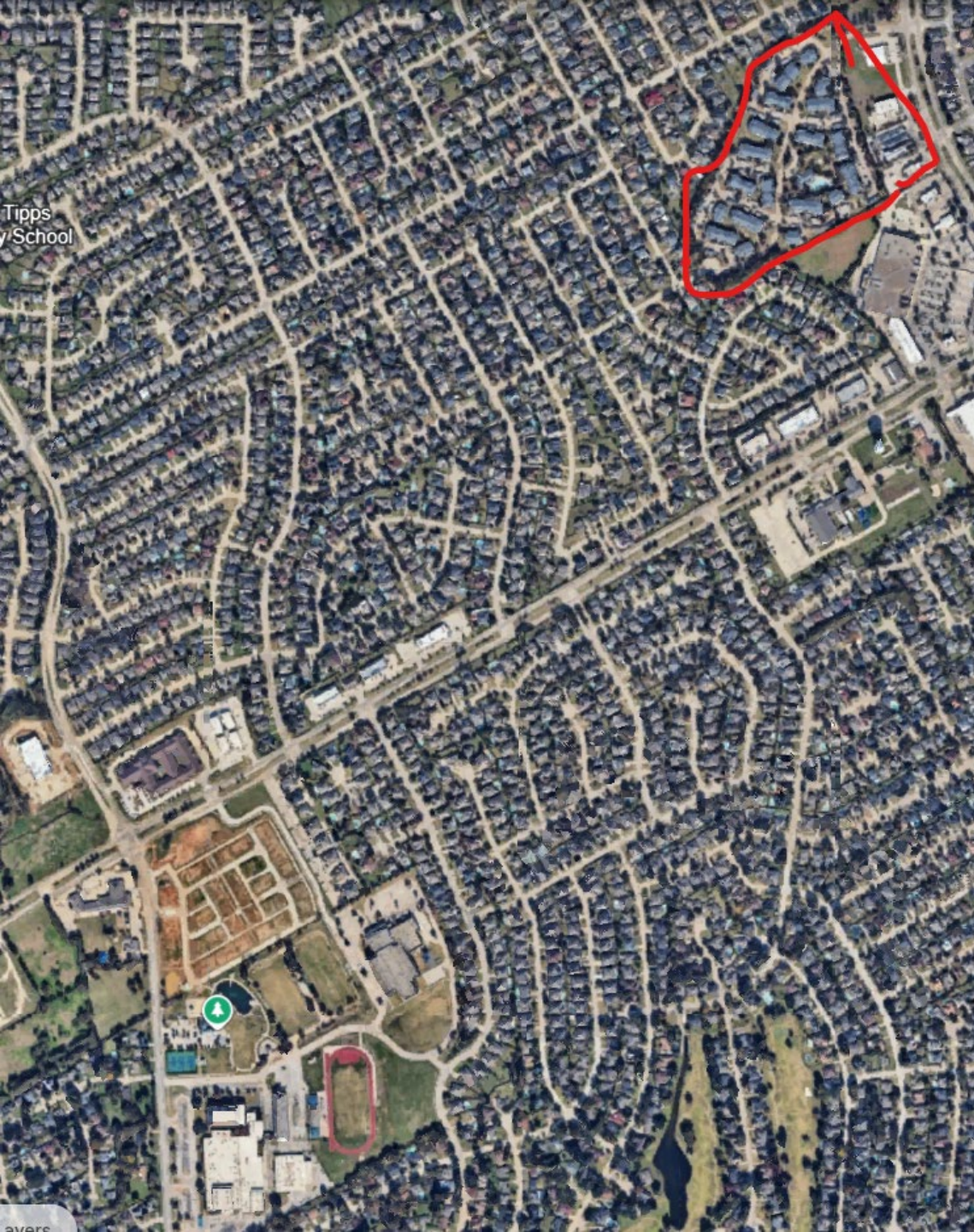
Qualifies due to the absence of sidewalks along Seaton Rd. to Arlington Webb Britton Rd.



**Asa Low Intermediate**

South of Country Club Dr.

Qualifies due to crossing Country Club Dr.



## Asa Low Intermediate

Apartments accessed from Matlock Rd.

Qualifies due to walking in front of shopping center on Matlock Rd.



## Asa Low Intermediate

East of Matlock Rd.

Qualifies due to crossing Matlock Rd. without crossing guards/pedestrian assistance.



## Alma Martinez Intermediate

West of Hwy 287

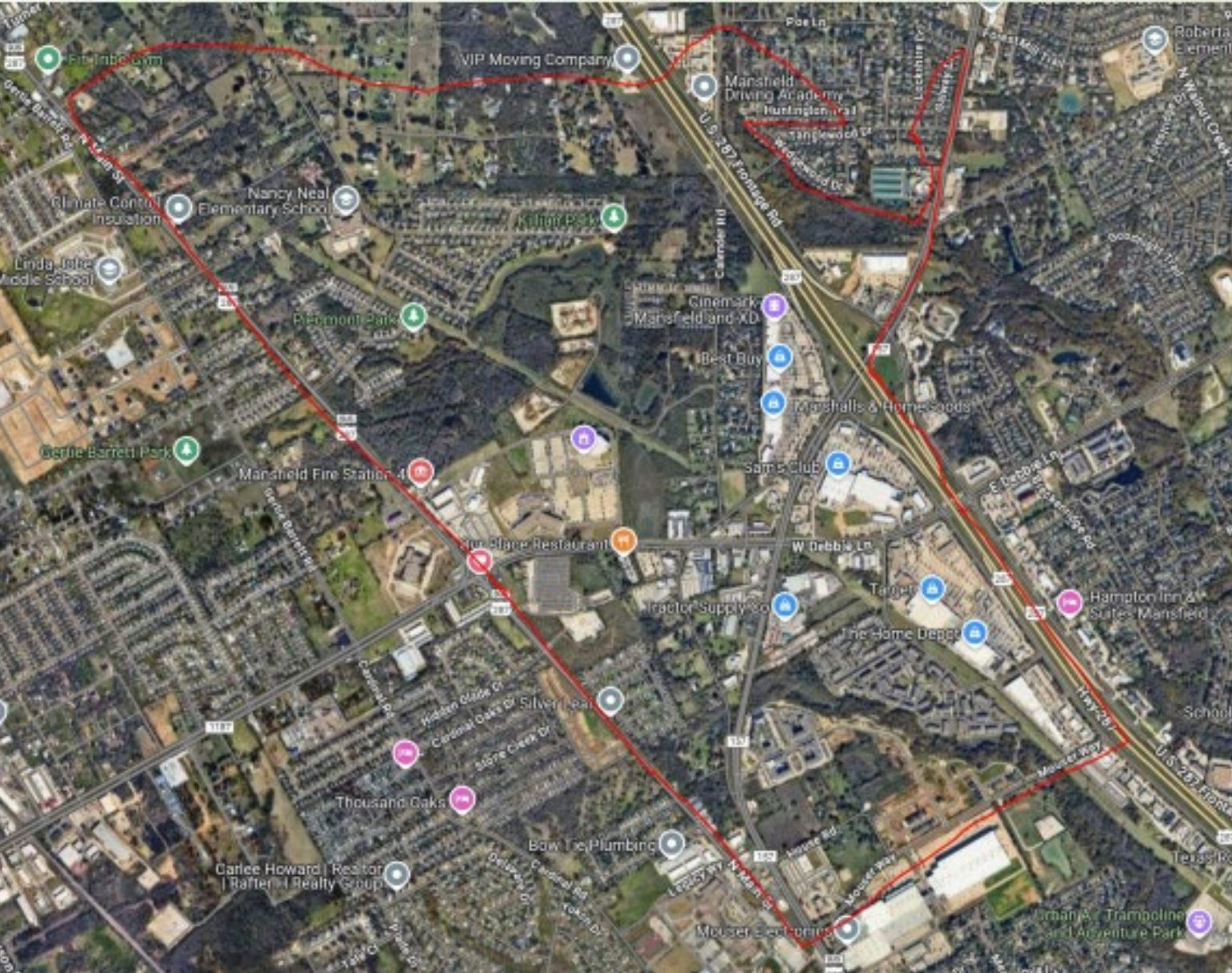
Qualifies due to crossing Hwy 287.



## Mary Orr Intermediate

East of Arbors Dr. on Cannon Ext.

Qualifies due to the absence of sidewalks on Cannon Dr.



## Donna Shepard Intermediate

North of Debbie Ln. on Main St. and East of Ben Barber on Debbie Ln.

Qualifies due to the absence of sidewalks.



## Donna Shepard Intermediate

South of Fern Dr. on Main St./ South of Legacy HS on Cardinal Rd

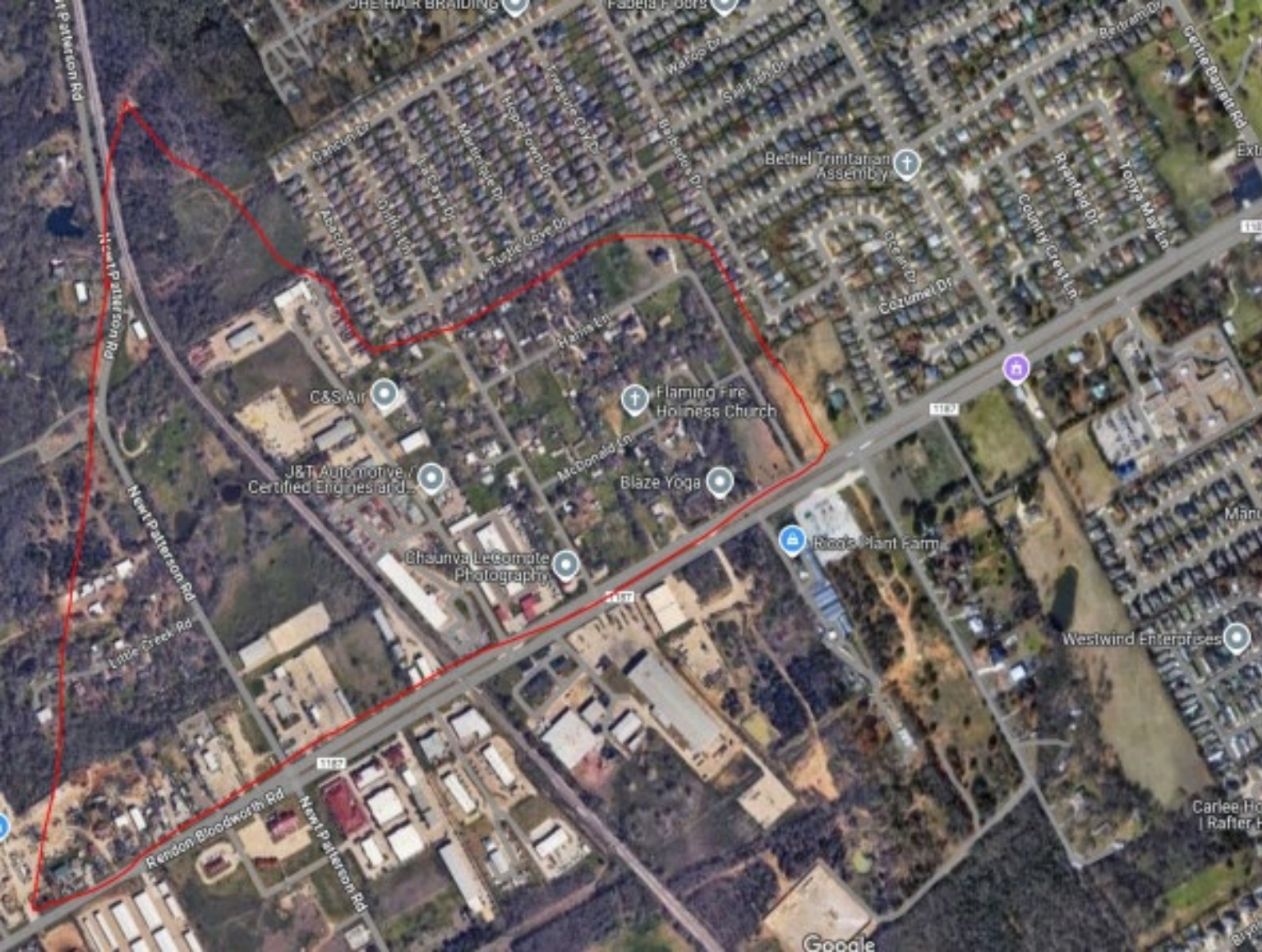
Qualifies due to the absence of sidewalks.



## Donna Shepard Intermediate

North of Linda Jobe on Gertie Barrett Rd.

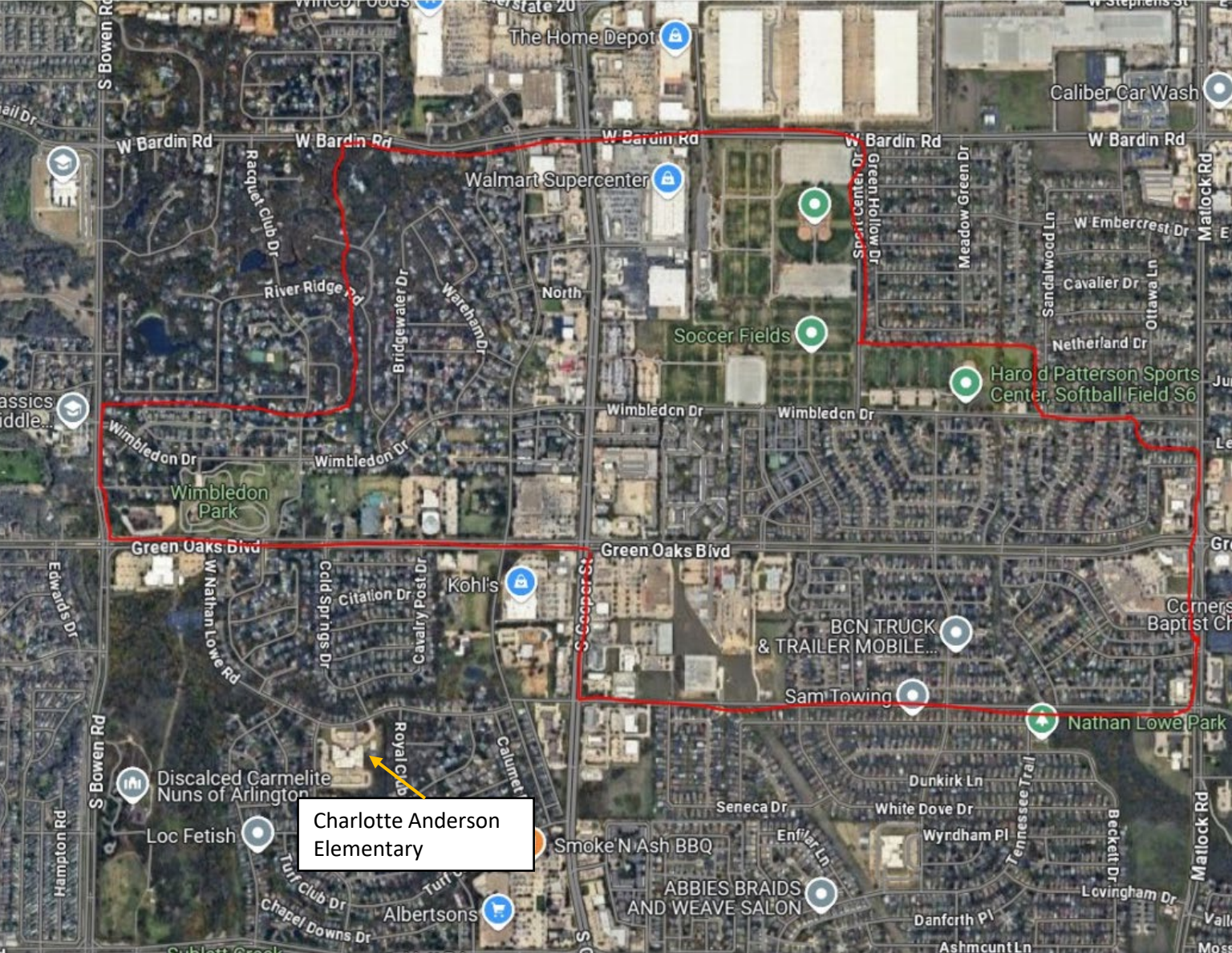
Qualifies due to the absence of sidewalks.



## Donna Shepard Intermediate

West of Coastline Rd. on FM 1187

Qualifies due to the absence of sidewalks beyond Griffin Ln. and no safe path with Railroad tracks.



## Charlotte Anderson Elementary

North of Green Oaks Blvd. and East of Cooper St.

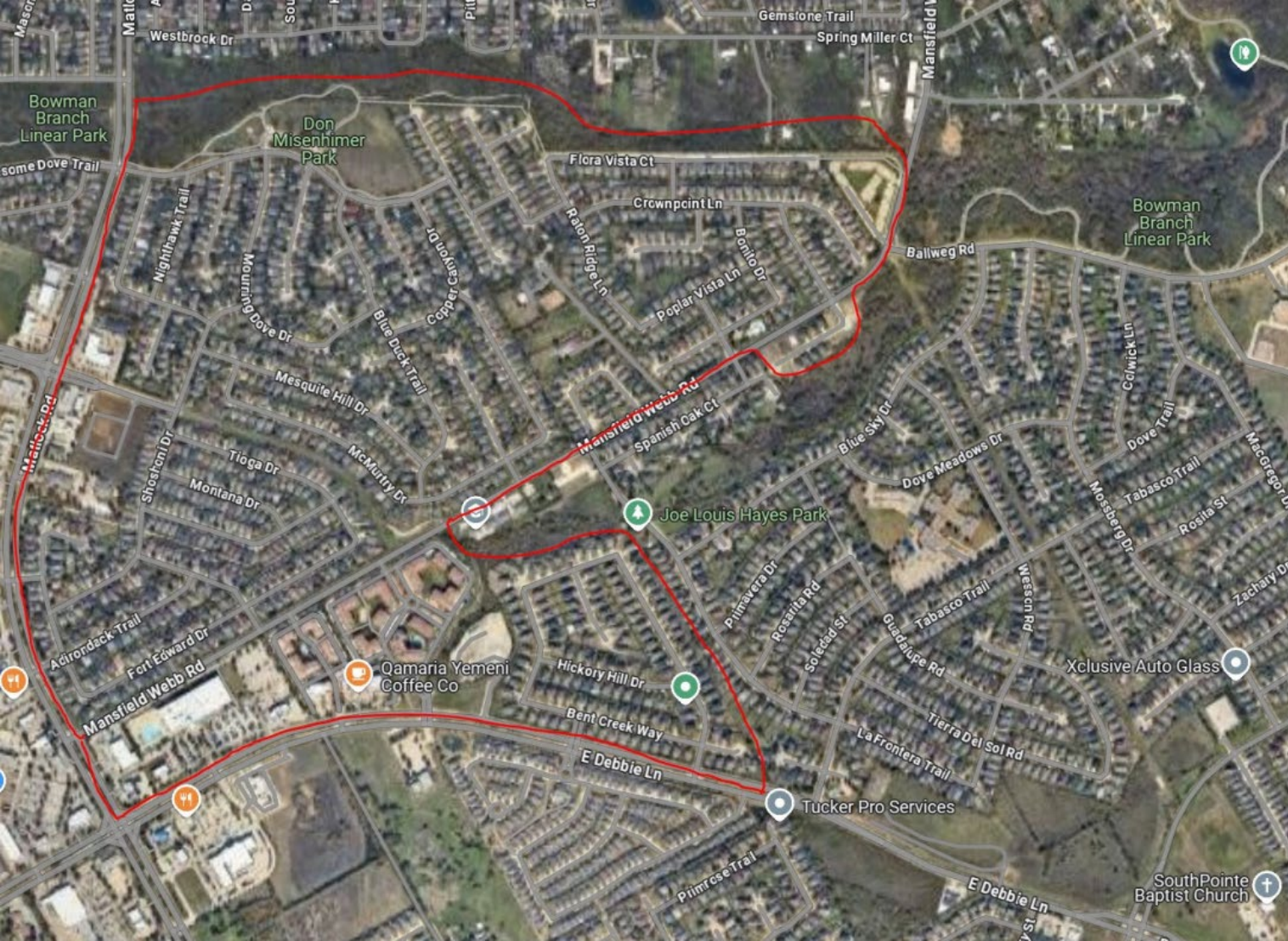
Qualifies due to the absence of sidewalk access across Cooper St. and Green Oaks Blvd.



## J.L. Boren Elementary

West of Walnut Creek Dr. and on Hwy 287 Access Rd.

Qualifies due to absence of a safe path on Walnut Creek Dr. or Hwy 287.



## Janet Brockett Elementary

North and West of Mansfield Webb Rd., West of Tabasco Trl. on Debbie Ln.

Qualifies due to the absence of sidewalks.



## Willie Brown Elementary

East of Arbors Dr. On Cannon Ext.

Qualifies due to the absence of sidewalks into the neighborhood.



## Louise Cabaniss Elementary

North of Webb Lynn Rd. on State Hwy 360

Qualifies due to an unsafe pathway on Hwy 360 to Doryn Dr.



Anna May Daulton  
Elementary

## Anna May Daulton Elementary

South of England Parkway

Qualifies due to a lack of pedestrian assistance on Magellan Dr. at England Parkway. There is not a crossing guard for this path.



## Imogene Gideon Elementary

East, West, and South of the campus on Mansfield Webb Rd.

Qualifies due to the absence of sidewalks to the campus. The entire campus zone is covered on this resolution.

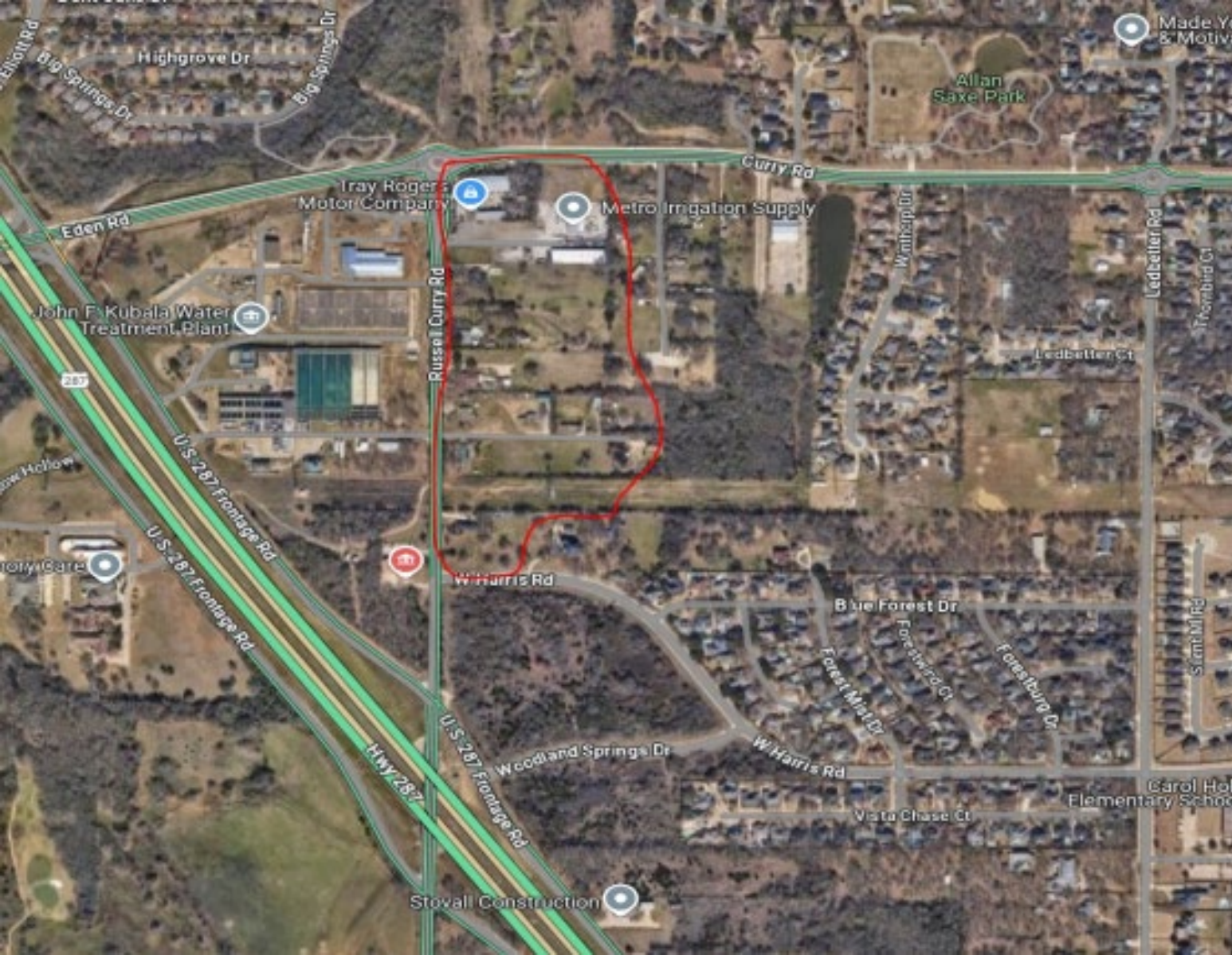
\*Will reassess after completed of Mansfield Webb Rd construction project 26-27



## Glenn Harmon Elementary

South of Sublett Rd.

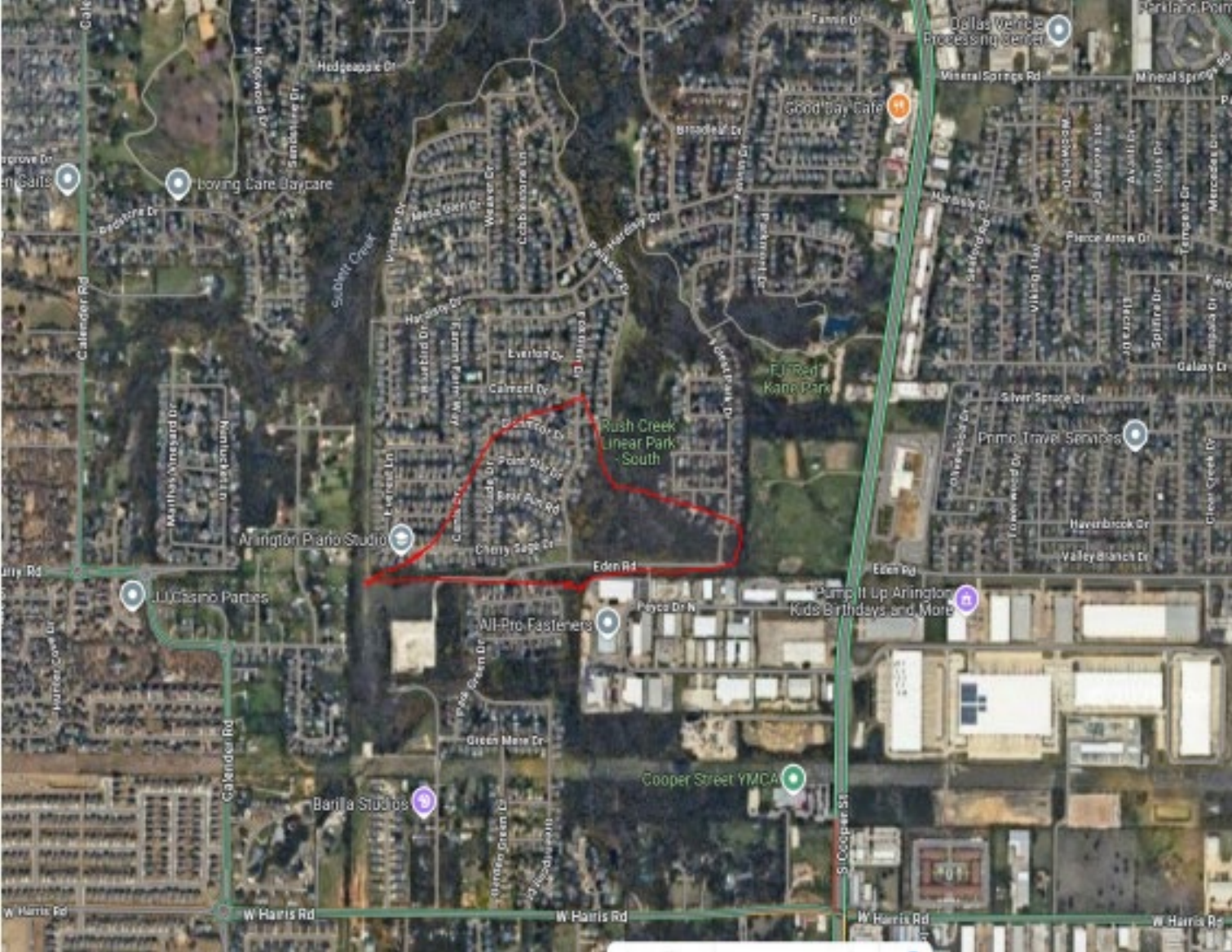
Qualifies due to absence of pedestrian assistance on Sublett Rd.  
There is not a crossing guard for this path.



## Carol Holt Elementary

All of Russell-Curry Rd.

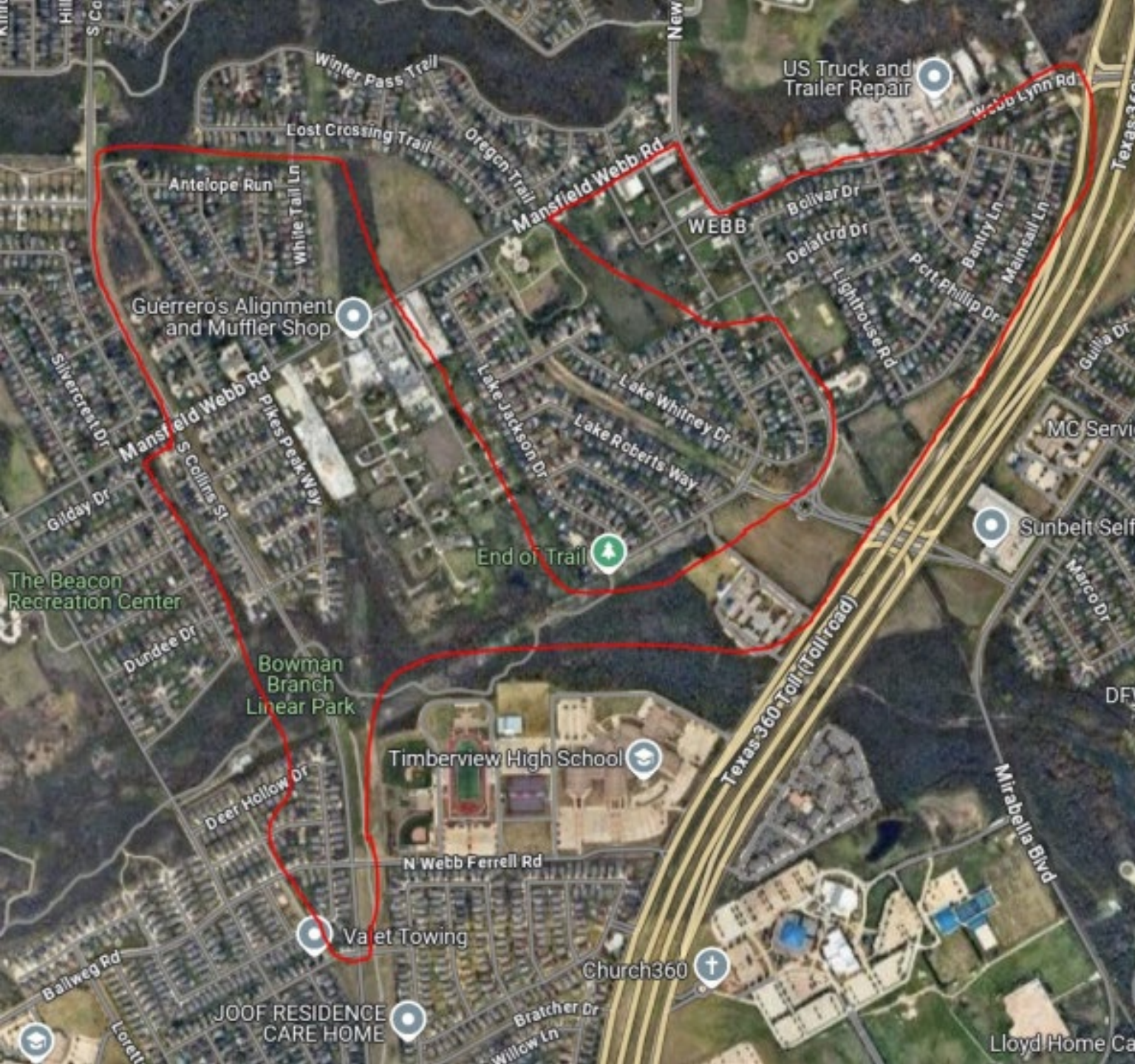
Qualifies due to the absence of sidewalks in the impacted area.



## Carol Holt Elementary

North of Eden Rd. on Fox Glen Dr.

Qualifies due to the absence of sidewalks between neighborhoods on Eden Rd.



## Thelma Jones Elementary

East of New York Ave and North of Camaby St. and West of New York Ave. and East and West of Eden on Mansfield Webb Rd.

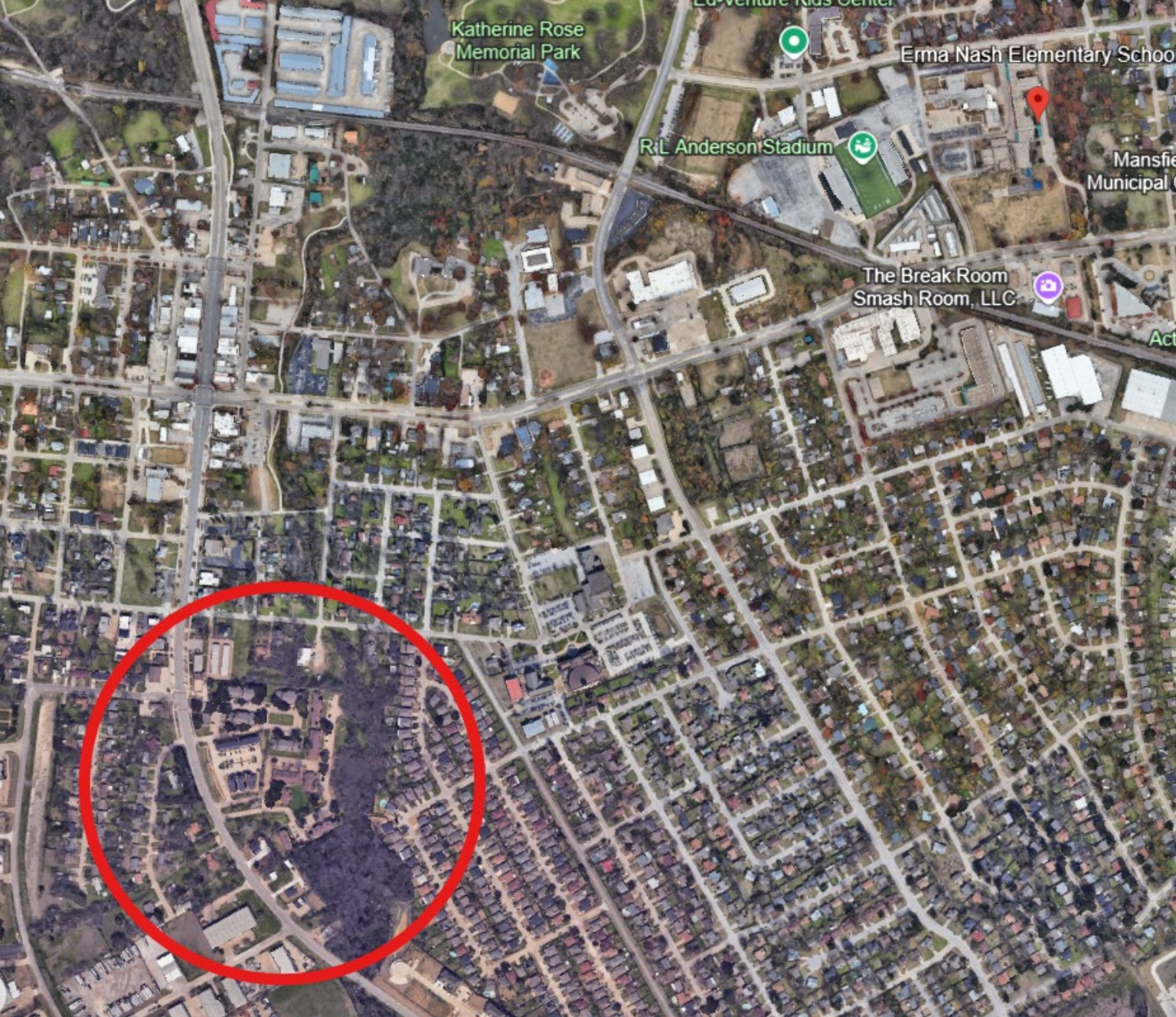
Qualifies due to the absence of sidewalk access or pedestrian crossing assistance on Mansfield Webb and New York Ave into the neighborhood.



## D.P. Morris Elementary

East of Tin Cup Dr. on Harris Rd.

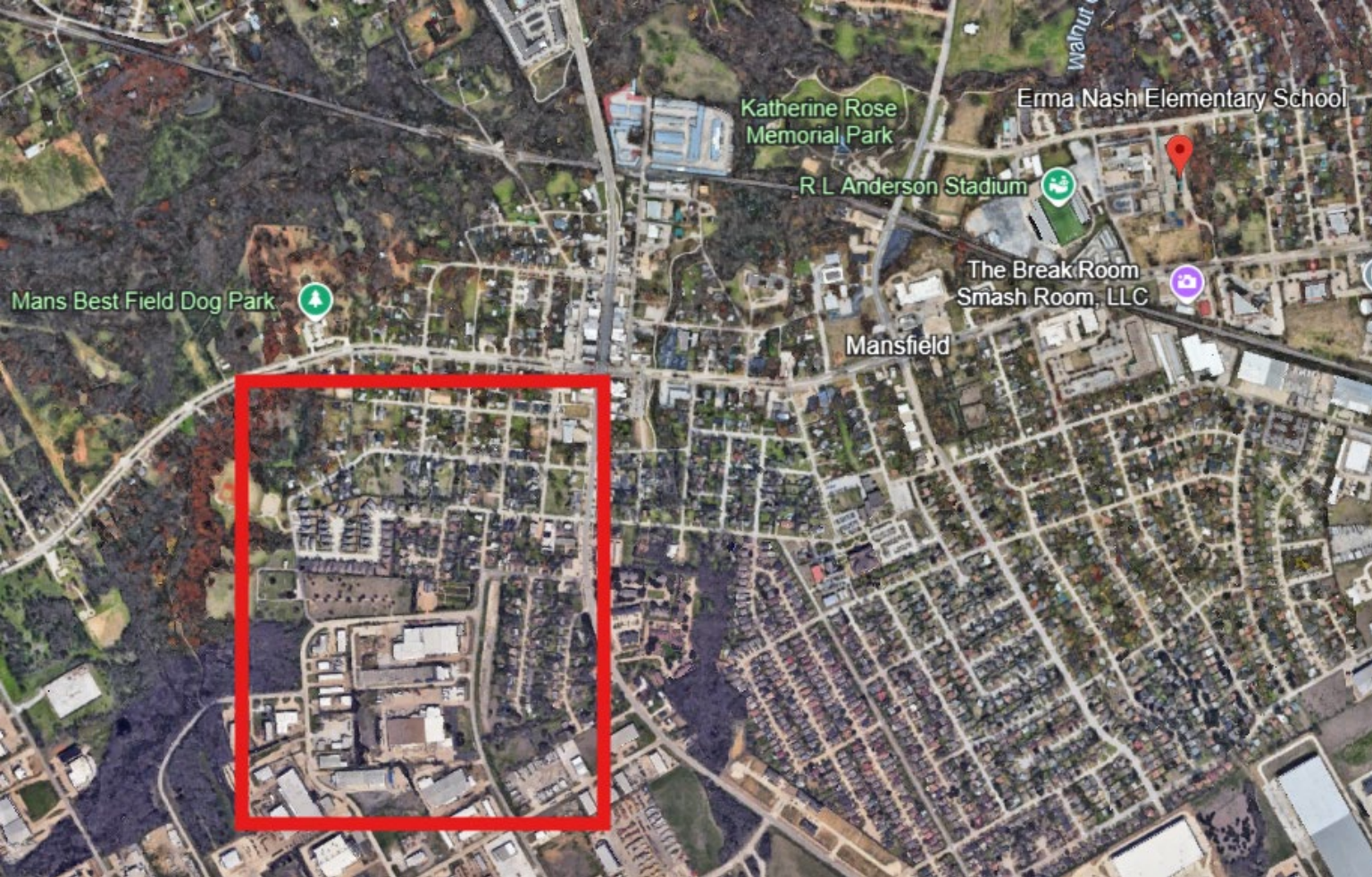
Qualifies due to the absence of sidewalks on Harris Rd. between Tin Cup and Twin Parks



## Erma Nash Elementary

South of Dallas St. on Main St.

Qualifies due to inconsistent sidewalk coverage.



## Erma Nash Elementary

West of Main St., Southside of Broad St.

Qualifies due to lack of crossing guard assistance at the intersection of Main St and Broad St.



## Nancy Neal Elementary

North and West of the campus on Nelson Wyatt and South of Wood River Pkwy. on Main St.

Qualifies due to absence of sidewalk access on the main roads outside of neighborhood.



## Brenda Norwood Elementary

West of Hwy 287

Qualifies due to crossing Hwy 287.



### Judy K. Miller Elementary

East of Hwy 360 Access Rd. on E. Broad St.  
West of Seeton Rd. on N. Holland Rd.

Qualifies due to absence of crossing guard assistance at the Broad St. and N Holland Rd. Intersection. There is also the absence of sidewalks south of the campus.



## Annette Perry Elementary

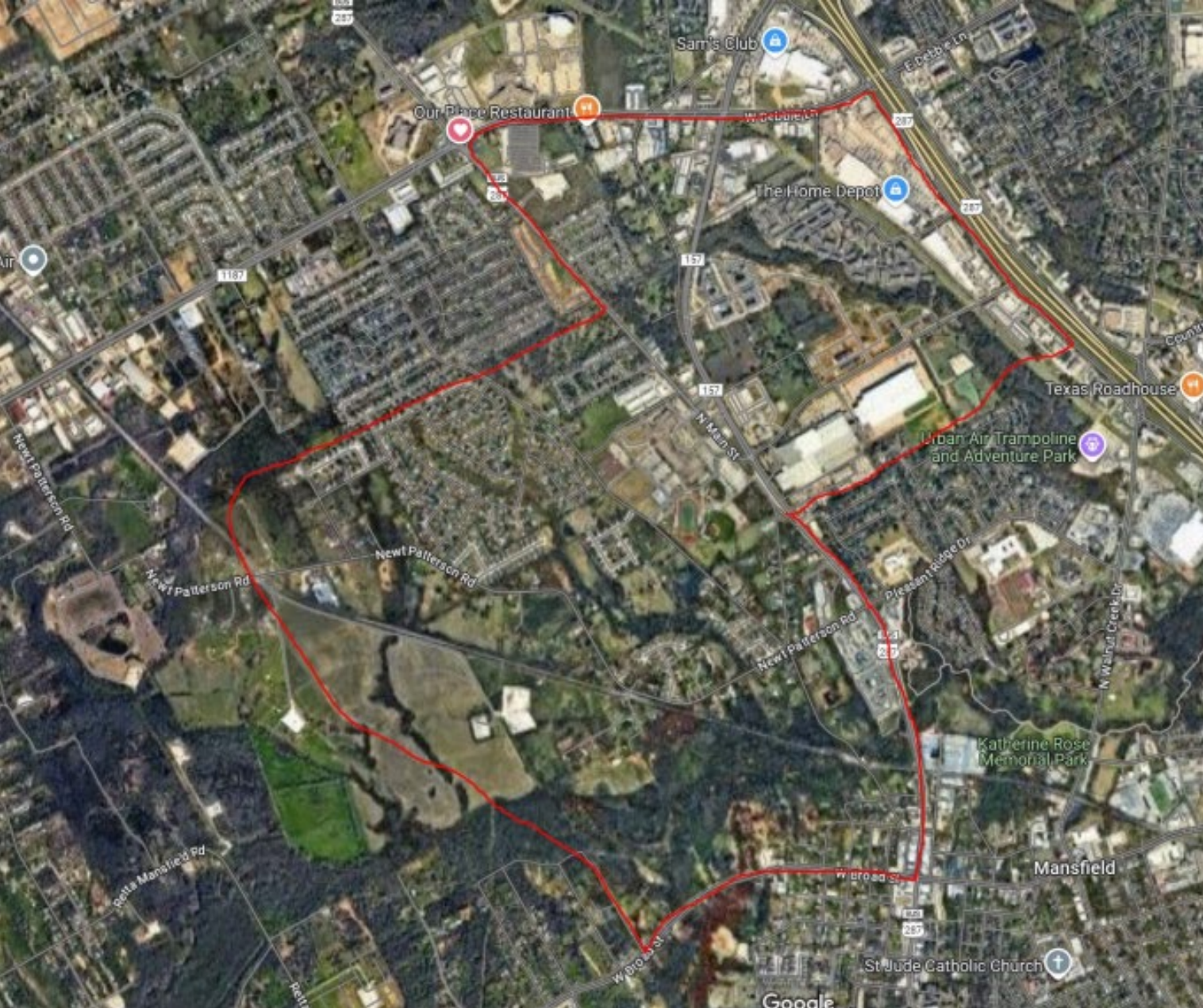
North of Honeysuckle Dr. on Main St.

West of Main St.

South of Perry on Main St

Qualifies due to:

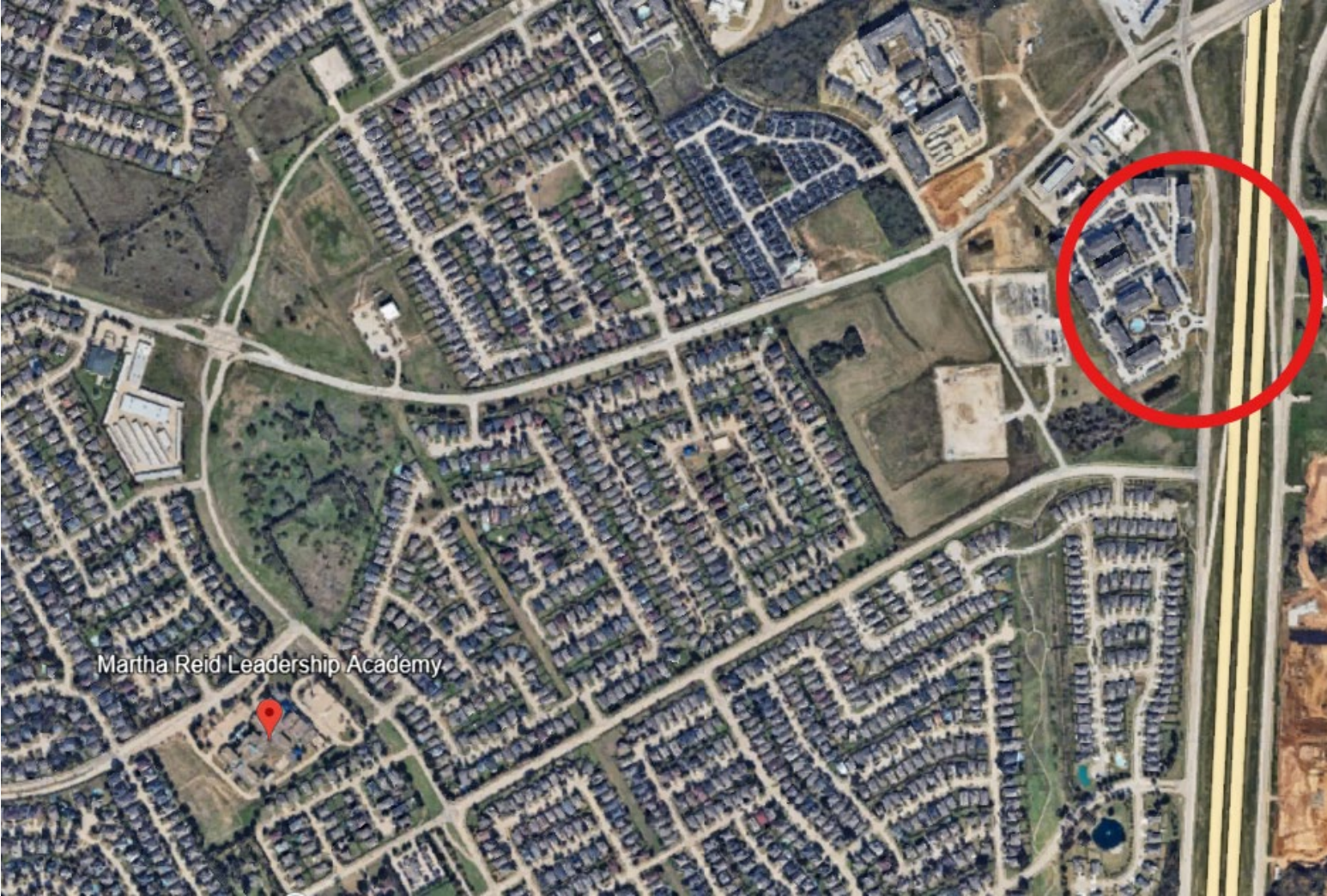
- No safe path/sidewalk access going north on Main St.
- No traffic control device or crossing guard on Main St. to assist.
- No safe path/sidewalk access east on Heritage Pkwy.



## **Alice Ponder Elementary**

West of Main St. on Newt Patterson  
North and South of Pleasant Ridge on Main St. -  
Northside of Broad St.

Qualifies due to the absence of a safe path,  
sidewalks or crossing guards at Main St. and  
Pleasant Ridge.



Martha Reid Leadership Academy

## **Martha Reid Elementary**

South of Debbie Ln. on Hwy 360 Access Rd.

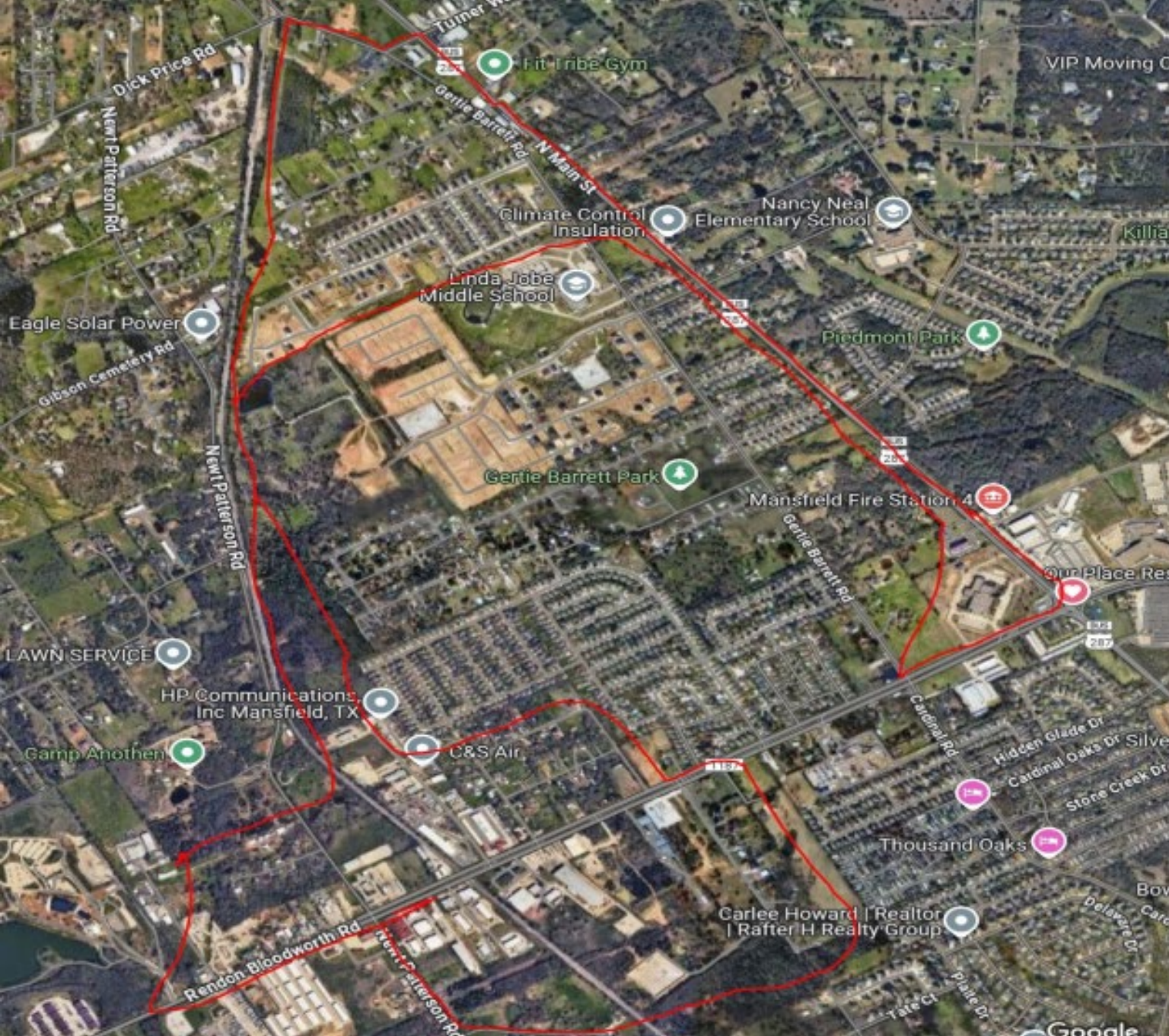
Qualifies due to the walking along Hwy 360 access.



## **Tarver Rendon Elementary**

East, West, and South of Rendon on Retta-Mansfield Rd.

Qualifies due to rural conditions and absence of sidewalks to the campus.



## Mary Jo Sheppard Elementary

North of FM 1187 and West of Coastline Rd.  
and South of FM 1187

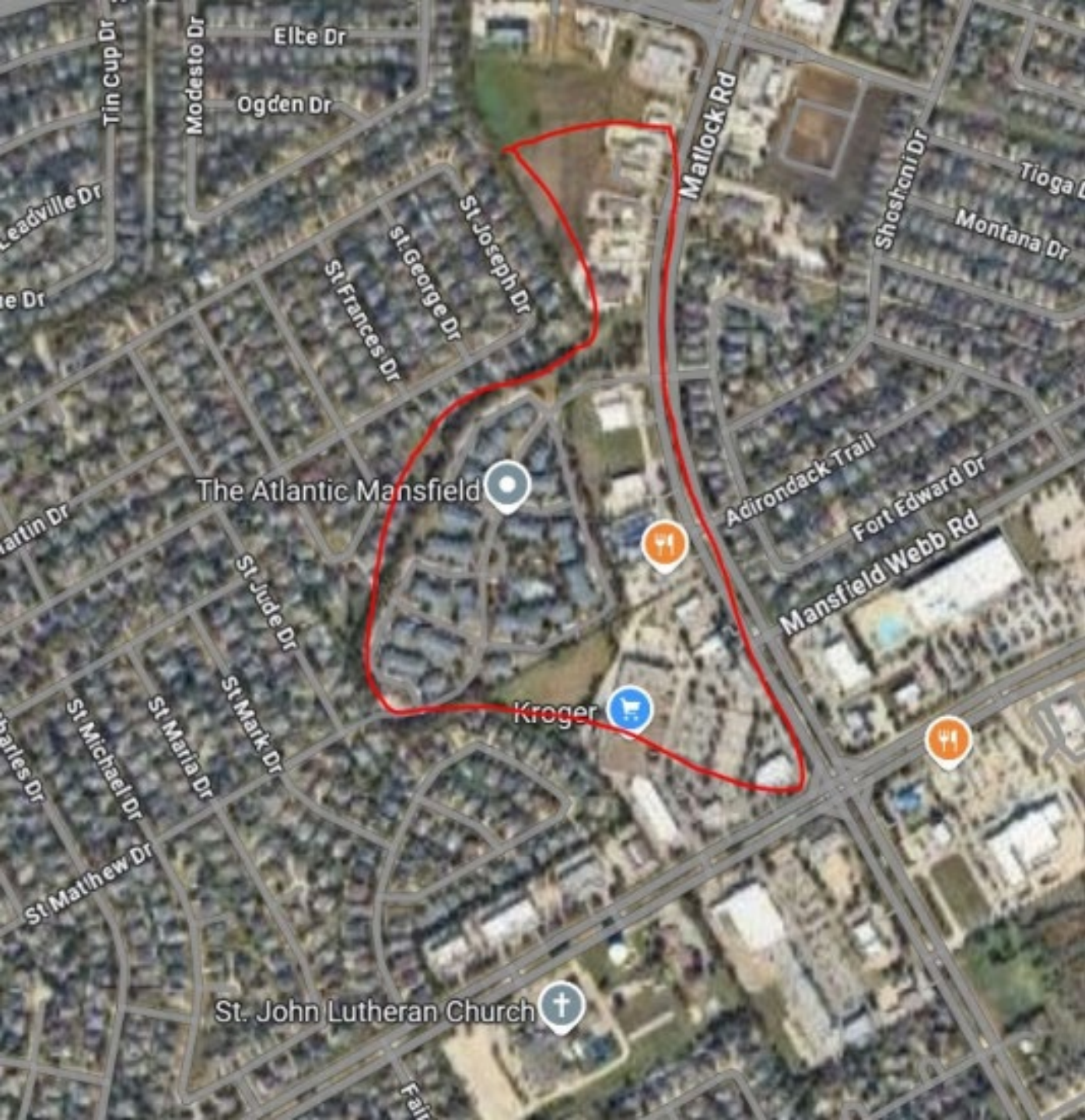
Qualifies due to the absence of sidewalks along  
North Main St. and west of Griffin Ln.



## Elizabeth Smith Elementary

- East of Seeton Rd., South of National Pkwy,
- Seeton Estates at Edgewater Dr.,
- Apartments on Hwy 360 Access

Qualifies due to the absence of sidewalks and lack of a crosswalk on Seeton Rd. Apartments qualify due to walking on Hwy 360.



## Roberta Tipps Elementary

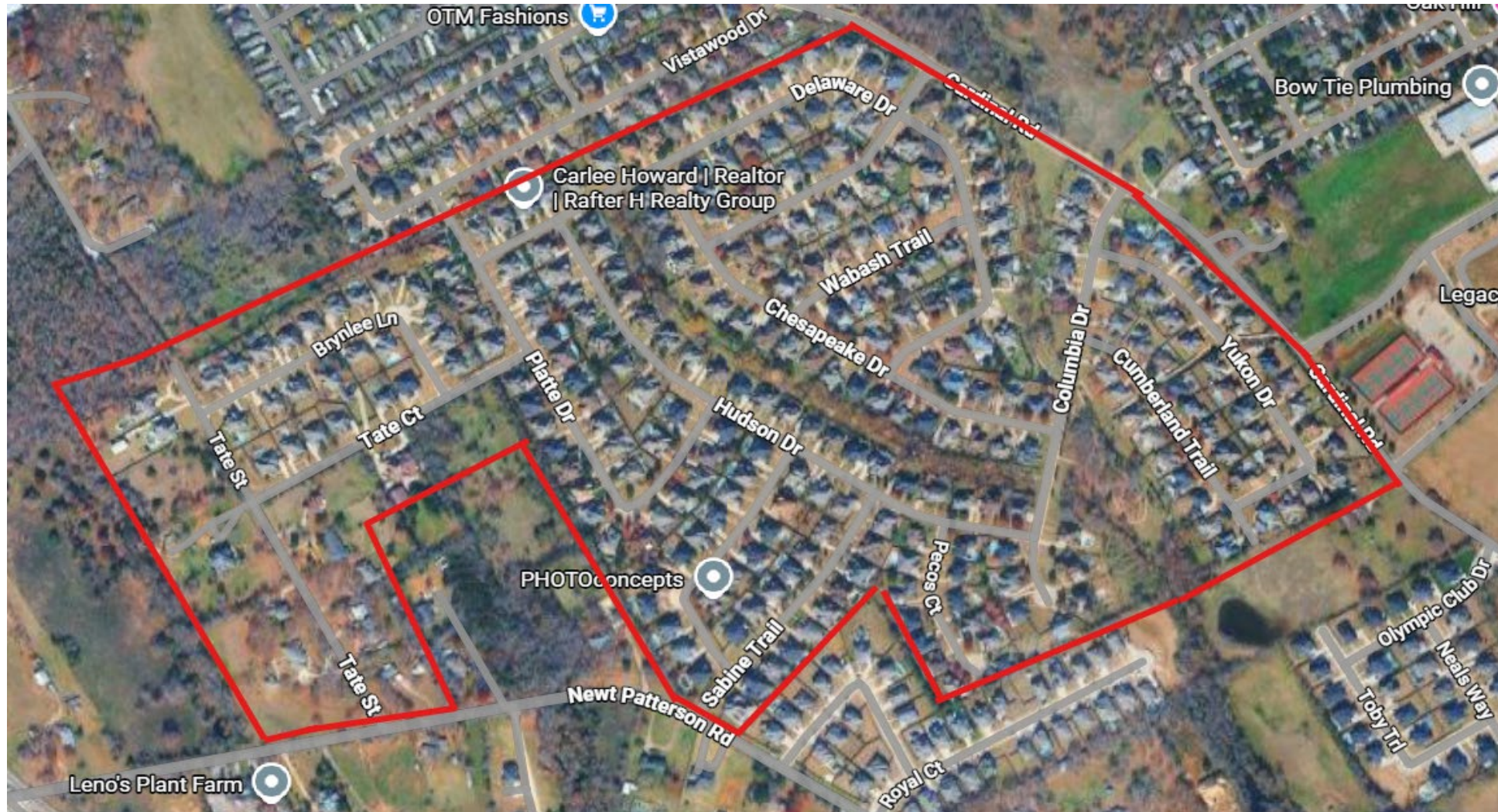
Apartments accessed from Matlock Rd.

Qualifies due to walking in front of shopping center on Matlock Rd.

# Improved Conditions

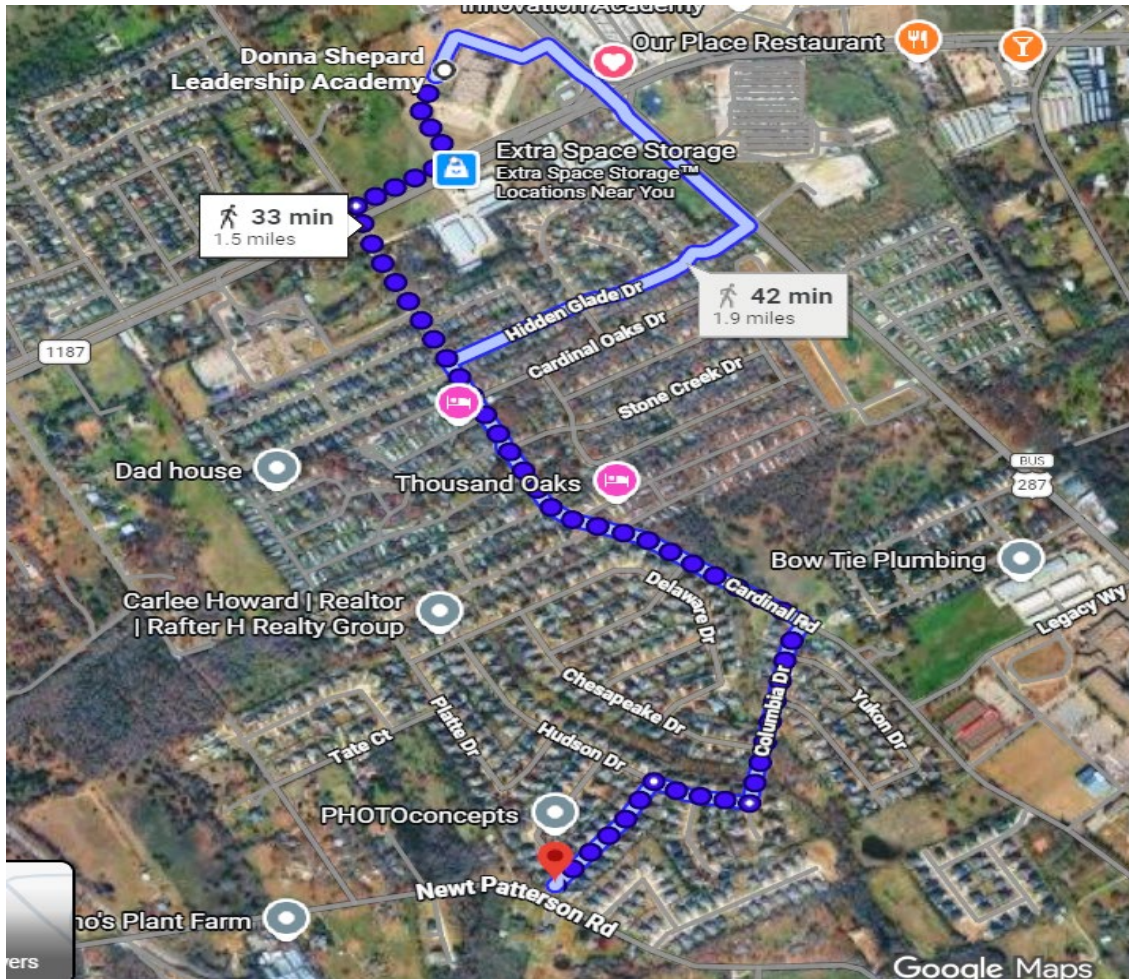
**The following Hazard routes in place for the 2025–2026 school year will be discontinued beginning with the 2026–2027 school year.**

# Donna Shepard IS – Hazard for Review



# Donna Shepard IS Twin Creeks Neighborhood

Walking Distance Calculation 1.2 miles



Multiple crossing guards already in place on Cardinal Rd near Mary Jo Sheppard and FM1187 & Cardinal Rd intersection

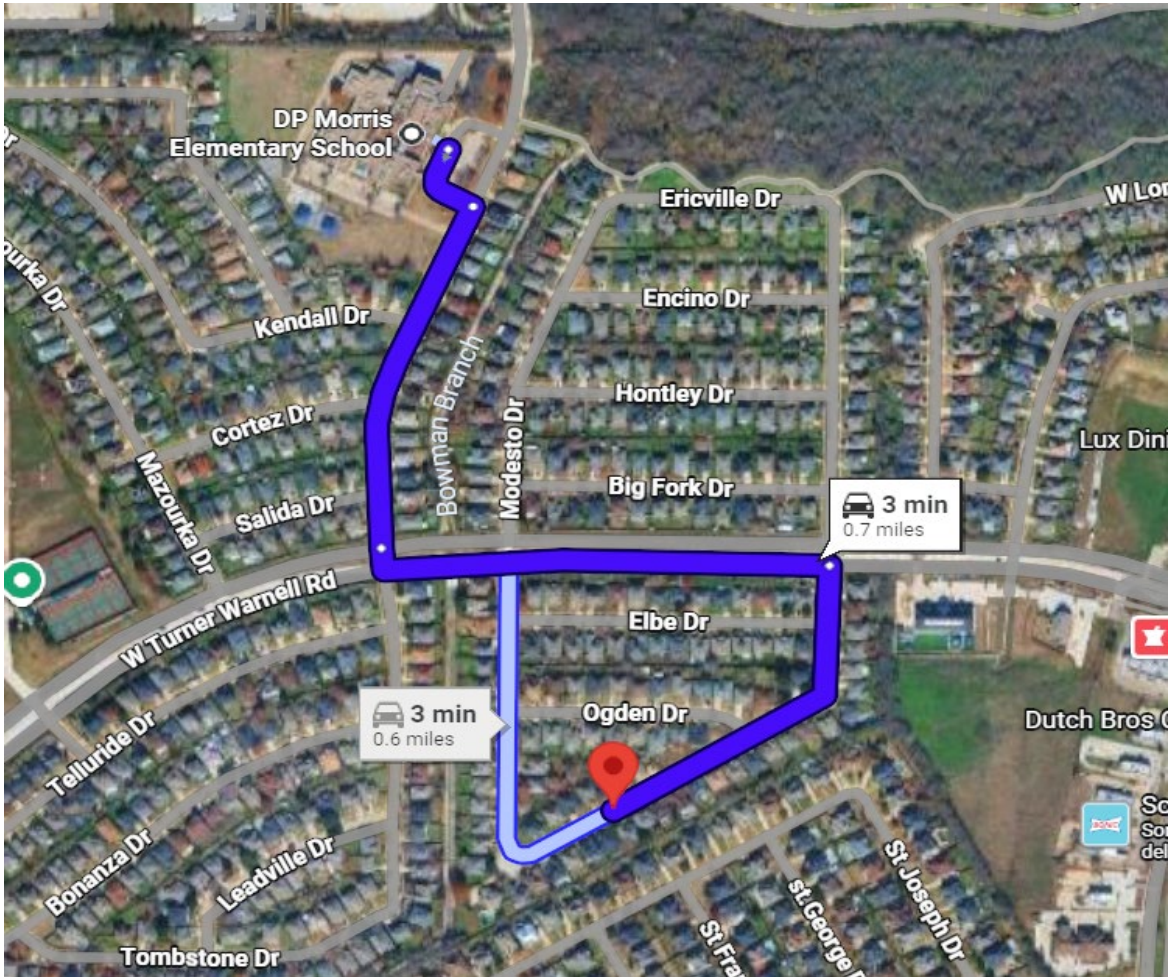
# DP Morris Elementary- Hazards for review



# DP Morris Elementary #1

South of Turner Warnell Rd – Modesto Dr/Mosstree Dr

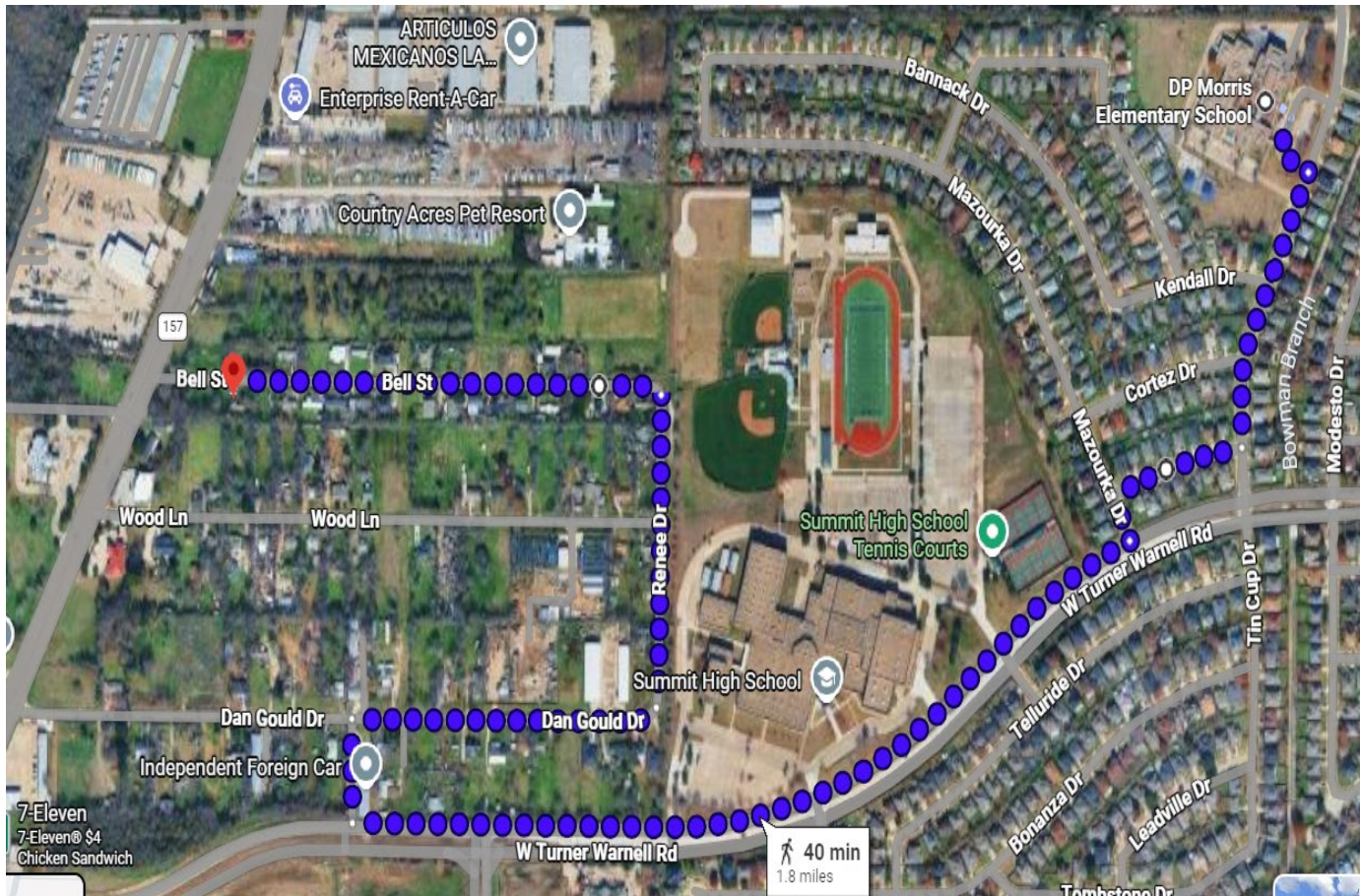
Walking Distance Calculation: 0.6 - 0.7 mile



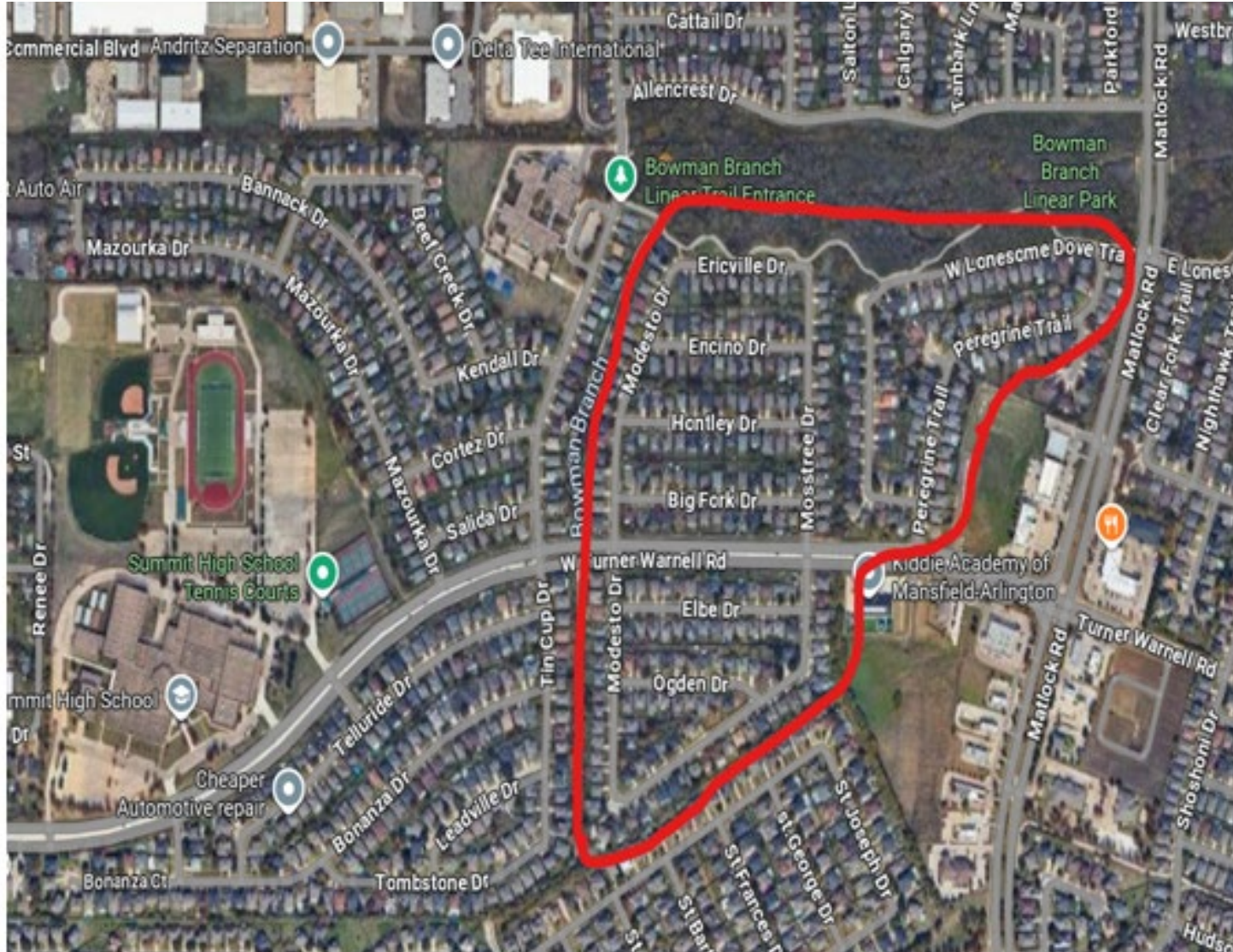
# DP Morris Elementary #2

West on Turner Warnell Rd – Wood Ln/Bell St/Dan Gould Dr

Walking Distance Calculation: 1.8 miles



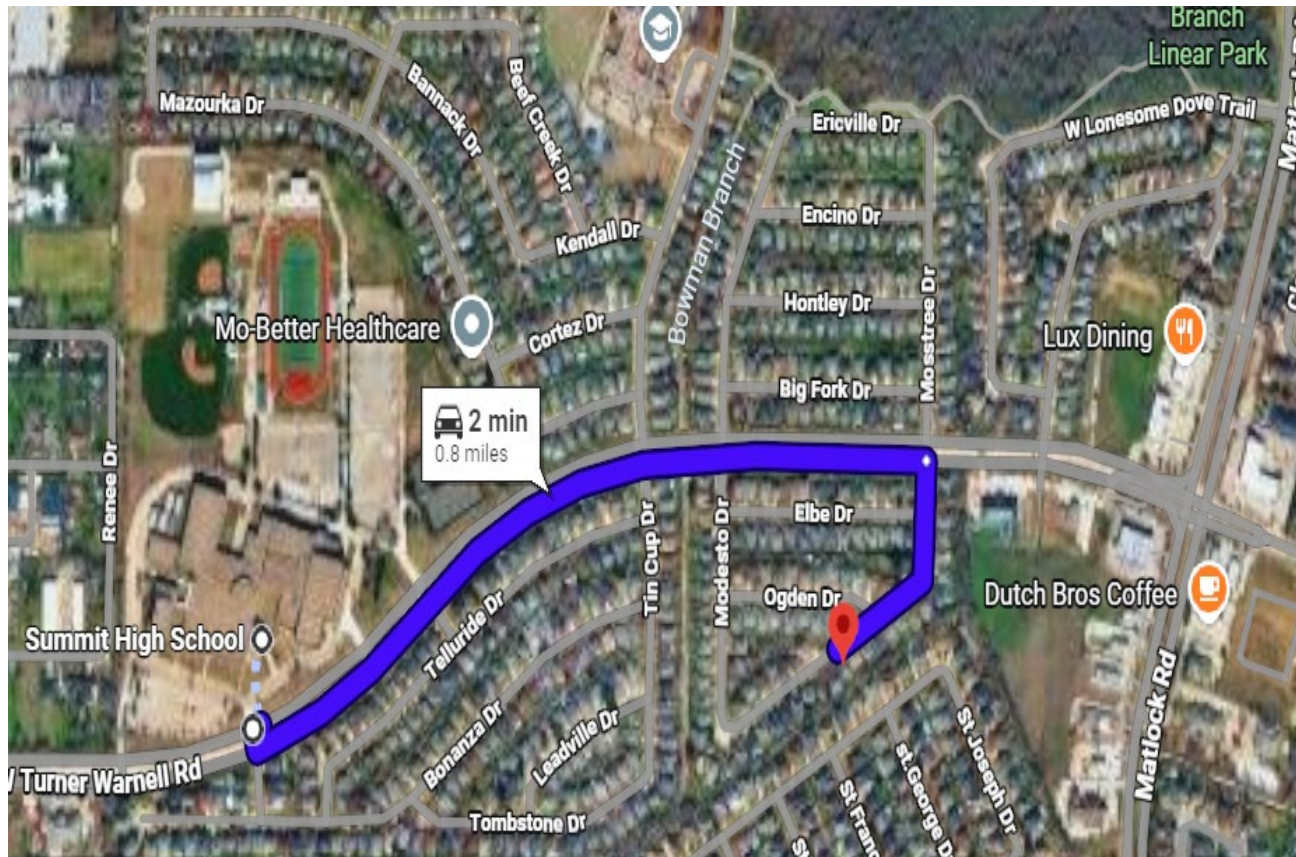
# Summit HS – Hazard for Review



# Summit High School

## Turner Warnell Rd-East to Matlock Rd (southside)

Walking Distance Calculation: 0.8 mile

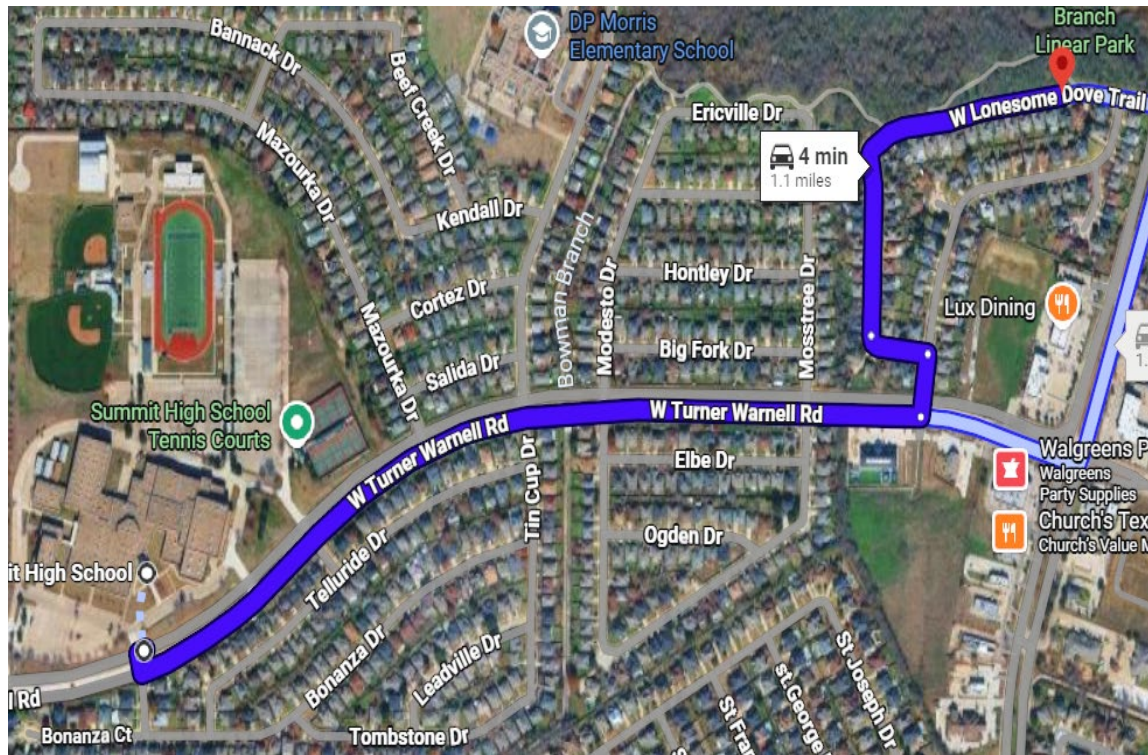


Crossing guard exists at crosswalk in front of campus on Turner Warnell Rd -sidewalk down both sides of Turner Warnell Rd

# Summit High School

## Turner Warnell Rd-East to Matlock Rd (northside)

Walking Distance Calculation 1.2 miles



Crossing guard and cross walk at the front of Summit (Turner Warnell Rd & Silverton Dr) - sidewalk down both sides of Turner Warnell Rd

