

**Project:**  
Sourcewell - Lincoln Hall Middle School

**From:**  
TriMark Marlinn LLC  
Anthony Schittino  
6100 W 73rd Street  
Bedford Park, IL 60638  
708-496-1700  
001f400000CvFdhAAF

Job Reference Number: 00511814




Prices may not reflect applicable tariffs. Any increase in costs resulting from tariffs shall be added to the total price included in this Quote and shall be payable by customer. In addition, TriMark reserves the right to make corrections or adjustments to quoted prices due to cost increases, market fluctuations, supply chain disruptions, third party supplier changes in cost, general contractor delays, or any other factors outside of TriMark's control.

This Pricing is in accordance with the Sourcewell Contract #063022-SES-FoodserviceEquipment and Supplies

Lincolnwood SD74 Sourcewell Account #15775

Item	Qty	Description	Sell	Sell Total
1	1 ea	<b>OPEN DISPLAY MERCHANDISER</b> Beverage Air Model No. VMHCSL-18-1-W Vuemax Series Slim Open-Air Merchandiser, 47-7/16"W x 24-3/8"D x 83-1/2" H, 12.7 cu. ft. capacity, tempered thermal glass sides, (5) shelves, price tag molding, night curtain, 36° F - 40° F operating temperatures, LED interior lighting, maintenance-free condenser, automatic defrost, R290 Hydrocarbon refrigerant, painted steel interior, white vinyl wrapped exterior, (2) 1/3 HP, cETLus, ETL-Sanitation	\$9,711.21	\$9,711.21
	1 ea	3 Year Parts/Labor warranty. 5 year compressor warranty (excludes maintenance items)		
	1 ea	115v/60/1-ph, 12 amps, NEMA 5-20P		
			<b>ITEM TOTAL:</b>	<b>\$9,711.21</b>



Item	Qty	Description	Sell	Sell Total
3 	5 ea	<b>WIRE SHELVING</b> Metro Model No. 3060NK3 Super Erecta® Super Wide™ Shelf, wire, 60"W x 30"D, Metroseal™ Green epoxy-coated corrosion-resistant finish with Microban® antimicrobial protection, plastic split sleeves are included in each carton, NSF	\$112.18	\$560.90
	4 ea	74PK3 Quick Ship - Super Erecta® SiteSelect™ Post, 74-1/2"H, adjustable leveling bolt, posts are grooved at 1" increments & numbered at 2" increments, double grooved every 8", Metroseal 3 Green epoxy coated corrosion-resistant finish with Microban® antimicrobial protection	\$19.43	\$77.72
			<b>ITEM TOTAL:</b>	<b>\$638.62</b>
4 	1 ea	<b>CART, UTILITY/BUSSING</b> New Age Model No. NS745 Bussing Cart, open design, (3) solid shelves, shelf size approximately 18-1/2" x 28-3/4", 13" spacing, all welded aluminum construction, aluminum tubular frame with push handle, 350 lbs. capacity, (4) 5" stem casters, (2) swivel & (2) with brakes, NSF, Made in USA, (standard factory lead time)	\$511.98	\$511.98
	1 ea	Lifetime warranty against rust & corrosion, 5 year workmanship and material defects warranty, standard		
			<b>ITEM TOTAL:</b>	<b>\$511.98</b>
FREEZ ER 	12 ea	<b>WIRE SHELVING</b> Metro Model No. 2436NK3 Quick Ship - Super Erecta® Shelf, wire, 36"W x 24"D, Metroseal™ Green epoxy-coated corrosion-resistant finish with Microban® antimicrobial protection, plastic split sleeves are included in each carton, NSF	\$56.70	\$680.40
	4 ea	2442NK3 Quick Ship - Super Erecta® Shelf, wire, 42"W x 24"D, Metroseal™ Green epoxy-coated corrosion-resistant finish with Microban® antimicrobial protection, plastic split sleeves are included in each carton, NSF	\$69.30	\$277.20
	8 ea	2448NK3 Quick Ship - Super Erecta® Shelf, wire, 48"W x 24"D, Metroseal™ Green epoxy-coated corrosion-resistant finish with Microban® antimicrobial protection, plastic split sleeves are included in each carton, NSF	\$69.30	\$554.40
	20 ea	72CPK3 Super Erecta® Post, special cut length, 72-3/8"H, for stationary use, includes: post cap & leveling bolt, Metroseal 3 Green epoxy coated corrosion-resistant finish with Microban® antimicrobial protection®	\$24.68	\$493.60
	16 ea	9995Z Quick Ship - Super Erecta® "S"Hook, zinc	\$2.28	\$36.48
				<b>ITEM TOTAL:</b>

Item	Qty	Description	Sell	Sell Total
COOLE R	12 ea	<b>WIRE SHELVING</b>  Metro Model No. 2436NK3 Quick Ship - Super Erecta® Shelf, wire, 36"W x 24"D, Metroseal™ Green epoxy-coated corrosion-resistant finish with Microban® antimicrobial protection, plastic split sleeves are included in each carton, NSF	\$56.70	\$680.40
	4 ea	2442NK3 Quick Ship - Super Erecta® Shelf, wire, 42"W x 24"D, Metroseal™ Green epoxy-coated corrosion-resistant finish with Microban® antimicrobial protection, plastic split sleeves are included in each carton, NSF	\$69.30	\$277.20
	8 ea	2448NK3 Quick Ship - Super Erecta® Shelf, wire, 48"W x 24"D, Metroseal™ Green epoxy-coated corrosion-resistant finish with Microban® antimicrobial protection, plastic split sleeves are included in each carton, NSF	\$69.30	\$554.40
	20 ea	72CPK3 Super Erecta® Post, special cut length, 72-3/8"H, for stationary use, includes: post cap & leveling bolt, Metroseal 3 Green epoxy coated corrosion-resistant finish with Microban® antimicrobial protection®	\$24.68	\$493.60
	16 ea	9995Z Quick Ship - Super Erecta® "S"Hook, zinc	\$2.28	\$36.48
			<b>ITEM TOTAL:</b>	<b>\$2,042.08</b>
FRT	1 ea	<b>INBOUND/OUTBOUND FREIGHT</b> FREIGHT Model No. FRTDLV TBD and added - based on final order	\$376.03	\$376.03
			<b>ITEM TOTAL:</b>	<b>\$376.03</b>
DLV	1 ea	<b>DELIVERY</b> TriMark Model No. DLVSIP Deliver and set in place. Shelving assembly is not included	\$300.00	\$300.00
			<b>ITEM TOTAL:</b>	<b>\$300.00</b>

Merchandise	\$15,622.00
Freight	\$221.81
<b>Total</b>	<b>\$15,843.81</b>

**A. PRICING EXPIRATION**

The prices in this proposal expire 30 days after the date of the proposal with no exceptions. Known or unknown tariff costs may not be included in the pricing on this proposal and are the responsibility of the purchaser.

Quote does not include freight or Delivery/Set in Place unless noted. No accessories are included unless noted.

**B. GOVERNMENT IMPOSED TARIFFS**

Prices may not reflect applicable tariffs. Any increase in costs resulting from tariffs shall be added to the total price included in this Quote and shall be payable by customer. In addition, TriMark reserves the right to make corrections or adjustments to quoted prices due to cost increases, market fluctuations, supply chain disruptions, third party supplier changes in cost, general contractor delays, or any other factors outside of TriMark's control.

**C. STANDARD PAYMENT TERMS**

Will be agreed prior to order placement.

**D. RELEASE OF ORDERS**

Orders will not be released by Trimark for shipment if payment has not been received per the agreed terms or within 10 days prior to the projected delivery date.

**E. CUSTOM ITEM PRODUCTION**

Certain fabricated items may not be placed in production until field measurements have been confirmed and signed off on by the customer.

**F. JOB SITE READINESS**

If the job site is not ready at the time of the initial scheduled delivery, re-delivery and/or storage charges will apply

**G. EQUIPMENT INSTALLATION (If quoted):**

**INCLUDED SERVICES:**

Warehouse, deliver to the work site, uncrate, move to assigned locations, assemble, set-in-place, and make ready for final hook-ups (final hook-ups by others). Installation services are limited to items supplied by Trimark.

**NOT INCLUDED UNLESS SPECIFICALLY NOTED OTHERWISE:**

Our installation proposal does not include any plumbing, electrical, carpentry, HVAC, rough in or final connection services.

**The following to updates to Trimark's Terms Conditions are herein added for this order and supersede any existing/conflicting language.**

*This proposal will be governed and construed in accordance with the laws of the State of Illinois, without regard to any conflicts of law provisions. Venue for all actions between the parties shall lie solely in the Circuit Court of Cook County, Illinois. TriMark hereby agrees to this exclusive venue, to personal jurisdiction of this court, and to service of process in accordance with its rules of civil procedure, and TriMark waives any objection that this venue is not convenient. Any references to binding arbitration, the waiver of the right to a jury trial, or the waiver of claims which may be litigated on a class or representative basis shall be deleted from the Terms of Sale as it currently exists or as it may be modified or amended in the future.*

**The parties agree that the following language is deleted from the Trimark Terms and Conditions for the purposes of this order:**

*"The parties specifically agree that no signature shall be required in order for this Quote or its applicable terms and conditions to be deemed legally binding and enforceable on Customer where the intent to be so bound can be inferred (including by acceptance or retention of products or services), notwithstanding contrary requirements under any law."*

NO INFO ON THIS PAGE - JUST NEED INITIALS

**PRICE ADJUSTMENTS**

Prices may not reflect applicable tariffs, duties, import fees, taxes, or other governmental charges. TriMark reserves the right to correct or adjust quoted prices at any time due to tariffs, market fluctuations, supply chain disruptions, third-party supplier cost changes, general contractor delays, or any other factors outside of TriMark’s control. TriMark will use commercially reasonable efforts to hold pricing for (7) seven calendar days from the date of the quote; however, all pricing remains subject to correction or adjustment as set forth above, including during the seven-day hold period.

**TRIMARK RETURN POLICY**

All returns must be unused, undamaged and in their original packaging. All returns are subject to inspection. If a returned item is not in its original packaging, the customer will be responsible for the repackaging cost. If a returned item is damaged or cannot be sold as new, partial or no credit will be provided based on the condition of the item(s). Please contact your TriMark representative to initiate a return.

Custom fabricated and made-to-order items are non-cancellable and non-returnable unless the return is due to TriMark’s mistake. This includes any product that has custom configurations or accessories.

Stock Supplies and Equipment can be returned within 30 days of delivery for a refund of the selling price and any taxes paid. Return freight charges are the responsibility of the customer.

Non-Stock, non-custom Supplies and Equipment may be returned to the OEM subject to their return policy for a refund of the selling price plus any taxes paid. The customer is responsible for return freight charges and a minimum 30% restocking fee.

**TRIMARK TERMS AND CONDITIONS OF SALE**

This Quote shall be subject to TriMark’s Terms of Sale (<http://www.trimarkusa.com/SiteMedia/SiteResources/Terms/TriMark-Terms-and-Conditions-of-Sale.pdf>), which are incorporated herein by reference and shall govern.

The parties specifically agree that no signature shall be required in order for this Quote or its applicable terms and conditions to be deemed legally binding and enforceable on Customer where the intent to be so bound can be inferred (including by acceptance or retention of products or services), notwithstanding contrary requirements under any law.

Acceptance: \_\_\_\_\_ Date: \_\_\_\_\_

Printed Name: \_\_\_\_\_

Project Grand Total: \$15,843.81



# BEVERAGE-AIR®

PROJECT: \_\_\_\_\_  
 ITEM # \_\_\_\_\_ QTY: \_\_\_\_\_  
 MODEL # \_\_\_\_\_  
 AIA # \_\_\_\_\_ SIS # \_\_\_\_\_  
 APPROVED: \_\_\_\_\_

## VUEMAX™ OPEN-AIR MERCHANDISER

### Model: VMHCSL-18-1-W

SLIM MODEL / WHITE EXTERIOR



**3 Year Parts/Labor Warranty**  
**5 Year Compressor Warranty**

### CABINET CONSTRUCTION

- White vinyl wrapped exterior
- Interior is painted steel for easy cleaning
- Electronic temperature control
- LowE double-pane glass tempered thermal sides
- Foamed in place CFC free polyurethane insulation enhances the structural strength of the cabinet and helps increase energy efficiency
- Shelves included can be installed in 2 positions for display flexibility
- Price tag molding
- Night curtain comes standard and helps save energy and maintain cabinet temperature
- Intended for use in rooms having ambient condition or 75°F/55% humidity
- LED lighting standard
- Certified for bottled beverages and packaged food product
- 6" Adjustable legs



### OPTIONS & ACCESSORIES

- Front display merchandiser
- WonderBar/peg bar merchandiser
- 3" Casters
- 5" Casters
- Security cage with lock

### REFRIGERATION SYSTEM

- Uses environmentally friendly, energy efficient R290 refrigerant, and meets all regulatory requirements for CARB, SNAP, DOE & more
- Maintenance free condenser slides out for easy service
- Automatic defrost
- Maintains product temperature between 36°F and 40°F

3779 Champion Blvd., Winston-Salem, NC 27105  
 888-845-9800 Fax: 336-245-6453  
 Beverage-Air.com Sales@bevair.com



Please verify qualifying units by visiting:  
[www.energystar.gov/cfs](http://www.energystar.gov/cfs)

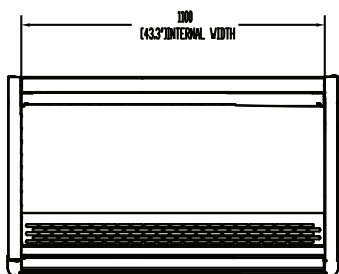
Specifications are subject to change without prior notice.  
 Date Issued 8/25 Printed in U.S.A.

# BEVERAGE-AIR®

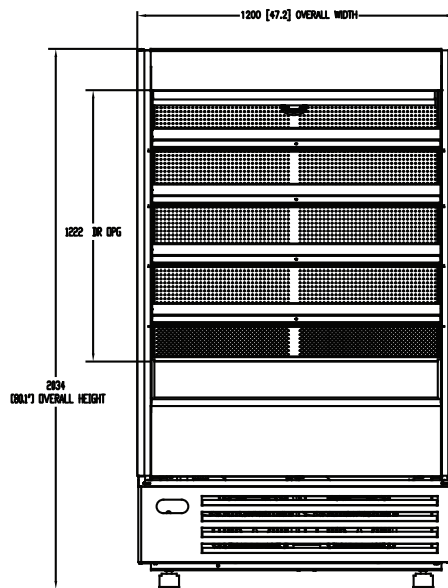
## VUEMAX™ OPEN-AIR MERCHANDISER

Model: VMHCSL-18-1-W

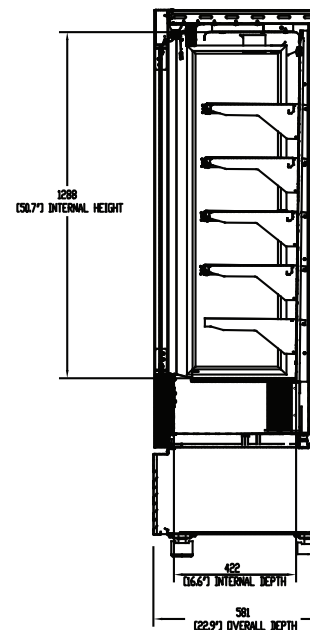
PLAN VIEW



ELEVATION VIEW



SIDE VIEW



### EXTERNAL DIMENSIONAL DATA

Width Overall (in)	47 1/16"
Depth Overall (in)	24 9/32"
Height Overall (in)	83 1/2"

### INTERNAL DIMENSIONAL DATA

NET Capacity (cubic ft.)	23
Internal Width Useable (in)	43 5/32"
Internal Depth Overall (in)	22 25/32"
Internal Height Overall (in)	50 3/4"
Number of Shelves	5
Shelves Depth	12"
Shelves Width	42 1/5"

We reserve the right to change specifications and product design without notice. Such revisions do not entitle the buyer to corresponding changes, improvements, additions or replacements for previously purchased equipment. Dimensional tolerances +/- 1/4". Metric dimensions (MM).

### ELECTRICAL DATA

Full Load Amps	12
Voltage	120/60/1
Nema Plug (8' cord)	5-20P

### REFRIGERATION DATA

Horsepower	120/60/1
Capacity (BTU/Hr)	5400
Heat Rejection (BTU/Hr)	8250
Charge (lbs/grams/ounces)	0.5732 / 260 / 9.2

### SHIPPING DATA

Gross Weight - Crated	500 lbs.
Height - Crated (in)	83"
Width - Crated (in)	50"
Depth - Crated (in)	27"

### ELECTRICAL CONNECTION



120/60/1  
NEMA 5-20P

Unit pre-wired at factory and include 8' long cord and plug set.

3779 Champion Blvd., Winston-Salem, NC 27105 | 888-845-9800 | Fax: 336-245-6453 | Beverage-Air.com | Sales@bevair.com

Date Issued 8/25 | Printed in U.S.A.





We put space to work.

Item # \_\_\_\_\_

Job \_\_\_\_\_

## Super Erecta® Shelf Wire Shelving



- **Unique Design:** The open wire design of these shelves minimizes dust accumulation and allows free circulation of air, greater visibility of stored items and greater light penetration.
- **Durable Construction:** Super Erecta shelves and posts are constructed of heavy-gauge carbon steel or Type 304 stainless steel.
- **Choice of Finishes:** Super Erecta Brite™ and chrome-plated for dry storage; Metroseal™ Epoxy (green or gray), and Type 304 stainless steel for corrosive environments; and attractive epoxy color options for merchandising applications.
- **Metroseal:** Proprietary rust-resistant finish is a durable epoxy coating over a protective zinc substrate. Metroseal contains Microban® antimicrobial product protection which continuously fights the growth of bacteria, mold, and mildew that cause stains and odors. 12-year limited warranty against rust and corrosion.
- **Versatile:** Super Erecta® Shelf wire shelving can adapt to your changing needs. By using various accessories, hundreds of shelving configurations become possible.
- **Fast, Secure Assembly:** SiteSelect® Posts have a double groove visual guide feature every 8" (203mm), circular grooves at 1" (25mm) increments, and are numbered at 2" (50mm) intervals. A patented, tapered split sleeve snaps together around each post. Tapered openings in the shelf corners slide over the tapered split sleeves providing a positive lock. Shelf is assembled in minutes without the use of any special tools.
- **Adjustability:** Shelves can be adjusted at 1" (25mm) intervals along the entire length of the post.
- **Shelf Ribs:** Run front to back, allowing you to slide items on and off shelves smoothly.
- **Shelf Accessibility:** Shelves can be loaded/unloaded easily from all sides. This open construction allows maximum use of storage cube.
- **Adjustable Feet:** Bolt levelers compensate for surface irregularities.

**Note:** Stainless stationary posts are equipped with stainless steel leveling feet.



Super Erecta Chrome Wire



Super Erecta with Metroseal



Gray Metroseal Epoxy  
Finish with Microban



Green Metroseal Epoxy  
Finish with Microban



**InterMetro Industries Corporation**  
North Washington Street, Wilkes-Barre, PA 18705  
Product Information. U.S. and Canada: 1.800.992.1776  
Outside U.S. and Canada: www.metro.com/contactus

L02-006e  
Printed in U.S.A. 6/20

Information and specifications are subject to change without notice. Please confirm at time of order.

Copyright © 2020 InterMetro Industries Corp.



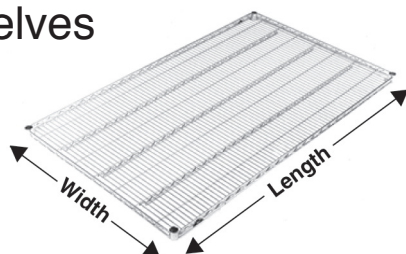
Super Erecta® Shelf Wire Shelving

10.01



# Super Erecta® Shelf Wire Shelving

## Wire Shelves



Aluminum Split Sleeve

- See spec sheet 10.14 for epoxy color options.
- Plastic split sleeves are included with each shelf  
Replacements are available: Cat. No. **9985** (bag of 4)
- Aluminum split sleeves are recommended for abusive mobile applications. Sleeves with stainless C-rings must be used for cart wash applications (exceeding 200°F/93°C) and for all autoclave applications.  
Cat. No. **9986Z** (bag of 4 with zinc C-rings)  
Cat. No. **9986S** (bag of 4 with stainless steel C-rings)
- Weight capacity (evenly distributed) per shelf  
800 lbs. (363kg) for lengths of 18" to 48" (457 to 1219mm)  
600 lbs. (272kg) for lengths of 54" (1370mm) or longer
- Weight capacity (evenly distributed) per unit.  
Stationary shelving units have a maximum load capacity (evenly distributed) of 2,000 lbs. (907kg). Mobile units have a maximum capacity of three times the caster load rating up to but not exceeding 1,000 lbs. (453kg) total. Consult the Metro catalog for caster load ratings.

Cat. No. Super Erecta Brite	Cat. No. Chrome	Cat. No. Metroseal Green (K3) with Microban	Cat. No. Metroseal Gray (K4) with Microban	Cat. No. Stainless	Nominal Width/Length		Approx. Pkd. Wt.	
					(in.)	(mm)	(lbs.)	(kg)
1424BR	1424NC	1424NK3	1424NK4	1424NS	14x24	355x610	5.3	2.4
1430BR	1430NC	1430NK3	1430NK4	1430NS	14x30	355x760	6.3	2.8
1436BR	1436NC	1436NK3	1436NK4	1436NS	14x36	355x914	7.5	3.4
1442BR	1442NC	1442NK3	1442NK4	1442NS	14x42	355x1066	8.3	3.8
1448BR	1448NC	1448NK3	1448NK4	1448NS	14x48	355x1219	9.4	4.3
1460BR	1460NC	1460NK3	1460NK4	1460NS	14x60	355x1524	11.8	5.4
1472BR	1472NC	1472NK3	1472NK4	1472NS	14x72	355x1829	14.4	6.5
-	1818NC	1818NK3	1818NK4	-	18x18	457x457	5.3	2.4
1824BR	1824NC	1824NK3	1824NK4	1824NS	18x24	457x610	6.1	2.7
1830BR	1830NC	1830NK3	1830NK4	1830NS	18x30	457x760	7.1	3.2
1836BR	1836NC	1836NK3	1836NK4	1836NS	18x36	457x914	8.2	3.7
1842BR	1842NC	1842NK3	1842NK4	1842NS	18x42	457x1066	9.3	4.2
1848BR	1848NC	1848NK3	1848NK4	1848NS	18x48	457x1219	10.7	4.9
1854BR	1854NC	1854NK3	1854NK4	1854NS	18x54	457x1370	11.9	5.4
1860BR	1860NC	1860NK3	1860NK4	1860NS	18x60	457x1524	13.4	6.1
1872BR	1872NC	1872NK3	1872NK4	1872NS	18x72	457x1829	14.6	6.6
2124BR	2124NC	2124NK3	2124NK4	2124NS	21x24	530x610	10.1	4.6
2130BR	2130NC	2130NK3	2130NK4	2130NS	21x30	530x760	10.5	4.8
2136BR	2136NC	2136NK3	2136NK4	2136NS	21x36	530x914	10.7	4.9
2142BR	2142NC	2142NK3	2142NK4	2142NS	21x42	530x1066	11.5	5.2
2148BR	2148NC	2148NK3	2148NK4	2148NS	21x48	530x1219	11.9	5.4
2154BR	2154NC	2154NK3	2154NK4	2154NS	21x54	530x1370	12.9	5.8
2160BR	2160NC	2160NK3	2160NK4	2160NS	21x60	530x1524	13.4	6.1
2172BR	2172NC	2172NK3	2172NK4	2172NS	21x72	530x1829	14.4	6.5
2424BR	2424NC	2424NK3	2424NK4	2424NS	24x24	610x610	6.5	3.0
2430BR	2430NC	2430NK3	2430NK4	2430NS	24x30	610x760	8.3	3.8
2436BR	2436NC	2436NK3	2436NK4	2436NS	24x36	610x914	10.1	4.6
2442BR	2442NC	2442NK3	2442NK4	2442NS	24x42	610x1066	11.9	5.4
2448BR	2448NC	2448NK3	2448NK4	2448NS	24x48	610x1219	14.2	6.4
2454BR	2454NC	2454NK3	2454NK4	2454NS	24x54	610x1370	16.1	7.3
2460BR	2460NC	2460NK3	2460NK4	2460NS	24x60	610x1524	18.0	8.2
2472BR	2472NC	2472NK3	2472NK4	2472NS	24x72	610x1829	21.4	9.7

**Note:** The actual length of the shelves is 1/8" (3.2mm) shorter than the nominal dimension shown. The actual depth of the shelves is 1/8" (3.2mm) greater than the nominal dimension shown.

**Note:** The following restrictions apply to shelving units that utilize 14" (355mm) wide shelves:  
Free-standing units: Units taller than 63" (1600mm) must be properly fastened to the floor or wall using Metro foot plates or wall brackets.  
Mobile units: maximum allowable post height is 54" (1370mm).



# Super Erecta® Shelf Wire Shelving

## SiteSelect® Posts

**Stationary Posts** - Equipped with a leveling bolt to account for uneven floors.

- Height includes leveling bolt (completely tightened) and post cap. Leveling bolt can be adjusted 0.5" (13mm).
- Foot plates may be ordered separately and installed in place of leveling foot.
- Replacement leveling bolts: Zinc Cat. No. **RPF04-004**, Stainless Steel Cat. No. **RPF04-004C**
- Replacement post cap for standard posts: Black Cat. No. **RPC06-035**



SiteSelect Posts feature double grooves every 8" (203mm) to aid assembly.

Cat. No. Chrome	Cat. No. Metroseal Green (K3) with Microban	Cat. No.. Metroseal Gray (K4) with Microban	Cat. No. Stainless Steel	Actual Height		Approx. Pkd. Wt.	
				(in.)	(mm)	(lbs.)	(kg)
<b>7P</b>	<b>7PK3</b>	<b>7PK4</b>	-	7.375	187	0.5	0.3
<b>13P</b>	<b>13PK3</b>	<b>13PK4</b>	<b>13PS</b>	14.375	365	1	0.5
<b>27P</b>	<b>27PK3</b>	<b>27PK4</b>	<b>27PS</b>	28.375	720	1.75	0.75
<b>33P</b>	<b>33PK3</b>	<b>33PK4</b>	<b>33PS</b>	34.375	873	2	0.9
<b>54P</b>	<b>54PK3</b>	<b>54PK4</b>	<b>54PS</b>	54.4375	1382	3	1.4
<b>63P</b>	<b>63PK3</b>	<b>63PK4</b>	<b>63PS</b>	62.4375	1585	3.5	1.6
<b>74P</b>	<b>74PK3</b>	<b>74PK4</b>	<b>74PS</b>	74.5	1892	4	1.8
<b>86P</b>	<b>86PK3</b>	<b>86PK4</b>	<b>86PS</b>	86.5	2197	5	2.3
<b>*96P</b>	-	-	-	96.5	2450	5.5	2.5

\*96P should not be used on units less than 24" (610mm) deep. Consult Metro Engineering for alternate recommendations.



Stationary Post



Post for Stem Caster

## Mobile Posts (For use with Stem Casters)

- Height includes post cap.

Cat. No. Chrome	Cat. No. Metroseal Green (K3) with Microban	Cat. No. Metroseal Gray (K4) with Microban	Cat. No. Stainless Steel	Actual Height		Approx. Pkd. Wt.	
				(in.)	(mm)	(lbs.)	(kg)
<b>13UP</b>	<b>13UPK3</b>	<b>13UPK4</b>	<b>13UPS</b>	13.75	349	1	0.5
<b>27UP</b>	<b>27UPK3</b>	<b>27UPK4</b>	<b>27UPS</b>	27.75	704	1.75	0.75
<b>33UP</b>	<b>33UPK3</b>	<b>33UPK4</b>	<b>33UPS</b>	33.75	857	2	0.9
<b>54UP</b>	<b>54UPK3</b>	<b>54UPK4</b>	<b>54UPS</b>	53.8125	1366	3	1.4
<b>63UP</b>	<b>63UPK3</b>	<b>63UPK4</b>	<b>63UPS</b>	61.8125	1570	3.5	1.6
-	<b>70UPK3</b>	<b>70UPK4</b>	-	69.75	1771	3.75	1.7
<b>74UP</b>	<b>74UPK3</b>	<b>74UPK4</b>	<b>74UPS</b>	73.875	1876	4	1.8
<b>86UP</b>	<b>86UPK3</b>	<b>86UPK4</b>	<b>86UPS</b>	85.875	2181	4.5	2.0

## Special Length Posts

Cut posts are available. Consult your Metro representative for more information.

## Staked Posts (For use with Truck Dollies)

- Each post connects to the truck dolly through the stem receptacle. The stem receptacle is staked into the bottom of the post to ensure a durable connection in abusive mobile applications. Each includes a leveling/connecting bolt.

Cat. No. Chrome	Cat. No. Stainless Steel	Actual Height		Approx. Pkd. Wt.	
		(in.)	(mm)	(lbs.)	(kg)
<b>54P-STKD</b>	<b>54PS-STKD</b>	54.4375	1382	3	1.4
<b>63P-STKD</b>	<b>63PS-STKD</b>	62.4375	1585	3.5	1.6
<b>74P-STKD</b>	<b>74PS-STKD</b>	74.5	1892	4	1.8



Staked Post



Swaged Post

## Swaged Posts (For use with Stem Casters in Cart Wash Applications)

- Each post has an aluminum cap swaged into the top of the post.

Cat. No. Stainless Steel	Actual Height		Approx. Pkd. Wt.	
	(in.)	(mm)	(lbs.)	(kg)
<b>33UPS-SW</b>	33.75	857	2	.9
<b>54UPS-SW</b>	53.8125	1366	3	1.4
<b>63UPS-SW</b>	61.8125	1570	3.5	1.6

Job \_\_\_\_\_



We put space to work.

## Super Erecta Shelf® Wire Shelving

### Super Wide Shelving

- **High-density Storage:** Super Wide shelves have a greater storage area for holding large quantities of supplies, especially large, bulky objects, providing maximum storage in minimum space.

- **Load Capacity (evenly distributed) per shelf:**

Depths: 30" and 36" (760 and 914mm)

800 lbs. (363kg) for lengths 48" (1219mm) or shorter.

600 lbs. (272kg) for lengths 54" (1370mm) or longer.

Cat. No. Chrome	Cat. No. Metroseal Green (K3) with Microban	Cat. No.. Metroseal Gray (K4) with Microban	Cat. No. Stainless Steel	Nominal Width/Length		Approx. Pkd. Wt.	
				(in.)	(mm)	(lbs.)	(kg)
<b>3036NC</b>	<b>3036NK3</b>	<b>3036NK4</b>	<b>3036NS</b>	30x36	760x914	14.2	6.4
<b>3048NC</b>	<b>3048NK3</b>	<b>3048NK4</b>	<b>3048NS</b>	30x48	760x1219	17.7	8.0
<b>3060NC</b>	<b>3060NK3</b>	<b>3060NK4</b>	<b>3060NS</b>	30x60	760x1524	20.2	9.2
<b>3072NC</b>	<b>3072NK3</b>	<b>3072NK4</b>	<b>3072NS</b>	30x72	760x1829	22.7	10.3
<b>3636NC</b>	<b>3636NK3</b>	-	<b>3636NS</b>	36x36	910x914	16.7	7.6
<b>3648NC</b>	<b>3648NK3</b>	-	<b>3648NS</b>	36x48	910x1219	21.6	9.8
<b>3660NC</b>	<b>3660NK3</b>	-	<b>3660NS</b>	36x60	910x1524	26.4	12.0
<b>3672NC</b>	<b>3672NK3</b>	-	<b>3672NS</b>	36x72	910x1829	31.6	14.3

**Note:** The actual length of the shelves is 1/8" (3.2mm) shorter than the nominal dimension shown. The actual depth of the shelves is 1/8" (3.2mm) greater than the nominal dimension shown.



### Foot Plates

- Use to bolt units to the floor, or when a broader, more stable foot is desired. Foot plates also help to protect floors by distributing the point load of the shelving unit across a larger contact point.
- Foot plates (completely tightened) add .125" (3mm) to the specified heights of each stationary post on the table.

Zinc Cat. No. **9993Z**

Stainless Steel Cat. No. **9993S**



### "S" Hook

- Used to add on shelving units with only two posts required. Order two per shelf level.

Cat. No. **9995Z**



an Ali Group Company



The Spirit of Excellence



Item # \_\_\_\_\_

We put space to work.

Job \_\_\_\_\_

## Super Erecta Pro®

### Durable and Cleanable. The original — reinnovated.

Corrosion resistant shelving constructed of removable polymer open grid shelf mats over a wire shelf frame. Shelf frames and posts have Metroseal epoxy coating over an electroplated substrate. Shelves with polymer mats offer a 15 year limited warranty against corrosion, while posts offer a 12 year warranty against corrosion. Microban® antimicrobial product protection is built into the frames, shelf mats, and posts. Shelf has a rigid four-sided frame with center truss(es). Robust corner provides complete 360° capture of the split sleeves and post for added stability. Stationary units have maximum capacity of 2,000 lbs. (907kg) evenly distributed. Mobile units (with stem casters) offer a maximum total unit load of 900 lbs. (408kg). Units assemble easily — shelves mount on split sleeves along grooved, numbered posts and adjust on 1" (25mm) increments.

- **Prolonged durability:** Polymer shelf mats are corrosion proof and impact resistant. They will not chip, rust, or corrode.
- **Easy to clean:** Removable polymer shelf mats can easily be lifted off the shelf frames for cleaning in sinks or wash/dish machines.

- **Strong and robust:** Steel corners, side and center supports assure a sturdy and stable weight bearing surface.

Weight capacities for evenly distributed loads:

800 lbs. (363kg) per shelf for lengths of 24" to 48" (610 to 1220mm)

600 lbs. (275kg) per shelf for lengths of 54" (1370mm) or longer

2,000 lbs. (907kg) maximum per stationary unit.

- **Interchangeable:** Super Erecta Pro shelves are compatible on the same shelving units with other Super Erecta shelving options: Super Erecta wire, Super Adjustable Super Erecta, Solid Super Erecta shelves, Dunnage shelves, Cantilever shelves. Super Erecta Pro Shelves can be used with Post-Type Wall Mounts, Direct Wall Mounts, SmartWall Wall Mounts, Security Units, Top Track, and qwikTRAK systems.
- **Microban Product Protection:** Microban antimicrobial product protection is built into the shelf mats and the Metroseal 3 epoxy coating to protect the product from bacteria, mold, mildew, and fungus that cause odors and product degradation. Microban protection keeps the product "cleaner between cleanings".
- **Efficient use of storage space:** Shelves can be adjusted at 1" (25mm) increments along the post to maximize the use of available vertical storage space.
- **Open Grid Shelf Mats:** Open grid shelves promote air circulation and light penetration.
- **Fast, Easy Assembly:** Super Erecta Pro units assemble easily in minutes, without tools. SiteSelect posts have numbered grooves and feature unique double grooves every 8" (203mm) to help position the shelves.
- **Warranty against rust and corrosion:** Shelves with polymer shelf mats – 15 years. Posts – 12 years. Shelf mats are constructed of polypropylene and will never rust.

\*MICROBAN® and the MICROBAN® symbol are registered trademarks of the Microban Products Company, Huntersville, NC.



For stem casters,  
see catalog sheet #11.20



SUPPORTS GOOD  
**HACCP**  
PROCESSES

All Metro Catalog Sheets are available on our website: [www.metro.com](http://www.metro.com)



**InterMetro Industries Corporation**  
North Washington Street, Wilkes-Barre, PA 18705  
Product Information. U.S. and Canada: 1.800.992.1776  
Outside U.S. and Canada: [www.metro.com/contactus](http://www.metro.com/contactus)

L02-184  
Printed in U.S.A. Rev. 9/21

Information and specifications are subject to change without notice. Please confirm at time of order.

Copyright © 2021 InterMetro Industries Corp.



**Super Erecta Pro® Shelves**

**10-80**

Job \_\_\_\_\_

10-80

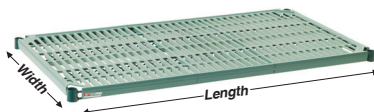


# Super Erecta Pro® Shelves

We put space to work.®

## Standard Shelves

- Part number includes shelf with removable polymer shelf mats and one bag of split sleeves



**Actual Dimensions:** Width: Add 1/4" (6mm) to nominal size. Length: Subtract 1/4" (6mm) from nominal size.

**Note:** Polymer Shelf mats are designed to fit Super Erecta Pro shelves and cannot be retrofitted to Super Erecta wire shelves.

**Replacement Split Sleeves**  
Model No. 9985 (Bag of four sets.)

Nominal Width/Length (in./mm)	Approx. Pkd. Wt. (lbs./kg)	Model No. SE Pro Metroseal 3
14x24	355x610	4.5 2.0 PR1424NK3
14x30	355x760	6.3 2.9 PR1430NK3
14x36	355x914	8.0 3.6 PR1436NK3
14x42	355x1060	10.0 4.5 PR1442NK3
14x48	355x1219	11.9 5.4 PR1448NK3
14x60	355x1524	14.9 6.8 PR1460NK3
14x72	355x1829	18.3 8.3 PR1472NK3
18x24	457x610	6.0 2.7 PR1824NK3
18x30	457x760	7.8 3.5 PR1830NK3
18x36	457x914	9.5 4.2 PR1836NK3
18x42	457x1060	11.3 5.0 PR1842NK3
18x48	457x1219	13.0 5.8 PR1848NK3
18x54	457x1372	14.8 6.6 PR1854NK3
18x60	457x1524	16.5 7.4 PR1860NK3
18x72	457x1829	19.8 8.8 PR1872NK3
21x24	530x610	8.0 3.6 PR2124NK3
21x30	530x760	9.5 4.2 PR2130NK3
21x36	530x914	11.3 5.0 PR2136NK3
21x42	530x1060	12.5 5.6 PR2142NK3
21x48	530x1219	14.3 6.4 PR2148NK3
21x54	530x1372	16.5 7.4 PR2154NK3
21x60	530x1524	18.3 8.1 PR2160NK3
21x72	530x1829	21.5 9.6 PR2172NK3
24x24	610x610	9.5 4.2 PR2424NK3
24x30	610x760	11.3 5.0 PR2430NK3
24x36	610x914	13.0 5.8 PR2436NK3
24x42	610x1060	14.0 6.3 PR2442NK3
24x48	610x1219	15.5 6.9 PR2448NK3
24x54	610x1372	18.3 8.1 PR2454NK3
24x60	610x1524	20.0 8.9 PR2460NK3
24x72	610x1829	23.3 10.4 PR2472NK3

## Specifications

- Shelf frames:** Carbon steel with Metroseal 3 epoxy coating.
  - Polymer Shelf mats:** polypropylene.
  - Microban antimicrobial product protection** is built into the polymer shelf mats and Metroseal 3 epoxy coating.
  - NSF listed for all environments.**
  - Continuous Temperature:** Super Erecta Pro Shelves can be used continuously within a range of -20/120° F (-29/49° C). For cleaning only, the unloaded product or shelf mats may be intermittently exposed to temperatures up to 200° F (93° C).
- NOTE:** Not suitable for cart wash applications.

## SHELVING HEIGHT GUIDELINES

Shelf Depth	14" (356mm)	18" (457mm)	21" (533mm)	24" (610mm)
Maximum Post Height Allowable	63" (1600mm)	86" (2184mm)	86" (2184mm)	96" (2438mm)
Stationary	63" (1600mm)	86" (2184mm)	86" (2184mm)	96" (2438mm)
Mobile	54" (1372mm)	74" (1880mm)	74" (1880mm)	86" (2184mm)

Note: 14" deep stationary shelving taller than 63" must be fastened to the floor or wall. For stationary units with foot plates or wall brackets properly attached to the floor or wall, the maximum allowable height is 96" (2438mm). See spec sheet 10.81 for options.

## SiteSelect Posts

Stationary post height includes leveling bolt.

### STATIONARY

Actual Height (in./mm)	Approx. Pkd. Wt. (lbs./kg)	Model No. Metroseal 3	Model No. Stainless
14 1/2	370	1.0 0.5	13PK3 13PS
34 1/2	875	2.0 0.9	33PK3 33PS
54 9/16	1385	3.0 1.4	54PK3 54PS
62 9/16	1590	3.5 1.6	63PK3 63PS
—	—	—	—
74 5/8	1895	4.0 1.8	74PK3 74PS
86 5/8	2200	5.0 2.3	86PK3 86PS

### MOBILE (For use with stem casters)

Actual Height (in./mm)	Approx. Pkd. Wt. (lbs./kg)	Model No. Metroseal 3	Model No. Stainless
13 3/4	349	1.0 0.5	13UPK3 13UPS
33 3/4	857	2.0 0.9	33UPK3 33UPS
53 13/16	1366	3.0 1.4	54UPK3 54UPS
61 13/16	1570	3.5 1.6	63UPK3 63UPS
69 3/4	1772	3.8 1.7	70UPK3 —
73 7/8	1876	4.0 1.8	74UPK3 74UPS
85 7/8	2181	5.0 2.3	86UPK3 86UPS

**NOTE:** Special length posts are available. Consult your Metro representative.

**"S" Hook:** Used to "add on" one or multiple Super Erecta Pro shelving units while eliminating the cost of two posts per unit. Can be used to join units end-to-end, back-to-back, at right angles, etc. Two "S" hooks are required for each shelf.

**Model No. Q9995Z**

### Notes about "add-on" units.

- Add-on (Adjacent) units must be configured entirely of one style of shelf. (Example: Adjacent unit may be configured entirely of Super Erecta Pro OR entirely of Super Erecta Wire/Super Adjustable shelves.)
- To connect an adjacent Super Erecta or Super Adjustable Super Erecta wire shelving unit to a Super Erecta Pro unit using S-hooks, the adjacent unit must use S-hook model number Q9995Z.
- A mixed shelving unit having a combination of Super Erecta Pro, Super Erecta wire, and Super Adjustable cannot be connected to another unit with "S" Hooks.



Super Erecta Pro® Shelves

an Ali Group Company



The Spirit of Excellence





JOB:  
ITEM:  
QTY:



## UTILITY/BUSSING CART

### APPLICATION:

These carts are designed for various tasks such as serving, bussing, and general utility. These three shelf units have three lips up and on lip down to help hold products on shelves.

### MATERIAL:

Framework is constructed of 1"x1"x.070" wall tubing. Shelves are constructed of .080" aluminum sheet.

### CASTERS:

These carts come equipped with four 5" stem type swivel casters.

### GUARANTEE:

These carts carry a **Lifetime Guarantee** against rust and corrosion and also carry a **Five-Year Guarantee** against workmanship and material defects.

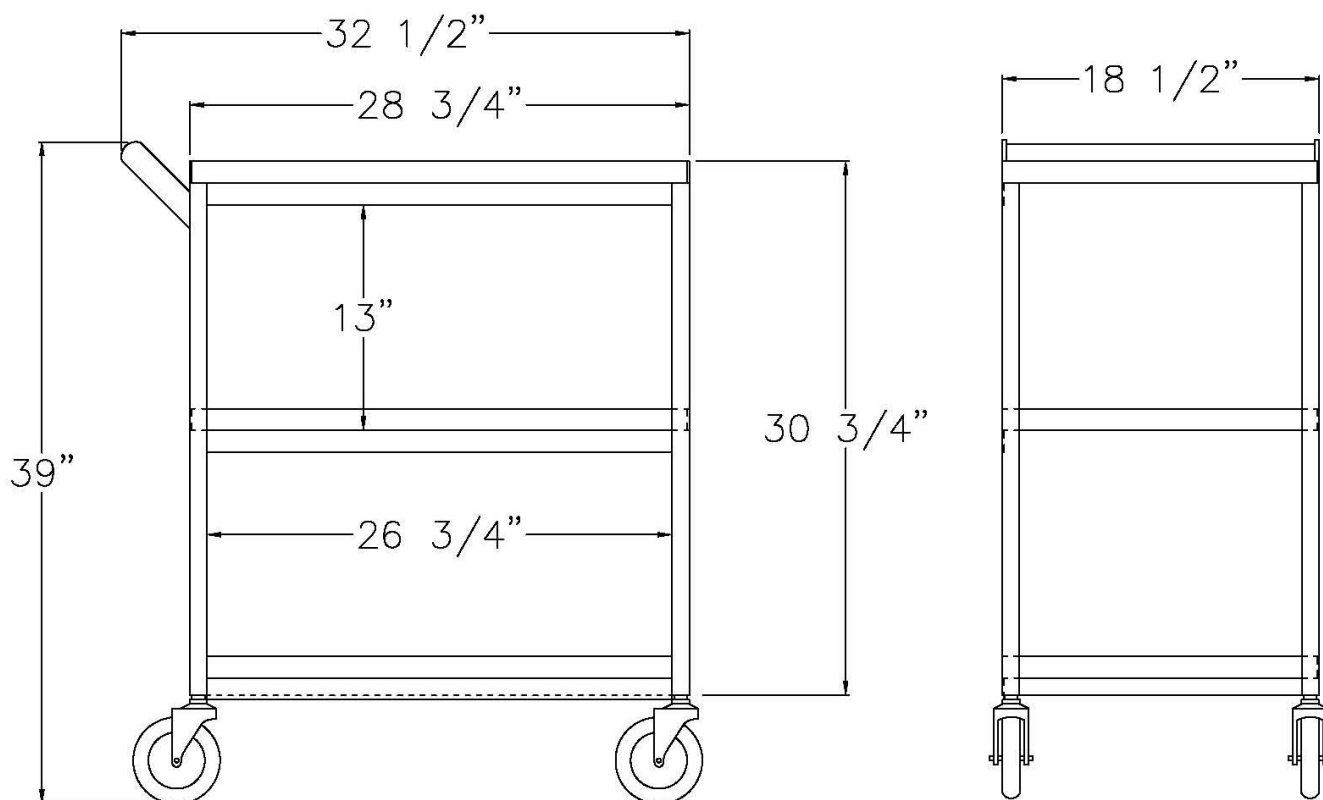


**Model #NS745**



Phone:800-255-0104  
Fax: 877-877-7687  
[www.newageindustrial.com](http://www.newageindustrial.com)  
[sales@newageindustrial.com](mailto:sales@newageindustrial.com)

New Age Industrial reserves the right to modify or make changes at any time without notice to materials and specifications.



**Model #NS745**

Model No.	Size-W	Size-H	Size-D	Shelf Size	Shelf Spacing
NS745	18 1/2"	39"	32 1/2"	18 1/2"X28 3/4"	13"
1440	16 1/2"	39"	27 3/4"	16 1/2"X24"	13"



Phone:800-255-0104  
 Fax: 877-877-7687  
[www.newageindustrial.com](http://www.newageindustrial.com)  
[sales@newageindustrial.com](mailto:sales@newageindustrial.com)

New Age Industrial reserves the right to modify or make changes at any time without notice to materials and specifications.



We put space to work.

Item # \_\_\_\_\_

Job \_\_\_\_\_

## Super Erecta® Shelf Wire Shelving



- **Unique Design:** The open wire design of these shelves minimizes dust accumulation and allows free circulation of air, greater visibility of stored items and greater light penetration.
- **Durable Construction:** Super Erecta shelves and posts are constructed of heavy-gauge carbon steel or Type 304 stainless steel.
- **Choice of Finishes:** Super Erecta Brite™ and chrome-plated for dry storage; Metroseal™ Epoxy (green or gray), and Type 304 stainless steel for corrosive environments; and attractive epoxy color options for merchandising applications.
- **Metroseal:** Proprietary rust-resistant finish is a durable epoxy coating over a protective zinc substrate. Metroseal contains Microban® antimicrobial product protection which continuously fights the growth of bacteria, mold, and mildew that cause stains and odors. 12-year limited warranty against rust and corrosion.
- **Versatile:** Super Erecta® Shelf wire shelving can adapt to your changing needs. By using various accessories, hundreds of shelving configurations become possible.
- **Fast, Secure Assembly:** SiteSelect® Posts have a double groove visual guide feature every 8" (203mm), circular grooves at 1" (25mm) increments, and are numbered at 2" (50mm) intervals. A patented, tapered split sleeve snaps together around each post. Tapered openings in the shelf corners slide over the tapered split sleeves providing a positive lock. Shelf is assembled in minutes without the use of any special tools.
- **Adjustability:** Shelves can be adjusted at 1" (25mm) intervals along the entire length of the post.
- **Shelf Ribs:** Run front to back, allowing you to slide items on and off shelves smoothly.
- **Shelf Accessibility:** Shelves can be loaded/unloaded easily from all sides. This open construction allows maximum use of storage cube.
- **Adjustable Feet:** Bolt levelers compensate for surface irregularities.

**Note:** Stainless stationary posts are equipped with stainless steel leveling feet.



Super Erecta Chrome Wire



Super Erecta with Metroseal



Gray Metroseal Epoxy  
Finish with Microban



Green Metroseal Epoxy  
Finish with Microban



**InterMetro Industries Corporation**  
North Washington Street, Wilkes-Barre, PA 18705  
Product Information. U.S. and Canada: 1.800.992.1776  
Outside U.S. and Canada: www.metro.com/contactus

L02-006e  
Printed in U.S.A. 6/20

Information and specifications are subject to change without notice. Please confirm at time of order.

Copyright © 2020 InterMetro Industries Corp.



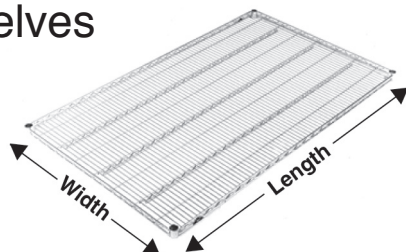
Super Erecta® Shelf Wire Shelving

10.01



# Super Erecta® Shelf Wire Shelving

## Wire Shelves



Aluminum Split Sleeve

- See spec sheet 10.14 for epoxy color options.
- Plastic split sleeves are included with each shelf  
Replacements are available: Cat. No. **9985** (bag of 4)
- Aluminum split sleeves are recommended for abusive mobile applications. Sleeves with stainless C-rings must be used for cart wash applications (exceeding 200°F/93°C) and for all autoclave applications.  
Cat. No. **9986Z** (bag of 4 with zinc C-rings)  
Cat. No. **9986S** (bag of 4 with stainless steel C-rings)
- Weight capacity (evenly distributed) per shelf  
800 lbs. (363kg) for lengths of 18" to 48" (457 to 1219mm)  
600 lbs. (272kg) for lengths of 54" (1370mm) or longer
- Weight capacity (evenly distributed) per unit.  
Stationary shelving units have a maximum load capacity (evenly distributed) of 2,000 lbs. (907kg). Mobile units have a maximum capacity of three times the caster load rating up to but not exceeding 1,000 lbs. (453kg) total. Consult the Metro catalog for caster load ratings.

Cat. No. Super Erecta Brite	Cat. No. Chrome	Cat. No. Metroseal Green (K3) with Microban	Cat. No. Metroseal Gray (K4) with Microban	Cat. No. Stainless	Nominal Width/Length		Approx. Pkd. Wt.	
					(in.)	(mm)	(lbs.)	(kg)
1424BR	1424NC	1424NK3	1424NK4	1424NS	14x24	355x610	5.3	2.4
1430BR	1430NC	1430NK3	1430NK4	1430NS	14x30	355x760	6.3	2.8
1436BR	1436NC	1436NK3	1436NK4	1436NS	14x36	355x914	7.5	3.4
1442BR	1442NC	1442NK3	1442NK4	1442NS	14x42	355x1066	8.3	3.8
1448BR	1448NC	1448NK3	1448NK4	1448NS	14x48	355x1219	9.4	4.3
1460BR	1460NC	1460NK3	1460NK4	1460NS	14x60	355x1524	11.8	5.4
1472BR	1472NC	1472NK3	1472NK4	1472NS	14x72	355x1829	14.4	6.5
-	1818NC	1818NK3	1818NK4	-	18x18	457x457	5.3	2.4
1824BR	1824NC	1824NK3	1824NK4	1824NS	18x24	457x610	6.1	2.7
1830BR	1830NC	1830NK3	1830NK4	1830NS	18x30	457x760	7.1	3.2
1836BR	1836NC	1836NK3	1836NK4	1836NS	18x36	457x914	8.2	3.7
1842BR	1842NC	1842NK3	1842NK4	1842NS	18x42	457x1066	9.3	4.2
1848BR	1848NC	1848NK3	1848NK4	1848NS	18x48	457x1219	10.7	4.9
1854BR	1854NC	1854NK3	1854NK4	1854NS	18x54	457x1370	11.9	5.4
1860BR	1860NC	1860NK3	1860NK4	1860NS	18x60	457x1524	13.4	6.1
1872BR	1872NC	1872NK3	1872NK4	1872NS	18x72	457x1829	14.6	6.6
2124BR	2124NC	2124NK3	2124NK4	2124NS	21x24	530x610	10.1	4.6
2130BR	2130NC	2130NK3	2130NK4	2130NS	21x30	530x760	10.5	4.8
2136BR	2136NC	2136NK3	2136NK4	2136NS	21x36	530x914	10.7	4.9
2142BR	2142NC	2142NK3	2142NK4	2142NS	21x42	530x1066	11.5	5.2
2148BR	2148NC	2148NK3	2148NK4	2148NS	21x48	530x1219	11.9	5.4
2154BR	2154NC	2154NK3	2154NK4	2154NS	21x54	530x1370	12.9	5.8
2160BR	2160NC	2160NK3	2160NK4	2160NS	21x60	530x1524	13.4	6.1
2172BR	2172NC	2172NK3	2172NK4	2172NS	21x72	530x1829	14.4	6.5
2424BR	2424NC	2424NK3	2424NK4	2424NS	24x24	610x610	6.5	3.0
2430BR	2430NC	2430NK3	2430NK4	2430NS	24x30	610x760	8.3	3.8
2436BR	2436NC	2436NK3	2436NK4	2436NS	24x36	610x914	10.1	4.6
2442BR	2442NC	2442NK3	2442NK4	2442NS	24x42	610x1066	11.9	5.4
2448BR	2448NC	2448NK3	2448NK4	2448NS	24x48	610x1219	14.2	6.4
2454BR	2454NC	2454NK3	2454NK4	2454NS	24x54	610x1370	16.1	7.3
2460BR	2460NC	2460NK3	2460NK4	2460NS	24x60	610x1524	18.0	8.2
2472BR	2472NC	2472NK3	2472NK4	2472NS	24x72	610x1829	21.4	9.7

**Note:** The actual length of the shelves is 1/8" (3.2mm) shorter than the nominal dimension shown. The actual depth of the shelves is 1/8" (3.2mm) greater than the nominal dimension shown.

**Note:** The following restrictions apply to shelving units that utilize 14" (355mm) wide shelves:  
Free-standing units: Units taller than 63" (1600mm) must be properly fastened to the floor or wall using Metro foot plates or wall brackets.  
Mobile units: maximum allowable post height is 54" (1370mm).



# Super Erecta® Shelf Wire Shelving

## SiteSelect® Posts

**Stationary Posts** - Equipped with a leveling bolt to account for uneven floors.

- Height includes leveling bolt (completely tightened) and post cap. Leveling bolt can be adjusted 0.5" (13mm).
- Foot plates may be ordered separately and installed in place of leveling foot.
- Replacement leveling bolts: Zinc Cat. No. **RPF04-004**, Stainless Steel Cat. No. **RPF04-004C**
- Replacement post cap for standard posts: Black Cat. No. **RPC06-035**



SiteSelect Posts feature double grooves every 8" (203mm) to aid assembly.

Cat. No. Chrome	Cat. No. Metroseal Green (K3) with Microban	Cat. No.. Metroseal Gray (K4) with Microban	Cat. No. Stainless Steel	Actual Height		Approx. Pkd. Wt.	
				(in.)	(mm)	(lbs.)	(kg)
<b>7P</b>	<b>7PK3</b>	<b>7PK4</b>	-	7.375	187	0.5	0.3
<b>13P</b>	<b>13PK3</b>	<b>13PK4</b>	<b>13PS</b>	14.375	365	1	0.5
<b>27P</b>	<b>27PK3</b>	<b>27PK4</b>	<b>27PS</b>	28.375	720	1.75	0.75
<b>33P</b>	<b>33PK3</b>	<b>33PK4</b>	<b>33PS</b>	34.375	873	2	0.9
<b>54P</b>	<b>54PK3</b>	<b>54PK4</b>	<b>54PS</b>	54.4375	1382	3	1.4
<b>63P</b>	<b>63PK3</b>	<b>63PK4</b>	<b>63PS</b>	62.4375	1585	3.5	1.6
<b>74P</b>	<b>74PK3</b>	<b>74PK4</b>	<b>74PS</b>	74.5	1892	4	1.8
<b>86P</b>	<b>86PK3</b>	<b>86PK4</b>	<b>86PS</b>	86.5	2197	5	2.3
<b>*96P</b>	-	-	-	96.5	2450	5.5	2.5

\*96P should not be used on units less than 24" (610mm) deep. Consult Metro Engineering for alternate recommendations.



Stationary Post



Post for Stem Caster

## Mobile Posts (For use with Stem Casters)

- Height includes post cap.

Cat. No. Chrome	Cat. No. Metroseal Green (K3) with Microban	Cat. No. Metroseal Gray (K4) with Microban	Cat. No. Stainless Steel	Actual Height		Approx. Pkd. Wt.	
				(in.)	(mm)	(lbs.)	(kg)
<b>13UP</b>	<b>13UPK3</b>	<b>13UPK4</b>	<b>13UPS</b>	13.75	349	1	0.5
<b>27UP</b>	<b>27UPK3</b>	<b>27UPK4</b>	<b>27UPS</b>	27.75	704	1.75	0.75
<b>33UP</b>	<b>33UPK3</b>	<b>33UPK4</b>	<b>33UPS</b>	33.75	857	2	0.9
<b>54UP</b>	<b>54UPK3</b>	<b>54UPK4</b>	<b>54UPS</b>	53.8125	1366	3	1.4
<b>63UP</b>	<b>63UPK3</b>	<b>63UPK4</b>	<b>63UPS</b>	61.8125	1570	3.5	1.6
-	<b>70UPK3</b>	<b>70UPK4</b>	-	69.75	1771	3.75	1.7
<b>74UP</b>	<b>74UPK3</b>	<b>74UPK4</b>	<b>74UPS</b>	73.875	1876	4	1.8
<b>86UP</b>	<b>86UPK3</b>	<b>86UPK4</b>	<b>86UPS</b>	85.875	2181	4.5	2.0

## Special Length Posts

Cut posts are available. Consult your Metro representative for more information.



Staked Post



Swaged Post

## Staked Posts (For use with Truck Dollies)

- Each post connects to the truck dolly through the stem receptacle. The stem receptacle is staked into the bottom of the post to ensure a durable connection in abusive mobile applications. Each includes a leveling/connecting bolt.

Cat. No. Chrome	Cat. No. Stainless Steel	Actual Height		Approx. Pkd. Wt.	
		(in.)	(mm)	(lbs.)	(kg)
<b>54P-STKD</b>	<b>54PS-STKD</b>	54.4375	1382	3	1.4
<b>63P-STKD</b>	<b>63PS-STKD</b>	62.4375	1585	3.5	1.6
<b>74P-STKD</b>	<b>74PS-STKD</b>	74.5	1892	4	1.8

## Swaged Posts (For use with Stem Casters in Cart Wash Applications)

- Each post has an aluminum cap swaged into the top of the post.

Cat. No. Stainless Steel	Actual Height		Approx. Pkd. Wt.	
	(in.)	(mm)	(lbs.)	(kg)
<b>33UPS-SW</b>	33.75	857	2	.9
<b>54UPS-SW</b>	53.8125	1366	3	1.4
<b>63UPS-SW</b>	61.8125	1570	3.5	1.6

Job \_\_\_\_\_



We put space to work.

## Super Erecta Shelf® Wire Shelving

### Super Wide Shelving

- **High-density Storage:** Super Wide shelves have a greater storage area for holding large quantities of supplies, especially large, bulky objects, providing maximum storage in minimum space.

- **Load Capacity (evenly distributed) per shelf:**

Depths: 30" and 36" (760 and 914mm)

800 lbs. (363kg) for lengths 48" (1219mm) or shorter.

600 lbs. (272kg) for lengths 54" (1370mm) or longer.

Cat. No. Chrome	Cat. No. Metroseal Green (K3) with Microban	Cat. No.. Metroseal Gray (K4) with Microban	Cat. No. Stainless Steel	Nominal Width/Length		Approx. Pkd. Wt.	
				(in.)	(mm)	(lbs.)	(kg)
<b>3036NC</b>	<b>3036NK3</b>	<b>3036NK4</b>	<b>3036NS</b>	30x36	760x914	14.2	6.4
<b>3048NC</b>	<b>3048NK3</b>	<b>3048NK4</b>	<b>3048NS</b>	30x48	760x1219	17.7	8.0
<b>3060NC</b>	<b>3060NK3</b>	<b>3060NK4</b>	<b>3060NS</b>	30x60	760x1524	20.2	9.2
<b>3072NC</b>	<b>3072NK3</b>	<b>3072NK4</b>	<b>3072NS</b>	30x72	760x1829	22.7	10.3
<b>3636NC</b>	<b>3636NK3</b>	-	<b>3636NS</b>	36x36	910x914	16.7	7.6
<b>3648NC</b>	<b>3648NK3</b>	-	<b>3648NS</b>	36x48	910x1219	21.6	9.8
<b>3660NC</b>	<b>3660NK3</b>	-	<b>3660NS</b>	36x60	910x1524	26.4	12.0
<b>3672NC</b>	<b>3672NK3</b>	-	<b>3672NS</b>	36x72	910x1829	31.6	14.3

**Note:** The actual length of the shelves is 1/8" (3.2mm) shorter than the nominal dimension shown. The actual depth of the shelves is 1/8" (3.2mm) greater than the nominal dimension shown.



### Foot Plates

- Use to bolt units to the floor, or when a broader, more stable foot is desired. Foot plates also help to protect floors by distributing the point load of the shelving unit across a larger contact point.
- Foot plates (completely tightened) add .125" (3mm) to the specified heights of each stationary post on the table.

Zinc Cat. No. **9993Z**

Stainless Steel Cat. No. **9993S**



### "S" Hook

- Used to add on shelving units with only two posts required. Order two per shelf level.

Cat. No. **9995Z**



an Ali Group Company



The Spirit of Excellence



We put space to work.

Item # \_\_\_\_\_

Job \_\_\_\_\_

## Super Erecta® Shelf Wire Shelving



- **Unique Design:** The open wire design of these shelves minimizes dust accumulation and allows free circulation of air, greater visibility of stored items and greater light penetration.
- **Durable Construction:** Super Erecta shelves and posts are constructed of heavy-gauge carbon steel or Type 304 stainless steel.
- **Choice of Finishes:** Super Erecta Brite™ and chrome-plated for dry storage; Metroseal™ Epoxy (green or gray), and Type 304 stainless steel for corrosive environments; and attractive epoxy color options for merchandising applications.
- **Metroseal:** Proprietary rust-resistant finish is a durable epoxy coating over a protective zinc substrate. Metroseal contains Microban® antimicrobial product protection which continuously fights the growth of bacteria, mold, and mildew that cause stains and odors. 12-year limited warranty against rust and corrosion.
- **Versatile:** Super Erecta® Shelf wire shelving can adapt to your changing needs. By using various accessories, hundreds of shelving configurations become possible.
- **Fast, Secure Assembly:** SiteSelect® Posts have a double groove visual guide feature every 8" (203mm), circular grooves at 1" (25mm) increments, and are numbered at 2" (50mm) intervals. A patented, tapered split sleeve snaps together around each post. Tapered openings in the shelf corners slide over the tapered split sleeves providing a positive lock. Shelf is assembled in minutes without the use of any special tools.
- **Adjustability:** Shelves can be adjusted at 1" (25mm) intervals along the entire length of the post.
- **Shelf Ribs:** Run front to back, allowing you to slide items on and off shelves smoothly.
- **Shelf Accessibility:** Shelves can be loaded/unloaded easily from all sides. This open construction allows maximum use of storage cube.
- **Adjustable Feet:** Bolt levelers compensate for surface irregularities.

**Note:** Stainless stationary posts are equipped with stainless steel leveling feet.



Super Erecta Chrome Wire



Super Erecta with Metroseal



Gray Metroseal Epoxy  
Finish with Microban



Green Metroseal Epoxy  
Finish with Microban



**InterMetro Industries Corporation**  
North Washington Street, Wilkes-Barre, PA 18705  
Product Information. U.S. and Canada: 1.800.992.1776  
Outside U.S. and Canada: www.metro.com/contactus

L02-006e  
Printed in U.S.A. 6/20

Information and specifications are subject to change without notice. Please confirm at time of order.

Copyright © 2020 InterMetro Industries Corp.



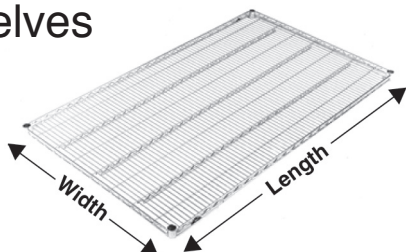
Super Erecta® Shelf Wire Shelving

10.01



# Super Erecta® Shelf Wire Shelving

## Wire Shelves



Aluminum Split Sleeve

- See spec sheet 10.14 for epoxy color options.
- Plastic split sleeves are included with each shelf  
Replacements are available: Cat. No. **9985** (bag of 4)
- Aluminum split sleeves are recommended for abusive mobile applications. Sleeves with stainless C-rings must be used for cart wash applications (exceeding 200°F/93°C) and for all autoclave applications.  
Cat. No. **9986Z** (bag of 4 with zinc C-rings)  
Cat. No. **9986S** (bag of 4 with stainless steel C-rings)
- Weight capacity (evenly distributed) per shelf  
800 lbs. (363kg) for lengths of 18" to 48" (457 to 1219mm)  
600 lbs. (272kg) for lengths of 54" (1370mm) or longer
- Weight capacity (evenly distributed) per unit.  
Stationary shelving units have a maximum load capacity (evenly distributed) of 2,000 lbs. (907kg). Mobile units have a maximum capacity of three times the caster load rating up to but not exceeding 1,000 lbs. (453kg) total. Consult the Metro catalog for caster load ratings.

Cat. No. Super Erecta Brite	Cat. No. Chrome	Cat. No. Metroseal Green (K3) with Microban	Cat. No. Metroseal Gray (K4) with Microban	Cat. No. Stainless	Nominal Width/Length		Approx. Pkd. Wt.	
					(in.)	(mm)	(lbs.)	(kg)
1424BR	1424NC	1424NK3	1424NK4	1424NS	14x24	355x610	5.3	2.4
1430BR	1430NC	1430NK3	1430NK4	1430NS	14x30	355x760	6.3	2.8
1436BR	1436NC	1436NK3	1436NK4	1436NS	14x36	355x914	7.5	3.4
1442BR	1442NC	1442NK3	1442NK4	1442NS	14x42	355x1066	8.3	3.8
1448BR	1448NC	1448NK3	1448NK4	1448NS	14x48	355x1219	9.4	4.3
1460BR	1460NC	1460NK3	1460NK4	1460NS	14x60	355x1524	11.8	5.4
1472BR	1472NC	1472NK3	1472NK4	1472NS	14x72	355x1829	14.4	6.5
-	1818NC	1818NK3	1818NK4	-	18x18	457x457	5.3	2.4
1824BR	1824NC	1824NK3	1824NK4	1824NS	18x24	457x610	6.1	2.7
1830BR	1830NC	1830NK3	1830NK4	1830NS	18x30	457x760	7.1	3.2
1836BR	1836NC	1836NK3	1836NK4	1836NS	18x36	457x914	8.2	3.7
1842BR	1842NC	1842NK3	1842NK4	1842NS	18x42	457x1066	9.3	4.2
1848BR	1848NC	1848NK3	1848NK4	1848NS	18x48	457x1219	10.7	4.9
1854BR	1854NC	1854NK3	1854NK4	1854NS	18x54	457x1370	11.9	5.4
1860BR	1860NC	1860NK3	1860NK4	1860NS	18x60	457x1524	13.4	6.1
1872BR	1872NC	1872NK3	1872NK4	1872NS	18x72	457x1829	14.6	6.6
2124BR	2124NC	2124NK3	2124NK4	2124NS	21x24	530x610	10.1	4.6
2130BR	2130NC	2130NK3	2130NK4	2130NS	21x30	530x760	10.5	4.8
2136BR	2136NC	2136NK3	2136NK4	2136NS	21x36	530x914	10.7	4.9
2142BR	2142NC	2142NK3	2142NK4	2142NS	21x42	530x1066	11.5	5.2
2148BR	2148NC	2148NK3	2148NK4	2148NS	21x48	530x1219	11.9	5.4
2154BR	2154NC	2154NK3	2154NK4	2154NS	21x54	530x1370	12.9	5.8
2160BR	2160NC	2160NK3	2160NK4	2160NS	21x60	530x1524	13.4	6.1
2172BR	2172NC	2172NK3	2172NK4	2172NS	21x72	530x1829	14.4	6.5
2424BR	2424NC	2424NK3	2424NK4	2424NS	24x24	610x610	6.5	3.0
2430BR	2430NC	2430NK3	2430NK4	2430NS	24x30	610x760	8.3	3.8
2436BR	2436NC	2436NK3	2436NK4	2436NS	24x36	610x914	10.1	4.6
2442BR	2442NC	2442NK3	2442NK4	2442NS	24x42	610x1066	11.9	5.4
2448BR	2448NC	2448NK3	2448NK4	2448NS	24x48	610x1219	14.2	6.4
2454BR	2454NC	2454NK3	2454NK4	2454NS	24x54	610x1370	16.1	7.3
2460BR	2460NC	2460NK3	2460NK4	2460NS	24x60	610x1524	18.0	8.2
2472BR	2472NC	2472NK3	2472NK4	2472NS	24x72	610x1829	21.4	9.7

**Note:** The actual length of the shelves is 1/8" (3.2mm) shorter than the nominal dimension shown. The actual depth of the shelves is 1/8" (3.2mm) greater than the nominal dimension shown.

**Note:** The following restrictions apply to shelving units that utilize 14" (355mm) wide shelves:  
Free-standing units: Units taller than 63" (1600mm) must be properly fastened to the floor or wall using Metro foot plates or wall brackets.  
Mobile units: maximum allowable post height is 54" (1370mm).



# Super Erecta® Shelf Wire Shelving

## SiteSelect® Posts

**Stationary Posts** - Equipped with a leveling bolt to account for uneven floors.

- Height includes leveling bolt (completely tightened) and post cap. Leveling bolt can be adjusted 0.5" (13mm).
- Foot plates may be ordered separately and installed in place of leveling foot.
- Replacement leveling bolts: Zinc Cat. No. **RPF04-004**, Stainless Steel Cat. No. **RPF04-004C**
- Replacement post cap for standard posts: Black Cat. No. **RPC06-035**



SiteSelect Posts feature double grooves every 8" (203mm) to aid assembly.

Cat. No. Chrome	Cat. No. Metroseal Green (K3) with Microban	Cat. No.. Metroseal Gray (K4) with Microban	Cat. No. Stainless Steel	Actual Height		Approx. Pkd. Wt.	
				(in.)	(mm)	(lbs.)	(kg)
<b>7P</b>	<b>7PK3</b>	<b>7PK4</b>	-	7.375	187	0.5	0.3
<b>13P</b>	<b>13PK3</b>	<b>13PK4</b>	<b>13PS</b>	14.375	365	1	0.5
<b>27P</b>	<b>27PK3</b>	<b>27PK4</b>	<b>27PS</b>	28.375	720	1.75	0.75
<b>33P</b>	<b>33PK3</b>	<b>33PK4</b>	<b>33PS</b>	34.375	873	2	0.9
<b>54P</b>	<b>54PK3</b>	<b>54PK4</b>	<b>54PS</b>	54.4375	1382	3	1.4
<b>63P</b>	<b>63PK3</b>	<b>63PK4</b>	<b>63PS</b>	62.4375	1585	3.5	1.6
<b>74P</b>	<b>74PK3</b>	<b>74PK4</b>	<b>74PS</b>	74.5	1892	4	1.8
<b>86P</b>	<b>86PK3</b>	<b>86PK4</b>	<b>86PS</b>	86.5	2197	5	2.3
<b>*96P</b>	-	-	-	96.5	2450	5.5	2.5

\*96P should not be used on units less than 24" (610mm) deep. Consult Metro Engineering for alternate recommendations.



Stationary Post



Post for Stem Caster

## Mobile Posts (For use with Stem Casters)

- Height includes post cap.

Cat. No. Chrome	Cat. No. Metroseal Green (K3) with Microban	Cat. No. Metroseal Gray (K4) with Microban	Cat. No. Stainless Steel	Actual Height		Approx. Pkd. Wt.	
				(in.)	(mm)	(lbs.)	(kg)
<b>13UP</b>	<b>13UPK3</b>	<b>13UPK4</b>	<b>13UPS</b>	13.75	349	1	0.5
<b>27UP</b>	<b>27UPK3</b>	<b>27UPK4</b>	<b>27UPS</b>	27.75	704	1.75	0.75
<b>33UP</b>	<b>33UPK3</b>	<b>33UPK4</b>	<b>33UPS</b>	33.75	857	2	0.9
<b>54UP</b>	<b>54UPK3</b>	<b>54UPK4</b>	<b>54UPS</b>	53.8125	1366	3	1.4
<b>63UP</b>	<b>63UPK3</b>	<b>63UPK4</b>	<b>63UPS</b>	61.8125	1570	3.5	1.6
-	<b>70UPK3</b>	<b>70UPK4</b>	-	69.75	1771	3.75	1.7
<b>74UP</b>	<b>74UPK3</b>	<b>74UPK4</b>	<b>74UPS</b>	73.875	1876	4	1.8
<b>86UP</b>	<b>86UPK3</b>	<b>86UPK4</b>	<b>86UPS</b>	85.875	2181	4.5	2.0

## Special Length Posts

Cut posts are available. Consult your Metro representative for more information.

## Staked Posts (For use with Truck Dollies)

- Each post connects to the truck dolly through the stem receptacle. The stem receptacle is staked into the bottom of the post to ensure a durable connection in abusive mobile applications. Each includes a leveling/connecting bolt.

Cat. No. Chrome	Cat. No. Stainless Steel	Actual Height		Approx. Pkd. Wt.	
		(in.)	(mm)	(lbs.)	(kg)
<b>54P-STKD</b>	<b>54PS-STKD</b>	54.4375	1382	3	1.4
<b>63P-STKD</b>	<b>63PS-STKD</b>	62.4375	1585	3.5	1.6
<b>74P-STKD</b>	<b>74PS-STKD</b>	74.5	1892	4	1.8



Staked Post



Swaged Post

## Swaged Posts (For use with Stem Casters in Cart Wash Applications)

- Each post has an aluminum cap swaged into the top of the post.

Cat. No. Stainless Steel	Actual Height		Approx. Pkd. Wt.	
	(in.)	(mm)	(lbs.)	(kg)
<b>33UPS-SW</b>	33.75	857	2	.9
<b>54UPS-SW</b>	53.8125	1366	3	1.4
<b>63UPS-SW</b>	61.8125	1570	3.5	1.6

Job \_\_\_\_\_



We put space to work.

## Super Erecta Shelf® Wire Shelving

### Super Wide Shelving

- **High-density Storage:** Super Wide shelves have a greater storage area for holding large quantities of supplies, especially large, bulky objects, providing maximum storage in minimum space.

- **Load Capacity (evenly distributed) per shelf:**

Depths: 30" and 36" (760 and 914mm)

800 lbs. (363kg) for lengths 48" (1219mm) or shorter.

600 lbs. (272kg) for lengths 54" (1370mm) or longer.

Cat. No. Chrome	Cat. No. Metroseal Green (K3) with Microban	Cat. No.. Metroseal Gray (K4) with Microban	Cat. No. Stainless Steel	Nominal Width/Length		Approx. Pkd. Wt.	
				(in.)	(mm)	(lbs.)	(kg)
<b>3036NC</b>	<b>3036NK3</b>	<b>3036NK4</b>	<b>3036NS</b>	30x36	760x914	14.2	6.4
<b>3048NC</b>	<b>3048NK3</b>	<b>3048NK4</b>	<b>3048NS</b>	30x48	760x1219	17.7	8.0
<b>3060NC</b>	<b>3060NK3</b>	<b>3060NK4</b>	<b>3060NS</b>	30x60	760x1524	20.2	9.2
<b>3072NC</b>	<b>3072NK3</b>	<b>3072NK4</b>	<b>3072NS</b>	30x72	760x1829	22.7	10.3
<b>3636NC</b>	<b>3636NK3</b>	-	<b>3636NS</b>	36x36	910x914	16.7	7.6
<b>3648NC</b>	<b>3648NK3</b>	-	<b>3648NS</b>	36x48	910x1219	21.6	9.8
<b>3660NC</b>	<b>3660NK3</b>	-	<b>3660NS</b>	36x60	910x1524	26.4	12.0
<b>3672NC</b>	<b>3672NK3</b>	-	<b>3672NS</b>	36x72	910x1829	31.6	14.3

**Note:** The actual length of the shelves is 1/8" (3.2mm) shorter than the nominal dimension shown. The actual depth of the shelves is 1/8" (3.2mm) greater than the nominal dimension shown.



### Foot Plates

- Use to bolt units to the floor, or when a broader, more stable foot is desired. Foot plates also help to protect floors by distributing the point load of the shelving unit across a larger contact point.
- Foot plates (completely tightened) add .125" (3mm) to the specified heights of each stationary post on the table.

Zinc Cat. No. **9993Z**

Stainless Steel Cat. No. **9993S**



### "S" Hook

- Used to add on shelving units with only two posts required. Order two per shelf level.

Cat. No. **9995Z**



an Ali Group Company



The Spirit of Excellence



We put space to work.

Item # \_\_\_\_\_

Job \_\_\_\_\_

## Super Erecta® Shelf Wire Shelving



- **Unique Design:** The open wire design of these shelves minimizes dust accumulation and allows free circulation of air, greater visibility of stored items and greater light penetration.
- **Durable Construction:** Super Erecta shelves and posts are constructed of heavy-gauge carbon steel or Type 304 stainless steel.
- **Choice of Finishes:** Super Erecta Brite™ and chrome-plated for dry storage; Metroseal™ Epoxy (green or gray), and Type 304 stainless steel for corrosive environments; and attractive epoxy color options for merchandising applications.
- **Metroseal:** Proprietary rust-resistant finish is a durable epoxy coating over a protective zinc substrate. Metroseal contains Microban® antimicrobial product protection which continuously fights the growth of bacteria, mold, and mildew that cause stains and odors. 12-year limited warranty against rust and corrosion.
- **Versatile:** Super Erecta® Shelf wire shelving can adapt to your changing needs. By using various accessories, hundreds of shelving configurations become possible.
- **Fast, Secure Assembly:** SiteSelect® Posts have a double groove visual guide feature every 8" (203mm), circular grooves at 1" (25mm) increments, and are numbered at 2" (50mm) intervals. A patented, tapered split sleeve snaps together around each post. Tapered openings in the shelf corners slide over the tapered split sleeves providing a positive lock. Shelf is assembled in minutes without the use of any special tools.
- **Adjustability:** Shelves can be adjusted at 1" (25mm) intervals along the entire length of the post.
- **Shelf Ribs:** Run front to back, allowing you to slide items on and off shelves smoothly.
- **Shelf Accessibility:** Shelves can be loaded/unloaded easily from all sides. This open construction allows maximum use of storage cube.
- **Adjustable Feet:** Bolt levelers compensate for surface irregularities.

**Note:** Stainless stationary posts are equipped with stainless steel leveling feet.



Super Erecta Chrome Wire



Super Erecta with Metroseal



Gray Metroseal Epoxy  
Finish with Microban



Green Metroseal Epoxy  
Finish with Microban



**InterMetro Industries Corporation**  
North Washington Street, Wilkes-Barre, PA 18705  
Product Information. U.S. and Canada: 1.800.992.1776  
Outside U.S. and Canada: [www.metro.com/contactus](http://www.metro.com/contactus)

L02-006e  
Printed in U.S.A. 6/20

Information and specifications are subject to change without notice. Please confirm at time of order.

Copyright © 2020 InterMetro Industries Corp.



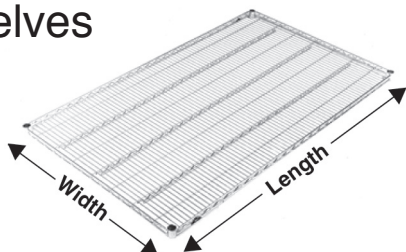
Super Erecta® Shelf Wire Shelving

10.01



# Super Erecta® Shelf Wire Shelving

## Wire Shelves



Aluminum Split Sleeve

- See spec sheet 10.14 for epoxy color options.
- Plastic split sleeves are included with each shelf  
Replacements are available: Cat. No. **9985** (bag of 4)
- Aluminum split sleeves are recommended for abusive mobile applications. Sleeves with stainless C-rings must be used for cart wash applications (exceeding 200°F/93°C) and for all autoclave applications.  
Cat. No. **9986Z** (bag of 4 with zinc C-rings)  
Cat. No. **9986S** (bag of 4 with stainless steel C-rings)
- Weight capacity (evenly distributed) per shelf  
800 lbs. (363kg) for lengths of 18" to 48" (457 to 1219mm)  
600 lbs. (272kg) for lengths of 54" (1370mm) or longer
- Weight capacity (evenly distributed) per unit.  
Stationary shelving units have a maximum load capacity (evenly distributed) of 2,000 lbs. (907kg). Mobile units have a maximum capacity of three times the caster load rating up to but not exceeding 1,000 lbs. (453kg) total. Consult the Metro catalog for caster load ratings.

Cat. No. Super Erecta Brite	Cat. No. Chrome	Cat. No. Metroseal Green (K3) with Microban	Cat. No. Metroseal Gray (K4) with Microban	Cat. No. Stainless	Nominal Width/Length		Approx. Pkd. Wt.	
					(in.)	(mm)	(lbs.)	(kg)
1424BR	1424NC	1424NK3	1424NK4	1424NS	14x24	355x610	5.3	2.4
1430BR	1430NC	1430NK3	1430NK4	1430NS	14x30	355x760	6.3	2.8
1436BR	1436NC	1436NK3	1436NK4	1436NS	14x36	355x914	7.5	3.4
1442BR	1442NC	1442NK3	1442NK4	1442NS	14x42	355x1066	8.3	3.8
1448BR	1448NC	1448NK3	1448NK4	1448NS	14x48	355x1219	9.4	4.3
1460BR	1460NC	1460NK3	1460NK4	1460NS	14x60	355x1524	11.8	5.4
1472BR	1472NC	1472NK3	1472NK4	1472NS	14x72	355x1829	14.4	6.5
-	1818NC	1818NK3	1818NK4	-	18x18	457x457	5.3	2.4
1824BR	1824NC	1824NK3	1824NK4	1824NS	18x24	457x610	6.1	2.7
1830BR	1830NC	1830NK3	1830NK4	1830NS	18x30	457x760	7.1	3.2
1836BR	1836NC	1836NK3	1836NK4	1836NS	18x36	457x914	8.2	3.7
1842BR	1842NC	1842NK3	1842NK4	1842NS	18x42	457x1066	9.3	4.2
1848BR	1848NC	1848NK3	1848NK4	1848NS	18x48	457x1219	10.7	4.9
1854BR	1854NC	1854NK3	1854NK4	1854NS	18x54	457x1370	11.9	5.4
1860BR	1860NC	1860NK3	1860NK4	1860NS	18x60	457x1524	13.4	6.1
1872BR	1872NC	1872NK3	1872NK4	1872NS	18x72	457x1829	14.6	6.6
2124BR	2124NC	2124NK3	2124NK4	2124NS	21x24	530x610	10.1	4.6
2130BR	2130NC	2130NK3	2130NK4	2130NS	21x30	530x760	10.5	4.8
2136BR	2136NC	2136NK3	2136NK4	2136NS	21x36	530x914	10.7	4.9
2142BR	2142NC	2142NK3	2142NK4	2142NS	21x42	530x1066	11.5	5.2
2148BR	2148NC	2148NK3	2148NK4	2148NS	21x48	530x1219	11.9	5.4
2154BR	2154NC	2154NK3	2154NK4	2154NS	21x54	530x1370	12.9	5.8
2160BR	2160NC	2160NK3	2160NK4	2160NS	21x60	530x1524	13.4	6.1
2172BR	2172NC	2172NK3	2172NK4	2172NS	21x72	530x1829	14.4	6.5
2424BR	2424NC	2424NK3	2424NK4	2424NS	24x24	610x610	6.5	3.0
2430BR	2430NC	2430NK3	2430NK4	2430NS	24x30	610x760	8.3	3.8
2436BR	2436NC	2436NK3	2436NK4	2436NS	24x36	610x914	10.1	4.6
2442BR	2442NC	2442NK3	2442NK4	2442NS	24x42	610x1066	11.9	5.4
2448BR	2448NC	2448NK3	2448NK4	2448NS	24x48	610x1219	14.2	6.4
2454BR	2454NC	2454NK3	2454NK4	2454NS	24x54	610x1370	16.1	7.3
2460BR	2460NC	2460NK3	2460NK4	2460NS	24x60	610x1524	18.0	8.2
2472BR	2472NC	2472NK3	2472NK4	2472NS	24x72	610x1829	21.4	9.7

**Note:** The actual length of the shelves is 1/8" (3.2mm) shorter than the nominal dimension shown. The actual depth of the shelves is 1/8" (3.2mm) greater than the nominal dimension shown.

**Note:** The following restrictions apply to shelving units that utilize 14" (355mm) wide shelves:  
Free-standing units: Units taller than 63" (1600mm) must be properly fastened to the floor or wall using Metro foot plates or wall brackets.  
Mobile units: maximum allowable post height is 54" (1370mm).



# Super Erecta® Shelf Wire Shelving

## SiteSelect® Posts

**Stationary Posts** - Equipped with a leveling bolt to account for uneven floors.

- Height includes leveling bolt (completely tightened) and post cap. Leveling bolt can be adjusted 0.5" (13mm).
- Foot plates may be ordered separately and installed in place of leveling foot.
- Replacement leveling bolts: Zinc Cat. No. **RPF04-004**, Stainless Steel Cat. No. **RPF04-004C**
- Replacement post cap for standard posts: Black Cat. No. **RPC06-035**



SiteSelect Posts feature double grooves every 8" (203mm) to aid assembly.

Cat. No. Chrome	Cat. No. Metroseal Green (K3) with Microban	Cat. No.. Metroseal Gray (K4) with Microban	Cat. No. Stainless Steel	Actual Height		Approx. Pkd. Wt.	
				(in.)	(mm)	(lbs.)	(kg)
<b>7P</b>	<b>7PK3</b>	<b>7PK4</b>	-	7.375	187	0.5	0.3
<b>13P</b>	<b>13PK3</b>	<b>13PK4</b>	<b>13PS</b>	14.375	365	1	0.5
<b>27P</b>	<b>27PK3</b>	<b>27PK4</b>	<b>27PS</b>	28.375	720	1.75	0.75
<b>33P</b>	<b>33PK3</b>	<b>33PK4</b>	<b>33PS</b>	34.375	873	2	0.9
<b>54P</b>	<b>54PK3</b>	<b>54PK4</b>	<b>54PS</b>	54.4375	1382	3	1.4
<b>63P</b>	<b>63PK3</b>	<b>63PK4</b>	<b>63PS</b>	62.4375	1585	3.5	1.6
<b>74P</b>	<b>74PK3</b>	<b>74PK4</b>	<b>74PS</b>	74.5	1892	4	1.8
<b>86P</b>	<b>86PK3</b>	<b>86PK4</b>	<b>86PS</b>	86.5	2197	5	2.3
<b>*96P</b>	-	-	-	96.5	2450	5.5	2.5

\*96P should not be used on units less than 24" (610mm) deep. Consult Metro Engineering for alternate recommendations.



Stationary Post



Post for Stem Caster

## Mobile Posts (For use with Stem Casters)

- Height includes post cap.

Cat. No. Chrome	Cat. No. Metroseal Green (K3) with Microban	Cat. No. Metroseal Gray (K4) with Microban	Cat. No. Stainless Steel	Actual Height		Approx. Pkd. Wt.	
				(in.)	(mm)	(lbs.)	(kg)
<b>13UP</b>	<b>13UPK3</b>	<b>13UPK4</b>	<b>13UPS</b>	13.75	349	1	0.5
<b>27UP</b>	<b>27UPK3</b>	<b>27UPK4</b>	<b>27UPS</b>	27.75	704	1.75	0.75
<b>33UP</b>	<b>33UPK3</b>	<b>33UPK4</b>	<b>33UPS</b>	33.75	857	2	0.9
<b>54UP</b>	<b>54UPK3</b>	<b>54UPK4</b>	<b>54UPS</b>	53.8125	1366	3	1.4
<b>63UP</b>	<b>63UPK3</b>	<b>63UPK4</b>	<b>63UPS</b>	61.8125	1570	3.5	1.6
-	<b>70UPK3</b>	<b>70UPK4</b>	-	69.75	1771	3.75	1.7
<b>74UP</b>	<b>74UPK3</b>	<b>74UPK4</b>	<b>74UPS</b>	73.875	1876	4	1.8
<b>86UP</b>	<b>86UPK3</b>	<b>86UPK4</b>	<b>86UPS</b>	85.875	2181	4.5	2.0

## Special Length Posts

Cut posts are available. Consult your Metro representative for more information.



Staked Post



Swaged Post

## Staked Posts (For use with Truck Dollies)

- Each post connects to the truck dolly through the stem receptacle. The stem receptacle is staked into the bottom of the post to ensure a durable connection in abusive mobile applications. Each includes a leveling/connecting bolt.

Cat. No. Chrome	Cat. No. Stainless Steel	Actual Height		Approx. Pkd. Wt.	
		(in.)	(mm)	(lbs.)	(kg)
<b>54P-STKD</b>	<b>54PS-STKD</b>	54.4375	1382	3	1.4
<b>63P-STKD</b>	<b>63PS-STKD</b>	62.4375	1585	3.5	1.6
<b>74P-STKD</b>	<b>74PS-STKD</b>	74.5	1892	4	1.8

## Swaged Posts (For use with Stem Casters in Cart Wash Applications)

- Each post has an aluminum cap swaged into the top of the post.

Cat. No. Stainless Steel	Actual Height		Approx. Pkd. Wt.	
	(in.)	(mm)	(lbs.)	(kg)
<b>33UPS-SW</b>	33.75	857	2	.9
<b>54UPS-SW</b>	53.8125	1366	3	1.4
<b>63UPS-SW</b>	61.8125	1570	3.5	1.6

Job \_\_\_\_\_



We put space to work.

## Super Erecta Shelf® Wire Shelving

### Super Wide Shelving

- **High-density Storage:** Super Wide shelves have a greater storage area for holding large quantities of supplies, especially large, bulky objects, providing maximum storage in minimum space.

- **Load Capacity (evenly distributed) per shelf:**

Depths: 30" and 36" (760 and 914mm)

800 lbs. (363kg) for lengths 48" (1219mm) or shorter.

600 lbs. (272kg) for lengths 54" (1370mm) or longer.

Cat. No. Chrome	Cat. No. Metroseal Green (K3) with Microban	Cat. No.. Metroseal Gray (K4) with Microban	Cat. No. Stainless Steel	Nominal Width/Length		Approx. Pkd. Wt.	
				(in.)	(mm)	(lbs.)	(kg)
<b>3036NC</b>	<b>3036NK3</b>	<b>3036NK4</b>	<b>3036NS</b>	30x36	760x914	14.2	6.4
<b>3048NC</b>	<b>3048NK3</b>	<b>3048NK4</b>	<b>3048NS</b>	30x48	760x1219	17.7	8.0
<b>3060NC</b>	<b>3060NK3</b>	<b>3060NK4</b>	<b>3060NS</b>	30x60	760x1524	20.2	9.2
<b>3072NC</b>	<b>3072NK3</b>	<b>3072NK4</b>	<b>3072NS</b>	30x72	760x1829	22.7	10.3
<b>3636NC</b>	<b>3636NK3</b>	-	<b>3636NS</b>	36x36	910x914	16.7	7.6
<b>3648NC</b>	<b>3648NK3</b>	-	<b>3648NS</b>	36x48	910x1219	21.6	9.8
<b>3660NC</b>	<b>3660NK3</b>	-	<b>3660NS</b>	36x60	910x1524	26.4	12.0
<b>3672NC</b>	<b>3672NK3</b>	-	<b>3672NS</b>	36x72	910x1829	31.6	14.3

**Note:** The actual length of the shelves is 1/8" (3.2mm) shorter than the nominal dimension shown. The actual depth of the shelves is 1/8" (3.2mm) greater than the nominal dimension shown.



### Foot Plates

- Use to bolt units to the floor, or when a broader, more stable foot is desired. Foot plates also help to protect floors by distributing the point load of the shelving unit across a larger contact point.
- Foot plates (completely tightened) add .125" (3mm) to the specified heights of each stationary post on the table.

Zinc Cat. No. **9993Z**

Stainless Steel Cat. No. **9993S**



### "S" Hook

- Used to add on shelving units with only two posts required. Order two per shelf level.

Cat. No. **9995Z**



an Ali Group Company



The Spirit of Excellence



Item # \_\_\_\_\_

Job \_\_\_\_\_



**Wire Shelving Accessories**

**WIRE SHELVING ACCESSORIES**

**Decorator Shelf Inlays**

Hardboard mats prevent small items from falling through wire shelves. Fit between posts and level with top of shelf edge. Single packed.

Material — 1/8" (3.2mm) thick cardboard with textured vinyl laminate on each side.

Cleaning instructions — May be wiped with damp cloth. Cannot be immersed in liquid.

Model No.	Width/Length		Description
	(in.)	(mm)	
1436BWI	14x36	355x914	Reversible, Black and White
1448BWI	14x48	355x1219	Reversible, Black and White
1824BWI	18x24	457x610	Reversible, Black and White
1836BWI	18x36	457x914	Reversible, Black and White
1848BWI	18x48	457x1219	Reversible, Black and White
2424BWI	24x24	610x610	Reversible, Black and White
2436BWI	24x36	610x914	Reversible, Black and White
2448BWI	24x48	610x1219	Reversible, Black and White



*Decorator Shelf Inlays*

**Note:** Inlays interfere with the attachment of ledges and dividers. The user may modify the inlay to accommodate these accessories.

**Clear Shelf Inlays**

Nearly invisible solid plastic mat retains the open-wire look of shelves and allows light penetration. Sold in packages of 4.

Material — 0.02" (0.5mm) thick PETG

Model No.	Width/Length	
	(in.)	(mm)
1436CI-4	14x36	355x914
1448CI-4	14x48	355x1219
1460CI-4	14x60	355x1524
1836CI-4	18x36	457x914
1848CI-4	18x48	457x1219
1860CI-4	18x60	457x1524
2136CI-4	21x36	530x914
2148CI-4	21x48	530x1219
2160CI-4	21x60	530x1524
2436CI-4	24x36	610x914
2448CI-4	24x48	610x1219
2460CI-4	24x60	610x1524



*Clear Shelf Inlays*

**Triangle Shelves**

Put unused corner space to work while keeping traffic aisles clear.

- Shelf sizes correspond to width (depth) of Super Erecta Shelving for add-on capability.
- Shelves attach to standard Super Erecta or qwikSLOT posts.
- Weight capacity — 100 lb. (45.4kg)

Model No. Chrome	Model No. Black	Size Width		Approx. Pkd. Wt.	
		(in.)	(mm)	(lbs.)	(kg)
H18TRC	H18TRB	18	457	15 1/2	7
H24TRC	H24TRB	24	610	21 1/2	10



*Triangle Shelf*

Not intended for mobile applications.  
Maximum allowable usage height for free-standing unit is 54" (1370mm).



**InterMetro Industries Corporation**  
North Washington Street  
Wilkes-Barre, PA 18705  
www.metro.com



**10.06**



# WIRE SHELVING ACCESSORIES

## Aluminum Split Sleeves

Improved design is easier to install. For high temperature, over the road, or conductive applications. Zinc or stainless steel retainer rings available to secure shelf. One bag required per shelf; 4 pairs per bag.

Model No.	Description
9986Z	Aluminum Split Sleeves with Zinc Rings
9986S	Aluminum Split Sleeves with Stainless Rings

**Note:** Cannot be used with Super Adjustable shelves.



## High Temperature Usage

Aluminum split sleeves — high temperature usage (Stationary Unit)

- A chrome plated Super Erecta wire shelving unit can be used to a maximum of 250°F (121°C).
- A stainless steel Super Erecta wire shelving unit can be used to 500°F (260°C).

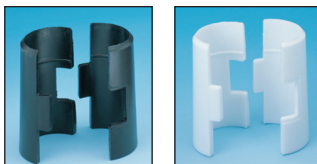
For mobile units, please factor the usage requirements of the caster.

## Replacement Plastic Split Sleeves for Super Erecta Shelves

One bag required per shelf; 4 pairs per bag.

Black. Model No. **9985**

White. Model No. **9985W**



**Note:** White post caps and white split sleeves are standard with white designer shelving only.

## Replacement Super Adjustable Super Erecta Corner Releases, Wedges, and Sleeves

Replacement parts for Super Adjustable and original Super Adjustable. One bag required per shelf. Each kit includes (4) corner releases, (4) wedges, and (4) sleeves.

Model No. **SAKITA2**



## “S” Hooks

Use to eliminate two posts per adjacent unit. Sold individually. Two are required per shelf. Model No. **9995Z**

**Notes:**

- May only be used in stationary applications.
- Must use a minimum of (2) posts per adjacent add-on unit.
- Weight capacities of adjacent shelving units connected by “S” hooks – standard weight capacities of shelves and stationary units apply. For the most common configurations involving 54" (1370mm) or taller posts and 4-tiers of shelving, weight capacities are as follows: starter unit with (4) posts = 2,000 lbs. (907kg) evenly distributed; add-on unit with (2) posts and (2) “S” hooks per level = 2,000 lbs. (907kg) evenly distributed.
- The distance between two adjacent shelving units — collar to collar — connected by “S” hooks is 1/16" (1.6mm).



## Security Shelf Connector Kit

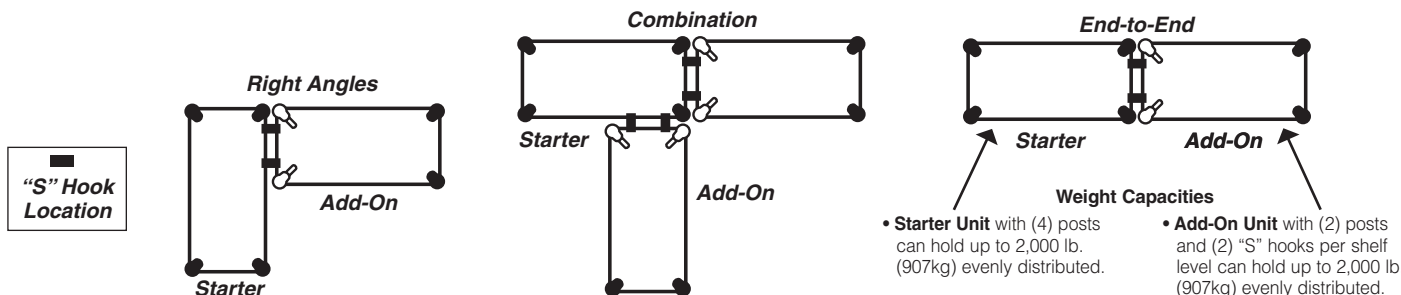
Kit includes (2) “S” hooks, (2) screws, and (2) bolts. Used for added security to “add-on” shelving units. One connector kit required for each connection.

Chrome.

Model No. **H9995C**

Black.

Model No. **H9995B**





# WIRE SHELVING ACCESSORIES

## Post Clamps

Joins units together for maximum strength.  
Zinc-plated. Model No. **9994Z**  
Black. Model No. **9994BL**

**Notes:**

A post clamp adds 5/32" (4mm) between the base of the collars on adjacent units.  
The distance between the snake frames on the adjacent units is 7/32" (6mm).  
Enclosure panels CANNOT be attached on the ends where post clamps join adjacent units.



## Hole Plugs (for Shelves)

This chrome-plated cover is used to fill shelf-corner openings.  
Use whenever posts have been eliminated by "S" hooks.  
Model No. **9997C**



## Foot Plates

Use to bolt units to the floor, or when a broader, more stable foot is desired. Replaces standard post leveling bolt.  
Zinc. Model No. **9993Z**  
Stainless Steel. Model No. **9993S**  
Black. Model No. **9993BL**



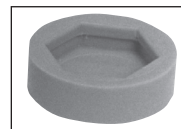
## Wall Clamps

Give single units greater stability.  
Model No. **9984C**



## Glides

Smooth polymer cover fits over leveling bolt to protect floors.  
Material — HDPE  
Model No. **9991P**



## Decorative Leveling Foot

Decorative alternative for post. Compensates for uneven surfaces.  
Chrome. Model No. **HDFC**  
Black. Model No. **HDFB**



## Decorative Casters

- Black nylon housing with non-marking polymer tread.
- 2 1/2" (63mm) models have threaded stem and attach to standard stationary shelving posts. Weight capacity of unit with (4) HDC3BB casters is 300 lb. (136kg).
- 4" (100mm) casters have a non-threaded stem and attach to standard mobile (-UP) posts. Weight capacity of a unit is 675 lb. (306kg)

Model No.	Type	Diameter	
		(in.)	(mm)
HDC3BB	Swivel/Brake	2 1/2	63
HDC5B	Swivel	4	100
HDC5BB	Swivel/Brake	4	100



**HDC5B**

**HDC5BB**

Job \_\_\_\_\_

10.06



### Keyboard Tray

Attaches to all Metro wire shelves, 36" (914mm) length or longer. Mouse Tray adapts to left or right of Keyboard Tray. Flip-top compartment provides convenient storage. Constructed of durable high-impact polystyrene. Assembles easily.

- Hardware included for attachment to Metro wire shelves; template provided for attachment to solid desk surfaces.
- Keyboard Tray Dimensions: 22" L. (559mm) x 15 1/2" W. (394mm).
- Dimension with Mouse Tray fully extended: 29 1/2" L. (749mm) x 15 1/2" W. (394mm).

Model No. **CKS1522BL**



**Keyboard Tray**

### Wire Management Device

Keeps wires and cables neatly organized both horizontally and vertically. Easily snaps over the edge of any Super Erecta wire or qwikSLOT shelf. Black epoxy finish.

Model No.	Width (in.) (mm)	Length (in.) (mm)	Approx. Pkd. Wt. (lbs.) (kg)
CWM	2 51	2 51	.5 .25

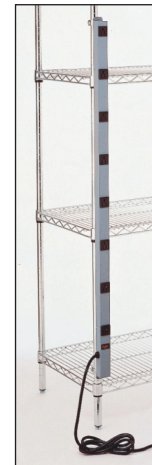


**Wire Management Device**

### Power Strip

- Mounts quickly and easily to either a Super Erecta or qwikSLOT post.
- Includes a 15 foot (4572mm) long cord.
- Mounting brackets and hardware included.
- UL/CSA approved.
- 15 Amp Circuit Breaker.
- Illuminated Power Switch. 15A/125VAC.60Hz/1875 W.
- Gray/blue finish.
- 14/3 SJT Molded Power Supply Cord.

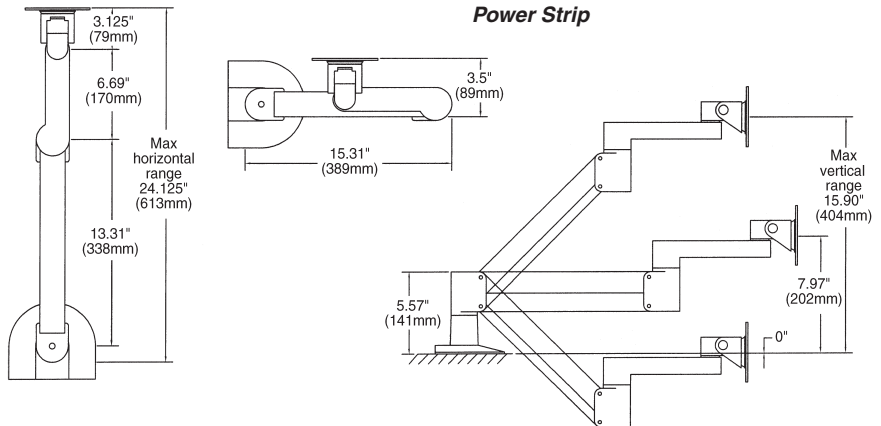
Model No.	Width (in.) (mm)	Length (in.) (mm)	Approx. Pkd. Wt. (lbs.) (kg)
CPS48	1 1/2 38	48 1219	6 2.72



**Power Strip**

### Surface Mount Swing Arm for Flat Monitor

Model No. **LTFMA**



All Metro Catalog Sheets are available on our website: [www.metro.com](http://www.metro.com)



**InterMetro Industries Corporation**  
 North Washington Street, Wilkes-Barre, PA 18705  
 Phone: 570-825-2741  
 Product Information. U.S. and Canada: 1.800.992.1776  
 Outside U.S. and Canada: [www.metro.com/contactus](http://www.metro.com/contactus)

L02-009  
 Printed in U.S.A. Rev. 03/14

Information and specifications are subject to change without notice. Please confirm at time of order

Copyright © 2014 InterMetro Industries Corp.

Wire Shelving Accessories



We put space to work.

Item # \_\_\_\_\_

Job \_\_\_\_\_

## Super Erecta® Shelf Wire Shelving



- **Unique Design:** The open wire design of these shelves minimizes dust accumulation and allows free circulation of air, greater visibility of stored items and greater light penetration.
- **Durable Construction:** Super Erecta shelves and posts are constructed of heavy-gauge carbon steel or Type 304 stainless steel.
- **Choice of Finishes:** Super Erecta Brite™ and chrome-plated for dry storage; Metroseal™ Epoxy (green or gray), and Type 304 stainless steel for corrosive environments; and attractive epoxy color options for merchandising applications.
- **Metroseal:** Proprietary rust-resistant finish is a durable epoxy coating over a protective zinc substrate. Metroseal contains Microban® antimicrobial product protection which continuously fights the growth of bacteria, mold, and mildew that cause stains and odors. 12-year limited warranty against rust and corrosion.
- **Versatile:** Super Erecta® Shelf wire shelving can adapt to your changing needs. By using various accessories, hundreds of shelving configurations become possible.
- **Fast, Secure Assembly:** SiteSelect® Posts have a double groove visual guide feature every 8" (203mm), circular grooves at 1" (25mm) increments, and are numbered at 2" (50mm) intervals. A patented, tapered split sleeve snaps together around each post. Tapered openings in the shelf corners slide over the tapered split sleeves providing a positive lock. Shelf is assembled in minutes without the use of any special tools.
- **Adjustability:** Shelves can be adjusted at 1" (25mm) intervals along the entire length of the post.
- **Shelf Ribs:** Run front to back, allowing you to slide items on and off shelves smoothly.
- **Shelf Accessibility:** Shelves can be loaded/unloaded easily from all sides. This open construction allows maximum use of storage cube.
- **Adjustable Feet:** Bolt levelers compensate for surface irregularities.

**Note:** Stainless stationary posts are equipped with stainless steel leveling feet.



Super Erecta Chrome Wire



Super Erecta with Metroseal



Gray Metroseal Epoxy  
Finish with Microban



Green Metroseal Epoxy  
Finish with Microban



**InterMetro Industries Corporation**  
North Washington Street, Wilkes-Barre, PA 18705  
Product Information. U.S. and Canada: 1.800.992.1776  
Outside U.S. and Canada: [www.metro.com/contactus](http://www.metro.com/contactus)

L02-006e  
Printed in U.S.A. 6/20

Information and specifications are subject to change without notice. Please confirm at time of order.

Copyright © 2020 InterMetro Industries Corp.



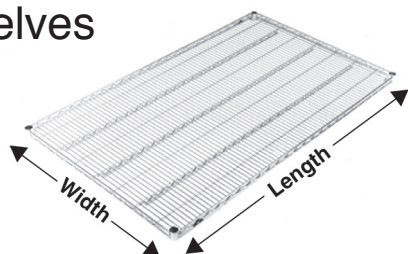
Super Erecta® Shelf Wire Shelving

10.01



# Super Erecta® Shelf Wire Shelving

## Wire Shelves



Aluminum Split Sleeve

- See spec sheet 10.14 for epoxy color options.
- Plastic split sleeves are included with each shelf  
Replacements are available: Cat. No. **9985** (bag of 4)
- Aluminum split sleeves are recommended for abusive mobile applications. Sleeves with stainless C-rings must be used for cart wash applications (exceeding 200°F/93°C) and for all autoclave applications.  
Cat. No. **9986Z** (bag of 4 with zinc C-rings)  
Cat. No. **9986S** (bag of 4 with stainless steel C-rings)
- Weight capacity (evenly distributed) per shelf  
800 lbs. (363kg) for lengths of 18" to 48" (457 to 1219mm)  
600 lbs. (272kg) for lengths of 54" (1370mm) or longer
- Weight capacity (evenly distributed) per unit.  
Stationary shelving units have a maximum load capacity (evenly distributed) of 2,000 lbs. (907kg). Mobile units have a maximum capacity of three times the caster load rating up to but not exceeding 1,000 lbs. (453kg) total. Consult the Metro catalog for caster load ratings.

Cat. No. Super Erecta Brite	Cat. No. Chrome	Cat. No. Metroseal Green (K3) with Microban	Cat. No. Metroseal Gray (K4) with Microban	Cat. No. Stainless	Nominal Width/Length		Approx. Pkd. Wt.	
					(in.)	(mm)	(lbs.)	(kg)
1424BR	1424NC	1424NK3	1424NK4	1424NS	14x24	355x610	5.3	2.4
1430BR	1430NC	1430NK3	1430NK4	1430NS	14x30	355x760	6.3	2.8
1436BR	1436NC	1436NK3	1436NK4	1436NS	14x36	355x914	7.5	3.4
1442BR	1442NC	1442NK3	1442NK4	1442NS	14x42	355x1066	8.3	3.8
1448BR	1448NC	1448NK3	1448NK4	1448NS	14x48	355x1219	9.4	4.3
1460BR	1460NC	1460NK3	1460NK4	1460NS	14x60	355x1524	11.8	5.4
1472BR	1472NC	1472NK3	1472NK4	1472NS	14x72	355x1829	14.4	6.5
-	1818NC	1818NK3	1818NK4	-	18x18	457x457	5.3	2.4
1824BR	1824NC	1824NK3	1824NK4	1824NS	18x24	457x610	6.1	2.7
1830BR	1830NC	1830NK3	1830NK4	1830NS	18x30	457x760	7.1	3.2
1836BR	1836NC	1836NK3	1836NK4	1836NS	18x36	457x914	8.2	3.7
1842BR	1842NC	1842NK3	1842NK4	1842NS	18x42	457x1066	9.3	4.2
1848BR	1848NC	1848NK3	1848NK4	1848NS	18x48	457x1219	10.7	4.9
1854BR	1854NC	1854NK3	1854NK4	1854NS	18x54	457x1370	11.9	5.4
1860BR	1860NC	1860NK3	1860NK4	1860NS	18x60	457x1524	13.4	6.1
1872BR	1872NC	1872NK3	1872NK4	1872NS	18x72	457x1829	14.6	6.6
2124BR	2124NC	2124NK3	2124NK4	2124NS	21x24	530x610	10.1	4.6
2130BR	2130NC	2130NK3	2130NK4	2130NS	21x30	530x760	10.5	4.8
2136BR	2136NC	2136NK3	2136NK4	2136NS	21x36	530x914	10.7	4.9
2142BR	2142NC	2142NK3	2142NK4	2142NS	21x42	530x1066	11.5	5.2
2148BR	2148NC	2148NK3	2148NK4	2148NS	21x48	530x1219	11.9	5.4
2154BR	2154NC	2154NK3	2154NK4	2154NS	21x54	530x1370	12.9	5.8
2160BR	2160NC	2160NK3	2160NK4	2160NS	21x60	530x1524	13.4	6.1
2172BR	2172NC	2172NK3	2172NK4	2172NS	21x72	530x1829	14.4	6.5
2424BR	2424NC	2424NK3	2424NK4	2424NS	24x24	610x610	6.5	3.0
2430BR	2430NC	2430NK3	2430NK4	2430NS	24x30	610x760	8.3	3.8
2436BR	2436NC	2436NK3	2436NK4	2436NS	24x36	610x914	10.1	4.6
2442BR	2442NC	2442NK3	2442NK4	2442NS	24x42	610x1066	11.9	5.4
2448BR	2448NC	2448NK3	2448NK4	2448NS	24x48	610x1219	14.2	6.4
2454BR	2454NC	2454NK3	2454NK4	2454NS	24x54	610x1370	16.1	7.3
2460BR	2460NC	2460NK3	2460NK4	2460NS	24x60	610x1524	18.0	8.2
2472BR	2472NC	2472NK3	2472NK4	2472NS	24x72	610x1829	21.4	9.7

**Note:** The actual length of the shelves is 1/8" (3.2mm) shorter than the nominal dimension shown. The actual depth of the shelves is 1/8" (3.2mm) greater than the nominal dimension shown.

**Note:** The following restrictions apply to shelving units that utilize 14" (355mm) wide shelves:  
Free-standing units: Units taller than 63" (1600mm) must be properly fastened to the floor or wall using Metro foot plates or wall brackets.  
Mobile units: maximum allowable post height is 54" (1370mm).



# Super Erecta® Shelf Wire Shelving

## SiteSelect® Posts

**Stationary Posts** - Equipped with a leveling bolt to account for uneven floors.

- Height includes leveling bolt (completely tightened) and post cap. Leveling bolt can be adjusted 0.5" (13mm).
- Foot plates may be ordered separately and installed in place of leveling foot.
- Replacement leveling bolts: Zinc Cat. No. **RPF04-004**, Stainless Steel Cat. No. **RPF04-004C**
- Replacement post cap for standard posts: Black Cat. No. **RPC06-035**



SiteSelect Posts feature double grooves every 8" (203mm) to aid assembly.

Cat. No. Chrome	Cat. No. Metroseal Green (K3) with Microban	Cat. No.. Metroseal Gray (K4) with Microban	Cat. No. Stainless Steel	Actual Height		Approx. Pkd. Wt.	
				(in.)	(mm)	(lbs.)	(kg)
<b>7P</b>	<b>7PK3</b>	<b>7PK4</b>	-	7.375	187	0.5	0.3
<b>13P</b>	<b>13PK3</b>	<b>13PK4</b>	<b>13PS</b>	14.375	365	1	0.5
<b>27P</b>	<b>27PK3</b>	<b>27PK4</b>	<b>27PS</b>	28.375	720	1.75	0.75
<b>33P</b>	<b>33PK3</b>	<b>33PK4</b>	<b>33PS</b>	34.375	873	2	0.9
<b>54P</b>	<b>54PK3</b>	<b>54PK4</b>	<b>54PS</b>	54.4375	1382	3	1.4
<b>63P</b>	<b>63PK3</b>	<b>63PK4</b>	<b>63PS</b>	62.4375	1585	3.5	1.6
<b>74P</b>	<b>74PK3</b>	<b>74PK4</b>	<b>74PS</b>	74.5	1892	4	1.8
<b>86P</b>	<b>86PK3</b>	<b>86PK4</b>	<b>86PS</b>	86.5	2197	5	2.3
<b>*96P</b>	-	-	-	96.5	2450	5.5	2.5

\*96P should not be used on units less than 24" (610mm) deep. Consult Metro Engineering for alternate recommendations.



Stationary Post



Post for Stem Caster

## Mobile Posts (For use with Stem Casters)

- Height includes post cap.

Cat. No. Chrome	Cat. No. Metroseal Green (K3) with Microban	Cat. No. Metroseal Gray (K4) with Microban	Cat. No. Stainless Steel	Actual Height		Approx. Pkd. Wt.	
				(in.)	(mm)	(lbs.)	(kg)
<b>13UP</b>	<b>13UPK3</b>	<b>13UPK4</b>	<b>13UPS</b>	13.75	349	1	0.5
<b>27UP</b>	<b>27UPK3</b>	<b>27UPK4</b>	<b>27UPS</b>	27.75	704	1.75	0.75
<b>33UP</b>	<b>33UPK3</b>	<b>33UPK4</b>	<b>33UPS</b>	33.75	857	2	0.9
<b>54UP</b>	<b>54UPK3</b>	<b>54UPK4</b>	<b>54UPS</b>	53.8125	1366	3	1.4
<b>63UP</b>	<b>63UPK3</b>	<b>63UPK4</b>	<b>63UPS</b>	61.8125	1570	3.5	1.6
-	<b>70UPK3</b>	<b>70UPK4</b>	-	69.75	1771	3.75	1.7
<b>74UP</b>	<b>74UPK3</b>	<b>74UPK4</b>	<b>74UPS</b>	73.875	1876	4	1.8
<b>86UP</b>	<b>86UPK3</b>	<b>86UPK4</b>	<b>86UPS</b>	85.875	2181	4.5	2.0

## Special Length Posts

Cut posts are available. Consult your Metro representative for more information.

## Staked Posts (For use with Truck Dollies)

- Each post connects to the truck dolly through the stem receptacle. The stem receptacle is staked into the bottom of the post to ensure a durable connection in abusive mobile applications. Each includes a leveling/connecting bolt.

Cat. No. Chrome	Cat. No. Stainless Steel	Actual Height		Approx. Pkd. Wt.	
		(in.)	(mm)	(lbs.)	(kg)
<b>54P-STKD</b>	<b>54PS-STKD</b>	54.4375	1382	3	1.4
<b>63P-STKD</b>	<b>63PS-STKD</b>	62.4375	1585	3.5	1.6
<b>74P-STKD</b>	<b>74PS-STKD</b>	74.5	1892	4	1.8



Staked Post



Swaged Post

## Swaged Posts (For use with Stem Casters in Cart Wash Applications)

- Each post has an aluminum cap swaged into the top of the post.

Cat. No. Stainless Steel	Actual Height		Approx. Pkd. Wt.	
	(in.)	(mm)	(lbs.)	(kg)
<b>33UPS-SW</b>	33.75	857	2	.9
<b>54UPS-SW</b>	53.8125	1366	3	1.4
<b>63UPS-SW</b>	61.8125	1570	3.5	1.6

Job \_\_\_\_\_



We put space to work.

## Super Erecta Shelf® Wire Shelving

### Super Wide Shelving

- **High-density Storage:** Super Wide shelves have a greater storage area for holding large quantities of supplies, especially large, bulky objects, providing maximum storage in minimum space.

- **Load Capacity (evenly distributed) per shelf:**

Depths: 30" and 36" (760 and 914mm)

800 lbs. (363kg) for lengths 48" (1219mm) or shorter.

600 lbs. (272kg) for lengths 54" (1370mm) or longer.

Cat. No. Chrome	Cat. No. Metroseal Green (K3) with Microban	Cat. No.. Metroseal Gray (K4) with Microban	Cat. No. Stainless Steel	Nominal Width/Length		Approx. Pkd. Wt.	
				(in.)	(mm)	(lbs.)	(kg)
3036NC	3036NK3	3036NK4	3036NS	30x36	760x914	14.2	6.4
3048NC	3048NK3	3048NK4	3048NS	30x48	760x1219	17.7	8.0
3060NC	3060NK3	3060NK4	3060NS	30x60	760x1524	20.2	9.2
3072NC	3072NK3	3072NK4	3072NS	30x72	760x1829	22.7	10.3
3636NC	3636NK3	-	3636NS	36x36	910x914	16.7	7.6
3648NC	3648NK3	-	3648NS	36x48	910x1219	21.6	9.8
3660NC	3660NK3	-	3660NS	36x60	910x1524	26.4	12.0
3672NC	3672NK3	-	3672NS	36x72	910x1829	31.6	14.3

**Note:** The actual length of the shelves is 1/8" (3.2mm) shorter than the nominal dimension shown. The actual depth of the shelves is 1/8" (3.2mm) greater than the nominal dimension shown.



### Foot Plates

- Use to bolt units to the floor, or when a broader, more stable foot is desired. Foot plates also help to protect floors by distributing the point load of the shelving unit across a larger contact point.
- Foot plates (completely tightened) add .125" (3mm) to the specified heights of each stationary post on the table.

Zinc Cat. No. **9993Z**

Stainless Steel Cat. No. **9993S**



### "S" Hook

- Used to add on shelving units with only two posts required. Order two per shelf level.

Cat. No. **9995Z**



an Ali Group Company



The Spirit of Excellence



We put space to work.

Item # \_\_\_\_\_

Job \_\_\_\_\_

## Super Erecta® Shelf Wire Shelving



- **Unique Design:** The open wire design of these shelves minimizes dust accumulation and allows free circulation of air, greater visibility of stored items and greater light penetration.
- **Durable Construction:** Super Erecta shelves and posts are constructed of heavy-gauge carbon steel or Type 304 stainless steel.
- **Choice of Finishes:** Super Erecta Brite™ and chrome-plated for dry storage; Metroseal™ Epoxy (green or gray), and Type 304 stainless steel for corrosive environments; and attractive epoxy color options for merchandising applications.
- **Metroseal:** Proprietary rust-resistant finish is a durable epoxy coating over a protective zinc substrate. Metroseal contains Microban® antimicrobial product protection which continuously fights the growth of bacteria, mold, and mildew that cause stains and odors. 12-year limited warranty against rust and corrosion.
- **Versatile:** Super Erecta® Shelf wire shelving can adapt to your changing needs. By using various accessories, hundreds of shelving configurations become possible.
- **Fast, Secure Assembly:** SiteSelect® Posts have a double groove visual guide feature every 8" (203mm), circular grooves at 1" (25mm) increments, and are numbered at 2" (50mm) intervals. A patented, tapered split sleeve snaps together around each post. Tapered openings in the shelf corners slide over the tapered split sleeves providing a positive lock. Shelf is assembled in minutes without the use of any special tools.
- **Adjustability:** Shelves can be adjusted at 1" (25mm) intervals along the entire length of the post.
- **Shelf Ribs:** Run front to back, allowing you to slide items on and off shelves smoothly.
- **Shelf Accessibility:** Shelves can be loaded/unloaded easily from all sides. This open construction allows maximum use of storage cube.
- **Adjustable Feet:** Bolt levelers compensate for surface irregularities.

**Note:** Stainless stationary posts are equipped with stainless steel leveling feet.



Super Erecta Chrome Wire



Super Erecta with Metroseal



Gray Metroseal Epoxy  
Finish with Microban



Green Metroseal Epoxy  
Finish with Microban



**InterMetro Industries Corporation**  
North Washington Street, Wilkes-Barre, PA 18705  
Product Information. U.S. and Canada: 1.800.992.1776  
Outside U.S. and Canada: [www.metro.com/contactus](http://www.metro.com/contactus)

L02-006e  
Printed in U.S.A. 6/20

Information and specifications are subject to change without notice. Please confirm at time of order.

Copyright © 2020 InterMetro Industries Corp.



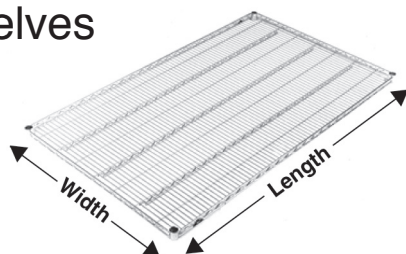
Super Erecta® Shelf Wire Shelving

10.01



# Super Erecta® Shelf Wire Shelving

## Wire Shelves



Aluminum Split Sleeve

- See spec sheet 10.14 for epoxy color options.
- Plastic split sleeves are included with each shelf  
Replacements are available: Cat. No. **9985** (bag of 4)
- Aluminum split sleeves are recommended for abusive mobile applications. Sleeves with stainless C-rings must be used for cart wash applications (exceeding 200°F/93°C) and for all autoclave applications.  
Cat. No. **9986Z** (bag of 4 with zinc C-rings)  
Cat. No. **9986S** (bag of 4 with stainless steel C-rings)
- Weight capacity (evenly distributed) per shelf  
800 lbs. (363kg) for lengths of 18" to 48" (457 to 1219mm)  
600 lbs. (272kg) for lengths of 54" (1370mm) or longer
- Weight capacity (evenly distributed) per unit.  
Stationary shelving units have a maximum load capacity (evenly distributed) of 2,000 lbs. (907kg). Mobile units have a maximum capacity of three times the caster load rating up to but not exceeding 1,000 lbs. (453kg) total. Consult the Metro catalog for caster load ratings.

Cat. No. Super Erecta Brite	Cat. No. Chrome	Cat. No. Metroseal Green (K3) with Microban	Cat. No. Metroseal Gray (K4) with Microban	Cat. No. Stainless	Nominal Width/Length		Approx. Pkd. Wt.	
					(in.)	(mm)	(lbs.)	(kg)
1424BR	1424NC	1424NK3	1424NK4	1424NS	14x24	355x610	5.3	2.4
1430BR	1430NC	1430NK3	1430NK4	1430NS	14x30	355x760	6.3	2.8
1436BR	1436NC	1436NK3	1436NK4	1436NS	14x36	355x914	7.5	3.4
1442BR	1442NC	1442NK3	1442NK4	1442NS	14x42	355x1066	8.3	3.8
1448BR	1448NC	1448NK3	1448NK4	1448NS	14x48	355x1219	9.4	4.3
1460BR	1460NC	1460NK3	1460NK4	1460NS	14x60	355x1524	11.8	5.4
1472BR	1472NC	1472NK3	1472NK4	1472NS	14x72	355x1829	14.4	6.5
-	1818NC	1818NK3	1818NK4	-	18x18	457x457	5.3	2.4
1824BR	1824NC	1824NK3	1824NK4	1824NS	18x24	457x610	6.1	2.7
1830BR	1830NC	1830NK3	1830NK4	1830NS	18x30	457x760	7.1	3.2
1836BR	1836NC	1836NK3	1836NK4	1836NS	18x36	457x914	8.2	3.7
1842BR	1842NC	1842NK3	1842NK4	1842NS	18x42	457x1066	9.3	4.2
1848BR	1848NC	1848NK3	1848NK4	1848NS	18x48	457x1219	10.7	4.9
1854BR	1854NC	1854NK3	1854NK4	1854NS	18x54	457x1370	11.9	5.4
1860BR	1860NC	1860NK3	1860NK4	1860NS	18x60	457x1524	13.4	6.1
1872BR	1872NC	1872NK3	1872NK4	1872NS	18x72	457x1829	14.6	6.6
2124BR	2124NC	2124NK3	2124NK4	2124NS	21x24	530x610	10.1	4.6
2130BR	2130NC	2130NK3	2130NK4	2130NS	21x30	530x760	10.5	4.8
2136BR	2136NC	2136NK3	2136NK4	2136NS	21x36	530x914	10.7	4.9
2142BR	2142NC	2142NK3	2142NK4	2142NS	21x42	530x1066	11.5	5.2
2148BR	2148NC	2148NK3	2148NK4	2148NS	21x48	530x1219	11.9	5.4
2154BR	2154NC	2154NK3	2154NK4	2154NS	21x54	530x1370	12.9	5.8
2160BR	2160NC	2160NK3	2160NK4	2160NS	21x60	530x1524	13.4	6.1
2172BR	2172NC	2172NK3	2172NK4	2172NS	21x72	530x1829	14.4	6.5
2424BR	2424NC	2424NK3	2424NK4	2424NS	24x24	610x610	6.5	3.0
2430BR	2430NC	2430NK3	2430NK4	2430NS	24x30	610x760	8.3	3.8
2436BR	2436NC	2436NK3	2436NK4	2436NS	24x36	610x914	10.1	4.6
2442BR	2442NC	2442NK3	2442NK4	2442NS	24x42	610x1066	11.9	5.4
2448BR	2448NC	2448NK3	2448NK4	2448NS	24x48	610x1219	14.2	6.4
2454BR	2454NC	2454NK3	2454NK4	2454NS	24x54	610x1370	16.1	7.3
2460BR	2460NC	2460NK3	2460NK4	2460NS	24x60	610x1524	18.0	8.2
2472BR	2472NC	2472NK3	2472NK4	2472NS	24x72	610x1829	21.4	9.7

**Note:** The actual length of the shelves is 1/8" (3.2mm) shorter than the nominal dimension shown. The actual depth of the shelves is 1/8" (3.2mm) greater than the nominal dimension shown.

**Note:** The following restrictions apply to shelving units that utilize 14" (355mm) wide shelves:  
Free-standing units: Units taller than 63" (1600mm) must be properly fastened to the floor or wall using Metro foot plates or wall brackets.  
Mobile units: maximum allowable post height is 54" (1370mm).



# Super Erecta® Shelf Wire Shelving

## SiteSelect® Posts

**Stationary Posts** - Equipped with a leveling bolt to account for uneven floors.

- Height includes leveling bolt (completely tightened) and post cap. Leveling bolt can be adjusted 0.5" (13mm).
- Foot plates may be ordered separately and installed in place of leveling foot.
- Replacement leveling bolts: Zinc Cat. No. **RPF04-004**, Stainless Steel Cat. No. **RPF04-004C**
- Replacement post cap for standard posts: Black Cat. No. **RPC06-035**



SiteSelect Posts feature double grooves every 8" (203mm) to aid assembly.

Cat. No. Chrome	Cat. No. Metroseal Green (K3) with Microban	Cat. No.. Metroseal Gray (K4) with Microban	Cat. No. Stainless Steel	Actual Height		Approx. Pkd. Wt.	
				(in.)	(mm)	(lbs.)	(kg)
<b>7P</b>	<b>7PK3</b>	<b>7PK4</b>	-	7.375	187	0.5	0.3
<b>13P</b>	<b>13PK3</b>	<b>13PK4</b>	<b>13PS</b>	14.375	365	1	0.5
<b>27P</b>	<b>27PK3</b>	<b>27PK4</b>	<b>27PS</b>	28.375	720	1.75	0.75
<b>33P</b>	<b>33PK3</b>	<b>33PK4</b>	<b>33PS</b>	34.375	873	2	0.9
<b>54P</b>	<b>54PK3</b>	<b>54PK4</b>	<b>54PS</b>	54.4375	1382	3	1.4
<b>63P</b>	<b>63PK3</b>	<b>63PK4</b>	<b>63PS</b>	62.4375	1585	3.5	1.6
<b>74P</b>	<b>74PK3</b>	<b>74PK4</b>	<b>74PS</b>	74.5	1892	4	1.8
<b>86P</b>	<b>86PK3</b>	<b>86PK4</b>	<b>86PS</b>	86.5	2197	5	2.3
<b>*96P</b>	-	-	-	96.5	2450	5.5	2.5

\*96P should not be used on units less than 24" (610mm) deep. Consult Metro Engineering for alternate recommendations.



Stationary Post



Post for Stem Caster

## Mobile Posts (For use with Stem Casters)

- Height includes post cap.

Cat. No. Chrome	Cat. No. Metroseal Green (K3) with Microban	Cat. No. Metroseal Gray (K4) with Microban	Cat. No. Stainless Steel	Actual Height		Approx. Pkd. Wt.	
				(in.)	(mm)	(lbs.)	(kg)
<b>13UP</b>	<b>13UPK3</b>	<b>13UPK4</b>	<b>13UPS</b>	13.75	349	1	0.5
<b>27UP</b>	<b>27UPK3</b>	<b>27UPK4</b>	<b>27UPS</b>	27.75	704	1.75	0.75
<b>33UP</b>	<b>33UPK3</b>	<b>33UPK4</b>	<b>33UPS</b>	33.75	857	2	0.9
<b>54UP</b>	<b>54UPK3</b>	<b>54UPK4</b>	<b>54UPS</b>	53.8125	1366	3	1.4
<b>63UP</b>	<b>63UPK3</b>	<b>63UPK4</b>	<b>63UPS</b>	61.8125	1570	3.5	1.6
-	<b>70UPK3</b>	<b>70UPK4</b>	-	69.75	1771	3.75	1.7
<b>74UP</b>	<b>74UPK3</b>	<b>74UPK4</b>	<b>74UPS</b>	73.875	1876	4	1.8
<b>86UP</b>	<b>86UPK3</b>	<b>86UPK4</b>	<b>86UPS</b>	85.875	2181	4.5	2.0

## Special Length Posts

Cut posts are available. Consult your Metro representative for more information.



Staked Post



Swaged Post

## Staked Posts (For use with Truck Dollies)

- Each post connects to the truck dolly through the stem receptacle. The stem receptacle is staked into the bottom of the post to ensure a durable connection in abusive mobile applications. Each includes a leveling/connecting bolt.

Cat. No. Chrome	Cat. No. Stainless Steel	Actual Height		Approx. Pkd. Wt.	
		(in.)	(mm)	(lbs.)	(kg)
<b>54P-STKD</b>	<b>54PS-STKD</b>	54.4375	1382	3	1.4
<b>63P-STKD</b>	<b>63PS-STKD</b>	62.4375	1585	3.5	1.6
<b>74P-STKD</b>	<b>74PS-STKD</b>	74.5	1892	4	1.8

## Swaged Posts (For use with Stem Casters in Cart Wash Applications)

- Each post has an aluminum cap swaged into the top of the post.

Cat. No. Stainless Steel	Actual Height		Approx. Pkd. Wt.	
	(in.)	(mm)	(lbs.)	(kg)
<b>33UPS-SW</b>	33.75	857	2	.9
<b>54UPS-SW</b>	53.8125	1366	3	1.4
<b>63UPS-SW</b>	61.8125	1570	3.5	1.6

Job \_\_\_\_\_



We put space to work.

## Super Erecta Shelf® Wire Shelving

### Super Wide Shelving

- **High-density Storage:** Super Wide shelves have a greater storage area for holding large quantities of supplies, especially large, bulky objects, providing maximum storage in minimum space.

- **Load Capacity (evenly distributed) per shelf:**

Depths: 30" and 36" (760 and 914mm)

800 lbs. (363kg) for lengths 48" (1219mm) or shorter.

600 lbs. (272kg) for lengths 54" (1370mm) or longer.

Cat. No. Chrome	Cat. No. Metroseal Green (K3) with Microban	Cat. No. Metroseal Gray (K4) with Microban	Cat. No. Stainless Steel	Nominal Width/Length		Approx. Pkd. Wt.	
				(in.)	(mm)	(lbs.)	(kg)
3036NC	3036NK3	3036NK4	3036NS	30x36	760x914	14.2	6.4
3048NC	3048NK3	3048NK4	3048NS	30x48	760x1219	17.7	8.0
3060NC	3060NK3	3060NK4	3060NS	30x60	760x1524	20.2	9.2
3072NC	3072NK3	3072NK4	3072NS	30x72	760x1829	22.7	10.3
3636NC	3636NK3	-	3636NS	36x36	910x914	16.7	7.6
3648NC	3648NK3	-	3648NS	36x48	910x1219	21.6	9.8
3660NC	3660NK3	-	3660NS	36x60	910x1524	26.4	12.0
3672NC	3672NK3	-	3672NS	36x72	910x1829	31.6	14.3

**Note:** The actual length of the shelves is 1/8" (3.2mm) shorter than the nominal dimension shown. The actual depth of the shelves is 1/8" (3.2mm) greater than the nominal dimension shown.

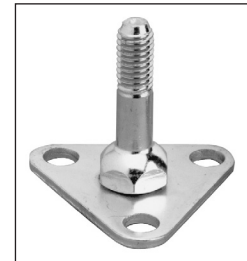


### Foot Plates

- Use to bolt units to the floor, or when a broader, more stable foot is desired. Foot plates also help to protect floors by distributing the point load of the shelving unit across a larger contact point.
- Foot plates (completely tightened) add .125" (3mm) to the specified heights of each stationary post on the table.

Zinc Cat. No. **9993Z**

Stainless Steel Cat. No. **9993S**



### "S" Hook

- Used to add on shelving units with only two posts required. Order two per shelf level.

Cat. No. **9995Z**



an Ali Group Company



The Spirit of Excellence



We put space to work.

Item # \_\_\_\_\_

Job \_\_\_\_\_

## Super Erecta® Shelf Wire Shelving



- **Unique Design:** The open wire design of these shelves minimizes dust accumulation and allows free circulation of air, greater visibility of stored items and greater light penetration.
- **Durable Construction:** Super Erecta shelves and posts are constructed of heavy-gauge carbon steel or Type 304 stainless steel.
- **Choice of Finishes:** Super Erecta Brite™ and chrome-plated for dry storage; Metroseal™ Epoxy (green or gray), and Type 304 stainless steel for corrosive environments; and attractive epoxy color options for merchandising applications.
- **Metroseal:** Proprietary rust-resistant finish is a durable epoxy coating over a protective zinc substrate. Metroseal contains Microban® antimicrobial product protection which continuously fights the growth of bacteria, mold, and mildew that cause stains and odors. 12-year limited warranty against rust and corrosion.
- **Versatile:** Super Erecta® Shelf wire shelving can adapt to your changing needs. By using various accessories, hundreds of shelving configurations become possible.
- **Fast, Secure Assembly:** SiteSelect® Posts have a double groove visual guide feature every 8" (203mm), circular grooves at 1" (25mm) increments, and are numbered at 2" (50mm) intervals. A patented, tapered split sleeve snaps together around each post. Tapered openings in the shelf corners slide over the tapered split sleeves providing a positive lock. Shelf is assembled in minutes without the use of any special tools.
- **Adjustability:** Shelves can be adjusted at 1" (25mm) intervals along the entire length of the post.
- **Shelf Ribs:** Run front to back, allowing you to slide items on and off shelves smoothly.
- **Shelf Accessibility:** Shelves can be loaded/unloaded easily from all sides. This open construction allows maximum use of storage cube.
- **Adjustable Feet:** Bolt levelers compensate for surface irregularities.

**Note:** Stainless stationary posts are equipped with stainless steel leveling feet.



Super Erecta Chrome Wire



Super Erecta with Metroseal



Gray Metroseal Epoxy  
Finish with Microban



Green Metroseal Epoxy  
Finish with Microban



**InterMetro Industries Corporation**  
North Washington Street, Wilkes-Barre, PA 18705  
Product Information. U.S. and Canada: 1.800.992.1776  
Outside U.S. and Canada: [www.metro.com/contactus](http://www.metro.com/contactus)

L02-006e  
Printed in U.S.A. 6/20

Information and specifications are subject to change without notice. Please confirm at time of order.

Copyright © 2020 InterMetro Industries Corp.



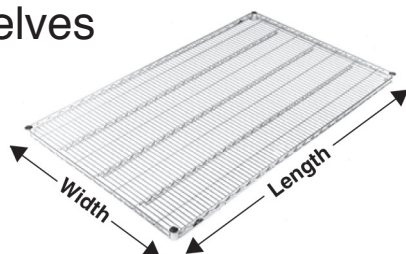
Super Erecta® Shelf Wire Shelving

10.01



# Super Erecta® Shelf Wire Shelving

## Wire Shelves



Aluminum Split Sleeve

- See spec sheet 10.14 for epoxy color options.
- Plastic split sleeves are included with each shelf  
Replacements are available: Cat. No. **9985** (bag of 4)
- Aluminum split sleeves are recommended for abusive mobile applications. Sleeves with stainless C-rings must be used for cart wash applications (exceeding 200°F/93°C) and for all autoclave applications.  
Cat. No. **9986Z** (bag of 4 with zinc C-rings)  
Cat. No. **9986S** (bag of 4 with stainless steel C-rings)
- Weight capacity (evenly distributed) per shelf  
800 lbs. (363kg) for lengths of 18" to 48" (457 to 1219mm)  
600 lbs. (272kg) for lengths of 54" (1370mm) or longer
- Weight capacity (evenly distributed) per unit.  
Stationary shelving units have a maximum load capacity (evenly distributed) of 2,000 lbs. (907kg). Mobile units have a maximum capacity of three times the caster load rating up to but not exceeding 1,000 lbs. (453kg) total. Consult the Metro catalog for caster load ratings.

Cat. No. Super Erecta Brite	Cat. No. Chrome	Cat. No. Metroseal Green (K3) with Microban	Cat. No. Metroseal Gray (K4) with Microban	Cat. No. Stainless	Nominal Width/Length		Approx. Pkd. Wt.	
					(in.)	(mm)	(lbs.)	(kg)
1424BR	1424NC	1424NK3	1424NK4	1424NS	14x24	355x610	5.3	2.4
1430BR	1430NC	1430NK3	1430NK4	1430NS	14x30	355x760	6.3	2.8
1436BR	1436NC	1436NK3	1436NK4	1436NS	14x36	355x914	7.5	3.4
1442BR	1442NC	1442NK3	1442NK4	1442NS	14x42	355x1066	8.3	3.8
1448BR	1448NC	1448NK3	1448NK4	1448NS	14x48	355x1219	9.4	4.3
1460BR	1460NC	1460NK3	1460NK4	1460NS	14x60	355x1524	11.8	5.4
1472BR	1472NC	1472NK3	1472NK4	1472NS	14x72	355x1829	14.4	6.5
-	1818NC	1818NK3	1818NK4	-	18x18	457x457	5.3	2.4
1824BR	1824NC	1824NK3	1824NK4	1824NS	18x24	457x610	6.1	2.7
1830BR	1830NC	1830NK3	1830NK4	1830NS	18x30	457x760	7.1	3.2
1836BR	1836NC	1836NK3	1836NK4	1836NS	18x36	457x914	8.2	3.7
1842BR	1842NC	1842NK3	1842NK4	1842NS	18x42	457x1066	9.3	4.2
1848BR	1848NC	1848NK3	1848NK4	1848NS	18x48	457x1219	10.7	4.9
1854BR	1854NC	1854NK3	1854NK4	1854NS	18x54	457x1370	11.9	5.4
1860BR	1860NC	1860NK3	1860NK4	1860NS	18x60	457x1524	13.4	6.1
1872BR	1872NC	1872NK3	1872NK4	1872NS	18x72	457x1829	14.6	6.6
2124BR	2124NC	2124NK3	2124NK4	2124NS	21x24	530x610	10.1	4.6
2130BR	2130NC	2130NK3	2130NK4	2130NS	21x30	530x760	10.5	4.8
2136BR	2136NC	2136NK3	2136NK4	2136NS	21x36	530x914	10.7	4.9
2142BR	2142NC	2142NK3	2142NK4	2142NS	21x42	530x1066	11.5	5.2
2148BR	2148NC	2148NK3	2148NK4	2148NS	21x48	530x1219	11.9	5.4
2154BR	2154NC	2154NK3	2154NK4	2154NS	21x54	530x1370	12.9	5.8
2160BR	2160NC	2160NK3	2160NK4	2160NS	21x60	530x1524	13.4	6.1
2172BR	2172NC	2172NK3	2172NK4	2172NS	21x72	530x1829	14.4	6.5
2424BR	2424NC	2424NK3	2424NK4	2424NS	24x24	610x610	6.5	3.0
2430BR	2430NC	2430NK3	2430NK4	2430NS	24x30	610x760	8.3	3.8
2436BR	2436NC	2436NK3	2436NK4	2436NS	24x36	610x914	10.1	4.6
2442BR	2442NC	2442NK3	2442NK4	2442NS	24x42	610x1066	11.9	5.4
2448BR	2448NC	2448NK3	2448NK4	2448NS	24x48	610x1219	14.2	6.4
2454BR	2454NC	2454NK3	2454NK4	2454NS	24x54	610x1370	16.1	7.3
2460BR	2460NC	2460NK3	2460NK4	2460NS	24x60	610x1524	18.0	8.2
2472BR	2472NC	2472NK3	2472NK4	2472NS	24x72	610x1829	21.4	9.7

**Note:** The actual length of the shelves is 1/8" (3.2mm) shorter than the nominal dimension shown. The actual depth of the shelves is 1/8" (3.2mm) greater than the nominal dimension shown.

**Note:** The following restrictions apply to shelving units that utilize 14" (355mm) wide shelves:  
Free-standing units: Units taller than 63" (1600mm) must be properly fastened to the floor or wall using Metro foot plates or wall brackets.  
Mobile units: maximum allowable post height is 54" (1370mm).



# Super Erecta® Shelf Wire Shelving

## SiteSelect® Posts

**Stationary Posts** - Equipped with a leveling bolt to account for uneven floors.

- Height includes leveling bolt (completely tightened) and post cap. Leveling bolt can be adjusted 0.5" (13mm).
- Foot plates may be ordered separately and installed in place of leveling foot.
- Replacement leveling bolts: Zinc Cat. No. **RPF04-004**, Stainless Steel Cat. No. **RPF04-004C**
- Replacement post cap for standard posts: Black Cat. No. **RPC06-035**



SiteSelect Posts feature double grooves every 8" (203mm) to aid assembly.

Cat. No. Chrome	Cat. No. Metroseal Green (K3) with Microban	Cat. No.. Metroseal Gray (K4) with Microban	Cat. No. Stainless Steel	Actual Height		Approx. Pkd. Wt.	
				(in.)	(mm)	(lbs.)	(kg)
<b>7P</b>	<b>7PK3</b>	<b>7PK4</b>	-	7.375	187	0.5	0.3
<b>13P</b>	<b>13PK3</b>	<b>13PK4</b>	<b>13PS</b>	14.375	365	1	0.5
<b>27P</b>	<b>27PK3</b>	<b>27PK4</b>	<b>27PS</b>	28.375	720	1.75	0.75
<b>33P</b>	<b>33PK3</b>	<b>33PK4</b>	<b>33PS</b>	34.375	873	2	0.9
<b>54P</b>	<b>54PK3</b>	<b>54PK4</b>	<b>54PS</b>	54.4375	1382	3	1.4
<b>63P</b>	<b>63PK3</b>	<b>63PK4</b>	<b>63PS</b>	62.4375	1585	3.5	1.6
<b>74P</b>	<b>74PK3</b>	<b>74PK4</b>	<b>74PS</b>	74.5	1892	4	1.8
<b>86P</b>	<b>86PK3</b>	<b>86PK4</b>	<b>86PS</b>	86.5	2197	5	2.3
<b>*96P</b>	-	-	-	96.5	2450	5.5	2.5

\*96P should not be used on units less than 24" (610mm) deep. Consult Metro Engineering for alternate recommendations.



Stationary Post



Post for Stem Caster

## Mobile Posts (For use with Stem Casters)

- Height includes post cap.

Cat. No. Chrome	Cat. No. Metroseal Green (K3) with Microban	Cat. No. Metroseal Gray (K4) with Microban	Cat. No. Stainless Steel	Actual Height		Approx. Pkd. Wt.	
				(in.)	(mm)	(lbs.)	(kg)
<b>13UP</b>	<b>13UPK3</b>	<b>13UPK4</b>	<b>13UPS</b>	13.75	349	1	0.5
<b>27UP</b>	<b>27UPK3</b>	<b>27UPK4</b>	<b>27UPS</b>	27.75	704	1.75	0.75
<b>33UP</b>	<b>33UPK3</b>	<b>33UPK4</b>	<b>33UPS</b>	33.75	857	2	0.9
<b>54UP</b>	<b>54UPK3</b>	<b>54UPK4</b>	<b>54UPS</b>	53.8125	1366	3	1.4
<b>63UP</b>	<b>63UPK3</b>	<b>63UPK4</b>	<b>63UPS</b>	61.8125	1570	3.5	1.6
-	<b>70UPK3</b>	<b>70UPK4</b>	-	69.75	1771	3.75	1.7
<b>74UP</b>	<b>74UPK3</b>	<b>74UPK4</b>	<b>74UPS</b>	73.875	1876	4	1.8
<b>86UP</b>	<b>86UPK3</b>	<b>86UPK4</b>	<b>86UPS</b>	85.875	2181	4.5	2.0

## Special Length Posts

Cut posts are available. Consult your Metro representative for more information.



Staked Post



Swaged Post

## Staked Posts (For use with Truck Dollies)

- Each post connects to the truck dolly through the stem receptacle. The stem receptacle is staked into the bottom of the post to ensure a durable connection in abusive mobile applications. Each includes a leveling/connecting bolt.

Cat. No. Chrome	Cat. No. Stainless Steel	Actual Height		Approx. Pkd. Wt.	
		(in.)	(mm)	(lbs.)	(kg)
<b>54P-STKD</b>	<b>54PS-STKD</b>	54.4375	1382	3	1.4
<b>63P-STKD</b>	<b>63PS-STKD</b>	62.4375	1585	3.5	1.6
<b>74P-STKD</b>	<b>74PS-STKD</b>	74.5	1892	4	1.8

## Swaged Posts (For use with Stem Casters in Cart Wash Applications)

- Each post has an aluminum cap swaged into the top of the post.

Cat. No. Stainless Steel	Actual Height		Approx. Pkd. Wt.	
	(in.)	(mm)	(lbs.)	(kg)
<b>33UPS-SW</b>	33.75	857	2	.9
<b>54UPS-SW</b>	53.8125	1366	3	1.4
<b>63UPS-SW</b>	61.8125	1570	3.5	1.6

Job \_\_\_\_\_



We put space to work.

## Super Erecta Shelf® Wire Shelving

### Super Wide Shelving

- **High-density Storage:** Super Wide shelves have a greater storage area for holding large quantities of supplies, especially large, bulky objects, providing maximum storage in minimum space.

- **Load Capacity (evenly distributed) per shelf:**

Depths: 30" and 36" (760 and 914mm)

800 lbs. (363kg) for lengths 48" (1219mm) or shorter.

600 lbs. (272kg) for lengths 54" (1370mm) or longer.

Cat. No. Chrome	Cat. No. Metroseal Green (K3) with Microban	Cat. No.. Metroseal Gray (K4) with Microban	Cat. No. Stainless Steel	Nominal Width/Length		Approx. Pkd. Wt.	
				(in.)	(mm)	(lbs.)	(kg)
3036NC	3036NK3	3036NK4	3036NS	30x36	760x914	14.2	6.4
3048NC	3048NK3	3048NK4	3048NS	30x48	760x1219	17.7	8.0
3060NC	3060NK3	3060NK4	3060NS	30x60	760x1524	20.2	9.2
3072NC	3072NK3	3072NK4	3072NS	30x72	760x1829	22.7	10.3
3636NC	3636NK3	-	3636NS	36x36	910x914	16.7	7.6
3648NC	3648NK3	-	3648NS	36x48	910x1219	21.6	9.8
3660NC	3660NK3	-	3660NS	36x60	910x1524	26.4	12.0
3672NC	3672NK3	-	3672NS	36x72	910x1829	31.6	14.3

**Note:** The actual length of the shelves is 1/8" (3.2mm) shorter than the nominal dimension shown. The actual depth of the shelves is 1/8" (3.2mm) greater than the nominal dimension shown.



### Foot Plates

- Use to bolt units to the floor, or when a broader, more stable foot is desired. Foot plates also help to protect floors by distributing the point load of the shelving unit across a larger contact point.
- Foot plates (completely tightened) add .125" (3mm) to the specified heights of each stationary post on the table.

Zinc Cat. No. **9993Z**

Stainless Steel Cat. No. **9993S**



### "S" Hook

- Used to add on shelving units with only two posts required. Order two per shelf level.

Cat. No. **9995Z**



an Ali Group Company



The Spirit of Excellence



Item # \_\_\_\_\_

Job \_\_\_\_\_



**Wire Shelving Accessories**

**WIRE SHELVING ACCESSORIES**

**Decorator Shelf Inlays**

Hardboard mats prevent small items from falling through wire shelves. Fit between posts and level with top of shelf edge. Single packed.

Material — 1/8" (3.2mm) thick cardboard with textured vinyl laminate on each side.

Cleaning instructions — May be wiped with damp cloth. Cannot be immersed in liquid.

Model No.	Width/Length		Description
	(in.)	(mm)	
1436BWI	14x36	355x914	Reversible, Black and White
1448BWI	14x48	355x1219	Reversible, Black and White
1824BWI	18x24	457x610	Reversible, Black and White
1836BWI	18x36	457x914	Reversible, Black and White
1848BWI	18x48	457x1219	Reversible, Black and White
2424BWI	24x24	610x610	Reversible, Black and White
2436BWI	24x36	610x914	Reversible, Black and White
2448BWI	24x48	610x1219	Reversible, Black and White

**Note:** Inlays interfere with the attachment of ledges and dividers. The user may modify the inlay to accommodate these accessories.



*Decorator Shelf Inlays*

**Clear Shelf Inlays**

Nearly invisible solid plastic mat retains the open-wire look of shelves and allows light penetration. Sold in packages of 4.

Material — 0.02" (0.5mm) thick PETG

Model No.	Width/Length	
	(in.)	(mm)
1436CI-4	14x36	355x914
1448CI-4	14x48	355x1219
1460CI-4	14x60	355x1524
1836CI-4	18x36	457x914
1848CI-4	18x48	457x1219
1860CI-4	18x60	457x1524
2136CI-4	21x36	530x914
2148CI-4	21x48	530x1219
2160CI-4	21x60	530x1524
2436CI-4	24x36	610x914
2448CI-4	24x48	610x1219
2460CI-4	24x60	610x1524



*Clear Shelf Inlays*

**Triangle Shelves**

Put unused corner space to work while keeping traffic aisles clear.

- Shelf sizes correspond to width (depth) of Super Erecta Shelving for add-on capability.
- Shelves attach to standard Super Erecta or qwikSLOT posts.
- Weight capacity — 100 lb. (45.4kg)

Model No. Chrome	Model No. Black	Size Width		Approx. Pkd. Wt.	
		(in.)	(mm)	(lbs.)	(kg)
H18TRC	H18TRB	18	457	15 1/2	7
H24TRC	H24TRB	24	610	21 1/2	10

Not intended for mobile applications.  
Maximum allowable usage height for free-standing unit is 54" (1370mm).



*Triangle Shelf*



**InterMetro Industries Corporation**  
North Washington Street  
Wilkes-Barre, PA 18705  
www.metro.com



**10.06**



# WIRE SHELVING ACCESSORIES

## Aluminum Split Sleeves

Improved design is easier to install. For high temperature, over the road, or conductive applications. Zinc or stainless steel retainer rings available to secure shelf. One bag required per shelf; 4 pairs per bag.

Model No.	Description
9986Z	Aluminum Split Sleeves with Zinc Rings
9986S	Aluminum Split Sleeves with Stainless Rings

**Note:** Cannot be used with Super Adjustable shelves.



## High Temperature Usage

Aluminum split sleeves — high temperature usage (Stationary Unit)

- A chrome plated Super Erecta wire shelving unit can be used to a maximum of 250°F (121°C).
- A stainless steel Super Erecta wire shelving unit can be used to 500°F (260°C).

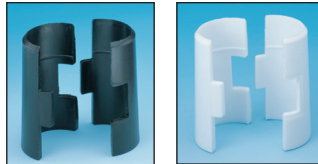
For mobile units, please factor the usage requirements of the caster.

## Replacement Plastic Split Sleeves for Super Erecta Shelves

One bag required per shelf; 4 pairs per bag.

Black. Model No. **9985**

White. Model No. **9985W**



**Note:** White post caps and white split sleeves are standard with white designer shelving only.

## Replacement Super Adjustable Super Erecta Corner Releases, Wedges, and Sleeves

Replacement parts for Super Adjustable and original Super Adjustable. One bag required per shelf. Each kit includes (4) corner releases, (4) wedges, and (4) sleeves.

Model No. **SAKITA2**



## “S” Hooks

Use to eliminate two posts per adjacent unit. Sold individually. Two are required per shelf. Model No. **9995Z**

**Notes:**

- May only be used in stationary applications.
- Must use a minimum of (2) posts per adjacent add-on unit.
- Weight capacities of adjacent shelving units connected by “S” hooks – standard weight capacities of shelves and stationary units apply. For the most common configurations involving 54" (1370mm) or taller posts and 4-tiers of shelving, weight capacities are as follows: starter unit with (4) posts = 2,000 lbs. (907kg) evenly distributed; add-on unit with (2) posts and (2) “S” hooks per level = 2,000 lbs. (907kg) evenly distributed.
- The distance between two adjacent shelving units — collar to collar — connected by “S” hooks is 1/16" (1.6mm).



## Security Shelf Connector Kit

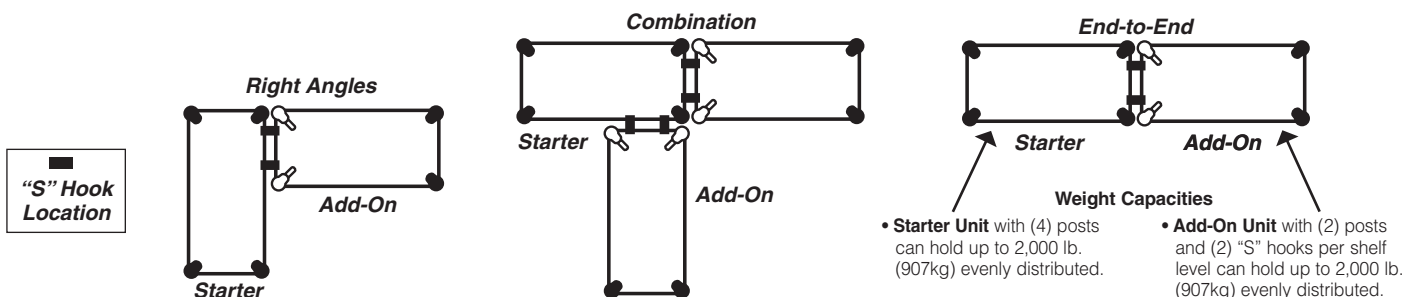
Kit includes (2) “S” hooks, (2) screws, and (2) bolts. Used for added security to “add-on” shelving units. One connector kit required for each connection.

Chrome.

Model No. **H9995C**

Black.

Model No. **H9995B**





# WIRE SHELVING ACCESSORIES

## Post Clamps

Joins units together for maximum strength.

Zinc-plated. Model No. **9994Z**

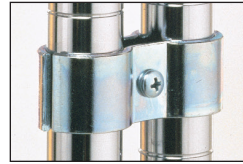
Black. Model No. **9994BL**

### Notes:

A post clamp adds 5/32" (4mm) between the base of the collars on adjacent units.

The distance between the snake frames on the adjacent units is 7/32" (6mm).

Enclosure panels CANNOT be attached on the ends where post clamps join adjacent units.

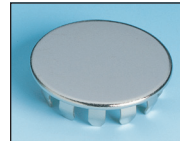


## Hole Plugs (for Shelves)

This chrome-plated cover is used to fill shelf-corner openings.

Use whenever posts have been eliminated by "S" hooks.

Model No. **9997C**



## Foot Plates

Use to bolt units to the floor, or when a broader, more stable foot is desired. Replaces standard post leveling bolt.

Zinc. Model No. **9993Z**

Stainless Steel. Model No. **9993S**

Black. Model No. **9993BL**



## Wall Clamps

Give single units greater stability.

Model No. **9984C**

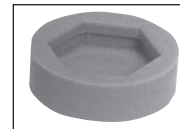


## Glides

Smooth polymer cover fits over leveling bolt to protect floors.

Material — HDPE

Model No. **9991P**



## Decorative Leveling Foot

Decorative alternative for post. Compensates for uneven surfaces.

Chrome. Model No. **HDFC**

Black. Model No. **HDFB**



## Decorative Casters

- Black nylon housing with non-marking polymer tread.
- 2 1/2" (63mm) models have threaded stem and attach to standard stationary shelving posts. Weight capacity of unit with (4) HDC3BB casters is 300 lb. (136kg).
- 4" (100mm) casters have a non-threaded stem and attach to standard mobile (-UP) posts. Weight capacity of a unit is 675 lb. (306kg)

Model No.	Type	Diameter	
		(in.)	(mm)
HDC3BB	Swivel/Brake	2 1/2	63
HDC5B	Swivel	4	100
HDC5BB	Swivel/Brake	4	100



**HDC5B**

**HDC5BB**

Job \_\_\_\_\_

10.06



### Keyboard Tray

Attaches to all Metro wire shelves, 36" (914mm) length or longer. Mouse Tray adapts to left or right of Keyboard Tray. Flip-top compartment provides convenient storage. Constructed of durable high-impact polystyrene. Assembles easily.

- Hardware included for attachment to Metro wire shelves; template provided for attachment to solid desk surfaces.
- Keyboard Tray Dimensions: 22" L. (559mm) x 15 1/2" W. (394mm).
- Dimension with Mouse Tray fully extended: 29 1/2" L. (749mm) x 15 1/2" W. (394mm).

Model No. **CKS1522BL**



**Keyboard Tray**

### Wire Management Device

Keeps wires and cables neatly organized both horizontally and vertically. Easily snaps over the edge of any Super Erecta wire or qwikSLOT shelf. Black epoxy finish.

Model No.	Width (in.) (mm)	Length (in.) (mm)	Approx. Pkd. Wt. (lbs.) (kg)
CWM	2 51	2 51	.5 .25

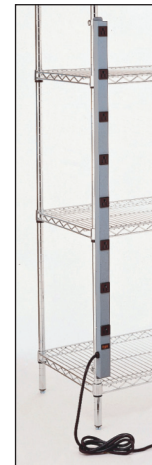


**Wire Management Device**

### Power Strip

- Mounts quickly and easily to either a Super Erecta or qwikSLOT post.
- Includes a 15 foot (4572mm) long cord.
- Mounting brackets and hardware included.
- UL/CSA approved.
- 15 Amp Circuit Breaker.
- Illuminated Power Switch. 15A/125VAC.60Hz/1875 W.
- Gray/blue finish.
- 14/3 SJT Molded Power Supply Cord.

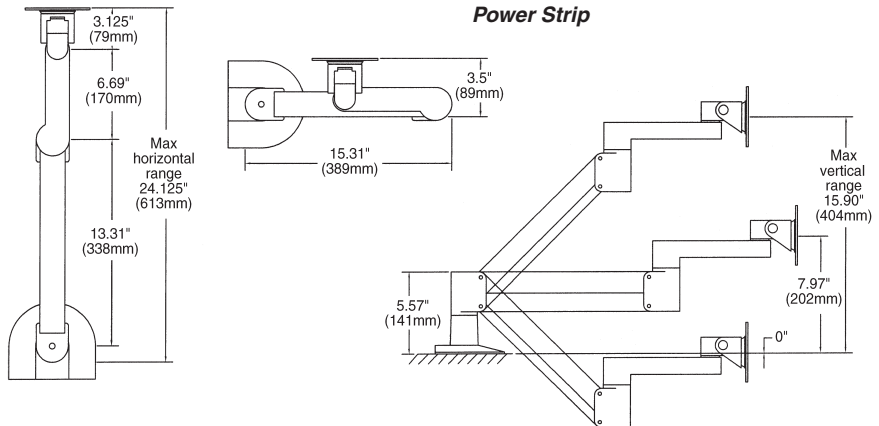
Model No.	Width (in.) (mm)	Length (in.) (mm)	Approx. Pkd. Wt. (lbs.) (kg)
CPS48	1 1/2 38	48 1219	6 2.72



**Power Strip**

### Surface Mount Swing Arm for Flat Monitor

Model No. **LTFMA**



All Metro Catalog Sheets are available on our website: [www.metro.com](http://www.metro.com)



**InterMetro Industries Corporation**  
 North Washington Street, Wilkes-Barre, PA 18705  
 Phone: 570-825-2741  
 Product Information. U.S. and Canada: 1.800.992.1776  
 Outside U.S. and Canada: [www.metro.com/contactus](http://www.metro.com/contactus)

L02-009  
 Printed in U.S.A. Rev. 03/14

Information and specifications are subject to change without notice. Please confirm at time of order

Copyright © 2014 InterMetro Industries Corp.

Wire Shelving Accessories