



This is
SWTJC
DR. HECTOR GONZALES

MISSION

Southwest Texas Junior College enriches lives and advances growth through the education of our diverse communities.

BELIEFS

We aspire to achieve excellence by purposefully:

- Committing to success
- Inspiring trust, transparency, professionalism and accountability
- Engaging all with empathy and care

We embrace inclusivity by:

- Valuing every individual as unique and whole
- Fostering a culture of acceptance
- Respecting diversity of thought

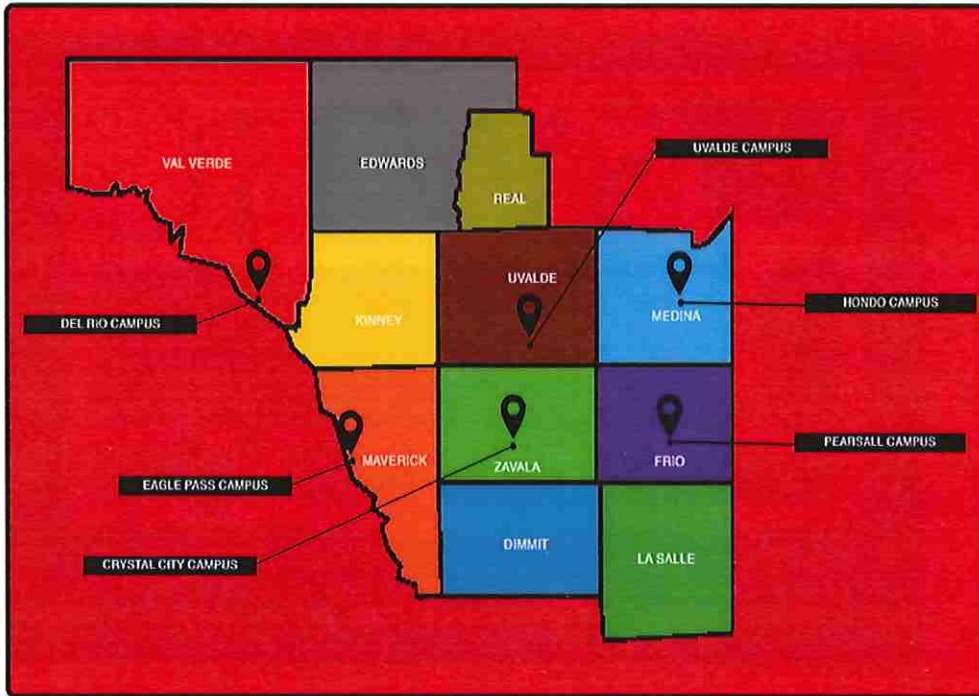
We champion opportunities for:

- Life-long learning
- Professional, personal, and community growth
- Institutional innovation

Strategic GOALS

1. **Start/Enroll:** SWTJC will foster a sense of inclusivity and engagement for all students and stakeholders with empathy, care, and outreach.
2. **Persist/Succeed:** SWTJC will champion opportunities for student success.
3. **Complete/Ascend:** SWTJC will increase personal, professional, and community growth.





Service **REGION**

SWTJC's four campuses are located in Uvalde, Crystal City, Del Rio, and Eagle Pass. We serve the 11-county region around our campuses.

Associate DEGREES

SWTJC offers 5 types of associate degrees:

Associate of Arts (AA)

- General Studies
- Fields of Study - Business, Criminal Justice, Engineering

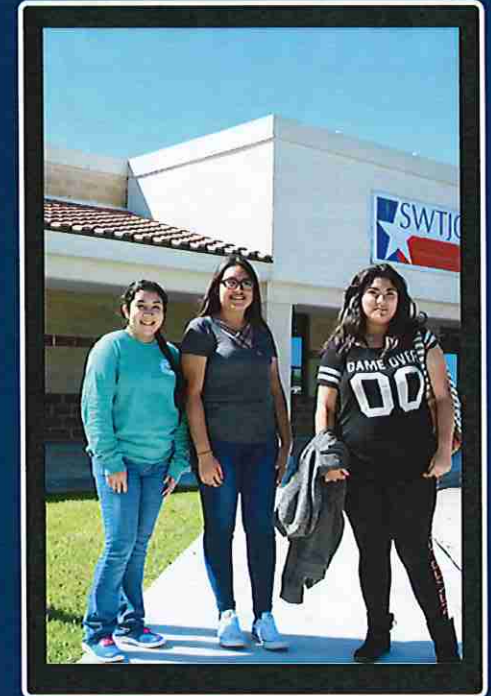
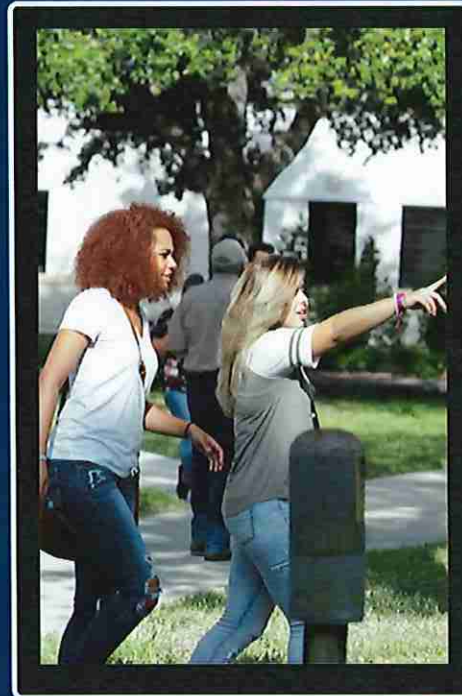
Associate of Science (AS)

Associate of Science Engineering Science (ASES)

Associate of Arts in Teaching (AAT)

Associate of Applied Science (AAS)

- Air Conditioning & Refrigeration Technology
- Automotive Technology
- Business Management
- Business Office Technology
- Child Development
- Computer Information Systems
- Construction Carpentry
- Criminal Justice
- Diesel Technology
- Emergency Medical Technician
- Radiologic Technology
- Registered Nursing
- Welding Technology
- Wildlife Management



CERTIFICATES

Level 1 Basic Certificate:

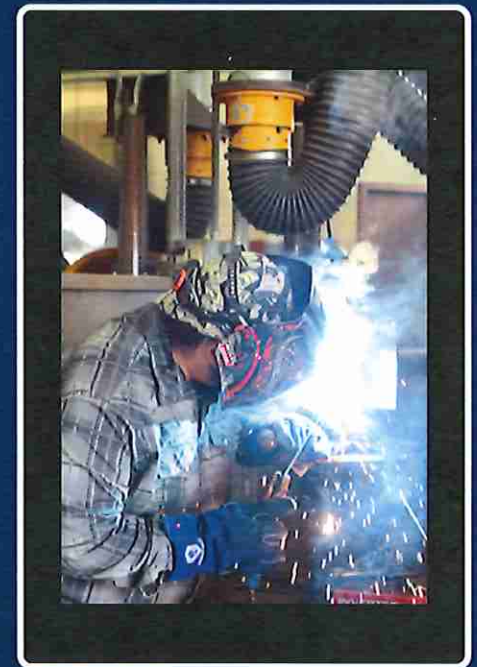
- Air Conditioning & Refrigeration Technology
- Automotive Technology
- Aircraft General Maintenance
- Business Management
- Business Office Technology
- Child Development
- Construction Carpentry
- Cosmetology
- Diesel Technology
- Emergency Medical Technician
- Law Enforcement Academy
- Patient Care Technician
- Powerline Technology
- Vocational Nursing
- Welding Technology
- Wildlife Management

Level 1 Advanced Certificate:

- Air Conditioning & Refrigeration Technology
- Automotive Technology
- Business Management
- Business Office Technology
- Diesel Technology
- Emergency Medical Technician
- Welding Technology

Level 2 Certificate:

- Airframe Mechanics



Upcoming **PROGRAMS**

SWTJC is working to meet the needs of the regional workforce by developing the following new programs.

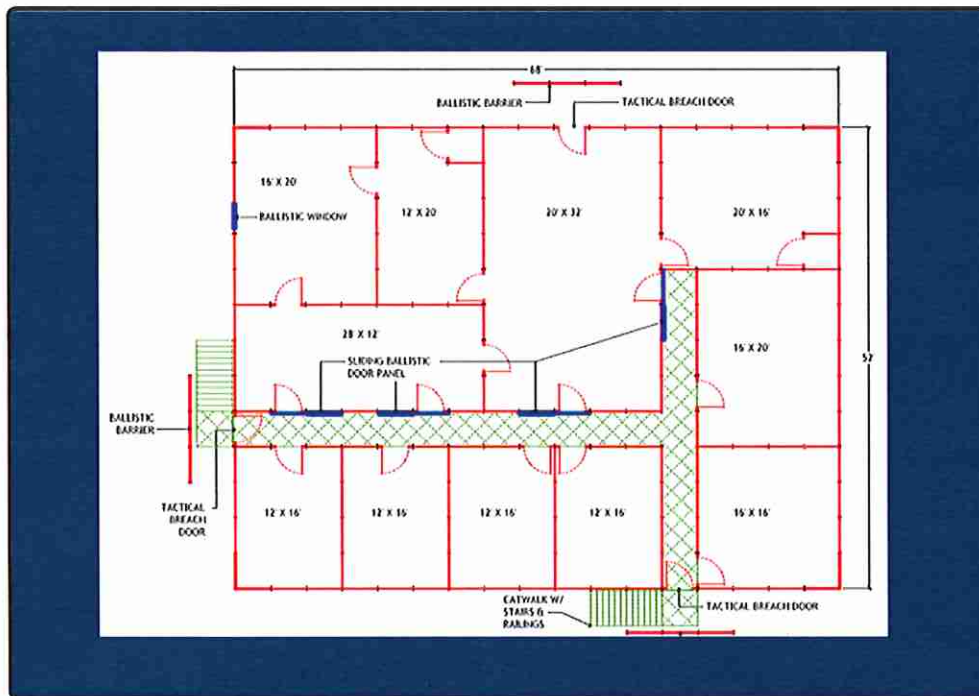
SURGICAL TECHNICIAN

CYBERSECURITY

CONSTRUCTION SCIENCE

DRONE TECHNOLOGY

ELECTRICIAN PRE-APPRENTICESHIP



ACTIVE SHOOTER TRAINING FACILITY

SWTJC has initiated the process to request federal appropriations to construct and equip an active shooter training facility at the Uvalde campus.

TXCCCF PROPOSED FUNDING MODEL

FUNDING FOR OUTCOMES

Develop a modern community college funding model that distributes the majority of state funding based on measurable outcomes aligned with regional and state workforce needs.

AFFORDABILITY FOR STUDENTS

Increase funding for TEOG, provide financial aid through colleges for dual credit students incorporate a max dual credit tuition rate, and expand partnerships for paid work-based learning opportunities.

INVESTMENT IN COLLEGE CAPACITY

Provide seed grants for programs in high-demand fields, facilitate inter-institutional partnerships, and update state policies around non-credit programs that are convertible and stackable with credit-bearing programs.





Campus PROFILES

SWTJC encompasses four campuses and two instructional sites in addition to delivering/facilitating dual credit classes at 25 regional school districts.



SWTJC UVALDE

Technical Programs:

Air Conditioning & Ref. Technology
 Aircraft General Maintenance
 Automotive Technology
 Business Management
 Business Office Technology
 Construction Carpentry
 Child Development
 Computer Information Systems
 Cosmetology
 Criminal Justice
 Emergency Medical Services
 Law Enforcement Academy
 Patient Care Technician
 Powerline Technology
 Registered Nursing
 Vocational Nursing
 Welding
 Wildlife Management

Academic Programs:

Associate of Arts
 Associate of Science
 Associate of Engineering Science
 Associate of Arts in Teaching
 Associate of Applied Science

Upcoming:

Cybersecurity
 Surgical Technician
 Construction Sciences
 Drone Technology

Adult Education & Literacy:

ESL Classes
 GED Classes
 US Citizenship
 Find a Career



HEADCOUNT BY
 CAMPUS

6,241

TOTAL STUDENTS

Location	Students	Percent
Uvalde	999	16%

SWTJC DEL RIO

Technical Programs:

Aircraft General Maintenance
 Airframe Mechanic
 Business Management
 Business Office Technology
 Child Development
 Computer Information Systems
 Criminal Justice
 Patient Care Technician
 Registered Nursing
 Vocational Nursing

Academic Programs:

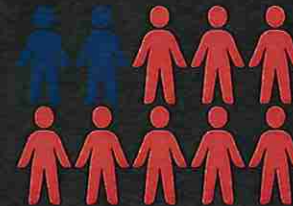
Associate of Arts
 Associate of Science
 Associate of Engineering Science
 Associate of Arts in Teaching
 Associate of Applied Science

Upcoming:

Cybersecurity

Adult Education & Literacy:

ESL Classes
 GED Classes
 US Citizenship
 Find a Career



HEADCOUNT BY
CAMPUS

6,241

TOTAL STUDENTS

Location	Students	Percent
Del Rio	795	13%

SWTJC EAGLE PASS

Technical Programs:

Business Management
 Business Office Technology
 Child Development
 Computer Information Systems
 Criminal Justice
 Diesel Technology
 Emergency Medical Services
 Law Enforcement Academy
 Powerline Technology
 Registered Nursing
 Vocational Nursing
 Welding

Upcoming:

Cybersecurity
 Electrician Pre-Apprenticeship

Academic Programs:

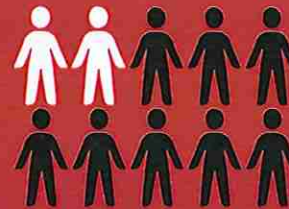
Associate of Arts
 Associate of Science
 Associate of Engineering Science
 Associate of Arts in Teaching
 Associate of Applied Science

Workforce Education:

Computer Course
 Health Care Careers
 Heavy Equipment Training
 Professional Development
 Professional Truck Driving School

Adult Education & Literacy:

ESL Classes
 GED Classes
 US Citizenship
 Find a Career



HEADCOUNT BY
 CAMPUS
6,241

TOTAL STUDENTS

Location	Students	Percent
Eagle Pass	909	15%

SWTJC CRYSTAL CITY, HONDO, PEARSALL

Technical Programs:

Air Conditioning & Ref. Technology - Hondo
 Business Management
 Business Office Technology
 Child Development
 Computer Information Systems
 Criminal Justice
 Patient Care Technician - Hondo
 Welding - Crystal City & Hondo

Academic Programs:

Associate of Arts
 Associate of Science
 Associate of Engineering Science
 Associate of Arts in Teaching
 Associate of Applied Science

Adult Education & Literacy:

ESL Classes
 GED Classes
 US Citizenship
 Find a Career



HEADCOUNT BY
CAMPUS

6,241

TOTAL STUDENTS

Location	Students	Percent
Crystal City, Hondo, Pearsall	241	4%

SWTJC
DUAL CREDIT/ECHS

Dual Credit (Academic):

Big Springs Charter
 Carrizo Springs HS
 Charlotte HS
 Comstock HS
 Cotulla HS
 Crystal City HS
 D'Hanis HS
 Eagle Pass ISD (EPHS & CC Winn)
 Heritage Academy of Del Rio
 Hill Country Youth Ranch
 Hondo HS
 La Pryor HS
 Leakey HS
 Medina Valley HS
 Nueces Canyon HS
 Pearsall HS
 Rocksprings HS
 Sabinal HS
 San Felipe Del Rio ISD
 Uvalde HS
 Utopia HS
 Uvalde Classical Academy

Early College High School:

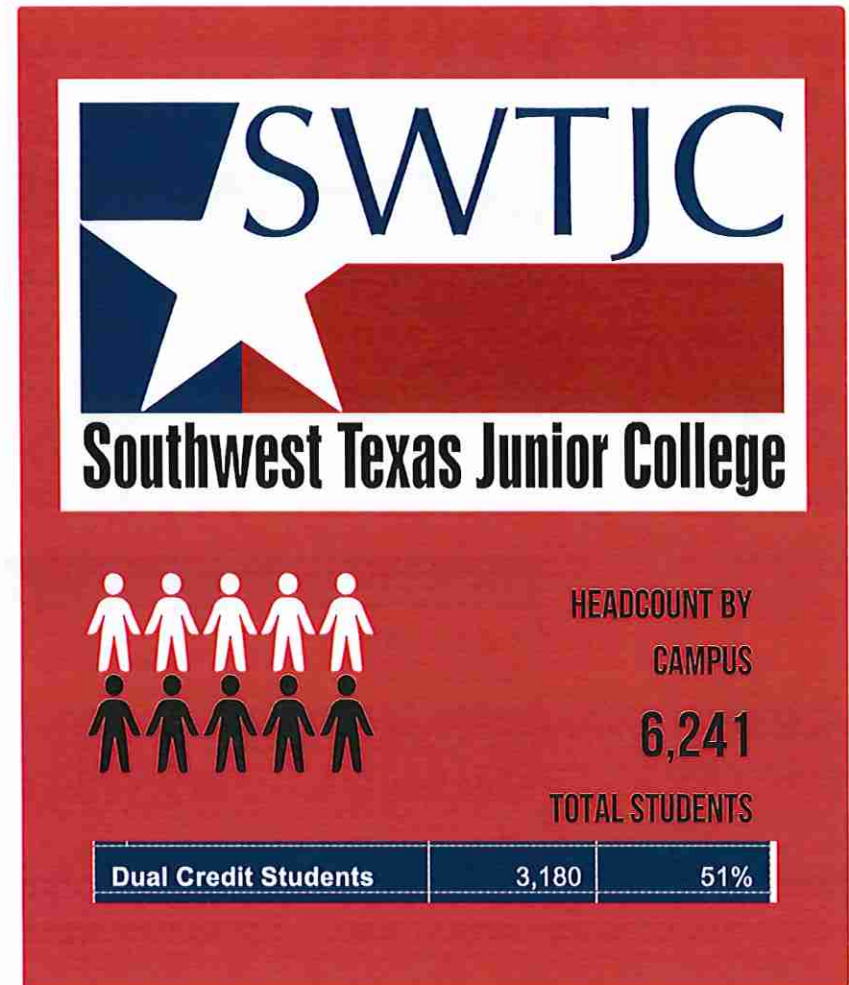
Dilley ECHS
 San Felipe Del Rio ECHS
 Uvalde ECHS

Early College Academy:

Eagle Pass Academy
 Knippa Academy
 Natalia Academy

Dual Credit (Technical):

Carrizo Springs Tech
 Cotulla Tech
 Crystal City Tech
 Dilley Tech
 Eagle Pass ISD Tech
 La Pryor Tech
 Leakey Tech
 Medina Valley Tech
 Natalia Tech
 Nueces Canyon Tech
 Pearsall Tech
 Sabinal Tech
 San Felipe Del Rio ISD Tech
 Uvalde Tech



QUICK FACTS

6
Campuses

11
Counties

6,241
Total Students

Location	Students	Percent
Uvalde	999	16%
Crystal City, Hondo, Pearsall	241	4%
Del Rio	795	13%
Eagle Pass	909	15%
Internet	1,017	16%
Other Locations	2,280	36%
Total	6,241	



1,606
Degrees &
Certificates
Awarded

Award Type	Number	Percent
Academic (AA, AS)	578	36%
Technical (AAS)	71	4%
Certificate (Cert 1 & Cert 2)	510	32%
Core Curriculum Completion	394	25%
Field of Study	53	3%
Total	1,606	

Student Demographics

Total Headcount	6,241	
Full-time/Part-time Status		
Part-Time	4,288	69%
Full-Time	1,953	31%
Average Semester Hours		
Per Student	8.6	
Dual Credit Students	3,180	51%
Average Age	20	
Gender		
Female	3,656	59%
Male	2,585	41%
Ethnicity		
Hispanic	5,485	88%
White, Non-Hispanic	554	9%
Black, Non-Hispanic	50	1%
Other	153	2%
Tuition Status		
In-District	1,128	18%
Out-of-District	4,988	80%
Non-Resident	125	2%
Basis of Admission		
First-Time-In-College	910	15%
Continuing Student	5,138	82%
Transfer Student	193	3%
Developmental Education (D.E.)		
Enrolled in D.E.	408	7%
Not Enrolled in D.E.	5,833	93%

MORE QUICK FACTS

	% of All Class Sections	% of Total Enrollment
Traditional	48%	56%
Interactive Video	7%	13%
Internet and VCT	25%	12%
Special/Linked	14%	14%
Hybrid	5%	5%
Total Class Sections		1,163
Total Enrollments		14,496

CLASSES BY MODE OF INSTRUCTION

Workforce Education

Includes workforce continuing education, customized training, adult basic education, and leisure and fitness courses.

2022 Qtr 1 Enrollment Classes 128 58

WORKFORCE EDUCATION

Type of Aid	Amount	Students Receiving Aid
Grants, Scholarships & other gift aids	\$5,810,169	2,395
College Work-Study	\$111,362	51
Loans	\$566,402	184
Totals	\$6,487,933	2,630

FINANCIAL AID



Program **HIGHLIGHTS**

Wildlife Management, Powerline Technology, and Patient Care Technician

PROGRAM HIGHLIGHT





ENROLLMENT

- Average annual enrollment = 77 students
 - 57% male/43% female
 - 57% Hispanic/43% Anglo
- Student Residency
 - 74% from Southwest Texas
 - 26% from other areas
 - 10% Central Texas
 - 7% Southeast Texas
 - 5% North Texas
 - 2% South Texas
 - 2% Mexico
 - Fun fact: We've had students from as far away as Africa come to SWTJC for our Wildlife Management program

STUDENT ENGAGEMENT IN THE FIELD

1200+ clock hours outside of the classroom:

- Partnerships with 23 ranches
- Cooperation agreements with 5 agencies

Current student employment/internships:

- 9 current students employed in the field
- 13 students participating in internships



PROGRAM HIGHLIGHT

Powerline Technology

A photograph of two utility workers in white hard hats and safety gear working on a power line. They are positioned in a white bucket that is part of a utility vehicle. The bucket has the logo for Southwest Texas Junior College (SWTJC) and text that reads "Southwest Texas Junior College", "Powerline Tech Training", and "830-758-4124". The workers are focused on a piece of equipment attached to a wooden utility pole. The background shows green trees and a clear sky.

SWTJC
Southwest Texas Junior College
Powerline Tech Training
830-758-4124

ENROLLMENT

- Expanded the program to our Chittim Technical Education Center in Eagle Pass
 - We can now run 4 cohorts per academic year
- Enrollment has steadily increased since 2019 when we hired our full-time instructor
 - 2019-2020 - 31 students
 - 2020-2021 - 45 students
 - 2021-2022 - 47 students
 - 2022-2023 - 16 cohort 1
- Student Residency
 - 93% from Southwest Texas
 - 7% from areas as far as Livingston and Crosbyton
- The program continues to gain interest in areas outside of Southwest Texas



PROGRAM HIGHLIGHT

Patient Care Technician



ENROLLMENT

- The Patient Care Technician (PCT) program encompasses 5 certifications:
 - Certified Nurse Aide
 - EKG Technician
 - Phlebotomy Technician
 - Medical Assistant
 - Certified Patient Care Technician Assistant
- The PCT program is available at 3 campuses and 10 dual credit partner institutions
 - 480 students per year are enrolled
 - 95% completion rate
 - 90% pass rate on all 5 credentials
- Employment rate of graduates is high because they have 5 credentials
 - Several area hospitals now require all 5 credentials for employment





Dr. Hector Gonzales
CONTACT

830-278-4401

hegonzales@swtjc.edu

www.swtjc.edu
