



ASBVI

ASD

Board Meeting
04.15.2025

Arkansas School for the Deaf & Blind

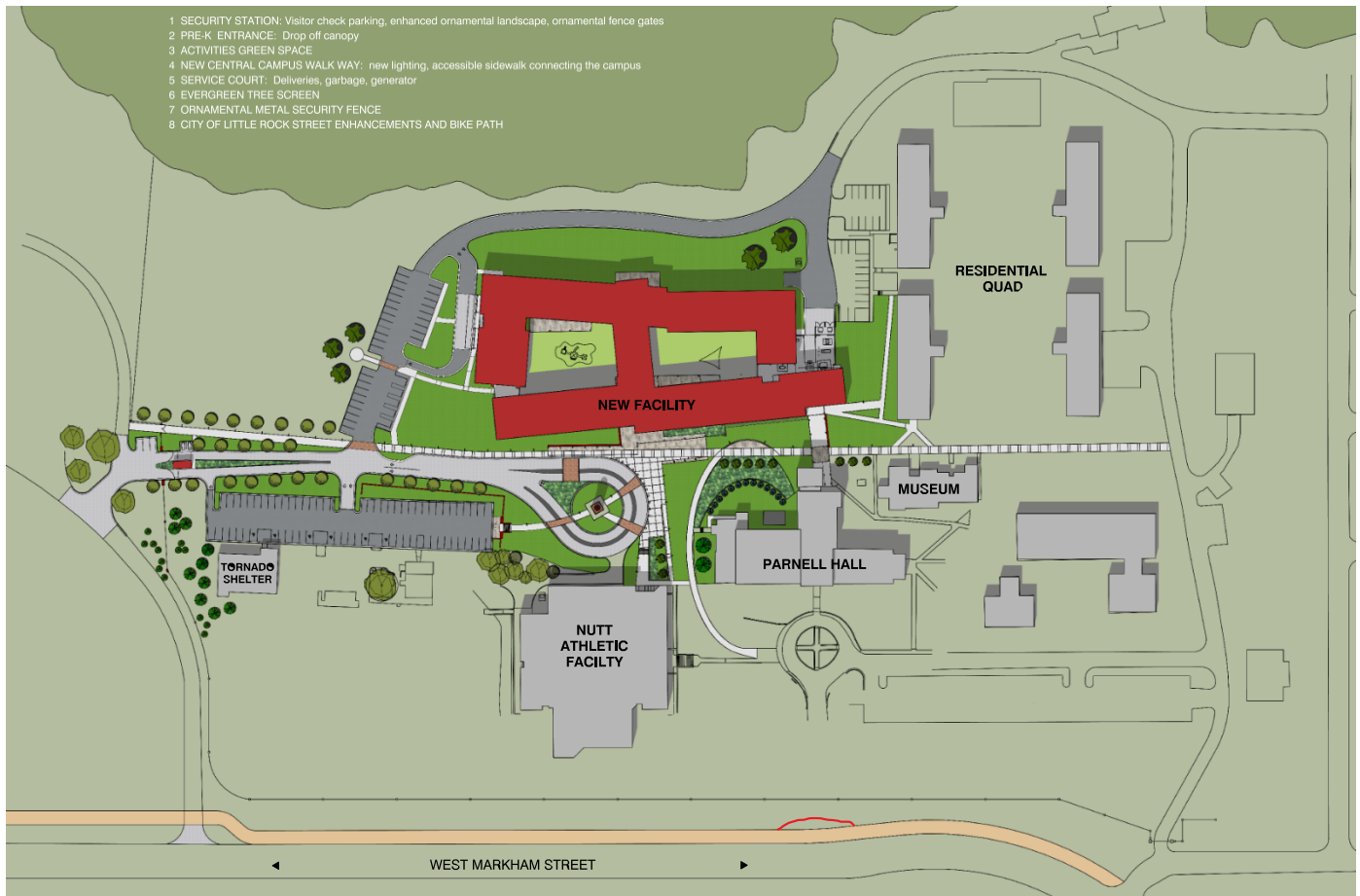




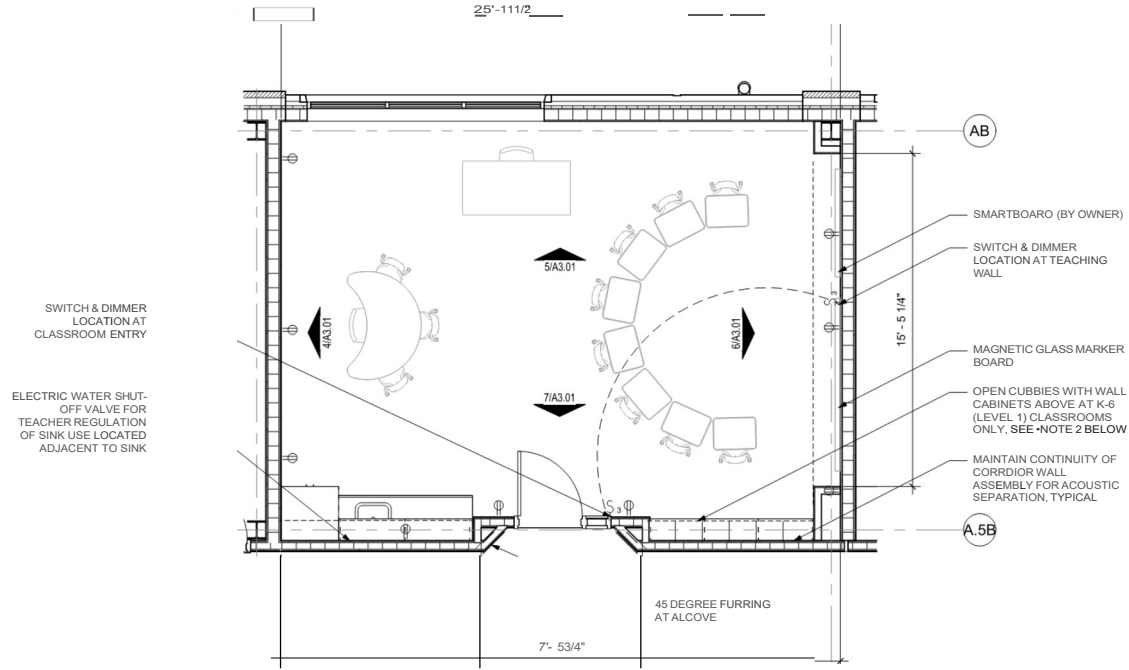
The project must create integrated spaces that encourage collaboration and flexible, innovative learning while healing the divide between the two campuses faculty and staff group

The project must create a beacon of best practice for educating children who are deaf and blind - a national model to serve students and their families

- 1 SECURITY STATION: Visitor check parking, enhanced ornamental landscape, ornamental fence gates
- 2 PRE-K ENTRANCE: Drop off canopy
- 3 ACTIVITIES GREEN SPACE
- 4 NEW CENTRAL CAMPUS WALK WAY: new lighting, accessible sidewalk connecting the campus
- 5 SERVICE COURT: Deliveries, garbage, generator
- 6 EVERGREEN TREE SCREEN
- 7 ORNAMENTAL METAL SECURITY FENCE
- 8 CITY OF LITTLE ROCK STREET ENHANCEMENTS AND BIKE PATH



WEST MARKHAM STREET



SWITCH & DIMMER LOCATION AT CLASSROOM ENTRY

ELECTRIC WATER SHUT-OFF VALVE FOR TEACHER REGULATION OF SINK USE LOCATED ADJACENT TO SINK

AB

SMARTBOARD (BY OWNER)
SWITCH & DIMMER LOCATION AT TEACHING WALL

MAGNETIC GLASS MARKER BOARD
OPEN CUBBIES WITH WALL CABINETS ABOVE AT K-6 (LEVEL 1) CLASSROOMS ONLY, SEE NOTE 2 BELOW

MAINTAIN CONTINUITY OF CORRIDOR WALL ASSEMBLY FOR ACOUSTIC SEPARATION, TYPICAL

A.5B

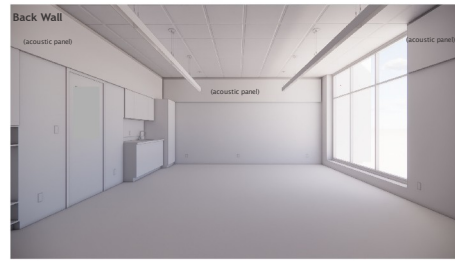
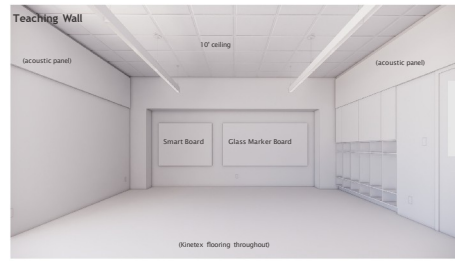
45 DEGREE FURRING AT ALCOVE

0 CLASSROOM FLOOR PLAN

NOTE 1: LIGHTING TO BE ZONED (PER CEILING PLAN) ON 3-WAY SWITCHES AND DIMMERS AT CLASSROOM ENTRY DOOR AND TEACHING WALL

NOTE 2: (14) TYPICAL K-6 CLASSROOMS, LOCATED ON LEVEL 1; (13) TYPICAL 7-12 CLASSROOMS, LOCATED ON LEVEL 2

NOTE 3: FURNITURE SHOWN FOR REFERENCE ONLY.



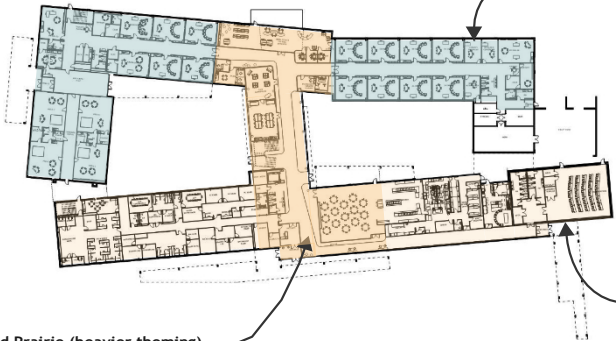






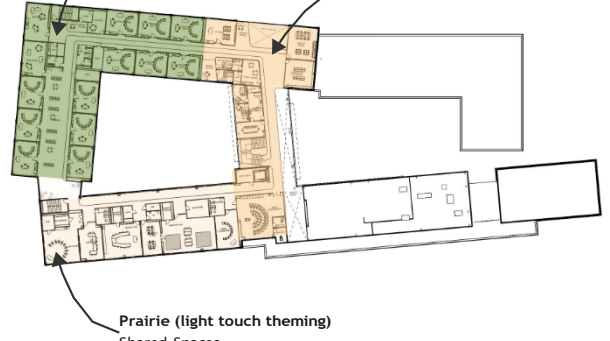
Prairie Concept

Cassatot River Lower School



Ouachita Mountain Upper School

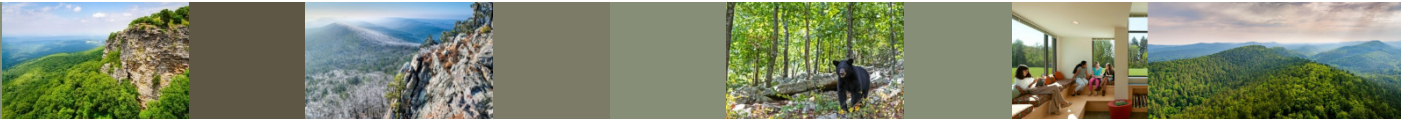
Grand Prairie (heavier theming) Spine and Media Center



Prairie (light touch theming) Shared Spaces

Grand Prairie (heavier theming) Spine, Dining and Media Center

OUACHITA MOUNTAIN
moments of inspiration are provided to students as they look to the future, they are at the peak of their experience and recognize their role as mentors.



CASSATOT RIVER
a free flowing yet directed experience for lower school students, a continuous theme guides students to find their way with exciting moments of adventure.



GRAND PRAIRIE
inspired by the grand prairie, an open, flexible, and expansive environment, a "journey through nature", balancing openness and intimacy.

