



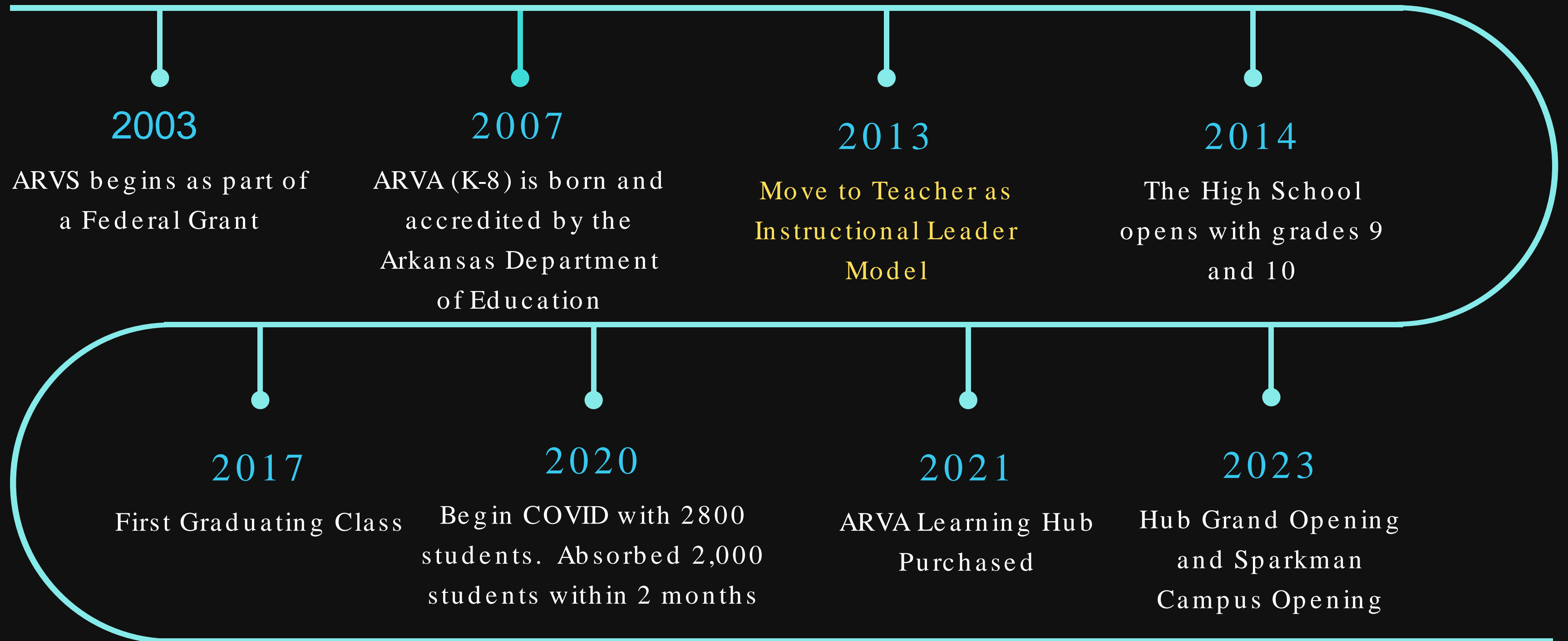
Navigating the Path to Sustainable
Success

Arkansas Virtual Academy

...WHERE EVERY STUDENT CAN ACHIEVE

From Arkansas Virtual School To Present

Understanding our Evolution



2027 VISION

BUILD **SUSTAINABLE**
ACADEMIC GROWTH WHILE
CONTINUING TO DELIVER
MEANINGFUL VALUE AND
COMMUNITY TO OUR
STUDENTS AND FAMILIES

Elementary: 2024 -C, 2025 -F
Middle School: 2024 -B, 2025 -D
High School: 2024 -C, 2025 -C

KEY QUESTIONS

HOW ARE WE IMPROVING ACADEMICALLY?

What levers are we implementing to assure long-term sustainable systems for growth for ARVA students?

WHAT FOCUSED CHANGES ARE BEING MADE?

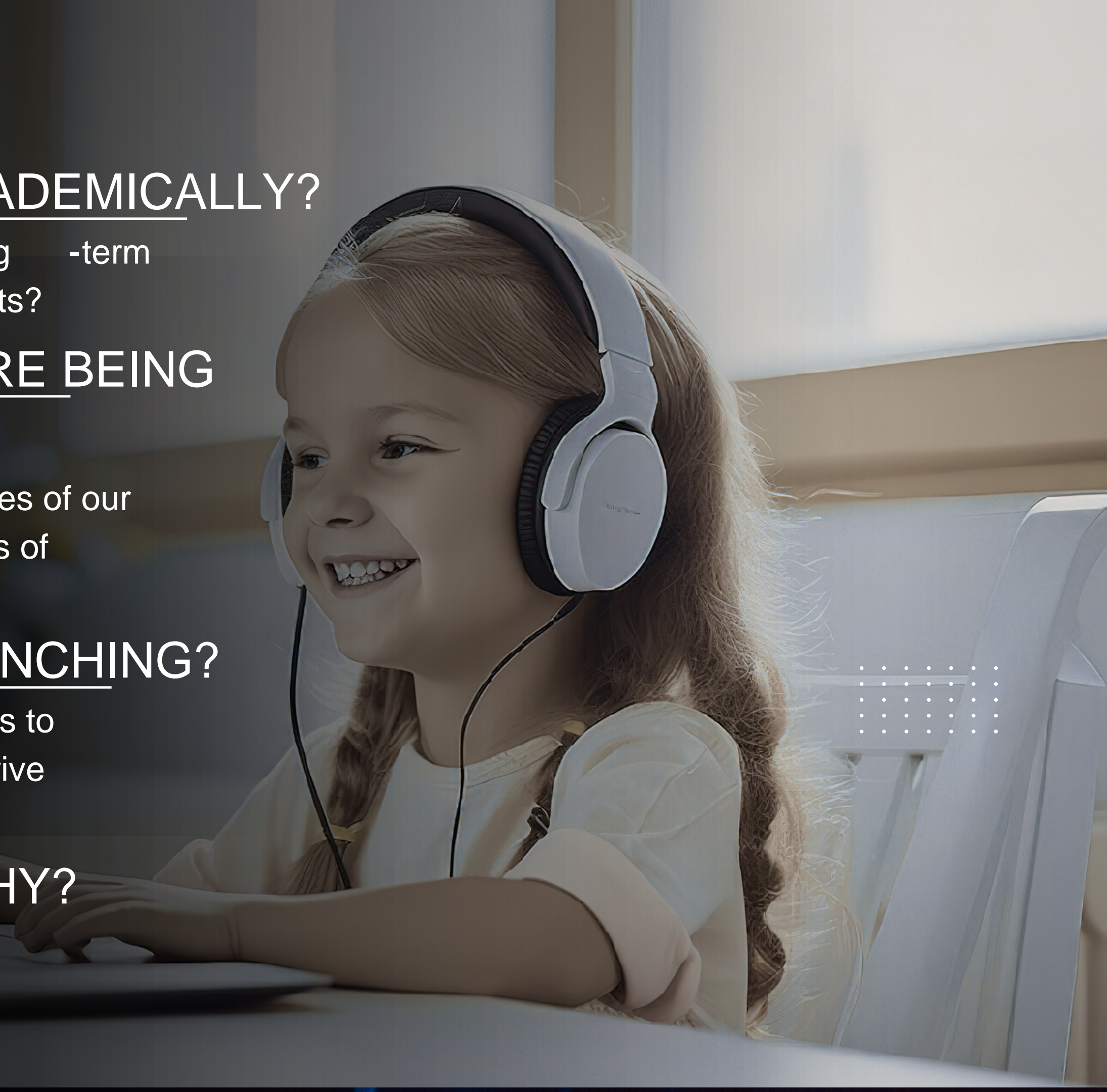
How are we creatively working within the confines of our modality to address the symptomatic pain points of virtual education?

WHAT INNOVATIONS ARE LAUNCHING?

What are we doing to continue to be contributors to Arkansas's educational landscape in order to drive innovation and improvement?

WHO CHOOSES ARVA AND WHY?

Why do families choose us and who are they?



High Five GOALS



1

Increase ELA, Math, and Science Achievement by a minimum of 5% points



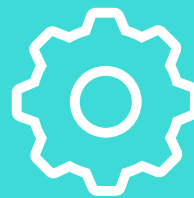
2

Increase ELA, Math, and Science Growth by a minimum of 5% points



3

Increase ELA, Math, and Science Bottom Quartile Growth by a minimum of 5% points



4

Increase Graduation Rate by a minimum of 5% points



5

Increase Merit Scholars by a minimum of 5% points

KEY ACADEMIC PILLARS

Targeted & Aligned Instruction

- Courses aligned to Arkansas High Priority Standards and Achievement Level Descriptors
- Live Tier I instruction with targeted Tier II/III interventions by trained specialists
- District-wide writing initiative to strengthen student outcomes
- Grade-level promotion non-negotiables with mastery tracking

Increasing Student Engagement

- "7 Weeks to Shine" launches the year with a focus on attendance, assignment completion, and mastery
- Students remain on camera and are re-engaged when inactive
- New attendance team monitors no log-ins and missed live sessions with specific actions
- Weekly monitoring of skill reinforcement platforms for completion and mastery

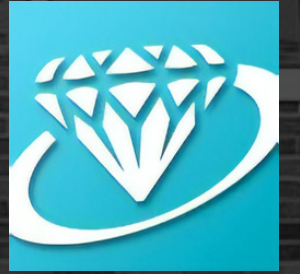
Embracing Mobility

- ARVA maintains an average 70% Full Academic Year student population at summative assessment
- Of those students, 38% were new to ARVA this year, including 42% at the elementary level
- FAY classrooms allow teachers to focus on instruction while dedicated in-year teachers support onboarding transitions

Monitoring & Goal Setting

- Students are trained and receive the SHINE Learning Dispositions as part of their culture
- Teachers and students set cut score goals each nine weeks
- Weekly growth-to-goal tracking keeps progress visible and actionable with every single student tracking
- Instructional coaches develop teachers while teachers develop students

Continued Innovation



THE HUB

Hybrid facility to provide teacher training, student labs, and student activities



EARLE VIRTUAL ACADEMY

Partnership to provide curriculum and instruction to a high-need school



SPARKMAN CAMPUS

Face-to-face hybrid campus to serve a rural, high need area



CAREER AND COLLEGE ADVANCEMENT

Student organizations with state and national awards, certifications, internships, work-based learning, and job-ready H2 pathways. Student degrees and diplomas



VISIBLE LEARNING ASSOCIATE AWARD SCHOOLS

First Virtual District in the world to be awarded and presenting at National Conference

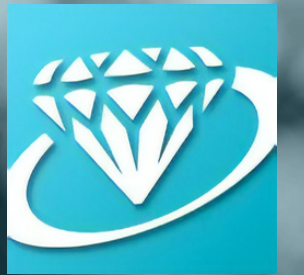
ARKANSAS VIRTUAL ACADEMY

717 W. 7th Street



Value of the

ARVA families say...



RACHEL MERCER (ELEMENTARY PARENT)

She is always counting down the minutes until her live classes. The teachers excite her and keep her fully engaged. She completes her schoolwork without issues, and **I'm surprised daily by how much she retains.** This school is a miracle. The material is also amazing! **Oh, to see every skin color, multiple cultures and ways of life highlighted this year is so heartwarming to me.** That is love, and that is the most important part of growing as a human being. 10/10 on that. Don't stop being amazing people, please.

CARRIE LYNN MITCHELL (SENIOR PARENT)

Thank you for the wonderful experience that all of you at ARVA have given us for the past 8 years. We will be forever grateful to all of you. **ARVA is truly a caring and family-friendly community.** Four years ago, I was involved in a horrible car accident that required me to have a total of 11 complicated surgeries, which required extensive recovery. **I can't brag enough about how much everyone at ARVA stepped up and helped Ethan.** The whole experience has been a blessing.

AMBER WÆLS (PARENT)

I have 3 children attending and I am a work from home mom and the type of education they receive is really important to my husband and I. **ARVA's curriculum allows our children to be challenged, disciplined, and provides individual learning opportunities that apply specifically to them as education is not one size fits all.** Communication is also a major factor in making a decision where a child attends school and you guys do such an amazing job!

CARLA BRAINARD (SENIOR PARENT)

My son, Brannon, is a Junior this year and of course a Senior next year. **ARVA is vital to his life.** It affords him time to work in the afternoons, which is wonderful for him while dealing with autism which affects him socially. **He has so much confidence and has never been labeled due to his learning disabilities.**

THE POWER OF COMMUNITY



Focused on what is right for students.