



**On-Site Solar for ISD 881
Maple Lake Public School District
2026 Solar for Schools Grants**

6/5/2026

About iDEAL Energies

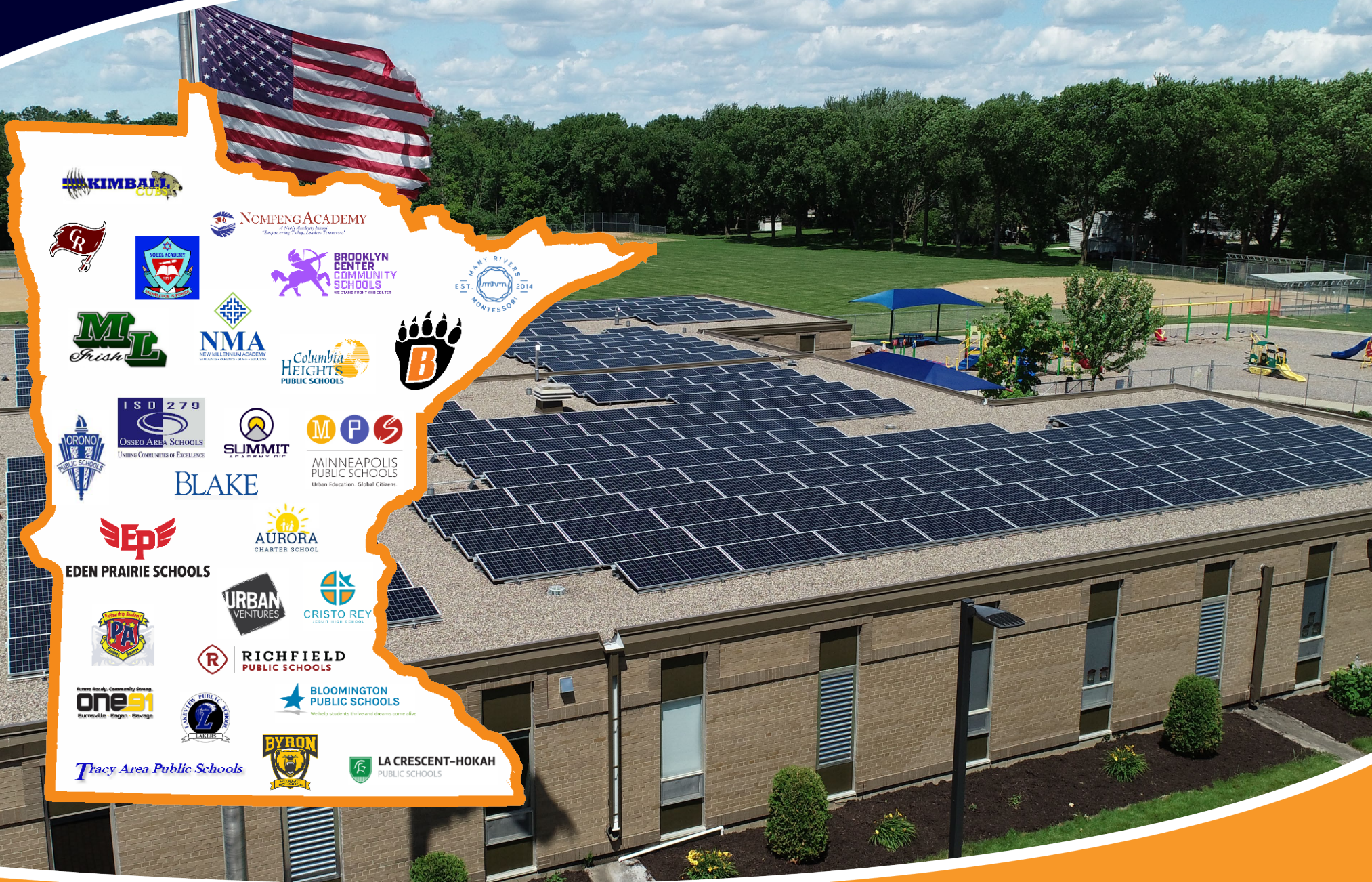
Ideal Energies is the premier Minneapolis-based commercial solar energy developer with 600+ commercial systems currently in operation and 600+ projects under construction.

Ideal has installed ~200 solar arrays at 60+ MN School Districts

Ideal has installed ~90 Solar Projects using the Solar for Schools Program

Our seamless vertical integration allows us to develop, design, install, finance, and operate turn-key solar energy systems across multiple sectors including commercial for-profit businesses, non-profits, cities, counties, schools, and non-profits.

Ideal's affiliated companies provide development, financing, project management, construction, operation and maintenance.



KIMBALL
CUBS



NOMPENG ACADEMY
"Engineering. Policy. Leadership."



NMA
NEW MILLENNIUM ACADEMY



ISD 279
OSSEO AREA SCHOOLS



BLAKE

MINNEAPOLIS PUBLIC SCHOOLS
Urban Education. Global Citizens.



EDEN PRAIRIE SCHOOLS



AURORA
CHARTER SCHOOL



CRISTO REY
JESU Y HIGH SCHOOLS



RICHFIELD PUBLIC SCHOOLS



one91
Burnsville Eagan Savage



BLOOMINGTON PUBLIC SCHOOLS
We help students thrive and dreams come alive.

Tracy Area Public Schools



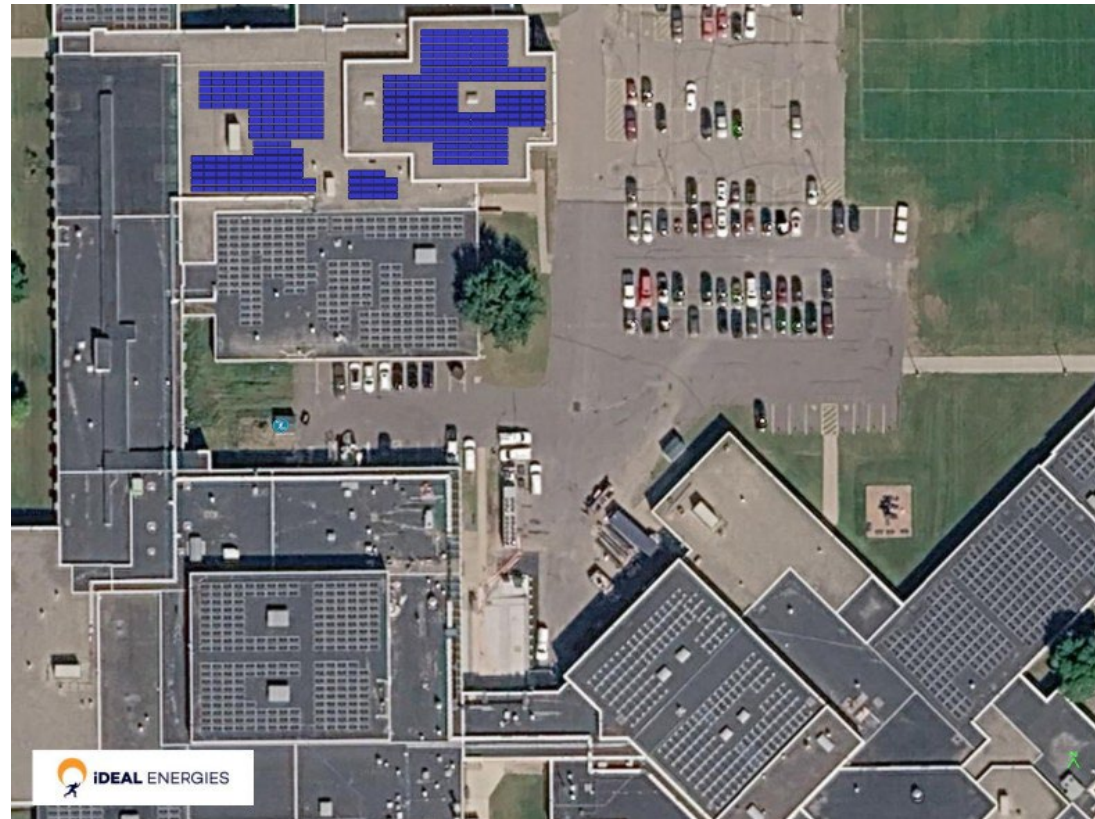
LA CRESCENT-HOKAH PUBLIC SCHOOLS

Our School Customers

ISD 881 - Maple Lake Public School District
ISD 840 - St. James Public School District
ISD 834 - Stillwater Area Public Schools
ISD 818 - Verndale Public School District
ISD 704 - Proctor Public School District
ISD 698 - Floodwood Public School District
ISD 623 - Roseville Public School District
ISD 535 - Rochester Public School District
ISD 497 - Lyle Public School
ISD 345 - New London-Spicer School District
ISD 300 - La Crescent-Hokah School District
ISD 2904 - Tracy Area Public School District
Intermediate School District 287
ISD 2835 - Janesville-Waldorf-Pemberton
ISD 279 - Osseo Area School District
ISD 272 - Eden Prairie Public School District
ISD 271 - Bloomington Public School District
ISD 2167 - Lakeview School District
ISD 2071 - Lake Crystal-Wellcome Memorial
ISD 196 - Rosemount-Eagan-Apple Valley
ISD 191 - Burnsville Public School District
ISD 14 - Fridley Public School District
ISD 12 - Centennial Public School District
ISD 306 - Laporte Public School
ISD 2909 - Rock Ridge Public School District
ISD 786 - Bertha-Hewitt Public School District

ISD 879 - Delano Public School District
ISD 84 - Sleepy Eye Public School District
ISD 821 - Menahga Public School District
ISD 739 - Kimball Public School District
ISD 700 - Hermantown Public School District
ISD 624 - White Bear Lake School District
ISD 553 - New York Mills Public School District
ISD 531 - Byron Public School District
ISD 391 - Cleveland Public School District
ISD 332 - Mora Public School District
ISD 2905 - Tri-City United School District
ISD 2899 - Plainview-Elgin-Millville School District
ISD 286 - Brooklyn Center School District
ISD 280 - Richfield Public School District
ISD 278 - Orono Public School District
ISD 2711 - Mesabi East School District
ISD 241 - Albert Lea Public School District
ISD 2165 - Hinckley-Finlayson School District
ISD 2 - Hill City Public School District
ISD 194 - Lakeville Area Schools
ISD 152 - Moorhead Area Public Schools
ISD 13 - Columbia Heights Public School District
ISD 108 - Central Public School District
ISD 622 - North St. Paul-Maplewood-Oakdale Public School District
ISD 200 - Hastings Public School District
ISD 347 - Willmar Public School District

Existing 677.52 kWDC
Proposed 176.73 kWDC



Solar for Schools Program Metrics and System Cost Summary

School Type or Eligibility Category	Estimated Grant %
ANTC/APU > \$9,250	70%

Grant payments are paid based on the following tables provided in the SFS RFP documents.

System Size (kWDC)	Department Cost Basis (\$/WDC)	90% Grant	80% Grant	70% Grant
> 125 & ≤ 625	\$2.20	\$1.98	\$1.76	\$1.54

Project Cost Summary

Solar Array Cost:	\$407,215
Solar for Schools Grant:	(\$244,329)
Federal Direct Payment:	<u>(\$162,886)</u>
Net Cost:	\$0

Applying for a Solar for Schools Grant

- Ideal applied for the Grant on behalf of the District - Round 9 - Solar for Schools Program
- Readiness Application – Submitted on March 2, 2026
- Preliminary Readiness Application Grant Approval – Notification Due April 3, 2026 (pending)
- Complete Electrical and Structural Engineering – In progress
- Full Grant Application – Due July 2, 2026
- The SFS Requirements for Schools that participate in the SFS Program
 - An education curriculum
 - Live solar energy monitoring is available in a public place

Note: Ideal Energies currently provides an education curriculum & free web based solar array monitoring to all its School Customers

Ideal's Solar Program

1. District owns the solar array and 100% of it paid for by the Solar for Schools Program Grant (60% of the cost) and the Direct Pay Tax Credit (40% of the cost)
2. Ideal will help the District apply to the IRS for a Tax Credit Registration Number, required to apply for and receive payment for the Direct Pay Tax Credit
3. Solar panels have a 30-year warranty
4. Ideal will provide operations and maintenance for years 1-5 to optimize performance and maximize energy production

Annual Utility Savings Summary

Year	Electricity Produced (kWh/year)	Energy Expense Reduction / PV Rider Utility Bill Credit		Total Savings	
		Energy Expense Savings (\$/year)	PV Rider Utility Bill Credit (\$/year)	Annual Savings (\$)	Cumulative Annual Savings (\$)
1	198,821	\$ 15,267	\$ 6,486	\$ 21,753	\$ 21,753
2	194,845	\$ 15,560	\$ 6,610	\$ 22,170	\$ 43,923
3	194,260	\$ 16,134	\$ 6,854	\$ 22,988	\$ 66,911
4	193,677	\$ 16,729	\$ 7,107	\$ 23,836	\$ 90,746
5	193,096	\$ 17,346	\$ 7,369	\$ 24,715	\$ 115,461
10	190,217	\$ 20,789	\$ 8,831	\$ 29,621	\$ 253,398
15	187,380	\$ 24,916	\$ 10,585	\$ 35,501	\$ 418,717
20	184,587	\$ 29,863	\$ 12,686	\$ 42,548	\$ 616,854
25	181,835	\$ 35,791	\$ 15,204	\$ 50,995	\$ 854,323
30	179,123	\$ 42,896	\$ 18,222	\$ 61,118	\$ 1,138,933
35	176,452	\$ 51,411	\$ 21,839	\$ 73,250	\$ 1,480,042
40	173,821	\$ 61,616	\$ 26,175	\$ 87,791	\$ 1,888,863

System Purchase and Incentives

Operating & Purchase Expense

Period	System Payment	Solar for Schools Grant	IRS Direct Payment	Line of Credit Draw (Paydown)	Total Cumulative Financing	Interest Expense*	Total Cumulative Cashflow
May-26	\$ -	\$ -	\$ -	\$ -	\$ -	\$ -	\$ -
Jun-26	\$ (24,433)	\$ -	\$ -	\$ 24,433	\$ 24,433	\$ (143)	\$ (143)
Jul-26	\$ -	\$ -	\$ -	\$ -	\$ 24,433	\$ (143)	\$ (285)
Aug-26	\$ -	\$ 24,433	\$ -	\$ (24,433)	\$ -	\$ -	\$ (285)
Sep-26	\$ -	\$ -	\$ -	\$ -	\$ -	\$ -	\$ (285)
Oct-26	\$ (179,175)	\$ -	\$ -	\$ 179,175	\$ 179,175	\$ (1,045)	\$ (1,330)
Nov-26	\$ -	\$ 179,175	\$ -	\$ (179,175)	\$ -	\$ -	\$ (1,330)
Dec-26	\$ -	\$ -	\$ -	\$ -	\$ -	\$ -	\$ (1,330)
Jan-27	\$ -	\$ -	\$ -	\$ -	\$ -	\$ -	\$ (1,330)
Feb-27	\$ -	\$ -	\$ -	\$ -	\$ -	\$ -	\$ (1,330)
Mar-27	\$ -	\$ -	\$ -	\$ -	\$ -	\$ -	\$ (1,330)
Apr-27	\$ -	\$ -	\$ -	\$ -	\$ -	\$ -	\$ (1,330)
May-27	\$ -	\$ -	\$ -	\$ -	\$ -	\$ -	\$ (1,330)
Jun-27	\$ (81,443)	\$ -	\$ -	\$ 81,443	\$ 81,443	\$ (475)	\$ (1,805)
Jul-27	\$ -	\$ 16,289	\$ -	\$ (16,289)	\$ 65,154	\$ (380)	\$ (2,185)
Aug-27	\$ -	\$ -	\$ -	\$ -	\$ 65,154	\$ (380)	\$ (2,565)
Sep-27	\$ -	\$ -	\$ -	\$ -	\$ 65,154	\$ (380)	\$ (2,946)
Oct - 27 - Startup	\$ (81,443)	\$ -	\$ -	\$ 81,443	\$ 146,597	\$ (855)	\$ (3,801)
Nov-27	\$ (40,722)	\$ -	\$ -	\$ 40,722	\$ 187,319	\$ (1,093)	\$ (4,893)
Dec-27	\$ -	\$ 24,433	\$ -	\$ (24,433)	\$ 162,886	\$ (950)	\$ (5,844)
Sep - 28 - Direct Pay Receipt	\$ -	\$ -	\$ 162,886	\$ (162,886)	\$ -	\$ (8,552)	\$ (14,395)
TOTAL	\$ (407,215)	\$ 244,329	\$ 162,886	\$ -	\$ -	\$ (14,395)	

* Interest rate assumed at 7%

System Purchase and Incentives
Operating & Purchase Expense
Utility Bill Savings
Annual Summary

Year	System Purchase and Incentives					Operating & Purchase Expense					Utility Bill Savings	Annual Summary	
	System Payment	Solar for Schools Grant	IRS Direct Payment	Line of Credit Draw (Paydown)	Total	Interest Expense*	5 Year PPA and O&M Services	Maintenance Expense & Inverter Replacement	Insurance Expense and Utility Fees	Total	Total	Total Cashflow	Total Cumulative Cashflow
Year 0	\$ (407,215)	\$ 244,329	\$ -	\$ 162,886	\$ -	\$ (5,844)	\$ -	\$ -	\$ -	\$ (5,844)	\$ -	\$ (5,844)	\$ (5,844)
Year 1	\$ -	\$ -	\$ 162,886	\$ (162,886)	\$ -	\$ (8,552)	\$ (1,767)	\$ -	\$ (500)	\$ (10,819)	\$ 21,753	\$ 10,934	\$ 5,090
Year 2	\$ -	\$ -	\$ -	\$ -	\$ -	\$ -	\$ (1,767)	\$ -	\$ (510)	\$ (2,277)	\$ 22,170	\$ 19,893	\$ 24,983
Year 3	\$ -	\$ -	\$ -	\$ -	\$ -	\$ -	\$ (1,767)	\$ -	\$ (520)	\$ (2,288)	\$ 22,988	\$ 20,700	\$ 45,684
Year 4	\$ -	\$ -	\$ -	\$ -	\$ -	\$ -	\$ (1,767)	\$ -	\$ (531)	\$ (2,298)	\$ 23,836	\$ 21,538	\$ 67,221
Year 5	\$ -	\$ -	\$ -	\$ -	\$ -	\$ -	\$ (1,767)	\$ -	\$ (541)	\$ (2,309)	\$ 24,715	\$ 22,406	\$ 89,628
Year 6	\$ -	\$ -	\$ -	\$ -	\$ -	\$ -	\$ -	\$ (1,829)	\$ (552)	\$ (2,381)	\$ 25,626	\$ 23,245	\$ 112,873
Year 7	\$ -	\$ -	\$ -	\$ -	\$ -	\$ -	\$ -	\$ (1,893)	\$ (563)	\$ (2,456)	\$ 26,571	\$ 24,115	\$ 136,988
Year 8	\$ -	\$ -	\$ -	\$ -	\$ -	\$ -	\$ -	\$ (1,959)	\$ (574)	\$ (2,534)	\$ 27,551	\$ 25,017	\$ 162,005
Year 9	\$ -	\$ -	\$ -	\$ -	\$ -	\$ -	\$ -	\$ (2,028)	\$ (586)	\$ (2,614)	\$ 28,567	\$ 25,953	\$ 187,959
Year 10	\$ -	\$ -	\$ -	\$ -	\$ -	\$ -	\$ -	\$ (2,099)	\$ (597)	\$ (2,696)	\$ 29,621	\$ 26,924	\$ 214,883
Year 11	\$ -	\$ -	\$ -	\$ -	\$ -	\$ -	\$ -	\$ (2,172)	\$ (609)	\$ (2,782)	\$ 30,713	\$ 27,931	\$ 242,814
Year 12	\$ -	\$ -	\$ -	\$ -	\$ -	\$ -	\$ -	\$ (2,248)	\$ (622)	\$ (2,870)	\$ 31,846	\$ 28,976	\$ 271,790
Year 13	\$ -	\$ -	\$ -	\$ -	\$ -	\$ -	\$ -	\$ (12,609)	\$ (634)	\$ (13,243)	\$ 33,020	\$ 19,777	\$ 291,568
Year 25	\$ -	\$ -	\$ -	\$ -	\$ -	\$ -	\$ -	\$ (19,053)	\$ (804)	\$ (19,857)	\$ 50,995	\$ 31,138	\$ 737,532
Year 26	\$ -	\$ -	\$ -	\$ -	\$ -	\$ -	\$ -	\$ (3,640)	\$ (820)	\$ (4,460)	\$ 52,875	\$ 48,416	\$ 785,948
Year 27	\$ -	\$ -	\$ -	\$ -	\$ -	\$ -	\$ -	\$ (3,767)	\$ (837)	\$ (4,604)	\$ 54,825	\$ 50,222	\$ 836,170
Year 28	\$ -	\$ -	\$ -	\$ -	\$ -	\$ -	\$ -	\$ (3,899)	\$ (853)	\$ (4,752)	\$ 56,847	\$ 52,095	\$ 888,265
Year 29	\$ -	\$ -	\$ -	\$ -	\$ -	\$ -	\$ -	\$ (4,035)	\$ (870)	\$ (4,906)	\$ 58,944	\$ 54,038	\$ 942,303
Year 30	\$ -	\$ -	\$ -	\$ -	\$ -	\$ -	\$ -	\$ (4,177)	\$ (888)	\$ (5,064)	\$ 61,118	\$ 56,053	\$ 998,356
Year 31	\$ -	\$ -	\$ -	\$ -	\$ -	\$ -	\$ -	\$ (4,323)	\$ (906)	\$ (5,228)	\$ 63,372	\$ 58,144	\$ 1,056,500
Year 37	\$ -	\$ -	\$ -	\$ -	\$ -	\$ -	\$ -	\$ (28,790)	\$ (1,020)	\$ (29,810)	\$ 78,753	\$ 48,943	\$ 1,430,333
Year 38	\$ -	\$ -	\$ -	\$ -	\$ -	\$ -	\$ -	\$ (5,500)	\$ (1,040)	\$ (6,540)	\$ 81,657	\$ 75,117	\$ 1,505,450
Year 39	\$ -	\$ -	\$ -	\$ -	\$ -	\$ -	\$ -	\$ (5,692)	\$ (1,061)	\$ (6,753)	\$ 84,669	\$ 77,916	\$ 1,583,366
Year 40	\$ -	\$ -	\$ -	\$ -	\$ -	\$ -	\$ -	\$ (5,891)	\$ (1,082)	\$ (6,974)	\$ 87,791	\$ 80,818	\$ 1,664,183
TOTAL	\$ (407,215)	\$ 244,329	\$ 162,886	\$ -	\$ -	\$ (14,395)	\$ (8,837)	\$ (171,252)	\$ (30,196)	\$ (224,680)	\$ 1,888,863		

* Interest rate assumed at 7%

Ideal's Solar Curriculum for Students

Ideal provides all its school customers a science-based Solar Energy Education Curriculum that engages students in the real work of STEM professionals to help develop their understanding of solar energy, STEM careers, teamwork, design, and real-world issues for years.

Ideal's Education Curriculum is aligned with future Minnesota State Standards, Next Generation Science Standards, and 21st Century Learning Frameworks.

GOOD NEWS!

Ideal's education team is ready to assist your District with implementing the Curriculum!

Current Power 85.79 kW	Energy today 976.98 kWh	Energy this month 37.86 MWh	Lifetime energy 155.67 MWh
----------------------------------	-----------------------------------	---------------------------------------	--------------------------------------



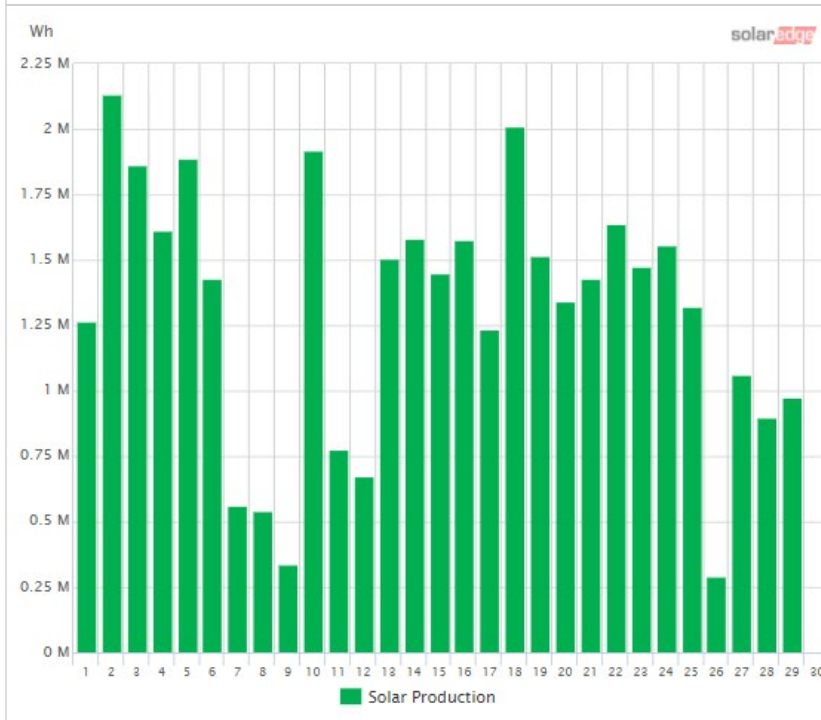
Power and Energy

Day Week **Month** Billing Cycle Year




09/01/2020 - 09/30/2020

System Production: **37.86 MWh**

Site Status	✔
ID	1576743
Name	
Address	
Installed	04/13/2020
Last Updated	09/29/2020 15:54
Peak Power	300 kWp



Cloudy
60 °F
Feels like 60 °F
Wind SSE, 7 MPH
Humidity 60 %
Sunrise at 07:10
Sunset at 18:57

Tuesday  61 - 48 °F Mostly Cloudy	Wednesday  57 - 45 °F 30% Chance of Rain	Thursday  48 - 36 °F Mostly Cloudy
--	--	--

Environmental Benefits

 CO2 Emission Saved
241,041.77 lb

 Equivalent Trees Planted
1,821.29

Monitor your solar array's performance and demonstrate your District's sustainability goals with web-based monitoring tools.

Utilize each school's real time web-based monitoring in the classroom as part of its solar curriculum.

GOOD NEWS!

Our monitoring solution already meets the requirements of the Solar for Schools program.

Next Steps...

Approval to Proceed

- Approval for iDEAL to complete the remaining work required to submit the Full Grant Application – Due July 2, 2026
- Complete preliminary electrical and structural engineering for the solar array
- Approval to negotiate the solar agreements
- Final approval by June 22nd (Public notice & meeting)

Next Steps

Solar Array Interconnection Approval

- Complete electrical and structural engineering for the solar array
- Apply for and receive interconnection approval from Xcel Energy

Solar Array Construction and Startup

- Construct and energize the solar array based on construction timing (2027)

**GET IN
TOUCH!**

© 2023 iDEAL ENERGIES
8318 Pillsbury Ave, Bloomington, MN
P 612.928.5008

iDEALenergies.COM



Supplemental information documenting assumptions in this presentation are available upon request

Make Money. Save the Planet.™