

# AGB

ADVANCING BOARD EXCELLENCE

## AGB MEMBERSHIP



### WHO WE ARE

The Association of Governing Boards of Universities and Colleges (AGB) believes in the power of higher education to transform lives, strengthen inclusive democracy, and support a thriving society. We believe that strong higher education starts with great governing boards. For more than 100 years, AGB has been the trusted authority for board members, chief executives, board professionals, and key administrators on higher education governance and leadership.

AGB provides advocacy, leading practices, educational resources, expert support, and renowned programs that advance board excellence.

### AGB AT A GLANCE

2,000

institutions, systems,  
and foundations

40,000

board members

10 million

students overseen (FTE)



### RESOURCES

*for answers to your questions*

**AGB Board Bot™:** A 24/7 chatbot providing instant answers to your governance questions based solely on AGB's trusted content

**AGB Knowledge Center:** Online insights and guidance on trending topics and board fundamentals, with resources curated by board role, organization type, and committee

**Trusteeship Magazine:** Bimonthly print edition of our award-winning publication, with online archive access

**Governance Tools and Toolkits:** Practical guidance on higher education governance

**AGB Reports and Statements:** AGB's current position, analysis, and recommendations on critical topics

**E-Books:** No additional cost for digital versions of all AGB publications

**Personalized Home Page:** Resources curated for your role and institution

**Preferred Member Pricing:** Savings on AGB printed books



### PROGRAMS

*for continuing education*

**Online Board Member Orientation:** Self-paced online program for new or seasoned higher education board members

**Webinars:** Live and recorded presentations on trending topics

**Board Professional Certificate Program™:** Self-paced online program covering board professional fundamentals and impact strategies

**Board Professional Community:** Online network for connecting, asking questions, and sharing best practices

**AGB Institutes:** Curated small-group sessions exclusively for the board chair-president team that are focused on facilitated learning and action planning (Additional fee)

**Preferred Member Pricing:** Significant savings on the National Conference on Trusteeship, the Board Professionals Conference, and the Foundation Leadership Forum



### SERVICES

*for expert guidance*

**One-Hour Governance Consultation:** Discussion with an AGB expert for general advice on achieving board goals or navigating difficult governance situations (one consultation per year)

**AGB Concierge Services:** Quick, personalized help with governance questions and resources

**Board Performance Survey:** Standardized online assessment of board effectiveness and areas for improvement (one survey per year)

**AGB Consulting:** Expert staff ready to help you tackle the governance and strategy challenges of your institution, system, or foundation

**Preferred Member Pricing:** Savings on AGB OnBoard board meeting management portal and AGB Search executive recruitment

### LEARN MORE

[AGB.org/Membership](https://www.agb.org/Membership)

membership@AGB.org • 800-356-6317

Annual membership fees start at \$2,500.

*Final fees will depend on your enrollment (FTE), organization type, or assets under management.*



ADVANCING BOARD EXCELLENCE

# Membership 2025–2026 Dues Schedule

## INSTITUTIONAL AND SYSTEM GOVERNING BOARDS

### Enrollment (FTE)

Up to 500	\$3,890
501–1,000	\$4,430
1,001–1,500	\$5,045
1,501–2,500	\$5,835
2,501–5,000	\$6,725

### Enrollment (FTE)

5,001–15,000	\$8,950
15,001–25,000	\$11,355
25,001–40,000	\$13,670
40,001–70,000	\$15,820
More than 70,000	\$16,100

Annual dues for institutional governing boards are based on total enrollment figures for the most recent fall term (full-time equivalent degree-credit students) as reported annually by the U.S. Department of Education. FTE equals one-third the number of part-time students plus the total number of full-time students (graduate and undergraduate).

### Other Categories

International Institutions, Two-Year Institutions, Campus Advisory Boards, Statewide Coordinating Boards, Theological Institutions and Seminaries, K–12	\$4,360
---	---------

## INSTITUTIONALLY RELATED FOUNDATION BOARDS

### Assets Managed

Up to \$10,000,000	\$2,500
\$10,000,001–\$25,000,000	\$3,330
\$25,000,001–\$100,000,000	\$3,790
\$100,000,001–\$250,000,000	\$4,520

### Assets Managed

\$250,000,001–\$500,000,000	\$5,390
\$500,000,001–\$1,000,000,000	\$5,540
\$1,000,000,001 or more	\$5,650

Annual dues for institutionally related foundation boards are based on assets under management at the end of the foundation's previous fiscal year.

Join AGB Today → [AGB.org/Membership](https://AGB.org/Membership)  
membership@AGB.org • 800-356-6317



President/CEO



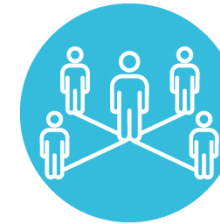
Board Chair



Board Member



Board Professional



Senior Administrator