
ANNUAL REPORT 2025



Northeast Arkansas Education Cooperative
211 West Hickory
Walnut Ridge Arkansas, 72476



Report Prepared
May, 2025

TABLE OF CONTENTS

From the Director’s Desk	3
Mission Statement	4
Northeast Arkansas Education Cooperative’s “Why” and “How”	5
Northeast Arkansas Education Cooperative Map	6
Northeast Arkansas Education Cooperative Organizational Chart	7
Northeast Arkansas Education Cooperative Board of Directors	8
ESC Annual Report	9
Governance.....	10
Staffing	11
Northeast Teacher Center.....	14
Administrative Services	14
Direct Services to Students.....	15
Anecdotal Reports	15
Employment Policies and Practices	16
Northeast Arkansas Education Cooperative Salary Schedules	18
Northeast Arkansas Education Cooperative Teacher Center Committee	21
Program Summaries	22
Arkansas Better Chance Preschool	23
ArPEP.....	25
APSCN.....	28
Behavior Support Specialist.....	29
Career and Technical Education	33
Computer Science Education	35
Digital Learning	39
Early Childhood Special Education	43
English Speakers of Other Languages (ESOL).....	44
ESCWorks.....	46
Gifted Education	48
HIPPI	50
Literacy Department.....	52
Math Department.....	54
Recruitment and Retention.....	56
Principals Quarterly Meetings.....	58
School Psychology Specialist.....	59
School Health Services.....	60
Science Department.....	61
Special Education.....	65
Teacher Center – Make-n-Take.....	66
Teacher Center – Professional Development, Curriculum Development Assistant	67
Technology.....	68
Special Projects	69
Professional Development Activities Report	74

Northeast Arkansas Education Cooperative

211 West Hickory ~ Walnut Ridge, AR 72476

Phone: 870-886-7717

Fax: 870-886-7719

Daryl Blaxton
Director

Website: <http://nea.k12.ar.us>

Sandra Lamberson
Teacher Center Coordinator

Serving Since 1984

LEAs Include:

Clay County

Corning
Piggott
Rector

Craighead County

Westside Consolidated

Greene County

Greene County Tech
Marmaduke
Paragould

Jackson County

Jackson County

Lawrence County

Hillcrest
Hoxie
Lawrence County
Sloan Hendrix

Randolph County

Maynard
Pocahontas

Other Departments:

Early Childhood

1-870-886-3212

Make- N-Take

1-870-886-7559



*“To empower
and inspire
others, so that
they achieve
their greatest
potential”*

To: Arkansas Educators
From: Daryl Blaxton, Director
Subject: 2024-2025 Annual Report

As Director of the Northeast Arkansas Education Service Cooperative, I am pleased to present our Annual Report. This year, we achieved significant milestones in advancing education across our fourteen-member districts. Our primary focus areas have been; 1) Supporting our member school districts in Year II of the implementation of the LEARNS Act, 2) Expanding our early literacy readiness efforts in our early childhood programs, and 3) Supporting our districts in the transitions taking place in our state regarding Career and Technical Education pathways and opportunities. I sincerely thank our educators, staff, and supporters for their dedication and collaboration throughout the year.

The 2024-2025 annual report reflects information on the programs and grants conducted through the Co-op. NEAESC has 88 total employees. In addition, NEAESC houses three Arkansas Department of Elementary and Secondary Education (DESE) staff members, one Arkansas Department of Health (ADH) employee, and two Medicaid in the Schools staff members. The DESE Base Funding to the co-op is \$408,618. The total budgeted revenue for FY25 was \$5,505,691, and the total budgeted expenditures were \$5,952,654.

Listed below are examples of the programs and services offered:

- *Administration/Bookkeeping
- *Career and Technical Education (CTE)
- *Math Support Services
- *English Language Services
- *Early Childhood Special Education
- *Early Childhood HIPPPY Program
- *Make-n-Take Services
- *School Psychology Specialist Services
- *Technology/Digital Learning Services
- *Professional Development
- *Fingerprinting Services
- *School Medicaid Support
- *APSCN Field Specialists
- *Literacy Support Services
- *Science Support Services
- *Community/School Health Services
- *Early Childhood ABC Programs
- *Gifted and Talented Education
- *Special Education LEA Services
- *Behavior Support Specialist Services
- *Computer Science Education
- *Novice Teacher Training
- *Virtual Arkansas Courses

NEAESC staff members desire *to empower and inspire others to achieve their greatest potential*. This statement serves as our guide in providing high-quality and focused support.

As we conclude a successful 2024-2025 school year, we eagerly anticipate the new opportunities and possibilities the coming year holds. We are excited to continue our journey with you.

Daryl Blaxton
Director

Sandra Lamberson
TC Coordinator



Northeast Arkansas Education Services Cooperative

The Northeast Arkansas Education Cooperative's “Why”

To Empower and Inspire Others so that
They Achieve Their Greatest Potential

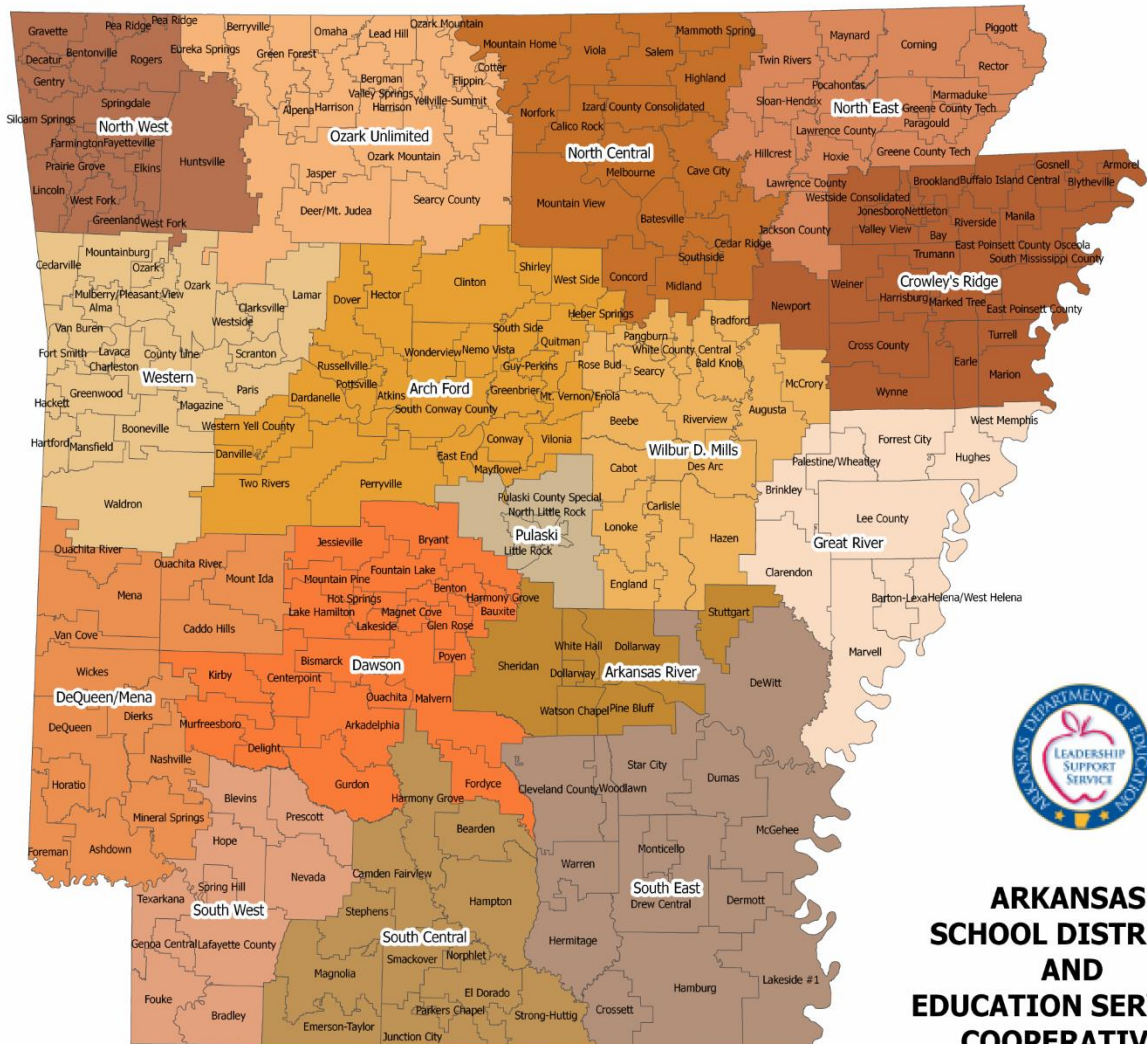
“How”

Establish on-going connections with
intentionality

Serve by providing training, resources and
support in a positive, safe environment

Challenge others to foster a growth mindset





**ARKANSAS
SCHOOL DISTRICTS
AND
EDUCATION SERVICES
COOPERATIVES**

The Northeast Arkansas Education Cooperative serves the following counties.

- Clay**
- Craighead**
- Greene**
- Jackson**
- Lawrence**
- Randolph**

NEAESC Impact on Student Performance

2024-2025

Program	Impact				
ABC PreK (Launchpad Data)	Component	BOY	EOY	% Growth	% of Possible
	Instructional Vocabulary	8.59	11.51	33.99%	95.92%
	Phonemic/Phonological Awareness	6.83	15.43	127.79%	77.15%
	Concepts of Print	3.53	4.88	38.24%	97.60%
	Upper Case Letter Identification	9.40	18.98	101.91%	73.00%
	Lower Case Letter Identification	6.33	16.98	168.25%	65.31%
	Sound Identification	3.32	16.14	386.14%	52.06%
	<i>**Average Scores for 164 students tested.</i>				
CTE	The 2024 Perkins CTE Consortium Data, which is based on students who are CTE concentrators, shows the following performance:				
		TARGET	NEAEC	STATE CTE PERFORMANCE	
	4-yr Graduation Rate	96.91	98.07	97.63	
	5-yr Graduation Rate	97	98.35	97.70	
	Reading/Lang Arts	65.39	62.45	66.12	
	Math	58.59	53.85	55.44	
	Science	66.31	63.40	67.23	
	Placement	82	74.24	72.72	
	Non-Traditional	41.07	32.74	38.38	
	Program Quality-Certifications	50.08	74.44	62.03	
The targets were raised this year by the federal Office of Career, Technical, and Adult Education (OCTAE) without the opportunity to negotiate, which was detrimental to our performance.					

Virtual Arkansas	Virtual Arkansas Students had a 92% Pass Rate. They earned 26,730 credits and 9,284 college concurrent credit hours. A total of 1,952 students were enrolled in computer science courses, and 2,007 students were enrolled in Advanced Placement courses.																																
Early Childhood/Special Education	<p>For the 2024-2025 school year, the percentage(s) of Northeast AR Education Cooperative Early Childhood Special Education Students who entered the program below age expectations in the outcome areas of Social-Emotional, Knowledge-and-Skills, and Appropriate Behaviors fell below the state target percentages for those substantially increasing their rate of growth before turning six or exiting the program.</p> <p>Summary 1: Substantial Growth</p> <table border="1" data-bbox="430 655 1513 936"> <thead> <tr> <th>Outcome</th> <th>State Target</th> <th>State Rate</th> <th>NEAEC Rate</th> </tr> </thead> <tbody> <tr> <td>Social-Emotional</td> <td>90.60%</td> <td>88.27%</td> <td>79.25%</td> </tr> <tr> <td>Knowledge & Skills</td> <td>91.42%</td> <td>87.94%</td> <td>77.78%</td> </tr> <tr> <td>Appropriate Behaviors</td> <td>91.17%</td> <td>89.18%</td> <td>83.93%</td> </tr> </tbody> </table> <p>However, the percentages of students functioning within age expectations for each outcome by the time they turned six or exited the program were significantly above the state targets in both the Social-Emotional and Appropriate Behavior categories. NEAEC students were slightly above the state average percentages but below the state target threshold in the Knowledge-and-Skills category.</p> <p>Summary 2: Meeting Age Expectations</p> <table border="1" data-bbox="430 1260 1513 1541"> <thead> <tr> <th>Outcome</th> <th>State Target</th> <th>State Rate</th> <th>NEAEC Rate</th> </tr> </thead> <tbody> <tr> <td>Social-Emotional</td> <td>67.76%</td> <td>62.18%</td> <td>77.05%</td> </tr> <tr> <td>Knowledge & Skills</td> <td>58.17%</td> <td>46.60%</td> <td>55.74%</td> </tr> <tr> <td>Appropriate Behaviors</td> <td>75.46%</td> <td>68.52%</td> <td>78.69%</td> </tr> </tbody> </table>	Outcome	State Target	State Rate	NEAEC Rate	Social-Emotional	90.60%	88.27%	79.25%	Knowledge & Skills	91.42%	87.94%	77.78%	Appropriate Behaviors	91.17%	89.18%	83.93%	Outcome	State Target	State Rate	NEAEC Rate	Social-Emotional	67.76%	62.18%	77.05%	Knowledge & Skills	58.17%	46.60%	55.74%	Appropriate Behaviors	75.46%	68.52%	78.69%
Outcome	State Target	State Rate	NEAEC Rate																														
Social-Emotional	90.60%	88.27%	79.25%																														
Knowledge & Skills	91.42%	87.94%	77.78%																														
Appropriate Behaviors	91.17%	89.18%	83.93%																														
Outcome	State Target	State Rate	NEAEC Rate																														
Social-Emotional	67.76%	62.18%	77.05%																														
Knowledge & Skills	58.17%	46.60%	55.74%																														
Appropriate Behaviors	75.46%	68.52%	78.69%																														
HIPPY	The NEAEC Home Instruction for Parents of Preschool Youngsters (HIPPY) program served 75 students across 70 families in the 2024-2025 school year. HIPPY empowers communities and families by actively supporting parents in preparing their children for success in school.																																
Math	During the 2024-2025 school year, the math specialist gathered data from 100% of districts on math HQIM usage, provided professional learning to 57% of districts who had not adopted HQIM on Building Pathways to HQIM, provided targeted support through																																

	<p>coaching and professional development to 6 schools on the implementation of HQIM, and trained 71% of administrators on the impact areas of the Math Leadership Walkthrough Tool.</p>
Science	<p>During the 2024-2025 school year, the science specialist gathered data from 100% of districts on science HQIM usage, provided professional learning to 88% of districts who had not adopted HQIM on Building Pathways to HQIM, provided targeted support through coaching and professional development to 4 schools on the implementation of HQIM, and trained 50% of administrators on the impact areas of the Science Leadership Walkthrough Tool.</p>
Mentoring/Novice	<p>The NEAEC Mentoring Program end-of-year survey for the 24-25 SY resulted in 93% of novice teachers planning to return to teaching. 99% of novice teachers surveyed reported receiving mentoring support. 96% also reported that the mentoring program helped them make progress towards effective teaching.</p>
Dyslexia	<p>Total Number of Students Receiving Dyslexia Intervention Services in grades K-12 during the 2023-2024 school year: 1994</p> <p>Northeast's dyslexia specialist has coordinated one cohort for Take Flight training. Districts have seen a positive impact on student performance after participating in the Take Flight training.</p> <p>Northeast's dyslexia specialist has coordinated Sunday training (Science of Reading 3 Days, Sunday System 1 - 1 Day, and Sunday System 2- 1 Day) for 35 participants. Districts have seen a positive impact on student performance after participating in the Sunday training.</p>

Statewide Cooperative Finance Overview

Arkansas Educational Funding Cooperatives are funded from three primary sources: state, local, and federal.

State funds are awarded to Educational Service Cooperatives through targeted grants. The grant budgets and goals originate from the Arkansas Department of Elementary and Secondary Education. Grant funds are reimbursed by DESE after program appropriate expenditures occur. The grants include targeted funds for reading specialists/coaches, math specialists, dyslexia specialists, science specialists, technology specialists, special education, curriculum training, and other grants as determined by DESE. The funds are carried over only by special permission from the Department of Education. DESE also provides \$408,000 annually to each cooperative for general operations. State funds represented 34.54% of all cooperative revenues in FY24 or \$59,312,684.

Local revenue is money that comes to a cooperative from local school districts by agreement. The services associated with these agreements include staff shared between districts, professional development services, special education testing, interest income, cooperative operations, repair services, and other special projects as determined by participating districts and the cooperative. Local funds accounted for 37.05% of cooperative revenue or \$63,636,084 in FY24.

Federal funds are governed by federal & state laws and rules for each program. They are reimbursed by DESE after program-appropriate expenditures are made. Balances are regulated by federal rules. Federal Programs operated through cooperatives include the Migrant program, Arkansas Better Chance, the Perkins Program, and Special Education ages 3-5. Currently cooperatives have ARP ESSER funds that are associated with ABC, Early Childhood Special Education, and the Homeless program. For the fiscal year 2024, the cooperative Federal revenue total was \$48,136,507 or 28.03% of all FY24 revenue.

Total revenue for 23-24 was \$171,741,194. This includes the broad categories above, plus revenue of \$655,920. Additional revenue occurred in select cooperatives and included insurance claims, food service programs for students, and other revenue streams not common to the group.

NEAEC Cooperative Finance Overview

The NEAEC is funded from three primary sources: state, local, and federal.

State funds are awarded to Educational Service Cooperatives through targeted grants. The grant budgets and goals originate from the Arkansas Department of Elementary and Secondary Education. Grant funds are reimbursed by DESE after program appropriate expenditures occur. The grants include targeted funds for reading specialists/coaches, math specialists, dyslexia specialists, science specialists, technology specialists, special education, curriculum training, and other grants as determined by DESE. The funds are carried over only by special permission from the Department of Education. DESE also provides \$408,000 annually to each cooperative for general operations. State funds represented 58.20% of NEAEC's revenues in FY24 or \$3,221,636.

Local revenue is money that comes to a cooperative from local school districts by agreement. The services associated with these agreements include staff shared between districts, professional development services, special education testing, interest income, cooperative operations, repair services, and other special projects as determined by participating districts and the cooperative. Local funds accounted for 24.82% of NEAEC's revenue or \$1,373,876 in FY24.

Federal funds are governed by federal & state laws and rules for each program. They are reimbursed by DESE after program-appropriate expenditures are made. Balances are regulated by federal rules. Federal Programs operated through cooperatives include the Migrant program, Arkansas Better Chance, the Perkins Program, and Special Education ages 3-5. Currently cooperatives have ARP ESSER funds that are associated with ABC, Early Childhood Special Education, and the Homeless program. For the fiscal year 2024, the NEAEC's Federal revenue total was \$870,618 or 15.73% of all FY24 revenue.

Total revenue for 23-24 was \$5,535,754. This includes the broad categories above, plus revenue of \$69,623. The additional revenues were related to an insurance claim.

SELECTION CRITERIA: ALL

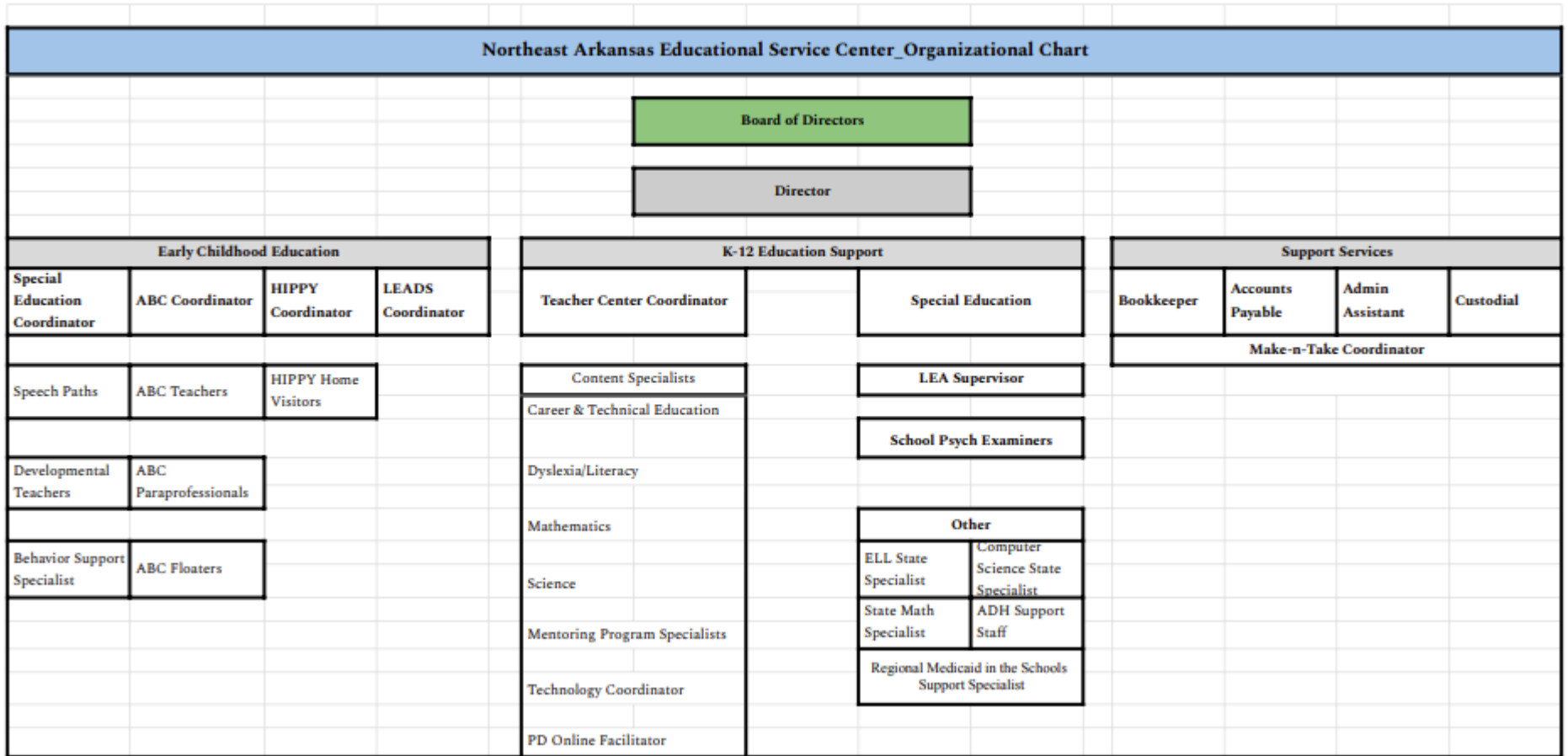
FUND/SF	FUND TITLE	BEG BALANCE	REVENUE	NON-REVENUE	NON-EXPEND	EXPENDITURES	END BALANCE
0001	DISBURSEMENT FUND	.00	.00	.00	.00	.00	.00
TOTAL NO	FUND GROUP TITLE	.00	.00	.00	.00	.00	.00
2001	CERTIFICATE OF DEPOS	309,828.93	100,447.05	.00	.00	.00	410,275.98
2005	MAKE AND TAKE	18,835.72	7,795.43	.00	.00	323.34	26,307.81
2012	PROFESSIONAL DEVELOP	154,838.28	106,465.03	.00	.00	98,730.30	162,573.01
2019	GT PASSTHRU	2,649.32	.00	.00	.00	1,908.64	740.68
2020	SP ED PROF DVLPMT	312,619.17	22,409.92	.00	.00	41,912.66	293,116.43
2024	LEADS TRAINING	.00	21,285.00	.00	.00	21,285.00	.00
2025	PLG CONSORTIUM	.00	116,703.76	.00	.00	46,500.00	70,203.76
2026	CAMBIUM - K2 SPEC.	.00	85,962.88	.00	.00	85,962.88	.00
2027	LOCAL LEADS - WATERS	1,527.65	3,300.01	.00	.00	.00	4,827.66
2028	AR HEAD START STIPEN	.00	.00	.00	.00	.00	.00
2029	FOR PAY PRE-SCHOOL	420,938.44	110,665.68	.00	.00	9,100.94	522,503.18
2030	SP ED PRESCHOOL LOCA	258,445.68	51,600.00	.00	.00	20,348.00	289,697.68
2037	RGNL SMART START (CG	8,203.96	.00	.00	.00	.00	8,203.96
2042	LEA SUPV - SIMS	488.80	93,831.51	.00	.00	94,320.31	.00
2043	SCH PSYCHOLOGY SPECI	3,706.61	218,046.72	.00	.00	221,753.33	.00
2061	TECH COORD FY09 FUND	2,905.07	.00	.00	.00	2,322.77	582.30
2070	PARAPRO WKSPS	7,749.34	.00	.00	.00	.00	7,749.34
2073	CPR FUND	136.50	.00	.00	.00	92.50	44.00
2084	MATH FUNDS FROM SCHO	6,284.12	.00	.00	.00	.00	6,284.12
2091	VOC ED/WF/CP SCHOOL	31.40	.00	.00	.00	.00	31.40
2220	ADE NATIONAL BOARD C	.00	.00	.00	.00	.00	.00
2244	SP ED EXT SCHOOL YR	117.40	666.00	.00	.00	773.18	10.22
2246	MENTORING	9,710.28	117,713.94	.00	.00	127,424.22	.00
2260	EC STATE SP ED	164,300.53	419,713.29	.00	.00	553,052.53	30,961.29
2262	EIDT PRESCHOOL SPED	25,626.64	149,073.41	.00	.00	120,462.82	54,237.23
2271	G/T ADVANCE PLACEMEN	11,610.61	.00	.00	.00	941.24	10,669.37
2291	WORKFORCE ED	.00	60,000.00	.00	.00	60,000.00	.00
2352	ELL SPECIALIST	906.24	25,522.74	.00	.00	26,428.98	.00
2360	GENERAL COOP	1,120,956.22	451,769.55	164,622.83	.00	565,694.93	1,171,653.67
2362	TECH COORD	.00	80,000.00	.00	.00	80,000.00	.00
2364	SPECIALIST GRANT	.00	270,000.00	.00	.00	270,000.00	.00
2365	ABC (AR BETTER CHANC	.00	1,682,062.58	.00	40,000.00	1,642,062.58	.00
2373	ABC/HIPPY	.00	191,294.00	.00	12,000.00	179,294.00	.00
2383	DESE LEARNING SERVIC	136,024.03	.00	.00	.00	58,486.20	77,537.83
2390	PHONE FREE SCHOOL	.00	.00	.00	.00	.00	.00
2902	SCHOOL BASED HEALTH	50.00	.00	.00	.00	.00	50.00
2905	NTL PROGRAM	1,366.73	35,000.00	.00	.00	32,926.72	3,440.01
2942	COMPUTER SCI. INITIA	.00	5,975.62	.00	.00	5,975.62	.00
2946	ALL-STATE CODING AWA	.00	32,811.90	.00	20,000.00	12,811.90	.00
TOTAL NO	FUND GROUP TITLE	2,979,857.67	4,460,116.02	164,622.83	72,000.00	4,380,895.59	3,151,700.93
3000	BUILDING FUND	916,820.61	.00	.00	.00	76,050.40	840,770.21
TOTAL	BUILDING FUND	916,820.61	.00	.00	.00	76,050.40	840,770.21
6552	ARPA SUSTAINABILITY	122,452.55	.00	.00	.00	120,249.53	2,203.02
6560	DHS-CHILDCARE ASST G	232,646.13	.00	.00	.00	.00	232,646.13
6562	CHILD CARE ARPA GRAN	6,977.53	.00	.00	.00	6,977.53	.00

NORTHEAST ARKANSAS EDUCATIONAL COOP
 DETAILED STATEMENT OF CHANGES IN FUND BALANCES
 FOR PERIODS 1 THROUGH 12 OF 25

SELECTION CRITERIA: ALL

FUND/SF	FUND TITLE	BEG BALANCE	REVENUE	NON-REVENUE	NON-EXPEND	EXPENDITURES	END BALANCE
6563	DHS QUALITY APPROVAL	114,544.20	.00	.00	.00	92,974.90	21,569.30
6565	DHS QUALITY IMPROVEM	.00	.00	.00	.00	.00	.00
6569	DHS ARPA - EXPANSION	.00	.00	.00	.00	.00	.00
6570	CARL PERKINS	.00	350,921.80	.00	.00	350,921.80	.00
6574	PERKINS RECRUIT&RETE	.00	9,883.34	.00	.00	9,883.34	.00
6575	CTE VR EQUIPMENT GRA	.00	.00	.00	.00	.00	.00
6577	CTE CERTIFICATIONS G	470.00	7,276.51	.00	.00	7,746.51	.00
6581	CARL PERKINS PROV. D	.00	1,500.00	.00	.00	1,500.00	.00
6704	ARP SPED EC	.00	.00	.00	.00	.00	.00
6710	EC 619 SP ED	5,328.93	177,438.45	.00	.00	93,121.74	89,645.64
6749	MEDICAID FOR PRE-SCH	74,876.99	12,301.02	.00	.00	43,472.31	43,705.70
6752	MEDICAID ADMIN	157,646.58	26,987.80	.00	.00	.00	184,634.38
6788	EC LOCA LEADS	127,851.71	150,000.00	.00	.00	277,851.71	.00
6809	ARP - ABC STIPEND	.00	650.00	.00	.00	650.00	.00
6812	COMMUNITIES OF PRACT	.00	148,300.00	.00	.00	148,300.00	.00
6834	PHONE-FREE SCHOOL	.00	23,511.25	.00	23,511.25	.00	.00
6861	PREK QUALITY INCENTI	.00	25,500.00	.00	.00	.00	25,500.00
TOTAL NO	FUND GROUP TITLE	842,794.62	934,270.17	.00	23,511.25	1,153,649.37	599,904.17
7001	EMPLOYEE FUND	14.77	330.00	.00	.00	272.00	72.77
7013	MAYNARD	1,633.97	.00	.00	.00	.00	1,633.97
7014	WALNUT RIDGE	4.84	1,720.00	.00	.00	1,600.49	124.35
7017	HILLCREST	1,463.74	1,248.50	.00	.00	2,053.06	659.18
7018	SLOAN HENDRIX	340.00	402.00	.00	.00	348.00	394.00
7021	PIGGOTT	987.15	.00	.00	.00	.00	987.15
7031	CORNING	601.05	.00	.00	.00	.00	601.05
TOTAL NO	FUND GROUP TITLE	5,045.52	3,700.50	.00	.00	4,273.55	4,472.47
TOTAL		4,744,518.42	5,398,086.69	164,622.83	95,511.25	5,614,868.91	4,596,847.78

NEAESC Organizational Chart



Northeast Arkansas Education Service Cooperative

Officers of the Board

Name	Position	School District
Daryl Blaxton	Director/Ex-officio	Northeast Education Coop
Scott Gauntt	President	Westside
Clifford Rorex	Vice-President	Sloan-Hendrix
Keith Richey	Secretary	Marmaduke

Members of the Board

Name	Position	School District
Jennifer Woolard	Board Member	Corning
Scott Gerrish	Board Member	Greene County Tech
Mike Smith	Board Member	Hillcrest
Kelly Gillham	Board Member	Hoxie
Chester Shannon	Board Member	Jackson County
Terry Belcher	Board Member	Lawrence County
Dr. Amy Jackson	Board Member	Maynard
Dr. Nick Jankoviak	Board Member	Paragould
Freddie Bowen	Board Member	Piggott
Dr. Lance Arbuckle	Board Member	Pocahontas
Johnny Fowler	Board Member	Rector

Northeast Arkansas Education Cooperative Annual Report

DATE: May 1, 2025



Arkansas Department of Education...

Arkansas Department of Education
Education Service Cooperative (ESC) Annual Report

DATE: May 1, 2025

LEA# 38-20

ESC# 3

ESC NAME: Northeast Arkansas Education Service Cooperative

ADDRESS: 211 West Hickory; Walnut Ridge, Arkansas 72476

PHONE NUMBER: 870-886-7717

DIRECTOR: Daryl Blaxton

TEACHER CENTER COORDINATOR: Saundra Lamberson

NAMES OF COUNTIES SERVED: Lawrence, Greene, Jackson, Clay, Randolph, Craighead

NUMBER OF DISTRICTS: 14

NUMBER OF STUDENTS: 17,024

NUMBER OF TEACHERS: 1,453

FREE LUNCHES: 7,322

REDUCED LUNCHES: 1,532

I. GOVERNANCE:

How is the co-op governed?

Board of Directors X or Executive Committee _____

How many members on the Board? 14 Executive Committee

How many times did the Board meet? 12 Executive Committee

When is the regular meeting? Last Wednesday of each month

Date of current year's annual meeting: May

B. Does the co-op have a Teacher Center Committee? YES X NO _____

If yes, then:

How many are on the Teacher Center Committee? 14

How many members are teachers? 8

How many times did the Teacher Center Committee meet? 3

When is the regular meeting? As scheduled (three times per year)

When was the most recent survey/needs assessment conducted? Spring 2025

Have written policies been filed with the Arkansas Department of Education?

Yes X No _____

STAFFING:

Please list (or attach a list of) all staff members of the co-op (including those housed at the co-op and paid through other sources), their titles and the salary funding sources for the positions. Place an asterisk (*) beside those who are housed at the co-op only and whose salary does not flow through the co-op's budget. (S=State, F=Federal, H=Head Start, M=Medicaid, P=Private, B=Base Funds, D=District, P=Private)

*	Name	Position	Funding Source	New Hire	Resigned
	Daryl Blaxton	Director	Base		X
	Saundra Lamberson	TCC	Base	X	
	Kristi Graham	Bookkeeper	Base		
	Ashley Durham	Assistant Bookkeeper	Base		
	Mary Horton	Administrative Assistant	District/Base		
	Angie Koons	Administrative Assistant	Base		
	Bruce Watson	Technology Coordinator	State		
	Emily Hemme	Recruitment and Retention Facilitator	State		
	Rhonda Fowler	CTE Coordinator	State/Fed.		
	Aaron Buchman	Science Specialist	State		
	Kim Washburn	Math Coordinator	State		
	Dorothy Anderson	Dyslexia Specialist	State		
	Dawn Sims	LEA Supervisor	Districts		
	Chrissy Sain	Local Leads	State		
	Beth Orrick	Creative Materials Specialist/Media	Private/Base		
	Dawn Sims	LEA Supervisor	Districts		
	Micah Hightower	School Psychology Specialist	Districts		
	Meghan Vandergriff	School Psychology Specialist	Districts		
	Amber Broadway	School Psychology Specialist	Districts	X	
	Pamela Douglas	Custodian	Base		
	Mandy Durham	Preschool Special Education Coordinator	State		
	Paula Swindle	ABC Coordinator	State		
	Danette Penn	ABC Secretary	State		
	Kate Zackary	Behavior Specialist	State		
	Shaun Kirby	Hippy Coordinator	State		
	Ronda Underwood	Hippy Home Visitor	State		
	Charlotte Golden	Hippy Home Visitor	State		
	Errin Yandell	Hippy Home Visitor	State		
	Brittney Doyle	Speech Pathologist	State		
	Stephanie Anderson	Speech Pathologist	Federal		
	Stephanie McCormic	Speech Pathologist	Federal		
	Lara Lewis	Speech Pathologist	State		

*	Name	Position	Funding Source	New Hire	Resigned
	Paula Williams	Itinerant Special Ed Teacher	Federal		
	Karen Hogland	Itinerant Special Ed Teacher	Federal		
	Debbie Emison	Itinerant Special Ed Teacher	Federal		
	Cheryl Dickey	SPED Para-Pro	Federal		
	Tristen Williams	SPED Para-Pro	Federal		
	Sherri Lamers	Itinerant Special Ed Teacher	State		
	April Smith	Early Childhood Teacher	State		
	Rita Priest	Early Childhood Teacher	State		
	Brittany Autry	Early Childhood Teacher	State		
	Amanda Voyles	Early Childhood Teacher	State		
	Ashley Cummings	Early Childhood Teacher	State		
	Christal Allmon	Early Childhood Teacher	State		
	Sondra Brown	Early Childhood Teacher	State	X	
	Jessica Lawrence	Early Childhood Teacher	State		
	Jessica Crisler	Early Childhood Teacher	State		
	Kelly Samons	Early Childhood Teacher	State		
	Marilyn Wellman	Early Childhood Teacher	Private		
	Danielle Brewer	Early Childhood Teacher	State		
	Leslie Woodard	Early Childhood Teacher	State		
	Amanda Smith	Early Childhood Teacher	State		
	Lindsey Crisler	Early Childhood Teacher	State		
	Audra McIntire	Teacher Asst./EC Teacher	State	X	
	Reva Hill	Early Childhood Teacher	State		
	Destiny Autry	Early Childhood Teacher	State		
	Sarah Chappel	Early Childhood Teacher	State		
	Courtney Johnson	Early Childhood Teacher	State		
	Kathy Holt	Teacher Assistant	State		
	Dana Davis	Teacher Assistant	State		
	Tessa Stanley	Teacher Assistant	State		
	Brandy Gibson	Teacher Assistant	State		
	Dana Ward	Teacher Assistant	State		
	Shantelle Sullinger	Teacher Assistant	State		
	Brittany Richardson	Teacher Assistant	State		
	Crystal Fleming	Teacher Assistant	State		
	Bonnie Yasler	Teacher Assistant	State		
	Sherrie Johnson	Teacher Assistant	State		
	Brandi Howard	Teacher Assistant	State		
	Christine Stallings	Teacher Assistant	State	X	
	Lacey Bounds	Teacher Assistant	State		
	Tina Gibson	Teacher Assistant	State	X	

	Caylea Brand	Teacher Assistant	State	X	
	Lana Mullins	Teacher Assistant	State		
	Renee Autry	Teacher Assistant	State		
	Kim Blakeney	Teacher Assistant	State		
	Shelby Britton	Teacher Assistant	State		
	Ashley Ezell	Teacher Assistant	State		
	JoAnne Mabrey	Teacher Assistant	State	X	
	Michelle Foster	Teacher Assistant	State		
	Danette Murphy	Teacher Assistant	State		
	Oscar Smith	Custodian	Private		
	Makayla Raney	Teacher Assistant	State	X	
	Sarah Fowler	Teacher Assistant	State	X	
	Brittany Brummel	Teacher Assistant	State		
	Tiffany Culver	Teacher Assistant	State		
*	Nicole Babcock	Community Health Nurse	State		
*	Tahnaya Price	Statewide Math Specialist	State		
*	Zack Spink	Computer Science Specialist	State		
*	Brent Miller		State		
*	Keena Smith	Northeast MITS Advisor	State		
*	Taylor James	CDC Supervisor	State		

TEACHER CENTER

Please attach a list of all in service training/staff development workshops offered through the co-op, including month offered, topic, number of districts participating, number of participants and location of workshops. Place an asterisk (*) beside those which provided curriculum assistance. Include a cumulative total of participants. See attached form.

- A. Does the co-op provide media services to schools? YES [] NO [X]
- Does the co-op provide delivery to the districts? YES [] NO [X]
- Does the co-op operate a "make-and-take" center for teachers? YES [X] NO []

How many teacher visits have been made to the center? (Count all teachers who have visited the center, using duplicate counts for teachers who have visited the center more than once).

Number of all Participants: 1315

ADMINISTRATIVE SERVICES

Please check administrative services offered through the co-op:

- [X] Cooperative purchasing
- [X] Conduct Annual Needs Assessment/Planning assistance
- [X] Special education services
- [X] Gifted and talented assistance
- [X] Grant writing assistance
- [X] Personnel application
- [X] Assist/support with Evaluation procedures
- [] Migrant student Identification
- [X] Bookkeeping assistance
- [X] Technology training
- [X] Curriculum alignment
- [X] Business Management training
- [X] Computer technician
- [X] Assessment data analysis
- [X] Instructional facilitator training
- [X] Math coaches training

- Math/Science/Dyslexia specialists
- Numerous professional development opportunities for teachers
- Administrators and local board members
- Other (please specify)

Carl Perkins
 Bus Driver Training
 Custodial: Asbestos, School Maintenance, OSHA
 Pre-Requirement Training
 School Board Training
 Athletic Coaching Institute

DIRECT SERVICES TO STUDENTS

Please check the student services provided through the co-op:

- Student assessment program
- Itinerant teachers – please list areas: ECSE, SPED, etc.
- Music, art, speech pathology
- Occupational therapy and physical therapy
- Transition Assistance
- Mentor programs: Novice Teacher Mentoring
- Gifted/talented programs: _____ participating districts
- Digital instruction
- Speech therapist
- Low incidence handicapped
- Other (Please specify): Nursing, HIPPY, Project Fair, Visual and Performing Arts Festival, Quiz Bowl, Chess Tournament, Story Store

ANECDOTAL REPORTS

Please attach three or four descriptions of activities which demonstrate partnerships, agreements or creative ways that the co-op has assisted local districts. The co-op personnel may write the reports, or the descriptions may be written by local schools served by the co-op. These reports may also include letters sent to the co-op or evaluations of a co-op activity:

Visual and Performing Arts Festival:

This Visual and Performing Arts Festival has been an annual event for the past 23 years. This year's festival had over 280 participants from Cooperative districts. We were honored to have Ms. Carrie Mae Snapp as our emcee. A retired educator with over 26 years of teaching experience, she has made an indelible mark both in and out of the classroom. She played a key role in building the Mt. View Folk Center, spent 15 years running the Front Street Theater in Walnut Ridge, and is currently an instructor at Black Bird Fine Arts.

Recycling of Eclipse Glasses:

We have collected over 150,000 eclipse glasses from across our member districts, the state, and the country through our partnership with Astronomers Without Borders. We have processed 57,500 of them with volunteer help from students at our member districts. Hoxie High School sent 10 students and spent 3 hours sorting, bundling, and boxing glasses.

Hendrix College Science Development Partnership:

Hendrix College is using fifth grade ATLAS data to develop video games that help teach science content. Four standards were selected with input from Science Specialists. Aaron Buchman, Science Specialist for the NEA Education Cooperative, is a consultant for this project.

Athletic Coaching Institute:

The Athletic Coaching Institute is a two-day annual collaboration between ASU, Crowley's Ridge Education Cooperative and the Northeast Arkansas Education Cooperative. For over a decade Ron Carrol, director of the Institute, and his staff, have provided trainings on-site at ASU on a variety of topics.

Teacher Center:

This year we have been able to serve our 14 districts in creative ways. We worked closely with our schools to create classroom materials for countless teachers. We were able to assist our districts with materials for improvement projects in Literacy, Science, Math, Special Education, and behavior. We worked closely with our districts to develop materials to visually show a student's progress as well as encourage growth. We were able to work with our preschool teachers to develop materials that will

improve gross and fine motor skills. We created materials used for many school events throughout the year.

We have been fortunate to serve our community as well. We work closely with our local hospital and nursing homes to develop materials used to assist staff and residents. These materials aide staff in workplace safety, daily duties, trainings, and morale. Residents received materials to increase activity levels, cognition, improve daily functioning, and medical/dietary needs. We have created many materials used in community events. Some of these include local festivals, parades, upcoming elections, and community outreach. We have worked closely with local churches to provide materials for Sunday school, VBS, programs, Bible studies, and upcoming events. We have worked with nonprofits to create materials for fundraising. We have created flyers for food pantries and clothing distribution. We work closely with area libraries to create materials for daily and event use. We create materials used in local businesses as well as working with community members on personal projects.

EARLY CHILDHOOD SALARY SCHEDULE

Schedule 12S FY18 Speech 190 Days Hours/Day 8.00

Step 20 Range 5

Step		SLP ('02)	SLP ('01)	Yrs.EXP.
1		\$41,763	\$42,238	0
2		\$42,234	\$42,709	1
3		\$42,705	\$43,180	2
4		\$43,176	\$43,651	3
5		\$43,647	\$44,122	4
6		\$44,118	\$44,593	5
7		\$44,589	\$45,064	6
8		\$45,060	\$46,006	7
9		\$45,531	\$46,477	8
10		\$46,002	\$46,948	9
11		\$46,473	\$47,419	10
12		\$46,944	\$47,890	11
13		\$47,415	\$48,361	12
14		\$47,886	\$48,832	13
15		\$48,357	\$49,303	14
16		\$48,828	\$50,353	15
17		\$49,878	\$50,903	16
18		\$50,428	\$50,903	17
19		\$50,975	\$51,453	18
20		\$51,528	\$52,003	19

EARLY CHILDHOOD SALARY SCHEDULE
SCHEDULE 10t Teachers

STEP	BSE	MSE	Yrs. EXP.
1	\$36,000	\$40,650	0
2	\$36,450	\$41,150	1
3	\$36,900	\$41,650	2
4	\$37,350	\$42,150	3
5	\$37,800	\$42,650	4
6	\$38,250	\$43,150	5
7	\$38,700	\$43,650	6
8	\$39,150	\$44,150	7
9	\$39,600	\$44,650	8
10	\$40,050	\$45,150	9
11	\$40,500	\$45,650	10
12	\$40,950	\$46,150	11
13	\$41,400	\$46,650	12
14	\$41,850	\$47,150	13
15	\$42,300	\$47,650	14
16	\$42,750	\$48,150	15
17	\$43,200	\$48,650	16

EARLY CHILDHOOD SALARY SCHEDULE
SCHEDULE 10H AIDE/HIPPY

Step	AIDES	AIDES/AA	HIPPY	Yrs. EXP.
1	\$16,225	\$16,576	\$17,576	0
2	\$16,475	\$16,826	\$17,826	1
3	\$16,725	\$17,076	\$18,076	2
4	\$16,975	\$17,326	\$18,326	3
5	\$17,225	\$17,576	\$18,576	4
6	\$17,475	\$17,826	\$18,826	5
7	\$17,975	\$18,326	\$19,326	6
8	\$18,475	\$18,826	\$19,826	7
9	\$18,975	\$19,326	\$20,326	8
10	\$19,475	\$19,826	\$20,826	9
11	\$19,975	\$20,326	\$21,326	10
12	\$20,475	\$20,826	\$21,826	11

TEACHER CENTER COMMITTEE
 Northeast Arkansas Education Cooperative
 2024-2025
 Representatives for Teacher Center Committee

Elementary Teacher Positions		Years to Serve	Expires
Maynard	Jeanise Lawrence	3	2023 - 2026
Rector	Brooke Clayton	3	2023 - 2026
Hoxie	Dawn Kopp	3	2024 - 2027

Middle – Jr. High Teacher Position

Lawrence County	Hillary Anderson	3	2023 - 2026
Greene County Tech	Amber Puckett	2	2022 - 2025
Paragould	Vicki Baker	3	2024 - 2027

High School Teacher Positions

Jackson County	Danielle Wood	2	2022 - 2025
Paragould	Sara Dickey	1	2021 - 2024
Marmaduke	Maria Vowell	3	2024 - 2027
SloanHendrix	Jordan Brooks	3	2024 - 2027

Administrative Positions for Teacher Center Committee

Elementary Administrative Positions

Westside	Pam Dooley	1	2021 - 2024
Corning	Heather Clifton	3	2024 - 2027
Westside	Katie Edlemon	3	2024 - 2027

Middle - Jr. High Administrative Position

Pocahontas	Bethany Miller	3	2024 – 2025
------------	----------------	---	-------------

High School Administrative Positions

Piggott	Misti Lovelace	3	2023 - 2026
Hillcrest	Natasha Turner	3	2024 - 2027

Private School

St. Mary’s	Lee Ann Owen	2024
St. Paul	Rebecca Steimel	2024
CRA	Wayne Freer	2024
Imboden Charter	Open	

Northeast Arkansas Education Cooperative
DATE: May 1, 2025



Program Summaries.....

PROGRAM: Arkansas Better Chance Preschool

FUNDING SOURCE: State

COMPETITIVE GRANT: Yes No **X**

RESTRICTED X NON-RESTRICTED ___

PARTICIPATING DISTRICTS:

Corning, Hillcrest, Hoxie, Lawrence County, Maynard, Piggott, Rector, Sloan-Hendrix,

CURRENT ENROLLMENT: 384

BILLABLE NUMBER OF ABC SLOTS: 330

PERSONNEL:

Paula Swindle	ABC Coordinator
Danette Penn	ABC Secretary

GOAL:

The Northeast Arkansas Education Cooperative Early Childhood ABC programs will ensure that all Arkansas children and families that we serve have access to a safe, high-quality, developmentally appropriate environment by educating and assisting parents and communities to prepare our children for future success.

PROGRAM SUMMARY:

The Northeast Arkansas Education Cooperative ABC programs consists of 20 classrooms across 8 sites and 3 counties

- **Staff Qualifications:** Each preschool classroom has a classroom teacher that is fully certified, or is working under an SQP (Staff Qualification Plan) in order to acquire certification. Each classroom has a paraprofessional who has completed an Associate’s Degree, or a CDA certification, or is working toward certification under an SQP. A floater is also employed at each site. All staff, including floaters and substitutes are required to take an 8-hour New Staff Orientation training, CPR, and Arkansas Mandated Reporter which provides a general overview of the rules and regulations pertaining to the program.
- **Licensing:** All programs have met Quality Approval Child-Care Standards and have met or exceeded their Better Beginnings ratings. The Better Beginnings ratings range is from 1 to 6. We currently have five sites with a rating of 3, and three sites that have leveled up to a 4.

MAJOR HIGHLIGHTS OF THE YEAR:

1. All sites have major upgrades completed at their sites. Some of the major improvements include large custom playground structures, shades, and trike paths, along with additional smaller structures such as balance beams, stationary buttons, spin cups, seesaws, dome climbers, ball toss-ups, chalkboard flowers, and more. Each site was able to customize their site to the needs of their students.
2. All sites are working to implement the Science of Reading practices at the preschool level using developmentally appropriate practices that development oral language skills and phonological awareness, both precursors to becoming proficient readers.
 - (a) Teachers fully implementing Launchpad, which is the mode of delivery for literacy instruction at the preschool level.
 - (b) Teachers administered beginning-of-year (BOY) and end-of-year Launchpad assessments (EOY) in order to measure growth in such areas as phonological awareness, upper-case and lower-case letter recognition, etc.
 - (c) Updating staff files, including substitute teachers, and providing notification and support to personnel needing required professional development.
 1. Worked with ABC Licensure to ensure that all teachers and paraprofessionals have the training in the 12 required areas.
 2. Hosted a workday for substitute teachers to assist them in completing the mandated New Staff Orientation training
3. Teachers have fully implemented the Frog Street Curriculum is a comprehensive curriculum that covers literacy, math, and science through a myriad of engaging, hand-on activities. Teachers will have an in-person training on July 11th of Frog Street, this will focus on integrating this curriculum with Launchpad.
4. Supported ongoing professional development opportunities for preschool teachers, paraprofessionals, floaters, and substitutes. Staff and substitutes received onsite training in CPR/First Aid, New Staff Orientation, ethics, updates to the program, etc.
5. Supported staff in working toward higher education levels by providing assistance in applying to the T.E.A.C.H program. This program pays 95% of the cost of tuition and books and provides release time for the participants to work on their coursework.
6. Encouraged participation in the Step Up to WAGE\$ initiative, which provides twice yearly stipends to qualifying staff (criteria based on hours worked and salary) as an incentive to help retain staff by supplementing wages.
7. The Teachers and Para's have been introduced to CLASS Training. The CLASS training is focused on interaction with children and expanding children's vocabulary.
8. The ABC Program has been granted 12 additional Slots fir the year 2025-2026. The Director Mr. Blaxton will inform the Northeast Arkansas Coop Board and discuss physical space and needs.

PROGRAM: ArPEP

FUNDING SOURCE: Arkansas Department of Education

COMPETITIVE GRANT: Yes No

RESTRICTED **NON-RESTRICTED**

PARTICIPATING DISTRICTS: PERSONNEL:

Northeast Arkansas Region Wide

Personnel:

Name	Position	Degree
Angelia Carlton	Facilitator/Instructor	MSE
Debbie Smith	Facilitator/Instructor	EDS
Various Instructors		

GOAL:

ArPEP’s goal is to prepare learner-ready teachers to meet the growing demand of the teacher pipeline in Arkansas and to provide a local training site for teacher preparation and instructional delivery in the Non-Traditional Licensure program for Northeast Arkansas local districts.

PROGRAM SUMMARY:

The Arkansas Professional Educator Pathway (ArPEP) is an affordable two-year, work-based training, alternative education route to obtaining an Arkansas standard teaching license for college graduates or career changers holding at least a bachelor’s degree. ArPEP’s goal is to prepare learner-ready teachers to meet the growing demand of the teacher pipeline in Arkansas. The primary objective of ArPEP is to train future educators on how to build classroom communities, design effective lesson plans, implement evidence-based instructional strategies, and use assessments to facilitate student learning.

The ArPEP facilitator prepares educators to become someone who understands what accomplished beginning teaching looks like in a classroom and, more importantly, can demonstrate how effective teachers design lessons, provide instruction, build classroom communities, and utilize assessments to facilitate student learning.

The facilitator/s also coordinates documentation and requirements for licensure, beginning with the ArPEP application to get into the program and concluding with the ArPEP teacher transitioning from their Provisional license to their Standard license. This includes ensuring Year 1 teachers complete the

required professional development and ethics training, as well as training for their Science of Reading Awareness credential and Phase I of their Proficiency credential.

For the school year 2024-2025 ArPEP Year 1 had 16 candidates and ArPEP Year 2 had 11 candidates.

MAJOR HIGHLIGHTS OF THE YEAR:

Participants becoming successful teachers and making a difference for the students of Arkansas.

PROFESSIONAL DEVELOPMENT DELIVERED:

TESS, Ethics, Lesson Planning, Standards, Classroom Management, Poverty and Mental health, Science of Reading, The Reading Brain, Dyslexia, Parental Involvement, Special Education, Formative Assessment, PLCs.

COMMUNITY SUPPORT:

Preparing teachers to teach students in Arkansas districts.

PROGRAM: ADE/APSCN Student Applications Field Analyst

FUNDING SOURCE: Arkansas Department of Education

COMPETITIVE GRANT: Yes ___ No X

RESTRICTED ___ NON-RESTRICTED ___ NON-APPLICABLE X

PARTICIPATING DISTRICTS:

Corning, Green County Tech, Hillcrest, Hoxie, Jackson County, Lawrence County, Marmaduke, Maynard, Paragould, Piggott, Pocahontas, Rector, Sloan-Hendrix, Westside Consolidated, and Northeast Arkansas Education Cooperative

PERSONNEL:

Melissa Young APSCN Student Field Analyst, Associate of Arts
Cognos, BSE Elementary/Associate of Arts

GOAL:

To provide end-user support to district student users of the SMS statewide student management system, Cognos reports, and meeting statewide guidelines.

PROGRAM SUMMARY:

The Student Applications Field Analyst provides services to districts within Arkansas that utilize the SMS statewide student management system software. The software is used to store district, school, and student data. Student Management Systems Applications is computer software used primarily to process and maintain student records. The SunGard Pentamation student management systems applications provided by APSCN include: Demographics, Attendance, Scheduling, Report Cards, Discipline and Medical. With the use of nine cycles yearly, districts electronically submit data to the ADE. The student field analyst provides districts with consulting and training workshops through meetings at the Cooperative, school visits, and communicating closely by e-mail and telephone. Various trainings offered throughout the year include, but are not limited to, SMS Required Fields for State Reporting, New Personnel, Cognos Report Writing, Next Year Scheduling, and Year End Rollover.

MAJOR HIGHLIGHTS OF THE YEAR:

State Reporting Training

PROGRAM: Behavior Support Specialist

FUNDING SOURCE: Federal-Part B

COMPETITIVE GRANT: Yes_____ No__X__

RESTRICTED FUNDING: __X__ **NON-RESTRICTED FUNDING:**_____

PERSONNEL:

Behavior Support Specialist Coordinator: Shelia Smith, Ph.D., L.P., BCBA-D

Behavior Support Specialists:

- Shana Bailey, M.S., BCBA
- Jennifer Brewer, Ed.S.
- Sandy Crawley, M.S.E
- Kelly Davis, M.Ed., BCBA
- Sonia Hartsfield M.Ed.
- Audrey Kengla, M.S., CCC-SLP
- Amanda Kirby, M.S.E.
- Kat Lancaster, M.A., CCC-SLP, BCBA
- Lindsey Lovelady, M.S., BCBA
- Allison Mears, LPC., BCBA
- Nicheyta Raino, M.Ed., BCBA
- Jenna Stapp, M.A.T.
- Connie Thomason, M.Ed., BCBA
- Mary Walter, Ed.S., SPS, BCBA
- Meagan Booe, M. Ed, BCBA
- Carla Knight, M.S.E., BCBA

PARTICIPATING SCHOOLS: Statewide

GOAL: In an effort to support the DESE vision, mission, and goals, the Arkansas Behavior Support Specialists build local district capacity by providing educators with support and services needed to implement evidenced-based behavioral practices that meet the needs of all students.

BX3 PROJECT

GOAL:

- BX3 is a capacity-building project that provides coaching to school behavior teams working to develop tiered systems of positive behavior supports for all students.

BX3 Cohort 3 - Building level teams

- | | |
|-------------------------------|-----------------------------------|
| 1. Alma Intermediate | 7. Mena High School |
| 2. Bryant Elementary | 8. Oscar Hamilton Elementary |
| 3. Horatio Elementary | 9. Pottsville Junior High |
| 4. Hurricane Creek Elementary | 10. University Heights Elementary |
| 5. McRae Elementary | 11. Asbell Elementary |
| 6. Mena Middle School | |

BX3 Cohort 4 - Building level teams

- | | |
|--|------------------------------------|
| 1. Arkansas Arts Academy High School | 18. Elmdale Elementary-Springdale |
| 2. Magnolia Middle School | 19. Louise Durham Elementary |
| 3. Sidney Deener Elementary | 20. Manila Elementary |
| 4. Westside Elementary - Searcy | 21. K-8 Connect - Springdale |
| 5. Southwest Middle School rcy- WDM | 22. Indian Hills Elementary |
| 6. Janie Darr Elementary | 23. Newport Elementary |
| 7. Arkadelphia High School | 24. East End Elementary |
| 8. Lake Hamilton New Horizons | 25. Lakeside Primary |
| 9. Washington Elementary | 26. Allbritton Elementary |
| 10. Lincoln Middle School | 27. Peak Elementary School |
| 11. Cedarville Elementary | 28. Harmony Leadership Academy |
| 12. Glen Rose Elementary | 29. Rector Elementary School |
| 13. Flippin Elementary | 30. Wonder Jr. High |
| 14. Beebe Elementary | 31. Bayyari Elementary |
| 15. Bob Folsom Elementary | 32. North Heights Community School |
| 16. The Academies of West Memphis | 33. Beebe Middle School |
| 17. Westbrook Elementary - Harmony Grove | 34. Benton Jr High |

BX3 Cohort 5 - Building level teams

- | | |
|-------------------------------|----------------------------------|
| 1. Waldron Middle School | 13. Eureka Springs Elementary |
| 2. Mountainburg Elementary | 14. Eureka Springs Middle School |
| 3. Mountainburg Middle School | 15. McCrory Elementary |
| 4. Mountainburg High School | 16. Augusta Elementary |

5. King Elementary-Van Buren	17. Augusta High School
6. Fairview Elementary- Fort Smith	18. Jerry "Pop" Williams Elementary-Farmington
7. East Side- Magnolia	19. Farmington High School
8. Central Elementary-Magnolia	20. Arkansas Arts Academy Elementary
9. Smackover-Norphlet Elementary	21. Clarendon Elementary
10. Hillcrest Elementary	
11. East End Middle- Sheridan	
12. Sheridan High School	

PROGRAM SUMMARY:

The Arkansas Behavior Support Specialists (BSS) affiliated with the Arkansas Department of Elementary and Secondary education (DESE) - Office of Special Education lead the state-wide initiative, the BX3 (Behavior eXtreme 3 - Training, Coaching, Empowering) Project. This BX3 project is designed to build capacity by providing coaching to building-level behavior teams that are working to develop tiered systems of positive behavior supports for all students. BX3 assists building level teams in developing and monitoring at least one SMART goal based on their assessment on the Tiered Fidelity Inventory (TFI). Additionally, the BX3 teams create and update an action plan focused on meeting their individualized SMART goal(s). The BSS offer 4- 6 coaching sessions for each BX3 team throughout the school year. Professional learning opportunities are offered as needed based on the SMART goal(s) and action plan.

MAJOR HIGHLIGHTS OF 2024-25:

- Cohort 3 continued with 11 building-level teams across the state
- Cohort 4 continued with 34 building-level teams across the state
- Accepted Cohort 5 with 21 building-level teams across the state
- 99% of participants in Cohort 3, 4 and 5 agreed to strongly agreed that the coaching session on the topic covered was beneficial.
- 99% of participants in Cohort 3, 4 and 5 agreed to strongly agreed that the BX3 Coaches helped their team plan action steps toward meeting their SMART goal(s).
- 99% of participants in Cohort 3, 4 and 5 agreed to strongly agreed that the interactions with and methods used by BX3 coaches were positive and acceptable.
- 98% of participants in Cohort 3, 4 and 5 agreed to strongly agreed that they feel confident in carrying out the steps in their action plan.

CIRCUIT

GOAL:

- To provide technical assistance and support to local school district administrators and school personnel in the development and implementation of evidence-based behavior supports for students receiving special education services
- To provide professional development to local school district administrators and personnel on evidence-based behavior supports

PROGRAM SUMMARY:

The Behavior Support Specialists (BSS) provide technical assistance in the area of behavior to all school districts within the state. The BSS receive requests for technical assistance through the CIRCUIT on-line referral system. Once a request for services is received, the BSS works in conjunction with the Special Education Supervisor of the referring school district to identify and provide needed support for students with disabilities. Services include:

- On-site coaching and consultation, student observation, record review and written recommendations with follow up and training as needed
- Coaching student teams on Functional Behavior Assessment (FBA) and Behavior Intervention Plan (BIP) development
- Provide professional learning opportunities on evidence-based interventions

MAJOR HIGHLIGHTS OF 2024-2025:

- Provided on-site coaching and consultation, student observation, records review, assistance with functional behavior assessment, safety and behavior intervention planning for student teams for 155 CIRCUIT referrals across all Education Service Cooperatives

Professional Learning Opportunities**GOAL:**

- To provide professional development to local school district administrators and personnel on evidence-based behavior supports

PROGRAM SUMMARY:

The Behavior Support Specialist (BSS) position provides professional learning opportunities on evidence-based behavior practices via in-person, virtual, and online learning modules available to all school districts in all Education Service Cooperatives.

MAJOR HIGHLIGHTS OF 2024-2025:

- Offered 19 sessions of the 5 Essential Components of School-Wide Behavior Supports professional developments to building-level teams
- Added 10 Behavior Breaks which are short instructional videos to equip educators and parents with strategies that can be implemented quickly to improve student engagement and success. <https://arbss.org/behavior-breaks/>
- Offered over 140 professional learning opportunities in person or virtually to school districts in all Education Service Cooperatives with over 2655 participants

ADDITIONAL BSS HIGHLIGHTS OF 2024-2025:

- Planning for the first annual Arkansas School Behavior Conference
- Partnered with DESE to support THRIVE Leadership Academy Cohorts 5, 6, and 7 and THRIVE Leadership Academy at DeQueen-Mena ESC, Dawson ESC, Southeast ESC, and Arch Ford ESC to

improve the implementation of positive behavior supports in school buildings. Provided 21 professional learning opportunities to THRIVE participants

- Served on the DESE Leadership Team for Arkansas THRIVE
- Served on the Arkansas Early Childhood Behavior Support Cadre'
- Served on the BehaviorHelp Kindergarten Transition Support Planning group
- Served on committee DESE staff and AETN to develop modules on Crisis Management and MTSS-B for AR IDEAS
- Facilitated BCBA's working in the school through ArPSBAN meetings (meet once a month either in person or virtual), connecting BCBA's across the state through a community of practice
- Newsletter is reaching nationally and internationally (8 countries)
- Several states are accessing our online modules including California, Colorado, Nevada and North Carolina
- Presented Multi-Tiered Behavior Support Resources at SEAS Conference
- Presented Mic Drop Sessions - Review of BSS Website at AAEA Conference
- Presented Increasing Student Behavior Supports at the Tier 2 Level: Student Intervention Matching (SIM) Form at the Transition Summit
- Presented Charting the Path to Tier 2 Behavior Interventions: Intro. to the Student Intervention Matching Form at LEA Academy
- Presented Navigating Tier 1 and Tier 2 Behavior Supports in the Inclusive Classroom at LEA Academy
- Presented The BX3 Journey Awaits! Building Capacity in School-Wide Positive Behavior Supports at LEA Academy
- Presented The Behavior Side of RTI with DESE- OCSS for New Administrators
- Presented Meaningful Access ToT: Behavior with DESE-OSE
- Presented Behavior Strategies and Resources at the The Teaching & Partnerships in Juvenile Detention Centers Workshop
- Presenting Supercharging Student Success: An Overview of Multi-Tiered Behavior Support at the ArSCA & DESE School Counselor Conference
- 14 BSS attended the Association of Positive Behavior Supports International Conference in St. Louis, MO
- 1 BSS attended the 23rd Annual NWPBIS Conference in Portland, OR
- 1 BSS attended the LRP Institute Convention in Phoenix, AZ

PROGRAM: Career and Technical Education

FUNDING SOURCE: State Coordinator's Grant and Federal Carl D. Perkins

COMPETITIVE GRANT: Yes ___ No ___

RESTRICTED ___ **NON-RESTRICTED** ___

PARTICIPATING DISTRICTS: Corning, Greene County Tech, Hillcrest, Hoxie, Jackson County, Lawrence County, Marmaduke, Maynard, Paragould, Piggott, Pocahontas, Rector, Sloan-Hendrix, and Westside.

PERSONNEL: Rhonda Fowler, Career and Technical Education Coordinator, B.S. in Business Administration, M.S.E. Educational Leadership

GOAL: The Career and Technical Education office's goal is to provide quality support and service to the CTE teachers, administrators, and CTE programs of study while managing Carl D. Perkins funding for the Consortium.

PROGRAM SUMMARY: The Career and Technical Education office is responsible for providing supporting resources to enable public schools to initiate and maintain quality Career and Technical Education programs in accordance with the Arkansas Department of Career Education's Strategic Plan, Goals, and Objectives. The Coordinator encourages the development, implementation, and improvement of CTE programs for all districts in the cooperative service delivery area through the following job tasks:

- Data Collection and Reporting
- Evaluation and Review of Programs
- Technical Assistance and Professional Development
- CTE Initiatives Support through New Startup Grants, Innovation Grants, and State initiatives
- Carl D. Perkins Consortium Administration and Assistance
- Retention and Recruitment of Teachers
 - Training and Support for new teachers
- Representation of the educational cooperative at local, state, and national events and activities, as well as all meetings called by the Department of Career Education

MAJOR HIGHLIGHTS OF THE YEAR:

- Provided professional development in various skill attainment and performance indicator areas.
- Completed the Comprehensive Local Needs Assessment as directed by Perkins V

- Provided grant assistance for new programs of study
- Provided assistance for Innovation Grants
- Implemented Recruitment and Retention Grant
- Recognized Completers of Programs of Study
- The Perkins budget for 2024-2025 was \$ providing professional development, equipment, instructional materials, certifications, software, and other needed assistance for CTE programs.
- The 14 school districts in the Perkins consortium have struggled to meet performance targets in 2024. Contributing factors are:
 - Targets were raised without opportunity for the State to negotiate.
 - Scores are not indicative of performance but from a change in targets.
 - The State has urged us to look at growth over the last three years.
 - Academically, the students were given a new performance exam- ATLAS

Performance reports are online at <https://reports-dcte.ade.arkansas.gov/>

DCTE has introduced new Pathway revisions for 2026-2027. The upcoming year will be an opportunity to plan.

PROGRAM: Computer Science

FUNDING SOURCE: Arkansas Department of Education Grant – Act 220 of 2017

COMPETITIVE GRANT: Yes No

RESTRICTED: **NON-RESTRICTED:**

PARTICIPATING DISTRICTS:

Statewide

Personnel:

Alex Moeller, Statewide Computer Science Specialist
Ashley Kincannon, Statewide Computer Science Specialist
Brian Lawhon, Statewide Computer Science Specialist
John Hart, Statewide Computer Science Specialist, MLIS
Joshua Rodgers, Statewide Computer Science Specialist
Tammy Glass, Statewide Computer Science Specialist
Zachary Spink, Statewide Computer Science Specialist
Stacy Reynolds, Statewide Computer Science Specialist

Goals:

The ADE DCTE Office of Computer Science’s established goals and associated tasks for computer science education implementation in Arkansas are divided into five categories:

1. Standards, Curriculum, and Pathways - Successful implementation of computer science education in Arkansas requires the development and periodic revision of a comprehensive and vertically articulated set of K-12 computer science curriculum standards and courses, the local creation of well-developed curriculum that supports student learning, proper alignment of the K-12 expectations and opportunities to industry needs, and appropriate K-20 pathway development for students seeking formal computer science education beyond high-school.

2. Educator Development and Training - Successful implementation of computer science education in Arkansas requires the ADE and its partner organizations to anticipate and address the needs of the Arkansas educational system with regards to knowledgeable and informed computer science teachers. ADE in collaboration with the Arkansas Educational Cooperatives and other partners must support quality computer science educator development and training opportunities for all Arkansas Educators and Administrators.

3. Licensure - Successful implementation of computer science education in Arkansas requires the ADE and its partner organizations to anticipate and address the needs of the Arkansas educational system with regards to licensed and endorsed computer science teachers. ADE will continue and further research and implement, when appropriate, flexible licensure pathways and practices, based on legislation and regulation.

4. Outreach and Promotion - Successful implementation of computer science education in Arkansas requires the active use of a broad range of mediums, digital tools, and human networks to properly communicate about the Arkansas Computer Science Education Initiative and respond to the needs and concerns of Arkansas students, educators, community members, and industry leaders.

5. Program Growth and Student Success - Successful implementation of computer science education in Arkansas requires encouraging broad school implementation, supporting lighthouse schools to expand their programs, increasing statewide teacher capacity, growing student interest, and increasing stakeholder interest and support using innovative programs and outreach initiatives.

Program Summary:

Education Service Cooperatives, in partnership with the Arkansas Department of Education, administers the Computer Science Support Program for grades K-12 (Support for Integrating the Embedded K-8 Standards; Middle School Introduction to Coding: Grades 5-8; and High School CS). In the interest of providing Arkansas educators with access to quality computer science (CS) professional development (PD), the Arkansas Department of Education (ADE) Office of Computer Science provided grants for ten Computer Science Specialists beginning in 2017. The computer science specialists each serve the CS PD needs state-wide for all ESCs, and Public School Districts. Assistance is provided to local school district educators through PD services including sessions (ADE developed & customized based on needs assessments) at the Cooperative as well as support on-site in living the mission and striving for the vision of Computer Science Instruction in Arkansas.

Vision

All Arkansas students actively engaging in a superior and appropriate computer science education

Mission

To facilitate Arkansas's transition to becoming and remaining a national leader in computer science education and technology careers

PD Offered:

- Computer Science Impact Meeting
- High School Computer Science Certification and Preparation
- Autonomous Vehicle Workshop @ UCA
- Python Programming for Year 1 - High School CS Professional
- Python Programming for Year 2 & 3 - High School CS Professional Development
- Business Intelligence - High School CS/Business Professional
- Cybersecurity for Year 1 - High School CS Professional Development
- Cybersecurity for Year 2 & 3 - High School CS Professional
- Robotics for Year 1 - High School CS Professional Development
- Robotics for Year 2 & 3 - High School CS Professional Development
- Mobile Application Development for Year 1 - High School CS Professional Development
- Computer Science Planning and Pacing for Middle and High School
- Middle School Intro to Coding: Learn Text-Based Code (Formerly Coding Block)

- Computer Science: Teaching K-4
- Computer Science: Teaching 5-8
- Data Science for Year 1 - High School CS Professional Development
- Data Science for Year 2 & 3 - High School CS Professional Development
- Game Development and Design for Year 1 - High School CS
- Game Development and Design for Year 2 & 3 - High School CS Professional Development
- Computer Science: Intro to Block-Based Coding
- Computer Science: Transition to Text-based Coding
- Computer Engineering for Year 1 - High School CS Professional Development
- Networking for Year 1 - High School CS Professional Development
- Precision Agriculture
- Introduction to AI
- EAST Raspberry Pi
- EAST Circuit Playground

Conferences Presented at:

- State TSA Conference
- Arkansas Association for Career and Technical Education
- ADE Summit
- AEA PD Conference
- HSTI
- EAST Conference

Events/Committees/Projects Assisted with:

- National Computer Science Education Week – Scheduled daily activities with local districts - December 2025
- Regional Capture the Flag Events
- TSA State Conference – March 2025
- Support of Robotics Competitions (VEX, FIRST) March 2025
- All-State Coding Competition April 2025
- SkillsUSA April 2025

Major Highlights of the Year:

- Revised pathways and standards across all CS courses
- Supported the work of the Data Science HIRED grant and the Cybersecurity HIRED grant
- Mentoring students across the state in Unity game development.
- Assisted with regional Stakeholder Meetings
- Provided training to annual ADE Counselor sessions
- Provided CS training to over 1853 education professionals and 8311 students.
- Lead Judge and Coding Challenge Creator for All-Region and All-State Coding Competition.
- Provided digital capture the flag events at schools and cooperatives around the state
- Administration statewide site visits for implementation of ACT 414
- Continued growth, development, and support of TSA
- Computer Science Completer Cords

- State of Computer Science Education Report - Code.org
- Partnered in the creation of new computer science related CTE courses

ONGOING SUPPORT:

- Specialists are in the process of revamping trainings for the upcoming summer
- Specialists have increased the number of professional development offerings as well as developed and will deliver several new trainings this summer..
- Specialists are currently working to visit all 260 districts to help support their implementation of ACT 414. This work will continue through the remainder of the year and summer.
 - For districts who already have computer science programs in place, specialists are working to identify ways to grow and develop their program to fit their needs.

PROGRAM: Digital Learning – Virtual Arkansas (2024-2025 Academic Year)

FUNDING SOURCE: ADE Grant – Act

COMPETITIVE GRANT: No

RESTRICTED: Yes **NON-RESTRICTED:** ____

PARTICIPATING NORTHEAST ARKANSAS EDUCATION SERVICE COOPERATIVE SCHOOL DISTRICTS:

Districts	Served (Yes or No)
CORNING SCHOOL DISTRICT	No
GREENE COUNTY TECH SCHOOL DISTRICT	Yes
HILLCREST SCHOOL DISTRICT	Yes
HOXIE SCHOOL DISTRICT	Yes
JACKSON COUNTY SCHOOL DISTRICT	Yes
LAWRENCE COUNTY SCHOOL DISTRICT	Yes
MARMADUKE SCHOOL DISTRICT	Yes
MAYNARD SCHOOL DISTRICT	Yes
PARAGOULD SCHOOL DISTRICT	Yes
PIGGOTT SCHOOL DISTRICT	Yes
POCAHONTAS SCHOOL DISTRICT	No
RECTOR SCHOOL DISTRICT	Yes
SLOAN-HENDRIX SCHOOL DISTRICT	Yes
WESTSIDE CONSOLIDATED SCHOOL DISTRICT (CRAIGHEAD)	Yes

CENTRAL OFFICE AND ADMINISTRATIVE PERSONNEL:

John Ashworth: Virtual Arkansas Executive Director and Superintendent; EdS, MS, BS

Dr. Brandie Benton: Virtual Arkansas Deputy Superintendent of Curriculum and Instruction; Ed.D, MSE, BSE

Mindy Looney: Virtual Arkansas Director of Operations; BS, MBA

Candice McPherson: Virtual Arkansas Director of Design and Development; MS, BS

Amy Kirkpatrick: Virtual Arkansas Director of Technology; MS, BS

Jason Bohler: Core Campus Principal; MA, BA

Samantha Carpenter: Core Campus Principal; EdS, MS, BS

Tye Bibby: Concurrent Credit Campus Principal; MS, BA

Christie Lewis: CTE Campus Director; BBA, MS

Rachael Walston: Learn Anywhere Academy (LAA) Program Principal; MS, BS

MISSION: Our mission is to equip, engage, and empower Arkansas schools, students, and teachers by providing equitable access to superior online education.

VISION: Leveraging local, national, and global partnerships to advance student and educator success through innovative technologies and services.

CORE VALUES: Teamwork, Relationships, Integrity, Quality, Innovation

GOALS:

Virtual Arkansas exists to provide affordable and equitable educational access and opportunities for Arkansas students, teachers, and schools. According to *Act 2325 of 2005*, distance learning opportunities were employed:

- To help alleviate the teacher shortage
- To provide additional course-scheduling opportunities for students
- To provide an opportunity to access an enriched curriculum
- To develop and make available online professional development

Virtual Arkansas has specific goals that drive its operations. These goals are outlined in the chart below, along with the most recent results:

Goals	2024-2025 Results
Help Address the Arkansas Teacher Shortage	<ul style="list-style-type: none">• VA made courses available in all critical academic licensure shortage areas• VA provided access to 101 full-time Arkansas-certified teachers for local schools
Provide a Wide Range of Courses for Arkansas Students	<ul style="list-style-type: none">• VA provided access to 220 total courses; 160 courses with a VA teacher• These courses provided opportunities to 29,121 Content + Teacher enrollments and 6,482 Content Partnership enrollments

Ensure Educational Options for Economically Disadvantaged Students	<ul style="list-style-type: none"> • VA courses were made available to all high-poverty districts and were utilized by 88% of all Arkansas school districts with a 70% or higher FRL population • VA offered preferred automatic concurrent credit registration for high-poverty districts. 100% of high-poverty schools that submitted the necessary paperwork for enrollment during the early registration period were granted seats in the classes for which they registered
Ensure Educational Options for Rural Students	<ul style="list-style-type: none"> • 60% of all Virtual Arkansas Content + Teacher Enrollments were from districts designated as rural • VA provided educational options and opportunities to all rural districts and was utilized by 97% of all districts designated as rural • 80% of all Concurrent Credit enrollments were from districts designated as rural
Provide Educational Options for Students with Scheduling Conflicts	<ul style="list-style-type: none"> • All VA courses can be taken at any time during the day, which provides flexibility in scheduling local course options to avoid scheduling conflicts • This is particularly important for smaller districts, as they have many courses only available during certain periods of the day
Maintain Positive Customer Support Ratings	<ul style="list-style-type: none"> • Virtual Arkansas had a 100% positive rating in customer support/service measures on the 2023-2024 perception survey to administrators and counselors.

PROGRAM SUMMARY:

Virtual Arkansas is a supplemental State Virtual School (SVS) that partners with local Arkansas schools, the Arkansas Department of Education, and the local Education Service Cooperatives to provide 7th-12th grade online courses, resources, and services to Arkansas schools, teachers, and students who might not otherwise have access to these resources and opportunities. This initiative is guided by Act 2325 of 2005: An Act to Provide Distance Learning.

www.virtualarkansas.org

We are not an online high school or a diploma-granting institution, but a resource for supplementing education for students.

Virtual Arkansas is comprised of five campuses:

- Core Campus High School: Arch Ford Educational Service Cooperative
- Core Campus Middle School: Arch Ford Educational Service Cooperative
- CTE Campus: Dawson Educational Service Cooperative
- Concurrent Credit Campus: Southeast Educational Service Cooperative
- DYS Campus: Arch Ford Educational Service Cooperative

Major Highlights of the 2023-2024 School Year - Virtual Arkansas

- Provided parent orientation webinars and informational webinars throughout the school year.

- Recognized as a national leader, including the second highest number of Quality Matters externally reviewed and quality assurance certified courses in the nation.
- Partnered with the Department of Youth Services (DYS) to provide high-quality online courses and opportunities to adjudicated youth.
- After designing, developing, and launching the pre-educator Arkansas Teacher Residency Certified Teaching Assistant Concurrent Credit pathway and partnership to provide concurrent credit pre-educator options to students throughout the state, saw a 65% growth in student enrollments within the concurrent credit program.
- Spearheaded and implemented the state effort to include a new Arkansas Military Service and Security Pathway for students interested in a military future.
- Implemented a large-scale assessment improvement initiative that aligned course curriculum and assessments with the ATLAS assessment.
- Executive Director continues to serve the role of President for the Virtual Learning Leadership Alliance (VLLA), a partnership of 20 state virtual programs dedicated to advancing quality online learning.
- Multiple Virtual Arkansas directors serve as national online learning workgroup chairs, demonstrating our commitment innovation and online learning leadership at the national level.
- Partnered with Arkansas Tech University to offer summer college courses
- Designed, developed, or enhanced 44 courses
- Designed and implemented 10 new Credit Recovery courses

Virtual Arkansas Data (Based on 2024-2025 School Year)

- Have saved Arkansas school districts over \$72,500,000 in enrollment fees over the last eleven years
- Have served over 311,000 enrollments over the last 11 years
- Virtual Arkansas Students had an 92% Pass Rate
- 12,726 Unique Arkansas Students Engaged in 29,121 Content + Teacher Enrollments
- 26,730 Credits Earned
- 78% of Virtual Arkansas teachers have a Master's degree or above
- 165 Content+Teacher courses available to students throughout Arkansas
- Concurrent Credit students Earned 9,284 College Concurrent Credit Hours
- 80% of Concurrent Credit enrollments from rural districts
- Career and Technical Education: 5,884 enrollments over two semesters
- 1,952 Computer Science enrollments
- 2,007 Advanced Placement Enrollments
- 97% of all Arkansas Rural Districts Served by Virtual Arkansas
- 60% of all Virtual Arkansas Content + Teacher Enrollments From Districts Classified as Rural
- 94% of all Arkansas public school districts served

PROGRAM: Early Childhood Special Education

FUNDING SOURCE: Federal, State, EIDT, and Local

COMPETITIVE GRANT: Yes ___ No X

RESTRICTED X **NON-RESTRICTED** ___

PARTICIPATING DISTRICTS: Corning, Jackson County, Sloan-Hendrix, Lawrence County, Piggott, Hillcrest, Marmaduke, Hoxie, Maynard, Rector, Westside

PERSONNEL: Mandy Durham, Early Childhood Coordinator, MSE in Special Education Instruction Specialist

GOAL: The Northeast Arkansas Education Cooperative Early Childhood Special Education program will provide speech/language services, developmental therapy, contracted services such as occupational therapy and physical therapy and any necessary referrals to meet the needs of children with disabilities, ages three through five, within our Cooperative districts.

PROGRAM SUMMARY: The Early Childhood Special Education program serves children in 7 Head Start locations, and 20 private daycare centers, as well as all of the ABC classrooms that are located on the 11 school campuses. Early Intervention Day Treatment (EIDT) centers are opening in and around the Jonesboro and Paragould areas. We are serving children in approximately 17 EIDT locations. Since COVID, we are having more parents attend conferences by alternate means such as phone and video. We are happy to accommodate these requests and are continuing to learn better ways to conduct these conferences that are more convenient to parents. The services we provide continue to increase inclusion into the classrooms where the children spend the greatest percentage of their day. The program continues to cooperate with the area AASEA group. This is a collaborative relationship among the Early Childhood coordinators and the LEAs for the schools that serve the preschool and school age special education population in our region.

December 1 Count: Corning-39; Hillcrest-11; Hoxie-7; Jackson County-26; Lawrence County-24; Marmaduke-12; Maynard-17; Piggott-27; Rector-33; Sloan Hendrix-13; Westside-22; Total of 231

MAJOR HIGHLIGHTS OF THE YEAR:

*We have had some great successes this year with some severely delayed children being able to have a more inclusive settings. The special education staff continues to increase the inclusion of special education services into the general education classrooms. They are doing a combination of pull out

therapy services, small group therapy in the classroom, and whole classroom activities with specific special education goals.

*The staff has met the needs of several challenges due to the different realm of disabilities and ethnic diversities that have entered our service population.

*Our staff provides development/speech screenings and hearing/vision screenings to more than 500 children per year.

*Our program also provides extended school year services in the months of June and July to the students that qualify for these services.

*We meet the needs of the students we serviced this year even with the changing requirements that we face due to external factors beyond our control.

PROGRAM: English to Speakers of Other Languages (ESOL)

FUNDING SOURCE: Arkansas Department of Education

COMPETITIVE GRANT: Yes ___ No X

RESTRICTED **NON-RESTRICTED**

PARTICIPATING DISTRICTS: Districts Statewide and Regional Educational Cooperatives: Northeast Arkansas, Crowley's Ridge, Northcentral

PERSONNEL: Tracy Leone, EL Specialist, MSE Business Technology, MA TESOL

GOAL: The Division of Elementary and Secondary Education (DESE) English Learner (EL) support program results from collaboration between the Curriculum and Instruction sections and the Student Assessment Unit of the Division of Learning Services. This program provides many resources and services to assist schools in their efforts to support ELs in developing the skills needed to communicate effectively in English both in and out of school.

PROGRAM SUMMARY: The Division of Elementary and Secondary Education (DESE) English Learner (EL) support program provides assistance through the Teacher Center Coordinators for the professional development of teachers and administrators in the implementation of the effective English for Speakers of Other Languages (ESOL) program design and delivery. The program supports assistance, upon request, with school improvement and ESOL program planning for ELs. The program also coordinates ESOL professional development training and convenes regional meetings of ESOL personnel to discuss strategies and share resources used to instruct ELs under the Arkansas Legislation.

Ms. Leone served as the regional EL specialist for the Northeast region. She provided program support, professional development, and support to the EL unit here at DESE. She also provided great support in several specific areas including course codes and instruction for educators working with English Learners. Ms. Leone maintained records and documentation for district compliance, she was the first line of support for your coordinators and was a great professional development provider. By January the EL unit had restructured, and we had no more regional specialists. Those positions were made into state support specialists.

Program: ESCWorks

Funding Source: Arkansas Educational Service Cooperatives,
Arkansas Department of Elementary and Secondary Education

Competitive Grant: No

Restricted: Non-Restricted

Participating Entities

Arch Ford Education Service Cooperative	Northcentral Arkansas Educational Service Cooperative	Wilbur D. Mills Education Service Cooperative
Arkansas River Education Service Cooperative	Northeast Arkansas Educational Cooperative	Arkansas Department of Elementary and Secondary Education
Crowley's Ridge Education Service Cooperative	Northwest Arkansas Education Service Cooperative	
Dawson Education Service Cooperative	Ozarks Unlimited Resources Education Service Cooperative	
DeQueen/Mena Education Service Cooperative	South Central Service Cooperative	
Great Rivers Education Service Cooperative	Southeast Service Cooperative	
Guy Fenter Education Service Cooperative	Southwest Arkansas Education Cooperative	

Purpose

Since 2004, the escWorks platform has been used across the state to house professional development hours required by Arkansas law to renew and retain teaching licenses and certifications. escWorks is an event management software that can schedule and track professional development offerings online. It then produces reports to quickly and clearly communicate services provided or taken over time. The software is made up of multiple online modules designed to schedule events, manage data, and most importantly, keep track of educators professional development hours. Before escWorks was purchased, there was not a consistent and logistical platform to track educator professional development in Arkansas.

Goals and Description: Since 2004, the escWorks platform has been used across the state to house professional development hours required by Arkansas law to renew and retain teaching licenses and certifications. escWorks is an event management software that can schedule and

track professional development offerings online. It then produces reports to quickly and clearly communicate services provided or taken over time. The software is made up of multiple online modules designed to schedule events, manage data, and most importantly, keep track of educators professional development hours. Before escWorks was purchased, there was not a consistent and logistical platform to track educator professional development in Arkansas. By using escWorks, Arkansas school districts and administrators can access professional development history from any educator at any location across the state. This platform allows for school districts to easily verify employment history and trainings when they are interviewing and selecting high-quality educators for open positions.

Whether an educator has taught one year or twenty, they can use the platform to see their history of professional development and courses taken over their career. They can print transcripts and reports to keep in their personnel files or personal folders. Participants also have the ability to print a certificate of completion after a training.

Additionally, after each training session, a professional development evaluation survey is sent to all participants. The surveys are identical in the platform and allow participants to share feedback about trainings that our staff or guest presenters instruct. Our cooperative staff and specialists use the data from these surveys to improve instruction and grow in methodology. We measure the level of implementation of knowledge and skills participants had before and after attending the training. The comment section at the end of the survey is another tool we use to gain personal feedback from the teachers we support. It also allows us to closely inspect our practices and delivery methods.

Each Educational Cooperative assists their local school districts with escWorks in the following ways:

- Hosting trainings for new and veteran teachers on how to use the platform.
- Input trainings, meetings, and other events that participants can select to attend for yearly professional development.
- Indicating required DESE professional development trainings for teacher license renewal in the platform.
 - Check attendance records with district administration to make sure professional development requirements were met.
 - Mark attendance in escWorks after a training is completed.
 - Answer Help Desk questions that come from users of escWorks.
 - Assist current and retired educators with obtaining records and reports.

Each of the fifteen Educational Service Cooperatives and the Arkansas Department of Education split the cost of this service each year. Approximately \$6,242.62 was paid by each entity for site maintenance and support FY24.

PROGRAM: NEA Education Cooperative HIPPY
FUNDING SOURCE: Arkansas Better Chance for School Success
COMPETITIVE GRANT: Yes X No ___
FUNDING SOURCE: Restricted X Non-Restricted ___

PARTICIPATING DISTRICTS:

- Cave City
- Corning
- Greene County Tech
- Highland
- Hillcrest
- Hoxie
- Jackson County
- Lawrence County
- Marmaduke
- Maynard
- Paragould
- Piggott
- Pocahontas
- Rector
- Sloan Hendrix

PERSONNEL:

- Shaun Kirby - HIPPY Coordinator, BS Degree
- Errin Yandell - HIPPY Home-based Educator, CDA Certificate
- Charlotte Golden - HIPPY Home-based Educator, CDA Certificate (Currently enrolled in courses)
- Ronda Underwood - HIPPY Home-based Educator, CDA Certificate (Currently enrolled in courses)

GOAL:

HIPPY aims to empower parents to lay a strong foundation for their children's future academic success. By providing educational enrichment to preschool-aged children, HIPPY offers parents support, training, and access to materials that facilitate engaging and effective learning activities. Recognizing parents as a child's first teacher, HIPPY strives to ensure every child enters kindergarten ready to thrive. Through inspiring interactions and resources, we foster parent engagement in early education, equipping them with the tools, skills, and confidence to nurture their child's learning at home. Families involved in HIPPY receive all necessary books and materials at no cost through their local programs.

PROGRAM SUMMARY:

HIPPY features a developmentally appropriate early literacy curriculum designed to enhance children's cognitive, social, emotional, and physical development. The program includes a series of straightforward educational activity packets and storybooks tailored for parents of children ages 2-5. Parents work alongside home visitors—community members often with a past HIPPY experience—who facilitate curriculum engagement through role-play and guidance. Supervised by professionally trained coordinators, home visitors empower parents to cultivate strong, meaningful connections with their children through enriching activities that prepare them for school.

The HIPPY model encompasses four core components:

1. Curriculum
2. Role Play
3. Coordinators & Home Visitors
4. Home Visits and Group Meetings

These features have been specifically crafted to encourage participation from parents who may face barriers to involvement in their children's education, addressing challenges related to education level, poverty, social isolation, and more.

MAJOR HIGHLIGHTS OF THE YEAR:

- The NEA Education Cooperative HIPPY program has successfully served 70 families this year, impacting 75 children. Participants include single or divorced parents, foster parents, and grandparents re-engaging in parenting.
- Monthly parent meetings featured activities such as:
 - Field trips to Pumpkin Hollow and Jackson Farms
 - Hands-on cooking sessions promoting healthy meal ideas
 - A Winter celebration
 - A special visit from the Cat-In-The-Hat during Dr. Seuss Month, where participants earned books through a month-long reading contest
 - Presentations from kindergarten teachers to inform parents about school expectations and ways to support their child's education
 - Tours of local fire departments focusing on fire safety education
 - A celebratory End of Year event at Ultimate Air Trampoline Park honoring the 13 graduates of the HIPPY Program
- An Advisory Team, composed of 18 representatives from the communities within the 5 service counties, convened for one meeting at the NEA Education Cooperative.

PROGRAM: Local Leads

FUNDING SOURCE: State

COMPETITIVE GRANT: Yes ___ No X

RESTRICTED ___ **NON-RESTRICTED** X

PARTICIPATING DISTRICTS: Corning, Paragould, Sloan-Hendrix, Greene County Tech, Lawrence County, Piggott, Hillcrest, Marmaduke, Pocahontas, Hoxie, Maynard, Rector

PERSONNEL:

Chrissy Sain: Local Leads,
BSE Early Childhood/Elementary Education (P-6),
MSE Early Childhood Education with Emphasis in Literacy (P-4),

GOAL:

To increase family and community awareness of early childhood education opportunities, improve provider quality through CLASS support and professional development, and expand access to resources and programs that strengthen early learning outcomes for children birth to five in the participating districts.

PROGRAM SUMMARY:

The Local Leads program provides targeted outreach, professional development, CLASS coaching, and early literacy resources to families, early childhood providers, and community partners. Through collaboration with local schools, organizations, and families, the program promotes awareness of high-quality early learning environments and offers tools and training to support educators in improving classroom interactions and school readiness outcomes.

In-School Support

- Classroom observations using CLASS across PreK, Toddler, and Infant classrooms(30)
LENA Grow coaching sessions in selected classrooms(50)
- Distribution of reading readiness checklists and assessments for 3- and 4-year-olds
- On-site and virtual coaching for teachers and directors
- Distribution of CLASS Dimensions Guides and Primer Codes
- Toddler Observer Training for Administrators

MAJOR HIGHLIGHTS OF THE YEAR:

- Launched 10-classroom LENA Grow pilot with 5 weeks of coaching support
- Increased participation in NEA Provider meetings (both in-person and virtual)
- Provided Toddler Observer Training for directors and administrators
- Partnered with A-State Marcy White to facilitate Loose Parts PD connecting play-based learning to CLASS
- Created literacy handouts and reading readiness resources for families
- Attended HIPPY Parent Meetings in six counties
- Partnered with 100 Families in Greene County for childcare resource sharing
- Expanded CLASS observations and feedback in infant, toddler, and preschool settings

VIRTUAL PROVIDER MEETINGS DELIVERED:

- Monthly NEA Cooperative Zoom Meetings
- LENA Grow virtual coaching sessions
- CLASS implementation follow-ups via Zoom
- 5+ virtual PD opportunities including Loose Parts and CLASS Portal trainings

PROFESSIONAL DEVELOPMENT FACILITATED:

- Loose Parts: Connecting Play to CLASS with A-State Marcy White
- CLASS Portal training for certified observers
- Ongoing LENA Grow coaching sessions
- Literacy readiness strategy training for teachers and families

COMMUNITY SUPPORT:

- Booths and outreach at local fairs and events
- Regularly updated NEA Local Leads Facebook page and website
- Collaboration with Parents as Teachers, HIPPY, and 100 Families
- Partnered with Greene and Lawrence County PAT programs for family outreach

PROGRAM: K-12 Math Specialist

FUNDING SOURCE: Arkansas Department of Education

COMPETITIVE GRANT: Yes X No ____

RESTRICTED X **NONRESTRICTED** ____

PARTICIPATING DISTRICTS: Corning, Greene County Tech, Hillcrest, Hoxie, Jackson County, Lawrence County, Marmaduke, Maynard, Paragould, Piggott, Pocahontas, Rector, Sloan-Hendrix, Westside Consolidated

PERSONNEL:

Kim Washburn Math Specialist MAT, NBCT-MOC

GOAL: To promote and support effective, research-based mathematics practices for all students by providing professional learning opportunities and technical assistance to teachers, math coaches, curriculum specialists, administrators, school improvement team members, instructional assistants, mathematics interventionists, parents, SPED, and Title 1 math teachers in the area of standards-based mathematics curricula, instruction, and assessment. In addition, help build pathways to high-quality instructional materials by providing a support system for teachers and leaders through year-round professional learning. Furthermore, ELEVATE Math Professional Learning is a key focus of the year centering on a balanced approach to teaching mathematics and providing coaching opportunities.

PROGRAM SUMMARY: Northeast Arkansas Education Service Cooperative, in partnership with the Arkansas Department of Education, administers the Mathematics Program for grades K-12, established by ACT 1392 of 1999 for the improvement of mathematics instruction throughout Arkansas. Assistance is provided to schools through professional learning programs, demonstration lessons, teachers observations, technical assistance, and teacher/administrator conferences in order to improve instructional strategies across the curriculum.

Professional learning opportunities offered in 2024-2025 include:

- Grades K-5 Math Fluency with Centers - with Erin Jordan
- Grades 9-12 High School Math Standards - with Erin Jordan
- Maximizing Math Achievement in K-5 Classrooms: Leveraging HQIM, Arkansas Math Standards, PLDs, and ATLAS CR Tool
- Maximizing Math Achievement in Secondary Classrooms: Leveraging HQIM, Arkansas Math Standards, PLDs, and ATLAS CR Tool
- Elevate Math Fluency: Kick-off Session
- Elevate Math Fluency: Addition/Subtraction of Whole Numbers
- Elevate Math Fluency: Multiplication/Division of Whole Numbers
- Maximizing Math Achievement in K-12 Classrooms: Leveraging HQIM, Arkansas Math Standards, & ALDs

- Utilizing ATLAS Classroom Tools

Technical assistance to Northeast Arkansas Schools:

- Observations and Coaching (TNTP, Bailey Support)
- HQIM & EdReports
- Administrator Training in Key Levers: Math Walkthrough Tool
- Analyzing and Comparing Math Standards to Achievement Level Descriptors
- Developing Common Formative Assessments
- ATLAS Portal Support - Classroom Tools, TIDE, Reporting
- Develop Math Improvement Plan for students scoring Level 1 on ATLAS
- Educational Technology Support
- Curriculum Implementation Support (Eureka Math, Illustrative Mathematics, HMH)
- Novice Teacher Support

Professional learning opportunities attended in 2024-2025 include:

- Math Unit Meetings with DESE Team
- Cognitive Coaching
- Math Lab Experience
- Arkansas Council of Teachers of Mathematics Fall 2024 Conference
- IM and IM360 Virtual and In-Person Trainings
- FBLA District II Spring Conference Judge
- Central Arkansas Math Counts Competition Scorer

PROGRAM: Mentoring

FUNDING SOURCE: Arkansas Department of Education

COMPETITIVE GRANT: Yes ___ No X

RESTRICTED FUNDING X **NONRESTRICTED FUNDING** _____

PERSONNEL:

Emily Hemme Mentoring Program Specialist MSE

Goal: To provide the support, assistance, training and encouragement to the Mentors of Novice Teachers from among the 13 participating NEAEC member school districts in order that each mentor can assist their novice in becoming an effective, knowledgeable teacher and remain in the teaching profession.

PROGRAM SUMMARY:

The Mentor Program Specialist mentored **58 Year 1, 52 Year 2, and 62 Year 3 Mentor Teachers** for a total of **172** in the school year 2023-2024.

The mentor specialist worked jointly with mentors to effectively guide novice teachers. This involved collaborative classroom walkthroughs, providing mentors with firsthand opportunities to observe and analyze teaching practices alongside the specialist. These shared experiences foster insightful discussions and the co-creation of targeted support strategies. To further enhance mentor development and ensure consistent communication, the specialist curated a monthly newsletter. This resource often includes practical tips, relevant research, upcoming professional development opportunities, and success stories, creating a connected and informed community of mentors dedicated to nurturing the growth of new educators. Multiple sessions were conducted with Novice Teachers, Year 1, Year 2, and Year 3 during the summer months. Connections were made with the new teachers when and as they were hired. During those informal meetings, the Mentor Program Specialist regularly communicated with all Novices to provide teachers with updates and gathered data to determine the individual assistance needed. Novice teachers were provided elemental training on EscWorks, TESS, and information that would be used during their upcoming year in order to be “Day One Ready” for the first day of school. The Mentor Program Specialist worked with district Points of Contact (POC’s) to maintain accurate records and share district cited needs fielding questions that might arise during the school year. POC’s were a valuable resource to facilitate communication between the Coop and districts. 100% of the Novice Teachers were assigned local mentors. Program plans for the year were outlined in an MOU and signed by district administrators.

There were **2 Novice Teacher Year 1 Days** conducted live in summer sessions and virtual sessions during the school year:

Day 1 – “Year 1 Novice Teacher Boot Camp Part 1,” July 24, 2024

Day 2 – “Year 1 Novice Teacher Boot Camp Part 2,” July 30, 2024

Novice Teacher Year 2 and 3 - July 31, 2024

Study.com licenses, **240Tutoring** licenses, and **Mometrix** texts were purchased and made available to any Novice Teacher needing praxis support.

PROGRAM: Principals Quarterly Meetings

FUNDING SOURCE: Base Funds

COMPETITIVE GRANT: Yes ___ No X

RESTRICTED FUNDING _____ **NON-RESTRICTED FUNDING** _____

PARTICIPATING DISTRICTS: Opportunity for Practicing Principals & Assistant Principals in the Northeast Arkansas Education Cooperative

PERSONNEL: Saundra Lamberson Teacher Center Coordinator

Program Summary:

Monthly Principal Meetings are hosted at the NEA Education Cooperative. Under the guidance of the Teacher Center Coordinator, updates are provided and groups have time to network on topics relevant to their job duties.

Overarching Goals:

- Networking with other principals around best practices and solving problems
- Updates from content specialists
- Updates from new or revised Laws/Rules and Regulations
- Improving knowledge and skills around curriculum, instruction, and assessment
- Staying abreast of events and opportunities relevant to their roles

In June 2024, 49 NEAEC principals attended a leadership institute. This session included Tier 1, Bullying Prevention, Third Grade Retention, Mentoring updates, Master/Lead Designations, Math Intervention Plans, Beginning Administrator Induction, and Merit Teacher Incentive Funding.

Then, in September 2024, forty four principals joined onsite to hear assessment updates from each of the content specialists, K-2 Reading Readiness Initiative, HQIM presentation from Math and Science Specialists, AI Supported Curriculum sessions, Career Readiness updates, Cambium Summative Assessment support information, and various learning opportunities.

In November 2024, thirty principals joined virtually to gather information from the content specialists about Walkthrough Tools, updates to the ELA Blueprints, Individualized Reading Plans (IRP's), K-3 ATLAS Screeners, Achievement Level Descriptors, ArAPP work session opportunities at the Co-op, the new letter grade formula, and review of the Success Ready Pathway Guide.

In December 2024, twenty five principals joined virtually to gather information from EES and Andy Sullivan through the Hot Topics calendar, access to the NEA Needs Assessment Form, updates from the content specialists, Literacy Tutoring Grants opportunities with Jill Clogston, Master/Lead Designation guidelines, and Annual Rating for Merit pay guidance.

Then, in January 2025, forty-three principals joined onsite to hear content updates from each of the specialists, ATLAS K-2 updates for mid-year guidance, Summative Testing calendar, upcoming IF meetings, and RISE dates for the summer.

In April 2025, twenty six principals joined virtually to gather information about the 2025 Principal Institute, TOY nominations, content specialist updates, Roster Verification PPT, Annual Rating PPT, DESE Merit Pay video, ArAPP work sessions, School Value Added Growth Scores, NEA Summer PD and DESE Summer PD.

Then, in May 2025, seventeen principals joined virtual to gather information about ECH Local Leads, content updates, Beginning Administrator Mentoring opportunities, PLG Bootcamps with Bailey Education Group, and ACT 304: Teacher Licensure Plans (TLP).

PROGRAM: School Psychology Specialist

FUNDING SOURCE: Local School Districts

COMPETITIVE GRANT: Yes ___ No X

RESTRICTED X **NON-RESTRICTED** ___

PARTICIPATING DISTRICTS:

Corning, Hillcrest, Lawrence County-Walnut Ridge, Marmaduke, Maynard, Piggott, Rector, Imboden County Charter School, Hoxie, and Sloan-Hendrix.

PERSONNEL:

Amber Broadway, School Psychology Specialist, Ed.S.

Micah Hightower, School Psychology Specialist, Ed.S.

Meghan Vandergriff, School Psychology Specialist, Ed.S.; Nationally Certified School Psychologist

GOAL:

The goal of the School Psychology Specialist is to help children and youth succeed academically, socially, and emotionally. To collaborate with educators, parents, and other professionals in order to create safe, healthy, and supportive learning environments for all students that strengthen connections between home and school.

PROGRAM SUMMARY:

The School Psychology Specialist performs the following educational services: assessment, consultation, prevention, and intervention. The School Psychology Specialist works with students individually and in groups, work with students with disabilities or with special talents, helps with preventing and managing crises, and helps train teachers and parents about effective teaching techniques, learning strategies, and managing behavior at home and in the classroom.

MAJOR HIGHLIGHTS OF THE YEAR:

Total Evaluations – 405 completed

Special Education/Due Process Conferences – 25

Specialized Evaluations – 25

TRAININGS:

1. National Association of School Psychology training—Ethics, Social Media, and AI Use for School Psychologists
2. Arkansas School Psychology Fall 2024 Convention—Collaboration with Parents of Students with Disabilities to Maintain and Repair Relationships
3. Arkansas School Psychology Fall 2024 Convention—Best Practices in Autism Assessment
4. Arkansas School Psychology Fall 2024 Convention—Preparing Students with Disabilities for Post-Secondary Opportunities
5. Arkansas School Psychology Fall 2024 Convention—Writing User Friendly Reports

PROGRAM: School Health Services

FUNDING SOURCE: Arkansas Master Tobacco Settlement

COMPETITIVE GRANT: Yes ___ No **X**

RESTRICTED **x** **NON-RESTRICTED** ___

PARTICIPATING DISTRICTS:

Corning, Greene Co. Tech, Hillcrest, Hoxie, Jackson Co., Lawrence Co., Marmaduke, Maynard, Paragould, Piggott, Pocahontas, Rector, Sloan Hendrix, Westside, and Imboden Charter

PERSONNEL:

Nicole Babcock, Community Health Nurse Specialist, RN

GOAL:

To provide area schools with assistance and resources that will improve student health.

PROGRAM SUMMARY:

Provide technical assistance to area schools to: Adopt tobacco-free policies and implement best practices for tobacco prevention and cessation. Adopt policies promoting and implementing best practices for nutrition, physical activity, Coordinated School Health and emerging public health issues. Establish school wellness committees and fulfill state and federal mandates. Provide Education and Training to certify school nurses to conduct mandated health screenings. Provide school nurses with professional continued education related to school health. Inform schools and communities of school health resources, available trainings and grant opportunities. Identify and evaluate training needs of school personnel and provide school health trainings to school personnel and community members.

Major Highlights of the Year:

- CPR and First Aide classes given to school districts and communities
- Stop the Bleed Programs presented to NEA Coop and Schools
- Health Ed Programs including but not limited to STD, Poison Control, Child Maltreatment, Drug Addiction, Hygiene, Texting and Driving, and Tobacco Prevention and Cessation Programs offered to all districts
- STD, Poison Control and Prescription Drug programs
- CEU programs offered to School Nurses
- PD programs offered to School Staff
- School Nurses Conferences offered to School Nurses
- Youth Mental Health First Aid classes given and offered for schools and communities

PROGRAM: K–12 Science Specialist

FUNDING SOURCE: Arkansas Department of Education

COMPETITIVE GRANT: Yes ___ No X

RESTRICTED X **NON-RESTRICTED** ___

PARTICIPATING DISTRICTS: Corning, Greene County Tech, Hillcrest, Hoxie, Jackson County, Lawrence County, Marmaduke, Maynard, Paragould, Piggott, Pocahontas, Rector, Sloan-Hendrix, Westside

PERSONNEL: Aaron Buchman, Science Specialist, BS Biology, MSE Theory and Practice

GOAL: The goal of the Science Specialist is to assist the state with job-embedded professional learning; to provide targeted technical assistance to schools identified as in need of support; and to support the implementation of content standards, assessment practices, and curriculum work. The Science Specialist will provide ongoing support for adult learning in best practices in science education. This support includes raising awareness of the AR K–12 Science Standards, the Arkansas Initiative for Instructional Materials HQIM, and providing implementation tools and techniques to achieve success.

PROGRAM SUMMARY: The office of the Science Specialist supports teachers, administrators, and schools by providing quality professional learning opportunities and ongoing site-based support in instruction, leadership, and best practices. Professional learning opportunities for science teachers focused on awareness of, transitioning to, implementation of, or sustaining work with the Arkansas K–12 Science Standards. Instructional support such as statewide science professional development (i.e., standards introduction, phenomena routines, ATLAS, assessment, and unit development) was provided to support implementation of the Arkansas K–12 Science Standards, model and provide resources for phenomena-based instruction, and incorporate ELA and Math standards. Support for science teachers was provided through on-site visits and observations to support the creation and delivery of assessment tasks, engineering, classroom management, and lesson/unit planning occurred throughout the year. Direct coaching support (as determined by the FY25 Science Program Grant Goal 2) was provided throughout the year to teachers at Lawrence Co., Paragould, Piggott, Rector, and Westside. Coaching support focused on five impact areas: structures for learning, science aligned content, science teacher instructional practices, student practice, and assessment and differentiation. Coaching supports included goal setting aligned to the impact areas, resources and guided practice with instructional strategies, and lesson internalization strategies to implement instructional changes. Professional learning opportunities for administrators focused on the Arkansas Initiative for Instructional Materials roadmap to High-Quality Professional Learning. The Science Specialist, in conjunction with the Math Specialist, provided training to building principals for the selection and implementation of High-Quality Instructional Materials with presentations provided by DESE. Follow up services were offered to schools in the adoption phase of HQIM implementation. Coaching supports

for administrators included use of the Science Leadership Walkthrough Tool to ensure proper science teaching and learning is occurring. The Innovative Partnership with Williams Baptist University was continued that brought pre-service teachers to the coop. These pre-service teachers were directly instructed in the current Science Professional Learning Continuum of PD sessions. This partnership increased awareness of the AR K–12 Science Standards among the pre-service teachers, understanding of the importance of phenomena first science, and gave practical experience through student placements and lesson development. This year the partnership expanded to include a community STEM day with the local schools and the Wings of Honor WWII and aviation museum. The Science Specialist, in partnership with Astronomers Without Borders, continues to serve as an eclipse glasses collection site and provide community service hours for member district high school students to help meet the graduation requirement. The Science Specialist provided expert advice to Hendrix College students and professor to develop video games designed to teach specific 5th grade science standards.

MAJOR HIGHLIGHTS OF THE YEAR:

- Completed MSE at ASU
- BSCS Biology: Understanding for Life facilitator training attended in January

PROFESSIONAL DEVELOPMENT DELIVERED:

- Introduction to the AR K–12 Science Standards
 - Three-Dimensional Mastery: Science Instruction for Impactful Learning
- Anchor Phenomena Routine
 - Phenomenal Teaching: Unleashing Wonder in the Science Classroom
- Assessment
 - Assessment Alchemy: Using Assessment to Drive Science Instruction
- Science Curriculum Cohorts
 - Amplify K–5, 6–8
 - BSCS Biology
 - OpenSciEd 6–8
- Selecting and Deconstructing Science Essential Standards
- Chemistry Laboratory Safety for Teachers
- HHMI BioInteractive biology supplement
- BSCS Biology: Understanding for Life HQIM 2-day training from the curriculum publisher provided to participating schools

COMMUNITY SUPPORT:

- Innovative Partnership with WBU
 - Science for Teachers
- Innovative Partnership with Hendrix
 - 5th grade science standards video games development
- Astronomers Without Borders collection site
 - Community service hours for graduation requirement

PROGRAM: Special Education

FUNDING SOURCE: State and Local School District

COMPETITIVE GRANT: Yes ___ No X

RESTRICTED X **NON-RESTRICTED** ___

PARTICIPATING DISTRICTS:

Corning, Hoxie, Maynard, Piggott, and Rector

PERSONNEL:

Dawn Sims, LEA Special Education Supervisor, Masters (plus)

GOAL:

The goal of the special education supervisor is to aid member districts in implementing state and federal requirements assuring that students with disabilities receive a free, appropriate education in the least restrictive environment.

PROGRAM SUMMARY:

The LEA Special Education Supervisor provides services to district administrators which include: budget preparation, amendments and reports, development of new programs, assistance with technical issues in ""due process"", interagency resource advertisement, and preparation for Arkansas Department of Education monitoring and in-service programs. The Special Education Supervisor provides technical assistance necessary to ensure compliance for Free Appropriate Public Education for the disabled, conducts workshops, provides in-service programs, and provides consultant services to assist special education teachers in achieving and maintaining the highest standards.

MAJOR HIGHLIGHTS OF THE YEAR:

Special Education Updates

Special Education Forms

SEAS Training

Transition 101

Novice Teacher Training

Inclusive Practices/UDL

Speech, Content 1

PROGRAM: Teacher Center (Make-N-Take)

FUNDING SOURCE: General Co-op

COMPETITIVE GRANT: Yes ___ No X

RESTRICTED ___ **NON-RESTRICTED** X

PARTICIPATING DISTRICTS: Corning, Greene Co., Hillcrest, Hoxie, Jackson Co., Lawrence Co., Marmaduke, Maynard, Piggott, Pocahontas, Paragould, Rector, Sloan Hendrix, Westside Consolidated, Local Universities, NEA Early Childhood Classroom, HIPPY programs, Area Daycares, Local businesses. Community members, numerous churches, and Civic groups

PERSONNEL:

Saundra Lamberson, Teacher Center Coordinator, MSE
Beth Orrick, Creative Materials Specialist, BS

GOAL:

Our goal is to assist teachers by providing materials and offering support to help create an esthetic classroom environment as well as manipulatives to support curriculum implementation.

PROGRAM SUMMARY:

The N.E.A. Co-op Teacher Center (M.N.T.) provides teachers a unique service to help meet the individual student's needs. Teachers have the ability to come in to use materials to create things for their classrooms. Teachers enjoy taking advantage of phone in or email orders to be made for them and ready to pick up. The center also helps by having materials readily available for teachers when they are needed.

MAJOR HIGHLIGHTS OF THE YEAR:

Orders were taken via phone, email, or in person. Teachers, COOP staff, and the community were served in a timely manner. The amount of people able to be served during this time was 1545.

Classroom materials and manipulatives were made to accommodate individual classroom needs.

Coop staff utilized materials to prepare for professional development as well as materials for teachers to utilize in the classroom.

Many flyers were created to announce upcoming local events and fund raisers.

Local hospital, nursing homes, and library utilize services and resources monthly for staff, residents, and patrons.

Individual ready to make activities were made for the ABC Preschool program.

Many recruiting flyers were created for the HIPPY program to distribute.

PROFESSIONAL DEVELOPMENT DELIVERED: Assisted in workshop. Created materials for participants to keep and activity for participants to create during workshop.

COMMUNITY SUPPORT: Many individuals, businesses, groups, churches, and clubs locally as well as from surrounding communities have been served.

PROGRAM: Teacher Center - Professional Development; Curriculum Development Assistance; Resources

FUNDING SOURCE: Base

COMPETITIVE GRANT: Yes ___ No X

RESTRICTED ___ **NON-RESTRICTED** X

PARTICIPATING DISTRICTS:

Corning, Green County Tech, Hillcrest, Hoxie, Jackson County, Lawrence County, Marmaduke, Maynard, Paragould, Piggott, Pocahontas, Rector, Sloan-Hendrix, Westside Consolidated

PERSONNEL:

Saundra Lamberson, Teacher Center Coordinator, MSE – Curriculum & Instruction, Administration
Mary Horton, Clerical, ESCWorks, ESCWorks authorized user

GOAL:

To align professional development services with district and school needs to build capacity of all adult learners in order to provide a world class education system which graduates students who are college and career ready. To provide adult learners with content knowledge and research-based instructional strategies to assist students in meeting rigorous academic standards and prepare adult learners to use various types of assessment results appropriately. Another goal is to improve the learning of all students by providing resources to support adult learning and collaboration. To provide curriculum development assistance to schools. Support schools as offer virtual/remote learning. To support school improvement initiatives generated by the ADE and enhance program integration through effective communication and technical support.

PROGRAM SUMMARY:

PD opportunities target the focus areas as outlined by the ADE, and PD sessions are offered to meet the requirements of law, as well as meeting the needs of schools based upon needs assessment survey results, Ar APP, K-2 Reading Readiness, and Classroom Management and other data from the 14 districts served. The Teacher Center Coordinator has the primary responsibility for reviewing, along with the Teacher Center Committee, the data sets from the districts in planning PD to meet the major needs of the districts

Program Summary:

Monthly Principal Meetings are hosted at the NEA Education Cooperative. Under the guidance of the Teacher Center Coordinator, updates are provided and groups have time to network on topics relevant to their job duties.

Overarching Goals:

- Networking with other principals around best practices and solving problems
- Updates from content specialists
- Updates from new or revised Laws/Rules and Regulations

- Improving knowledge and skills around curriculum, instruction, and assessment
- Staying abreast of events and opportunities relevant to their roles

In June 2024, NEAEC principals attended a leadership institute. This session included Tier 1, Bullying Prevention, Third Grade Retention, Mentoring updates, Master/Lead Designations, Math Intervention Plans, Beginning Administrator Induction, and Merit Teacher Incentive Funding.

Then, in September 2024, forty-four principals joined onsite to hear assessment updates from each of the content specialists, K-2 Reading Readiness Initiative, HQIM presentation from Math and Science Specialists, AI Supported Curriculum sessions, Career Readiness updates, Cambium Summative Assessment support information, and various learning opportunities.

In November 2024, thirty principals joined virtually to gather information from the content specialists about Walkthrough Tools, updates to the ELA Blueprints, Individualized Reading Plans (IRP's), K-3 ATLAS Screeners, Achievement Level Descriptors, ArAPP work session opportunities at the Co-op, the new letter grade formula, and review of the Success Ready Pathway Guide.

In December 2024, twenty five principals joined virtually to gather information from EES and Andy Sullivan through the Hot Topics calendar, access to the NEA Needs Assessment Form, updates from the content specialists, Literacy Tutoring Grants opportunities with Jill Clogston, Master/Lead Designation guidelines, and Annual Rating for Merit pay guidance.

Then, in January 2025, forty three principals joined onsite to hear content updates from each of the specialists, ATLAS K-2 updates for mid-year guidance, Summative Testing calendar, upcoming IF meetings, and RISE dates for the summer.

In April 2025, twenty six principals joined virtually to gather information about the 2025 Principal Institute, TOY nominations, content specialist updates, Roster Verification PPT, Annual Rating PPT, DESE Merit Pay video, ArAPP work sessions, School Value Added Growth Scores, NEA Summer PD and DESE Summer PD.

Then, in May 2025, seventeen principals joined virtual to gather information about ECH Local Leads, content updates, Beginning Administrator Mentoring opportunities, PLG Bootcamps with Bailey Education Group, and ACT 304: Teacher Licensure Plans (TLP).

MAJOR HIGHLIGHTS OF THE YEAR:

- *Principal Sessions
- *Summer Leadership Institutes
- *School Board Member Training
- *ATLAS Opportunities
- *Monthly Board Updates

PROGRAM: Technology Coordinator

FUNDING SOURCE: 2362 (Technology Coordinator)

COMPETITIVE GRANT: Yes ___ No X

RESTRICTED X **NON-RESTRICTED** ___

PARTICIPATING DISTRICTS: Corning, Greene County Tech., Hillcrest, Hoxie, Jackson County, Lawrence County, Marmaduke, Maynard, Paragould, Piggott, Pocahontas, Rector, Sloan-Hendrix, Westside

PERSONNEL: Bruce Watson, Technology Coordinator, Computer Science (BS)

GOAL: The Technology Center Program grant promotes the coordination of technology services to local school districts and provides relevant technology professional development for area educators and Northeast Arkansas Education Cooperative staff.

PROGRAM SUMMARY: The NEAEC Technology Coordinator maintained a stable network that allowed all workshops (Cooperative-wide: both Face-to-Face and Virtual) to be conducted successfully for the year 2024-2025. The NEAEC Technology Coordinator planned and conducted 8 District Technology Coordinator meetings and State informational workshops during the year. The NEAEC Technology Coordinator attended weekly State Cooperative Technology Coordinator meetings either in person or via synchronous ZOOM meetings. Upon request, the NEAEC TC prepared the ACT Aspire district data graphs by subject for schools. The NEAEC TC provided ongoing support to the NEAEC Content Specialists in various capacities. The NEAEC assists all NEAEC personnel in technology matters such as printer maintenance, software & hardware purchases, software personnel training, etc. The NEAEC TC continues to create and sustain existing listservs for Cooperative, District, and State entities. The NEAEC TC disseminates the latest information and training opportunities to member NEA Co-op school districts on the topic of Cybersecurity.

MAJOR HIGHLIGHTS OF THE YEAR:

- Provided tech support for Superintendents Institute (2024)
- Attended the ACOT (Arkansas Conference of Technology) (2024)
- Attended the TEL-AR Conference (2025)
- Attended the White River Services Cybersecurity Summit (2025)
- Attended the CIRT (Cyber Incident Response Team) Experience 2-Day Workshop (2025)
- Provided Act 504 K12 Cybersecurity Policy Regional Workshop Series for District Techs (2025)

PROFESSIONAL DEVELOPMENT DELIVERED:

One-on-One tech trainings for NEA Education Cooperative Specialists and staff throughout the school year.

COMMUNITY SUPPORT: Tech support for the Visual and Performing Arts Festival 2025

Collaboration with State Education Service Cooperatives/Tailgate Topics: Just enough to PREP you for the game of Leadership Administrator Support Zoom Meetings

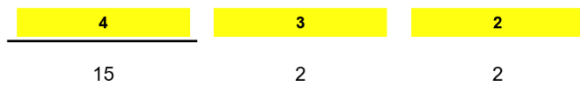
Competitive Grant: Yes No

In an effort to provide additional support to building administrator’s across the state, the Educational Cooperative Teacher Center Coordinators partnered together to offer virtual support on topics that we felt could assist in understanding new laws, DESE requirements, and other topics relevant to education and their positions. These sessions were ongoing, continuous support for aspiring and existing building leaders, assistant principals, and deans of students. Sessions were held on the last Tuesday each month (except November and December). The topics were presenter driven and were selected to help assist leadership. These sessions were intended to build the capacity of school leadership, offer support and continued learning, and establish network opportunities around district and state leaders. Each session lasted for a maximum time one hour or less, was recorded for flexibility, and offered feedback and questions through Zoom Chat and Mentimeter. Recordings were available by request, so that we could track interest and needs of our districts and cooperative areas.

From the data collected from participants, requests of recordings, and which co-ops had participation from their educators, we were able to determine which sessions were more beneficial for our leaders. However, we found that administrators from around the state benefitted in some capacity from these sessions.

In addition, in looking at the participant evaluations from each session, we found that we were assisting our leaders in gaining knowledge on topics. For example, after the session on Acceleration, the knowledge of level of implementation grew. See data below.

5. My level of implementation before this workshop was:



6. My planned level of implementation after this workshop will be:



Below are the sessions listed, live attendance, and requests for session recordings.

Northeast Arkansas Education Cooperative

DATE: May 1, 2025



Special Projects...

Communities of Practice (CoP)

Description:

Building Communities of Practice (CoP) is focused around Identifying Learning Loss and Accelerating Learning using High-Quality Instructional Materials (HQIM). DESE, in partnership with a national partner, will bring together groups of Arkansas system leaders (district and school teams). The Community of Practice will explore the leadership practices necessary to implement math and/or literacy instruction and learning supports that meet the moment, while staying focused on long-term recovery and acceleration goals.

The CoP includes a series of sessions that includes research and evidence-based strategies to address and plan for the acceleration of learning using HQIM.

Grantee will select vendors from those approved by Rivet Education to contract with for professional services to engage in content coaching, with emphasis on HQIM.

Act 1082 Support

While literacy coaching is a part of the ESC literacy specialists' work, it is just one of many workstreams for these individuals. As a result, districts receive varying intensity of support from literacy specialists, based on their ADE Progressive Levels of Support classification, and the fact that not every school that needs support receives it. Arkansas has 5 levels of support (General, Collaborative, Coordinated, Directed, and Intensive) determined, in part, by a district's student reading outcomes on the state summative assessment. Arkansas literacy specialists support only Levels 3-5:

- **Level 5 - Intensive Support:** ADE literacy specialists conduct weekly site-visits to provide coaching and feedback in schools. Arkansas currently has five districts at this level. The percent of students that met the ACT Aspire readiness benchmark in these districts is just 13.86%, compared to a statewide average of 35%. Of the Level 5 districts, 3 have adopted approved HQIM in K-3, 1 has adopted approved HQIM in K-2 but not grade three, and one district has not adopted HQIM.

- **Level 4 - Directed Support:** ESC literacy specialists provide support to districts in their region including coaching teachers, model lessons, walkthroughs with principals and professional development around the Science of Reading. Arkansas has 37 districts that receive this support. The percent of students that met the ACT Aspire readiness benchmark of these districts is 21.95%. Of the districts, all but one has adopted approved HQIM in K-3.

- **Level 3 - Coordinated Support:** ESC literacy specialists provide support to districts in their region including coaching teachers, model lessons, walkthroughs with principals and professional development around the Science of Reading. Arkansas has 67 districts that receive this support. The percent of students that met the ACT Aspire readiness benchmark of these districts is 27.91%. Of the Level 3 districts, 29 have adopted approved HQIM in K-2, 7 have partially adopted HQIM in K-3, and 1 has not adopted HQIM in K-3.

Act 1082 is designed to provide specific levels of support to public school districts based on reading scores.

The goals of this support include helping schools deploy more powerful strategies, use resources more productively, and analyze the curriculum that is used. To that end, both Level 3 and Level 4 schools meet periodically with the Public-School Program Advisor from the DESE and the co-op team either virtually or in-person. Level 3 schools are required to meet once every nine weeks and Level 4 schools meet monthly. During these meetings a spreadsheet is reviewed that includes the topics: Literacy Curriculum, Assessments, Science of Reading, Dyslexia, and Writing Revolution. This spreadsheet is a living document that all stakeholders can update as actions are taken in support of any of the given areas.

Educational Services for the Visually Impaired collaborates with school districts, parents, and communities to provide support that empowers them to remove educational and environmental barriers and to create solutions that foster independence for all students with visual impairments.

AR App

The ESCs have developed a series of sessions to support the gradual completion of the AR App. This helped schools differentiate the process and produce a high-quality application. The timeline of this work began in January and concluded in May. Each month a different component of the AR App was the focus. The process was designed to support the comprehensive needs assessment, data collection, team formation, creation of SMART goals, and the development of goals that align with district data and LEARNS, all of which will be implemented through the district's strategic plan.

The two main purposes of this work were to support districts in high-quality completion of the AR App and the production of the district's strategic plan and to support the Arkansas Department of Education in the approval process as a result of high-quality submissions.

Each ESC provided a series of trainings throughout the Spring semester following the below imaged timeline.



In addition to this work in support of the AR App, ESCs worked collaboratively on each of the following priorities: Safety, Mental Health, and Accelerated Learning. A Safety Summit is being hosted by Guy Fenter Education Service Cooperative July 8-9, 2025 in partnership with the Criminal Justice Institute and the Arkansas Department of Education’s Division of Elementary and Secondary Education.

Esc WORKS

Project Name: Collaboration with State Education Service Cooperatives/escWorks
Competitive Grant: No

Goals and Description: Since 2004, the escWorks platform has been used across the state to house professional development hours required by Arkansas law to renew and retain teaching

licenses and certifications. escWorks is an event management software that can schedule and track professional development offerings online. It then produces reports to quickly and clearly communicate services provided or taken over time. The software is made up of multiple online modules designed to schedule events, manage data, and most importantly, keep track of educator's professional development hours. Before escWorks was purchased, there was not a consistent and logistical platform to track educator professional development in Arkansas. By using escWorks, Arkansas school districts and administrators can access professional development history from any educator at any location across the state. This platform allows for school districts to easily verify employment history and trainings when they are interviewing and selecting high-quality educators for open positions.

Whether an educator has taught one year or twenty, they can use the platform to see their history of professional development and courses taken over their career. They can print transcripts and reports to keep in their personnel files or personal folders. Participants also have the ability to print a certificate of completion after a training.

Additionally, after each training session, a professional development evaluation survey is sent to all participants. The surveys are identical in the platform and allow participants to share feedback about trainings that our staff or guest presenters instruct. Our cooperative staff and specialists use the data from these surveys to improve instruction and grow in methodology. We measure the level of implementation of knowledge and skills participants had before and after attending the training. The comment section at the end of the survey is another tool we use to gain personal feedback from the teachers we support. It also allows us to closely inspect our practices and delivery methods.

Each Educational Cooperative assists their local school districts with escWorks in the following ways:

- Hosting trainings for new and veteran teachers on how to use the platform.
- Input trainings, meetings, and other events that participants can select to attend for yearly professional development.
- Indicating required DESE professional development trainings for teacher license renewal in the platform.
- Check attendance records with district administration to make sure professional development requirements were met.
- Mark attendance in escWorks after a training is completed.
- Answer Help Desk questions that come from users of escWorks.
- Assist current and retired educators with obtaining records and reports.

Each of the fifteen Educational Service Cooperatives and the Arkansas Department of Education split the cost of this service each year. Approximately \$6,242.62 was paid by each entity for site maintenance and support FY24.

TAILGATE TOPICS ADMINISTRATOR SUPPORT FY 25-25

Tailgate Topics and Presenters	Number of Session Attendees	Number of Recordings Requested as of May 15, 2025	Cooperatives/ERZ that Attended/Requested Recordings
<p>Tailgate Topics Meeting #1 August 27th 4:00-5:00 <u>Merit Pay: What to know and do (including talking to staff)</u> Dr. Harold Jeffcoat, Van Buren and Andy Sullivan, DESE</p>	31	9	ARESC DAWSON ERZ-Laura Wilson GUY FENTER NE NWAESC SCSC SEARK
<p>Tailgate Topics Meeting #2 September 24th 4:00-5:00 <u>Cell-Phone Free Schools: Policy, Process, and How it's going!</u> Skipper Ward, Superintendent at Magnolia School District and Richard McMillan, Principal at Fouke High School</p>	13	11	ARESC DAWSON GUY FENTER NE NWAESC SCSC SEARK
<p>Tailgate Topics Meeting #3 October 29th 4:00-5:00 <u>How do I spend 50% of my time focused on instruction?</u> April McKinley, Meadow Park Elementary, North Little Rock School District Meredith McCormack, Malvern Elementary Lisa Engebretson, Mountain Pine Elementary</p>	24	10	ARESC DAWSON NE NWAESC SCSC SEARK

Kiley Simms, Hot Springs High School			
Tailgate Topics Meeting #4 January 28th 4:00-5:00 <u>Acceleration: What it means for your Students, Leaders, and Counselors</u> Stacy Smith, Deputy Commissioner, ADE Dr. Kiffany Pride, Assistant Commissioner of Learning Services, ADE	83	71 *Additionally shared as part of the statewide AR APP Support throughout the state	ARCH FORD ARESC DAWSON DEQUEEN MENA CROWLEY’S RIDGE ERZ-Roger Guevara GUY FENTER GREAT RIVERS NORTH CENTRAL NE NWAESC OUR SCSC SEARK SOUTHWEST WILBUR MILLS
Tailgate Topics Meeting #5 February 25th 4:00-5:00 <u>ANNUAL RATINGS: Don't get left behind!</u> Join Andy Sullivan as he shares the latest updates and what you need to do to make sure you have all your tasks completed for any staff to be eligible for merit pay. Have your questions ready to go!	45	96	ARCH FORD ARESC CROWLEY’s RIDGE DAWSON DEQUEEN MENA GREAT RIVERS GUY FENTER NORTH CENTRAL NE NWAESC OUR SCSC SEARK SOUTH WEST WILBUR MILLS
Tailgate Topics Meeting #6 March 18th 4:00-5:00 <u>What is happening with Behavior?</u> Arkansas Behavior Support Specialists Dr. Sheila Smith, Sonia Hartsfield	16	1	ARESC DAWSON GREAT RIVERS NE NWAESC SCSC SEARK
TOTAL SESSIONS: 6	TOTAL PARTICIPANTS: 212	TOTAL RECORDINGS REQUESTED: 198	*Approximate Number of Individuals Reached: 410

			This does not account for recording shown in group settings
--	--	--	---

Northeast Arkansas Education Cooperative

DATE: May 1, 2025



Professional Development Activities...

Summary Attended

Printed Date: 6/30/2025

Last modified: 6/30/2025

Report Description:

Count of attended participants grouped by session for a given time period or for a given owner.

Search Parameter: **Start Date:** 2024-06-01-00-00-00
Start Date Less Than: 2025-05-31-00-00-00
Events Entered By LEA Number: 3820
ESC Co- op Events Only: on

Session	#Sessions	Credits	Districts	#Attended
520119				
NEA - High School Computer Science Certification and Preparation				
520119 - Jul 22, 23, 24, 25, 26, 2024 8:30 am - 3:30 pm		270	9	9
K-12 Content				
520127				
NEA - Middle School Intro To Coding: Learn Text-based Code				
520127 - Jun 26, 27, 2024 8:30 am - 3:30 pm		84	6	7
K-12 Content				
520398				
NEA - VIRTUAL - PD in your PJs (June 2024)				
520398 - Jun 10, 2024 9:00 am - 3:00 pm		103	8	18
Educational Technology,K-12 Content				
520407				
NEA - VIRTUAL - PD in your PJs (July 2024)				
520407 - Jul 15, 2024 9:00 am - 3:00 pm		138	13	23
Educational Technology,K-12 Content				
520447				
NEA - Computer Science: Teaching K-4				
520447 - Jun 24, 2024 8:30 am - 3:30 pm		18	2	2
K-12 Content				
520869				
NEA – Do the IEP Basics Better – I “Love” the Basics				
520869 - Jul 23, 2024 8:30 am - 3:30 pm		264	11	44
Curriculum Alignment,Instructional Leadership,Non-Curricular				
521256				
NEA - Business Intelligence - High School CS/Business Professional Development				
521256 - Jun 24, 25, 2024 8:30 am - 3:30 pm		132	12	12
K-12 Content				
521633				

Summary Attended

Printed Date: 6/30/2025

Last modified: 6/30/2025

Session	#Sessions	Credits	Districts	#Attended
NEA - Faux Stain Glass 521633 - Jun 24, 2024 8:30 am - 3:30 pm		78	7	12
<hr/>				
521759 NEA -TOOLS AND TECH: MAKERS EDITION 521759 - Jun 27, 2024 8:30 am - 3:30 pm		48	5	8
Instructional Strategies,Non-Curricular				
522252 NEA - So Many Picture Books, So Little Time, 522252 - Jul 22, 2024 8:30 am - 3:30 pm		150	13	25
Arkansas Content Standards Frameworks,Instructional Strategies				
522255 NEA - Working with Difficult Students: Motivational Interviewing for School Professionals 522255 - Jul 16, 2024 8:30 am - 3:30 pm		24	3	4
Classroom Management,Non-Curricular,Student Health and Wellness				
522350 NEA - Tier 1 and Legislative Update 522350 - Jul 9, 2024 9:00 am - 12:00 pm		45	9	15
Fiscal Management				
522368 NEA - Elevate Math Fluency 522368 - Jun 14, 2024 8:30 am - 3:30 pm		84	11	14
<hr/>				
522617 NEA - Antecedent Based and Targeted Behavior Interventions 522617 - Jun 11, 2024 8:30 am - 3:30 pm		72	8	12
Classroom Management				
522649 NEA - BREAK-AWAY from Behavior - MAKE & TAKE! 522649 - Jun 12, 2024 8:30 am - 3:30 pm		90	8	15
Classroom Management				
522659 NEA - BREAK-AWAY from Behavior - MAKE & TAKE! 522659 - Jul 16, 2024 8:30 am - 3:30 pm		66	6	11
Classroom Management				
523682 NEA - Tools for Teaching High School Economics + Personal Finance (Grades 9-12) 523682 - Jul 29, 2024 8:30 am - 3:30 pm		84	8	14
Arkansas Content Standards Frameworks,Instructional Strategies,K-12 Content				

Summary Attended

Printed Date: 6/30/2025

Last modified: 6/30/2025

Session	#Sessions	Credits	Districts	#Attended
523739				
NEA – Virtual Wellness Chair/Committee Professional Development				
523739 - Jun 12, 2024 9:00 am - 12:00 pm		30	6	10
Instructional Leadership,Instructional Strategies,K-12 Content,Mentoring Coaching,Student Health and Wellness				
523936				
NEA - Transitioning to Success: How to develop compliant transition plans for positive futures				
523936 - Jun 27, 2024 8:30 am - 11:30 am		30	7	10
Assessment,Instructional Strategies				
523939				
NEA - Expect, Engage, Empower - Planning for Inclusion in Transition				
523939 - Jun 27, 2024 12:30 pm - 3:30 pm		31	8	11
Assessment,Instructional Strategies				
523943				
NEA - Speech Content 1				
523943 - Jun 13, 2024 8:30 am - 3:30 pm		96	8	16
Instructional Strategies,K-12 Content				
524072				
NEA – SPED FORMS, EXAMPLES & MONITORING				
524072 - Jun 25, 2024 8:30 am - 3:30 pm		162	7	26
Private Events,Supervision				
524084				
NEA - Book Talks: Let's Talk About Some Great Books				
524084 - Jun 10, 2024 12:30 pm - 3:30 pm		51	10	17
Instructional Strategies				
524088				
NEA - Applying Literacy Strategies Using ChatGPT and Other AI Sites				
524088 - Jun 10, 2024 8:30 am - 11:30 am		51	9	17
Arkansas Content Standards Frameworks,Instructional Strategies				
524091				
NEA – Bad Boy Mower Industry Tour				
524091 - Jul 24, 2024 9:00 am - 3:00 pm		72	9	12
Building a Collaborative Learning Community,Educational Technology				
524099				
NEA – Survey of Business				
524099 - Jul 31, 2024 8:30 am - 3:30 pm		126	16	20
Instructional Strategies				
524114				

Summary Attended

Printed Date: 6/30/2025

Last modified: 6/30/2025

Session	#Sessions	Credits	Districts	#Attended
NEA – Discovering Careers: Integrating Job Skills in Your Classroom 524114 - Jul 22, 2024 8:30 am - 3:30 pm		84	7	12
Arkansas Content Standards Frameworks,Instructional Strategies				
524153				
NEA - Youth Mental Health First Aid 524153 - Jun 26, 2024 8:30 am - 3:30 pm		72	8	12
Non-Curricular,Student Health and Wellness				
524155				
NEA – Enroute Software for Dynatorch CNC Machines 524155 - Jun 6, 2024 8:30 am - 3:30 pm		78	9	12
Educational Technology,Instructional Strategies				
525292				
NEA - Explore the Arkansas 3-5 Math Standards 525292 - Jun 26, 2024 8:30 am - 3:30 pm		66	8	10
525295				
NEA - Explore the Arkansas 6-8 Math Standards 525295 - Jun 27, 2024 8:30 am - 3:30 pm		30	4	4
525451				
NEA - Social Media: What do Educators need to Know to Protect Themselves Online? 525451 - Jul 18, 2024 12:30 pm - 3:30 pm		30	5	10
Educational Technology,Non-Curricular				
525564				
NEA - Keeping Kids Safe Online 525564 - Jul 18, 2024 8:30 am - 11:30 am		45	7	15
Educational Technology,Non-Curricular				
525568				
NEA - CPR/First Aid for Educators & School Staff 525568 - Jun 3, 2024 8:30 am - 12:00 pm		32	8	9
CPR				
525588				
NEA - CPR for School Nurses and CPR Instructors 525588 - Jun 13, 2024 8:30 am - 12:30 pm		12	3	3
525692				
NEA – Communities of Practice – Boot Camp 525692 - Jun 4, 5, 6, 2024 8:30 am - 3:30 pm		1722	9	97
Arkansas Content Standards Frameworks,Assessment,Curriculum Alignment,Instructional Strategies				

Summary Attended

Printed Date: 6/30/2025

Last modified: 6/30/2025

Session	#Sessions	Credits	Districts	#Attended
525702				
NEA – Communities of Practice – Boot Camp				
525702 - Jun 18, 19, 20, 2024 8:30 am - 3:30 pm		642	7	38
Arkansas Content Standards Frameworks,Assessment,Curriculum Alignment,Instructional Strategies				
525706				
NEA – Agricultural Experience Tracker (AET)				
525706 - Jul 25, 2024 8:30 am - 3:30 pm		102	13	16
Advocacy Leadership,Building a Collaborative Learning Community,Data Disaggregation				
525820				
NEA – CTE Updates for Agriculture Teachers in NEA Consortium				
525820 - Jul 8, 2024 8:30 am - 3:30 pm		126	14	20
Data Disaggregation				
525826				
NEA – CTE Updates for Business Teachers in NEA Consortium				
525826 - Jul 9, 2024 8:30 am - 3:30 pm		156	14	25
Data Disaggregation				
525836				
NEA – CTE Updates for FAC Teachers in NEA Consortium				
525836 - Jul 10, 2024 8:30 am - 3:30 pm		30	4	4
Data Disaggregation				
525846				
NEA - Game Development and Design for Year 1 - High School CS Professional Development				
525846 - Jun 26, 27, 2024 8:30 am - 3:30 pm		84	6	7
K-12 Content				
525848				
NEA - “ Photoscape Portraits”				
525848 - Jun 6, 2024 8:30 am - 3:30 pm		102	9	16
K-12 Content				
525850				
NEA - Grades K-5 Math Fluency with Centers				
525850 - Jul 15, 2024 8:30 am - 3:30 pm		96	8	16
525918				
NEA - Grades 9-12 High School Math Standards				
525918 - Jul 18, 2024 8:30 am - 3:30 pm		78	7	11
Instructional Strategies				
526100				

Summary Attended

Printed Date: 6/30/2025

Last modified: 6/30/2025

Session	#Sessions	Credits	Districts	#Attended
NEA - Teaching about the Holocaust 526100 - Jun 12, 2024 8:30 am - 3:30 pm		96	8	16
Instructional Strategies,K-12 Content				
526301				
NEA - Foundations of Literacy Instruction for Students with Extensive Support Needs 526301 - Jun 13, 2024 8:30 am - 3:30 pm		102	8	17
Arkansas Content Standards Frameworks,Instructional Strategies				
526930				
NEA - Youth Mental Health First Aid 526930 - Jul 15, 2024 8:30 am - 3:30 pm		60	8	10
Non-Curricular,Student Health and Wellness				
527026				
NEA – Canva-Online Graphic Design Platform 527026 - Jul 23, 2024 8:30 am - 3:30 pm		108	9	17
Educational Technology				
527358				
NEA – SPED UPDATES 2024 527358 - Jun 24, 2024 8:30 am - 3:30 pm		168	8	27
Supervision				
527403				
NEA – Communities of Practice – Boot Camp 527403 - Jun 4, 5, 6, 2024 8:30 am - 3:30 pm		1464	8	90
Arkansas Content Standards Frameworks,Assessment,Curriculum Alignment,Instructional Strategies				
527420				
NEA - Back to School Nurse Workshop 527420 - Aug 7, 2024 8:30 am - 3:30 pm		156	11	26
Non-Curricular				
527450				
NEA - New School Nurse Training 527450 - Sep 12, 2024 8:30 am - 3:30 pm		24	3	4
Non-Curricular				
527493				
NEA - Effective ESOL Programming: ESOL Program Guide: Sections 4-6 527493 - Jul 2, 2024 9:00 am - 12:00 pm		6	2	2
Advocacy Leadership				
527615				
NEA - CPR/First Aid for Educators & School Staff 527615 - Jul 18, 2024 8:30 am - 12:00 pm		28	5	7
CPR				

Summary Attended

Printed Date: 6/30/2025

Last modified: 6/30/2025

Session	#Sessions	Credits	Districts	#Attended
527780				
NEA - APSCN Finance				
527780 - Jun 3, 2024 9:30 am - 3:30 pm		45	6	9
<hr/>				
527787				
NEA - Cycle 9				
527787 - Aug 9, 2024 9:30 am - 3:30 pm		30	6	6
<hr/>				
527848				
NEA - Mandated Report Training				
527848 - Aug 8, 2024 8:30 am - 12:00 pm		21	5	6
Non-Curricular, Student Health and Wellness				
<hr/>				
527853				
NEA - Using HHMI BioInteractive Resources and the Science Practices to Support Student Understanding of Molecular and Classical Genetics				
527853 - Jun 25, 2024 8:30 am - 3:30 pm		66	8	9
K-12 Content				
<hr/>				
527857				
NEA - New School Nurse Training				
527857 - Jul 11, 2024 8:30 am - 3:30 pm		18	2	3
Non-Curricular				
<hr/>				
527893				
NEA - Cognitive Coaching Day 1 and Day 2				
527893 - Aug 1, 2, 2024 8:30 am - 4:00 pm		438	8	37
Cognitive Research, Mentoring Coaching				
<hr/>				
527952				
NEA - eSchool New User Training				
527952 - Jul 29, 2024 8:30 am - 3:30 pm		70	7	14
Non-Curricular				
<hr/>				
527962				
NEA - eSchool Registration Training				
527962 - Jul 30, 2024 9:00 am - 3:30 pm		70	5	14
Non-Curricular				
<hr/>				
527993				
NEA - eSchool Discipline Training (Afternoon Session)				
527993 - Jul 31, 2024 1:00 pm - 4:00 pm		30	3	10
Non-Curricular				
<hr/>				
528125				

Summary Attended

Printed Date: 6/30/2025 Last modified: 6/30/2025

Session	#Sessions	Credits	Districts	#Attended
NEA - Personal Care Training 528125 - Aug 5, 2024 9:00 am - 3:30 pm		126	8	21
Non-Curricular				
528217				
NEA - CPR for School Nurses and CPR Instructors 528217 - Jul 25, 2024 8:30 am - 12:30 pm		4	1	1
528336				
NEA - eSchool Medical Training 528336 - Aug 27, 2024 9:00 am - 3:00 pm		25	4	5
Non-Curricular				
528749				
NEA - Resiliency for All/QPR 528749 - Jul 17, 2024 8:30 am - 12:00 pm		7	2	2
Non-Curricular, Student Health and Wellness				
528775				
NEA – K-2 Day 1 Science of Reading 528775 - Jul 23, 2024 8:30 am - 3:30 pm		204	16	33
Arkansas Content Standards Frameworks, Building a Collaborative Learning Community, Instructional Strategies				
528785				
NEA – K-2 Day 2 Oral Language & Phonological Awareness 528785 - Jul 24, 2024 8:30 am - 3:30 pm		192	16	32
Arkansas Content Standards Frameworks, Building a Collaborative Learning Community, Instructional Strategies				
528808				
NEA – RISE K-2 Day 3 Phonics 528808 - Jul 25, 2024 8:30 am - 3:30 pm		192	15	32
Arkansas Content Standards Frameworks, Building a Collaborative Learning Community, Instructional Strategies				
528941				
NEA – RISE k-2 Day 4 Fluency 528941 - Aug 5, 2024 8:30 am - 3:30 pm		90	7	15
Arkansas Content Standards Frameworks, Building a Collaborative Learning Community, Instructional Strategies				
528946				
NEA – RISE K-2 Day 5 Oral Language, Vocabulary & Morphology 528946 - Aug 6, 2024 8:30 am - 3:30 pm		90	7	15
Arkansas Content Standards Frameworks, Building a Collaborative Learning Community, Instructional Strategies				
528948				
NEA – RISE K-2 Day 6 Comprehension 528948 - Aug 7, 2024 8:30 am - 3:30 pm		78	5	13
Arkansas Content Standards Frameworks, Building a Collaborative Learning Community, Instructional Strategies				

Summary Attended

Printed Date: 6/30/2025

Last modified: 6/30/2025

Session	#Sessions	Credits	Districts	#Attended
528952				
NEA – Three-Dimensional Mastery: Science Instruction for Impactful Learning				
528952 - Jun 24, 2024 8:30 am - 3:30 pm		30	4	4
Arkansas Content Standards Frameworks,K-12 Content				
528956				
NEA - Science Curriculum Cohort: OpenSciEd 6–8				
528956 - Jul 22, 23, 2024 8:30 am - 3:30 pm		48	3	3
Arkansas Content Standards Frameworks,Assessment,Curriculum Alignment,Instructional Strategies,K-12 Content				
528959				
NEA – Science Curriculum Cohort: Amplify				
528959 - Jul 8, 9, 2024 8:30 am - 3:30 pm		36	2	3
Arkansas Content Standards Frameworks,Assessment,Curriculum Alignment,K-12 Content				
529069				
NEA - Assessment Alchemy: Using Assessment to Drive Science Instruction				
529069 - Jul 10, 11, 2024 8:30 am - 3:30 pm		54	3	4
Arkansas Content Standards Frameworks,Assessment,K-12 Content				
529157				
NEA – Science Curriculum Cohort: BSCS Biology				
529157 - Jul 29, 30, 2024 8:30 am - 3:30 pm		54	3	4
Arkansas Content Standards Frameworks,Assessment,Curriculum Alignment,Instructional Strategies,K-12 Content				
529162				
NEA – Selecting and Deconstructing Science Essential Standards				
529162 - Jul 24, 25, 2024 8:30 am - 3:30 pm		72	5	7
Arkansas Content Standards Frameworks,Assessment,Curriculum Alignment,K-12 Content				
529167				
NEA – ADE Medicaid Billing Workshop				
529167 - Jul 15, 2024 8:30 am - 3:30 pm		114	12	19
Non-Curricular				
529853				
NEA – Principal Institute				
529853 - Jun 17, 2024 8:00 am - 3:30 pm		324	17	52
Advocacy Leadership,Bullying,Data Disaggregation,Fiscal Management,Instructional Leadership,Supervision				
529890				
NEA - Tip & Tricks for Teachers of Secondary Gifted Students				
529890 - Jun 20, 2024 8:30 am - 11:30 am		33	4	10
Curriculum Alignment,K-12 Content				
530049				

Summary Attended

Printed Date: 6/30/2025

Last modified: 6/30/2025

Session	#Sessions	Credits	Districts	#Attended
NEA - Formative Assessment and Standards Based Grading				
530049 - Jul 15, 2024 8:30 am - 3:30 pm		36	4	6
Arkansas Content Standards Frameworks,Assessment,Building a Collaborative Learning Community,Curriculum Alignment,Systemic Change Process				
530501				
NEA - eSchool Attendance Training (Morning Session)				
530501 - Jul 31, 2024 9:00 am - 12:00 pm		30	4	10
530817				
NEA - Strategic Reading Day 1 & 2				
530817 - Jul 23, 24, 2024 8:30 am - 3:30 pm		204	8	18
Arkansas Content Standards Frameworks,Curriculum Alignment,Instructional Strategies				
531110				
NEA - Inclusive Education/Meaningful Access Training of Trainers, Days 3 & 4				
531110 - Nov 6, 7, 2024 8:30 am - 3:30 pm		456	5	40
Building a Collaborative Learning Community,Instructional Strategies,Mentoring Coaching				
531112				
NEA - Inclusive Education/Meaningful Access Training of Trainers, Days 5 & 6				
531112 - Feb 24, 25, 2025 8:30 am - 3:30 pm		366	4	33
Building a Collaborative Learning Community,Instructional Strategies,Mentoring Coaching				
532409				
NEA - Athletic Coaching Institute				
532409 - Jun 14, 2024 8:00 am - 3:30 pm		54	7	9
Health Physical Activity				
532701				
NEA - CLASS Primer				
532701 - Jul 30, 2024 12:00 pm - 3:00 pm		57	2	18
Instructional Strategies				
532726				
NEA - CLASS Primer				
532726 - Jul 25, 2024 8:30 am - 11:00 am		11	1	2
Instructional Strategies				
533272				
NEA - CPR for Preschool Personnel				
533272 - Jul 29, 2024 8:00 am - 12:00 pm		64	4	16
CPR				
533274				

Summary Attended

Printed Date: 6/30/2025

Last modified: 6/30/2025

Session	#Sessions	Credits	Districts	#Attended
NEA – Early Childhood Updates for floaters, paraprofessionals, and teachers 533274 - Jul 29, 2024 1:00 pm - 3:00 pm		94	9	47
<hr/>				
533580				
NEA - District Tech Meeting 533580 - Jun 27, 2024 9:00 am - 1:00 pm		64	12	16
<hr/>				
533742				
NEA - Hoxie SEAS Training 533742 - Jul 11, 2024 8:30 am - 11:30 am		30	2	5
Classroom Management,Data Disaggregation				
<hr/>				
533755				
NEA – Pre-K COPA Work Day 533755 - Aug 1, 2024 8:30 am - 3:30 pm		18	1	3
Non-Curricular				
<hr/>				
533757				
NEA – Pre-K COPA Work Day 533757 - Jul 24, 2024 8:30 am - 3:30 pm		18	1	3
Non-Curricular				
<hr/>				
535053				
NEA – Cognitive Coaching Day 1 and Day 2 535053 - Jul 31, Aug 7, 2024 8:30 am - 3:30 pm		96	7	10
Cognitive Research,Mentoring Coaching				
<hr/>				
535059				
NEA - Novice Year 1 Bootcamp Day 1 535059 - Jul 24, 2024 8:30 am - 3:30 pm		162	10	26
Classroom Management,Mentoring Coaching				
<hr/>				
535061				
NEA - Novice Year 1 Bootcamp Day 2 535061 - Jul 30, 2024 8:30 am - 3:30 pm		180	13	30
Code of Ethics for Arkansas Educators,Educational Technology,Mentoring Coaching				
<hr/>				
535067				
NEA - Novice Year 3 Orientation 535067 - Jul 31, 2024 8:30 am - 11:30 am		90	11	29
Mentoring Coaching				
<hr/>				
535069				
NEA - Novice Year 2 Orientation 535069 - Jul 31, 2024 12:30 pm - 3:30 pm		90	10	29
Mentoring Coaching				

Summary Attended

Printed Date: 6/30/2025

Last modified: 6/30/2025

Session	#Sessions	Credits	Districts	#Attended
535356				
NEA - Accurate Administration & Scoring of Level II Screeners				
535356 - Aug 13, 14, 2024 8:30 am - 3:30 pm		288	15	26
Assessment				
535757				
NEA - Business Intelligence - High School CS/Business Professional Development				
535757 - Aug 1, 2, 2024 8:30 am - 3:30 pm		36	2	3
K-12 Content				
536398				
NEA - ELPA21 Scores, Exiting Students, Programming				
536398 - Jun 19, 2024 10:00 am - 5:00 pm		24	2	3
536400				
NEA - EL Achieve Curriculum, Programming, Brainstorming, Planning, District Date				
536400 - Jul 12, 2024 9:00 am - 4:15 pm		34	2	4
536402				
NEA - Programming, Brainstorming, Planning, and District Data				
536402 - Jul 2, 2024 9:30 am - 3:45 pm		18	2	2
538436				
NEA - eSchool SMS Required Fields for Cycle Reporting				
538436 - Aug 28, 2024 9:00 am - 3:00 pm		90	13	15
Non-Curricular				
538591				
NEA - High School Computer Science Certification and Preparation				
538591 - Sep 6, 7, 13, 14, 2024 8:00 am - 4:30 pm		60	2	2
K-12 Content				
538832				
NEA - Superintendents Institute: Leadership Updates				
538832 - Jul 16, 2024 10:00 am - 12:00 pm		28	13	14
Instructional Leadership				
538883				
NEA - Superintendents Institute: Human Trafficking				
538883 - Jul 17, 2024 9:30 am - 10:00 am		6	11	12
Human Traffic				
538887				

Summary Attended

Printed Date: 6/30/2025

Last modified: 6/30/2025

Session	#Sessions	Credits	Districts	#Attended
NEA - Superintendents Institute: Identifying Bullying Behaviors & Prevention Strategies 538887 - Jul 17, 2024 10:00 am - 12:00 pm		24	11	12
Bullying				
538891				
NEA - Superintendents Institute: Tier I 538891 - Jul 18, 2024 10:00 am - 12:00 pm		28	13	14
539020				
NEA - ESOL Coordinators Meeting 539020 - Sep 11, 2024 9:00 am - 12:00 pm		39	8	12
Advocacy Leadership, Building a Collaborative Learning Community				
539023				
NEA - ESOL VIRTUAL Coordinators' Meeting 539023 - Dec 11, 2024 9:00 am - 11:00 am		26	11	13
Advocacy Leadership, Arkansas Content Standards Frameworks, Assessment, Building a Collaborative Learning Community, Classroom Management				
539068				
NEA – Personal Care Training: Medicaid In The Schools 539068 - Oct 21, 2024 9:00 am - 3:00 pm		45	6	9
Non-Curricular				
539081				
NEA - Gifted Education: New Ideas, New Resources 539081 - Sep 20, 2024 8:30 am - 3:30 pm		84	11	13
Advocacy Leadership, K-12 Content				
539094				
NEA – Career Development Mentoring 539094 - Sep 12, 2024 8:30 am - 3:30 pm		18	3	3
Arkansas Content Standards Frameworks, Instructional Strategies				
539271				
NEA - BUILD Training 539271 - Oct 21, 2024 8:30 am - 3:30 pm		180	7	30
Instructional Strategies, K-12 Content				
539421				
NEA - Computer Science Impact Meeting 539421 - Oct 16, 2024 8:30 am - 3:30 pm		48	7	8
K-12 Content				
539473				

Summary Attended

Printed Date: 6/30/2025 Last modified: 6/30/2025

Session	#Sessions	Credits	Districts	#Attended
NEA - District Technology Meeting 539473 - Aug 28, 2024 9:30 am - 1:30 pm		23	3	4
Educational Technology				
539727				
NEA - eSchool Progress Report Training/SIS Workday 539727 - Sep 5, 2024 9:00 am - 2:00 pm		40	4	8
Non-Curricular				
539733				
NEA - eSchool Report Card Training/SIS Workday 539733 - Sep 26, 2024 9:00 am - 1:00 pm		55	6	11
Non-Curricular				
539744				
NEA - COGNOS TRAINING 539744 - Oct 22, 2024 9:00 am - 2:00 pm		45	5	9
Non-Curricular				
539773				
NEA - eSchool Transcript Training 539773 - Nov 14, 2024 9:00 am - 2:00 pm		40	6	8
Non-Curricular				
540345				
NEA – ATLAS 3-10 Summative Data Interpretation Workshop 540345 - Oct 24, 2024 8:30 am - 11:30 am		165	15	55
Assessment				
540346				
NEA – ATLAS 3-10 Summative Data Interpretation Workshop 540346 - Oct 24, 2024 12:30 pm - 3:30 pm		102	7	34
Assessment				
541668				
NEA - EL Achieve Support 541668 - Sep 11, 2024 1:00 pm - 4:00 pm		15	3	5
541676				
NEA - High School Administrator Meeting 541676 - Sep 26, 2024 12:00 pm - 2:30 pm		25	9	10
Building a Collaborative Learning Community				
541681				
NEA - Elementary/Middle School Administrator Meeting 541681 - Sep 26, 2024 9:00 am - 11:30 am		63	12	25
Building a Collaborative Learning Community				

Summary Attended

Printed Date: 6/30/2025

Last modified: 6/30/2025

Session	#Sessions	Credits	Districts	#Attended
541789				
NEA - Transition 101				
541789 - Nov 4, 2024 8:30 am - 3:30 pm		216	14	36
Advocacy Leadership,Instructional Leadership				
541805				
NEA - Teacher Center Committee Meeting #3				
541805 - Apr 16, 2025 9:00 am - 2:30 pm		67	10	13
Building a Collaborative Learning Community				
541810				
NEA - Teacher Center Committee Meeting				
541810 - Oct 9, 2024 9:00 am - 2:30 pm		105	16	21
541812				
NEA - Teacher Center Committee Meeting				
541812 - Jan 15, 2025 9:00 am - 2:00 pm		80	14	16
Building a Collaborative Learning Community				
542332				
NEA - Introducing Z-Space				
542332 - Oct 14, 2024 12:30 pm - 3:30 pm		18	5	5
Data Disaggregation,Educational Technology,Instructional Leadership,Instructional Strategies				
542346				
NEA - Autism Awareness: Recognizing Characteristics in the Educational Setting				
542346 - Oct 29, 2024 8:30 am - 3:30 pm		120	10	20
Non-Curricular				
542356				
NEA - Curriculum Coordinators Meeting #1				
542356 - Oct 1, 2024 8:30 am - 11:30 am		24	7	7
Curriculum Alignment				
542358				
NEA - Counselors Mtg. #1				
542358 - Oct 4, 2024 9:00 am - 3:00 pm		37	4	6
Building a Collaborative Learning Community				
542364				
NEA - Library Media Specialist Meeting #1				
542364 - Nov 12, 2024 9:00 am - 3:00 pm		80	9	16
Building a Collaborative Learning Community				
542366				

Summary Attended

Printed Date: 6/30/2025

Last modified: 6/30/2025

Session	#Sessions	Credits	Districts	#Attended
NEA - AI Training for District Leadership Teams 542366 - Oct 16, 17, 2024 8:30 am - 2:30 pm		193	8	16
542367				
NEA - AI Training for District Leadership Teams 542367 - Nov 13, 14, 2024 8:30 am - 2:30 pm		388	9	40
542373				
NEA - CoP Year II Grant with BEG Partners 542373 - Oct 28, 2024 8:30 am - 2:30 pm		70	5	14
542465				
NEA - EL Achieve Curriculum, Programming, Brainstorming, Planning, District Date 542465 - Oct 4, 2024 9:00 am - 2:30 pm		30	2	6
542652				
NEA - Understanding the 504 Plan 542652 - Nov 1, 2024 8:30 am - 11:30 am		78	8	26
Non-Curricular				
542663				
NEA - Accurate Administration & Scoring of Level II Screeners 542663 - Nov 11, 12, 2024 8:30 am - 11:30 am		186	6	21
Assessment				
542965				
NEA - Visual and Performing Arts Festival Committee Meeting 542965 - Oct 18, 2024 12:30 pm - 3:30 pm		9	3	3
Non-Curricular				
543031				
NEA - Curriculum Coordinators Meeting #3 543031 - Jan 14, 2025 8:30 am - 11:30 am		24	7	7
Curriculum Alignment				
543033				
NEA - Curriculum Coordinators Meeting #4 543033 - Apr 2, 2025 8:30 am - 11:30 am		24	7	7
Instructional Leadership				
543057				
NEA - District Technology Coordinators Meeting 543057 - Oct 30, 2024 9:00 am - 2:00 pm		50	7	10
Educational Technology				

Summary Attended

Printed Date: 6/30/2025

Last modified: 6/30/2025

Session	#Sessions	Credits	Districts	#Attended
543100				
NEA - Gifted Coordinator/Facilitator's Quarterly Meeting				
543100 - Dec 12, 2024 8:30 am - 3:30 pm		84	12	13
Data Disaggregation,K-12 Content,Mentoring Coaching				
543229				
NEA - Library Media Specialist #2				
543229 - Jan 17, 2025 9:00 am - 3:00 pm		40	7	10
543231				
NEA - Counselors Meeting				
543231 - Dec 4, 2024 9:00 am - 3:00 pm		6	1	1
Building a Collaborative Learning Community				
544270				
NEA - Counselors Meeting				
544270 - Feb 11, 2025 9:00 am - 3:00 pm		48	6	7
Building a Collaborative Learning Community				
544279				
NEA - High School Administrator Meeting				
544279 - Jan 23, 2025 12:00 pm - 2:30 pm		45	11	18
Building a Collaborative Learning Community				
544289				
NEA - Elementary/Middle School Administrator Meeting				
544289 - Jan 23, 2025 9:00 am - 11:30 am		50	10	20
Building a Collaborative Learning Community				
544368				
NEA - EL Achieve Curriculum, Programming, Brainstorming, Planning, District Date				
544368 - Nov 1, 2024 9:00 am - 2:30 pm		35	3	7
544464				
NEA - Cognitive Coaching Day 3				
544464 - Dec 16, 2024 8:30 am - 3:30 pm		108	11	18
Building a Collaborative Learning Community				
544466				
NEA - Cognitive Coaching Day 4				
544466 - Feb 7, 2025 8:30 am - 3:30 pm		90	9	15
544497				

Summary Attended

Printed Date: 6/30/2025 Last modified: 6/30/2025

Session	#Sessions	Credits	Districts	#Attended
NEA - EL Achieve Curriculum, Programming, Brainstorming, Planning, District Date				
544497 - Jan 24, 2025 9:00 am - 2:30 pm		30	2	6
<hr/>				
544795				
NEA - Sound Wall PD				
544795 - Dec 2, 2024 8:30 am - 3:30 pm		150	9	25
Arkansas Content Standards Frameworks, Curriculum Alignment				
545148				
NEA - High School Computer Science Certification and Preparation				
545148 - Jan 24, 25, 31, Feb 1, 2025 8:00 am - 4:30 pm		48	2	2
K-12 Content				
545406				
NEA – Personal Care Training: Medicaid In The Schools				
545406 - Feb 7, 2025 9:00 am - 3:00 pm		50	5	10
Non-Curricular				
546096				
NEA - Take Flight Recalibration				
546096 - Jan 15, 2025 8:30 am - 3:30 pm		150	10	25
Arkansas Content Standards Frameworks, Building a Collaborative Learning Community, Curriculum Alignment, Instructional Strategies				
546899				
NEA - eSchool Transcript Workday				
546899 - Jan 29, 2025 9:00 am - 1:00 pm		24	6	6
<hr/>				
546992				
NEA – Pathway Revisions				
546992 - Mar 18, 2025 9:00 am - 12:00 pm		189	20	63
Curriculum Alignment, Instructional Leadership				
547297				
NEA - Visual and Performing Arts Festival Committee Meeting				
547297 - Jan 24, 2025 12:00 pm - 3:30 pm		15	5	5
Non-Curricular				
547834				
NEA - Instructional Facilitators Meeting				
547834 - Mar 14, 2025 9:00 am - 2:30 pm		62	7	11
Instructional Leadership				
547838				

Summary Attended

Printed Date: 6/30/2025 Last modified: 6/30/2025

Session	#Sessions	Credits	Districts	#Attended
NEA – AR App Work Session 547838 - Feb 6, 2025 8:30 am - 2:30 pm		40	6	8
Data Disaggregation				
547861				
NEA – AR App Work Session #2 547861 - Feb 27, 2025 8:30 am - 2:30 pm		62	8	11
Data Disaggregation				
547867				
NEA – AR App Work Session #3 547867 - Mar 6, 2025 8:30 am - 2:30 pm		50	7	10
Data Disaggregation				
547869				
NEA – AR App Work Session #4 547869 - Mar 19, 2025 8:30 am - 2:30 pm		42	7	7
Data Disaggregation				
547873				
NEA – AR App Work Session #5 547873 - Apr 11, 2025 8:30 am - 2:30 pm		40	5	8
Data Disaggregation				
547896				
NEA – AR App Work Session #6 547896 - May 14, 2025 8:30 am - 2:30 pm		15	3	3
Data Disaggregation				
548099				
NEA – CERT Training 548099 - Mar 12, 2025 1:00 pm - 3:30 pm		20	3	8
School Safety				
548177				
** VIRTUAL WATCH PARTY ** Act 504 K12 Cybersecurity Policy Regional Workshop Series 548177 - Mar 4, 2025 9:00 am - 12:00 pm		21	5	7
Educational Technology				
548178				
** VIRTUAL WATCH PARTY ** Act 504 K12 Cybersecurity Policy Regional Workshop Series 548178 - Mar 6, 2025 9:00 am - 12:00 pm		33	8	11
Educational Technology				
548181				
** VIRTUAL WATCH PARTY ** Act 504 K12 Cybersecurity Policy Regional Workshop Series 548181 - Mar 11, 2025 9:00 am - 12:00 pm		33	7	11
Educational Technology				

Summary Attended

Printed Date: 6/30/2025

Last modified: 6/30/2025

Session	#Sessions	Credits	Districts	#Attended
548184				
** VIRTUAL WATCH PARTY ** Act 504 K12 Cybersecurity Policy Regional Workshop Series				
548184 - Apr 1, 2025 9:00 am - 12:00 pm		48	9	16
Educational Technology				
548210				
** VIRTUAL WATCH PARTY ** Act 504 K12 Cybersecurity Policy Regional Workshop Series				
548210 - Apr 3, 2025 9:00 am - 12:00 pm		15	4	5
Educational Technology				
548211				
** VIRTUAL WATCH PARTY ** Act 504 K12 Cybersecurity Policy Regional Workshop Series				
548211 - Apr 10, 2025 9:00 am - 12:00 pm		48	11	16
Educational Technology				
548302				
NEA - eSchool Next Year Data Base Setups				
548302 - Feb 24, 2025 9:00 am - 1:00 pm		72	13	18
Non-Curricular				
548594				
NEA – AI-Supported Planning				
548594 - Feb 26, 2025 9:00 am - 3:00 pm		132	11	22
K-12 Content				
549243				
NEA - Gifted Coordinator/Facilitator's Quarterly Meeting				
549243 - Mar 20, 2025 8:30 am - 3:30 pm		66	10	11
Data Disaggregation,K-12 Content				
550823				
NEA – AI-Supported Planning				
550823 - Mar 17, 2025 9:00 am - 3:00 pm		132	8	21
K-12 Content				
551092				
NEA - eSchool Year End Rollover Prep. Training				
551092 - Apr 28, 2025 9:00 am - 3:30 pm		102	13	17
Non-Curricular				
551111				
NEA - CoP Data Profile				
551111 - Apr 22, 2025 8:30 am - 3:30 pm		72	7	12
551464				

Summary Attended

Printed Date: 6/30/2025 Last modified: 6/30/2025

Session	#Sessions	Credits	Districts	#Attended
NEA - eSchool Scheduling Training 551464 - Apr 3, 2025 9:00 am - 3:30 pm		84	8	14
Non-Curricular				
553912				
NEA - Classroom Management Tools for All Teachers 553912 - Apr 30, May 1, 2025 8:30 am - 3:30 pm		324	10	27
Classroom Management				
555335				
NEA - COPA 555335 - Aug 1, 2024 8:30 am - 3:30 pm		60	2	10
Assessment				
558670				
NEA - Sound Wall PD Pocahontas School District/Others 558670 - May 29, 2025 8:30 am - 3:30 pm		96	1	16
Arkansas Content Standards Frameworks, Curriculum Alignment				
562890				
NEA - Principals Meeting 562890 - Aug 29, 2024 9:00 am - 12:00 pm		111	13	37
Instructional Leadership, Supervision				
563015				
NEA - Principals Meeting 563015 - Nov 21, 2024 9:00 am - 12:00 pm		84	12	28
Instructional Leadership, Supervision				
GRAND TOTAL:	192	25046	94	2940