

President's Report

April 25, 2026

President J.W. Crawford III



University Technology

Texas Dir Shared Tech Services



Timeline

Week 1 (4/27/25 to 5/1/26)	Week 2 (5/4/25 to 5/8/26)	Week 3 (5/11/25 to 5/15/26)
Discovery and inventory	Analysis and validation	Completion and delivery of final report



University Student Advancement

Texas Southern University Year in Review 2025-26



- Fall 2024-2025 **1yr persistence rate increased to the highest on record at 70%** [2022-23=57%; 2023-24=66%]



- Fall 2024-2025 **1yr progression/matriculation increased by 8% points to 35%, which is the second highest on record** [2022-23=21%; 2023-24=27%]



- 2025 **6yr graduation rate increased by 2% points to 24%, which is the second highest on record** [2017-2023=20%; 2018-2024=22%]
- **Degrees awarded increased 10%** over prior year [Fall 2023-Spring 2024=1,470, Fall 2024-Spring 2025 =1,617]



University Student Advancement

- **“Earn Your Tiger Stripes”**
- **“Tiger Advantage” Program**
- **“Pathway to 30”**
- **Strategic Cohort Monitoring**
- **Intrusive Academic Advising**
- **Freshman Seminar**
- **Obtain Credentials** (i.e., badges and certifications)

University Student Advancement

- **Supplemental Instruction**
- **Online 24/7 Tutoring Platform**
- **Campus PALS** (P)eer(A)ssistance,(L)eadership & (S)ervice
- **Project ROAR** (Rising Over All Roadblocks)
- **Leveraging Technology**
- **Customized Training for Advisors and Enrollment Services**
- **Forage** (Job simulation)

University Student Advancement



Student Success Initiatives-T-CLAW (Tigers Collectively Learning and Actively Working)

T-CLAW is an enterprise-level technology that connects administrators, advisors, deans, faculty, other staff, and students in a coordinated care network to proactively manage student success.



Intelligence

Data analytics

Based on historical data from across the institution, members use data to drive day-to-day activity and inform intervention strategy and review data to track progress and make improvements.



Strategic Care

Creating a connected and coordinated support network for all students

Provide holistic care to students. Members rely on cases, alerts, and campaigns to serve all students and to ensure seamless coordination between all student support offices.



Smart Guidance

Providing curated guidance at the most pivotal moments in each student's journey

Empower students to succeed through customized, student-friendly guidance in-real time and automatically notify them when they make a misstep to help them stay on the right path.

University Research and Innovation

Executive Snapshot

FY2026 YTD

September 1, 2025 – April 15, 2026



TEXAS SOUTHERN UNIVERSITY
Division of Research & Innovation

79

Proposals Submitted

\$113M

Total Funds Requested

45

Awards Received

\$39.9M

Total Awarded

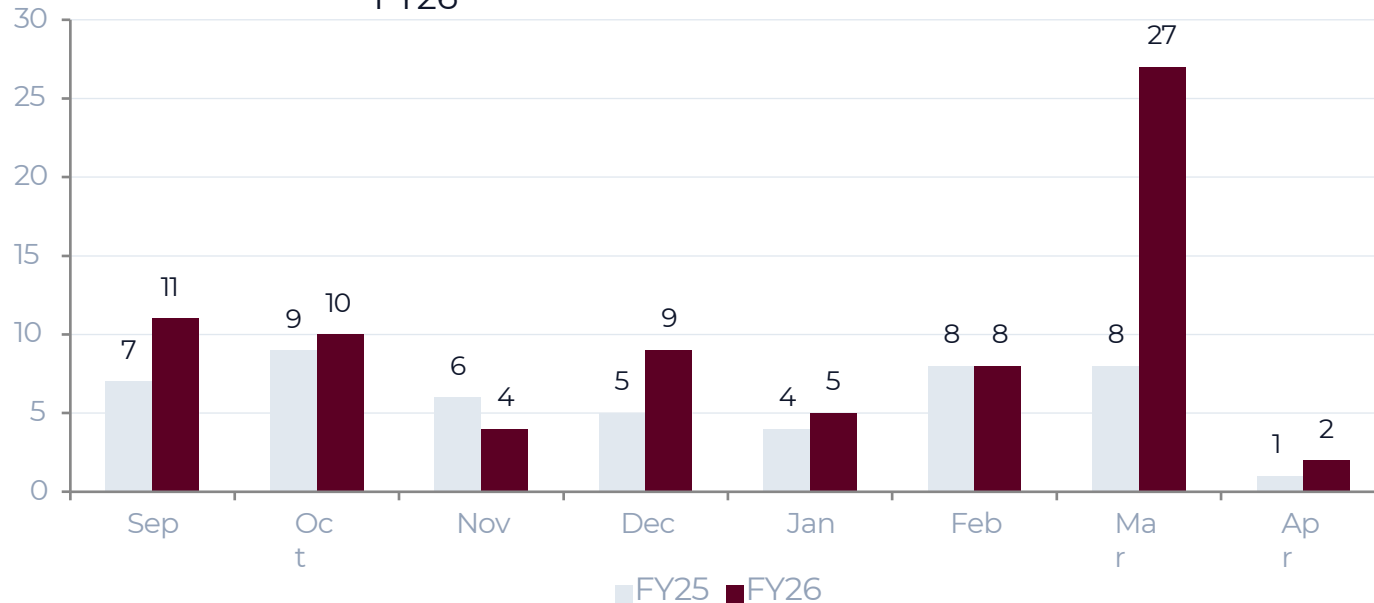
+64.6%

Proposal Volume YoY

+48.6%

Award Dollars YoY

Monthly Submission Data- FY25 vs. FY26



Faculty Engagement

EXCEEDS

38.0%

30 of 79 proposals from New or Early-Stage PIs (exceeds $\geq 25\%$ target). See definitions on slide 6.

Emerging College Development

WATCH

18 / 38

Proposals from underfunded colleges through April 15

University Research and Innovation

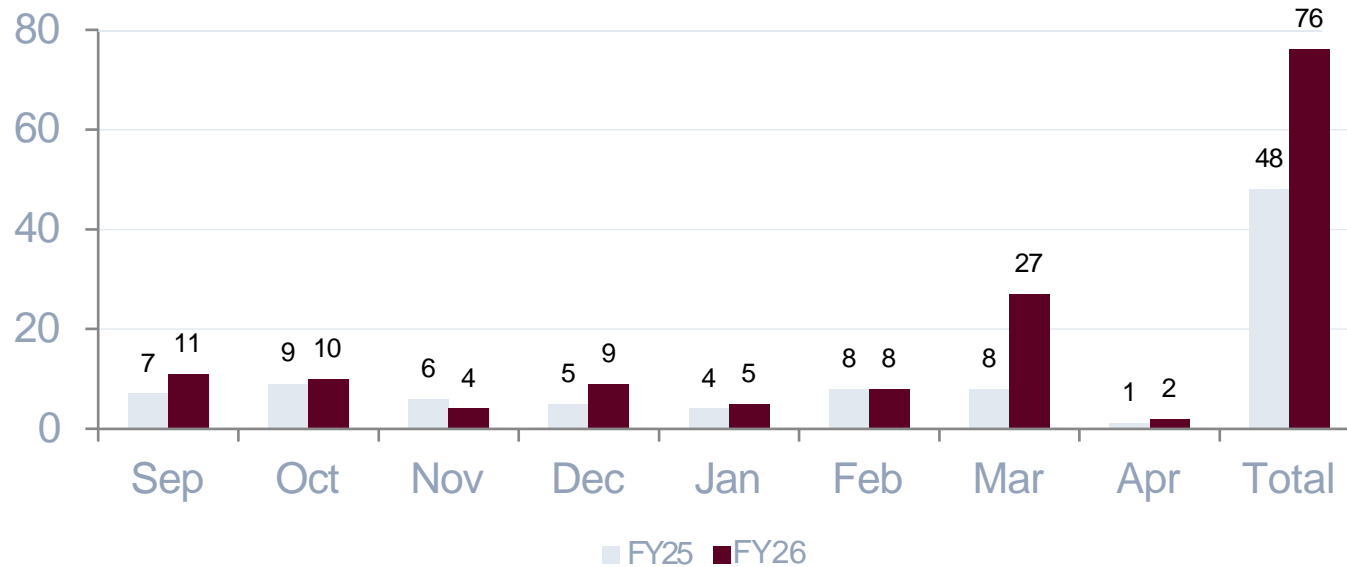
Year-Over-Year Comparison



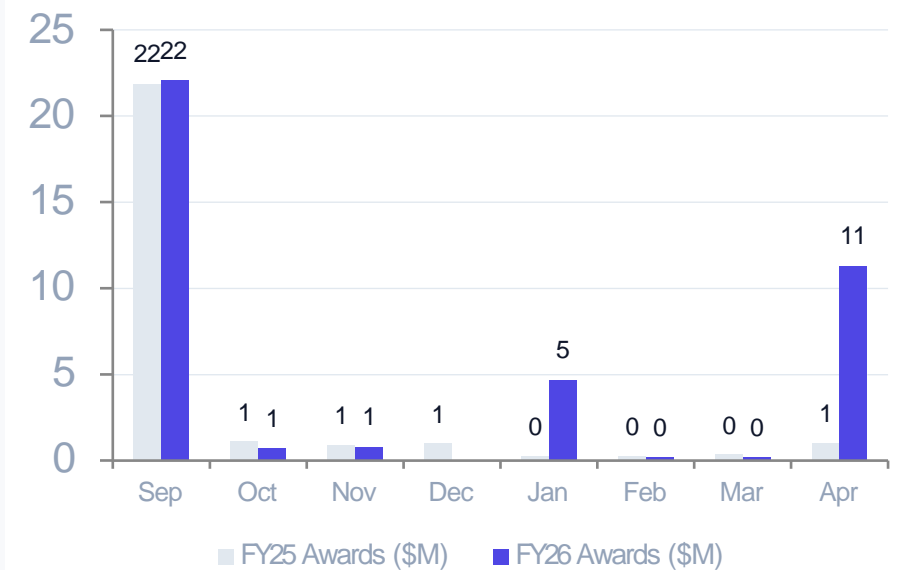
TEXAS SOUTHERN UNIVERSITY
Division of Research & Innovation

FY25 → FY26 · September through April (same period)

Monthly Proposals Submitted



Award Dollars by Month (\$M)



Key Takeaways

- **Proposal Volume:** +64.6% YoY (79 vs. 48). March (28 vs. 8) and April (4 vs. 1) drove growth.
- **Award Dollars:** +48.6% YoY (\$39.9M vs. \$26.9M). April Title III renewal (\$11.3M) drove the surge.
- **Requests vs. Awards:** FY26 requests (\$113.3M) reflect FORGE + 3 new DRI submissions added in April.
- **Award Count:** 45 vs. 50 in FY25 — slight dip in count; dollar value up significantly.

University Research and Innovation



Lobby/Receptio

University Research and Innovation

Our Vision

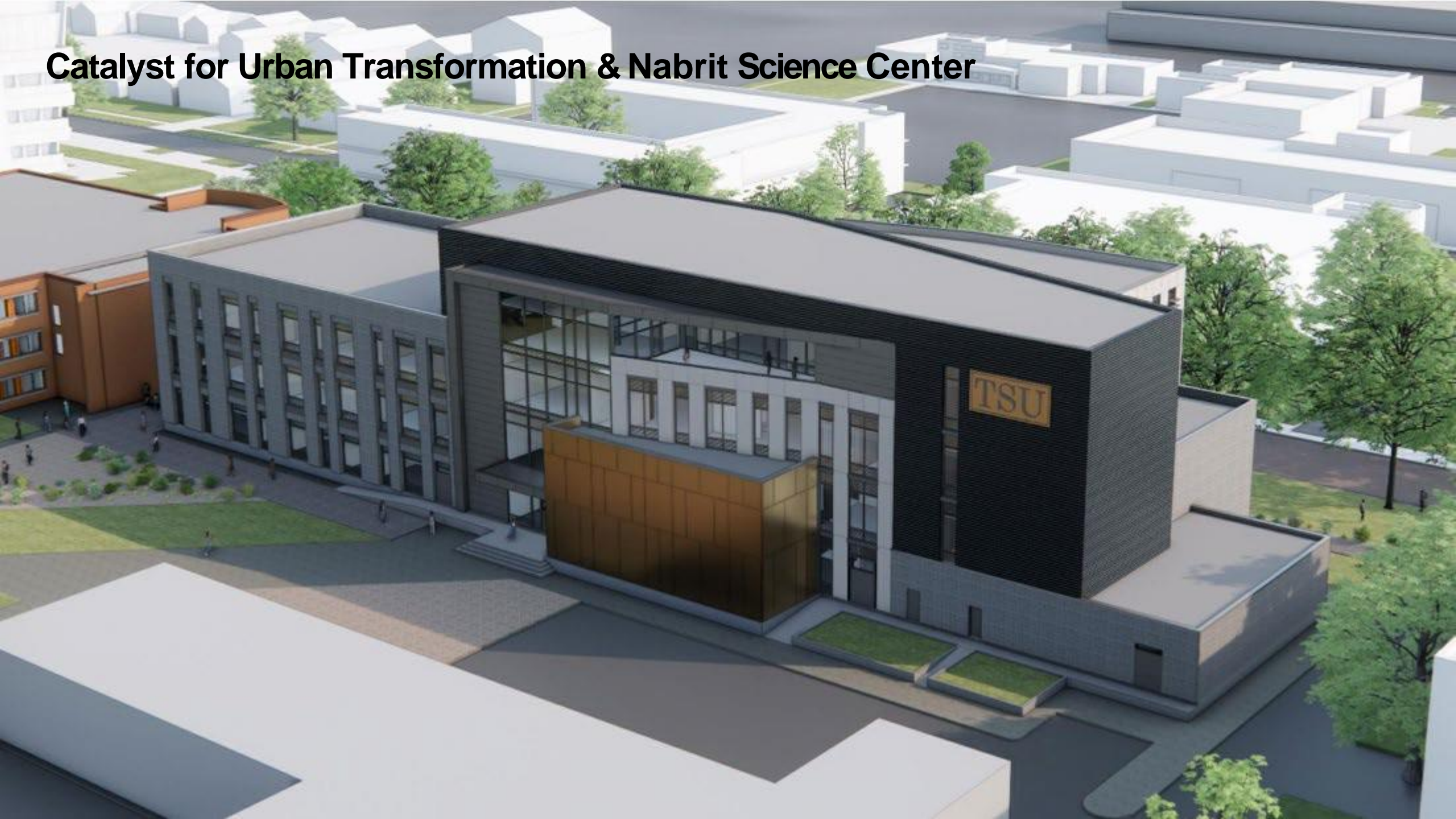
At the Texas Southern University Institute of Urban Public Health, we are committed to transforming urban communities by addressing the critical medical and non-medical drivers of health disparities through workforce development, food insecurity, and access to services that shape the wellbeing of individuals and their families.

Six Institute Objectives

- 1 Housing Advocacy & Community Outreach
- 2 Workforce Training & Professional Development
- 3 Research Pipeline on Social Determinants
- 4 Medical & Wellness Service Access
- 5 K-12 Student Mentoring & Tutoring
- 6 Centralized Community Engagement Space

“How should this building serve the community in a way that universities often fail to do?”

Catalyst for Urban Transformation & Nabrit Science Center







The Health & Wellness Center

TSU Transformation Complex



View from Southeast Corner (*North South Tiger Walk*)

University Facilities Improvement (Master Plan Execution)

Demolition Projects Schedule

Project	Status	Expected Completion Dates	Costs	GSF	Campus Master Plan
Nabrit (1958)	Complete	May 2025	\$1,515,634.29 (Bonds)	147,043	New Nabrit Laboratory Building
RJT Library (1957)	In-Progress -Removal of electrical systems	July 2026	\$2,029,265.00	135,443	Green Space
Motel & Hotel (Parcel Purchase)	Complete	February 2025	\$297,550	7,844 (Store) 10,000 (Hotel)	Department of Public Safety
Lanier East (1956)	In-Progress -Bids Completed -Coordinating utility disconnections	TBD	\$300,000	54,834	Living Learning Community / Recreation Center

University Facilities Improvement (Master Plan Execution)

Electrical Infrastructure Expansion

- A new electrical service drop will be installed adjacent to the existing electrical infrastructure on the south side of campus, near the General Services Building.
- This infrastructure will support power distribution to new and future buildings.
- This approach enables the University to strategically shift electrical load if needed.

Project Status:

- ✓ Drawings completed
- ✓ CenterPoint Energy Application Submitted

University Facilities Improvement (Master Plan Execution)

HVAC and Building Systems Modernization

- Campus-wide investment to stabilize and modernize critical building systems

Phases 1 & 2

- **15 Buildings** Impacted across academic, student, and support facilities
- **\$14M+** Total Investment (HEERF-funded)

Scope included:

- ✓ HVAC system repairs and replacements
- ✓ Building Automation Systems (BAS) upgrades
- ✓ Roofing, mechanical, and air quality improvements

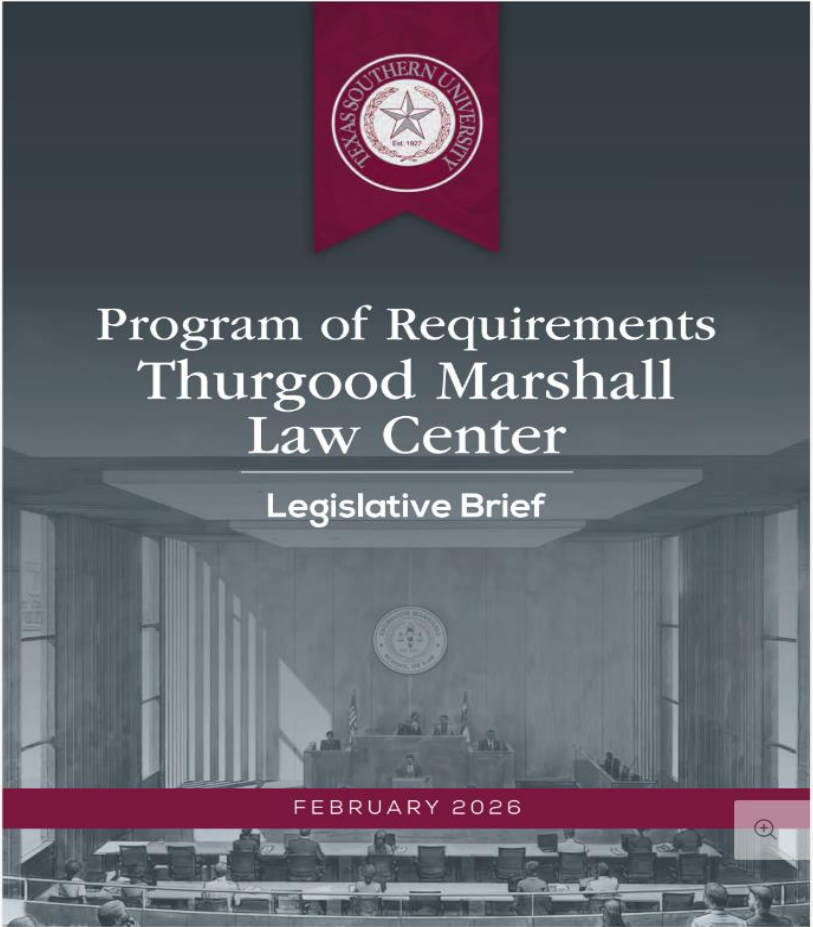
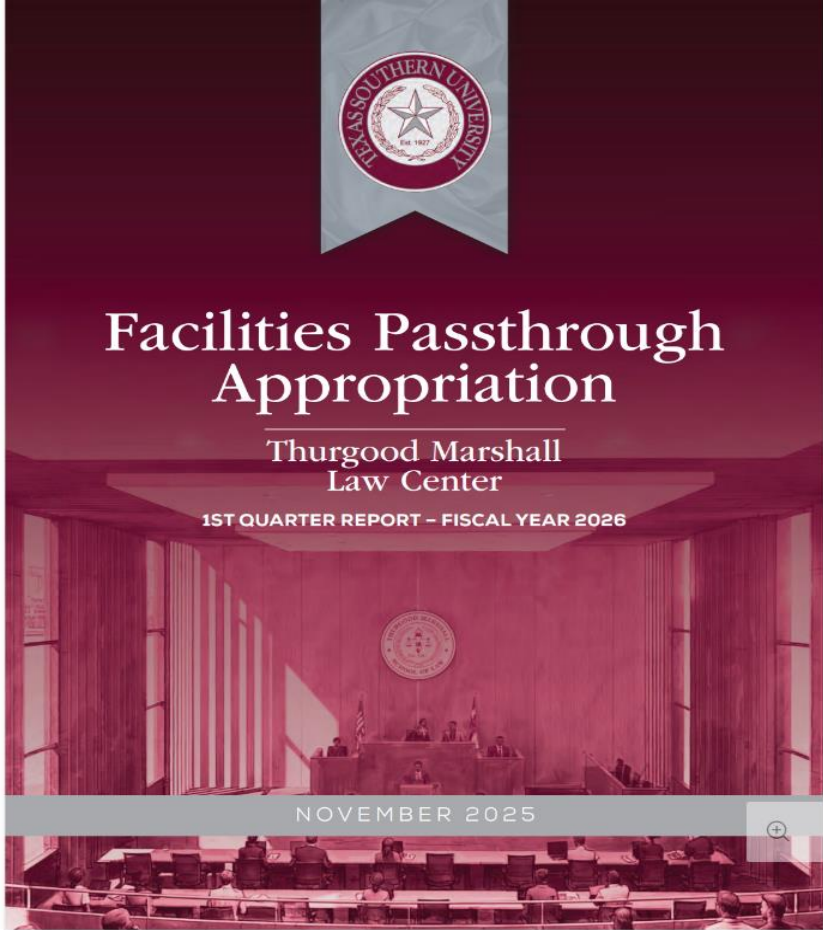
Outcome: Restored reliability and reduced deferred maintenance

Phase 3:

- Expansion to additional campus facilities
- Final scope and pricing are currently being refined

89th Legislative Appropriations Request

Thurgood Marshall Law Center



University Master Plan Overview

Fly Throughs

Entry Drive

Housing

Stadium

Engineering

Museum

90th Legislative Appropriations Request

RECOMMENDATIONS

- **Capital Request:** Proposed Law Center rebuild
- Similar to the increase in the **COPHS** non-formula support item, there are a few other non-formula items that need increases:
 - College of Education (**COE**)
 - School of Business (**JHJ**)
 - Law School (**TMSL**)
 - Summer of Success
- Repurpose the community redevelopment non-formula support item for **COSET** and seek an increase

University Advancement

Campaign Discussion

LEGACY FORWARD FOR OUR TIGERS

Aligned to the Ascend 2030 Strategic Plan, **LEGACY FORWARD** invests in three areas that most directly shape student success and institutional excellence:

1. Endowment Growth

Fueling scholarships, reducing debt, and expanding graduate and professional pathways.

2. Advanced Living And Learning Environment

Building the spaces where students live, learn, discover, and belong.

3. Powering Texas Southern's Future

Transforming our digital and innovation infrastructure for the next era of higher education.

With **\$1.6 billion** in identified need, we are engaging our closest supporters in strategic conversations to build focused philanthropic investments toward transforming Texas Southern.

THANK YOU

President J.W. Crawford III

