



## UNITED INDEPENDENT SCHOOL DISTRICT AGENDA ACTION ITEM

**Topic:** Proposed Boundary Change for 2014-2015 School Year

**Submitted by:** Mike Garza  **of:** Executive Director of Support Services

**Approved for transmittal to school board:** November 20, 2013

**Recommendations:**

Administration is recommending that the Board of Trustees approve the proposed boundary change for school year 2014-2015 as presented for Nye Elementary and Col. Benavides Elementary. Feeder pattern will be Nye Elementary, United Middle School, and Alexander High School.

**Rationale:**

They boundary changes are being proposed to provide efficient use of district facilities. Existing attendance boundaries would create overcrowding at certain facilities while other facilities would be under-utilized.

**Budgetary Information:**

N/A

**Board Policy Reference and Compliance**

N/A

## United Independent School District

### Proposed Elementary School Attendance Boundary for 2014-2015

1. Nye Elementary School

The Southwest boundary starts at Mann Road and Rio Grande River east on Mann Road to IH 35, south on IH35, east on Calle Del Norte. Portion of Saint James to McPherson Rd., north on McPherson Rd., west on University Blvd. including Rocio Dr., Tournament and Green Meadow Court, continuing north on McPherson Rd., west on Andrew, south of Lindenwood Rd., west on Idylwood, west on Berkley Road, south on Broadcrest, west on Candlewood to Del Mar Blvd., west on Del Mar Blvd. to Springfield to include Hilltop and Salinas Key Division north to International Blvd., west on International Blvd. to San Dario Ave.



# Current Col. Santos Boundary



**Legend**

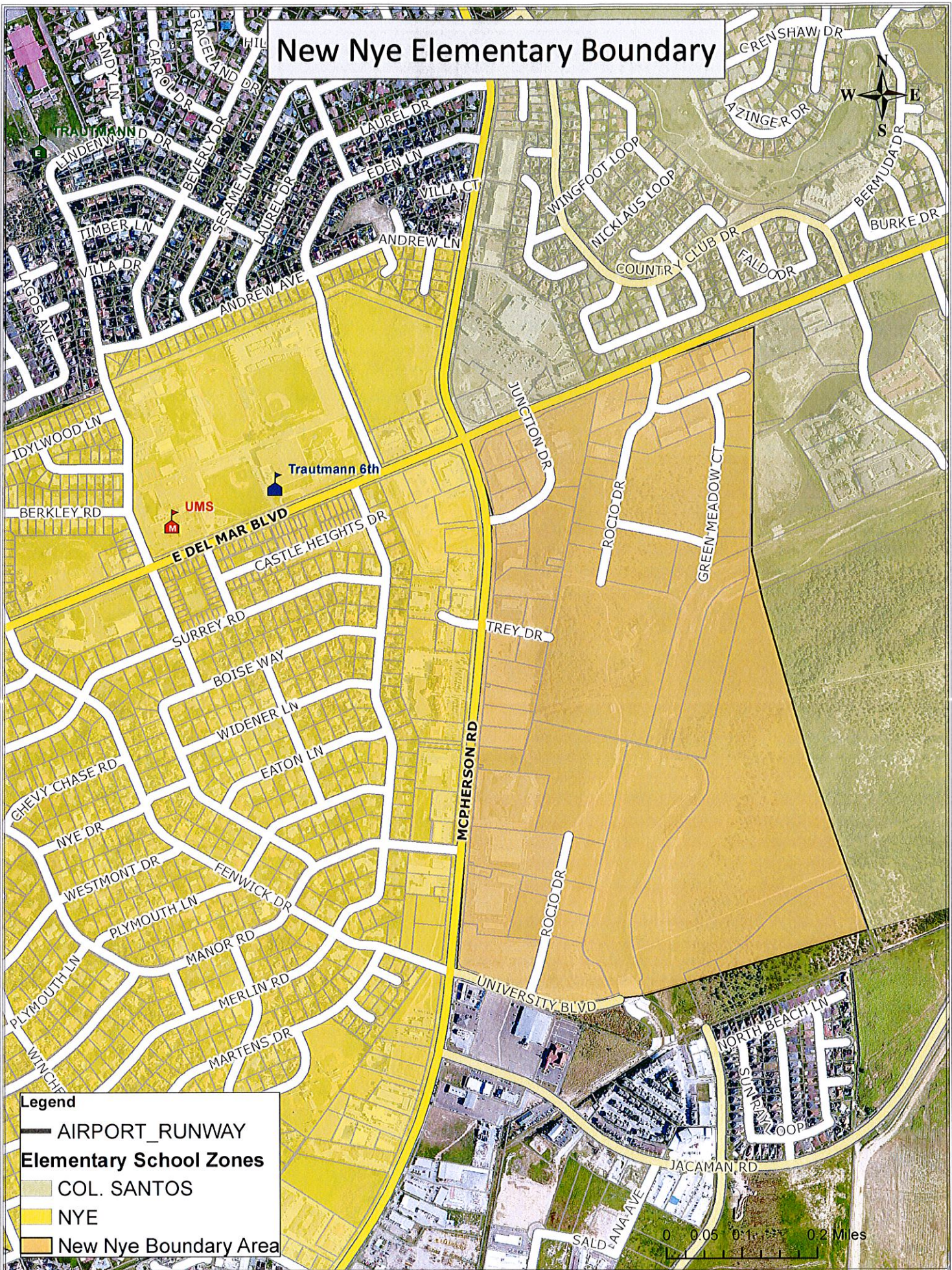
**Elementary School Zones**

- COL. SANTOS
- NEWMAN
- AIRPORT RUNWAY





# New Nye Elementary Boundary



## Legend

- AIRPORT\_RUNWAY
- Elementary School Zones**
- COL. SANTOS
- NYE
- New Nye Boundary Area

0 0.05 0.1 0.2 Miles