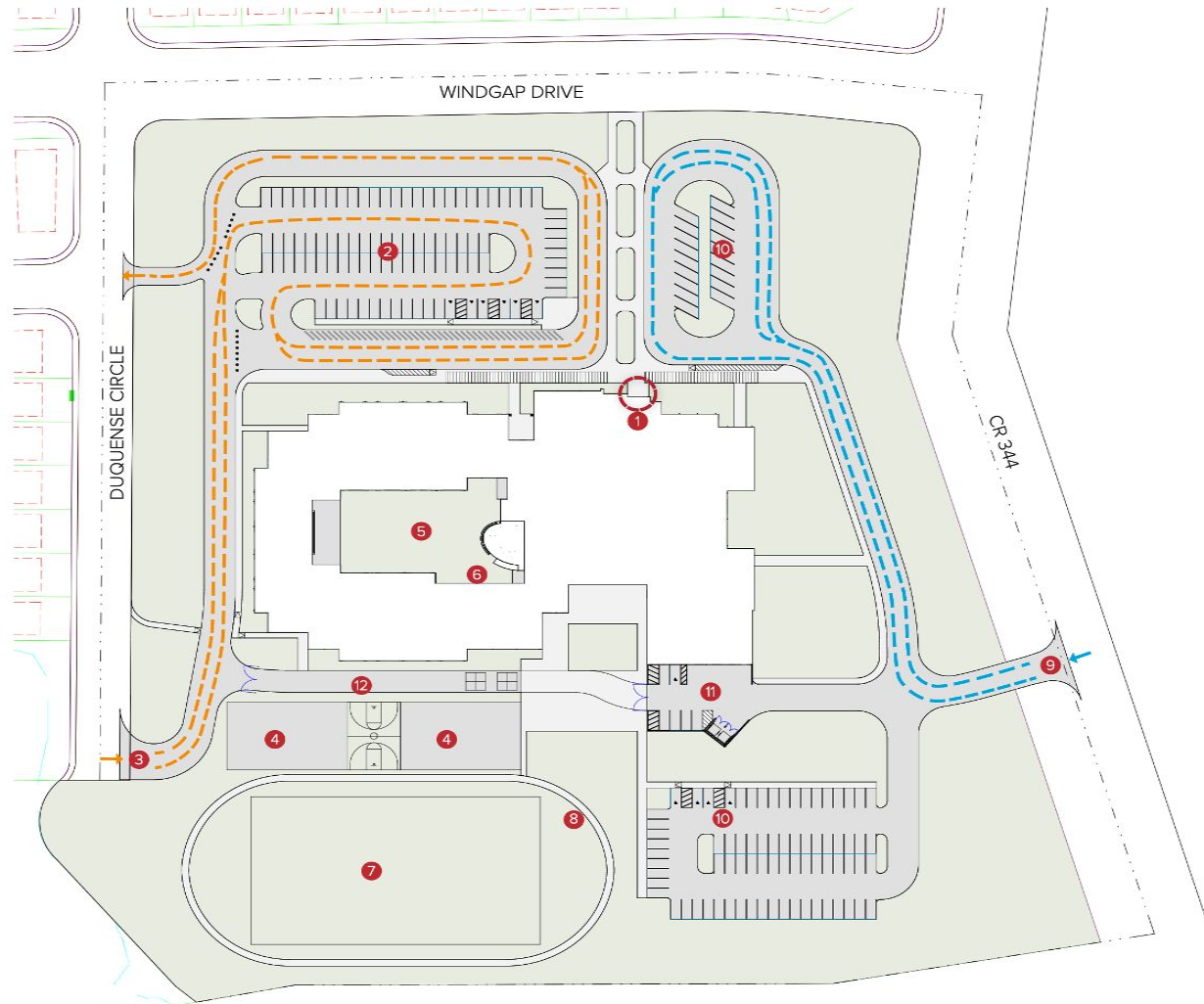


2023 Bond Atlas Ranch Elementary School Schematic Design, TEA Education Delivery Method, Long-Range Plan, and Building Code



Stephen P. Dorman, P.E., Sledge Engineering
Michael Morow, AIA, Huckabee
Budget Workshop and Regular Board Meeting
May 20, 2026



SITE PLAN KEY

- ENTRY VESTIBULE
- ① ENTRY
- ② VISITOR / EVENT PARKING
- ③ PARENT DRIVE
- ④ PLAY AREA
- ⑤ COURTYARD
- ⑥ ART PATIO
- ⑦ PLAY FIELD
- ⑧ WALKING TRAIL
- ⑨ BUS LOOP
- ⑩ STAFF/EVENT PARKING
- ⑪ SERVICE YARD
- ⑫ FIRE LANE ACCESS

LINE TYPE LEGEND

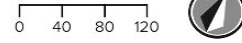
- ← - - - - BUS DRIVE
- ← - - - - PARENT DRIVE
- - - - PROPERTY LINE

SITE PLAN STATISTICS

ACREAGE
 SITE: 13.2 ACRES

PARKING
 STAFF / VISITOR: 190
 ACCESSIBLE: 11
 TOTAL: 201

THIS SITE PLAN IS CONCEPTUAL IN NATURE AND IS NOT A COMPLETE SITE ANALYSIS. FURTHER STUDY THE FOLLOWING MUST STILL BE COMPLETED: SITE DRAINAGE, GRADING, UTILITY/TOPOGRAPHICAL SURVEYS, GEOTECHNICAL DATA, PHASE I ENVIRONMENTAL IMPACTS, ZONING, AND EASEMENTS.



- Academic Space
- Academic Support
- Administration
- Administration Support
- Athletic Space
- Athletic Support
- Circulation
- Dining
- Dining Support (Kitchen)
- Fine Arts
- Fine Arts Support
- Library
- Library Support
- Support Space



NOT FOR REGULATORY APPROVAL, PERMITTING OR CONSTRUCTION
 MICHAEL A. MOROW, TX #25557

- Academic Space
- Academic Support
- Administration
- Athletic Space
- Circulation
- Dining
- Support Space





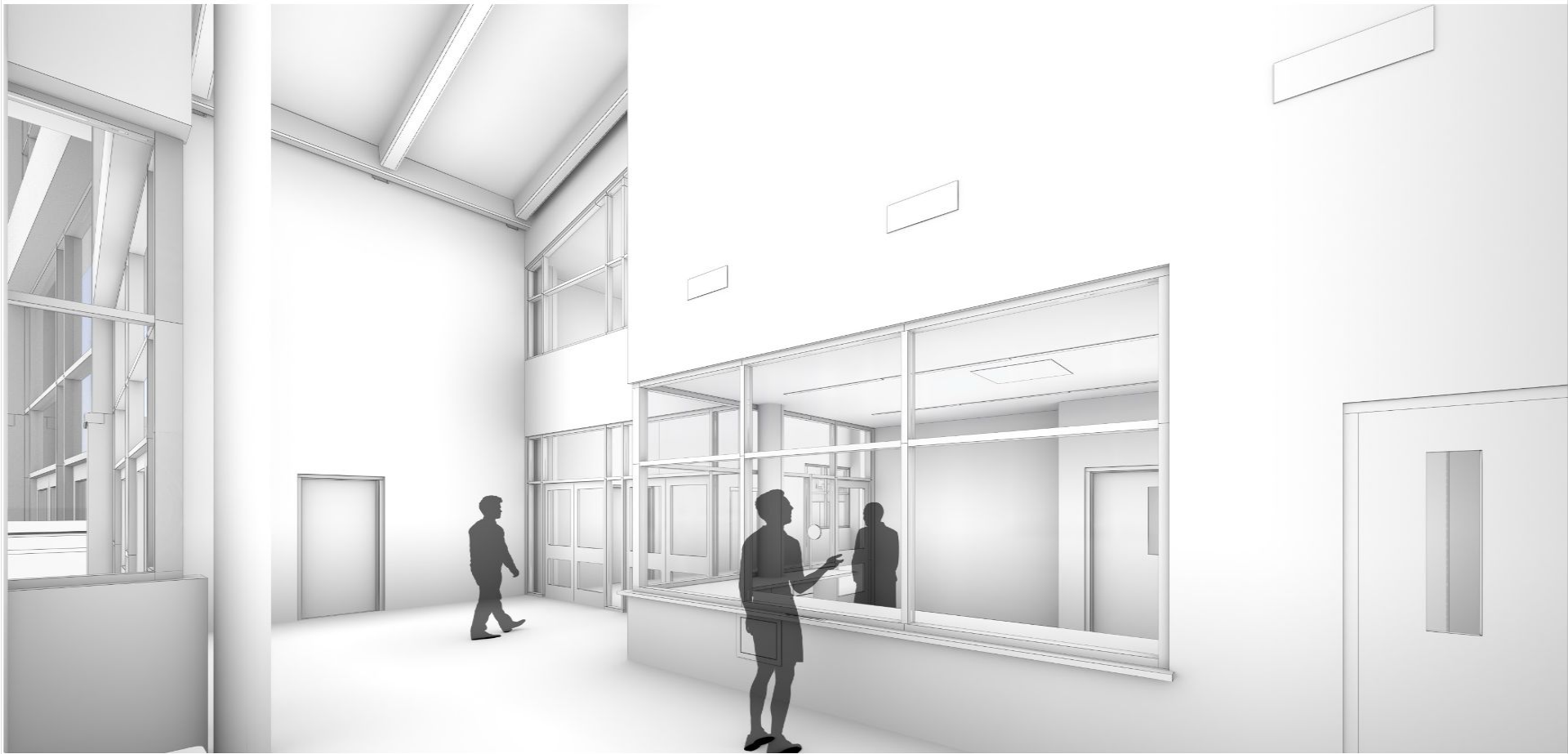
Huckabee

EXTERIOR RENDERING - MAIN ENTRY













SAN SABA
STONE BLEND



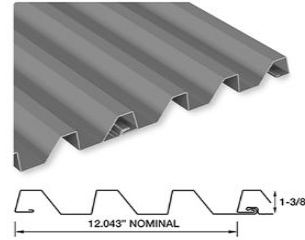
WOOD LOOK METAL
PANELS LONGBOARD
LIGHT CHERRY



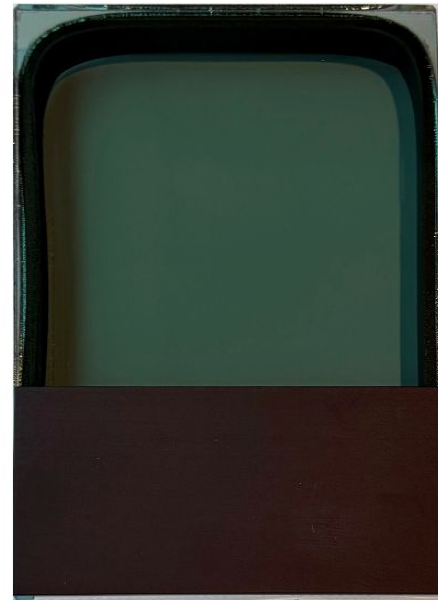
METAL WALL PANELS
PAC CLAD
SILVER FINISH



METAL WALL PANEL
PROFILE



EXTERIOR GLAZING /
STOREFRONT
DARK BRONZE



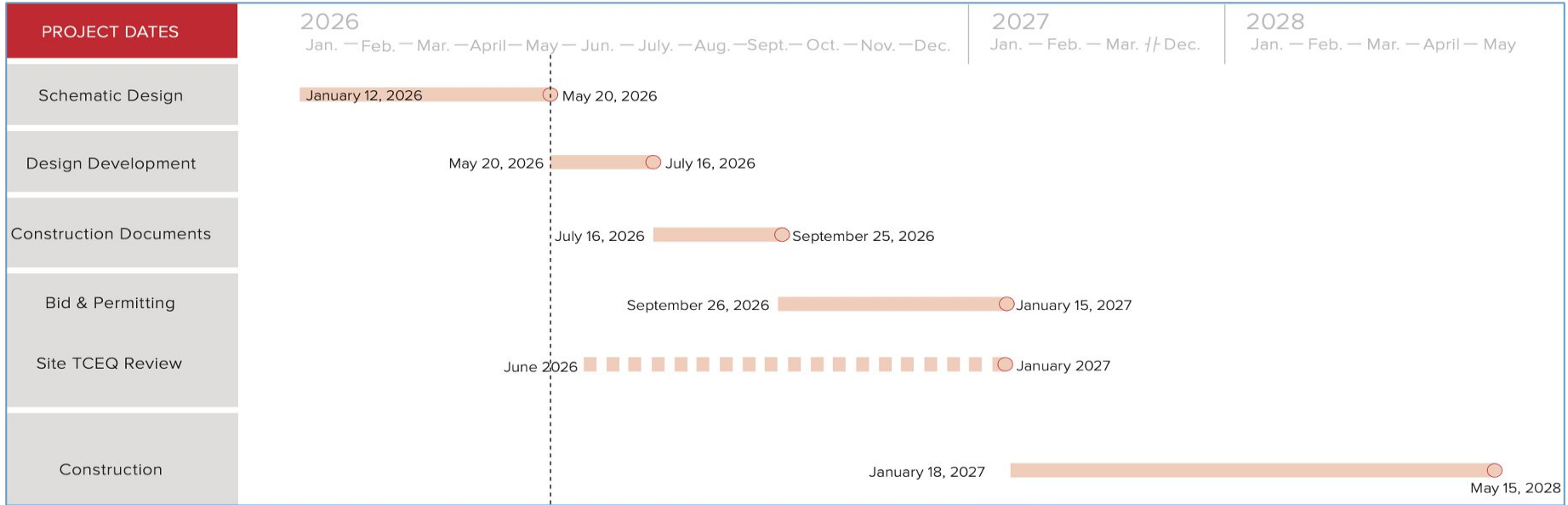
CONTINENTAL CAST STONE
COLOR 1104



MORTAR COLOR SPECTRUM
TEXAS TAN - N



Schedule, Building Size, and Budget



CAMPUS TOTAL GROSS AREA (sf) 118,779

Cost Footnotes:

- (1) Excludes playground cost (assuming JISD direct)
- (2) Includes playground cost (if American installs)

COST ESTIMATES

• BOND CONSTRUCTION BUDGET (1) \$46,900,000

ATLAS RANCH ELEMENTARY SCHOOL
 OPINION OF PROBABLE COST
 (BEGINNING CONSTRUCTION JAN 2027)

• CONSTRUCTION COST (2) \$47,300,000
 • ALLOWANCES/DESIGN CONTINGENCIES \$2,500,000
 • TOTAL \$49,800,000

Board Action Recommendation

Recommend approval of:

- 1. Schematic Design** for Atlas Ranch Elementary School as presented by Huckabee
- 2. Quantitative Method at Flexibility Level 3** for TEA instructional delivery
- 3. Long-Range Plan** as included in the site plan
- 4. Building Codes** as listed in the Schematic Design Booklet by Huckabee

