



LPGE Health Services Monthly Board Report

April 2026

Long Prairie-Grey Eagle Elementary & Secondary Schools

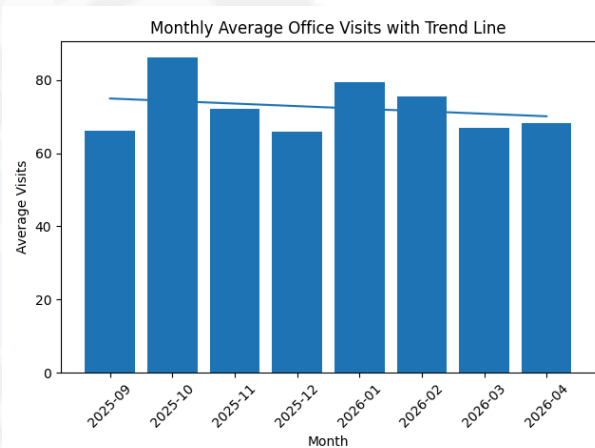
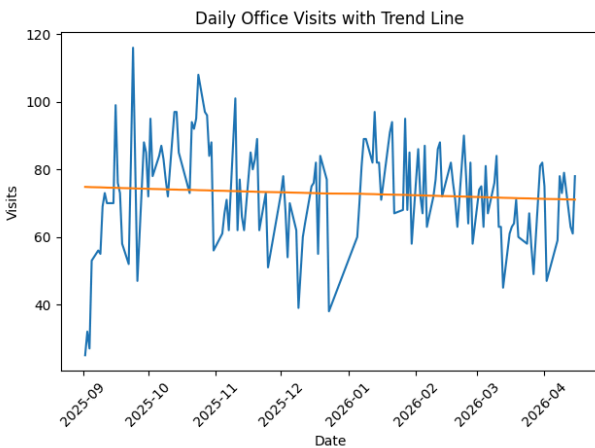
Melissa Meagher BAN, RN, PHN, LSN

Overview

This report provides a summary of student health services, trends, and activities for the reporting period. Health services continue to play a critical role in student safety, attendance, academic readiness, and regulatory compliance across both buildings.

Health Office Activity

Approximate number of student visits September 2nd, 2025 - April 16th, 2026: 10,299. This averages approximately 72 student visits per school day.



Top common reasons for visits:

Illness/symptoms-

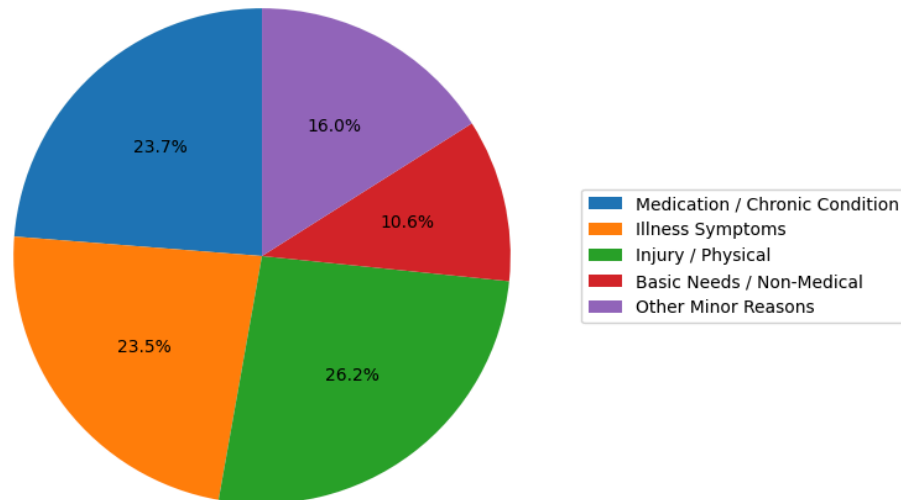
- Congestion- 199
- Cramps- 238
- Headache- 822
- Stomach ache- 818

Head Injury- 834

Chronic condition support-

- Asthma- 285
- Diabetes- 844

Student Office Visit Category Breakdown



The most common reasons for student visits continue to be medication administration, blood glucose monitoring, headaches, stomach aches, and bathroom use, followed closely by injury-related visits such as head checks and extremity injuries.

Notable trends or changes observed:

Over the past month, we have observed a consistent pattern of both upper respiratory and gastrointestinal illnesses. While case numbers have not reached the threshold requiring state reporting, trends continue to be noted at both school locations, with a higher concentration of cases at the Elementary level.

Confirmed cases during this period have included Influenza and COVID-19.

Illness & Communicable Disease Monitoring

Common illnesses observed this month:

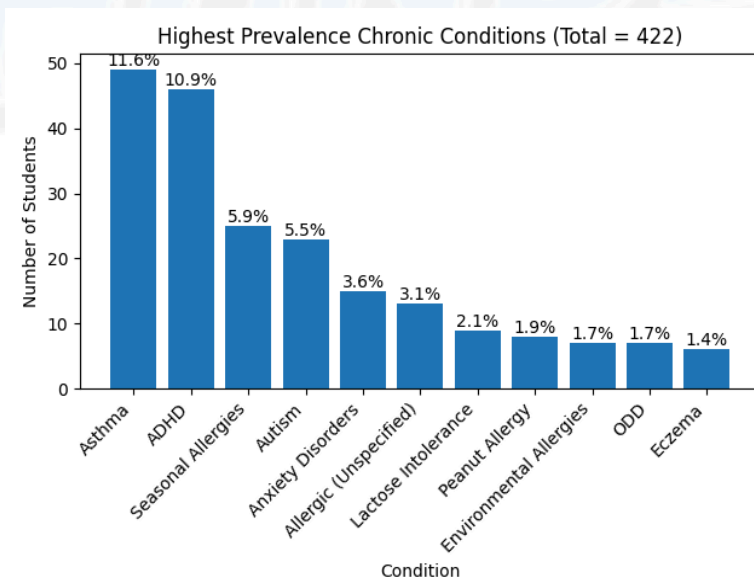
Influenza B, Strep throat, conjunctivitis (pink eye), and Fifth disease.

Confirmed or monitored communicable diseases (per MDH guidance): None

Chronic Health Conditions & Care Management

LPGE currently supports **422 documented chronic health conditions**. The majority fall within respiratory, allergy, and neurodevelopmental categories. This level of medical complexity continues to significantly impact daily health office workload, care planning, medication administration, emergency preparedness, and staff training needs.

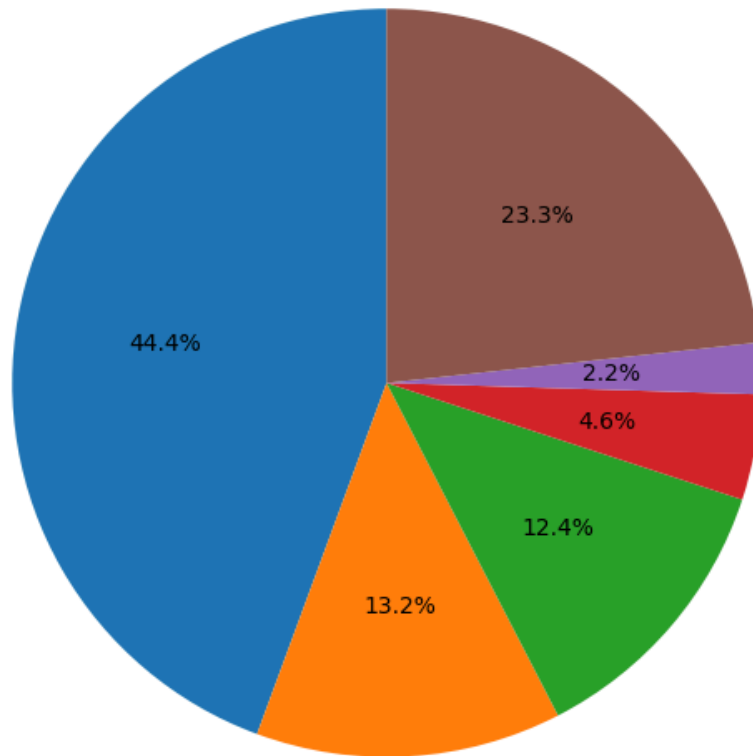
- 🫁 Respiratory / Airway (Asthma, Reactive Airway, Restrictive Lung, etc.)
-60 students (14%)
- 🧠 Neurodevelopmental / Behavioral (ADHD, Autism, ODD, Anxiety, PTSD, Mood Disorders, Developmental Disability, etc.)
-110 students (26%)
- 🌿 Allergies (Food, Environmental, Bee, Nut, Latex, etc.)
-102 students (24%)
- ❤️ Cardiac / Circulatory
-9 students (2%)
- 🩺 Endocrine / Metabolic (Diabetes, Hypothyroid, Pre-Diabetes, etc.)
-9 students (2%)
- 👂 Vision / Hearing Related
-13 students (3%)
- 🌱 Gastrointestinal / Autoimmune (Celiac, Crohn's, GERD, etc.)
-10 students (2%)
- ⚠️ Other Rare / Single Incidence Conditions
-109 students (26%)



☐ Medications administered per provider orders:

- All Medication types- 2,303

Medication Administration by Category (Total = 2,303)



Category	Count	%
ADHD / Stimulants & Related	1022	44.4%
Respiratory (Asthma/Inhalers)	304	13.2%
Psychotropic / Mental Health	285	12.4%
Pain / Fever / OTC	105	4.6%
GI / Nausea	51	2.2%
Other / Specialty Medications	536	23.3%

Staff training provided:

The following staff members were recertified in American Red Cross CPR, AED, and First Aid on March 23rd, 2026: Brooke Crouse, Jessica Richter, Tara Wojtowicz, Brenda Wood, Taralee May, and Brooklynn Wolf.

This ongoing training ensures that the emergency response- RED team and LP Kids staff remain prepared to respond effectively to medical emergencies and supports our district's commitment to student and staff safety.

Mental Health & Social-Emotional Observations

General trends observed (non-identifying):

Weekly, we encounter students who present with physical symptoms that are ultimately related to underlying mental health concerns. Many students may not recognize or may be reluctant to acknowledge that anxiety or emotional stress is contributing to their physical discomfort.

Through careful assessment, targeted questioning, and elimination, we identify potential mental health factors and collaborate with school social workers and counselors when appropriate. While some students may initially decline formal support services, health office staff strive to meet students where they are by providing a supportive, nonjudgmental environment and a listening ear.

Collaboration with counseling/support staff as needed:

From September 2nd, 2025, to April 16th, 2026, 77 students were referred for counseling/social work services after presenting to the health office with physical symptoms that were determined to be mental health-related.

Safety & Injury Prevention

Common injury types or safety concerns:

Head injuries remain our primary injury concern. To date, we have documented 834 head injury office visits during this school year. This represents approximately 8% of all office visits this school year.

Each head injury is treated with the utmost caution and care. Students are evaluated using established school-based concussion screening protocols. In most cases, this involves

approximately four separate office assessments throughout the school day to ensure the student remains free of concussion-related symptoms before dismissal.

If a student exhibits ongoing or worsening symptoms, families are promptly contacted and advised to seek medical evaluation for further assessment.

The majority of these injuries occur during playground activities or physical education classes.

Follow-up actions or prevention efforts:

Many of the head injuries observed this month have been associated with student decision-making, such as physical altercations, rocking back in chairs, or failing to maintain awareness of their surroundings. Prevention efforts continue to focus on reinforcing safety expectations, promoting appropriate use of equipment, and encouraging positive decision-making behaviors among students.

Screenings & Preventive Care

Vision Screenings (594 Total)

- Passed: 451
- Rechecked: 90
- Referrals: 48
- Unable to participate: 5

Hearing Screenings (598 Total)

- Passed: 494
- Rechecked: 106
- Referrals: 8
- Unable to participate: 6

Vision and hearing screenings are conducted throughout the school year. Screenings are performed upon request when concerns arise, as well as for students referred through the BLAST team or those undergoing evaluation for IEP consideration.

Any student who does not meet established screening criteria receives a rescreening to confirm results. If the student does not pass the rescreening, a formal referral letter is sent to the family recommending further evaluation by an appropriate healthcare provider.

Immunization compliance monitored:

At this time, all students comply with Minnesota school immunization requirements. Compliance is defined as having received the required immunizations, or having a properly completed medical exemption signed by a licensed healthcare provider, or a notarized conscientious exemption on file.

Kindergarten Registration

On Thursday, March 26, 2026, we welcomed 42 incoming kindergarten students to Long Prairie–Grey Eagle Elementary. Before the event, Health Office staff reviewed each student's immunization status through the Minnesota Immunization Information Connection (MIIC). Notification letters were provided to families whose children require additional vaccinations before the start of the school year in the fall.

This process provides the Licensed School Nurse with an opportunity to connect with families, communicate state immunization requirements, and answer any questions to ensure students comply with these requirements before school entry.

Cardiac Emergency Response Planning Update

Work continues to develop and refine a comprehensive Cardiac Emergency Response Plan (CERP) for the district. This ongoing initiative is focused on strengthening preparedness and ensuring an effective, coordinated response to cardiac emergencies across all school buildings.

As previously reported, we received the fully executed Official Grant Award Notification (OGAN) from the Minnesota Department of Education (MDE), allowing us to begin implementation. We have now started ordering items supported through the CERP grant, including CPR and First Aid training supplies and related equipment. Additional purchases will continue in the coming months, with the goal of full implementation before the start of the next school year.

In addition to utilizing the MDE model plan, Resource Training & Solutions has developed a detailed CERP framework for our district. This plan was reviewed and shared with Terasa from Project ADAM, who provided valuable feedback. While the framework is comprehensive, it requires further customization to reflect LPGE-specific procedures and building-level practices. Key areas for refinement include:

- Clearly defined activation procedures (e.g., Code Medical protocols, staff response expectations)
- Communication methods for emergencies (radio, overhead announcements, etc.)
- Building-specific protocols and response flow

- Inclusion of maps identifying AED locations in each building
- Additional visual supports, such as the American Heart Association “Act Now, Save a Life” resource

This feedback confirms that while a strong foundation is in place, the next phase of work will focus on tailoring the plan to ensure it is practical, clear, and specific to our district’s needs.

In partnership with Project ADAM, we will continue this customization process. A spring training meeting is scheduled for May 14th, 2026, in which three LPGE staff members will receive hands-only CPR instructor training to support future in-district training efforts. Additionally, Project ADAM will provide hands-only CPR training to all district staff during the fall workshop, followed by Red Team mock emergency drills at each building.

RedCaps were completed with detailed information on our Emergency Response Teams (“Red Teams”). The final phase will involve completing the district-specific CERP and presenting it to the School Board in May for review, with the goal of final approval before the start of the 2026–2027 school year.

This initiative reflects the district’s continued commitment to student and staff safety, emergency preparedness, and alignment with state and national best practices.

Wellness Committee Update

The LPGE Wellness Committee continues to meet quarterly. Meeting notes are distributed to all staff via email and posted on the LPGE website to ensure transparency and accessibility.

The district’s annual March Madness Hoops Competition was successfully held at both school buildings and continues to be a valued wellness tradition that promotes staff engagement, friendly competition, and school-wide morale.

At the Secondary School, the Final Four included Mr. Young, Mr. Schulte, Joseph Gohman, and Carlos Cosme. Following a competitive final round, Joseph Gohman was crowned the 2026 Champion, followed by Mr. Young in second place, Mr. Schulte in third, and Carlos Cosme in fourth.

At the Elementary School, the Final Four also competed in front of an enthusiastic crowd. Final placements were Mr. Eisenschenk as Champion, Mrs. Dreher in second place, Ms. Mathews in third, and Mrs. Psyck in fourth place.

The competition is organized by the Wellness Committee, with Health Office staff and the Physical Education Department facilitating the event by coordinating brackets, supervising activities, and supporting participants throughout. In addition, Mr. Zimmerman organized a parallel NCAA bracket competition for staff, further enhancing engagement and participation across the district.

The Wellness Committee remains committed to fostering a culture of health and well-being among staff and supporting district-wide wellness initiatives. The next Wellness Committee meeting is scheduled for May 21, 2026.

Health Services Updates

We are currently observing a slight decrease in the average number of daily student visits to the Health Office. This shift may be attributed to several factors, including the conclusion of the winter illness season and natural fluctuations in student health needs throughout the school year.

Health Office staff are actively participating in training for the upcoming transition to the new Skyward Cumulative system, which will replace our current Skyward program next school year. This transition will require significant learning and implementation in the coming months. While this process will present challenges, we are optimistic that the updated system will provide long-term benefits for student health documentation and efficiency.

In preparation for the upcoming school year, the Licensed School Nurse will be sending immunization notification letters to families regarding required vaccinations. Additionally, staff will conduct an end-of-year inventory of health supplies and medications, followed by communication with families regarding medication pick-up.

We also look forward to supporting the upcoming Color Run event, where Health Office staff will provide medical coverage as part of our ongoing commitment to student safety during school activities.

The Licensed School Nurse appreciates the district's support in attending recent professional development through Sourcewell and values the opportunity to collaborate with other LSNs through the Sourcewell Community of Practice group.

As always, I would like to thank the Board for its continued support of health services within our district. I remain interested in engaging the Board in ongoing discussion regarding needed updates to our health services spaces.

Thank you for your continued partnership and support of student health and safety. I welcome any questions or requests for additional data.