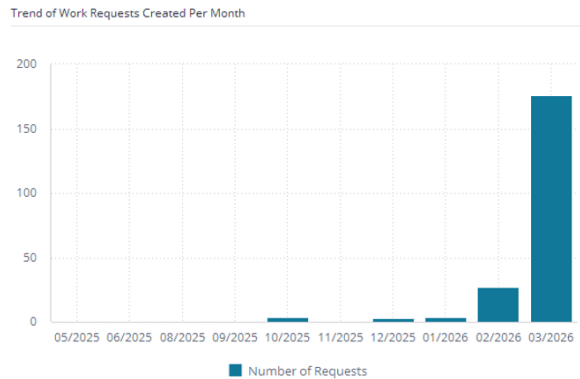
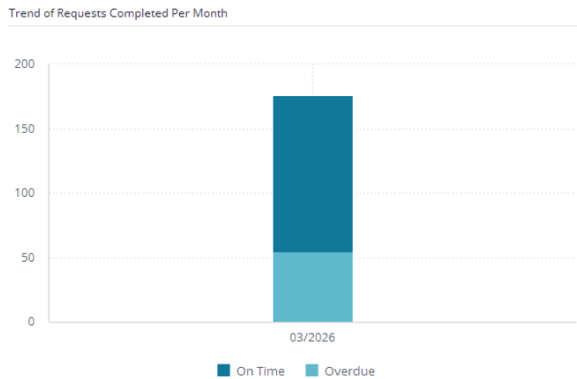
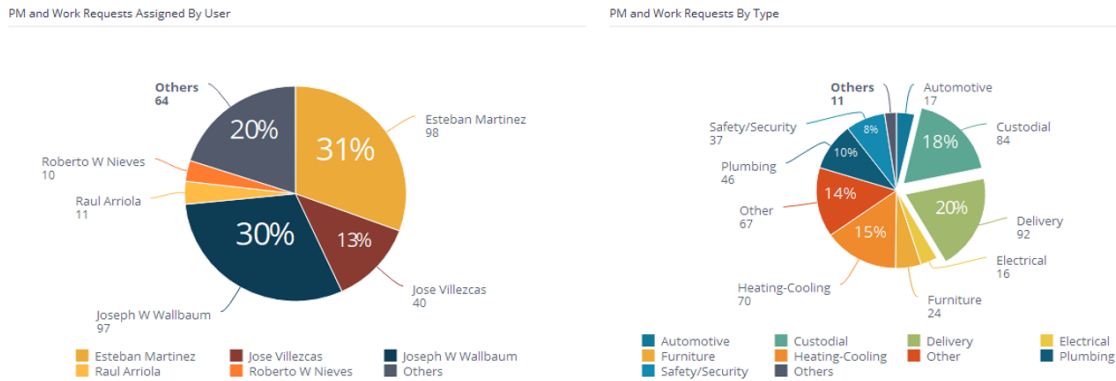
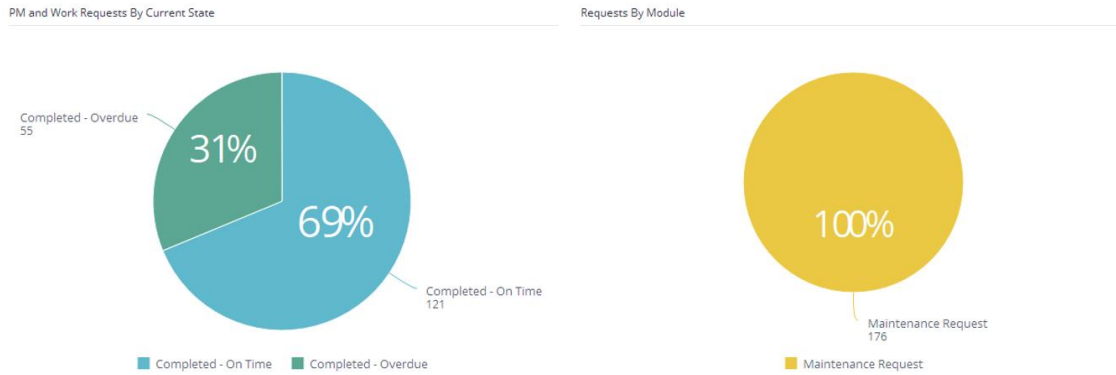
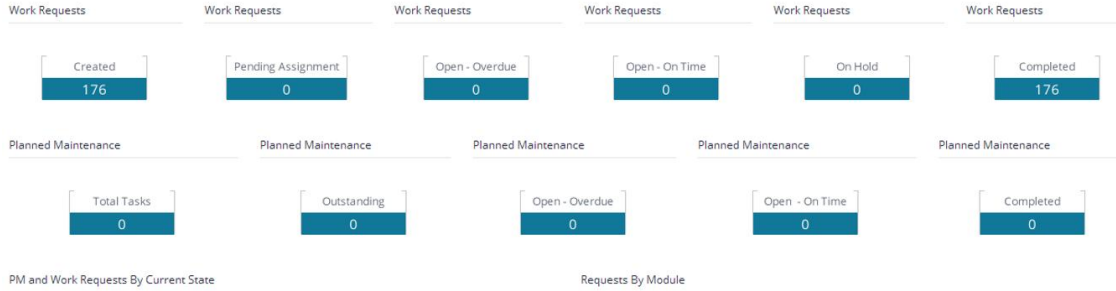


## March Delivery/Custodial Work Orders

176 delivery/custodial work orders created in March

69% completed on time

31% completed after 7 days due to ordering supplies and non-student attendance-based timelines

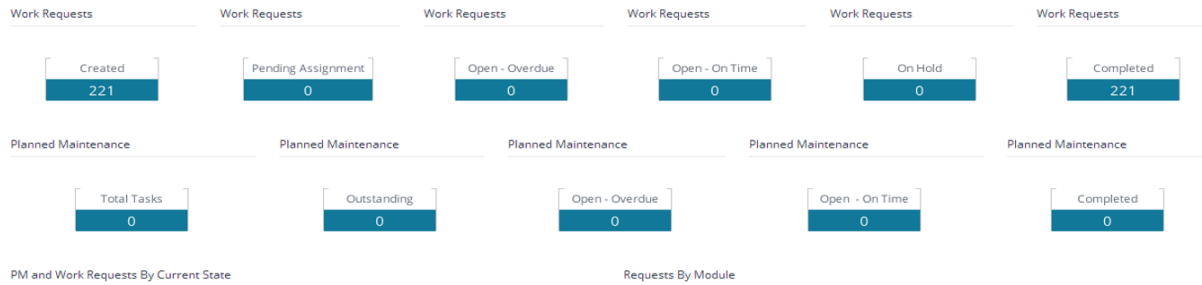


## March Maintenance Work Orders

221 maintenance work orders created in March

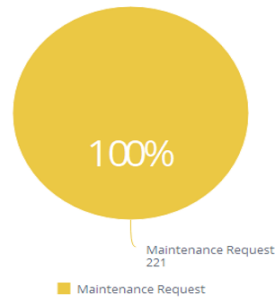
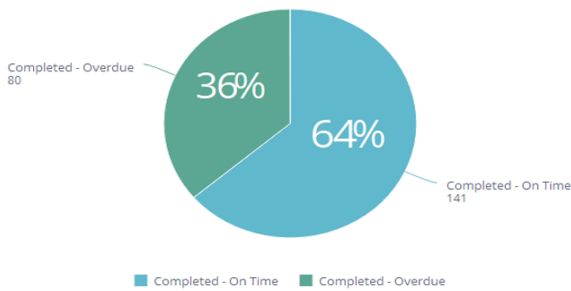
64% completed on time

36% completed after 7 days due to ordering parts and non-student attendance-based timelines



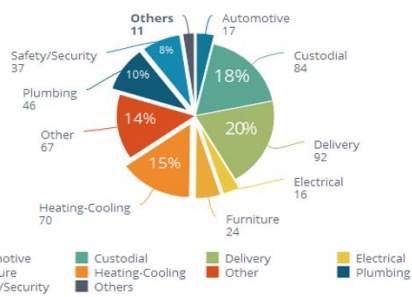
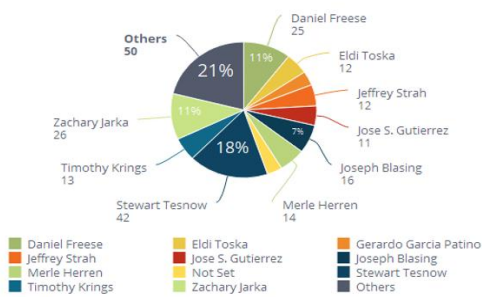
PM and Work Requests By Current State

Requests By Module



PM and Work Requests Assigned By User

PM and Work Requests By Type



Trend of Requests Completed Per Month

Trend of Work Requests Created Per Month

