

ROSEVILLE AREA SCHOOLS

Achievement & Integration Plan 2026–2029

February 24, 2026

GOALS & KEY STRATEGIES

#1

Our graduates are prepared to achieve their goals and aspirations.

- Ensure students are college- and career-ready
- Deliver a challenging, joyful, and safe learning environment
- Deliver innovative, effective practices and systems

#2

Our learners contribute to an equitable, caring society.

- Cultivate student engagement and joy in learning
- Support learner resiliency (student social and emotional learning and mental health)
- Amplify student leadership and voice in decision-making
- Prepare learners to be racially and socially responsive

#3

We are a culturally responsive, inclusive, anti-racist district.

- Ensure educator commitment to anti-racist practices
- Hire and retain a diverse workforce
- Develop equitable leaders
- Develop a culturally responsive evaluation system
- Build a culture of belonging where all feel welcome, included, and safe

#4

The community is united behind meeting student needs.

- Partner with families and the community to support student success
- Build a culture of belonging

#5

We are financially secure.

- Cultivate and maintain community trust
- Secure and allocate financial resources to support the district's mission and vision

Achievement & Integration Plan

The Achievement and Integration (A&I) for Minnesota program supports the pursuit of racial and economic integration, increased student achievement, the creation of equitable educational opportunities, and the reduction of academic disparities based on students' diverse racial, ethnic, and economic backgrounds in Minnesota public schools.



A & I Budget

DLSI



A few

**Cultural
Liaisons**



Some

AVID



All



Achievement & Integration Plan

Required Goal #1

Reducing the disparities in academic achievement among all students and specific categories of students excluding the categories of gender, disability, and English learners

- AVID
- Cultural Liaisons
- DLSI

Reduction in gap between BIPOC and white student's reading proficiency as measured by MCAs.

Achievement & Integration Plan

Required Goal #2

Reducing the disparities in equitable access to effective and more diverse teachers among all students and specific categories of students excluding the categories of gender, disability, and English learners

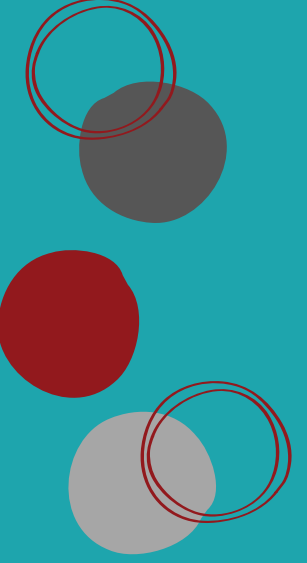
- Cultural Liaisons
 - Student academic achievement, attendance, graduation rates
- DLSI
 - Staff diversity

Achievement & Integration Plan

Required Goal #3

Increasing racial and economic integration

- Recruitment and **Retention** of BIPOC educators



Racially Identifiable Schools

Racially Identifiable Schools (RIS) are schools whose BIPOC student population is at least 20 percentage points higher than the district as a whole.

- **District: 63.3%**
- **Edgerton: 86.0%**

Achievement & Integration Plan

RIS Goals

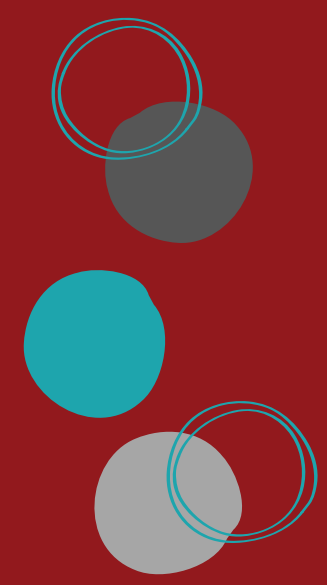
Edgerton Elementary

- Cultural Liaisons
 - Partner with families to increase student success
- AVID
 - All 5th and 6th graders
 - Increase amount of BIPOC students that enroll in 7th grade AVID elective



Next Steps

- **March 2: ELAC meeting**
 - Equity Leadership Advisory Committee
 - Refine goals, action steps and strategies
 - Street Data
- **March 6: Interdistrict A & I Collaboration meeting**
 - Forest Lake, Stillwater, White Bear Lake
- **March 13: 2026-29 A & I plan due to MDE**



Questions?